

Adaptations of the Illinois Mathematics and Science Academy in Response to COVID-19

JSSF Teacher Exchange 2020

Dr Sowmya Anjur and Dr Dave DeVol

Illinois Math and Science Academy, USA

Overview of Adaptations for Covid-19

- All teaching/learning is distance learning (remote)
- The calendar and class schedule were changed
- The day starts later and ends earlier to limit Zoom time: one-half the normal classes meet each day
- Net result – classes meet for half the time each week compared to normal, on-campus schedule
 - Many teachers are adapting by covering less material
 - Some teachers are not – leading to heavy work load

Overview of Adaptations for Covid-19

- A few details:
 - Students and faculty have all been provided with tablets by IMSA
 - Students were provided with hotspots if needed
 - Classes were asynchronous or synchronous last spring
 - Grades were pass-fail last spring
 - Classes are synchronous with required attendance this fall
 - Grades are letter grades again this fall

Online Adaptations in Biology

- Originally 100 min classes, now 50 min classes
- Need to adapt curriculum for shortened time
- Need to rethink laboratory experiences
- Online quizzes have been challenging
- Internet issues have surfaced
- Engaging students online is much more difficult since they are postage stamp sized faces on a computer

Pathophysiology adaptations

- Using real life examples to teach the same content
- More interactive experiences
- More discussion in small groups
- Replacing lengthy online exams with smaller and more frequent assessments
- Using fun pictures to help motivate students

An introduction to organ systems

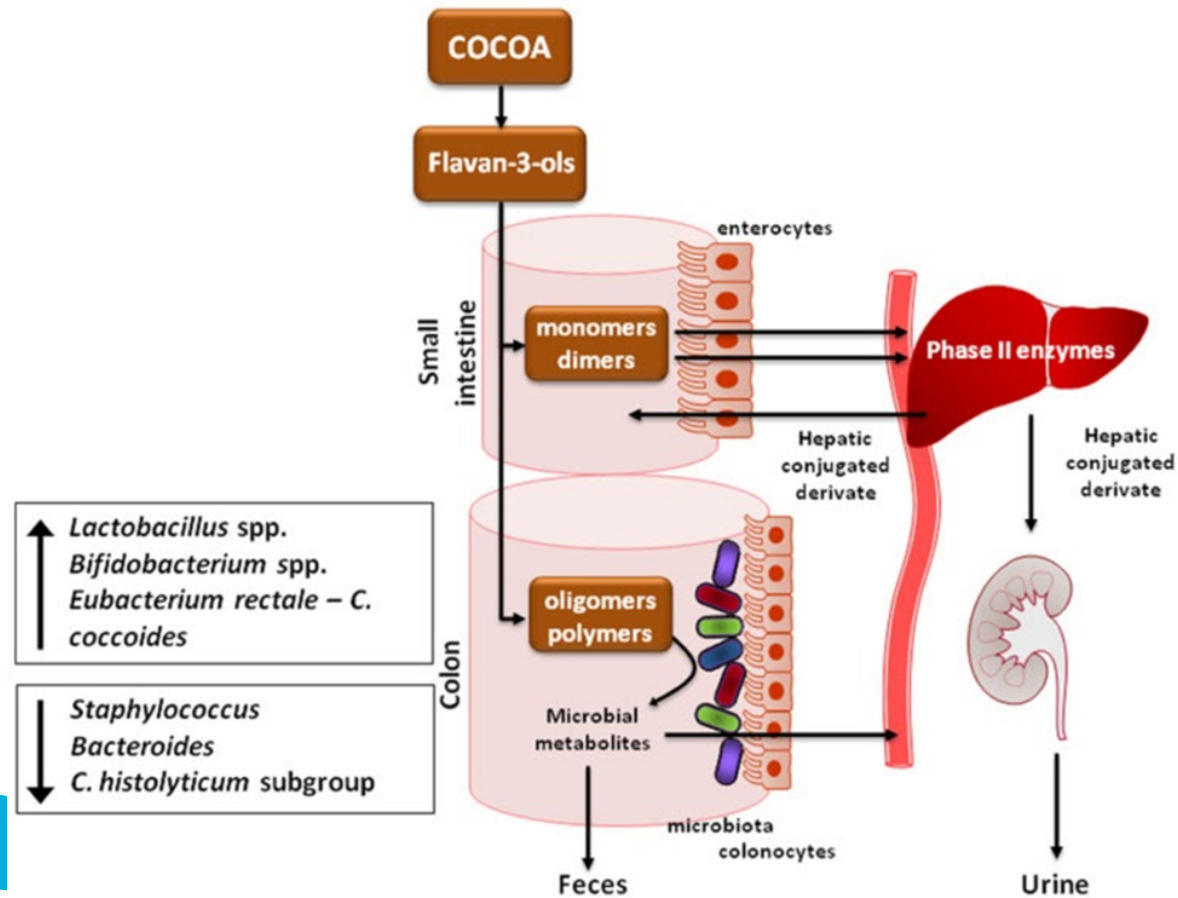
Effect of coffee on the body



Discussion - How chocolate can increase your health!



Using chocolate to learn about the digestive system



Teacher Interaction

- What are some adaptations you have made for online teaching and learning?
- How difficult has it been to engage students?
- Has student attendance been consistent?
- How much support have you received from your school districts?
- Have you encountered cheating on online quizzes?
- Do you have any suggestions to enhance online teaching?

Contact us!

sanjur@imsa.edu – Sowmya Anjur

ddevol@imsa.edu – Dave DeVol

Questions?



Thank you for listening!

