

PRELIMINARY RESEARCH

Open Access

^{68}Ga -DOTATATE PET/CT for the detection of inflammation of large arteries: correlation with ^{18}F -FDG, calcium burden and risk factors

Xiang Li^{1,2}, Samuel Samnick^{1,3*}, Constantin Lapa¹, Ina Israel¹, Andreas K Buck^{1,3}, Michael C Kreissl^{1,3} and Wolfgang Bauer^{2,3}

Abstract

Background: Ga-[1,4,7,10-tetraazacyclododecane-*N,N,N',N''*-tetraacetic acid]-d-Phe¹,Tyr³-octreotate (DOTATATE) positron emission tomography (PET) is commonly used for the visualization of somatostatin receptor (SSTR)-positive neuroendocrine tumors. SSTR is also known to be expressed on macrophages, which play a major role in inflammatory processes in the walls of coronary arteries and large vessels. Therefore, imaging SSTR expression has the potential to visualize vulnerable plaques. We assessed ^{68}Ga -DOTATATE accumulation in large vessels in comparison to ^{18}F -2-fluorodeoxyglucose (FDG) uptake, calcified plaques (CPs), and cardiovascular risk factors.

Methods: Sixteen consecutive patients with neuroendocrine tumors or thyroid cancer underwent both ^{68}Ga -DOTATATE and ^{18}F -FDG PET/CT for staging or restaging purposes. Detailed clinical data, including common cardiovascular risk factors, were recorded. For a separate assessment, they were divided into a high-risk and a low-risk group. In each patient, we calculated the maximum target-to-background ratio (TBR) of eight arterial segments. The correlation of the TBR_{mean} of both tracers with risk factors including plaque burden was assessed.

Results: The mean TBR of ^{68}Ga -DOTATATE in all large arteries correlated significantly with the presence of CPs ($r = 0.52$; $p < 0.05$), hypertension ($r = 0.60$; $p < 0.05$), age ($r = 0.56$; $p < 0.05$), and uptake of ^{18}F -FDG ($r = 0.64$; $p < 0.01$). There was one significant correlation between ^{18}F -FDG uptake and hypertension (0.58 ; $p < 0.05$). Out of the 37 sites with the highest focal ^{68}Ga -DOTATATE uptake, 16 (43.2%) also had focal ^{18}F -FDG uptake. Of 39 sites with the highest ^{18}F -FDG uptake, only 11 (28.2%) had a colocalized ^{68}Ga -DOTATATE accumulation.

Conclusions: In this series of cancer patients, we found a stronger association of increased ^{68}Ga -DOTATATE uptake with known risk factors of cardiovascular disease as compared to ^{18}F -FDG, suggesting a potential role for plaque imaging in large arteries. Strikingly, we found that focal uptake of ^{68}Ga -DOTATATE and ^{18}F -FDG does not colocalize in a significant number of lesions.

Keywords: Atherosclerotic plaque, ^{68}Ga -DOTATATE, Somatostatin receptor, Cardiovascular risk factors, Macrophage

Background

Cardiovascular disease (CVD) has become a global epidemic, being responsible for almost one third of all recorded deaths in men and women worldwide [1,2]. Atherosclerosis is the leading cause of cardiovascular disease morbidity, with the rupture of an atherosclerotic

plaque as the critical event resulting in either occlusion of the vessel by a thrombus or thromboembolic event [3].

Cardiovascular inflammatory processes with the accumulation of activated macrophages on the vascular wall play a crucial role in the initiation, progression, destabilization, and eventually, rupture of vulnerable plaques [4]. Therefore, inflammation constitutes an important target for imaging and treating atherosclerosis [5].

There are several invasive methods that can be used to detect atherosclerotic plaques, such as intravascular

* Correspondence: Samnick_S@klinik.uni-wuerzburg.de

¹Department of Nuclear Medicine, University of Wuerzburg, Oberdürrbacher Str. 6, Wuerzburg D-97080, Germany

³Comprehensive Heart Failure Centre, University Hospital Wuerzburg, Wuerzburg D-97080, Germany

Full list of author information is available at the end of the article

ultrasonography [6], optical coherence tomography [7], or angiography [8], which is still considered the gold standard. However, due to their invasive nature, they are not recommended for routine clinical application. Numerous noninvasive imaging techniques have been applied to visualize vulnerable plaques, such as MRI and high-frequency ultrasound [9,10]. Recently, other new innovative sensitive imaging methods have been developed [11,12].

Due to its ability to process both structural and functional information, positron emission tomography (PET)/computed tomography (CT) holds great potential in the evaluation of vulnerable plaques. As inflammation detection has become the major concept in atherosclerosis PET/CT imaging, a more sensitive tracer is still to be found. [1,4,7,10-tetraazacyclododecane-*N,N',N'',N'''*-tetraacetic acid]-d-Phe¹,Tyr³-octreotate (DOTATATE) labeled with a generator-derived positron-emitting isotope Gallium-68 (⁶⁸Ga) selectively binds to somatostatin receptor 2 (SSTR-2). ⁶⁸Ga-DOTATATE is routinely used for the staging and restaging of neuroendocrine tumors. Importantly, SSTR-2 was also found specifically expressed and upregulated in human macrophages [13-15], suggesting detection by ⁶⁸Ga-DOTATATE PET imaging. Recently, ⁶⁸Ga-DOTATATE as a more specific alternative to the assessment of macrophages with PET/CT has been published [16]. This tracer may potentially be used as a tool to quantify the extent of atherosclerotic inflammatory activities in big arteries.

Also, [¹⁸F]-2-fluorodeoxyglucose (FDG), as the most commonly used radiotracer, has already been assessed by several groups [17-19]. Results showed a good correlation between carotid plaque ¹⁸F-FDG uptake *in vivo* and macrophage staining from the corresponding histological sections [20,21]. Furthermore, there was a weak but highly significant correlation between ¹⁸F-FDG uptake and cardiovascular risk factors like hypertension, smoking, hyperlipidemia, being overweight, type II diabetes, and a family history of coronary artery disease (CAD) [22].

The purpose of this retrospective study was to examine the relationship of focal vascular ⁶⁸Ga-DOTATATE uptake to commonly known risk factors for cardiovascular disease and calcification. We also performed a correlation to vascular ¹⁸F-FDG uptake, which has been demonstrated to be a marker for atherosclerotic inflammation in large arteries [23-26].

Methods

Patients

A total of 16 patients (12 males and 4 females, age ranges from 48 to 77 years, mean age was 63.5 years) were retrospectively reviewed by two experienced nuclear medicine physicians (MCK and CL). These patients

had undergone both ⁶⁸Ga-DOTATATE PET/CT and ¹⁸F-FDG PET/CT for staging or restaging within 6 weeks (mean, 3.8 weeks; range, 0.14 to 5.9). None of these patients received steroids or had a recent history of inflammation or vasculitis. The study protocol complied with the Declaration of Helsinki; all patients gave their informed consent for the studies.

Imaging procedures

All patients underwent ¹⁸F-FDG PET/CT and ⁶⁸Ga-DOTATATE PET/CT on a dedicated PET/CT scanner (Siemens Biograph[®] mCT 64, Siemens, Knoxville, USA) consisting of a LSO full-ring PET and a 64-slice spiral CT. On the day of the ¹⁸F-FDG PET imaging, patients fasted for at least 6 h to assure a serum glucose level below 130 mg/dL. At the time point of intravenous injection of 4.18 ± 0.88 MBq/kg bodyweight, patients received 10 mg of furosemide *i.v.* After an uptake period of 80 to 90 min, transmission data were acquired using a low-dose CT (30 mAs, 120 kV, a 512 × 512 matrix, a 5-mm slice thickness, an increment of 30 mm/s, a rotation time of 0.5 s, and a pitch index of 0.8) extending from the base of the skull, or the vertex, to the proximal thighs. Consecutively, PET emission data were acquired in three-dimensional mode with a 200 × 200 matrix with 2-min emission time per bed position. After decay and scatter correction, PET data were reconstructed iteratively with attenuation correction using a dedicated software (HD. PET, Siemens Esoft).

For the assessment of somatostatin receptor expression, a mean dose of 1.29 ± 0.43 MBq ⁶⁸Ga-DOTATATE/kg bodyweight was injected intravenously. After a period of 40 to 60 min, CT and PET data acquisition was started using the same parameters as mentioned above.

Image analysis

All PET/CT scans were reviewed for anatomic localization and amount of focal tracer uptake. In each patient, eight segments of large arteries were analyzed: left carotid artery, right carotid artery, ascending thoracic aorta, aortic arch, descending thoracic aorta, abdominal aorta, and left and right iliac arteries.

Arterial calcifications were also assessed; vascular attenuation of >130 Hounsfield units was rated as calcification [27,28]. The plaque burden was semiquantitatively determined by assessing the maximal dimensions and composition of plaque using a scoring system from 0 to 4, as previously described by Rominger et al. [16] (Table 1).

For PET data analysis, a region of interest (ROI)-based approach was chosen. Maximal 'standardized uptake values' (SUV_{max}) for both ¹⁸F-FDG and ⁶⁸Ga-DOTATATE uptake were calculated for all the segments mentioned above [29]. Areas in proximity to tumor lesions or organs

Table 1 Calcified plaque scoring system

Score	Calcified occupation of the vessel circumference (%)
0	0
1	<10
2	10 to 25
3	25 to 50
4	>50

The total calcified plaque burden for each of the eight arterial segments was defined as the sum of the individual calcified plaque scores.

with a high physiological tracer uptake, i.e., the liver, were carefully avoided. At least three fixed-size ROIs were placed to cover the lumen at each site, and the highest value was extracted for the final calculation of target-to-background ratios (TBRs). Background was defined as the average blood-pool uptake as determined by the mean SUV of six different ROIs (diameter of 1 cm) within the lumen of the vena cava. The SUV_{max} was divided by the mean blood-pool SUV in order to obtain the TBR [22]. We used the TBRs of all eight arterial segments for the final analysis. To determine whether sites of increased focal uptake of ^{18}F -FDG and ^{68}Ga -DOTATATE colocalize, the sites with the highest uptake (within about 30% of the highest uptake value) were assessed. Accordingly, arbitrary cutoff TBR values of 3.5 for ^{68}Ga -DOTATATE and 2.1 for ^{18}F -FDG were chosen, resulting in 37 foci of increased ^{68}Ga -DOTATATE uptake and 39 foci of increased FDG uptake. Each of these foci was visually assessed for the presence of concordantly increased focal uptake of the other tracer and for the presence of calcifications in the vessel wall.

We also assessed the differential vascular uptake of the two tracers in a low-risk group for CAD, defined as subjects with no more than one cardiovascular risk factor ($n=8$), and a high-risk group with at least two cardiovascular risk factors ($n=8$). For ROI assignment, visualization of PET/CT images, and automated coregistration of the two PET/CT datasets, a dedicated software (TrueD, Siemens Healthcare) was used.

Statistical methods

Statistical Package for Social Sciences (SPSS version 11.0; SPSS Inc. (IBM), Armonk, NY, US) was used for statistical analyses. Continuous variables with a normal distribution were recorded as mean \pm standard deviation. The site-specific blood-pool activities of the two tracers were compared using ANOVA. Pearson correlation coefficients were used for the assessment association between the uptake of the two tracers and the presented cardiovascular risk factors: plaque burden, hypercholesterolemia, hypertension, smoking, diabetes, family history, history of cardiovascular disease, body mass index (BMI), age, and gender. Moreover, intraclass correlation coefficients (ICCs) with 95% confidence

intervals were calculated to test interobserver and intraobserver agreement for TBR. Two-way random ICC values that are greater than 0.8 are accepted as a measure of excellent reproducibility [30].

Results

Patient population

Relevant baseline characteristics of the patients are reported in Table 2. In brief, 8 out of 16 patients had a history of neuroendocrine tumors, three suffered from thyroid cancer, and the remaining five patients had different carcinomas. Systemic tumor therapy preceding imaging for less than 12 weeks was administered in four patients. Detailed information on tumor types and therapies can be found in Table 3, and cardiovascular risk factors can be found in Table S6 in Additional file 1.

PET/CT imaging

When assessing the PET/CT image data, we found colocalized uptake of both tracers (Figure 1) as well as foci of increased uptake of only one of the tracers (Figures 2 and 3). On evaluation of the 37 sites with the highest ^{68}Ga -DOTATATE TBR value, a colocalized focal increase of ^{18}F -FDG uptake was observed in 43.2% (16 sites, 10 sites with calcification, and 6 sites without calcification), while 56.8% of the sites (21 sites, 6 sites with calcification, and 15 sites without calcification) were negative. Of 39 sites with the highest ^{18}F -FDG uptake, only 28.2% had an increased uptake of ^{68}Ga -DOTATATE (11 sites, 4 sites with calcification, and 7 sites without calcification), while 71.8% of the sites (28 sites, 6 sites with calcification, and 22 sites without calcification) were recorded as negative (Figure 4). In total, 12 patients were examined to have focal increased uptakes of ^{68}Ga -DOTATATE, while 10 patients were found to have ^{18}F -FDG focal increased uptakes. As previously recommended, we also used the mean TBR, which was calculated as the mean value of TBRs from eight arterial segments, for statistical analyses.

Table 2 Patient characteristics

Characteristics	
Age (yrs)	63.5 \pm 8.8
Gender (M, F)	4, 12
Hypercholesterolemia (%)	31.25
Hypertension (%)	56.25
Smoking (%)	25
Diabetes mellitus (%)	12.5
Family history of CAD (%)	25
History of CVD (%)	18.75
CPB	9.44 \pm 8.07

CAD, coronary artery disease; CVD, cardiovascular disease; CPB, calcified plaque burden; F, female; M, male.

Table 3 Baseline characteristics of the study population

Patient number	Cancer type	Systemic tumor therapy within the last 3 months	Number of selected positive-uptake segments		TBR _{mean}	
			FDG	DOTATATE	FDG	DOTATATE
1	Renal cell cancer	None	8	6	2.9	5.6
2	Follicular thyroid cancer	TSH-suppressive therapy	7	2	2.6	3.3
3	Pheochromocytoma, metabolically active (normetanephrines, dopamines)	None	3	4	2.1	3.9
4	Cancer of the gastric-esophageal junction	Xeloda, single dose 2 days prior to FDG, 6 days prior to DOTATATE PET	0	0	1.5	1.8
5	NET (stomach)	None	0	0	1.7	2.2
6	NET of unknown primary (liver metastases)	None	6	3	2.2	3.4
7	Carcinoid (rectum)	One cycle of Lu-177-DOTATATE 8 weeks prior to FDG, 9 weeks to DOTATATE PET	0	1	1.7	2.9
8	NET of unknown primary (liver metastases)	None	5	2	2.1	2.9
9	NET (pancreas)	One cycle of cisplatin/etoposide 1 week after FDG; 4 weeks prior to DOTATATE PET)	2	1	1.8	2.4
10	Carcinoid (lung), hormonally active	None	1	2	1.7	2.6
11	NET of unknown primary (liver metastases)	Sandostatin LAR, last injection 4 weeks prior to DOTATATE PET, then stopped	0	0	1.5	2
12	NET (ileum)	None	2	1	1.7	2.8
13	NSCLC	None	1	8	1.8	5.7
14	Papillary and follicular thyroid cancer	TSH-suppressive therapy	2	4	1.9	3.5
15	Follicular thyroid cancer	TSH-suppressive therapy	2	3	1.9	3.1
16	Uterine cancer	None	0	0	1.4	1.3

NET, neuroendocrine tumor; NSCLC, non-small cell lung cancer; TSH, thyroid-stimulating hormone.

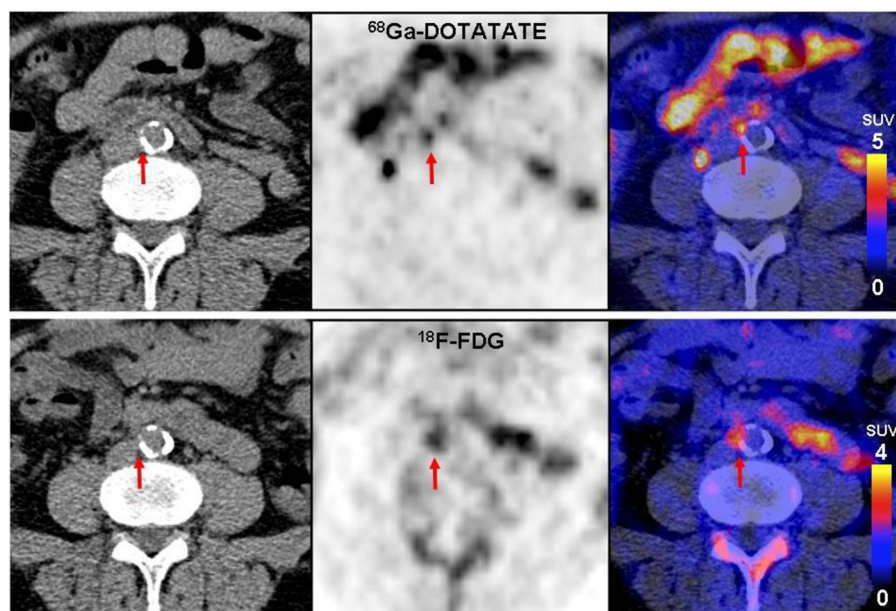


Figure 1 Colocalized focal vascular uptake of ¹⁸F-FDG and ⁶⁸Ga-DOTATATE. Transverse views of a 61-year-old male patient with hypertension and a history of cardiovascular disease. Positive uptake is present on both ⁶⁸Ga-DOTATATE (upper row) and ¹⁸F-FDG PET/CT (lower row) at the same location in the abdominal aorta of this patient (red circle). Also, serious calcification was detected at the same position. TBR_{DOTATATE} was 6.18, while TBR_{FDG} was 2.42.

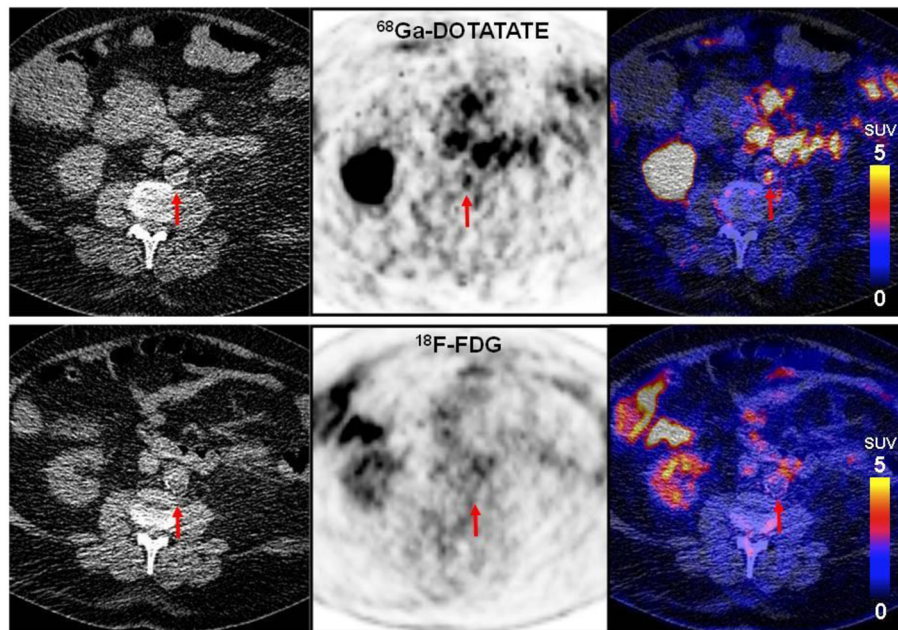


Figure 2 Focal vascular uptake of ^{68}Ga -DOTATATE without corresponding focal ^{18}F -FDG uptake. Transverse PET/CT images of a 73-year-old male patient with hypertension, hypercholesterolemia, and smoking. Intense focal uptake of ^{68}Ga -DOTATATE can be observed in the aortic arch (upper row), whereas no focally increased ^{18}F -FDG uptake was seen (lower row). $\text{TBR}_{\text{DOTATATE}}$ was 7.60, while TRB_{FDG} was 1.74.

Subgroup analysis

Two risk-related groups were formed to assess the differential vascular uptake of the two tracers. The summed

calcification scores (CP_{sum}) differed significantly between the two groups ($p < 0.05$). The TBR_{mean} , $\text{TBR}_{\text{abdominal}}$, $\text{TBR}_{\text{left_iliac}}$, and $\text{TBR}_{\text{right_iliac}}$ of ^{68}Ga -DOTATATE were

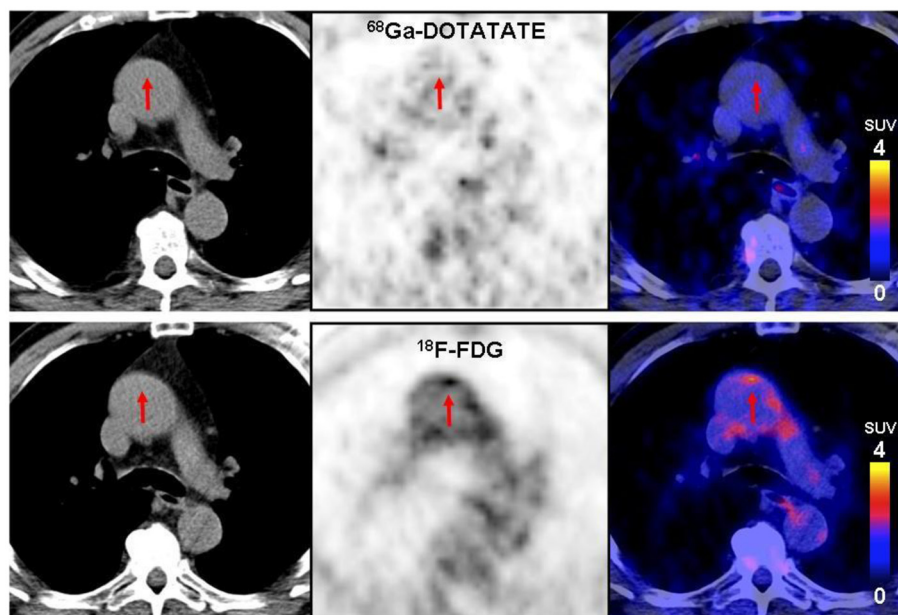


Figure 3 Focal uptake of FDG but not DOTATATE in the vessel wall. Transverse PET/CT images of a 77-year-old male patient. With hypertension, hypercholesterolemia, history of coronary disease and a family history of cardiovascular disease. Intense ^{18}F -FDG uptake can be observed in the aortic arch (upper row), whereas no focally increased ^{68}Ga -DOTATATE uptake can be seen (lower row). $\text{TBR}_{\text{DOTATATE}}$ was 1.64, while TRB_{FDG} was 2.50.

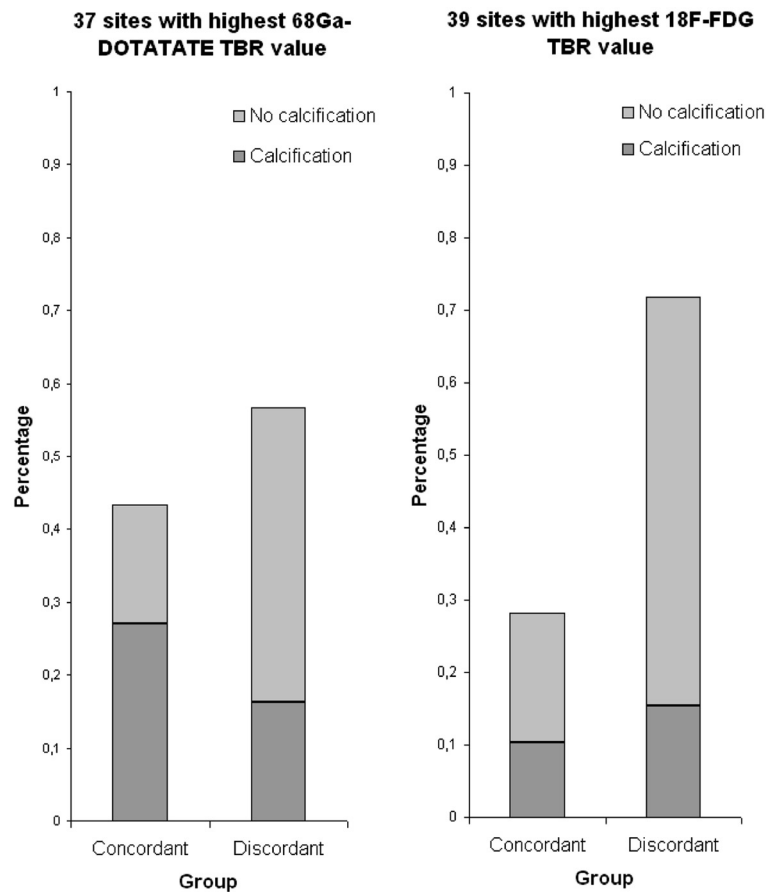


Figure 4 Colocalization of focal ⁶⁸Ga-DOTATATE and ¹⁸F-FDG uptake. Comparison of 37 foci of increased ⁶⁸Ga-DOTATATE uptake (left) and 39 foci of increased ¹⁸F-FDG uptake (right) with respect to colocalized focal uptake of the other radiotracer and calcification. Imaging findings were characterized as concordant when there was agreement in positive detection with both tracers, and as discordant in cases of discrepancy between the two tracers' uptake.

significantly higher in the high-risk group (at least two cardiovascular risk factors) as compared to the low-risk group (one cardiovascular risk factor at the most) (Figure 5). In contrast, for ¹⁸F-FDG, the TBR_{mean} and TBR_{abdominal} only showed a tendency for a higher uptake in the high-risk group; only the TBR value in the left iliac artery was found to be significantly higher ($p < 0.05$).

Correlation with risk factors

Table 4 shows the correlation of ¹⁸F-FDG and ⁶⁸Ga-DOTATATE TBR_{mean} values with clinical baseline characteristics. Hypertension significantly correlated with ¹⁸F-FDG ($r = 0.58$, $p < 0.05$) and also with ⁶⁸Ga-DOTATATE uptake ($r = 0.60$, $p < 0.01$). The ⁶⁸Ga-DOTATATE TBR_{mean} also showed a significant correlation with plaque burden ($r = 0.52$, $p < 0.05$), hypertension ($r = 0.60$, $p < 0.05$), and age ($r = 0.56$, $p < 0.05$). In addition, plaque burden was also significantly correlated with smoking ($r = 0.55$, $p < 0.05$) and a history of

cardiovascular disease ($r = 0.63$, $p < 0.01$). There was a significant correlation between the two tracers' uptake ($r = 0.64$, $p < 0.05$).

Reproducibility

The intraclass correlation coefficient values with 95% confidence were calculated for the maximum TBR and CPB of all arteries and are shown in Table S3 in Additional file 1. All ICCs were greater than 0.8.

Discussion

Our study was aimed at investigating the potential of ⁶⁸Ga-DOTATATE PET/CT to detect macrophage density at inflammatory lesions of large arteries. In addition, we compared the tracer uptake with that of ¹⁸F-FDG regarding colocalization and intensity of the uptake in correlation to commonly accepted risk factors for cardiovascular disease. To our knowledge, this is the first investigation to compare ¹⁸F-FDG and ⁶⁸Ga-DOTATATE in atherosclerosis imaging.

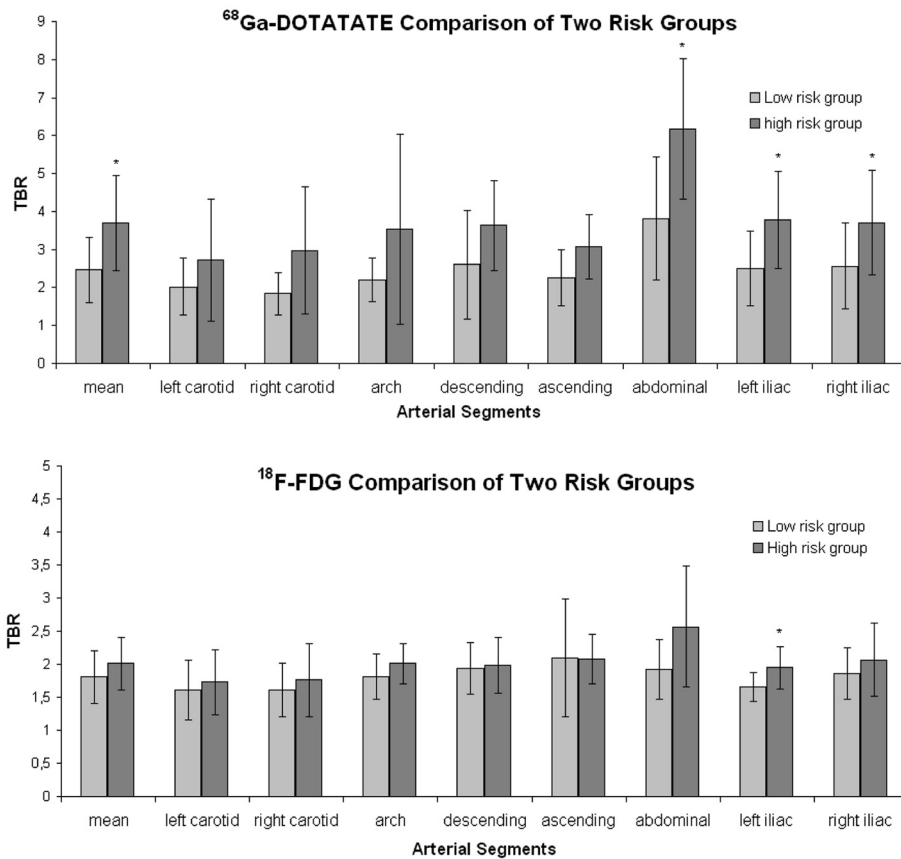


Figure 5 Comparison between high- and low-risk groups for cardiovascular disease. With regard to the ¹⁸F-FDG and ⁶⁸Ga-DOTATATE uptake of big arterial vessels and calcified plaques. One asterisk indicates that comparison is significant at the 0.05 level (two-tailed).

¹⁸F-FDG has already been established as a useful tool to identify inflammatory processes, e.g., in large arteries [17-22]. In general, it is taken up by cells in proportion to their metabolic activity. Rudd et al. and Tawakol et al. reported that carotid atherosclerotic plaques with high ¹⁸F-FDG uptake have a high macrophage density [20,21], indicating that ¹⁸F-FDG might be a useful tool to detect inflammatory plaques. ⁶⁸Ga-DOTATATE has also been demonstrated to detect activated macrophages [16] due to a specific overexpression of the SSTR-2, the specific molecular target of ⁶⁸Ga-DOTATATE, on the cell

surface of activated macrophages. Although the potential for macrophage detection has been demonstrated on both ¹⁸F-FDG and ⁶⁸Ga-DOTATATE, a concordant focally increased uptake was only found in the minority of cases in this study (Figure 4).

When comparing patients with and without risk factors for cardiovascular disease, many sites of tracer uptake could be detected both in high-risk and low-risk patients with ¹⁸F-FDG. In most arterial segments (apart from the ascending aorta), the maximum TBR values of the high-risk group were higher than those of the low-

Table 4 Correlation of ¹⁸F-FDG TBR_{mean} and ⁶⁸Ga-DOTATATE TBR_{mean} of eight arterial segments to the baseline characteristics

	Pearson's correlation coefficients for the correlation between risk factors and imaging results											
	Mean ¹⁸ F-FDG	Mean ⁶⁸ Ga-DOTATATE	PB	Hyperchol	HTN	Smoker	DM	Family history of CVD	CVD	Age	Gender	BMI
Mean ¹⁸ F-FDG	1	0.64 ^a	NS	NS	0.58 ^b	NS	NS	NS	NS	NS	NS	NS
Mean ⁶⁸ Ga-DOTATE	0.64 ^a	1	0.52 ^b	NS	0.60 ^b	NS	NS	NS	NS	0.56 ^b	NS	NS
PB	NS	0.52 ^b	1	NS	NS	0.55 ^b	NS	NS	0.63 ^a	NS	NS	NS

^aCorrelation is significant at the 0.01 level (two-tailed). ^bCorrelation is significant at the 0.05 level (two-tailed). BMI, body mass index; CAD, coronary artery disease; CVD, cardiovascular disease; DM, diabetes; HTN, hypertension; Hyperchol, hypercholesterolemia; NS, no significance; PB, plaque burden.

risk group. However, this difference did not reach statistical significance except for the left iliac artery (Figure 5).

There were few significant differences between the two tracers in the low-risk group. In the high-risk group, however, TBR for ^{68}Ga -DOTATATE showed significantly higher values than that for ^{18}F -FDG.

Additionally, significant correlations between the mean uptake of both tracers and the patients' score of risk factors were found. In the literature, several studies reported significant correlations between focally increased ^{18}F -FDG uptake in the walls of large arteries and the presence of cardiovascular risk factors, such as hypercholesterolemia, hypertension, age, and diabetes [24]. Other study groups found associations between the plaque burden of the left anterior descending coronary artery and cardiovascular risk factors [22,31]. In our study, only a significant correlation between the mean TBR in the abdominal aorta with hypertension was found. The lack of further correlations might be due to the small size of our sample. For ^{68}Ga -DOTATATE, tracer uptake correlated significantly with hypertension, age, and the presence of calcifications.

^{18}F -FDG uptake in inflammatory cells is influenced by macrophage differentiation and cell activation [25] since immune cell activation is associated with increased oxidative metabolism and, consequently, increased use of glucose [18]. In our investigation, we found many ^{18}F -FDG-positive sites both in the low- and high-risk groups, whereas very few ^{68}Ga -DOTATATE-positive foci could be found in low-risk individuals. This raises doubt whether all accumulations of ^{18}F -FDG within the arteries are due to macrophage-mediated inflammatory activity.

In contrast to ^{18}F -FDG, ^{68}Ga -DOTATATE visualizes the distribution of SSTR-2. As mentioned above, the specific expression of SSTR-2 on the surface of macrophages, as well as the significant upregulation of this receptor upon stimulation (e.g. with lipopolysaccharide), has been reported [14]. Furthermore, another research group observed that the expression of SSTR-2 in human coronary endothelial cells is decreased by treatment with the inflammatory cytokine TNF- α , which is mainly produced and secreted by activated macrophages [26]. Therefore, in the pro-inflammatory setting, SSTR-2 expression is upregulated for macrophages, whereas on the other hand, it is downregulated in endothelial cells. In coronary heart disease, this idea could support the use of ^{68}Ga -DOTATATE for the detection of vulnerable plaques.

SSTR-2 also plays another role in atherosclerotic plaques. Adams et al. demonstrated the increased expression of SSTR-2 when human umbilical vein endothelial cells are proliferating, thereby suggesting its active role

in angiogenesis, which has been described in the context of unstable plaques [32]. Consequently, ^{68}Ga -DOTATATE PET could be used to visualize unstable plaques in two different ways: detection of activated macrophages as well as angiogenesis within the atherosclerotic lesion [33]. Our results indicate that ^{68}Ga -DOTATATE PET detects a higher number of increased focal uptakes in patients with high cardiovascular risk; this may be used as a complementary imaging modality in the detection of inflammatory plaque by identifying somatostatin receptor-positive sites within the arteries.

In this study, risk factors for CAD correlated less strongly with foci of increased ^{18}F -FDG uptake as compared to those of ^{68}Ga -DOTATATE. This might be interpreted as an indication that ^{68}Ga -DOTATATE is more specific for the inflamed plaque. However, due to the small sample size of our investigation, it is difficult to draw firm conclusions. For example, another reason for the observed difference between the two tracers could be tracer kinetics. DOTATATE binds to the SSTR-2, and thus, the uptake is potentially limited by the number of saturated SSTR-2 receptors. This is not the case with FDG, which is continuously metabolized by activated macrophages. Otherwise, FDG as the smaller molecule is potentially more vulnerable to unspecific uptake mechanisms like increased vascular permeability due to inflammation. So, in theory, FDG should be more sensitive than DOTATATE but potentially less specific, which could explain the better correlation with different risk groups.

Another important limitation is the lack of histological validation of ^{68}Ga -DOTATATE uptake. Due to the retrospective design, a selection bias cannot be excluded. Also, this study was performed in cancer patients; therefore, our findings may be not generalizable to studies in vascular disease. Especially, we cannot exclude the influence of anticancer therapies or the hormone action of neuroendocrine tumors (Table 3). So far, no influence of TSH-suppressive therapy or peptide receptor radionuclide therapy (PRRT) on atherosclerosis has been published. In the only patient with PRRT, the interval to the PET scans was at least 8 weeks, so we do not expect any interference. Also, none of the two patients on chemotherapy was immunodeficient, according to their white blood cell count. However, further prospective studies in a higher number of non-oncological patients are warranted.

Conclusions

In this pilot trial, we found a stronger association of increased ^{68}Ga -DOTATATE uptake with known risk factors of cardiovascular disease as compared to ^{18}F -FDG in a limited number of oncological patients, suggesting a potential role of this tracer for plaque imaging in the

large arteries and coronaries. Strikingly, we found that the focal uptake of ^{68}Ga -DOTATATE and ^{18}F -FDG does not colocalize in a significant percentage of lesions. This warrants further investigation on the distribution of the two tracers within atherosclerotic plaques.

Additional file

Additional file 1: This file contains supplemental Tables S1, S2, S3, S4, S5, and S6.

Competing interests

The authors declare that they have no competing interests.

Authors' contributions

XL conducted the study, analyzed the data, and wrote the manuscript. SS supervised the work and gave input to the manuscript. CL analyzed the image data as well as clinical data and corrected the manuscript. Il synthesized the radiotracer. AKB supervised the study and the assessments and directed the focus of the research. MCK conceived of the study and study layout, performed the image analysis, and corrected and revised the manuscript. WB supervised the research area. All authors read and approved the final manuscript.

Acknowledgments

This work was supported by the German Research Foundation (Deutsche Forschungsgemeinschaft DFG) SFB 688 and by the Bundesministerium für Bildung und Forschung (BMBF01 EO1004). We thank Uwe Mäder for his support in the statistical analysis. This publication was funded by the German Research Foundation (DFG) and the University of Wuerzburg under the funding program Open Access Publishing.

Author details

¹Department of Nuclear Medicine, University of Wuerzburg, Oberdürrbacher Str. 6, Wuerzburg D-97080, Germany. ²Department of Internal Medicine I, University of Wuerzburg, Wuerzburg D-97080, Germany. ³Comprehensive Heart Failure Centre, University Hospital Wuerzburg, Wuerzburg D-97080, Germany.

Received: 19 July 2012 Accepted: 17 September 2012

Published: 27 September 2012

References

1. Williams KJ, Tabas I: **Atherosclerosis—an inflammatory disease.** *N Engl J Med* 1999, **340**(24):1928. author reply 1929.
2. Yusuf S, Reddy S, Ounpuu S, Anand S: **Global burden of cardiovascular diseases: part I: general considerations, the epidemiologic transition, risk factors, and impact of urbanization.** *Circulation* 2001, **104**(22):2746–2753.
3. Naghavi M, Libby P, Falk E, Casscells SW, Litovsky S, Rumberger J, Badimon JJ, Stefanadis C, Moreno P, Pasterkamp G, Fayad Z, Stone PH, Waxman S, Raggi P, Madjid M, Zarabi A, Burke A, Yuan C, Fitzgerald PJ, Sisovicck DS, de Korte CL, Aikawa M, Aikawa M, Airaksinen KEJ, Assmann G, Becker CR, Chesebro JH, Farb A, Galis ZS, Jackson C, Jang I-K: **From vulnerable plaque to vulnerable patient: a call for new definitions and risk assessment strategies: part I.** *Circulation* 2003, **108**(14):1664–1672.
4. Ross R: **Atherosclerosis—an inflammatory disease.** *N Engl J Med* 1999, **340**(2):115–126.
5. Hansson GK: **Inflammation, atherosclerosis, and coronary artery disease.** *N Engl J Med* 2005, **352**(16):1685–1695.
6. Guedes A, Tardif JC: **Intravascular ultrasound assessment of atherosclerosis.** *Curr Atheroscler Rep* 2004, **6**(3):219–224.
7. Tearney GJ, Jang IK, Bouma BE: **Optical coherence tomography for imaging the vulnerable plaque.** *J Biomed Opt* 2006, **11**(2):021002.
8. Voros S, Rinehart S, Qian Z, Joshi P, Vazquez G, Fischer C, Belur P, Hulten E, Villines TC: **Coronary atherosclerosis imaging by coronary CT angiography: current status, correlation with intravascular interrogation and meta-analysis.** *JACC Cardiovasc Imaging* 2011, **4**(5):537–548.
9. Kooi ME, Cappendijk VC, Cleutjens KB, Kessels AG, Kitslaar PJ, Borgers M, Frederik PM, Daemen MJ, van Engelshoven JM: **Accumulation of ultrasmall superparamagnetic particles of iron oxide in human atherosclerotic plaques can be detected by in vivo magnetic resonance imaging.** *Circulation* 2003, **107**(19):2453–2458.
10. Kaufmann BA, Sanders JM, Davis C, Xie A, Aldred P, Sarembock IJ, Lindner JR: **Molecular imaging of inflammation in atherosclerosis with targeted ultrasound detection of vascular cell adhesion molecule-1.** *Circulation* 2007, **116**(3):276–284.
11. Schafers M, Riemann B, Kopka K, Breyholz HJ, Wagner S, Schäfers KP, Law MP, Schober O, Levkau B: **Scintigraphic imaging of matrix metalloproteinase activity in the arterial wall in vivo.** *Circulation* 2004, **109**(21):2554–2559.
12. Razansky D, Harlaar NJ, Hillebrands JL, Tarutis A, Herzog E, Zeebregts CJ, van Dam GM, Ntziachristos V: **Multispectral optoacoustic tomography of matrix metalloproteinase activity in vulnerable human carotid plaques.** *Mol Imaging Biol* 2012, **14**(3):277–285.
13. Krantic S: **Peptides as regulators of the immune system: emphasis on somatostatin.** *Peptides* 2000, **21**(12):1941–1964.
14. Dalm VA, van Hagen PM, van Koetsveld PM, Achilefu S, Houtsmuller AB, Pols DH, van der Lely AJ, Lamberts SW, Hofland LJ: **Expression of somatostatin, cortistatin, and somatostatin receptors in human monocytes, macrophages, and dendritic cells.** *American Am J Physiol Endocrinol Metab* 2003, **285**(2):E344–E353.
15. Armani C, Catalani E, Balbarini A, Bagnoli P, Cervia D: **Expression, pharmacology, and functional role of somatostatin receptor subtypes 1 and 2 in human macrophages.** *J Leukoc Biol* 2007, **81**(3):845–855.
16. Rominger A, Saam T, Vogl E, Ubleis C, la Fougère C, Förster S, Haug A, Cumming P, Reiser MF, Nikolaou K, Bartenstein P, Hacker M: **In vivo imaging of macrophage activity in the coronary arteries using ^{68}Ga -DOTATATE PET/CT: correlation with coronary calcium burden and risk factors.** *J Nucl Med* 2010, **51**(2):193–197.
17. Ben-Haim S, Kupzov E, Tamir A, Israel O: **Evaluation of ^{18}F -FDG uptake and arterial wall calcifications using ^{18}F -FDG PET/CT.** *J Nucl Med* 2004, **45**(11):1816–1821.
18. Dunphy MP, Freiman A, Larson SM, Strauss HW: **Association of vascular ^{18}F -FDG uptake with vascular calcification.** *J Nucl Med* 2005, **46**(8):1278–1284.
19. Wu YW, Kao HL, Chen MF, Lee BC, Tseng WY, Jeng JS, Tzen KY, Yen RF, Huang PJ, Yang WS: **Characterization of plaques using ^{18}F -FDG PET/CT in patients with carotid atherosclerosis and correlation with matrix metalloproteinase-1.** *J Nucl Med* 2007, **48**(2):227–233.
20. Rudd JH, Warburton EA, Fryer TD, Jones HA, Clark JC, Antoun N, Johnström P, Davenport AP, Kirkpatrick PJ, Arch BN, Pickard JD, Weissberg PL: **Imaging atherosclerotic plaque inflammation with [^{18}F]fluorodeoxyglucose positron emission tomography.** *Circulation* 2002, **105**(23):2708–2711.
21. Tawakol A, Migrino RQ, Bashian GG, Bedri S, Vermynen D, Cury RC, Yates D, LaMuraglia GM, Furie K, Houser S, Gewirtz H, Muller JE, Brady TJ, Fischman AJ: **In vivo ^{18}F -fluorodeoxyglucose positron emission tomography imaging provides a noninvasive measure of carotid plaque inflammation in patients.** *JACC* 2006, **48**(9):1818–1824.
22. Saam T, Rominger A, Wolpers S, Nikolaou K, Rist C, Greif M, Cumming P, Becker A, Foerster S, Reiser MF, Bartenstein P, Hacker M: **Association of inflammation of the left anterior descending coronary artery with cardiovascular risk factors, plaque burden and pericardial fat volume: a PET/CT study.** *Eur J Nucl Med Mol Imaging* 2010, **37**(6):1203–1212.
23. Kato K, Schober O, Ikeda M, Schäfers M, Ishigaki T, Kies P, Naganawa S, Stegger L: **Evaluation and comparison of ^{11}C -choline uptake and calcification in aortic and common carotid arterial walls with combined PET/CT.** *Eur J Nucl Med Mol Imaging* 2009, **36**(10):1622–1628.
24. Yun M, Jang S, Cucchiara A, Newberg AB, Alavi A: **^{18}F FDG uptake in the large arteries: a correlation study with the atherogenic risk factors.** *Semin Nucl Med* 2002, **32**(1):70–76.
25. Deichen JT, Prante O, Gack M, Schmiedehausen K, Kuwert T: **Uptake of [^{18}F]fluorodeoxyglucose in human monocyte-macrophages in vitro.** *Eur J Nucl Med Mol Imaging* 2003, **30**(2):267–273.
26. Yan S, Li M, Chai H, Yang H, Lin PH, Yao Q, Chen C: **TNF- α decreases expression of somatostatin, somatostatin receptors, and cortistatin in human coronary endothelial cells.** *J Surg Res* 2005, **123**(2):294–301.

27. Agatston AS, Janowitz WR, Hildner FJ, Zusmer NR, Viamonte M Jr: **Detranon R: Quantification of coronary artery calcium using ultrafast computed tomography.** *JACC* 1990, **15**(4):827–832.
28. Schlosser T, Hunold P, Schmermund A, Kühl H, Waltering KU, Debatin JF, Barkhausen J: **Coronary artery calcium score: influence of reconstruction interval at 16-detector row CT with retrospective electrocardiographic gating.** *Radiology* 2004, **233**(2):586–589.
29. Forster S, Rominger A, Saam T, Wolpers S, Nikolaou K, Cumming P, Reiser MF, Bartenstein P, Hacker M: **18F-fluoroethylcholine uptake in arterial vessel walls and cardiovascular risk factors: correlation in a PET-CT study.** *Nuklearmedizin* 2010, **49**(4):148–153.
30. Rudd JH, Myers KS, Bansilal S, Machac J, Pinto CA, Tong C, Rafique A, Hargeaves R, Farkouh M, Fuster V, Fayad ZA: **Atherosclerosis inflammation imaging with 18F-FDG PET: carotid, iliac, and femoral uptake reproducibility, quantification methods, and recommendations.** *J Nucl Med* 2008, **49**(6):871–878.
31. Rominger A, Saam T, Wolpers S, Cyran CC, Schmidt M, Foerster S, Nikolaou K, Reiser MF, Bartenstein P, Hacker M: **18F-FDG PET/CT identifies patients at risk for future vascular events in an otherwise asymptomatic cohort with neoplastic disease.** *J Nucl Med* 2009, **50**(10):1611–1620.
32. Adams RL, Adams IO, Lindow SW, Zhong W, Atkin SL: **Somatostatin receptors 2 and 5 are preferentially expressed in proliferating endothelium.** *Br J Cancer* 2005, **92**(8):1493–1498.
33. McCarthy MJ, Loftus IM, Thompson MM, Jones L, London NJ, Bell PR, Naylor AR, Brindle NP: **Angiogenesis and the atherosclerotic carotid plaque: an association between symptomatology and plaque morphology.** *J Vasc Surgery* 1999, **30**(2):261–268.

doi:10.1186/2191-219X-2-52

Cite this article as: Li et al.: ⁶⁸Ga-DOTATATE PET/CT for the detection of inflammation of large arteries: correlation with ¹⁸F-FDG, calcium burden and risk factors. *EJNMMI Research* 2012 **2**:52.

Submit your manuscript to a SpringerOpen[®] journal and benefit from:

- ▶ Convenient online submission
- ▶ Rigorous peer review
- ▶ Immediate publication on acceptance
- ▶ Open access: articles freely available online
- ▶ High visibility within the field
- ▶ Retaining the copyright to your article

Submit your next manuscript at ▶ springeropen.com
