

2016

Characterisation of Strip Silicon Detectors for the ATLAS Phase-II Upgrade With a Micro-Focused X-ray Beam

L. Poley

Deutsches Elektronen-Synchrotron, Germany

A. Blue

University of Glasgow, Scotland

R. Bates

University of Glasgow, Scotland

See next page for additional authors

Follow this and additional works at: <https://arrow.tudublin.ie/scschphyart>



Part of the [Physics Commons](#)

Recommended Citation

Poley, L., Blue, A. & Bates, R. (2016). Characterisation of Strip Silicon Detectors for the ATLAS Phase-II Upgrade With a Micro-Focused X-ray Beam. *Journal of Instrumentation*, *i*, vol. 11. doi:10.1088/1748-0221/11/07/P07023

This Article is brought to you for free and open access by the School of Physics & Clinical & Optometric Science at ARROW@TU Dublin. It has been accepted for inclusion in Articles by an authorized administrator of ARROW@TU Dublin. For more information, please contact arrow.admin@tudublin.ie, aisling.coyne@tudublin.ie.



This work is licensed under a [Creative Commons Attribution-NonCommercial-Share Alike 4.0 License](#)

Authors

L. Poley, A. Blue, R. Bates, I. Bloch, S. Diez, J. Fernandez-Tejero, C. Fleta, B. Gallop, B. Greenall, I.M. Gregor, K. Hara, Y. Ikegami, C. Lacasta, K. Lohwasser, D. Maneuski, S. Nagorski, I. Pape, P.W. Phillips, D. Sperlich, and K. Sawhney

OPEN ACCESS

Characterisation of strip silicon detectors for the ATLAS Phase-II Upgrade with a micro-focused X-ray beam

To cite this article: L. Poley *et al* 2016 *JINST* **11** P07023

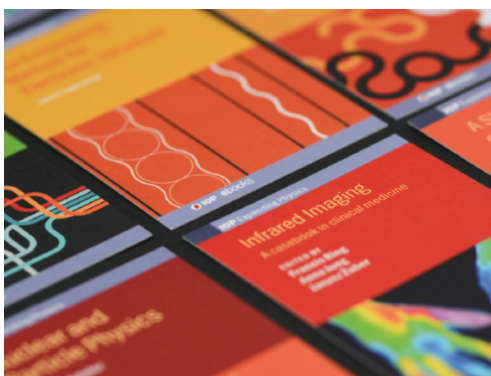
View the [article online](#) for updates and enhancements.

Related content

- [Alternative glues for the production of ATLAS silicon strip modules for the Phase-II upgrade of the ATLAS Inner Detector](#)
L. Poley, I. Bloch, S. Edwards *et al*.
- [The ITk Strip Tracker for the phase-II upgrade of the ATLAS detector of the HL-LHC](#)
A. Koutoulaki
- [High voltage multiplexing for the ATLAS Tracker Upgrade](#)
E G Villani, P Phillips, J Matheson *et al*.

Recent citations

- [Investigations into the impact of locally modified sensor architectures on the detection efficiency of silicon micro-strip sensors](#)
L. Poley *et al*



IOP | ebooks™

Bringing together innovative digital publishing with leading authors from the global scientific community.

Start exploring the collection—download the first chapter of every title for free.

Characterisation of strip silicon detectors for the ATLAS Phase-II Upgrade with a micro-focused X-ray beam

L. Poley,^{a,1} A. Blue,^b R. Bates,^b I. Bloch,^a S. Díez,^a J. Fernandez-Tejero,^c C. Fleta,^c B. Gallop,^d A. Greenall,^e I.-M. Gregor,^a K. Hara,^f Y. Ikegami,^g C. Lacasta,^h K. Lohwasser,^a D. Maneuski,^b S. Nagorski,ⁱ I. Pape,^j P.W. Phillips,^d D. Sperlich,^k K. Sawhney,^j U. Soldevila,^h M. Ullan,^c Y. Unno^g and M. Warren^l

^aDeutsches Elektronen-Synchrotron, Notkestraße, Hamburg, Germany

^bSUPA School of Physics and Astronomy, University of Glasgow, University Avenue, Glasgow, United Kingdom

^cCentro Nacional de Microelectrónica (IMB-CNM), Consejo Superior de Investigaciones Científicas, Campus UAB-Bellaterra, Barcelona, Spain

^dParticle Physics Department, STFC Rutherford Appleton Laboratory, Harwell Science and Innovation Campus, Didcot, United Kingdom

^eDepartment of Physics, University of Liverpool, Cambridge Street, Liverpool, United Kingdom

^fInstitute of Pure and Applied Sciences, University of Tsukuba, Tennodai, Tsukuba, Japan

^gInstitute of Particle and Nuclear Study, KEK, Oho, Tsukuba, Japan

^hIFIC, CSIC-U. Valencia, c/ Catedrático José Beltrán, Paterna, Spain

ⁱSchool of Physics, Dublin Institute of Technology, Kevin Street, Dublin, Ireland

^jDiamond Light Source Ltd, Diamond House, Harwell Science and Innovation Campus, Didcot, United Kingdom

^kInstitut für Physik, Humboldt-Universität zu Berlin, Newtonstraße, Berlin, Germany

^lDepartment of Physics and Astronomy, University College London, Gower Street, London, United Kingdom

E-mail: Anne-Luise.Poley@desy.de

ABSTRACT: The planned HL-LHC (High Luminosity LHC) in 2025 is being designed to maximise the physics potential through a sizable increase in the luminosity up to $6 \cdot 10^{34} \text{ cm}^{-2} \text{ s}^{-1}$. A consequence of this increased luminosity is the expected radiation damage at 3000 fb^{-1} after ten years of operation, requiring the tracking detectors to withstand fluences to over $1 \cdot 10^{16} \text{ 1 MeV n}_{\text{eq}}/\text{cm}^2$. In order to cope with the consequent increased readout rates, a complete re-design of the current ATLAS Inner Detector (ID) is being developed as the Inner Tracker (ITk).

¹Corresponding author.

Two proposed detectors for the ATLAS strip tracker region of the ITk were characterized at the Diamond Light Source with a 3 μm FWHM 15 keV micro focused X-ray beam. The devices under test were a 320 μm thick silicon stereo (Barrel) ATLAS12 strip mini sensor wire bonded to a 130 nm CMOS binary readout chip (ABC130) and a 320 μm thick full size radial (end-cap) strip sensor - utilizing bi-metal readout layers - wire bonded to 250 nm CMOS binary readout chips (ABCN-25).

A resolution better than the inter strip pitch of the 74.5 μm strips was achieved for both detectors. The effect of the p-stop diffusion layers between strips was investigated in detail for the wire bond pad regions.

Inter strip charge collection measurements indicate that the effective width of the strip on the silicon sensors is determined by p-stop regions between the strips rather than the strip pitch.

KEYWORDS: Inspection with x-rays; Si microstrip and pad detectors; Hybrid detectors; Instrumentation for particle accelerators and storage rings - high energy (linear accelerators, synchrotrons)

ARXIV EPRINT: [1603.04846](https://arxiv.org/abs/1603.04846)

Contents

1	Introduction	1
2	Devices	2
2.1	ABCN-25 end-cap module	2
2.2	ABC130 mini module	2
3	Sensor scans at the Diamond Synchrotron	3
3.1	X-ray beam	3
3.2	DAQ and readout	4
4	Performed scans	5
5	Results	7
5.1	Effective strip width	7
6	Conclusion and outlook	8

1 Introduction

Around 2025, the Large Hadron Collider (LHC) at CERN will be upgraded to an instantaneous luminosity of $\mathcal{L} = 6 \cdot 10^{34} \text{ cm}^{-2}\text{s}^{-1}$ from the design luminosity of $\mathcal{L} = 1 \cdot 10^{34} \text{ cm}^{-2}\text{s}^{-1}$ (High Luminosity LHC) [1]. The corresponding upgrade of the ATLAS detector at the LHC will require the replacement of the current ID [2] with a new Inner Tracker (ITk) [3].

Unlike the current Inner Detector (ID), the ITk will be an all-silicon tracker, constructed to maintain tracking performance in the high occupancy environment and to cope with the increase of approximately a factor of ten in the total radiation fluence. New technologies are used to ensure that the system can survive this harsh radiation environment and to optimise the distribution of material. A new readout scheme allows the implementation of a track trigger, which will significantly improve the ATLAS data taking capabilities.

The ITk will consist of both pixel and strip detectors, consisting of a central barrel region (with sensor strips are aligned parallel to the beam) between $\pm 1.4 \text{ m}$ and two end-caps (with sensor strips orthogonal to the beam) that extend the length of the strip detector to $\pm 3 \text{ m}$. The detectors cover ± 2.5 units of pseudorapidity [3].

Silicon strip sensors for the future ATLAS detector have been developed, and detector module prototypes have been constructed [4]. In ongoing R&D efforts, current versions of module components are being improved towards designs suitable for the future ATLAS strip tracker.

This paper describes the use of a micro focused X-ray beam for precise scans across several sensor strips [5, 6]. The scan was conducted to compare the signals collected for two silicon strip detector modules from two successive module designs. As well as investigating details of the new ATLAS12 strip layout, this also allowed the performance of the binary readout chip (ABC130) to be compared to its predecessor (ABCN-25).

2 Devices

The devices investigated in the testbeam were constructed as similarly as possible to the required future strip tracker modules, given current availability of components [7]. Each module consisted of a prototype of an actual silicon micro strip sensor, onto which a hybrid with front-end readout chips was glued [8]. Aluminium wedge wire bonding was used both to connect the sensor strips and ASIC readout channels and to connect the ASICs and hybrid electrically. Both tested devices are described in detail in the following sections 2.1 and 2.2. The devices were mounted on test frames, which provided high voltage to bias the sensor as well as low voltage to power the hybrid and an interface to the readout electronics.

The strip sensors used in both modules were AC-coupled with n-type implants in a p-type float-zone silicon bulk (n in p FZ). Signals were read out using an FPGA development board (ATLYS) with the C++ based framework SCTDAQ, which was developed for the Semiconductor Tracker (SCT) in the current ATLAS detector and modified for the operation of modules for the future ATLAS strip tracker.

In preparation for test beam operation, both devices were tested in the lab using the SCTDAQ framework. The performance of all readout channels, such as input noise and gain, was determined using known injected charges, generated on calibration capacitors present on the ASIC. Using these measurements, all channels were trimmed to have comparable thresholds: in absence of any signal in the sensor, all channels were adjusted to use the same threshold starting point (corresponding to 0 fC input charge), see table 1.

2.1 ABCN-25 end-cap module

The module built using ABCN-25 binary readout chips was an end-cap module. It consisted of a hybrid with twelve ABCN-25 readout chips [9] that had been glued to two silicon sensors (see figure 1). The silicon is 320 μm thick and each sensor comprises two rows of parallel strips with a combined length of 38.7 mm. The circular shape of an end-cap leads to wedge shaped sensors with strip pitches increasing towards outer radii from 93 μm to 106 μm [10].

The module was operated at a reverse bias voltage of 120 V (over-depleted as the voltage for full depletion of the p-n diode is $V_{\text{depletion}} \approx 50$ V). The device was operated on an aluminium plated jig cooled down to 10 $^{\circ}\text{C}$ by a chiller to compensate for the heat produced by the readout chips (≈ 300 mW per ABCN-25 ASIC) [9].

2.2 ABC130 mini module

The baseline design of the new strips tracker envisages binary readout by means of the ABC130 readout ASIC [8, 11], fabricated in the 8RF 130 nm CMOS technology from IBM Semiconductors. The first batch of ABC130 was produced and delivered in November 2013 and is currently under test. The current proposal is that any future CMOS ASIC for the ITK Strips will utilise the same front-end designs.

Preliminary tests of the initial production of the ABC130 chips have been performed. Communication and configuration of the chips work correctly. Data readout at a rate of 80 MHz has been achieved, and the current consumption of the chip has been reduced significantly (as expected as a

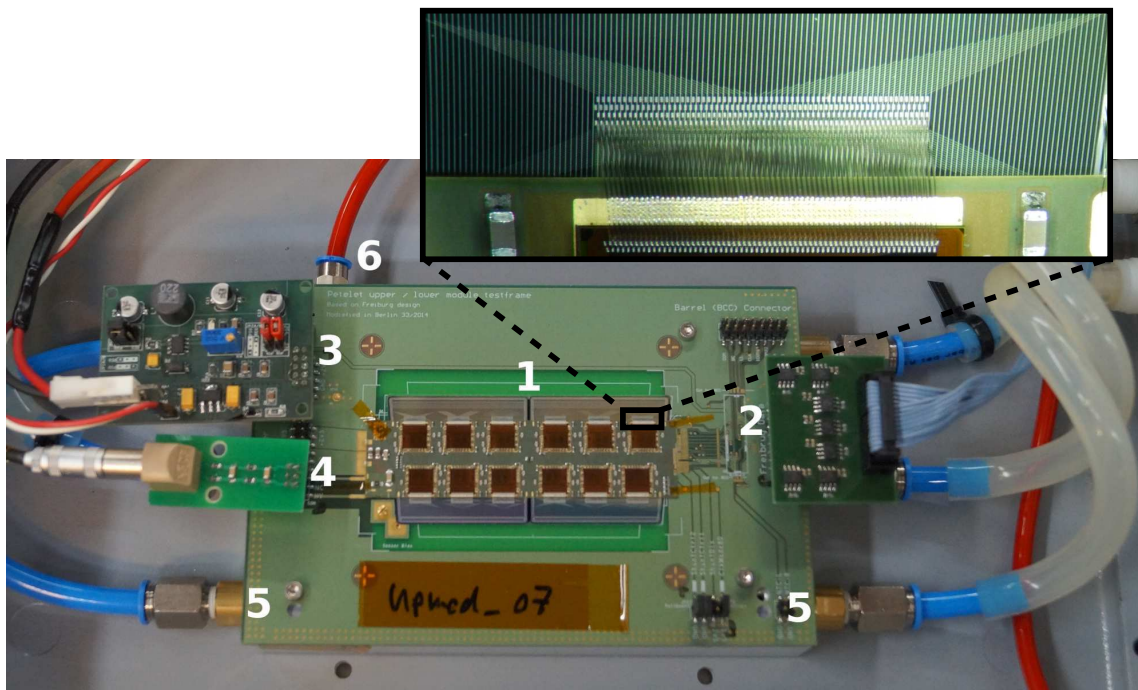


Figure 1. ABCN-25 end-cap module as operated in the test beam. The module (1), consisting of two sensors, connected by a hybrid with twelve readout chips, was mounted on a test frame with a connector for data readout (2), low voltage (3) to power the module, high voltage (4) to bias the sensor, cooling tubes (5) leading through the mounting jig and a vacuum line (6) for a good contact between module and cooling jig. The sensor strip orientation is shown in a magnified sensor area with wire bond connections between strips and readout channels.

consequence of the 130 nm process) to give an estimated 3 W/module, as compared to the current 20 W/module for the present ABCN-25 chip fabricated in a 250 nm process.

To further test the new ABC130 readout chip and ATLAS12 strip layout, a mini version of a full-scale module was assembled. Three ABC130 chips were glued to an FR4 hybrid, with two of these wire bonded to ATLAS12 mini sensors [12], see figure 2. The mini sensors under test consisted of 104 strips (74.5 μm pitch in 2 rows) with punch through protection (PTP) structures and an overall size of $1 \times 1 \text{ cm}^2$.

All data were multiplexed through the hybrid control chip (HCC), and routed via a custom designed PCB along with HV and LV connections. The HCC interfaces the ABC130 ASICs on the hybrid to the to end of structure electronics.

A reverse bias of 300 V was applied to fully deplete the mini sensors. The low power output meant that the detector did not have to be cooled whilst in operation.

3 Sensor scans at the Diamond Synchrotron

3.1 X-ray beam

The measurements presented here were all performed at the B16 beamline at the Diamond Synchrotron Light Source. This beam line comprises of a water-cooled fixed-exit double crystal

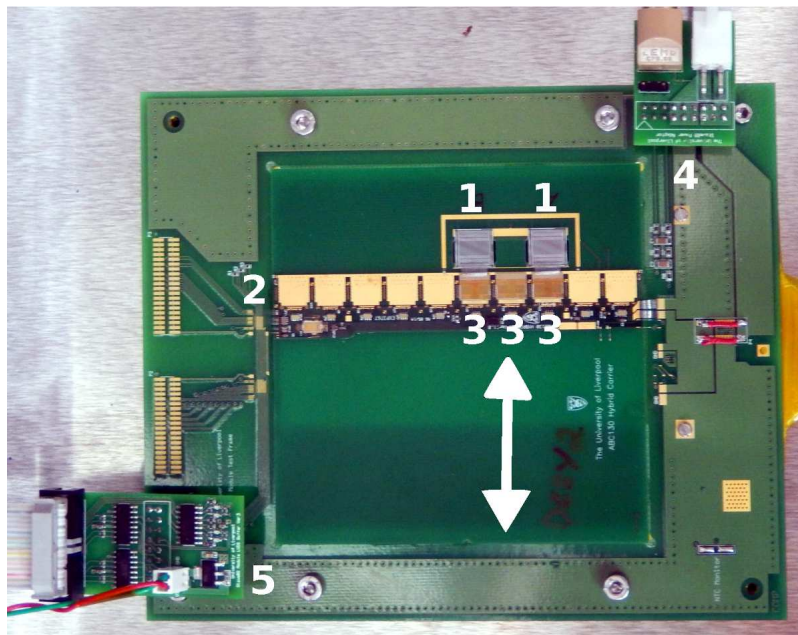


Figure 2. ABC130 mini module mounted on a test frame. The device consists of two miniature prototypes of ATLAS silicon strip sensors (1), a hybrid (2) with three ABC130 readout chips (3), wire bonded to the miniature sensors. The device is mounted on a test frame, providing power (4) and an interface to the readout electronics (5). The arrow indicates the sensor strip orientation.

monochromator that is capable of providing monochromatic beams over a 4 – 20 keV photon energy range. An unfocused monochromatic beam is provided to the experimental hutch. A compound refractive lens (CRL) was used to produce a 15 keV micro-focused X-ray beam.

The size of the micro-focused beam was determined by measuring transmissions scans with a 200 μm gold wire. Scans were made in both x and y across the beam, and the derivative of these scans indicated the beam size to have a sigma of 2.6 μm and 1.3 μm in the vertical and horizontal directions respectively (see figures 3a and 3b).

3.2 DAQ and readout

For data acquisition, a machine trigger from the beam was reduced from 2 MHz to 1 kHz and fed in to the Digilent ATLYS readout board utilising a Xilinx Spartan 6 LX45 FPGA. The devices were located on a stage which could be moved precisely, via custom Python scripts, in 3 dimensions (x, y and z). A signal was sent after the stage movement was complete to the DAQ to start the data acquisition. This allowed for a highly automated, fast and efficient run control for all scans taken during the allocated beam time.

With both detectors operating a 40 MHz clock, it was expected based on the beam current that there was average of 2-3 photons traversing the silicon sensors in the 25 ns collection time. Since each 15 keV photon has 51.07% chance of interaction with 320 μm silicon [13], the majority of acquisitions contained single X-ray photon events, with each 15 keV interaction depositing about 4200 electrons (due to the 3.6 eV electron hole pair creation energy of silicon). This is equivalent to 0.67 fC, corresponding to a threshold of about 100 mV (trimming: 0 fC $\hat{=}$ 54 mV) in the ABC130

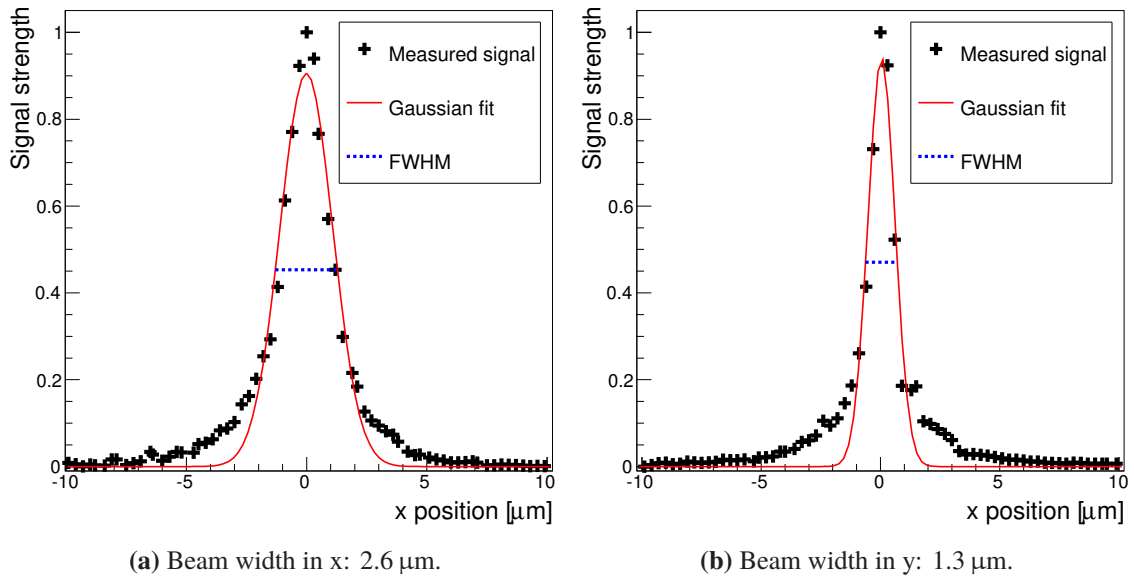
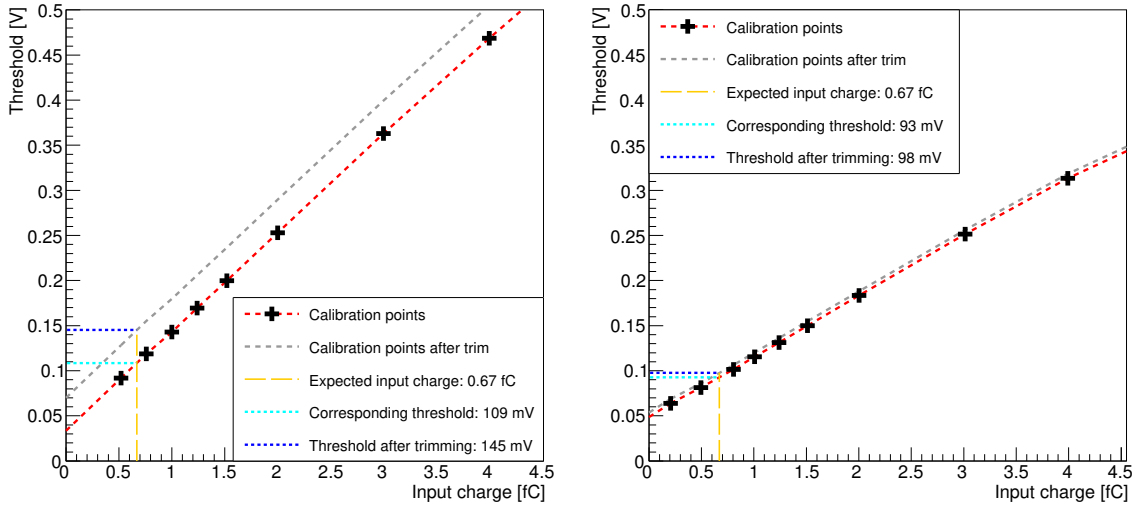


Figure 3. Diamond X-ray beam profiles in x and y measured using a gold wire.

device and about 150 mV (trimming: $0 \text{ fC} \hat{=} 70 \text{ mV}$) in the ABCN-25 device (see figures 4a and 4b). All data were written to disk by the DAQ as custom histograms, and analysis scripts written in ROOT to study signal responses at various positions and thresholds.

4 Performed scans

The X-ray beam profile, $2.6 \cdot 1.3 \mu\text{m}^2$, was sufficiently small compared to the strip pitch to resolve the transverse sensor structure by performing threshold scans for different beam positions across the strips. The two devices (end-cap sensor with ABCN-25 hybrid and barrel sensor with ABC130 hybrid) were positioned differently in the X-ray beam: for the end-cap sensor the stage scan caused the beam to traverse a set of strips some distance from the bond pads while for the barrel sensor the beam traversed the region of the bond pads. Threshold scans across three sensor strips were performed for both devices: for each position of the beam on the sensor, the same number of triggers was sent to the readout system for a range of thresholds in order to investigate the input charge in different regions between sensor strips with a binary readout system. Table 1 shows an overview of the scanning parameters for both devices at each position of the stage. With these scans, the influence of p-stop regions on the overall signal shape was also investigated. P-stops are implanted in the p-doped sensor between the n-doped strips in order to avoid short-circuits on the sensor surface after irradiation. On most of the sensor area, p-stops are implanted parallel to the strips with equal distances to both adjacent strips, but where the strips are connected to the ASIC readout channels via wire bonds, p-stops are placed around the required aluminium bond pads (see figure 5). Positioning p-stops at a sufficient distance from the wire bond pads leads to uneven distances to the adjacent sensor strips on the left and right side of the p-stop. In the ATLAS12 mini-sensors under test, the wire bond pad structures account for one third of the sensor surface.



(a) Calibration curve for ABCN-25 device: the threshold corresponding to the expected input charge is 109/145 mV before/after trimming.

(b) Calibration curve for ABC130 device: the threshold corresponding to the expected input charge is 93/98 mV before/after trimming.

Figure 4. Threshold settings corresponding to different input charges, determined by internal calibration circuits of the devices under test (red lines). Due to internal noise of the ASIC, an input charge of 0 fC corresponds to threshold levels of 30/40 mV for the ABCN-25/ABC130 device (without trimming). Each data point (black markers) represents an average of the input channels of one ASIC. Channels with higher thresholds were used as an input to raise the thresholds of all channels to the same level (dashed grey line) for uniformity over a whole ASIC, leading to overall higher threshold levels. As a consequence, the threshold corresponding to the expected input charge for single photon events (orange line) increases (dark blue line compared to light blue line).

	End-cap module	Barrel module
Strip pitch, [μm]	103	74.5
p-stop	regular	irregular
Scan length, [μm]	190	210
Position step size, [μm]	10	5
Threshold range, [mV]	80.0-444.8	73.2-397.8
Trimming	0 fC = 70 mV	0 fC = 53.6 mV
Triggers per threshold	3500	10000
Readout chips	ABCN-25	ABC130

Table 1. Overview of the scanning parameters performed for two silicon strip sensors.

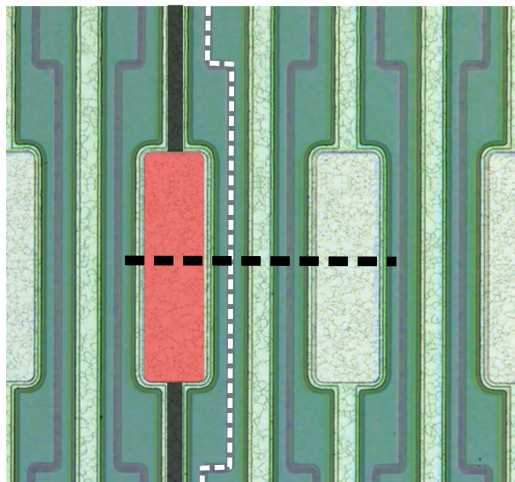


Figure 5. Silicon strip sensor with a strip pitch of $74.5\ \mu\text{m}$. Aluminium bond pads (red area) are added to the strips (dark grey area) to allow for electrical connections between sensor strips and readout channels by wire bonds. With the width of the bond pads being close to the strip pitch, the p-stops (dashed white line) need to be guided around the bond pads, leading to a larger distance to the strip implant beneath the bond pad and a smaller distance to the adjacent strip implant without a bond pad. The dashed black line indicates the approximate beam positions during the scan.

The effects of these p-stop shapes were investigated by scanning across one of these regions of the sensor and are shown in section 5.1. Comparative scans were also made in the centre of the conventional p-stop doping regions.

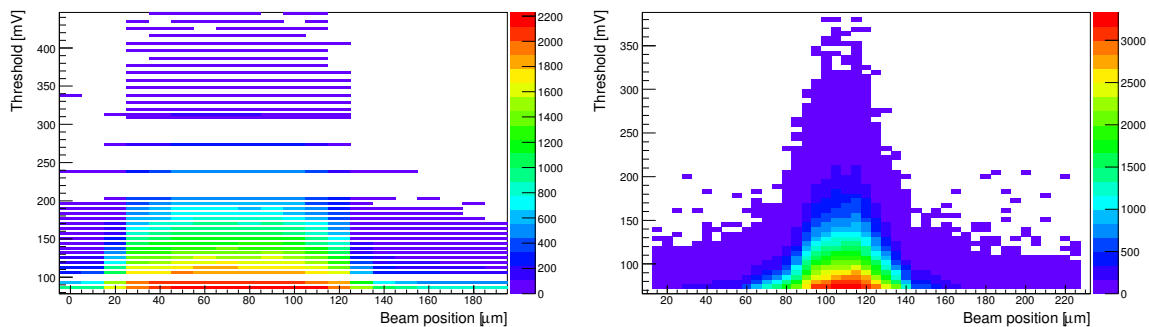
5 Results

Figure 6 shows the results for threshold scans across three strips ($10\ \mu\text{m}$ steps) of an end-cap sensor (see figure 6a) and a barrel mini sensor (figure 6b). Due to different scanning parameters (see table 1), in particular number of triggers and trimming, the numbers of obtained hits per position and thresholds differ between the two devices and do not allow a direct comparison of both devices. They do, however, allow for a comparison of the width of a sensor area connected to one readout channel with the nominal strip widths of each sensor.

For the ABCN-25 sensor, the hits obtained from an individual channel show the expected behaviour: over a scan distance of $200\ \mu\text{m}$, matching the sensor strip pitch in that region of $103\ \mu\text{m}$, the channel shows hits up to high thresholds. On the ABC130 module, the scan shows a detection range smaller than the expected strip pitch of $74.5\ \mu\text{m}$ for the central strip (see below). Outside the region of the central strip, high rates were measured for low thresholds, corresponding to noise.

5.1 Effective strip width

In order to relate the hits measured across individual strips to the sensor geometry, a reasonable threshold was selected to compare the hits from all channels connected to sensor strips covered in the scans. Figures 7a and 7b show the resulting strip shapes for the ABCN-25 endcap module and the ABC130 mini module, respectively. For the ABCN-25 end-cap module, where the scan was



(a) Hits obtained from one channel of an ABCN-25 module while scanning across the connected silicon sensor strip in steps of $10\ \mu\text{m}$. (b) Hits obtained from one channel of an ABC130 mini module while scanning across the connected silicon sensor strip in steps of $5\ \mu\text{m}$.

Figure 6. Fine strip scans across three strips of a sensor for only the central strip, measured repeatedly at each beam position by using the same number of triggers for different readout thresholds. Due to time constraints, the scanning time for the ABCN-25 module (left) had to be reduced by increasing the position step size and decreasing the numbers of thresholds and triggers in the scan, leading to an overall lower number of hits per bin.

performed in a sensor area without bond pads, all three strips under investigation show the same hit rates and shape across the strip. The width of the detection range matches the strip pitch of the sensor, as expected.

For the ABC130 module, the adjacent channels registered hits over areas of different widths. Comparing the width of the channels' detection ranges to the sensor geometry, the detected hits were found to agree well with the p-stop geometry in the measured area, indicating that the sensor geometry affects the effective width of a sensor strip. Independent of the width of the detection range, the hit rate at the central region of a channel is similar for all channels.

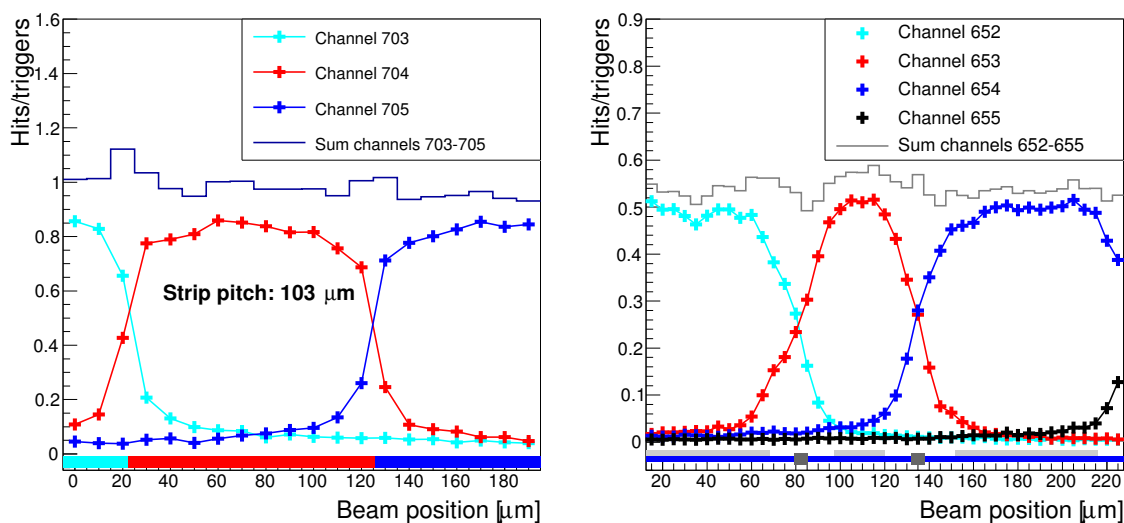
6 Conclusion and outlook

X-ray beam scans in steps of $5\ \mu\text{m}$ and $10\ \mu\text{m}$ were performed for two silicon strip detector modules for the ATLAS Phase-II Upgrade. The results show that the effective width of silicon strip sensors is determined by the local sensor geometry (bond pads on top of strips and p-stops between strips) rather than the pitch of the strip implants.

Future plans for the investigations of silicon strip modules foresee a crosscheck of the results found using an X-ray beam by using an electron particle beam. Additionally, the measurements performed for non-irradiated sensors are planned to be repeated using hadron irradiated silicon sensors in order to analyse changes in signal collection and efficiency caused by radiation damages.

Acknowledgments

We thank Diamond Light Source for access to beamline B16 (proposal number MT11639) that contributed to the results presented here. The authors would like to thank personnel of the B16 beam, especially Andy Malandain and Julien Marchal for providing advice, support and maintenance during the experiment.



(a) ABCN-25 module sensor scan: individual and combined hits from three adjacent strips for a fine strip scan across three strips (cyan, red and blue), showing the individual hits at a threshold of 105.6 mV. The collected hits for the three channels fit both the positions of the strips and the sensor strip pitch well. This sensor does not have p-stop implants.

(b) ABC130 module sensor scan: individual and combined hits from four adjacent channels at a possible operating threshold of 80 mV with the corresponding sensor geometry: silicon (blue), aluminium layer (light grey) and p-stops (dark grey). The hits can be seen to agree well with the expected locations of p-stops and sensor strips.

Figure 7. Hit rates from several adjacent channels for an ABCN-25 module and an ABC130 mini module at given thresholds. The hit/trigger levels of both devices can not be compared directly due to different trimming settings and a reduced number of triggers for the ABCN-25 module (left), leading to its overall lower hit rate.

References

- [1] L Rossi, *LHC Upgrade Plans: Options and Strategy*, [CERN-ATS-2011-257](#) (2011).
- [2] ATLAS collaboration, *ATLAS inner detector: Technical Design Report, 1*, CERN-LHCC-97-16, ATLAS-TDR-4 (1997).
- [3] ATLAS collaboration, *Letter of Intent for the Phase-II Upgrade of the ATLAS Experiment*, [CERN-LHCC-2012-022](#) (2012).
- [4] P.P. Allport et al., *Progress with the single-sided module prototypes for the ATLAS tracker upgrade stave*, *Nucl. Instrum. Meth. A* **636** (2011) S90.
- [5] D. Maneuski et al., *Edge pixel response studies of edgeless silicon sensor technology for pixellated imaging detectors*, *2015 JINST* **10** P03018.
- [6] R. Bates et al., *Characterisation of edgeless technologies for pixellated and strip silicon detectors with a micro-focused X-ray beam*, *2013 JINST* **8** P01018.
- [7] ATLAS ITK STRIP PETALET collaboration, *Development and investigation of hybrids and modules for the Phase-II Upgrade of the forward region of the silicon strip tracking detector of the ATLAS Experiment*, in preparation.

- [8] K. Mahboubi et al., *The front-end hybrid for the ATLAS HL-LHC silicon strip tracker*, 2014 *JINST* **9** C02027.
- [9] F. Anghinolfi et al., *Performance of the ABCN-25 readout chip for the ATLAS Inner Detector Upgrade*, CERN-2009-006.62 (2009).
- [10] V. Benitez et al., *Sensors for the End-Cap Prototype of the Inner Tracker in the ATLAS Detector Upgrade*, Technical report, CERN, Geneva, 2015.
- [11] J. Kaplon and M. Noy, *Front end electronics for slhc semiconductor trackers in cmos 90 nm and 130 nm processes*, in proceedings of *IEEE Nuclear Science Symposium and Medical Imaging Conference (NSS/MIC)*, October (2011), pg. 1955–1960.
- [12] Y. Unno et al., *Development of n^+ -in-p large-area silicon microstrip sensors for very high radiation environments — ATLAS12 design and initial results*, *Nucl. Instrum. Meth. A* **765** (2014) 80.
- [13] P.J. Linstrom and W.G. Mallard, *NIST Chemistry WebBook, NIST Standard Reference Database Number 69*, National Institute of Standards and Technology, Gaithersburg MD U.S.A., 20899, June 2005.