



Implementation of  
the CLaMS  
Lagrangian Transport  
core into EMAC

C. M. Hoppe et al.

# The implementation of the CLaMS Lagrangian transport core into the chemistry climate model EMAC 2.40.1: application on age of air and transport of long-lived trace species

C. M. Hoppe<sup>1</sup>, L. Hoffmann<sup>2</sup>, P. Konopka<sup>1</sup>, J.-U. GroöB<sup>1</sup>, F. Ploeger<sup>1</sup>, G. Günther<sup>1</sup>,  
P. Jöckel<sup>3</sup>, and R. Müller<sup>1</sup>

<sup>1</sup>Institute of Energy and Climate Research (IEK-7), Forschungszentrum Jülich GmbH,  
Jülich, Germany

<sup>2</sup>Jülich Supercomputing Centre (JSC), Forschungszentrum Jülich GmbH, Jülich, Germany

<sup>3</sup>Deutsches Zentrum für Luft- und Raumfahrt (DLR), Institut für Physik der Atmosphäre,  
Oberpfaffenhofen, Germany

Received: 25 February 2014 – Accepted: 10 March 2014 – Published: 17 March 2014

Correspondence to: C. M. Hoppe (c.hoppe@fz-juelich.de)

Published by Copernicus Publications on behalf of the European Geosciences Union.

Title Page

Abstract

Introduction

Conclusions

References

Tables

Figures



Back

Close

Full Screen / Esc

Printer-friendly Version

Interactive Discussion



## Abstract

Lagrangian transport schemes have proven to be useful tools for modelling stratospheric trace gas transport since they are less diffusive than classical Eulerian schemes and therefore especially well suited for maintaining steep tracer gradients.

5 Here, we present the implementation of the full-Lagrangian transport core of the Chemical Lagrangian Model of the Stratosphere (CLaMS) into the ECHAM/MESSy Atmospheric Chemistry model (EMAC). We performed a ten-year time-slice simulation to evaluate the coupled model system EMAC/CLaMS. Simulated zonal mean age of air distributions are compared to age of air derived from airborne measurements, showing  
10 a good overall representation of the stratospheric circulation. Results from the new Lagrangian transport scheme are compared to tracer distributions calculated with the standard flux-form semi-Lagrangian (FFSL) transport scheme in EMAC. The differences in the resulting tracer distributions are most pronounced in the regions of strong transport barriers. The polar vortices are presented as an example and simulated trace gas distributions are compared to satellite measurements. The analysis of CFC-11,  
15  $N_2O$ ,  $CH_4$ , and age of air in the polar vortex regions shows that the CLaMS Lagrangian transport scheme produces a stronger, more realistic transport barrier at the edge of the polar vortex than the FFSL transport scheme of EMAC. Differences in simulated age of air range up to one year in the Arctic polar vortex in late winter/early spring. The  
20 new coupled model system EMAC/CLaMS thus constitutes a suitable tool for future model studies of stratospheric tracer transport.

## 1 Introduction

Chemistry climate models (CCMs) that allow atmospheric dynamics, transport, and chemistry to be described from the surface to the stratosphere and above are key  
25 tools for projections of the future development of the stratosphere and in particular of the stratospheric ozone layer (e.g., Eyring et al., 2005; WMO, 2011). Such models

GMDD

7, 1759–1790, 2014

## Implementation of the CLaMS Lagrangian Transport core into EMAC

C. M. Hoppe et al.

Title Page

Abstract

Introduction

Conclusions

References

Tables

Figures

⏪

⏩

◀

▶

Back

Close

Full Screen / Esc

Printer-friendly Version

Interactive Discussion



## Implementation of the CLaMS Lagrangian Transport core into EMAC

C. M. Hoppe et al.

[Title Page](#)

[Abstract](#)

[Introduction](#)

[Conclusions](#)

[References](#)

[Tables](#)

[Figures](#)

[⏪](#)

[⏩](#)

[◀](#)

[▶](#)

[Back](#)

[Close](#)

[Full Screen / Esc](#)

[Printer-friendly Version](#)

[Interactive Discussion](#)



to the standard flux-form semi-Lagrangian (FFSL) transport scheme in EMAC (Lin and Rood, 1996): first, CLaMS provides a full-Lagrangian transport scheme, which has the advantage of being non-diffusive, as described above. The second difference is the representation of vertical velocities. As most CCMs, EMAC employs a pressure-based grid structure. The vertical velocities for tracer transport in EMAC are calculated by the transport scheme as a residual from the horizontal flux divergence using the continuity equation (Lin, 2004). In contrast, CLaMS vertical coordinates in the stratosphere are defined on levels of constant potential temperature. Vertical velocities are derived from diabatic heating rates. The nearly adiabatic nature of atmospheric large-scale motion, with the flow mainly being along isentropic surfaces, seems to favour use of the isentropic coordinate system (Mahowald et al., 2002). For example, planetary waves propagate approximately on surfaces of constant potential temperature, while the pressure may fluctuate considerably during wave propagation. Cross-isentropic motion is determined by diabatic heating rates due to radiation, latent heat, and other diabatic processes like turbulent mixing (Andrews et al., 1987).

Another Lagrangian transport model (ATTILA, Reithmeier and Sausen, 2002) has previously been coupled to the ECHAM climate model. Stenke et al. (2008) show that, compared to the ECHAM model using a semi-Lagrangian transport scheme, the wet bias in stratospheric water vapour could be significantly reduced by using the Lagrangian transport scheme ATTILA. In Stenke et al. (2009), this coupled model was expanded to a chemistry transport model. The simulated  $\text{Cl}_y$  distribution could be improved with this coupled model. Although ATTILA and CLaMS are both Lagrangian transport schemes, they differ in many respects, e.g. in the air parcel definition and the mixing algorithm.

The purpose of this study is to introduce the new coupled model system EMAC/CLaMS and to evaluate it. We investigate the impact of the Lagrangian transport on trace gas distributions and compare the results to those calculated with the standard flux-form semi-Lagrangian transport scheme in EMAC. This article is structured as follows: in the next section, the chemistry transport model CLaMS and the chemistry

climate model EMAC are introduced. In particular, the coupling strategy is explained here. In Sect. 3, simulation results for age of air and long-lived trace species from the coupled model system are presented and compared to air borne measurements and satellite climatologies. Section 4 gives the conclusions.

## 2 Model description

### 2.1 The Chemical Lagrangian Model of the Stratosphere (CLaMS)

The Chemical Lagrangian Model of the Stratosphere (CLaMS), a modular chemistry transport model (CTM), is shortly introduced in this section. The model is described in more detail by McKenna et al. (2002a, b), and Konopka et al. (2004). CLaMS comprises three main modules for Lagrangian advection, mixing, and stratospheric chemistry, as well as several other modules for the simulation of various physical and chemical processes in the atmosphere. Due to its full-Lagrangian transport scheme, CLaMS is especially well suited for maintaining atmospheric transport barriers, in particular at the edges of the tropical pipe and the polar vortex (e.g., Steinhorst et al., 2005; Günther et al., 2008; Konopka et al., 2010; Ploeger et al., 2013).

#### 2.1.1 Trajectory calculation

The CLaMS trajectory module (TRAJ) performs the full-Lagrangian, non-diffusive, three-dimensional advection of an ensemble of air parcels (Sutton et al., 1994). The numerical integration is based on a 4th-order Runge–Kutta scheme.

Required input fields are horizontal and vertical winds, e.g. from ERA-Interim reanalysis products (Dee et al., 2011). The representation of the vertical winds depends on the choice of the vertical coordinate system. It is possible to use different vertical coordinates in CLaMS, e.g. potential temperature  $\theta$  in which case vertical winds would be determined as  $\dot{\theta} = Q$ , with  $Q$  the diabatic heating rate. In this study, we use the hybrid  $\sigma$ – $\theta$  coordinate  $\zeta$ , with  $\dot{\zeta}$  as vertical velocity, as proposed by Mahowald et al. (2002).

## Implementation of the CLaMS Lagrangian Transport core into EMAC

C. M. Hoppe et al.

Title Page

Abstract

Introduction

Conclusions

References

Tables

Figures

⏪

⏩

◀

▶

Back

Close

Full Screen / Esc

Printer-friendly Version

Interactive Discussion



The  $\zeta$ -coordinate combines the terrain-following  $\sigma$ -coordinate ( $\sigma = \frac{p}{p_s}$  where  $p_s$  is surface pressure) for the troposphere and the  $\theta$ -coordinate for the radiation-dominated stratosphere.  $\zeta$  is defined as follows:

$$\zeta = \theta \cdot f(\sigma) \quad (1)$$

5 with

$$f(\sigma) = \begin{cases} \sin\left(\frac{\pi}{2} \frac{1-\sigma}{1-\sigma_r}\right) & \sigma > \sigma_r \\ 1 & \sigma \leq \sigma_r \end{cases} \quad (2)$$

The implementation of  $\zeta$  as vertical coordinate in CLaMS is described in detail in Konopka et al. (2007, 2012). In the present study, we use  $\sigma_r = \frac{p_r}{p_s}$  which means that above the reference height  $p_r$  (300 hPa in this study)  $\zeta$  is equal to the potential temperature  $\theta$ .

### 2.1.2 Mixing

CLaMS comprises a mixing module (MIX), so that the air parcels are not completely isolated, but some exchange takes place in situations where strong flow deformation is present in the atmosphere. This constitutes the irreversible part of the CLaMS transport. The mixing of the air parcels in the CLaMS module MIX is controlled by the horizontal strain and vertical shear of the wind field (McKenna et al., 2002a; Konopka et al., 2007). The mixing routine usually is called every 24 h after the trajectory transport. One mixing event contains the following steps: first, discrete vertical layers are defined according to an entropy criterion such that each of those layers contains approximately the same number of air parcels (for details see Konopka et al., 2007, 2012). Second, the following procedure is done separately for each layer: nearest neighbours of each air parcel are identified using Delaunay triangulation on a horizontal projection of the vertical layer. If the distance between two neighbouring air parcels exceeds a critical

Implementation of  
the CLaMS  
Lagrangian Transport  
core into EMAC

C. M. Hoppe et al.

Title Page

Abstract

Introduction

Conclusions

References

Tables

Figures

⏪

⏩

◀

▶

Back

Close

Full Screen / Esc

Printer-friendly Version

Interactive Discussion



distance  $r_+^c$  after timestep  $\Delta t$ , as defined in Eq. (3), a new air parcel is inserted in the middle. In cases where two air parcels are closer than a critical distance  $r_-^c$ , they are merged such that they form one new air parcel. In other cases, no mixing occurs. The critical radii  $r_{\pm}^c$  are defined as follows (McKenna et al., 2002a):

$$r_{\pm}^c = r_0 \exp(\pm \lambda_c \Delta t) \quad (3)$$

In Eq. (3),  $r_0$  is the mean horizontal distance of air parcels in the layer. The critical Lyapunov exponent  $\lambda_c$ , a measure for the deformation in the flow, determines the critical radii  $r_{\pm}^c$  and thus the mixing strength in the model. The impact of the uncertainty in the mixing strength is investigated in Konopka et al. (2004) and Riese et al. (2012) through varying the parameter  $\lambda_c$ . The pure Lagrangian trajectory advection by TRAJ (Sect. 2.1.1) is numerically non-diffusive. The mixing adds some diffusion to the CLaMS Lagrangian transport (i.e. advection and mixing). The advantage of the CLaMS mixing procedure is that it is built in a physically-based manner, i.e. mixing occurs in regions of strong flow deformation and thus where it is expected in reality.

### 2.1.3 Chemistry

The original CLaMS version contains a detailed stratospheric chemistry scheme (CHEM, McKenna et al., 2002b) involving around 150 species. The numerical solver is based on the ASAD code (Carver et al., 1997). For coupling to a climate model a simplified version of CHEM was used which is more suitable for long-term simulations. The simplified scheme is called every 24 h and uses daily-mean photolysis rates. It allows the stratospheric loss of long-lived tracers ( $\text{CCl}_3\text{F}$  (CFC-11),  $\text{CCl}_2\text{F}_2$  (CFC-12),  $\text{N}_2\text{O}$ , and  $\text{CH}_4$ ) to be reproduced. It further describes the water vapour production by methane-oxidation in the stratosphere. The simplified chemistry scheme is described in more detail in Pommrich et al. (2014).

## Implementation of the CLaMS Lagrangian Transport core into EMAC

C. M. Hoppe et al.

Title Page

Abstract

Introduction

Conclusions

References

Tables

Figures

⏪

⏩

◀

▶

Back

Close

Full Screen / Esc

Printer-friendly Version

Interactive Discussion



## 2.2 The chemistry climate model EMAC

The ECHAM/MESSy Atmospheric Chemistry model (EMAC) is a chemistry climate model (CCM) that comprises the climate model ECHAM5 (Röckner et al., 2006) and the interface structure Modular Earth Submodel System (MESSy, Jöckel et al., 2010). MESSy provides a coupling interface structure to develop Earth system models with the flexibility to vary between many geophysical processes that are included as submodels. MESSy includes various submodels, i.e. for tropospheric and middle atmosphere processes, ocean modules, land surface interaction, and anthropogenic emissions. The first version of MESSy (Jöckel et al., 2006) was developed only for coupling submodels to ECHAM5, whereas the second version (Jöckel et al., 2010) is also suitable for other basemodels, e.g. regional weather forecast models. For the current study, the MESSy version 2.40.1 was used.

MESSy includes a special submodel for dealing with atmospheric tracers. This submodel TRACER is described by Jöckel et al. (2008). It provides the interface structure to couple different external chemistry transport modules to the basemodel. In the standard EMAC setup, tracers are transported using the flux-form semi-Lagrangian transport scheme of Lin and Rood (1996). In the implementation of the scheme by Lin and Rood (1996) here, the horizontal transport is performed using the piece-wise parabolic method (PPM, Carpenter et al., 1990). The vertical transport is based on the use of the Huynh/Van Leer/Lin full monotonicity constraint (see Appendix B in Lin, 2004). The vertical velocities are calculated internally in the transport scheme from the horizontal flux divergence using the continuity equation.

## 2.3 The coupled model system EMAC/CLaMS

### 2.3.1 The MESSy interface structure

This section provides a short description of the architecture of the MESSy interface. A more detailed description is given in Jöckel et al. (2005, 2010). The code of MESSy

GMDD

7, 1759–1790, 2014

## Implementation of the CLaMS Lagrangian Transport core into EMAC

C. M. Hoppe et al.

Title Page

Abstract

Introduction

Conclusions

References

Tables

Figures

⏪

⏩

◀

▶

Back

Close

Full Screen / Esc

Printer-friendly Version

Interactive Discussion







## Implementation of the CLaMS Lagrangian Transport core into EMAC

C. M. Hoppe et al.

Title Page

Abstract

Introduction

Conclusions

References

Tables

Figures



Back

Close

Full Screen / Esc

Printer-friendly Version

Interactive Discussion

The first option is to run the coupled version with the ECHAM5 basemodel (left box in Fig. 1). In this case, horizontal winds driving the isentropic CLaMS trajectories are calculated by ECHAM5. Likewise, the vertical, cross-isentropic velocities are deduced from diabatic heating rates from the climate model. The heating rates result from several process parameterisations, like radiation, convection and clouds, gravity wave drag, and vertical diffusion. The dominant terms in the heating rate budget are radiation and (where applicable) latent heat release from cloud formation. The MESSY interface also provides the possibility for two-way-coupling between processes. Thus, trace gas distributions derived by CLaMS could serve as input for the EMAC radiation calculation.

The second possible basemodel is the newly developed CLaMS basemodel (right box in Fig. 1). Here, the meteorological input fields are read from external data files, e.g., from ERA-Interim reanalysis data. Running the CLaMS basemodel delivers the same result as the original CLaMS model that is not included in the MESSY interface. The single modules of the original version were represented as individual Fortran90 programs, which were started by a shell script. Technically, the new CLaMS basemodel replaces the shell script that was used to run the original version of CLaMS. In the original version, data exchange between the modules was achieved through NetCDF files. In contrast, in the MESSY version, the communication between the different submodels is carried out via the interface structure in the BMIL, therefore no external data files are required.

### 3 Results

Here we present results of a ten-year time-slice simulation with the coupled EMAC/CLaMS model. In this simulation, two transport schemes were applied with two similar tracer sets. The two transport schemes were run in parallel in the same climate simulation, thus the underlying dynamics were identical. Tracer distributions calculated with the CLaMS full-Lagrangian transport scheme are compared to tracer

fields derived from the flux-form semi-Lagrangian transport in EMAC. The transport with the full-Lagrangian transport scheme will be referred to as “EMAC/CLaMS” in the following, and the one using the flux-form semi-Lagrangian transport will be denoted “EMAC-FFSL”.

5 A detailed analysis of the zonal mean climatologies of age of air and trace gases from simulation with the coupled model system EMAC/CLaMS will be published in a separate article which will include a comparison to satellite climatologies and a profound discussion on the influence of the different transport schemes and the different vertical velocities on the simulated tracer distributions. In the present work, we focus on the polar vortex regions which constitute an example for a particularly pronounced transport barrier in the stratosphere.

### 3.1 Simulation setup

For this study, we performed a ten-year time-slice simulation with chemical boundary conditions representing the year 2005.

15 The underlying climate simulation was a free running ECHAM5 simulation without nudging to observations. The sea surface temperature and sea ice concentration boundary conditions are taken from the Atmospheric Model Intercomparison Project (AMIP II, Hurrell et al., 2008) climatology. The horizontal resolution is T42, which corresponds to a quadratic Gaussian grid with gridboxes of approximately  $2.8^\circ$  extent in latitude and longitude ( $\approx 300$  km at the equator). The grid has 90 vertical levels from the surface up to 0.01 hPa ( $\approx 80$  km).

25 Two sets of chemical tracers are set up, one for each of the two transport schemes EMAC/CLaMS and EMAC-FFSL. The tracers include the species for the simplified CLaMS chemistry scheme, as described in Pommrich et al. (2014). Here, we focus on the analysis of the long-lived tracers CFC-11,  $N_2O$ , and  $CH_4$ . The initial and boundary values for the tracer fields are taken from a climatological simulation with the uncoupled CLaMS model (Pommrich et al., 2014) that is driven by ERA-Interim meteorological re-analysis data (Dee et al., 2011).

---

**Implementation of  
the CLaMS  
Lagrangian Transport  
core into EMAC**

C. M. Hoppe et al.

---

Title Page

Abstract

Introduction

Conclusions

References

Tables

Figures

⏪

⏩

◀

▶

Back

Close

Full Screen / Esc

Printer-friendly Version

Interactive Discussion



## Implementation of the CLaMS Lagrangian Transport core into EMAC

C. M. Hoppe et al.

Title Page

Abstract

Introduction

Conclusions

References

Tables

Figures

⏪

⏩

◀

▶

Back

Close

Full Screen / Esc

Printer-friendly Version

Interactive Discussion

An age of air tracer is also added to each of the tracer sets (Pommrich et al., 2011), implemented as a passive tracer with a linear increasing lower boundary condition (“clock-tracer”, Hall and Plumb, 1994). The mean age at a certain position in the atmosphere is derived from the difference between the local tracer value and the current value at the surface.

For the CLaMS transport scheme, about one million air parcels are set up from the surface up to the 2500 K potential temperature level ( $\approx 60$  km). The number of air parcels is comparable to the number of gridpoints in the EMAC grid. However, the distribution of the data points is different for the two transport representations, as CLaMS air parcels are initialized in vertical layers that all have the same amount of entropy (Konopka et al., 2007, 2012). Every 24 h, the CLaMS mixing procedure is applied on the ensemble of CLaMS air parcels and the simplified chemistry is calculated. The mixing parameters are set to  $\lambda_c = 1.2 \text{ day}^{-1}$  and  $r_0 = 300$  km. The boundaries are updated after the mixing procedure.

A similar tracer set is defined in the EMAC gridpoint space for the EMAC-FFSL transport. These tracers are transported by the flux-form semi-Lagrangian transport scheme. The same chemistry algorithm (CLaMS simplified chemistry) as for EMAC/CLaMS is applied on the EMAC-FFSL tracer set. As already mentioned, the same boundary and initial values are used for both tracer sets.

Climatologies have been produced for the EMAC/CLaMS and EMAC-FFSL simulation results. Data are interpolated to the same regular grid structure for the daily output, and monthly mean values are calculated for each month. Then, the respective monthly means for all 10 years of simulation are used for the climatology. Climatologies averaged over the whole simulation period of ten years have been compared to climatologies derived only from the last five years of output to test if there are large influences of initialisation. Only small differences were found (see Fig. 5). Therefore, only the 10-year-climatologies were used for the following analysis.

## 3.2 Age of air

First we present age of air distributions for the verification of the new coupled model system. The age of air diagnostic is suitable for this purpose since mean age is a passive tracer that directly displays transport characteristics. Eluszkiewicz et al. (2000) show that age of air is very sensitive to the choice of the transport scheme.

We show zonal mean age of air at 50 hPa for the EMAC-FFSL and EMAC/CLaMS climatologies in comparison to mean age of air derived from measurements in Fig. 2. The observed mean age of air values are derived from SF<sub>6</sub> and CO<sub>2</sub> airborne measurements from various campaigns with the NASA ER-2 aircraft (Elkins et al., 1996; Boering et al., 1996; Waugh and Hall, 2002). Figure 2 shows that both simulations produce a similar and reasonable age of air distribution. In EMAC-FFSL as well as in EMAC/CLaMS, the age of air pattern is consistent with the general features of the stratospheric circulation. There is upwelling of young air masses in the tropics, and downwelling of old air masses in the polar regions. Both simulations exhibit slightly older air in the Southern Hemisphere compared to the Northern Hemisphere. Note that age in EMAC-FFSL and EMAC/CLaMS is defined in reference to the surface, while it is defined in reference to the tropopause in the age of air from measurements. This adds an additional young bias of a few months to the simulations. Overall the simulated age of air is about one year younger in higher latitudes in comparison to the observations. The younger simulated mean age in comparison to observations is a typical feature seen in climate models which can be much more pronounced than in the example shown here (Waugh and Hall, 2002; SPARC, 2010). Age of air derived from SF<sub>6</sub> at high latitudes is typically high biased because the algorithms do not account for the stratospheric loss of SF<sub>6</sub> (Waugh and Hall, 2002). Overall, both transport representations allow the expected age of air distribution to be reproduced. In the Northern hemispheric high latitudes, there is the largest difference in simulated age of air. Here, EMAC/CLaMS shows older air masses than EMAC-FFSL and is thus closer to the observations.

## Implementation of the CLaMS Lagrangian Transport core into EMAC

C. M. Hoppe et al.

[Title Page](#)

[Abstract](#)

[Introduction](#)

[Conclusions](#)

[References](#)

[Tables](#)

[Figures](#)

[⏪](#)

[⏩](#)

[◀](#)

[▶](#)

[Back](#)

[Close](#)

[Full Screen / Esc](#)

[Printer-friendly Version](#)

[Interactive Discussion](#)



Zonal mean trace gas climatologies from EMAC/CLaMS were also used to derive relative lifetimes from CFC-11 and CFC-12 simulations (Hoffmann et al., 2014). The results compare very well with lifetimes derived independently from various satellite climatologies. The good agreement between the model deduced and observationally deduced lifetimes provides further confidence in the representation of transport and chemistry of long-lived tracers in the EMAC/CLaMS model system.

### 3.3 Representation of polar vortices

In this section we compare the representation of the Arctic and Antarctic polar vortices in the two transport schemes. The edge of the polar vortex forms a strong transport barrier in the stratosphere (e.g., Steinhorst et al., 2005; Günther et al., 2008). Inside the vortex, diabatic descent of airmasses from high altitudes leads to low concentrations of trace gases which are of tropospheric origin and have a stratospheric sink (e.g., Müller et al., 1996). These isolated conditions are crucial for polar ozone depletion. However, the simulation of a highly isolated vortex is a difficult task for climate models with limited spatial resolution. SPARC (2010) show that many CCMs do not form a sufficiently isolated Antarctic polar vortex. The problem of the isolation of the polar vortex is often even more pronounced for Arctic conditions (SPARC, 2010).

When comparing the model performance in the case of vortex isolation against observations, it is important to assess the quality of the simulated horizontal wind. Therefore, before validating the transport schemes, we first compare the mean zonal wind in EMAC with the mean zonal wind in ERA-Interim in Fig. 3. We find that ERA-Interim zonal winds are slightly stronger in the winter hemisphere polar jet regions. Thus the polar vortex is weaker in EMAC than in ERA-Interim and trace gas gradients are also expected to be moderately weaker in the simulation results than in satellite climatologies, independently of the employed the transport scheme.

## Implementation of the CLaMS Lagrangian Transport core into EMAC

C. M. Hoppe et al.

Title Page

Abstract

Introduction

Conclusions

References

Tables

Figures



Back

Close

Full Screen / Esc

Printer-friendly Version

Interactive Discussion



### 3.3.1 Antarctic polar vortex

Figure 4 shows horizontal age of air distributions of EMAC-FFSL and EMAC/CLaMS at 450 K for August and October in the Southern Hemisphere. In August (top panels), there are older air masses inside the vortex in EMAC/CLaMS than in EMAC-FFSL. Inside the vortex the air is up to 0.5 years younger in EMAC-FFSL. On the contrary, EMAC/CLaMS shows younger air outside the vortex. In October (bottom panels), the age of air differences inside the vortex have increased to values of 0.8 years. The differences are larger than in October because the processes that dominate the vortex evolution are different. During August, diabatic downwelling is the most important process in the vortex. It is found that in August the downwelling of the diabatic vertical velocity in EMAC/CLaMS is stronger in the polar vortex region than the downwelling of the kinematic vertical velocity in EMAC-FFSL. This leads to the small differences in age of air in August that are displayed in the top right panel of Fig. 4. However, in October downwelling decreases in strength and becomes less important for the age of air distribution so that the impact of horizontal transport through the vortex edge and mixing increases (Gerber, 2012). During the period when the transport barrier controls horizontal mixing, the differences in age of air are larger than during the earlier period when downwelling is the most important process.

The simulated pattern of long-lived tracers with a purely stratospheric loss and a purely tropospheric source are dominated by the age of air distribution in the model but allow a comparison against measurements. For the Antarctic polar vortex region, we also compared vertical profiles of simulated CFC-11 and CH<sub>4</sub> with profiles from measurement climatologies of the Atmospheric Chemistry Experiment-Fourier Transform Spectrometer (ACE-FTS). The ACE-FTS climatology (Jones et al., 2012) contains monthly zonal mean values for 14 species. It does not include error budget estimates, but comparisons with measurements from other instruments show differences in the order of 10 % for CFC-11 and CH<sub>4</sub> (Jones et al., 2012). The climatology includes ACE-FTS measurements from February 2004 to February 2009.

## Implementation of the CLaMS Lagrangian Transport core into EMAC

C. M. Hoppe et al.

Title Page

Abstract

Introduction

Conclusions

References

Tables

Figures



Back

Close

Full Screen / Esc

Printer-friendly Version

Interactive Discussion









differences between the two transport schemes: with the CLaMS full-Lagrangian transport, it is possible to produce trace gas distributions that indicate a stronger polar vortex than in EMAC-FFSL, but still weaker than in the satellite climatology, which seems to be linked to the weaker zonal winds in EMAC (see Fig. 3).

5 The polar vortex edge is characterized by strong horizontal gradients of trace gases. For this study, N<sub>2</sub>O gradients from the simulation climatologies are compared to gradients in monthly climatologies from measurements of the Microwave Limb Sounder (MLS) onboard the NASA Aura satellite from 2005 to 2012. These satellite climatologies have been created from MLS version 3.3 data (Livesey et al., 2011). The MLS data have been interpolated on vertical pressure levels for each profile, binned horizontally (lat × lon) and averaged for each month. MLS scans about 3500 profiles per day, thereby providing a high-frequency sampling of the global atmosphere and good statistics for creating global monthly zonal mean climatologies. For the comparison, the simulation results have been vertically smoothed in a similar way as the averaging kernel of the MLS retrievals smoothes the atmospheric profiles. Ploeger et al. (2013) show that this procedure is necessary to obtain comparable results, especially in the lower stratospheric polar regions. Figure 6 shows the absolute value of the horizontal N<sub>2</sub>O gradients on the isentropic surface at 450 K for September. The left panel displays the EMAC-FFSL results, the panel in the middle the gradient in EMAC/CLaMS, and the right panel the MLS climatological values. It is clearly visible that the N<sub>2</sub>O gradient is too weak in the EMAC-FFSL transport, with maximum values around  $4.5 \times 10^{-5} \text{ ppb m}^{-1}$ . The MLS data exhibit maximum values of  $7.0 \times 10^{-5} \text{ ppb m}^{-1}$ . The EMAC/CLaMS N<sub>2</sub>O gradient, calculated with the full Lagrangian transport scheme, shows maximum values of  $6.0 \times 10^{-5} \text{ ppb m}^{-1}$ . These values are still smaller than those found in the satellite data set, but they show a clear improvement in comparison to the flux-form semi-Lagrangian transport scheme.

## Implementation of the CLaMS Lagrangian Transport core into EMAC

C. M. Hoppe et al.

Title Page

Abstract

Introduction

Conclusions

References

Tables

Figures



Back

Close

Full Screen / Esc

Printer-friendly Version

Interactive Discussion



### 3.3.2 Arctic polar vortex

This section presents age of air distributions in the Arctic polar vortex region at the end of winter. As the Arctic polar vortex shows substantial interannual variability, more than the Antarctic polar vortex, we do not analyse results from the 10 year climatology here. Instead, monthly mean values from the second year of the time-slice simulation are shown as an example.

Figure 7 shows age of air distributions in the Northern Hemisphere at the 450 K potential temperature level. In February (top panels), the EMAC/CLaMS simulation results in a stronger polar vortex than the EMAC-FFSL transport. The air inside the vortex is older and the gradient at the vortex edge is stronger when using the full-Lagrangian transport scheme. The absolute differences for age of air in February are displayed in the top right panel. This plot shows that the maximum difference in mean age of air is located inside the vortex and reaches values up to one year.

In March the vortex has split into two parts (see bottom panels in Fig. 7). This structure is visible in both transport schemes, but it is more pronounced in EMAC/CLaMS. In the EMAC-FFSL representation, stronger mixing of air masses from inside and outside the vortex has taken place. Again, the differences in age of air are largest (up to one year) in the regions of the polar vortex.

The differences in age of air between EMAC-FFSL and EMAC/CLaMS are larger in the Northern hemispheric vortex than in the Southern hemispheric vortex. This can be explained by the fact that planetary wave activity is stronger in the Arctic than in the Antarctic. Thus, isentropic Rossby waves disturb the zonal symmetry of the Arctic polar vortex much stronger than of the almost circumpolar vortex in the Antarctic stratosphere. In such a case, a Lagrangian transport scheme has an advantage over the FFSL approach by minimizing the numerical mixing in the vicinity of a disturbed transport barrier like the vortex edge. The differences between EMAC-FFSL and EMAC/CLaMS due to mixing seem to be larger than the differences due to vertical velocities. This is consistent with the analysis for the Southern Hemisphere, where the

## Implementation of the CLaMS Lagrangian Transport core into EMAC

C. M. Hoppe et al.

Title Page

Abstract

Introduction

Conclusions

References

Tables

Figures



Back

Close

Full Screen / Esc

Printer-friendly Version

Interactive Discussion



differences in age of air are most pronounced in October, when the impact of downwelling decreases and the impact of in-mixing into the vortex increases.

## 4 Conclusions

The full-Lagrangian CTM CLaMS has successfully been coupled to the chemistry climate model EMAC. First results show that the new model system with coupled transport is able to simulate reasonable distributions of age of air and long-lived trace species such as CFC-11, CH<sub>4</sub>, and N<sub>2</sub>O. Differences to the flux-form semi-Lagrangian transport scheme are most pronounced in the regions of strong transport barriers. This is demonstrated for Arctic and Antarctic polar vortices. The results show that when employing the Lagrangian transport scheme a stronger, more realistic transport barrier at the vortex edge is simulated. The newly developed coupled model presented here therefore constitutes a suitable tool for future model studies, especially for regions in the upper troposphere and lower stratosphere where transport barriers are of crucial importance.

## Code availability

The Modular Earth Submodel System (MESSy) is continuously further developed and applied by a consortium of institutions. The usage of MESSy and access to the source code is licenced to all affiliates of institutions which are members of the MESSy Consortium. Institutions can be a member of the MESSy Consortium by signing the MESSy Memorandum of Understanding. More information can be found on the MESSy Consortium Website (<http://www.messy-interface.org>). The new CLaMS submodels are not part of the current MESSy version 2.50, but they will be included in future versions.

*Acknowledgements.* We thank N. Thomas for programming support. We also thank ECMWF for providing the reanalysis data. The ACE-FTS climatology was provided by the University

GMDD

7, 1759–1790, 2014

## Implementation of the CLaMS Lagrangian Transport core into EMAC

C. M. Hoppe et al.

Title Page

Abstract

Introduction

Conclusions

References

Tables

Figures

⏪

⏩

◀

▶

Back

Close

Full Screen / Esc

Printer-friendly Version

Interactive Discussion



of Waterloo, Canada. The MLS data were obtained from the NASA Goddard Earth Sciences Data and Information Center. We also acknowledge the Jülich Supercomputing Center (JSC) at Forschungszentrum Jülich for providing computing time and support.

5 The service charges for this open access publication have been covered by a Research Centre of the Helmholtz Association.

## References

- 10 Andrews, D. G., Holton, J. R., and Leovy, C. B.: Middle Atmosphere Dynamics, Academic Press, 1987. 1762
- Boering, K., Wofsy, S., Daube, B., Schneider, H., Loewenstein, M., and Podolske, J.: Stratospheric mean ages and transport rates from observations of carbon dioxide and nitrous oxide, *Science*, 274, 1340–1343, 1996. 1771, 1785
- 15 Carpenter, R. L., Droegemeier, K. K., Woodward, P. R., and Hane, C. E.: Application of the Piecewise Parabolic Method (PPM) to meteorological modeling, *Mon. Weather Rev.*, 118, 586–612, 1990. 1766
- Carver, G. D., Brown, P. D., and Wild, O.: The ASAD atmospheric chemistry integration package and chemical reaction database, *Comput. Phys. Commun.*, 105, 197–215, 1997. 1765
- 20 Dee, D. P., Uppala, S. M., Simmons, A. J., Berrisford, P., Poli, P., Kobayashi, S., Andrae, U., Balmaseda, M. A., Balsamo, G., Bauer, P., Bechtold, P., Beljaars, A. C. M., van de Berg, L., Bidlot, J., Bormann, N., Delsol, C., Dragani, R., Fuentes, M., Geer, A. J., Haimberger, L., Healy, S. B., Hersbach, H., Hólm, E. V., Isaksen, I., Kållberg, P., Köhler, M., Matricardi, M., McNally, A. P., Monge-Sanz, B. M., Morcrette, J. J., Park, B. K., Peubey, C., de Rosnay, P., Tavolato, C., Thépaut, J. N., and Vitart, F.: The ERA-Interim reanalysis: configuration and performance of the data assimilation system, *Q. J. Roy. Meteor. Soc.*, 137, 553–597, 2011. 1763, 1769
- 25 Elkins, J., Fahey, D., Gilligan, J., Dutton, G., Baring, T., Volk, C., Dunn, R., Myers, R., Montzka, S., Wamsley, P., Hayden, A., Butler, J., Thompson, T., Swanson, T., Dlugokencky, E., Novelli, P., Hurst, D., Lobert, J., Ciciora, S., McLaughlin, R., Thompson, T., Winkler, R., Fraser, P., Steele, L., and Lucarelli, M.: Airborne gas chromatograph for in situ mea-
- 30

## Implementation of the CLaMS Lagrangian Transport core into EMAC

C. M. Hoppe et al.

Title Page

Abstract

Introduction

Conclusions

References

Tables

Figures

⏪

⏩

◀

▶

Back

Close

Full Screen / Esc

Printer-friendly Version

Interactive Discussion



## Implementation of the CLaMS Lagrangian Transport core into EMAC

C. M. Hoppe et al.

Title Page

Abstract

Introduction

Conclusions

References

Tables

Figures

⏪

⏩

◀

▶

Back

Close

Full Screen / Esc

Printer-friendly Version

Interactive Discussion

surements of long-lived species in the upper troposphere and lower stratosphere, *Geophys. Res. Lett.*, 23, 347–350, 1996. 1771, 1785

Eluszkiewicz, J., Hemler, R., Mahlman, J., Bruhwiler, L., and Takacs, L.: Sensitivity of age-of-air calculations to the choice of advection scheme, *J. Atmos. Sci.*, 57, 3185–3201, 2000. 1771

5 Eyring, V., Harris, N. R. P., Rex, M., Shepherd, T. G., Fahey, D. W., Amanatidis, G. T., Austin, J., Chipperfield, M. P., Dameris, M., Forster, P., Graf, H. F., Nagashima, T., Newman, P. A., Pawson, S., Prather, M. J., Pyle, J. A., Salawitch, R. J., Santer, B. D., and Waugh, D. W.: A strategy for process-oriented validation of coupled chemistry–climate models, *B. Am. Meteorol. Soc.*, 86, 1117–1133, 2005. 1760

10 Gerber, E. P.: Stratospheric versus tropospheric control of the strength and structure of the Brewer–Dobson Circulation, *J. Atmos. Sci.*, 69, 2857–2877, 2012. 1773

Günther, G., Müller, R., von Hobe, M., Stroh, F., Konopka, P., and Volk, C. M.: Quantification of transport across the boundary of the lower stratospheric vortex during Arctic winter 2002/2003, *Atmos. Chem. Phys.*, 8, 3655–3670, doi:10.5194/acp-8-3655-2008, 2008. 1763, 1772

15 Hall, T. M. and Plumb, R. A.: Age as a diagnostic of stratospheric transport, *J. Geophys. Res.*, 99, 1059–1070, 1994. 1770

Hoffmann, L., Hoppe, C. M., Meyer, C. I., Müller, R., Gille, J. C., and Spang, R.: Ratio of stratospheric lifetimes of CFC-11 and CFC-12 from satellite observations and a Lagrangian chemistry transport model, *Atmos. Chem. Phys. Discuss.*, in preparation, 2014. 1772

20 Hurrell, J. W., Hack, J. J., Shea, D., Caron, J. M., and Rosinski, J.: A new sea surface temperature and sea ice boundary dataset for the Community Atmosphere Model, *J. Climate*, 21, 5145–5153, 2008. 1769

Jöckel, P., Sander, R., Kerkweg, A., Tost, H., and Lelieveld, J.: Technical Note: The Modular Earth Submodel System (MESSy) – a new approach towards Earth System Modeling, *Atmos. Chem. Phys.*, 5, 433–444, doi:10.5194/acp-5-433-2005, 2005. 1761, 1766

25 Jöckel, P., Tost, H., Pozzer, A., Brühl, C., Buchholz, J., Ganzeveld, L., Hoor, P., Kerkweg, A., Lawrence, M. G., Sander, R., Steil, B., Stiller, G., Tanarhte, M., Taraborrelli, D., van Aardenne, J., and Lelieveld, J.: The atmospheric chemistry general circulation model ECHAM5/MESSy1: consistent simulation of ozone from the surface to the mesosphere, *Atmos. Chem. Phys.*, 6, 5067–5104, doi:10.5194/acp-6-5067-2006, 2006. 1766

30 Jöckel, P., Kerkweg, A., Buchholz-Dietsch, J., Tost, H., Sander, R., and Pozzer, A.: Technical Note: Coupling of chemical processes with the Modular Earth Submodel System (MESSy)

## Implementation of the CLaMS Lagrangian Transport core into EMAC

C. M. Hoppe et al.

Title Page

Abstract

Introduction

Conclusions

References

Tables

Figures

⏪

⏩

◀

▶

Back

Close

Full Screen / Esc

Printer-friendly Version

Interactive Discussion

submodel TRACER, *Atmos. Chem. Phys.*, 8, 1677–1687, doi:10.5194/acp-8-1677-2008, 2008. 1766

Jöckel, P., Kerkweg, A., Pozzer, A., Sander, R., Tost, H., Riede, H., Baumgaertner, A., Gromov, S., and Kern, B.: Development cycle 2 of the Modular Earth Submodel System (MESSy2), *Geosci. Model Dev.*, 3, 717–752, doi:10.5194/gmd-3-717-2010, 2010. 1761, 1766

Jones, A., Walker, K. A., Jin, J. J., Taylor, J. R., Boone, C. D., Bernath, P. F., Brohede, S., Manney, G. L., McLeod, S., Hughes, R., and Daffer, W. H.: Technical Note: A trace gas climatology derived from the Atmospheric Chemistry Experiment Fourier Transform Spectrometer (ACE-FTS) data set, *Atmos. Chem. Phys.*, 12, 5207–5220, doi:10.5194/acp-12-5207-2012, 2012. 1773

Konopka, P., Steinhorst, H., Grooss, J., Günther, G., Müller, R., Elkins, J., Jost, H., Richard, E., Schmidt, U., Toon, G., and McKenna, D.: Mixing and ozone loss in the 1999–2000 Arctic vortex: simulations with the three-dimensional Chemical Lagrangian Model of the Stratosphere (CLaMS), *J. Geophys. Res.*, 27, D02315, doi:10.1029/2003JD003792, 2004. 1761, 1763, 1765

Konopka, P., Günther, G., Müller, R., dos Santos, F. H. S., Schiller, C., Ravegnani, F., Ulanovsky, A., Schlager, H., Volk, C. M., Viciani, S., Pan, L. L., McKenna, D.-S., and Riese, M.: Contribution of mixing to upward transport across the tropical tropopause layer (TTL), *Atmos. Chem. Phys.*, 7, 3285–3308, doi:10.5194/acp-7-3285-2007, 2007. 1764, 1770

Konopka, P., Grooß, J.-U., Günther, G., Ploeger, F., Pommrich, R., Müller, R., and Livesey, N.: Annual cycle of ozone at and above the tropical tropopause: observations versus simulations with the Chemical Lagrangian Model of the Stratosphere (CLaMS), *Atmos. Chem. Phys.*, 10, 121–132, doi:10.5194/acp-10-121-2010, 2010. 1763

Konopka, P., Ploeger, F., and Müller, R.: Entropy- and static stability-based Lagrangian model grids, in: *Geophysical Monograph Series: Lagrangian Modeling of the Atmosphere*, vol. 200, edited by: Lin, J., American Geophysical Union, doi:10.1029/2012GM001253, 99–109, 2012. 1764, 1770

Lin, S.-J.: A “vertically Lagrangian” finite-volume dynamical core for global models, *Weather Rev.*, 132, 2293–2307, 2004. 1762, 1766

Lin, S. and Rood, R.: Multidimensional flux-form semi-Lagrangian transport schemes, *Mon. Weather Rev.*, 124, 2046–2070, 1996. 1762, 1766

## Implementation of the CLaMS Lagrangian Transport core into EMAC

C. M. Hoppe et al.

[Title Page](#)

[Abstract](#)

[Introduction](#)

[Conclusions](#)

[References](#)

[Tables](#)

[Figures](#)

[⏪](#)

[⏩](#)

[◀](#)

[▶](#)

[Back](#)

[Close](#)

[Full Screen / Esc](#)

[Printer-friendly Version](#)

[Interactive Discussion](#)

- Livesey, N., Read, W., Froidevaux, L., Lambert, A., Manney, G., Pumphrey, H., Santee, M., Schwartz, M., Wang, S., Cofeld, R., Cuddy, D., Fuller, R., Jarnot, R., Jiang, J., Knosp, B., Stek, P., Wagner, P., and Wu, D.: Earth Observing System (EOS) Aura Microwave Limb Sounder MLS version 3.3 level 2 data quality and description document, Tech. rep., Jet Propulsion Laboratory, 2011. 1775
- Mahowald, N., Plumb, R., Rasch, P., del Corral, J., Sassi, F., and Heres, W.: Stratospheric transport in a three-dimensional isentropic coordinate model, *J. Geophys. Res.*, 107, ACH3.1–ACH3.14, doi:10.1029/2001JD001313, 2002. 1762, 1763
- McKenna, D. S., Konopka, P., Grooß, J.-U., Günther, G., Müller, R., Spang, R., Offermann, D., and Orsolini, Y.: A new Chemical Lagrangian Model of the Stratosphere (CLaMS) 1. Formulation of advection and mixing, *J. Geophys. Res.*, 107, ACH15.1–ACH15.15, doi:10.1029/2000JD000114, 2002a. 1761, 1763, 1764, 1765
- McKenna, D. S., Grooß, J.-U., Günther, G., Konopka, P., Müller, R., Carver, G., and Sasano, Y.: A new Chemical Lagrangian Model of the Stratosphere (CLaMS) 2. Formulation of chemistry scheme and initialization, *J. Geophys. Res.*, 107, ACH4.1–ACH4.14, doi:10.1029/2000JD000113, 2002b. 1761, 1763, 1765
- Müller, R., Crutzen, P. J., Grooß, J.-U., Brühl, C., Russell III, J. M., and Tuck, A. F.: Chlorine activation and ozone depletion in the Arctic vortex: observations by the Halogen Occultation Experiment on the Upper Atmosphere Research Satellite, *J. Geophys. Res.*, 101, 12531–12554, 1996. 1772
- Ploeger, F., Konopka, P., Müller, R., Fueglistaler, S., Schmidt, T., Manners, J. C., Grooß, J.-U., Günther, G., Forster, P. M., and Riese, M.: Horizontal transport affecting trace gas seasonality in the Tropical Tropopause Layer (TTL), *J. Geophys. Res.*, 117, D09303, doi:10.1029/2011JD017267, 2012. 1761
- Ploeger, F., Günther, G., Konopka, P., Fueglistaler, S., Müller, R., Hoppe, C., Kunz, A., Spang, R., Grooß, J.-U., and Riese, M.: Horizontal water vapor transport in the lower stratosphere from subtropics to high latitudes during boreal summer, *J. Geophys. Res.*, 118, 8111–8127, 2013. 1763, 1775
- Pommrich, R., Müller, R., Grooß, J.-U., Konopka, P., Günther, G., Pumphrey, H.-C., Viciani, S., D’Amato, F., and Riese, M.: Carbon monoxide as a tracer for tropical troposphere to stratosphere transport in the Chemical Lagrangian Model of the Stratosphere (CLaMS), *Geosci. Model Dev. Discuss.*, 4, 1185–1211, doi:10.5194/gmdd-4-1185-2011, 2011. 1770







## Implementation of the CLaMS Lagrangian Transport core into EMAC

C. M. Hoppe et al.

Title Page

Abstract

Introduction

Conclusions

References

Tables

Figures

⏪

⏩

◀

▶

Back

Close

Full Screen / Esc

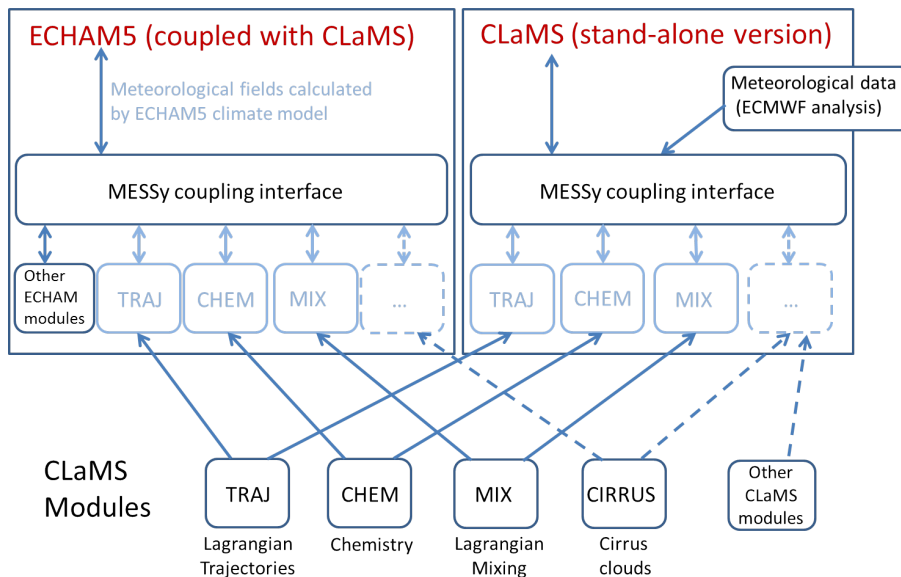
Printer-friendly Version

Interactive Discussion

- Stenke, A., Dameris, M., Grewe, V., and Garny, H.: Implications of Lagrangian transport for simulations with a coupled chemistry-climate model, *Atmos. Chem. Phys.*, 9, 5489–5504, doi:10.5194/acp-9-5489-2009, 2009. 1761, 1762
- 5 Strahan, S. E., Douglass, A. R., Stolarski, R. S., Akiyoshi, H., Bekki, S., Braesicke, P., Butchart, N., Chipperfield, M. P., Cugnet, D., Dhomse, S., Frith, S. M., Gettelman, A., Hardiman, S. C., Kinnison, D. E., Lamarque, J.-F., Mancini, E., Marchand, M., Michou, M., Morgenstern, O., Nakamura, T., Olivie, D., Pawson, S., Pitari, G., Plummer, D. A., Pyle, J. A., Scinocca, J. F., Shepherd, T. G., Shibata, K., Smale, D., Teyssèdre, H., Tian, W., and Yamashita, Y.: Using transport diagnostics to understand chemistry climate model ozone simu-
- 10 lations, *J. Geophys. Res.*, 116, D17302, doi:10.1029/2010JD015360, 2011. 1761
- Sutton, R. T., Maclean, H., Swinbank, R., O'Neill, A., and Taylor, F. W.: High-resolution stratospheric tracer fields estimated from satellite observations using Lagrangian trajectory calculations, *J. Atmos. Sci.*, 51, 2995–3005, 1994. 1763
- 15 Thompson, D. W. J. and Solomon, S.: Interpretation of recent Southern Hemisphere climate change, *Science*, 296, 895–899, 2002. 1761
- Waugh, D. and Hall, T.: Age of stratospheric air: theory, observations, and models, *Rev. Geophys.*, 40, 1.1–1.26, doi:10.1029/2000RG000101, 2002. 1771, 1785
- WMO: Scientific assessment of ozone depletion: 2010, Global Ozone Research and Monitoring Project–Report No. 52, Geneva, Switzerland, 2011. 1760

## Implementation of the CLaMS Lagrangian Transport core into EMAC

C. M. Hoppe et al.

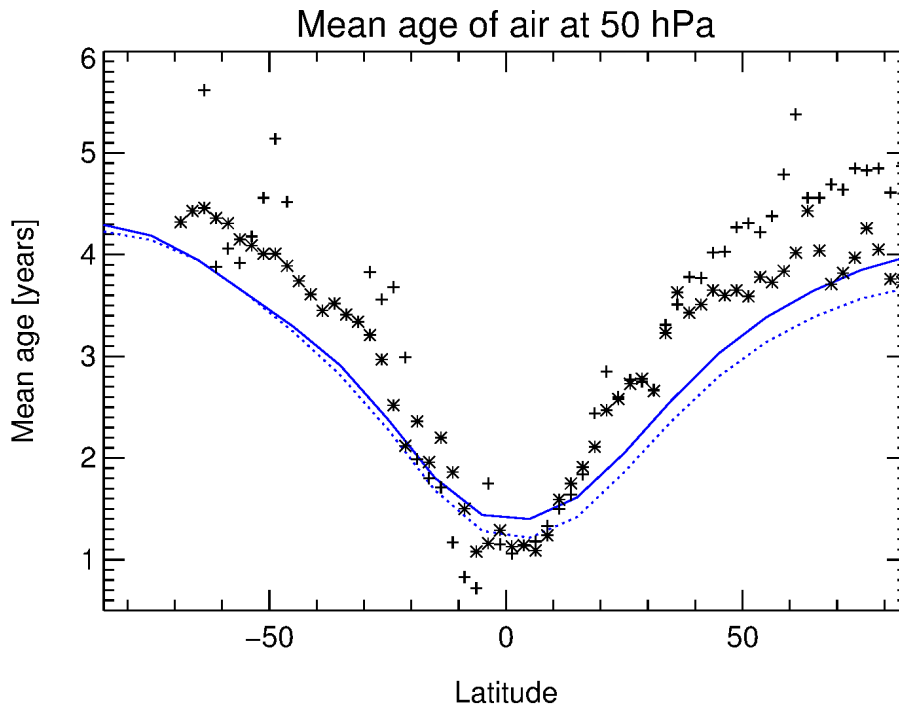


**Fig. 1.** Schematic of the CLaMS modules integrated in the MESSy interface.

Title Page	
Abstract	Introduction
Conclusions	References
Tables	Figures
◀	▶
◀	▶
Back	Close
Full Screen / Esc	
Printer-friendly Version	
Interactive Discussion	

**Implementation of  
the CLaMS  
Lagrangian Transport  
core into EMAC**

C. M. Hoppe et al.

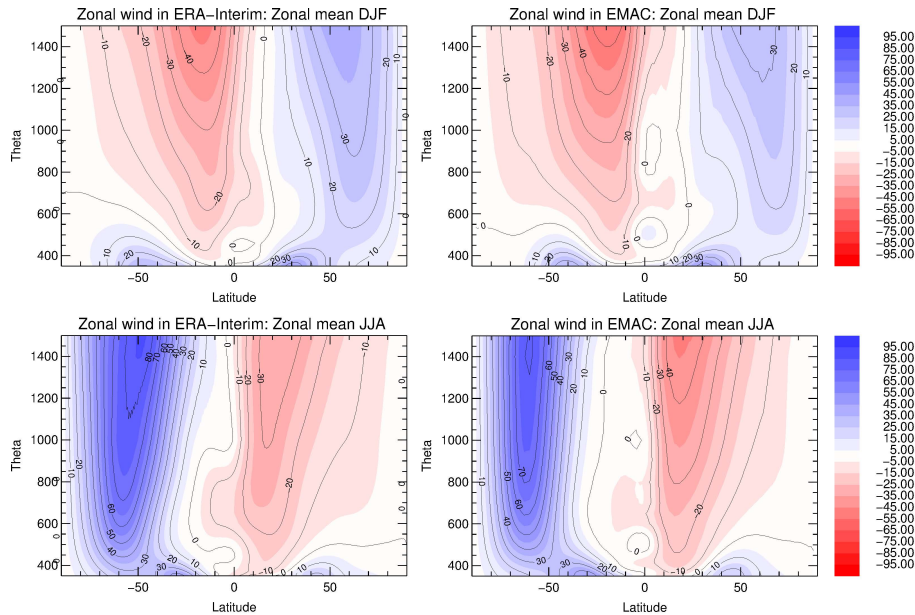


**Fig. 2.** Zonal mean age of air at 50 hPa [years]: simulation results of EMAC/CLaMS as solid blue line, EMAC-FFSL as dotted blue line, and mean age from airborne measurements ( $\text{SF}_6$  (black crosses),  $\text{CO}_2$  (black asterisks)). The measurements are taken from different campaigns with the NASA ER-2 aircraft (Elkins et al., 1996; Boering et al., 1996; Waugh and Hall, 2002).

[Title Page](#)[Abstract](#)[Introduction](#)[Conclusions](#)[References](#)[Tables](#)[Figures](#)[◀](#)[▶](#)[◀](#)[▶](#)[Back](#)[Close](#)[Full Screen / Esc](#)[Printer-friendly Version](#)[Interactive Discussion](#)

## Implementation of the CLaMS Lagrangian Transport core into EMAC

C. M. Hoppe et al.



**Fig. 3.** Zonal mean of zonal wind  $u$  [m s<sup>-1</sup>] from ERA-Interim climatology (left column) and EMAC climatology (right column): December to February (DJF, top panels), and July to August (JJA, bottom panels).

Title Page

Abstract	Introduction
Conclusions	References
Tables	Figures

⏪
⏩

◀
▶

Back
Close

Full Screen / Esc

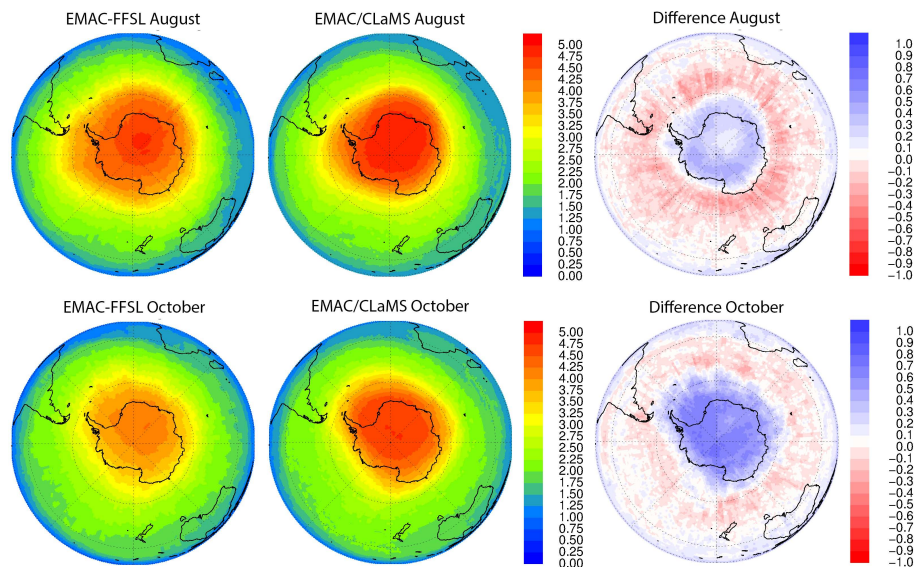
Printer-friendly Version

Interactive Discussion



## Implementation of the CLaMS Lagrangian Transport core into EMAC

C. M. Hoppe et al.



**Fig. 4.** Age of air [years] at 450 K for August (top panels) and October (bottom panels) in the Southern Hemisphere. Left and middle panels display age of air distributions for EMAC-FFSL and EMAC/CLaMS, respectively. Right panels show the absolute difference in mean age of air [years] (EMAC/CLaMS – EMAC-FFSL). Blue colour denotes older air in EMAC/CLaMS, and red colour denotes older air in EMAC-FFSL.

Title Page

Abstract Introduction

Conclusions References

Tables Figures

◀ ▶

◀ ▶

Back Close

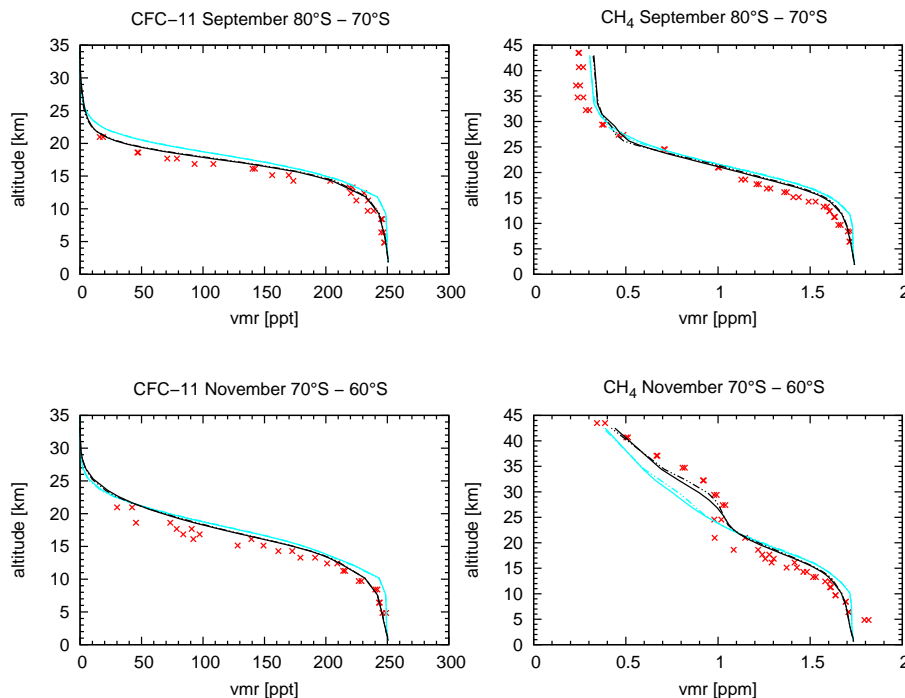
Full Screen / Esc

Printer-friendly Version

Interactive Discussion

## Implementation of the CLaMS Lagrangian Transport core into EMAC

C. M. Hoppe et al.

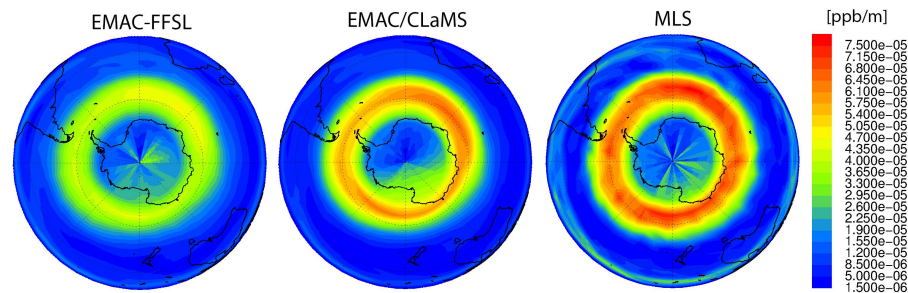


**Fig. 5.** Profiles of CFC-11 and  $\text{CH}_4$  for different months and latitude bins: ACE-FTS climatology is shown in red, blue profiles display simulation results with EMAC-FFSL transport and black profiles show results with EMAC/CLaMS full Lagrangian transport. Solid lines show mean values over 10 years of simulation, whereas dashed-dotted lines indicate results for only the last five years of simulation. The profiles for the simulations have been generated as follows: daily output have been interpolated onto a regular grid, then monthly mean values are calculated. The mean value of all simulated years for the respective latitude bins is shown here. ACE-FTS climatological profiles are shown for  $72.5^\circ\text{S}$  and  $77.5^\circ\text{S}$  in the top panels, and for  $62.5^\circ\text{S}$  and  $67.5^\circ\text{S}$  in the bottom panels, respectively.

[Title Page](#)
[Abstract](#)
[Introduction](#)
[Conclusions](#)
[References](#)
[Tables](#)
[Figures](#)
[Back](#)
[Close](#)
[Full Screen / Esc](#)
[Printer-friendly Version](#)
[Interactive Discussion](#)

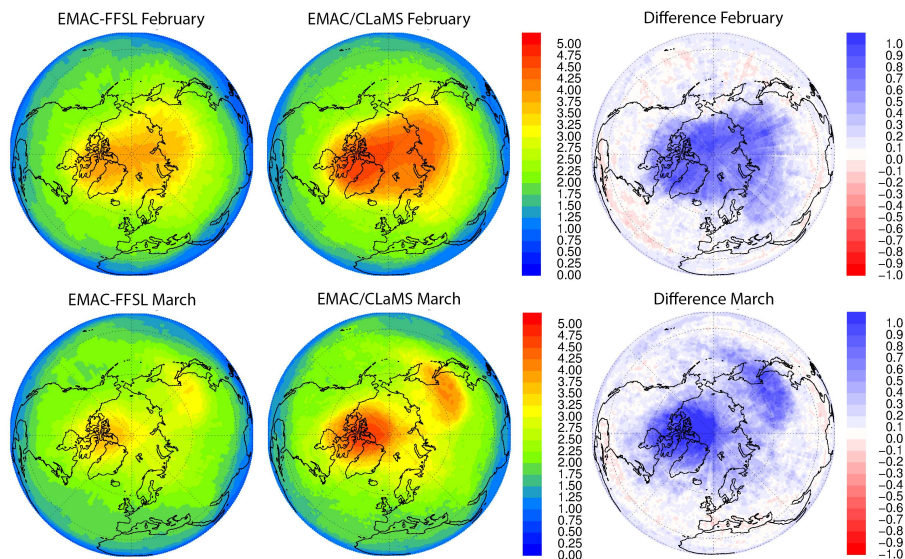
**Implementation of  
the CLaMS  
Lagrangian Transport  
core into EMAC**

C. M. Hoppe et al.

**Fig. 6.** Horizontal gradient of  $\text{N}_2\text{O}$  in September on the 450 K isentropic surface.[Title Page](#)[Abstract](#)[Introduction](#)[Conclusions](#)[References](#)[Tables](#)[Figures](#)[⏪](#)[⏩](#)[◀](#)[▶](#)[Back](#)[Close](#)[Full Screen / Esc](#)[Printer-friendly Version](#)[Interactive Discussion](#)

## Implementation of the CLaMS Lagrangian Transport core into EMAC

C. M. Hoppe et al.



**Fig. 7.** Age of air [years] at 450 K for February (top panels) and March (bottom panels) in the Northern Hemisphere. Left and middle panels display age of air distributions for EMAC-FFSL and EMAC/CLaMS, respectively. Right panels show the absolute difference in mean age of air [years] (EMAC/CLaMS – EMAC-FFSL). Blue colour denotes older air in EMAC/CLaMS, and red colour denotes older air in EMAC-FFSL.

Title Page

Abstract

Introduction

Conclusions

References

Tables

Figures

◀

▶

◀

▶

Back

Close

Full Screen / Esc

Printer-friendly Version

Interactive Discussion