



City Research Online

City, University of London Institutional Repository

Citation: Ream, E., Richardson, A., Lucas, G. ORCID: 0000-0001-5941-5233, Marcu, A., Foster, R., Fuller, G. and Oakley, C. (2021). Understanding the support needs of family members of people undergoing chemotherapy: A longitudinal qualitative study. *European Journal of Oncology Nursing*, 50, 101861.. doi: 10.1016/j.ejon.2020.101861

This is the accepted version of the paper.

This version of the publication may differ from the final published version.

Permanent repository link: <https://openaccess.city.ac.uk/id/eprint/25325/>

Link to published version: <http://dx.doi.org/10.1016/j.ejon.2020.101861>

Copyright: City Research Online aims to make research outputs of City, University of London available to a wider audience. Copyright and Moral Rights remain with the author(s) and/or copyright holders. URLs from City Research Online may be freely distributed and linked to.

Reuse: Copies of full items can be used for personal research or study, educational, or not-for-profit purposes without prior permission or charge. Provided that the authors, title and full bibliographic details are credited, a hyperlink and/or URL is given for the original metadata page and the content is not changed in any way.

City Research Online:

<http://openaccess.city.ac.uk/>

publications@city.ac.uk

1

2

3

4

5

6

7 ***Understanding the support needs of family members of people undergoing chemotherapy: A***
8 ***longitudinal qualitative study***

9

10

11

12

13

14 Abstract

15 *Purpose:* Capture change in family members' experiences as they look after patients during
16 chemotherapy, and understand variability in their needs for support.

17 *Method:* Longitudinal digitally-recorded qualitative semi-structured interviews with family carers at
18 the beginning, mid-point, and end of treatment. Twenty-five family members (17 women, 8 men),
19 mean age 52, were interviewed. Fifteen participants were supporting a relative having
20 chemotherapy with curative intent, and 10 a patient receiving palliative chemotherapy. They were
21 recruited from two UK locations: a regional cancer centre in Southampton and a comprehensive
22 cancer centre in London. Sixty-three interviews were conducted in total, and the data were analysed
23 using Framework Analysis.

24 *Results:* Three themes were generated from the data: *Changing lives, Changing roles; Confidence in*
25 *caring, and Managing uncertainty.* These captured family carers' evolving needs and sense of
26 confidence in caregiving during chemotherapy. Carers reported considerable anxiety at the outset of
27 treatment which persisted throughout. Anxiety was underpinned by fears of disease recurrence or
28 progression and concerns about treatment outcomes.

29 *Conclusions:* This study presents original fine-grained work that captures the changes over time in
30 family carers' experiences of chemotherapy and their adaptation to caregiving. It provides
31 fundamental evidence of the challenges that cancer carers face during patients' treatment; evidence
32 that can be used as a basis for carer assessment and to build much-needed carer interventions.

33 Oncology nurses should assess carers': ability to care; needs for information and support to prepare
34 them for this; wellbeing over time; and, any support they may require to prevent them from
35 becoming overburdened.

36 **Keywords** cancer; chemotherapy; family carers; longitudinal; qualitative; support needs

37

38 Highlights

39

40 Family members' confidence in caregiving can grow as treatment progresses as long as they can
41 access appropriate help when needed.

42 For carers of people having curative chemotherapy, anxiety and stress appear to accumulate over
43 the treatment journey.

44 Carers' experiences and needs should be assessed at multiple time points to enable healthcare
45 professionals to respond effectively to their support needs.

46 1. Introduction

47 A cancer diagnosis profoundly affects both patients and their family and friends. In the
48 United Kingdom, over 360,000 people are diagnosed with cancer annually (Cancer Research UK,
49 2018), and about 1.5 million people provide informal care for them (Macmillan Cancer Support,
50 2016). Informal carers - people including family and friends who give unpaid support to people with
51 cancer - adopt a number of roles. During chemotherapy, these roles include being an advocate,
52 companion, protector and practical caregiver (McIlfatrick et al., 2006; Ream et al., 2013). Further,
53 carers provide patients with significant emotional and physical support, assist with symptom
54 management, help administer medicines and coordinate care (Ullgren et al., 2018).

55 Supporting someone through cancer comes at a cost. Carers can experience extreme strain,
56 anxiety and distress (Grimm et al., 2000; Aranda & Hayman-White, 2001; Matthews, et al., 2003;
57 Deshields et al., 2012; Lambert et al., 2016). This is particularly pronounced during chemotherapy
58 (Renovanz et al., 2018), a treatment associated with toxicities that can prove life-threatening at
59 worst (NCEPOD, 2008) and impact quality of life at best. It evokes considerable fear (Bell, 2009;
60 Hofman et al., 2004) in patients and carers and their anxiety is compounded by chemotherapy
61 typically being provided in outpatient settings. This requires them to monitor and manage side-
62 effects at home (McIlfatrick et al., 2006; McKenzie et al., 2017; Ullgren et al., 2018).

63 Carers report that their needs for information and support are often overlooked by
64 healthcare professionals (Ussher et al., 2009) and consequently go unmet (Sklenarova et al., 2015).
65 They report low self-efficacy in providing care, insecurity around both managing chemotherapy
66 side-effects and recognising changes in patients' health (Williams et al., 2013) and concerns over
67 ensuring patients' safety during chemotherapy (Applebaum and Breitbart, 2013).

68 Through developing a fine-grained understanding of carers' needs for support during cancer
69 treatment, healthcare professionals can develop, evaluate and implement pertinent interventions to
70 alleviate carer distress and enhance their caregiving capacity. While a number of studies have

71 reported on carers' support needs during chemotherapy (McIlfatrick et al., 2006; Ream et al., 2013;
72 Norton et al., 2019), few have examined these over time; a perspective that would give insight into
73 how carers' support needs and confidence in caregiving change as treatment unfolds. Some studies
74 have used a longitudinal approach when exploring cancer carers' experience more generally
75 (Murray et al., 2010; Girgis et al., 2013; Walshe et al., 2017; Roberts et al., 2018) but the challenges
76 faced by carers during chemotherapy have not featured. Few interventions have been developed to
77 address carer needs during chemotherapy (Tsianakas et al., 2015).

78 We sought to address the evidence gap by undertaking a longitudinal qualitative study to
79 describe carers' experiences whilst supporting relatives through chemotherapy and to explore how
80 their support needs and caregiving confidence evolved during of treatment. We focused on the
81 needs of family members as they predominantly – over friends – provide this support. We
82 purposively sampled family members of people having either curative or palliative treatments in
83 order to gain understanding of how this context may impact experience. Such inquiry has not been
84 undertaken to date.

85

86 **2. Methods**

87 *2.1. Design*

88 A longitudinal qualitative design was adopted, entailing digitally-recorded semi-structured
89 interviews conducted with family carers at three points during patients' treatment with intravenous
90 chemotherapy: start of treatment (T1), mid-point (T2) i.e. point where half of the planned cycles of
91 chemotherapy had been administered, and completion of chemotherapy (T3). Interviews focused on
92 carers' need for information and support from healthcare professionals and factors that affect their
93 confidence and competence in caring for someone over the course of chemotherapy. Analysis of
94 longitudinal data can provide rich understandings of changes and/or stability over time, factors that

95 may account for these, and both how and why experiences may vary between individuals (Saldaña,
96 2003; Calman et al., 2013).

97

98 2.2. *Participants*

99 We specifically sought carers of people having combination chemotherapy treatments
100 incorporating cisplatin; these treatments produce significant toxicity and, it was envisaged, would
101 give insight into how carers would manage difficult side-effects. Carers were identified by
102 patients and recruited from a comprehensive cancer centre in London and a regional cancer centre
103 in Southampton, in the south of England, between April 2011 and May 2012. Patients new to
104 chemotherapy were screened for eligibility by the clinical team and approached for consent to
105 recruit the family member they considered their principal provider of care. Patients were usually
106 approached when they attended a pre-treatment consultation. Eligible patients were: receiving
107 cisplatin-based chemotherapy for gynaecological, lung, testicular or colorectal cancer; over 18 years;
108 willing for their family member to be approached; able to communicate in English; having first ever
109 course of chemotherapy; and without any cognitive impediment. Eligible carers were: family
110 members nominated by patients as providing most support; over 18 years; able to communicate in
111 English; and able to comply with the research protocol.

112 Twenty-five participants were sought. This sample size reflects recommendations that
113 qualitative researchers interview fewer than 50 interviewees (Ritchie and Lewis, 2003) in order to
114 maintain quality of data collection and allow in-depth analysis. Further, it is suggested that limited
115 new information is revealed when more than 25-30 participants are interviewed (Hennink et al.,
116 2017). In this study, the research teams in Southampton and London reviewed collectively the data
117 every two weeks to establish the point at which no new information was being generated -
118 information that would either enhance or alter the study findings – indicating that data saturation

119 had been achieved and data collection could cease. Data saturation was achieved at each time point
120 despite fewer interviews being conducted over time (see findings).

121 To capture a broad range of experiences relating to caring for a family member through
122 chemotherapy, carers were selected purposively according to: treatment intent (curative/palliative);
123 age (younger /older than retirement age); gender and, relationship to the patient (spouse/partner
124 and other relationships).

125

126 *2.3. Qualitative interviews*

127 The study was approved by the North London REC3 (now London-Harrow NHS Ethics
128 Committee) REC Ref: 11/H0709/2. The first interview (T1) asked about: perceptions and
129 expectations of chemotherapy; changes to everyday life that had been introduced; information and
130 support needed; and that provided by healthcare professionals. The second (T2) focused on: status
131 of work and other commitments since previous interview; symptoms, side-effects and unplanned for
132 events (e.g. hospitalisation) experienced by their relative; help-seeking undertaken; experience of
133 caring; feelings of confidence and competence in caring; needs for information and support and
134 level to which they were met. The final interview (T3) was similar to T2 except it additionally
135 discussed carers' experiences of chemotherapy in relation to their expectations at the start.

136 Interviews were undertaken by two researchers (JF-J and RF), varied in length from 11
137 minutes to 1.5 hours, were recorded digitally and were professionally transcribed. They were
138 undertaken in a venue of carers' choice: 18 were undertaken in carers' private homes; 19, over the
139 telephone; 23, within the hospital setting, and 3, at the carers' workplace.

140

141 *2.4. Data analysis*

142 Interview data were analysed using Framework Analysis (Ritchie & Lewis, 2003), a matrix-
143 based approach for collating, reviewing and understanding qualitative data- suitable for analysing
144 longitudinal data (Ritchie & Lewis, 2003). A thematic coding framework was devised from recurrent
145 themes within the data (RF, JFJ, ER) and applied across transcribed accounts (RF, JFJ). Coded data
146 were transferred to a matrix that allowed data from each of the interviewees' three interviews to be
147 integrated (rather than analysing each set of interviews independently). Matrices incorporated both
148 narrative summary and relevant quotes in accordance with the Framework Analysis approach (see
149 Figure 1a).

150 [insert Figure 1 here]

151

152 The data were analysed both cross-sectionally through construction of matrices (Figure 1a),
153 and longitudinally (Calman et al., 2013) through mapping individuals' data over the three time
154 periods (Figure 1b). These processes enabled identification of both convergent and divergent
155 experiences between carers at each time point and the capture of within- individual dynamics. It
156 was possible to identify changes in experiences and perceptions over time, both within and across
157 individuals, to explore how these arose and to posit some explanations for them. Data analysis
158 commenced as data were generated and was iterative; the researchers moved back and forth in a
159 systematic manner between generating interview data and analysing them thus allowing areas of
160 questioning to develop as understanding of an area grew or additional clarity was sought.

161

162 **3. Findings**

163 One hundred and one patients were screened for eligibility and 64 eligible carers were
164 approached about the study in order to consent 25 carers as planned. Five carers withdrew before

165 the second interview, and a further two before the third. Withdrawals followed deterioration in
166 patients' health or their death (see Figure 2).

167 [insert Figure 2 here]

168 Seventeen female and 8 male carers were recruited, their average age was 53 years; most
169 were a spouse/partner (n=19). Fifteen carers were supporting a patient having curative
170 chemotherapy (marked 'C' before the participant's number). The remainder supported patients
171 having palliative chemotherapy (marked 'P') (see Tables 1 and 2 for participants' details).

172 [insert Tables 1 and 2 here]

173

174 Data analysis identified three themes that which reflected carers' experiences and support
175 needs over time: *Changing lives, Changing roles; Confidence in caring, and Managing uncertainty*.
176 These themes endured over time but some aspects of them – sub-themes – varied as treatment
177 progressed and patients' needs altered. Some appeared linear with trends (either improvement or
178 decline) over time, whilst others had no evident pattern. Some differences in carer experience were
179 evident according to the intent of patients' treatment (curative versus palliative) (see Table 3).

180 [insert Table 3 here]

181 3.1. *Changing lives, changing roles*

182 The first theme indicates how, across time, carers' lives changed as did the roles they
183 undertook in supporting patients. Carers found that they rapidly (from T1) had to undertake more
184 roles within the home as many relatives' felt the immediate effects of treatment. These obligations
185 grew with time (T2 and 3) and many carers felt accompanying stress. The changing domestic
186 dynamic appeared to have a knock-on effect that was felt more keenly over time (by T2 and T3) on
187 relationships with some becoming stronger and others frayed. Concerns over financial stability were
188 constant (present from T1 and persisting to T3) and influenced by working carers' decisions to

189 decrease (due to caregiving requirements) or increase (due to financial need) employment as
 190 needed. A balance was evident for those of working age – between caregiving and working - that
 191 was challenging for some to achieve.

192 3.1.1. *You doing everything*

193 At the start of treatment, carers described how their lives had been disrupted by the
 194 patient's cancer diagnosis and the many new roles that they undertook in caring for their relative.
 195 They were willing to provide care and wanted to help, but the impact was immediate:

196 *Well, every day after work I have to come over here or I meet my mum and we go to*
 197 *treatment. Or whatever days I'm off I'm over here, cleaning the house, cooking and washing*
 198 *clothes and make everything sterile and make sure everything's clean so that she doesn't get*
 199 *an infection... I live on my own so it's like living two lives. (C4, F, 28, daughter)*

200 By the second interview, a pronounced sense of chemotherapy taking over carers' lives was
 201 evident as caregiving roles began outstripping other social roles and caregiving became 'a job in
 202 itself'. Carers not used to housework, or caring in a physical capacity, felt an acute sense of strain.
 203 Some carers of people having curative treatment struggled with the ongoing burden of caregiving
 204 and voiced some growing frustration and resentment:

205 *Yeah still doing it all but resentments kicked in. I don't know if I said that last time, I think it's*
 206 *just a recent thing. Because when he was in hospital I kept going because you do. But when*
 207 *he's home and he's just laid there, you doing everything, you're tidying up, you're doing the*
 208 *kitchen, you cutting the grass and he's just sat there and you think you know he can't, but at*
 209 *the same time you [think], lazy git. (C5, F, 44, partner)*

210 It was clear that the stress felt by carers, created by caregiving during chemotherapy, did not abate
 211 with time. A high level of unremitting stress, that commenced when chemotherapy started, was felt

212 by all carers. The burden of helping to manage patients' treatment and the associated disruption to
213 carers' lives appeared to increase with time.

214

215 3.1.2. Impact on our interactions

216 Carers accounts made it evident that relationships between carers and patients often
217 changed over the course of chemotherapy; for some relationships improved, whilst for others they
218 declined. By treatment mid-point, carers' everyday roles had changed – many had to undertake
219 additional household chores and were instrumental in ensuring patients attended appointments,
220 took medications and attained help from clinical teams if they become unwell. While for some
221 patient-carer dyads, this changed dynamic within relationships and the home helped to make bonds
222 between them stronger, others found relationships became strained:

223 *It would be easy for me to feel that she doesn't always appreciate what I do for her but there*
224 *again you can't expect people to be continually grateful for what you're doing... Just*
225 *occasionally, erm, she'll be feeling so fed up that, erm... that does impact on our interactions.*
226 (P10, 78, M, husband)

227 The impact of treatment on personal connections extended to broader relationships. Some
228 carers felt distanced from family members and friends and unable to engage in everyday social roles
229 through needing to be at home. They described feeling 'isolated' and struggling to commit to
230 arrangements (P5, 35, M, fiancé). In contrast, other carers, particularly those caring for a relative
231 having palliative chemotherapy, reported feeling closer to, and very supported by, other members of
232 their family. One man caring for his wife with mesothelioma described how his bond with his sons
233 had strengthened:

234 *My two boys now, we now go out every two or three weeks on a Saturday. We have lunch*
235 *and then we have a few beers, which we never used to and I think this is all because they are*

236 *looking out for me. [...] We never used to do it on a regular basis it's about time we did, life's*
237 *too short, as I said, and now we do that. (P7, M, 68, husband)*

238 Thus, although there was a trend over time for carers' relationships to be altered, these could
239 become either fractured or enhanced during chemotherapy according to individual circumstance.
240 Further, this could apply to relationships with not only with the patient but also with their wider
241 family, friendships and social groups.

242

243 3.1.3. *I'm the breadwinner*

244 Thirteen carers were in employment at some point during data collection. At first interview,
245 they reported challenges with balancing demands of caring with those of work:

246 *I'm the breadwinner at the moment and I need to keep that going so it is difficult. Mentally, I*
247 *can cope when I haven't got to do the work-side and just concentrate on him and the house.*
248 (C5, F, 44, partner)

249 Concerns over financial stability were clear from the outset for most carers. Their anxieties
250 were compounded or lessened according to employers' attitudes and practices. Some carers
251 reported having flexible and understanding employers who allowed them time off to support
252 patients at appointments or though periods of acute illness. However, others had inflexible
253 employers; it was not uncommon for them to take unpaid leave or holiday to cover caregiving
254 responsibilities, making their support of patients harder to manage.

255 Carers' concerns over remaining in employment, and earning sufficiently to support their
256 needs, were unabating over the course of their relatives' treatment. Indeed, by the third interview,
257 the need to work reduced the level of support some carers could offer patients, e.g. some needed
258 other family members or friends to attend patients' treatment in their place. Carers' work

259 commitments were often driven by reduced financial circumstances due to patients' inability to
260 work.

261

262 *3.2. Confidence in caring*

263 The second theme reflects carers' confidence in supporting their relative through
264 chemotherapy and managing the side-effects associated with it. Three sub-themes were evident
265 that showed how carers collectively progressed from: trepidation over side-effects and uncertainty
266 about when and how to seek help for them (T1); to growing confidence in recognising and
267 addressing important side-effects (T2); to, the caregiving process becoming routine or second-nature
268 (T3).

269 *3.2.1. We weren't sure if it was a problem*

270 During the first interview, carers expressed trepidation over monitoring chemotherapy side-
271 effects. Some felt well-prepared – buoyed by the assumption that they would have easy access to
272 healthcare professionals to convey 'look, this is happening, or, I can't do this, or so on and so forth.
273 Help!' (P7, 68, M, husband). In practice, this contact and reassurance was not always forthcoming.
274 One carer explained how she could not access help over the weekend, while others found it
275 challenging to decide what constituted an 'urgent' concern:

276 *...you can page a registrar if it's urgent but we weren't sure if it was a problem or if it was*
277 *urgent, so that was probably the most stressful thing, not knowing whether you should*
278 *phone them in the middle of... it was only like 11pm but whether just to... so we just waited*
279 *until the morning. (C11, 27, F, girlfriend)*

280

281 *3.2.2. You know what to look out for*

282 By treatment mid-point, carers felt more confident in recognizing severe symptoms and had
 283 a better understanding of when help-seeking for them was warranted:

284 *I think as it's gone on, you just know what to look out for and you kind of get a feel for what's*
 285 *a problem and what isn't too much of an issue, and just getting used to it, I think. (C11, 27, F,*
 286 *girlfriend)*

287 However, as at T1, they believed it essential to have direct access to healthcare
 288 professionals when required in order to continue building and maintaining confidence in caregiving.
 289 Carers felt more confident in caregiving when they received prompt help from healthcare
 290 professionals, and when they trusted their acute oncology service. Where help-seeking had proved
 291 difficult early in the treatment trajectory, carers remained concerned over monitoring and managing
 292 acute treatment toxicities.

293 3.2.3. Doing it all the time

294 By the end of treatment, most carers reported feeling confident in their ability to support
 295 their relative through chemotherapy and its associated side-effects. This reflected their familiarity
 296 through 'doing it [caregiving] all the time'. However, when new - or less tangible - symptoms arose
 297 e.g. fatigue or weakness, carers reported feeling unsure of how best to help. This undermined some
 298 carers' confidence in their ability to resolve issues and concerns. They also perceived that their
 299 confidence in caregiving was enhanced through establishing trusting relationships with healthcare
 300 professionals:

301 *I got more confident because I knew what I was doing, I knew where I was going. The people*
 302 *were recognisable, they all recognised [patient] and, you know, if I had any problems I felt*
 303 *that they were friendly enough and easy approachable, not sort of someone that I would find*
 304 *intimidating or anything. I could just go up to them and sort of say... no matter if it was a*
 305 *little thing that, you know, oh we've been feeling like this, is this normal? (C8, 51, F, mother)*

306 Whilst time and experience increased carers' confidence in managing side-effects and in
307 gaining help when it was needed, some carers retained elements of uncertainty and felt strong need
308 for ongoing guidance from healthcare professionals.

309

310 *3.3. Managing uncertainty*

311 This theme reflects the manner in which carers experienced uncertainty across the course of
312 patients' chemotherapy with them expressing trepidation at first (T1) and associated anxiety.
313 Thereafter, they referred to the benefits of routine as they adjusted to the 'new normal' of living
314 through chemotherapy and of feeling more in control (T2). Towards the end of treatment (T3)
315 carers were reflective and voiced new concerns, renewed anxiety and increased trepidation as
316 treatment ended. There appeared some differences according to whether patients' treatment was
317 either curative or palliative.

318 *3.3.1. Steel myself for anything*

319 As treatment started, carers voiced concerns about the future, notably about treatment
320 side-effects that they were anticipating. For carers of people having curative chemotherapy,
321 uncertainties became more pronounced as the reality of treatment set in and anxieties manifested
322 about how their relatives would manage:

323 *Well I thought to myself well I'd better steel myself for anything here because I don't know*
324 *how it's going to affect her every day, and I was getting a bit concerned about whether she*
325 *would be able to, would she be in a state to be at home on her own if I was working. (C3, M,*
326 *63, husband).*

327 For some, concerns over disease recurrence appeared at the root of their anxieties; they
328 were concerned that their relative would undergo unpleasant side-effects and risks of chemotherapy

329 without attaining the intended remission from disease. Three carers of people having curative
 330 chemotherapy reported physical complaints at T1 which they related to stress.

331 Carers of people having palliative chemotherapy expressed less anxiety at the start of
 332 treatment, as they *'just had to deal with it'* (P8, F, 33, daughter). They articulated acceptance and
 333 viewed treatment as offering hope whilst acknowledging that death might be inevitable. Carers'
 334 desire for information about prognosis varied: information helped some manage uncertainty – they
 335 wanted to know *'what to expect'* (P7, M, 68, husband), whilst others felt strongly that they did not
 336 want to know more. One explained *'when we saw the oncology specialist at X hospital well she went*
 337 *into so much detail, and we thought why do we need all this detail, you know'* (C12, M, 78, husband).

338

339 3.3.2. Taking control

340 By treatment mid-point, carers voiced how routines of treatment – and the familiarity of
 341 associated symptom patterns – reduced uncertainty. Although caregiving and the demands of
 342 patients' treatment remained unremitting, knowledge of what was happening provided a sense of
 343 control:

344 *I know what the routine is and I expect him to be slightly more poorly in his full week than*
 345 *the week that he is doing one day. So I think, you come to terms with it... I mean, it's become*
 346 *like a routine now. I know what's expected. I know it's going to take 5 hours and I try to*
 347 *manage my time... it's become a bit more... not easier, but it's become a bit more routine*
 348 *because I know what to do now.* (C8, 51, F, mother)

349 However, this was not the same for everyone – for some, the side-effect patterns (with
 350 marked peaks and troughs) stimulated pre-emptive worry over future cycles of treatments and
 351 potential difficulties.

352 Many carers of people having palliative treatment reported that side-effects were fewer
353 than anticipated and they talked positively (as they had at T1) about the 'glimmer of hope' (P8, 33, F,
354 daughter), sense of 'momentum' and 'taking control' that treatment provided (P3, 54, F, daughter).
355 However, for some, fears about how they would manage if the patients' health declined had turned
356 to 'dark moments' and 'anger' (P7, M, 68, husband).

357 In contrast, carers of people having curative treatment voiced a sense of the journey
358 peaking, with side-effects taking longer to subside and their own energy running low. These carers
359 reflected on a new normality shaped by cancer and its treatment, and their reflections were tinged
360 with anxiety when they (often erroneously) interpreted side-effects as signs of cancer spreading.

361

362 3.3.3. *How do we get to the other side?*

363 The final interview provided a chance for carers to reflect. For carers of people having
364 palliative chemotherapy, there was a sense that chemotherapy had been 'a lot less scary' than
365 initially feared (P8, F, 33, daughter). However, the end of treatment also heralded feelings of anxiety
366 for them; concerns remained over how patients could deteriorate and how they would cope as end
367 of life neared. For carers of people having curative chemotherapy, anxiety and stress appeared
368 cumulative. Carers spoke of the need to transition to 'the other side' of treatment as they
369 contemplated what might happen next:

370 *... now everything's over it's actually, oh my god, we've just done all that and we've survived*
371 *[to] the other side, because before we started I said to [patient] how do we get to the other*
372 *side when we get there?' (C5, 44, F, partner)*

373 As one carer articulated, her worries were 'always going to be there' in the future as
374 monitoring and check-ups continued (C8, F, 51, mother). After the routine of treatment and

375 structure of appointments, there emerged a return to uncertainty – as one participant explained,
376 there was an acute sense of uncertainty over ‘what does the future hold?’ (P8, 33, F, daughter).

377

378 **4. Discussion**

379 This is a first study of its kind to describe the experiences over time of carers supporting
380 family members through chemotherapy, and to detail how their needs for support and their
381 confidence in providing care change over the course of treatment. Further, it allowed comparison
382 between the experiences of carers according to whether their relatives were being administered
383 curative or palliative treatment. The study’s longitudinal qualitative design captured the changes
384 over time in carers’ experiences and identified how they could vary according to patients’ disease
385 status, treatment intent and individual circumstance.

386 Across the sample, there was a sense that carers – whilst willing to support their relatives
387 through chemotherapy – sometimes felt overwhelmed by the burden of patients’ illness and its
388 associated treatment. Past research has established that treatment itself is burdensome and can
389 disrupt patients’ daily lives, decrease their desire to follow onerous and complex treatment
390 schedules and diminish patients’ overall quality of life (May et al., 2009). We argue that these
391 burdens are experienced as much by carers as patients. Indeed, previous literature suggests that
392 cancer carers can be profoundly affected during patients’ chemotherapy (Grunfeld et al., 2006;
393 Jenewein et al., 2008). Carers report that the changes to everyday lives, required to support
394 someone through chemotherapy, are challenging to adapt to (McIlfatrick et al., 2006; McKenzie et
395 al., 2017; Schmer et al., 2008). This study identified that carers in employment – particularly those
396 struggling to meet work commitments – are particularly vulnerable to burden and distress. Given
397 that around 50% of carers are in employment (Kent et al., 2019), there is a sizeable population
398 whose vulnerability and needs during patients’ chemotherapy need to be assessed and addressed.
399 Further, this study ascertained that many work-related stressors arise at the start of treatment

400 suggesting that healthcare professionals need to be proactive at this time, as well as revisiting issues
401 related to work later on.

402 The importance to carers of having easy and quick access to health professionals to consult if
403 their relative becomes unwell was evident in this study. However, rapid and straightforward access
404 was not experienced by all carers. This was particularly problematic if lack of support was
405 encountered early in treatment - when carers had uncertainties over what to expect or how to go
406 about help-seeking. Challenges with consulting with professionals will arguably contribute to the
407 isolation, fear and low confidence in caregiving that some carers report (Ream et al., 2013). Further
408 these feelings are liable to increase any anxiety and depression; levels of anxiety in carers can be
409 higher than those experienced by patients and endure for at least five years following patients'
410 diagnosis (Girgis et al., 2013).

411 This study, one of only a few to investigate carers' experience and needs over time, found
412 that their contributions to carers' roles and contributions (McIlfrack et al., 2006) in a somewhat
413 static fashion, failing to highlight the dynamic nature of their caregiving contribution. Further, this
414 study depicted how carers' confidence in caregiving grew as treatment progressed as long as they
415 could access appropriate help when needed. With the advent of acute oncology services, the
416 challenge for patients and carers of gaining quick access to oncology professionals when needed has
417 largely lessened (Neville-Webbe et al., 2013).

418 It was also noteworthy how the outlook and perceptions of chemotherapy held by our study
419 participants – as either a treatment to be feared or one offering hope – differed according to
420 whether chemotherapy was being given to prevent recurrence or as a palliative measure.

421 Additionally, carers' views on transition to life post-chemotherapy varied markedly although all were
422 characterised by uncertainty, at marked odds to feelings of control generated by the routine of
423 treatment. For carers of people having curative treatment, fear of recurrence was evident. For those
424 caring for people completing palliative treatment, uncertainties predominantly centred around the

425 length of time before disease would progress and their – and patients’ – likely resilience as end of
426 life neared. The literature increasingly refers to patients’ fear of recurrence and this concept is
427 relatively well-researched (Armes et al., 2009); however, the nature of fear of recurrence and/or
428 progression held by carers is much less researched, with few exceptions (Hodges & Humphris, 2009).

429 Our research suggests that it is important for healthcare professionals to: i) appreciate
430 differing perspectives held by carers towards chemotherapy according to patients’ prognosis and
431 treatment intent; ii) understand how carers’ ability to provide care and associated burdens of caring
432 are affected by both patient need and their own capacity to care; iii) recognise the challenge for
433 carers on transition to life following chemotherapy, and iv) develop and institute appropriate
434 supportive interventions for carers that can accommodate their changing experience and need.

435 It is important to note that our research focused solely on people that had carers; not every
436 person with cancer has a family member or friend to look after, and support, them through
437 chemotherapy. It is important that the experiences of people without carers to call upon are
438 understood as these patients are likely to find the rigours and burdens of treatment harder to
439 contend with than their counterparts with carers. Interestingly, this group has been the subject of
440 little research to date.

441

442 *4.1 Strengths and limitations of the study*

443 One strength of this study lies in its longitudinal qualitative design which enabled carers’
444 experiences to be captured along the treatment trajectory, advancing much needed
445 conceptualisation of their experiences (Fletcher et al., 2012) and their adjustment to their role.
446 Whilst a few other studies (e.g. Taylor et al., 2016) have taken a longitudinal qualitative approach to
447 explore carers’ experiences during patients’ treatment for cancer, they have not specifically focused
448 on how carers’ experiences vary during chemotherapy – a particularly challenging form of treatment
449 that can pose high risk to patients.

450 The main limitation to the study lies in the fact that the findings represent only some carers'
451 experiences. From 64 eligible carers approached about the study, around 60% (of either patients or
452 their carers) declined participation as they felt that they had too much to deal with without taking
453 part. Arguably, the carers and patients who declined participation may have had more acute needs
454 and/or more diverse experiences than the ones who participated.

455 Additionally, it was not possible to comment on the experience over time of those who
456 withdrew between the first and last interview. These carers withdrew because either their relatives'
457 health had declined or they had died.

458 The majority of those interviewed were the patients' partner or spouse. However, these
459 carers intimated during their interviews, that wider family members were affected by their relatives'
460 chemotherapy and were also involved in – and affected by - caregiving. These carers were not
461 represented within our sample. The complexity of situations involving multiple carers warrants
462 further investigation.

463 Another potential limitation to the study relates to the fact that we recruited only carers of
464 people being treated with cisplatin-based treatments; treatments known to have significant toxicity.
465 It is possible that carers looking after patients receiving different chemotherapy treatments may
466 have had different experiences from those captured in this study.

467

468 **5. Conclusions**

469 Chemotherapy is – and will remain – an important treatment for cancer for the foreseeable
470 future and will continue to be delivered primarily in day care settings. This requires carers to take
471 considerable responsibility for patient wellbeing at home. Carers play an important role in patient
472 safety – recognising and responding to symptoms and knowing when to access help for acute
473 toxicities which can lead to sudden patient deterioration. It is essential that healthcare professionals
474 prepare carers and ensure that they are well equipped for, and supported in, caregiving in; this will
475 help to safeguard patient safety. Carers' input enables healthcare services to operate and

476 contributes substantially to cost reduction at the end of life (Round et al., 2015) as patients and
477 clinicians rely on carers' support and care management skills (McKenzie et al., 2017). This study
478 suggests that some carers are at risk of becoming overburdened by requirements imposed by
479 patients' illness, fear for the future and requirements of treatment. However, conversely carers can
480 be very positive, upbeat and manage caring without detriment to their own wellbeing. Thus, it is
481 important that they have their caring ability and needs assessed, particularly as they may be
482 reluctant to ask for support (Renovanz et al., 2018). The demands on them – and their needs for
483 assistance – are often overlooked (Ussher et al., 2009). Given the dynamic nature of carers'
484 experiences, this study suggests that their needs should be assessed periodically.

485

486 Finally, as indicated in previous research focusing on cancer carers' needs (Ream et al.,
487 2013), this study points to the need for carer interventions that prepare carers for, and sustain them
488 during, caregiving. Such interventions need to be pragmatic and feasible to deliver in what is
489 effectively a clinical busy setting. One intervention – Take Care[®] – reported in the literature outlines
490 the potential of a brief educative intervention for enhancing carers' self-efficacy for caregiving
491 during chemotherapy (Tsianakas et al., 2015). It is the only intervention written about in the
492 literature developed specifically for supporting cancer carers during this time. This is clearly an area
493 that needs greater research and development in future.

494 **Conflicts of interest**

495 None declared.

496 **Ethical approval**

497 This study was approved by North London REC3, REC reference number 11/H0709/2.

498 **Acknowledgements**

499 This research was made possible through a grant from [funder's name and grant number withheld
 500 for blind reviewing purposes] and the generosity of the informal carers who gave their time so their
 501 stories and experiences could be captured. We would also like to acknowledge the support of nurses
 502 in the day units where this research was conducted and thank them for their much valued assistance
 503 with recruitment. Without their support this research would not have been possible.

504 References

- 505
 506 Applebaum, A. J., & Breitbart, W. (2013). Care for the cancer caregiver: a systematic review.
 507 *Palliative & Supportive Care*, *11*(3), 231-252.
 508 doi:<https://doi.org/10.1017/S1478951512000594>
- 509 Aranda, S. K., & Hayman-White, K. (2001). Home caregivers of the person with advanced cancer: an
 510 Australian perspective. *Cancer Nursing*, *24*(4), 300-307.
- 511 Armes, J., Crowe, M., Colbourne, L., Morgan, H., Murrells, T., Oakley, C., Palmer, N., Ream, E., Young,
 512 A., Richardson, A. (2009). Patients' supportive care needs beyond the end of cancer
 513 treatment: a prospective, longitudinal survey. *Journal of Clinical Oncology*, *27*(36), 6172-
 514 6179. doi:<https://doi.org/10.1200/JCO.2009.22.5151>
- 515 Armes, P. J., & Addington-Hall, J. M. (2003). Perspectives on symptom control in patients receiving
 516 community palliative care. *Palliative Medicine*, *17*(7), 608-615.
 517 doi:10.1191/0269216303pm801oa
- 518 Bell, K. (2009). 'If it almost kills you that means it's working!' Cultural models of chemotherapy
 519 expressed in a cancer support group. *Social science & Medicine*, *68*(1), 169-176.
 520 doi:<https://doi.org/10.1016/j.socscimed.2008.10.023>
- 521 Calman, L., Brunton, L., & Molassiotis, A. (2013). Developing longitudinal qualitative designs: lessons
 522 learned and recommendations for health services research. *BMC Medical Research*
 523 *Methodology*, *13*(1), 14.
- 524 Cancer Research UK. (2018). Cancer Statistics for the UK. Retrieved from
 525 <http://www.cancerresearchuk.org/health-professional/cancer-statistics-for-the-uk>
- 526 Deshields, T. L., Rihanek, A., Potter, P., Zhang, Q., Kuhrik, M., Kuhrik, N., & O'Neill, J. (2012).
 527 Psychosocial aspects of caregiving: perceptions of cancer patients and family caregivers.
 528 *Supportive Care in Cancer*, *20*(2), 349-356.
- 529 Fletcher, B. S., Miaskowski, C., Given, B., & Schumacher, K. (2012). The cancer family caregiving
 530 experience: an updated and expanded conceptual model. *European Journal of Oncology*
 531 *Nursing*, *16*(4), 387-398. doi:<https://doi.org/10.1016/j.ejon.2011.09.001>
- 532 Girgis, A., Lambert, S. D., McElduff, P., Bonevski, B., Lecathelinais, C., Boyes, A., & Stacey, F. (2013).
 533 Some things change, some things stay the same: a longitudinal analysis of cancer caregivers'
 534 unmet supportive care needs. *Psycho-Oncology*, *22*(7), 1557-1564.
 535 doi:<https://doi.org/10.1002/pon.3166>
- 536 Grimm, P. M., Zawacki, K. L., Mock, V., Krumm, S., & Frink, B. B. (2000). Caregiver responses and
 537 needs: An ambulatory bone marrow transplant model. *Cancer Practice*, *8*(3), 120-128.
 538 doi:<https://doi.org/10.1046/j.1523-5394.2000.83005.x>
- 539 Grunfeld, E. A., Maher, E. J., Browne, S., Ward, P., Young, T., Vivat, B., Walker, G., Wilson, C., Potts,
 540 H.W., Westcombe, A. M., Richards, M., Ramirez, A.J. (2006). Advanced breast cancer
 541 patients' perceptions of decision making for palliative chemotherapy. *J Clin Oncol*, *24*(7),
 542 1090-1098. doi:<https://doi.org/10.1200/JCO.2005.01.9208>
- 543

- 544 Hennink, M. M., Kaiser, B. N., & Marconi, V. C. (2017). Code saturation versus meaning saturation:
545 how many interviews are enough? *Qualitative Health Research*, 27(4), 591-608.
- 546 Hodges, L. J., & Humphris, G. M. (2009). Fear of recurrence and psychological distress in head and
547 neck cancer patients and their carers. *Psycho-Oncology*, 18(8), 841-848.
- 548 Hofman, M., Morrow, G. R., Roscoe, J. A., Hickok, J. T., Mustian, K. M., Moore, D. F., Ware, J.I., Fitch,
549 T. R. (2004). Cancer patients' expectations of experiencing treatment-related side effects.
550 *Cancer*, 101(4), 851-857. doi:<https://doi.org/10.1002/cncr.20423>
- 551 Jenewein, J., Zwahlen, R., Zwahlen, D., Drabe, N., Moergeli, H., & Büchi, S. (2008). Quality of life and
552 dyadic adjustment in oral cancer patients and their female partners. *European Journal of*
553 *Cancer Care*, 17(2), 127-135. doi:<https://doi.org/10.1111/j.1365-2354.2007.00817.x>
- 554 Kent, E., Mollica, M., Buckenmaier, S., Wilder Smith, A. (2019) The characteristics of informal cancer
555 caregivers in the United States. *Seminars in Oncology Nursing* 35(4):328–
556 332. <https://doi.org/10.1016/j.soncn.2019.06.002>
- 557 Lambert, S. D., McElduff, P., Girgis, A., Levesque, J. V., Regan, T. W., Turner, J., McElduff P., Kayser K.,
558 Vallentine, P. (2016) A pilot, multisite, randomized controlled trial of a self-directed coping
559 skills training intervention for couples facing prostate cancer: accrual, retention, and data
560 collection issues. *Supportive Care in Cancer*, 24(2), 711-722. doi:10.1007/s00520-015-2833-
561 3
- 562 Macmillan Cancer Support. (2011). *More than a Million: Understanding the UK's carers of people*
563 *with cancer*. Retrieved from London:
564 [https://www.macmillan.org.uk/documents/cancerinfo/ifsomeoneelsehascancer/more_than](https://www.macmillan.org.uk/documents/cancerinfo/ifsomeoneelsehascancer/more_than_a_million.pdf)
565 [a_million.pdf](https://www.macmillan.org.uk/documents/cancerinfo/ifsomeoneelsehascancer/more_than_a_million.pdf)
- 566 Macmillan Cancer Support. (2016). *Under pressure: The growing strain on cancer carers*. Retrieved
567 from London:
568 [https://www.macmillan.org.uk/documents/campaigns/under-pressure-the-growing-strain-](https://www.macmillan.org.uk/documents/campaigns/under-pressure-the-growing-strain-on-cancer-carers-macmillan-cancer-support-september-2016.pdf)
569 [on-cancer-carers-macmillan-cancer-support-september-2016.pdf](https://www.macmillan.org.uk/documents/campaigns/under-pressure-the-growing-strain-on-cancer-carers-macmillan-cancer-support-september-2016.pdf)
- 570 Matthews, B., Baker, F., & Spillers, R. (2003). Family caregivers and indicators of cancer-related
571 distress. *Psychology, health & medicine*, 8(1), 46-56.
572 doi:<https://doi.org/10.1080/1354850021000059250>
- 573 May, C., Montori, V. M., & Mair, F. S. (2009). We need minimally disruptive medicine. *BMJ*, 339,
574 b2803.
- 575 McIlfratrick, S., Sullivan, K., & McKenna, H. (2006). What about the carers?: Exploring the experience
576 of caregivers in a chemotherapy day hospital setting. *European Journal of Oncology Nursing*,
577 10(4), 294-303.
- 578 McKenzie, H., White, K., Hayes, L., Fitzpatrick, S., Cox, K., & River, J. (2017). 'Shadowing' as a
579 management strategy for chemotherapy outpatient primary support persons. *Scandinavian*
580 *journal of caring sciences*, 31(4), 887-894. doi:<https://doi.org/10.1111/scs.12410>
- 581 Murray, S. A., Kendall, M., Boyd, K., Grant, L., Highet, G., & Sheikh, A. (2010). Archetypal trajectories
582 of social, psychological, and spiritual wellbeing and distress in family care givers of patients
583 with lung cancer: secondary analysis of serial qualitative interviews. *BMJ*, 340, c2581. doi:
584 <https://doi.org/10.1136/bmj.c2581>
- 585 NCEPOD (2008). *For better, for worse? A review of the care of patients who died within 30 days of*
586 *receiving systemic anti-cancer therapy*. Retrieved from London:
587 http://www.ncepod.org.uk/2008report3/Downloads/SACT_report.pdf
- 588 Neville-Webbe, H., Carser, J., Wong, H., Andrews, J., Poulter, T., Smith, R., & Marshall, E. (2013). The
589 impact of a new acute oncology service in acute hospitals: experience from the Clatterbridge
590 Cancer Centre and Merseyside and Cheshire Cancer Network. *Clinical Medicine*, 13(6), 565-
591 569.
- 592 Norton, S., Wittink, M., Duberstein, P., Prigerson, H., Stanek, S., Epstein, R. Family caregiver
593 descriptions of stopping chemotherapy and end-of-life transitions. *Support Care Cancer*.
594 2019;27(2):669-675. doi:10.1007/s00520-018-4365-0

- 595 Ream, E., Pedersen, V., Oakley, C., Richardson, A., Taylor, C., & Verity, R. (2013). Informal carers'
 596 experiences and needs when supporting patients through chemotherapy: a mixed method
 597 study. *European Journal of Cancer Care*, 22(6), 797-806. doi: 10.1111/ecc.12083
- 598 Renovanz, M., Maurer, D., Lahr, H., Weimann, E., Deininger, M., Wirtz, C. R., Ringel, F., Singer, S.,
 599 Coburger, J. (2018). Supportive Care Needs in Glioma Patients and Their Caregivers in Clinical
 600 Practice: Results of a Multicenter Cross-Sectional Study. *Frontiers in Neurology*, 9(763).
 601 doi:10.3389/fneur.2018.00763
- 602 Ritchie, J., & Lewis, J. (2003). *Qualitative Research Practice. A Guide for Social Science Students and*
 603 *Researchers*. London: Sage Publications.
- 604 Roberts, D., Calman, L., Large, P., Appleton, L., Grande, G., Lloyd-Williams, M., & Walshe, C. (2018). A
 605 revised model for coping with advanced cancer. Mapping concepts from a longitudinal
 606 qualitative study of patients and carers coping with advanced cancer onto Folkman and
 607 Greer's theoretical model of appraisal and coping. *Psycho-Oncology*, 27(1), 229-235.
- 608 Round, J., Jones, L., & Morris, S. (2015). Estimating the cost of caring for people with cancer at the
 609 end of life: A modelling study. *Palliative Medicine*, 29(10), 899-907.
- 610 Saldaña, J. (2003). *Longitudinal Qualitative Research: Analysing Change Through Time*. Walnut
 611 Creek, California: Alta Mira Press.
- 612 Schmer, C., Ward-Smith, P., Latham, S., & Salacz, M. (2008). When a family member has a malignant
 613 brain tumor: the caregiver perspective. *Journal of Neuroscience Nursing*, 40(2), 78-84.
- 614 Sklenarova, H., Krümpelmann, A., Haun, M. W., Friederich, H. C., Huber, J., Thomas, M., Winkler, E.
 615 C., Herzog, W., Hartmann, M. (2015). When do we need to care about the caregiver?
 616 Supportive care needs, anxiety, and depression among informal caregivers of patients with
 617 cancer and cancer survivors. *Cancer*, 121(9), 1513-1519. doi:10.1002/cncr.29223
- 618 Taylor, A., Wells, M., Hubbard, G., & Worth, A. (2016). From an illusion of certainty into a reality of
 619 uncertainty: A longitudinal qualitative study of how people affected by laryngeal cancer use
 620 information over time. *European Journal of Oncology Nursing*, 23, 15-23.
- 621 Tsianakas, V., Robert, G., Richardson, A., Verity, R., Oakley, C., Murrells, T., Flynn, M., Ream, E.
 622 (2015). Enhancing the experience of carers in the chemotherapy outpatient setting: an
 623 exploratory randomised controlled trial to test impact, acceptability and feasibility of a
 624 complex intervention co-designed by carers and staff. *Supportive Care in Cancer*, 23(10),
 625 3069-3080.
- 626 Ullgren, H., Tsitsi, T., Papastavrou, E., & Charalambous, A. (2018). How family caregivers of cancer
 627 patients manage symptoms at home: A systematic review. *International Journal of Nursing*
 628 *Studies*, 85, 68-79. doi:<https://doi.org/10.1016/j.ijnurstu.2018.05.004>
- 629 Ussher, J. M., Perz, J., Hawkins, Y., & Brack, M. (2009). Evaluating the efficacy of psycho-social
 630 interventions for informal carers of cancer patients: A systematic review of the research
 631 literature. *Health Psychology Review*, 3(1), 85-107.
 632 doi:<https://doi.org/10.1080/17437190903033401>
- 633 Walshe, C., Roberts, D., Appleton, L., Calman, L., Large, P., Lloyd-Williams, M., & Grande, G. (2017).
 634 Coping well with advanced cancer: A serial qualitative interview study with patients and
 635 family carers. *PloS one*, 12(1), e0169071.
- 636 Williams, A.-I., Tisch, A. J. H., Dixon, J., & McCorkle, R. (2013). Factors associated with depressive
 637 symptoms in cancer family caregivers of patients receiving chemotherapy. *Supportive Care in*
 638 *Cancer*, 21(9), 2387-2394.

639

640

641 **Figure 1. Extracts depicting data analysis process**642 **1a: Example of matrix used in longitudinal analysis: Combining working and caring responsibilities**

ID	Carer gender Treatment intent	Relationship with patient	Combining working and caring responsibilities
C3	F Curative	Husband	T1: Finding it very tiring combining work and caring responsibilities T2: Difficulties juggling both. '... there were times when she [his wife] was so bad that I had to ring up work and say I can't come in I've got to help, you know...'. Work have been very accommodating. T3: No data – no interview possible
C6	M Curative	Wife	T1: Has had to use annual leave to accompany husband to hospital. Only two days paid leave left. T2: Still working, employers really supportive allowing her to take time off as required. Annual leave nearly run out. T3: Continuing working. Taking unpaid leave as needed.
C11	M Curative	Girlfriend	T1: Not working. Appears overwhelmed emotionally, exhausted. Recognises if did work she's unsure how she would accommodate chores, caring responsibilities as well as job T2: Mentions she is a procrastinator. Wants to look for work, but finding it hard to get motivated to do this. T3: Back in work but: 'it's been really hard doing both at once and I do kind of feel it must be what Mums feel like when they go back to work, like I'm not doing really either of them properly - but erm, I think I'm seeing it as a short-term thing and the hoping if you know all is well with his scan results...I'd rather work at the moment while he is able to get up and about and do things for himself'.
P1	M Palliative	Wife	T1: Working: using free periods (is supply teacher), when she doesn't need to be at school, to be with her husband. Has two lodgers who she now has to cook for (husband was responsible for household tasks). They have livestock that need taking care of. T2: Livestock have been moved closer to home so that she can keep an eye on them more easily. T3: Trying to ensure hospital appointments are scheduled so that she doesn't have to take time off work. But if she needs to, she will.
P8	M Palliative	Daughter	T1: Not working T2: Stresses her father is her priority, but struggling without regular income, looking for flexible freelance jobs. Finds it difficult not being able to afford simple things to cheer herself up. Everything a 'juggling act' especially as she also has chronic illness herself. T3: Now working so unable to accompany her father to treatment, boyfriend is helping out... 'the big factor now is there's not anyone that's really replaced my time with Dad, so you know, it's quite snatched time I'm spending with him now. With his last chemo my boyfriend rearranged his job and went to Dad's chemo with him'.

643

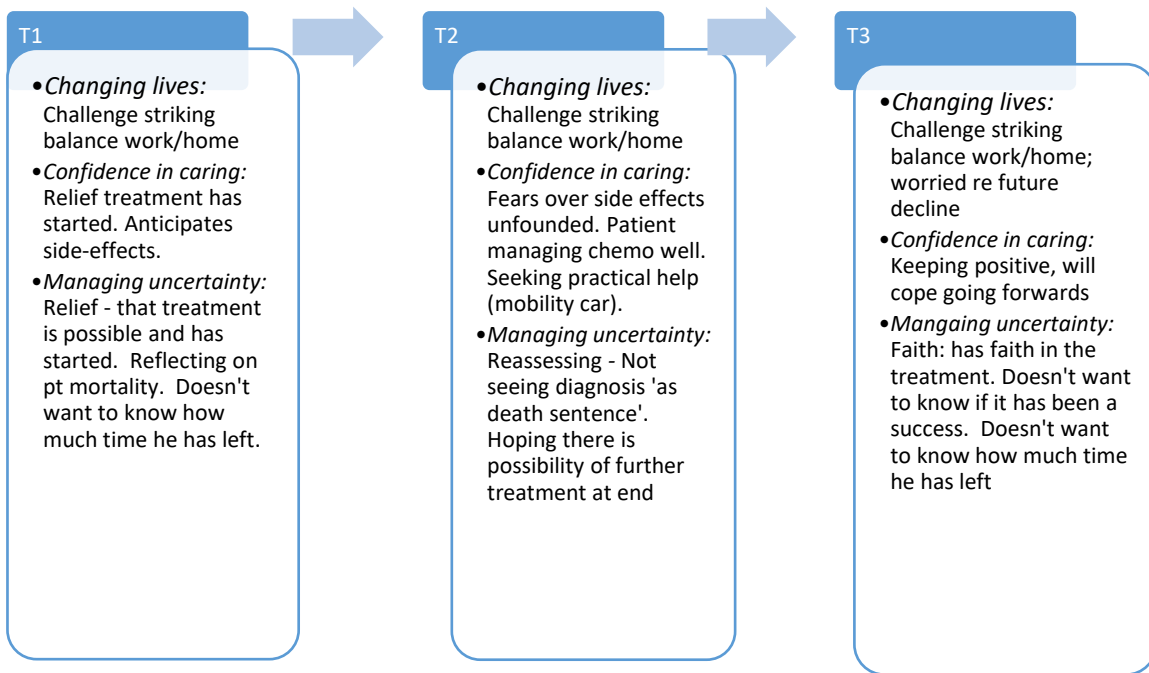
644

645

646

647

648 **1b: Example of mapping over time for Carer P1**



649

650

651

652

653

Figure 2: Flow of participants through the study

654

655

656

657

658

659

660

661

662

663

664

665

666

667

668

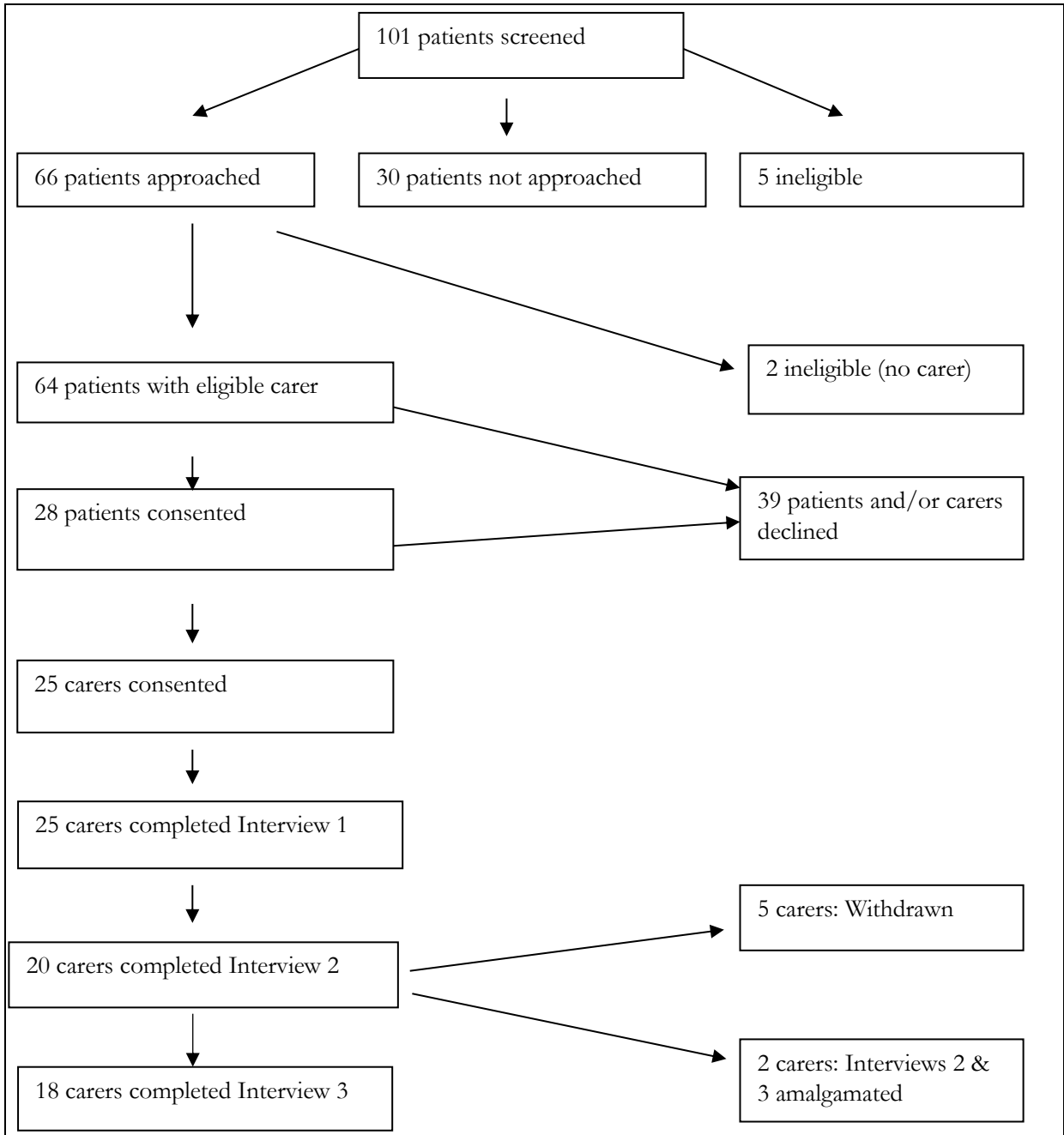
669

670

671

672

673



674

675

676 **Table 1. Characteristics of carers recruited to the study**

Age	Mean 52.6 (range 18-78)	
	N	%
Gender		
Female	17	68
Male	8	32
Relationship to patient		
Spouse/partner	19	76
Daughter	5	20
Mother	1	4
Patients' cancer diagnosis		
Lung	11	44
Colorectal	6	24
Cervical	3	12
Testicular	2	8
Ovarian	2	8
Endometrial	1	4
Intent of treatment		
Curative	15	60
Palliative	10	40
Length of treatment		
>4 months	10	40
2-4 months	9	36
<2 months	6	24

677

678

679 **Table 2. Details of the individual carers**

Carer ID	Carer age	Carer gender	Relationship to patient	Patient's diagnosis	Intent of treatment	Length of treatment
P1	51	Female	Wife	Lung	Palliative	>2-4 months
P2	35	Female	Wife	Lung	Palliative	>2-4 months
P3	54	Female	Daughter	Lung	Palliative	>2-4 months
P4	65	Female	Wife	Lung	Palliative	>2-4 months
P5	35	Male	Fiancé	Colorectal	Palliative	>2-4 months
P6	60	Female	Wife	Colorectal	Palliative	>4 months
P7	68	Male	Husband	Mesothelioma	Palliative	>4 months
P8	33	Female	Daughter	Mesothelioma	Palliative	>4 months
P9	67	Female	Wife	Lung	Palliative	<2 months
P10	78	Male	Husband	Ovarian	Palliative	>2-4 months
C1	75	Male	Husband	Lung	Curative	<2 months
C2	60	Female	Wife	Lung	Curative	>4 months
C3	63	Male	Husband	Colorectal	Curative	>2-4 months
C4	28	Female	Daughter	Cervical	Curative	<2 months
C5	44	Female	Partner	Lung	Curative	<2 months
C6	29	Female	Wife	Testicular	Curative	>2-4 months
C7	65	Female	Wife	Colorectal	Curative	>4 months
C8	51	Female	Mother	Testicular	Curative	>2-4 months
C9	25	Female	Daughter	Lung	Curative	<2 months
C10	71	Male	Husband	Cervical	Curative	>4 months
C11	27	Female	Girlfriend	Colorectal	Curative	>4 months
C12	78	Male	Husband	Ovarian	Curative	>4 months
C13	66	Female	Wife	Colorectal	Curative	>4 months
C14	70	Male	Husband	Endometrial	Curative	>4 months
C15	18	Female	Daughter	Cervical	Curative	<2 months

680

681

682 **Table 3. Change in carers' needs and experiences over time**

683

	Constant	Fluctuating; no evident pattern	Increasing with time
<i>Theme 1: Changing lives, Changing roles</i>			
Changed role at home, burden of responsibility (<i>Subtheme: You do everything</i>)			*
Stress & worry over maintaining work and/or duties in the home & caring responsibility (<i>Subtheme: You do everything</i>)	*		
Impact on relationships; either strengthened or strained (<i>Subtheme: Impact on interactions</i>)			*
Financial worries (<i>Subtheme: I'm the breadwinner</i>)	*		
<i>Theme 2: Confidence in Caring</i>			
Need for health care professional input, support & information (<i>Subtheme: We weren't sure it was a problem</i>)	*		
Confidence in accessing help & identifying problems (<i>Subtheme: You know what to look out for; Doing it all the time</i>)			*
Challenges with new symptoms and situations (<i>Subtheme: We weren't sure it was a problem</i>)		*	
<i>Theme 3: Managing Uncertainty</i>			
Fear about recurrence or spread (Curative patients) (<i>Subtheme: Steel myself for anything</i>)	*		
Worries about patient's decline and end of life (Palliative patients) (<i>Subtheme: How do we get to the other side?</i>)			*
Belief that treatment offers hope (Palliative patients) (<i>Subtheme: Steel myself for anything</i>)	*		
Needs for information (<i>Subthemes: Steel myself for anything; Taking control</i>)	*		
Anxiety and stress (<i>Subthemes: Steel myself for anything; How do we get to the other side?</i>)		*	

684