

CASE REPORT

Open Access

Differentiation of local tumor recurrence from radiation-induced changes after stereotactic radiosurgery for treatment of brain metastasis: case report and review of the literature

Philipp Kickingeder^{1†}, Franziska Dorn², Tobias Blau³, Matthias Schmidt⁴, Martin Kocher⁵, Norbert Galldiks^{6,7†} and Maximilian I Ruge^{1*†}

Abstract

Background: Structural follow-up magnetic resonance imaging (MRI) after stereotactic radiosurgery (SRS) for brain metastases frequently displays local changes in the area of applied irradiation, which are often difficult to interpret (e.g., local tumor recurrence, radiation-induced changes). The use of stereotactic biopsy for histological assessment of these changes has a high diagnostic accuracy and can be considered as method of choice. In order to solve this relevant clinical problem non-invasively, advanced MRI techniques and amino acid positron-emission-tomography (PET) are increasingly used.

Case presentation: We report the long-term follow-up of a patient who had been treated with linear accelerator based SRS for cerebral metastases of a lung cancer. Fifty-eight months after SRS, the differentiation of local recurrent brain metastasis from radiation-induced changes using structural MRI was difficult. For further differentiation, perfusion-weighted MRI (PWI), proton magnetic resonance spectroscopy (MRS), and ¹¹C-methyl-L-methionine (MET) PET was performed. Due to artifacts and technical limitations, PWI MRI and MRS findings were not conclusive. In contrast, MET PET findings were suggestive for radiation-induced changes. Finally, a stereotactic biopsy for histological assessment of these changes demonstrated clearly a radiation-induced necrosis and the absence of vital tumor.

Conclusion: The use of stereotactic biopsy for histological assessment of indistinguishable lesions on structural MRI after SRS for treatment of brain metastasis represents a highly reliable method to differentiate local tumor recurrence from radiation-induced changes. In this field, results of studies with both advanced MRI techniques and amino acid PET suggest encouraging results. However, artifacts and technical limitations (e.g., lesion size) are still a problem and comparative studies are needed to investigate the relationship, diagnostic performance, and complementary character of advanced MRI techniques and amino acid PET.

Keywords: Brain metastases, Radiation-induced changes, Tumor recurrence, Stereotactic-guided biopsy, PET, Advanced MRI techniques

* Correspondence: maximilian.ruge@uk-koeln.de

†Equal contributors

¹Department for Stereotaxy and Functional Neurosurgery, University of Cologne, Kerpener Str. 62, 50937 Cologne, Germany

Full list of author information is available at the end of the article

Background

Early detection of brain metastasis provided by advanced screening programs as well as improvements of treatment in general oncology is positively influencing the course of the disease and overall survival of patients with brain metastases. To date, the use of stereotactic radiosurgery (SRS) is a widely accepted treatment option for (singular) cerebral metastasis [1-3]. As a consequence, the appearance of local signal changes on follow-up MRI in the irradiated region is observed in up to 22% of cases after SRS [4]. The interpretation of findings of structural magnetic resonance imaging (MRI) at follow-up after treatment with SRS (i.e., changing patterns of contrast enhancement and alterations of T2-/FLAIR-weighted images) is difficult or even impossible in order to differentiate local tumor recurrence from radiation-induced changes [5-8]. Furthermore, little experience is reported whether and when these changes occur in patients during long-term follow-up.

We present a follow-up of more than 5 years of a patient after treatment of cerebral metastases using SRS. During follow-up, the assignment of structural MRI changes to local tumor recurrence or radiation-induced changes was difficult. Regarding this clinically relevant issue, we discuss noninvasive advanced imaging methods based on MRI (i.e., perfusion-weighted MRI (PWI), proton magnetic resonance spectroscopy (MRS), and positron-emission-tomography (PET)).

Case presentation

In November 2005, in a 58-year-old male patient an adenocarcinoma of the lung was diagnosed and he underwent multimodal treatment including resection of the upper pulmonary lobe and adjuvant chemotherapy. Nine months later (July 2006), a follow-up MRI revealed a contrast-enhancing solitary lesion in the left frontal brain, highly suggestive for a brain metastasis originating from adenocarcinoma of the lung (Figure 1). The lesion was treated by linear accelerator (LINAC) based SRS (tumor volume, 0.6 ml; surface dose, 20 Gy; isodose level, 65%) [9,10]. Follow-up MRI after 3 months (Figure 1) showed a decrease of contrast enhancement > 50% of the treated lesion (partial response according to the Macdonald criteria [11]) as well as a new enhancing lesion also suggestive for a metastasis in the left temporal lobe (Figure 1), which was also treated with LINAC based SRS (tumor volume, 1.2 ml; surface dose, 20 Gy; isodose level, 65%). The subsequent MRI performed in December 2006 showed complete remission of both metastases (images not shown).

Thirty-seven months after SRS of the left temporal metastasis, a new contrast-enhancing lesion with perifocal edema was detected in the area of applied irradiation (Figure 1). Due to further progression of size in the follow-up MRI one month later (tumor volume, 2.8 ml), the lesion was highly suspicious for local tumor recurrence. In order to differentiate local tumor

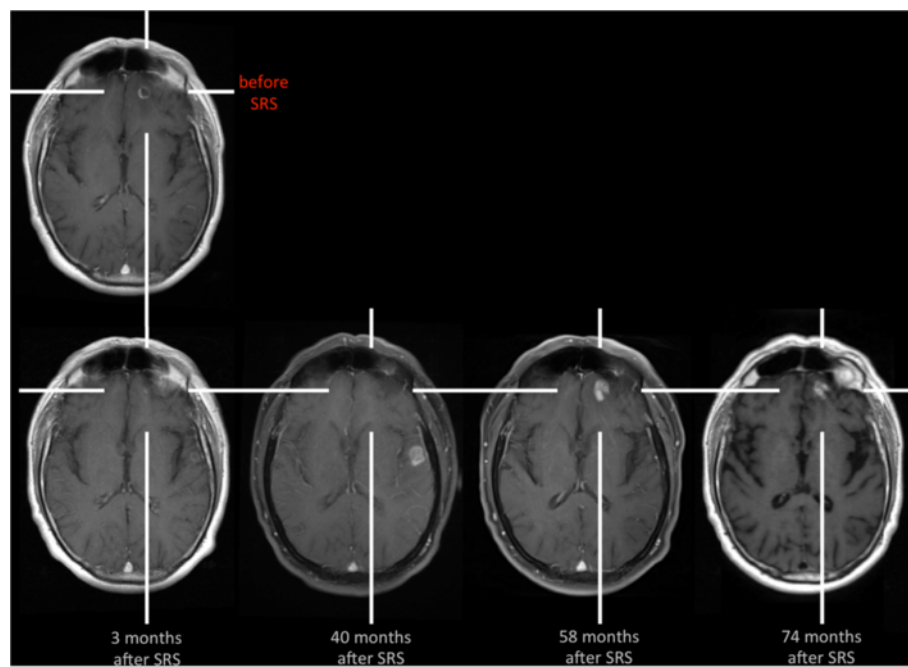


Figure 1 Contrast-enhanced MR images during the course of the disease. Fifty-eight months after LINAC SRS of the left frontal metastasis, contrast enhancement recurs within the area of applied irradiation. A differentiation of local tumor recurrence from radiation-induced changes is not possible.

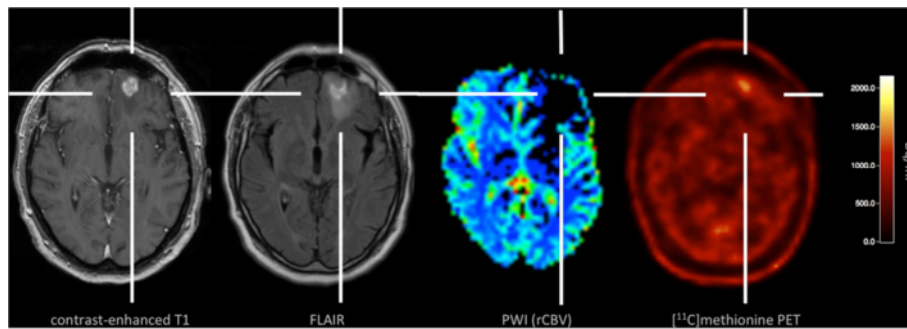


Figure 2 Multimodal imaging with structural MRI (contrast-enhanced T1- and FLAIR-weighted sequence), PWI MRI, and MET PET at the time point of suspected tumor recurrence. PWI MRI shows a perfusion deficit, areas with increased relative cerebral blood volume (rCBV) are not present. In contrast, MET PET is suggestive for radiation-induced changes (mean tumor-to-brain ratio, 1.40).

recurrence from radiation-induced changes, a stereotactic biopsy was performed. Histological assessment revealed a radiation-induced necrosis. Tumor cells were completely absent. The diagnosis of a radiation-induced necrosis was additionally confirmed by the clinical and

radiological course. In follow-up MR imaging, the contrast enhancement vanished completely (Figure 1).

Fifty-eight months after SRS of the left frontal metastasis, we observed a recurrence of contrast enhancement (tumor volume, 1.8 ml) within the area of applied irradiation

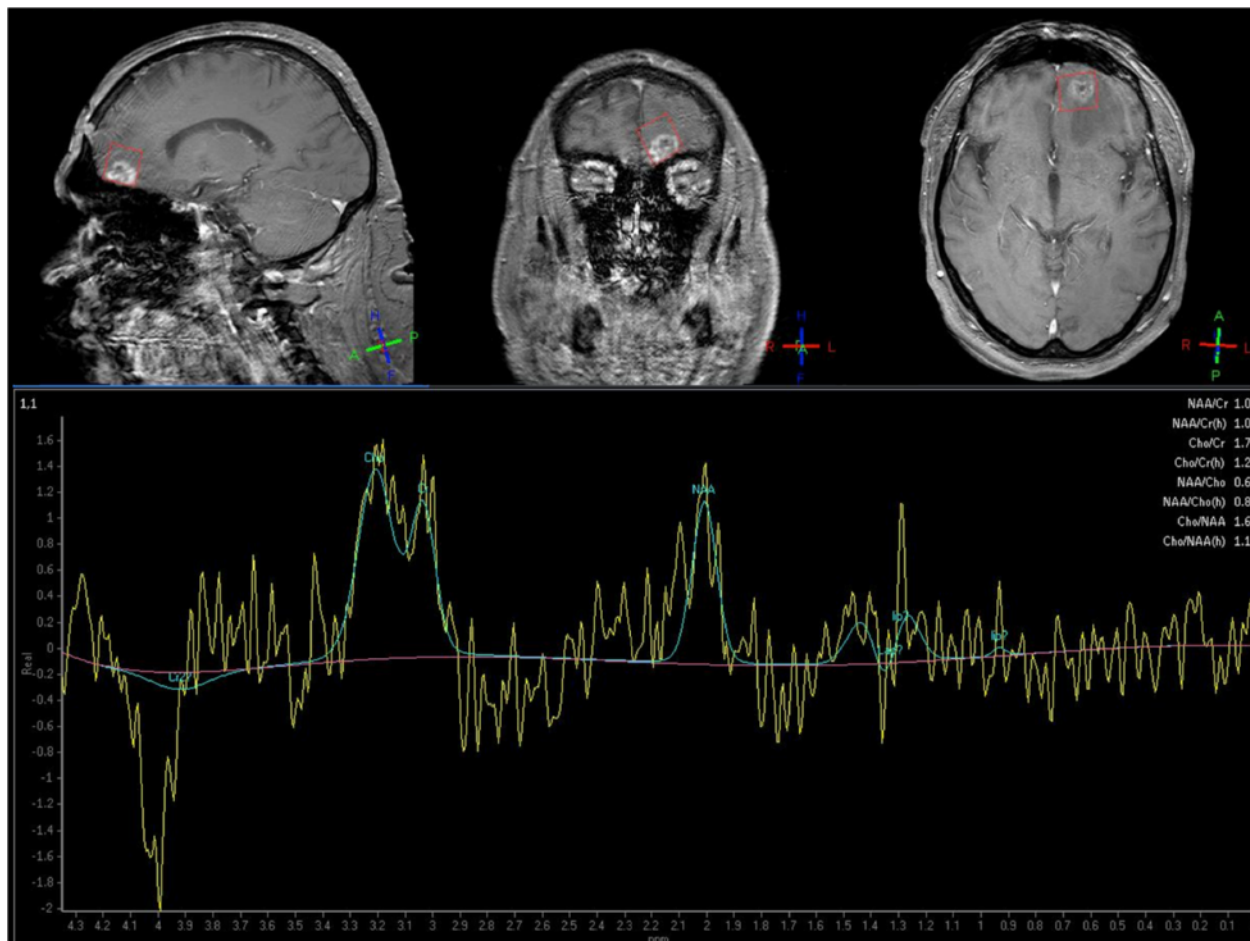


Figure 3 Spectroscopic profile of the left frontal lesion (red voxel), altered by artifacts.

accompanied by a hyperintensity in the FLAIR-weighted MRI (Figure 1, 2). For further evaluation of this lesion, PWI MRI, MRS, and ^{11}C -methyl-L-methionine (MET) PET was performed.

In detail, PWI MRI revealed a perfusion deficit with low mean transit time and low relative cerebral blood volume (rCBV), which was corresponding to the signal alterations on the FLAIR-weighted image (Figure 2). Areas with increased rCBV, however, could not be clearly identified within the perfusion deficit. Furthermore, diagnostic information of MRS was heavily influenced by artifacts and was therefore inconclusive (Figure 3). It should be noted that most probably due to the patient's unusual large frontal sinus adjacent to the left frontal lesion, the diagnostic value of PWI MRI, and MRS might have been negatively influenced. MET PET imaging of the suspicious left frontal lesion revealed a mean tumor-to-brain ratio of 1.40 (normalized against the gray matter of the unaffected right frontal cortex) (Figure 2). It has been previously demonstrated that a mean threshold of at least 1.41 or 1.42 has the best diagnostic accuracy for the identification of recurrent brain metastasis [12,13]. Accordingly, the tumor-to-brain ratio of 1.40 was suggestive for radiation-induced necrosis. Nevertheless, the ratio of 1.40 was very close to the thresholds for diagnosis of recurrent metastasis (1.41 and 1.42, respectively) and MR imaging findings were not helpful. We therefore decided to perform a stereotactic biopsy for histological evaluation of the suspicious left frontal lesion. According to our previously reported protocol, a stereotactic ^{125}I brachytherapy (SBT) after intraoperative verification of tumor within the same surgical procedure was planned [6,14]. Intraoperatively, histological findings were consistent with radiation necrosis (Figure 4). Thus, SBT was not performed.

Follow-up MRI after 74 months showed a decrease of contrast enhancement (Figure 1). During the complete course of the disease, the patient was asymptomatic and had no neurological deficit. Furthermore, there were no clinical signs for systemic disease progression.

Conclusions

To date, contrast-enhanced structural MRI is the method of choice for follow-up of brain metastasis after treatment with SRS. However, in many patients, the differentiation of local recurrent brain metastasis from radiation-induced changes after SRS using contrast-enhanced MRI is difficult [15]. This problem necessitates alternative diagnostic methods for the follow-up and management of patients with recurrent brain metastases. Various imaging techniques such as PET, single-photon emission computed tomography (SPECT), MRS, and PWI have been used for differentiation of local tumor recurrence from radiation-induced changes (Table 1).

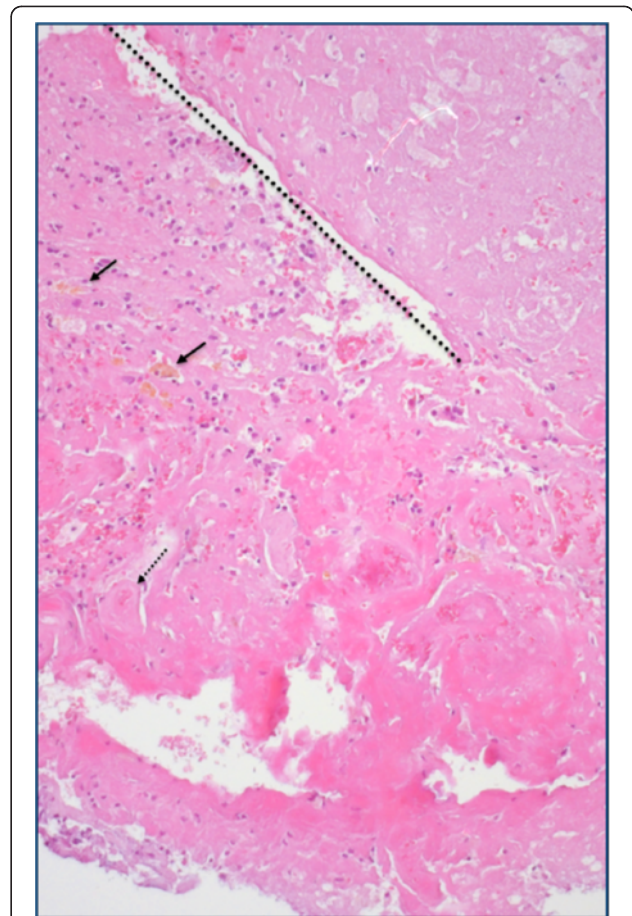


Figure 4 Histology of left frontal tissue, obtained by stereotactic biopsy. Hyalinized radiation-induced necrosis, H&E staining, original magnification x100. Within the necrosis, blood vessels with thickened walls and obturated lumen (dotted arrow). On the left side, vital brain parenchyma with hemosiderin deposits (arrows).

PET using 2-deoxy- ^{18}F fluoro-D-glucose (FDG) [26] has been considered for the evaluation of brain metastasis, but the high physiologic glucose consumption of the brain and the variable glucose uptake of metastatic brain lesions limit its use. For example, in a study of 48 patients with lung cancer and brain metastasis, 33% of the brain lesions could not be clearly detected by FDG PET, although all primary lung lesions were hypermetabolic [27]. Furthermore, another limitation is a small lesion size [28]. Another study demonstrated that after SRS, FDG PET is not sensitive enough to differentiate brain metastases from radiation necrosis [20]. Additionally, the diagnostic accuracy of FDG PET may be negatively influenced since it could be observed that FDG uptake is also seen in inflammatory changes [29]. A recent study indicated that dual-phase imaging may improve the diagnostic accuracy of FDG PET for the differentiation of recurrent brain metastasis from radiation necrosis

Table 1 Diagnostic value of several imaging techniques in differentiating tumor recurrence from radiation necrosis after SRS for brain metastases

Study	Imaging modality	Number of patients (metastasis)	Treatment (n)	Interval SRS – Imaging (mo)	Number of recurrent metastasis / radiation-induced changes	Confirmation of diagnosis (n)		Sensitivity	Specificity
						Histo	FU		
Serizawa et al., 2005 [16]	²⁰¹ Thallium SPECT	70 (72)	SRS	7	30/42	10	62	90%	91%
Tsuyuguchi et al., 2003 [12]	MET PET	21 (21)	SRS	12	9/12	11	10	78%	100%
Terakawa et al., 2008 [13]	MET PET	51 (56)	SRS (47), EBI (4)	17	24/32	56	0	79%	75%
Galldiks et al., 2012 [17]	FET PET	31 (40)	SRS (16), SRS+WBRT (15)	12	19/21	11	29	95%	91%
Horky et al., 2010 [18]	Dual phase FDG PET	25 (27)	SRS/EBI (22), CTx (3)	18,15	n.r.	16	11	95%	100%
Chao et al., 2001 [19]	FDG PET	32 (36)	SRS	6	18/18	n.r.	n.r.	65%	80%
	FDG PET + MRI	32 (36)	SRS	6	18/18	n.r.	n.r.	86%	80%
Belohlavek et al., 2003 [20]	FDG PET	25 (57)	SRS	8	8/49	3	54	75%	94%
Chernov et al., 2005 [21]	FDG PET	9 (9)	SRS	11	4/5	5	4	50%	80%
	Single voxel MRS	9 (9)	SRS	11	4/5	5	4	50%	100%
	Multi voxel MRS	9 (9)	SRS	11	4/5	5	4	100%	100%
Kimura et al., 2003 [22]	Single voxel MRS	36 (43)	SRS	6-12	0/6	5	1	100%*	
Barajas et al., 2009 [23]	PWI	27 (30)	SRS	10	20/10	22	8	96%	100%
Hoefnagels et al., 2009 [4]	PWI	31 (34)	SRS	8/9	20/14	11	23	70%	100%
Mitsuya et al., 2010 [24]	PWI	27 (28)	SRS	12	7/21	2	26	100%	95%
Truong et al., 2006 [25]	PWI	12**	SRS	9	10/2	12	0	PPV 80%	
	Multi voxel MRS	9***	SRS	9	7/2	9	0	PPV 83%	

*Radiation necrosis was correctly diagnosed in all cases; **3 patients were excluded due to susceptibility artifacts; ***2 patients were excluded.

CTx = chemotherapy; PWI = perfusion weighted imaging; EBI = external beam irradiation; FDG = 2-deoxy-[¹⁸F]fluoro-D-glucose; FET = O-(2-¹⁸F-Fluoroethyl)-L-tyrosine; FLAIR = fluid attenuated inversion recovery; FU = confirmation of diagnosis by (serial) follow-up MRI; Histo = diagnosis proven by histological confirmation; MET = ¹¹C-methyl-L-methionine; MRS = magnetic resonance spectroscopy; n.r. = not reported; PPV = positive predictive value for tumor recurrence; SPECT = single photon emission computed tomography; SRS = stereotactic radiosurgery; WBRT = whole brain radiation therapy.

[18]. A relevant limitation of that approach is the long time interval between PET scans (range, 2–5.7 h).

Amino acid tracers are particularly useful for PET in Neurooncology because of a high amino acid uptake in tumor tissue both in metastasis and gliomas [30] together with low uptake in normal brain tissue, resulting in an enhanced tumor-to-background contrast. Previously, it has been shown that PET using MET may be effective in differentiating recurrent metastatic brain tumor from radiation-induced changes (at a threshold of 1.42, mean tumor-to-brain ratio) with a sensitivity of 78% and a specificity of 100%, respectively [12]. In a subsequent study [13], these findings could be confirmed at a similar threshold (1.41, mean tumor-to-brain ratio), at least in part, with similar sensitivity (79%) but with lower specificity (75%). Following these thresholds (1.41 and 1.42, respectively), the mean tumor-to-brain ratio of 1.40 of the left frontal lesion in our patient was suggestive for radiation-induced changes. However, this ratio was very close to the reported thresholds for diagnosis of recurrent metastasis and might therefore cause several concerns regarding the correct diagnosis. For example, the calculated mean tumor-to-brain ratio may slightly vary depending on the choice of the background region-of-interest (ROI). It should be noted that the use of MET remains restricted to centers with an on-site cyclotron because of the short half-life of the ^{11}C isotope (20 min). In contrast, amino acids labeled with ^{18}F (half-life, 110 min) such as O-(2- ^{18}F -fluoroethyl)-L-tyrosine (FET) allow a more widespread use. In a recent study it could be demonstrated that the combination of the mean tumor-to-brain ratio and FET kinetics helps to differentiate recurrent brain metastasis tumor from radiation-induced changes with a high diagnostic accuracy [17].

A study with ^{201}Tl Thallium SPECT provided the correct diagnosis of recurrent brain metastasis with a sensitivity of 90% and specificity of 92%, respectively [16]. However, the spatial resolution of SPECT is considerably lower than that of PET, which limits the use of this technique in clinical practice.

Beyond structural MR imaging, advanced MRI techniques such as PWI and MRS can be used successfully in order to differentiate recurrent brain metastasis from radiation-induced changes. Especially PWI can be easily incorporated into daily practice since the acquisition time is short (less than 10 minutes) [31]. In this context, the diagnostic value of PWI and MRS has been investigated by several studies [4,23-25,32]. In these studies, the sensitivity of PWI MRI ranged from 70–100% and the specificity from 95–100%, respectively. Chernov and colleagues reported a sensitivity and specificity of 100% using MRS in pilot series of 9 patients [21]. However, it should be noted that these promising results of studies with advanced MRI techniques are mostly based on a

limited number of patients investigated predominantly in a retrospective setting, without histological confirmation of the diagnosis.

In addition, all of the latter mentioned MR-based techniques can be influenced negatively by technical limitations. For example, a small size or irregular shape of the lesion might affect negatively the data analysis. Inappropriate ROI placement (e.g., in heterogeneous lesions with cystic and necrotic regions) and partial volume effects may alter results. Furthermore, susceptibility artifacts due to air-containing and bony structures (e.g., sinuses, temporal bone) adjacent to the lesion may hinder data interpretation and analysis [25,33]. Additionally, for assessment of small lesions (< 2 ml) using MRS, the signal-to-noise ratio becomes a limiting factor requiring examination times inapplicable for clinical use [34]. In a previous study, the rate of unusable MRS examinations due to motion artifacts was about 7% [35].

Regarding the reported patient, susceptibility artifacts and the small lesion size most probably caused the inconclusive findings of PWI MRI and MRS. In contrast, MET PET indicated radiation-induced changes within its limits of the previously described diagnostic accuracy. Ultimately, a stereotactic biopsy demonstrated clearly the absence of vital tumor. Stereotactic biopsy is a highly reliable diagnostic method for differentiating local tumor recurrence from radiation necrosis. Two prospective studies demonstrated the usefulness of this procedure to deliver conclusive results with a high diagnostic accuracy of more than 98% and a low risk (< 1%) of permanent complications [36,37]. Although this procedure is restricted to specialized institutions, stereotactic biopsies can be considered as method of choice, especially when diagnostic information derived from noninvasive imaging techniques are inconclusive.

In conclusion, artifacts and technical limitations of advanced MRI techniques can be a relevant problem and, furthermore, comparative studies are needed to investigate the relationship, diagnostic performance, and complementary character of advanced MRI techniques and amino acid PET. Results of multimodal imaging studies should be evaluated by stereotactic biopsy.

Consent

Written informed consent was obtained from the patient for publication of this case report and any accompanying images. A copy of the written consent is available for review by the Editor-in-Chief of this journal.

Competing interests

All authors disclose any financial and non-financial competing interests.

Authors' contributions

PK, NG, and MIR participated in the conception, organization and execution of the present work, data analysis and interpretation, and the writing and critical review of the manuscript drafts. FD participated in MRI data

acquisition and procession, and MRI data interpretation and the critical review of manuscript drafts. TB participated in the interpretation of neuropathological findings and the critical review of manuscript drafts. MS and NG participated in PET data acquisition and procession, and PET data interpretation and the critical review of manuscript drafts. MK participated in the critical review of manuscript drafts. All authors read and approved the final manuscript.

Author details

¹Department for Stereotaxy and Functional Neurosurgery, University of Cologne, Kerpener Str. 62, 50937 Cologne, Germany. ²Department of Radiology, University of Cologne, Cologne, Germany. ³Department of Neuropathology, University of Cologne, Cologne, Germany. ⁴Department of Nuclear Medicine, University of Cologne, Cologne, Germany. ⁵Department of Radiation Oncology, University of Cologne, Cologne, Germany. ⁶Department of Neurology, University of Cologne, Cologne, Germany. ⁷Institute of Neuroscience and Medicine, Research Center Jülich, Jülich, Germany.

Received: 5 November 2012 Accepted: 23 February 2013

Published: 6 March 2013

References

1. Fokas E, Henzel M, Engenhardt-Cabillic R: **A comparison of radiotherapy with radiotherapy plus surgery for brain metastases from urinary bladder cancer: analysis of 62 patients.** *Strahlenther Onkol* 2010, **186**:565–571.
2. Suh JH: **Stereotactic radiosurgery for the management of brain metastases.** *N Engl J Med* 2010, **362**:1119–1127.
3. Meisner J, Meyer A, Polivka B, Karstens JH, Bremer M: **Outcome of moderately dosed radiosurgery for limited brain metastases. Report of a single-center experience.** *Strahlenther Onkol* 2010, **186**:76–81.
4. Hoefnagels FW, Lagerwaard FJ, Sanchez E, Haasbeek CJ, Knol DL, Slotman BJ, Vandertop WP: **Radiological progression of cerebral metastases after radiosurgery: assessment of perfusion MRI for differentiating between necrosis and recurrence.** *J Neurol* 2009, **256**:878–887.
5. Plowman PN: **Stereotactic radiosurgery. VIII. The classification of postradiation reactions.** *Br J Neurosurg* 1999, **13**:256–264.
6. Ruge MI, Kickingeder P, Grau S, Hoevels M, Treuer H, Sturm V: **Stereotactic biopsy combined with stereotactic (125)iodine brachytherapy for diagnosis and treatment of locally recurrent single brain metastases.** *J Neurooncol* 2011 Oct, **105**(1):109–18. Epub 2011 Apr 11.
7. Peterson AM, Meltzer CC, Evanson EJ, Flickinger JC, Kondziolka D: **MR imaging response of brain metastases after gamma knife stereotactic radiosurgery.** *Radiology* 1999, **211**:807–814.
8. Huber PE, Hawighorst H, Fuss M, van Kaick G, Wannemacher MF, Debus J: **Transient enlargement of contrast uptake on MRI after linear accelerator (linac) stereotactic radiosurgery for brain metastases.** *Int J Radiat Oncol Biol Phys* 2001, **49**:1339–1349.
9. Kocher M, Maarouf M, Bendel M, Voges J, Muller RP, Sturm V: **Linac radiosurgery versus whole brain radiotherapy for brain metastases. A survival comparison based on the RTOG recursive partitioning analysis.** *Strahlenther Onkol* 2004, **180**:263–267.
10. Ruge MI, Kocher M, Maarouf M, Hamisch C, Treuer H, Voges J, Sturm V: **Comparison of stereotactic brachytherapy (125 iodine seeds) with stereotactic radiosurgery (LINAC) for the treatment of singular cerebral metastases.** *Strahlenther Onkol* 2011, **187**:7–14.
11. Macdonald DR, Cascino TL, Schold SC Jr, Cairncross JG: **Response criteria for phase II studies of supratentorial malignant glioma.** *J Clin Oncol* 1990, **8**:1277–1280.
12. Tsuyuguchi N, Sunada I, Iwai Y, Yamanaka K, Tanaka K, Takami T, Otsuka Y, Sakamoto S, Ohata K, Goto T, Hara M: **Methionine positron emission tomography of recurrent metastatic brain tumor and radiation necrosis after stereotactic radiosurgery: is a differential diagnosis possible?** *J Neurosurg* 2003, **98**:1056–1064.
13. Terakawa Y, Tsuyuguchi N, Iwai Y, Yamanaka K, Higashiyama S, Takami T, Ohata K: **Diagnostic accuracy of 11C-methionine PET for differentiation of recurrent brain tumors from radiation necrosis after radiotherapy.** *J Nucl Med* 2008, **49**:694–699.
14. Ruge MI, Suchorska B, Maarouf M, Runge M, Treuer H, Voges J, Sturm V: **Stereotactic 125iodine brachytherapy for the treatment of singular brain metastases: closing a gap?** *Neurosurgery* 2011, **68**:1209–1218. discussion 1218–1209.
15. Doms GC, Hecht S, Brant-Zawadzki M, Berthiaume Y, Norman D, Newton TH: **Brain radiation lesions: MR imaging.** *Radiology* 1986, **158**:149–155.
16. Serizawa T, Saeki N, Higuchi Y, Ono J, Matsuda S, Sato M, Yanagisawa M, Iuchi T, Nagano O, Yamaura A: **Diagnostic value of thallium-201 chloride single-photon emission computerized tomography in differentiating tumor recurrence from radiation injury after gamma knife surgery for metastatic brain tumors.** *J Neurosurg* 2005, **102**(Suppl):266–271.
17. Galdiks N, Stoffels G, Filss CP, Piroth MD, Sabel M, Ruge MI, Herzog H, Shah NJ, Fink GR, Coenen HH, Langen KJ: **Role of O-(2-18F-Fluoroethyl)-L-Tyrosine PET for Differentiation of Local Recurrent Brain Metastasis from Radiation Necrosis.** *J Nucl Med* 2012, **53**:1367–1374.
18. Horky LL, Hsiao EM, Weiss SE, Drappatz J, Gerbaudo VH: **Dual phase FDG-PET imaging of brain metastases provides superior assessment of recurrence versus post-treatment necrosis.** *J Neurooncol* 2011, **103**:137–146.
19. Chao ST, Suh JH, Raja S, Lee SY, Barnett G: **The sensitivity and specificity of FDG PET in distinguishing recurrent brain tumor from radionecrosis in patients treated with stereotactic radiosurgery.** *Int J Cancer* 2001, **96**:191–197.
20. Belohlavek O, Simonova G, Kantorova I, Novotny J Jr, Liscak R: **Brain metastases after stereotactic radiosurgery using the Leksell gamma knife: can FDG PET help to differentiate radionecrosis from tumour progression?** *Eur J Nucl Med Mol Imag* 2003, **30**:96–100.
21. Chernov M, Hayashi M, Izawa M, Ochiai T, Usukura M, Abe K, Ono Y, Muragaki Y, Kubo O, Hori T, Takakura K: **Differentiation of the radiation-induced necrosis and tumor recurrence after gamma knife radiosurgery for brain metastases: importance of multi-voxel proton MRS.** *Minim Invasive Neurosurg* 2005, **48**:228–234.
22. Kimura T, Sako K, Tanaka K, Gotoh T, Yoshida H, Aburano T, Tanaka T, Arai H, Nakada T: **Evaluation of the response of metastatic brain tumors to stereotactic radiosurgery by proton magnetic resonance spectroscopy, 201TlCl single-photon emission computerized tomography, and gadolinium-enhanced magnetic resonance imaging.** *J Neurosurg* 2004, **100**:835–841.
23. Barajas RF, Chang JS, Sneed PK, Segal MR, McDermott MW, Cha S: **Distinguishing recurrent intra-axial metastatic tumor from radiation necrosis following gamma knife radiosurgery using dynamic susceptibility-weighted contrast-enhanced perfusion MR imaging.** *AJNR Am J Neuroradiol* 2009, **30**:367–372.
24. Mitsuya K, Nakasu Y, Horiguchi S, Harada H, Nishimura T, Bando E, Okawa H, Furukawa Y, Hirai T, Endo M: **Perfusion weighted magnetic resonance imaging to distinguish the recurrence of metastatic brain tumors from radiation necrosis after stereotactic radiosurgery.** *J Neurooncol* 2010, **99**:81–88.
25. Truong MT, St Clair EG, Donahue BR, Rush SC, Miller DC, Formenti SC, Knopp EA, Han K, Golfinos JG: **Results of surgical resection for progression of brain metastases previously treated by gamma knife radiosurgery.** *Neurosurgery* 2006, **59**:86–97. discussion 86–97.
26. Di Chiro G, DeLaPaz RL, Brooks RA, Sokoloff L, Kornblith PL, Smith BH, Patronas NJ, Kufra CV, Kessler RM, Johnston GS, et al: **Glucose utilization of cerebral gliomas measured by [18F]fluorodeoxyglucose and positron emission tomography.** *Neurology* 1982, **32**:1323–1329.
27. Lee HY, Chung JK, Jeong JM, Lee DS, Kim DG, Jung HW, Lee MC: **Comparison of FDG-PET findings of brain metastasis from non-small-cell lung cancer and small-cell lung cancer.** *Ann Nucl Med* 2008, **22**:281–286.
28. Thompson TP, Lunsford LD, Kondziolka D: **Distinguishing recurrent tumor and radiation necrosis with positron emission tomography versus stereotactic biopsy.** *Stereotact Funct Neurosurg* 1999, **73**:9–14.
29. Chen W: **Clinical applications of PET in brain tumors.** *J Nucl Med* 2007, **48**:1468–1481.
30. Grosu AL, Astner ST, Riedel E, Nieder C, Wiedenmann N, Heinemann F, Schwaiger M, Molls M, Wester HJ, Weber WA: **An interindividual comparison of O-(2- [(18)F]Fluoroethyl)-L-Tyrosine (FET)- and L-[Methyl-(11)C]Methionine (MET)-PET in patients with brain gliomas and metastases.** *Int J Radiat Oncol Biol Phys* 2011, **81**:1049–1058.
31. Dhermain FG, Hau P, Lanfermann H, Jacobs AH, van den Bent MJ: **Advanced MRI and PET imaging for assessment of treatment response in patients with gliomas.** *Lancet Neurol* 2010, **9**:906–920.
32. Kimura T, Sako K, Tohyama Y, Aizawa S, Yoshida H, Aburano T, Tanaka K, Tanaka T: **Diagnosis and treatment of progressive space-occupying radiation necrosis following stereotactic radiosurgery for brain metastasis: value of proton magnetic resonance spectroscopy.** *Acta Neurochir (Wien)* 2003, **145**:557–564. discussion 564.

33. Haroon HA, Patankar TF, Zhu XP, Li KL, Thacker NA, Scott MJ, Jackson A: **Comparison of cerebral blood volume maps generated from T2* and T1 weighted MRI data in intra-axial cerebral tumours.** *Br J Radiol* 2007, **80**:161–168.
34. Lanfermann H, Herminghaus S, Pilatus U, Hattingen E, Zanella F: **Value of 1H-MR-spectroscopy in differential diagnosis and grading of intracranial tumours.** *Dtsch Arztebl* 2004, **101**:A649–A655.
35. Moller-Hartmann W, Herminghaus S, Krings T, Marquardt G, Lanfermann H, Pilatus U, Zanella FE: **Clinical application of proton magnetic resonance spectroscopy in the diagnosis of intracranial mass lesions.** *Neuroradiology* 2002, **44**:371–381.
36. Heper AO, Erden E, Savas A, Ceyhan K, Erden I, Akyar S, Kanpolat Y: **An analysis of stereotactic biopsy of brain tumors and nonneoplastic lesions: a prospective clinicopathologic study.** *Surg Neurol* 2005, **64**(Suppl 2):S82–S88.
37. Kreth FW, Muacevic A, Medele R, Bise K, Meyer T, Reulen HJ: **The risk of haemorrhage after image guided stereotactic biopsy of intra-axial brain tumours—a prospective study.** *Acta Neurochir (Wien)* 2001, **143**:539–545. discussion 545–536.

doi:10.1186/1748-717X-8-52

Cite this article as: Kickingeder *et al.*: Differentiation of local tumor recurrence from radiation-induced changes after stereotactic radiosurgery for treatment of brain metastasis: case report and review of the literature. *Radiation Oncology* 2013 **8**:52.

Submit your next manuscript to BioMed Central and take full advantage of:

- Convenient online submission
- Thorough peer review
- No space constraints or color figure charges
- Immediate publication on acceptance
- Inclusion in PubMed, CAS, Scopus and Google Scholar
- Research which is freely available for redistribution

Submit your manuscript at
www.biomedcentral.com/submit

