

This is a repository copy of *Cytotoxic (cis,cis-1,3,5-triaminocyclohexane)ruthenium(II)-diphosphine complexes; evidence for covalent binding and intercalation with DNA.*

White Rose Research Online URL for this paper:  
<https://eprints.whiterose.ac.uk/168329/>

Version: Published Version

---

**Article:**

Wise, Dan E, Gamble, Aimee Joanna, Arkawazi, Sham et al. (9 more authors) (2020) Cytotoxic (cis,cis-1,3,5-triaminocyclohexane)ruthenium(II)-diphosphine complexes; evidence for covalent binding and intercalation with DNA. Dalton Transactions. pp. 1-12. ISSN 1477-9234

<https://doi.org/10.1039/d0dt02612c>

---

**Reuse**

This article is distributed under the terms of the Creative Commons Attribution (CC BY) licence. This licence allows you to distribute, remix, tweak, and build upon the work, even commercially, as long as you credit the authors for the original work. More information and the full terms of the licence here:  
<https://creativecommons.org/licenses/>

**Takedown**

If you consider content in White Rose Research Online to be in breach of UK law, please notify us by emailing [eprints@whiterose.ac.uk](mailto:eprints@whiterose.ac.uk) including the URL of the record and the reason for the withdrawal request.

Cite this: *Dalton Trans.*, 2020, **49**, 15219

## Cytotoxic (*cis,cis*-1,3,5-triaminocyclohexane) ruthenium(II)-diphosphine complexes; evidence for covalent binding *and* intercalation with DNA†

Dan E. Wise,<sup>a</sup> Aimee J. Gamble,<sup>b</sup> Sham W. Arkawazi,<sup>†</sup> Paul H. Walton,<sup>b</sup> M. Carmen Galan,<sup>a</sup> Michael P. O'Hagan,<sup>a</sup> Karen G. Hogg,<sup>c</sup> Joanne L. Marrison,<sup>c</sup> Peter J. O'Toole,<sup>c</sup> Hazel A. Sparkes,<sup>a</sup> Jason M. Lynam<sup>\*a</sup> and Paul G. Pringle<sup>‡a</sup>

We report cytotoxic ruthenium(II) complexes of the general formula  $[\text{RuCl}(\text{cis-tach})(\text{diphosphine})]^+$  (*cis-tach* = *cis-cis*-1,3,5-triaminocyclohexane) that have been characterised by  $^1\text{H}$ ,  $^{13}\text{C}$  and  $^{31}\text{P}\{^1\text{H}\}$  NMR spectroscopy, mass spectrometry, X-ray crystallography and elemental analysis. The kinetics of aquation and stability of the active species have been studied, showing that the chlorido ligand is substituted by water at 298 K with first order rate constants of  $10^{-2}$ – $10^{-3}$  s $^{-1}$ , ideal for potential clinical use as anti-tumour agents. Strong interactions with biologically relevant duplex and quadruplex DNA models correlate with the activity observed with A549, A2780 and 293T cell lines, and the degree of activity was found to be sensitive to the chelating diphosphine ligand. A label-free ptychographic cell imaging technique recorded cell death processes over 4 days. The Ru(II) *cis-tach* diphosphine complexes exhibit anti-proliferative effects, in some cases outperforming cisplatin and other cytotoxic ruthenium complexes.

Received 24th July 2020,  
Accepted 16th September 2020

DOI: 10.1039/d0dt02612c

rsc.li/dalton

## Introduction

Ruthenium complexes have potential as alternatives to platinum-based chemotherapy in the treatment of cancers. Compounds **A–G** in Fig. 1 show the structural diversity of Ru complexes whose anti-cancer activity has been investigated.<sup>1</sup> The ruthenium(III) complexes, NAMI-A (**A**) and KP1019 (**B**) have undergone clinical trials.<sup>2–6</sup> More recently, Sadler<sup>7–11</sup> and Dyson<sup>12–17</sup> have reported piano-stool ( $\eta^6$ -arene)ruthenium(II) compounds that are cytotoxic *in vitro* and *in vivo*. Notably, the chelate complex  $[\text{RuCl}(\eta^6\text{-biphenyl})(\text{H}_2\text{NCH}_2\text{CH}_2\text{NH}_2)]\text{PF}_6$  (**C**) has been shown to target DNA directly, with the DNA-complex adduct stabilised by hydrogen bonds between the diamine ligand and the O6 of guanine.<sup>18</sup> It has been shown that

$[\text{RuCl}_2(p\text{-cymene})(\text{PTA})]$  (**D**) is active *in vivo* against secondary metastases.<sup>13</sup> In addition, due to their tunable photophysical properties, many Ru(II) polypyridyl complexes have been developed for use in photodynamic therapy (PDT) and photochemotherapy (PCT).<sup>19–22</sup> The first example of this class of complexes to have entered human clinical trials was TLD1433 (**E**) which contains a terthienyl chromophore.<sup>19,23</sup>

The seminal work on the anti-cancer properties of ( $\eta^6$ -arene)Ru complexes has spurred the investigation of many coordination complex analogues of organometallic piano-stool complexes. For example, Alessio *et al.* replaced the arene with [9]aneS<sub>3</sub> to give complex **F** with minimal loss of biological activity compared to its organometallic analogues.<sup>24</sup> Furthermore, Ru-diphosphine complexes such as  $[(\kappa^3\text{-tpm})\text{RuCl}(\text{diphos})]\text{PF}_6$  (**G**) showed activity *in vitro*.<sup>25</sup> However, despite the variety of facially capping ligands available which could be used to modulate activity, this aspect of the complexes has received far less attention than modification of the other ancillary ligands on the metal.<sup>26–28</sup> From a biological perspective, the narrow range of face-capping ligands that have been used limits the rate and extent of the substitution of the halido ligands by water. This rate is known to correlate with *in vitro* activity,<sup>8,29,30</sup> and expanding its range is thus a critical factor in maximising the clinical potential of ruthenium complexes in the treatment of cancer.

<sup>a</sup>School of Chemistry, University of Bristol, Cantock's Close, Bristol, BS8 1TS, UK.  
E-mail: paul.pringle@bristol.ac.uk

<sup>b</sup>Department of Chemistry, University of York, Heslington, York, YO10 5DD, UK.  
E-mail: jason.lynam@york.ac.uk

<sup>c</sup>Imaging and Cytometry Laboratory, Bioscience Technology Facility, Department of Biology, University of York, UK

† Electronic supplementary information (ESI) available: Experimental, characterisation, X-ray crystallography and detailed assay procedures. Table S3, CCDC 1959465. For ESI and crystallographic data in CIF or other electronic format see DOI: 10.1039/d0dt02612c

‡ Current address, Department of Chemistry, University of Garmian, Kurdistan Region, Iraq.



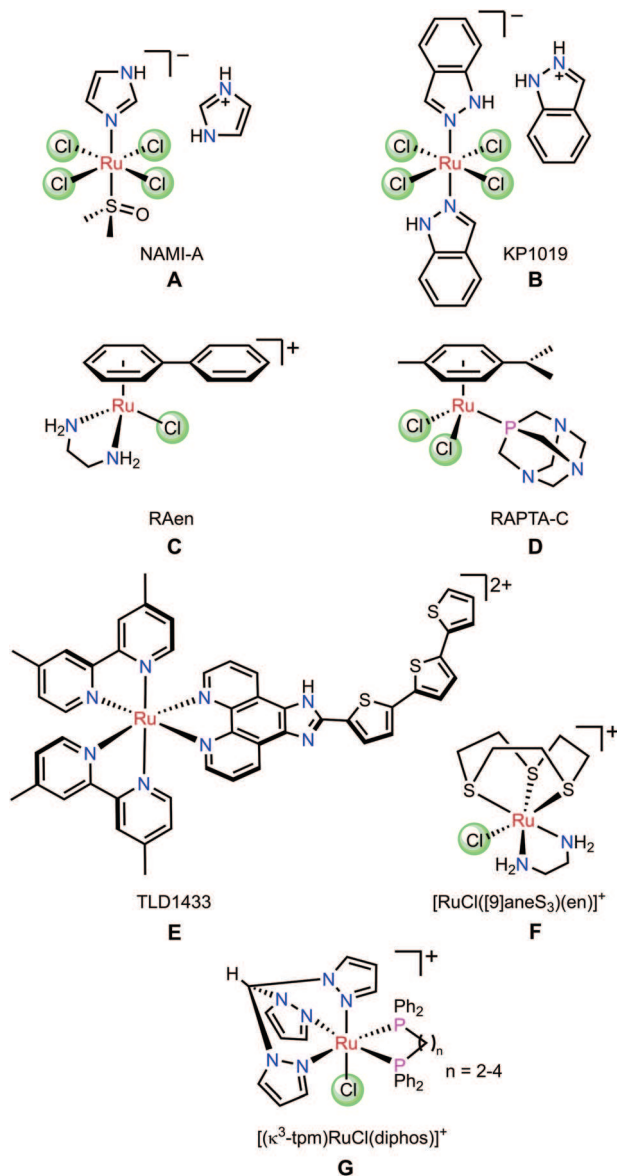


Fig. 1 Cytotoxic Ru complexes.

The ligand *cis-tach* (*cis-cis*-1,3,5-triaminocyclohexane) forms face-capping complexes with many transition metals including ruthenium(II).<sup>31–35</sup> The labile complex  $[\text{RuCl}(\text{dms}\text{-}\text{S})_2(\text{cis-tach})]\text{Cl}$  (**1**) is the precursor to *N,N*-chelate complexes **2a–c** and *P,P*-chelate complexes **3a–f** (Scheme 1) that have been previously reported.<sup>35</sup> The influence of the *cis-tach* ligand was evaluated by comparison of the structural data with those for  $(\eta^6\text{-arene})\text{Ru}$  complexes. It has previously been demonstrated<sup>35,36</sup> that *cis-tach* is a strong  $\sigma$ -donor, as would be expected due to the three nitrogen atoms coordinated to the metal. For instance, reaction of the DMSO complex **1** with diamines yields dicationic complexes in which one coordinated DMSO is retained, whereas **1** with diphosphines gave complexes with one chlorido ligand retained (Scheme 1). This difference in behaviour was rationalised on the basis of the different bonding characteristics of diamines and diphosphines.

The electron-richness of the Ru created by the *cis-tach*, is augmented by the diamine  $\sigma$ -donors which leads to strong  $\pi$ -back-donation to the DMSO ligand, strengthening the Ru–S interaction. By contrast, diphosphines, which are better  $\pi$ -acceptors than DMSO, favour the coordination of chloride, which is presumed to be a  $\pi$ -donor. Importantly, for the use of these complexes as anti-cancer agents, it was reasoned that the Ru(*cis-tach*)(diphos) moiety may promote the rapid aquation of the Ru–Cl bond which might then result in enhanced *in vitro* activity.<sup>31,37</sup>

In addition to their potential as effective anti-cancer agents, Ru complexes of *cis-tach* have other features that make them attractive for medicinal chemistry. For instance, the cationic Ru *cis-tach* complexes are readily prepared as chloride salts, obviating the use of the toxic  $\text{PF}_6^-$  anion in potential pharmaceuticals.<sup>38</sup> The  $\text{NH}_2$  groups of the *cis-tach* ligand enhance the water solubility of the complexes and, moreover, may strengthen any binding to DNA through hydrogen-bonding interactions, in a similar manner to the DNA binding with  $[\text{RuCl}(\eta^6\text{-biphenyl})(\text{en})]\text{PF}_6$  (**C**).<sup>8,9</sup> Finally, the cyclohexane ring provides a hydrophobic face to the complex, giving steric protection to the hydrophilic metal centre.

It is in this context that we now report a detailed investigation of the *in vitro* activity of ruthenium *cis-tach* complexes. It is shown that a range of diphosphine derivatives exhibit activity against three tumour cell lines, in some cases with potency exceeding that of cisplatin or established anti-cancer ruthenium complexes. The extended aromatic backbones of the new diphosphines **L1–L3** (Fig. 2) are shown to allow detailed insight into the nature of the biological interactions with their Ru-complexes *via* a range of physical inorganic and biological measurements including UV/visible, fluorescence and NMR spectroscopy as well as label-free cellular imaging techniques.

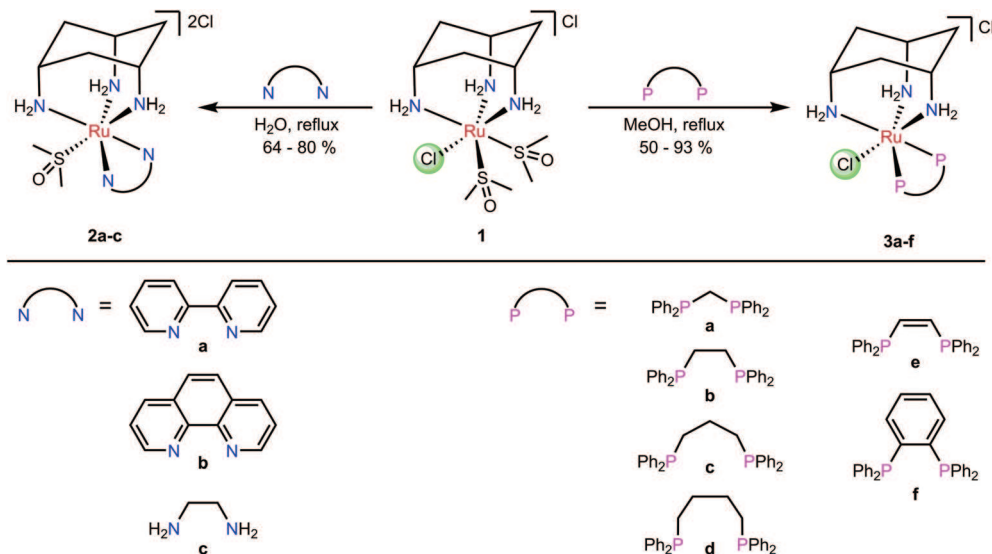
## Results and discussion

The ruthenium(II) precursor  $[\text{RuCl}(\text{dms}\text{-}\text{S})_2(\text{cis-tach})]\text{Cl}$  (**1**) and the (*cis-tach*)Ru complexes containing *N,N*-chelates (**2a–c**) and *P,P*-chelates (**3a–f**) were synthesised by previously reported methods (Scheme 1).<sup>35</sup> Our initial biological investigations described herein focused on these complexes. Notably, for the purposes of this study, the *P,P*-chelates **3a–f** are freely soluble in water up to millimolar concentrations, well in excess of that needed for therapy.

### Synthesis of diphosphine ligands and complexes

The ligands **L1–L3** were made by the routes shown in Scheme 2. The novel terthiophene diphosphine **L1** was prepared by route (i) from tetrabromothiophene using Pd-catalysed cross-coupling.<sup>45</sup> It was necessary to install the diphenylphosphine groups in **L1** sequentially to avoid the formation of a complex mixture of products. The quinoxaline diphosphine ligand, **L2** was prepared by route (ii) following a modified literature procedure.<sup>46</sup> The novel extended quinoxaline diphosphine





Scheme 1 Synthesis of complexes 2a–c and 3a–f.<sup>35</sup>

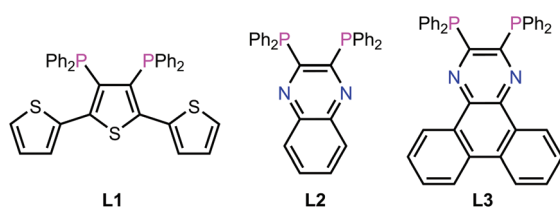


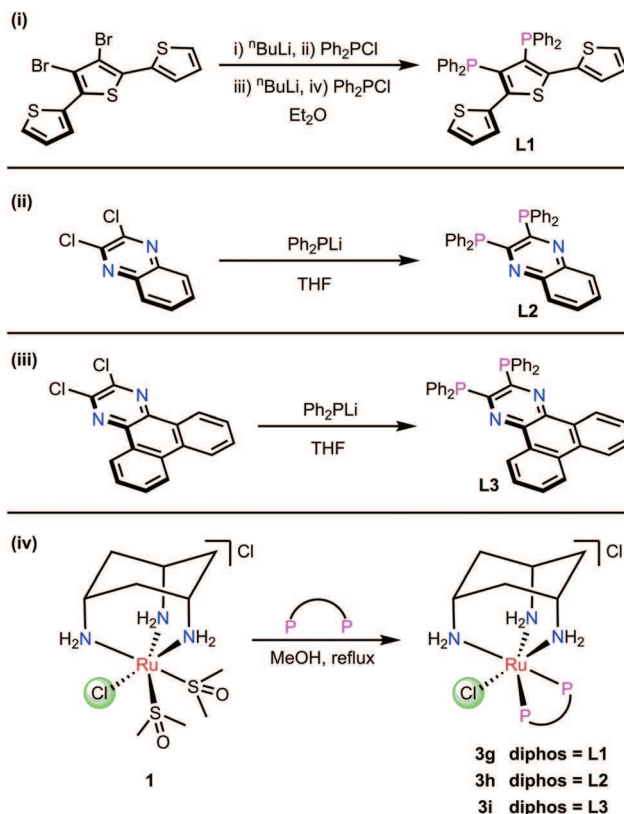
Fig. 2 Chemical structures of L1–L3 designed for this work.

sphine ligand, L3 was prepared by route (iii) from its dichloro precursor (obtained from treatment of 1,4-dihydrodibenzo[*f,h*]quinoxaline-2,3-dione with  $\text{PCl}_3$  in DMF, see ESI†).<sup>47</sup> The ruthenium complexes 3g–i were prepared in an analogous way to 3a–f (route (iv)); their formation was monitored by  $^{31}\text{P}\{\text{H}\}$  NMR spectroscopy.

The X-ray crystal structure of  $[\text{3h}]\text{PF}_6$  (Fig. 3) demonstrates that the addition of the larger, planar aromatic quinoxaline diphosphine ligand L2 does not significantly alter the geometry of the (*cis*-tach)Ru complex, as shown by the overlap with the phenylene diphosphine analogue (3f) illustrated in Fig. 3. The *cis*-tach ligand adopts the expected  $\kappa^3$ -coordination mode and there are intramolecular interactions detected between the N(4)H<sub>2</sub> and the centroids of the phenyl rings of the PPh<sub>2</sub> groups. In addition to the lipophilic cyclohexane ring, the PPh<sub>2</sub> groups provide further hydrophobicity to the complex and have the potential to interact with biomolecules (see below).

### Inhibition of the proliferation of A549 and A2780 cells

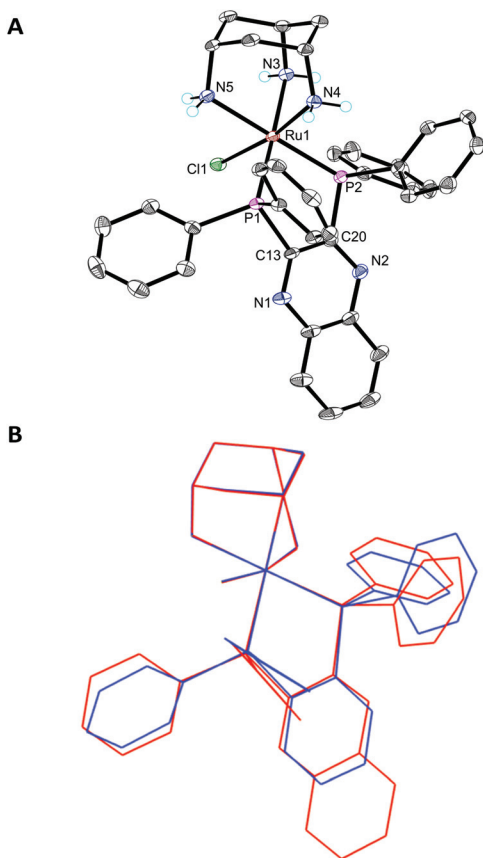
The *in vitro* growth inhibition was determined by MTT assay in two cell lines: A549 (human lung adenocarcinoma) and A2780 (human ovarian adenocarcinoma). The Ru complex of bipy (2a) in concentrations up to 300  $\mu\text{M}$ , did not inhibit the growth of tumour cells and were therefore considered inactive.



Scheme 2 (i)–(iii) Synthesis of ligands L1–L3. (iv) Synthesis of Ru complexes 3g–i.

Ruthenium mono-phosphine complexes containing an  $\eta^6$ -arene, have previously been shown<sup>11,15,39–42</sup> to be active against cancer cells. We now report clear antiproliferative activity with the *P,P*-chelates 3a–f as shown in Fig. 4 and some trends can be discerned from the data. (1) The activity generally increases

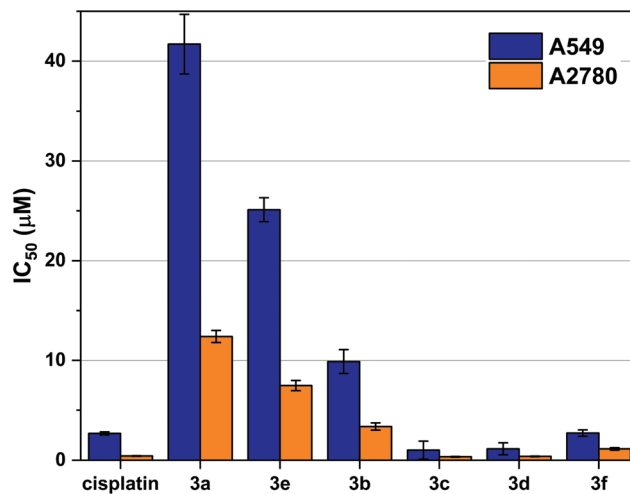




**Fig. 3** ORTEP diagram of [3h]PF<sub>6</sub> (A) and overlap with [3f]PF<sub>6</sub> (B), ellipsoids are shown at the 50% probability level and hydrogen atoms (except for the –NH<sub>2</sub> groups) and PF<sub>6</sub><sup>–</sup> are omitted for clarity. Selected bond lengths (Å) and angles (°) for [3h]PF<sub>6</sub>: Ru1–Cl1 2.4335(6), Ru1–P1 2.2857(7), Ru1–P2 2.2654(6), Ru1–N3 2.179(2), Ru1–N4 2.130(2), Ru1–N5 2.182(2); P2–Ru1–P1 84.43(2), N4–Ru1–Cl1 170.90(6), P1–Ru1–Cl1 90.11(2), P2–Ru1–Cl1 93.92(2).

with increasing chelate ring size: **3a** < **3b** < **3c** ≈ **3d**; complexes **3c** and **3d** are over twice as active as cisplatin against the A549 cell line and are equipotent to cisplatin against the A2780 cell line. (2) Complex **3b** is over twice as active as complex **3e** against both cell lines; although both **3b** and **3e** are 5-membered chelates, the more active chelate **3b** has a less rigid backbone. (3) Complex **3f** is significantly more active (by factors of *ca.* 10 and 7 against the two cell lines) than the ostensibly similar complex **3e**. Although both **3e** and **3f** are rigid, 5-membered chelates, the phenylene backbone in **3f** will make the complex more lipophilic. It was also speculated that the intercalating potential of the planar aromatic backbone present in **3f** may also be a contributing factor in its higher activity than **3e**.

To explore this hypothesis further, the (*cis*-tach)Ru complexes **3g–i** containing diphosphines with extended aromatic surfaces: terthiophenyl diphosphine (**L1**), quinoxaline diphosphine (**L2**) and dibenzo[*f,h*]quinoxaline diphosphine (**L3**) (see Fig. 2 and Scheme 2) were tested. It was postulated that these novel complexes might exhibit dual-function cytotoxicity by covalently binding to biomolecules and by intercalation with DNA in a similar way to the functioning of the cytotoxic Pt



**Fig. 4** Cell viability data in A549 and A2780 cells treated with cisplatin and **3a–f** to show influence of ligand backbone on cytotoxicity. Antiproliferative activities were determined by MTT assay and dose response curves are given in Fig. S5 and 6.† The IC<sub>50</sub> calculated is the concentration of drug required for 50% growth inhibition over a 72-hour period. The error bars represent one standard deviation from three independent experiments.

complex phenanthriplatin.<sup>43,44</sup> If this were the case, it was reasoned that **3g–i** would be expected to be more active than the first-generation Ru *cis*-tach complexes **3a–f**.

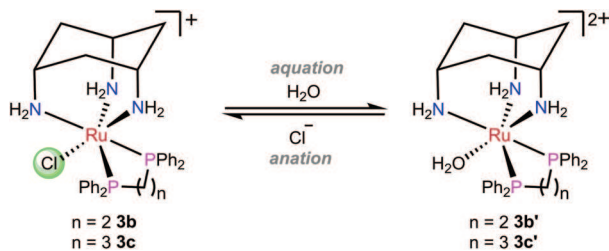
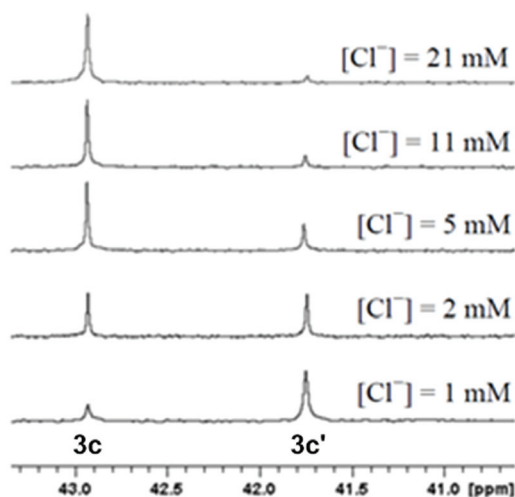
We assessed the antiproliferative activity of **3g–i** against A549 cells by a 72-hour MTT assay and found that the complexes were comparable in activity to the most active tested *P,P*-chelate complexes **3c–d** with IC<sub>50</sub> values of 1.83 ± 0.66 μM for **3g**, 11.81 ± 1.23 μM for **3h**, and 5.06 ± 1.01 μM for **3i**. Taking into account the experimental errors inherent in the MTT assays, the difference between the activity of **3g** and **3c–d** is not statistically significant. Encouraged by the activities of these more lipophilic derivatives, we sought to understand their interactions with a variety of biomolecules and study their activity *in vitro*. The MTT data for complexes **3g–i** (Table S2†) demonstrated that their activity was comparable to the most active (*cis*-tach)Ru complexes. However, detailed time course studies using *in situ* cellular imaging revealed further details of the behaviour of the complexes and indicated that **3g–i** are significantly more active against A549 and 293T cells when compared to cisplatin and **3f** (see below).

Two potential modes of action of the Ru complexes **3a–i** were investigated. Firstly, aquation of the Ru–Cl bond to the labile Ru–OH<sub>2</sub> complex followed by covalent interactions with nucleosides; and secondly, the ability of the complexes to interact with DNA by non-covalent interactions.

#### Aquation of Ru–Cl complexes

The aquation products of **3b**, **3c** and **3h** were characterised by <sup>31</sup>P{<sup>1</sup>H} NMR spectroscopy and ESI-MS. The <sup>31</sup>P{<sup>1</sup>H} NMR spectra for complexes recorded in water at pH 7.4 consisted of two singlet resonances, with one corresponding to the starting chlorido complex, and the other to the aquated (water or



Scheme 3 Representative aquation/anation for **3b** and **3c**.Fig. 5 Stacked  $^{31}\text{P}\{^1\text{H}\}$  NMR spectra of a 500  $\mu\text{M}$  solution (pH 7.4) of **3c** with various chloride concentrations to assign the resonances corresponding to the Ru chlorido (**3c**) and Ru aqua (**3c'**) complexes.

hydroxo) complex (Scheme 3). The assignment of each resonance was made by monitoring the changes upon addition of sodium chloride to the aqueous solution (Fig. 5). The high-resolution electrospray ionization mass spectrometry (HR-ESI-MS) data for **3b**, **3c** and **3h** recorded in 75%  $\text{H}_2\text{O}/25\%$  MeOH supported the formation of the aquated complexes with the molecular ion mass and isotope patterns corresponding to the ion  $[\text{Ru}-\text{Cl} + \text{OH}]^+$  in all cases.

### Kinetics of aquation

The kinetics of aquation and anation of the ruthenium *cis*-tach complexes **3b**, **3f** and **3h** were investigated by UV/Visible spectroscopy and compared to  $[\text{RuCl}(\eta^6\text{-bip})(\text{en})]^+$  (**C** in Fig. 1).<sup>29</sup> The time-evolution difference spectra for each complex are shown in Fig. S1.† The presence of isosbestic points in each spectrum suggests that the aquation process involves a single-step mechanism in the formation of the aqua derivative from the chlorido complex. The time dependence for the absorbance of each complex followed first order kinetics (Table 1). The rate of aquation of **3b** at physiological temperature (310 K) corresponds to a half-life of 33 s. Therefore, the rate of aquation is not a significant factor in the *in vitro* activity of the complex as aquation occurs rapidly in comparison to cell proliferation (typically 24 h).

Table 1 First order rate constants and half-lives for the aquation of (*cis*-tach)Ru complexes<sup>a</sup>

Complex	<i>T</i> /K	<i>k</i> /10 <sup>-3</sup> s <sup>-1</sup>	<i>t</i> <sub>1/2</sub> /s
<b>3b</b>	288	2.09 ± 0.02	331 ± 3
<b>3b</b>	293	3.60 ± 0.08	192 ± 5
<b>3b</b>	298	6.55 ± 0.06	106 ± 1
<b>3b</b>	303	10.7 ± 0.20	65 ± 1
<b>3b</b>	310	21.0 ± 0.70	33 ± 1
<b>3c</b>	298	63.9 ± 6.0	10 ± 2
<b>3f</b>	298	2.23 ± 0.12	311 ± 17
<b>3h</b>	298	1.02 ± 0.01	679 ± 3

<sup>a</sup> Measurements for the aquation of **3b**, **3c**, **3f** and **3h** (300  $\mu\text{M}$ ) in aqueous solution buffered at pH 7.4 (10 mM sodium phosphate).

Table 2 Kinetic parameters for the aquation (**3b** and **C**) and anation (**3b'** and **C'**) reactions<sup>a</sup>

Complex	<i>E</i> <sub>a</sub> /kJ mol <sup>-1</sup>	$\Delta H^\ddagger$ /kJ mol <sup>-1</sup>	$\Delta S^\ddagger$ /J K <sup>-1</sup> mol <sup>-1</sup>
<b>3b</b>	79.8 ± 0.7	77.3 ± 0.7	-27.6 ± 4.8
<b>3b'</b>	84.9 ± 1.0	82.4 ± 1.0	24.4 ± 3.4
<b>C</b> <sup>b</sup>	75.6 ± 0.6	73.1 ± 0.6	-55.7 ± 2.0
<b>C'</b> <sup>b</sup>	76.7 ± 1.3	74.1 ± 1.3	-13.6 ± 4.5

<sup>a</sup> Arrhenius activation energy (*E*<sub>a</sub>), activation enthalpy ( $\Delta H^\ddagger$ ) and activation entropy ( $\Delta S^\ddagger$ ) for the aquation and anation of **3b** and **3b'** at pH 7.4. <sup>b</sup> Complex **C** is shown in Fig. 1; values taken from ref. 29.

The rate constants for the aquation of **3b** ( $6.55 \pm 0.06 \times 10^{-3} \text{ s}^{-1}$ ) and **3c** ( $63.9 \pm 6.0 \times 10^{-3} \text{ s}^{-1}$ ) at 298 K are approximately 5 and 15 times faster than the  $\eta^6$ -biphenyl complex  $[\text{RuCl}(\eta^6\text{-bip})(\text{en})]^+$  (**C**) ( $1.28 \times 10^{-3} \text{ s}^{-1}$ ) respectively. This difference could be attributed to a weakening of the Ru–Cl bond, as shown by its lengthening in **3b** (2.4431(14) Å) and **3c** (2.4404(4) Å) when compared to **RAen** complex **C** (2.405(6) Å), due to the large *trans*-effect of the nitrogen donors in the *cis*-tach ligand.

The reaction rates for aquation and anation at different temperatures allowed for the determination of the Arrhenius activation energy (*E*<sub>a</sub>), activation enthalpy ( $\Delta H^\ddagger$ ) and activation entropy ( $\Delta S^\ddagger$ ). The *E*<sub>a</sub> and  $\Delta H^\ddagger$  for the aquation reaction are comparable to those reported for complex **C** (Table 2), consistent with the fundamental mechanistic steps in the aquation process being the same. Both **3b** and **3c** were found to be stable for the duration of a typical 72 h MTT assay experiment. Furthermore, over a two-week period at 37 °C, the  $^1\text{H}$  NMR spectrum of **3b** in 10%  $\text{D}_2\text{O}/90\%$   $\text{H}_2\text{O}$  did not change. Since the rate of aquation of the Ru–Cl is rapid, the biological activity is likely more dependent on the binding to biomolecules once this aquation step has taken place.

### Determination of the p*K*<sub>a</sub> of the Ru–OH<sub>2</sub>

The p*K*<sub>a</sub> of metal aqua complexes can form the basis of structure–activity relationships, and it has been noted that Ru complexes with higher p*K*<sub>a</sub> values have exhibited greater potency *in vitro*.<sup>48</sup> The UV/Visible spectra of **3b** and **3c** were recorded at pH intervals between 2 and 12 at 298 K in order to determine the p*K*<sub>a</sub> values for the coordinated water ligands. The data



were fitted to the Henderson–Hasselbalch equation which gave  $pK_a$  values of  $10.80 \pm 0.06$  and  $10.42 \pm 0.15$  for **3b** and **3c** respectively. The  $^1\text{H}$  NMR pH titrations, performed in  $\text{H}_2\text{O}$  with 1.6%  $\text{CD}_3\text{OD}$  to provide an NMR lock signal, resulted in  $pK_a$  values of  $10.85 \pm 0.02$  and  $10.54 \pm 0.02$  for **3b** and **3c** respectively and were therefore in good agreement with the UV/Visible spectroscopy determinations (Fig. S2†).

The acid-dissociation constants for these complexes are higher than those commonly obtained for  $(\eta^6\text{-arene})\text{ruthenium(II)}$  complexes, including  $[\text{Ru}(\text{OH}_2)(\eta^6\text{-biphenyl})(\text{en})]^{2+}$  ( $7.71 \pm 0.01$ ),  $[\text{Ru}(\text{OH}_2)(\eta^6\text{-tha})(\text{en})]^{2+}$  ( $8.01 \pm 0.03$ , tha = tetrahydroanthracene), and  $[\text{RuCl}(\text{OH}_2)(\eta^6\text{-C}_6\text{H}_6)(\text{PTA})]^{2+}$  ( $9.2 \pm 0.03$ ). The highest  $pK_a$  values reported are obtained for *O,O*-chelates, such as  $[\text{Ru}(\text{OH}_2)(\eta^6\text{-p-cymene})(\text{malonate})]^+$  ( $9.23 \pm 0.02$ ) and  $[\text{Ru}(\text{OH}_2)(\eta^6\text{-p-cymene})(\text{acac})]^+$  ( $9.41 \pm 0.01$ ).<sup>8,10,48,49</sup> The conclusion drawn from the  $pK_a$  measurements of complexes **3b** and **3c** is that the deprotonated forms are physiologically inaccessible by more than 3 pH units and aquation therefore affords exclusively the aqua complex.

One likely step in the mechanism of the antiproliferative effect of the Ru complexes **3a–i** is through coordination of a biomolecule to the site on Ru initially occupied by the chlorido ligand. The Ru complexes share a structural feature with cisplatin – a nitrogen donor *trans* to a chlorido ligand and have favourable aquation kinetics. Additionally, the amine groups of the *cis*-tach ligand are located *cis* to the chlorido ligand and may have a role in strengthening interactions with a bound molecule through hydrogen bonding. As a result of this reasoning, the series of DNA binding experiments described below were carried out.

### Calculated speciation in biological environments

The kinetic analysis shows that the rate of aquation for (*cis*-tach)Ru complexes is rapid at physiological temperature, reaching equilibrium within minutes. It is of interest to understand the extent to which these complexes are aquated outside and within a cell and to predict the composition of species present in each environment. In order to understand the physiological significance of the aquation/aquation equilibrium constants, we have predicted the distribution of chlorido and aqua species for the blood, cytoplasm and cell nucleus based on the reported chloride concentrations (Table S1†).<sup>29,50</sup>

The equilibrium constant,  $K$ , for the aquation of **3b** ( $K = 30.6 \pm 1.7 \times 10^{-3}$  M) is significantly greater than for **3c** ( $K = 5.9 \pm 0.1 \times 10^{-3}$  M) and results in a considerable difference in speciation (Fig. S3 and Table S1†). The two equilibrium constants span those of the RAen complexes. The equilibrium constant for the aquation of **3b** may result in the formation of the aqua species in the blood, cytoplasm, and cell nucleus, leading to a greater possibility for deactivation reactions to occur. For example, cisplatin is deactivated by glutathione binding prior to reaching the nucleus<sup>51</sup> and a similar process could account for the 10-fold reduction in activity of **3b** compared to **3c**.

The combination of a smaller equilibrium constant for aquation and a lower  $pK_a$  of the aqua species results in a

favourable proportion of **3c'** formed under different physiological environments. It is predicted for **3c** that a lower proportion of aqua species would be present in the blood, but a high proportion in the cell nucleus compared to RAen complexes. Therefore, the proportion of aqua species for **3c** is greater than for many other Ru complexes that have been evaluated for anti-cancer activity (Table S1†). This produces a good balance between protection of the complex outside the cell and a higher degree of activation inside the cell. As demonstrated by the kinetic study, the rate at which the complex is aquated once inside the cell is very rapid and is not a factor in the intracellular speciation.

### Interactions of **3b** and **3c** with nucleosides

It has been shown that  $[\text{RuCl}(\eta^6\text{-arene})(\text{en})]^+$  forms strong covalent adducts with DNA, with a preference for the N7 of guanine residues.<sup>52–54</sup> These interactions are strengthened by hydrogen bonds between the en ligand and the O6 of an adjacent guanine residue. The reaction of **3b** with 9-ethylguanine (EtG) (see ESI†) resulted in a new guanine containing species in the  $^1\text{H}$  NMR spectrum, evident from a new H8 resonance ( $\Delta\delta(\text{H}8) = -1.93$  ppm, Fig. S4†). This is consistent with guanine binding at the N7 position to give  $[\text{Ru}(\text{EtG-N}^7)(\text{dppp})(\text{cis-tach})]^{2+}$ .

Substitution of the chlorido ligand with a guanine derivative was demonstrated by the reaction of **3b** with guanosine (Guo) after incubation at 37 °C for 24 h in water. The solution was diluted to 0.1 mM with 50% methanol in water and the ESI mass spectrum recorded. An ion with mass and isotope pattern corresponding to  $[\text{M-Cl} + \text{Guo-H}]^+$  (30%) and  $[\text{M-Cl} + \text{Guo}]^{2+}$  (30%) was observed at  $m/z$  911.1 and 456.2 respectively along with chlorido (100%) and hydroxy (30%) species. In contrast to **3b**, the reaction of **3c** with EtG did not produce an observable adduct in the  $^1\text{H}$  NMR spectrum after 24 h at 37 °C. Therefore, it is plausible that coordination to **3c** of the N7 of guanine may not be involved in the mechanism by which this complex inhibits proliferation.

### Binding of Ru to CT-DNA

The intercalating fluorescent dye ethidium bromide (EB) was used in a competition assay with complexes **3b**, **3f**, **3g**, **3h**, **3i** as well as the known DNA intercalator  $[\text{Ru}(\text{bpy})_2(\text{DPPZ})]^{2+}$  (DPPZ = dipyrro[3,2-*a*:2',3'-*c*]phenazine) as a benchmark (see Fig. 6).<sup>55</sup> A solution of 50  $\mu\text{M}$  CT-DNA and 5  $\mu\text{M}$  EB ( $[\text{CT-DNA}]/[\text{EB}] = 10 : 1$ )

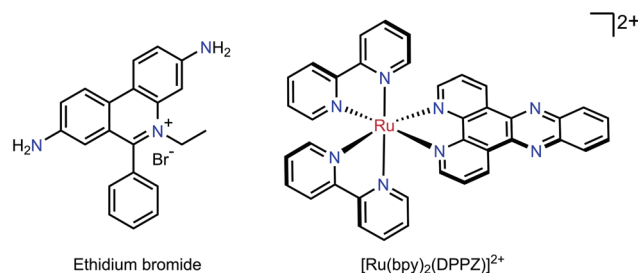


Fig. 6 Chemical structures of the DNA intercalating dye ethidium bromide and the known intercalating complex  $[\text{Ru}(\text{bpy})_2(\text{DPPZ})]^{2+}$ .



was prepared and the EB-CT-DNA adduct was subjected to titration with Ru complexes. The quenching constants ( $K_{SV}$ ) were calculated according to the Stern–Volmer (SV) equation.<sup>56–58</sup>

$$\frac{I_0}{I} = 1 + K_{SV}[Q]$$

where  $I_0$  and  $I$  are the emission intensity in the absence and presence of quencher complex respectively,  $K_{SV}$  is the Stern–Volmer quenching constant and  $[Q]$  is the quencher concentration. From these plots, the apparent binding constants ( $K_{app}$ ) were calculated using:  $K_{EB}[EB] = K_{app}[\text{complex}]$ , where  $K_{EB} = 1 \times 10^7 \text{ M}^{-1}$ ,  $[EB] = 5 \mu\text{M}$ , and  $[\text{complex}]$  is the concentration of Ru complex which gave a 50% reduction of the initial emission intensity of EB.

For titrations with complexes **3g**, **3h**, **3i**, a gradual decrease in emission was observed (Fig. 7 and Fig. S7†) implying that

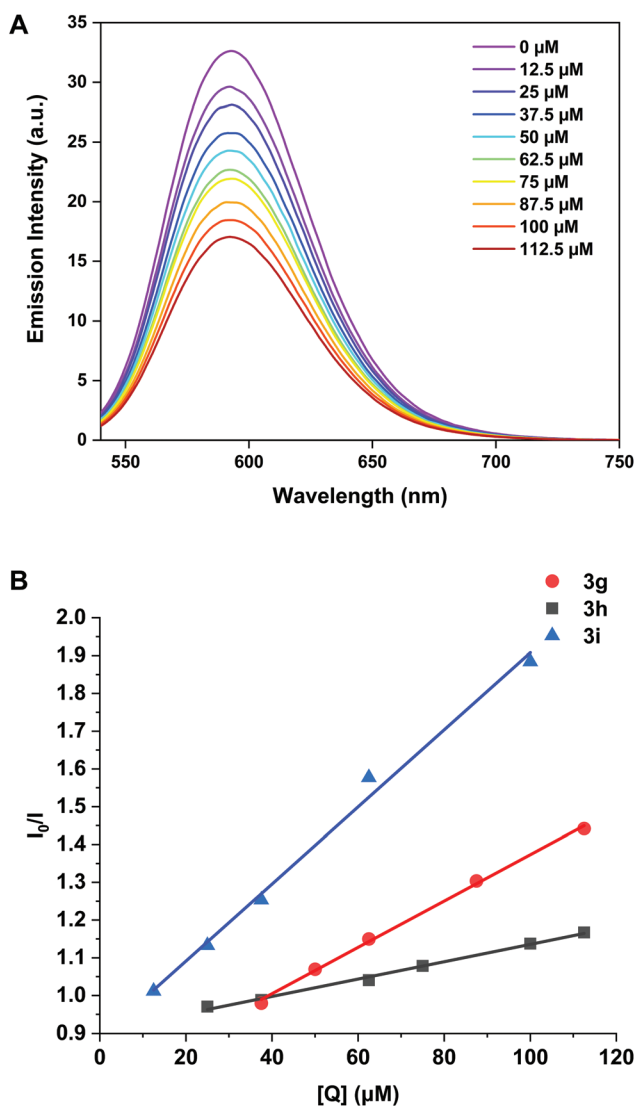


Fig. 7 (A) Emission spectra of CT-DNA (50  $\mu\text{M}$ ) and EB (5  $\mu\text{M}$ ) competition assay with **3h** (0–112.5  $\mu\text{M}$ ). (B) Stern–Volmer plots EB–CT-DNA vs. the concentration of **3g**, **3h** and **3i**.

Table 3 Binding ( $K_{app}$ ) and quenching ( $K_{SV}$ ) constants for the interaction of Ru complexes with CT-DNA<sup>a</sup>

Complex	$K_{SV}/10^3 \text{ M}^{-1}$	$K_{app}/10^5 \text{ M}^{-1}$
<b>3g</b>	$6.13 \pm 0.16$	$3.07 \pm 0.07$
<b>3h</b>	$2.31 \pm 0.08$	$1.16 \pm 0.04$
<b>3i</b>	$10.21 \pm 0.05$	$5.11 \pm 0.25$
<b>3b</b>	— <sup>b</sup>	— <sup>b</sup>
<b>3f</b>	— <sup>b</sup>	— <sup>b</sup>
$[\text{Ru}(\text{bpy})_2(\text{DPPZ})]^{2+}$	$34.97 \pm 0.43$	$17.48 \pm 0.22$

<sup>a</sup> Calculated as the average of triplicate experiments. <sup>b</sup> No binding detected.

these complexes outcompete the EB to interact with DNA. The same titration was performed with **3b** and **3f** but no appreciable decrease in emission was observed for the dppe complex indicating little intercalative interaction is present (Fig. S7†).

For **3f**, the decrease was so small that a binding constant could not be calculated and therefore intercalation is not considered a viable mode of action for this complex. The binding constants ( $K_{app}$ ) for **3g**, **3h** and **3i** are  $3.07 \pm 0.07 \times 10^5 \text{ M}^{-1}$ ,  $1.16 \pm 0.04 \times 10^5 \text{ M}^{-1}$  and  $5.11 \pm 0.25 \times 10^5 \text{ M}^{-1}$  respectively (Table 3), indicating that increasing the aromatic surface of the ligand backbone (**3h** to **3i**) gave a five-fold increase in binding affinity.

These binding constants are comparable, and in some cases superior to, rigid dinuclear ( $\eta^6$ -arene)Ru complexes previously reported.<sup>59</sup> The apparent binding constant of the known DNA intercalator  $[\text{Ru}(\text{bpy})_2(\text{DPPZ})]^{2+}$  was calculated as  $1.75 \pm 0.02 \times 10^6 \text{ M}^{-1}$ , only one order of magnitude higher than the (*cis*-tach)Ru complexes.

### Interactions with plasmid DNA

Gel electrophoretic mobility shift assays (GEMSA) were used to study the interactions of **3b** and **3c** with plasmid DNA. From <sup>1</sup>H NMR spectroscopy and mass spectrometry experiments, 9-ethylguanine (EtG) coordination was observed with **3b**, whereas **3c** showed no reaction with EtG after 24 h at 37 °C (see ESI†). This result was mirrored in the gel electrophoresis assays with pUC18 DNA (Fig. 8), where **3c** did not alter the

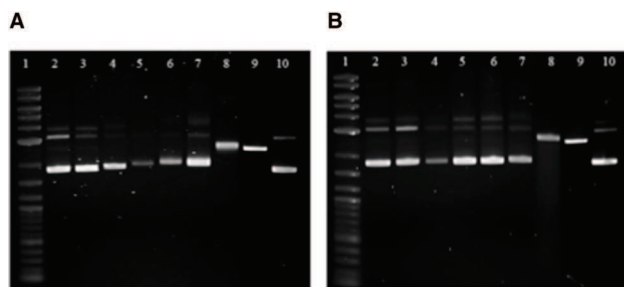


Fig. 8 GEMSA of **3b** (A) and **3c** (B) with pUC18 plasmid DNA after 20 h at 37 °C. Lanes: molecular marker (1); pUC18 (2 and 10); pUC18 + **3b** or **3c** (% bpe), 2.5 (3), 10 (4), 25 (5), 50 (6), 100 (7); pUC18 + 10% bpe cisplatin (8); pUC18 linearised by single cut with SmaI (9). bpe = base pair equivalents.





mobility of either the open coil (OC) or super-coiled (CCC) forms of the plasmid under the conditions employed. However, **3b** did alter the mobility of the OC and CCC forms of pUC18 DNA at concentrations above 25% bpe (base pair equivalents), where a small shift was observed with increasing concentration (lanes 5–7, Fig. 8). These results suggest that binding to the N7 of guanine is not involved in the mechanism of action for **3c**. It is evident that **3b** and **3c** (lanes 3–7, Fig. 8) have different reactivity with plasmid DNA from cisplatin (lane 8, Fig. 8), indicating that these complexes may have different cellular targets that result in cytotoxicity.

### Binding to G-quadruplex DNA

G-quadruplexes are four-stranded DNA secondary structures that form from guanine-rich sequences (Fig. 9). They attract particular attention as an anticancer target, owing to the occurrence of quadruplex-forming motifs at chromosome telomeres and in the promoter sequences of several oncogenes, e.g. the *c-myc* gene.<sup>60–62</sup> These structures can adopt a variety of topologies characterised by the relative orientations (parallel/antiparallel) of the DNA strands in the folded structure.<sup>63–65</sup> Furthermore, the planar G-tetrads provide additional opportunities for stacking and intercalative interactions with complexes, since the dimensions are significantly larger than those of a classical Watson–Crick base pair.<sup>66</sup> These DNA sequences can hypothetically be targeted with high-selectivity in order to reduce or eliminate the off-target effects resulting from indiscriminate binding to duplex DNA.<sup>60,66</sup>

This therapeutic hypothesis has led to many groups designing G-quadruplex binders as potential anticancer agents<sup>67–70</sup> and many metal complexes are known to bind G-quadruplexes effectively through covalent and non-covalent interactions.<sup>71</sup> For example, Liu *et al.* found that ruthenium polypyridyl complexes containing 4idip (4-indoleimidazo[4,5-*f*][1,10]phenanthroline) ligands were able to selectively stabilise the human telomeric G-quadruplex structure.<sup>68,69</sup>

As a result of the intercalating ability of **3g–i** indicated by the EB assays, we investigated the ability of the complexes to stabilise G-quadruplex DNA and duplex DNA structures. The extent of stabilisation was quantified by performing a fluorescence resonance energy transfer (FRET) assay initially reported by De Cian *et al.*<sup>72</sup> (see ESI†). The change in DNA melting temperature ( $\Delta T_{1/2}$ ) induced by a Ru complex compared to that of the oligonucleotide in the absence of complex provides an indication of the capacity of the complex to stabilise the G-quadruplex structure. We chose to investigate three models of G-quadruplex DNA and one of duplex DNA (see Fig. 9). The human telomeric sequence (F21T) was studied in potassium- and sodium-containing buffer owing to the known influence of the metal ion on the polymorphism of this sequence.<sup>73,74</sup> The G-quadruplex sequence found in the *c-myc* oncogene promoter (FmycT) was selected as a model of this anticancer target.

The results of the FRET experiments are shown in Fig. 9 and representative raw data in the ESI (Fig. S8†). Complexes **3g** and **3h** did not induce any appreciable stabilisation of quadruplex DNA ( $\Delta T_{1/2} < 3$  °C at 1  $\mu$ M complex) but **3i** did stabilise F21T ( $\Delta T_{1/2} = + 7.5 \pm 2.3$  °C) in sodium-containing buffer. Additionally, **3i** was selective for quadruplex DNA structures, stabilising the quadruplex sequence FmycT ( $\Delta T_{1/2} = + 6.2 \pm 1.5$  °C) whilst stabilisation of the duplex sequence F10T (Fig. 9) was negligible. Meanwhile, the same complex did not significantly stabilize F21T in  $K^+$ -rich buffer ( $\Delta T_{1/2} < 3$  °C), suggesting that as well as G4/duplex selectivity, the complex can also discriminate between different G-quadruplex topologies to some extent. As a control, the well-known DNA intercalator complex  $[Ru(bpy)_2(DPPZ)]^{2+}$  did not significantly stabilise quadruplex DNA ( $\Delta T_{1/2} = + 1.6 \pm 0.4$  °C for F21T) or duplex DNA ( $\Delta T_{1/2} = + 1.2 \pm 0.3$  °C for F10T) as previously reported.<sup>67</sup>

The dibenzo[*f,h*]quinoxaline moiety in **3i** provides a large aromatic surface that may selectively stabilise G-quadruplex DNA through preferential association with the large G-tetrads

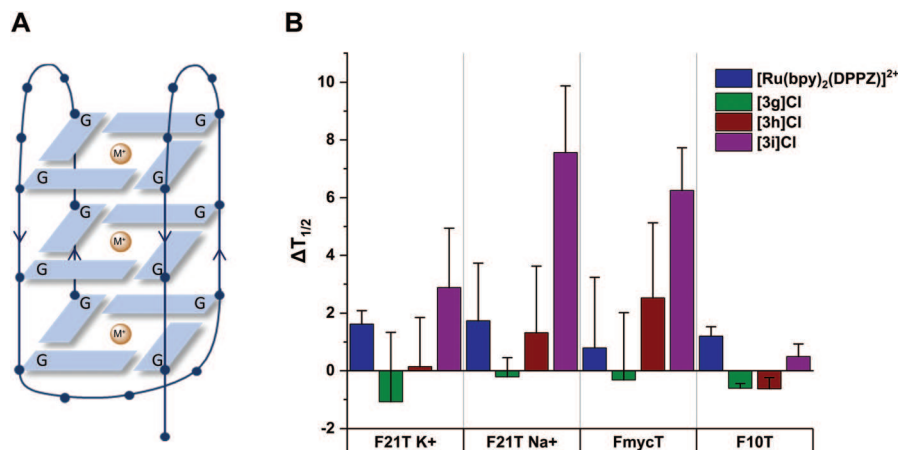


Fig. 9 (A) Schematic representation of a DNA G-quadruplex. The folding of the oligonucleotide into a four-stranded structure creates a stacked arrangement of G-tetrads, each formed by the square-planar assembly of four guanine (G) residues. The overall topology is determined by the relative orientation of the neighbouring strands (indicated by arrows) and stabilized by co-ordination to metal ions ( $M^+$ ). (B) Average  $\Delta T_{1/2}$  for quadruplex (F21T and FmycT) and duplex (F10T) DNA after treatment with Ru complexes (1  $\mu$ M). Error bars show standard deviations from four experiments.



over intercalation with Watson–Crick base pairs, akin to the 4idip examples previously reported. Complex **3i** showed stronger binding to quadruplex DNA than **3g** and **3h** in experiments with quadruplex DNA as well as CT-DNA as previously shown. This interesting discovery that Ru *cis*-tach complexes interact with quadruplex DNA warrants further study.

### LiveCyte cell imaging

The viability of A549 cells and 293T cells was assessed using LiveCyte (Phasefocus Ltd) label-free time-lapse microscopy.<sup>75,76</sup> LiveCyte cell imaging does not require the cell to be labelled with antibodies or cellular dyes; the cells are unperturbed and

the imaging process is not toxic to the cells; the cellular changes measured are reported with confidence to be associated with the presence of the compounds. Conventional light microscope imaging requires the cells to be labelled with a DNA binding or cytoplasmic dye and requires higher energy lasers, compared to the LiveCyte: both the labelling and the imaging light source in conventional light microscopy may be cytotoxic over prolonged time and needs to be considered when interpreting results.

This technique enables quantification of the total cellular dry mass as an indicator of cell death and growth. For A549 and 293T cells, the effect of treatment with cisplatin and **3i** is shown at 36 and 72-hour time-points (Fig. 10 and 11). For

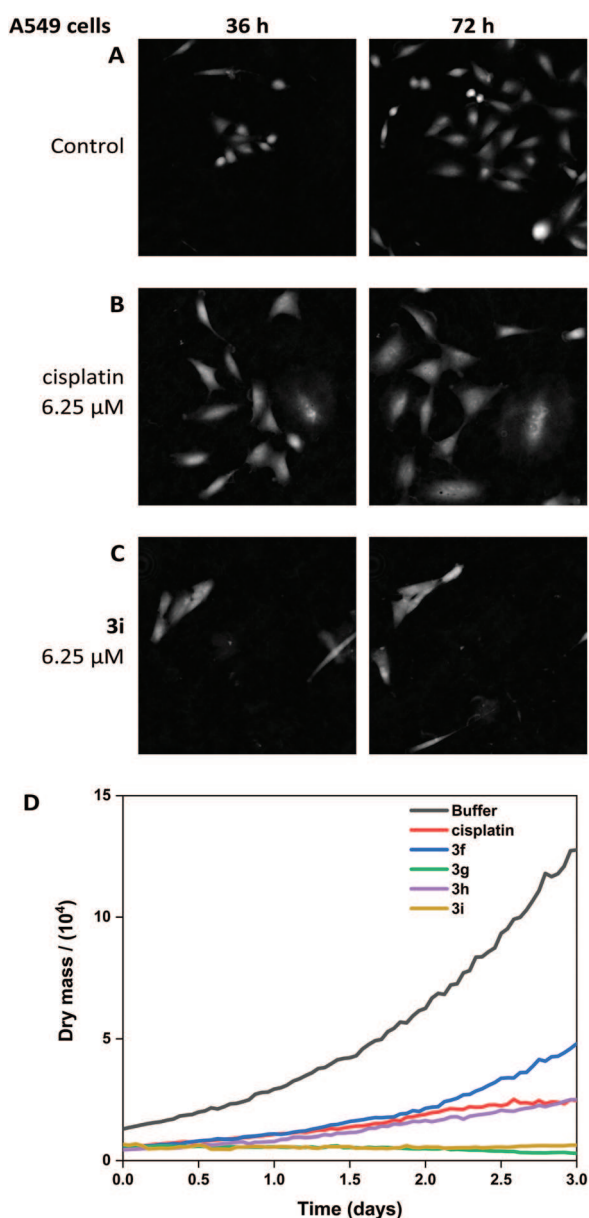


Fig. 10 LiveCyte time-lapse images of A549 control cells (A) and after treatment with 6.25 μM cisplatin (B) and 6.25 μM **3i** (C). (D) Dry mass plot to show growth inhibition when treated with cisplatin, **3f**, **3g**, **3h**, **3i** (all at 6.25 μM).

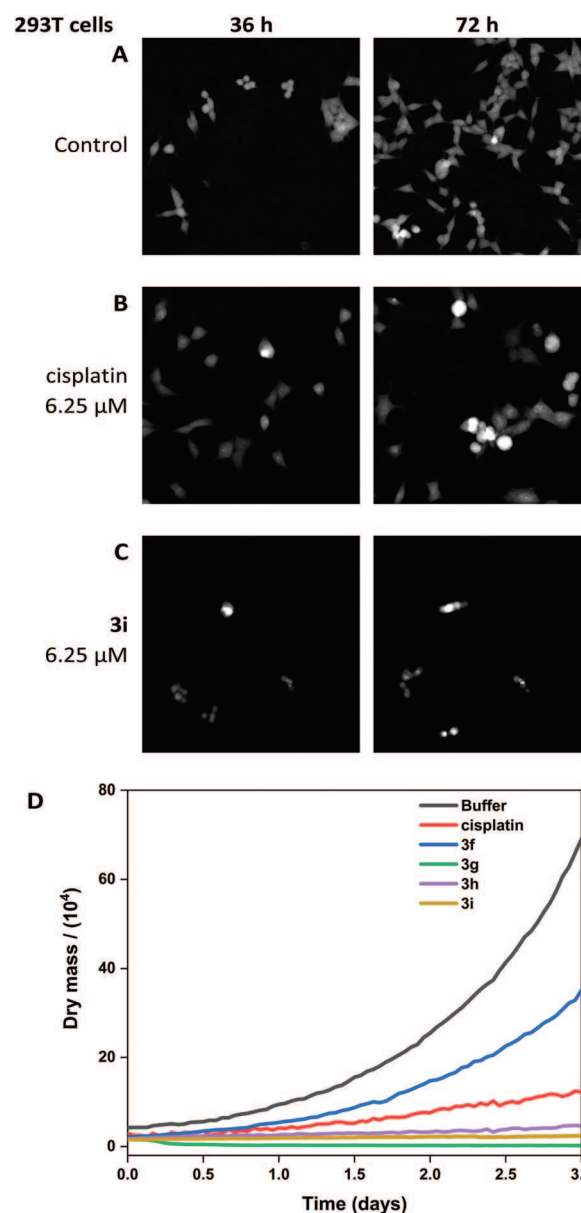


Fig. 11 LiveCyte time-lapse images of 293T control cells (A) and after treatment with 6.25 μM cisplatin (B) and 6.25 μM **3i** (C). (D) Dry mass plot to show growth inhibition when treated with cisplatin, **3f**, **3g**, **3h**, **3i** (all at 6.25 μM).



0-hour time points and compounds **3f–h** see Fig. S11–13.† The MTT assay is an endpoint colourimetric readout of cell viability and does not provide any visual characteristics of the cells state. In this preliminary study, integrated image analysis software (Livecyte Cell Analysis Toolbox) was used to extract real-time changes in morphology and dry mass of each cell over time. The summed mass of the cellular components excluding water (known as dry mass, see Fig. S9 and 10†) was calculated and for each treated population of cells used as a measure of the combined growth and proliferation. For A549 cells (Fig. 10D), the reduction in dry mass is greatest for **3g** and **3i** followed by the slightly less active derivative **3h** (which shows comparable results to cisplatin), and **3f** gave the smallest decrease in dry mass of those tested. This difference in dry mass reduction between cisplatin and **3f** is notable as the MTT assay derived IC<sub>50</sub> values are within error of each other (IC<sub>50</sub> = 2.7 μM). For 293T cells (Fig. 11D), this effect is more pronounced with **3f** causing significantly less reduction in dry mass than cisplatin.

The other (*cis*-tach)Ru complexes **3g–i** caused significant cell death at a concentration of 6.25 μM as is evident from the cell images and dry mass curves, and this greater activity is consistent with **3g–i** exhibiting cytotoxicity by multiple mechanisms.

## Conclusions

In summary, the compounds presented here are the first reported examples of cytotoxic ruthenium(II) *cis*-tach complexes. The complex [RuCl(dms*o*-S)<sub>2</sub>(*cis*-tach)]Cl (**1**) is obtained in high yield and is a very useful precursor for the synthesis of a range of ruthenium(II) derivatives. Complexes **3a–i** which contain chelating diphosphine ligands are highly active *in vitro* against A549, A2780 and 293T cancer cell lines. In particular, complexes with flexible aliphatic backbones (**3c** and **3d**) or planar aromatic backbones (**3f–i**) are the most cytotoxic, with activity in the A549 cell line more than twice that of cisplatin, and activity in the A2780 cell line equipotent to the clinical drug. The p*K*<sub>a</sub> values for **3b–c** are significantly higher than most (arene)Ru complexes which, coupled with favourable aquation kinetics, enables high levels of the active Ru–OH<sub>2</sub> complex in the cell nucleus.

New analogues with planar aromatic backbones have been shown to intercalate strongly with CT-DNA models, and, in the case of **3i** also selectively stabilise G-quadruplex DNA over duplex DNA. The anti-proliferative effect has been monitored by LiveCyte, label-free, time-lapse imaging and stark differences are observed between the phenylene derivative **3f** and the extended aromatic derivatives (**3g** and **3i**). Overall, these preliminary biological studies suggest that (*cis*-tach)Ru diphosphine complexes exhibit a dual-action cytotoxic effect, targeting cellular DNA by intercalation, as well as by modes of action involving covalent binding with DNA. This robust, water-soluble molecular architecture could be further developed to produce next generation ruthenium chemotherapeutic agents.

Further cell studies exploiting the tunability of phosphine ligands that result in targeted metallodrugs are ongoing.

## Conflicts of interest

There are no conflicts to declare.

## Acknowledgements

We thank the Bristol Chemical Synthesis Centre for Doctoral Training, funded by EPSRC (EP/L015366/1) and the University of Bristol, for a PhD studentship (DEW). We thank the EPSRC and the University of York (studentship to AJG), University of Garmian (studentship to SWA) and the University of York Research Priming Fund for financial support.

## References

- 1 L. Zeng, P. Gupta, Y. Chen, E. Wang, L. Ji, H. Chao and Z.-S. Chen, *Chem. Soc. Rev.*, 2017, **46**, 5771–5804.
- 2 C. G. Hartinger, S. Zorbas-Seifried, M. A. Jakupec, B. Kynast, H. Zorbas and B. K. Keppler, *J. Inorg. Biochem.*, 2006, **100**, 891–904.
- 3 E. Alessio, *Eur. J. Inorg. Chem.*, 2017, 1549–1560.
- 4 A. Bijelic, S. Theiner, B. K. Keppler and A. Rompel, *J. Med. Chem.*, 2016, **59**, 5894–5903.
- 5 S. Leijen, S. A. Burgers, P. Baas, D. Pluim, M. Tibben, E. van Werkhoven, E. Alessio, G. Sava, J. H. Beijnen and J. H. M. Schellens, *Invest. New Drugs*, 2015, **33**, 201–214.
- 6 C. G. Hartinger, M. A. Jakupec, S. Zorbas-Seifried, M. Groessl, A. Egger, W. Berger, H. Zorbas, P. J. Dyson and B. K. Keppler, *Chem. Biodivers.*, 2008, **5**, 2140–2155.
- 7 R. E. Morris, R. E. Aird, P. Del Socorro Murdoch, H. Chen, J. Cummings, N. D. Hughes, S. Parsons, A. Parkin, G. Boyd, D. I. Jodrell and P. J. Sadler, *J. Med. Chem.*, 2001, **44**, 3616–3621.
- 8 R. Fernández, M. Melchart, A. Habtemariam, S. Parsons and P. J. Sadler, *Chem. – Eur. J.*, 2004, **10**, 5173–5179.
- 9 A. Habtemariam, M. Melchart, R. Fernández, S. Parsons, I. D. H. Oswald, A. Parkin, F. P. A. Fabbiani, J. E. Davidson, A. Dawson, R. E. Aird, D. I. Jodrell and P. J. Sadler, *J. Med. Chem.*, 2006, **49**, 6858–6868.
- 10 A. F. A. Peacock, M. Melchart, R. J. Deeth, A. Habtemariam, S. Parsons and P. J. Sadler, *Chem. – Eur. J.*, 2007, **13**, 2601–2613.
- 11 Q. Wu, L.-Y. Liu, S. Li, F.-X. Wang, J. Li, Y. Qian, Z. Su, Z.-W. Mao, P. J. Sadler and H.-K. Liu, *J. Inorg. Biochem.*, 2018, **189**, 30–39.
- 12 C. S. Allardyce, P. J. Dyson, D. J. Ellis and S. L. Heath, *Chem. Commun.*, 2001, **15**, 1396–1397.
- 13 C. Scolaro, A. Bergamo, L. Brescacin, R. Delfino, M. Cocchietto, G. Laurency, T. J. Geldbach, G. Sava and P. J. Dyson, *J. Med. Chem.*, 2005, **48**, 4161–4171.



- 14 H. A. Wee and P. J. Dyson, *Eur. J. Inorg. Chem.*, 2006, **20**, 4003–4018.
- 15 C. Scolaro, A. B. Chaplin, C. G. Hartinger, A. Bergamo, M. Cocchietto, B. K. Keppler, G. Sava and P. J. Dyson, *Dalton Trans.*, 2007, 5065–5072.
- 16 Z. Adhireksan, G. E. Davey, P. Campomanes, M. Groessel, C. M. Clavel, H. Yu, A. A. Nazarov, C. H. F. Yeo, W. H. Ang, P. Dröge, U. Rothlisberger, P. J. Dyson and C. A. Davey, *Nat. Commun.*, 2014, **5**, 3462.
- 17 A. Bergamo, P. J. Dyson and G. Sava, *Coord. Chem. Rev.*, 2018, **360**, 17–33.
- 18 S. M. Guichard, R. Else, E. Reid, B. Zeitlin, R. Aird, M. Muir, M. Dodds, H. Fiebig, P. J. Sadler and D. I. Jodrell, *Biochem. Pharmacol.*, 2006, **71**, 408–415.
- 19 S. Monro, K. L. Colón, H. Yin, J. Roque, P. Konda, S. Gujar, R. P. Thummel, L. Lilge, C. G. Cameron and S. A. McFarland, *Chem. Rev.*, 2019, **119**, 797–828.
- 20 A. K. Renfrew, J. Karges, R. Scopelliti, F. D. Bobbink, P. Nowak-Sliwinska, G. Gasser and P. J. Dyson, *ChemBioChem*, 2019, **20**, 2876–2882.
- 21 B. S. Howerton, D. K. Heidary and E. C. Glazer, *J. Am. Chem. Soc.*, 2012, **134**, 8324–8327.
- 22 J. Liu, C. Zhang, T. W. Rees, L. Ke, L. Ji and H. Chao, *Coord. Chem. Rev.*, 2018, **363**, 17–28.
- 23 H. Yin, M. Stephenson, J. Gibson, E. Sampson, G. Shi, T. Sainuddin, S. Monro and S. A. McFarland, *Inorg. Chem.*, 2014, **53**, 4548–4559.
- 24 B. Serli, E. Zangrando, T. Gianferrara, C. Scolaro, P. J. Dyson, A. Bergamo and E. Alessio, *Eur. J. Inorg. Chem.*, 2005, **17**, 3423–3434.
- 25 J. M. Walker, A. McEwan, R. Pycko, M. L. Tassotto, C. Gottardo, J. Th'ng, R. Wang and G. J. Spivak, *Eur. J. Inorg. Chem.*, 2009, 4629–4633.
- 26 M. M. Haghdoost, G. Golbaghi, M. Létourneau, S. A. Patten and A. Castonguay, *Eur. J. Med. Chem.*, 2017, **132**, 282–293.
- 27 S. Thota, D. A. Rodrigues, D. C. Crans and E. J. Barreiro, *J. Med. Chem.*, 2018, **61**, 5805–5821.
- 28 B. S. Murray, M. V. Babak, C. G. Hartinger and P. J. Dyson, *Coord. Chem. Rev.*, 2016, **306**, 86–114.
- 29 F. Wang, H. Chen, S. Parsons, I. D. H. Oswald, J. E. Davidson and P. J. Sadler, *Chem. – Eur. J.*, 2003, **9**, 5810–5820.
- 30 H. Huang, P. Zhang, Y. Chen, L. Ji and H. Chao, *Dalton Trans.*, 2015, **44**, 15602–15610.
- 31 B. Greener, L. Cronin, G. D. Wilson and P. H. Walton, *J. Chem. Soc., Dalton Trans.*, 1996, 401–403.
- 32 B. Greener, S. P. Foxon and P. H. Walton, *New J. Chem.*, 2000, **24**, 269–273.
- 33 B. Greener, M. H. Moore and P. H. Walton, *Chem. Commun.*, 1996, 27–28.
- 34 L. E. Erickson, D. J. Cook, G. D. Evans, J. E. Sarneski, P. J. Okarma and A. D. Sabatelli, *Inorg. Chem.*, 1990, **29**, 1958–1967.
- 35 A. J. Gamble, J. M. Lynam, R. J. Thatcher, P. H. Walton and A. C. Whitwood, *Inorg. Chem.*, 2013, **52**, 4517–4527.
- 36 P. Ebrahimpour, M. F. Haddow and D. F. Wass, *Inorg. Chem.*, 2013, **52**, 3765–3771.
- 37 T. Kobayashi, S. Tobita, M. Kobayashi, T. Imajyo, M. Chikira, M. Yashiro and Y. Fujii, *J. Inorg. Biochem.*, 2007, **101**, 348–361.
- 38 K. G. Moodley, *Der Pharma Chem.*, 2019, **11**, 1–19.
- 39 K. J. Kilpin, S. M. Cammack, C. M. Clavel and P. J. Dyson, *Dalton Trans.*, 2013, **42**, 2008–2014.
- 40 A. Habtemariam, M. Melchart, R. Fernández, S. Parsons, I. D. H. Oswald, A. Parkin, F. P. A. Fabbiani, J. E. Davidson, A. Dawson, R. E. Aird, D. I. Jodrell and P. J. Sadler, *J. Med. Chem.*, 2006, **49**, 6858–6868.
- 41 P. J. Dyson and F. Marchetti, *Dalton Trans.*, 2017, **46**, 11973–12366.
- 42 J. Zhao, D. Zhang, W. Hua, W. Li, G. Xu and S. Gou, *Organometallics*, 2018, **37**, 441–447.
- 43 G. Y. Park, J. J. Wilson, Y. Song and S. J. Lippard, *Proc. Natl. Acad. Sci. U. S. A.*, 2012, **109**, 11987–11992.
- 44 A. Hucke, G. Y. Park, O. B. Bauer, G. Beyer, C. Köppen, D. Zeeh, C. A. Wehe, M. Sperling, R. Schröter, M. Kantauskaitė, Y. Hagos, U. Karst, S. J. Lippard and G. Ciarimboli, *Front. Chem.*, 2018, **6**, 180.
- 45 D. T. Túng, D. T. Tuân, N. Rasool, A. Villinger, H. Reinke, C. Fischer and P. Langer, *Adv. Synth. Catal.*, 2009, **351**, 1595–1609.
- 46 S. W. Hunt, L. Yang, X. Wang and M. G. Richmond, *J. Organomet. Chem.*, 2011, **696**, 1432–1440.
- 47 Y. Miura, H. Chiba, R. Katoono, H. Kawai, K. Fujiwara, S. Suzuki, K. Okada and T. Suzuki, *Tetrahedron Lett.*, 2012, **53**, 6561–6564.
- 48 A. L. Noffke, A. Habtemariam, A. M. Pizarro and P. J. Sadler, *Chem. Commun.*, 2012, **48**, 5219–5246.
- 49 C. Gossens, A. Dorcier, P. J. Dyson and U. Rothlisberger, *Organometallics*, 2007, **26**, 3969–3975.
- 50 M. Jennerwein and P. A. Andrews, *Drug Metab. Dispos.*, 1995, **23**, 178–184.
- 51 A. K. Godwin, A. Meister, P. J. O'Dwyer, C. S. Huang, T. C. Hamilton and M. E. Anderson, *Proc. Natl. Acad. Sci. U. S. A.*, 1992, **89**, 3070–3074.
- 52 C. Gossens, I. Tavernelli and U. Rothlisberger, *J. Am. Chem. Soc.*, 2008, **130**, 10921–10928.
- 53 H. Chen, J. A. Parkinson, R. E. Morris and P. J. Sadler, *J. Am. Chem. Soc.*, 2003, **125**, 173–186.
- 54 H. Chen, J. A. Parkinson, S. Parsons, R. A. Coxall, R. O. Gould and P. J. Sadler, *J. Am. Chem. Soc.*, 2002, **124**, 3064–3082.
- 55 A. Banerjee, J. Singh and D. Dasgupta, *J. Fluoresc.*, 2013, **23**, 745–752.
- 56 T. Topalá, A. Bodoki, L. Oprean and R. Oprean, *Farmacia*, 2014, **62**, 1049–1061.
- 57 C. V. Kumar and E. H. Asuncion, *J. Am. Chem. Soc.*, 1993, **115**, 8547–8553.
- 58 A. E. Friedman, C. V. Kumar, N. J. Turro and J. K. Barton, *Nucleic Acids Res.*, 1991, **19**, 2595–2602.
- 59 Q. Wu, L. Y. Liu, S. Li, F. X. Wang, J. Li, Y. Qian, Z. Su, Z. W. Mao, P. J. Sadler and H. K. Liu, *J. Inorg. Biochem.*, 2018, **189**, 30–39.



- 60 S. Neidle, *J. Med. Chem.*, 2016, **59**, 5987–6011.
- 61 S. Asamitsu, S. Obata, Z. Yu, T. Bando and H. Sugiyama, *Molecules*, 2019, **24**, 429.
- 62 S. Balasubramanian, L. H. Hurley and S. Neidle, *Nat. Rev. Drug Discovery*, 2011, **10**, 261–275.
- 63 M. P. O'Hagan, J. C. Morales and M. C. Galan, *Eur. J. Org. Chem.*, 2019, 4995–5017.
- 64 J. Kypr, I. Kejnovská, D. Renčiuk and M. Vorlíčková, *Nucleic Acids Res.*, 2009, **37**, 1713–1725.
- 65 J. Dai, M. Carver and D. Yang, *Biochimie*, 2008, **90**, 1172–1183.
- 66 A. De Cian, E. DeLemos, J. L. Mergny, M. P. Teulade-Fichou and D. Monchaud, *J. Am. Chem. Soc.*, 2007, **129**, 1856–1857.
- 67 C. Rajput, R. Rutkaite, L. Swanson, I. Haq and J. A. Thomas, *Chem. – Eur. J.*, 2006, **12**, 4611–4619.
- 68 Q. Yu, Y. Liu, J. Zhang, F. Yang, D. Sun, D. Liu, Y. Zhou and J. Liu, *Metallomics*, 2013, **5**, 222–231.
- 69 Q. Yu, Y. Liu, C. Wang, D. Sun, X. Yang, Y. Liu and J. Liu, *PLoS One*, 2012, **7**, 1–13.
- 70 M. P. O'Hagan, S. Haldar, M. Duchi, T. A. A. Oliver, A. J. Mulholland, J. C. Morales and M. C. Galan, *Angew. Chem.*, 2019, **58**, 4334–4338.
- 71 S. N. Georgiades, N. H. Abd Karim, K. Suntharalingam and R. Vilar, *Angew. Chem., Int. Ed.*, 2010, **49**, 4020–4034.
- 72 A. De Cian, L. Guittat, M. Kaiser, B. Saccà, S. Amrane, A. Bourdoncle, P. Alberti, M. P. Teulade-Fichou, L. Lacroix and J. L. Mergny, *Methods*, 2007, **42**, 183–195.
- 73 Y. Wang and D. J. Patel, *Structure*, 1993, **1**, 263–282.
- 74 K. N. Luu, A. T. Phan, V. Kuryayyi, L. Lacroix and D. J. Patel, *J. Am. Chem. Soc.*, 2006, **128**, 9963–9970.
- 75 J. Marrison, L. Rätty, P. Marriott and P. O'Toole, *Sci. Rep.*, 2013, **3**, 1–7.
- 76 R. Kasprowicz, R. Suman and P. O'Toole, *Int. J. Biochem. Cell Biol.*, 2017, **84**, 89–95.

