

University of New Mexico

UNM Digital Repository

Occasional Papers

Museum of Southwestern Biology


9-21-2020

Faunal remains from archaeology sites in southwestern New Mexico

Karen Gust Schollmeyer
Archaeology Southwest

S. O. MacDonald
University of New Mexico

Follow this and additional works at: <https://digitalrepository.unm.edu/occasionalpapers>

 Part of the [Biodiversity Commons](#), [Ecology and Evolutionary Biology Commons](#), and the [Paleobiology Commons](#)

Recommended Citation

PUBLICATIONS OF THE MUSEUM OF SOUTHWESTERN BIOLOGY UNIVERSITY OF NEW MEXICO
<https://digitalrepository.unm.edu/msb/> The publications of the Museum of Southwestern Biology of the University of New Mexico are issued under the auspices of the Dean of the College of Arts and Sciences and the Director of the Museum of Southwestern Biology. Short research studies that are specimen based are published as Occasional Papers, whereas longer contributions appear as Special Publications. All are peer-reviewed, numbered separately, and published on an irregular basis. The preferred format for citing the Museum's publications is Occasional Paper (or Special Publication), Museum of Southwestern Biology, The University of New Mexico, Albuquerque, NM. Authors interested in submitting scholarly work for publication should first contact the Managing Editor, Museum Publications, Museum of Southwestern Biology for instructions. ©2020. The Museum of Southwestern Biology, The University of New Mexico, Albuquerque, NM 87131-0001, USA. ISSN 2380-4580 Managing Editor, Joseph Cook Subject Editor, Emily Jones

This Article is brought to you for free and open access by the Museum of Southwestern Biology at UNM Digital Repository. It has been accepted for inclusion in Occasional Papers by an authorized administrator of UNM Digital Repository. For more information, please contact amywinter@unm.edu, lsloane@salud.unm.edu, sarahrk@unm.edu.

OCCASIONAL PAPERS
OF THE MUSEUM OF
SOUTHWESTERN BIOLOGY

Number 13, pp. 1-58

21 September 2020

**FAUNAL REMAINS FROM ARCHAEOLOGY SITES IN
SOUTHWESTERN NEW MEXICO**

Karen Gust Schollmeyer ^A and S. O. MacDonald ^B

ABSTRACT: This study attempts to create a comprehensive catalog of all known records of faunal remains recovered from 105 archaeological sites located across southwestern New Mexico. These sites range in age from 2000BC to AD 1450. Approximately 250 taxa of mollusks, fishes, amphibians, reptiles, birds and mammals are represented in this compilation. Primary reference materials from published and unpublished sources are included, along with the repositories where relevant collections may be found for potential reexamination by researchers from a variety of fields of interest.

RESUMEN: El presente estudio procura establecer un catálogo exhaustivo de todos los registros conocidos de restos faunísticos recuperados de 105 sitios arqueológicos ubicados en todo el suroeste de Nuevo México. La edad de estos sitios varía entre 2000 a. C. y 1450 d. C. En esta compilación se encuentran representados aproximadamente 250 taxones de moluscos, peces, anfibios, reptiles, aves y mamíferos. Materiales de referencia primaria de fuentes publicadas y no publicadas también se incluyen, junto con los repositorios donde se pueden encontrar colecciones relevantes para una posible reexaminación por investigadores de diversos campos de interés.

^A Archaeology Southwest, 300 North Ash Alley, Tucson, AZ 85701; karen@archaeologysouthwest.org

^B Museum of Southwestern Biology, University of New Mexico, Albuquerque, NM 87131; somacdonald@gilnet.com

Southwestern New Mexico has a long, rich history of archaeological research from early investigations in the late nineteenth century continuing up to the present day. Non-human faunal remains from archaeological sites have been recovered and reported on with varying degrees of focus and rigor. As valuable sources of both anthropological and biological data, information gathered from zooarchaeological research is potentially of value to a wide range of studies such as zoogeography, ecology, and conservation. However, this information is largely published in literature that is not very accessible to researchers outside archaeology. Much of the primary data on animal remains from archaeological sites are published in “gray literature” such as Cultural Resource Management company reports that can be hard for researchers in other fields to locate. In addition, standards of reporting have changed substantially over time, with some reports providing simply “laundry lists” of taxa present in the animal bone assemblage from a site without associated specimen counts (Lyman 2015).

Another challenge is the reporting of unusual taxa, particularly taxa found well outside their present geographic range, without adequate discussion of the reliability of the identification or how the specimen may have ended up in that archaeological site. Interdisciplinary publications can alleviate some of these problems by summarizing zooarchaeological data in formats that make information easier for interested researchers outside archaeology to locate. An excellent example of such a publication is Arthur Harris’s (1993) *Quaternary Vertebrates of New Mexico*, now an active and ongoing website, *Pleistocene Vertebrates of Southwestern USA and Northwestern Mexico* (<https://www.utep.edu/leb/pleistNM/default.htm>). This work has been both an inspiration and in part a model for the presentation of archaeological data that fills some of the time gap between the end of the last ice age and the start of written records.

The data summarized herein should be of interest to biologists, archaeologists, and researchers in related fields interested in examining long-term faunal stasis and change in southwest New Mexico. This information from before the time of European contact has the potential to inform us on how both anthropogenic and nonanthropogenic (naturogenic) environmental changes have affected animal distribution and relative abundance in the study area over time. Among other applications, this information can assist in establishing realistic conservation baselines (e.g., Pauly, 1995; Vera, 2009). It is of particular importance that discussions about establishing such baselines take into account the long history of anthropogenic effects on the landscape, as even relatively non-intensive agriculture and other human activities have been shown to have effects on ecological systems that can persist for centuries (van der Leeuw, 2000; Briggs et al., 2006). Such issues are often best addressed through interdisciplinary research approaches that allow us to identify interesting issues that a specialist in one field working alone is unlikely to recognize.

A secondary benefit is simply providing a list of taxa that have been identified in the study area during the 2000 BC–AD 1450 time period. This provides a springboard for identifying future archaeological research issues, and will also help zooarchaeologists in particular improve their awareness of when an identification is surprising, as well as update the taxonomy and nomenclature used for species identification.

This study represents a comprehensive compilation of data from faunal assemblages from southwestern New Mexico between 2000 BC and AD 1450. The area we’ve chosen to delineate in this study encompasses the major watersheds of the Gila and San Francisco rivers west of the Continental Divide, and the Mimbres River and other endorheic (closed) basins on either side of the current Divide in the lower southwestern corner of the State (Figure 1). These data are derived from published and unpublished sources (see References), and include all archaeological current understandings.

In order to facilitate researchers’ access to the large amount of data compiled on the study area, information is presented in three appendices. **Appendix 1** consists of a listing of all excavated archaeological sites from which animal data are available that include over 25 specimens identified to the genus level or better. Smaller assemblages are also included if they contained specimens not found in virtually every archaeological assemblage in the region (e.g., *Lepus* and *Sylvilagus*). The references therein point researchers to the primary data on these assemblages. Consulting the primary references rather than relying on the summary information presented in this study is of great importance to researchers wishing to gain a detailed

understanding of changes in animal distribution over time and space. A number of factors contribute to variability in the presence, absence, and relative abundance of taxa in an archaeological assemblage. Variation in the excavation techniques, screening procedures and screen sizes used to locate animal bones and mollusk shells in excavated deposits, and the identification, analytical and reporting techniques, and reference collections used by different zooarchaeologists can make comparing assemblages difficult (Driver, 1992; Wolverton, 2015; Lau and Kansa, 2018). In this study, some older reports presented only presence/absence data, and some sites have only mollusk shell data available without reports on vertebrate remains. These are obvious influences, but subtle effects of interanalyst variability exist as well. In addition, taphonomic processes such as fragmentation and decay vary between archaeological sites and can act differently on the remains of different taxa. These effects mean the specimens we find archaeologically cannot reliably be translated into direct counts of complete animals (Lyman, 2008). Anthropogenic and non-anthropogenic environmental influences also affect the presence, absence, and relative abundances of taxa in different ways, as do social factors such as human hunting practices (Schollmeyer and Driver, 2013).

The first column in the Appendix 1 table lists each site by name in alphabetical order, and also lists the site number. Most sites have numbers from the New Mexico Laboratory of Anthropology (LA numbers); a few are numbered in the Arizona State Museum (ASM) numbering system. These numbers link them to the statewide site databases maintained by each state. The next column provides a map number we assigned to each site, allowing users to locate them on a map of the study area (Figure 1). Site dates and time periods are listed in the table as well, with the major time periods briefly summarized below. Although we do not examine chronological changes in any detail in this study, this is a fruitful area for further research, and the information summarized here will allow interested researchers to locate datasets for their time periods of interest.

The references in Appendix 1 point researchers to the primary data on these assemblages. Although some are widely available, others had very limited print runs and may require access to a specialized library or interlibrary loan service. Other references were never published. Researchers needing assistance locating these references (particularly unpublished data) are encouraged to contact Archaeology Southwest (where copies are now on file) and corresponding author KGS. Finally, the repository column lists the location where the archaeological collections from each site are curated. In a few cases, we were sadly unable to locate the collections associated with some older excavations. This represents a great loss of scientific information, as taxon identifications can no longer be verified and data not reported by the original analysts can no longer be retrieved. We hope that some of these lost collections may be located someday (and if you find one, please let us know).

The listed repository is the major location for faunal collections for these sites; some sites have additional, older collections in other repositories. Repository abbreviations are as follows: AFM= Amerind Foundation Museum, Dragoon, AZ. ASM = Arizona State Museum, Tucson, AZ. ASU = Arizona State University School of Human Evolutionary and Social Change Archaeological Collections. ASW = Archaeology Southwest, Tucson, AZ (all listed collections under study there at the time of this publication will be permanently curated at the Arizona State Museum when analyses are completed). CNMA/MIAC = Center for New Mexico Archaeology, Museum of Indian Arts and Culture, Santa Fe, NM. FMNH= Field Museum of Natural History, Chicago, IL. GNF = Gila National Forest, USDA Forest Service, Silver City District Office, Silver City, NM. LA/MIAC = Laboratory of Anthropology Museum of Indian Arts and Culture, Santa Fe, NM. MMA = Maxwell Museum of Anthropology, University of New Mexico, Albuquerque, NM. MU=University of Missouri, Columbia, MO. NMSU = New Mexico State University, Las Cruces, NM. PMAE = Peabody Museum of Archaeology and Ethnology, Harvard University, Cambridge, MA. SNMNM = Smithsonian National Museum of Natural History, Washington, D.C. TARL = Texas Archaeological Research Laboratory, University of Texas at Austin, Texas. UMN=University of Minnesota, Minneapolis and Saint Paul, MN. WACC = Western Archaeological Conservation Center, Tucson, AZ. WNMU=Western New Mexico University Museum, Silver City, NM. Unknown = the authors were unable to ascertain the current repository for these collections.

The listed reference collection is the main comparative reference collection used by the analyst for that assemblage. Analysts are less likely to identify a specimen (especially to species level) if they lack access to a reference collection that contains it. The reference collection abbreviations are the same as those used for repositories, with the following additions: BMUW = Burke Museum, University of Washington, Seattle, WA. CNHM = Chicago Natural History Museum, IL. MSB = Museum of Southwestern Biology, University of New Mexico, Albuquerque, NM. NMOAS = New Mexico Office of Archaeological Studies, Santa Fe, NM. OKAS = Oklahoma Archaeological Survey, Norman, OK. PVCC = Paradise Valley Community College Bioarchaeology Labs, Paradise Valley, AZ. TAM = Texas A&M University, College Station, TX. UT = University of Toronto, Canada. UTEP = Laboratory for Environmental Biology, University of Texas El Paso. UU = University of Utah, Salt Lake City, UT. Unknown = the reference collection used by the original analyst was not reported.

Appendix 2, the second section of this study, lists all of the vertebrate and mollusk taxa recovered from archaeological assemblages in the study area. Each family, genus or species account lists the time periods, major watershed, and sites where that taxon has been recovered, and provides a count (number of bones, with a whole animal or portion such as a wing counted as 1) of that taxon from each assemblage (denoted with a P when present but no count is available). An archaeological assemblage, as used here, is the set of specimens from a specific time period and archaeological site. Thus, a site may be listed more than once under an account, if it yielded animal remains from deposits at that site associated with more than one archaeological time period. This section also contains our comments on taxa of note, particularly taxa whose distributions in the past differ from their historic and modern ranges. These comments also highlight taxa whose identifications we find questionable, or which were identified decades ago and now merit reexamination by a specialist. In this section older taxonomic names used by the original analysts have been upgraded to the currently accepted names. Information on these changes is discussed in each taxon entry, where applicable.

The nomenclature used reflects for the most part current taxonomic understandings from the following sources: for mollusks (Coan and Valentich-Scott, 2012; Williams et al., 2017; MolluscaBase, 2018; WoRMS, 2018), fishes (Sublette et al., 1990; Minckley and Marsh, 2009), amphibians and reptiles (Painter et al., 2017), birds (AOU, 1998; Chesser et al., 2017), and mammals (Bradley et al., 2014).

Finally, **Appendix 3** provides a brief overview of the archaeological time periods used in Appendix 2. The zooarchaeological data presented here come from human contexts, and the presence and abundance of any taxon is due to human decisions and activities in the past rather than directly reflecting the occurrence of these animals on the landscape. This brief overview introduces some of the reasons the representations of certain taxa show changes over time and space in this dataset, allowing researchers to form ideas to be tested with more detailed examinations of animal distribution data.

ACKNOWLEDGMENTS

This project was supported by the National Science Foundation under grant BCS-1524079 (with co-PI Michael Diehl). We thank the many friends and colleagues who have provided access to original datasets and collections or assisted in locating data and reports: Nancy Akins, Roger Anyon, the Arizona State Museum, Cynthia Bettison and the Western New Mexico University Museum, Michael Cannon, Robin Cordero, Robert De Bry, Margaret Dykens, William Gillespie, Patricia Gilman, Michelle Hegmon, Andrew G. Hope, Karl Laumbach, Stephen Lekson, Nicole Mathwich, Jerry Monzingo, Terry L. Myers, Margaret Nelson, Michael Pool, Kathryn Putsavage, Kesler Randall, Barbara Roth, Will Russell, Jakob Sedig, Kari Schmidt, Steve Swanson, Christopher Turnbow, WCRM Inc., and especially Jaye Smith. Adam Sezate translated the abstract. We also thank Joseph Cook, Cyler Conrad, Emily Jones, and one anonymous reviewer, whose suggestions greatly improved this publication.

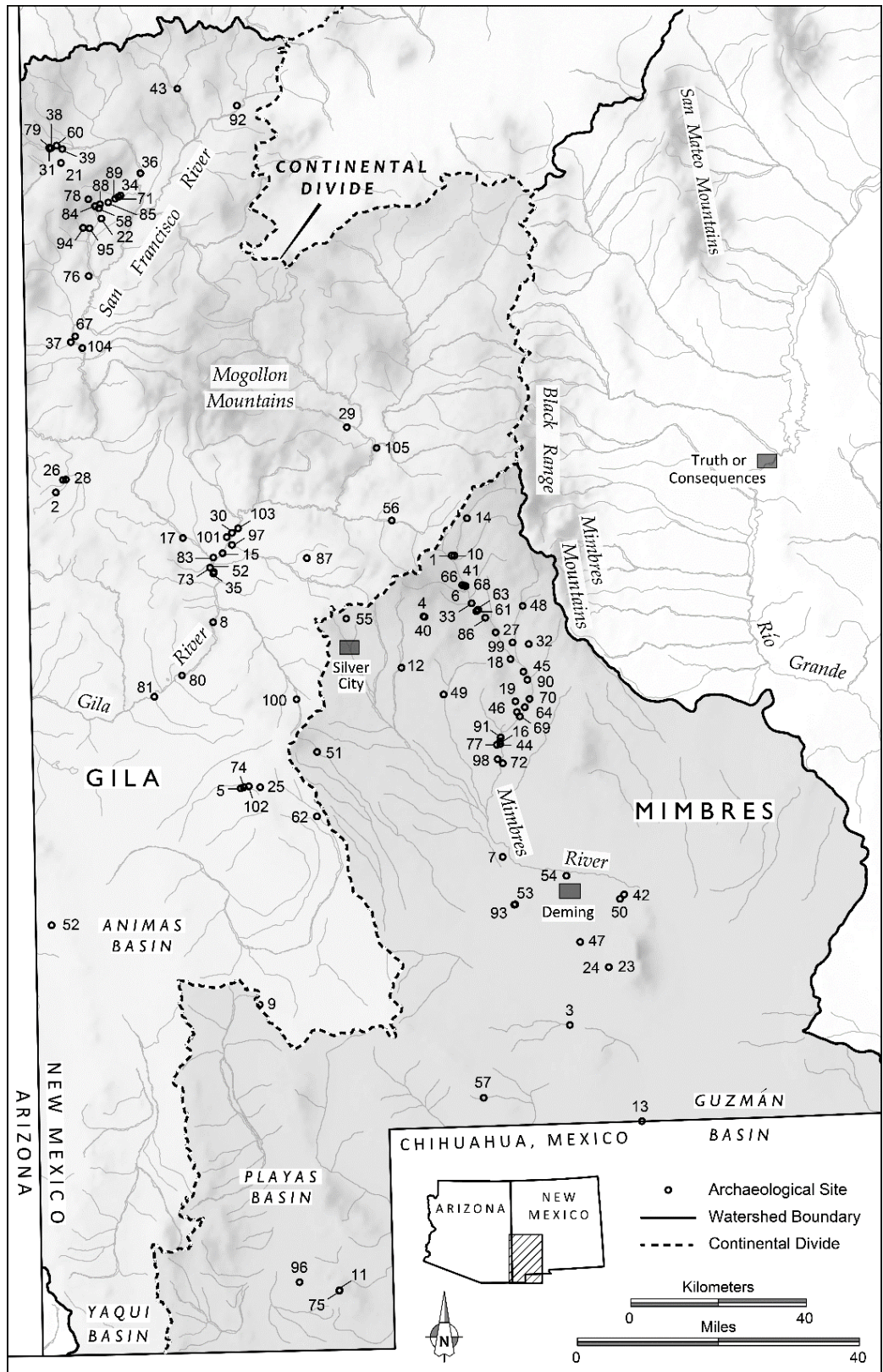


Figure 1. Map of the study area showing archaeological sites contributing assemblages to this study. Map numbers correspond to sites listed in Appendix 1.

REFERENCES

- Agenbroad, L. D. and C. V. Haynes. 1975. *Bison bison* remains at Murray Springs, Arizona. *Kiva* 40:309-313.
- Akins, N. J. 1998. Ormand Fauna. Pp. 335-389, In *The Ormand Village: final report on the 1965-1966 excavation* (L. T. Wallace, ed.) Office of Archaeological Studies, Museum of New Mexico, Santa Fe, New Mexico.
- Akins, N. J. 2015. Faunal Analysis. Pp. 171-184, In *LA 159879: A Late Archaic / Early Agricultural Period Site in the Mimbres Bolson, near Deming, Luna County, New Mexico* (N. J. Akins, M. J. Barbour, D.-R. Robert, and S. C. Lentz, eds.). Office of Archaeological Studies, Museum of New Mexico, Santa Fe, New Mexico.
- Anderson, S. and J. P. Hubbard. 1971. Notes on geographic variation of *Microtus pennsylvanicus* (Mammalia, Rodentia) in New Mexico and Chihuahua. *American Museum Novitates* 2460:1-8.
- Anyon, R., D. Creel, P. A. Gilman, S. A. LeBlanc, M. R. Miller, S. E. Nash, M. C. Nelson, K. J. Putsavage, B. J. Roth, K. G. Schollmeyer, J. W. Sedig, and C. A. Turnbow. 2017. Re-evaluating the Mimbres Region prehispanic chronometric record. *Kiva* 83:316-343.
- AOU. 1998. Check-list of North American Birds (7th edition). American Ornithologists' Union and Allen Press, Inc., Lawrence, Kansas.
- Axtell, R. W. 1977. Ancient playas and their influence on the recent herpetofauna of the northern Chihuahuan Desert. Pp. 493-512, In *Transactions of the Symposium on the Biological Resources of the Chihuahuan Desert Region, United States and Mexico* (R. H. Wauer and D. H. Riskind, eds.). National Park Service Transactions and Proceedings Series Number 3, Washington, D.C.
- Bailey, V. 1931. Mammals of New Mexico. *North American Fauna* 53:1-412.
- Baker, G. S. 1971. The Riverside Site, Grant County, New Mexico. *Southwestern New Mexico Research Reports* 5. Department of Anthropology, Case Western Reserve University, Cleveland, Ohio. 48 p.
- Bequaert, J. C. and W. B. Miller. 1998. The mollusks of the arid Southwest, with an Arizona checklist. University of Arizona Press, Tucson, Arizona. 271 p.
- Berman, M. J. 1978. The Mesa Top Site: an early Mogollon Village in Southeastern Arizona. Cultural Resources Management Division, Department of Sociology and Anthropology, New Mexico State University, Las Cruces, New Mexico. 244 p.
- BISON-M. 2018. BISON-M (Biota Information System of New Mexico) www.bison-m.org, accessed 8 October 2018.
- Blevins, E., S. Jepsen, J. B. Box, D. Nez, J. Howard, A. Maine, and C. O'Brien. 2017. Extinction risk of western North American freshwater mussels: *Anodonta nuttalliana*, the *Anaodonta oregonensis/kennerlyi* clade, *Gonidea angulata*, and *Margaritifera falcate*. *Freshwater Mollusk Biology and Conservation* 20:71-76.
- Bluhm, E. 1957. The Sawmill Site: a Reserve Phase Village, Pine Lawn Valley, Western New Mexico. *Fieldiana* 47.
- Bradfield, W. 1929. Cameron Creek Village, a site in the Mimbres area in Grant County, New Mexico. *Monographs of the School of American Research* No. 1. School of American Research, Santa Fe, New Mexico. 127 p.
- Bradley, R. D., L. K. Ammerman, R. J. Baker, L. C. Bradley, J. A. Cook, R. C. Dowler, C. Jones, D. J. Schmidley, F. B. Stangl, Jr., R. A. Van Den Bussche, and B. Würsig. 2014. Revised checklist of North American mammals north of Mexico. *Occasional Papers of the Museum of Texas Tech University* 327:1-27.
- Brand, D. D. 1937. The natural landscapes of northwestern Chihuahua. 2. *University of New Mexico Bulletin, Geological Series* 5 (2), Albuquerque, New Mexico. 74 p.
- Brand, D. D. 1961. The early history of the range cattle industry in northern Mexico. *Agricultural History* 35:132-139.
- Brattstrom, B. H. 1964. Amphibians and reptiles from cave deposits in south-central New Mexico. *Bulletin of the Southern California Academy of Sciences* 63:93-103.
- Braun, D. E. and S. O. Williams, III. 2015. History of sage-grouse (*Centrocercus* spp.) in New Mexico. *The Southwestern Naturalist* 60:207-212.

- Briggs, J. K., A. Spielmann, H. Schaafsma, K. W. Kintigh, M. Kruse, K. Horn, and K. G. Schollmeyer. 2006. Why ecology needs archaeologists and archaeology needs ecologists. *Frontiers in Ecology and the Environment* 4:180-188.
- Burns, P. E. 1972. The Heron Ruin, Grant County, New Mexico. *Southwestern New Mexico Research Reports No. 7*, Department of Anthropology, Case Western Reserve University, Cleveland. 54 p.
- Cannon, M. D. 1999. The faunal remains from Mogollon Village (LA 11568). Report submitted to the USDA Forest Service, Gila National Forest. Silver City, New Mexico.
- Cannon, M. D. 2000. Large mammal relative abundance in Pithouse and Pueblo Period archaeofaunas from Southwestern New Mexico: Resource Depression Among the Mimbres-Mogollon? *Journal of Anthropological Archaeology* 19:317-347.
- Cannon, M. D. 2010. Introduction to the faunal analysis. Pp. 9.3-9.9, In *Archaeological excavations at Columbus Pueblo (LA 85774)*, a southern Mimbres occupation in Luna County, New Mexico (N. A. Kenmotsu, T. L. Griffith, L. J. Legare, W. Russell, and M. R. Miller, eds.). Geo-Marine Inc., El Paso, Texas.
- Castiglia, P. J. and P. J. Fawcett. 2006. Large Holocene lakes and climate change in the Chihuahuan Desert. *Geology* 34:113-116.
- Chesser, T. R., K. J. Burns, C. Cicero, J. L. Dunn, A. W. Kratter, I. J. Lovette, P. C. Rasmussen, J. V. Remsen, Jr., J. D. Rising, D. F. Stotz, and K. Winker. 2017. Fifty-eighth supplement to the American Ornithological Society's Check-list of North American Birds. *The Auk* 134:751-773.
- Coan, E. and P. Valentich-Scott. 2012. *Bivalve Seashells of Tropical West America, Marine Bivalve Mollusks from Baja California to Northern Perú*. Santa Barbara Museum of Natural History Monographs 6, Studies in Biodiversity 4, Santa Barbara, California. 1258 p.
- Cosgrove, C. B. 1947. Caves of the Upper Gila and Hueco areas in New Mexico and Texas. *Papers of the Peabody Museum of American Archaeology and Ethnology* 24 (2). Harvard University, Cambridge, Massachusetts. 162 p.
- Cosgrove, H. S. and C. B. Cosgrove. 1932 [2004]. The Swarts Ruin, a typical Mimbres Site in Southwestern New Mexico: report of the Mimbres Valley expedition seasons of 1924-1927. *Papers of the Peabody Museum of American Archaeology and Ethnology* 15 (1). Harvard University Press, Cambridge, Massachusetts. 454 p.
- Creel, D. and C. R. McKusick. 1994. Prehistoric macaws and parrots in the Mimbres area, New Mexico. *American Antiquity* 59:510-524.
- Crown, P. L. 2016. Just macaws: a review for the U.S. Southwest/Mexican Northwest. *Kiva* 82:331-363.
- DeBry, R. V. 2008. A diachronic analysis of zooarchaeological remains at Kipp Ruin (LA 153465), Luna County, New Mexico. Unpublished thesis. New Mexico State University, Las Cruces, New Mexico. 253 p.
- Degenhardt, W. G., C. W. Painter, and A. H. Price. 1996. *The amphibians and reptiles of New Mexico*. University of New Mexico Press, Albuquerque, New Mexico. 431 p.
- Di Peso, C. C., J. B. Rinaldo, and G. J. Fenner. 1974. *Casas Grandes: a fallen trading center of the Gran Chichimeca*. Amerind Foundation, Dragoon, Arizona, and Northland Press, Flagstaff, Arizona. 1076 p.
- Diehl, M. W. 2005. Early Agricultural Period foraging and horticulture in Southern Arizona: implications from plant remains. Pp. 73-90, In *Subsistence and Resource Use Strategies of Early Agricultural Communities in Southern Arizona* (M. W. Diehl, ed.). Center for Desert Archaeology, Tucson, Arizona.
- Diehl, M. W. and S. A. LeBlanc. 2001. Early Pithouse villages of the Mimbres Valley and beyond: the McAnally and Thompson Sites in their cultural and ecological contexts. *Peabody Museum of Archaeology and Ethnology*, Cambridge, Massachusetts. 144 p.
- Dragoo, J. W. and R. K. Wayne. 2003. Systematics and population genetics of swift and kit foxes. Pp. 207-222, In *The swift fox: ecology and conservation of swift foxes in a changing world* (M. A. Sovada and L. Carbyn, eds.). Canadian Plains Research Center, University of Regina, Saskatchewan, Canada.
- Driver, J. C. 1992. Identification, classification and zooarchaeology. *Circaea* 9:35-47.

- Duncan, G. A. 2000. Faunal remains from Forest Home, Wood Canyon, and Beargrass. Pp. 487-508, In *A highway through time: archaeological investigations along NM 90, in Grant and Hidalgo Counties, New Mexico* (C. A. Turnbow, ed.). TRC, Albuquerque, New Mexico.
- Edwards, T. A., E. Karl, M. Vaughn, P. C. Rosen, C. M. Torres, and R. W. Murphy. 2016. The desert tortoise trichotomy: Mexico hosts a third, new sister-species of tortoise in the *Gopherus morafkai*-*G. agassizii* group. *ZooKeys* 562:131-158.
- Emslie, S. D. 1981. Prehistoric agricultural ecosystems: avifauna from Pottery Mound, New Mexico. *American Antiquity* 46:853-861.
- Findley, J. S., A. H. Harris, D. E. Wilson, and C. Jones. 1975. *Mammals of New Mexico*. University of New Mexico Press, Albuquerque, New Mexico. 360 p.
- Fitting, J. E. 1971a. Excavations at MC 110, Grant County, New Mexico. *Southwestern Research Reports* 2, Department of Anthropology, Case Western Reserve University, Cleveland, Ohio. 33 p.
- Fitting, J. E. 1971b. The Hermanas Ruin, Luna County, New Mexico. *Southwestern New Mexico Research Reports No 3 Anthropology Dept.*, Case Western Reserve University Cleveland, Ohio. 44 p.
- Fitting, J. E. 1973. An early Mogollon community: a preliminary report on the Winn Canyon Site. *The Artifact* 11.
- Forrester, R. E. 1992. Archaeological investigations at the X-S-X Ranch, Northern Grant County, New Mexico. Manuscript on file, Archaeology Southwest, Tucson, Arizona.
- Frase, B. A. and R. S. Hoffman. 1980. *Marmota flaviventris*. *Mammalian Species* 135:1-8.
- Frey, J. K. 2004. Taxonomy and distribution of the mammals of New Mexico: an annotated checklist. *The Museum of Texas Tech University Occasional Papers* 240:1-32.
- Geluso, K. 2009. Distributional records of seven species of mammal in southern New Mexico. *The Museum of Texas Tech University Occasional Papers* 287:1-7.
- Geluso, K. 2016. Mammals of the active floodplains and surrounding areas along the Gila and Mimbres Rivers, New Mexico. Report on file, New Mexico Department of Game and Fish, Santa Fe, New Mexico.
- Gillespie, W. B. 1987. Vertebrate remains from LA 5421, the Saige-McFarland Site. Manuscript on file, Archaeology Southwest, Tucson, Arizona.
- Guerra, T. M. 1998. Genetic analysis of the Texas horned lizard (*Phrynosoma cornutum*): implications for conservation. Unpublished thesis, Texas A&M University, College Station, Texas. 84 p.
- Hafner, J. C. and M. S. Hafner. 1983. Evolutionary relationships of Heteromyid rodents. *Great Basin Naturalist Memoirs* 7:3-29.
- Hall, E. R. 1981. *The mammals of North America*. Wiley Interscience, New York. 1181 p.
- Hall, E. R. and K. Kelson. 1959. *The mammals of North America*. Ronald Press, New York. 1162 p.
- Harris, A. H. 1970. Past climate of the Navajo Reservoir District. *American Antiquity* 35:374-377.
- Harris, A. H. 1973. The fauna of Bobcat Cave. Pp. 206-266, In *Bobcat Cave: a contribution to the ethnohistory of the Spanish Borderlands* (E. B. McCluney, ed.). Unpublished dissertation, Texas Christian University, Fort Worth, Texas.
- Harris, A. H. 1989. The New Mexican Late Wisconsin—east versus west. *National Geographic Research* 5:205-217.
- Harris, A. H. 1993. Quaternary Vertebrates of New Mexico. Pp. 179-197, In *Vertebrate Paleontology in New Mexico* (S. G. Lucas and J. Zidek, eds.). New Mexico Museum of Natural History and Science Bulletin 2, Albuquerque, New Mexico.
- Harris, A. H. 2018. Pleistocene vertebrates of southwestern USA and northwestern Mexico. UTEP Biodiversity Collections, Department of Biological Sciences, and Centennial Museum, University of Texas at El Paso. Available at <https://www.utep.edu/leb/pleistNM/default.htm>, accessed January 13, 2018.
- Harrold, M. N. and R. P. Guralnick. 2010. *Freshwater mollusks of Colorado*. Colorado Division of Wildlife, Denver, Colorado. 132 p.
- Heller, M. M. 1976. Zooarchaeology of Tularosa Cave, Catron County, New Mexico. Unpublished thesis. University of Texas at El Paso. 159 p.

- Hemphill, C. B. 1983. The Eaton Site: Late Archaic in the Upper Gila. Unpublished thesis, University of Oregon, Eugene, Oregon. 69 p.
- Hinesley, L. L. and C. S. Thaler, Jr. 1977. Karyotype and distribution of the southern pocket gopher, *Thomomys umbrinus emotus* Goldman. *Journal of Mammalogy* 58:235-237.
- Hoffmeister, D. F. 1986. Mammals of Arizona. University of Arizona Press, Tucson. 602 p.
- Hope, A. G., J. L. Malaney, and K. C. Bell. 2016. Revision of widespread red squirrels (genus: *Tamiasciurus*) highlights the complexity of speciation within North American forests. *Molecular Phylogenetics and Evolution* 100:857-858.
- Hough, W. 1914. Culture of the ancient pueblos of the Upper Gila Region, New Mexico and Arizona. Smithsonian Institution, Washington, D.C. 138 p.
- Howell, A. H. 1915. Revision of the American marmots. *North American Fauna* 37:1-80.
- Huffer, D. J. 2013. A spatial analysis and zooarchaeological interpretation of archaeological bison remains in the Southwest and the wildlife management implications for the House Rock Valley bison herd in Grand Canyon National Park, Arizona. Unpublished thesis, University of Arizona, Tucson, Arizona. 135 p.
- Huntley, D. L., R. Jones, K. Dungan, J. B. Hill, J. J. Clark, and K. G. Schollmeyer. 2019. Final report on 2008 and 2009 investigations at the 3-Up Site (LA 150373) and Gamalstad (LA 164472), Mule Creek, New Mexico. *Anthropological Papers No. 50. Archaeology Southwest*, Tucson, Arizona. 219 p.
- Jackson, D. J. and J. A. Cook. 2020. A precarious future for distinctive populations of meadow voles (*Microtus pennsylvanicus*). *Journal of Mammalogy* 101:56-67.
- Jennings, M. R. 1987. Status of the western painted turtle (*Chrysemys picta bellii*) in Arizona. *Journal of the Arizona-Nevada Academy of Science* 22:129-133.
- Jones, A. K. 2016. Mammals of the Greater Gila Region. Unpublished thesis, University of New Mexico, Albuquerque, New Mexico. 228 p.
- Jones, J. G., T. M. Kearns, and J. L. McVickar. 2012. Archaeological investigations for the AT&T Nexgen/Core Project: New Mexico Segment. *Western Cultural Resource Management*, Las Cruces, New Mexico. 444 p.
- Kayser, D. W. 1972. Whiskey Creek Project: archaeological highway salvage along State Highway 32 in Apache Creek. *Laboratory of Anthropology Note 57. Museum of New Mexico*, Santa Fe, New Mexico. 45 p.
- Kearns, T. M., C. K. Walth, G. M. Brown, and K. McDonald. 1999. Osteological analyses. Pp. 491-519, In *South Waste Rock Expansion: archaeological data recovery in the Buckhorn Gulch area at the Continental Mine, Grant County, New Mexico* (G. M. Brown, ed.). Report to the Bureau of Land Management, Las Cruces Field Office, Western Cultural Resource Management, Inc., Farmington, New Mexico.
- Lambert, M. F. and J. R. Ambler. 1961. A survey and excavation of caves in Hidalgo County, New Mexico. *Monograph No. 25. School of American Research*, Santa Fe, New Mexico. 107 p.
- Lange, A. L. 1956. Woodchuck remains in northern Arizona caves. *Journal of Mammalogy* 37:289-291.
- Langenwalter, P. E. 1979. Prehistoric record of muskrat (*Ondatra zibethicus*) in the Mimbres drainage. *Journal of Mammalogy* 60:857-858.
- Lau, H. and S. W. Kansa. 2018. Zooarchaeology in the era of big data: contending with interanalyst variation and best practices for contextualizing data for informed reuse. *Journal of Archaeological Science* 95:23-39.
- Lee, D. S. 2008. The occurrence of desert tortoises in southeastern Arizona and adjacent southwestern New Mexico. *Bulletin of the Chicago Herpetological Society* 43:125-129.
- Lekson, S. H. 2002. Salado archaeology of the Upper Gila, New Mexico. *Anthropological Papers of the University of Arizona No. 67*, University of Arizona Press, Tucson. 103 p.
- Lemos-Espinal, J. A., G. R. Smith, G. A. Woolrich-Piña, and A. Cruz. 2017. Amphibians and reptiles of the state of Chihuahua, Mexico, with comparisons with adjoining states. *ZooKeys* 658:105-130.
- Lightfoot, K. G. 1984. The Duncan Project: a study of the occupation duration and settlement pattern of an early Mogollon pithouse village. *Anthropological Field Studies Office of Cultural Resource Management*, Arizona State University, Tempe, AZ. 145 p.

- Ligon, J. S. 1961. New Mexico birds and where to find them. University of New Mexico Press, Albuquerque. 360 p.
- List, R., G. Caballos, C. Curtin, P. J. P. Gogan, and J. C. Truett. 2007. Historic distribution and challenges to bison recovery in the northern Chihuahuan Desert. *Conservation Biology* 21:1487-1494.
- List, R. O., R. W. Pergams, J. Pacheco, J. Cruzado, and G. Ceballos. 2010. Genetic divergence of *Microtus pennsylvanicus chihuahuensis* and conservation implications of marginal population extinctions. *Journal of Mammalogy* 91:1093-1101.
- List, R. and V. Solís. 2008. Diagnóstico sobre el estado actual de la población de Bisonte Americano (*Bison bison*) en la frontera entre México y Estados Unidos y recomendaciones para su conservación y manejo. INE/A1-002/2008 Instituto Nacional de Ecología, Mexico. [With English abstract.]
- López-González, C. and D. F. García-Mendoza. 2012. A checklist of the mammals (Mammalia) of Chihuahua, Mexico. *Check List* 8:1122-1133.
- Lyman, R. L. 1983. Prehistoric extralimital records for *Pappogeomys castanops* (Geomyidae) in northwestern New Mexico. *Journal of Mammalogy* 64:502-505.
- Lyman, R. L. 2015. The history of "Laundry Lists" in North American Zooarchaeology. *Journal of Anthropological Archaeology* 39:42-50.
- Lyman, R. L. 2008. Quantitative paleozoology. Cambridge University Press, Cambridge. 348 p.
- Malaney, J. L., J. K. Frey, and J. A. Cook. 2012. The biogeographic legacy of an imperiled taxon provides a foundation for assessing lineage diversification, demography and conservation genetics. *Diversity and Distributions* 18:689-703.
- Mantooth, S. J., D. J. Hafner, R. W. Bryson, and B. R. Riddle. 2013. Phylogeographic diversification of antelope squirrels (*Ammospermophilus*) across North American deserts. *Biological Journal of the Linnean Society* 109:949-967.
- Martin, J. M., R. A. Martin, and J. I. Mead. 2017. Late Pleistocene and Holocene bison of the Colorado Plateau. *The Southwestern Naturalist* 62:14-28.
- Martin, P. S. 1943. The SU Site: excavations at a Mogollon village, western New Mexico, 1941. *Anthropological Series* 32(2), Field Museum of Natural History, Chicago. 382 p.
- Martin, P. S. and J. B. Rinaldo. 1950. Sites of the Reserve Phase, Pine Lawn Valley, western New Mexico. *Fieldiana* 38.
- Martin, P. S., J. B. Rinaldo, and E. Antevs. 1949. Cochise and Mogollon Sites, Pine Lawn Valley, western New Mexico. *Fieldiana* 38:1-232.
- Martin, P. S., J. B. Rinaldo, E. Bluhm, H. C. Culter, and R. J. Grange. 1952. Mogollon cultural continuity and change, the stratigraphic analysis of Tularosa and Cordova caves. *Fieldiana* 40.
- Martin, P. S., J. B. Rinaldo, E. A. Bluhm, and H. C. Culter. 1956. Higgins Flat Pueblo western New Mexico. *Fieldiana* 45:1-218.
- McCarthy, E. M. 2013. Zooarchaeological analysis of material excavated in 2009 from the 76 Draw Site (LA 156980), Luna County, New Mexico. Unpublished thesis, University of Missouri-Columbia, Missouri. 113 p.
- McCluney, E. B. 1973. Bobcat Cave: a contribution to the ethnohistory of the Spanish Borderlands. Unpublished dissertation, Texas Christian University, Texas. 343 p.
- McKusick, C. 1986. Faunal Remains. Pp. 245-272, In *The archaeology of Gila Cliff dwellings* (K. M. Anderson, G. J. Fenner, D. P. Morris, G. A. Teague, and C. McKusick, eds.). Western Archaeological and Conservation Center, National Park Service, Tucson.
- McKusick, C. 1996. An analysis of miscellaneous faunal materials from the Wind Mountain Locus and analyses of Rideout Locus faunal materials. Pp. 407-439, In *Mimbres Mogollon archaeology: Charles C. Di Peso's excavations at Wind Mountain* (A. I. Woosley and A. J. McIntyre, eds.). Amerind Foundation, Dragoon, Arizona, and University of New Mexico Press, Albuquerque.
- Merrill, W. L. and C. López-González. 2007. Humans and other mammals in Prehispanic Chihuahua. Pp. 53-62, In *Human and faunal relationships reviewed: an archaeozoological approach* (E. Corona and J. Arroyo-Cabrales, eds.). *British Archaeological Reports International Series* (1627), Oxford.
- Messing, H. J. 1986. A late Pleistocene-Holocene fauna from Chihuahua. *The Southwestern Naturalist* 31:277-288.

- Mikesic, D. G. and C. T. LaRue. 2003. Recent status and distribution of red foxes (*Vulpes vulpes*) in northeastern Arizona and southeastern Utah. *The Southwestern Naturalist* 48:624-634.
- Mills, J. P. and V. M. Mills. 1977. The Red Rock Site: a Mimbres village on the Gila River, Grant County, Western New Mexico. Pp. 36-59, In *Transactions of the 12th Regional Archaeological Symposium for Southwestern New Mexico and Western Texas* El Paso Archaeological Society, El Paso.
- Minckley, W. L., D. A. Hendrickson, and C. E. Bond. 1986. Geography of Western North American freshwater fishes: description and relationships to intracontinental tectonism. Pp. 519-613, In *The zoogeography of North American freshwater fishes* (C. H. Hocutt and E. O. Wiley, eds.). Wiley-Interscience Publication, John Wiley and Sons, New York.
- Minckley, W. L. and P. C. Marsh. 2009. *Inland fishes of the greater Southwest: chronicle of a vanishing biota*. University of Arizona Press, Tucson. 426 p.
- Minnis, P. E. 1985. *Social adaptation to food stress: a prehistoric Southwestern example*. University of Chicago Press, Chicago, Illinois. 239 p.
- MolluscaBase. 2018. MolluscaBase. Available at www.molluscabase.org, accessed 15 March 2019.
- Murphy, R. W., K. H. Berry, T. Edwards, A. E. Leviton, A. Lathrop, and J. D. Riedle. 2011. The dazed and confused identity of Agassiz's land tortoise, *Gopherus agassizii* (Testudines, Testudinidae), with the description of a new species, and its consequences for conservation. *ZooKeys* 113:39-71.
- Myers, T. L. 2009. Pre-historical, historical, and recent distribution of freshwater mussels (Unionidae: *Anodonta*) in the Colorado River and Río Yaqui basins (with notes on Guzmán Basin, Río Sonoyta, Río Asunción/Magdalena, and Río Grande). Arizona Game and Fish Department, Phoenix, Arizona.
- Neiswenter, S. A. and B. R. Riddle. 2011. Landscape and climatic effects on the evolutionary diversification of the *Perognathus fasciatus* species group. *Journal of Mammalogy* 92:982-993.
- Nelson, B. A. and S. A. LeBlanc. 1986. *Short-term sedentism in the American Southwest: the Mimbres Valley Salado*. Maxwell Museum of Anthropology and University of New Mexico Press, Albuquerque, New Mexico. 307 p.
- Nisengard, J. E. 2000. Faunal analysis at LA 5841. Pp. 69-81, In *Late Mimbres Pueblos in peripheral areas: final report on test excavations at LA 5841 (Cooney Ranch #1), Middle Fork of the Mimbres River, southwestern New Mexico, August 7-19, 1999* (R. J. Stokes, ed.). Report to the Laboratory of Anthropology, Santa Fe, New Mexico.
- NMDGF. 2006. *Comprehensive wildlife conservation strategy for New Mexico*. New Mexico Department of Game and Fish, Santa Fe, New Mexico. 526 p.
- NMDGF. 2018. *Threatened and endangered species of New Mexico: 2018 Biennial Review*. New Mexico Department of Game and Fish, Santa Fe, New Mexico. 155 p.
- Oakes, Y. R. 1999. Faunal assemblages of the Mogollon Highlands. Pp. 245-305, In *Archaeology of the Mogollon Highlands: settlement systems and adaptations. Volume 4. Ceramics, miscellaneous artifacts, bioarchaeology, bone tools, and faunal analysis* (Y. R. Oakes and D. A. Zamora, eds.). *Archaeology Notes* 232. Museum of New Mexico Office of Archaeological Studies, Santa Fe, New Mexico.
- Olsen, J. 1990. Vertebrate faunal remains from Grasshopper Pueblo, Arizona. *Anthropological Papers* No. 83. Museum of Anthropology, University of Michigan, Ann Arbor. 200 p.
- Olsen, S. L. and J. W. Olsen. 1996. An analysis of faunal remains from Wind Mountain. Pp. 389-406, In *Mimbres Mogollon archaeology: Charles C. Di Peso's excavations at Wind Mountain* (A. I. Woosley and A. J. McIntyre, eds.). Amerind Foundation, Dragoon, Arizona, and University of New Mexico Press, Albuquerque, New Mexico.
- Page, L. M., C. C. Baldwin, and H. Espinosa-Perez. 2017. Taxonomy of *Gila* in the Lower Colorado River Basin of Arizona and New Mexico. *Fisheries* 42:456-460.
- Painter, C. W., J. N. Stuart, J. T. Giermakowski, and L. J. S. Pierce. 2017. Checklist of the amphibians and reptiles of New Mexico, USA, with notes on taxonomy, status, and distribution. *Western Wildlife* 4:29-60.
- Paroz, Y. M. and D. L. Propst. 2007. Distribution of spikedace, loach minnow, and chub species in the Gila River Basin, New Mexico 1908–2007. Report to U.S. Fish and Wildlife Service and

- U.S. Bureau of Reclamation. New Mexico Department of Game and Fish, Santa Fe, New Mexico. 27 p.
- Pauly, D. 1995. Anecdotes and the shifting baseline syndrome of fisheries. *Trends in Ecology & Evolution* 10:430.
- Powell, D. 2015. Preliminary analysis of faunal remains from the Harris Site. Pp. 364-380, In *Archaeological investigations at the Harris Site (LA 1867), Grant County, New Mexico* (B. J. Roth, ed.). Report on file, University of Nevada Las Vegas, Las Vegas, Nevada.
- Powell, S. and P. E. Langenwalter. 1977. Mimbres Foundation faunal analysis data sheets. Dataset on file, Archaeology Southwest. Tucson, Arizona.
- Powell, S. J. 1977. Changes in prehistoric hunting patterns resulting from agricultural alteration of the environment: a case study from the Mimbres River area, New Mexico. Unpublished thesis, University of California, Los Angeles, California. 87 p.
- Propst, D. L. 1999. Threatened and endangered fishes of New Mexico. New Mexico Department of Game and Fish Technical Report No. 1, Santa Fe, New Mexico. 84 p.
- Railey, J. A. 2000. Peterson Canyon, LA 121159 (USFS No.: AR-03-06-07-00579). Pp. 221-238, In *A highway through time: archaeological investigations along NM 90, in Grant and Hidalgo counties, New Mexico* (C. A. Turnbow, ed.). TRC, Albuquerque.
- Reed, E. K. 1955. Bison beyond the Pecos. *Texas Journal of Science* 7:130-135.
- Rosenthal, J. and M. R. J. Forstner. 2014. Effects of Plio-Pleistocene barrier on Chihuahuan Desert herpetofauna. Pp. 269-282, In *Proceedings of the Sixth Symposium on the Natural Resources of the Chihuahuan Desert Region, October 14-17* (C. A. Hoyt and J. Karges, eds.). Chihuahuan Desert Research Institute, Fort Davis, Texas.
- Sanchez, J. L. 1992. Mimbres faunal subsistence A.D. 200-1150, Mimbres Valley, Grant and Luna Counties, New Mexico. Unpublished thesis, Department of Anthropology, Texas A&M University, Texas. 132 p.
- Sandor, J. A. and P. L. Gersper. 1988. Evaluation of soil fertility in some prehistoric agricultural terraces in New Mexico. *Agronomy Journal* 80:846-850.
- Sayre, N. F. 2002. *Ranching, endangered species, and urbanization in the Southwest: species of capital*. University of Arizona Press, Tucson, Arizona. 278 p.
- Scarborough, L. L. M. 1986. Zooarchaeological investigation of climatic change at Bat Cave, San Agustin Plains, Catron County, New Mexico. Unpublished thesis, University of Texas at El Paso, Texas. 152 p.
- Scarborough, L. L. M. and A. H. Harris. 1985. Archaeological excavations: a plea for a more refined technique. *The Artifact* 23:179-185.
- Schmidt, K. M. 2010. Faunal remains from excavations at La Gila Encantada. Pp. 133-143, In *Archaeological Investigations at La Gila Encantada (LA 113467), Grant County, New Mexico* (B. J. Roth, ed.). Report submitted to The Archaeological Conservancy, Albuquerque.
- Schollmeyer, K. G. 2015. Vertebrate fauna from Woodrow Ruin, LA 2454. Report on file, Archaeology Southwest, Tucson, Arizona. 12 p.
- Schollmeyer, K. G. 2016. Vertebrate fauna from the Black Mountain site, LA 49. Report on file, Archaeology Southwest, Tucson, Arizona. 14 p.
- Schollmeyer, K. G. 2017. Vertebrate fauna from the Fornholt Site, LA 164471. Report on file, Archaeology Southwest, Tucson, Arizona. 17 p.
- Schollmeyer, K. G. 2018. Long term interactions of people and animals in the Mimbres Region, Southwest New Mexico, AD 200-1450. *Kiva* 84:51-84.
- Schollmeyer, K. G. and J. C. Driver. 2013. Settlement patterns, source-sink dynamics, and artiodactyl hunting in the prehistoric U.S. Southwest. *Journal of Archaeological Method and Theory* 20:448-487.
- Schönhuth, S., A. Perdices, L. Lozano-Vilano, F. J. Garcia-de-León, H. Espinosa, and R. L. Mayden. 2014. Phylogenetic relationships of North American western chubs of the genus *Gila* (Cyprinidae, Teleostei), with emphasis on southern species. *Molecular Phylogenetics and Evolution* 70:210-230.
- Schriever, B. A. 2002. Mimbres-Mogollon mobility: the Late Pithouse Period and the Florida Mountain Site, Luna County, New Mexico. Unpublished thesis, University of Oklahoma, Norman, Oklahoma. 405 p.

- Semanko, A. L. 2020. Prehistoric Southwest dogs: a case study from Kipp Ruin. Unpublished thesis, New Mexico State University, Las Cruces. 283 p.
- Shaffer, B. S. 1991. The economic importance of vertebrate faunal remains from the NAN Ruin (LA 15049), a Classic Mimbres site, Grant County, New Mexico Unpublished thesis, Department of Anthropology. Texas A&M University, College Station, Texas. 282 p.
- Shaffer, B. S. and J. A. Neely. 1992. Intrusive anuran remains in pit house features: a test of methods. *Kiva* 57:343-351.
- Silverbird, K. 1980. Appendix D - faunal remains. Pp. 109-120, In Emergency survey and excavation in southwestern New Mexico (K. W. Laumbach, ed.). Cultural Resources Management Division, Department of Sociology and Anthropology, New Mexico State University, Las Cruces.
- Smartt, R. A. 1977. The ecology of Late Pleistocene and Recent *Microtus* from South-Central and Southwestern New Mexico. *The Southwest Naturalist* 22:1-19.
- Spielmann, K. A., M. J. Schoeninger, and K. Moore. 1990. Plains-Pueblo interaction and human diet at Pecos Pueblo, New Mexico. *American Antiquity* 55:745-765.
- Sublette, J. E., M. D. Hatch, and M. Sublette. 1990. The fishes of New Mexico. The University of New Mexico Press, Albuquerque, New Mexico. 393 p.
- Sullivan, N. C. and D. Berg. 1983. Faunal remains at the Kartchner Site: a Mimbres-Mogollon Pueblo in southwestern New Mexico. *Kiva* 49:105-110.
- Taylor, D. W. 1987. Fresh-water molluscs from New Mexico and vicinity. *New Mexico Bureau of Mines and Mineral Resources Bulletin* 116.
- Truett, J. C. 1996. Bison and elk in the American Southwest: in search of the pristine. *Environmental Management* 20:195-206.
- Truett, J. C., D. P. Gober, A. E. Ernst, R. List, H. Whitlaw, C. L. Hayes, G. Schmitt, and W. E. Van Pelt. 2014. Prairie dogs in the Chihuahuan Desert: history, ecology, conservation. Pp. 211-240, In Proceedings of the sixth symposium on the natural resources of the Chihuahuan Desert region, October 14–17 (C. A. Hoyt and J. Karges, eds.). Chihuahuan Desert Research Institute, Fort Davis, Texas.
- Turgeon, D. D., J. F. J. Quinn, A. E. Bogan, E. V. Coan, F. G. J. Hochberg, W. G. Lyons, P. M. Mikkelsen, R. J. Neves, C. F. E. Roper, G. Rosenberg, B. Roth, A. Scheltema, F. G. Thompson, M. Vecchione, and J. D. Williams. 1998. Common and scientific names of aquatic invertebrates from the United States and Canada: Mollusks (2nd edition). American Fisheries Society, Special Publication 26, Bethesda, Maryland. 526 p.
- Turner, T. F., T. J. Pilger, M. J. Osborne, and D. L. Propst. 2019. Rio Grande sucker *Pantosteus plebeius* is native to the Gila River Basin. *Copeia* 107(3): 393-403.
- Turtle Taxonomy Working Group [A.G.J. Rhodin, J.B. Iverson, R. Bour, U. Fritz, A. Georges, H.B. Shaffer, and P.P. van Dijk]. 2017. Turtles of the world: annotated checklist and atlas of taxonomy, synonymy, distribution, and conservation status (8th ed.). In Conservation biology of freshwater turtles and tortoises: a compilation project of the IUCN/SSC Tortoise and Freshwater Turtle Specialist Group (A.G.J. Rhodin, J.B. Iverson, P.P. van Dijk, R.A. Saumure, K.A. Buhlmann, P.C.H. Pritchard, and R.A. Mittermeier, eds.). *Chelonian Research Monographs* 7:1–292.
- Urban, S. F. 1981. Mimbres Foundation shell analysis data sheets. Dataset on file, Archaeology Southwest. Tucson, Arizona.
- van der Leeuw, S. E. 2000. Land degradation as a socio-natural process. Pp. 357-384, In *The way the wind blows: climate, history, and human action* (R. J. McIntosh, J. A. Tainter, and S. K. McIntosh, eds.). Columbia University Press, New York.
- Van Devender, T. R., K. B. Moodie, and A. H. Harris. 1976. The desert tortoise (*Gopherus agassizi*) in the Pleistocene of the northern Chihuahuan desert. *Herpetologica* 32:298-304.
- Van Devender, T. R. and R. D. Worthington. 1977. The herpetofauna of Howell's Ridge Cave and the paleoecology of the northwestern Chihuahuan Desert. Pp. 85-106, In *Transactions of the symposium on the biological resources of the Chihuahuan Desert region, United States and Mexico* (R. H. Wauer and D. H. Riskind, eds.). National Park Service Proceedings and Transactions Series No. 3, Washington, D.C.

- Varela-Romero, A., D. A. Hendrickson, G. Yepiz-Plascencia, J. E. Brooks, and D. A. Neely. 2011. Status of the Yaqui catfish (*Ictalurus pricei*) in the United States and northwestern Mexico. *The Southwestern Naturalist* 56:277-285.
- Vera, F. W. M. 2009. The Shifting Baseline Syndrome in Restoration Ecology. Pp. 98-110, In *Restoration and history: the search for a usable environmental past* (M. Hall, ed.). Routledge Taylor & Francis Group, New York, New York.
- Viriden-Lange, C. H. 2015. Notes for Dinwiddie Site shell material, 2013-2015 field school seasons. Report on file, Archaeology Southwest, Tucson, Arizona.
- Viriden-Lange, C. H. 2017. Shell material from LA 39315, 2016-2017 field school seasons. Report on file, Archaeology Southwest, Tucson, Arizona.
- Wallace, L. T. 1998. The Ormand Village: final report on the 1965-1966 excavation. *Archaeology Notes* 229, Office of Archaeological Studies, Museum of New Mexico, Santa Fe. 444 p.
- Williams, J. D., A. E. Bogan, and R. S. Butler. 2017. A revised list of the freshwater mussels (Mollusca: Bivalvia: Unionida) of the United States and Canada. *Mollusk Biology and Conservation* 20:33-58.
- Wiseman, R. 1998. Limited excavations at LA 83772, a multicomponent site along NM-90, White Signal, Grant County, New Mexico. *Archaeology Notes* 191. Museum of New Mexico Office of Archaeological Studies, Santa Fe. 107 p.
- Wolverton, S. 2013. Data quality on zooarchaeological faunal identification. *Journal of Archaeological Method and Theory* 20:381-396.
- WoRMS, E. B. 2018. World Register of Marine Species. Available at www.marinespecies.org, accessed 7 December 2018.

APPENDIX 1: ARCHAEOLOGICAL SITES

Site	Map No.	Watershed	Elevation (m)	Dates	Period	References	Reference Collection	Specimen Repository
Three Circle (LA 53)	1	Mimbres	1945	AD550-1000	Late Pithouse	Urban, 1981	unknown	MMA
3-Up (LA 150373)	2	Gila	1615	AD1300-1450	Salado	Huntley et al., 2019	ASM	ASW
76 Draw (LA 156980)	3	Mimbres	1280	AD1130-1450	Animas	McCarthy, 2013	MU	MU
Badger Ruin (LA 111395)	4	Mimbres	2073	AD1000-1130	Classic Mimbres	Kearns et al., 1999	unknown	LA/MIAC
Beargrass (LA 121158)	5	Gila	1737	AD200-1000	Pithouse	Duncan, 2000	MSB	LA/MIAC
Beauregard (LA 18888)	6	Mimbres	1920	AD550-1000	Late Pithouse	Powell and Langenwalter, 1977	unknown	MMA
Black Mountain (LA 49)	7	Mimbres	1372	AD1130-1300	Black Mountain	Schollmeyer, 2016	ASM	LA/MIAC
Blacks Bluff (LA 34787)	8	Gila	1341	AD1300-1450 AD1000-1130	Salado Classic Mimbres	Schollmeyer, 2016	ASM	Private collection
Bobcat Cave (LA 9071)	9	Mimbres	1509	2000BC- AD1450	Archaic-Animas	McCluney, 1973; Harris, 1993	MU	LA/MIAC
Bradsby (LA 78337)	10	Mimbres	2330	AD550-1000	Late Pithouse	Urban 1981	unknown	MMA
Buffalo Cave (LA 5690)	11	Mimbres	1524	AD550-1000	Late Pithouse	Lambert and Ambler, 1961	SNMNM	LA/MIAC
Cameron Creek Village (LA 190)	12	Mimbres	1768	AD550-1130	Late Pithouse/ Classic Mimbres	Bradfield, 1929	unknown	LA/MIAC and UMN
Columbus Pueblo (LA 85774)	13	Mimbres	1219	AD1000-1130	Classic Mimbres	Cannon, 2010	UU	LA/MIAC
Cooney Ranch #1 (LA 5841)	14	Mimbres	2134	AD1000-1130	Classic Mimbres	Nisengard, 2000	OKAS	MMA
DeFausal/Kartchner/G-12 (LA 34779)	15	Gila	1402	AD1000-1130	Classic Mimbres	Sullivan and Berg, 1983	UT	Private collection
Dike/Levee (LA 14983)	16	Mimbres	1536	AD1200-1300	Tularosa	Urban 1981	unknown	MMA
Dinwiddie (LA 106003)	17	Gila	1433	AD 1300-1450	Salado	Viriden-Lange, 2015	ASM	ASW
Disert (LA 15021)	18	Mimbres	1676	AD1300-1450	Salado	Powell and Langenwalter, 1977; Nelson and LeBlanc, 1986	unknown	MMA
Doolittle Cave (LA 15032)	19	Mimbres	1646	2000BC- AD1130	Archaic-Classic Mimbres	Cosgrove, 1947	unknown	PMAE
Duncan Site (AZ CC:8:4 [ASM])	20	Gila	1158	AD200-550	Early Pithouse	Lightfoot, 1984	unknown	ASU
DZ Site (LA 70185)	21	Gila	2164	AD1130-1300	Tularosa	Oakes, 1999	NMOAS, MSB	LA/MIAC
Eaton (LA 34800)	22	Gila	1402	2000BC- AD200	Archaic	Hemphill, 1983	unknown	unknown

Site	Map No.	Watershed	Elevation (m)	Dates	Period	References	Reference Collection	Specimen Repository
Fence Corner (LA 70196)	23	Gila	2012	AD550-1000	Late Pithouse	Oakes, 1999	NMOAS, MSB	LA/MIAC
Florida Mountain (LA 18839)	24	Mimbres	1402	AD550-1000	Late Pithouse	Schriever, 2002	unknown	CNMA/MIA C
Forest Home (LA 78089)	25	Gila	1890	2000BC-AD550	E Ag-Early Pithouse	Duncan, 2000	MSB	LA/MIAC
Fornholt (LA 164471)	26	Gila	1585	AD1130-1300	Tularosa	Schollmeyer, 2017	ASM	ASW
Galaz (LA 635)	27	Mimbres	1737	AD550-1000	Late Pithouse	Powell and Langenwalter, 1977	unknown	MMA
Gamalstad (LA 164472)	28	Gila	1585	AD500-1130	Late Pithouse/ Classic Mimbres	Huntley et al., 2019	ASM	ASW
Gila Cliff Dwellings (LA 13658)	29	Gila	1829	AD1130-1300	Tularosa	McKusick, 1986	unknown	WACC
Gila River Farm (LA 39315)	30	Gila	1402	AD1300-1450	Salado	Virden-Lange, 2017	unknown	ASW
Haca Negra (LA 89846)	31	Gila	2195	2000BC-AD1300	Archaic-Tularosa	Oakes, 1999	NMOAS, MSB	LA/MIAC
Haji Baba (LA 19059)	32	Mimbres	1817	AD1000-1130	Classic Mimbres	Urban 1981	unknown	MMA
Harris (LA 1867)	33	Mimbres	1829	AD550-1000	Late Pithouse	Powell, 2015	PVCC	MMA
Haury's Site (LA 39969)	34	Gila	1829	AD1000-1130	Reserve	Oakes, 1999	NMOAS, MSB	LA/MIAC
Heron Ruin (LA 34788)	35	Gila	1372	AD1000-1130	Classic Mimbres	Burns, 1972	unknown	unknown
Higgins Flat (LA 8682)	36	Gila	1829	AD1130-1300	Tularosa	Martin et al., 1956	CNHM	FMNH
HO-Bar (LA 68160)	37	Gila	1524	AD200-550	Early Pithouse	Michael Pool pers. comm.	unknown	TARL
Hough (LA 3279)	38	Gila	2195	AD1130-1300	Tularosa	Oakes, 1999	NMOAS, MSB	LA/MIAC
Humming Wire (LA 45508)	39	Gila	2134	AD550-1000	Late Pithouse	Oakes, 1999	NMOAS, MSB	LA/MIAC
Jackson Fraction (LA 111413)	40	Mimbres	2073	AD1000-1130	Classic Mimbres	Kearns et al., 1999	unknown	LA/MIAC
Janss (LA 12077)	41	Mimbres	1829	AD1300-1450	Salado	Powell and Langenwalter, 1977; Nelson and LeBlanc, 1986	unknown	MMA
Kipp Ruin (LA 153465)	42	Mimbres	1280	AD 200-1000 AD550-1000 AD1300-1450	Pithouse Late Pithouse/ Classic Mimbres Salado	DeBry, 2008	NMSU	NMSU
LA 4989	43	Gila	2134	AD1130-1300	Tularosa	Kayser, 1972	unknown	LA/MIAC
LA 14981	44	Mimbres	1524	AD550-1130	Late Pithouse/ Classic Mimbres	Urban 1981	unknown	MMA
LA 14992	45	Mimbres	1670	AD550-1130	Late Pithouse/ Classic Mimbres	Urban 1981	unknown	MMA
LA 15012	46	Mimbres	1646	Unknown	Unknown	Urban 1981	unknown	MMA
LA 18849	47	Mimbres	1295	Unknown	Unknown	Urban 1981	unknown	MMA

Site	Map No.	Watershed	Elevation (m)	Dates	Period	References	Reference Collection	Specimen Repository
LA 19030	48	Mimbres	1865	AD1000-1130	Classic Mimbres	Urban 1981	unknown	MMA
LA 19150	49	Mimbres	1685	AD550-1130	Late Pithouse/ Classic Mimbres	Urban 1981	unknown	MMA
LA 54812	50	Mimbres	1280	2000BC-AD200	Archaic	Jones et al., 2012	unknown	LA/MIAC
LA 83772	51	Mimbres	1829	AD200-550	Early Pithouse	Wiseman, 1998	unknown	LA/MIAC
LA 129571	52	Gila	1311	AD1450+	Protohistoric Apachean	Jones et al., 2012	unknown	LA/MIAC
LA 144921	53	Mimbres	1372	2000BC-AD550	E Ag-Early Pithouse	Jones et al., 2012	unknown	LA/MIAC
LA 159879	54	Mimbres	1311	2000BC-AD200	E Ag pre-200	Akins, 2015	NMOAS	LA/MIAC
La Gila Encantada (LA 113467)	55	Mimbres	1981	AD550-1000	Late Pithouse	Schmidt, 2010	ASM	MMA
Lake Roberts Vista (LA 71877)	56	Gila	1829	AD550-1130	Late Pithouse/ Classic Mimbres	Stokes and Roth 1999; Roth 2007; Myers 2009	unknown	GNF
Las Hermanas (LA 19072)	57	Mimbres	1372	AD550-1000	Late Pithouse/ Classic Mimbres	Fitting, 1971b	unknown	unknown
Lazy Meadows (LA 39975)	58	Gila	1951	AD550-1000	Late Pithouse	Oakes, 1999	NMOAS, MSB	LA/MIAC
Lone Mountain Cave	59	Mimbres	unkn	AD550-1130	Late Pithouse/ Classic Mimbres	Cosgrove, 1947	unknown	PMAE
Luna Village (LA 45507)	60	Gila	2134	AD550-1000	Late Pithouse	Oakes, 1999	NMOAS, MSB	LA/MIAC
Mattocks (LA 676)	61	Mimbres	1798	AD550-1000 AD1000-1130	Late Pithouse Classic Mimbres	Powell, 1977	unknown	MMA
MC 110 (LA 88765)	62	Gila	1615	AD550-1000	Late Pithouse	Fitting, 1971a	unknown	unknown
McAnally (LA 12110)	63	Mimbres	1829	AD200-550	Early Pithouse	Diehl and LeBlanc, 2001	unknown	MMA
McSherry (LA 15050)	64	Mimbres	1609	AD1000-1130	Classic Mimbres	Urban 1981	unknown	MMA
Mesa Top (AZ CC:4:12)	65	Gila	1189	AD200-550	Early Pithouse	Berman, 1978	UTEP	NMSU
Mitchell (12076)	66	Mimbres	1890	AD1000-1130	Classic Mimbres	Powell, 1977	unknown	MMA
Mogollon Village (LA 11568)	67	Gila	1554	AD200-550 AD200-1000 AD550-1000	Early Pithouse Pithouse Late Pithouse	Cannon, 1999	BMUW, MSB	ASM
Montezuma (LA 18890)	68	Mimbres	1890	AD550-1000 AD1000-1130	Late Pithouse Classic Mimbres	Powell and Langenwalter, 1977; Powell, 1977	unknown	MMA
Montoya (LA 15075)	69	Mimbres	1585	AD1130-1300	Black Mountain	Powell and Langenwalter, 1977	unknown	MMA
NAN Ranch (LA 2465)	70	Mimbres	1585	AD550-1000 AD1000-1130	Late Pithouse Classic Mimbres	Sanchez, 1992, Shaffer, 1991	TAM	WNMU
Old Peralta (LA 43766)	71	Gila	1890	2000BC-AD200	Archaic	Oakes, 1999	NMOAS, MSB	LA/MIAC
Old Town (LA 1113)	72	Mimbres	1372	AD550-1000 AD1000-1130	Late Pithouse Classic Mimbres	Sanchez, 1992; Myers, 2009	TAM	LA/MIAC

Site	Map No.	Watershed	Elevation (m)	Dates	Period	References	Reference Collection	Specimen Repository
Ormand Village (LA 5793)	73	Gila	1341	AD1300-1450	Salado	Akins, 1998	MSB	LA/MIAC
Peterson Canyon (LA 121159)	74	Gila	1737	AD550-1000	Late Pithouse	Railey, 2000	MSB	LA/MIAC
Pinnacle Cave (LA 5691)	75	Mimbres	1585	AD1000-1300	Classic Mimbres-Early Postclassic	Lambert and Ambler, 1961	SNMNM	LA/MIAC
Promontory (LA 9713)	76	Gila	1829	AD200-550	Early Pithouse	Martin et al., 1949	CNHM	FMNH
Pruitt Ranch (LA 1117/LA 15030)	77	Mimbres	1530	AD550-1130	Late Pithouse/ Classic Mimbres	Urban 1981	unknown	MMA
Raven's Roost (LA 70188)	78	Gila	2073	2000BC- AD200	Archaic	Oakes, 1999	NMOAS, MSB	LA/MIAC
Red Ear (LA 89847)	79	Gila	2195	2000BC- AD1300	Mixed	Oakes, 1999	NMOAS, MSB	LA/MIAC
Redrock 1 #1 (LA 29397)	80	Gila	1250	2000BC- AD550	E Ag-Early Pithouse	Silverbird, 1980	NMSU	unknown
Redrock Village (LA 5416)	81	Gila	1219	AD1000-1130	Classic Mimbres	Mills and Mills, 1977	unknown	unknown
Riverside (LA 34789)	52	Gila	1372	AD1000-1130 AD1300-1450	Classic Mimbres Salado	Baker, 1971	unknown	unknown
Saige-McFarland (LA 5421)	83	Gila	1402	AD1000-1130	Classic Mimbres	Gillespie, 1987; Myers, 2009	ASM	LA/MIAC
Sawmill (LA 9657)	84	Gila	1951	AD1000-1130	Reserve	Bluhm, 1957	CNHM	FMNH
Spurgeon Draw (LA 39968)	85	Gila	1890	AD1130-1300	Tularosa	Oakes, 1999	NMOAS, MSB	LA/MIAC
Stailey (LA 18939)	86	Mimbres	1768	AD1300-1450	Salado	Nelson and LeBlanc, 1986; Myers, 2009	unknown	MMA
Steamboat Cave (LA 73054)	87	Gila	1829	AD550-1130	Late Pithouse/ Classic Mimbres	Cosgrove, 1947	unknown	PMAE
SU (LA 64931)	88	Gila	1951	AD200-550	Early Pithouse	Martin, 1943	CNHM	FMNH
SU Tank (LA 39972)	89	Gila	1890	AD200-550 AD1000-1130	Early Pithouse Reserve	Oakes, 1999	NMOAS, MSB	LA/MIAC
Swarts Ruin (LA 1691)	90	Mimbres	1646	AD550-1130	Late Pithouse/ Classic Mimbres	Cosgrove and Cosgrove, 1932 [2004]	unknown	PMAE
Thompson (LA 14976)	91	Mimbres	1597	AD200-550	Early Pithouse	Urban 1981	unknown	MMA
Tularosa Cave (LA 4427)	92	Gila	2042	2000BC- AD1450 2000BC- AD200 AD200-550 AD550-1000 AD550-1300	Mixed Archaic Early Pithouse Late Pithouse Late Pithouse-Tularosa Reserve/Tularosa	Hough, 1914; Heller, 1976	unknown	FMNH

Site	Map No.	Watershed	Elevation (m)	Dates	Period	References	Reference Collection	Specimen Repository
Tunis School (LA 54814)	93	Mimbres	1341	AD1000-1300 AD200-550	Early Pithouse	Jones et al., 2012	unknown	LA/MIAC
Turkey Foot Ridge (LA 9709)	94	Gila	1859	AD550-1000	Late Pithouse	Martin and Rinaldo, 1950	CNHM	FMNH
Turkey Toes (LA 70201)	95	Gila	1890	AD550-1000	Late Pithouse	Oakes, 1999	NMOAS, MSB	LA/MIAC
U-Bar Cave (LA 5689)	96	Mimbres	1524	Pleistocene- AD1450	Mixed	Lambert and Ambler, 1961	SNMNM	LA/MIAC
Villareal II (LA 34794)	97	Gila	1402	AD1300-1450	Salado	Lekson, 2002	unknown	unknown
Walsh (LA 15044)	98	Mimbres	1493	AD1130-1300	Black Mountain	Powell and Langenwalter, 1977	unknown	MMA
Wheaton-Smith (LA 18903)	99	Mimbres	1731	AD550-1000 AD1000-1130	Late Pithouse Classic Mimbres	Urban 1981	unknown	MMA
Wind Mountain (LA 127260)	100	Gila	1737	AD550-1000 AD1000-1130	Late Pithouse Classic Mimbres	McKusick, 1996; Olsen and Olsen, 1996	ASM	AFM
Winn Canyon (LA 34813)	101	Gila	1402	AD200-550	Early Pithouse	Fitting, 1973	unknown	unknown
Wood Canyon (LA 99631)	102	Gila	1768	2000BC- AD200	E Ag pre-200	Duncan, 2000	MSB	LA/MIAC
Woodrow Ruin (LA 2454)	103	Gila	1402	AD550-1000 AD550-1130 AD1000-1130	Late Pithouse Late Pithouse/ Classic Mimbres Classic Mimbres	Schollmeyer, 2015	ASM	LA/MIAC
WS Ranch (LA 3099)	104	Gila	1524	AD200-1300	Early Pithouse-Tularosa	Shaffer and Neely, 1992	TAM	TARL
X-S-X (LA 50702)	105	Gila	1707	AD1000-1130	Classic Mimbres	Forrester, 1992	unknown	SNMNH

APPENDIX 2: TAXA

Faunal assemblages from archaeological sites in the Gila and Mimbres watersheds of southwestern New Mexico, arranged by taxon.

PHYLUM MOLLUSCA

CLASS BIVALVIA

ORDER ARCIDA

FAMILY GLYCYMERIDIDAE

Glycymeris sp.—undifferentiated bittersweet clams

2000BC-AD550: *GILA*—Tularosa Cave (2).

2000BC-AD1450: *MIMBRES*—Doolittle Cave (P).

AD200-550: *GILA*—SU (P).

AD550-1000: *GILA*—MC 110 (1); *MIMBRES*—Beauregard (2), Galaz (51), Harris (13), Three Circle (2), Wheaton-Smith (81).

AD550-1130: *GILA*—Gamalstad (6); *MIMBRES*—Bradsby (6), LA 14981 (1), LA 14992 (1), Cameron Creek Village (1), Galaz (230), Lone Mountain Cave (P), Montezuma (11), Old Town (1), Pruitt Ranch (P), Swarts Ruin (1, P).

AD900-1000: *GILA*—Luna Village (4).

AD1000-1130: *GILA*—Saige-McFarland (P), X-S-X (P), Sawmill (2); *MIMBRES*—Columbus Pueblo (1), LA 19030 (2), Mattocks (34), McSherry (3), Mitchell (5), NAN Ranch (361).

AD1130-1300: *GILA*—Fornholt (14), Higgins Flat (1), Spurgeon Draw (1), Hough (2); *MIMBRES*—Walsh (1).

AD1300-1450: *GILA*—3-Up (2), Villareal II (1); *MIMBRES*—Disert (2), Stailey (1).

UNKNOWN: *MIMBRES*—LA 15012 (1).

Comments: Marine clam shell imported from the Gulf of California.

Glycymeris gigantea—giant bittersweet

AD550-1000: *MIMBRES*—Harris (94), La Gila Encantada (4).

AD1000-1130: *GILA*—Wind Mountain (95).

AD1130-1300: *GILA*—Gila Cliff Dwellings (21).

AD1300-1450: *GILA*—Dinwiddie (2).

Comments: Marine clam shell imported from the Gulf of California.

Glycymeris maculata—speckled bittersweet

AD1130-1300: *GILA*—Higgins Flat (17).

Comments: Anderson et al. (1986:180) considered the identification of these Higgins Flat marine clams by Martin et al. (1956) probably incorrect as the adults of *maculata*, unlike *G. gigantea*, are not large enough to be made into bracelets.

ORDER VENERIDA

FAMILY CARDIIDAE

Laevicardium elatum—giant Pacific cockle

AD1000-1130: *MIMBRES*—Mattocks (1), Mitchell (1).

AD1130-1300: *GILA*—Fornholt (6).

AD1300-1450: *GILA*—Gila River Farm (1).

Comments: Marine shell imported from the Pacific coast.

ORDER PECTINIDA

FAMILY PECTINIDAE

Pectinidae—undifferentiated marine scallop

AD550-1130: *MIMBRES*—Galaz (10).

AD1000-1130: *MIMBRES*—NAN Ranch (137).

AD1130-1300: *GILA*—Fornholt (3).

Argopecten sp.—undifferentiated calico scallop

AD550-1130: *MIMBRES*—Cameron Creek Village (P).

AD1000-1130: *MIMBRES*—Walsh (2).

Comments: An imported marine shell.

Argopecten ventricosus—Pacific calico scallop

AD550-1000: *MIMBRES*—Harris (1).

AD550-1130: *GILA*—Gamalstad (1). *MIMBRES*—Cameron Creek Village (P).

AD1130-1300: *GILA*—Gila Cliff Dwellings (1), Higgins Flat (3); *MIMBRES*—Old Town (1).

Comments: An imported marine shell. Synonyms: *A. circularis*, *Pecten circularis*, *Aequipecten circularis*.

Euvola vogdesi—concave scallop

AD550-1130: *MIMBRES*—Cameron Creek Village (P).

AD1000-1130: *GILA*—Wind Mountain (1).

Comments: An imported marine shell. Synonyms: *Pecten excavatus*, *P. vogdesi*.

FAMILY SPONDYLIDAE

Spondylus sp.—undifferentiated thorny oyster

AD550-1130: *MIMBRES*—Galaz (52), Swarts Ruin (P).

AD1000-1130: *MIMBRES*—NAN Ranch (74).

AD1300-1450: *MIMBRES*—Disert (1).

Comments: An imported marine shell.

Spondylus crassisquama—Pacific thorny oyster

AD550-1000: *MIMBRES*—Florida Mountain (97), Wheaton-Smith (1).

AD1000-1130: *MIMBRES*—Mitchell (1).

AD1130-1300: *GILA*—Gila Cliff Dwellings (1).

UNKNOWN: *MIMBRES*—LA 18849 (3).

Comments: An imported marine shell. Synonym: *S. princeps*.

Spondylus limbatus—donkey thorny oyster

AD550-1000: *MIMBRES*—Florida Mountain (235), Galaz (92).

AD550-1130: *MIMBRES*—Montezuma (1).

AD1000-1130: *MIMBRES*—Mattocks (1).

AD1300-1450: *GILA*—Dinwiddie (1).

Comments: An imported marine shell. Synonym: *S. calcifer*.

ORDER PTERIOIDA

FAMILY PTERIIDAE

Ptera sterna—Pacific wing-oyster

AD1000-1130: *GILA*—Wind Mountain (1).

Comments: An imported marine shell.

ORDER UNIONOIDA

FAMILY UNIONIDAE

Anodonta californiensis—California floater

AD550-1000: *MIMBRES*—Harris (13), La Gila Encantada (7).

AD550-1130: *GILA*—Gamalstad (1), Sage-McFarland (110), Lake Roberts Vista (13);

MIMBRES—Cameron Creek Village (1), Galaz (1), Bradsby (1), Swarts Ruin (1).

AD1000-1130: *MIMBRES*—Jackson Fraction (cf. 3), Mattocks (6), Old Town (4).

AD1130-1300: *GILA*—Fornholt (3), Gila Cliff Dwellings (1).

AD1300-1450: *GILA*—Dinwiddie (44), Gila River Farm (20), Ormand Village (51).

Comments: This western species of freshwater mussel was once broadly distributed throughout the lower Colorado River Basin, including the Gila River and its major drainages in Arizona and southwestern New Mexico (Myers, 2009). It has also been documented (pre-historically and historically) in the Rio Yaqui Basin of Sonora and Chihuahua, and east of the Continental Divide in the Guzmán Basin complex of northwestern Chihuahua. The archaeological record clearly shows that the native range of *Anodonata* once extended into the Mimbres River drainage in New Mexico (Myers 2009; this study). This mussel is now considered extirpated (and listed as Critically Imperiled by Arizona; Vulnerable as *A. nuttalliana* by IUCN) throughout this former range except for a small relic population believed still extant in the upper Black River drainage in the White Mountains of Arizona, and rapidly diminishing numbers in the Rio Yaqui and Guzmán Basin of northern Mexico (Myers, 2009; Blevins et al., 2017).

According to Terry Myers (pers. comm.), *Anodonta californiensis* in the Gila Basin inhabited 1st to 5th order streams with low gradients, soft non-organic silts, stable water regimes, and an absence of scouring floods. They also required an abundance of fish to serve as host during their immature life stage and to serve as this mollusk's primary means of dispersal. Most of the archaeological specimens recovered showed no signs of being worked and were believed locally collected, primarily as a food source (Wallace, 1998). Manufacture into ornaments is thought limited as this species is relatively thin shelled and workable only for one to two days after harvesting, but manufacture in process is documented at Dinwiddie (Viriden-Lange, 2015).

Williams et al. (2017) regarded *A. dejecta* a synonym of *Anodonta californiensis*, and the winged floater, *A. nuttalliana* of California northward a separate species. *Anodonta californiensis* is considered the sole species inhabiting the Colorado basin (including the Gila River), Rio Yaqui basin, and Guzmán basin in pre-Columbian and recent times.

ORDER VENERIDA

FAMILY CHAMIDAE

Chama echinata—a jewelbox clam

AD1000-1130: *GILA*—Wind Mountain (5).

AD1130-1300: *GILA*—Gila Cliff Dwellings (1).

Comments: An imported marine clam shell.

CLASS GASTROPODA

ORDER CAENOGASTROPODA [NEOTAENIOGLOSSA]

FAMILY POTAMIDIDAE

Cerithideopsis sp.—undifferentiated hornsnail

AD550-1130: *MIMBRES*—Cameron Creek Village (P).

Comments: An imported sea snail shell. Synonym: *Cerithidea* sp.

Cerithideopsis californica—California hornsnail

AD1300-1450: *GILA*—Gila River Farm (1).

Comments: An imported sea snail shell. Synonym: *Cerithidea californica*.

FAMILY TURRITELLIDAE

Turritella sp.—undifferentiated turretnail

AD550-1130: *MIMBRES*—Galaz (4).

AD1000-1130: *MIMBRES*—NAN Ranch (1).

AD1300-1450: *GILA*—Gila River Farm (1).

Comments: An imported sea snail shell.

ORDER CYCLONERITIDA

FAMILY NERITIDAE

Theodoxus luteofasciatus—a nerites marine snail

AD550-1000: *MIMBRES*—Harris (1).

Comments: An imported marine shell.

ORDER HETEROSTROPHA

FAMILY ARCHITECTONICIDAE

AD1000-1130: *MIMBRES*—NAN Ranch (1).

Comments: Imported staircase or sundial sea snail shell.

ORDER HYGROPHILA [BASOMMATOPHORA]

FAMILY LYMNAEIDAE

Lymnaea/Stagnicola sp.—undifferentiated pondsnail

2000BC-AD550: *MIMBRES*—LA 54812 (1).

AD1130-1300: *GILA*—Fornholt (1).

Comments: the taxonomy of these freshwater snails has an unsettled history. For example, the wrinkled marshsnail of Arizona, New Mexico and elsewhere has been variously considered as

Stagnicola caperata (Bequaert and Miller, 1998; Turgeon et al., 1998), *Lymnaea caperata* (Taylor, 1987; Harrold and Guralnick, 2010), and *Hinkleyia caperata* (MolluscaBase, 2018).

FAMILY PLANORBIDAE

Helisoma sp.—undifferentiated ramshorn snail

AD1300-1450: *GILA*—Dinwiddie (1).

Comments: a freshwater snail.

Helisoma tenue—Mexican ramshorn snail

AD550-1000: *MIMBRES*—Harris (1).

AD1000-1130: *MIMBRES*—Haji Baba (1).

Comments: Taxa of uncertain status according to MolluscaBase (2019). Considered a synonym of *Planorbella tenuis* by Turgeon et al. (1998).

ORDER LEPETELLIDA

FAMILY HALIOTIDAE

Haliotis sp.—undifferentiated abalone

AD550-1130: *MIMBRES*—Montezuma (1).

AD1000-1130: *GILA*—Wind Mountain (1); *MIMBRES*—Columbus Pueblo (1), NAN Ranch (81).

AD1130-1300: *GILA*—Gila Cliff Dwellings (1).

AD1300-1450: *GILA*—Dinwiddie (2); *MIMBRES*—Disert (2).

Comments: An imported sea snail shell.

Haliotis fulgens—green abalone

AD1000-1130: *MIMBRES*—Mitchell (1).

ORDER LITTORINIMORPHA

FAMILY STROMBIDAE

Lobatus galeatus—Eastern Pacific giant conch

AD1000-1130: *GILA*—Wind Mountain (1).

Comments: An imported sea snail shell. Synonym: *Strombus galeatus*.

Strombus sp.—undifferentiated true conch

AD1000-1130: *MIMBRES*—NAN Ranch (2).

Comments: An imported sea snail shell. Genus designation uncertain.

FAMILY VERMETIDAE

Vermetidae—undifferentiated worm snail

AD550-1130: *MIMBRES*—Swarts Ruin (P).

AD1130-1300: *GILA*—Gila Cliff Dwellings (3).

Comments: An imported sea snail shell.

ORDER NEOGASTROPODA

FAMILY COLUMBELLIDAE

Columbella sp.—undifferentiated dove snail

AD1000-1130: *MIMBRES*—NAN Ranch (1).

Comments: An imported sea snail shell.

Columbella major—fat dove shell

AD550-1000: *MIMBRES*—Wheaton-Smith (23).

Columbella strombiformis—stromboid dove shell

AD1130-1300: *GILA*—Gila Cliff Dwellings (1).

FAMILY CONIDAE

Conasprella perplexa—puzzled cone snail

AD200-550: *MIMBRES*—Thomson (1).

AD550-1000: *MIMBRES*—Galaz (1).

AD1000-1130: *MIMBRES*—Mattocks (1).

AD1130-1300: *GILA*—Gila Cliff Dwellings (7).

AD1300-1450: *MIMBRES*—Disert (1), Janss (3), Stailey (1).

Comments: An imported sea snail shell. Synonym: *Conus perplexus*.

- Conus sp.*—undifferentiated cone snail
AD550-1000: *MIMBRES*—Harris (1).
AD550-1130: *MIMBRES*—Cameron Creek Village (P), Galaz (7), Swarts Ruin (P).
AD1000-1130: *MIMBRES*—NAN Ranch (5).
AD1130-1300: *GILA* — Higgins Flat (12).
AD1300-1450: *GILA* — Dinwiddie (7), Gila River Farm (4), Ormand Village (3);
MIMBRES— Stailey (1).
Comments: An imported sea snail shell.
- Conus gladiator*—gladiator cone snail
AD1130-1300: *GILA*—Gila Cliff Dwellings (2), Higgins Flat (13).
Comments: An imported sea snail shell.
- Conus princeps*—prince cone snail
AD1130-1300: *GILA*—Gila Cliff Dwellings (1).
Comments: An imported sea snail shell.
- Conus regularis*—regular cone snail
AD1130-1300: *GILA*—Gila Cliff Dwellings (1).
AD1300-1450: *GILA* — Dinwiddie (1).
Comments: An imported sea snail shell. Synonym: *Gradiconus regularis*.
- FAMILY NASSARIIDAE
- Nassariidae—undifferentiated Nassa mud snails
AD1000-1130: *MIMBRES*—Columbus Pueblo (12).
Comments: An imported sea snail shell.
- Nassarius sp.*—undifferentiated Nassa mud snail
AD550-1000: *MIMBRES*—Harris (1).
AD1000-1130: *MIMBRES*—NAN Ranch (182).
AD1130-1300: *GILA*—Gila Cliff Dwellings (1).
Comments: An imported sea snail shell.
- Nassarius iodes*—a Nassa mud snail
AD1300-1450: *GILA* — Dinwiddie (1), Gila River Farm (2).
Comments: An imported sea snail shell.
- Nassarius moestus*—a Nassa mud snail
AD550-1130: *GILA*—X-S-X (P); *MIMBRES*—Cameron Creek Village (P).
Comments: An imported sea snail shell.
- Tritia sp.*[?]*—*a Nassa mud snail
AD550-1130: *MIMBRES*—Galaz (12), Swarts Ruin (P).
Comments: An imported sea snail shell. The authors of these site reports are more likely referring to a member of the genus *Nassarius* as *Tritia* sea snails are restricted to eastern Atlantic waters.
- FAMILY OLIVIDAE
- Agaronia testacea*—Panama false olive
AD550-1000: *MIMBRES*—Harris (123).
AD1000-1130: *GILA*—Wind Mountain (2).
Comments: An imported marine snail shell.
- Oliva sp.*—undifferentiated olive sea snail
AD550-1130: *GILA*—X-S-X (P); *MIMBRES*—Bradsby (1).
- Oliva incrassata*—Giant olive
AD1000-1130: *GILA*—Wind Mountain (1).
AD1130-1300: *GILA*—Gila Cliff Dwellings (1).
Comments: An imported sea snail shell.
- Oliva spicata*—veined olive
AD550-1130: *MIMBRES*—Cameron Creek Village (P).
AD1000-1130: *GILA*—Wind Mountain (2).
Comments: An imported sea snail shell.
- Olivella sp.*—undifferentiated dwarf olive
2000BC-AD1450: *MIMBRES*—Doolittle Cave (P).
AD200-550: *GILA*—Mesa Top (1), SU (P); *MIMBRES*—Thompson (1), Tunis School (1).

AD550-1000: *MIMBRES*—Harris (9), Las Hermanas (1).
AD550-1130: *GILA*—Steamboat Cave (P); *MIMBRES*—Galaz (400), Swarts Ruin (P).
AD1000-1130: *GILA*—Saige-McFarland (P); *MIMBRES*—Columbus Pueblo (1), NAN Ranch (34).
AD1130-1300: *GILA*—Gila Cliff Dwellings (1), Higgins Flat (13).
AD1300-1450: *GILA*—Dinwiddie (6), Ormand Village (2).
Comments: An imported sea snail shell.

Olivella dama—dama dwarf olive

AD200-550: *MIMBRES*—Thompson (2).
AD550-1000: *MIMBRES*—Florida Mountain (68), Harris (32), Wheaton-Smith (17).
AD550-1130: *MIMBRES*—Galaz (2), LA 19150 (2), Montezuma (7).
AD1000-1130: *GILA*—Wind Mountain (4); *MIMBRES*—LA 19030 (6), Mattocks (3).
AD1130-1300: *GILA*—Fornholt (2), Gila Cliff Dwellings (1).
AD1200-1300: *MIMBRES*—Dike/Levee (2).
AD1300-1450: *GILA*—3-Up (1); Dinwiddie (6); *MIMBRES*—Disert (2), Janss (6).
UNKNOWN: *MIMBRES*—LA 18849 (±300).

Comments: An imported sea snail shell. Synonym: *O. purpurata*.

FAMILY RAPHTOMIDAE

Pleurotomella sp.—undifferentiated Raphitomid sea snail

AD550-1130: *MIMBRES*—Galaz (1).
Comments: An imported marine snail shell.

ORDER STYLOMMATOPHORA

FAMILY OREOHELICIDAE

Oreohelix sp.—undifferentiated mountain snail

AD1000-1130: *MIMBRES*—Jackson Fraction (3).
Comments: A diverse and widespread genus of large, western montane land snails.

Oreohelix houghi—Diablo mountain snail

AD550-1000: *MIMBRES*—Harris (1).
AD550-1130: *MIMBRES*—Montezuma (1).
AD1000-1130: *MIMBRES*—Haji Baba (1).
AD1130-1300: *MIMBRES*—Walsh (2).

FAMILY PRISTILOMATIDAE

Hawaiiia minuscula—minute gem snail

AD1130-1300: *GILA*—Fornholt (4).
AD1300-1450: *GILA*—Gila River Farm (2).
Comments: A common and widespread monotypic species of Pristiomatid land snails.

FAMILY SUCCINEIDAE

Succinea sp.—undifferentiated ambersnail

AD1300-1450: *GILA*—Dinwiddie (3), Gila River Farm (1).
Comments: This genus of land snails includes *S. grosvenori*, a xeric-tolerant species common at lower elevations in southern New Mexico and Trans-Pecos Texas, and *S. luteola*, a species of marshes and other damp habitats common in Texas westward to the Rio Grande Valley of southern New Mexico (Taylor, 1987).

FAMILY XANTHONYCHIDAE [HELMINTHOGLYTIDAE]

Sonorella sp.—undifferentiated tallussnail

AD550-1000: *MIMBRES*—La Gila Encantada (3).
AD1000-1130: *GILA*—Wind Mountain (4).
Comments: Almost all of the 66 recognized species of *Sonorella* land snails (Turgeon et al., 1998) are restricted to montane talus habitats south of the Gila River in Arizona (Bequaert and Miller, 1998). Only four are known eastward into southern New Mexico: *S. hachitana* (Big Hatchet Mts., Florida Mts., Peloncillo Mts.), *S. animasensis* (Animas Mts.), *S. orientis* (Organ Mts.), and *S. todseni* (Dona Ana Co.) (NMDGF, 2006).

PHYLUM [SUBPHYLUM] VERTEBRATA

CLASS OSTEICHTHYES

Osteichthyes—undifferentiated bony fish

2000BC-AD550: *GILA*—Redrock 1 #1 (1); *MIMBRES*—LA 144921 (2).

AD200-1300: *GILA*—WS Ranch (67).

AD550-1000: *GILA*—Woodrow Ruin (19); *MIMBRES*—Galaz (5), Harris (2), Montezuma (1), NAN Ranch (2).

AD550-1130: *GILA*—Woodrow Ruin (21).

AD1000-1130: *GILA*—DeFausal/Kartchner/G-12 (1), Haury's Site (2), Saige McFarland (15), Woodrow Ruin (2), X-S-X (10); *MIMBRES*—Mattocks (1), Montezuma (1), NAN Ranch (4).

AD1130-1300: *GILA*—Fornholt (169); *MIMBRES*—Black Mountain (1), Montoya (16).

AD1300-1450: *GILA*—3-Up (20), Ormand Village (2), Villareal II (2); *MIMBRES*—Disert (3), Janss (16), Stailey (3).

ORDER CYPRINIFORMES—undifferentiated ray-finned fish

AD200-1300: *GILA*—WS Ranch (1).

AD550-1000: *GILA*—Woodrow Ruin (1).

AD550-1130: *GILA*—Woodrow Ruin (3).

AD1000-1130: *GILA*—Woodrow Ruin (2); *MIMBRES*—NAN Ranch (5).

AD1130-1300: *GILA*—Fornholt (1)

FAMILY CYPRINIDAE

Cyprinidae—undifferentiated minnows

AD1130-1300: *GILA*—Fornholt (5).

Gila nigrescens—Chihuahua chub

AD550-1000: *MIMBRES*—Galaz (1).

Comments: Members of this western genus of chubs have a complex and challenging taxonomic and systematic history, and particularly so among the numerous putative species of the Chihuahuan and Sonoran Desert regions of the U.S. and Mexico (Schönhuth et al., 2014). Remnant populations of Chihuahua chubs (*Gila nigrescens*) are still extant in the upper Mimbres drainage as well as directly south in the geologically and hydrologically dynamic bolsons of northwestern Chihuahua (Axtell, 1977; Minckley et al., 1986; Castiglia and Fawcett, 2006). Roundtail chub, *G. robusta*, which now includes the recently synonymized taxa *intermedia* and *nigra* (Page et al., 2017), occur west of the continental divide in the upper reaches of the Gila River; they no longer occur in the San Francisco River, where they were last documented in 1948 (Propst, 1999). Prehistoric records are limited to a vertebra tentatively identified as *G. robusta* from Late Pleistocene deposits at Howell's Ridge Cave near the bootheel of New Mexico (Van Devender and Worthington, 1977), and as *G. nigrescens* (3) recovered from the archaeological site of Paquime (Casas Grandes) in northwestern Chihuahua (Di Peso et al., 1974).

FAMILY CATOSTOMIDAE—undifferentiated suckers

AD550-1000: *MIMBRES*—Galaz (1).

AD1130-1300: *GILA*—Hough (5), Spurgeon Draw (1).

AD1300-1450: *GILA*—3-Up (4).

Comments: Desert suckers (*Catostomus clarki*) and Sonora suckers (*C. insignis*) are uncommon but widespread throughout the Gila River Basin of New Mexico (Paroz and Propst, 2007). The razorback sucker (*Xyrauchen texanus*), now extirpated, probably also occurred in the upper Gila drainage within historic times (Sublette et al., 1990). The Rio Grande sucker (*C. plebeius*) is currently found in the upper Rio Grande as well as the Guzmán Basin, which includes the Mimbres River in New Mexico. Interestingly, apparently isolated populations of Rio Grande suckers also occur west of the continental divide in the upper San Francisco River drainage and in the Sapillo Creek drainage, a tributary of the Gila River just over the divide from the Mimbres. Long considered non-native introductions (Sublette et al., 1990), recent genetic studies by McPhee et al. (2008) and Turner et al. (2019) strongly support the hypothesis that the presence of Rio Grande suckers in the Gila basin are of natural occurrence brought about by headwater stream captures during the Pleistocene. Why no other extant

populations of this fish have been discovered elsewhere in either the Gila or San Francisco watersheds remains a conundrum.

FAMILY ICTALURIDAE—undifferentiated catfish

AD1000-1130: *GILA*—Haury's Site (2).

AD1300-1450: *GILA*—3-Up (1).

Comments: No details are provided by the authors reporting catfish remains from these two sites in the San Francisco basin. There are no native catfish species known from within the study area. All of the 4-5 species (*Ictalurus melas*, *I. natalis*, *I. punctatus*, possibly *I. lupus*, and *Pylodictis olivaris*) now present in the Gila and Mimbres basins are introduced non-natives. The Yaqui catfish (*Ictalurus pricei*) of northern Mexico is the closest native catfish, occurring in the Yaqui Basin of Sonora, Chihuahua, and (formerly) southeastern Arizona, and east of the Continental Divide in the Guzmán Basin (Casas Grande River) of northwestern Chihuahua but now considered extirpated (Varela-Romero et al., 2011).

CLASS AMPHIBIA

Amphibia—undifferentiated amphibians

2000BC-AD550: *MIMBRES*—LA 144921 (1).

AD200-1300: *GILA*—WS Ranch (1).

AD550-1000: *MIMBRES*—Galaz (1).

AD1130-1300: *GILA*—Gila Cliff Dwellings (1), Hough (2); *MIMBRES*—Montoya (1).

ORDER ANURA

Anura—undifferentiated frogs and toads

AD200-1300: *GILA*—WS Ranch (158).

AD550-1000: *GILA*—Luna Village (1).

AD1000-1130: *MIMBRES*—NAN Ranch (10).

AD1130-1300: *GILA*—Fornholt (3), Hough (4), Spurgeon Draw (19); *MIMBRES*—Black Mountain (1).

AD1130-1450: *MIMBRES*—76 Draw (2).

AD1300-1450: *MIMBRES*—Black Mountain (8).

FAMILY SCAPHIOPODIDAE—Nearctic spadefoots

Scaphiopus sp. — North American spadefoots

AD200-1130: *GILA*—Wind Mountain (1).

Scaphiopus couchii—Couch's spadefoot

AD1000-1130: *GILA*—Saige-McFarland (3).

FAMILY BUFONIDAE

Bufonidae—undifferentiated toads

AD200-1300: *GILA*—WS Ranch (4).

AD550-1000: *GILA*—Luna Village (1), Wind Mountain (6).

AD550-1130: *GILA*—Woodrow Ruin (2).

AD1000-1130: *GILA*—Saige McFarland (1); *MIMBRES*—NAN Ranch (2).

AD1130-1300: *GILA*—Fornholt (4), Spurgeon Draw (2); *MIMBRES*—Montoya (1), Walsh (1).

Anaxyrus woodhousii—Woodhouse's toad

AD1000-1130: *GILA*—Saige-McFarland (1).

FAMILY RANIDAE

Lithobates sp.—true frogs

AD1130-1300: *MIMBRES*—Montoya (2).

CLASS REPTILIA

Reptilia—undifferentiated reptiles

2000BC-AD550: *GILA*—Wood Canyon (1); *MIMBRES*—LA 144921 (10).

AD200-1000: *GILA*—Beargrass (2).

AD200-1300: *GILA*—WS Ranch (1).

- AD550-1000:** *MIMBRES*—Galaz (2).
AD550-1130: *GILA*—Woodrow Ruin (1).
AD1000-1130: *GILA*—Heron Ruin (2); *MIMBRES*—Mattocks (2), NAN Ranch (1).
AD1130-1300: *GILA*—Fornholt (1), Gila Cliff Dwellings (1); *MIMBRES*—Black Mountain (1).
AD1300-1450: *GILA*—Villareal II (2).

ORDER TESTUDINES

Testudines—undifferentiated turtles

- 2000BC-AD550:** *GILA*—Forest Home (1), Wood Canyon (14); *MIMBRES*—LA 144921 (48), LA 159879 (1).
2000BC-AD1450: *MIMBRES*—Bobcat Cave (1).
AD200-550: *MIMBRES*—LA 129562 (1), Tunis School (1).
AD200-1000: *GILA*—Beargrass (1); *MIMBRES*—Kipp Ruin (10).
AD200-1300: *GILA*—WS Ranch (6).
AD550-1000: *MIMBRES*—Galaz (26), Kipp Ruin (4), NAN Ranch (4).
AD550-1130: *GILA*—Woodrow Ruin (1).
AD1000-1130: *GILA*—Saige McFarland (2); *MIMBRES*—Columbus Pueblo (2), Mattocks (6), NAN Ranch (6).
AD1130-1300: *GILA*—Fornholt (3), Gila Cliff Dwellings (2); *MIMBRES*—Black Mountain (139), Montoya (2), Walsh (11).
AD1130-1450: *MIMBRES*—76 Draw (1841).
AD1300-1450: *GILA*—Ormand Village (1); *MIMBRES*—Black Mountain (13), Kipp Ruin (1).

FAMILY EMYDIDAE

Emydidae—undifferentiated pond turtles

- AD200-550:** *MIMBRES*—LA 129562 (4).
AD 200-1000: *GILA*—Beargrass (1).
AD1000-1130: *GILA*—X-S-X (1); *MIMBRES*—NAN Ranch (1).
AD1130-1300: *GILA*—Hough (4).

Chrysemys picta—painted turtle

- 2000BC-AD550:** *MIMBRES*—LA 144921 (3).
AD550-1000: *GILA*—MC 110 (1).

Comments: Painted turtles are currently found from the Rio Grande, eastward (Degenhardt et al., 1996; Painter et al., 2017). These precolumbian records represent either possible transports from the Rio Grande, or natural occurrence in the past in or near the Mimbres drainage given this species was until only recently quite common directly south, along with the soft shell turtle *Apalone spinifera* in the bolsons of northwestern Chihuahua (Brand, 1937; Axtell, 1977; Lemos-Espinal et al., 2017). Old occurrence records of painted turtles west of the continental divide in Arizona are delineated by the Turtle Taxonomy Working Group (2017) and discussed by Jennings (1987).

Terrapene ornata—ornate or desert box turtle

- 2000BC-AD550:** *GILA*—Wood Canyon (27); *MIMBRES*—LA 144921 (1).
2000BC-AD1450: *MIMBRES*—Bobcat Cave (1512).
AD200-550: *MIMBRES*—LA 129562 (1).
AD1130-1300: *MIMBRES*—Black Mountain (6).
AD1130-1450: *MIMBRES*—76 Draw (27).
AD1300-1450: *MIMBRES*—Black Mountain (1).

FAMILY KINOSTERNIDAE

Kinosternon sp.—American mud turtles

- 2000BC-AD1450:** *GILA*—Wood Canyon (10), *MIMBRES*—Bobcat Cave (52).
AD 200-1130: *GILA*—Wind Mountain (1).
AD550-1000: *GILA*—Mogollon Village (6), Wind Mountain (4).
AD1130-1300: *GILA*—Fornholt (1).

Kinosternon flavescens—yellow mud turtle

- AD1000-1130:** *GILA*—Saige-McFarland (1).

Comments: William Gillespie (1987) reported this complete shell (carapace+plastron) of a mud turtle, and separated it from the more likely *K. sonoriense* based on the presence of raised posterior marginal scutes on the carapace. Given the lack of other non-shell elements, he suggested this specimen may have been an artifact, perhaps a rattle.

FAMILY TESTUDINIDAE

Gopherus cf. morafkai—Morafka’s desert tortoise

AD550-1130: *GILA*—Wind Mountain (2)

Comments: Reports on several sites list “Testudinidae” (“tortoise” or “land tortoise”) remains which we have relegated to Testudines, above, as these records appear to have been using nonstandard terminology and are most likely referring to the terrestrial box turtle *Terrapene ornate* in the Emydidae family. The only unambiguous claim of desert tortoise (genus *Gopherus*) in our study area is two “*G. agassizii*” plastron fragments recovered from the Wind Mountain site in upper Mangas Creek, Gila drainage (Olsen and Olsen, 1996). It is of no small interest that the range of desert tortoises may once have extended eastward to include the southern borderlands of the study area. Late Pleistocene remains of desert tortoises, identified and reconfirmed as *G. agassizii*, now *G. morafkai* for populations east of the Colorado River (see Murphy et al., 2011; Edwards et al., 2016; and the Turtle Taxonomy Working Group, 2017) for current taxonomic understandings) have been recovered from several cave sites in southcentral and southeastern New Mexico (Brattstrom, 1964; Van Devender et al., 1976), and farther west (as *Gopherus* sp.) from U-Bar Cave in eastern Hidalgo County (Harris, 1989). That desert tortoises may have persisted, perhaps still persist, along the borderlands into historical times is suggested by Lee’s (2008) dozen or so records and reports from recent decades of desert tortoises in the San Simon, San Bernardino, and Playas Valleys of Cochise County, Arizona, and Hidalgo and Luna County, New Mexico. Additionally, Donald D. Brand (1937, pg. 52), a University of California geographer conducting field work in northwestern Chihuahua between 1929 and 1935 noted the following: “Among the Chelonia the Mexican mud turtle, Texas terrapin, painted box turtle, Agassiz tortoise, and Emory’s soft-shelled turtle are most frequently encountered. The sloughs and dry-season pools of the Rio Santa Maria and Rio Casas Grandes abound in turtles...The desert tortoise is a strange wanderer sometimes encountered miles from the nearest water on the desert plains between the Rio Santa Maria and the Rio Grande.”

ORDER SQUAMATA, SUBORDER SAURIA

Sauria—undifferentiated lizards

2000BC-AD550: *GILA*—Wood Canyon (1); *MIMBRES*—LA 144921 (1).

AD200-550: *MIMBRES*—LA 129562 (2).

AD200-1000: *GILA*—Beargrass (8).

AD200-1300: *GILA*—WS Ranch (29).

AD1000-1130: *MIMBRES*—Jackson Fraction (2).

AD1130-1300: *GILA*—Hough (1); *MIMBRES*—Montoya (1).

FAMILY CROTAPHYTIDAE

Crotaphytus collaris—collared lizard

AD1000-1130: *GILA*—Saige-McFarland (1).

FAMILY PHRYNOSOMATIDAE

Phrynosoma sp.—horned lizards

2000BC-AD1450: *MIMBRES*—Bobcat Cave (1).

AD200-1300: *GILA*—WS Ranch (2).

AD1130-1300: *MIMBRES*—Walsh (2).

Phrynosoma cornutum—Texas horned lizard

2000BC-AD550: *MIMBRES*—LA 144921 (15).

Comments: This lizard is widely distributed in southern and eastern New Mexico (Painter et al., 2017). Phylogenetic studies by Guerra (1998) and Rosenthal and Forstner (2014) provide insights into the biogeographic history of this species in the northern Chihuahuan Desert.

FAMILY TEIIDAE

Aspidoscelis sp.—whiptails

AD200-1000: *GILA*—Beargrass (5).

ORDER SQUAMATA, SUBORDER SERPENTES

Serpentes—undifferentiated snakes

2000BC-AD550: *MIMBRES*—LA 144921 (104).

2000BC-AD1450: *MIMBRES*—Bobcat Cave (25).

AD 200-1000: *GILA*—Beargrass (3).

AD200-1300: *GILA*—WS Ranch (23).

AD550-1000: *MIMBRES*—NAN Ranch (7), Old Town (2).

AD1130-1300: *GILA*—Fornholt (23); *MIMBRES*—Black Mountain (6), Walsh (2).

AD1130-1450: *MIMBRES*—76 Draw (5).

AD1300-1450: *MIMBRES*—Disert (15).

FAMILY COLUBRIDAE

Colubridae—undifferentiated common snakes

2000BC-AD1450: *MIMBRES*—Bobcat Cave (1).

AD200-1300: *GILA*—WS Ranch (28).

AD550-1000: *MIMBRES*—Galaz (2), NAN Ranch (11).

AD1000-1130: *GILA*—Saige McFarland (1).

AD1130-1300: *GILA*—Hough (1); *MIMBRES*—Montoya (1).

Lampropeltis sp.—kingsnakes

AD1130-1300: *GILA*—Spurgeon Draw (14)

Lampropeltis cf. *spendida*

2000BC-AD550: *MIMBRES*—LA 144921 (1).

FAMILY VIPERIDAE

Viperidae—undifferentiated vipers

AD200-1000: *MIMBRES*—Kipp Ruin (2).

AD200-1300: *GILA*—WS Ranch (1).

AD550-1000: *MIMBRES*—NAN Ranch (1), Old Town (15).

AD1000-1130: *MIMBRES*—NAN Ranch (1).

Crotalus sp.—rattlesnakes

2000BC-AD550: *MIMBRES*—LA 144921 (1).

AD1130-1300: *MIMBRES*—Walsh (7).

Crotalus atrox—western diamond-backed rattlesnake

2000BC-AD550: *MIMBRES*—LA 144921 (52).

CLASS AVES

ORDER ANSERIFORMES

FAMILY ANATIDAE

Anatidae—undifferentiated ducks, geese

2000BC-AD550: *GILA*—Tularosa Cave (2).

AD200-550: *GILA*—Tularosa Cave (1).

AD200-1300: *GILA*—WS Ranch (1).

AD550-1000: *GILA*—Mogollon Village (1), Tularosa Cave (1); *MIMBRES*—Galaz (1).

AD550-1300: *GILA*—Tularosa Cave (2).

AD1130-1300: *GILA*—Hough (1).

Aix sponsa—wood duck

AD1130-1300: *GILA*—Hough (1).

Anas sp.—dabbling ducks

AD550-1000: *GILA*—Wind Mountain (1); *MIMBRES*—NAN Ranch (1).

AD1000-1130: *GILA*—DeFausal/Kartchner/G-12 (2); *MIMBRES*—NAN Ranch (2).

AD1300-1450: *MIMBRES*—Disert (1).

Anas acuta—northern pintail

AD1000-1130: *GILA*—Saige McFarland (P).

Anas crecca—green-winged teal

AD1000-1130: *GILA*—Saige McFarland (P); *MIMBRES*—Mattocks (1).

Anas platyrhynchos—mallard

AD1000-1130: *GILA*—Saige McFarland (2).

- AD1130-1300:** *GILA*—Hough (3), Spurgeon Draw (1).
Branta canadensis—Canada goose
AD550-1000: *GILA*—Turkey Foot Ridge (1).
AD1000-1130: *GILA*—Saige McFarland (P).
AD1300-1450: *GILA*—Ormand Village (1).
Bucephala albeola—bufflehead
AD1000-1130: *GILA*—Saige McFarland (P).
Mergus merganser—common merganser
AD1130-1300: *GILA*—Gila Cliff Dwellings (1), Hough (2).
Mergus serrator—red-breasted merganser
AD1130-1300: *GILA*—Gila Cliff Dwellings (1).
Oxyura jamaicensis—ruddy duck
AD1000-1130: *GILA*—Saige McFarland (1).
Spatula cf. cyanoptera—cinnamon teal
AD1000-1130: *GILA*—Saige McFarland (P).
AD1130-1300: *GILA*—Gila Cliff Dwellings (1).
Comments: Listed as cinnamon teal from both sites, but unless feathers were used for identification (which they were not in these cases), it would be extremely difficult to separate this teal from the bones of its congener, blue-winged teal, *S. discors*.

ORDER GALLIFORMES

Galliformes—undifferentiated gallinaceous birds

- AD550-1000:** *MIMBRES*—NAN Ranch (5).
AD1000-1130: *MIMBRES*—NAN Ranch (20).

FAMILY ODONTOPHORIDAE

Odontophoridae—undifferentiated quail

- 2000BC-AD1450:** *MIMBRES*—Bobcat Cave (1).
AD550-1000: *GILA*—Turkey Foot Ridge (1).
AD1000-1130: *MIMBRES*—NAN Ranch (1).
AD1130-1300: *MIMBRES*—Walsh (2).

Comments: The specimen from NAN Ranch was a partially articulated burial (counted here as one specimen).

Callipepla sp.—crested quails

- 2000BC-AD1450:** *MIMBRES*—Bobcat Cave (1).
AD550-1000: *MIMBRES*—Galaz (1).
AD550-1130: *GILA*—Woodrow Ruin (2).
AD1000-1130: *GILA*—Saige McFarland (1).
AD1130-1300: *GILA*—Fornholt (2); *MIMBRES*—Montoya (5), Walsh (1).
AD1300-1450: *MIMBRES*—Disert (6), Stailey (1).

Callipepla gambelii—Gambel's quail

- AD 200-1130:** *GILA*—Wind Mountain (1).
AD550-1000: *GILA*—Humming Wire (4), Luna Village (9), Wind Mountain (3); *MIMBRES*—Las Gila Encantada (1).
AD1000-1130: *GILA*—Saige McFarland (2+); *MIMBRES*—Mattocks (4).
AD1130-1300: *GILA*—Hough (2), Spurgeon Draw (1).
AD1300-1450: *GILA*—Ormand Village (2); *MIMBRES*—Janss (1).

Callipepla squamata—scaled quail

- 2000BC-AD1450:** *MIMBRES*—Bobcat Cave (1).
AD 200-1000: *MIMBRES*—Kipp Ruin (1).
AD550-1000: *GILA*—Luna Village (1).
AD1000-1130: *GILA*—Saige McFarland (2); *MIMBRES*—Mattocks (1), Montezuma (1).
AD1130-1300: *GILA*—Hough (2); *MIMBRES*—Montoya (3).
AD1300-1450: *GILA*—3-Up (1).

Colinus virginianus—northern bobwhite

- 2000BC-AD550:** *MIMBRES*—LA 144921 (4).
AD550-1000: *GILA*—Luna Village (13).

Comments: This species is currently found well outside the study area in far eastern New Mexico and eastern Sonora. An isolated population of the “masked” form occurred in southern Arizona up until the late 1800s-early 1900s. According to Ligon (1961), it’s “quite probable that [masked bobwhite] formerly occurred in the Animas Valley of Hidalgo County”; however, Sayre (2002) pointed out that the presence of masked bobwhites in New Mexico’s bootheel was, in fact, more likely the result of Ligon and Arizona Game officials “planting” them there, unsuccessfully as it quickly turned out, from birds captured in Sonora, Mexico sometime between 1937 and 1950. Harris (2018) included the uncertain identification of this species from Mid-Wisconsin deposits in U-Bar Cave, Hidalgo County, based in part on Ligon’s probability statement. The archaeological material from LA 144921 in the Mimbres drainage included 1 coracoid, 1 femur, and 2 humeri (Jones et al., 2012). Oakes (1999) provided no information on the Luna Village specimens. Neither author mentions the unusual occurrence of this out-of-range species or how they were identified.

Cyrtonyx montezumae—montezuma quail

2000BC-AD550: *GILA*—Redrock 1 #1 (1).

AD1000-1130: *GILA*—Saige McFarland (1).

AD1130-1300: *GILA*—Gila Cliff Dwellings (2).

Oreortyx sp.—mountain quail

AD1130-1300: *MIMBRES*—Montoya (1).

AD1300-1450: *MIMBRES*—Disert (3).

Comments: Mountain quail are found today in the foothills and mountains of far western US, making its occurrence in a Mimbres archaeological site highly suspect. A right carpometacarpus comprised the only Montoya remains (Powell and Langenwaller, 1977). Interestingly, Harris (2018) reported semi-fossils identified to this species from several Wisconsin-aged cave sites scattered across southern New Mexico (and one in southern Chihuahua, Mexico).

FAMILY PHASIANIDAE

Phasianidae—undifferentiated turkeys, grouse

AD200-1300: *GILA*—WS Ranch (4).

AD550-1000: *GILA*—Luna Village (1); *MIMBRES*—NAN Ranch (12), Old Town (4).

AD1000-1130: *MIMBRES*—NAN Ranch (28), Old Town (1).

AD1130-1300: *GILA*—Hough (5).

AD1300-1450: *GILA*—Ormand Village (1).

Meleagris gallopavo—turkey

2000BC-AD550: *GILA*—Tularosa Cave (3).

2000BC-AD1450: *GILA*—Tularosa Cave (P).

AD200-550: *GILA*—Ho-Bar (1), Promontory (3), SU (20), Tularosa Cave (3).

AD200-1000: *MIMBRES*—Kipp Ruin (5).

AD 200-1130: *GILA*—Wind Mountain (9).

AD200-1300: *GILA*—WS Ranch (3).

AD550-1000: *GILA*—Fence Corner (30), Luna Village (4), MC 110 (2), Tularosa Cave (6), Turkey Foot Ridge (6), Wind Mountain (20), Woodrow Ruin (1); *MIMBRES*—Kipp Ruin (5), La Gila Encantada (11), Montezuma (23), NAN Ranch (3).

AD550-1130: *MIMBRES*—Swarts Ruin (P).

AD550-1300: *GILA*—Tularosa Cave (6).

AD1000-1130: *GILA*—Haury’s Site (3), Saige McFarland (P), Sawmill (4), SU Tank (18);

MIMBRES—Cooney Ranch #1 (1), Mattocks (17), Mitchell (13), Montezuma (19), NAN Ranch (6).

AD1130-1300: *GILA*—DZ Site (1), Fornsolt (3), Gila Cliff Dwellings (24), Hough (263), LA 4989 (P), Spurgeon Draw (5).

AD1300-1450: *GILA*—3-Up (3), Ormand Village (1); *MIMBRES*—Disert (3).

Comments: One specimen from Fornsolt was a partial burial of the left leg and right wing of an adult male bird (14 elements counted here as one specimen). Five reported from NAN Ranch were burials of partially articulated individuals (each counted as one specimen here).

Meleagris gallopavo—wild turkey

AD1130-1300: *GILA*—Gila Cliff Dwellings (7).

Meleagris gallopavo—domesticated turkey

AD1130-1300: *GILA*—Gila Cliff Dwellings (2).

Tympanuchus cupido—greater prairie-chicken

AD1000-1130: *MIMBRES*—Mattocks (1)

Comments: Well out of modern range and most likely misidentified (see below). Powell (1997) provided no details or discussion of this unusual record from the Mimbres drainage.

Tympanuchus cf. pallidicinctus—lesser prairie-chicken

AD550-1000: *MIMBRES*—Kipp Ruin (1).

Comments: Basing his identification on a single but complete carpometacarpus, DeBry (2008) acknowledged this record from near the Florida Mountains southeast of Deming is well beyond current range in far-eastern New Mexico but that this species may have occurred farther west in the past. Harris (2018) provides no fossil evidence of prairie-chicken occurrence west of Otero County in south-central New Mexico either during or around the end of the last glacial, but does give Late Pleistocene records of another extralimital Tetraonid, the sage-grouse (*Centrocercus* spp), from cave deposits farther west in Hidalgo and Grant counties (Braun and Williams, 2015).

ORDER PODICIPEDIFORMES

FAMILY PODICIPEDIDAE

Podicipedidae—undifferentiated grebes

AD1300-1450: *MIMBRES*—Stailey (1).

Podilymbus podiceps—pied-billed grebe

AD550-1000: *GILA*—Luna Village (1).

ORDER COLUMBIFORMES

FAMILY COLUMBIDAE

Columbidae—undifferentiated doves, pigeons

AD200-550: *MIMBRES*—LA 129562 (1).

AD550-1000: *MIMBRES*—Harris (1).

Patagioenas fasciata—band-tailed pigeon

AD200-1130: *GILA*—Wind Mountain (2).

AD550-1000: *GILA*—Wind Mountain (1).

AD1130-1300: *GILA*—Gila Cliff Dwellings (1).

Zenaida asiatica—white-winged dove

2000BC-AD550: *GILA*—Redrock 1#1 (1).

Zenaida macroura—mourning dove

AD550-1000: *GILA*—Luna Village (18), Tularosa Cave (2), Wind Mountain (1).

AD1000-1130: *GILA*—Saige McFarland (4+).

AD1130-1300: *GILA*—Gila Cliff Dwellings (2).

ORDER CUCULIFORMES

FAMILY CUCULIDAE

Geococcyx californianus—greater roadrunner

2000BC-AD550: *GILA*—Wood Canyon (2).

2000BC-AD1450: *MIMBRES*—Bobcat Cave (1).

AD550-1000: *GILA*—Wind Mountain (1).

AD1000-1130: *GILA*—Saige McFarland (1+), Wind Mountain (1).

AD1130-1300: *GILA*—Fornholt (1); *MIMBRES*—Black Mountain (1).

AD1300-1450: *GILA*—Ormand Village (1); *MIMBRES*—Black Mountain (1).

ORDER CAPRIMULGIFORMES

FAMILY CAPRIMULGIDAE

Chordeiles sp.—nighthawks

AD550-1000: *GILA*—Wind Mountain (1); *MIMBRES*—Old Town (1).

Comments: The specimen from Old Town consisted of a partially articulated wing (counted here as one specimen).

ORDER GRUIFORMES

FAMILY RALLIDAE

Fulica americana—American coot

AD1000-1130: *GILA*—Saige McFarland (P).

FAMILY GRUIDAE

Cf. *Antigone canadensis*—sandhill crane

AD550-1130: *MIMBRES*—Swarts Ruin (P).

Comments: Reported as “crane” by Cosgrove and Cosgrove (1932).

ORDER PELECANIFORMES

FAMILY PELECANIDAE

Pelecanus erythrorhynchos—American white pelican

AD550-1000: *GILA*—Wind Mountain (1).

AD1300-1450: *GILA*—Ormand Village (1).

FAMILY ARDEIDAE

Ardeidae—undifferentiated herons, egrets, bitterns

AD550-1130: *MIMBRES*—Swarts Ruin (P).

Ardea alba—great egret

AD1000-1130: *GILA*—Saige McFarland (1).

Ardea herodias—great blue heron

AD1000-1130: *GILA*—Saige McFarland (P).

ORDER CATHARTIFORMES

FAMILY CATHARTIDAE

Cathartidae—undifferentiated American vultures

AD200-1300: *GILA*—WS Ranch (1).

Cathartes aura—turkey vulture

AD200-1300: *GILA*—WS Ranch (7).

AD550-1000: *GILA*—Wind Mountain (1); *MIMBRES*—La Gila Encantada (1).

AD1130-1300: *GILA*—Gila Cliff Dwellings (1).

AD1300-1450: *GILA*—Ormand Village (1).

ORDER ACCIPITRIFORMES

FAMILY ACCIPITRIDAE

Accipitridae—undifferentiated hawks, eagles

2000BC-AD1450: *MIMBRES*—Bobcat Cave (2).

AD200-1130: *GILA*—Wind Mountain (1).

AD200-1300: *GILA*—WS Ranch (13).

AD550-1000: *GILA*—Wind Mountain (2); *MIMBRES*—NAN Ranch (4), Old Town (1).

AD1130-1300: *GILA*—Hough (2).

Comments: A specimen from NAN Ranch was a burial of a partially articulated individual (counted here as one specimen).

Accipiter sp.—bird hawks

AD550-1000: *GILA*—Mogollon Village (1).

Accipiter cooperii—Cooper’s hawk

AD200-1130: *GILA*—Wind Mountain (2).

AD1000-1130: *MIMBRES*—Mattocks (1).

AD1000-1300: *GILA*—Tularosa Cave (3).

Aquila chrysaetos—golden eagle

AD200-1130: *GILA*—Wind Mountain (3).

AD550-1000: *GILA*—Wind Mountain (2).

AD550-1130: *MIMBRES*—Swarts Ruin (P).

AD1000-1300: *GILA*—Tularosa Cave (4).

AD1300-1450: *GILA*—Ormand Village (1).

Comments: The specimen from Swarts was a burial of a partially articulated individual.

Buteo sp.—buteonine hawks

2000BC-AD1450: *MIMBRES*—Bobcat Cave (3).

AD200-1130: *GILA*—Wind Mountain (1).

AD200-1300: *GILA*—WS Ranch (1).

AD550-1000: *GILA*—Luna Village (1), Tularosa Cave (1), Woodrow Ruin (2), Wind Mountain (16); *MIMBRES*—Galaz (4), Montezuma (1).

AD550-1130: *MIMBRES*—Swarts Ruin (P).

AD1000-1130: *GILA*—Woodrow Ruin (1); *MIMBRES*—NAN Ranch (4), Mattocks (3), Mitchell (3), Montezuma (11).

AD1130-1300: *GILA*—Gila Cliff Dwellings (1); *MIMBRES*—Montoya (6), Walsh (1).

AD1300-1450: *GILA*—3-Up (1); *MIMBRES*—Disert (1).

Comments: The four specimens from AD1000-1130 at NAN Ranch and the specimen from AD550-1000 at Montezuma were each partially articulated burials (each counted here as one specimen).

Buteo jamaicensis—red-tailed hawk

2000BC-AD550: *GILA*—Wood Canyon (1).

2000BC-AD1450: *GILA*—Tularosa Cave (P).

AD200-1130: *GILA*—Wind Mountain (5).

AD550-1000: *GILA*—Woodrow Ruin (3); *MIMBRES*—Galaz (4).

AD1000-1130: *GILA*—Saige McFarland (P), Woodrow Ruin (1); *MIMBRES*—Mattocks (2).

AD1130-1300: *GILA*—Hough (8).

AD1300-1450: *GILA*—3-Up (1).

Comments: The specimen from Wood Canyon was a partially articulated burial (counted here as one specimen).

Buteo lagopus—rough-legged hawk

AD1130-1300: *GILA*—Hough (3).

Buteo regalis—ferruginous hawk

AD1000-1130: *GILA*—Saige McFarland (P); *MIMBRES*—Mattocks (5), Montezuma (9).

AD1130-1300: *GILA*—Hough (1); *MIMBRES*—Montoya (4).

Comments: One specimen from Montoya was a partial burial (15 elements) from one individual (counted here as one specimen).

Parabuteo unicinctus—Harris's hawk

AD550-1000: *GILA*—Luna Village (1)

Comments: With a modern range that extends only marginally into the semi-desert and grassland habitats of southern Arizona and New Mexico, the reported occurrence of this bird of prey in the Mogollon Highlands without details (Oakes, 1999) is highly suspect.

ORDER STRIGIFORMES

Strigiformes—undifferentiated owls

2000BC-AD550: *GILA*—Tularosa Cave (1).

2000BC-AD1450: *MIMBRES*—Bobcat Cave (1).

FAMILY STRIGIDAE

Strigidae—undifferentiated typical owls

2000BC-AD1450: *MIMBRES*—Bobcat Cave (1).

AD1300-1450: *MIMBRES*—Disert (1).

Athene cunicularia—burrowing owl

AD1000-1130: *GILA*—Saige McFarland (1).

AD1300-1450: *GILA*—Ormand Village (1).

Comments: The specimen from Saige McFarland was a partially articulated wing (counted as one specimen here).

Bubo virginianus—great horned owl

2000BC-AD1450: *MIMBRES*—Bobcat Cave (1).

AD550-1000: *GILA*—Wind Mountain (2).

AD550-1300: *GILA*—Tularosa Cave (1).

Megascops sp.—screech-owls

AD1130-1300: *MIMBRES*—Black Mountain (1).

Strix occidentalis—spotted owl

AD1130-1300: *GILA*—Gila Cliff Dwellings (1).

FAMILY TYTONIDAE—barn owls

Tyto alba—barn owl

AD550-1000: *GILA*—Wind Mountain (1); *MIMBRES*—Old Town (1).

Comments: The specimen from Old Town was an articulated wing (counted here as one specimen).

ORDER PICIFORMES

FAMILY PICIDAE

Picidae—undifferentiated woodpeckers

AD200-1300: *GILA*—WS Ranch (1).

AD550-1000: *MIMBRES*—NAN Ranch (2).

AD550-1300: *GILA*—Tularosa Cave (11).

AD1000-1130: *MIMBRES*—NAN Ranch (1).

AD1130-1300: *GILA*—Fornholt (1).

AD1300-1450: *GILA*—3-Up (1).

Colaptes auratus—northern flicker

2000BC-AD1450: *MIMBRES*—Bobcat Cave (2).

AD200-550: *GILA*—Tularosa Cave (1).

AD1000-1130: *GILA*—Saige McFarland (1); *MIMBRES*—NAN Ranch (1).

AD1130-1300: *GILA*—Gila Cliff Dwellings (1).

AD1300-1450: *GILA*—Ormand Village (1).

Melanerpes formicivorus—acorn woodpecker

2000BC-AD1450: *MIMBRES*—Bobcat Cave (1).

AD1130-1300: *GILA*—Gila Cliff Dwellings (1).

ORDER FALCONIFORMES

FAMILY FALCONIDAE

Falco sp.—falcons

AD200-1300: *GILA*—WS Ranch (12).

AD550-1000: *GILA*—Tularosa Cave (1); *MIMBRES*—NAN Ranch (6), Old Town (1).

AD550-1300: *GILA*—Tularosa Cave (1).

AD1000-1130: *MIMBRES*—NAN Ranch (7).

AD1130-1300: *GILA*—Fornholt (3).

Comments: Five of the specimens from NAN Ranch were partially articulated burials (each counted here as one specimen).

Falco mexicanus—prairie falcon

2000BC-AD550: *GILA*—Tularosa Cave (1).

AD550-1000: *GILA*—Luna Village (10).

AD1300-1450: *GILA*—Ormand Village (3).

Falco sparverius—American kestrel

AD 550-1000: *GILA*—Wind Mountain (1).

AD1000-1130: *MIMBRES*—Mattocks (3).

ORDER PSITTACIFORMES

FAMILY PSITTACIDAE

AD550-1130: *MIMBRES*—Cameron Creek Village (2).

AD1000-1130: *MIMBRES*—Galaz (5).

Comments: Captive semi-domestic or trade item endemic to southern Mexico, Central and South America.

Ara sp.—macaws

AD1000-1130: *MIMBRES*—Old Town (1).

Comments: Captive semi-domestic or trade item endemic to southern Mexico, Central and South America. There is some debate over how reliably scarlet and military macaws can be differentiated based on skeletal remains, as these identifications are often based on size and the two species overlap in size during juvenile stages; many of the archaeologically identified remains are likely those of juveniles (see Crown 2016). We assume here that the published identifications are accurate, but hope for future research on this issue.

Ara macao—scarlet macaw

AD 200-1130: *GILA*—Wind Mountain (1).

AD550-1130: *MIMBRES*—Cameron Creek Village (1), Galaz (3), Old Town (1).

AD1130-1300: *GILA*—Gila Cliff Dwellings (1), Freeman Ranch (1).

Comments: Captive semi-domestic or trade item endemic to southern Mexico, Central and South America. The location of the Freeman Ranch site is unknown (although it is likely close to the Dinwiddie site, LA 106003) and no report on the site exists.

Ara militaris—military macaw

AD550-1130: *MIMBRES*—Galaz (1).

AD1000-1130: *MIMBRES*—Mitchell (2).

Comments: Captive semi-domestic or trade item endemic to Mexico southward to northeastern South America.

Rynchopsitta pachyrhyncha—thick-billed parrot

AD550-1000: *MIMBRES*—Cameron Creek Village (1), Treasure Hill (1).

AD1130-1300: *GILA*—Gila Cliff Dwellings (1).

Comments: Endemic to the temperate forests of northern Mexico and up until relatively recently (1920s or so), a sporadic visitor to the mountains of New Mexico and Arizona. Not known to be bred in captivity or as a live trade item. Neither report specified how these were distinguished from the Amazon parrots (*Amazona* sp.), some species of which could have been transported from the same areas as macaws and by similar means; *Amazona* bones have been found at another Mogollon site, Grasshopper Pueblo, outside our study area to the west (Olsen 1990).

ORDER PASSERIFORMES

Passeriformes—undifferentiated perching birds

AD200-550: *MIMBRES*—LA 129562 (2).

AD200-1300: *GILA*—WS Ranch (34).

AD550-1000: *MIMBRES*—Harris (6), La Gila Encantada (2), NAN Ranch (12), Old Town (1).

AD550-1130: *GILA*—Woodrow Ruin (2).

AD550-1300: *GILA*—Tularosa Cave (2).

AD1000-1130: *GILA*—DeFausal/Kartchner/G-12 (1); *MIMBRES*—Cooney Ranch #1 (1), NAN Ranch (23).

AD1130-1300: *GILA*—Fornholt (2); *MIMBRES*—Black Mountain (1). **AD1300-1450:** *MIMBRES*—Disert (2).

FAMILY TYRANNIDAE

Tyrannidae—undifferentiated tyrant flycatchers

AD1130-1300: *GILA*—Fornholt (1).

FAMILY LANIIDAE

Lanius sp.—shrikes

AD1130-1300: *MIMBRES*—Black Mountain (1).

FAMILY CORVIDAE

Corvidae—undifferentiated jays, magpies, crows

AD200-1300: *GILA*—WS Ranch (1).

AD550-1000: *GILA*—Luna Village (1), Wind Mountain (1).

AD1000-1130: *MIMBRES*—NAN Ranch (2).

AD1130-1300: *GILA*—Fornholt (1); *MIMBRES*—Montoya (2).

AD1300-1450: *MIMBRES*—Stailey (1).

Comments: The specimen from Fornholt was a burial of a partially articulated immature jay (*Aphelocoma*, *Cyanocitta*, or *Gymnorhinus*) (counted here as one specimen). One specimen from NAN Ranch was also a burial (counted here as one specimen).

- Aphelocoma wollweberi*—Mexican jay
AD550-1000: *GILA*—Fence Corner (5), Luna Village (13).
AD1130-1300: *GILA*—Hough (5).
- Corvus brachyrhynchos*—American crow
AD200-550: *MIMBRES*—LA 129562.
AD550-1000: *GILA*—Luna Village (1).
AD1130-1300: *GILA*—Hough (1).
- Corvus corax*—common raven
2000BC-AD550: *GILA*—Tularosa Cave (1).
2000BC-AD1450: *MIMBRES*—Bobcat Cave (1).
AD 200-1130: *GILA*—Wind Mountain (3).
AD550-1000: *GILA*—Wind Mountain (3); *MIMBRES*—Beauregard (4), La Gila Encantada (3).
AD1000-1130: *GILA*—Saige McFarland (P).
AD1130-1300: *GILA*—Hough (2).
- Corvus cryptoleucus*—Chihuahuan raven
2000BC-AD1450: *MIMBRES*—Bobcat Cave (5).
AD 550-1000: *GILA*—Wind Mountain (1).
AD1130-1300: *GILA*—Gila Cliff Dwellings (1).
- Cyanocitta stelleri*—Steller’s jay
AD550-1000: *GILA*—Tularosa Cave (1), Wind Mountain (1).
AD1130-1300: *GILA*—Gila Cliff Dwellings (1).
- Nucifraga columbiana*—Clark’s nutcracker
AD1000-1130: *GILA*—Saige McFarland (P).
- Pica hudsonia*—black-billed magpie
AD1300-1450: *MIMBRES*—Black Mountain (1).
Comments: Identified by tibiotarsus only (Schollmeyer, 2016). Out of current range (Alaska to northern New Mexico and Arizona); however, Emslie (1981) suggested magpies once had a more southerly distribution in New Mexico (bones from Pottery Mound—Rio Puerco). There are Late Wisconsin and Mid-Wisconsin-Holocene records of this species from U-Bar Cave (eastern Hidalgo County) and Shelter Cove (southern Dona Ana County), respectively (Harris, 1993, 2018). There could be the small possibility this flashy, intelligent bird was, like parrots, an occasional trade item, perhaps kept alive as a pet or for their iridescent feathers.
- FAMILY ALAUDIDAE
Eremophila alpestris—horned lark
AD1000-1130: *GILA*—Saige McFarland (P).
- FAMILY HIRUNDINIDAE
Progne subis—purple martin
AD1130-1300: *GILA*—Hough (1).
- FAMILY TURDIDAE
Turdidae—undifferentiated thrushes
AD1130-1300: *GILA*—Spurgeon Draw (1).
Turdus migratorius—American robin
AD1000-1130: *GILA*—Saige McFarland (P).
- FAMILY FRINGILLIDAE
Fringillidae—undifferentiated finches
AD1130-1300: *MIMBRES*—Black Mountain (1).
- FAMILY PASSERELLIDAE
Passerellidae—undifferentiated sparrows
AD200-1300: *GILA*—WS Ranch (1).
AD550-1000: *MIMBRES*—NAN Ranch (2), Old Town (1).
AD1000-1130: *MIMBRES*—NAN Ranch (5).
- Zonotrichia* sp.—Zonotrichid sparrows
AD1000-1130: *GILA*—Saige McFarland (1).
- FAMILY ICTERIDAE
Icteridae—undifferentiated blackbirds, orioles

AD550-1000: *GILA*—Luna Village (6), Wind Mountain (1).
Agelaius phoeniceus—red-winged blackbird
AD1000-1130: *MIMBRES*—Mattocks (1),
Euphagus cyanocephalus—Brewer’s blackbird
AD1000-1130: *GILA*—Saige McFarland (P).
Molothrus sp.—cowbirds
AD550-1000: *MIMBRES*—NAN Ranch (1),
Quiscalus sp.—grackles
2000BC-AD1450: *GILA*—Tularosa Cave (P).
Sturnella sp.—meadowlarks
AD1000-1130: *GILA*—Saige McFarland (P).
AD1300-1450: *GILA*—Ormand Village (2).
Comments: One specimen from Ormand Village was a burial of a partially articulated individual (counted here as one specimen).

CLASS MAMMALIA
ORDER LAGOMORPHA
FAMILY LEPORIDAE

Lepus sp.—jackrabbits

Pleistocene-AD1450: *MIMBRES*—U-Bar Cave (1).
2000BC-AD550: *GILA*—Eaton (P), Tularosa Cave (33), Wood Canyon (90), Forest Home (19); *MIMBRES*—LA 144921 (671).
2000BC-AD1450: *MIMBRES*—Bobcat Cave (618), Doolittle Cave (P).
AD200-550: *GILA*—Duncan Site (21), Ho-Bar (1), Mogollon Village (7), Wind Mountain (4); *MIMBRES*—LA 129562 (41), Tularosa Cave (9), Tunis School (67).
AD200-1000: *GILA*—Beargrass (71), Mogollon Village (2).
AD200-1130: *GILA*—Wind Mountain (57).
AD200-1300: *GILA*—WS Ranch (62).
AD550-1000: *GILA*—Mogollon Village (5), Peterson Canyon (1), Tularosa Cave (26), Turkey Foot Ridge (8), Wind Mountain (1083), Woodrow Ruin (8); *MIMBRES*—Beauregard (5), Buffalo Cave (P), Florida Mountain (33), Galaz (388), Harris (72), La Gila Encantada (34), Las Hermanas (590), Mattocks (3), Montezuma (70), NAN Ranch (1224), Old Town (684).
AD550-1130: *GILA*—Woodrow Ruin (45).
AD550-1300: *GILA*—Tularosa Cave (10).
AD1000-1130: *GILA*—Blacks Bluff (1), Riverside (1), Saige-McFarland (148), Sawmill (4), Wind Mountain (65), Woodrow Ruin (9), X-S-X (1); *MIMBRES*—Badger Ruin (1), Columbus Pueblo (153), Cooney Ranch #1 (17), Jackson Fraction (7), Mattocks (577), Mitchell (27), Montezuma (27), NAN Ranch (2597), Old Town (29).
AD1000-1300: *MIMBRES*—Pinnacle Cave (P).
AD1130-1300: *GILA*—Fornholt (44); *MIMBRES*—Black Mountain (642), Montoya (150), Walsh (307).
AD1130-1450: *MIMBRES*—76 Draw (831).
AD1300-1450: *GILA*—Riverside (7); *MIMBRES*—Black Mountain (44), Disert (42), Janss (16), Stailey (6).
AD1450+: *GILA*—LA129571 (2).
Lepus californicus—black-tailed jackrabbit
2000BC-AD550: *GILA*—Redrock 1#1 (14), Old Peralta (6), Raven’s Roost (2); *MIMBRES*—LA 159879 (19).
AD200-550: *GILA*—Ho-Bar (7), Wind Mountain (3); *MIMBRES*—LA 83772 (7).
AD200-1000: *MIMBRES*—Kipp Ruin (929).
AD200-1130: *GILA*—Wind Mountain (68).
AD550-1000: *GILA*—Fence Corner (11), Luna Village (44), Wind Mountain (182); *MIMBRES*—Galaz (2), Kipp Ruin (886), La Gila Encantada (1), Montezuma (6).
AD550-1130: *MIMBRES*—Swarts Ruin (P).

AD1000-1130: *GILA*—DeFausal/Kartchner/G-12 (29), Haury's Site (7), Heron Ruin (2), SU Tank (2), Wind Mountain (3).

AD1130-1300: *GILA*—DZ Site (2), Gila Cliff Dwellings (37), Hough (145), Spurgeon (115); *MIMBRES*—Montoya (1).

AD1300-1450: *GILA*—3-Up (10), Ormand Village (51), Villareal II (3); *MIMBRES*—Janss (1), Kipp Ruin (26).

Comments: Two specimens from the Swarts site and one from the Montoya site were burials of partially articulated individuals (each counted here as one specimen).

Cf. Lepus callotis—white-sided jackrabbit

AD550-1130: *GILA*—Wind Mountain (9).

Comments: Olsen and Olsen (1996) provisionally assigned (as *L. gaillardia*) several skeletal remains from the Wind Mountain site to this species. While this primarily Mexican species (Brown et al. 2018) may have ranged beyond New Mexico's bootheel in times past, no discussion is provided on the methodology used to differentiate it from the osteologically similar and much more likely *L. californicus*.

Sylvilagus sp.—cottontail rabbits

Pleistocene-AD1450: *MIMBRES*—U-Bar Cave (1).

2000BC-AD550: *GILA*—Forest Home (13), Redrock 1 #1 (2), Tularosa Cave (187), Wood Canyon (51); *MIMBRES*—LA 462, LA 159879 (12).

2000BC-AD1450: *GILA*—Red Ear (1); *MIMBRES*—Doolittle Cave (P); *MIMBRES*—Bobcat Cave (459).

AD200-550: *GILA*—Duncan Site (17), Ho-Bar (3), Mesa Top (14), Mogollon Village (14), Tularosa Cave (141), Wind Mountain (4); *MIMBRES*—LA 129562 (24), Tunis School (17).

AD200-1000: *GILA*—Beargrass (28).

AD200-1130: *GILA*—Wind Mountain (121).

AD200-1300: *GILA*—WS Ranch (37).

AD550-1000: *GILA*—MC 110 (3), Mogollon Village (2), Tularosa Cave (92), Turkey Foot Ridge (5), Wind Mountain (957), Woodrow Ruin (17); *MIMBRES*—Beauregard (33), Buffalo Cave (P), Florida Mountain (8), Galaz (265), Harris (153), La Gila Encantada (57), Las Hermanas (110), Mattocks (6), Montezuma (84), NAN Ranch (444), Old Town (168).

AD550-1130: *GILA*—Woodrow Ruin (76).

AD550-1300: *GILA*—Tularosa Cave (20).

AD1000-1130: *GILA*—Blacks Bluff (5), DeFausal/Kartchner/G-12 (50), Redrock Village (P), Riverside (2), Saige-McFarland (121), Sawmill (1), Wind Mountain (43), Woodrow Ruin (5); *MIMBRES*—Columbus Pueblo (1), Cooney Ranch #1 (18), Jackson Fraction (30), Mattocks (455), Mitchell (26), Montezuma (40), NAN Ranch (702), Old Town (5).

AD1000-1300: *MIMBRES*—Pinnacle Cave (P).

AD1130-1300: *GILA*—Fornholt (129), Gila Cliff Dwellings (145); *MIMBRES*—Black Mountain (264), Montoya (115), Walsh (218).

AD1130-1450: *MIMBRES*—76 Draw (375).

AD1300-1450: *GILA*—3 Up (46), Riverside (1), Villareal II (12); *MIMBRES*—Black Mountain (5), Disert (88), Janss (37), Stailey (1).

AD1450+: *GILA*—LA 129571 (1).

Sylvilagus audubonii—desert cottontail

2000BC-AD550: *GILA*—Old Peralta (1), Raven's Roost (1).

2000BC-AD1450: *MIMBRES*—Bobcat Cave (24).

AD200-550: *GILA*—Mogollon Village (1); *MIMBRES*—LA 83772 (6).

AD200-1000: *MIMBRES*—Kipp Ruin (213).

AD550-1000: *GILA*—Fence Corner (4), Luna Village (91); *MIMBRES*—Beauregard (12), Kipp Ruin (153), Montezuma (3).

AD550-1130: *MIMBRES*—Swarts Ruin (P).

AD1130-1300: *GILA*—DZ Site (9), Gila Cliff Dwellings (1), Hough (317), Spurgeon (205); *MIMBRES*—Montoya (2), Walsh (14).

AD1300-1450: *GILA*—Ormand Village (113); *MIMBRES*—Kipp Ruin (18).

Sylvilagus floridanus—eastern cottontail
2000BC-AD1450: *MIMBRES*—Bobcat Cave (3).
AD200-550: *GILA*—Mogollon Village (1).
AD550-1000: *MIMBRES*—Montezuma (1).

ORDER CHIROPTERA

FAMILY VESPERTILIONIDAE

Vespertilionidae—undifferentiated vesper bats
AD550-1000: *MIMBRES*—NAN Ranch (1).
AD1300-1450: *MIMBRES*—Kipp Ruin (1).
Cf. *Antrozous pallidus*—pallid bat
2000BC-AD1450: *MIMBRES*—Bobcat Cave (1).
Cf. *Myotis* sp.—mouse-eared bats
2000BC-AD1450: *MIMBRES*—Bobcat Cave (1).

ORDER CARNIVORA

FAMILY CANIDAE

Canis sp.—wolves, dog, foxes

Pleistocene-AD1450: *MIMBRES*—U-Bar Cave (3).
2000BC-AD1450: *GILA*—Raven’s Roost (1), Tularosa Cave (2), Wood Canyon (6), Red Ear (3). *MIMBRES*—Bobcat Cave (1).
AD200-550: *GILA*—Duncan Site (16), Ho-Bar (3), SU (30); *MIMBRES*—LA 83772 (3), McAnally (1).
AD200-1000: *MIMBRES*—Kipp Ruin (35).
AD200-1300: *GILA*—WS Ranch (14).
AD550-1000: *GILA*—Luna Village (3), Tularosa Cave (4), Wind Mountain (24); *MIMBRES*—Galaz (4), Kipp Ruin (2), Las Hermanas (12), NAN Ranch (5).
AD550-1130: *GILA*—Woodrow Ruin (2).
AD1000-1130: *GILA*—Blacks Bluff (1), Haury’s Site (9), Sawmill (1), Wind Mountain (1); *MIMBRES*—Mattocks (20), Mitchell (2).
AD1130-1300: *GILA*—Fornholt (1), Gila Cliff Dwellings (2), Hough (21), Spurgeon Draw (4); *MIMBRES*—Walsh (5).
AD1300-1450: *GILA*—3 Up (2); *MIMBRES*—Disert (3), Janss (3), Stailey (1).
Comments: Two of the specimens from NAN Ranch were burials of partially articulated individuals (each counted here as one specimen).

Canis latrans—coyote

2000BC-AD550: *GILA*—Forest Home (13), HO-Bar (1); *MIMBRES*—LA 144921 (1).
2000BC-AD1450: *GILA*—Tularosa Cave (P); *MIMBRES*—Bobcat Cave (2), Doolittle Cave (P).
AD200-550: *GILA*—Winn Canyon (P).
AD550-1000: *MIMBRES*—Florida Mountains (1).
AD550-1130: *MIMBRES*—Swarts Ruin (P).
AD1130-1300: *GILA*—Gila Cliff Dwellings (3).
Comments: One specimen at HO-Bar and one from Swarts were burials of partially articulated individuals.

Canis lupus—wolf

AD1130-1300: *GILA*—Hough (2).
AD1300-1450: *GILA*—*MIMBRES*—Janss (1).

Canis (lupus) familiaris—domestic dog

AD550-650: *MIMBRES*—Kipp Ruin (1).
AD550-1000: *GILA*—Turkey Foot Ridge (4); *MIMBRES*—Galaz (1), Montezuma (1).
AD550-1130: *MIMBRES*—Swarts Ruin (P).
AD1300-1450: *GILA*—3 Up (2).

Comments: The dog specimen at Kipp Ruin (a dog burial) was identified based on characteristics of the mandible, cranium, and teeth (Semanko, 2020). None of the other reports

in which domestic dog was identified specify how these specimens were distinguished from other species of *Canis*; the specimen from Montezuma is a cranium.

Urocyon cinereoargenteus—common gray fox

Pleistocene-AD1450: *MIMBRES*—U-Bar Cave (1).

2000BC-AD550: *GILA*—Tularosa Cave (13), Wood Canyon (2).

2000BC-AD1450: *GILA*—Tularosa Cave (P).

AD200-550: *GILA*—Tularosa Cave (9).

AD200-1130: *GILA*—Wind Mountain (2).

AD550-1000: *GILA*—Luna Village (1), Tularosa Cave (7), Wind Mountain (5); *MIMBRES*—Galaz (6), Harris (1), Montezuma (1).

AD550-1300: *GILA*—Tularosa Cave (5).

AD1000-1130: *GILA*—Sawmill (1); *MIMBRES*—Mitchell (1), Montezuma (1), NAN Ranch (1).

AD1130-1300: *GILA*—Gila Cliff Dwellings (13), Hough (6), Spurgeon Draw (4).

AD1300-1450: *MIMBRES*—Disert (3).

Urocyon/Vulpes undifferentiated

2000BC-AD1450: *MIMBRES*—Doolittle Cave (P).

AD200-550: *GILA*—Ho-Bar (1).

AD550-1000: *GILA*—Wind Mountain (4); *MIMBRES*—Galaz (3).

AD1130-1300: *MIMBRES*—Walsh (1).

Vulpes sp.—true foxes

AD200-1300: *GILA*—WS Ranch (1).

AD1000-1130: *GILA*—Sawmill (1).

Comments: Three species of true foxes are currently found in New Mexico: *V. vulpes*, the red fox of northwestern NM, *V. macrotis*, the kit fox of southern and western NM, and *V. velox*, the swift fox of eastern NM (see Jones (2016) for reports of occurrence in Grant County). Because of similarity of skeletal elements (primarily relative size and shape), discerning species identity can be difficult, and particularly so between the closely related (perhaps conspecific) kit and swift foxes (Dragoo and Wayne, 2003). Lack of cranial elements can also make discernment of *Urocyon* from *Vulpes* difficult (Harris, 2018). Because of their morphological similarity and because current distribution does not necessarily reflect prehistoric distribution, we've chosen to use caution by including *velox* with *macrotis* in the following account.

Vulpes macrotis/velox—kit or swift fox

2000BC-AD1450: *MIMBRES*—Bobcat Cave (1).

AD550-1000: *MIMBRES*—Las Hermanas (1).

Vulpes vulpes—red fox

AD550-1130: *MIMBRES*—Swarts Ruin (P).

AD1000-1130: *GILA*—Haury's Site (1).

AD1275-1320: *GILA*—Hough (1).

Comments: According to Cosgrove and Cosgrove (1932 [2004], pg. 5) and without further details, the fox remains from Swarts Ruin were identified by Grover M. Allen, Curator of Mammals at the Museum of Comparative Zoology, Harvard. Oakes (1999) provided no details on the two specimens excavated from these upper San Francisco River sites close to the Arizona border or how they were identified. Red foxes are considered an uncommon native to the higher elevations of northern New Mexico (Findley et al., 1975). Farther south in Catron County, Bailey (1931) reported seeing red foxes in the Mogollon Mountains near the head of Willow Creek. More recently, John Hubbard (BISON-M, 2018) estimated 162 red fox taken by trappers over five winters between 1981 and 1991 from Catron County. Available NMGF furbearer report records of red fox taken by trappers in the state's western-most counties from 2015 to 2018 show 1 from Grant, none from Catron, 1 from Cibola, 31 from McKinley, and 275 from San Juan County (BISON-M, 2018). Mikesic and LaRue (2003) considered red foxes common in northeastern Arizona. Synonym: *V. macroura* (*macrourus*).

FAMILY FELIDAE

Lynx sp.—lynxes

2000BC-AD550: *GILA*—Tularosa Cave (13).

Lynx rufus—bobcat

- Pleistocene-AD1450:** *MIMBRES*—U-Bar Cave (4).
2000BC-AD550: *GILA*—Wood Canyon (3).
2000BC-AD1450: *GILA*—Tularosa Cave (P).
AD200-1130: *GILA*—Wind Mountain (1).
AD550-1000: *GILA*—Wind Mountain (4); *MIMBRES*—Kipp Ruin (1), NAN Ranch (17).
AD1000-1130: *GILA*—Heron Ruin (1); *MIMBRES*—Columbus Pueblo (1).
AD1130-1300: *GILA*—Hough (3).
AD1130-1450: *GILA*—Ormand Village (1); *MIMBRES*—76 Draw (4).

Lynx cf. rufus

- AD1130-1300:** *MIMBRES*—Montoya (1).
AD1130-1450: *MIMBRES*—Janss (2).

Puma concolor—mountain lion

- 2000BC-AD550:** *GILA*—Tularosa Cave (1).
AD200-1300: *GILA*—WS Ranch (5).
AD550-1000: *MIMBRES*—La Gila Encantada (2).
AD1000-1130: *MIMBRES*—Jackson Fraction (2), Mattocks (1).

Puma cf. concolor

- 2000BC-AD1450:** *MIMBRES*—Bobcat Cave (1).
AD550-1000: *MIMBRES*—Beauregard (1).
AD1000-1130: *GILA*—Saige McFarland (4); *MIMBRES*—Mattocks (1).
Comments: Harris (1973, pg. 228) reported that the fragment of a carnassial tooth found at Bobcat Cave was from a large cat, either *Puma* or *Panthera* (jaguar), but couldn't rule out a canid.

FAMILY MEPHITIDAE

Mephitis sp.—striped and hooded skunks

- Pleistocene-AD1450:** *MIMBRES*—U-Bar Cave (2).
2000BC-AD1450: *MIMBRES*—Bobcat Cave (1).
AD550-1000: *GILA*—Tularosa Cave (1); *MIMBRES*—Galaz (1), Las Hermanas (1).
AD550-1130: *GILA*—Woodrow Ruin (1).
AD1000-1130: *MIMBRES*—Mitchell (3).
AD1000-1300: *MIMBRES*—Pinnacle Cave (P).
AD1130-1300: *GILA*—Spurgeon Draw (2).

Mephitis macroura—hooded skunk

- AD550-1000:** *GILA*—Wind Mountain (1).

Mephitis mephitis—striped skunk

- 2000BC-AD1450:** *GILA*—Tularosa Cave (P).

Spilogale sp.—spotted skunks

- 2000BC-AD1450:** *GILA*—Tularosa Cave (P); *MIMBRES*—Bobcat Cave (1).
AD550-1000: *MIMBRES*—Galaz (1).

FAMILY MUSTELIDAE

Mustela frenata—long-tailed weasel

- AD1000-1130:** *GILA*—Saige McFarland (1).
AD1130-1300: *GILA*—Hough (1).

Taxidea taxus—American badger

- 2000BC-AD1450:** *MIMBRES*—Bobcat Cave (35).
AD550-1000: *GILA*—Tularosa Cave (2), Wind Mountain (1); *MIMBRES*—Galaz (2), Mattocks (1), Montezuma (1).
AD550-1300: *GILA*—Tularosa Cave (1).
AD1000-1130: *MIMBRES*—Mattocks (5), Old Town (1).
AD1130-1300: *GILA*—Hough (1); *MIMBRES*—Black Mountain (1), Montoya (3), Walsh (1).
AD1130-1450: *MIMBRES*—76 Draw (7).
AD1300-1450: *GILA*—Ormand Village (1); *MIMBRES*—Janss (2).

FAMILY PROCYONIDAE

Procyonidae—undifferentiated raccoon, coati, and ringtail

- AD550-1000:** *GILA*—Tularosa Cave (2).

AD1000-1300: *GILA*—Tularosa Cave (1).

AD1130-1300: *GILA*—DZ Site (1).

Bassariscus astutus—ringtail

Pleistocene-AD1450: *MIMBRES*—U-Bar Cave (1).

AD550-1000: *GILA*—Gila Cliff Dwellings (1); *MIMBRES*—Galaz (6).

Procyon lotor—northern raccoon

2000BC-AD550: *GILA*—Wood Canyon (1).

AD550-1000: *GILA*—Luna Village (10); *MIMBRES*—NAN Ranch (1).

AD1000-1130: *GILA*—Heron Ruin (1).

AD1130-1300: *GILA*—Fornholt (1), Gila Cliff Dwellings (4), Hough (2); *MIMBRES*—Montoya (1).

AD1300-1450: *GILA*—Villareal II (1); *MIMBRES*—Disert (1).

FAMILY MEPHITIDAE/MUSTELIDAE—undifferentiated skunks/weasels

AD200-1300: *GILA*—WS Ranch (2).

AD550-1000: *GILA*—Tularosa (1); *MIMBRES*—Galaz (1).

AD1130-1300: *GILA*—Spurgeon Draw (1).

FAMILY URSIDAE

Ursus sp.—bears

2000BC-AD550: *GILA*—Eaton (P), Old Peralta (1).

AD200-1000: *GILA*—Beargrass (1).

AD200-1130: *GILA*—Wind Mountain (1).

AD200-1300: *GILA*—WS Ranch (1).

AD550-1000: *GILA*—Wind Mountain (8), Woodrow Ruin (2); *MIMBRES*—Montezuma (2).

AD1130-1300: *GILA*—Hough (4), Spurgeon Draw (1).

AD1300-1450: *MIMBRES*—Janss (2).

Ursus americanus—American black bear

AD200-1130: *GILA*—Wind Mountain (8).

AD550-1000: *GILA*—Wind Mountain (3).

AD1130-1300: *GILA*—Hough (8), Spurgeon Draw (1).

Ursus arctos—brown (grizzly) bear

2000BC-AD1450: *GILA*—Tularosa Cave (P).

AD1000-1130: *MIMBRES*—Mattocks (1).

ORDER ARTIODACTYLA

Artiodactyla—undifferentiated even-toed ungulates

2000BC-AD1450: *GILA*—Old Peralta (130), Raven's Roost (34), Tularosa Cave (181), Wood Canyon (43), Forest Home (4), Redrock 1 #1 (1), Red Ear (4), Haca Negra (5); *MIMBRES*—LA 54812 (1), Bobcat Cave (5).

AD200-550: *GILA*—Duncan Site (8), Ho-Bar (7), Mogollon Village (9), Tularosa Cave (154), Wind Mountain (11); *MIMBRES*—LA 83772 (2), LA 129562 (3), McAnally (5).

AD200-1000: *GILA*—Beargrass (36), Mogollon Village (7); *MIMBRES*—Kipp Ruin (3).

AD200-1130: *GILA*—Wind Mountain (64).

AD200-1300: *GILA*—WS Ranch (407).

AD550-1000: *GILA*—Fence Corner (37), Humming Wire (1), Lazy Meadows (3), Luna Village (48), Mogollon Village (12), Tularosa Cave (200), Turkey Toes (2), Wind Mountain (650), Woodrow Ruin (3); *MIMBRES*—Beauregard (6), Florida Mountain (2), Galaz (91), Harris (8), La Gila Encantada (1), Mattocks (2), Montezuma (16), NAN Ranch (89), Old Town (12).

AD550-1130: *GILA*—Woodrow Ruin (85).

AD550-1300: *GILA*—Tularosa Cave (40).

AD1000-1130: *GILA*—Blacks Bluff (5), Haury's Site (10), Saige McFarland (58), Wind Mountain (18), Woodrow Ruin (2); *MIMBRES*—Columbus Pueblo (3), Cooney Ranch #1 (14), Jackson Fraction (4), Mattocks (161), Mitchell (25), Montezuma (7), NAN Ranch (84), Old Town (3).

AD1130-1300: *GILA*—DZ Site (2), Fornsolt (113), Gila Cliff Dwellings (4), Hough (171), Spurgeon Draw (49), Tularosa Cave (3); *MIMBRES*—Black Mountain (17), Montoya (41), Walsh (137).

AD1130-1450: *MIMBRES*—76 Draw (39).

AD1300-1450: *GILA*—3-Up (558), Ormand Village (130), Villareal II (2); *MIMBRES*—Black Mountain (11), Disert (229), Janss (121), Kipp Ruin (11), Stailey (21).

FAMILY ANTILOCAPRIDAE

Antilocapra americana—pronghorn

2000BC-AD550: *GILA*—Old Peralta (1), Tularosa Cave (26), Wood Canyon (5), Forest Home (1).

2000BC-AD1450: *GILA*—Tularosa Cave (P); *MIMBRES*—Bobcat Cave (23), Doolittle Cave (P).

AD200-550: *GILA*—Duncan Site (2), Mogollon Village (1), Winn Canyon (P), Tularosa Cave (18); *MIMBRES*—LA 83772 (2).

AD200-1000: *GILA*—Mogollon Village (1).

AD200-1130: *GILA*—Wind Mountain (20).

AD200-1300: *GILA*—WS Ranch (5).

AD550-1000: *GILA*—Fence Corner (3), Luna Village (3), Mogollon Village (3), Tularosa Cave (22), Wind Mountain (79); *MIMBRES*—Florida Mountain (5), Galaz (8), Harris (1), La Gila Encantada (1), NAN Ranch (21), Old Town (4).

AD550-1130: *GILA*—Woodrow Ruin (12); *MIMBRES*—Cameron Creek Village (P), Swarts Ruin (P).

AD550-1300: *GILA*—Tularosa Cave (8).

AD1000-1130: *GILA*—Haury's Site (2), Saige McFarland (27), Sawmill (2); *MIMBRES*—Cooney Ranch #1 (4), Mattocks (3), Mitchell (1), NAN Ranch (4).

AD1130-1300: *GILA*—DZ Site (1), Fornsolt (5), Gila Cliff Dwellings (8), Hough (28), Spurgeon Draw (12); *MIMBRES*—Black Mountain (6), Walsh (37).

AD1130-1450: *MIMBRES*—76 Draw (20).

AD1300-1450: *GILA*—3-Up (1), Ormand Village (11), Villareal II (5); *MIMBRES*—Black Mountain (3), Disert (26), Janss (1), Stailey (6).

FAMILY BOVIDAE

Bos sp. —American bison/domestic cattle

AD200-1130: *GILA*—Wind Mountain (1).

AD550-1000: *GILA*—Wind Mountain (2).

Comments: Olsen & Olsen (1996, pg. 405) reported 3 bones as bison (*Bos bison*) or domestic cattle (*Bos taurus*) from Wind Mountain. One of the two found in a pothunter-disturbed site, House X, was identified as a mesial phalanx of *Bos taurus* (domestic cattle).

There has been reluctance among Southwestern archaeologists to be definitive on bison versus cattle remains (Martin et al., 2017). Clearly, cattle didn't arrive until the mid-1600s at the earliest (Brand, 1961), thus we are assuming that the prehistoric bones identified as *Bos* that were in undisturbed context (disturbance is not always discussed in faunal reports, however) are of bison, not cattle (see further comments below).

Bos (cf.) *bison*—American bison

Pleistocene-AD1450: *MIMBRES*—U-Bar Cave (1).

2000BC-AD1450: *GILA*—Tularosa Cave (5), Red Ear (1); *MIMBRES*—Bobcat Cave (2), Doolittle Cave (P).

AD200-1000: *GILA*—Mogollon Village (1).

AD200-1300: *GILA*—WS Ranch (1).

AD550-1000: *GILA*—Luna Village (2), Turkey Foot Ridge (2).

AD550-1130: *MIMBRES*—Swarts Ruin (P).

AD1000-1130: *GILA*—Sawmill (1), X-S-X (24).

AD1130-1300: *GILA*—Gila Cliff Dwellings (26), Hough (4).

Comments: The natural occurrence of modern bison west of the Pecos and the Rio Grande into western New Mexico, eastern Arizona, and northwestern Mexico has long been controversial, with the traditional view being one of historical absence (e.g., Bailey 1931, Findley et al. 1975). As a result, a number of archaeological specimens reported from our

study area are listed as either bison or domestic cattle (*B. taurus*) due, in part, to the widely-held assumption that bison were not a native species (e.g., Bobcat Cave) and, as mentioned above, because of the possibility (as with Wind Mountain) that bones of the late arriving domestic cattle could have been introduced into deposits via bioturbation or other disturbance, and that pre-Hispanic bison may have been widely traded, particularly if hides and dried meat were circulated with some bones still attached (Spielmann et al., 1990). As to their non-native status, there is a growing body of paleontological, archaeological and historical evidence that clearly indicates late prehistoric and early historic presence of plains bison extending into these far western areas of the Southwest (Brand, 1937; Reed, 1955; Di Peso et al., 1974; Agenbroad and Haynes, 1975; Truett, 1996; List et al., 2007; List and Solís, 2008; Huffer, 2013; Truett et al., 2014; Martin et al., 2017). As some of this new evidence suggests (e.g., Huffer 2013, Martin et al. 2017), bison presence and abundance here near the extreme edge of their former range may have waxed and waned in response to climatic shifts in seasonality and precipitation. In northern Mexico, bison are known to have persisted from pre-Hispanic times until early in the nineteenth century (List and Solís, 2008). The present free-ranging transnational population of bison of the Janos region of northwestern Chihuahua and the eastern bootheel of southwestern New Mexico is derived from reintroduced animals.

Ovis canadensis—bighorn sheep

2000BC-AD550: *GILA*— Old Peralta (11), Tularosa Cave (2), Wood Canyon (3), Redrock 1 #1 (1).

2000BC-AD1450: *MIMBRES*—Bobcat Cave (13), Doolittle Cave (P).

AD200-1000: *GILA*— Wind Mountain [7], Beargrass (1).

AD200-1300: *GILA*—WS Ranch (1).

AD550-1000: *GILA*—Fence Corner (3), Luna Village (2), Tularosa Cave (1), Wind Mountain (4); *MIMBRES*—NAN Ranch (2).

AD550-1130: *MIMBRES*—Swarts Ruin (P).

AD550-1300: *GILA*—Tularosa Cave (1).

AD1000-1130: *GILA*—Haury's Site (1), Wind Mountain (1); *MIMBRES*—NAN Ranch (1).

AD1130-1300: *GILA*—Fornholt (1), Hough (7).

AD1130-1450: *MIMBRES*—76 Draw (18).

AD1300-1450: *GILA*—3-Up (2).

FAMILY CERVIDAE

Cervidae—undifferentiated deer

2000BC-AD550: *GILA*—Wood Canyon (18); *MIMBRES*—LA 144921 (1).

AD200-1300: *GILA*—WS Ranch (12).

AD1000-1130: *GILA*—Blacks Bluff (1).

AD1130-1300: *GILA*—Fornholt (9).

AD1300-1450: *GILA*—Ormand Village (18).

Cervus canadensis—wapiti (eastern red deer, elk)

2000BC-AD1450: *GILA*—Raven's Roost (1), Red Ear (2).

AD200-550: *GILA*—Ho-Bar (1).

AD550-1000: *GILA*—Luna Village (1), Turkey Foot Ridge (1), Turkey Toes (2), Wind Mountain (1); *MIMBRES*—Montezuma (1).

AD550-1130: *MIMBRES*—Swarts Ruin (P).

AD1000-1130: *GILA*—Wind Mountain (1); *MIMBRES*—Montezuma (1).

AD1130-1300: *GILA*—Gila Cliff Dwellings (5).

AD1300-1450: *GILA*—3-Up (2); *MIMBRES*—Disert (1).

Odocoileus sp.—deer

2000BC-AD1450: *GILA*—Eaton (P), Old Peralta (1), Raven's Roost (30), Tularosa Cave (74), Wood Canyon (37), Forest Home (48), Red Ear (3); *MIMBRES*—Bobcat Cave (20).

AD200-550: *GILA*—Ho-Bar (17), Mogollon Village (3), SU (82), Tularosa Cave (68), Wind Mountain (10); *MIMBRES*—McAnally (2).

AD200-1000: *GILA*—Beargrass (7), Mogollon Village (1); *MIMBRES*—Kipp Ruin (4).

AD200-1130: *GILA*—Wind Mountain (28).

AD200-1300: *GILA*—WS Ranch (126).

AD550-1000: *GILA*—Fence Corner (34), Lazy Meadows (1), Luna Village (40), MC 110 (2), Mogollon Village (2), Tularosa Cave (109), Turkey Foot Ridge (37), Wind Mountain (595), Woodrow Ruin (5); *MIMBRES*—Beauregard (26), Buffalo Cave (P), Florida Mountain (1), Galaz (58), Harris (34), Kipp Ruin (5), Montezuma (11), NAN Ranch (32), Old Town (1).

AD550-1130: *GILA*—Woodrow Ruin (41); *MIMBRES*—Cameron Creek Village (P).

AD550-1300: *GILA*—Tularosa Cave (30).

AD1000-1130: *GILA*—Blacks Bluff (1), DeFausal/Kartchner/G-12 (26), Haury's Site (2), Redrock Village (P), Saige McFarland (8), Sawmill (8), Wind Mountain (8); *MIMBRES*—Cooney Ranch #1 (2), Jackson Fraction (18), Mattocks (39), Mitchell (1), Montezuma (8), NAN Ranch (60).

AD1000-1300: *GILA*—Tularosa Cave (6); *MIMBRES*—Pinnacle Cave (P).

AD1130-1300: *GILA*—DZ Site (2), Fornholt (53), Hough (307), Spurgeon Draw (4); *MIMBRES*—Black Mountain (1), Montoya (14), Walsh (6).

AD1130-1450: *MIMBRES*—76 Draw (43).

AD1300-1450: *GILA*—3-Up (73), Ormand Village (52), Riverside (2), Villareal II (6); *MIMBRES*—Disert (100), Janss (32), Stailey (4).

Comments: One specimen from the Fornholt site is a burial of a partially articulated individual four to six months old (counted here as one specimen).

Odocoileus hemionus—mule deer

2000BC-AD550: *GILA*—Old Peralta (19), Wood Canyon (9), Forest Home (7); *MIMBRES*—LA 144921 (2).

2000BC-AD1450: *MIMBRES*—Bobcat Cave (9), Doolittle Cave (P).

AD200-550: *GILA*—Duncan Site (1), Promontory (18), Wind Mountain (7).

AD200-1000: *GILA*—Beargrass (3); *MIMBRES*—Kipp Ruin (8).

AD200-1130: *GILA*—Wind Mountain (268).

AD550-1000: *GILA*—Wind Mountain (334); *MIMBRES*—Galaz (5), Harris (26), La Gila Encantada (42), Las Hermanas (2), Montezuma (8).

AD550-1130: *MIMBRES*—Swarts Ruin (P).

AD1000-1130: *GILA*—Haury's Site (21), Heron Ruin (2), Wind Mountain (4); *MIMBRES*—Badger Ruin (3).

AD1130-1300: *GILA*—Gila Cliff Dwellings (142), Hough (2), Spurgeon Draw (22).

Odocoileus virginianus—white-tailed deer

2000BC-AD1450: *MIMBRES*—Bobcat Cave (cf. 3).

AD200-550: *GILA*—Promontory (2).

AD200-1130: *GILA*—Wind Mountain (2).

AD550-1000: *GILA*—Wind Mountain (23); *MIMBRES*—Las Hermanas (2).

AD1130-1300: *GILA*—Gila Cliff Dwellings (22).

ORDER RODENTIA

FAMILY CASTORIDAE

Castor canadensis—American beaver

AD200-1300: *GILA*—WS Ranch (3).

AD1000-1130: *MIMBRES*—Mattocks (2).

AD1130-1300: *GILA*—Gila Cliff Dwellings (7).

Comments: Beavers are native inhabitants of the Gila River drainage, but not the Mimbres (see Figure 30 in Bailey, 1931). Resolving this species' status in the Mimbres drainage has proven somewhat complicated. Our extensive review of the archaeological literature uncovered only one report of beaver remains from the Mimbres Valley, where 44 archaeological assemblages have been analyzed from time periods ranging from the Archaic to Late Postclassic (2000 BC to AD 1450). This report was of two beaver incisors supposedly found at the Classic Mimbres period Mattocks site (Powell, 1977). Subsequent reexamination of these specimens indicates they were misidentified (Michael Cannon, pers. comm.). The only valid record or published report of beaver from anywhere in this drainage, past or present, is by Keith Geluso (in Geluso, 2016), a mammologist with the University of Kansas at Kearney, who in 2014 first found beaver present at two conservation reserve sites along the Mimbres.

We believe this species' current presence in the Mimbres is the result of a relatively recent and unofficial translocation, probably from the Gila River.

Cf. Castor canadensis

2000BC-AD550: *GILA*—Wood Canyon (1).

Comments: This is an odd location with no discussion or body part listed in the report by Duncan (2000).

FAMILY CRICETIDAE

Cricetidae—undifferentiated muroid rodents

2000BC-AD550: *GILA*—Wood Canyon (3); *MIMBRES*—LA 144921 (214).

AD200-550: *MIMBRES*—Tunis School (1).

AD200-1300: *GILA*—WS Ranch (39).

AD550-1000: *MIMBRES*—NAN Ranch (26).

AD1000-1130: *MIMBRES*—NAN Ranch (12).

Microtus sp.—voles

AD550-1000: *MIMBRES*—Galaz (1), Montezuma (1).

AD1130-1300: *MIMBRES*—Walsh (1).

AD1300-1450: *MIMBRES*—Disert (2).

Comments: Members of this genus can be morphologically so similar that they usually require specific teeth or skull structures to be positively identified to species (Smartt, 1977). A good example is *Microtus pennsylvanicus* (Southwestern populations considered *M. drummondii* by Jackson and Cook, 2020), a wet meadow/riparian-dependent vole that has yet to be identified from any archeological site in the study area, but which, if looked for more carefully (i.e., finer screening; see Scarbrough and Harris, 1985), would, like muskrats and other riparian and aquatic species, be a revealing marker of past environments. There are Late Pleistocene-Holocene fossils of *M. pennsylvanicus* from cave deposits farther south as well as north of the study area (Messing, 1986; Scarbrough, 1986), and, until recently, was extant as an isolated colony to the north near Aragon along the Tularosa River, upper San Francisco River drainage (Anderson and Hubbard, 1971; Frey, 2004), and farther south near Galeana in the Rio Santa Maria of the Guzmán Basin, NW Chihuahua (Messing, 1986; List et al., 2010; López-González and García-Mendoza, 2012).

Microtus mogollonensis--Mogollon vole

AD1000-1130: *GILA*—Saige McFarland (1); *MIMBRES*—Mattocks (4).

AD1300-1450: *GILA*—Ormand Village (5).

Comments: Extant at higher elevation in grassland-associated habitats of both watersheds (Geluso, 2016), and common as a Late Wisconsin/Holocene fossil throughout the southern cave sites of New Mexico (Harris, 2018). Formerly synonymized with *M. mexicanus* (Frey, 2004).

Microtus montanus—montane vole

AD1130-1300: *GILA*—Hough (1).

Comments: Harris (2018) reported Late Wisconsin/Holocene specimens that are questionably this vole from Howell's Ridge Cave, Little Hatchet Mountains, just north of New Mexico's bootheel. Today found from northern New Mexico, northward, with isolated relic populations (as *M. m. arizonensis*) probably still extant in the upper San Francisco drainage (Frey, 2004).

Neotoma sp.—woodrats

Pleistocene-AD1450: *MIMBRES*—U-Bar Cave (1).

2000BC-AD550: *GILA*—Tularosa Cave (22), Wood Canyon (2), Forest Home (3), Redrock 1 #1 (1); *MIMBRES*—LA 144921 (28).

2000BC-AD1450: *MIMBRES*—Bobcat Cave (107).

AD200-550: *GILA*—Duncan Site (3), Mogollon Village (1), Tularosa Cave (8); *MIMBRES*—LA 129562 (4).

AD200-1000: *GILA*—Beargrass (2), Mogollon Village (1); *MIMBRES*—Kipp Ruin (1).

AD200-1130: *GILA*—Wind Mountain (2).

AD200-1300: *GILA*—WS Ranch (107).

AD550-1000: *GILA*—Mogollon Village (1), Tularosa Cave (7), Turkey Foot Ridge (1), Wind Mountain (27), Woodrow Ruin (6); *MIMBRES*—Beauregard (13), Buffalo Cave (P), Galaz

(37), Harris (57), La Gila Encantada (18), Montezuma (14), NAN Ranch (90), Old Town (4).

AD550-1130: *GILA*—Woodrow Ruin (17).

AD550-1300: *GILA*—Tularosa Cave (1).

AD1000-1130: *GILA*—DeFausal/Kartchner/G-12 (1), Saige McFarland (12), Wind Mountain (2); *MIMBRES*—Jackson Fraction (6), Mattocks (12), Montezuma (7), NAN Ranch (118).

AD1130-1300: *GILA*—Fornholt (9); *MIMBRES*—Black Mountain (1).

AD1130-1450: *MIMBRES*—76 Draw (11).

AD1300-1450: *GILA*—Ormand Village (2), Villareal II (1); *MIMBRES*—Disert (10), Janss (1).

Neotoma albigula—western white-throated woodrat

2000BC-AD1450: *MIMBRES*—Bobcat Cave (6).

AD200-550: *GILA*—Mesa Top (2).

AD200-1130: *GILA*—Wind Mountain (1).

AD550-1000: *GILA*—Luna Village (3); *MIMBRES*—Harris (1). **AD1130-1300:** *GILA*—Gila Cliff Dwellings (22), Hough (1), Spurgeon Draw (1).

Neotoma lepida—desert woodrat

AD550-1000: *MIMBRES*—Harris (4).

Neotoma mexicana—Mexican woodrat

AD550-1000: *GILA*—Fence Corner (9), Luna Village (60).

AD1130-1300: *GILA*—Hough (9), Spurgeon Draw (23).

Ondatra zibethicus—common muskrat

2000BC-AD1450: *GILA*—Tularosa Cave (1), Redrock 1 #1 (1), Red Ear (2).

AD200-550: *GILA*—Mogollon Village (1), Tularosa Cave (16).

AD200-1300: *GILA*—WS Ranch (9).

AD550-1000: *GILA*—Mogollon Village (1), Tularosa Cave (5).

AD550-1300: *GILA*—Tularosa Cave (2).

AD1000-1130: *GILA*—Saige McFarland (3); *MIMBRES*—Mattocks (1), Mitchell (1), NAN Ranch (13).

AD1130-1300: *GILA*—DZ Site (2), Gila Cliff Dwellings (6), Hough (8), Spurgeon Draw (1).

AD1300-1450: *GILA*—Ormand Village (3).

Comments: Muskrats are extant in the Gila drainages. Prehispanic records of this semi-aquatic species from Mimbres sites are of particular interest as there are no known historic records or recent reports of their presence in this watershed. Langenwaller (1979) was the first to note this absence of muskrats beyond the Classic Mimbres period and to suggest that high human populations and associated environmental impact during this period resulted in this species' extirpation. That muskrats had a long tenure in this drainage well before this period is evidenced by fossil remains from Baldy Peak Cave in the Florida Mountains that date back to the Late Wisconsin/Holocene, to a time when the Mimbres River was an active river far south of where it flows today (Harris, 2018). In more recent times, muskrats probably occurred in the Guzmán Basin of NW Chihuahua based on the remains of a muskrat excavated from Paquimé in deposits from the Medio Period, AD 1300-1450 (Di Peso et al., 1974). Their possible persistence today in northern Mexico could be farther east in the Rio Grande drainage (Merrill and López-González, 2007), although Lopez-González and Garcia-Mendoza (2012) now consider them probably extirpated from Chihuahua.

Onychomys sp.—grasshopper mice

2000BC-AD1450: *MIMBRES*—Bobcat Cave (1).

AD200-1300: *GILA*—WS Ranch (2).

Onychomys leucogaster—northern grasshopper mouse

2000BC-AD550: *MIMBRES*—LA 144921 (4).

AD550-1000: *GILA*—Luna Village (1); *MIMBRES*—Las Hermanas (1).

AD1000-1130: *GILA*—Heron Ruin.

AD1130-1300: *GILA*—Hough (3).

Cf. Onychomys torridus—southern grasshopper mouse

2000BC-AD1450: *MIMBRES*—Bobcat Cave (1).

Peromyscus sp.—deer mice

2000BC-AD1450: *MIMBRES*—Bobcat Cave (1).

AD200-1300: *GILA*—WS Ranch (27).

AD550-1000: *GILA*—Luna Village (2), Wind Mountain (1); *MIMBRES*—Galaz (8), Harris (37), Montezuma (1), NAN Ranch (1).

AD1000-1130: *GILA*—DeFausal/Kartchner/G-12 (1); *MIMBRES*—Jackson Faction (1), Mattocks (9), Mitchell (1), NAN Ranch (25).

AD1300-1450: *GILA*—Ormand Village (1); *MIMBRES*—Janss (1).

Peromyscus boylii—brush deer mouse

AD1130-1300: *GILA*—Hough (1).

Peromyscus leucopus—white-footed deer mouse

2000BC-AD1450: *GILA*—Tularosa Cave (P).

AD550-1000: *GILA*—Luna Village (2).

AD1130-1300: *GILA*—Hough (6), Spurgeon Draw (1).

Peromyscus maniculatus—North American deer mouse

2000BC-AD550: *MIMBRES*—LA 144921 (1).

2000BC-AD1450: *GILA*—Tularosa Cave (P).

AD550-1000: *GILA*—Luna Village (26). **AD1130-1300:** *GILA*—Hough (22).

Reithrodontomys sp.—harvest mice

AD550-1000: *MIMBRES*—Galaz (1).

Reithrodontomys megalotis—western harvest mouse

AD200-550: *MIMBRES*—LA 129562 (1).

AD550-1000: *MIMBRES*—Montezuma (2).

Sigmodon sp.—cotton rats

2000BC-AD1450: *MIMBRES*—Bobcat Cave (6).

AD200-1000: *MIMBRES*—Kipp Ruin (1).

AD550-1000: *GILA*—Wind Mountain (2). *MIMBRES*—Montezuma (3), NAN Ranch (5).

AD1000-1130: *MIMBRES*—Cooney Ranch #1 (1), NAN Ranch (55).

AD1130-1300: *MIMBRES*—Montoya (1).

Sigmodon fulviventer—tawny-bellied cotton rat

2000BC-AD1450: *MIMBRES*—Bobcat Cave (1).

Sigmodon hispidus—hispid cotton rat

2000BC-AD550: *MIMBRES*—LA 144921 (29).

AD200-550: *MIMBRES*—LA 83772 (1).

AD200-1000: *GILA*—Beargrass (2).

AD550-1000: *GILA*—Luna Village (5).

AD1130-1300: *GILA*—Spurgeon Draw (1).

Sigmodon cf. ochrognathus—yellow-nosed cotton rat

AD1000-1130: *GILA*—Saige McFarland (1).

Comments: The identification of this species by Gillespie (1987) was based mainly on a single, comparatively small right mandible having a less broad, less robust articular process relative to either *S. fulviventer* or *S. hispidus*. Today all three species are inhabitants of the Gila Valley near this archaeological site, but it remains unclear how long they have co-occurred in this area (Geluso, 2009).

FAMILY DIPODIDAE

Zapus cf. hudsonius—meadow jumping mouse

AD1000-1130: *GILA*—Heron Ruin (2).

Comments: The analyst from Heron Ruin did not specify the elements present or any other criteria on which the identification was based despite what ought to have been considered an unusual occurrence. Reexamining this specimen to confirm this identification is desirable, but unfortunately the current whereabouts of this archaeological collection are unknown. Lorna Scarbrough (1986) reported early Holocene remains of *Z. hudsonius* from Bat Cave just north of the study area at the southern edge of the Plains of San Agustin. The closest extant populations of this riparian-dependent species occur in the White and Mogollon mountains of Arizona (Hoffmeister, 1986), and along the middle Rio Grande Valley of New Mexico, northward (Malaney et al., 2012). Most recently, a population of meadow jumping mice was

discovered along the Blue River just inside New Mexico, some 14 km southwest of Luna (NMGF, 2018).

FAMILY ERETHIZONTIDAE

Erethizon dorsatum—North American porcupine

2000BC-AD550: *GILA*—Tularosa Cave (16), Forest Home (4).

2000BC-AD1450: *MIMBRES*—Bobcat Cave (10), Doolittle Cave (P).

AD200-550: *GILA*—Tularosa Cave (9).

AD550-1000: *GILA*—Tularosa Cave (21).

AD550-1300: *GILA*—Tularosa Cave (1).

AD1000-1130: *GILA*—Heron Ruin (4).

AD1130-1300: *GILA*—Hough (1).

AD1300-1450: *MIMBRES*—Black Mountain (1).

FAMILY GEOMYIDAE

Geomyidae—undifferentiated pocket gophers

2000BC-AD550: *MIMBRES*—LA 144921 (3).

AD200-550: *MIMBRES*—LA 129562 (1).

AD200-1300: *GILA*—WS Ranch (22).

AD550-1000: *GILA*—Wind Mountain (7); *MIMBRES*—NAN Ranch (92), Old Town (18).

AD550-1130: *GILA*—Woodrow Ruin (3); *MIMBRES*—Swarts Ruin (P).

AD1000-1130: *GILA*—Wind Mountain (1); *MIMBRES*—NAN Ranch (158), Old Town (2).

AD1130-1300: *GILA*—Fornholt (1), Spurgeon Draw (1).

Cratogeomys castanops—yellow-faced pocket gopher

AD550-1000: *GILA*—Luna Village (2).

AD1130--1300: *MIMBRES*—Black Mountain (1).

Comments: The current range of this species in New Mexico does not extend west of the Rio Grande (Findley et al., 1975); however, it's clear from paleontological (Hidalgo County: U-Bar Cave—Late Wisconsin) (Harris, 2018) and archaeological data (San Juan Basin: Middle to Late Holocene) (Lyman, 1983) that this gopher was more widely distributed prehistorically. Synonym: *Pappogeomys castanops*.

Geomys sp.

2000BC-AD1450: *GILA*—Haca Negra (3).

AD200-1000: *MIMBRES*—Kipp Ruin (24).

AD550-1000: *MIMBRES*—La Gila Encantada (6).

AD1300-1450: *GILA*—Hough (10); *MIMBRES*—Kipp Ruin (1).

Comments: Herein we incorporate all site records listed as *Geomys* sp. and also as *Geomys bursarius* (plains pocket gopher). Although the latter is listed in a few archaeological sites (Martin et al., 1952; Heller, 1976; Oakes, 1999), this is likely in error as the study area is well out of its range, both modern and late Pleistocene/early Holocene (Harris, 2018), and the methodology used for identifying what ought to be unusual occurrences was not discussed.

Geomys arenarius—desert pocket gopher

AD200-1130: *GILA*—Wind Mountain (1).

AD550-1000: *GILA*—Wind Mountain (2).

Comments: The closest extant records of this Chihuahuan Desert gopher to the Wind Mountain site are from the Deming and Columbus areas of Luna County (Findley et al., 1975).

Thomomys sp.

2000BC-AD550: *GILA*—Tularosa Cave (6).

2000BC-AD1450: *MIMBRES*—Bobcat Cave (1).

AD200-550: *GILA*—SU (1).

AD200-1300: *GILA*—WS Ranch (14).

AD550-1000: *GILA*—Tularosa Cave (3), Turkey Foot Ridge (2), Woodrow Ruin (4), Wind Mountain (11); *MIMBRES*—Beaugard (7), Galaz (118), Montezuma (34), NAN Ranch (79).

AD550-1130: *GILA*—Woodrow Ruin (4).

AD550-1300: *GILA*—Tularosa Cave (9).

AD1000-1130: *GILA*—Woodrow Ruin (1); *MIMBRES*—Blacks Bluff (1), Jackson Faction (1), NAN Ranch (447).

AD1130-1300: *GILA*—Fornholt (13); *MIMBRES*—Montoya (14), Walsh (7).

AD1300-1450: *MIMBRES*—Disert (74), Janss (25), Stailey (3).

Thomomys bottae—Botta's pocket gopher

2000BC-AD550: *GILA*—Wood Canyon (1), Forest Home (2).

AD200-550: *MIMBRES*—LA 83772 (2).

AD200-1000: *GILA*—Beargrass (6).

AD200-1130: *GILA*—Wind Mountain (5).

AD550-1000: *GILA*—Fence Corner (1), Humming Wire (1), Lazy Meadows (2), Luna Village (120), Wind Mountain (77); *MIMBRES*—Beauregard (10), Galaz (10), Harris (18), Mattocks (2), Montezuma (16).

AD1000-1130: *GILA*—Haury's Site (2), Saige McFarland (85), Wind Mountain (1); *MIMBRES*—Jackson Fraction (2), Mattocks (124), Mitchell (3), Montezuma (8).

AD1130-1300: *GILA*—DZ Site (4), Gila Cliff Dwellings (29), Hough (50), Spurgeon Draw (4).

AD1300-1450: *GILA*—3-Up (10), Ormand Village (8), Villareal II (2); *MIMBRES*—Disert (2).

Comments: Herein we incorporate all site records listed as *T. umbrinus*, a taxon once widely recognized to include *bottae* within it (Hall and Kelson, 1959; Hall, 1981). The name *T. umbrinus* is currently restricted in New Mexico to an isolated population of southern pocket gophers (as *T. u. emotus*) in the Animas Mountains, Hidalgo County (Hinesley and Thaeler, 1977; Frey, 2004).

FAMILY HETEROMYIDAE

Heteromyidae—undifferentiated pocket mice, kangaroo rats

AD550-1000: *GILA*—Mogollon Village (1).

Dipodomys sp.—kangaroo rats

2000BC-AD550: *GILA*—Wood Canyon (5); *MIMBRES*—LA 144921 (4).

2000BC-AD1450: *MIMBRES*—Bobcat Cave (6).

AD200-550: *MIMBRES*—LA 129562 (1).

AD200-1000: *GILA*—Mogollon Village (2); *MIMBRES*—Kipp Ruin (9).

AD200-1300: *GILA*—WS Ranch (1).

AD550-1000: *GILA*—Wind Mountain (1); *MIMBRES*—Beauregard (1), Florida Mountain (1), Galaz (24), La Gila Encantada (1), Las Hermanas (14), NAN Ranch (4).

AD1000-1130: *GILA*—Saige McFarland (8), Wind Mountain (1); *MIMBRES*—Cooney Ranch #1 (2), Jackson Fraction (1), Mitchell (2).

AD1130-1300: *MIMBRES*—Montoya (1), Walsh (1).

AD1130-1450: *GILA*—3-Up (1), Riverside (1), Villareal II (1); *MIMBRES*—76 Draw (1), Disert (8).

Dipodomys ordii—Ord's kangaroo rat

2000BC-AD1450: *MIMBRES*—Bobcat Cave (2).

AD1130-1300: *GILA*—Spurgeon Draw (21).

Cf. *Dipodomys merriami*—Merriam's kangaroo rat

2000BC-AD1450: *MIMBRES*—Bobcat Cave (1).

Dipodomys spectabilis—banner-tailed kangaroo rat

2000BC-AD1450: *MIMBRES*—Bobcat Cave (30).

AD200-550: *MIMBRES*—LA 83772 (1).

AD550-1000: *GILA*—Luna Village (5).

AD550-1130: *GILA*—Saige McFarland (1).

Chaetodipus/Perognathus sp.—spiny and silky pocket mice

2000BC-AD1450: *MIMBRES*—Bobcat Cave (4).

AD200-550: *MIMBRES*—LA 129562 (2).

AD200-1300: *GILA*—WS Ranch (10).

AD550-1000: *MIMBRES*—Galaz (1).

AD1000-1130: *MIMBRES*—Mattocks (5), NAN Ranch (4).

AD1130-1300: *GILA*—Fornholt (1); *MIMBRES*—Montoya (1), Walsh (8).

AD1130-1450: *MIMBRES*—Disert (1).

AD1300-1450: *MIMBRES*—Stailey (1).

Comments: Prior to Hafner and Hafner (1983), all of New Mexico's pocket mice were included in the genus *Perognathus*, with *Chaetodipus*, the spiny pocket mice, a subgenus. Because of this, there is no way to discern which genus is now represented from the earlier records without examination of the specimens involved and, even then, this would be difficult given the close similarity of the various species' assorted skeletal elements recovered from archaeological sites. Currently, a half dozen or so species in both genera are known to occur in our study area (Findley et al., 1975; Frey, 2004; Geluso, 2016). All are found primarily in arid grassland and desert habitats at lower elevations.

Cf. Chaetodipus intermedius—rock pocket mouse
2000BC-AD1450: *MIMBRES*—Bobcat Cave (1).

Comments: Synonym: *Perognathus intermedius*

Cf. Perognathus flavescens—plains pocket mouse
AD1000-1130: *GILA*—Heron Ruin (1).
AD1130-1300: *GILA*—Hough (1).

Comments: Oakes (1999) provides no discussion of the skeletal element recovered or how it was identified from the upper San Francisco Hough site. Synonym: *P. apache* (but see Hoffmeister, 1986; Frey, 2004; Neiswenter and Riddle, 2011).

FAMILY SCIURIDAE

Sciuridae—undifferentiated

2000BC-AD550: *GILA*—Tularosa Cave (69); *MIMBRES*—LA 144921 (18).

2000BC-AD1450: *MIMBRES*—Bobcat Cave (2).

AD200-550: *GILA*—Tularosa Cave (41).

AD200-1000: *GILA*—Beargrass (4).

AD200-1130: *GILA*—Wind Mountain (6).

AD200-1300: *GILA*—WS Ranch (7).

AD550-1000: *GILA*—Tularosa Cave (122), Wind Mountain (16); *MIMBRES*—Beauregard (1), Galaz (6), Harris (11), Montezuma (5), NAN Ranch (4), Old Town (1).

AD550-1130: *MIMBRES*—Swarts Ruin (P).

AD550-1300: *GILA*—Tularosa Cave (10).

AD1000-1130: *GILA*—Saige McFarland (9), Wind Mountain (2), Woodrow Ruin (2);
MIMBRES—Jackson Faction (1), Mattocks (11), Mitchell (3), Montezuma (1), NAN Ranch (9).

AD1000-1300: *GILA*—Tularosa Cave (1).

AD1130-1300: *GILA*—Fornholt (8), Hough (1); *MIMBRES*—Black Mountain (1), Walsh (8).

AD1300-1450: *GILA*—3-Up (1); *MIMBRES*—Disert (34), Janss (2).

Ammospermophilus harrisi—Harris's antelope squirrel

AD200-1000: *GILA*—Beargrass (2).

AD1300-1450: *GILA*—3-Up (2).

Comments: This Lower Sonoran Desert species has a very limited distribution in southwestern New Mexico. Documented records are from the Gila River near Redrock and from numbers of locations in New Mexico's bootheel (Frey, 2004; Geluso, 2009). A recent phylogeographic study by Mantooth et al. (2013) identified 2 distinct lineages of *A. harrisi*, with southwestern NM and eastern AZ populations genetically distinct from those of western AZ and Sonora.

Ammospermophilus leucurus—white-tailed antelope squirrel

AD1130-1300: *GILA*—Hough (1).

Comments: The identification of this desert-to-foothills species as reported without details by Oates (1999) from this Mogollon Highlands site in the upper San Francisco River basin seems unlikely. More likely, and surprisingly not recorded from any site in her study, would be the somewhat larger *Callospermophilus lateralis*, the golden-mantled ground squirrel, a common inhabitant of this area, or for that matter, any of the more closely-sized chipmunks such as *Tamias cinereicollis*, the gray-collared chipmunk.

Cynomys sp.—prairie dogs

2000BC-AD1450: *GILA*—Tularosa Cave (19); *MIMBRES*—LA 144921 (10), Bobcat Cave (32).

AD200-550: *GILA*—Tularosa Cave (8).

AD550-1000: *GILA*—Tularosa Cave (24), Turkey Foot Ridge (2), Woodrow Ruin (2); *MIMBRES*—Galaz (4), Motezuma (1), NAN Ranch (22).
AD550-1130: *GILA*—Woodrow Ruin (2); *MIMBRES*—Swarts Ruin (P).
AD550-1300: *GILA*—Tularosa Cave (5).
AD1000-1130: *GILA*—SU Tank (1); *MIMBRES*—NAN Ranch (7).
AD1000-1300: *GILA*—Tularosa Cave (1); *MIMBRES*—Pinnacle Cave (P).
AD1130-1300: *GILA*—Fornholt (2), Hough (2); *MIMBRES*—Black Mountain (3), Montoya (3), Walsh (5).
AD1130-1450: *MIMBRES*—76 Draw (13).

Cynomys gunnisoni—Gunnison’s prairie dog

2000BC-AD1450: *GILA*—Red Ear (1).
AD550-1000: *GILA*—Fence Corner (2), Humming Wire (1), Luna Village (26).
AD1000-1130: *GILA*—Haury’s Site (1), Heron Ruin (1), SU Tank (9).
AD1130-1300: *GILA*—Hough (132), Spurgeon Draw (61).

Comments: Gunnison’s prairie dogs are currently found in the northwestern third of the state, from the northern parts of the Mogollon Mountains and the Plains of San Augustin northward (Findley et al., 1975). This species once ranged farther south as fossil remains are known from the Mid-Wisconsin deposits of U-Bar Cave, Hidalgo County and the Late Wisconsin/Holocene deposits of Howell’s Cave, Little Hatchet Mountains (Harris, 2018).

Cynomys ludovicianus-black-tailed prairie dog

2000BC-AD1450: *MIMBRES*—Bobcat Cave (16).
AD200-550: *MIMBRES*—LA 83772 (2).
AD550-1000: *GILA*—Luna Village (4), Wind Mountain (2).
AD1000-1130: *GILA*—Saige McFarland (19), Wind Mountain (2).
AD1130-1300: *GILA*—Gila Cliff Dwellings (1).
AD1300-1450: *GILA*—Ormand Village (8), Villareal II (8).

Marmota flaviventris--yellow-bellied marmot

AD 1130-1300: *GILA*—Gila Cliff Dwellings (4).

Comments: Extant populations of this western species are restricted to the higher mountains of northern New Mexico (Findley et al., 1975); none are currently found in neighboring Arizona (Hoffmeister, 1986). Based on fossil records, however, this marmot once occurred far south of its present range (Frase and Hoffman, 1980). Late Pleistocene records from within our study area include Walter Hough’s (1914) original discovery of the partial skull of a marmot in Tularosa Cave, which was confirmed by Howell (1915) as *Marmota* sp., and based on distribution, as *Marmota* cf. *flaviventris* of Late Wisconsin age by Harris (2018). Harris also reported Mid-Late Wisconsin marmot remains from U-Bar Cave (Alamo Hueco Mountains, Hidalgo County), and Late Wisconsin-Holocene remains from Baldy Peak Cave in the Florida Mountains south of Deming. With this as background, the presence of four (minimal faunal count) yellow-bellied marmots from the late 13th century Gila Cliff Dwellings (McKusick, 1986) is of considerable interest. Yellow-bellied marmot remains of similar age have also been reported from the Keet Seel cliff dwellings site in northeastern Arizona (Lange, 1956). Harris (1970) hypothesized that *Marmota flaviventris* is affected in their geographic and altitudinal distribution by seasonality of precipitation, specifically wetter winters resulting in food-rich springs.

Otospermophilus/Xerospermophilus (formerly *Spermophilus*, *Citellus*) sp.

Pleistocene-AD1450: *MIMBRES*—U-Bar Cave (1).
2000BC-AD1450: *MIMBRES*—Bobcat Cave (1).
AD200-550: *MIMBRES*—LA 83772 (4).
AD200-1000: *GILA*—Beargrass (1).
AD550-1000: *GILA*—Luna Village (3); *MIMBRES*—Beauregard (8), Galaz (2), Montezuma (5), NAN Ranch (6), Old Town (2).
AD1000-1130: *GILA*—Sawmill (1); *MIMBRES*—Mattocks (12), Montezuma (2), NAN Ranch (5).
AD1130-1300: *GILA*—Fornholt (1), Hough (2); *MIMBRES*—Montoya (2).
AD1300-1450: *MIMBRES*—Black Mountain (1), Janss (6), Stailey (2).

Otospermophilus variegatus—rock squirrel

2000BC-AD1450: *GILA*—Tularosa Cave (P); *MIMBRES*—Bobcat Cave (6).

2000BC-AD550: *GILA*—Tularosa Cave (2).

AD200-550: *GILA*—SU (2), Tularosa Cave (2).

AD200-1000: *GILA*—Mogollon Village (1); *MIMBRES*—Kipp Ruin (2).

AD200-1130: *GILA*—Wind Mountain (5).

AD200-1300: *GILA*—WS Ranch (10).

AD550-1000: *GILA*—Tularosa Cave (3), Wind Mountain (54); *MIMBRES*—Las Hermanas (2), NAN Ranch (7).

AD550-1300: *GILA*—Tularosa Cave (1).

AD1000-1130: *GILA*—Wind Mountain (2); *MIMBRES*—Jackson Faction (2), NAN Ranch (14).

AD1130-1300: *GILA*—Fornholt (2), Gila Cliff Dwellings (18), Hough (1), Spurgeon Draw (1).

AD1300-1450: *MIMBRES*—Stailey (1).

Sciurus sp.—tree squirrels

AD200-550: *GILA*—Tularosa Cave (5).

AD550-1300: *GILA*—Tularosa Cave (2).

AD1000-1130: *MIMBRES*—Mitchell (1), NAN Ranch (6).

AD1300-1450: *MIMBRES*—Janss (1).

Comments: All unidentified *Sciurus* remains from Mimbres sites should be reexamined for species identity, if possible, as there is a long-standing debate as to whether the Arizona gray squirrel (*Sciurus arizonensis*), a mid-elevation, broadleaf riparian species, has had a long tenure in the valley or is now present due to recent range expansion (see Frey et al. 2008).

Sciurus aberti—Abert's squirrel

2000BC-AD550: *GILA*—Forest Home (3).

AD200-1000: *GILA*—Beargrass (1).

AD550-1000: *GILA*—Fence Corner (2), Luna Village (2).

AD1000-1130: *GILA*—Haury's Site (1), Riverside (1).

AD1130-1300: *GILA*—Gila Cliff Dwellings (1), Hough (13), Spurgeon Draw (1).

Tamias sp.—chipmunks

AD200-1000: *GILA*—Beargrass (1).

AD550-1000: *MIMBRES*—Beauregard (4).

AD1000-1130: *GILA*—X-S-X (1); *MIMBRES*—Jackson Faction (1), Mattocks (1).

AD1450+: *GILA*—LA 129571 (2).

Tamias dorsalis—cliff chipmunk

2000BC-AD550: *MIMBRES*—LA 144921 (14).

AD200-550: *MIMBRES*—LA 129562 (56).

AD550-1000: *MIMBRES*—Las Hermanas (8).

AD1000-1130: *GILA*—X-S-X (1).

AD1130-1300: *GILA*—Gila Cliff Dwellings (1).

Tamiasciurus fremonti—Southwestern red squirrel

AD1130-1300: *GILA*—Hough (1).

Comments: Red squirrels are restricted to higher elevation conifer forests. Hope et al. (2016) recognized the southwestern populations of red squirrel as a distinct species from *T. hudsonicus*.

Xerospermophilus pilosoma—spotted ground squirrel

2000BC-AD550: *MIMBRES*—LA 144921 (1).

AD200-550: *MIMBRES*—LA 83772 (1).

AD550-1000: *GILA*—Luna Village (1), Turkey Toes (5), Wind Mountain (7); *MIMBRES*—Las Hermanas (2).

AD1000-1130: *GILA*—Heron Ruin (2).

AD1130-1300: *GILA*—Hough (1).

Comments: This is a species found primarily in arid grassland and desert habitats at lower elevations, which calls into question records from the Mogollon Highlands (i.e., Hough, Luna Village, Turkey Toes) near the northern, more montane limits of the study area, where another

small ground squirrel, *Ictidomus tridecemlineatus* (thirteen-lined ground squirrel) may be more likely. See Jones (2016) for Negrito Airstrip, Collins Park, and other Catron County specimen records of *I. tridecemlineatus*.

APPENDIX 3—THE HUMAN CONTEXT

Human activities have been influencing the landscape and animal communities of southwestern New Mexico for millennia. These recursive interactions began when the first mobile foragers moved into the area over 10,000 years ago, and impacts became increasingly substantial after AD 200 as people began to gather in more sedentary villages with an increased focus on farming and as human populations increased. Archaeological evidence for such impacts includes changes in soil fertility (Sandor and Gersper, 1988), in plant community composition (Minnis, 1985), and in the relative abundance of many animal taxa (Cannon, 2000; Schollmeyer, 2018). Archaeological information also informs us of changes in animal communities and the distribution of individual taxa over time, whether related to human activities, natural causes, or both (e.g., Lyman, 1983).

The earliest archaeological evidence for human activities in the study area is from the Paleoindian Period (9500-6000 BC). This evidence consists primarily of projectile points in shapes characteristic of this era, and no information on archaeological animal bone is available from our specific study area; instead, animal data comes from paleontological studies during this time period (e.g., Harris 1993). Slightly more archaeological evidence is available for the study area during the Archaic period (6000BC-AD200), especially the later Archaic period after about 2000 BC. During this time, smaller animals and plant resources became increasingly important in the human diet. Archaic period people had a highly mobile lifestyle and relied primarily on wild resources, although agriculture gradually became more important late in that period. Paleoethnobotanical evidence indicates maize cultivation in parts of the Southwest by about 2200 BC (Diehl, 2005), although the earliest dates for maize in the study area are around 300 BC (Anyon et al., 2017). In areas with evidence for agriculture before AD 200, the period of early farming is often referred to as the Early Agricultural period rather than the Archaic period (abbreviated here as “E Ag”).

The trend towards increasing sedentism, reliance on agriculture, and larger and more permanent villages continued over the next eight hundred years in the study area. Archaeologists refer to the farming groups of this region from AD 200 to 1450 as part of an archaeological culture area labeled Mogollon. During the Early Pithouse period (AD 200-550), people lived in small villages of round or oval semi-subterranean pithouses and used undecorated brownware pottery. People used a mixed subsistence strategy of foraging wild resources augmented by maize agriculture, and occupations were somewhat sedentary with seasonal movement between pithouse clusters (Diehl and LeBlanc 2001). By the Late Pithouse period (AD 550-1000), people lived in deeper pithouses that transitioned from circular to rectangular in shape over time and were clustered into villages of up to 200 structures. Villagers relied more heavily on maize agriculture during this period, and villages were located on terraces above river drainages near agricultural land and show much less evidence for frequent residential movement. Pottery was at first decorated with red slip (a thin layer of red clay over the brown clay pot), transitioning to painted red-on-white and then black-on-white designs.

During the Classic Mimbres period (AD 1000-1130), people began building cobble masonry surface pueblos of up to 200 rooms in many of the same locations as their earlier pithouse villages. Human populations reached their highest pre-Columbian levels during this period in the Mimbres Valley and upper Gila drainage. Agricultural foods were a primary component of villagers’ diets, with fields watered by rainfall and runoff and by systems of small check-dams in some areas and canal irrigation in others (Lekson 1992). Decorated pottery consisted almost entirely of the well-known Mimbres Classic Black-on-white bowls and jars most people now associate with the Mimbres area.

Around AD 1130, people stopped making the iconic black-on-white pots and changed their settlement patterns dramatically. In the upper Gila area, there is very little evidence of sedentary

farming populations from 1130 through the 1200s, and most residents must have moved away. The Mimbres Valley also saw a much-reduced population during this time, although small numbers of people continued to live in some villages there. In the San Francisco drainage area, human populations rose, reaching their peak levels in the 1200s (Oakes 1999).

Another dramatic change in human population distribution took place just before AD 1300, when people in the upper Gila and Mimbres drainages re-aggregated into large adobe pueblos of the Cliff phase Salado period (AD 1300-1450). In the San Francisco drainage area, human populations declined dramatically during the first part of this period (Oakes 1999). Although canal irrigation seems likely near the large Cliff phase adobe pueblos, no evidence for it has yet been uncovered (Lekson, 2002). The large villages of the upper Gila and Mimbres areas included a multiethnic population with ancestors from the local area, as well as people descended from migrants from the Kayenta area of northeastern Arizona (Clark et al. 2014). Pottery in this period was painted with black, white, and red designs archaeologists view as linking it to a larger regional Salado religion or ideology that helped socially integrate an increasingly diverse population. After AD 1450, sedentary farmers moved out of the upper Gila and Mimbres drainages; their descendants today live in the modern Southwestern pueblos, including Zuni, Hopi, Acoma, and Laguna. By the time of the earliest Spanish written records the region was home to mobile Apache people, many of whose descendants are members of the Fort Sill, San Carlos, and Mescalero Apache tribes. The physical remains of their camp sites are extremely difficult for archaeologists to recognize, and archaeological data from the period from 1450 to the time of European contact is very scarce.

PUBLICATIONS OF THE
MUSEUM OF SOUTHWESTERN BIOLOGY UNIVERSITY OF NEW MEXICO
<https://digitalrepository.unm.edu/msb/>

The publications of the Museum of Southwestern Biology of the University of New Mexico are issued under the auspices of the Dean of the College of Arts and Sciences and the Director of the Museum of Southwestern Biology. Short research studies that are specimen-based are published as Occasional Papers, whereas longer contributions appear as Special Publications. All are peer-reviewed, numbered separately, and published on an irregular basis.

The preferred format for citing the Museum's publications is Occasional Paper (or Special Publication), Museum of Southwestern Biology, The University of New Mexico, Albuquerque, NM. Authors interested in submitting scholarly work for publication should first contact the Managing Editor, Museum Publications, Museum of Southwestern Biology for instructions.

©2020. The Museum of Southwestern Biology,
The University of New Mexico, Albuquerque, NM 87131-0001, USA.

ISSN 2380-4580

Managing Editor, Joseph Cook

Subject Editor, Emily Jones