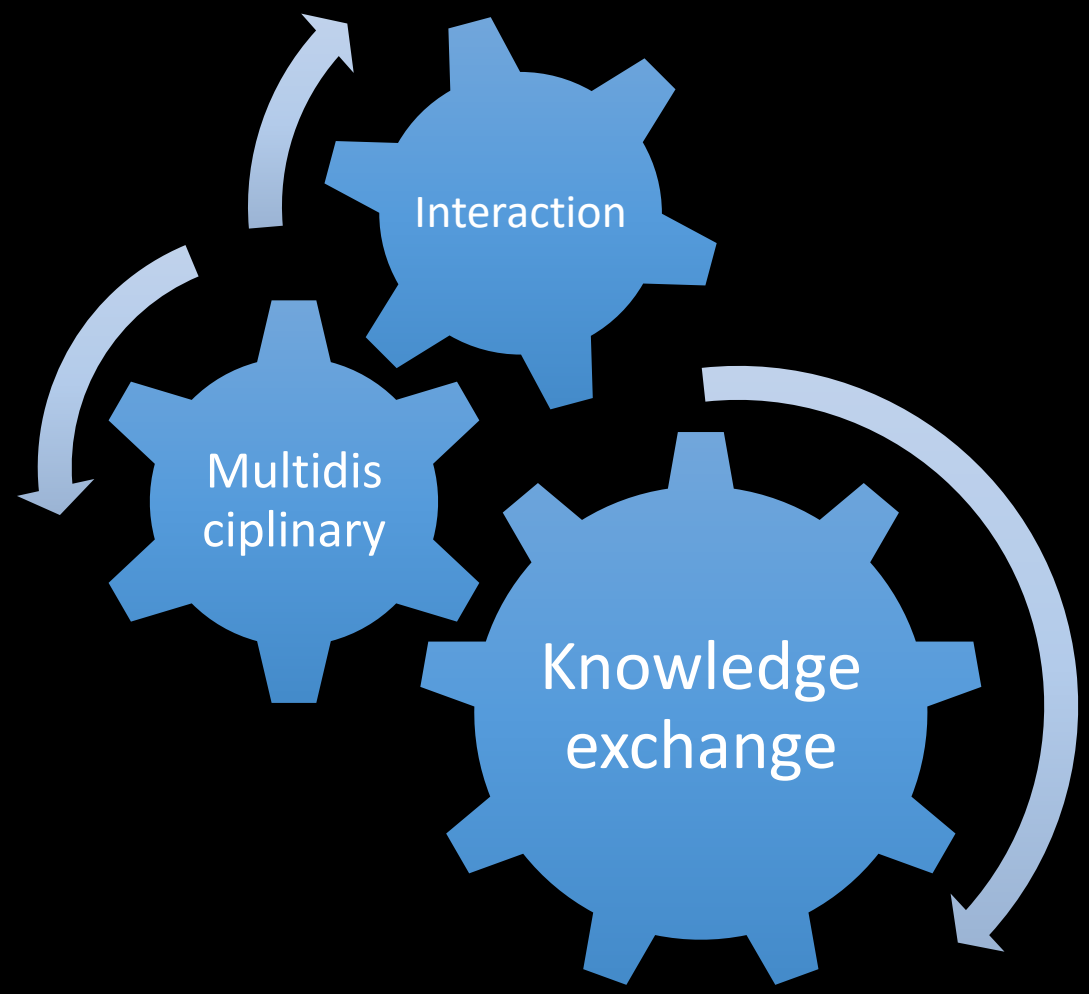


# S-ClimWaRe

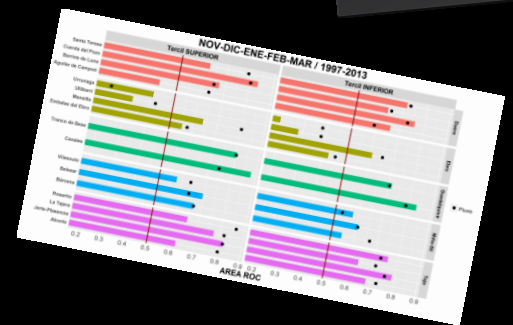
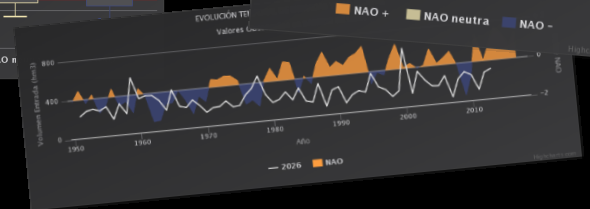
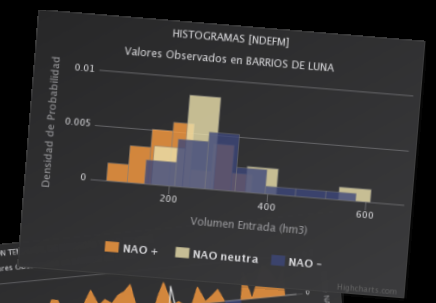
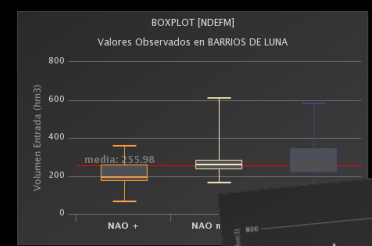
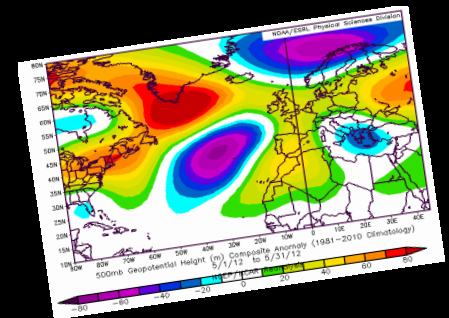
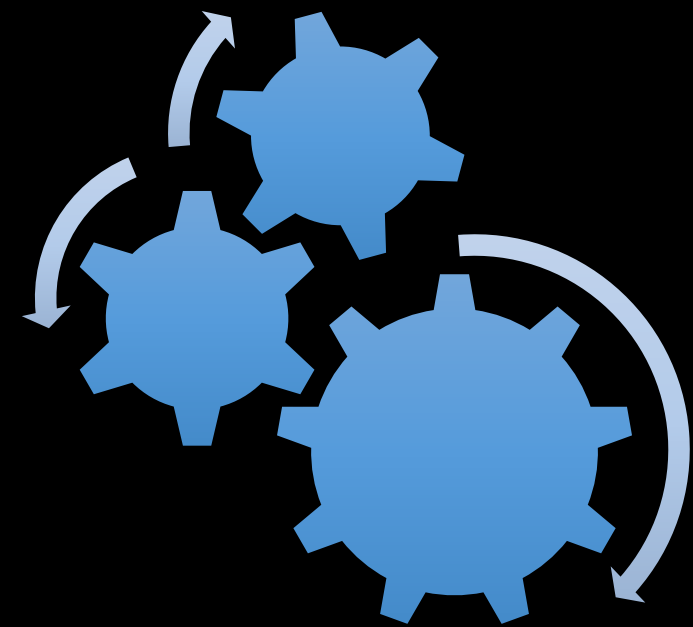
# Water Decision Making Toolbox

- S-ClimWaRe: Introduction
- Water Decision Making Toolbox

# S-ClimWaRe: Seasonal Climate Predictions in Support of Water Reservoirs Management

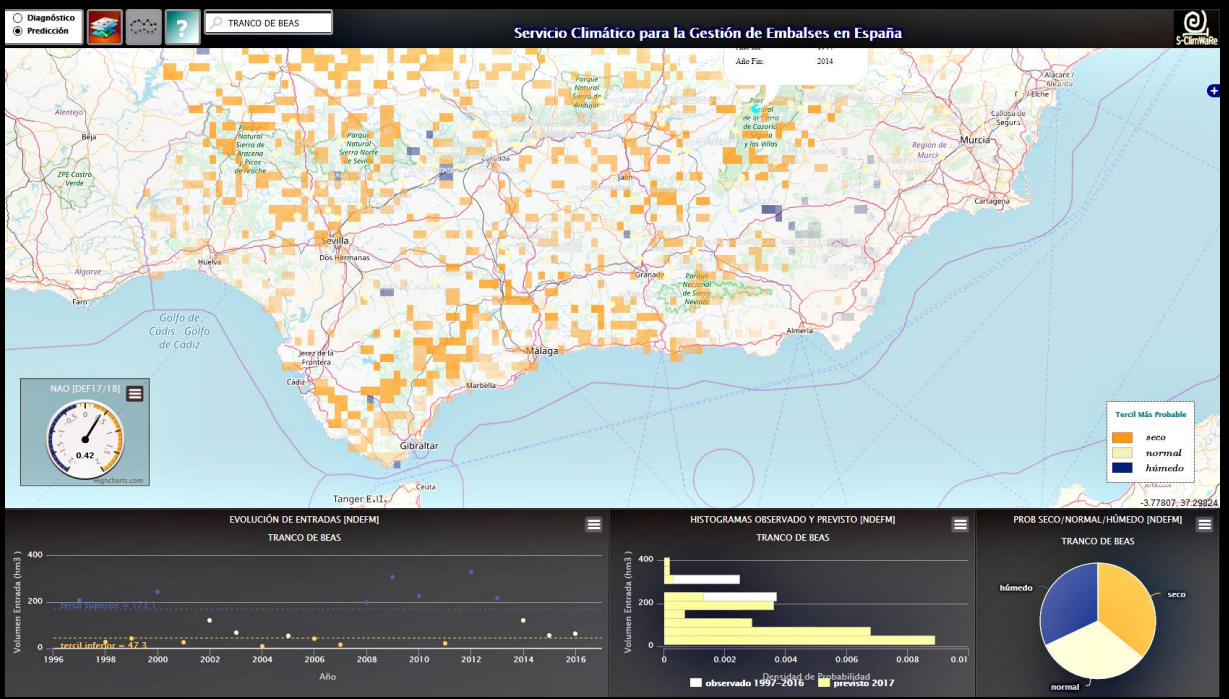
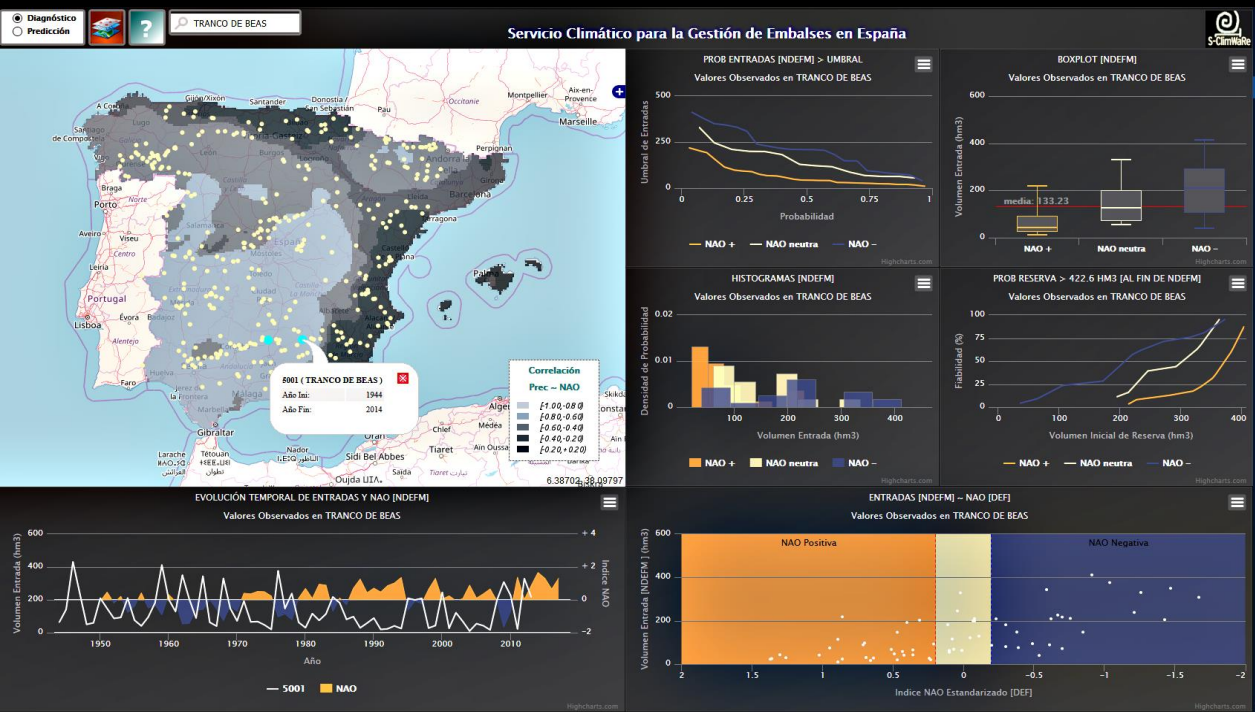


A collection of logos for partner organizations, including the Confederación Hidrográfica del Miño-Sil, the Agencia Estatal de Meteorología (AEMet), and the Confederación Hidrográfica del Tago, along with the logo of the Dirección General del Agua.

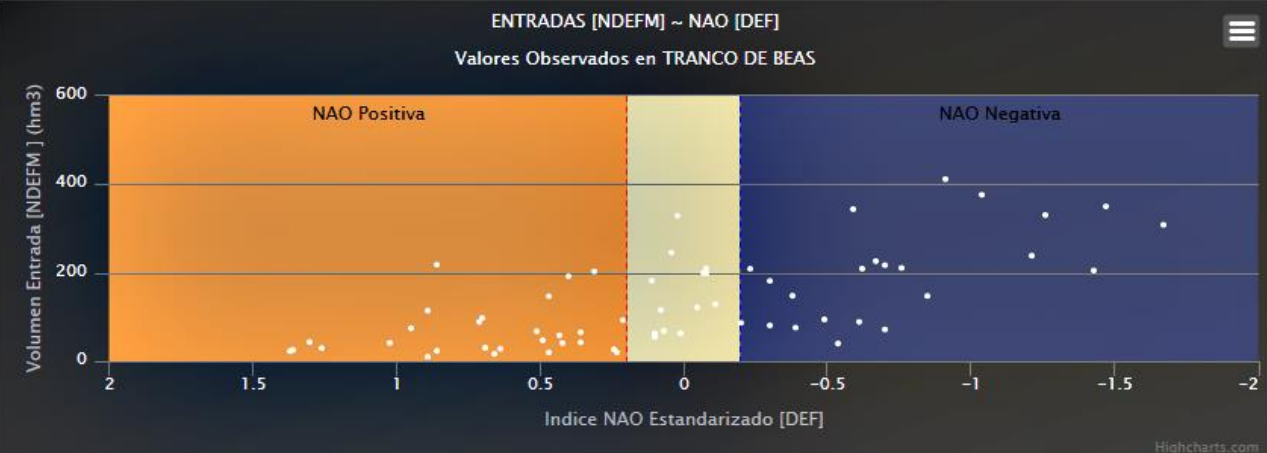
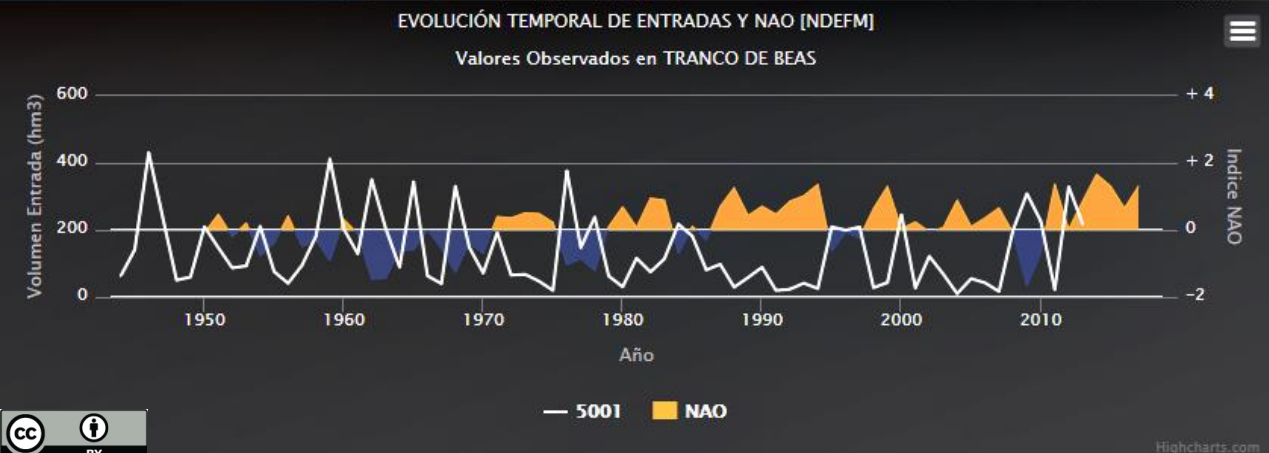
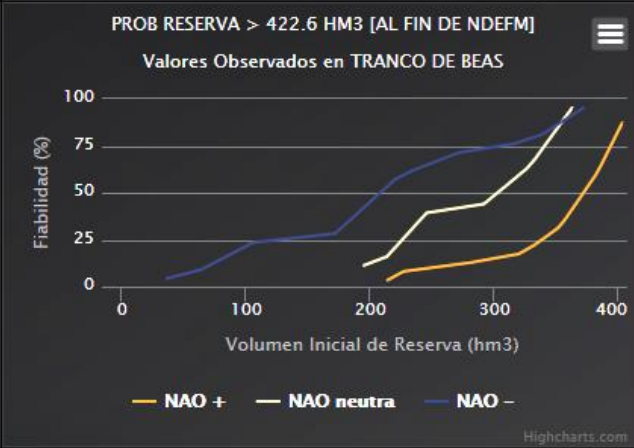
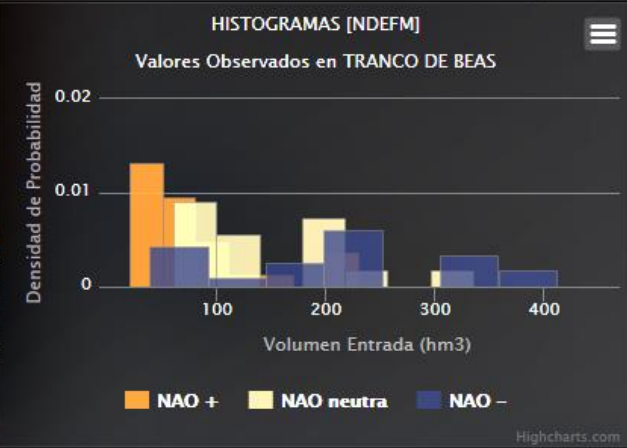
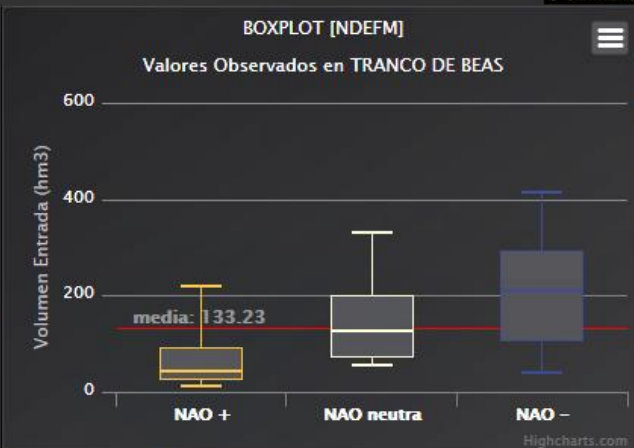
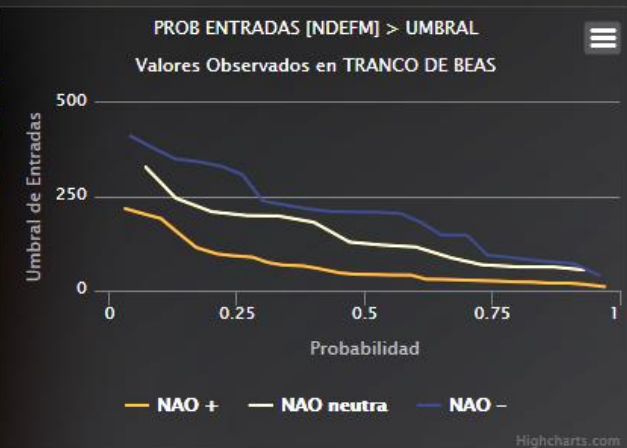
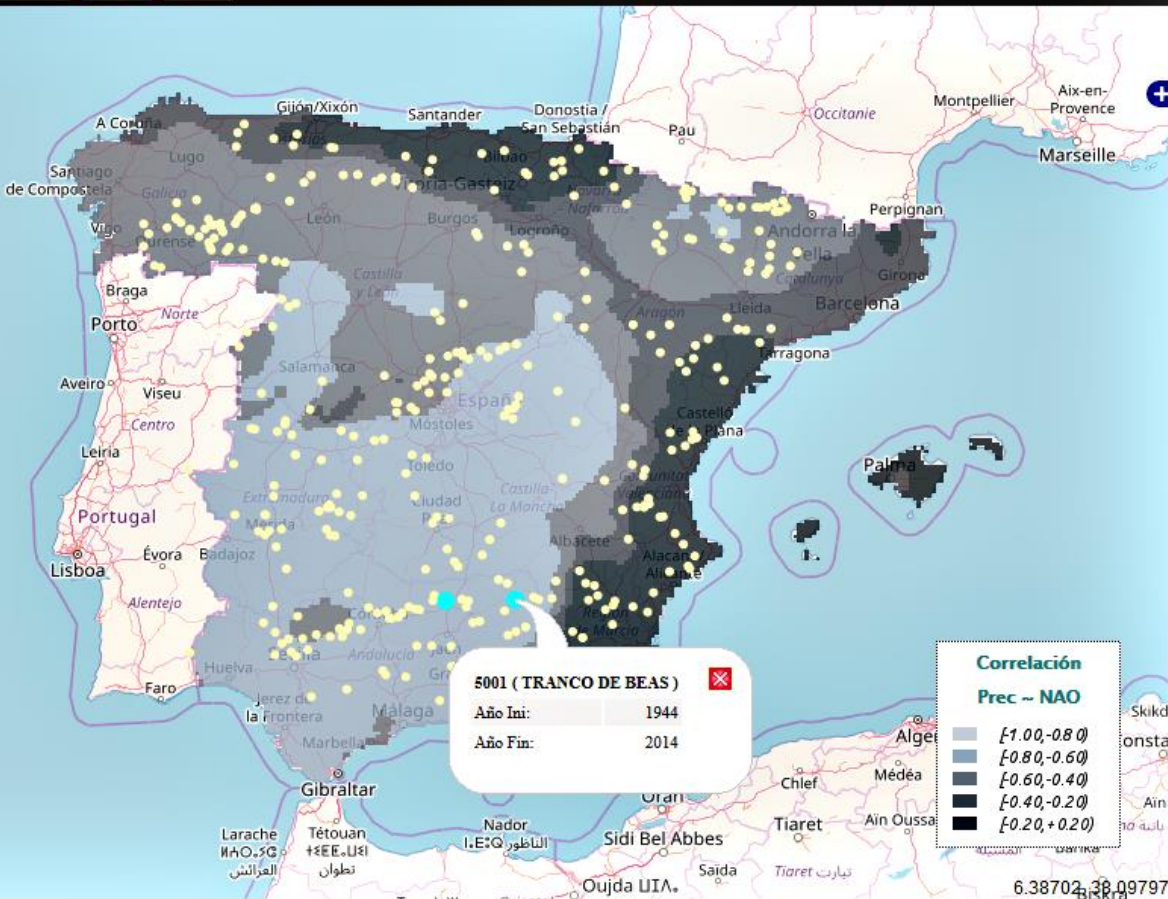




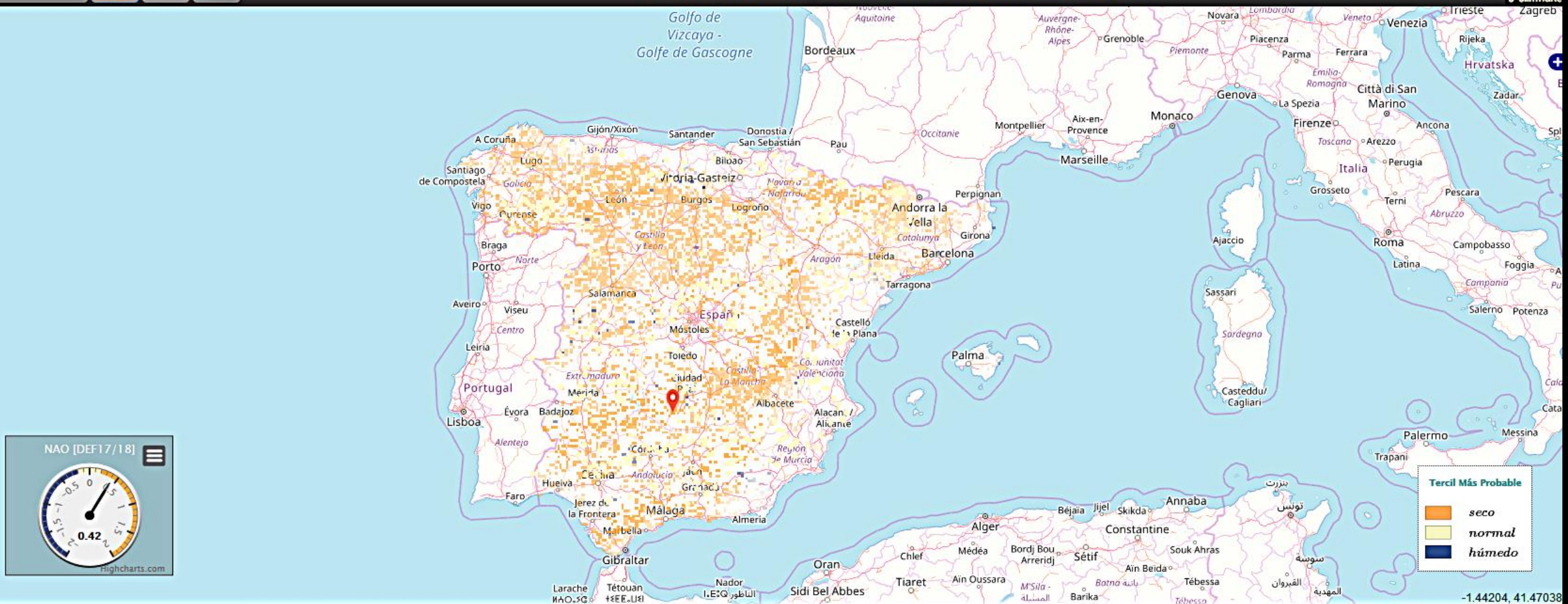
# Water Decision Making Toolbox











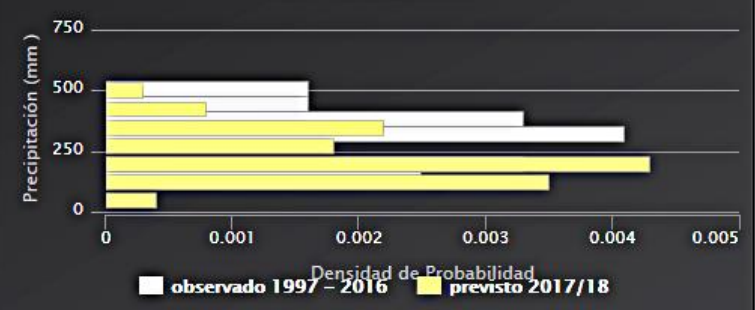
EVOLUCIÓN DE LA PRECIPITACIÓN [NDEFM]

Lon: -4.26, Lat: 38.68



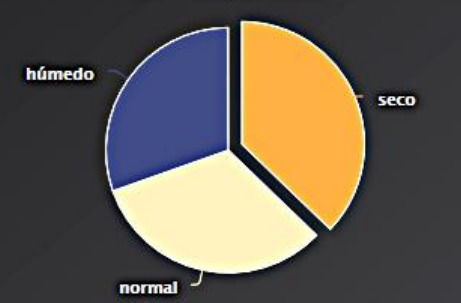
HISTOGRAMAS OBSERVADO Y PREVISTO [NDEFM]

Lon: -4.26, Lat: 38.68



PROB SECO/NORMAL/HÚMEDO [NDEFM]

Lon: -4.26, Lat: 38.68



## Related documents

- Voces. J., et al., 2016. Sistema estadístico de predicción estacional para la gestión de los embalses en España (Statistical seasonal forecasting system for the management of reservoirs in Spain). Nota Técnica nº 21 AEMET. [http://www.aemet.es/es/conocer/mas/recursos\\_en\\_linea/publicaciones\\_y\\_estudios/publicaciones/detalles/NT\\_21\\_AEMET](http://www.aemet.es/es/conocer/mas/recursos_en_linea/publicaciones_y_estudios/publicaciones/detalles/NT_21_AEMET)