

City University of New York (CUNY)

CUNY Academic Works

Open Educational Resources

Medgar Evers College

2020

Brave New World - Resilience

Rhonda S. Binda

CUNY Medgar Evers College

[How does access to this work benefit you? Let us know!](#)

More information about this work at: https://academicworks.cuny.edu/me_oers/10

Discover additional works at: <https://academicworks.cuny.edu>

This work is made publicly available by the City University of New York (CUNY).

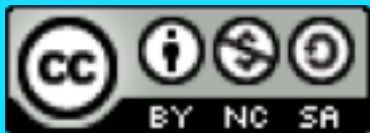
Contact: AcademicWorks@cuny.edu

BRAVE NEW WORLD: RESILIENCE

BY RHONDA BINDA, ESQ.

This OER material was produced as a result of the PIT-UN network Challenge Grant – New America

Creative Commons License



This work is licensed under a [Creative Commons Attribution-Noncommercial-Share Alike 4.0 License](https://creativecommons.org/licenses/by-nc-sa/4.0/)



THREE PILLARS FOR A SMART AND CONNECTED CITY OR COMMUNITY

100% CONNECTED

100% MOBILE

100% RESILIENT

GROWING THREATS TO CITIES

- Urbanization trends globally persist as more people seek work and educational opportunities in city centers
- Extreme weather events have exponentially increased due to climate change
- Security both psychical and virtual continue to be a challenge



NASA

resilience:

“[t]he capacity of a dynamic system to adapt successfully to challenges that threaten the function, survival, or future development of the system.”

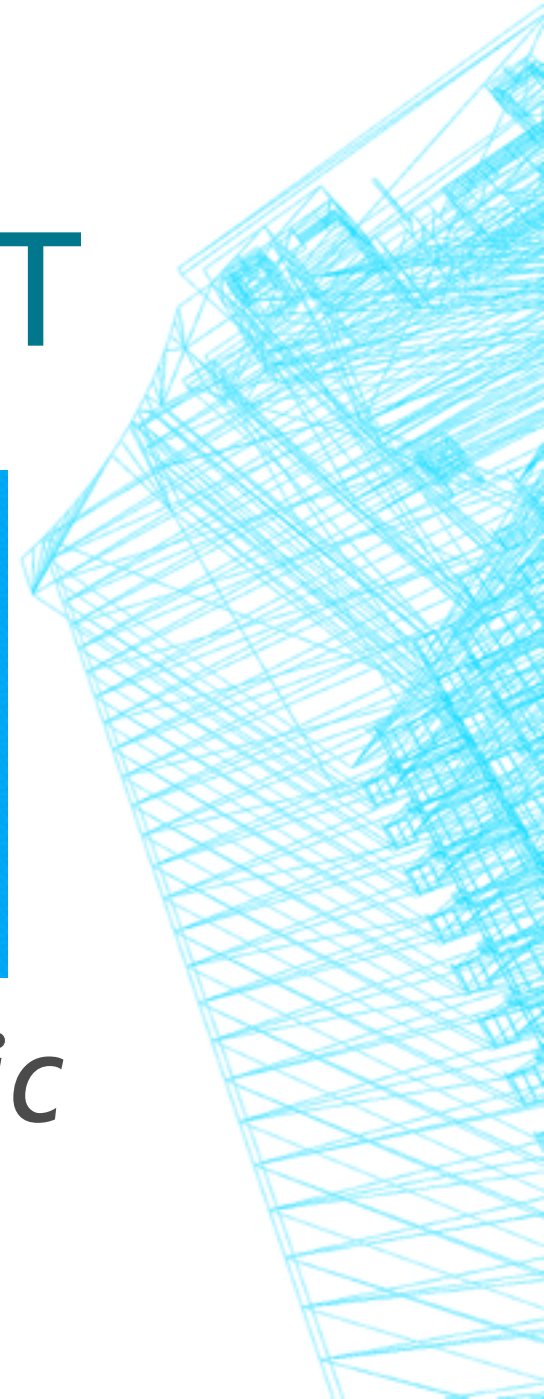
—**Ann Masten**, Professor, University of Minnesota
College of Education and Human Development

CMR INDEX: 100% RESILIENT

- *Secure*
- *Safe*
- *Sustainable*

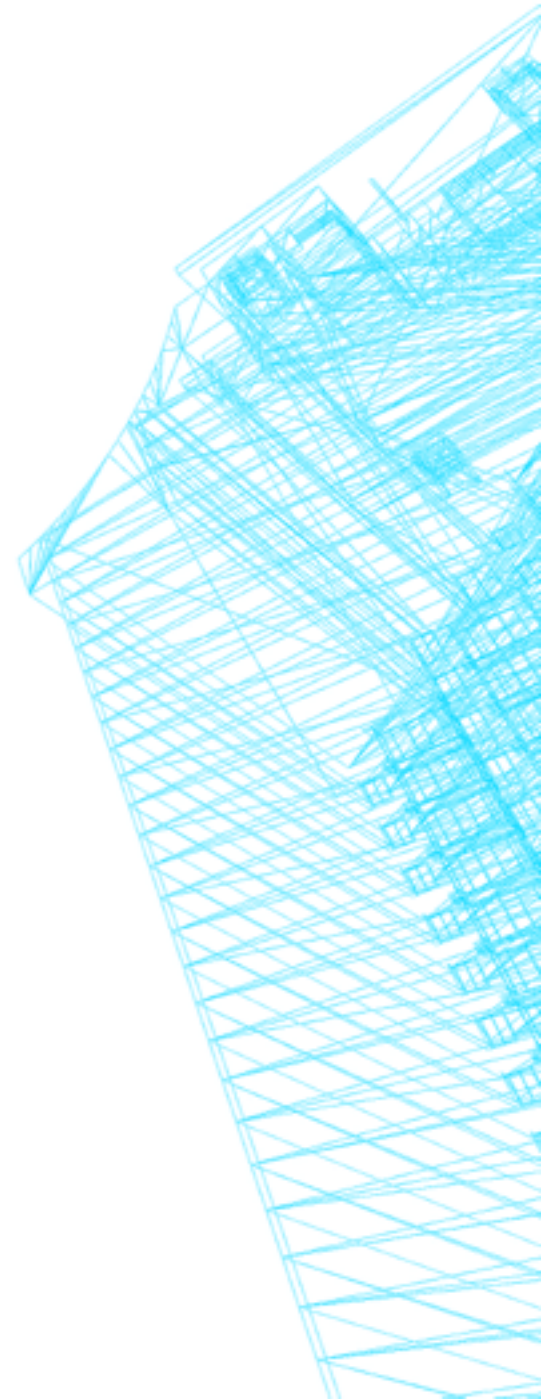


Social, Environmental & Economic



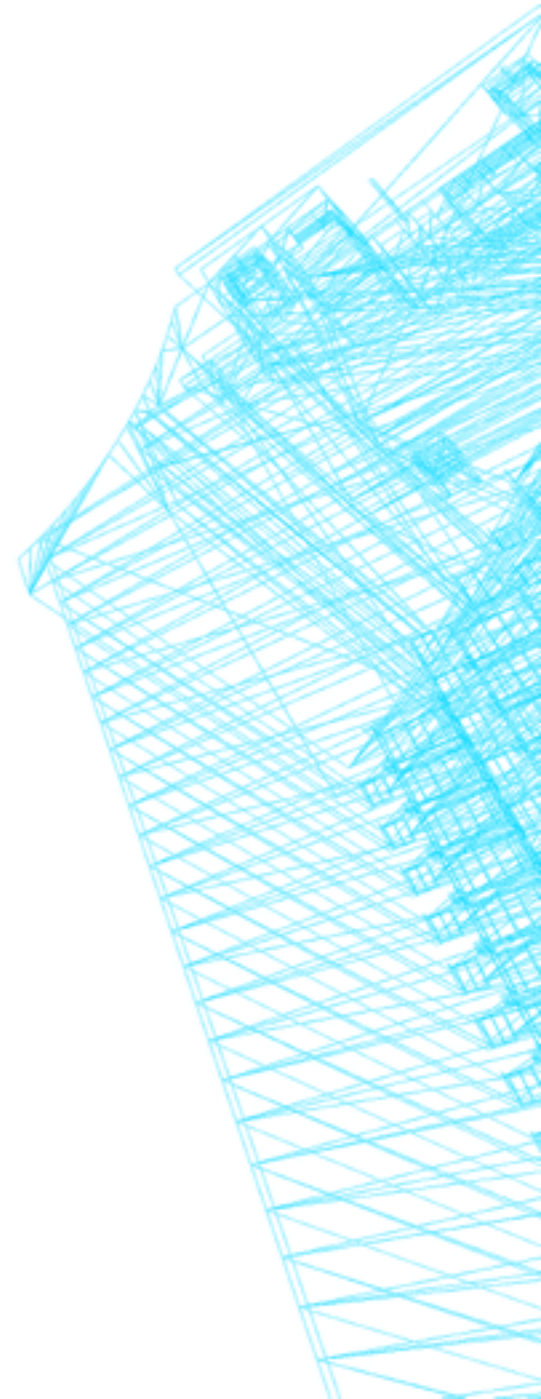
SECURE

- From the inception of any smart city plan, and any utilization of technology, a comprehensive cybersecurity network must be in place.
- In order to handle the onslaught of IoT there is a duty, especially since dealing with large volumes of the public's data.

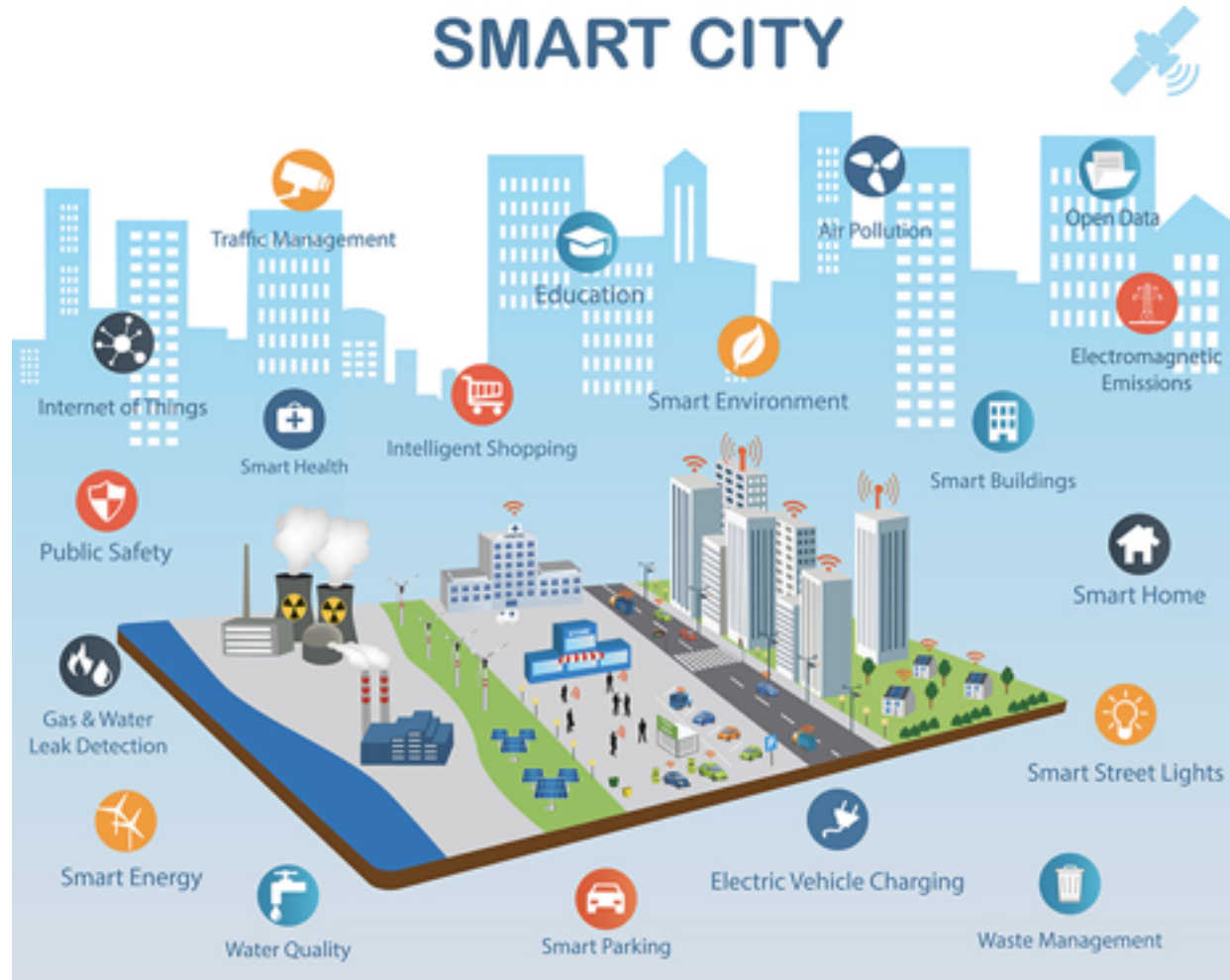


SECURE

- Cities must see to continuously improve, update and enhance their cybersecurity frameworks.
- The risk posed to cities has exponentially increased and more often are cities being held ransom by hackers and subject to cybercrimes.



SAFE



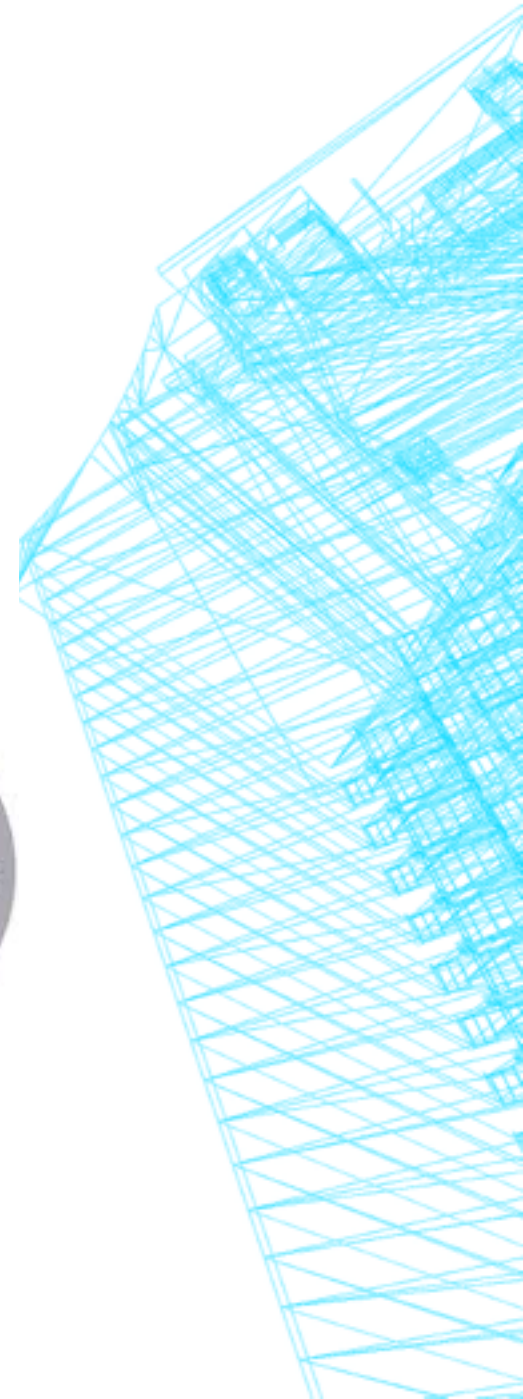
Public Safety is paramount. With sensors detecting danger there are now ‘more eyes on the street.’

<https://www.google.com/url?sa=i&url=https%3A%2F%2Fwww.geospatialworld.net%2Fnews%2Fsmart-city-and-public-safety-to-take-center-stage>

SUSTAINABLE

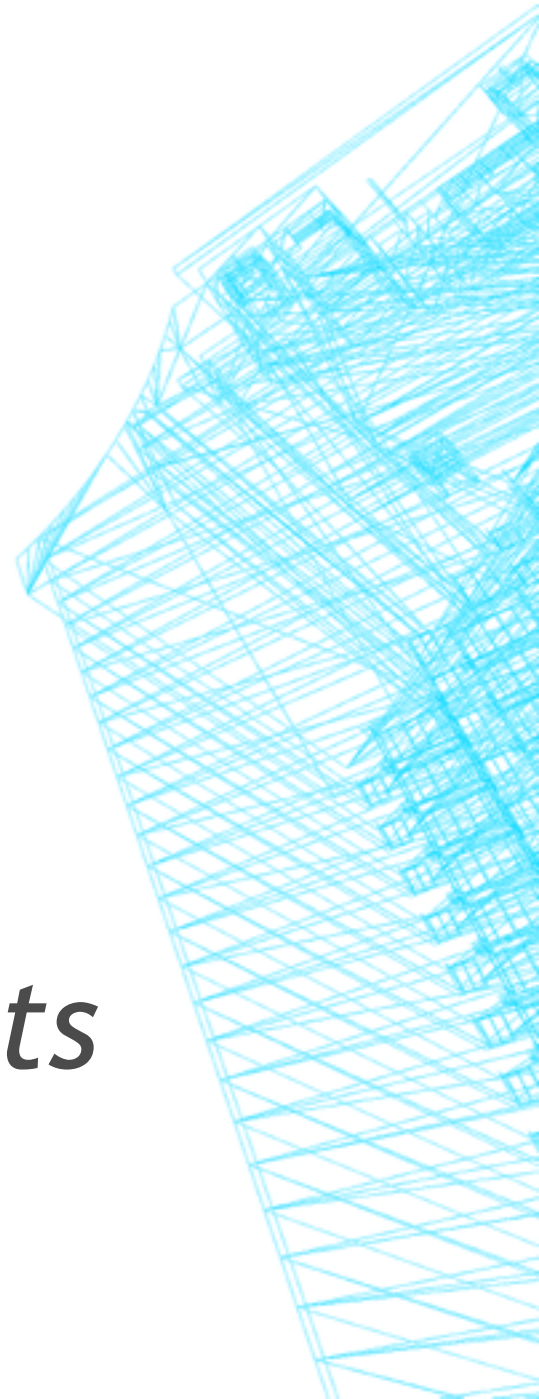
“SEE” VALUE

- *Social*
- *Environmental*
- *Economic*



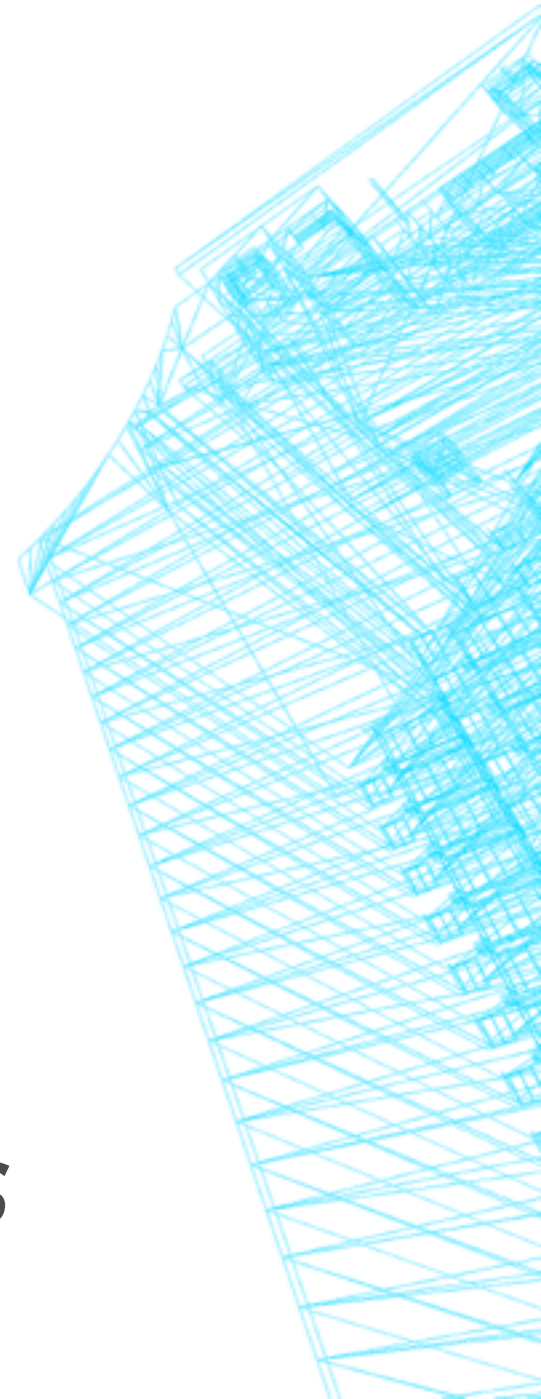
SOCIAL SUSTAINABILITY

- *Socially Livable City*
- *Equitable City*
- *Sustains the culture and history*
- *This approach retains and attracts residents*



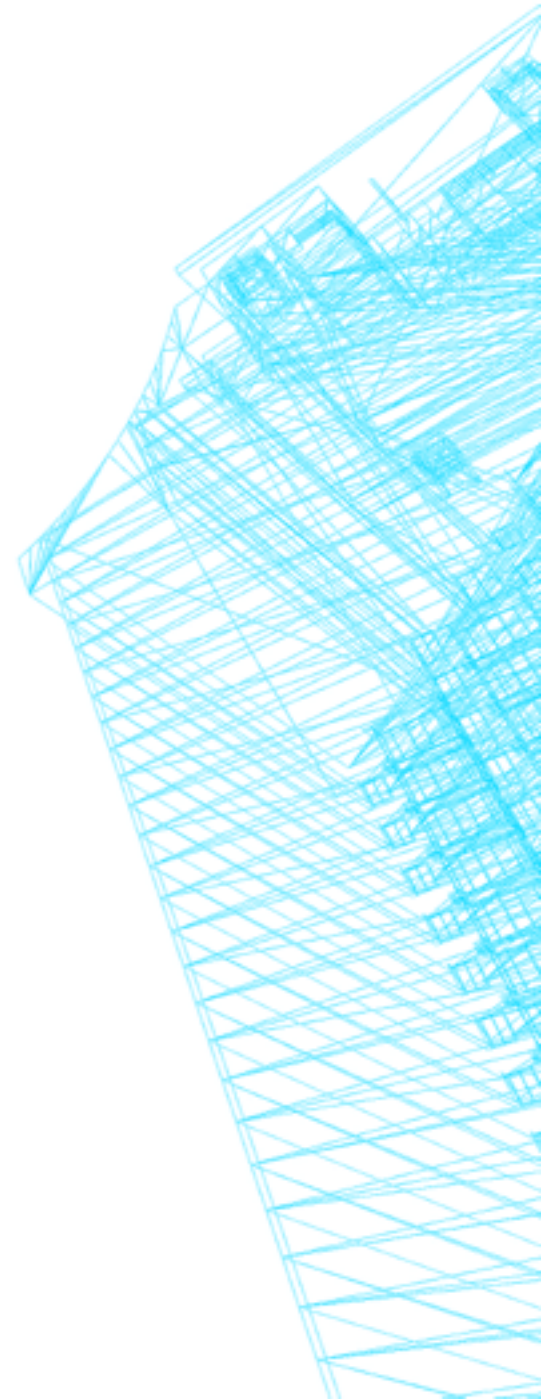
ENVIRONMENTAL SUSTAINABILITY

- *Ecologically Livable City*
- *Viabile City in harmony with nature and animals*
- *Utilizing clean technologies*
- *Plenty of green spaces and parks*



ECONOMIC SUSTAINABILITY

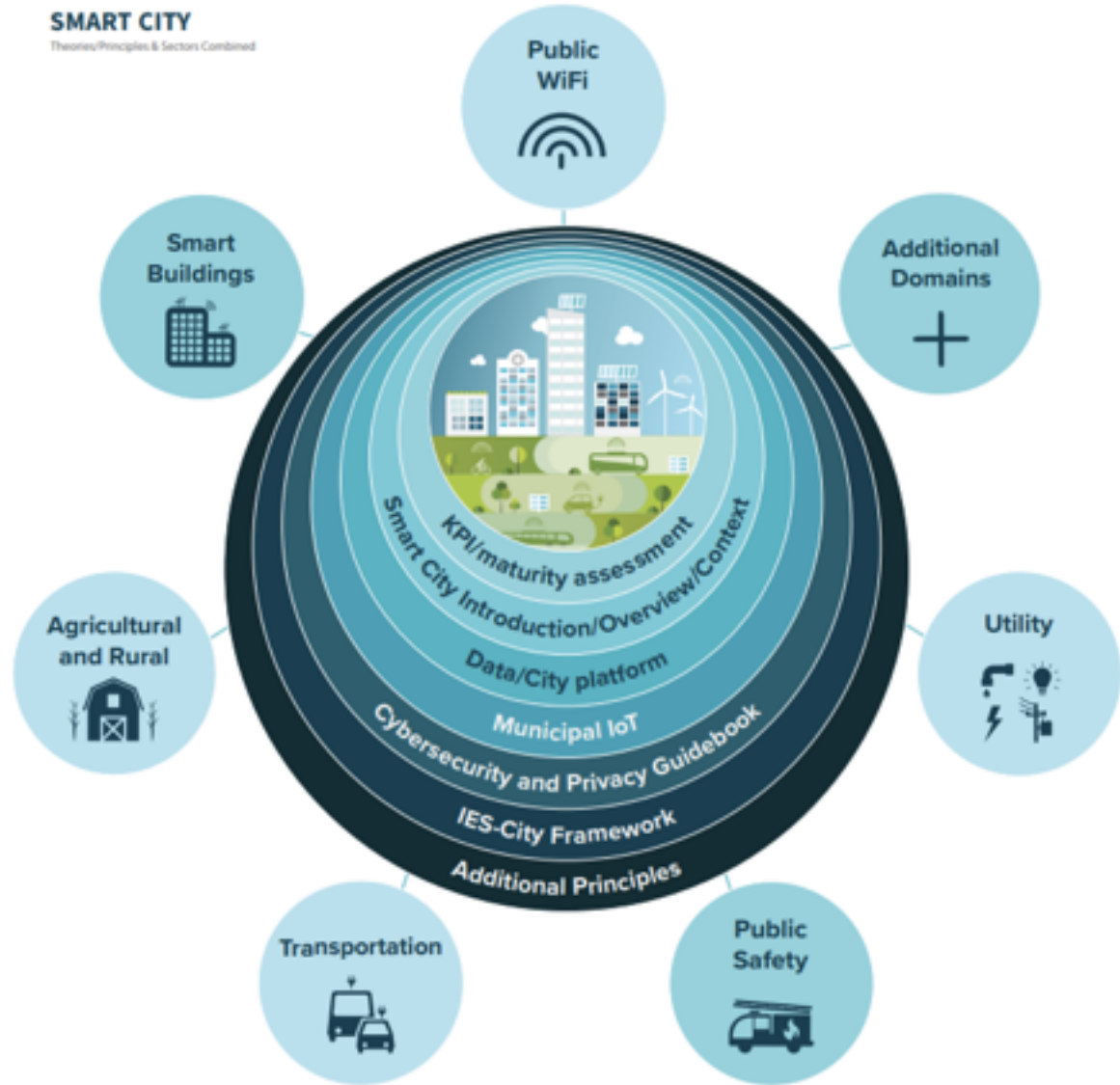
- *Cities' main revenue sources are from resident and business taxes. In order to be viable smart city technology and planning should strategically and directly serve the needs of business community and residents first.*
- *Smart cities support the Innovation 2.0 model.*
- *Furthermore, they train their population to be the workforce needed for the future to retain and attract commerce.*



NIST SMART CITY FRAMEWORK

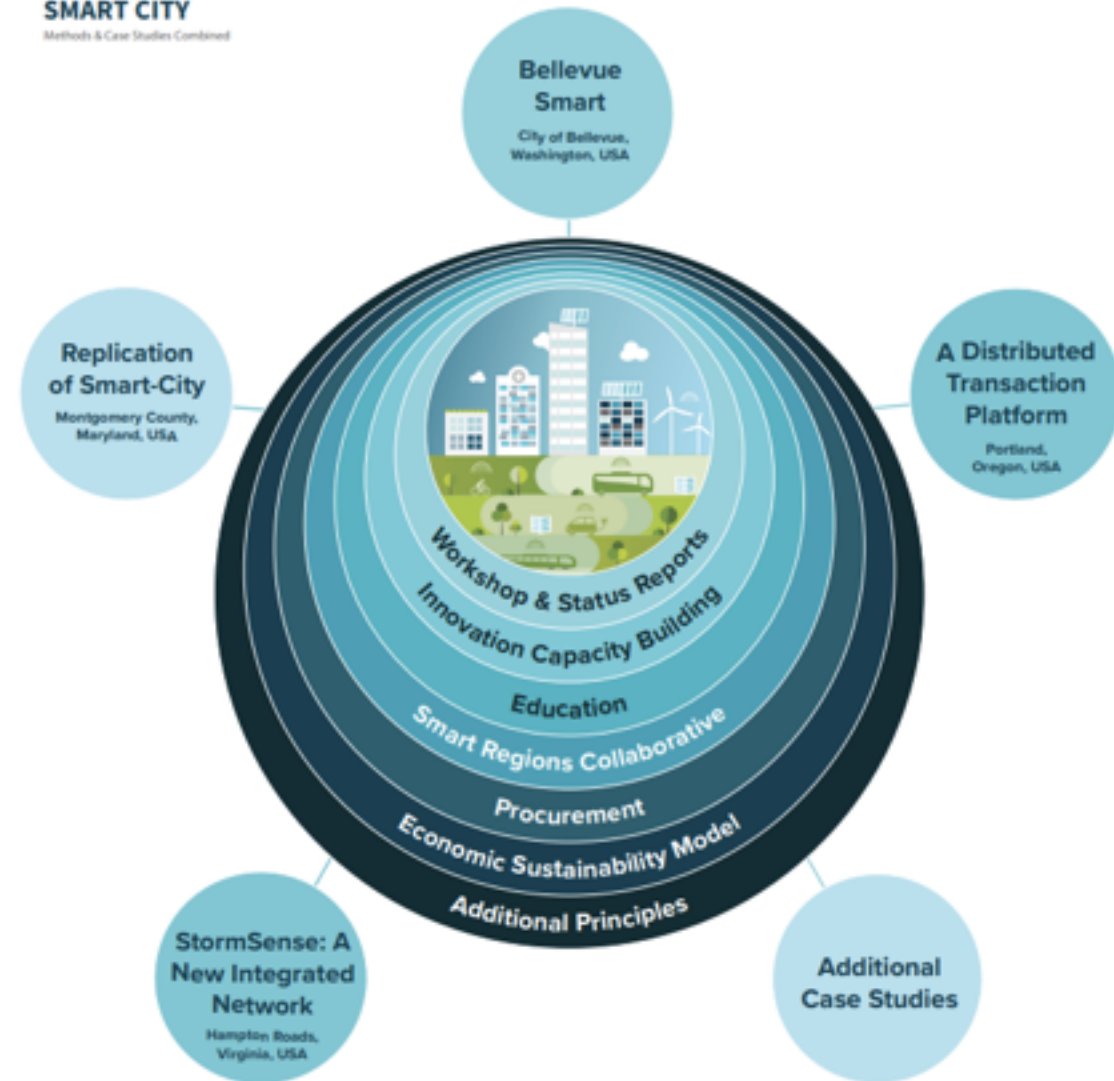
SMART CITY

Theories/Principles & Sectors Combined



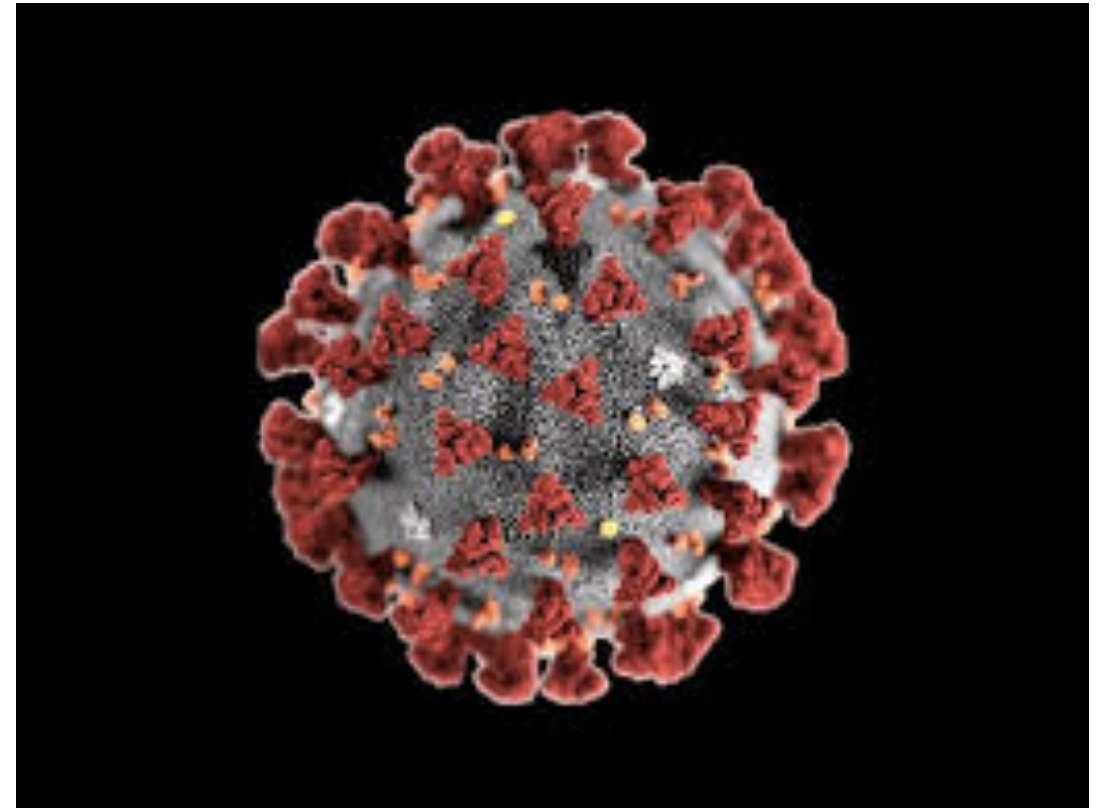
SMART CITY

Methods & Case Studies Combined



GLOBAL TREND: COVID 19 PANDEMIC

The pandemic caused an unprecedented multi-hazard problem for our cities unlike that of a terror attack or weather event. Which systems were deemed critical or essential during this time and how effective was the real-time connectivity between and among them?



**THE BEST WAY TO PREDICT THE FUTURE IS TO
DESIGN IT YOURSELF!**

THANK YOU!

@rhondabinda

LinkedIn, FB, IG, Twitter