

Spatio-temporal analysis through remote sensing and GIS in Moscow region, Russia

K. Choudhary^a, M.S. Boori^{a,b,d}, A.V. Kupriyanov^{a,c}

^a Samara National Research University, 443086, 34 Moskovskoye Shosse, Samara, Russia

^b American Sentinel University, 2260 South Xanadu Way, Suite 310, Aurora, Colorado 80014, USA

^c Image Processing Systems Institute of the RAS - branch of the Federal Scientific Research Centre "Crystallography and Photonics" of Russian Academy of Sciences, 443001, 151 Molodogvardejskaya street, Samara, Russia

^d Bonn University, Meckenheimer Allee 166, D-53115 Bonn, Germany

Abstract

Spatio-temporal analysis is a process for city development with growing population and economy for better implementation of planning policies with advance technology. In this research work, three dates (1995, 2005 & 2016) satellite images were used to mapping and monitoring of Moscow region, Russia. This study focuses on the further classification of the study area into different categories on the basis of use and association by implementing a rule-based classification system on remotely sensed data. This research provides useful and up-to-date information to local land use planners, managers and policy-makers to step up towards sustainable development in Moscow region, Russia.

Keywords: Spatio-temporal; land use/cover; remote sensing; GIS;

1. Introduction

Planning is a widely established approach for managing resource and decision making. It includes the use of collective intelligence and knowledge of future requirements and need to improve environment in which people work and spend their leave time [1]. Hence studying the spatial and temporal LULC changes might provide a prominent basis for more effective land use planning that would keep the ecosystem in balance. At this time research on urban growth has become a very important factor for the interpretation of global environmental changes it has effects on the local environment and the economy growth can be defined as the spread of new developments in urban areas to the surrounding land [2]. Urban growth is responsive for the disorganized use of land resources and energy intrusion into agricultural land. Unplanned urban growth has been responsible for many problems such as poor quality of life, polluted drinking water noise pollution, air pollution etc. The combination of spatial data and analytical methods will provide support to city planners, ecologists and resource managers in their planning and decision making [3-4]. Dynamic spatial urban models provide an enhanced capability for evaluating future development and generating planning.

The technology of remote sensing and GIS includes both aerial and satellite based examination with high resolution and high temporal frequency [5-6]. In this research an attempt has been made to diction the spatio-temporal urban growth dynamics of the Moscow region. To achieve this Landsat satellite data from 1995, 2005 and 2016 for the month of February were analyzed for land use mapping. The urban expansion of Moscow over all 15 years period 1995-2016 was mapped using remote sensing and GIS images.

2. Study area

Moscow region is the one of the most densely populated regions in the country and is the second most populated federal region. The Oblast has no official administrative center, it is public authorities are located in Moscow and across other locations in the oblast. As of the 2010 Census, its population was 7,095,120 and 7,231,068 recorded in the 2015 Census. The latitude of the city is 55° 45' 7" N and longitude is 37° 36' 56" E. The region is highly industrialized, such as metallurgy, oil refining, mechanical engineering, food, energy and chemical industries [7].

The climate of Moscow region is humid continental, short but warm summers and long cold winters. The average temperature is 3.5 °C (38.3 °F) to 5.5 °C (41.9 °F). The coldest months are January and February average temperature of -9 °C (16 °F) in the west and -12 °C (10 °F) in the east. The minimum temperature is -54 °C (-65 °F). Here are more than three hundred rivers in Moscow region. The first largest river is Volga, most river belong to the basin of the Volga. Which itself only crosses a small part in the north of Moscow Oblast. They are mostly fed by melting snow and the flood falls on April-May. The water level is low in summer and increases only with heavy rain. The river freezes over from late November until April.

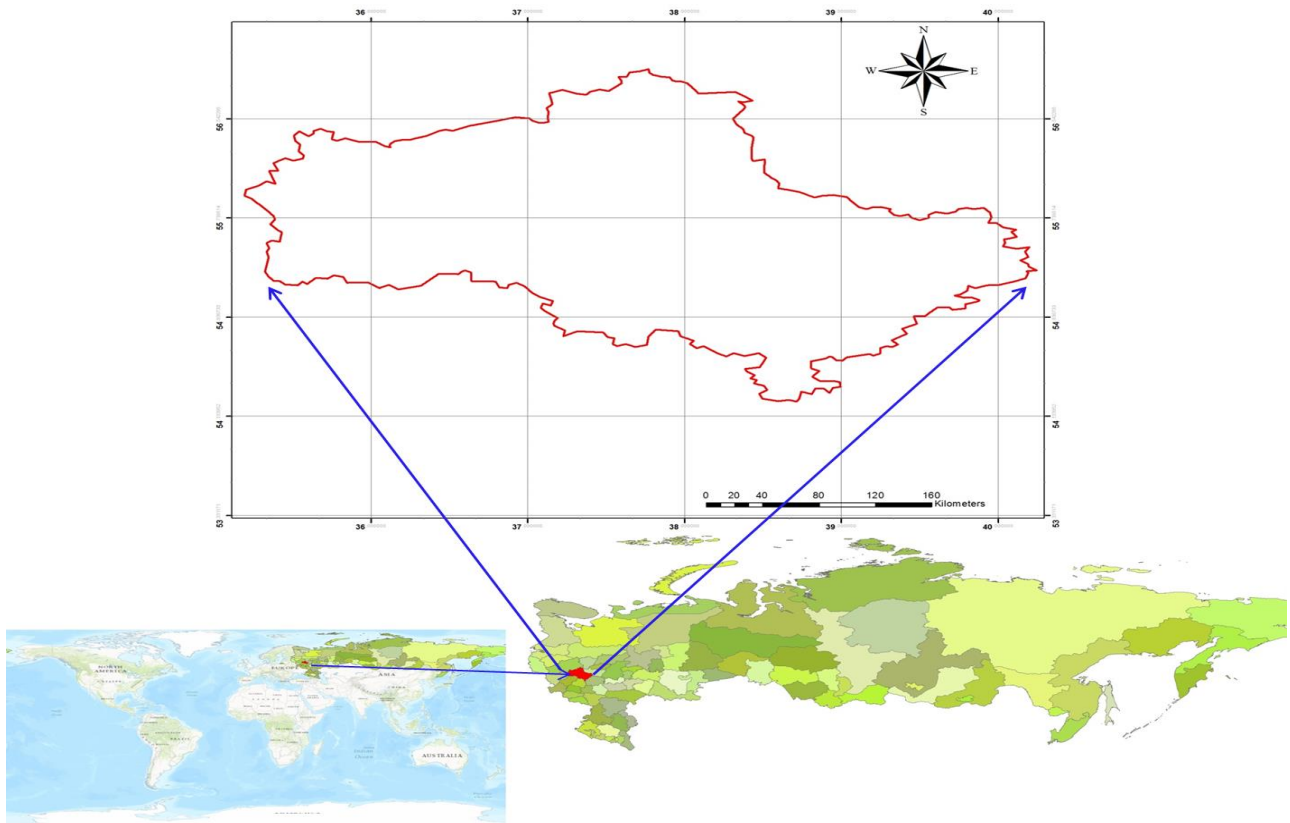


Fig. 1. Location map of the study area in Moscow Region, Russia.

3. Material and methods

The Landsat program is a series of Earth-observing satellite mission jointly managed by NASA and the U.S. geological survey [8]. The first Landsat satellite was launched in 1972 and the most recent one Landsat 8 was launched on February 11, 2013. Data from Landsat 8 has eight spectral bands with spatial resolutions ranging from 15 to 60 m. The Landsat satellite data of 1995, 2005 and 2016 have been used in this study with a spatial resolution of 30 m. The satellite data were checked completely before classification into land use groups [9-10]. Spectral charts were prepared to distinguish and find out the difference in pixel values of different land use/cover classes in different bands. Primary land use classes were defined, such as agriculture, barren land, forest, settlements, scrubland, water body and wetland. The land use classes are defined in Table 1.

3.1. Land use/cover change detection and analysis

Land use maps shows in figures 2, were prepared using Landsat data. The accuracy of these classified maps was checked using the GIS tools. The accuracy for these periods is 90% respectively. There is a big change in land use during this time period. To order increase the accuracy of the land use mapping of the two images, ancillary data, and the result of visual interpretation was integrated with the classification results using Arc GIS [11]. The aim of this was to improve the classification accuracy of the classified image.

Table 1. Land use classes definitions

LULC Classes	Definition of Land Use Classes
Agricultural	Cultivated areas, crop lands, grass lands, vegetables, fruits etc.
Barren land	This contains open lands mostly barren but also small vegetation.
Forest	Small trees and shrub vegetation area except for vegetation.
Scrubland	Scrub is a plant community describe by vegetation shrubs, often also including grasses and herbs.
Settlements	Includes construction activities along the coastal dunes as well as sporadic houses within the local village and some governmental buildings.
Water body	All the water within land mainly river, ponds, lakes etc.
Wetland	A wetland is a land area with standing water and low soil fertility.

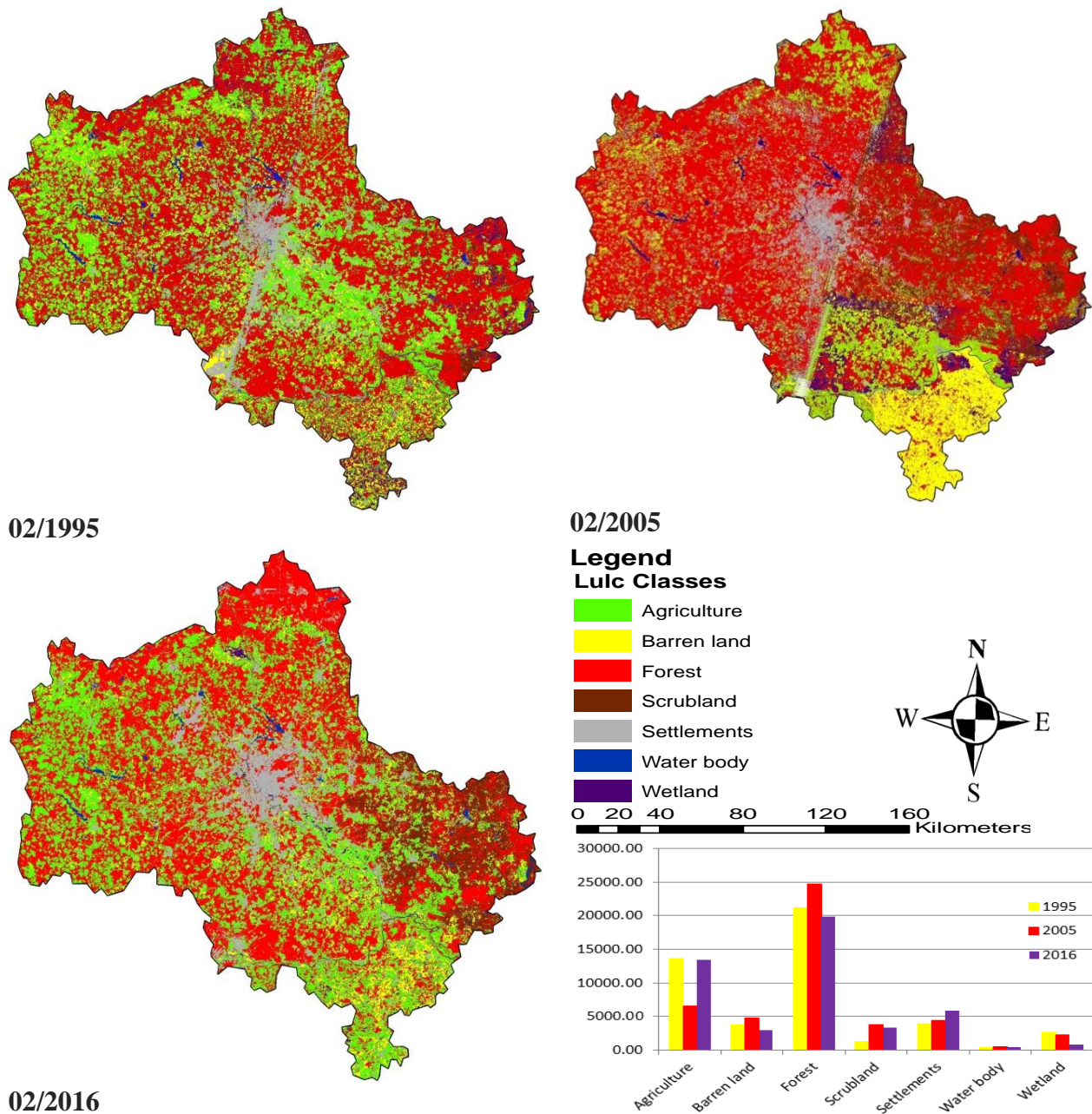


Fig. 2. Land use of Moscow Region, Russia; (a) in 1995, (b) in 2005 and (c) in 2016.

4. Results and Discussion

Figure 2 shows land use image after supervised classification. These images provide pattern of land use/cover of the study area. The green color represent agricultural, yellow color barren land, red color forest, gray color settlements, brown color shows the scrubland, blue color shows water body and purple color shows wetlands. All land cover class maps were compared with reference data. Over all classification accuracy of the study area was more than 90% all three dates.

There is a big change in land use during this time period, as show in the graphical representation of the data in figure 2. All the urban categories increased continuously, with the urban area increasing by 1953.69 km² (4.17%) since 1995. Results show that forest area has been most dominant class in the study area for all three dates. The land use transition during the 1995-2016 periods is shows in table 2.

Table 2 shows both positive and negative land use/cover changes in the study area from 1995 to 2005, the major change was in agriculture and forest area. Forest was increase 3,536.13 km² (7.56) and agriculture was decrease 7169.51 km² (15.33%) of the total study area due to hares climatic conditions. From 2005 to 2016 total agriculture area was increase from 6,899.62 km². In the same time period other classes such as barren land, scrubland, settlements, water body and wetland increase respectively. From 2005 to 2016 total agricultural area was increase from 6,899.62 km² and other classes settlements and waterbody were increased.

Table 2. Area and amount of change in different land use categories in the study area during 1995 to 2016

Class	1995		2005		2016	
	Area KmSq	%	Area KmSq	%	Area KmSq	%
Agriculture	13673.51	29.24	6504.00	13.91	13403.62	28.66
Barren land	3802.63	8.13	4717.74	10.09	2993.18	6.40
Forest	21135.18	45.19	24671.31	52.75	19896.64	42.54
Scrubland	1268.97	2.71	3791.82	8.11	3377.49	7.22
Settlements	3898.31	8.34	4361.75	9.33	5852.00	12.51
Water body	408.96	0.87	430.13	0.92	449.45	0.96
Wet land	2580.57	5.52	2291.37	4.90	795.75	1.70
Total	46768.12	100.00	46768.12	100.00	46768.12	100.00

Table 3. Land use change showing land encroachment of the study area

1995-2005	CLASS	AGRICULT	BARREN L	FOREST	SCRUBLAN	SETTLEME	WATER B	WETLAND	Total
	Agriculture	3820.91	2119.36	4633.85	1396.83	1318.99	1529	303.14	13808.57
	Barren land	867.28	1091.05	910.37	215.43	522.59	1.39	127.87	3735.99
	Forest	990.98	583.75	15982.20	1517.75	605.99	44.48	1384.32	21109.46
	Scrubland	198.75	244.62	365.54	205.70	82.00	20.85	125.09	1242.55
	Settlements	458.66	276.39	1178.62	198.75	1599.75	13.90	151.30	3877.76
	Water body	8.34	4.17	41.70	22.24	40.31	293.26	2.78	412.79
	Wet land	150.11	418.35	1662.29	137.60	122.31	2.78	67.56	2581.00
	Total	6495.04	4738.09	24774.56	3694.29	4291.94	391.95	2382.25	46768.12
2005-2016	CLASS	AGRICULT	BARREN L	FOREST	SCRUBLAN	SETTLEME	WATER B	WETLAND	Total
	Agriculture	3926.40	622.67	1067.43	137.60	717.18	1.39	40.31	6512.97
	Barren land	2711.65	964.57	414.18	27.80	528.15	2.78	88.95	4738.09
	Forest	4401.14	480.16	15697.28	2135.70	1798.50	41.70	69.49	24643.96
	Scrubland	1129.97	300.88	906.20	915.93	300.21	38.92	29.19	3821.29
	Settlements	1099.39	291.30	451.71	48.09	2354.45	27.53	45.87	4313.33
	Water body	59.75	0.00	16.88	11.12	36.14	326.62	0.00	450.30
	Wet land	230.88	116.75	1238.38	193.19	230.72	121.3	276.12	2288.17
	Total	13549.18	2976.32	19791.85	3484.42	3965.35	451.06	549.92	46768.12

The results show that from 1995 to 2005, 3820.91 km² agriculture areas was stable but 990.98 km² areas converted from forest to agriculture (table 3). In the same time period 15982.20 km² forest areas was stable but 1662.39 km² wetland area was encroached by forest. Maximum stable class was water body, where 293.26 km² areas were stable from 1995 to 2005. In second half from 2005 to 2016 3926.40 km² agriculture area was stable and 2711.65 km² barren land, 4401.14 km² forest and 1129.97 km² scrubland area converted into agriculture land due to increase of market demand. In this time period there is a not a big change in wetland and maximum bare land area 276.12 km² was stable. Scrubland 906.20 km² and wetland 1238.38 km² area was converted into forest area which shows governmental protection from 2005 to 2016. Since 2005 to 2016, 2354.45 km² settlements area was stable but 1798.50 km² forest area was converted into settlements. In the second half again water body area was highly stable area around 326.62 km².

5. Conclusion

In this new period of globalization cities should have quality infrastructure, energy and environment condition to sustain growth and attract foreign investment. The planning authorities should adopt new technologies such as remote sensing and GIS to address these issues. Remote Sensing and GIS are adequate of providing the necessary information and intelligence for planning proposal. In this research remote sensing and GIS have been unified to exhibit the changes in urban development and its future growth trends. This study focus on discover the expansion of the urban area of Moscow region. A large percentage of barren land was transformed into urban area during the study period. The urban growth shows maximum detail on the outskirts of the region. This expansion also indicates of industrial growths. Only remote sensing data can provide complete spatial information for the efficient assignment of urban growth in developing countries over the time period.

Acknowledgements

This data work is financially supported by the Russian Scientific Foundation (RSF), grant no. 14-31-00014 “Establishment of a Laboratory of Advanced Technology for Earth Remote Sensing”.

References

- [1] Baker, W.L. “A Review of Models of Landscape Change,” *Landscape Ecology* 2 (1989) 111–133
- [2] Bauer, T., Steinnocher, K. “Per Parcel Land Use Classification in Urban Areas Applying a Rule-Based Technique,” *GeoBIT/GIS* 6 (2001) 24–27
- [3] Boori, M.S., Choudhary, K., Kupriyanov, A. Vulnerability analysis on Hyderabad city, India. *Computer Optics*, 2016 - Vol. 40(5), pp. 752-758.
- [4] Alemayehu, M. Forage Production in Ethiopia: A case study with implications for livestock production. Ethiopian Society of Animal Production (ESAP), Addis Ababa, Ethiopia. 2002.
- [5] Allan, J. *Sensors, Platforms and Applications; Acquiring and Managing Remotely Sensed Data*. In: Steven, M. and J. Clark (eds.). *Application of Remote Sensing in Agriculture*. Butterworths, London. 1990.
- [6] Fang, S, Gertner, G.Z, Sun, Z, Anderson, AA. The impact of interactions in spatial simulation of the dynamics of urban sprawl. *Landscape and Urban Planning* 2005;73:294–306
- [7] Henriquez, C., Azocar, G., Romero, H. Monitoring and modeling the urban growth of two medium-sized Chilean cities. *Habitat International* 2006;30:945–964.
- [8] Asner, G. Contributions of multi-view angle remote sensing to land-surface and biogeochemical research, *Remote Sensing of Environment* 18: 137– 162. 2000.
- [9] Boori, M.S., Choudhary, K., Soifer, V.A., Sugimoto, A. Computer simulation of satellite data for urban expansion analysis. *International Journal of Mathematics and Computers in Simulation*, 2016 - Vol. 10(2016), pp. 142151.
- [10] Boori, M.S., Kuznetsov, A.V., Choudhary, K., Kupriyanov, A. Satellite image analysis to evaluate the urban growth and land use changes in the city of Samara from 1975 to 2015. *Computer Optics*. 2015 - Vol. 39(5), pp. 818-822.
- [11] Dewan, A.M., Yamaguchi, Y. Land use and land cover change in Greater Dhaka, Bangladesh: Using remote sensing to promote sustainable urbanization. *Applied Geography* 2009;29:390–401.