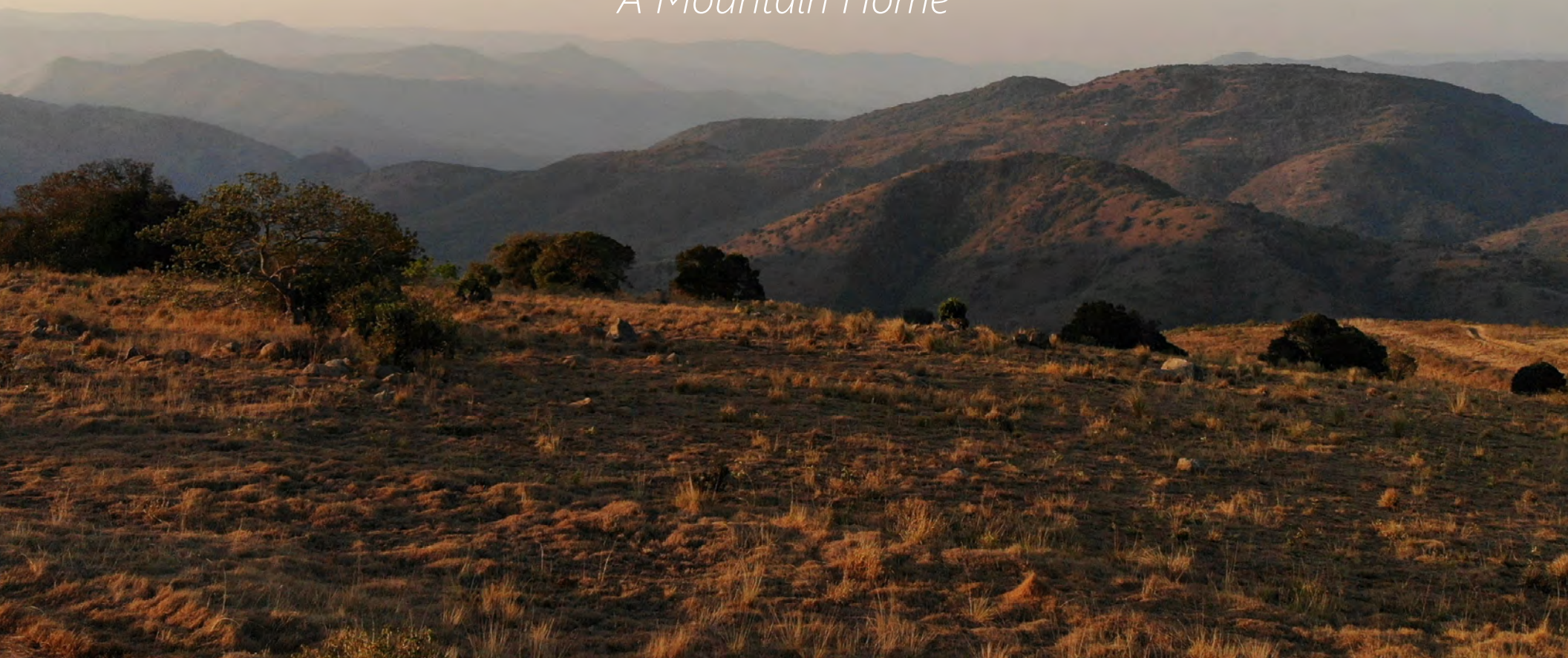


INTSABA

A Mountain Home





In a country surrounded by its beauty, sense of community, and tradition; breaking the chain of dependency in children is essential to the stability of the developing nation. For the children are the future of the country.

What if their upbringing is enriched instead of interrupted?

Enriched by experiencing God's love, learning Christian values and being empowered instead of being overwhelmed by the tragedies and calamities they face. What if their lives were enhanced by a rich education, as well as opportunities to grow physically fit and emotionally whole? What if children grew up in this beautiful environment knowing that they can become all God designed them to be?



Table Of Contents

4 Introduction

15 Vision

27 INTSABA Village

37 INTSABA Lodge

49 Acknowledgments

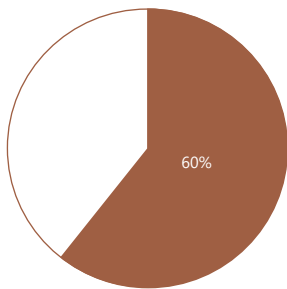


eSwatini

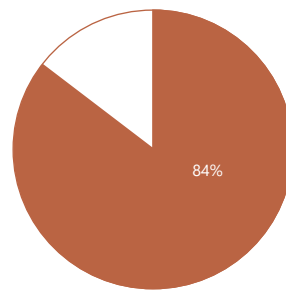
A Kingdom of Opportunity

eSwatini is a mountainous land-locked developing country in southeastern Africa bordered by Mozambique in the northeast and surrounded by South Africa. The kingdom is known for its natural beauty, reserves and festivals highlighting its culture. eSwatini, one of the smallest countries in Africa and the last absolute monarchy, is ruled jointly by King Mswati III and Mother Ntfombi Tfwala. The country has roughly 1.3 million people with a population growth rate of 1.2%. The average age of the youth population is 20.5 years, with people aged 14 years or younger constituting 37.5% of the country's total population. The official languages are siSwati and English. The dominant religions are Christianity and ancestral worship.

The country's main trading partner is South Africa. The majority of the country's employment is found in its agricultural and manufacturing sectors. In addition, tourism is very popular. People love having tourists visiting their country, giving them the opportunity to express their hospitality, highlight their rich cultural traditions and show case eSwatini's natural beauty.



Land Owned by The King



Ethnic Swazi Population





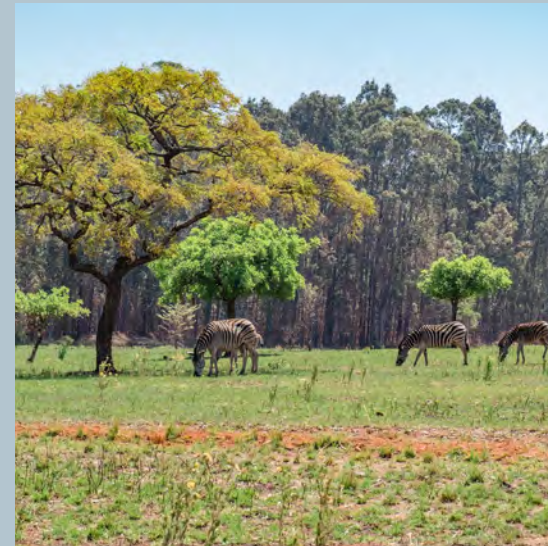
A Place of Community

Swazi's are warm-hearted and tight-knit. There is a tradition of caring and community.



A Place of Tradition

As the last standing kingdom in Africa, it is a proud country bound with its tradition.



A Place of Natural Beauty

Stunning scenery of mountains, valleys, forests, plains and wildlife are found across the country.



A Place of Stability

eSwatini is known to be a safe country for visitors who find the people friendly and kind.



A Place of Youth

More than 57% of the population of eSwatini is under the age of 20.



A Place of Creativity

eSwatini is well-known for its vibrant and creative arts and crafts culture.



Hope Seekers

Saving Orphans through Healthcare and Outreach

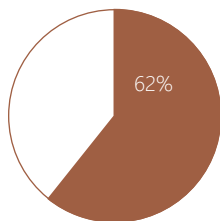
In 2006, the year Saving Orphans through Healthcare and Outreach (SOHO) came into being, over 33% of the population tested HIV/AIDS positive and it was reported that there were over 150,000 orphans with approximately 10% heading households.

Cynthia J. Prime
Co-Founder/CEO of SOHO

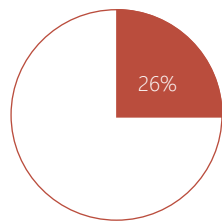
Although there has been progress in addressing and preventing HIV/AIDS in eSwatini, the HIV prevalence rate is still one of the highest in the world at 26%. With more than half of the population living below the poverty line and more than 57% under the age of 20, Orphans and Vulnerable Children (OVC's) face serious problems including: food insecurity, abuse, human trafficking, lack of consistent access to education, and increased vulnerability. In a country that is warm hearted and beautiful, the future of the present generation hangs in the balance.

With the continuous loss of children to these atrocities, having the ability to create a safe community for OVCs is critical. The mission of SOHO is to change the future of these children through a holistic program that addresses health of body, mind and spirit. The program utilizes educational opportunity, skills building, spiritual nurture and empowerment to overcome their many challenges and to embrace a hope filled future. After seeking for an opportunity to secure Title Deed land on which to build safe housing for children, the answer to our prayer came with availability of a beautiful mountain side farm where SOHO will be able to build safe housing and develop a Village for children at risk.

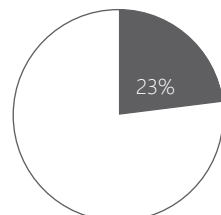
The quality of the work in this book is all that was expected and more. This is the beginning of a journey that will impact all eSwatini. The Architecture School at Andrews University will remain a significant companion on this wonderful journey. We consider these children as Hope Seekers and our coffee table book about them shows the courage and ingenuity they display as they strive to survive. We are indeed all 'hope seekers,' except that we have options and they don't. We praise God that there is now an open window to bring real hope to a population of children who need it most.



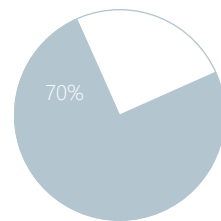
Swazis in Poverty



Swazi Youth with HIV/AIDS



Orphans and Vulnerable Children (OVC's)



Orphans Who Lost Their Parents to HIV/AIDS



Need for Care

Too few parents. 37.5% of the population is under 14 years old and needs to be taken care of.



Nurture

In a kingdom of opportunity, OVC's lack the life skills to succeed and to make a contribution to their society.



Child-Headed Households

Because of the HIV/AIDS epidemic, in eSwatini 15% of houses in the kingdom are child headed.



Healing

OVC's require whole health care. This includes proper nutrition, as well as, care of mind, body, and spirit.




Education

Less than 20% of Swazis complete high school. Good pre-school and primary level education would build a solid foundation for success.



Empowering

Skills training and entrepreneurship will help break the chain of dependency so children can grow to be self-sustaining.



*How beautiful on the mountains
are the feet of those
who bring good news,
who proclaim peace,
who bring good tidings,
who proclaim salvation,
who say to Zion,
"your God reigns!"*

Isaiah 52:7

INTSABA

Ilse and Wynand van Staden dreamt of a place where God's majestic creation could be experienced in all its forms. They hoped that visitors to their mountain home would be singularly blessed. The family now looks forward to seeing their "piece of paradise" become a sanctuary for children in need of a safe home and a gateway for exploration of the beauties of nature. The Van Staden's hope and prayer is to see INTSABA become a beacon of light, well cultivated, ecologically developed, and a uniquely healthy environment for residents and visitors.

Some of the family's greatest memories on the Intsaba included sabbath exploring trips on the land and the times spent with God as Psalm 121 says, "they lifted their eyes to the Lord and God came to their help." Wynand's family has seen the Intsaba turn from a marijuana farm to a land that displays God's great creation.

"You will be blessed when you come in and blessed when you go out."

Deuteronomy 28:6

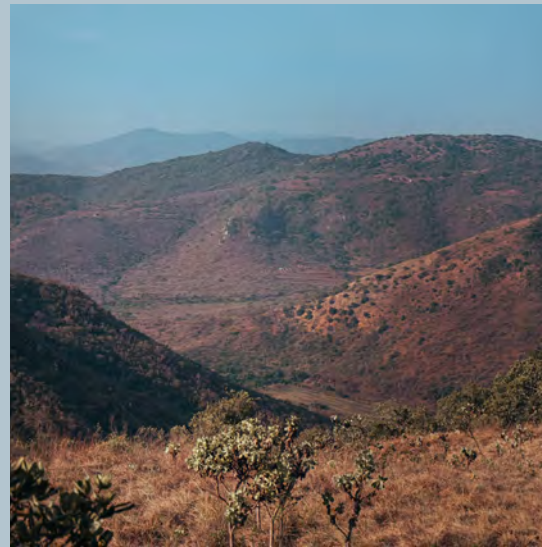


Ilse & Wynand van Staden
EchoShade
Netshade
Construction



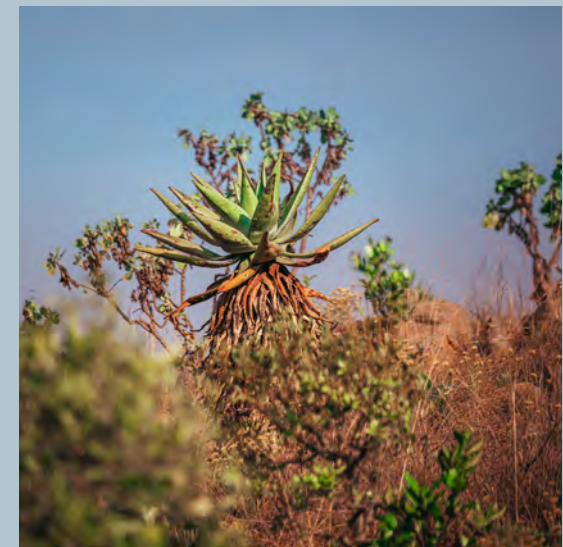
A Vast Mountain Farm

INTSABA farm is a 1075 acre mountainous farm with an elevation of 3568 feet. It is a combination of high and low veld with an average annual rainfall of 34 inches. The site is scenic and easily accessible from route MR9.



Natural Beauty

There is no place on INTSABA farm without a breathtaking view. The air is pristine. The location, an eco-tourist's magnet. From rolling hills to lush valleys, uninterrupted sunrise and sunset views, here nature is glorious.



Perfect for Agriculture

The subtropical climate offers opportunities for a range of agricultural initiatives; including the macadamia nut plantation already on the site. A wide variety of plants can be grown for both subsistence and cash crops.



Plenty of Water

The property is blessed with an abundant and year-round supply of water. Fifteen natural springs, streams, and river frontage keep it always well-watered, enabling continuous irrigation during the dry months.



Homestead

For over 15 years, the Van Staden family has lived on this land in the farm house that they designed and lovingly built. They desired to cultivate this land to its fullest potential in the hope of being a role model to their neighbors.



A Light in the Neighborhood

INTSABA farm has the potential to become a center of beauty and knowledge. As an eco-friendly site, its appeal will be widespread, impacting not only the surrounding community, but the Kingdom itself.

Process

During our visit, our goal was to share hope with vulnerable communities through Christ-centered, inspirational dialogue, music, prayer, and personal interaction. We bought shoes, raincoats, and underwear for the children in one of the most depressed communities.

We encouraged unemployed men in the community to develop and maintain a garden and provided them with the necessary resources to do so. We visited a high school where students are struggling with high suicide rates and we encouraged them to continue learning and planning for the future. Throughout this visit we used architecture as a tool to start conversations and uplift others.

"And whatever you do, do it for the glory of the Lord"

1 Corinthians 10:31



"A smile is contagious and it communicates joy, happiness and comfort. A smile is more heartwarming and it floods the beholder with emotions especially when its bearer is an Orphan who is very vulnerable. The experience of seeing young orphans who live amidst abuse, neglect, lack and unsafe houses and homes with a smile on their faces is a memory never to forget. Andrews University Architectural Team's visit in eSwatini was one of the best ministries I've ever experienced. The team made such a lasting impact that I still get questions from the kids on when they will come back."



Malvin Moyo
Seeds of Hope
Outreach
Coordinator



Town Square Sabbath

We had the opportunity to spend the day loving, playing, laughing, singing and ministering to kids in the informal settlement of Marekamp.



Sharing hope

In addition to showing loving concern, we listened to their stories and motivated them to aspire to a life of abundance.



Engaging local experts

We met with community leaders and listened to their suggestions as how to maximize the potential of the land.



Stakeholder Review

Preliminary concepts for presented for review and comment by SOHO and HOSA board members in Manzini.



Designing with Children

To get to know our client, we designed some houses with children at SOHO's Hope Discovery Learning Center in Nhlabeni.



Workshop with local youth

We engaged local youth via a design workshop at Manzini SDA City Church to discuss some problem solving ideas.



View of INTSABA site looking north into the Grand Valley



VISION

The Vision

A Christ-centered Sanctuary of Last Resort

The work contained in this report is very important to SOHO's strategic plan development and fundraising efforts for potential donors to see the envisioned development of the farm. In keeping with the Kingdom's National Children's Policy, this project will help achieve the goal of breaking the chain of dependency in Swazi children by providing them with the basic needs and exposing them to diverse opportunities that this land offers, such as tourism and agriculture. The place will serve as a center of excellence in the care of OVCs in eSwatini and Southern Africa. Therefore, the different deliverables include:

- Housing for up to 250 orphans+ staff
- Phase 1 cottage, each for 6 children + an Auntie or caregiver
- School and skills training center
- Social enterprisefacilities for trades and crafts
- Medical clinic and counseling center
- Arts/cultural center, and assembly/ worship hall
- Agricultural, security, and village support facilities
- Playgrounds and various sports and social gathering spaces
- Tourism lodge, retreat center, and self catering chalet
- Nature trails and Outdoor Recreational Activities

- **A Service Mindset**
Serving our targeted population with compassion as a beacon that points to God as the source of blessing. Embodying duty, responsibility, and commitment as change agents for the targeted communities.
- **The Value of Life**
Our model of service acknowledges every life as created and beloved by God regardless of race, gender, or economic status. In a patriarchal society where orphaned girls may be marginalized because of gender and poverty, we will work to provide an equal place at the table of life.
- **Education and Wellness**
With careful land stewardship, the project will provide a safe and healing environment for orphans and vulnerable children. Their education will be holistic (mental, physical, spiritual) and total wellness will be emphasized in every program.
- **Community Empowerment**
Empowering children and local people to develop self-worth, valuable skills, and a vision for the future. Equipping women to nurture vulnerable children and be gatekeepers in communities where parents are not present.
- **Sustainable Change**
Developing and delivering sustainable programs that are economically viable and safe, culturally authentic and local, yet attractive and welcoming.

"SOHO's long term vision for orphans and vulnerable children in HIV/AIDS affected communities is a safe living environment where the physical, mental, spiritual and emotional wellbeing of children are addressed, education is supported and skills are developed for the children to embrace their personal worth and reach their full potential.

With the help of The Andrews University School of Architecture, INTSABA farm is being designed as a creative, self-sustaining and functional environment conducive to total health and well-being for all."

Dr. Muna
Muna
Healthlife
Institute
+
HOSA
Board
Chair





01 INTSABA Village

Located on one of the flattest areas of the farm, the children's village will be developed to encompass the full range of activities needed for a well-rounded, healthy life.

02 Agricultural Land

There are 250 arable acres on the farm. Orchards are planted between the village and the surrounding neighbors; highlighting the nature of the place being a working farm.

03 Existing Farm

The existing farm house will be converted to guest accommodations for doctors, teachers, and other short-term volunteers. The barns will house service and construction equipment.

04 INTSABA Lodge

The visual connection of the lodge to the village is vital because in addition to the lodge supporting the village economically, visitors could learn so much more about the place by interacting with the children.

Bruce Smith
Goldhornet
Consulting
+
SOHO Business
Development
Chair



“The long-term vision for INTSABA is multi-faceted. INTSABA will be an exemplary property serving orphans and vulnerable children in eSwatini. In order for this mission to succeed, the property intends to be self-sustaining through 3 key elements: Agriculture, Tourism and Hospitality, and Social Enterprise. The site is uniquely positioned to deliver all three given its topography, water availability, and opportunity to employ local labor. The children growing on the INTSABA are thought to be ambassadors for the site and the mission. As a result, these children will develop life skills that will empower and enable them to grow healthy, self-reliant and become active citizens in eSwatini.”

Economic Sustainability

Leveraging the Power of Place

The **agriculture component** will provide the bulk of the food that is going to be used on the property. Sustainable techniques will be employed to yield the utmost in freshness and nutrition to feed the campus community. This gives the project the opportunity to be industry leaders of the healthy lifestyle movement.

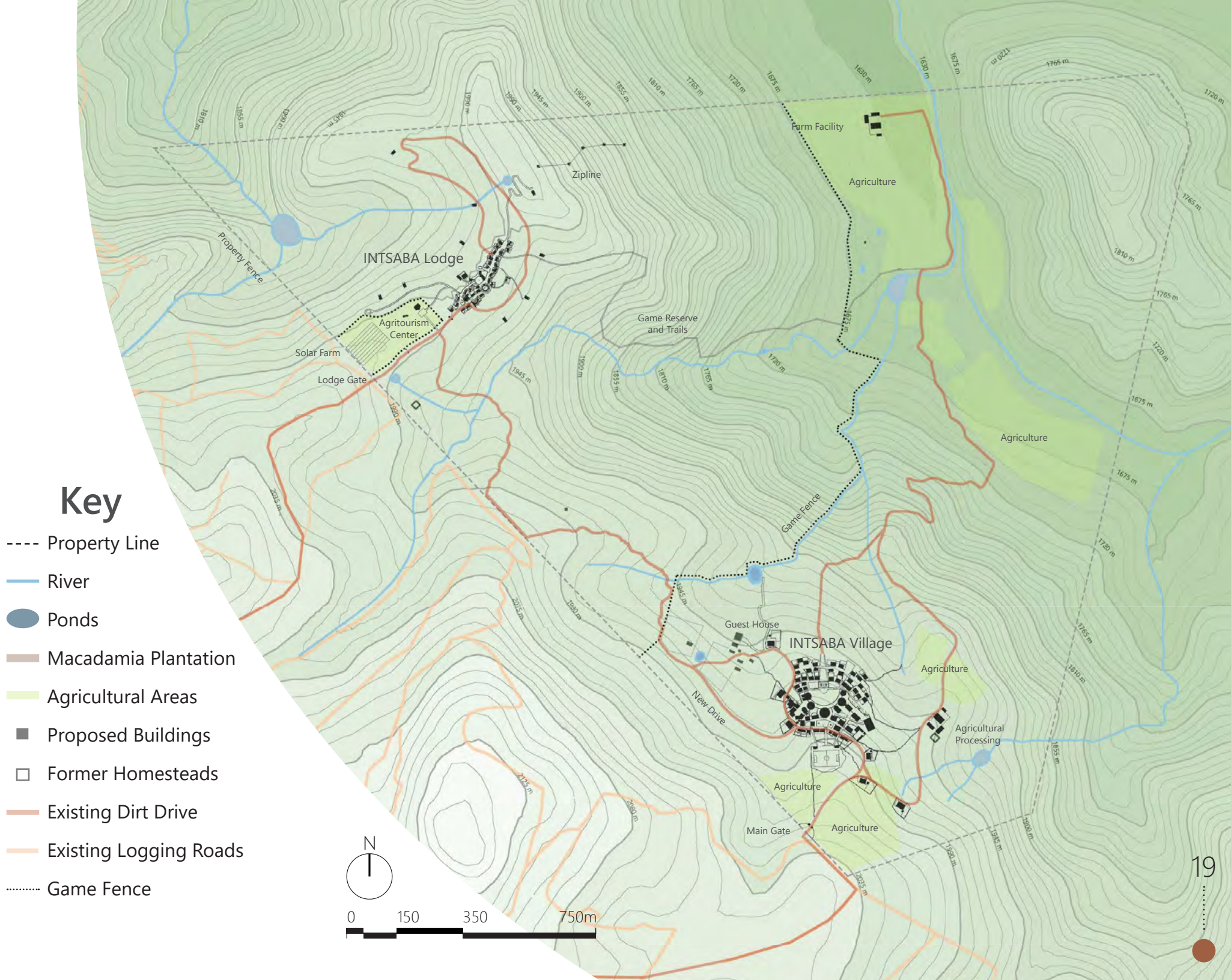
The **tourism and hospitality** entity is anticipated to bring global visitors “on property” to an upscale lodge serving healthy foods, picturesque mountain views, and giving them an opportunity to support and witness firsthand how the children of INTSABA are being served.

The social enterprise will encompass indigenous crafts produced on site for sale both in the Lodge, regionally, and eventually globally. This will not only be a way of teaching and training for the children to be self-sustained. It will be a source of community pride and a part of the branding strategy for the village itself.

“Currently there is no other Lifestyle Centre in eSwatini that offers a program where locals and guests can get training in healthy cooking, enjoy a detox or stop smoking program. Therefore, having an Eco Lodge and Lifestyle Centre on the site will not only be a marketing asset for the overall projects, it will also be a great way to attract tourists to eSwatini, since the kingdom of eSwatini has been named one of the planet’s top destinations for 2020. The INTSABA lodge will also be in a position to provide ministry, skills training, and jobs in various disciplines to the children and the communities around.”

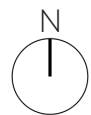


Pamela Cominetti
SOHO Hospitality Consultant
CEO, Summer Place, Malawi



Key

- Property Line
- River
- Ponds
- Macadamia Plantation
- Agricultural Areas
- Proposed Buildings
- Former Homesteads
- Existing Dirt Drive
- Existing Logging Roads
- Game Fence



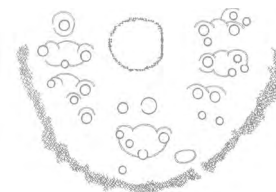
A Home To Build



Building Swazi Culture

eSwatini has a rich culture that has been preserved for over 400 years. The current building and living culture is greatly informed by the traditions that are passed down from generation to generation.

On INTSABA farm, the designs are intentionally inspired by these unique aspects of the culture. The design of the village specifically will be indicative of the Swazi culture. It will be a sanctuary for the children to grow into Godly and upstanding eSwatini citizens.





Built by Swazis for Swazis

A crucial aspect of the design will be ease of building, functionality, and durability. The buildings would provide locals with opportunities for employment and growth while it helps to sustain the lives of children.



Function in Joy

The beautiful arts and crafts that are so popular in the Swazi culture will be reflected in the hues and textures used in the Village. A sense of warmth and joy would be felt in the environment.



Working with local climate

With the blend of traditional and contemporary Swazi building materials and techniques, we can create buildings that function at their optimum in all variations of the local climate.



Designed for Community Life

Life in eSwatini revolves around the community. People spend most of their time outdoors and our houses will beautifully reflect this lifestyle.



Local Resources

The site has a variety of valuable materials that have been traditionally used by Swazi's for building purposes. These natural resources will be incorporated into our building construction.



Dwell Earth

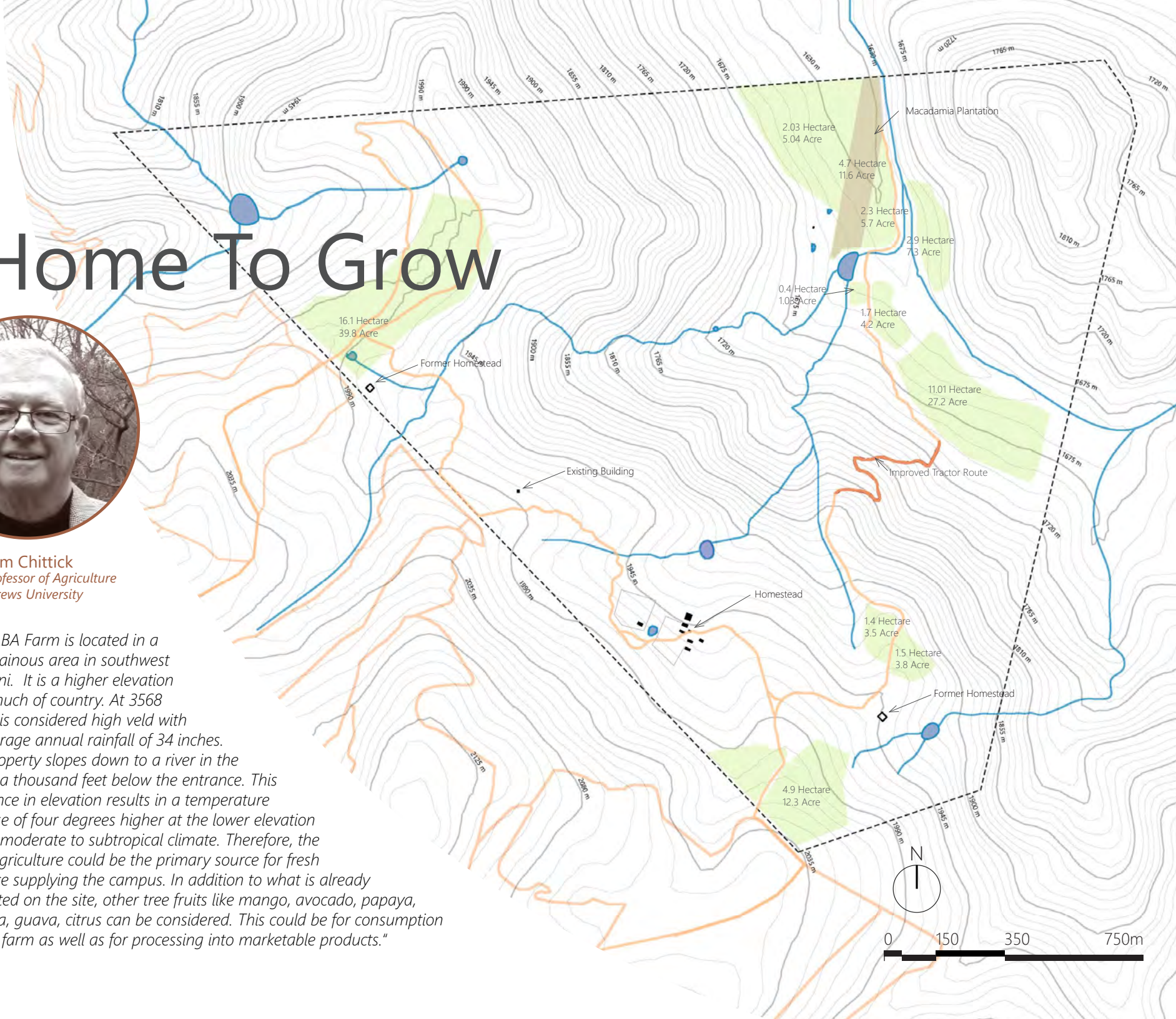
Dwell Earth, a compressed natural block making machine donated to SOHO, will be used to create durable, sustainable and energy efficient structures out of local materials.

A Home To Grow



Tom Chittick
Retired Professor of Agriculture
Andrews University

"INTSABA Farm is located in a mountainous area in southwest eSwatini. It is a higher elevation than much of country. At 3568 feet, it is considered high veld with an average annual rainfall of 34 inches. The property slopes down to a river in the valley, a thousand feet below the entrance. This difference in elevation results in a temperature increase of four degrees higher at the lower elevation with a moderate to subtropical climate. Therefore, the farm agriculture could be the primary source for fresh produce supplying the campus. In addition to what is already cultivated on the site, other tree fruits like mango, avocado, papaya, banana, guava, citrus can be considered. This could be for consumption on the farm as well as for processing into marketable products."





Good Land for Growing

In addition to how vast the land is, the site provides a source of spring water that can be channeled down to feed crops at the lower elevation. Currently, Macadamia trees are planted on 11 hectares near the river.



Unique Crops

The site is blessed with a year-round supply of water and a moderate subtropical climate. It has the potential to grow unique crops, trees and plants that makes the location even more appealing.



Agritourism

As an ecotourism site, INTSABA has the potential for innovative agricultural initiatives, as well as opportunities for lifestyle education and related sustainable enterprise.



Cultivating Healthy Lives

INTSABA farm is committed to healthful living with an improved diet and plant-based alternatives. A wide variety of fruits, vegetables, and natural resources will benefit the entire campus.



Growing Minds, Body and Spirit

Associated with the children's home will be a kitchen garden where the children will enjoy learning how to grow things.



Market Potential

A food processing facility will be established to preserve and can products for future use. This would serve both as a source of income and help with the branding of the farm.

A Home To Care For



Taking the existing farm as an example, the Van Stadens lived in such a way to reduce energy consumption. They took advantage of natural ways to produce energy like composting and the use of Solar Panels. They also used water harvesting and infiltration by creating different water deposits around the site.

The earth is the Lord's, and everything in it, the world, and all who live in it.

Psalm 24:1



Storm Water Infiltration

Due to severe topographical changes on-site, stormwater management is important to prevent flooding during the rainy season. Directing stormwater to dedicated infiltration points like rain gardens, helps to mitigate and reduce erosion caused by runoff.



Waste Water

Sustainably dealing with wastewater requires a system that can manage, filter, and recycle wastewater. Greywater recycling is the common way used while Blackwater recycling requires more filtration steps and more complex systems to be feasible.



Energy Sustainability

To reduce the overall energy consumption while simultaneously producing as much energy as possible on-site, strategies like roof-mounted solar arrays, a remote solar farm, and small, vertical-axis wind turbines could be used in both villages.



Water Harvesting

Additionally, barrels will collect rainwater and runoff from building eaves and overhangs. Rain barrel lids can be substituted for aquatic plants. Water from rain barrels can be used to water plants via direct hose hookup.



Solid Waste

For dealing with rubbish and solid waste, a combination of incineration, composting, and large-scale recycling could be used. Solid wastes, such as plastics, paper products, etc, can also be recycled into arts and crafts.



Photovoltaics

As the most logical and feasible option, photovoltaics can be used as the main source of energy production on-site. For a maximum production, solar panels will occupy the majority of north-facing roof space as well as several acres at grade.



Worshipping with OVCs at Marekamp, Sidvokodvo



INTSABA VILLAGE

Children's Village


Community Impact

INTSABA Village has been designed to incorporate healthy living, learning, and a social life that will be centered around God. This design of the village shows God's love. The verse that speaks to what we are trying to accomplish is found in Mark 9:36-37.

It talks about whoever takes in one of God's children is taking in God.

We wanted to keep a sense of the Swazi tradition alive so the children growing up know their history. To do so, we incorporated a traditional Swazi homestead in the center of the village. What would be the "great house" in a traditional homestead, we put our Father in Heaven's house, the Church. We positioned the children's housing furthest away from the public space for security reasons.

A special thing about this village is the opportunity for the children living here to experience outside involvement. A section of the village will be open to the public, giving the children a chance way to interact with people from the elsewhere. The village will be a light to others and show the love of Christ to those living around it.

- 
- 01 Welcome Center
02 Social Amphitheater
03 School
04 Children's Housing
05 Processing
06 Gate
07 Football Field
08 Social Enterprise
09 Reception
10 Clinic
11 Church
12 Pre-School
13 Gymnasium
14 School Admin.
15 Dining Hall
16 Outdoor Pavilion
17 Sabbath School
18 SOHO Admin.
19 Children's Playground
20 Infant Housing
21 Staff Houses
22 Guest House
23 Restaurant





01

Reception

The reception building is at the forefront of the village. This will engage visitors arriving to the welcome plaza where they will receive routine security information and direction.

02

Social Enterprise

Skilled professionals will teach the community different crafts like candle sculpting, goat soap, basket weaving, bead making, etc. at the social enterprise building.

03

Medical Clinic

This clinic is a vital part of the village because of the need for adequate medical care within the country. It will provide services that may not be currently available.

04

Church Plaza

The church is the most important building in the village and portrays God in the center. The church plaza will hold different gatherings and concerts that will be open to the public.



Security

Key

- Open to Visitors
- Secured School Compound
- Secured Children's Housing Area
- Access Limited by Retaining Walls
- Open for Special Events Only

Security Checkpoints

Reception

Layers of Access

In order to protect the children from any sort of abuse, the village is designed with security precautions. Nonetheless, in order for the children to successfully and easily re-integrate back and take part in developing their society and country, the children will not be isolated, but people will be able to come and interact with them in specific areas.

The village encompasses public, private, and semi-private areas that are separated by retaining walls. Parts of the village will only be accessible to the public during special events as indicated on the map. Additionally, the children's housing and school will be in contained areas.

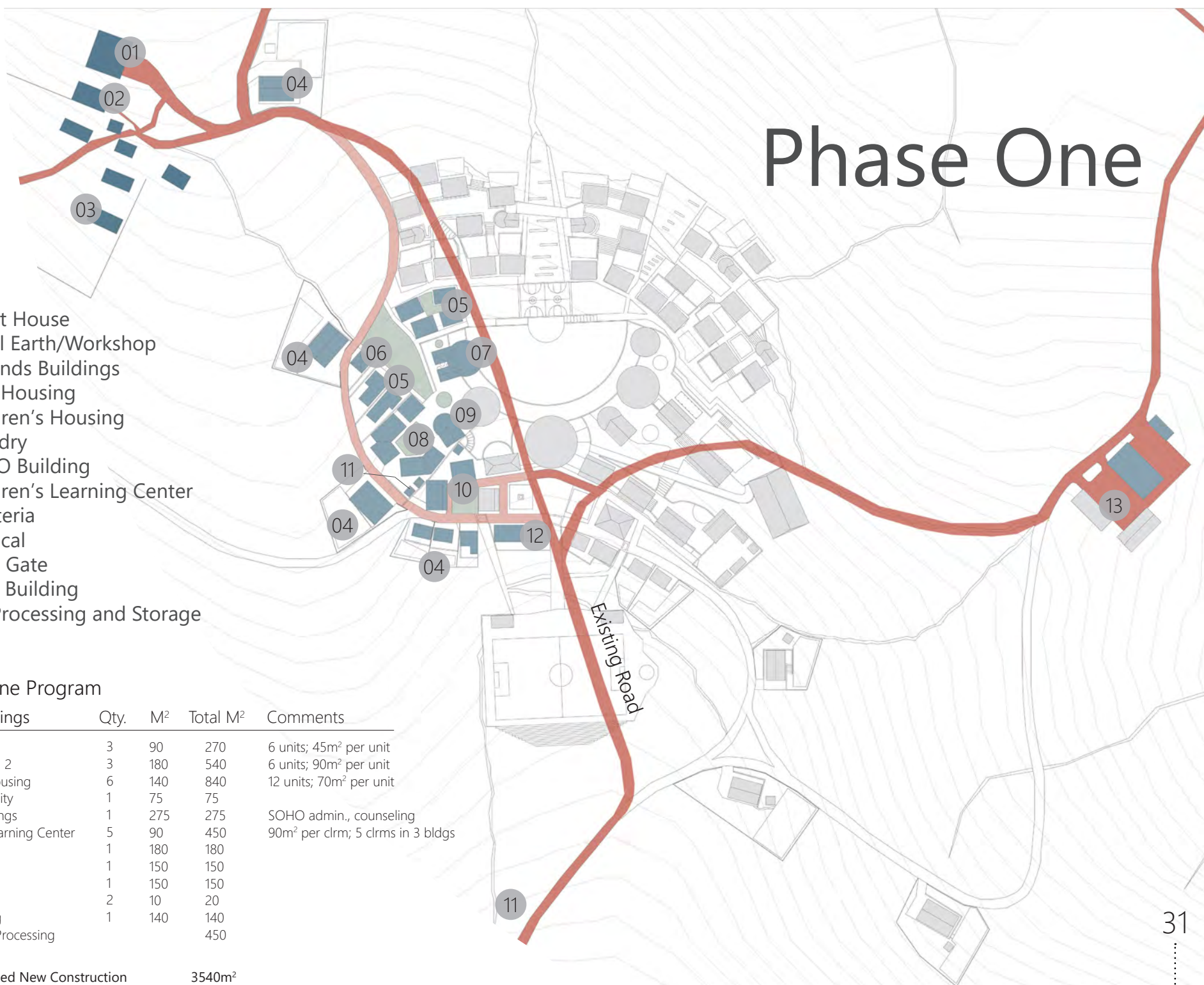
Phase One

Key

- 01 Guest House
- 02 Dwell Earth/Workshop
- 03 Grounds Buildings
- 04 Staff Housing
- 05 Children's Housing
- 06 Laundry
- 07 SOHO Building
- 08 Children's Learning Center
- 09 Cafeteria
- 10 Medical
- 11 Main Gate
- 12 Skills Building
- 13 Ag. Processing and Storage

Phase One Program

New Buildings	Qty.	M ²	Total M ²	Comments
Staff Housing	3	90	270	6 units; 45m ² per unit
Staff Housing 2	3	180	540	6 units; 90m ² per unit
Children's Housing	6	140	840	12 units; 70m ² per unit
Laundry Facility	1	75	75	
SOHO Buildings	1	275	275	SOHO admin., counseling
Children's Learning Center	5	90	450	90m ² per clrm; 5 clrms in 3 bldgs
Cafeteria	1	180	180	
Clinic	1	150	150	
Infrimiry	1	150	150	
Gate House	2	10	20	
Skills Building	1	140	140	
Agricultural Processing and Storage			450	
Total Proposed New Construction			3540m²	



Village Center

A Swazi Homestead Reimagined

In a community bound with strong, traditional cultural beliefs, the village fulfills the social, cultural and spiritual education needs for the children. Thus, certain buildings, like the church, were strategically positioned to reflect a traditional Swazi homestead. The church, centered in the middle, is positioned in the same way the grandma's house is in order to serve the spiritual needs and communal worship. The church will enable true worship of God, community uplifting, spiritual nurture, inner healing, education and fellowship.

Social Enterprise Workshops

Clinic and Welcome Plaza

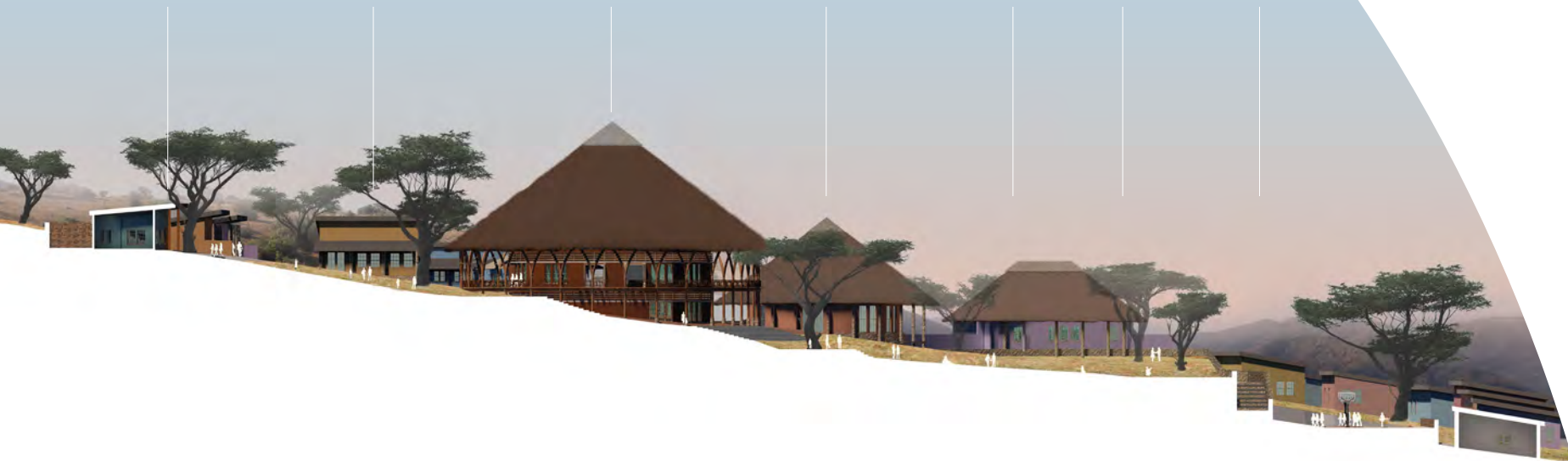
Church

Sabbath School and Meeting Rooms

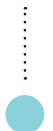
SOHO House
Offices and
Counseling

Outdoor
Amphitheater

Children's
Housing



Village section looking North





01

Grand Valley View

The second story of the church is the highest position in the village that enables one to see straight into the Grand Valley.

02

Amphitheater

This will be a flow out space for community gathering with expanded space as events require. A natural place to relax and reflect, as well as provide children a venue for artistic performances.

03

Church and Sabbath School

Proverbs 22:6 advises that a child be trained up in a Godly way so that as an adult he would not depart from it. The Sabbath School will provide children with spiritual instruction and quiet space.

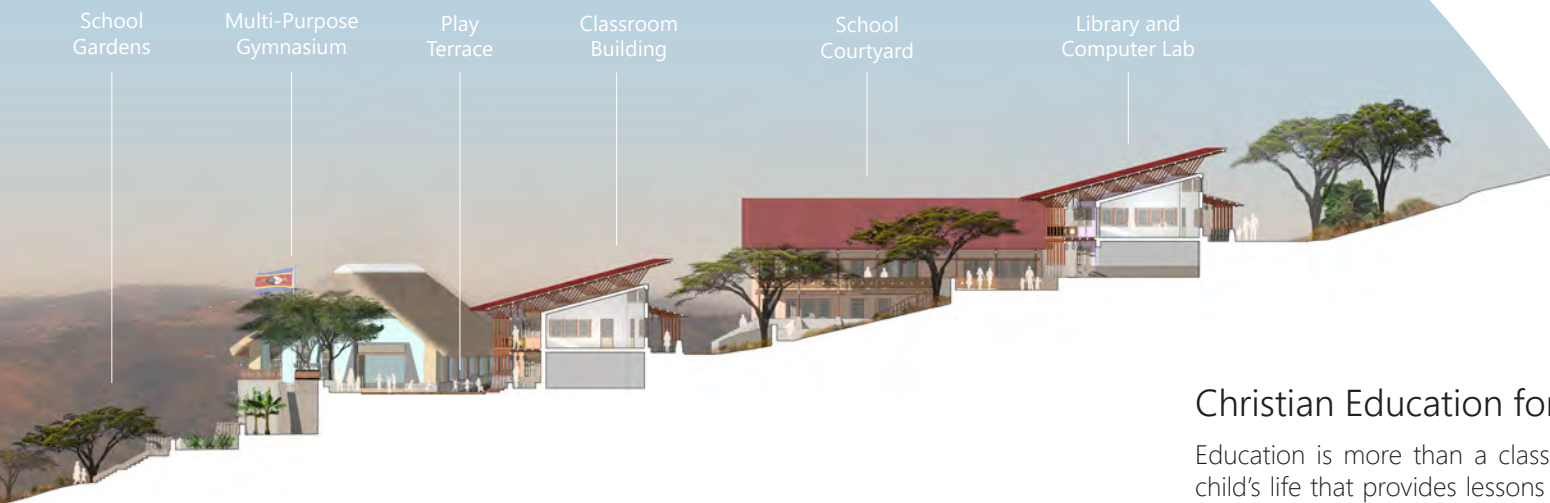
04

The SOHO House

The SOHO administration building provides counseling and emotional support for children dealing with difficult life experiences or trauma.



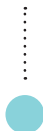
The School



School section looking East

Christian Education for a Christ-centered Life

Education is more than a classroom and a teacher but a moment in a child's life that provides lessons that last a lifetime. In the village, children will receive a holistic education rooted in Biblical Christian values. In addition to spiritual nurturing, education will target practical issues such as poverty reduction, by offering vocational skills, agricultural science and entrepreneurship. A healthy lifestyle will be emphasized through diet and physical fitness activities, as well as HIV/AIDS prevention. A STEM education model will enable children to compete successfully in placement exams and pave their way to higher education. The design of the school maintains ADA access throughout the campus and provides places for gathering in several key areas with the courtyard terrace being the main space for playing or spill out after performances in the gym.





01 Classrooms

Each classroom is ADA accessible and designed to comfortably seat a group of 24 students. Natural light and air is unrestricted and filters in through the terraces and raised roofs.

02 Gymnasium

A gym and plenty of playground space will promote healthy living. The gymnasium will also serve as a multipurpose building for the school for different events or activities when needed.

03 Library

The school's campus provides a library with a computer lab that introduces the children to technology which will be used as a tool in their learning.

04 Play Terrace

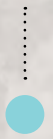
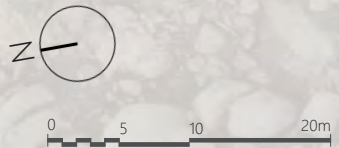
The terrace is a place for the children to spill out and play. It provides a variety of spaces to sit, gather, and play in both shaded and sunny environments.

Homes for Children

A Place for Holistic Living

The residential family units have been designed to be the building blocks for a nurturing and self-sustaining community. Each individual household will be the home for a group of 4-6 children, cared for by a trained Auntie or Caregiver. The spaces within the residential compound have been designed with the purpose to provide the children with an adequate shelter to grow, learn and communicate. The design also ensures that each child has privacy, as well as, the opportunity to build their social skills in their shared community spaces. While each individual house has a kitchenette, there will be a shared community kitchen designed with a thatched roof where family units will alternatively spend evenings learning valuable homemaking skills like cooking and cleaning. As the children grow older, they will have the opportunity to learn traditional crafts, like thatching.

- Laundry and Medical Supplies
- Shared Kitchen
- Traditional Stove
- Play Court Steps
- Living Space
- Bedrooms
- Storage Closet
- Garden
- Auntie's Room





01 Water Collection

In a country that has experienced droughts in the past, preservation of natural resources including rainwater harvesting and water reclamation is a valuable lesson for children.

02 Shared Kitchen

The houses are grouped around a shared kitchen where family units will spend evenings together while children learn valuable homemaking skills like cooking and cleaning.

03 Photovoltaic roofs

With access to plenty of sunlight, the sloped roofs of the houses provide opportunity for placement of solar panels. Increasing sustainability through conservative energy consumption.

04 Children's gardens

There will be an adjoining garden, where children can learn how to grow and care for fresh vegetables and herbs that will be part of their family meals giving them an adequate, balanced and healthy diet.



View from lodge ridge looking west



INTSABA LODGE

INTSABA Lodge



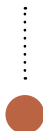
Rooted in Nature

The beauty and eco-orientation of INTSABA farm will make it appealing to visitors beyond the Swazi borders. The INTSABA lodge is a guest hamlet across the valley, in which guests and visitors are invited to enjoy a real traditional eSwatini experience. The hamlet offers different opportunities to meet and interact with local people who live and work on the premises. This part of the campus will include: chalets with different levels of privacy, some on the rural outcroppings where you will be greeted by a flock of k'tumbas.



- 01 Reception
- 02 Restaurant
- 03 Spa
- 04 Teaching Kitchen
- 05 Health Facility
- 06 Agrotourism
- 07 Community Housing
- 08 Rural Housing
- 09 Plaza
- 10 Pool
- 11 Orchard
- 12 Game Reserve
- 13 Zipline

0 20 40 60 100 m





01 Game Reserve

For OVC's and guests alike, views of non-threatening wildlife grazing will heighten the pleasure in their living experience. As an eco-tourism site, emphasis will be placed on preservation of wildlife in its natural habitat.

02 Lodge

The lodge will be a place where guests will enjoy Swazi meals and interact with local people who live and work in the proximity. This will also be a place where they can occasionally meet the children.

03 Wellness Center

The lodge provides a wellness center equipped with a spa, pool and teaching kitchen. Guests will enjoy breathtaking views that overlook the mountains and invite relaxation.

04 INTSABA Village

The INTSABA Resort is located on the neighboring mountain ridge, physically highlighting the relationship between the two. In this way, the children are always in view and in our hearts.

Swazi Hamlet

An Authentic Experience

The design of the lodge will facilitate experience of true Swazi hospitality as staffers will be able to interact with visitors and be a source of information about Swazi life. The chalets adjacent to the lodge are designed for comfort and convenience with a feel of "home". The southeast views will capitalize on the natural landscape, while at the back there is a panoramic view of rolling hills and mountains, a perfect place for memorable experiences.





01

Restaurant

The farm to table freshness will be a hallmark of food provided. Experienced chefs will present creative dishes. Good health and taste will combine to create an enjoyable experience.

02

Community Living

The campus is designed to emphasize community and connection. Visitors who are volunteering or just visiting, artisans making crafts, staffers heading home from work... are all part of the tapestry of people sharing and learning together.

03

Gathering Area

The circular plaza with inviting seating areas decorated with plants and water features or the fire pit where new friends can gather, are all spaces that add to the ambience of restfulness.

04

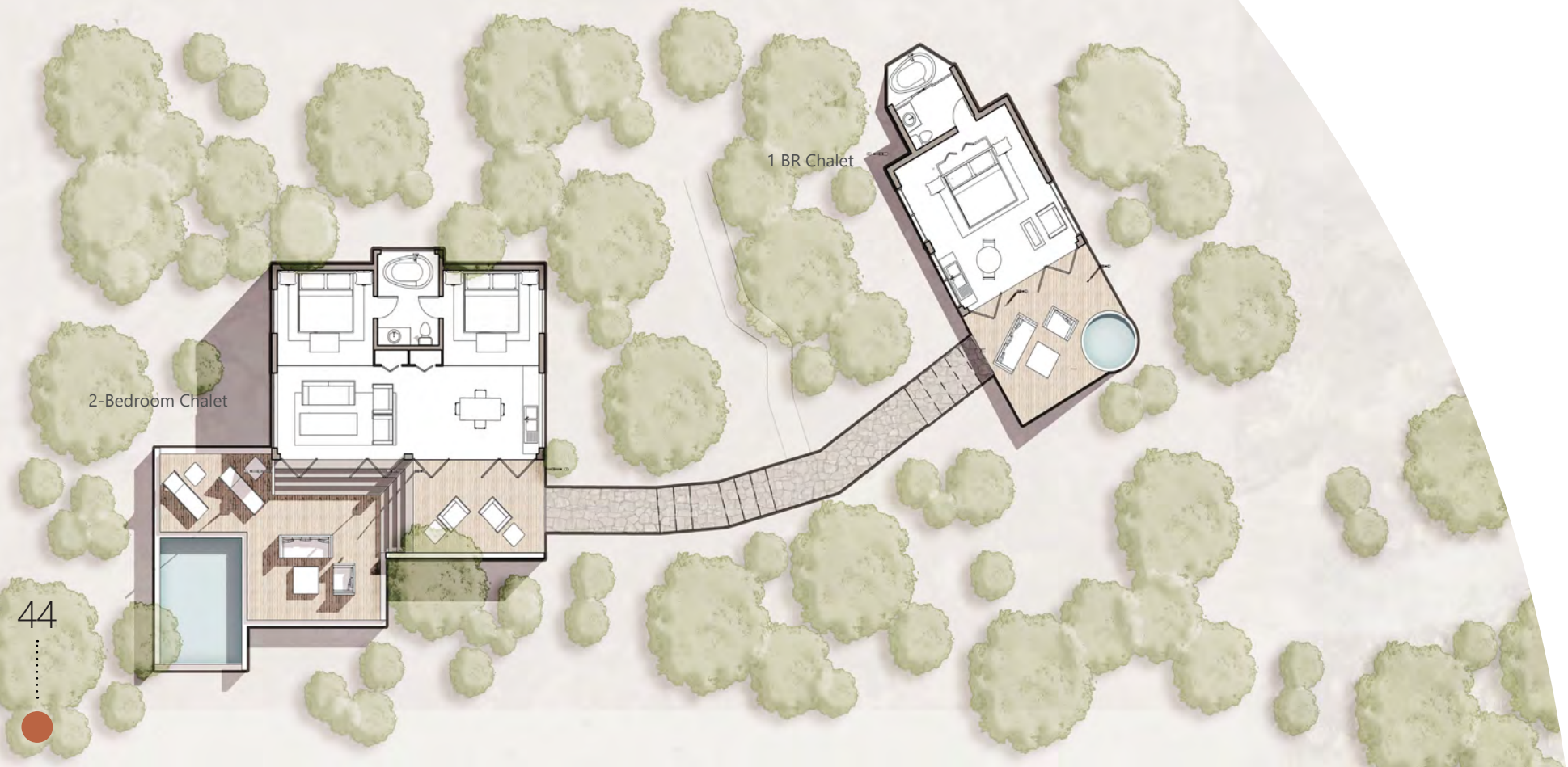
Naturalistic Landscape

INTSABA features nature at its best. Living spaces for guests are designed to accent the local flora and fauna. The starry skies, sunsets and sunrises all contribute to a healing environment.

A Place to Be Well

Tent Chalets

For visitors seeking respite in nature, luxury chalets, some hidden in nature, will offer the comfort of a hotel with the raw beauty of a bush lodge. The smells of nature at its most pristine, fresh air and the views from the chalets all create a healing and inviting living experience. Privacy, safety and comfort are all emphasized.



2-Bedroom Chalet

1 BR Chalet



01 Wellness Center

The Lifestyle Center will offer spa treatments, aroma therapy, detox and stop smoking programs. The lifestyle programs will make the Center an appealing destination for those seeking optimum health.

02 Views and Nature

With its abundance of natural beauty, this is the perfect place to de-stress. Walking and driving tours will allow guests an intimate experience of nature. The thatch roofing and natural materials all reflect the untainted beauty that is the charm of INTSABA.

03 Traditional architecture

Natural and traditional architecture will integrate to create an authenticity to the Swazi experience. All elements come together so that form and function harmonize with natural colors and textures.

04 Teaching Kitchen

The abundance of farm grown produce, provides ample opportunity to teach both food preparation and preservation. Creative ways of preparing plant-based foods will be introduced to Swazis who rely on natural foods but lack the expertise in this type of food preparation.

Moving Mountains



Andrew von Maur and
Christopher Perry
Professors of Architecture
Andrews University

Matthew 17:20 tells us that even a very small faith can move mountains: "Move from here to there,' and it will move; and nothing will be impossible for you." This verse challenges us to consider its reality. Mountains are big. The Bible also describes kingdoms as mountains. Kingdoms, including their many challenges, are even bigger.

As we face the project described herein - designed to serve and transform the most vulnerable on a mountain farm, in a mountain kingdom filled with vulnerable little ones - we are asked to consider the promise of faith. Paul reminds us that "faith is the substance of things hoped for, the evidence of things not seen. For by it the elders obtained a good testimony."

Praise God! We have seen kingdoms moved before.

INTSABA asks us to remain faithful to the One who revealed His power and love to Moses, John, Isaiah and all Israel on the top of mountains.

Strategic Priorities

- **Implementation**
The development of INTSABA will be in phases. Each new phase will increase the impact of the overall development on the children, the community and visitors. The first phase will include the first wave of housing for the children and the infrastructure to enable them to begin a new life. This will include food services, educational facilities, a gymnasium that will be multi- purpose initially, staff accommodations and agriculture to support their nutritional needs. Each phase will add new opportunities and resources benefitting the children and the community so that INTSABA will be a catalyst for transformation locally, regionally and ultimately, nationally.
- **Security**
For children who grow up familiar with abuse, safety and security are critical elements in their living environment. While INTSABA farm will welcome volunteers, and visitors, a security plan will establish boundaries for the safety of the children. All non-resident workers and visitors will experience basic security clearance. Areas such as classrooms and homes will have only supervised access.

Access and egress will be influenced by configuration of the streets so that there will be no need to traverse the children's living spaces in order to get around. Security for chalet and lodge occupants will also be addressed so that visitors wanting to experience the healing and invigorating aspect of the environment, would be able to do so undisturbed.
- **Mission**
Health of body, mind and spirit, for orphans and vulnerable children, workers, volunteers and visitors, is the desired result of being at INTSABA Farm. The theme of 'growing hope and changing the future' resonates in the quality education, excellent nutrition, Christ centered spiritual upliftment, livelihood skills empowerment and a sense of purpose including giving back to the community.



Acknowledgments

INTSABA | A Mountain Home

This project was jointly commissioned by Saving Orphans through Healthcare and Outreach (SOHO), based in Indianapolis, Indiana, USA. It was prepared by the 2019 graduate Urban Design Studio at the Andrews University School of Architecture & Interior Design for the glory of God, and to help advance the joint mission of SOHO and Hope Seekers Alliance (HOSA), based in eSwatini.

©2019 Andrews University

Principal SOHO Contributors

Cynthia J. Prime, CEO and Co-Founder, SOHO
Dr. Muyabala Munachitombwe-Muna, HOSA Board Chair, eSwatini
Tom Chittick, Professor of Agriculture (retired), Andrews University
Pamela Cominetti, Principal CEO, Summer Place, Malawi
Bruce Smith, SOHO Business Development Chair
Pastor Malvin Moyo, Seeds of Hope Outreach Coordinator, eSwatini
Maureen Meyer, SOHO Program Development Associate
Gedion Padilla, HOSA Board Member, eSwatini
Lyle Hutton, HOSA Board Member, eSwatini
Dr. Judith Lloyd Storfjell, SOHO Advisory Team Member
Phillip Prime, Friend of SOHO

Andrews University Contributors

Stella Abijuru, Rwanda | Crystal Babb, Canada | Javier Britton, Grenada | Stephanie Davis, Honduras | Jenae Fleming, Georgia | Aldeana Foster, Michigan | Dustin Kolberg, Michigan | Gwendoline Ndikumagenge, Burundi | Christian Ramos, Indiana | Johnnal Saint-Germain, Haiti | Hilda Rugut, Kenya | Jessica Snively, Illinois | Andres Vitela, Indiana | Andrea Wagoner, Michigan | and Marcelle Thomas-Richardson, Guyana
Professors Andrew von Maur, Christopher Perry, and Troy Homenchuk | School of Architecture & Interior Design
Professor Dr. Padma Uppala | School of Population Health, Nutrition & Wellness
Wandile Mthiyane | Ubuntu Design Group, Durban, South Africa

Special Thank You

Lucky Ndlovu, Director, National Children's Services Department, Deputy Primer Minister's Office, Kingdom of eSwatini
Ilse and Wynand van Staden, Grand Valley, Shiselweni, eSwatini
Peter Dlamini and the Seventh-day Adventist "City Church", Manzini, eSwatini





Let the little children come to me and do not hinder them, for
to such belongs the kingdom of heaven.
Matt. 19:14