

Rockefeller University

Digital Commons @ RU

Publications

Steinman Laboratory Archive

2016

Dendritic cells induce a subpopulation of IL-12R β 2-expressing treg that specifically consumes IL-12 to control Th1 responses

Uri Sela

Chaegy Park

Andrew Park

Follow this and additional works at: <https://digitalcommons.rockefeller.edu/steinman-publications>

RESEARCH ARTICLE

Dendritic Cells Induce a Subpopulation of IL-12R β 2-Expressing Treg that Specifically Consumes IL-12 to Control Th1 Responses

Uri Sela^{1,2*}, Chae Gyu Park^{1,3}, Andrew Park¹, Peter Olds¹, Shu Wang², Ralph M. Steinman^{1†}, Vincent A. Fischetti²

1 Laboratory of Cellular Physiology and Immunology, Chris Browne Center for Immunology and Immune Disease, The Rockefeller University, New York, NY, 10065, United States of America, **2** Laboratory of Bacterial Pathogenesis and Immunology, The Rockefeller University, New York, NY, 10065, United States of America, **3** Laboratory of Immunology, Brain Korea 21 PLUS Project for Medical Science, Severance Biomedical Science Institute, Yonsei University College of Medicine, Seoul, 03722, Republic of Korea

† Deceased.

* usela@rockefeller.edu



OPEN ACCESS

Citation: Sela U, Park CG, Park A, Olds P, Wang S, Steinman RM, et al. (2016) Dendritic Cells Induce a Subpopulation of IL-12R β 2-Expressing Treg that Specifically Consumes IL-12 to Control Th1 Responses. PLoS ONE 11(1): e0146412. doi:10.1371/journal.pone.0146412

Editor: Derya Unutmaz, Jackson Laboratory, UNITED STATES

Received: November 13, 2015

Accepted: December 16, 2015

Published: January 8, 2016

Copyright: © 2016 Sela et al. This is an open access article distributed under the terms of the [Creative Commons Attribution License](https://creativecommons.org/licenses/by/4.0/), which permits unrestricted use, distribution, and reproduction in any medium, provided the original author and source are credited.

Data Availability Statement: All relevant data are within the paper and its Supporting Information files.

Funding: Grant support was provided by the National Institute of Allergy and Infectious Diseases (AI051573). RMS received the funding. CGP was supported by grants from the National Research Foundation of Korea (NRF-2013R1A1A2058427, NRF-2014R1A4A1008625).

Competing Interests: The authors have declared that no competing interests exist.

Abstract

Cytokines secreted from dendritic cells (DCs) play an important role in the regulation of T helper (Th) cell differentiation and activation into effector cells. Therefore, controlling cytokine secretion from DCs may potentially regulate Th differentiation/activation. DCs also induce *de-novo* generation of regulatory T cells (Treg) that modulate the immune response. In the current study we used the mixed leukocyte reaction (MLR) to investigate the effect of allospecific Treg on IL-12, TNF α and IL-6 secretion by DCs. Treg cells were found to markedly down-regulate IL-12 secretion from DCs following stimulation with TLR7/8 agonist. This down-regulation of IL-12 was neither due to a direct suppression of its production by the DCs nor a result of marked DC death. We found that IL-12 was rather actively consumed by Treg cells. IL-12 consumption was mediated by a subpopulation of IL-12R β 2-expressing Treg cells and was dependent on MHC class-II expressed on dendritic cells. Furthermore, IL-12 consumption by Tregs increased their suppressive effect on T cell proliferation and Th1 activation. These results provide a new pathway of Th1 response regulation where IL-12 secreted by DCs is consumed by a sub-population of IL-12R β 2-expressing Treg cells. Consumption of IL-12 by Tregs not only reduces the availability of IL-12 to Th effector cells but also enhances the Treg immunosuppressive effect. This DC-induced IL-12R β 2-expressing Treg subpopulation may have a therapeutic advantage in suppressing Th1 mediated autoimmunity.

Introduction

T cell differentiation into effector Th cells in response to an antigen is stimulated by DCs together with cytokines. For example, for Th1 cell differentiation, DCs provide the IL-12 required by the Th cells [1–5]. The various types of Th cells provide resistance to different

types of infection but also mediate unwanted reactions such as autoimmunity, allergy and transplant rejection [6–8]. Therefore, regulating cytokine secretion from DCs would be important in modulating Th cell activation and differentiation and subsequently to achieve remission in some of these pathological conditions.

Naïve CD4⁺ cells can also be induced to become regulatory T cells (iTreg) upon stimulation with an antigen presented by DCs in the presence of TGF β [9, 10]. The combined presence of TGF β and all-trans-retinoic-acid (ATRA) enhances the induction of alloreactive Treg from the polyclonal CD4⁺ T cells [11]. These *de-novo*-generated iTreg exert substantial specificity in suppressing allogeneic DC both in culture and in a mouse model of graft vs. host disease [11]. Treg cells can inhibit T cell function by several mechanisms [12, 13], some of which require direct Treg suppression of DCs. This suppression involves down-regulation of CD80 and CD86 expression on DCs [14, 15] and up-regulation of its indoleamine 2,3-dioxygenase (IDO) activity [16]. These effects of Treg on DCs are mediated by the co-inhibitory molecule CTLA-4, [16, 17] a major molecule with which Treg regulate antigen presenting cell (APC) function [18], and by a possible effect of IL-10 secreted from Treg [19]. However, the direct effect of Treg in general and more specifically of iTreg on cytokine secretion by DCs is less well established.

The MLR system enables both the induction of Treg from the polyclonal repertoire of CD4⁺ T cell population and the evaluation of their specificity to the inducing allogeneic DCs [11]. In the present study we used the MLR system [11] to investigate whether allospecific polyclonal iTreg cells can regulate DC secretion of IL-12, TNF α and IL-6, as well as its mechanism and effect on the Th response.

Results and Discussion

DC-Induced Treg Cells Specifically Down-Regulate IL-12 Secreted from DCs by Its Consumption

To determine if iTreg cells reduce cytokine secretion by DCs, we first used Balb/c DCs to induce allospecific iTreg from C57Bl/6 (B6) Foxp3⁻ CD4⁺ cells as described previously [11], and S1 Fig. The iTreg were then incubated with fresh Balb/c DCs for 24 hrs, after which TLR 7/8 ligand Thiazoloquinolone (CL075, 3M002) was added for an additional 24 hrs. CL075 induced IL-12 release from DCs, but this was completely blocked when iTreg were added (Fig 1A). In contrast, TNF α release was only mildly reduced by adding iTreg (up to 30%, S2 Fig).

To test whether suppression of IL-12 production also occurred when iTreg were suppressing an immune response, we added the iTreg to Balb/c DC along with fresh B6 CD4⁺ cells. The MLR between B6 T cells and Balb/c DC produces a powerful immune response but does not detectably result in IL-12 release unless CL075 was added (Fig 1B). The main source for IL-12 production and release into the medium was the DCs as expected (S3 Fig right and left). Addition of iTreg but not CD4⁺CD25⁻Foxp3⁻ (DN) cells significantly down-regulated IL-12 secretion in a dose dependent manner (Fig 1B). However, production of two other cytokines, TNF α in response to CL075 and IL-6 in response to LPS, was only slightly reduced (~30%) following the addition of iTreg (S4 Fig right and left). Thus, based on these results, one functional effect of iTreg is to specifically suppress DC by reducing the level of secreted IL-12 in response to a TLR7/8 agonist.

To evaluate the specificity of the suppressive function of iTreg on IL-12 secretion from DCs, we generated iTreg cells by co-culturing B6 CD4⁺CD25⁻Foxp3⁻ cells (double negative) with either allo Balb/c DCs or SJL DCs in the presence of TGF- β and ATRA. The sorted CD4⁺CD25⁺Foxp3⁺ cells (double positive), termed “iTreg anti Balb/c” (when induced with Balb/c DCs) or “iTreg anti SJL” (when induced with SJL DCs), were shown previously to

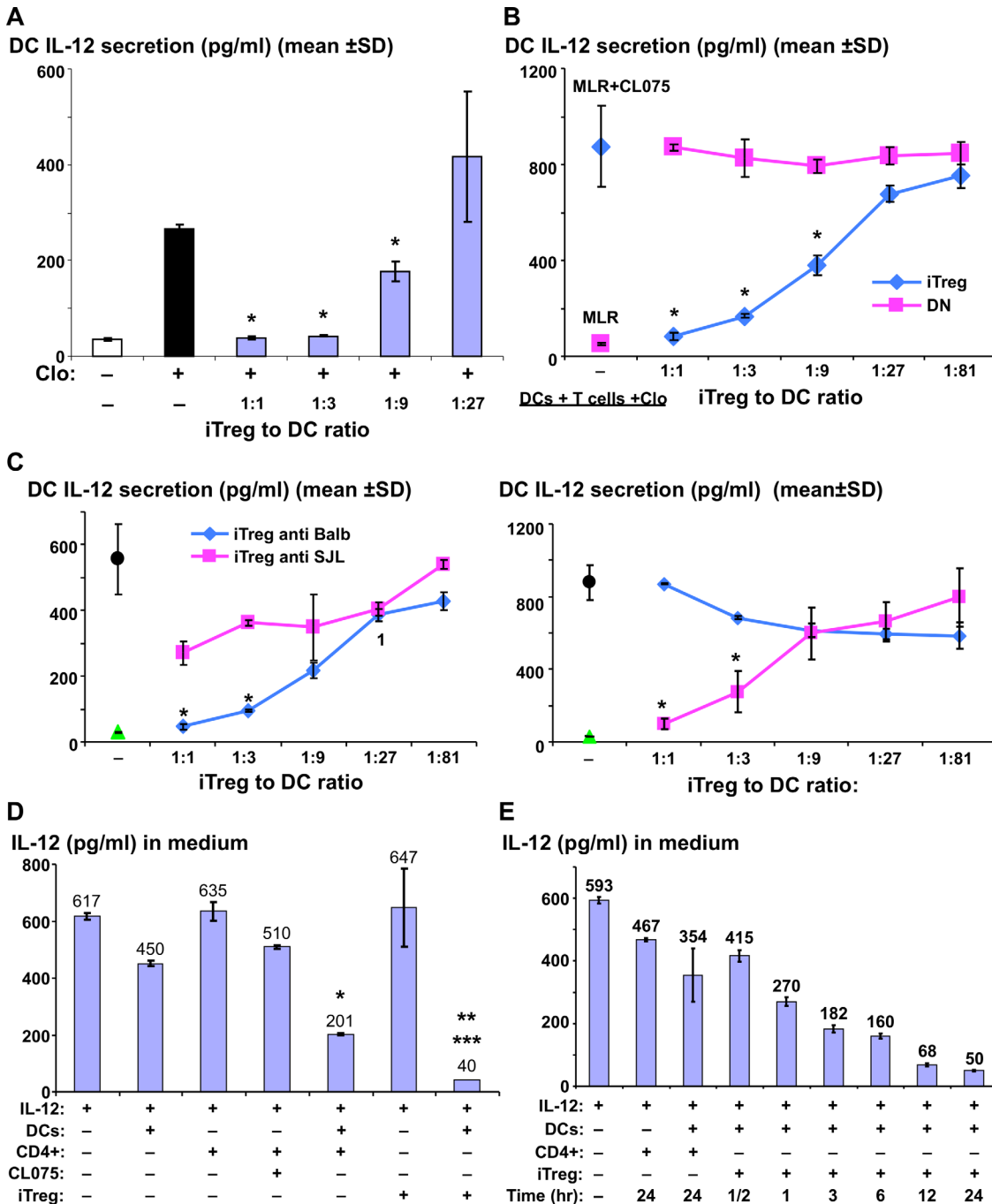


Fig 1. DC induced Treg specifically down-regulate IL-12 secreted from DC by its consumption. (A) Balb/c DCs were incubated (24hr) either alone or with various ratio of C57Bl/6 iTreg that were induced with Balb/c DCs (iTreg anti Balb). CL075 (1 μg/ml) was added to the culture and 24 hr later the level of secreted IL-12 was measured by ELISA. (B) Co-culture of Balb/c DCs and C57Bl/6 CD4+ T cells (MLR) was incubated alone or co-incubated with either anti Balb/c iTreg or CD25⁺Foxp3⁺ (RFP) (Double Negative, DN) cells for 24 hrs after which CL075 was added and IL-12 measured as in A. (C) Co-culture of CD4+ T cells and either Balb/c DCs (left panel) or SJL DCs (right panel) were incubated alone or co-incubated with B6 iTreg cells induced with either Balb/c DCs (iTreg anti Balb/c) or SJL DCs (iTreg anti SJL), after which CL075 was added and IL-12 was measured as in A. (D) IL-12p70 (800pg/ml) in culture medium was incubated alone or with either DCs, CD4+ T cells, or iTreg alone or with a co-culture of DCs and either CD4+ or anti Balb iTreg. Levels of IL-12 that remained in the medium were measured 48hrs later by ELISA. [*, ** = compared to medium with IL-12, *** = compared to co-culture of DCs and CD4+ in medium with IL-12]. (E) Time kinetics of IL-12 level in a medium added with either IL-12 alone or with DCs and anti-Balb iTreg. One representative experiment of three is shown. The consumption assay is one representative out of 6. Error bars denote mean ± SD. *, *** = P < 0.05, ** = P < 0.001.

doi:10.1371/journal.pone.0146412.g001

specifically suppress an MLR induced by either Balb/c or SJL DCs [11]. Here we found that simultaneously with suppression of T cell proliferation in the context of the MLR (data not shown), the iTreg also down-regulated CL075-induced IL-12 secretion from DCs specifically. These “iTreg anti Balb/c” cells down regulated CL075-induced IL-12 secretion from Balb/c DCs more effectively than “iTreg anti SJL”, and vice versa for IL-12 secretion from SJL DCs (Fig 1C left and right, respectively). Specificity was further evidenced in the finding that “iTreg anti Balb/c” significantly down-regulated the CL075-induced IL-12 secretion from Balb/c DCs, but did not affect IL-12 secretion from B6 DCs (Fig 1C, S5 Fig). On the other hand, when added to F1 (Balb/c X B6) DCs, “iTreg anti Balb/c” significantly down-regulated CL075-induced IL-12 secretion in the same manner as it affected Balb/c (Fig 1C, S5 Fig). We conclude that iTreg selected on allogeneic DC of one type, specifically suppress IL-12 from the same type of DCs, in the presence of alloreactive T cells.

To understand more about the mechanism for iTreg suppression of IL-12 release from DCs, we tested blocking antibodies to several components that are required for different aspects of iTreg formation and function [12, 15, 17]. The antibodies were added to co-cultures of Balb/c DC, anti Balb/c specific iTreg, and B6 MLR responsive T cells, along with CL075. Anti-MHC class II mAbs (N22) abrogated the iTreg effect on IL-12 production, whereas the control hamster Ig isotype did not (S6 Fig upper panel). In contrast, blockade of TGF β (S6 Fig, right lower panel) and blockade of CTLA4 (S6 Fig, left lower panel) or LFA-1 (data not shown), did not restore IL-12 release into the culture medium. Thus, the capacity of iTreg to block IL-12 release from DC is dependent on MHC II.

To assess if the down-regulation of IL-12 reflects increased dendritic cell death, as recently reported in an in vivo model [20], we stained cultures of DCs and T cells incubated with or without iTreg for viability. As shown in S7A Fig, co-incubation with iTreg decreased the number of live DCs by 30%. This reduction may explain the modest decrease in TNF α and IL-6 that we observed (S4 Fig), but seems unlikely to explain the almost 10 fold reduction in IL-12 secreted by DCs (Fig 1B).

To determine if the reduction in IL-12 measured from DC culture was due to suppression of its synthesis, we looked directly at IL-12 transcription and intracellular IL-12. S7B and S7C Fig demonstrate minimal changes in levels of IL-12 p40 mRNA and protein in the DCs. Thus, to our surprise, the ability of iTreg to suppress IL-12 release is not likely due to the toxicity or reduced IL-12 synthesis by DCs per se.

Given the above findings we searched for a new IL-12 control mechanism, whereby IL-12 would be consumed as a result of DC-iTreg interaction. We first added 800 pg/ml IL-12 to a co-culture of DCs with either naïve CD4⁺ cells or iTreg in the absence of CL075 stimulation. This is the concentration reliably secreted by DCs in our culture system stimulated by CL075 (Fig 1B). Addition of this amount of IL-12 to co-cultures of DCs and CD4⁺ T cells was followed by a 3-fold reduction in IL-12 levels (201 pg/ml and 617 pg/ml with or without a co-culture of DCs and CD4⁺ T cells, respectively). However, addition of IL-12 to a co-culture of DCs and iTreg cells resulted in a 12-fold reduction in IL-12 levels (50 pg/ml and 617 pg/ml with or without a co-culture of DCs and iTreg cells, respectively). This 12-fold reduction required the presence of both DCs and iTreg cells (Fig 1D), while each cell type alone resulted in either mild or no reduction in the level of IL-12 (450 pg/ml and 647 pg/ml, respectively). To further support the notion of IL-12 consumption by iTreg cells we wanted to evaluate the time course of removal of the added IL-12 from the media. The time required for IL-12 consumption was relatively short, as a two fold reduction was achieved within 0.5–3 hrs of co-incubation of DCs and iTreg cells in the IL-12 added media, and a maximum reduction of 10–12 fold after 12–24 hrs (Fig 1E). A rough estimate of IL-12 consumed per cell was 0.0005 pg IL-12 per cell in 12 hrs or ~6 molecules/min/cell [(800 pg/ml - 50pg/ml) x 0.2 ml /300,000 cells = 0.0005 pg/cell]. On the

other hand, iTreg cells alone or co-incubated with DCs did not reduce TNF α when added to the medium (S8 Fig). The fact that the IL-12 level continues gradually and consistently to drop over time to almost complete removal (Fig 1E), rules out the possibility of saturation of IL-12 binding, in which we would expect a “plateau effect” after an initial steep non-gradual decline. However, the continued drop in IL-12 concentration support a possible mechanism of receptor uptake and recycle.

IL-12 Consumption Is Mediated by Treg IL-12R β 2 and Dependent on DC MHC-Class-II

To test the possibility that IL-12 consumption was mediated by binding to IL-12R on the iTreg cells, we compared iTreg and naïve CD4⁺ cells for IL-12R β 1 and β 2 mRNA expression by RT-PCR. As shown in Fig 2A, iTreg cells sorted and analyzed immediately after their induction had higher levels of IL-12R β 1 and even more IL-12R β 2 compared to naïve CD4⁺ cells. To pinpoint the IL-12R expressing cells, we sorted iTreg that were co-cultured overnight either alone or with DCs, and compared their IL-12R expression to that of iTreg immediately after their induction. When iTreg were incubated alone overnight, expression of mRNA was greatly reduced for both IL-12R subunits, whereas iTreg cultured with DCs retained IL-12R mRNA (Fig 2B). To prove that IL-12R β 2 was responsible for IL-12 consumption, we compared iTreg from IL-12R β 2 KO mice (Foxp3 IRES RFP (FIR) knock-in crossed with IL-12R β 2 KO) to WT-iTreg. Indeed, the IL-12R β 2 KO-iTreg were unable to consume IL-12 (Fig 2C) whereas DCs from IL-12R β 2 KO mice incubated with WT iTreg were fully capable of inducing iTreg to consume IL-12 (Fig 2D), ruling out the possibility that IL-12 was consumed by DCs.

To verify whether IL-12 consumption was dependent on an interaction with MHC class-II, WT iTreg were incubated with DCs from MHC-class-II-KO mice. Lack of MHC-II on DCs abrogated the consumption of IL-12 achieved by iTreg incubated with WT-DCs (Fig 2E). Taken together, these results demonstrate that MHC-II expression on DCs and IL-12R β 2 expression on iTreg are essential for the IL-12 consumption mechanism by iTreg.

We next tested if DCs can induce naturally occurring Treg (nTreg) to consume IL-12. To this end, we added IL-12 to a co-culture of Balb/c DCs with either freshly isolated CD4⁺CD25⁺Foxp3⁺nTreg, or nTreg that were sorted after activation and expansion with allogeneic DCs in an MLR system as described [11]. We found that during the MLR, DC-activated but not freshly isolated nTreg consumed IL-12 (Fig 2F), and much like DC-induced iTreg the nTreg also up-regulated IL-12R β 2 (Fig 2G).

IL-12R β 2 Expressed on Authentic Treg Contribute to the Control of Th1 Response by Effector T Cells while Mediating IFN γ Secretion in a Stat4 Dependent Manner

To determine the importance of IL-12 consumption on the immune response, we added IL-12 (1000 pg/ml) to cultures of allo DCs (Balb/c) and CD4⁺ T cells (B6). In the absence of IL-12, iTreg suppressed the MLR in a dose dependent manner (S9A Fig). Since IL-12 was shown to increase T cell proliferation [21, 22], we expected a reduced suppression of pre-activated/effector T cell proliferation by iTreg in the presence of IL-12. However, the addition of IL-12 surprisingly enhanced the inhibitory effect of the iTreg (S9A Fig upper and lower panel). Further, this enhanced suppressive effect of iTreg in the presence of IL-12 was IL-12R β 2 dependent. Indeed, WT iTreg suppressed T cell proliferation (S9B Fig) and IFN γ secretion (Fig 3A) from effector CD4⁺ cells several fold greater (2–3 and 3.5–5, respectively) than IL-12R β 2 KO Treg. Moreover, the suppressive effect of WT iTreg (IL-12R β 2 expressing) in the presence of IL-12 on the total number of IFN γ effector CD4⁺ secreting cells was 2-fold greater than the effect on

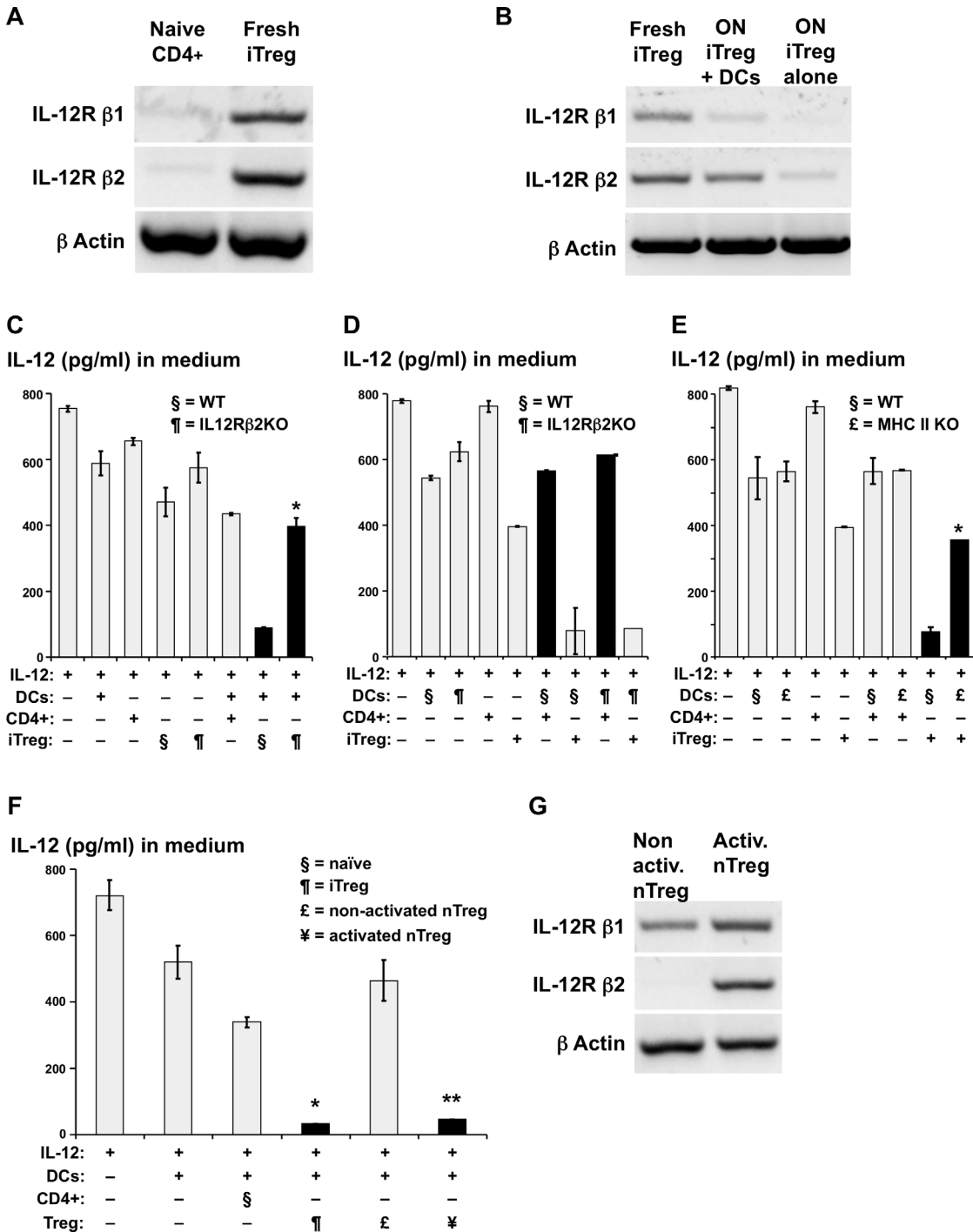


Fig 2. IL-12 consumption is mediated by Treg IL-12R β 2 and dependent on DC MHC-Class-II. (A) RNA was isolated from either sorted naive CD4+ T cells (CD4⁺CD25⁻Foxp3⁻) or fresh iTreg (CD4⁺CD25⁺Foxp3⁺). Synthesized cDNA of IL-12R β 1, β 2 and β Actin was amplified with PCR. The Agarose gel electrophoresis of the PCR products is shown. (B) As in A, but compared are PCR products from either fresh sorted iTreg, iTreg that were incubated overnight (ON) with Balb/c DCs or iTreg that were incubated overnight alone. (C) As in Fig 1D but a culture of DCs and either WT or IL-12R β 2 KO iTreg (both induced with Balb/c DCs from CD4⁺CD25⁻Foxp3⁻ cells as described before) was added to the medium containing IL-12. (* = compared to co-culture WT iTreg and DCs in a medium of IL-12). (D) As in C but a culture of iTreg and either WT or IL-12R β 2 KO Balb/c DCs was added to the medium containing IL-12. (E) As in C but a culture of iTreg and either WT or MHC class-II KO DCs was added to the medium containing IL-12. (* = compared to co-culture of iTreg and WT DCs in a medium of IL-12). (F) As in C but a culture of DCs and either fresh sorted non activated nTreg (CD4⁺CD25⁻Foxp3⁻) or nTreg that were sorted after activation in co-culture with allo-Balb/c DC were added to a medium with IL-12. (* = compared to medium with IL-12, ** = compared to co-culture of DCs and non-activated nTreg in medium with IL-12). (G) As in A, but non-activated to activated nTreg are compared. One representative experiment of three is shown. Error bars denote mean \pm SD. *, ** = P < 0.05.

doi:10.1371/journal.pone.0146412.g002

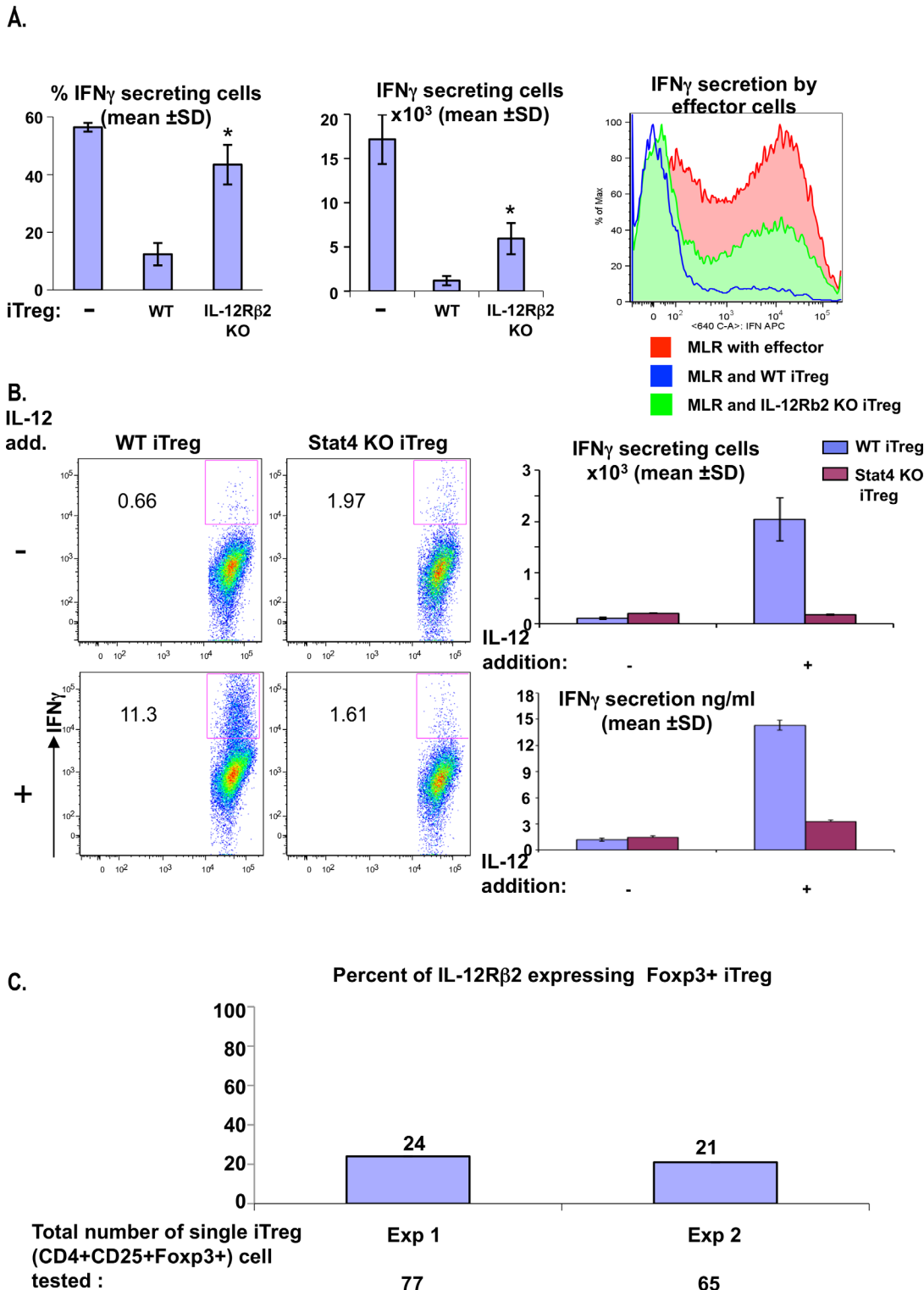


Fig 3. IL-12Rβ2 expressed on authentic Treg contribute to the control of Th1 response in a Stat4 dependent manner. (A) MLR culture of Balb/c DCs and sorted CFSE labeled effector CD4⁺CD25⁺Foxp3⁺ cells (following naïve CD4⁺CD25⁻ pre-activation with Balb/c DCs for 3 days) was incubated with IL-12 (1000 pg/ml) alone or with either WT or IL-12Rβ2 KO iTReg cells for 24 hrs, and the culture was stained and analyzed for IFNγ secreting cells by FACS. Error bars denote mean ± SD. * = P < 0.05 (compared to WT) (B) Balb/c DCs were cultured with either WT or Stat4 KO sorted anti Balb/c iTReg. The culture was either stimulated (left lower panels) or not stimulated (left upper panels) with IL-12, and 24 hrs later stained and analyzed (left panel) for IFNγ expressing Treg cells (CD4⁺CD25⁺Foxp3⁺(RFP⁺) by FACS (absolute number in right upper panel), and for IFNγ secreted to the medium by ELISA (right lower panel). (C)

WT CD4⁺CD25⁻Foxp3⁻(RFP⁻) were sorted, co-cultured with Balb/c DCs in the presence of TGF β and ATRA. After 5 d CD4⁺CD25⁺Foxp3⁺(RFP⁺) cells were sorted and re-cultured with Balb/c DCs for re-stimulation. After 18 hr CD4⁺CD25⁺Foxp3⁺(RFP⁺) cells were re-sorted as a single cell per well. Each single cell was subjected to cDNA synthesis followed by nested PCR for the detection of Foxp3 and IL-12R β 2 gene expression. The percent values for IL-12R β 2 RNA expressing iTreg cells amongst the Foxp3 RNA expressing iTreg cells, respectively from 2 independent experiments, are indicated above each histogram.

doi:10.1371/journal.pone.0146412.g003

the total number of proliferating cells [\sim 10-fold (Fig 3A middle) versus \sim 5-fold (S9B Fig middle) reduction, respectively, compared to MLR with effector CD4⁺ cells]. These results support a direct effect of Treg on effector Th1 response and IFN γ secretion beyond and possibly independent of the suppression of effector CD4⁺ proliferation. Together, these results may suggest that IL-12, a cytokine with effector immuno-stimulatory properties, gains suppressive function in the presence of IL12R β 2-expressing iTreg. Our results may also explain cases in which single-nucleotide polymorphisms (SNPs) in IL-12, IL-12R β 2, and Stat-4 were shown to increase the risk for diseases such as primary biliary cirrhosis [23], in which Treg, and IL-12 are part of the pathogenesis. This may raise the possibility that the presence of the same SNPs on IL-12R β 2 on iTreg abrogate their suppressive function.

IL-12 addition to a culture of nTreg cells was shown to induce IFN γ secretion through an unclear pathway [24, 25]. To verify that iTreg (induced with DCs in MLR) can secrete IFN γ , and to explore whether IFN γ secretion by iTreg is mediated via IL-12R expression, we studied the stimulatory effect of this receptor on cytokine secretion by iTreg. As was shown recently with nTreg [26], here we demonstrate that addition of IL-12 to a culture of DCs and allospecific iTreg, induced marked up-regulation in IFN γ secretion from WT iTreg but not from IL-12R β 2 KO iTreg cells (S10 Fig). Stat4 and T-bet act independently and synergistically to drive expression of the signature inflammatory cytokine IFN- γ [27, 28]. While it was demonstrated that Tbet⁺ nTreg undergo abortive Th1 cell differentiation due to the impaired expression of IL-12 receptor β 2 [29], here we demonstrate that the IFN γ secretion from iTreg was dependent on the transcription factor Stat-4 (Fig 3B) which resides downstream of the IL-12R signaling pathway.

At this point we wanted to verify that the IL-12R β 2-expressing cells are authentic Tregs and not ex-Foxp3 effector T cells [30]. In the absence of a reliable antibody against IL-12R β 2, a culture of WT iTreg cells incubated with DCs, were sorted for CD4⁺CD25⁺Foxp3⁺ (RFP⁺) single cells. By analyzing single cells for the concomitant expression of IL-12R β 2 and Foxp3 mRNA, we could define a relatively abundant subpopulation (20–25%) of IL-12R β 2 expressing Foxp3⁺ iTreg cells in WT mice (Fig 3C).

Recent studies have shown that Foxp3⁺ Treg cells can functionally differentiate to acquire the ability to specifically control Th1, Th2 or Th17 type inflammatory responses of certain T helper types by modifying their expression of related transcription factors [31–33]. For example, Treg that acquired T-bet expression have been shown to control Th1 responses, though by a yet an unknown mechanism [31]. Here we show that a subpopulation of iTreg cells acquire the expression of IL-12R thereby contributing to the regulation of Th1 responses. Interestingly, this subpopulation of Treg cells uses the same receptor as effector Th1 cells in order to suppress Th1 responses. Simultaneously, the effector Th1-suppressive iTreg secrete IFN γ (in a Stat4 dependent manner), a cytokine, that when secreted from Treg, was shown recently to be suppressive in the context of graft versus host disease (GVHD) and transplant rejection [26, 34]. More specifically, Koenecke et al [26] have shown that only IFN γ -expressing and not IFN γ -deficient Treg could suppress GVHD. Taken together, IFN γ produced by iTreg is dependent on the IL-12/IL-12R β 2/Stat4 pathway, and may further add to the suppression achieved by the IL-12R β 2.

In summary, we describe here a new pathway whereby DCs induce the expression of IL-12R on a subpopulation of Treg cells, in an MHC class II dependent manner. This novel mechanism contributes to the regulation of Th1 effector response by iTreg through the consumption of IL-12, which in this milieu becomes a cytokine with an immunosuppressive outcome. These DC-induced IL-12R β 2-expressing Treg cells may have a significant therapeutic advantage in Th1 mediated autoimmunity.

Material and Methods

Mice

6–8-wk-old female Balb/c H-2^d, C57BL/6 CD45.1 H-2^b, and SJL H-2^s mice are from Taconic. MHC class-II, IL-12R β 2 knock-out, IL-12b (p40)-IRES-eGFP knock-in mice are from Jackson laboratories. Foxp3⁺IRES⁺RFP (FIR) knock-in mice were a gift from R. Flavell (Yale University, New Haven, CT; [35]) and were crossed with IL-12R β 2 knock-out mice (Jackson lab) for studying IL-12R β 2 knock-out CD4⁺Foxp3⁺(RFP⁺) cells. Stat-4 knock-out mice (Jackson lab) were crossed with Foxp3⁺GFP knock-in mice (Jackson lab) for studying Stat-4 KO CD4⁺Foxp3⁺(GFP⁺). Mice housing and husbandary was in Rockefeller University animal facility, with regular diet and caging. The study was approved by institutional animal care and use committee of the Rockefeller University, and we followed its guidelines. All experiments were done *ex vivo* after euthanasia with CO₂ according to the guidelines of our institute.

Antibodies and Reagents

All following conjugated Abs are from BD: APC conjugated anti-mouse CD25, -CD4, -CD45.1, -CD11c, -IL-12p70; Alexa Fluor 700-conjugated anti-CD3, -CD4, and -CD11c; PE-conjugated anti-CD3, -CD19, and -CD49b; FITC-conjugated anti-CD3, -CD19, -CD49b, and isotype control; biotin anti-CD4, -CD8, -DX5, -B220, -CD3, -CD11b, -Ly-6G, and -Ter119; and purified anti-CD16/CD32 (2.4G2). CD11c and streptavidin beads (SA) from Miltenyi Biotec; CFSE, live dead fixable aqua, CL075, and LPS from Invitrogen; ATRA from Sigma-Aldrich; hTGF- β 1, anti-mouse TGF- β (1D11), anti-CTLA4, and Ig isotype control from R&D Systems.

T Cells and DCs

Non-CD4⁺ lymph node and spleen T cells were removed by MACS beads (Miltenyi Biotec) after coating with biotin anti-CD8 α , DX5, B220, CD3, CD11b, Ly-6G, and Ter119. Cells were further purified with a FACSAria 2 sorter (BD) to >97%. Spleen CD11c⁺ DCs were partially enriched with anti-CD11c beads (Miltenyi Biotec) and, where indicated, purified with a FACSAria 2 (BD) cell sorter as CD11c^{high}CD19⁻CD3⁻DX5⁻ DCs (>95%).

De Novo In Vitro Induction of T Reg Cells in the Allo-MLR

CD4⁺ T cells from C57BL/6 Foxp3⁻ RFP mice were sorted as CD4⁺CD25⁻RFP⁻ cells. T cells were then co-cultured for 5 d with fresh splenic Balb/c DCs, TGF β and ATRA as described [11]. Induction of CD4⁺CD25⁺RFP⁺ cells was analyzed by FACS (LSR-II; BD) and FlowJo software (Tree Star) and sorted (FACSAria 2).

In Vitro IL-12 Induction, Suppression, Consumption and Measurement

DCs from either Balb/c, C57BL/6 or SJL mice were incubated for 24 hrs with either CL075 (1 μ g/ml), or LPS (5 μ g/ml) alone or together with CD4⁺ T cells. Treg cells were added to the culture for additional 24 hrs in various ratios. IL-12 p70 concentration in the supernatant was measured with ELISA (eBioscience). Intracellular staining for IL-12p70 in DCs or T cells was

analyzed by FACS (LSR-II; BD). For consumption assay, DCs, T cells, Treg cells co-incubated or incubated alone for 24 hrs, were cultured with IL-12p70 (eBioscience) and concentration of IL-12p70 remained in the medium was measured by ELISA.

In Vitro Suppression of T Cell Proliferation and IFN γ Secretion

Effector/activated CD45.1⁺ CD4⁺ CD25⁺ Foxp3⁻ cells were induced from naïve CD4⁺ CD25⁻ in primary MLR co-culture with Balb/c DCs and then sorted, labeled with CFSE and co-cultured with iT reg cells in round-bottom 96-well plates at the indicated ratios plus allo-DCs (ratio of 1 DC to 3 CD45.1⁺ CD4⁺ T cells). After 3 d, proliferation and intracellular IFN γ were assessed by FACS (LSR-II; BD) to determine CFSE diluted, live CD45.1⁺ T cells.

RTPCR for IL-12R β 1, β 2 and IL-12b

We used the Qiagen kit for RNA isolation from sorted Treg or DCs. SuperScript[®] Reverse Transcriptase (Invitrogen) was used to synthesize cDNA, from which IL-12R β 1, β 2 and IL-12b were amplified with PCR. An agarose gel electrophoresis of the PCR products was performed.

Single Cell Sort and Analysis

CD4⁺CD25⁺Foxp3⁺(RFP⁺) cells were sorted from a co-culture of WT iTreg and allo-DCs into 96-well PCR plates (Eppendorf) containing 4 μ l/well of ice-cold 0.5 \times PBS supplemented with 10 mM DTT, 8U RNasin (Promega), and 3U RNase Inhibitor (5Prime). cDNA was synthesized as described [36], and nested PCR for IL-12R β 2 and Foxp3 cDNA was performed.

The following primers were used to amplify gene-specific cDNA fragments from the single cells: IL-12R β 2 outer-down, 5'-CCC TTG GTA TGA CCT TGT TTG TCT GCA AGC-3'; IL-12R β 2 outer-up, 5'-GAT CCA GGC GAT TGC AAT TCT GAC GAT TGT CA-3'; IL-12R β 2 inner-down, 5'-AAA AGA AGC CAC CAG TCC CAG TAT G-3'; IL-12R β 2 inner-up, 5'-CTG ACA GGT CAG ATT GTT TGG TCC A-3'; Foxp3 outer-down, 5'-TTC CAA GGT CGG GAC CTG CGA AGT GGG G-3'; Foxp3 outer-up, 5'-GCA GAA GGT GGT GGG AGG CTG ATC ATG GCT-3'; Foxp3 inner-down, 5'-ACA CCT CTT CTT CCT TGA ACC CCC TG-3'; Foxp3 inner-up, 5'-TCC AGT GGA CGC ACT TGG AGC ACA-3'.

Statistical data were analyzed using Student's *t* test.

Supporting Information

S1 Fig. DCs generate *de-novo* CD4⁺ CD25⁺ Foxp3⁺ (RFP⁺) from a polyclonal T cell repertoire in the mixed leukocyte reaction (MLR). Sorted C57Bl/6 CD4⁺ CD25⁻ Foxp3⁻(RFP⁻) spleen cells were labeled with CFSE and cultured 5 d with Balb/c splenic CD11c⁺ DCs without (left panel) or with (right panel) TGF β (20 ng/ml) and ATRA (10nM). Shown is the frequency of induced CD4⁺ CD25⁺ Foxp3⁺ (RFP⁺) iTreg by FACS analysis on d5. One representative experiment of three is shown. Adapted from "Dendritic cells induce antigen-specific regulatory T cells that prevent graft versus host disease and persist in mice". By Sela U et al, *J. Exp. Med.* 208:2489–2496.

(TIF)

S2 Fig. DC induced Treg have mild effect on TNF α secreted from DC. Balb/c DCs were incubated (24hr) either alone or with various ratio of C57Bl/6 iTreg that were induced with Balb/c DCs (iTreg anti Balb). Then the culture was added with CL075 (1 mg/ml) and 24 hr later level of TNF α secreted to the medium was measured with ELISA. One representative experiment of three is shown. Error bars denote mean \pm SD. *, *P* < 0.05.

(TIF)

S3 Fig. The main source for IL-12 in the MLR culture are DCs. Balb/c DCs or C57Bl/6 CD4⁺ T cells were cultured alone or together (MLR) and incubated alone or co-incubated with CL075 (24 hr). Level of IL-12p70 secreted to the medium was measured by ELISA (left panel) or the culture was stained, and analyzed by FACS for IL-12 positive T (CD3⁺CD4⁺) or dendritic (CD11c⁺) cells. One representative experiment of three is shown. Error bars denote mean \pm SD. * = comparing CL075 induced to non-induced DCs, $P < 0.05$, ** = comparing CL075 induced to non-induced co-culture of DCs and CD4⁺ T cells. $P < 0.05$. (TIF)

S4 Fig. DC induced Treg have mild effect on TNF α and IL-6 secreted from MLR of CD4⁺ T cells and DCs. MLR of Balb/c DCs and C57Bl/6 CD4⁺ T cells were incubated (24hr) either alone or with various ratio of C57Bl/6 iTreg that were induced with Balb/c DCs (iTreg anti Balb). Then, CL075 (left panel) or LPS (5 mg/ml, right panel) were added to the culture, and 24 hr later level of TNF α (left panel) or IL-6 (right panel) secreted to the medium was measured by ELISA. One representative experiment of three is shown. Error bars denote mean \pm SD. *, $P < 0.05$. (TIF)

S5 Fig. DC induced Treg specifically down-regulate IL-12 secreted from allo-DCs. Balb/c, C57Bl/6, or F1 (Balb/c X B6) DCs were incubated (24hr) either alone, with C57Bl/6 CD4⁺ T cells or with C57Bl/6 CD4⁺ T cells together with various ratio of C57Bl/6 iTreg that were induced with Balb/c DCs (iTreg anti Balb). Then CL075 was added to the culture, and 24 hr later level of IL-12 secreted to the medium was compared by ELISA. One representative experiment of three is shown. Error bars denote mean \pm SD. *, $P < 0.05$ (comparing to DC+T+CL0 without iTreg). (TIF)

S6 Fig. iTreg down-regulate CL075 induced IL-12 secreted from DCs in MHC class-II dependent manner. Balb/c DCs were incubated (24hr) either alone, with C57Bl/6 CD4⁺ T cells or with C57Bl/6 CD4⁺ T cells and C57Bl/6 iTreg at 1 to 1 ratio. Either anti-MHC-class II (upper panel), anti-CTLA-4 (left lower panel), or anti-TGF β (right lower panel) mAbs (10mg/ml) or their isotype control (IC) were added or not to the culture containing the iTreg cells. Then the culture was added with CL075 and 24 hr later level of IL-12 secreted to the medium was compared with ELISA. One representative experiment of three is shown. Error bars denote mean \pm SD. *, $P < 0.05$ (compared to IC). (TIF)

S7 Fig. The down-regulation of IL-12 secreted from DCs by iTreg is not due to marked DC death nor inhibition of its production. (A) Co-culture of DCs and CD4⁺ T cells were incubated either alone or co-incubated with iTreg cells for 36 hrs after which the culture was stained for viability (aqua) and compared by FACS for live CD11c⁺ cells. (B) As in A, but the cultured DCs (CD11c⁺) were sorted, and RNA was isolated. A gel of PCR products of IL-12p40 cDNA is shown. (C) As in A, but DCs are from IL-12 p40 reporter C57Bl/6 mice, and the culture was stimulated with CL075 and analyzed by FACS for IL-12 expressing DCs (CD11c⁺). One representative experiment of three is shown. (TIF)

S8 Fig. DC induced Treg cells have minor effect on consumption of TNF α from the medium. TNF α (1000pg/ml) in culture medium was incubated alone or with either DCs, CD4⁺ T cells, or iTreg alone or with a co-culture of DCs and either CD4⁺ or anti Balb iTreg. After 48hrs level of TNF α that remained in the medium was measured by ELISA. One

representative experiment of three is shown.
(TIF)

S9 Fig. IL-12 enhances suppression of T cell proliferation by iTreg. (A) MLR culture of Balb/c DCs and sorted CFSE labeled effector CD4⁺CD25⁺Foxp3⁻ cells (following naïve CD4⁺CD25⁻ pre-activation with Balb/c DCs for 3 days) was incubated without or with IL-12 (1000 pg/ml) or various concentration of WT iTreg cells for 3 days and analyzed by FACS. Absolute number (upper panel) of effector proliferating cells and their percent (lower panel) out of the MLR (considered as 100%) are shown. (B) As in A, but the MLR culture was added by either WT or IL-12R β 2 KO iTreg cells. Absolute number (middle panel), percent of effector proliferating cells (left panel) and FACS histogram of CFSE dilution (right panel), are shown. One representative experiment of three is shown. Error bars denote mean \pm SD. *, $P < 0.05$ (compared to WT iTreg).
(TIF)

S10 Fig. IL-12R β 2 mediates IL-12 induced IFN γ secretion from iTreg. Balb/c DCs were cultured with either WT or IL-12R β 2 KO sorted anti Balb/c iTreg. The culture was either stimulated (left lower panels) or not stimulated (left upper panels) with IL-12, and 24 hrs later stained and analyzed (left panel) for IFN γ expressing Treg cells (CD4⁺CD25⁺Foxp3⁺(RFP⁺)) by FACS (absolute number in right upper panel), and for IFN γ secreted to the medium by ELISA (right lower panel). One representative experiment of three is shown.
(TIF)

Acknowledgments

The authors are grateful to the Flow Cytometry Resource Center staff, headed by Svetlana Mazel, to Klara Velinzon and Yelena Shatalina for help with cell sorting, to Anthony Rodriguez for help with experiments, to Daniel Mucida for advice, and to Judy Adams for help with the figures.

The authors declare no financial interests.

Author Contributions

Conceived and designed the experiments: US RMS. Performed the experiments: US CGP AP PO SW. Analyzed the data: US CGP RMS. Contributed reagents/materials/analysis tools: CGP VAF. Wrote the paper: US RMS VAF.

References

1. Macatonia S.E., Hosken N.A., Litton M., Vieira P., Hsieh C.S., Culpepper J.A., et al. 1995. Dendritic cells produce IL-12 and direct the development of Th1 cells from naive CD4⁺ T cells. *J. Immunol.* 154:5071–5079. PMID: [7730613](#)
2. Heufler C., Koch F., Stanzl U., Topar G., Wyszocka M., Trinchieri G., et al. 1996. Interleukin-12 is produced by dendritic cells and mediates T helper 1 development as well as interferon- γ production by T helper 1 cells. *Eur. J. Immunol.* 26:659–668. PMID: [8605935](#)
3. Coquerelle C., and Moser M. 2010. DC subsets in positive and negative regulation of immunity. *Immunol. Rev.* 234:317–334. doi: [10.1111/j.0105-2896.2009.00887.x](#) PMID: [20193028](#)
4. Zhou L., Chong M.M., and Littman D.R. 2009. Plasticity of CD4⁺ T cell lineage differentiation. *Immunol.* 30:646–655.
5. Zhu J., Yamane H., and Paul W.E. 2010. Differentiation of effector CD4 T cell populations (*). *Ann. Rev. Immunol.* 28:445–489.
6. Abbas A.K., Murphy K.M., and Sher A. 1996. Functional diversity of helper T lymphocytes. *Nature* 383:787–793. PMID: [8893001](#)

7. Bettelli E., Oukka M., and Kuchroo V.K. 2007. T^H-17 cells in the circle of immunity and autoimmunity. *Nat. Immunol.* 8:345–350. PMID: [17375096](#)
8. Weaver C.T., Hatton R.D., Mangan P.R., and Harrington L.E. 2007. IL-17 family cytokines and the expanding diversity of effector T cell lineages. *Annu. Rev. Immunol.* 25:821–852. PMID: [17201677](#)
9. Coombes J.L., Siddiqui K.R., Arancibia-Carcamo C.V., Hall J., Sun C.M., Belkaid Y., et al. 2007. A functionally specialized population of mucosal CD103⁺ DCs induces Foxp3⁺ regulatory T cells via a TGF-β- and retinoic acid-dependent mechanism. *J. Exp. Med.* 204:1757–1764. PMID: [17620361](#)
10. Mucida D., Park Y., Kim G., Turovskaya O., Scott I., Kronenberg M., et al. 2007. Reciprocal T_H17 and regulatory T cell differentiation mediated by retinoic acid. *Science* 317:256–260. PMID: [17569825](#)
11. Sela U., Olds P., Park A., Schlesinger S.J., and Steinman R.M. 2011. Dendritic cells induce antigen-specific regulatory T cells that prevent graft versus host disease and persist in mice. *J. Exp. Med.* 208:2489–2496. doi: [10.1084/jem.20110466](#) PMID: [22084406](#)
12. Tang Q., and Bluestone J.A. 2008. The Foxp3⁺ regulatory T cell: a jack of all trades, master of regulation. *Nat. Immunol.* 9:239–244. doi: [10.1038/ni1572](#) PMID: [18285775](#)
13. Shevach E.M. 2009. Mechanisms of foxp3+ T regulatory cell-mediated suppression. *Immunity* 30:636–645. doi: [10.1016/j.immuni.2009.04.010](#) PMID: [19464986](#)
14. Dipaolo R.J., Brinster C., Davidson T.S., Andersson J., Glass D., and Shevach E.M. 2007. Autoantigen-specific TGFβ-induced Foxp3+ regulatory T cells prevent autoimmunity by inhibiting dendritic cells from activating autoreactive T cells. *J. Immunol.* 179:4685–4693. PMID: [17878367](#)
15. Tran D.Q., Glass D.D., Uzel G., Darnell D.A., Spalding C., Holland S.M., et al. 2009. Analysis of adhesion molecules, target cells, and role of IL-2 in human FOXP3⁺ regulatory T cell suppressor function. *J. Immunol.* 182:2929–2938. doi: [10.4049/jimmunol.0803827](#) PMID: [19234188](#)
16. Grohmann U., Orabona C., Fallarino F., Vacca C., Calcinaro F., Falorni A., et al. 2002. CTLA-4-Ig regulates tryptophan catabolism in vivo. *Nat. Immunol.* 3:1097–1101. PMID: [12368911](#)
17. Wing K., Onishi Y., Prieto-Martin P., Yamaguchi T., Miyara M., Fehervari Z., et al. 2008. CTLA-4 control over Foxp3+ regulatory T cell function. *Science* 322:271–275. doi: [10.1126/science.1160062](#) PMID: [18845758](#)
18. Wing K., and Sakaguchi S. 2010. Regulatory T cells exert checks and balances on self tolerance and autoimmunity. *Nat. Immunol.* 11:7–13. doi: [10.1038/ni.1818](#) PMID: [20016504](#)
19. Shevach E.M., Thornton A.M. 2014. iTregs, pTregs, and iTregs: similarities and differences. *Immunol Rev.* 259(1):88–102. doi: [10.1111/immr.12160](#) PMID: [24712461](#)
20. Boissonnas A., Scholer-Dahirel A., Simon-Blancal V., Pace L., Valet F., Kissenpfennig A., et al. 2010. Foxp3⁺ T cells induce perforin-dependent dendritic cell death in tumor-draining lymph nodes. *Immunity* 32:266–278. doi: [10.1016/j.immuni.2009.11.015](#) PMID: [20137985](#)
21. Murphy E.E., Terres G., Macatonia S.E., Hsieh C.S., Mattson J., Lanier L., et al. 1994. B7 and interleukin 12 cooperate for proliferation and interferon gamma production by mouse T helper clones that are unresponsive to B7 costimulation. *J. Exp. Med.* 180:223–231. PMID: [7516409](#)
22. Bertagnolli M.M., Lin B.Y., Young D., and Herrmann S.H. 1992. IL-12 augments antigen-dependent proliferation of activated T lymphocytes. *J. Immunol.* 149:3778–3783. PMID: [1360994](#)
23. Hirschfield G.M., Liu X., Xu C., Lu Y., Xie G., Gu X., et al. 2009. Primary biliary cirrhosis associated with HLA, IL12A, and IL12RB2 variants. *N. Engl. J. Med.* 360:2544–2555. doi: [10.1056/NEJMoa0810440](#) PMID: [19458352](#)
24. Oldenhove G., Bouladoux N., Wohlfert E.A., Hall J.A., Chou D., Dos Santos L., et al. 2009. Decrease of Foxp3⁺ Treg cell number and acquisition of effector cell phenotype during lethal infection. *Immunity* 31:772–786. doi: [10.1016/j.immuni.2009.10.001](#) PMID: [19896394](#)
25. Dominguez-Villar M., Baecher-Allan C.M., and Hafler D.A. 2011. Identification of T helper type 1-like, Foxp3+ regulatory T cells in human autoimmune disease. *Nat. Med.* 17:673–675. doi: [10.1038/nm.2389](#) PMID: [21540856](#)
26. Koenecke C., Lee C.W., Thamm K., Föhse L., Schafferus M., Mittrücker H.W., et al. 2012. IFN-γ production by allogeneic Foxp3+ regulatory T cells is essential for preventing experimental graft-versus-host disease. *J. Immunol.* 189(6):2890–6 doi: [10.4049/jimmunol.1200413](#) PMID: [22869903](#)
27. Thieu V.T., Yu Q., Chang H.C., Yeh N., Nguyen E.T., Sehra S., et al. 2008. Signal transducer and activator of transcription 4 is required for the transcription factor T-bet to promote T helper 1 cell fate determination. *Immunity.*; 29:679–690. doi: [10.1016/j.immuni.2008.08.017](#) PMID: [18993086](#)
28. Wei L., Vahedi G., Sun H.W., Watford W.T., Takatori H., Ramos H.L., et al. 2010. Discrete roles of STAT4 and STAT6 transcription factors in tuning epigenetic modifications and transcription during T helper cell differentiation. *Immunity.*; 32:840–851. doi: [10.1016/j.immuni.2010.06.003](#) PMID: [20620946](#)

29. Koch M.A., Thomas K.R., Perdue N.R., Smigiel K.S., Srivastava S., Campbell D.J. 2012. T-bet(+) Treg cells undergo abortive Th1 cell differentiation due to impaired expression of IL-12 receptor β 2. *Immunity*. 37(3):501–10. doi: [10.1016/j.immuni.2012.05.031](https://doi.org/10.1016/j.immuni.2012.05.031) PMID: [22960221](https://pubmed.ncbi.nlm.nih.gov/22960221/)
30. Zhou X., Bailey-Bucktrout S.L., Jeker L.T., Penaranda C., Martinez-Llordella M., Ashby M., et al. 2009. Instability of the transcription factor Foxp3 leads to the generation of pathogenic memory T cells in vivo. *Nature immunology* 10:1000–1007. doi: [10.1038/ni.1774](https://doi.org/10.1038/ni.1774) PMID: [19633673](https://pubmed.ncbi.nlm.nih.gov/19633673/)
31. Koch M.A., Tucker-Heard G., Perdue N.R., Killebrew J.R., Urdahl K.B., and Campbell D.J. 2009. The transcription factor T-bet controls regulatory T cell homeostasis and function during type 1 inflammation. *Nat. Immunol.* 10:595–602. doi: [10.1038/ni.1731](https://doi.org/10.1038/ni.1731) PMID: [19412181](https://pubmed.ncbi.nlm.nih.gov/19412181/)
32. Zheng Y., Chaudhry A., Kas A., deRoos P., Kim J.M., Chu T.T., et al. 2009. Regulatory T-cell suppressor program co-opts transcription factor IRF4 to control T(H)2 responses. *Nature* 458:351–356. doi: [10.1038/nature07674](https://doi.org/10.1038/nature07674) PMID: [19182775](https://pubmed.ncbi.nlm.nih.gov/19182775/)
33. Chaudhry A., Rudra D., Treuting P., Samstein R.M., Liang Y., Kas A., et al. 2009. CD4⁺ regulatory T cells control T_H17 responses in a stat3-dependent manner. *Science* 326.
34. Verma N.D., Hall BM, Plain K.M., Robinson C.M., Boyd R., Tran G.T., et al. 2014. Interleukin-12 (IL-12p70) Promotes Induction of Highly Potent Th1-Like CD4(+)CD25(+) T Regulatory Cells That Inhibit Allograft Rejection in Unmodified Recipients. *Front Immunol.* 9;5:190
35. Wan Y.Y., and Flavell R.A. 2005. Identifying Foxp3-expressing suppressor T cells with a bicistronic reporter. *Proc. Natl. Acad. Sci. USA* 102:5126–5131. PMID: [15795373](https://pubmed.ncbi.nlm.nih.gov/15795373/)
36. Tiller T., Busse C.E., and Wardemann H. 2009. Cloning and expression of murine Ig genes from single B cells. *Journal of immunological methods* 350:183–193. doi: [10.1016/j.jim.2009.08.009](https://doi.org/10.1016/j.jim.2009.08.009) PMID: [19716372](https://pubmed.ncbi.nlm.nih.gov/19716372/)