

James Madison University

JMU Scholarly Commons

Global CWD Repository

Center for International Stabilization and
Recovery

4-2020

HD R&D Field Evaluation: Traxx

U.S. Humanitarian Demining Research and Development
U.S. HD R&D

Follow this and additional works at: <https://commons.lib.jmu.edu/cisr-globalcwd>



Part of the [Defense and Security Studies Commons](#), [Peace and Conflict Studies Commons](#), [Public Policy Commons](#), and the [Social Policy Commons](#)

Recommended Citation

and Development, U.S. Humanitarian Demining Research, "HD R&D Field Evaluation: Traxx" (2020). *Global CWD Repository*. 1402.

<https://commons.lib.jmu.edu/cisr-globalcwd/1402>

This Other is brought to you for free and open access by the Center for International Stabilization and Recovery at JMU Scholarly Commons. It has been accepted for inclusion in Global CWD Repository by an authorized administrator of JMU Scholarly Commons. For more information, please contact dc_admin@jmu.edu.



UNITED STATES DEPARTMENT OF DEFENSE

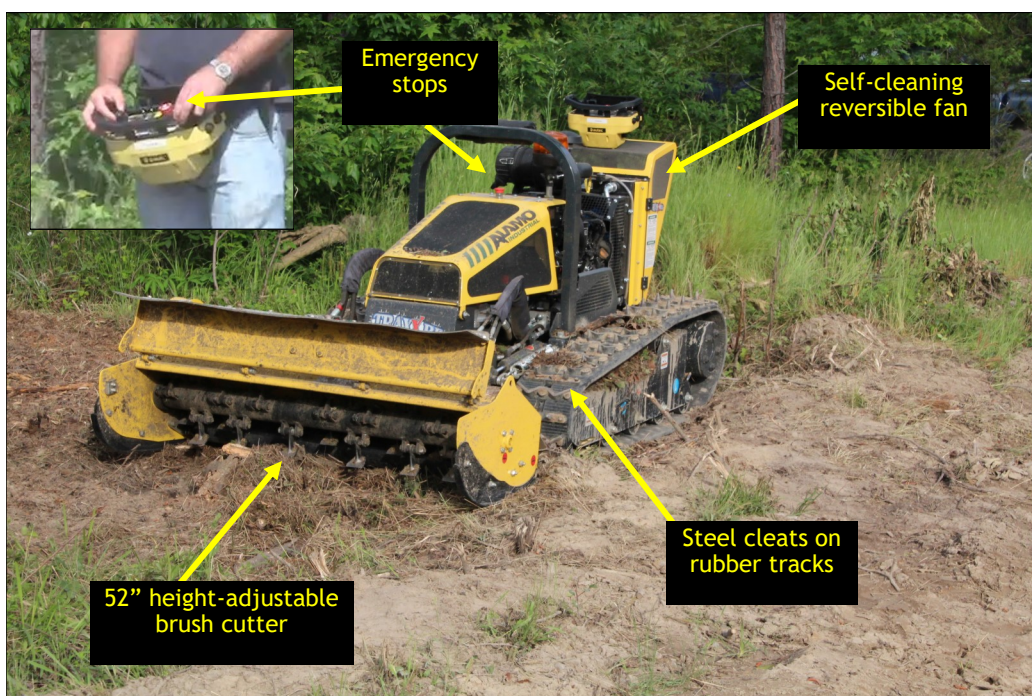
HUMANITARIAN DEMINING R&D PROGRAM

Remote-controlled mower for vegetation removal

Traxx

Traxx is a commercial remote controlled vegetation cutter capable of working in steep and rough terrain. It features rubber tracks with steel spikes able to negotiate slopes up to 60 degrees. The manufacturer installed remote control has a working range up to 1000 feet. During technical testing, the 52" wide brush cutting attachment cut and mulched saplings and heavy brush, leaving very little debris behind.

TRAXX has also undergone technical testing with two additional attachments.



STATUS

Two systems were in Cambodia for operational field evaluations by the Mines Advisory Group and The HALO Trust. The two systems combined have cleared over 690,700 m² to date.

The in-house designed and fabricated Sparrow attachment is designed to lift AP mines out of the ground and deposit them to the side of the TRAXX for subsequent disposal. The HD R&D Program also tested a new tiller attachment in that allows TRAXX to support technical survey and AP mine clearance.

Other commercial attachments useful for humanitarian mine action are available for the system. One example is a stump grinder/trenching tool that gives TRAXX the capability to perform point excavation tasks such as opening holes adjacent to unexploded ordnance and removing larger vegetation (trees up to 20 cm in diameter).

Cutting-Edge Solutions
DEMINING TECH

AREA PREPARATION



FEATURES

- Remote controlled with up to four cameras
- Multipurpose, skid-steer chassis
- Attachments for vegetation cutting, tilling and mine clearance (Sparrow)



AP mine clearing Sparrow attachment

TRAXX with vegetation cutter attachment during technical test



Additional commercial attachments applicable to demining and UXO clearance are available such as this stump grinder/trencher



APPLICATIONS

- Technical survey
- Vegetation clearance
- AP mine clearance

TRAXX SPECIFICATIONS

Engine	3 cyl, 40 hp Isuzu
Max Speed	6 mph
Weight	2800 lb /
Height	46 in /
Length	106 in /
Width	56 in /
Cutting Width	52 in /

US Army RDECOM CERDEC NVESD
info@nvl.army.mil
10221 Burbeck Road
Fort Belvoir, VA 22060-5806 USA
www.humanitarian-demining.org