



University of Richmond
UR Scholarship Repository

Biology Faculty Publications

Biology

11-18-2019

Thermal Stress Responses of *Sodalis Glossinidius*, an Indigenous Bacterial Symbiont of Hematophagous Tsetse Flies

Jose Santinni Roma

Shaina D'Souza


Patrick J. Somers

Leah F. Cabo

Ruhan Farsin

See next page for additional authors

Follow this and additional works at: <https://scholarship.richmond.edu/biology-faculty-publications>

 Part of the [Biology Commons](#), and the [Genetics and Genomics Commons](#)

Recommended Citation

Roma, Jose Santinni, Shaina D'Souza, Patrick J. Somers, Leah F. Cabo, Ruhan Farsin, Serap Aksoy, Laura J. Runyen-Janecky, and Brian L. Weiss. "Thermal Stress Responses of *Sodalis Glossinidius*, an Indigenous Bacterial Symbiont of Hematophagous Tsetse Flies." *Plos Neglected Tropical Diseases* 13, no. 11 (November 2019): e0007464.

This Article is brought to you for free and open access by the Biology at UR Scholarship Repository. It has been accepted for inclusion in Biology Faculty Publications by an authorized administrator of UR Scholarship Repository. For more information, please contact scholarshiprepository@richmond.edu.

Authors

Jose Santinni Roma, Shaina D'Souza, Patrick J. Somers, Leah F. Cabo, Ruhan Farsin, Serap Aksoy, Laura J. Runyen-Janecky, and Brian L. Weiss

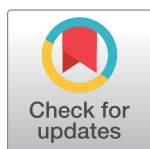
RESEARCH ARTICLE

Thermal stress responses of *Sodalis glossinidius*, an indigenous bacterial symbiont of hematophagous tsetse flies

Jose Santinni Roma¹, Shaina D'Souza¹, Patrick J. Somers¹, Leah F. Cabo¹, Ruhan Farsin¹, Serap Aksoy², Laura J. Runyen-Janecky^{1*}, Brian L. Weiss^{2*}

1 Department of Biology, University of Richmond, Richmond, Virginia, United States of America, **2** Yale School of Public Health, Department of Epidemiology of Microbial Diseases, New Haven, Connecticut, United States of America

* lrunyenj@richmond.edu (LJR-J); brian.weiss@yale.edu (BLW)



OPEN ACCESS

Citation: Roma JS, D'Souza S, Somers PJ, Cabo LF, Farsin R, Aksoy S, et al. (2019) Thermal stress responses of *Sodalis glossinidius*, an indigenous bacterial symbiont of hematophagous tsetse flies. *PLoS Negl Trop Dis* 13(11): e0007464. <https://doi.org/10.1371/journal.pntd.0007464>

Editor: Joshua B. Benoit, University of Cincinnati, UNITED STATES

Received: May 9, 2019

Accepted: October 24, 2019

Published: November 18, 2019

Copyright: © 2019 Roma et al. This is an open access article distributed under the terms of the [Creative Commons Attribution License](https://creativecommons.org/licenses/by/4.0/), which permits unrestricted use, distribution, and reproduction in any medium, provided the original author and source are credited.

Data Availability Statement: All relevant data are within the manuscript and its Supporting Information files.

Funding: This study was supported by NIH awards AI094343 and AI124105 to LRJ. The funders had no role in the study design, data collection and analysis, decision to publish, or preparation of the manuscript.

Competing interests: The authors have declared that no competing interests exist.

Abstract

Tsetse flies (Diptera: Glossinidae) house a taxonomically diverse microbiota that includes environmentally acquired bacteria, maternally transmitted symbiotic bacteria, and pathogenic African trypanosomes. *Sodalis glossinidius*, which is a facultative symbiont that resides intra and extracellularly within multiple tsetse tissues, has been implicated as a mediator of trypanosome infection establishment in the fly's gut. Tsetse's gut-associated population of *Sodalis* are subjected to marked temperature fluctuations each time their ectothermic fly host imbibes vertebrate blood. The molecular mechanisms that *Sodalis* employs to deal with this heat stress are unknown. In this study, we examined the thermal tolerance and heat shock response of *Sodalis*. When grown on BHI agar plates, the bacterium exhibited the most prolific growth at 25°C, and did not grow at temperatures above 30°C. Growth on BHI agar plates at 31°C was dependent on either the addition of blood to the agar or reduction in oxygen levels. *Sodalis* was viable in liquid cultures for 24 hours at 30°C, but began to die upon further exposure. The rate of death increased with increased temperature. Similarly, *Sodalis* was able to survive for 48 hours within tsetse flies housed at 30°C, while a higher temperature (37°C) was lethal. *Sodalis*' genome contains homologues of the heat shock chaperone protein-encoding genes *dnaK*, *dnaJ*, and *grpE*, and their expression was up-regulated in thermally stressed *Sodalis*, both *in vitro* and *in vivo* within tsetse fly mid-guts. Arrested growth of *E. coli dnaK*, *dnaJ*, or *grpE* mutants under thermal stress was reversed when the cells were transformed with a low copy plasmid that encoded the *Sodalis* homologues of these genes. The information contained in this study provides insight into how arthropod vector enteric commensals, many of which mediate their host's ability to transmit pathogens, mitigate heat shock associated with the ingestion of a blood meal.

Author summary

Microorganisms associated with insects must cope with fluctuating temperatures. Because symbiotic bacteria influence the biology of their host, how they respond to temperature

changes will have an impact on the host and other microorganisms in the host. The tsetse fly and its symbionts represent an important model system for studying thermal tolerance because the fly feeds exclusively on vertebrate blood and is thus exposed to dramatic temperature shifts. Tsetse flies house a microbial community that can consist of symbiotic and environmentally acquired bacteria, viruses, and parasitic African trypanosomes. This work, which makes use of tsetse's commensal endosymbiont, *Sodalis glossinidius*, is significant because it represents the only examination of thermal tolerance mechanisms in a bacterium that resides indigenously within an arthropod disease vector. A better understanding of the biology of thermal tolerance in *Sodalis* provides insight into thermal stress survival in other insect symbionts and may yield information to help control vector-borne disease.

Introduction

Tsetse flies (Order: Diptera) house a microbial community that can consist of symbiotic and environmentally acquired bacteria, viruses, and parasitic trypanosomes. Among these are the primary endosymbiont *Wigglesworthia glossinidia*, a secondary symbiont *Sodalis glossinidius*, parasitic *Wolbachia sp.* (reviewed in [1, 2]) and *Spiroplasma* [3]. *Sodalis* (order: Enterobacteriaceae) resides intra- and extracellularly within the fly's midgut, hemolymph, milk and salivary glands, muscle, and fat body tissues [4–7]. Both *Sodalis* and *Wigglesworthia* are passed vertically to tsetse progeny via maternal milk gland secretions [8, 9]. Although the population dynamics of *Sodalis* in laboratory reared and field-captured tsetse flies has been well-documented [10–12], the functional relevance of this secondary symbiont to the fly's physiology is currently unclear. *Sodalis* likely provides some benefit to tsetse, as flies exhibit a reduced lifespan when *Sodalis* is selectively eliminated via treatment with antibiotics [13]. Additionally, *Sodalis* may modulate tsetse's susceptibility to infection with parasitic African trypanosomes (*Trypanosoma brucei sp.*) [14], which are the etiological agents of human and animal African trypanosomiasis. Specifically, this bacterium's chitinolytic activity results in the accumulation of *N*-acetyl-D-glucosamine, which is a sugar that inhibits the activity of trypanocidal lectins [15]. In support of this theory, several studies using field-captured tsetse have noted that the prevalence of trypanosome infections positively correlates with increased *Sodalis* density in the fly's gut [16–19].

Like many animal-bacterial symbiotic consortia, the ectothermic tsetse fly and its endosymbionts are sensitive to changes in temperature. In fact, the effect of temperature on the insect-symbiont relationship, and how symbionts contribute to insect host thermal tolerance, are common experimental considerations. Corbin et al [20] analyzed data from a large number of insect-symbiont systems and concluded that the nature of the insect hosts thermal environment influences symbiont density. Furthermore, the effect of symbionts on the thermal tolerance of the host can be complex. This relationship has been well studied in the pea aphid (*Acyrtosiphon pisum*) model system. This insect can house several symbiotic bacteria, including *Buchnera aphidicola*, *Serratia symbiotica* and *Hamiltonella defensa*, all of which increase their hosts tolerance to heat stress. Conversely, another symbiont, *Regiella insecticola*, decreases the aphid's survival under high temperature conditions [21, 22]. These relationships are reflective of the fact that the thermal environment mediates a variety of interactions between insect hosts and their microbial symbionts.

The gut of hematophagous arthropods, including that of the tsetse fly, represents an environment that presents rapid and dramatic feeding status-based temperature shifts that likely

alter the thermal stress physiology of the fly and its indigenous symbionts [23, 24]. In fact, temperature is one of the most important factors that controls bacterial growth and survival. Temperatures approaching and at the maximal temperature for a given bacterial species cause protein denaturation and membrane destabilization. Stabilization and refolding of denatured proteins via protein chaperones comprise mechanisms that bacteria use to combat thermal stress at elevated temperatures. One of the major chaperone systems is the ATP-dependent DnaK system, which is comprised of DnaK, the co-chaperone DnaJ and the nucleotide exchange factor GrpE (reviewed in [25, 26]). DnaK homologues are distributed across all three branches of life. With the help of DnaJ, DnaK binds to unfolded proteins. ATP hydrolysis facilitates a conformational change in DnaK, which then surrounds the substrate protein and enables refolding. GrpE then facilitates ATP regeneration at the complex, which causes a conformational change that releases the refolded protein. In *E. coli* the expression of these three genes increases upon exposure to elevated temperatures via the alternative σ^{32} (σ^H) sigma factor, which directs RNA polymerase to the *dnaK/dnaJ* and *grpE* promoters [27, 28].

The functional role of DnaK as it relates to thermal stress has been studied using a select number of model bacterial species. As such, this topic is understudied in symbionts that reside within ectothermic animal hosts. With respect to the DnaK/DnaJ chaperone system, Brooks *et al.* [29] showed that the system is required for *Vibrio fischeri* colonization of its *Euprymna scolopes* squid host via regulation of proper biofilm formation. Manipulating genes of bacteria that are symbionts of insects, or that are vectored by insects, is technically challenging. As such, functional characterization of symbiont DnaK has heretofore been performed by ectopically expressing corresponding genes in heterologous bacteria. In these studies, the *dnaK* genes from *Buchnera aphidicola*, an aphid symbiont, and *Borrelia bordoferii*, which is vectored by ticks, showed partial to no complementation of the thermal sensitive phenotype in *E. coli dnaK* mutants [30, 31]. Additionally, a second chaperone, GroEL, is one of the most highly expressed proteins in many insect bacterial symbionts, including *Sodalis* [32, 33]. The molecular mechanisms that underlie *Sodalis*' ability to reside successfully within the thermally fluctuating tsetse midgut environment are currently unknown. In this study we investigate *Sodalis*' thermal tolerance profile and the functionality of the bacterium's DnaK/DnaJ/GrpE chaperone system in response to thermal stress.

Methods

Bacterial strains, plasmids, and growth conditions

The bacterial strains and plasmids used in this study are listed in [S1 Table](#). *E. coli* strains were grown in Luria-Bertani Broth (LB) or on Luria-Bertani Agar (L Agar) plates. Liquid cultures were incubated at 37°C with 200 rpm aeration. *Sodalis glossinidius* were grown at 25°C and 10% CO₂ on Brain Heart Infusion (BHI) agar both with or without 10% horse blood (BBHI) (Quad Five, Ryegate, MT). The initial primary *Sodalis* culture used in these experiments (SOD^F) was established by washing two-week-old *G. m. morsitans* pupae consecutively in 40% EtOH, 30% EtOH and sterile BHI media for 30 minutes per solution. Sterilized pupae were then homogenized in 100 μ l of fresh BHI and plated on BBHI plates without antibiotics. Liquid *Sodalis* cultures were started by inoculating colonies into liquid BHI in petri dishes and incubating without aeration in a 10% CO₂ microaerophilic environment. New cultures of *Sodalis* were typically inoculated at optical densities at 600 nm (OD₆₀₀) of approximately 0.08. Antibiotics were used for *E. coli* at the following concentrations: carbenicillin (carb) 125 μ g/ml, ampicillin (amp) 50 μ g/ml, chloramphenicol (cam) 30 μ g/ml, and kanamycin (kan) 50 μ g/ml.

Insect maintenance

Glossina morsitans were maintained at 25°C with 60-65% relative humidity in the insectary at the Yale School of Public Health. Unless indicated otherwise, all flies received defibrinated bovine blood (Quad Five) every 48 hours through an artificial membrane feeding system [34].

Plasmid construction

Plasmids were isolated using the QIAprep Spin Miniprep Kit (Qiagen, Valencia, CA). DNA fragments and enzyme reactions were purified with QIAquick gel extraction kit (Qiagen). All ligations were done with T4 DNA Ligase (Promega) and transformed into *E. coli* DH5 α . The sequences of the PCR primers for cloning are listed in S2 Table, and all PCRs for cloning were done using PfuTurbo (Agilent, Santa Clara, CA). To construct pJR1 and pJS2, DNA fragments containing *dnaK* were PCR amplified from *Sodalis* or from *E. coli* (with primers UR423 and UR424 or UR518 and UR519, respectively), digested with XbaI and XhoI, and ligated to pWKS30 digested with the same enzymes. To construct pJR5, a modified procedure from the Quickchange II Site Directed Mutagenesis Kit (Agilent Technologies, Santa Clara, CA) was used. A DNA fragment containing *dnaJ* and ends that match the pJR1 plasmid was PCR amplified from *Sodalis* with primers UR530 and UR531. This PCR fragment was then annealed to pJR1 and used as the primers to synthesize a larger plasmid containing both *Sodalis dnaK* and *dnaJ*. The template pJR1 plasmid was then degraded with addition of DpnI, and the reaction mixture was transformed into *E. coli* NEB 5-alpha to recover pJR5. This plasmid was sequenced to verify that the DNA sequence of *dnaKJ* was the same as the chromosomal sequence. To construct pSD2, pJR5 was cut with MscI and a 1 kb internal segment of *dnaK* was deleted. To construct pRF2, a DNA fragment containing *grpE* was PCR amplified from *Sodalis* with primers UR455 and UR456 digested with XbaI and PstI, and ligated to pWKS30 digested with the same enzymes.

Thermal stress and survival assays for *in vitro* *Sodalis*

For growth assays, *Sodalis* were cultured in BHI at an OD₆₀₀ of 0.08, grown for 2 days at 25°C, re-normalized to an OD of 0.02 (~10⁷ bacteria per ml), and serially diluted in BHI broth. 10 μ l (or 100 μ l) of each serial dilution was spotted (or spread) on agar plates [BHI, BBHI or BHI supplemented with 0.6-10% horse serum (Hemostat Labs, Dixon, CA)]. Plates were incubated in a 10% CO₂ incubator or in CampyPak microaerobic pouches (Becton, Dickinson and Company, Franklin Lakes, NJ) at the various temperatures indicated in the figure and table legends. Growth under each condition was assessed by scoring for the presence or absence of colonies after 7 days.

For thermal tolerance survival assays, *Sodalis* were inoculated in BHI at an OD₆₀₀ of 0.08, grown for two days at 25°C, diluted to an OD₆₀₀ of 0.1 in BHI broth, and aliquoted into samples that were incubated at 25°C, 30°C, 32°C, or 37°C for 3 days. Viable surviving bacteria were quantified each day by serially diluting the samples and plating on BHI agar plates and incubating the plates at 25°C. The number of colonies was counted seven days later, total number of viable cells at each temperature and time point were calculated by multiplying the number of colonies by the dilution factor and dividing by the amount of sample plated.

Thermal stress assays for *in vivo* *Sodalis*

Sodalis residing within tsetse were thermally stressed by holding flies at 30°C or 37°C in an incubator for 48 hours. Subsequently, midguts microscopically excised from these flies, and

control flies maintained at 25°C, were homogenized in 0.85% NaCl, serially diluted and plated on BBHI agar [10]. Colony forming units per plate were counted manually.

Quantitation of *Sodalis* chaperone gene expression

For measuring *in vitro* gene expression, *Sodalis* cultures were grown in BHI from a starting OD₆₀₀ of 0.08 for 1 day and then thermally stressed as follows: Cultures (1 ml) were transferred to microfuge tubes and placed in water baths at 25°C or 30°C for 15 minutes, and 37°C for 5, 10 and 15 minutes. 250 µl of RNA stabilizing reagent (95% acidic phenol/5% ethanol) was added to each sample to stabilize the RNA after incubation. The RNA was isolated using the RNeasy Mini Kit Procedure (Qiagen), and the isolated RNA was treated with DNase I (Qiagen) until the samples were free of contaminating DNA as confirmed by PCR. cDNA was generated from 200 ng of total RNA using Superscript III and random hexamers (Invitrogen, Carlsbad, CA).

Sodalis gene expression was measured *ex vivo* by dissecting midguts ($n=5$ biological replicates, each containing 5 midguts) from 8 day old wild-type tsetse that had previously been fed three times, the last feeding having occurred 72 hours prior to dissection. The intact *Sodalis* harboring tissues were placed on a 37°C heat block (housed in an incubator set at the same temperature) for two minutes. We chose to perform the experiment in this manner because the large quantity of blood present in tsetse's midgut following consumption of a meal (the fly can consume 2-5 times its body weight each time it feeds [35]) interferes with the accurate measurement of symbiont gene expression in this tissue. We incubated the midguts at 37°C for two minutes because these parameters most accurately reflect the physiological conditions that *Sodalis* experiences when tsetse feeds. Specifically, the fly's body reaches its maximum temperature of 37°C within 50 seconds of consuming a vertebrate blood meal [20]. We allowed the midguts to incubate at this temperature for an additional 70 seconds to account for the fact that our experimental radiant transfer of heat occurred from the outside in, while under natural conditions *Sodalis* present in tsetse's midgut are immediately bathed directly in vertebrate blood when the fly consumes a meal. Control samples ($n=5$ biological replicates, each containing 5 midguts) were obtained by dissecting midguts from tsetse housed under normal insectary conditions (25°C). Midgut total RNA (including symbiont RNA) was then isolated using Trizol reagent (Invitrogen, Carlsbad, CA) and treated with DNase (Turbo DNA-free kit, Thermo Fisher) until the samples were free of contaminating DNA. cDNA was generated from 200 ng of total RNA using the iScript cDNA synthesis kit (Bio-Rad).

For both *in vitro* and *in vivo* analyses, quantitative PCR was performed using primers UR545 and UR546 for *dnaK*, UR556 and UR557 for *dnaJ*, and UR558 and UR559 for *grpE*. Constitutively expressed gene *rplB* (previously verified in [36, 37], amplified using primers QrplB1F and QrplB1R, was used to normalize transcript levels. All primer sequences are indicated in S2 Table.

Thermal stress assays for *E. coli* mutants expressing *Sodalis* chaperone genes

Overnight cultures of the *E. coli* strains carrying plasmids with *Sodalis* genes were grown in LB containing carb and the antibiotic marking the chromosomal mutations (cam for MC4100Δ*dnaK* and kan for JW0014-1) at 30°C. For assessment of growth on agar plates, the overnight cultures were serially diluted 1:10 six times in LB and 10 µL each dilution were spotted onto L agar plates containing carb. Plates were placed at 30°C (non-stress temperature) and 45±1°C (thermal stress temperature) overnight and growth was assessed the following day. For assessment of growth in liquid, the overnight cultures were subcultured 1:100 in LB

containing carb and incubated at 30°C until midlog stage was reached. Then, each culture was diluted to an OD₆₀₀ of 0.06 in LB containing carb and incubated at either 30°C or 45±1°C. Growth was measured via optical density at 600 nm.

Statistical analyses

All statistical analyses were carried out using GraphPad Prism (v.8) or Microsoft Excel. ‘Raw’ data underlying the results presented in the figures are contained in Supplemental data files 1 and 2. All statistical tests used, and statistical significance between treatments, and treatments and controls, are indicated on the figures or in their corresponding legends. All samples sizes are provided in corresponding figure legends or are indicated graphically as points on dot plots. Biological replication implies distinct aliquots of cultured *Sodalis*, and distinct groups of flies collected on different days, were used for all experiments.

Results

Establishing the thermal range for *Sodalis* growth *in vitro* on un-supplemented BHI agar

To determine maximal temperature for *Sodalis* growth, *Sodalis* cultures were serially diluted and spotted on BHI agar plates, which were then incubated at various temperatures for 7 days. All of the spotted *Sodalis* dilutions (ranging from 10⁻¹ to 10⁻⁴) formed colonies on BHI agar at temperatures up to 29°C. At 30°C on BHI, *Sodalis* was unable to form colonies at the highest two dilutions (10⁻³ and 10⁻⁴) and did not form any colonies at ≥ 31°C (Table 1, column 1).

Presence of blood in the agar or growth in microaerobic environments extends *Sodalis* thermal tolerance

Tsetse’s gut is likely hypoxic, and after the first adult feeding, always contains some quantity of vertebrate blood. Thus, to more closely mimic gut conditions and determine how they influence *Sodalis* thermal stress survival, we tested the bacterium’s thermal tolerance when grown on BHI agar plates supplemented with blood and/or in a reduced oxygen environment (through the use of CampyPak microaerobic pouches, which reduces environmental oxygen levels to 5-15%). We found that either condition enabled *Sodalis* to form colonies at the highest dilution (10⁻⁴) at 30°C (Table 1). However, as the temperature increased, the ability of the

Table 1. Thermal growth range for *Sodalis* on agar plates.

incubation temperature (°C)	Growth of bacteria ^a			
	in CO ₂ incubator		in CampyPak	
	BHI	BHI + blood	BHI	BHI + blood
25	+	+	+	+
29	+	+	+	+
30	± (10 ⁻²)	+	+	+
31		± (10 ⁻²)	± (10 ⁻²)	± (10 ⁻³)
32			Haze at 10 ⁻¹	± (10 ⁻²)
33				Haze at 10 ⁻¹

^aTwo day old *Sodalis* cultures were normalized to an OD of 0.02 (~10⁷ bacteria per ml) and serially diluted 1:10 four times. 10 µl of each serial dilution was spotted on agar plates and incubated as indicated. The data shown are representative of at least three independent experiments. +, growth at all dilutions; ±, growth only to the dilution indicated in parenthesis. Black shaded boxes = no visible growth.

<https://doi.org/10.1371/journal.pntd.0007464.t001>

bacteria to form colonies at all dilutions was diminished in these supplemented growth conditions. At 32°C, no colonies were present on the blood-supplemented plate incubated aerobically, and only a hazy film of growth formed at 10⁻¹ upon CampyPak-incubation. The plates that had both blood-supplementation and CampyPak-incubation showed colonies at 10⁻² dilutions at 32°C, but just a haze of growth at 33°C (Table 1).

Growth stimulation due to blood supplementation of agar could be due to either a component of the erythrocytes or the serum fraction. To determine which contained the stimulating factor(s), we added either purified erythrocytes or serum to the BHI agar plates. Only the agar supplemented with the erythrocytes supported growth (Table 2), suggesting that some component of this cell type facilitates *Sodalis* growth under stressed conditions.

Exposure to temperatures above 30°C is lethal to *Sodalis in vitro* and *in vivo*

The lack of *Sodalis* growth above 30°C on BHI agar could be because this temperature is either bacteriostatic or bactericidal (bacteria are alive but not growing, versus bacteria are dead). To distinguish between these two possibilities, we exposed *Sodalis* cultured in BHI broth to temperatures that were non-permissive for optimal growth (≥ 30°C) and then plated the bacteria on agar plates at a permissive temperature to quantify the number of cells that remained viable in the BHI broth culture. Within 24 hours of exposure to the non-permissive temperatures, less than 40% of the *Sodalis* survived temperatures above 30°C. By 72 hours, only 0.4% of the cells were recovered from samples exposed to 32°C, and no bacteria could be recovered from the samples at 37°C (Fig 1A). The samples incubated at 30°C were able to survive as well as the samples at 25°C for the first 24 hours. However, only 33% and 12% of the cells survived for 48 and 72 hours, respectively.

We next investigated the thermal tolerance of *Sodalis* that reside indigenously within tsetse by exposing wild-type flies to elevated temperatures for two days. Similar numbers of *Sodalis* were recovered from control (1.8x10⁶±1.3x10⁵ CFU) and treatment (2.2x10⁶±1.8x10⁵ CFU) tsetse housed at 25°C and 30°C, respectively. Conversely, tsetse housed at 37°C harbored 4.2x10⁴±1.3x10⁴ *Sodalis* CFU, which represents a 98% reduction in bacterial density compared to controls (Fig 1B). Thus, unlike cultured *Sodalis*, cells that reside within tsetse’s midgut are able to survive at 30°C or at least 2 days. This outcome suggests that the two *Sodalis* populations (*in vitro* and *in vivo*) present different thermal stress responses.

Sodalis contains DnaK, DnaJ, and GrpE homologues

The DnaK/DnaJ/GrpE chaperone system enables bacterial cells to respond to elevated temperature (reviewed in [26]). *Sodalis*’s genome encodes proteins annotated as DnaK, DnaJ, and GrpE

Table 2. Blood stimulation of *Sodalis* growth.

temperature (°C)	Growth of bacteria ^a			
	BHI	BHI + blood ^b	BHI + RBC ^c	BHI + serum ^d
25	+	+	+	+
30	-	+	+	-

^aTwo-day old *Sodalis* cultures were serially diluted in BHI and approximately 100 bacteria were spread on the indicated agar plates and incubated for 7 days. +, growth; -, no growth

^bDefibrinated horse blood was at a final concentration of 10%.

^cTo obtain just erythrocytes, the equivalent amount of blood for a final concentration of 10% was centrifuged (1500xg) and the pelleted cells were added to the agar.

^dHorse serum was added to a final concentration of 0.6%, 1.2% and 10%.

<https://doi.org/10.1371/journal.pntd.0007464.t002>

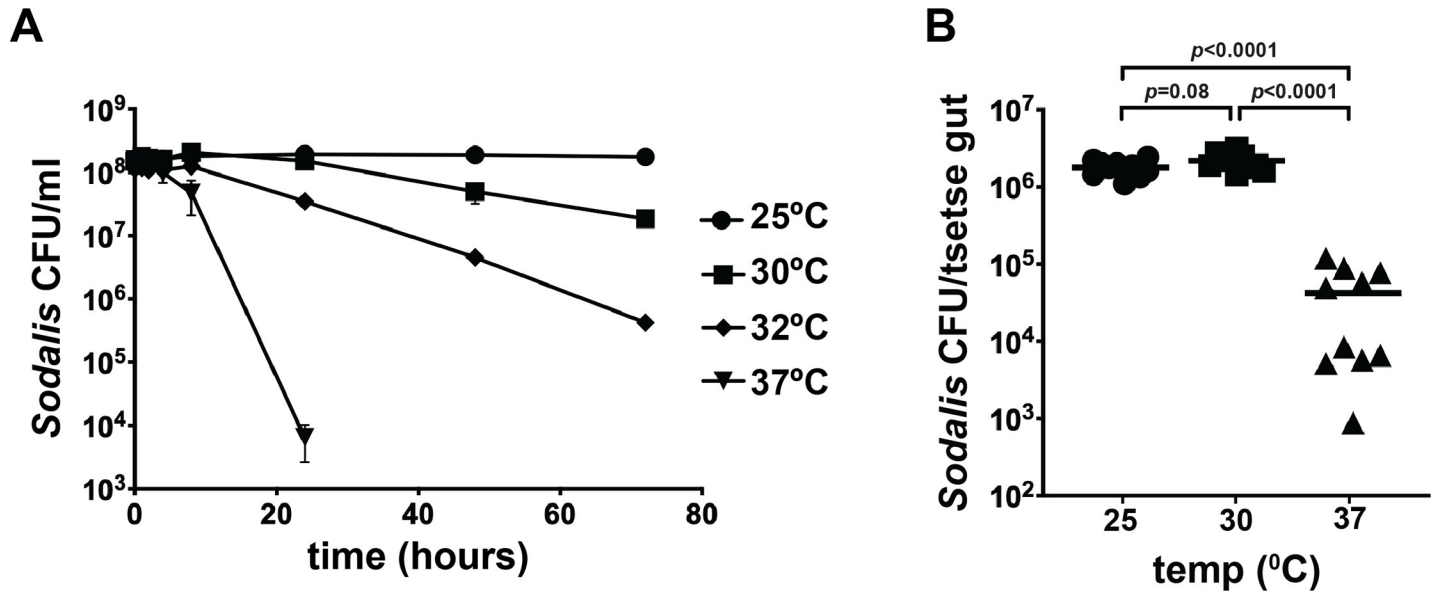


Fig 1. *Sodalis* survival at non-permissive growth temperatures. (A) Two-day old *Sodalis* cultures were diluted to an OD₆₀₀ of 0.1 and incubated at 25°, 30°C, 32°C and 37°C for two days. Viable surviving bacteria were quantified by plating on BHI agar plates at the indicated time points and incubating the plates at 25°C. The number of colonies was counted seven days later and used to determine the total number of viable cells at each temperature and time point. Each timepoint represents the average of three trials, ± standard deviation. (B) Tsetse flies were reared at 25°C, 30°C and 37°C for two days, after which midguts were excised, homogenized in 0.85% NaCl and plated on BBHI agar. *Sodalis* density per midgut was determined by manually counting colonies. Each data point on the graph represents one midgut (*n*=10 per treatment), and statistical significance was determined using a one-way ANOVA followed by Tukey’s HSD post-hoc analysis.

<https://doi.org/10.1371/journal.pntd.0007464.g001>

[38]. The *dnaK* and *dnaJ* genes are tandemly organized on the chromosome, with a 117 bp intergenic region between them, while *grpE* is located 2 Mbp away. Well-conserved σ^{32} binding sites are located 124 and 47 bp 5’ of the *dnaK* and *grpE* start codons, respectively (S1A and S1B Fig). No σ^{32} or σ^{70} binding sites are present in the intergenic region between *dnaK* and *dnaJ*, but RNAs containing this sequence are capable of folding into an extended hairpin (S1C Fig).

Sodalis is less able to survive high temperatures than is closely-related, free-living *E. coli*. These differential phenotypes prompted us to compare the putative amino acid sequences of the *Sodalis* and *E. coli* chaperone proteins. *Sodalis* DnaK and DnaJ are 89% identical to their *E. coli* homologues, while *Sodalis* and *E. coli* GrpE exhibit 65% identity. Additionally, these *Sodalis* proteins have retained the conserved residues implicated in conferring thermal tolerance in *E. coli* (S2 Fig). We also examined the genomes of other insect bacterial symbionts for *Sodalis* DnaK homologues by performing a BLAST search with *Sodalis* DnaK. We found high levels of DnaK conservation with *Sodalis* DnaK in a wide variety of insect symbionts, including the primary symbiont of tsetse *Wigglesworthia glossinidia* (S3 Fig, S3 Table). Additionally, these proteins also retain conserved residues that confer thermal tolerance in *E. coli*. Our findings suggest that distinct bacterial taxa (e.g., *E. coli* and *Sodalis*) may exhibit very different thresholds of thermal stress despite the highly conserved nature of chaperone genes. Furthermore, elevated expression of these genes occurs at different temperatures, and other proteins may be involved in modulating thermal stress, in different bacteria.

dnaK, *dnaJ*, and *grpE* transcription increases at elevated temperatures *in vitro* and *in vivo*

In *E. coli* and many other bacteria, temperatures above the optimal growth temperature induce expression of the ATP-dependent *dnaK* system [39]. Thus, we hypothesized that expression of

Sodalis homologues would similarly increase at temperatures above 25°C. To test this hypothesis initially, we isolated total RNA from *Sodalis* that had been exposed to 25°C and 30°C temperatures *in vitro* for 15 minutes and then used RT-qPCR to measure *dnaK*, *dnaJ*, and *grpE* expression levels. *Sodalis dnaK* expression increased an average of 5.4-fold when the bacterium was exposed to 30°C, as compared to 25°C (Fig 2A). Likewise, *dnaJ* and *grpE* expression were on average 8.4-fold and 6.7-fold induced, respectively, at elevated temperatures (Fig 2A).

We additionally analyzed the expression of *Sodalis dnaK* after incubation for 5, 10 and 15 minutes at 37°C, which mimics the temperature that the bacterium would be exposed to when its tsetse host consumes a vertebrate blood meal [20]. *dnaK* transcript abundance increased at the earliest time point and continued to significantly increase thereafter (Fig 2B).

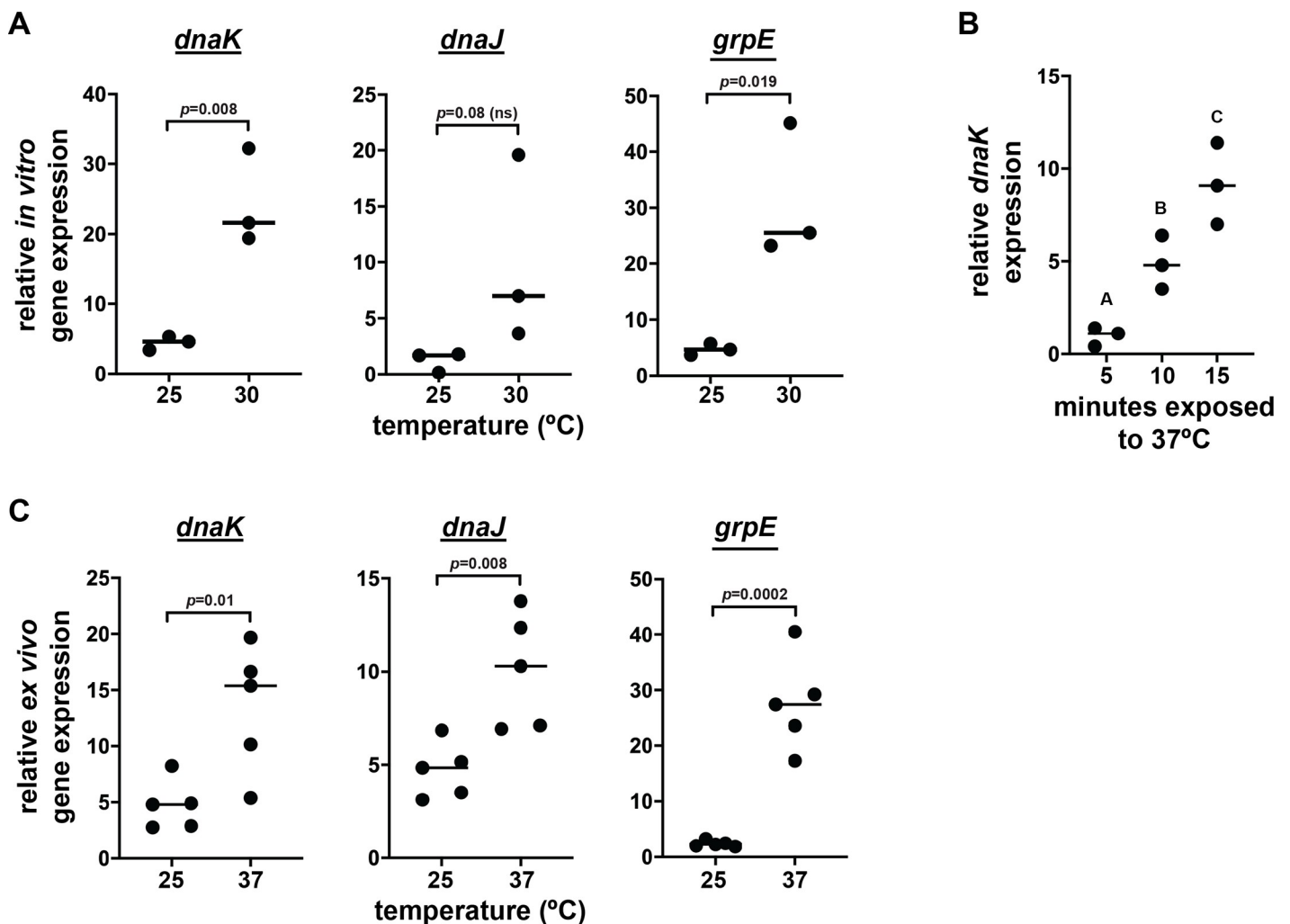


Fig 2. *Sodalis* chaperone gene expression positively correlates with increased temperature. (A) Cultured *Sodalis* were grown in BHI at 25°C for 1-2 days. Subsequently, the culture was split into two samples that were incubated at either 25°C or 30°C for 15 min. *dnaK*, *dnaJ*, *grpE* and constitutively expressed *rplB* transcript abundance was measured by RT-qPCR using gene specific primers. ns, not significant. (B) Cultured *Sodalis* were grown in BHI at 25°C for 1-2 days and subsequently split into two samples that were then incubated at either 25°C or 37°C for five, 10 or 15 minutes. *Sodalis dnaK* and *rplB* expression levels were then measured by RT-qPCR. (C) *Sodalis* harboring tsetse midguts were excised and incubated at either 25°C or 37°C for two minutes. *Ex vivo* expression of *dnaK*, *dnaJ* and *grpE* transcript abundance was measured by RT-qPCR using gene specific primers. In A, B and C, one dot on each graph represents one biological replicate, each of which contains *Sodalis* from three independent cultures (A and B) and midguts from five tsetse flies (C). Target gene (*dnaK*, *dnaJ* and *grpE*) expression in all experiments was normalized to the transcript abundance of constitutively expressed *rplB*. Horizontal bars in (A), (B) and (C) represent median values. Statistical analyses for (A) and (C) were unpaired t-tests, and for (B) one-way ANOVA followed by Tukey's HSD post-hoc analysis.

<https://doi.org/10.1371/journal.pntd.0007464.g002>

Finally, we monitored how *Sodalis* that reside indigenously within tsetse's gut respond to thermal stress. To do so we dissected *Sodalis*-harboring midguts from flies and then incubated the intact organ at 37°C for two minutes (the rationale behind why we used this *ex vivo* experimental protocol is described in detail in the Materials and Methods, subsection 'Quantitation of *Sodalis* chaperone gene expression'). Control midguts came from flies housed at 25°C. Expression of *Sodalis dnaK*, *dnaJ*, and *grpE* increased on average 2.9-fold, 2.1-fold and 11.5-fold, respectively, when tsetse midguts were exposed to 37°C for two minutes (Fig 2C).

Taken together, these data indicate that *Sodalis*' thermal stress tolerance system is induced at the temperature (30°C) that inhibits bacterial growth *in vitro*. Additionally, the system is also transcriptionally active both *in vitro* and in the bacterium's native niche of tsetse's midgut when exposed to ecological conditions reflective of those present in recently fed flies.

Sodalis DnaK, DnaJ, and GrpE mediate thermal tolerance in a heterologous *E. coli* host

To test whether the *Sodalis* DnaK, DnaJ, and GrpE proteins are functional chaperones, we expressed these *Sodalis* genes on plasmids in several different *E. coli* strains that lack the respective homologues. *E. coli* MC4100Δ*dnaK*, JW0014-1, and DA16 lack functional DnaK, DnaJ, and GrpE, respectively, and these strains cannot grow at temperatures at or above the elevated temperature of 45°C. To quantify the ability of the *Sodalis* chaperone proteins to functionally replace their *E. coli* homologues, we spotted serially diluted cultures of the mutant *E. coli* strains that express *Sodalis* genes on plates that were then incubated at permissive and elevated temperatures. All strains grew at the permissive temperature of 30°C (S4 Table). At 45°C, the *E. coli* mutant strains containing pWKS30, the vector control (empty plasmid), failed to grow. However, *E. coli* MC4100Δ*dnaK* expressing *Sodalis dnaK* survived as well as the parent strain at this elevated temperature (Fig 3). Likewise, *E. coli* JW0014-1 (Δ*dnaJ*) and DA16 (Δ*grpE*) expressing *Sodalis dnaJ* or *Sodalis grpE*, respectively, survived elevated temperature as well as the parent strains (Fig 3).

We also examined the growth kinetics of *E. coli* strains expressing *Sodalis dnaK* or *dnaJ* by performing growth curves at 30°C and 45±1°C. All strains grew at the permissive temperatures of 30°C (Fig 4), although the *dnaK* mutant containing the pWKS30 control plasmid grew slightly slower than the wildtype strain containing pWKS30. At 45±1°C, the *E. coli dnaK* mutant strain containing pWKS30 did not grow. *E. coli* MC4100Δ*dnaK* expressing *Sodalis dnaK* or *Sodalis dnaKJ* survived as well as the parent strain and control strains with *E. coli dnaK* (Fig 4). Taken together, these data suggest that the *Sodalis* DnaKJ/GrpE chaperone

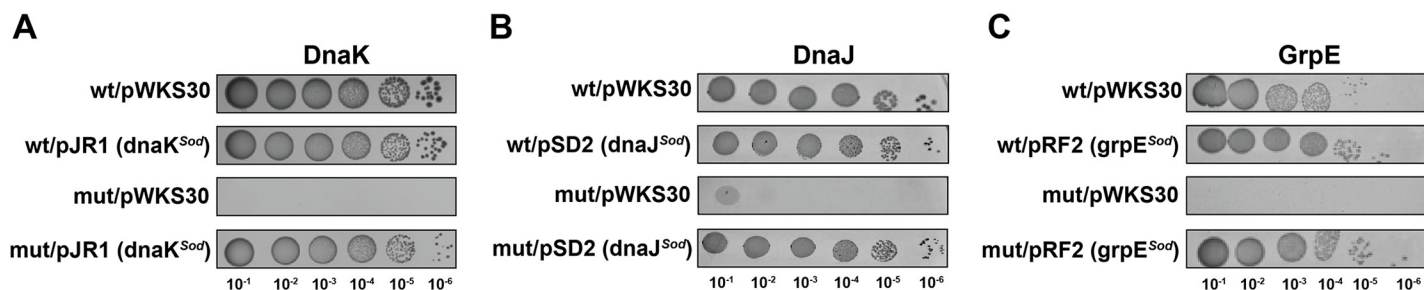


Fig 3. *Sodalis* chaperone genes facilitate *E. coli* survival at elevated temperatures. Overnight cultures of the indicated *E. coli* strains grown at 30°C were serially diluted (1:10) six times, and 10 μl of each dilution was spotted on L agar plates. The plates were incubated at 45±1°C for 18-24 hours. In all panels, experimental designations are indicated as the *E. coli* strain/introduced plasmid (containing the cloned *Sodalis* gene). All plasmids used are described in S1 Table. Panel A, wt (wild-type *E. coli* strain MC4100), mut [mutant *E. coli* strain MC4100Δ*dnaK* (Δ*dnaK*)]. Panel B, wt (wild-type *E. coli* strain BW25113), mut [mutant *E. coli* strain JW0014-1 (Δ*dnaJ*)]. Panel C, wt (wild-type *E. coli* strain DA15), mut [mutant *E. coli* strain DA16 (*grpE280*)]. The data shown are representative of at least three independent experiments.

<https://doi.org/10.1371/journal.pntd.0007464.g003>

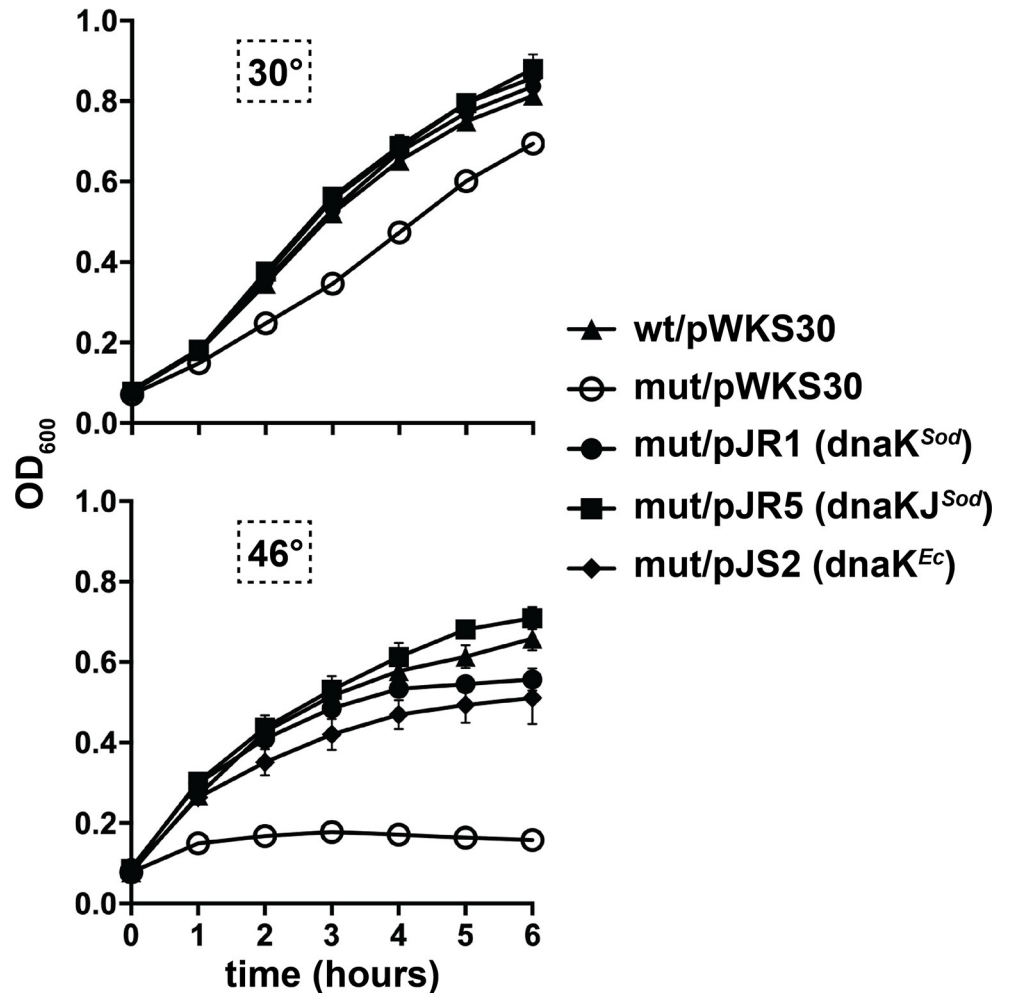


Fig 4. Growth kinetics of *E. coli* *dnaK* mutants containing *Sodalis* *dnaK* or *dnaK* and *dnaJ*. Mid-log phase cultures (37°C) of *E. coli* wt/pWKS30 or mutant *E. coli* [MC4100Δ*dnaK* (Δ*dnaK*)] containing either pWKS30, pJR1, pJR5, or pJS2 (all plasmids used are described in [S1 Table](#)) were diluted to an OD₆₀₀ of 0.06 in L broth containing carbenicillin and incubated at 30°C (top graph) or 45±1°C (bottom graph). Growth was measured via optical density at 600 nm. Each time point represents the mean of three individual experiments, ± the standard deviation.

<https://doi.org/10.1371/journal.pntd.0007464.g004>

system is sufficient for mediating heat shock survival in an *E. coli* heterologous host strain deficient in these functions.

Discussion

Ectothermic insects, and the bacterial symbionts that reside within them, are sensitive to temperature shifts in their environment. Bacteria that reside within the gut of hematophagous insects must also deal with a rapid increase in the temperature of their niche when their host consumes vertebrate blood. This study utilized the tsetse fly and its secondary symbiont, *Sodalis glossinidius*, to examine molecular mechanisms that may mediate thermal stress tolerance in an obligate blood feeding insect/bacterial symbiont model system. Our initial work examined the upper thermal limit for growth and survival of *Sodalis* maintained in culture and residing endogenously within tsetse. We found that *Sodalis* do not survive for extended periods of time when exposed to temperatures above 30°C in BHI media or within tsetse at 37°C.

This was surprising because, outside of a lab setting, tsetse flies and their *Sodalis* symbionts reside in sub-Saharan Africa where temperatures are often well above 30°C. Several scenarios may explain this unexpected finding. First, tsetse are crepuscular and thus feed during cooler dawn and dusk periods of the day [40]. Furthermore, although the environmental temperature routinely exceeds 30°C, tsetse seek cooler shade under these conditions [41]. Thus, even in the wild, *Sodalis* within tsetse might not be exposed to temperatures above 30°C for long periods of time. Although the fly's body temperature rises during and immediately after feeding to 36°C [24], it likely returns to ambient temperature well within *Sodalis*' window of survival. In fact, our results showed that in BHI broth, *Sodalis* can survive for limited periods of time at 30°C for 24 hours, 32°C for 8 hours, and 37°C for at least 2 hours. Second, the *Sodalis* used in this study were isolated from tsetse flies reared in a laboratory colony at 25°C for many years. *Sodalis* from these flies may have lost the ability to survive at higher temperatures, while recent environmental isolates of *Sodalis* may be more thermo-tolerant. Finally, environmental factors associated with the tsetse fly host (including other symbionts) may increase the upper thermal limit for *Sodalis* survival, and these factors may be absent from the tsetse colony and BHI growth media.

We discovered that modulating the composition and/or environment of agar plates on which *Sodalis* are cultured can restore growth at temperatures above 30°C. Specifically, either blood-supplementation of the agar, or growth within hypoxic CampyPaks (5-15% O₂), increased the high temperature threshold at which *Sodalis* could grow. The stimulation of growth by addition of whole blood is likely due to a component of the erythrocytes, and not the serum, as addition of serum alone did not restore growth of *Sodalis* at 30°C. In addition to hemoglobin, erythrocytes contain high levels of catalase [42, 43], which detoxifies the oxidative stress molecule H₂O₂ that is generated during cellular metabolism. Thus, catalase-mediated mitigation of oxidative stress in the presence of blood/erythrocytes may allow *Sodalis*, which does not itself produce catalase [44], to divert more resources to surviving thermal stress situations. Consistent with this hypothesis are the observations that (a) incubation of *Sodalis* in CampyPaks, which reduce oxidative stress by generating a hypoxic environment, also increased the high temperature threshold at which *Sodalis* could grow, but addition of hemoglobin did not, and (b) thermal tolerance and oxidative stress are physiologically linked, as increased temperatures can result in an oxidative stress burden on bacteria cells [45–47]. A similar phenomenon might be occurring in *Sodalis* in the fly. Specifically, tsetse's gut is likely hypoxic, and this environment may increase the thermal limit for *Sodalis* within the fly. Consistent with this idea, we found that although *Sodalis* struggled to grow at 30°C on BHI agar, the bacteria grew fine in the tsetse fly gut at this temperature.

DnaKJ/GrpE chaperone systems that enable refolding of proteins during thermal stress have been found in all domains of life, suggesting that selection for maintenance of these systems is strong. An analysis of over 1200 genomes in 2012 showed that *dnaK* was found in all bacteria, with the exception of two thermophiles isolated from deep sea hydrothermal vents [48]. More so, the function of DnaK chaperone systems is well characterized in several bacteria, the vast majority of which are pathogens. Comparatively, genomic conservation and physiological function systems is less well studied in symbionts that reside within ectothermic animal hosts. One exception is the aphid symbionts *Buchnera aphidicola*, *Serratia symbiotica* and *Hamiltonella defensa*, the latter two of which facilitate their insect host's survival in high temperature environments (51). Additionally, *dnaJ* and *grpE* are lost or truncated in a few highly reduced genomes from vertically transmitted endosymbionts that share ancient associations with cicadas, mealybugs, and psyllids [48]. Our work herein shows that the *dnaKJ* locus is conserved between *Sodalis* and *E. coli*, including promoter regions and a potential hairpin in the intergenic region between *dnaK* and *dnaJ*. Additionally, at the protein level, *Sodalis* DnaK

is 89% identical to its *E. coli* ortholog, and residues implicated in mediating thermal tolerance are conserved. Thus, the fact that *Sodalis* DnaK, DnaJ, and GrpE proteins can functionally replace the homologous *E. coli* proteins and promote growth at elevated temperature is not surprising. However, this finding of complementation is in contrast with DnaK from *Buchnera*, *Borrelia burgdorferi* and *Vibrio harveyi*, which exhibit partial (*B. burgdorferi*, at 37°C but not 43°C) or no complementation phenotypes when expressed ectopically in *E. coli dnaK* mutants [31, 49]. Our ability to complement was similar to complementation found with DnaK from *Pseudomonas syringae*, *Agrobacterium tumefaciens*, and *Brucella ovis* [50–52]. No apparent correlation exists between evolutionary relatedness of the above-mentioned bacteria to *E. coli* and the ability of their DnaK proteins to complement an *E. coli dnaK* mutant.

For bacteria that experience rapid fluctuations in their environment, the DnaK chaperone system may be especially critical. Induction of *Sodalis dnaK* expression in response to elevated temperature suggests that the bacterium uses DnaK to tolerate heat shock. Retention of these systems in tsetse's indigenous, enteric symbionts is indicative of their fundamental importance during times of thermal stress, such as that experienced when the fly host consumes vertebrate blood. In support of this theory, the highly reduced (~ 700 kB) genome of tsetse's obligate mutualist, *Wigglesworthia*, also encodes a conserved and putatively functional *DnaK* gene [53]. This bacterium resides intracellularly within tsetse's bacteriome organ [54], which is attached to the fly's anterior midgut and thus exposed to rapid changes in temperature following consumption of a blood meal. DnaK has also been implicated in protection against other environmental stresses, including acidic conditions, antibiotic resistance and oxidative stress [55–57]. Our results suggest that *Sodalis* requires DnaK to survive growth *in vitro*, as our attempts to generate mutations in the gene caused cell death. We tried insertions at four different locations in *dnaK* using Targetron mutagenesis, as well as deletion of *dnaK* by allelic change. Notably, these mutagenesis techniques have been successfully used to make mutations in numerous other *Sodalis* genes [58–60]. As *Sodalis* transitions from a free-living lifestyle to a mutualistic one [38], growth outside the tsetse host (on agar plates or in liquid BHI) may generate low-grade oxidative stress that requires DnaK for an appropriate cellular response that is critical for bacterial survival.

Maintenance of thermal tolerance homeostasis is an integral process that underlies successful insect host-bacterial symbiont interactions. In fact, symbiotic relationships are disrupted at elevated temperatures, and in some cases, heat-shock can result in the complete loss of these bacteria (reviewed in [61]). Symbionts that live within obligate hematophagous arthropods experience rapid changes in temperature as their host feeds, and these changes must be quickly mitigated to avoid disruption of epidemiologically relevant physiologies. For example, symbiotic bacteria that reside within arthropod vectors indirectly and directly mediate their host's vector competency. Tsetse's obligate symbiont *Wigglesworthia* [62], and mosquito [63] and tick [64] commensals, are responsible for mediating production of their host's peritrophic matrix (PM). This structure is a chitinous and proteinaceous 'sleeve' that lines the arthropod midgut [65], and in each of the abovementioned vectors, the PM serves as a protective barrier that their respective vertebrate pathogens must circumvent in order to establish midgut infections that are required for transmission to a subsequent vertebrate host. Intriguingly, *Sodalis* produces chitinase [15] that may exert a two-fold impact trypanosome infection establishment. First, *Sodalis* chitinolytic activity would likely degrade the structural integrity of tsetse's PM, thus making it easier for trypanosomes to cross the barrier and establish an infection in the fly's ectoperitrophic space [66, 67]. This process would result in the accumulation of *N*-acetyl-D-glucosamine, which would further facilitate trypanosome infection establishment by inhibiting that activity of anti-parasitic tsetse lectins [15]. While these theories have never been experimentally proven, they are correlatively validated by the fact that *Sodalis* density

positively correlates with trypanosome infection prevalence [16, 19, 68]. Finally, symbiotic bacteria from the genera *Kosakonia* and *Chromobacterium*, which are found naturally in the midgut of *Anopheles gambiae* and *Aedes aegypti* mosquitoes, produce and secrete reactive oxygen intermediates [69], histone deacetylases [70] and aminopeptidases [71] that exert direct anti-*Plasmodium* and anti-dengue activity.

In conclusion, information about *Sodalis*' heat shock response provides insight into bacterial adaptations that allow symbionts residing within the gut of hematophagous arthropods to survive acute environmental stressors, including heat shock that ensues immediately after their host consumes a meal of vertebrate blood. This information increases our understanding of the physiological mechanisms that facilitate maintenance of bacterial symbioses, which are crucial mediators of host fitness and vector competency.

Supporting information

S1 Fig. Non-coding regulatory elements for *Sodalis dnaK*, *dnaK*, and *grpE* genes. (A) Putative *Sodalis* promoters for the polycistronic *dnaK* and *dnaJ* mRNA and for monocistronic *grpE* mRNA are shown, based on homology to their *E. coli* promoters. Start codons are bolded, the Shine-Delgarno sequence is bolded and italicized, and the σ^{32} binding sites are bolded and underlined. (B) The consensus sequence for the σ^{32} binding site for *E. coli* [72]. (C) A potential secondary structure of the RNA corresponding to the *dnaK*–*dnaJ* intergenic region, generated using RNAfold from the ViennaRNA package [73, 74]. (PDF)

S2 Fig. Comparison of *Sodalis* and *E. coli* heat shock chaperone proteins. Alignment of *Sodalis* DnaK, DnaJ, and GrpE with homologues from *Escherichia coli* MG1665 using Clustal Omega (<https://www.ebi.ac.uk/Tools/msa/clustalo/>). An asterisk (*) indicates positions that have a single, fully conserved residue. A colon (:) indicates conservation between groups that exhibit strongly similar properties, roughly equivalent to scoring > 0.5 in the Gonnet PAM 250 matrix. A period (.) indicates conservation between groups that exhibit weakly similar properties, roughly equivalent to scoring ≤ 0.5 and > 0 in the Gonnet PAM 250 matrix. For DnaK, the boxed residues indicate a glycine (G) that interacts with GrpE, a glutamine (Q) that binds the unfolded protein substrate and an alanine (A) that is involved in synergistic activation of ATPase by DnaJ [75–77]. The overlined residues indicate DnaK amino acids predicted to interact with Mg-ADP [76, 78, 79]. The dashed underline indicates a motif found in DnaK from all gram-negative bacteria that is thought to be essential for ATP-dependent cooperative function with DnaJ and GrpE [80]. The threonine (T) with the dot is required for ATPase activity [81]. For DnaJ, the bracketed residues are conserved residues in the J-domain that interact with DnaK [82, 83]. The underlined residues are zinc-binding motifs that are predicted to bind the unfolded protein substrate [84–86]. The G/F region, which may modulate unfolded substrate binding to DnaK, is boxed, and the DIF motifs within this G/F region, which are involved in regulation of chaperone cycling by modulating a step after ATP hydrolysis [87, 88], are overlined. (PDF)

S3 Fig. Comparison of DnaK proteins from *E. coli*, *Sodalis glossinidius*, and other insect symbionts. Alignment of *Sodalis glossinidius* DnaK with homologues from *Escherichia coli* MG1665 and the insect symbionts using Clustal Omega (<https://www.ebi.ac.uk/Tools/msa/clustalo/>). The species corresponding to the protein accession numbers are as follows: WP_074011646.1, *Candidatus Sodalis* sp. SoCistrobi; KYP97672.1, *Sodalis*-like endosymbiont of *Proechinophthirus fluctus*; WP_025244843.1, *Candidatus Sodalis pierantonius*; WP_067565807.1,

Candidatus Doolittlea endobia; WP_067567978.1, *Candidatus Hoaglandella endobia*; WP_014888228.1, secondary endosymbiont of *Ctenarytaina eucalypti*; WP_067497883.1, *Candidatus Gullanella endobia*; WP_067568929.1, *Candidatus Mikella endobia*; AIN47473.1, *Candidatus Baumannia cicadellinicola*; WP_014888738.1; secondary endosymbiont of *Heteropsylla cubana*; WP_083172452.1, secondary endosymbiont of *Trabutina mannipara*; WP_013975497.1, *Candidatus Moranella endobia*. An asterisk (*) indicates positions which have a single, fully conserved residue. A colon (:) indicates conservation between groups of strongly similar properties, roughly equivalent to scoring > 0.5 in the Gonnet PAM 250 matrix. A period (.) indicates conservation between groups of weakly similar properties, roughly equivalent to scoring = < 0.5 and > 0 in the Gonnet PAM 250 matrix. The boxed residues indicate a glycine (G) that interacts with GrpE, a glutamine (Q) that binds the unfolded protein substrate and an alanine (A) that has been shown to be involved in synergistic activation of ATPase by DnaJ. The overlined residues indicate DnaK amino acids predicted to interact with Mg-ADP. The dashed underline indicates a motif found in DnaK from all gram-negative bacteria which is thought to be essential for ATP-dependent cooperative function with DnaJ and GrpE. The threonine (T) with the dot is required for ATPase activity.

(PDF)

S1 Table. Bacterial strains and plasmids.

(DOCX)

S2 Table. PCR primers used in this study.

(DOCX)

S3 Table. *Sodalis* DnaK homology with other insect symbionts.

(DOCX)

S4 Table. *Sodalis* chaperone genes facilitate elevated temperature survival in *E. coli*.

(DOCX)

S1 References.

(DOCX)

Acknowledgments

We gratefully thank Dr. Bernd Bukau at University Heidelberg for supplying us with strain MC4100Δ*dnaK*. We also thank the students in the Introduction to Biological Thinking class at the University of Richmond in the Fall of 2010 for help with preliminary data acquisition.

Author Contributions

Conceptualization: Laura J. Runyen-Janecky, Brian L. Weiss.

Data curation: Laura J. Runyen-Janecky, Brian L. Weiss.

Formal analysis: Laura J. Runyen-Janecky, Brian L. Weiss.

Funding acquisition: Laura J. Runyen-Janecky, Brian L. Weiss.

Investigation: Jose Santinni Roma, Shaina D’Souza, Patrick J. Somers, Leah F. Cabo, Ruhan Farsin, Laura J. Runyen-Janecky, Brian L. Weiss.

Methodology: Laura J. Runyen-Janecky, Brian L. Weiss.

Project administration: Laura J. Runyen-Janecky, Brian L. Weiss.

Resources: Serap Aksoy, Laura J. Runyen-Janecky, Brian L. Weiss.

Software: Laura J. Runyen-Janecky, Brian L. Weiss.

Supervision: Laura J. Runyen-Janecky, Brian L. Weiss.

Validation: Laura J. Runyen-Janecky, Brian L. Weiss.

Visualization: Jose Santinni Roma, Leah F. Cabo, Laura J. Runyen-Janecky, Brian L. Weiss.

Writing – original draft: Jose Santinni Roma, Laura J. Runyen-Janecky, Brian L. Weiss.

Writing – review & editing: Serap Aksoy, Laura J. Runyen-Janecky, Brian L. Weiss.

References

1. Snyder AK, Rio RV. Interwoven biology of the tsetse holobiont. *J Bacteriol.* 2013; 195(19):4322–30. <https://doi.org/10.1128/JB.00487-13> PMID: 23836873; PubMed Central PMCID: PMC3807475.
2. Wang J, Weiss BL, Aksoy S. Tsetse fly microbiota: form and function. *Frontiers in cellular and infection microbiology.* 2013; 3:69. <https://doi.org/10.3389/fcimb.2013.00069> PMID: 24195062; PubMed Central PMCID: PMC3810596.
3. Doudoumis V, Blow F, Saridaki A, Augustinos A, Dyer NA, Goodhead I, et al. Challenging the Wigglesworthia, Sodalis, Wolbachia symbiosis dogma in tsetse flies: Spiroplasma is present in both laboratory and natural populations. *Sci Rep.* 2017; 7(1):4699. <https://doi.org/10.1038/s41598-017-04740-3> PMID: 28680117; PubMed Central PMCID: PMC5498494.
4. Cheng Q, Aksoy S. Tissue trophism, transmission and expression of foreign genes *in vivo* in midgut symbionts of tsetse flies. *Insect Mol Biol.* 1999; 8(1):125–32. <https://doi.org/10.1046/j.1365-2583.1999.810125.x> PMID: 9927181
5. Pinnock DE, Hess RT. The occurrence of intracellular rickettsia-like organisms in the tsetse flies, *Glossina morsitans*, *G. fuscipes*, *G. brevipalpis* and *G. pallidipes*. *Acta Trop.* 1974; 31(1):70–9. PMID: 4151039.
6. Shaw MK, Moloo SK. Comparative study on Rickettsia-like organisms in the midgut epithelial cells of different *Glossina* species. *Parasitology.* 1991; 102:193–9. <https://doi.org/10.1017/s003118200006248x> PMID: 1852486.
7. Weyda F, Soldan T, Matha V. Rickettsia-like organisms in the tsetse fly *Glossina palpalis palpalis*. *Cytobios.* 1995; 81:223–8.
8. Attardo GM, Lohs C, Heddi A, Alam UH, Yildirim S, Aksoy S. Analysis of milk gland structure and function in *Glossina morsitans*: milk protein production, symbiont populations and fecundity. *J Insect Physiol.* 2008; 54(8):1236–42. <https://doi.org/10.1016/j.jinsphys.2008.06.008> PMID: 18647605
9. Denlinger D, Ma W. Dynamics of the pregnancy cycle in the tsetse *Glossina morsitans*. *J Insect Physiol.* 1974; 20(6):1015–26. [https://doi.org/10.1016/0022-1910\(74\)90143-7](https://doi.org/10.1016/0022-1910(74)90143-7) PMID: 4839338
10. Maltz MA, Weiss BL, O'Neill M, Wu Y, Aksoy S. OmpA-Mediated Biofilm Formation Is Essential for the Commensal Bacterium *Sodalis glossinidius* To Colonize the Tsetse Fly Gut. *Appl Environ Microbiol.* 2012; 78(21):7760–8. Epub 2012/09/04. <https://doi.org/10.1128/AEM.01858-12> [pii]. PMID: 22941073.
11. Mbewe NJ, Mweempwa C, Guya S, Wamwiri FN. Microbiome frequency and their association with trypanosome infection in male *Glossina morsitans centralis* of Western Zambia. *Vet Parasitol.* 2015; 211(1-2):93–8. <https://doi.org/10.1016/j.vetpar.2015.04.027> PMID: 25983231.
12. Wamwiri FN, Alam U, Thande PC, Aksoy E, Ngure RM, Aksoy S, et al. Wolbachia, Sodalis and trypanosome co-infections in natural populations of *Glossina austeni* and *Glossina pallidipes*. *Parasit Vectors.* 2013; 6(1):232. <https://doi.org/10.1186/1756-3305-6-232> PMID: 23924682; PubMed Central PMCID: PMC3751944.
13. Dale C, Welburn SC. The endosymbionts of tsetse flies: manipulating host-parasite interactions. *Int J Parasitol.* 2001; 31(5-6):628–31. [https://doi.org/10.1016/s0020-7519\(01\)00151-5](https://doi.org/10.1016/s0020-7519(01)00151-5) PMID: 11334953.
14. Moloo SK, Kabata JM, Waweru F, Gooding RH. Selection of susceptible and refractory lines of *Glossina morsitans centralis* for *Trypanosoma congolense* infection and their susceptibility to different pathogenic *Trypanosoma* species. *Med Vet Entomol.* 1998; 12(4):391–8. <https://doi.org/10.1046/j.1365-2915.1998.00128.x> PMID: 9824823.
15. Welburn SC, Arnold K, Maudlin I, Gooday GW. Rickettsia-like organisms and chitinase production in relation to transmission of trypanosomes by tsetse flies. *Parasitology.* 1993; 107 (Pt 2):141–5. <https://doi.org/10.1017/s003118200006724x> PMID: 8414668.

16. Aksoy E, Telleria EL, Echodu R, Wu Y, Okedi LM, Weiss BL, et al. Analysis of multiple tsetse fly populations in Uganda reveals limited diversity and species-specific gut microbiota. *Appl Environ Microbiol*. 2014; 80(14):4301–12. <https://doi.org/10.1128/AEM.00079-14> PMID: 24814785; PubMed Central PMCID: PMC4068677.
17. Farikou O, Thevenon S, Njiokou F, Allal F, Cuny G, Geiger A. Genetic diversity and population structure of the secondary symbiont of tsetse flies, *Sodalis glossinidius*, in sleeping sickness foci in Cameroon. *PLoS neglected tropical diseases*. 2011; 5(8):e1281. <https://doi.org/10.1371/journal.pntd.0001281> PMID: 21886849; PubMed Central PMCID: PMC3160304.
18. Griffith BC, Weiss BL, Aksoy E, Mireji PO, Auma JE, Wamwiri FN, et al. Analysis of the gut-specific microbiome from field-captured tsetse flies, and its potential relevance to host trypanosome vector competence. *BMC microbiology*. 2018; 18(Suppl 1):146. <https://doi.org/10.1186/s12866-018-1284-7> PMID: 30470178; PubMed Central PMCID: PMC6251097.
19. Soumana IH, Simo G, Njiokou F, Tchicaya B, Abd-Alla AM, Cuny G, et al. The bacterial flora of tsetse fly midgut and its effect on trypanosome transmission. *J Invertebr Pathol*. 2013; 112 Suppl:S89–93. <https://doi.org/10.1016/j.jip.2012.03.029> PMID: 22841948.
20. Corbin C, Heyworth ER, Ferrari J, Hurst GD. Heritable symbionts in a world of varying temperature. *Heredity (Edinb)*. 2017; 118(1):10–20. Epub 2016/10/06. <https://doi.org/10.1038/hdy.2016.71> PMID: 27703153; PubMed Central PMCID: PMC5176117.
21. Mourino S, Osorio CR, Lemos ML. Characterization of heme uptake cluster genes in the fish pathogen *Vibrio anguillarum*. *J Bacteriol*. 2004; 186(18):6159–67. Epub 2004/09/03. <https://doi.org/10.1128/JB.186.18.6159-6167.2004> PMID: 15342586; PubMed Central PMCID: PMC515166.
22. Russell JA, Moran NA. Costs and benefits of symbiont infection in aphids: variation among symbionts and across temperatures. *Proc Biol Sci*. 2006; 273(1586):603–10. <https://doi.org/10.1098/rspb.2005.3348> PMID: 16537132; PubMed Central PMCID: PMC1560055.
23. Benoit JB, Denlinger DL. Bugs battle stress from hot blood. *Elife*. 2017; 6. Epub 2017/11/22. <https://doi.org/10.7554/eLife.33035> PMID: 29157360; PubMed Central PMCID: PMC5697928.
24. Lahondere C, Lazzari CR. Thermal effect of blood feeding in the telmophagous fly *Glossina morsitans morsitans*. *J Therm Biol*. 2015; 48:45–50. <https://doi.org/10.1016/j.jtherbio.2014.12.009> PMID: 25660629.
25. Bhandari V, Houry WA. Substrate Interaction Networks of the *Escherichia coli* Chaperones: Trigger Factor, DnaK and GroEL. *Adv Exp Med Biol*. 2015; 883:271–94. https://doi.org/10.1007/978-3-319-23603-2_15 PMID: 26621473.
26. Maleki F, Khosravi A, Nasser A, Taghinejad H, Azizian M. Bacterial Heat Shock Protein Activity. *J Clin Diagn Res*. 2016; 10(3):BE01–3. <https://doi.org/10.7860/JCDR/2016/14568.7444> PMID: 27134861; PubMed Central PMCID: PMC4843247.
27. Cowing DW, Bardwell JC, Craig EA, Woolford C, Hendrix RW, Gross CA. Consensus sequence for *Escherichia coli* heat shock gene promoters. *Proc Natl Acad Sci U S A*. 1985; 82(9):2679–83. <https://doi.org/10.1073/pnas.82.9.2679> PMID: 3887408; PubMed Central PMCID: PMC397628.
28. Grossman AD, Straus DB, Walter WA, Gross CA. Sigma 32 synthesis can regulate the synthesis of heat shock proteins in *Escherichia coli*. *Genes Dev*. 1987; 1(2):179–84. <https://doi.org/10.1101/gad.1.2.179> PMID: 3315848.
29. Brooks JF 2nd, Gyllborg MC, Cronin DC, Quillin SJ, Mallama CA, Foxall R, et al. Global discovery of colonization determinants in the squid symbiont *Vibrio fischeri*. *Proc Natl Acad Sci U S A*. 2014; 111(48):17284–9. <https://doi.org/10.1073/pnas.1415957111> PMID: 25404340; PubMed Central PMCID: PMC4260577.
30. Sato S, Ishikawa H. Structure and expression of the dnaKJ operon of *Buchnera*, an intracellular symbiotic bacteria of aphid. *J Biochem*. 1997; 122(1):41–8. <https://doi.org/10.1093/oxfordjournals.jbchem.a021738> PMID: 9276669.
31. Tilly K, Hauser R, Campbell J, Ostheimer GJ. Isolation of dnaJ, dnaK, and grpE homologues from *Borrelia burgdorferi* and complementation of *Escherichia coli* mutants. *Mol Microbiol*. 1993; 7(3):359–69. <https://doi.org/10.1111/j.1365-2958.1993.tb01128.x> PMID: 8459764.
32. Aksoy S. Molecular analysis of the endosymbionts of tsetse flies: 16S rDNA locus and over-expression of a chaperonin. *Insect Mol Biol*. 1995; 4(1):23–9. <https://doi.org/10.1111/j.1365-2583.1995.tb00004.x> PMID: 7538012.
33. Kupper M, Gupta SK, Feldhaar H, Gross R. Versatile roles of the chaperonin GroEL in microorganism-insect interactions. *FEMS Microbiol Lett*. 2014; 353(1):1–10. <https://doi.org/10.1111/1574-6968.12390> PMID: 24460534.
34. Moloo SK. An artificial feeding technique for *Glossina*. *Parasitology*. 1977; 63:507–12.

35. Bursell E, Taylor P. An energy budget for Glossina (Diptera: Glossinidae). *B Entomol Res.* 1980; 70(2):187–96.
36. Dale C, Jones T, Pontes M. Degenerative evolution and functional diversification of type-III secretion systems in the insect endosymbiont *Sodalis glossinidius*. *Mol Biol Evol.* 2005; 22(3):758–66. <https://doi.org/10.1093/molbev/msi061> PMID: 15574807.
37. Pontes MH, Smith KL, De Vooght L, Van Den Abbeele J, Dale C. Attenuation of the sensing capabilities of PhoQ in transition to obligate insect-bacterial association. *PLoS genetics.* 2011; 7(11):e1002349. <https://doi.org/10.1371/journal.pgen.1002349> PMID: 22072980; PubMed Central PMCID: PMC3207850.
38. Toh H, Weiss BL, Perkin SA, Yamashita A, Oshima K, Hattori M, et al. Massive genome erosion and functional adaptations provide insights into the symbiotic lifestyle of *Sodalis glossinidius* in the tsetse host. *Genome Res.* 2006; 16(2):149–56. <https://doi.org/10.1101/gr.4106106> PMID: 16365377.
39. Guisbert E, Yura T, Rhodius VA, Gross CA. Convergence of molecular, modeling, and systems approaches for an understanding of the *Escherichia coli* heat shock response. *Microbiol Mol Biol Rev.* 2008; 72(3):545–54. <https://doi.org/10.1128/MMBR.00007-08> PMID: 18772288; PubMed Central PMCID: PMC2546862.
40. Makumi JN, Green C, Baylis M. Activity patterns in *Glossina longipennis*: a field study using different sampling methods. *Medical and Veterinary Entomology.* 1998; 12(4):399–406. <https://doi.org/10.1046/j.1365-2915.1998.00125.x> WOS:000076933100008. PMID: 9824824
41. Pollock JN. Training Manual for Tsetse Control Personnel. In: Pollock JN, editor. Rome: Food and Agricultural Organization of the United Nations 1982.
42. Agar NS, Sadrzadeh SM, Hallaway PE, Eaton JW. Erythrocyte catalase. A somatic oxidant defense? *J Clin Invest.* 1986; 77(1):319–21. <https://doi.org/10.1172/JCI112294> PMID: 3944256; PubMed Central PMCID: PMC423343.
43. Bolton FJ, Coates D, Hutchinson DN. The ability of campylobacter media supplements to neutralize photochemically induced toxicity and hydrogen peroxide. *J Appl Bacteriol.* 1984; 56(1):151–7. <https://doi.org/10.1111/j.1365-2672.1984.tb04707.x> PMID: 6706882.
44. Dale C, Maudlin I. *Sodalis* gen. nov. and *Sodalis glossinidius* sp. nov., a microaerophilic secondary endosymbiont of the tsetse fly *Glossina morsitans morsitans*. *Int J Syst Bacteriol.* 1999; 49 Pt 1:267–75. <https://doi.org/10.1099/00207713-49-1-267> PMID: 10028272.
45. Benov L, Fridovich I. Superoxide dismutase protects against aerobic heat shock in *Escherichia coli*. *J Bacteriol.* 1995; 177(11):3344–6. <https://doi.org/10.1128/jb.177.11.3344-3346.1995> PMID: 7768839; PubMed Central PMCID: PMC177032.
46. Garenaux A, Jugiau F, Rama F, de Jonge R, Denis M, Federighi M, et al. Survival of *Campylobacter jejuni* strains from different origins under oxidative stress conditions: effect of temperature. *Curr Microbiol.* 2008; 56(4):293–7. <https://doi.org/10.1007/s00284-007-9082-8> PMID: 18180992.
47. Privalle CT, Fridovich I. Induction of superoxide dismutase in *Escherichia coli* by heat shock. *Proc Natl Acad Sci U S A.* 1987; 84(9):2723–6. <https://doi.org/10.1073/pnas.84.9.2723> PMID: 3554246; PubMed Central PMCID: PMC304730.
48. Warnecke T. Loss of the DnaK-DnaJ-GrpE chaperone system among the Aquificales. *Mol Biol Evol.* 2012; 29(11):3485–95. <https://doi.org/10.1093/molbev/mss152> PMID: 22683810.
49. Zmijewski MA, Kwiatkowska JM, Lipinska B. Complementation studies of the DnaK-DnaJ-GrpE chaperone machineries from *Vibrio harveyi* and *Escherichia coli*, both in vivo and in vitro. *Archives of microbiology.* 2004; 182(6):436–49. <https://doi.org/10.1007/s00203-004-0727-8> PMID: 15448982.
50. Boshoff A, Hennessy F, Blatch GL. The in vivo and in vitro characterization of DnaK from *Agrobacterium tumefaciens* RUOR. *Protein Expr Purif.* 2004; 38(2):161–9. <https://doi.org/10.1016/j.pep.2004.06.039> PMID: 15555931.
51. Cellier MF, Teyssier J, Nicolas M, Liautard JP, Marti J, Sri Widada J. Cloning and characterization of the *Brucella ovis* heat shock protein DnaK functionally expressed in *Escherichia coli*. *J Bacteriol.* 1992; 174(24):8036–42. <https://doi.org/10.1128/jb.174.24.8036-8042.1992> PMID: 1459952; PubMed Central PMCID: PMC207542.
52. Keith LM, Partridge JE, Bender CL. dnaK and the heat stress response of *Pseudomonas syringae* pv. glycinea. *Mol Plant Microbe Interact.* 1999; 12(7):563–74. <https://doi.org/10.1094/MPMI.1999.12.7.563> PMID: 10478477.
53. Akman L, Yamashita A, Watanabe H, Oshima K, Shiba T, Hattori M, et al. Genome sequence of the endocellular obligate symbiont of tsetse flies, *Wigglesworthia glossinidia*. *Nat Genet.* 2002; 32(3):402–7. Epub 2002/09/10. <https://doi.org/10.1038/ng986> [pii]. PMID: 12219091.

54. Balmand S, Lohs C, Aksoy S, Heddi A. Tissue distribution and transmission routes for the tsetse fly endosymbionts. *J Invertebr Pathol.* 2013;112 Suppl:S116–22. <https://doi.org/10.1016/j.jip.2012.04.002> PMID: 22537833; PubMed Central PMCID: PMC3772537.
55. Hanawa T, Fukuda M, Kawakami H, Hirano H, Kamiya S, Yamamoto T. The *Listeria monocytogenes* DnaK chaperone is required for stress tolerance and efficient phagocytosis with macrophages. *Cell Stress Chaperones.* 1999; 4(2):118–28. PMID: 10547061; PubMed Central PMCID: PMC312926.
56. Singh VK, Utaida S, Jackson LS, Jayaswal RK, Wilkinson BJ, Chamberlain NR. Role for dnaK locus in tolerance of multiple stresses in *Staphylococcus aureus*. *Microbiology.* 2007;153(Pt 9):3162–73. <https://doi.org/10.1099/mic.0.2007/009506-0> PMID: 17768259.
57. Yamaguchi Y, Tomoyasu T, Takaya A, Morioka M, Yamamoto T. Effects of disruption of heat shock genes on susceptibility of *Escherichia coli* to fluoroquinolones. *BMC microbiology.* 2003; 3:16. <https://doi.org/10.1186/1471-2180-3-16> PMID: 12911840; PubMed Central PMCID: PMC184496.
58. Hrusa G, Farmer W, Weiss BL, Applebaum T, Roma JS, Szeto L, et al. TonB-dependent heme iron acquisition in the tsetse fly symbiont *Sodalis glossinidius*. *Appl Environ Microbiol.* 2015; 81(8):2900–9. <https://doi.org/10.1128/AEM.04166-14> PMID: 25681181; PubMed Central PMCID: PMC4375324.
59. Runyen-Janecky LJ, Brown AN, Ott B, Tujuba HG, Rio RV. Regulation of high-affinity iron acquisition homologues in the tsetse fly symbiont, *Sodalis glossinidius*. *J Bacteriol.* 2010. Epub 2010/05/25. <https://doi.org/10.1128/JB.00161-10> PMID: 20494987.
60. Smith CL, Weiss BL, Aksoy S, Runyen-Janecky LJ. Characterization of the achromobactin iron acquisition operon in *Sodalis glossinidius*. *Appl Environ Microbiol.* 2013; 79(9):2872–81. <https://doi.org/10.1128/AEM.03959-12> PMID: 23435882; PubMed Central PMCID: PMC3623160.
61. Wernegreen JJ. Mutualism meltdown in insects: bacteria constrain thermal adaptation. *Curr Opin Microbiol.* 2012; 15(3):255–62. <https://doi.org/10.1016/j.mib.2012.02.001> PMID: 22381679; PubMed Central PMCID: PMC3590105.
62. Weiss BL, Wang J, Maltz MA, Wu Y, Aksoy S. Trypanosome infection establishment in the tsetse fly gut is influenced by microbiome-regulated host immune barriers. *PLoS pathogens.* 2013; 9(4):e1003318. <https://doi.org/10.1371/journal.ppat.1003318> PMID: 23637607; PubMed Central PMCID: PMC3630092.
63. Rodgers FH, Gendrin M, Wyer CAS, Christophides GK. Microbiota-induced peritrophic matrix regulates midgut homeostasis and prevents systemic infection of malaria vector mosquitoes. *PLoS pathogens.* 2017; 13(5):e1006391. <https://doi.org/10.1371/journal.ppat.1006391> PMID: 28545061; PubMed Central PMCID: PMC5448818.
64. Narasimhan S, Rajeevan N, Liu L, Zhao YO, Heisig J, Pan J, et al. Gut microbiota of the tick vector *Ixodes scapularis* modulate colonization of the Lyme disease spirochete. *Cell Host Microbe.* 2014; 15(1):58–71. <https://doi.org/10.1016/j.chom.2013.12.001> PMID: 24439898; PubMed Central PMCID: PMC3905459.
65. Hegedus D, Erlandson M, Gillott C, Toprak U. New insights into peritrophic matrix synthesis, architecture, and function. *Annu Rev Entomol.* 2009; 54:285–302. <https://doi.org/10.1146/annurev.ento.54.110807.090559> PMID: 19067633.
66. Vigneron A, Aksoy E, Weiss BL, Bing X, Zhao X, Awuoch E, et al. A fine-tuned vector-parasite dialogue in tsetse's cardia determines peritrophic matrix integrity and trypanosome transmission success. *PLoS pathogens.* 2018; 14(4):e1006972. <https://doi.org/10.1371/journal.ppat.1006972> PMID: 29614112; PubMed Central PMCID: PMC5898766.
67. Weiss BL, Savage AF, Griffith BC, Wu Y, Aksoy S. The peritrophic matrix mediates differential infection outcomes in the tsetse fly gut following challenge with commensal, pathogenic, and parasitic microbes. *J Immunol.* 2014; 193(2):773–82. <https://doi.org/10.4049/jimmunol.1400163> PMID: 24913976; PubMed Central PMCID: PMC4107339.
68. Doudoumis V, Alam U, Aksoy E, Abd-Alla AM, Tsiamis G, Brelsfoard C, et al. Tsetse-Wolbachia symbiosis: comes of age and has great potential for pest and disease control. *J Invertebr Pathol.* 2013; 112 Suppl:S94–103. <https://doi.org/10.1016/j.jip.2012.05.010> PMID: 22835476; PubMed Central PMCID: PMC3772542.
69. Cirimotich CM, Dong Y, Clayton AM, Sandiford SL, Souza-Neto JA, Mulenga M, et al. Natural microbe-mediated refractoriness to *Plasmodium* infection in *Anopheles gambiae*. *Science.* 2011; 332(6031):855–8. <https://doi.org/10.1126/science.1201618> PMID: 21566196; PubMed Central PMCID: PMC4154605.
70. Saraiva RG, Huit-Roehl CR, Tripathi A, Cheng YQ, Bosch J, Townsend CA, et al. *Chromobacterium* spp. mediate their anti-*Plasmodium* activity through secretion of the histone deacetylase inhibitor romidepsin. *Sci Rep.* 2018; 8(1):6176. <https://doi.org/10.1038/s41598-018-24296-0> PMID: 29670144; PubMed Central PMCID: PMC5906607.

71. Saraiva RG, Fang J, Kang S, Anglero-Rodriguez YI, Dong Y, Dimopoulos G. Aminopeptidase secreted by *Chromobacterium* sp. Panama inhibits dengue virus infection by degrading the E protein. *PLoS neglected tropical diseases*. 2018; 12(4):e0006443. <https://doi.org/10.1371/journal.pntd.0006443> PMID: 29694346; PubMed Central PMCID: PMC5937796.
72. Yura T, Kanemori M, Morita M. The Heat Shock Response: Regulation and Function. In: Storz G, Hengge-Aronis R, editors. *Bacterial Stress Responses*. Washington, D.C.: American Society for Microbiology Press; 2000. p. 3–18.
73. Gruber AR, Lorenz R, Bernhart SH, Neubock R, Hofacker IL. The Vienna RNA websuite. *Nucleic Acids Res*. 2008; 36(Web Server issue):W70–4. <https://doi.org/10.1093/nar/gkn188> PMID: 18424795; PubMed Central PMCID: PMC2447809.
74. Lorenz R, Bernhart SH, Honer Zu Siederdisen C, Tafer H, Flamm C, Stadler PF, et al. ViennaRNA Package 2.0. *Algorithms Mol Biol*. 2011; 6:26. <https://doi.org/10.1186/1748-7188-6-26> PMID: 22115189; PubMed Central PMCID: PMC3319429.
75. Buchberger A, Schroder H, Buttner M, Valencia A, Bukau B. A conserved loop in the ATPase domain of the DnaK chaperone is essential for stable binding of GrpE. *Nat Struct Biol*. 1994; 1(2):95–101. <https://doi.org/10.1038/nsb0294-95> PMID: 7656024.
76. Kamath-Loeb AS, Lu CZ, Suh WC, Lonetto MA, Gross CA. Analysis of three DnaK mutant proteins suggests that progression through the ATPase cycle requires conformational changes. *J Biol Chem*. 1995; 270(50):30051–9. <https://doi.org/10.1074/jbc.270.50.30051> PMID: 8530409.
77. Zhu X, Zhao X, Burkholder WF, Gragerov A, Ogata CM, Gottesman ME, et al. Structural analysis of substrate binding by the molecular chaperone DnaK. *Science*. 1996; 272(5268):1606–14. <https://doi.org/10.1126/science.272.5268.1606> PMID: 8658133.
78. Buchberger A, Valencia A, McMacken R, Sander C, Bukau B. The chaperone function of DnaK requires the coupling of ATPase activity with substrate binding through residue E171. *EMBO J*. 1994; 13(7):1687–95. PMID: 7908876; PubMed Central PMCID: PMC395000.
79. Holmes KC, Sander C, Valencia A. A new ATP-binding fold in actin, hexokinase and Hsc70. *Trends Cell Biol*. 1993; 3(2):53–9. [https://doi.org/10.1016/0962-8924\(93\)90161-s](https://doi.org/10.1016/0962-8924(93)90161-s) PMID: 14731729.
80. Sugimoto S, Higashi C, Saruwatari K, Nakayama J, Sonomoto K. A gram-negative characteristic segment in *Escherichia coli* DnaK is essential for the ATP-dependent cooperative function with the co-chaperones DnaJ and GrpE. *FEBS Lett*. 2007; 581(16):2993–9. <https://doi.org/10.1016/j.febslet.2007.05.055> PMID: 17544398.
81. McCarty JS, Walker GC. DnaK as a thermometer: threonine-199 is site of autophosphorylation and is critical for ATPase activity. *Proc Natl Acad Sci U S A*. 1991; 88(21):9513–7. <https://doi.org/10.1073/pnas.88.21.9513> PMID: 1835085; PubMed Central PMCID: PMC52748.
82. Qian YQ, Patel D, Hartl FU, McColl DJ. Nuclear magnetic resonance solution structure of the human Hsp40 (HDJ-1) J-domain. *J Mol Biol*. 1996; 260(2):224–35. <https://doi.org/10.1006/jmbi.1996.0394> PMID: 8764402.
83. Szyperski T, Pellicchia M, Wall D, Georgopoulos C, Wuthrich K. NMR structure determination of the *Escherichia coli* DnaJ molecular chaperone: secondary structure and backbone fold of the N-terminal region (residues 2-108) containing the highly conserved J domain. *Proc Natl Acad Sci U S A*. 1994; 91(24):11343–7. <https://doi.org/10.1073/pnas.91.24.11343> PMID: 7972061; PubMed Central PMCID: PMC45227.
84. Banecki B, Liberek K, Wall D, Wawrzynow A, Georgopoulos C, Bertoli E, et al. Structure-function analysis of the zinc finger region of the DnaJ molecular chaperone. *J Biol Chem*. 1996; 271(25):14840–8. <https://doi.org/10.1074/jbc.271.25.14840> PMID: 8662861.
85. Szabo A, Korszun R, Hartl FU, Flanagan J. A zinc finger-like domain of the molecular chaperone DnaJ is involved in binding to denatured protein substrates. *EMBO J*. 1996; 15(2):408–17. PMID: 8617216; PubMed Central PMCID: PMC449956.
86. Pellicchia M, Szyperski T, Wall D, Georgopoulos C, Wuthrich K. NMR structure of the J-domain and the Gly/Phe-rich region of the *Escherichia coli* DnaJ chaperone. *J Mol Biol*. 1996; 260(2):236–50. <https://doi.org/10.1006/jmbi.1996.0395> PMID: 8764403.
87. Cajo GC, Horne BE, Kelley WL, Schwager F, Georgopoulos C, Genevaux P. The role of the DIF motif of the DnaJ (Hsp40) co-chaperone in the regulation of the DnaK (Hsp70) chaperone cycle. *J Biol Chem*. 2006; 281(18):12436–44. <https://doi.org/10.1074/jbc.M511192200> PMID: 16533811.
88. Wall D, Zylicz M, Georgopoulos C. The conserved G/F motif of the DnaJ chaperone is necessary for the activation of the substrate binding properties of the DnaK chaperone. *J Biol Chem*. 1995; 270(5):2139–44. <https://doi.org/10.1074/jbc.270.5.2139> PMID: 7836443.