

The University of Maine

DigitalCommons@UMaine

Maine Women's Publications - All

Publications

8-1-2001

News From Maine vol. 22, nos. 3-4 (Dec. 2000 - Jan 2001)

National Association of Women in Construction - Maine Chapter Staff

National Association of Women in Construction - Maine Chapter

Follow this and additional works at: https://digitalcommons.library.umaine.edu/maine_women_pubs_all



Part of the [Women's History Commons](#)

Repository Citation

Staff, National Association of Women in Construction - Maine Chapter, "News From Maine vol. 22, nos. 3-4 (Dec. 2000 - Jan 2001)" (2001). *Maine Women's Publications - All*. 521.

https://digitalcommons.library.umaine.edu/maine_women_pubs_all/521

This Newsletter is brought to you for free and open access by DigitalCommons@UMaine. It has been accepted for inclusion in Maine Women's Publications - All by an authorized administrator of DigitalCommons@UMaine. For more information, please contact um.library.technical.services@maine.edu.



NAWIC

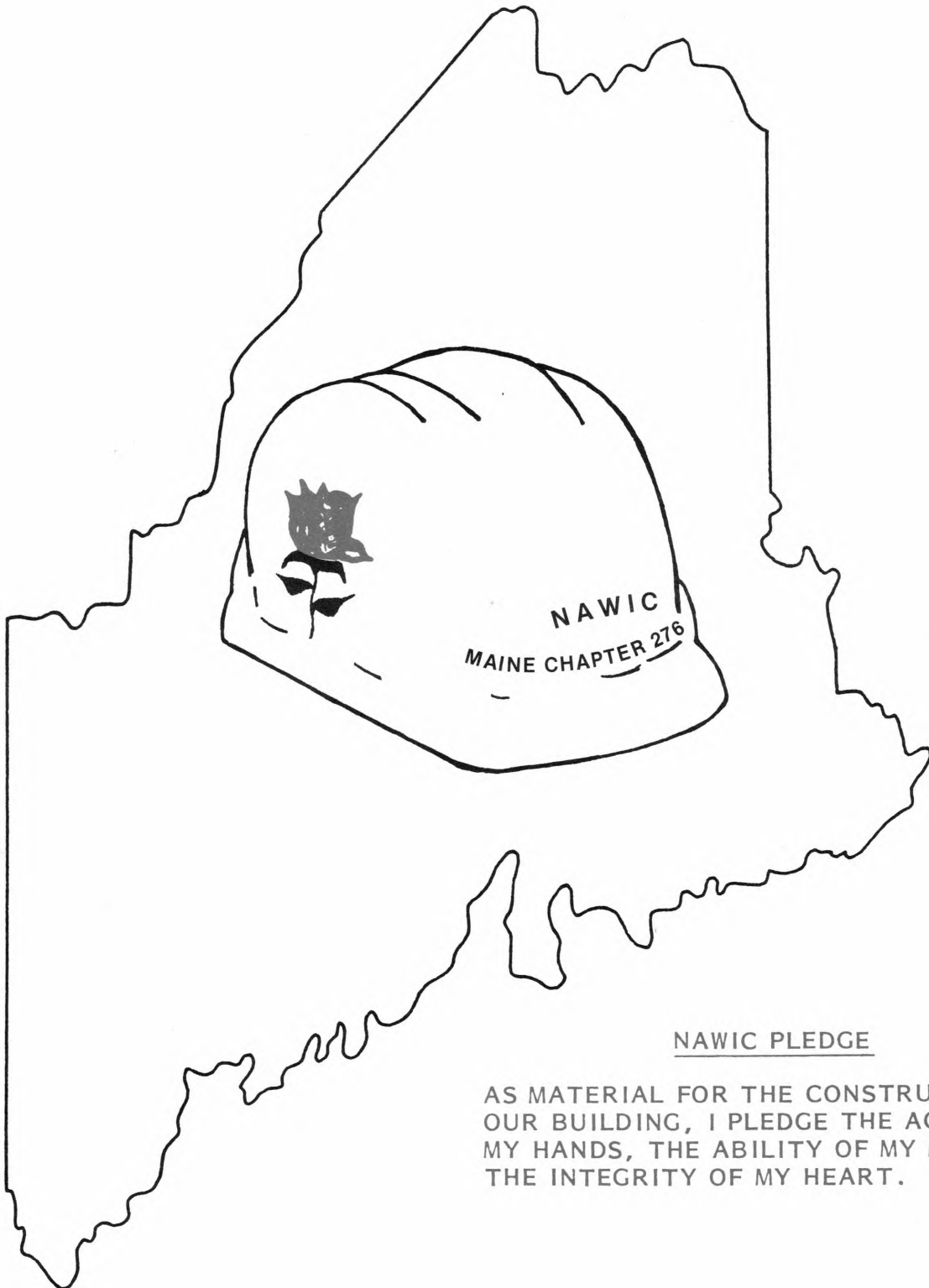
National Association of Women in Construction

SPECIAL COLLECTIONS
PERIODICALS

"NEWS FROM MAINE"

VOLUME 22 NUMBER 3 & 4

December 2000 & January 2001



NAWIC PLEDGE

AS MATERIAL FOR THE CONSTRUCTION OF
OUR BUILDING, I PLEDGE THE AGILITY OF
MY HANDS, THE ABILITY OF MY MIND, AND
THE INTEGRITY OF MY HEART.

Maine Chapter No. 276

2000-2001 Officers

President

Joyce Newman

Vice President

Joy Watkins

Secretary

Marion Thomas

Treasurer

Kelly Stacey

Board of Directors

Ellie Richards Dumond

Jane Henry

Susanne Macomber

Suzanne McLaughlin

2000-2001 New Members

Allyson Blackmore

Rebecca Dostie

Sarah Hammond

Roberta (Bobbi) Harding

Barbara McPheters

Penny Plourde

Past Presidents

Catherine Bryant

Valerie Harmon

Sharon Martel

Barbara McPheters

Joyce Newman

Kelly Stacey

Shelia Stratton

Marion Thomas

Joy Watkins

AND

Nancy Bailey Farrar

Charlotte Eastman

Maria Fuentes

Ruth Gallagher

Claire Kadziauskas

Jeanne Letourneau

Lucinda Long

Julia McBrine

Judith Purington

Kyle Slayback

**Make up the rest of the
Maine Chapter!!!!**

2000-2001 Committees

Annual Meeting

Joy Watkins, Chair

Career Days

Julie McBrine, Chair

Penny Plourde

Nancy Bailey Farrar

Christmas Program

Kelly Stacey, Chair

Maria Fuentes

Construction Expo of Maine

Executive Director

Charlotte Eastman

Finance

Kelly Stacey

Publicity & Promotion

Maria Fuentes

NAWIC Booth

Ellie Richards Dumond

NAWIC Hospitality

Catherine Bryant, Chair

Jeanne Letourneau

Ellie Richards Dumond

Julie McBrine

Name Badges

Val Harmon

Seminars

Julie McBrine

Outside Displays

Joyce Newman

Tickets

Marion Thomas, Chair

Ellie Richards Dumond

Ruth Gallagher

Dinner Meetings

Marion Thomas

Ellie Richards Dumond

Friendship Committee

Marion Thomas

Julie McBrine

Historian

Marion Thomas

Legislative Awareness

Maria Fuentes

Membership

ALL Chapter Members

NAWIC Education

Block Kids

Jeanne Letourneau

Marion Thomas

Newsletter

Joy Watkins

Professional Education

Officers and Directors

Publicity & Promotion

Maria Fuentes

Scholarships

Joyce Newman, Chair

Jeanne Letourneau

Susanne Macomber

Julie McBrine

Ruth Gallagher

Marion Thomas

Ellie Richards Dumond

Jane Henry

Summer Camping Trip

Joy Watkins

Summer Outing

Marion Thomas, Chair

Joy Watkins

Telephone

Charlotte Eastman, Chair

Ellie Richards Dumond

Ruth Gallagher

Sharon Martel

Ways & Means

Jane Henry, Chair

Jeanne Letourneau

Ellie Richards Dumond



NAWIC

National Association of Women in Construction

President's Message

Whether you were one of the people that felt the new millennium truly started in the year 2001 or that we were there in 2000, Happy New (Millennium) Year!!!

Before I go any further, Joy and I apologize for not publishing a newsletter in December. We promise it won't happen again unless things are even more chaotic than they were last month, and I don't think that's possible!!

We are already 25% through our NAWIC year, and finally have most of our committees established and some are already hard at work. As we really get going, don't hesitate to volunteer for an existing committee if you find you have some time on your hands! We hope our new members will also volunteer as they become more acquainted with NAWIC. We have some great potential in our new members, as well as some of Renewing members, and we need their expertise.

November Chapter Meeting

Our November meeting was very well attended, and hopefully, everyone picked up at least one useful suggestion for conserving energy this winter. Our speaker, Chris Carroll, an energy conservation specialist had some interesting suggestions for home and business owners.



Chris Carroll of Maine DECD clicks away at energy conservation!
New member Penny Plourde taking notes.

December Chapter Meeting

A very special thank you to Santa (Jeff) Claus, his able assistant Mrs. (Maria) Claus, and especially to Kelly Stacey who provided our ornaments and treats at the December meeting!! In spite of bad weather and the busy season, we had a good turnout of our members, and two *guests* from Eastern Maine, Brenda King and Ann McDougal. It was a fun evening, and a great chance to test each others cooking talents! The only business conducted was to donate to the WABK Love Fund. A check was dropped off at the radio station, and

we got quite a bit of mileage out of that! Don Brown and Cheryl Mercer said some nice things about "those great ladies that do the Expo and give great scholarships". So, not only did we give to a very good cause, but got some recognition for our two biggest projects.



Santa and Mrs. Claus have to eat too!!!

February Chapter Meeting

Our February meeting will be at Rolandeau's Restaurant in Auburn and the program will feature a panel of our own members, discussing their careers in construction.

Loss of Former Member

We were saddened to learn of the death of one of our former members. Gerri Olson was a member for many years and was our bylaws expert and guardian angel. She kept us on the straight and narrow, and focused. Gerri was very ill for the past few years, and her long time friend, Jane Henry, visited her regularly. Our sincere sympathy go out to Gerri's son and his family, and to Jane.

Women in Construction Week March 4-10

Information arrived this week from the NAWIC Office for local WIC Week Programs. Included were samples of a news release, a poster, camera ready slicks, a planning guide, sample proclamation, media material, and profiles of three women in construction; a business owner, a project engineer and a tradeswoman. Well, we have already profiled the tradeswoman they picked!!! <grin> Nancy Bailey Farrar was profiled in this year's packet that went to every NAWIC Chapter! Nancy, we are very proud of you, and will be honored to profile you again.

It was only four months ago that we held our first Women in Construction Day, and we have just two months before it's time for another one! March should certainly be a better month for this event. This is an opportunity to reach out and encourage women of all ages to consider an education and career in construction. Julie McBrine was very active in the planning and execution of the September event and is

excited about chairing the March WIC Day. We'll be talking more about these plans at our January meeting. Hopefully, every member of the Chapter will find time to help make this a real success.

Members of the Month(s)

Whereas this is a combined December and January newsletter, it's an opportunity to recognize at least two Chapter Members. Actually, it is the absence of two members at our December meeting that prompted me to think of how special they are. Both Jane Henry and Ellie Richards Dumond were planning to attend and were unable to do so. Jane was saying farewell to our friend Gerri Olson, and Ellie was home with her husband Norm, who is undergoing treatments in his battle with cancer. That alone is reason enough to give these women some recognition.



Ellie and Jane enjoying their adventure on the Maid of the Mist during APC in Buffalo

Unlike 9 of our current members, they are not past presidents, but they have been there in support of every one of us. They attend almost all Regional meetings and Jane has attended several NAWIC Conventions. They have co-chaired our 50/50 raffle and ways and means committees almost every year. They set up our Chapter Sales at regional meetings and promote our t-shirts, sweatshirts, fanny packs and nail aprons! They have both served several terms on our Board of Directors. They have served faithfully on the scholarship committee from day one. They "volunteer" to work at Construction Expo. In other words, they are always there, quietly working in the background. For this, we are grateful, and it is members like Jane and Ellie that make a NAWIC Chapter successful. Thank you both!!

And there's one more member that you can't help think of, when you think of Jane and Ellie. Jeanne Letourneau is almost always there working along with them, at chapter functions, regional meetings and when possible, at a NAWIC Convention. Jeanne has also served on the Board and as Chapter Treasurer. Her absence this time of year is also noticeable, which is due to her heavy workload closing out something like 20 business accounts. It's always a relief to us, and more so I'm sure, to her, when all of that is behind her and she can return to NAWIC business. Thank you, too, Jeanne!!

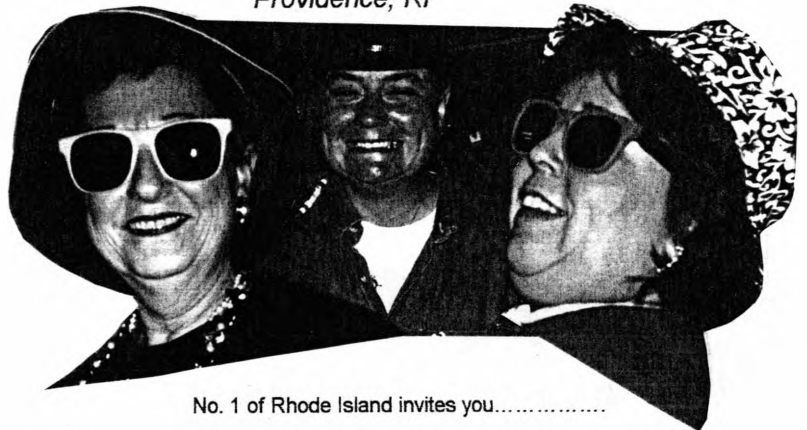
Members Under the Weather

Our thoughts are once again with Shelia Stratton, who is recovering from double surgery. Shelia was home recovering from her first surgery when she was taken back to the hospital for but another round of surgery. Shelia, we are all praying for you and hope your recovery is speedy.

Our thanks to Marion Thomas for delivering a bouquet of roses to Shelia, even though Marion herself is afflicted again with that awful pain in her face. She has had a series of medical problems lately, most of which she has under control, but this recurring problem is pretty discouraging. Let's hope her new doctor can diagnose and treat this so Marion can get back to normal eat normal meals again!!!

Upcoming Meetings

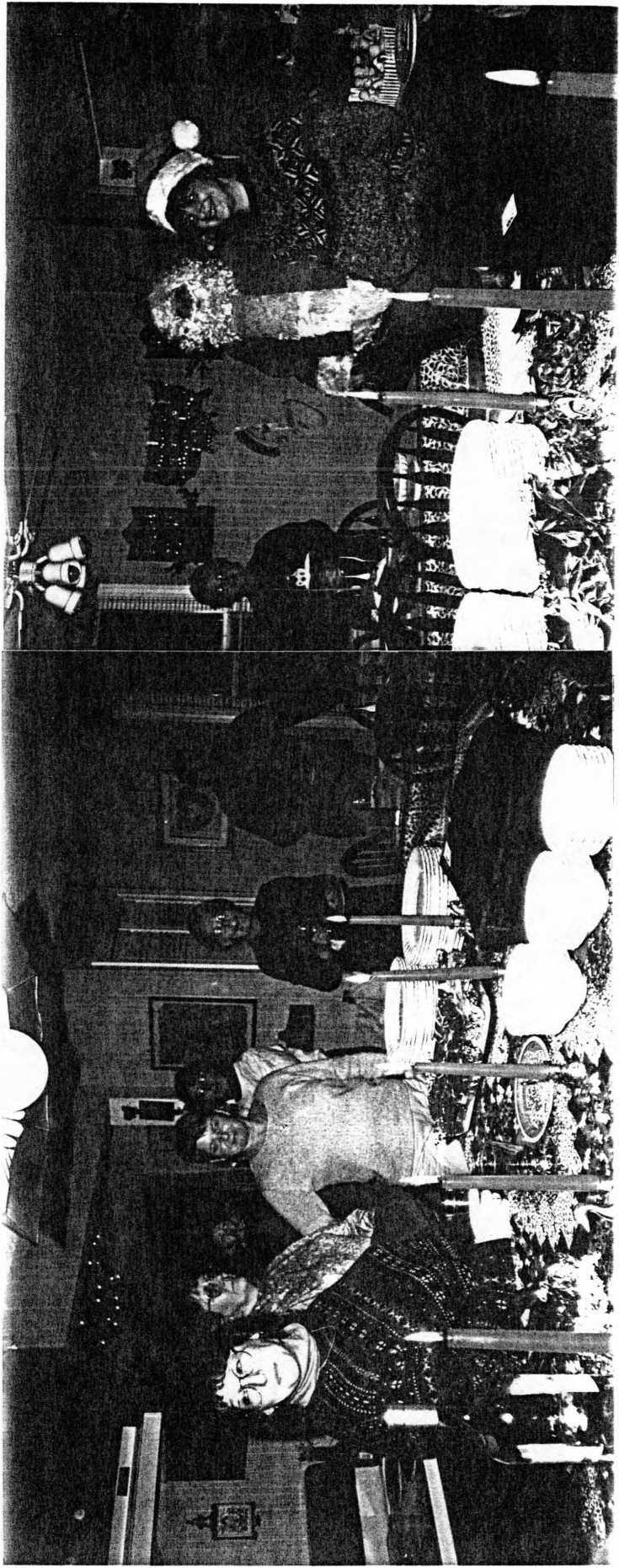
- February 21, Chapter Meeting in Auburn**
NAWIC Panel
- March 3, NAWIC Mid-Year Board Meeting**
- March 4-10, WIC Week**
- March 21, Chapter Meeting in Augusta**
Membership Promotion
- April 11&12, Construction Expo of Maine**
- April 18, Chapter Meeting in Auburn**
Financial Planning
- May 4&5, Region 14 Spring Forum in Providence, RI**



No. 1 of Rhode Island invites you.....

- May 16, Chapter Meeting in Bath area**
Carlton Bridge Job Site Tour
- June 20, Chapter Meeting, Augusta**
Election of Chapter Officers & Board
- July 18, Chapter Summer Outing**
- July or August, Camping Trip**
- August 15, Chapter Annual Meeting**
- September 19, Chapter Meeting in Auburn**
Installation of 2001-1002 Officers & Board
- September 26-29, NAWIC Convention in Anchorage, Alaska*
- October, National Tradeswomen Conference, hosted by Maine DOT, Denver, CO**
- November 3, Region 14 Annual Planning**





NATIONAL ASSOCIATION OF WOMEN IN CONSTRUCTION

REGION 14 NEWSLETTER JANUARY 2001

WENDY J. PHELPS, DIRECTOR

173 PARADISE ROAD EAST AMHERST, NY 716/689-4747 aegean3@juno.com

ON THE NATIONAL SCENE

Bylaws - Two proposed changes to the NAWIC Chapter Bylaws have been circulated to the chapters through the chapter presidents. The NAWIC Board of Directors will vote on the changes by mail ballot after the 90 day circulation period. If these changes have not been discussed at your membership meeting, contact your president for a copy.

Membership Directory - The membership directory is now on line. Go to the NAWIC website, www.nawic.com click on "For Members Only" and you will find a link not only for the membership directory but for the leadership directory as well. If you don't have access to the internet and would like a copy of the directory, make a written request to Misty Overman, Membership Database Coordinator, NAWIC Executive Office.

NAWIC EDUCATION FOUNDATION

NEF has a new address. You can contact the Foundation at 1750 Norwood Drive, Suite 107, Hurst, Texas, 76053. Telephone - 817/282-8321 Fax - 817/282-8430 Toll Free - 866/277-2883

AROUND THE REGION

Did you check out the two articles in THE IMAGE about Region 14 members? Nancy Bailey Farrar, Maine, is featured in "Members Who Take The Challenge" and there is a nice article about Vera Rappazzo, Capital District, who is retiring after 45 years in construction.

At their November membership meeting Granite State Chapter members Connie Snair and Peggy DeWever gave a presentation of the history of NAWIC and a review of NAWIC policies and procedures. A NAWIC Manuel was given to each member .

Hats off to Toronto members Catherine Hofstetter and Doris McKeogh for their work along with other Ontario construction industry organizations in producing "The Future Is Yours To Build", a construction career booklet. The Toronto Chapter was kind enough to send me a copy and I must say it is quite impressive. I will bring it to Fourm to share with you.

The Toronto Chapter made the business news, along with a photo, because of the terrific job they did raising money through their Annual Holiday Auction. With members Shirley Duffy and Elizabeth-Anne Johnson Hersen acting as auctioneers they raised enough money to donate a sizable amount to two Toronto area shelters for women.

Did you know your chapter can have its own web site link on the NAWIC site? Several Region 14 chapters have done this. To check out sites for Boston #15, Buffalo #172, The Granite State #218, and Capital District #261 scroll to the bottom of the NAWIC homepage and click on Helpful Links. If you want to see where Annual Planning 2001 will be held, go to The Granite State Chapter's site. You can "tour" the Hotel, check out the amenities, see the surrounding area attractions, even get a weather report. Great job Granite State.

WELCOME NEW MEMBERS

Boston #15 - Gretchen A. McGill, Mary Kay Smith

No. One of Rhode Island #52 - Katherine G. Chamberlin, Donna M. Deragon

Buffalo#172 - Peggy Dallos, Julie A. Higgins

The Granite State #218 - Linda M. Annis, Sharon C. Hancock, Susan F. Maples, Ellen R. Noyes, Donna M. Tremblay, Donna M. Vallee

Maine #276 - Barbara E. McPheters, Sarah L. Hammond, Roberta J. Harding

Toronto #295 - Marianne P. Fritz, Michele Hecke, Dunja Lackovick, Leslie A. Seaborn, Lola M. Vaz, Monika M. Welzel

Bluenose of Nova Scotia #318 - Donna C. Cooper

Syracuse #328 - Linda L. Lawton

Congratulations to the Toronto chapter which more than doubled its membership. Let us in on your secret!

A STOLEN GEM

From the Gr. Kansas City Mo. chapter's newsletter:

Networking Is All About Building Relationships

Effective networking is not taking advantage of other people. It is not meeting people for the sole purpose of getting what you can from them. It is not using other people like rungs as you climb the ladder of contacts to get to the person at the top. And it is most definitely not one-sided.

So what is effective networking? Perhaps the most encompassing definition is the simplest: Good networking is about building relationships.

Remember that networking relationships are more like the give and take relationships of colleagues and professional acquaintances than the intimacy of a close friend. Some of the relationships you build may develop into friendships, but most won't. That's fine. The purpose isn't to gain a whole new set of friends to have over for dinner every weekend.

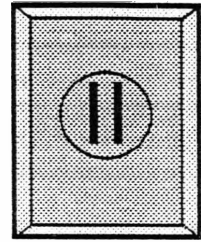
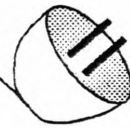
The more people you know, the more connected you will be in your field. And connected people learn about job openings earlier, meet more people at a high level, and know more about their industries. Not coincidentally, connected people are more valuable to their future employers, because they know more about the developments and players in their field.

Knight

Ridder

Newspapers

THE CONNECTION



Promoting and Supporting Women in Construction for 46 Years.

To help leaders and members get plugged in to news from NAWIC

National Association of Women in Construction

www.nawic.org • nawic@nawic.org

Volume 4, January 2001

► Online Membership Directory is Up!

NAWIC's first-ever online membership directory is up and running! Just think. You can now access the online directory from both work *and* home. Simply go to NAWIC's web site and click on the "Membership Directory" link. It's that easy.

The online directory is designed to be as user-friendly as possible. That's why we have provided you with many search capabilities. You can search by company name, member name, chapter name, region number, SIC Codes and keyword. Not only do you have a variety of search options, but the directory will be updated on a biweekly basis. That means you will have access to the most up to date information available.

To access the directory, type in **nawic** for the user id and **idamay** for the password.

If your company is interested in advertising in our online directory, please contact Kathleen Gardner of Naylor Communications at (800) 369-6220. Naylor was in charge of building our online directory.

A limited number of printed membership directories will be available for members who do not have Internet access. To request a printed membership directory, please send a written request to Membership Database Coordinator Misty Overman at misty@nawic.org or fax to (817) 877-0324.

Have suggestions for next year's online directory? Please contact PR/Communications Director Leona Dalavai at (800) 552-3506 or leonad@nawic.org.

► WIC Week 2001 is Almost Here

The fourth annual Women in Construction Week is scheduled for March 4-10. WIC Week was designed to increase the importance and visibility of women in the construction industry. Chapter presidents should be receiving their Women in Construction Week 2001 promotional packets by mid January. Please be on the lookout for them.

This year's packets are filled with information to help you plan and promote this week for maximum publicity and benefit. If you haven't already, please designate a member in your chapter to be in charge of Women in Construction Week activities.

The theme for this year's promotional campaign is "Under Construction ... Building for Tomorrow." We chose this theme for two reasons. First, "Under Construction" relates to the idea that women in this industry have made tremendous strides but still have a long way to go to increase our advancement and acceptance. "Building for Tomorrow" promotes the idea that women play an active role in the industry by helping to build our future.

If chapters still have questions on how to promote this week after reviewing the packets, please contact Leona or Kara in the PR/Communications Dept. at (800) 552-3506. We would be happy to assist any chapters in their promotional efforts.

HOW TO CONTACT THE NAWIC OFFICE:
327 S. ADAMS STREET
FORT WORTH, TX 76104-1081
PHONE: (800) 552-3506 OR (817) 877-5551
FAX: (817) 877-0324
nawic@nawic.org

► CV Application Deadline

The deadline for submitting a nomination for the 2001 Crystal Vision Awards is February 28. All nominations must be postmarked by this date to qualify for the awards program. If you need an application, please visit our web site at nawic.org and click on "What's New." A copy of the 2001 application may be printed from the web site.

The Crystal Vision Awards Program was created to recognize individuals who advance the role of women in construction. The Crystal Vision Award goes to a nonmember of the Association, while the Crystal Achievement Award goes to a member. Winners will be selected by a panel of these three judges: Jenny Erwin, regional administrator (San Francisco) of the Women's Bureau, US Dept of Labor; Dr. Roger Liska, professor and chair of the Dept. of Construction Science and Management, Clemson University; and Bill Tangye, chief executive officer, Southern Building Code Congress International.

NAWIC will announce the national recipients by April 6, and both winners will be recognized with a special video presentation at NAWIC's annual convention on Sept. 29 in Anchorage, Alaska. AGC and also other construction industry association members and personal contacts.

inside

President's Message	2
Regional Roundup	3
Plug-Ins	4
Calendar	5

PRESIDENT'S MESSAGE

Cindy J.
Crawley, CIT

A SPECIAL REQUEST FROM TEXAS A & M

Recently NAWIC was contacted by Texas A & M University, to assist them in identifying 30 women in undergraduate programs in construction management around the country who might be candidates for graduate studies at Texas A & M. This is a great opportunity for NAWIC to be 1) a resource for an industry that needs and has requested our help; 2) assist young women in furthering their education in an industry we all want to see thrive; 3) assist young women to become future managers who will be our peers and maybe even our bosses.

Information will be coming in monthly chapter mailings. In the meantime, if you know of a woman who might be eligible, please contact either myself or Dede Hughes at the NAWIC Office. We will then forward the information to Texas A & M.

STRATEGIC PLANNING COMMITTEE

Your NAWIC Strategic Planning Committee meets the first weekend in January in Dallas. This committee is being chaired by Anne Pernell (Region 1). Serving with her will be myself, Marcia Rackley (President Elect), Linda Litle (Vice President), Patsy White Smith (Region 2 and Past NAWIC President), Nina Mazzarelli (Region 4), Catherine Cotter-Smith (Region 7), Patty Lawson (Region 10), Dodi Walch (Region 8) and Robin Meyers (Region 12).

This team, representing a cross-section of NAWIC, will be putting on their brainstorming caps. We will be setting some very long range (5 to 10 years) goals, objectives and milestones for NAWIC. They will not, however, be planning how we get there. That will be the responsibility of special task forces and your NAWIC Board.

The committee will also be reviewing our current strategic plan and go over such things as: have we accomplished some of the goals in the present plan? do we want to keep the ones we haven't achieved? This committee will then report to the NAWIC Board at the Midyear Board Meeting in March. After your Board reviews and adopts this plan, your regional directors will share the exciting news with you at your Forums, if not before. The best is yet to come!

WIC WEEK

Your NAWIC staff has been working on the promotion information for Women in Construction Week, which will be sent out shortly to all chapters. It's right around the corner, the week of March 4-10. The whole idea around WIC Week is to bring attention to all women in construction (and not just our members). Be proud and bring attention to the fact that you, as a woman in construction, make contributions everyday that help improve the image of our industry.



Happy New Year!

? Did you know...

* Alaskan Fact *

It is impossible to overstate the vastness of Alaska. Consider this less than one percent of Alaska has been developed. Even in the cozy southeast, a narrow panhandle that accounts for only a fraction of Alaska, there are glaciers and rain forests larger than some lower 48 states. Alaska has the highest mountain, biggest glacier, most wilderness, most bald eagles, biggest bears and biggest park.

How Do You Take the Challenge?

I want to know about the kinds of challenges that you have faced, and how you have overcome them. Send your stories (I welcome all kinds) to: Crawley27@aol.com or mail it to the address below

In each issue of *The NAWIC IMAGE*, we will profile members who "Take the Challenge." Be sure to read the next "Take the Challenge" story in the January/February issue of the *IMAGE*.

HOW TO CONTACT THE NATIONAL PRESIDENT:

NAWIC President Cindy J. Crawley, CIT • 8538 Bay Colony Drive • Indianapolis, IN 46234 • Work (317) 229-7400
Home (317) 387-1737 • Fax (317) 229-17410 • Crawley27@aol.com

REGIONAL ROUNDUP



► REGION 2

Kimberly Cameron, CIT

The Montgomery, Ala., Chapter held its annual Executive Appreciation Night in September. Many recognitions were given and officer installations took place. During the evening four scholarships were also awarded to students pursuing construction-related degrees.

► REGION 4

Diana L. Miller

The Annual Planning Conference in Region 4 has come and gone, but there is now a sense of enthusiasm and renewed excitement for members in attendance. Members of Region 4 are definitely ready to take the challenge!

► REGION 6

Nita Thiessen

The Topeka, Kan., Chapter is adopting a new unit of residents at the Kansas Neurological Institute for Christmas again this year — what a nice way to open your hearts.

The Greater Kansas City, Mo., Chapter is gearing up for its annual bowling tournament fundraising event to be held in January. A silent auction will also be held to raise money for NEF.

► REGION 10

Pat McDonald

The holidays were very busy for Region 10 chapters, as I'm sure they were around the country. Chapters were adopting families, raising money for the less fortunate and helping families in shelters. They were reaching out to the community to help those in need. Of course, there were also ornament exchanges, cookie exchanges and

just plain old get-togethers.

In January, Region 10 will be offering the Construction Industry Technician (CIT) course held in conjunction with Clemson University. Let's hope for 30 more CITs in Region 10 — I think we can, I think we can . . .

► REGION 12

Wanda R. Wild

Special thanks to the San Bernardino/Riverside, Calif., Chapter and chairwoman Amy Vasquez for an excellent Annual Planning Conference. One hundred members of the region attended. San Bernardino/Riverside member Kathy Hartman, of Riverside Personnel, was one of the featured speakers with her presentation on Employee and Employer issues.

*During the holidays,
"chapters were adopting
families, raising money for
the less fortunate and
helping families in shel-
ters. They were reaching
out to those in need."
- Pat McDonald, Region 10*

Linda Harris, of the Las Vegas, Nev., Chapter was named one of the top businesswomen in Las Vegas, according to the *Business News* of Las Vegas.

All Region 12 chapters are busy attracting new members, and continuing with great programs and education.

► REGION 14

Wendy J. Phelps

Hats off to the Buffalo, N.Y., Chapter who did such a great job soliciting sponsorships for our APC that we were able to limit the registration to just food costs. Plus, we were able to help the cofers of APC 2001, the NAWIC Building Fund and fund regional programs.

The Rhode Island Chapter has been busy making NAWIC known within the industry. First by conducting a joint meeting with the Rhode Island Builders Association Women's Council, where they forged what is sure to be a productive alliance. Then by sponsoring their Annual Holiday Brunch, which is open to the entire industry. During the brunch, they present an overview of NAWIC and their chapter events. They typically have 180 - 200 people in attendance.

For the sixth year, the Greater Rochester, N.Y., Chapter held a holiday party for the current and past residents of Bethany House, a shelter for women in transition and their children. The chapter members supply and serve food to more than 200 residents. Each child receives a gift that has been purchased by a member just for him/her, from Santa himself. I attended last year's celebration and this year's party and had such a great time seeing the delight on the faces of everyone, especially the children. The Rochester Chapter truly understands the joy of giving.

Toronto Past President Lydia Ledzinsky conducted a tour for her chapter of the Cara Foods Terminal in the new Toronto International Airport, which is under construction. Lydia is project manager for Kenaiden Contracting.



Now at a Computer Near You!!!

Get instant access to the:

NEW Online Membership Directory!

**YOU CAN SEARCH BY THESE
FIELDS:**

- First and Last names
 - First name
- Chapter name
 - Region
- SIC Codes
- Company Name
- Keywords and more!

In December, we premiered a new ONLINE MEMBERSHIP DIRECTORY for the 2000-2001 year! The directory is now accessible directly from NAWIC's web site.

In your membership renewal, you had an opportunity to indicate if you wanted to receive a membership directory. Since we're offering an online directory, we're hoping that members will want to take advantage of the online options. But if you don't have Net access, or you still want to receive a printed directory, please send your request for a printed directory (a limited number of copies are available) in writing to:

NAWIC/ Attn: Misty
327 S. Adams St./Fort Worth, TX 76104
Fax to: (817) 877-0324
Email to: mistyo@nawic.org

► News from the Marketing Corner

By Glenda Thompson ~ Marketing Director

WELCOME TO THE THIRD MILLENNIUM, NAWIC!!

There were many celebrations planned for the year 2000. Much attention was given to celebrating the end of the second millennium. This year we should acknowledge the start of a new millennium: 2001. And as the entire world welcomes the start of the third millennium, NAWIC is preparing for the start of new and greater opportunities for women in the construction industry.

In my brief time here, I have discovered a massive industry that covers a variety of expertise and knowledge. If Department of Commerce projections are on target, construction worldwide will remain a dominant force. Naturally, because the construction pie is so big, there is a great deal of competition for recognition. I applaud NAWIC for taking steps to ensure that the organization gets its fair share of recognition through an aggressive marketing program.

We continue to align ourselves with major associations, events and causes — all in an effort to educate the public about the value of women in the construction industry. "Valuable" is really an understatement. Projections indicate that to maintain the current level of construction, the industry will need thousands to fill positions at all levels by 2008. These numbers show a missing element in the industry: the presence of young talent and women.

NAWIC is already ahead of the game by having programs in place to attract young people (men and women) through the programs offered by the NAWIC Education Foundation. We are also taking an active role in a series of Construction Career Day Expos, attracting thousands of high school students.

These are stories that need to be shared with the larger population. And that is really the heart of the marketing effort: to not only tell the story but to assure all interested parties that reinforcements are on the way. NAWIC is also technically prepared to handle the elements of global interaction and communication.

There will be questions about a variety of issues as we move into the third millennium, but one thing is for certain: NAWIC is well prepared to deal with whatever the millennium dishes out.

► Never Too Late to Renew Your Membership

Just because the Oct. 31 postmark deadline for turning in membership renewals has passed, that doesn't mean that you still can't renew. If you know of members who haven't renewed for the 2000-2001 year, please encourage them to turn in their renewal. Since it is past the postmark deadline, they must pay a \$15 late fee to keep their original join date.

Remember: Send renewals and new member applications directly to the NAWIC Office for processing. Chapter treasurers will then receive a check every two weeks from the NAWIC Office reimbursing chapters for their portion of the membership dues. This is the first year for this new method of collecting dues, and with your cooperation, it is going smoothly. If you have any questions about the dues collection process or renewals, please contact Membership Director Lisa Simonds at (800) 552-3506 or lisas@nawic.org.

The Connection is published monthly by
the NAWIC Office at 327 S. Adams St., Ft. Worth,
TX 76104 ~ (800) 552-3506 ~ Fax (817) 877-0324

Email: leonad@nawic.org

Newsletter Editor: Leona P. Dalavai

Assistant Editor: Kara D. Roberson

Send submissions to the NAWIC Office by the
10th of every month.

► Special Offer from WorkingWoman.com

To welcome NAWIC members, Working Woman.com, one of the NAWIC's newest partners, is extending a special offer for magazine subscriptions. As a NAWIC member, you can subscribe for 50 percent off!

That means you can subscribe to WorkingWoman for one year at a rate of \$7.50 or two years for only \$15! You can also have the option of subscribing to Working Mother at a rate of \$6.50 a year or two years for only \$13.

To take advantage of this offer, please contact WorkingWoman at (800) 234-9675 or Working Mother at (800) 627-0690. The offer code is 012. Subscriptions to these publications would make a great gift for the new year.

► Support our Member Services

The next time you want to overnight a letter or package and get ready to call FedEx, consider using Airborne Express instead. Airborne is one of NAWIC's member services. What that means is we have an agreement to promote a particular service or product to our members at a discounted price in exchange for a small royalty fee. The fees go back to support NAWIC and its programs.

For a complete listing of our member services, please refer to page five of any issue of *The NAWIC IMAGE* or the "For Members Only" section of NAWIC's web page. To access this password protected site, type in **nawic** for the user id and **idamay** for the password.

You will be amazed at the savings you can get on office products, moving services, publications, MBNA credit cards and other products and services.

► Addition to Committee Chair List

In the November *Connection*, we listed the chairs of various NAWIC committees and task forces. Please add Miriam Cala as the chair of the student task force to your list. She was left off.

CALENDAR

January 1

- NAWIC Office closed for New Year's.

January 5-7

NAWIC Strategic Plan Meeting, Fort Worth, Texas

January 31

- IRS Compliance Forms are due to the NAWIC Office.

March 4-10

- 4th Annual Women in Construction Week

ANNUAL FORUMS

April 6-7

- Region 5, Lake Charles, La.
- Region 9, Portland, Ore.
- Region 13, Chicago, Ill.

April 20-21

- Region 2, Birmingham, Ala.
- Region 4, Louisville, Ken.
- Region 6, Wichita, Kan.
- Region 7, Austin, Texas

April 27-28

- Region 3, Cocoa Beach, Fla.
- Region 10, Stockton, Calif.
- Region 11, Roanoke, Va.

April 27-28

- Region 1, Hartford, Conn.
- Region 8, Colorado Springs, Colo.
- Region 12, Los Angeles, Calif.
- Region 14, Providence, R.I.

June 21

- Postmark deadline for all election ballots



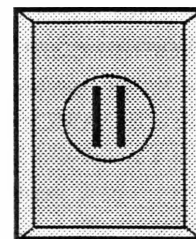
Mission Statement

NAWIC is an international association that promotes and supports the advancement and employment of women in the construction industry.

Mark Your Calendars! Women in Construction Week is March 4-10, 2001.

Chapter presidents will be receiving promotional packets by mid January. Since WIC Week is earlier than usual this year, please have your committee in place to organize special events during this week. Questions? Call the PR/Communications Department at (800) 552-3506.

THE CONNECTION



Promoting and Supporting Women in Construction for 46 Years.

To help leaders and members get plugged in to news from NAWIC

National Association of Women in Construction

www.nawic.org • nawic@nawic.org

Volume 4, December 2000

► NAWIC Career Center Seeks Job Listings

To make the Online Career Center a real benefit to NAWIC members and employers alike, the NAWIC Office needs your help in gathering employment opportunities. If your employer or company has job opportunities available that would be of interest to our membership, please contact Melinda Holland at the NAWIC Office.

The Career Center listing rates are:

- NAWIC Member - \$75
- Members of Partnering Groups - \$100
- Non-Members - \$150
- Corporate Affiliates - FREE!

All job listings will be posted for two weeks, unless renewed.

For each employment listing, please include: job title, description of position (100 words or less), contact information and deadline for submitting resumes. Applicants should send resumes directly to the employer, and not NAWIC. If you have further questions, call Melinda at (800) 552-3506, ext. 22.

► Tell Us When You're Moving

If you move, change jobs, get a new area code or all of the above, be sure to pass along your new contact information to us. Fax changes to Misty Overman at (817) 877-0324; email her at misty@nawic.org or send to NAWIC/327 South Adams Street/Fort Worth, TX 76104-1081. Keep in touch so you won't miss receiving *The NAWIC IMAGE*, convention promo and other mailings from the NAWIC Office. Thanks!

► Chapter Best Practices

As most of you know, we are spotlighting "Chapter Best Practices" in the Regional Roundup section each month. We thought that this best practice idea deserved some extra attention.

Region 2 Director Kimberly A. Cameron, CIT of the Atlanta, Ga., Chapter suggested chapters hold a Membership Information Breakfast in conjunction with their recruitment efforts.

Holding a breakfast is an excellent way to inform women working in the construction industry about NAWIC. Since it's held in the morning, prospective members spend a structured hour networking and receiving general information.

Making Contact

There are three good ways to inform the public about the breakfast. The first and most effective way is by broadcast fax; the second is by postcard; and the third is a press release. Send faxes/postcards to associations like ABC and AGC and also other construction industry association members and personal contacts.

Depending on the size of your metropolitan area, expect to send between 300 and 500 faxes or postcards. Remember to have your guests RSVP by a certain date so you know how many to expect. Be prepared to get calls from interested women who cannot attend the breakfast, but still want information regarding NAWIC.

HOW TO CONTACT THE NAWIC OFFICE:
327 S. ADAMS STREET
FORT WORTH, TX 76104-1081
PHONE: (800) 552-3506 OR (817) 877-5551
FAX: (817) 877-0324
nawic@nawic.org

Networking

Be sure to have enough chapter members in attendance to mingle and network with the guests. You can also schedule games and activities to break the ice. This would be an excellent time to present information about NAWIC in general, its history and its mission.

The Program

Networking should begin around 7:30 a.m. and continue for about half an hour to allow for stragglers. The program should begin about 8:00, with a welcome from the membership chair. Next, NAWIC members can stand, introduce themselves and tell about their experiences in the association. Guests may then introduce themselves as well. The membership process can be explained, and door prizes can also be awarded. The program should conclude promptly at 8:30.

Chapters are encouraged to hold an information breakfast rather than the typical evening "wine and cheese" event. Everyone is fresh and alert in the morning, and the program is concise and informative.

inside

President's Message	2
Regional Roundup	3
Plug-Ins	4
Calendar	5

PRESIDENT'S MESSAGE

Cindy J.
Crawley, CIT

Happy Holidays NAWIC Members and Staff! It's hard to believe the holidays are almost here. But we always say that, don't we? As they approach, NAWIC's sense of community spirit resonates throughout the various community-sharing projects. It would be interesting to accumulate the "total" contributions our members make, but so much of it is intangible. And since we do it out of love and caring, who cares what the total is anyway. I do know this: it would be gigantic in any measure. Thank you for all of your charity and generosity.

It's a Sunday and I'm writing this article for the December Connection. I'm wondering what profound thing I have to share with you and wondering even more if anyone will read it (just kidding!) I'm in my den, which I appropriately call the "NAWIC Room." It is filled with NAWIC stuff: pictures of great memories, friends, special events, bad hair days, newsletters and associated articles to read. And to top things off, they are neatly filed by piles. I'm sure you can relate.

Writing is not one of my talents: it's not something that comes easy for me. It probably takes me 10 times longer than most of you to write something, anything. I can find a million things to do while I'm trying to write. Eat, do laundry, get something to drink, answer emails or fiddle with my hair. I wish we could just sit and talk instead of me presenting this one-way conversation with you. Your feedback is important to me so always feel free to send me an email and share your thoughts.

I have no profound NAWIC business to discuss this month, only to wish you the happiest of holidays. Merry Christmas, Happy Hanukkah and Happy Holidays! — Cindy

DISCUSSION UPDATE

Recently some of you have had the opportunity to express your views on several topics involving convention and Annual Planning Conferences. Here are some things you brought up.

For Convention —

- The Wednesday night party will continue to be full of surprises. This event was never in jeopardy. We just wanted to see how members viewed the event and what we could do to make it better.

- Regional photos will not be a scheduled convention event. Regions will individually schedule times with the convention photographer.

- Regarding what will replace the Q&A session for Candidates running for office — yet to be decided.

For APC —

- Whether or not to make APC an optional meeting will be decided at the Midyear Board Meeting.

Thanks for your input! For the members who didn't know about some of these issues — due to your APCs being early in the year — your director spoke on your behalf.

CHAPTER PRESIDENTS

To all chapter presidents with email: I've been sending monthly emails to you (two to date). If you haven't gotten either one, it's because I don't have your correct address. Please email me at Crawley27@aol.com with your current email address. Thanks!

? Did you know...

* Alaskan Fact *

Plan on spending more time than usual traveling by air to next year's convention in Anchorage. From Atlanta/New York, it's around 9-10 hours, from Denver, about 6-7 hours, Miami, 10-11 hours. Almost all of Alaska is in the Alaska Time Zone, which is one hour earlier than Pacific Time.

How Do You Take the Challenge?

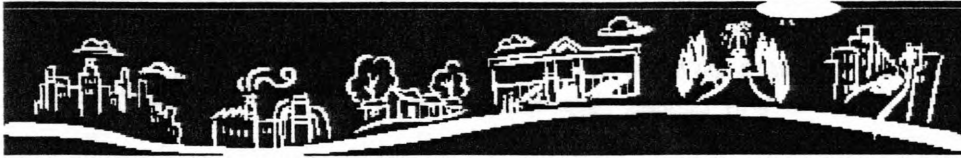
I want to know about the kinds of challenges that you have faced, and how you have overcome them. Send your stories (I welcome all kinds) to: Crawley27@aol.com or mail it to the address below.

In each issue of *The NAWIC IMAGE*, we will profile members who "Take the Challenge." Be sure to read Nancy Bailey-Ferrari's story in the November/December issue of the *IMAGE*.

HOW TO CONTACT THE NATIONAL PRESIDENT:

NAWIC President Cindy J. Crawley, CIT • 8538 Bay Colony Drive • Indianapolis, IN 46234 • Work (317) 229-7400
Home (317) 387-1737 • Fax (317) 229-17410 • Crawley27@aol.com

REGIONAL ROUNDUP



► REGION 1

Mary Ann Scott

Student memberships are a great addition to a chapter. The mentoring that occurs is invaluable to the student, and the chapter gains access to future women in the construction work force. The Long Island, N.Y., Chapter has found that their student members have been quite active and have made a difference.

As their participation increased, the lack of voting rights on the part of the student members became an issue. Without a major restructuring to the student membership classification, there was no solution to this problem in sight. Their chapter used "out-of-the-box" thinking to find an answer.

Once a student meets participation guidelines established by the chapter, active members secure a sponsor for the student who funds the increase in dues to bring a student's classification up to an active classification. Voila! A young woman who is a contributing member to her chapter is now able to have a voice in chapter activities. What a great solution!

► REGION 3

Mary Anne Upham, CCA, CIT

Thumbs up to Gwen Blackwell, immediate past president of the Southwest Florida Chapter. When she received the press release last August promoting Women in Construction Week, she sent it to local media, along with a full-page profile on four outstanding members in her chapter. The chapter got coverage in about eight newspapers, with personal interviews and pictures, plus a spot on the 6 o'clock news. This once again proves that if you take the time and make the effort, you can get great results!

► REGION 5

Sherry Jagers

Annual Planning Conference has come and gone but not without tremendous enthusiasm from those who attended. We had a record 64 people in attendance, and it appears everyone left with a renewed sense of excitement for NAWIC. All chapters are actively seeking new members and took back information they could share in the process. Good luck in your recruitment efforts. I know it's going to be a success.

President Cindy Crawley, CIT has asked us to *Take the Challenge*. Region 5 is up to the task. I see this being a record-breaking year for new members in Region 5.

A special thanks to all who made Susan McGreevy, NAWIC Legal Counsel, feel welcome at APC. Her ideas and upcoming challenges of Construction Design/Build projects were most informative. This is one Annual Planning Conference that gave everyone involved something to take back to their employer.

► REGION 7

Barbara Burleson

Twelve members of the Fort Worth Chapter, led by Barbara Morgan, built a children's playhouse as their construction industry project. The playhouse was a grocery store. Jo Murphy loaned her home, tools and supervision to these women who worked for several Saturdays to complete the project. The playhouse was displayed at a shopping mall, and was later auctioned with proceeds going to Child Advocates of Tarrant County. The playhouse, along with three others, were auctioned off for a total of \$30,000. The gentleman who won

had no children so he donated the playhouse to Women's Haven, a home for battered women and their children. Congratulations to these fine ladies for this wonderful project! Another playhouse is in the works for the 2000-2001 year.

► REGION 11

Sue C. Cline

Thanks to the Myrtle Beach, S.C., Chapter members for a wonderful and well-planned fall conference. You have made me very proud as a member of this chapter and as director of Region 11. Under the watchful eyes of Conference Coordinator Tommie Woods and Co-Chair Beverly Hall, the chapter really made this conference a success. We had the largest number of members in attendance in 34 years!

I appreciate everyone's support this past year and look forward to working with each of you in the upcoming year. With a team like this, how can I go wrong?!

► REGION 13

Jean E. McAdam

While surfing the web recently, I came across a site for a large construction company with a link titled "What We Build." Once I clicked on the link, it told me they "Build Relationships." Isn't that what all of us do everyday? We are builders.

Some relationships are weak; others strong. The strength of any structure comes not only from the quality of the materials, but also the quality of the construction process. So, too, the strength of our relationships comes from the quality of what we put forth in developing them. What kind of builder are you?

PLUG-INS



Coming to a Computer Near You!!

Get instant access to the:

NEW Online Membership Directory!

YOU CAN SEARCH BY THESE
FIELDS:

- *Last name*
- *First name*
- *Chapter name*
 - *Region*
- *SIC Codes*
- *and more!*

In December, we will be providing you with an ONLINE MEMBERSHIP DIRECTORY for the 2000-2001 year! The directory will be accessible directly from NAWIC's web site.

In your membership renewal, you had an opportunity to indicate if you wanted to receive a membership directory. Since we're offering an online directory, we're hoping that members will want to take advantage of the online options. But if you don't have Net access, or you still want to receive a printed directory, please send your request for a printed directory (a limited number of copies are available) in writing to:

NAWIC/ Attn: Misty

327 S. Adams St./Fort Worth, TX 76104

Fax to: (817) 877-0324

Email to: misty@nawic.org

► News from the Marketing Corner

By Glenda Thompson ~ Marketing Director

Partnerships are extremely important to the marketing effort of any organization. NAWIC is no different.

Partnership with Habitat for Humanity

Our partnership with the Habitat for Humanity International's (HFHI) Women Build Program promises to be a source of national prominence. A new project called "Women Building Legacies" will be launched in May, and we hope to align ourselves with local affiliates to participate. The intent is to build 100 houses in one week throughout the country. Does this sound like a NAWIC natural or what? Once the list of HFHI affiliates is compiled, we will begin to match NAWIC chapters with HFHI affiliates to determine involvement at the chapter level.

Partnerships with Trade Publications

We are also continuing to build partnerships with trade publications. Trade publications offer a major source of free national exposure. We can position ourselves for editorial coverage based on the region, the current hot construction topics or events such as WIC week. I've already received lists of major publications that some of you are working with. This kind of information will strengthen our approach.

Partnerships with Tradeshows

NAWIC is embarking on a journey of partnering with multi city tradeshows. Our very presence at these events is increasing visibility and awareness. From time to time, we will be adjusting the line up of shows so that we can get total exposure throughout the country.

How Can You Be Involved?

Last but certainly not least, I would like to solicit your support in a partnership of involvement. We want to market NAWIC, but your assistance is needed. For chapters with Public Relations, Publicity or community service committees, please forward a copy of your plans for the year to my attention. By having this information early, we can implement a media plan to help you promote your activities. If you do not have a committee established, why not implement one? It is a great way to keep your local chapter involved and in the news.

Finally, don't forget the most important partnerships — those with co-workers, family members and friends. Holidays are always good times to put all of these connections in perspective. Wishing you all a very happy holiday season.



Happy Holidays!

The Connection is published monthly by the NAWIC Office at 327 S. Adams St., Ft. Worth, TX 76104 ~ (800) 552-3506 ~ Fax (817) 877-0324

Email: leonad@nawic.org

Newsletter Editor: Leona P. Dalavai

Assistant Editor: Kara D. Roberson

Send submissions to the NAWIC Office by the 10th of every month.

► CV Apps Coming Soon

Look for the new Crystal Vision Applications after December 1. The application will be sent to chapter presidents, and can also be accessed on our web site under the "What's New" section. NAWIC gives two Crystal Vision Awards nationally each year. The Crystal Vision Award is given to a nonmember of NAWIC, and the Crystal Achievement Award is given to a member of the association. If you need additional copies of the application, please contact the PR/Communications Department at (800) 552-3506.

► IRS Compliance Forms

The 1999-2000 chapter treasurers should prepare the 990 form and mail it to the IRS, if required. The IRS compliance forms are due to the NAWIC Office by Wednesday, January 31, 2001. Do it now so you don't forget! Send the forms to Bookkeeper Kerri Crawford's attention. Thanks!

► Pinnacles, Calif., Chapter Chartering

NAWIC continues to grow by leaps and bounds with the chartering of The Pinnacles #363 Chapter on October 7, 2000. The newest chapter is located in Region 10 in the Pinnacles Mountain Range (in northern California) and currently has 25 members.

You can send messages of congratulations to Chapter President Ellen Larson at: The Granite Rock Company, P.O. Box 50001, Watsonville, CA, 95077. Or, email her at clarson@graniterock.com.

Welcome to The Pinnacles Chapter!

*The NAWIC Staff wishes you a joyful
Holiday Season!*

Lisa	Dede	Misty
Kara	Kerri	Leona
Glenda	Melinda	Janice

CALENDAR

November 23-24

- NAWIC Office closed for Thanksgiving holiday.

November 30

- Cutoff deadline for NAWIC Membership Directory. We must receive your membership renewal or new member application by this date to be listed in the printed directory.

December 1

- Crystal Vision Applications will be available. They will be sent out to chapter presidents, and will also be accessible online under the "What's New" section.

December 10

- Deadline for January 2001 *Connection*.

December 15

- Copy deadline for January/February 2001 issue of *The NAWIC IMAGE*. **Even-numbered Region Directors:** Please send in your photos for the Forum preview issue.

December 22 & 25

- NAWIC Office closed for Christmas.

January 1, 2001

- NAWIC Office closed for New Year's.

January 31, 2001

- IRS Compliance Forms are due to the NAWIC Office.



Mission Statement

NAWIC is an international association that promotes and supports the advancement and employment of women in the construction industry.

Mark Your Calendars! Women in Construction Week is March 4-10, 2001.

Chapter presidents will be receiving promotional packets by mid January. Since WIC Week is earlier than usual this year, please have your committee in place to organize special events during this week. Questions? Call the PR/Communications Department at (800) 552-3506.

This page was last updated: December 1, 2000

NAWIC

National Association of Women in Construction

MEMBER SERVICES

*Call a member service today and find out how
you can save your company money!*

IBM products at discounted prices!

NAWIC members can now purchase high quality IBM products at discounted prices through the IBM affinity Marketing Program.

IBM has a full line of technology products designed with small and medium businesses in mind. The IBM Products featured under the program include Aptiva desktops, select Thinkpad laptops, printers, scanners and more. Product discounts offer savings up to 7 percent off IBM's direct sales prices.

Members may take advantage of the discounts by calling 1-800-426-7235, Ext. 5230. Questions can also be directed to our IBM contact, Vicki White, at (781) 895-2636 or vgwhite@us.ibm.com.

Products can be shipped directly to homes or offices.



Car Rental:

Alamo Rent-A-Car

(800) 354-2322

Discount Code: 250798

Discounts on car rentals.

Hertz Rental

(800) 654-2210

Discount Code: 407324

Discounts on car rentals.



Checks:

Civic-Check of Paragon Enterprises

(800) 325-1994



Legal:

Pre-Paid Legal Services

(800) 715-1603

Affordable legal services.



Office Products:

Penny Wise Office Products

(800) 942-3311

Discount Code: NWC

Discounts on office supplies.

Special Prices on NAWIC Checks.



Computer Products:

IBM

(800) 426-7235 x5230

Discounts on computers and accessories.



Credit:

VISA through MBNA

(800) 847-7378

Credit card with special interest rates.



Education:

NAWIC Education Foundation

(817) 877-3943

Discounts on textbooks.



Employment:

NAWIC Career Center



Express Mail:

Airborne Express

(800) 289-2776

Discount Code: N2*Y007

Discounts on overnight and two-day express mail.



Publications:

EEO BiMonthly

(847) 475-8800

Special member rates.

Engineering News-Record Subscriptions

(888) 867-6395

Discount Code: NAW9909

The NAWIC Image

(800) 654-2210

Special member rates.

PC Novice/PC Today

(800) 422-8855

Special member rates.

The Contractors Management Journal & The Management Letter

(800) 877-1364

Special member rates.

Working Woman Magazine

(800)234-9675 offer code - 012

Special member rates.

Working Mother Magazine

(800)627-0690 offer code - 012

Special member rates.



Purchasing:

Equal Footing

1-877-55-EQUAL

1-877-553-7825

www.equalfooting.com



Travel & Recreation:

Anheuser-Busch

Call the NAWIC Office

Discounts on recreation.

Quest Hotel Savings Program

NAWIC OBJECT

TO UNITE FOR THEIR MUTUAL BENEFIT, WOMEN WHO ARE ACTIVELY EMPLOYED IN THE VARIOUS PHASES OF THE CONSTRUCTION INDUSTRY,

TO PROMOTE COOPERATION, FELLOWSHIP AND A BETTER UNDERSTANDING AMONG MEMBERS OF THE ASSOCIATION,

TO PROMOTE EDUCATION AND CONTRIBUTE TO THE BETTERMENT OF THE CONSTRUCTION INDUSTRY,

TO ENCOURAGE WOMEN TO PURSUE AND ESTABLISH THEIR CAREERS IN THE CONSTRUCTION INDUSTRY, AND

TO PROVIDE MEMBERS AN AWARENESS OF THE LEGISLATIVE PROCESS AND LEGISLATION AS IT RELATES TO THE CONSTRUCTION INDUSTRY.

(207) 725-4394

THE JAY-KAY SALES CO. INC.
P.O. BOX 336/RT. 196
TOPSHAM, MAINE 04086
FAX # (207) 729-3598

JK
Sales Inc.



Professional Concrete Construction Specialties

This space available
12 months for \$12.00

Reserve this space NOW!!



NAWIC
National Association of
Women in Construction
Maine Chapter #276

Marion Thomas

W.S. Williams Const. Co. Inc.
RFD #5 Box 100
Gardiner, Maine 04845
c/o. 562-6162 home 562-5730

**NATIONAL ASSOCIATION OF WOMEN IN CONSTRUCTION
MAINE CHAPTER NO. 276
BUSINESSES REPRESENTED BY CHAPTER MEMBERS**

BACHMANN INDUSTRIES, INC.
CIAMBRO CORPORATION
CUMBERLAND CODES ENFORCEMENT
HAMMOND LUMBER CO.
THE JAY-KAY SALES COMPANY
MAINE BETTER TRANSPORTATION ASSOCIATION
MAINE DEPARTMENT OF TRANSPORTATION
MAINE DRILLING & BLASTING, INC.
MAINE FOREST PRODUCTS COUNCIL
MITCHELL'S ROOFING & SHEET METAL
MORSE, PAYSON & NOYES
NANCY'S WELDING
NEWMAN CONCRETE SERVICES
PER-SE TECHNOLOGIES
THE PINELAND LUMBER COMPANY
E. J. PRESCOTT, INC.
SKILLINGS-SHAW & ASSOCIATES
WESCO DISTRIBUTION, INC.
W. S. WILLIAMS CONSTRUCTION COMPANY
WOMEN UNLIMITED

JOY WATKINS
P O BOX 755
GARDINER, ME 04345