



University of Kentucky
UKnowledge

Pharmacology and Nutritional Sciences Faculty
Publications

Pharmacology and Nutritional Sciences

9-2019

Diabetes-Related Amylin Dyshomeostasis: A Contributing Factor to Cerebrovascular Pathology and Dementia

Han Ly
University of Kentucky

Florin Despa
University of Kentucky, f.despa@uky.edu

Follow this and additional works at: https://uknowledge.uky.edu/pharmacol_facpub

 Part of the [Medical Pharmacology Commons](#), and the [Neurology Commons](#)

[Right click to open a feedback form in a new tab to let us know how this document benefits you.](#)

Repository Citation

Ly, Han and Despa, Florin, "Diabetes-Related Amylin Dyshomeostasis: A Contributing Factor to Cerebrovascular Pathology and Dementia" (2019). *Pharmacology and Nutritional Sciences Faculty Publications*. 105.

https://uknowledge.uky.edu/pharmacol_facpub/105

This Review is brought to you for free and open access by the Pharmacology and Nutritional Sciences at UKnowledge. It has been accepted for inclusion in Pharmacology and Nutritional Sciences Faculty Publications by an authorized administrator of UKnowledge. For more information, please contact UKnowledge@lsv.uky.edu.

Diabetes-Related Amylin Dyshomeostasis: A Contributing Factor to Cerebrovascular Pathology and Dementia

Digital Object Identifier (DOI)

<https://doi.org/10.12997/jla.2019.8.2.144>

Notes/Citation Information

Published in *Journal of Lipid and Atherosclerosis*, v. 8, issue 2.

Copyright © 2019 The Korean Society of Lipid and Atherosclerosis

This is an Open Access article distributed under the terms of the Creative Commons Attribution Non-Commercial License (<https://creativecommons.org/licenses/by-nc/4.0/>) which permits unrestricted non-commercial use, distribution, and reproduction in any medium, provided the original work is properly cited.

Review



OPEN ACCESS

Received: Mar 18, 2019

Revised: May 21, 2019

Accepted: Jun 4, 2019

Correspondence to

Florin Despa

Departments of Pharmacology and Nutritional Sciences, and Neurology, University of Kentucky, Lexington, KY 40506, USA.
E-mail: f.despa@uky.edu

Copyright © 2019 The Korean Society of Lipid and Atherosclerosis.

This is an Open Access article distributed under the terms of the Creative Commons Attribution Non-Commercial License (<https://creativecommons.org/licenses/by-nc/4.0/>) which permits unrestricted non-commercial use, distribution, and reproduction in any medium, provided the original work is properly cited.

ORCID iDs

Han Ly

<https://orcid.org/0000-0001-9245-0161>

Florin Despa

<https://orcid.org/0000-0002-5879-6449>

Funding

None.

Conflict of Interest

The authors have no conflicts of interest to declare.

Author Contributions

Writing - original draft: Ly H. Writing - review & editing: Despa F.

Diabetes-related Amylin Dyshomeostasis: a Contributing Factor to Cerebrovascular Pathology and Dementia

Han Ly , Florin Despa

Departments of Pharmacology and Nutritional Sciences, and Neurology, University of Kentucky, Lexington, KY, USA

ABSTRACT

Type 2 diabetes (T2D) increases the risk for cerebrovascular disease (CVD) and dementia. The underlying molecular mechanisms remain elusive, which hampers the development of treatment or/and effective prevention strategies. Recent studies suggest that dyshomeostasis of amylin, a satiety hormone that forms pancreatic amyloid in patients with T2D, promotes accumulation of amylin in cerebral small blood vessels and interaction with Alzheimer's disease (AD) pathology. Overexpression of human amylin in rodents (rodent amylin does not form amyloid) leads to late-life onset T2D and neurologic deficits. In this Review, we discuss clinical evidence of amylin pathology in CVD and AD and identify critical characteristics of animal models that could help to better understand molecular mechanisms underlying the increased risk of CVD and AD in patients with prediabetes or T2D.

Keywords: Type 2 diabetes mellitus; Diabetes complications; Cerebrovascular disease; Dementia; Alzheimer's disease; Amyloid

INTRODUCTION

Cerebrovascular disease (CVD) and Alzheimer's disease (AD) are common causes of dementia.¹ The pathological characteristics of CVD include structural and functional changes in the vasculature that affect oxygen and nutrient delivery to the brain.² Several risk factors contribute to the development of CVD, including diabetes, obesity, hypertension and smoking.³ CVD and cognitive decline have been increasingly recognized as diabetic complications.^{4,5} Despite recent advances in the care of patients with Type 2 diabetes (T2D), the risk of CVD and dementia remains higher (up to 2-fold) in the population with T2D or prediabetes compared to metabolically normal individuals.^{6,7} The causative mechanisms underlying diabetes-associated cognitive dysfunction and dementia remain elusive. Clinical evidence indicates that overt hyperglycemia is linked to diabetes-associated cognitive decline⁸ and dementia risk in non-diabetic individuals.⁹ Multi-centered, randomized controlled studies have shown, however, that stringent control of glycemic parameters, i.e., glycated hemoglobin (hemoglobin A1c) and fasting plasma glucose levels, does not improve cognitive function,^{10,11} rather, it increased mortality in patients with dementia.¹¹ On the other hand, repeated hypoglycemic episodes are clearly linked to cognitive decline and increased

dementia risk.^{8,12} From these studies, we foresee a need to identify novel contributing factors to the risk of cognitive impairment in humans with T2D or prediabetes.

Amylin, also known as islet amyloid polypeptide (IAPP), is a hormone co-synthesized with insulin by pancreatic β -cells and participates in the central regulation of satiety.¹³ Individuals with prediabetic insulin resistance have hypersecretion of both insulin and amylin.¹³ Thus, hyperamylinemia coincides with hyperinsulinemia and prediabetic insulin resistance, always.

Recent studies show that amylin accumulates in the cerebral small vessels of patients with dementia and T2D.^{14,15} Amylin deposition and mixed amylin- β amyloid (A β) plaques were also detected in brains of T2D patients with pathological AD.^{15,16} These results^{14,16} suggest a pathological role of amylin dyshomeostasis in the development and progression of CVD and dementia. Here, we review clinical evidence of amylin pathology in CVD and dementia, discuss currently available animal models for diabetes and dementia, identify existent challenges and suggest future work that could lead to uncovering novel molecular mechanisms underlying the impact of diabetes on brain function.

PERIPHERALLY-MEDIATED AMYLIN DYSHOMEOSTASIS PROVOKES CEREBRAL SMALL VESSEL DISEASE

Amylin is synthesized and co-secreted with insulin by the pancreatic β -cell.¹³ The amylin peptide crosses normally the blood-brain barrier (BBB)¹⁷ and binds to neurons in the cerebral feeding centers to regulate satiety.^{18,19}

Amylin from several mammalian species, including humans, cats, dogs, and monkeys (but not rodents), forms amyloid when overexpressed.¹³ Most of the patients with T2D (>90%) have amylin amyloid deposition in the pancreatic islets.^{13,20-23} Aggregated amylin induces β -cell dysfunction and apoptosis, contributing to the gradual loss of β -cell mass.²³ Recent studies report that patients with T2D have abnormal accumulation of aggregated amylin in extra-pancreatic tissues, including the kidneys²⁴ and the heart.²⁵ Accumulating evidence indicates that the presence of amylin deposition in brains of patients with T2D and dementia.^{14,15,26-29} Amylin accumulation is particularly abundant in the cerebral small vessels.^{14,15} We showed that microvascular amylin accumulation is associated with infarction and perivascular astrocyte recruitment, indicative of microvascular injury.¹⁴ Schultz et al.²⁷ showed that amylin forms intracellular inclusions in the brain microvascular pericytes of AD patients with T2D. Amylin-containing pericytes showed fragmented nuclei and loss of neuron-glial antigen 2 expression, which is necessary for pericyte viability and function.²⁷ Additionally, amylin appears to modulate pericyte autophagy and induces higher toxicity compared to A β amyloid *in vitro*.²⁷ Results from the same research team showed the presence of aggregated amylin in the retinal microvessels.²⁹ Capillary amylin accumulation in the retina appears to correlate with hippocampal amylin angiopathy and amylin burden.²⁹ These results^{14,15,27-29} suggest the possibility of using peripherally-mediated amylin dyshomeostasis as a biomarker of cerebrovascular risk in patients with T2D.

AMYLIN DYSHOMEOSTASIS AS A CONTRIBUTING FACTOR TO NEURODEGENERATION

One potential mechanism underlying vascular contributions to cognitive impairment and dementia (VCID) involves the interaction of diabetes-related amylin dyshomeostasis with AD pathology (**Fig. 1**). A study by Westermark et al.¹³ shows that the level of amylin is increased in the diffuse and dense cerebral plaques and within vascular amyloid deposits in brains of patients with pathological AD, without the clinical diagnosis of T2D.¹⁶ The results are consistent with previous data showing that *ex vivo* cross-seeding by amylin aggregates exponentially promote mixed amylin-A β amyloid formation.¹⁶ In line with these findings, a recent study demonstrates that mice expressing a mutated form of the amyloid precursor protein (APP) in neurons and human amylin in the pancreatic islets develop mixed amylin-A β plaques in the brain,³⁰ similar to the pathology observed in individuals with T2D and AD.^{15,16} When compared to transgenic mice expressing only the human amylin or the mutated form of APP protein alone, mice with mixed amylin-A β pathology show accelerated

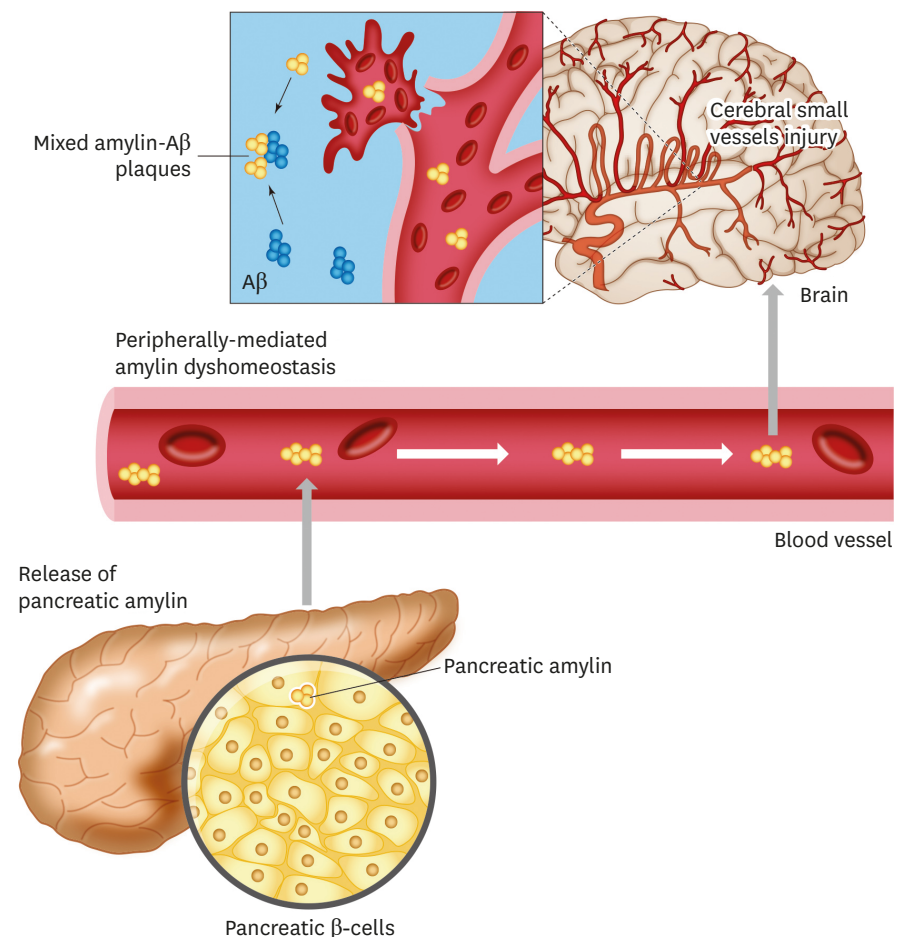


Fig. 1. Diabetes-related amylin dyshomeostasis leads to the formation of pancreatic amyloid and promotes amylin accumulation in the peripheral circulation. Circulating oligomerized amylin deposits in the brain microvasculature and induces small vessels injury by deranging the microvascular endothelium. Oligomerized amylin also forms mixed amylin-A β plaques in the brain parenchyma, accentuating neurotoxicity. Diabetes-related amylin dyshomeostasis promotes a feed-forward pathological process by which circulating oligomerized amylin injures brain microvasculature and synergizes with A β pathology to induce dementia. A β , β amyloid.

neurological dysfunction.³⁰ The mechanism for exacerbated neurological function in this mice model is postulated due to the increased A β burden in association with elevated amylin accumulation in the brain.³⁰ In contrast, the clinical data shows that A β burden is not increased in patients with T2D and AD.^{31,32} Thus, further investigations will be necessary to clarify the specific mechanism(s) underlying the effects of amylin dyshomeostasis on the brain in humans.

The increased propensity of amylin and A β to interact may be due to the fact that the amino acid sequence of human amylin is 52% similar to that of A β ₁₋₄₀ and A β ₁₋₄₂. The studies mentioned in above demonstrate the A β -seeding ability of human amylin in the brain. Nonetheless, one cannot exclude that the A β -seeding for amylin deposition is also a possible process that may occur parallel or independent from amylin-seeding A β .

In addition to protein-protein interaction, intriguingly, amylin and A β interaction are also found at the genetic level. Genome-wide association analysis further supports the interaction between the amylin gene and AD pathophysiology.³³ Specifically, near genome-wide significant interaction effect was observed for an imputed variant rs73069071, located on chromosome 12p 12.1, within the amylin gene.³³ The rs73069071-by-A β deposition was found for interaction effect on global cognitive function in AD patients.³³ Although remaining elusive, the postulated mechanism involves the effect of this single nucleotide polymorphism on amylin production, whose product is known to interact with A β or possibly altering A β metabolism, hence modulating the impact of A β -deposition on cognitive performance.

Within the effort to understand the interaction of amylin and A β pathology, results from several studies suggest that the interaction is mediated through amylin receptors.^{34,35} Experimental data suggest that A β directly activates amylin receptors, and that the oligomerized A β -induced neurotoxicity can be blocked with specific amylin receptor antagonists or downregulation of amylin receptor expression.^{34,35} Interestingly, amylin receptor expression in the brain was up-regulated within the area of increased amyloid burden in AD transgenic mice which overexpress the mutated form of APP.³⁵ Thus, while amylin accumulation appears to have deleterious effects, overexpression of amylin receptor (by the unknown mechanisms) possibly provides a platform for A β -induced neurotoxicity.

Besides pathological interaction of amylin with A β , aggregated amylin itself is neurotoxic. Several mechanisms of amylin-induced neuronal toxicity, including calcium dysregulation, oxidative stress, and mitochondrial dysfunction have been proposed.^{28,34,36} In neurons, amylin forms adduct with 4-hydroxynonenal, a marker of peroxidative membrane injury, leading to increased synthesis of the pro-inflammatory cytokine interleukin 1 β .²⁸ The amylin-mediated neuronal injuries were blocked *ex vivo* by membrane stabilizers and lipid peroxidation inhibitors.²⁸ Thus, aggregated amylin deranges the lipid membrane and predisposes it to peroxidative injury and inflammatory responses.

Given the pathological function of aggregated amylin,^{14,15,37} the interaction of amylin with A β may accentuate neurotoxicity. Therefore, prevention strategies to effectively block amylin-mediated neurodegeneration should involve the inhibition of amylin-induced neuronal membrane injury and amylin-A β interaction.

ANIMAL MODELS FOR CONTRIBUTIONS OF T2D TO COGNITIVE IMPAIRMENT AND DEMENTIA

Rodents are the most commonly used laboratory models for diabetes and dementia owing to their 99% similarity to the human genome.³⁸ However, neither diabetes nor dementia-like pathology spontaneously occurs in rodents. Conditions associated with diabetes, dementia, or both can be induced in rodents.^{14,37,39-41} For the most part, insights from these interventions have been restricted to cerebral effects of inducing diabetes in normal rodents and in rodents genetically modified to develop neurodegeneration linked to the accumulation of A β in the brain.

In humans with T2D, the variation in the clinical phenotype of cognitive dysfunction or dementia may result from multiple pathologies.^{31,42} An existent challenge of using rodent models to uncover mechanisms underlying the impact of T2D on brain structure and function lies on the fact that some genetic modifications that lead to T2D phenotype directly impact brain structure and function. For example, leptin or leptin-receptor deficiency, which is the commonly used genetic modification to induce obesity-related metabolic disturbances in rodents,⁴³ has negative effects on learning and memory.⁴⁴ Thus, interpretations made on specific molecular mechanisms of diabetes-induced brain dysfunction need careful consideration.

Overexpression (3-fold) of human amylin in rats leads to the mid-life onset of hyperglycemia linked to pancreatic amylin amyloid and β -cell apoptosis.⁴⁵ Diabetes in human amylin expressing rats (HIP rats) is associated with neurological deficits including declined learning and memory, vestibulomotor dysfunction, altered balance and gait abnormalities.^{14,37} In brains of the HIP rats with motor abnormalities, amylin deposition in small blood vessels correlates with microhemorrhages, decreased tight junction proteins levels and perivascular astrocyte activation,¹⁴ indicating that systemic amylin dyshomeostasis damages the BBB. Magnetic resonance imaging of HIP rat brains shows increased ventricular volumes with white matter hyperintensities and brain atrophy.¹⁴ Further assessment of cerebral blood flow in HIP rats via intravenous infusion of fluorescent microspheres and the measurement of the level of fluorescent microspheres retrieved from the brain capillaries reveal that amylin dyshomeostasis is associated with capillary loss and decreased cerebral perfusion.¹⁴ Amylin dyshomeostasis occludes or/and damages the brain small vessels, leading to brain parenchymal loss. Therefore, the animal model with amylin dyshomeostasis has the advantage to recapitulate major lesions, vascular lesion and brain atrophy, seen in brains of individuals with T2D (; for a review³¹).

CURRENT CHALLENGES AND FUTURE DIRECTIONS FOR LABORATORY STUDIES

Investigations of human brain tissues and rodent models for T2D suggest that amylin dyshomeostasis could play a potential role in the development of CVD and AD in individuals with T2D. Because amylin is produced in the pancreas and accumulates in the brain in association with CVD and AD, it is of clinical interest to decipher the central aspects of amylin dyshomeostasis in diabetes-related CVD and dementia. First, cerebrovascular accumulation of amylin may require carrier(s) in the circulation. The possible carrier could be macro-/micro-molecules or cellular components in the circulation. The animal model for amylin dyshomeostasis discussed above serves as a useful tool for extensive *in vivo* characterization of pharmacological interventions. Second, the translocation of amylin

from the blood vessels to the parenchyma may require protein transporter(s). Likely, such translocation is concentration-dependent, because high aggregated amylin concentration is found to directly induce endothelial apoptosis in our previous study.¹⁴ Following the assessment of the cerebrovascular injury in the animal model of amylin dyshomeostasis, *in vitro* studies designed to identify specific protein transporter(s) are an important step to decipher how amylin interacts with BBB units and its translocation mechanism(s). Third, the specific function of amylin and aggregated amylin in vascular, neuronal and glial cells have not been fully understood. From our previous studies, we found that aggregated amylin could directly participate in cerebrovascular injury¹⁴ and neurodegeneration.²⁸ However, much less is known about the effects of aggregated amylin on vascular, neuronal and glial function. Finally, we propose that understanding the pathways for aggregated amylin clearance from the circulation and the brain vasculature could be beneficial for therapeutic development.

Indeed, future research should take into consideration that the pathophysiology of T2D involves a complex interaction of multiple deficiencies. Therefore, the multi-facets of the T2D requires research models that can represent the complexity of the disease, in order to understand the underlying mechanisms attributed to CVD or dementia.

CONCLUSION

Diabetes-related amylin dyshomeostasis has a pathological role in CVD and dementia. Existent evidence has suggested that the accumulation of aggregated amylin in the brain blood vessels and brain parenchyma, mediated by peripheral amylin dyshomeostasis, is a potential mechanism underlying VCID.

REFERENCES

1. Alzheimer's Association. 2019 Alzheimer's disease facts and figures. *Alzheimers Dement* 2019;15:321-387.
[PUBMED](#) | [CROSSREF](#)
2. Iadecola C. The pathobiology of vascular dementia. *Neuron* 2013;80:844-866.
[PUBMED](#) | [CROSSREF](#)
3. Tong X, Yang Q, Ritchey MD, George MG, Jackson SL, Gillespie C, et al. The burden of cerebrovascular disease in the United States. *Prev Chronic Dis* 2019;16:E52.
[PUBMED](#) | [CROSSREF](#)
4. Rawlings AM, Sharrett AR, Schneider AL, Coresh J, Albert M, Couper D, et al. Diabetes in midlife and cognitive change over 20 years: a cohort study. *Ann Intern Med* 2014;161:785-793.
[PUBMED](#) | [CROSSREF](#)
5. Okereke OI, Kang JH, Cook NR, Gaziano JM, Manson JE, Buring JE, et al. Type 2 diabetes mellitus and cognitive decline in two large cohorts of community-dwelling older adults. *J Am Geriatr Soc* 2008;56:1028-1036.
[PUBMED](#) | [CROSSREF](#)
6. Ott A, Stolk RP, van Harskamp F, Pols HA, Hofman A, Breteler MM. Diabetes mellitus and the risk of dementia: The Rotterdam Study. *Neurology* 1999;53:1937-1942.
[PUBMED](#) | [CROSSREF](#)
7. Peila R, Rodriguez BL, Launer LJ; Honolulu-Asia Aging Study. Type 2 diabetes, APOE gene, and the risk for dementia and related pathologies: The Honolulu-Asia Aging Study. *Diabetes* 2002;51:1256-1262.
[PUBMED](#) | [CROSSREF](#)
8. Geijselaers SL, Sep SJ, Stehouwer CD, Biessels GJ. Glucose regulation, cognition, and brain MRI in type 2 diabetes: a systematic review. *Lancet Diabetes Endocrinol* 2015;3:75-89.
[PUBMED](#) | [CROSSREF](#)

9. Crane PK, Walker R, Larson EB. Glucose levels and risk of dementia. *N Engl J Med* 2013;369:1863-1864.
[PUBMED](#) | [CROSSREF](#)
10. Cukierman-Yaffe T, Gerstein HC, Williamson JD, Lazar RM, Lovato L, Miller ME, et al. Relationship between baseline glycemic control and cognitive function in individuals with type 2 diabetes and other cardiovascular risk factors: the action to control cardiovascular risk in diabetes-memory in diabetes (ACCORD-MIND) trial. *Diabetes Care* 2009;32:221-226.
[PUBMED](#) | [CROSSREF](#)
11. Launer LJ, Miller ME, Williamson JD, Lazar RM, Gerstein HC, Murray AM, et al. Effects of intensive glucose lowering on brain structure and function in people with type 2 diabetes (ACCORD MIND): a randomised open-label substudy. *Lancet Neurol* 2011;10:969-977.
[PUBMED](#) | [CROSSREF](#)
12. Feinkohl I, Price JF, Strachan MW, Frier BM. The impact of diabetes on cognitive decline: potential vascular, metabolic, and psychosocial risk factors. *Alzheimers Res Ther* 2015;7:46.
[PUBMED](#) | [CROSSREF](#)
13. Westermark P, Andersson A, Westermark GT. Islet amyloid polypeptide, islet amyloid, and diabetes mellitus. *Physiol Rev* 2011;91:795-826.
[PUBMED](#) | [CROSSREF](#)
14. Ly H, Verma N, Wu F, Liu M, Saatman KE, Nelson PT, et al. Brain microvascular injury and white matter disease provoked by diabetes-associated hyperamylinemia. *Ann Neurol* 2017;82:208-222.
[PUBMED](#) | [CROSSREF](#)
15. Jackson K, Barisone GA, Diaz E, Jin LW, DeCarli C, Despa F. Amylin deposition in the brain: a second amyloid in Alzheimer disease? *Ann Neurol* 2013;74:517-526.
[PUBMED](#) | [CROSSREF](#)
16. Oskarsson ME, Paulsson JF, Schultz SW, Ingelsson M, Westermark P, Westermark GT. *In vivo* seeding and cross-seeding of localized amyloidosis: a molecular link between type 2 diabetes and Alzheimer disease. *Am J Pathol* 2015;185:834-846.
[PUBMED](#) | [CROSSREF](#)
17. Banks WA, Kastin AJ, Maness LM, Huang W, Jasan JB. Permeability of the blood-brain barrier to amylin. *Life Sci* 1995;57:1993-2001.
[PUBMED](#) | [CROSSREF](#)
18. Beaumont K, Kenney MA, Young AA, Rink TJ. High affinity amylin binding sites in rat brain. *Mol Pharmacol* 1993;44:493-497.
[PUBMED](#)
19. Woods SC, Lutz TA, Geary N, Langhans W. Pancreatic signals controlling food intake; insulin, glucagon and amylin. *Philos Trans R Soc Lond B Biol Sci* 2006;361:1219-1235.
[PUBMED](#) | [CROSSREF](#)
20. Westermark P. Quantitative studies on amyloid in the islets of Langerhans. *Ups J Med Sci* 1972;77:91-94.
[PUBMED](#) | [CROSSREF](#)
21. Johnson KH, O'Brien TD, Betsholtz C, Westermark P. Islet amyloid, islet-amyloid polypeptide, and diabetes mellitus. *N Engl J Med* 1989;321:513-518.
[PUBMED](#) | [CROSSREF](#)
22. Clark A, Wells CA, Buley ID, Cruickshank JK, Vanhegan RI, Matthews DR, et al. Islet amyloid, increased A-cells, reduced B-cells and exocrine fibrosis: quantitative changes in the pancreas in type 2 diabetes. *Diabetes Res* 1988;9:151-159.
[PUBMED](#)
23. Jurgens CA, Toukatly MN, Fligner CL, Udayasankar J, Subramanian SL, Zraika S, et al. β -cell loss and β -cell apoptosis in human type 2 diabetes are related to islet amyloid deposition. *Am J Pathol* 2011;178:2632-2640.
[PUBMED](#) | [CROSSREF](#)
24. Gong W, Liu ZH, Zeng CH, Peng A, Chen HP, Zhou H, et al. Amylin deposition in the kidney of patients with diabetic nephropathy. *Kidney Int* 2007;72:213-218.
[PUBMED](#) | [CROSSREF](#)
25. Despa S, Margulies KB, Chen L, Knowlton AA, Havel PJ, Taegtmeier H, et al. Hyperamylinemia contributes to cardiac dysfunction in obesity and diabetes: a study in humans and rats. *Circ Res* 2012;110:598-608.
[PUBMED](#) | [CROSSREF](#)
26. Fawver JN, Ghiwot Y, Koola C, Carrera W, Rodriguez-Rivera J, Hernandez C, et al. Islet amyloid polypeptide (IAPP): a second amyloid in Alzheimer's disease. *Curr Alzheimer Res* 2014;11:928-940.
[PUBMED](#) | [CROSSREF](#)

27. Schultz N, Byman E, Fex M, Wennström M. Amylin alters human brain pericyte viability and NG2 expression. *J Cereb Blood Flow Metab* 2017;37:1470-1482.
[PUBMED](#) | [CROSSREF](#)
28. Verma N, Ly H, Liu M, Chen J, Zhu H, Chow M, et al. Intraneuronal amylin deposition, peroxidative membrane injury and increased IL-1 β synthesis in brains of Alzheimer's disease patients with type-2 diabetes and in diabetic HIP rats. *J Alzheimers Dis* 2016;53:259-272.
[PUBMED](#) | [CROSSREF](#)
29. Schultz N, Byman E, Wennström M, Netherlands Brain Bank Wennström M. Levels of retinal IAPP are altered in Alzheimer's disease patients and correlate with vascular changes and hippocampal IAPP levels. *Neurobiol Aging* 2018;69:94-101.
[PUBMED](#) | [CROSSREF](#)
30. Moreno-Gonzalez I, Edwards G III, Salvadores N, Shahnawaz M, Diaz-Espinoza R, Soto C. Molecular interaction between type 2 diabetes and Alzheimer's disease through cross-seeding of protein misfolding. *Mol Psychiatry* 2017;22:1327-1334.
[PUBMED](#) | [CROSSREF](#)
31. Biessels GJ, Despa F. Cognitive decline and dementia in diabetes mellitus: mechanisms and clinical implications. *Nat Rev Endocrinol* 2018;14:591-604.
[PUBMED](#) | [CROSSREF](#)
32. Biessels GJ, Strachan MW, Visseren FL, Kappelle LJ, Whitmer RA. Dementia and cognitive decline in type 2 diabetes and prediabetic stages: towards targeted interventions. *Lancet Diabetes Endocrinol* 2014;2:246-255.
[PUBMED](#) | [CROSSREF](#)
33. Roostaei T, Nazeri A, Felsky D, De Jager PL, Schneider JA, Pollock BG, et al. Genome-wide interaction study of brain beta-amyloid burden and cognitive impairment in Alzheimer's disease. *Mol Psychiatry* 2017;22:287-295.
[PUBMED](#) | [CROSSREF](#)
34. Jhamandas JH, MacTavish D. Antagonist of the amylin receptor blocks β -amyloid toxicity in rat cholinergic basal forebrain neurons. *J Neurosci* 2004;24:5579-5584.
[PUBMED](#) | [CROSSREF](#)
35. Jhamandas JH, Li Z, Westaway D, Yang J, Jassar S, MacTavish D. Actions of β -amyloid protein on human neurons are expressed through the amylin receptor. *Am J Pathol* 2011;178:140-149.
[PUBMED](#) | [CROSSREF](#)
36. Lim YA, Rhein V, Baysang G, Meier F, Poljak A, Raftery MJ, et al. A β and human amylin share a common toxicity pathway via mitochondrial dysfunction. *Proteomics* 2010;10:1621-1633.
[PUBMED](#) | [CROSSREF](#)
37. Srodulski S, Sharma S, Bachstetter AB, Brelsfoard JM, Pascual C, Xie XS, et al. Neuroinflammation and neurologic deficits in diabetes linked to brain accumulation of amylin. *Mol Neurodegener* 2014;9:30.
[PUBMED](#) | [CROSSREF](#)
38. Guénet JL. The mouse genome. *Genome Res* 2005;15:1729-1740.
[PUBMED](#) | [CROSSREF](#)
39. King AJ. The use of animal models in diabetes research. *Br J Pharmacol* 2012;166:877-894.
[PUBMED](#) | [CROSSREF](#)
40. Neha , Sodhi RK, Jaggi AS, Singh N. Animal models of dementia and cognitive dysfunction. *Life Sci* 2014;109:73-86.
[CROSSREF](#)
41. Biessels GJ, Gispen WH. The impact of diabetes on cognition: what can be learned from rodent models? *Neurobiol Aging* 2005;26 Suppl 1:36-41.
[PUBMED](#) | [CROSSREF](#)
42. Biessels GJ, Staekenborg S, Brunner E, Brayne C, Scheltens P. Risk of dementia in diabetes mellitus: a systematic review. *Lancet Neurol* 2006;5:64-74.
[PUBMED](#) | [CROSSREF](#)
43. Wang B, Chandrasekera PC, Pippin JJ. Leptin- and leptin receptor-deficient rodent models: relevance for human type 2 diabetes. *Curr Diabetes Rev* 2014;10:131-145.
[PUBMED](#) | [CROSSREF](#)
44. Farr SA, Banks WA, Morley JE. Effects of leptin on memory processing. *Peptides* 2006;27:1420-1425.
[PUBMED](#) | [CROSSREF](#)
45. Matveyenko AV, Butler PC. Islet amyloid polypeptide (IAPP) transgenic rodents as models for type 2 diabetes. *ILAR J* 2006;47:225-233.
[PUBMED](#) | [CROSSREF](#)