

Analysis of Traffic Crash Data in Kentucky 2015-2019



Kentucky Transportation Center
Research Report
KTC-20-32/KSP2-20-1F

DOI:<https://doi.org/10.13023/ktc.rr.2020.32>



Excellence in Motion
<http://ktc.uky.edu>

Do you need access to data
or advice from a traffic safety expert?



KTSDS

Kentucky Traffic Safety Data Services

If you'd like to ask for help with your project, check out the
Kentucky Traffic Data Services.

KTSDS.ktc.uky.edu

KTC's Mission

We provide services to the transportation community through research, technology transfer, and education. We create and participate in partnerships to promote safe and effective transportation systems.

The contents of this report reflect the views of the authors, who are responsible for the facts and accuracy of the data presented herein.

The contents do not necessarily reflect the official views or policies of the University of Kentucky or the Kentucky Transportation Cabinet. This report does not constitute a standard, specification, or regulation.

Photos and other images created by the Kentucky Transportation Center or licensed with credits under a standard perpetual license agreement through iStock.com in partnership with Getty Images(US), Inc.

Analysis of Traffic Crash Data in Kentucky 2015-2019

Prepared by:

Kentucky Transportation Center
College of Engineering
University of Kentucky
Lexington, Kentucky 40506-0281
www.ktc.uky.edu

Authored by:

Eric R. Green, PhD.
Program Manager

Paul A. Ross
Research Scientist

Christopher L. Blackden, PhD.
Research Scientist

Michael A. Fields
Research Analyst

William Staats
Engineer Associate

In cooperation with:

Kentucky State Police

The Commonwealth of Kentucky

The Kentucky Transportation Cabinet
Division of Planning

Please direct inquiries to:

Criminal Identification and Records Branch
Kentucky State Police
1266 Louisville Road
Frankfort, Kentucky 40601

(502) 227-8700



Table of Contents

A Note from the Editor	vi
Introduction	vii
Procedure.....	viii

Safety Performance Functions

Rural Two-Lane SPF	3
Urban Two-Lane SPF	5
Rural Multilane (Undivided) SPF.....	7
Urban Multilane (Divided) SPF	8
Urban Multilane (Undivided) SPF.....	9
Rural Interstate and Parkway SPF	10
Urban Interstate and Parkway SPF and Adjustment Factors	11
Intersection SPFs	12

Tables

Statewide Five-Year Comparison.....	14
Statewide Rural and Urban Crash Rates.....	15
Comparison of Crash Rate to Previous 4 Years.....	16
Crash Rates by County	17
County Population	20
Crash Rates by County and Population Category on All Public Roads.....	21
Crash Rates by County and Population Category on Public Roads with Known Volume.....	24
Injury or Fatal Crash Rates by County and Population.....	27
Fatal Crash Rates by County and Population	30
Public Roads Crash Data for Each County.....	33

Crashes Involving Alcohol by County and Population Category	36
Summary of Alcohol Convictions by County (as collected by police)	39
Alcohol Conviction Rates by County and Population.....	42
DUI Conviction Rates by County and Population.....	45
Summary of Reckless Driving Convictions by County	48
Percent of Crashes Involving Drugs by County for All Roads.....	51
Percent of Crashes involving unsafe Speed by County for All Roads	54
Summary of Speeding Convictions by County	57
Speeding Conviction Rates.....	60
Crash Trend Analysis	63
Crashes Involving Vehicle Defects.....	64
Statewide Crash Rates by Functional Class	65
Percent of All Crashes	66

Figures

Trends in Crash Rates for Identified Roads	68
Trends in Rural Crash Rates for Identified Roads.....	69
Trends in Urban Crash Rates for Identified Roads.....	70

A Note from the Editor

Table numbers have changed!

The 2015-2019 Analysis of Traffic Crash Data in Kentucky has seen substantial changes over previous versions. These changes may make comparison to previous years difficult or in some cases impossible. If there is something missing from this year's publication you need for your job, we'd still be happy to assist you. To do that, you may submit a data request to the Kentucky Traffic Safety Data Service (KTSDS) by going to <http://ktsds.ktc.uky.edu>

There are several reasons for changes to this publication and we'd like to explain our reasoning.

Since September 27, 2016 we have hosted a survey (<http://bit.ly/2cjZVS0>) about how people use this publication. Our goal was to identify what information would be most useful in shaping this publication. Many of you responded, and those responses have helped us to guide changes.

Additionally, collision safety analysis methods have evolved over time. Historically the focus of analysis has been centered around crash rates based on traffic volumes. More modern methods of analysis to predict crash rates and develop modification factors utilize safety performance functions (SPFs) which can improve performance due to their ability to handle more data characteristics including non-linear models and interaction effects between characteristics. We now include SPFs as a part of this publication.

Lastly our own methods for counting, analyzing, and producing tables have been substantially updated this year. We have moved from a much older FORTRAN based process to a modern SQL Server process. This change had to happen as KTC lost a long-time team member who did a lot of our critical back-end work. It is with great sadness that we remember the important contributions spanning four decades which our colleague and friend Neil Tollner made to the safety of Kentucky through the effort he put into this and many other KTC projects.



In memory of Neil W. Tollner

1951-2020

Executive Summary and Introduction

This report documents an analysis of traffic crash data in Kentucky. A primary objective of this study was to determine average crash statistics for Kentucky highways. Where used, rates were calculated for various types of highways and for counties and cities. Difference criteria were used for exposure.

Average and critical numbers, SPFs, and rates of crashes were calculated for various types of highways in rural and urban areas. These use crashes identified on highways where Annual Average Daily Traffic (AADT) volumes were available. The data in this report may be used to help identify problem areas.

The other primary objective of this study was to provide data that can be used in the preparation of the problem identification portion of Kentucky's Annual Highway Safety Plan (HSP). Crash statistics were analyzed and a summary of results and recommendations in several problem identification areas is presented. These general areas include; alcohol involvement, occupant protection, speed, teenage drivers, pedestrians, bicycles, motorcycles, trucks, and vehicle defects. Other areas included in the analysis for which specific recommendations were not made include, school bus crashes and train crashes.

The crash data are stored in the Collision Report Analysis for Safer Highways (CRASH) database. This database is updated daily so the number of crashes in a given calendar year will continue to change for a substantial time after the end of that year. KTC captures an extract annually for analysis.

Annual reports have previously been prepared since 1978 dealing with the calculation of statewide traffic crash rates for Kentucky and preparation of the problem identification portion of Kentucky's Annual Highway Safety Plan. Traffic crash data for a five-year period were used in the preparation of this report.

Kentucky has a systematic procedure to identify locations that have had abnormal rates or numbers of traffic crashes. However, before that procedure may be utilized, average crash rates and numbers must be determined for appropriate highway categories and for rural and urban areas. A primary objective of this study was to determine average traffic crash statistics for Kentucky. Those statistics may then be used in the high-crash location identification program to identify locations that should be investigated to determine whether changes should be made.

A highway safety program is prepared each year for Kentucky in order to comply with Section 402, Title 23 of the United States Code. This program includes the identification, programming, budgeting, and evaluation of safety projects with the objective of reducing the number and severity of traffic crashes. The second major objective of this report is to provide data that may be included as the problem identification portion of Kentucky's Annual Highway Safety Plan. Results from this report are used to provide benchmark data for that process.

Do you use this report? Want to give us feedback on it? Please fill out this survey: <http://bit.ly/2cjZVSO>

Procedure

Crash and traffic (traffic volume and roadway geometrics) databases were used to obtain traffic crash statistics. Traffic crash data have been maintained in a computer file containing all police-reported crashes. The crash report was changed in 2000 with the data now contained in the Collision Report Analysis for Safer Highways (CRASH) database. The computer files and data base were obtained from the Kentucky State Police (KSP). All police agencies in the state are required to send traffic crash reports to the KSP.

Parking lot crashes were not included in the computer file from 1994 through 1999. Parking lot crashes are now contained in the CRASH database but they were excluded from the analysis to maintain consistency with previous years. Crashes coded as occurring on private property were also excluded from the data for 2014-2018 so it would be consistent with other reports. All crashes included in the analysis occurred on a public highway. It should be noted that this database is updated daily so the number of crashes in a given calendar year will continue to change for a substantial time after the end of that year. This would result in numbers in the tables in this report being less than those contained in the current CRASH database. Summaries were prepared from an analysis of the crash data from the CRASH database for 2014-2018.

Volume data, along with other data describing highway characteristics such as number of lanes, is obtained from a computer file containing roadway characteristics data for all state-maintained highways and some local roads. In the past this information is obtained from the Highway Performance Monitoring System (HPMS) file. Now the Highway Information File (HIS) file is been used. Data for a five-year period of 2014-2018 were obtained from these files. The HPMS and HIS files were used to obtain the roadway information needed to compute crash rates as a function of various roadway characteristics such as number of lanes.

A computer program using both crash data from the crash database and roadway characteristics information from the HPMS and HIS files was used to calculate rates for the state-maintained system. A separate computer program was used to obtain additional summaries of various crash variables with this program using all reported traffic crashes (excluding parking lots and private property).

The matching process was significantly changed starting with 2012 data due to the change to the HIS format. Crashes are now matched to any road with traffic volume data. Previously crashes were matched to HPMS using the route number. With the improvements in crash location data, crashes are able to be matched by three different route identifiers (RT_Unique, the GIS route identifier and roadway number). The resulting matching rate is much higher than previous years, particularly for urban streets. This has resulted in an increase in crashes and resulting rates.

Rates were calculated for: 1) all roads having known traffic volumes, route numbers and 2) all public streets and highways on and off the state-maintained system. A large majority of roads with traffic volumes are state-maintained. However, this document will refer to these roads as 'identified roads' since some of these routes were locally maintained. Rates were provided in terms of crashes per 100 million vehicle-miles (C/100 MVM) where traffic volumes could be determined. Population was used as the measure of exposure in instances where traffic volume data were not available to use as the exposure measure. Population data from the 2010 census were used.

In addition to average rates, critical rates and numbers of crashes are required for the high-crash location program. Both types of rates were calculated. The following formula (Equation 1) was used to calculate critical crash rates.

$$C_c = C_a + K\sqrt{\frac{C_a}{M}} + \frac{1}{2M}$$

where:

$C_c =$	critical crash rate
$C_a =$	average crash rate
$K =$	constant related to level of statistical significance selected (a probability of 0.995 was used wherein $K = 2.576$)
$M =$	exposure (for sections, M was in terms of 100 million vehicle-miles (100 MVM); for spots, M was in terms of million vehicles)

To determine the critical number of crashes, the following formula (Equation 2) was used.

$$N_c = N_a + K\sqrt{N_a} + 0.5$$

where:

$N_c =$	critical number of crashes
$N_a =$	average number of crashes



Safety Performance Functions

Overall Summary

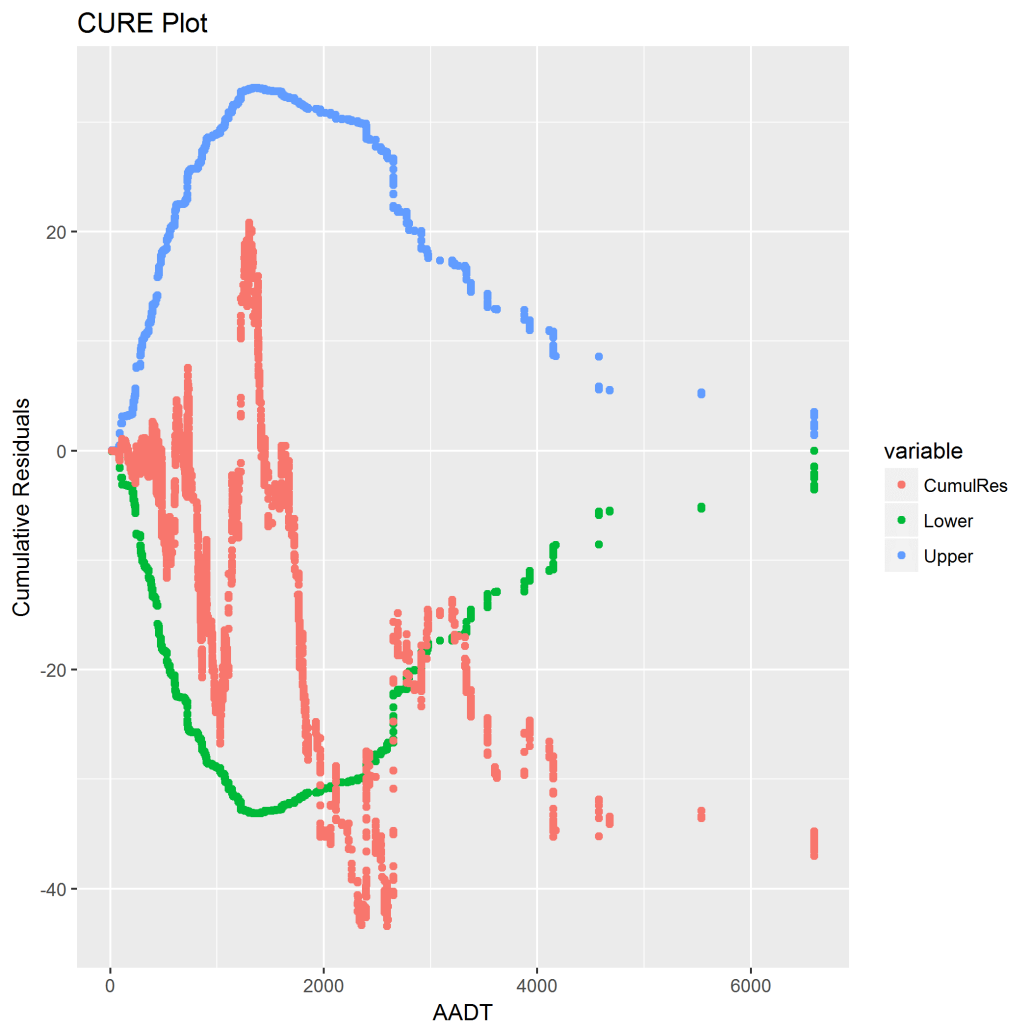
Roadway Type	Base Conditions
Rural 2 Lane	Lane Width = 9 ft Shoulder Width = 3 ft Horizontal Curve = Class A Grade = Class A
Non Rural 2 Lane	---
Rural Multilane (Divided)	Shoulder Width = 10 ft
Rural Multilane (Undivided)	Lane Width = 12 ft
Urban Multilane (Divided)	Median Width over 20
Urban Multilane (Undivided)	Lane Width = 12 ft
Rural Interstate and Parkways	---
Urban Interstate and Parkways	---

Disclaimer: The following SPFs were developed using five years of crash data. Therefore, the models predict crashes over a five-year period. If a user wishes to predict crashes on an annual basis, they must add a coefficient of 1/5 to the model to avoid over-predicting crashes by a factor of 5.

Rural Two-Lane SPF

Base Conditions

Lane Width	9 ft
Shoulder Width	3 ft
Horizontal Curve	Class A
Grade	Class A
Median	No
Intersection	No



$$SPF = L * e^{-4.492 * AADT^{0.844}}$$

Theta = 1.532

Rural Two-Lane Adjustment Factors

Lane width AF (Modified from HSM)			
Lane Width (ft)	AADT < 400	AADT 400-2,000	AADT > 2,000
9 or less (base)	1	1	1
10	0.97	1.02+.000175*(AADT-400)/ 1.05+.000281*(AADT-400) Or 0.622776+(1302.8/(AADT+3336.65))	0.87
11	0.96	1.01+.000025*(AADT-400)/ 1.05+.000281*(AADT-400) Or 0.088968+(3261.86/(AADT+3336.65))	0.7
12 or more	0.95	1/(1.05+.000281*(AADT-400)) Or 3558.72/(AADT+3336.65)	0.67

Shoulder width AF http://www.cmfclearinghouse.org/study_detail.cfm?stid=338		
Shoulder Width	AF	Crash Severity
0	1.145	All
1	1.12	All
2	1.03	All
3	1	All
4	0.975	All
5	0.945	All
6	0.93	All
7	0.905	All
8	0.875	All

Horizontal Curvature AF http://www.cmfclearinghouse.org/study_detail.cfm?stid=481	
$CMF = 196.4 * R^{-0.65}$	
Grade	AF
0-3%	1
3-6%	1.1
> 6%	1.16

Median Installation AF http://www.cmfclearinghouse.org/detail.cfm?facid=24
0.88

Urban Two-Lane SPF

Base Conditions

Intersection

No

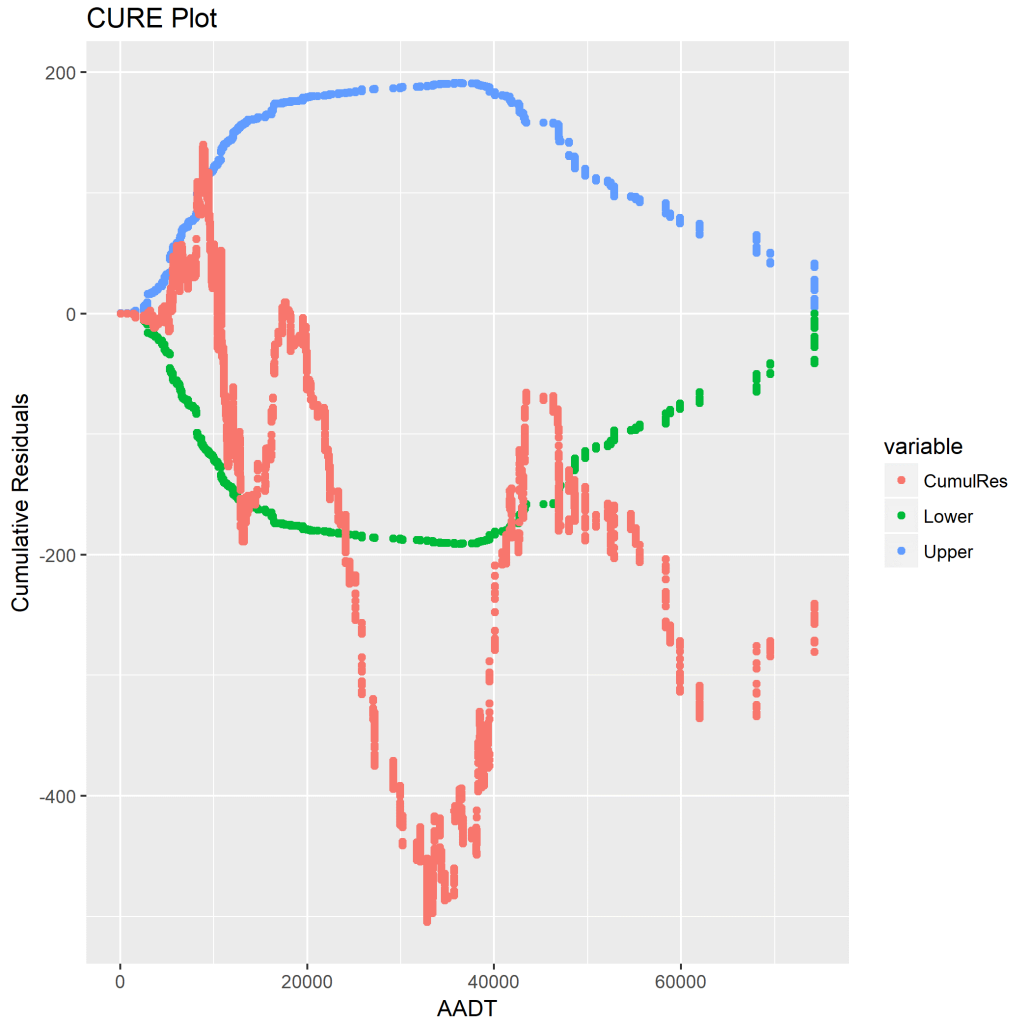


$$\text{SPF} = L * e^{-3.65 * \text{AADT}^{0.78}}$$

Theta = 1.126

Rural Multi-Lane (Divided) SPF and Adjustment Factors

Base Conditions	
Lane Width	> 0.1
Shoulder Width	10
Intersection	No



$$SPF = L * e^{-5.337 * AADT^{0.768}}$$

Theta = 1.951

Adjustment Factors

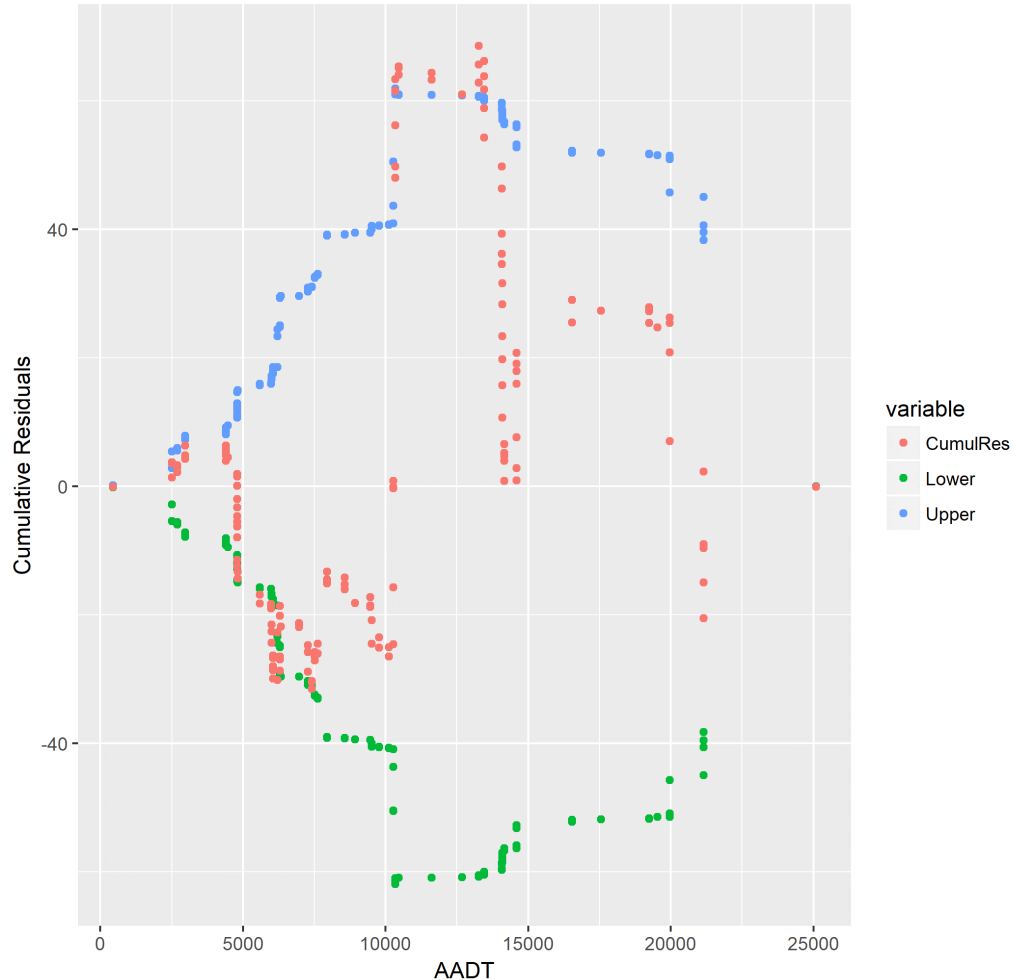
Shoulder Width (Right Shoulder) AF (HSM)	
Average Shoulder Width	AF
0	1.18
2	1.13
4	1.09
6	1.04
8 or more	1.00

Rural Multilane (Undivided) SPF and Adjustment Factors

Base Conditions

Length	Above 0.1
Lane Width	12
Intersection	No

CURE Plot



$$SPF = L * e^{-6.962} * AADT^{1.045}$$

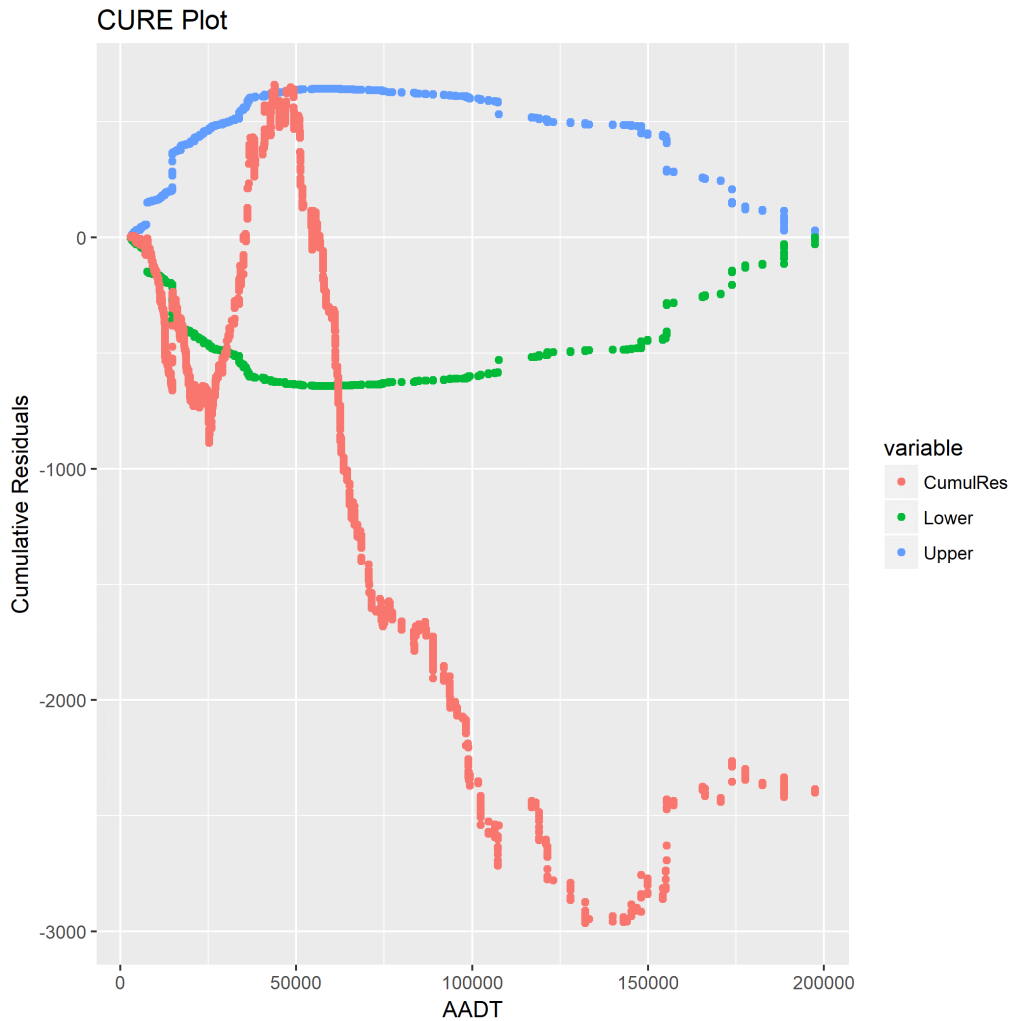
Theta = 0.649

Adjustment Factors

Lane Width AF (HSM)			
Lane Width (ft)	AADT < 400	AADT 400-2,000	AADT > 2,000
9 or less	1.04	1.04 + 2.13*10 ⁻⁴ (AADT-400)	1.38
10	1.02	1.02+1.31*10 ⁻⁴ (AADT-400)	1.23
11	1.01	1.01+1.88*10 ⁻⁵ (AADT-400)	1.04
12	1.00	1.00	1.00

Urban Multilane (Divided) SPF and Adjustment Factors

Base Conditions	
Length	Above 0.1
Media Width	Over 20
Intersection	No



$$SPF = L * e^{-4.171} * AADT^{0.761}$$

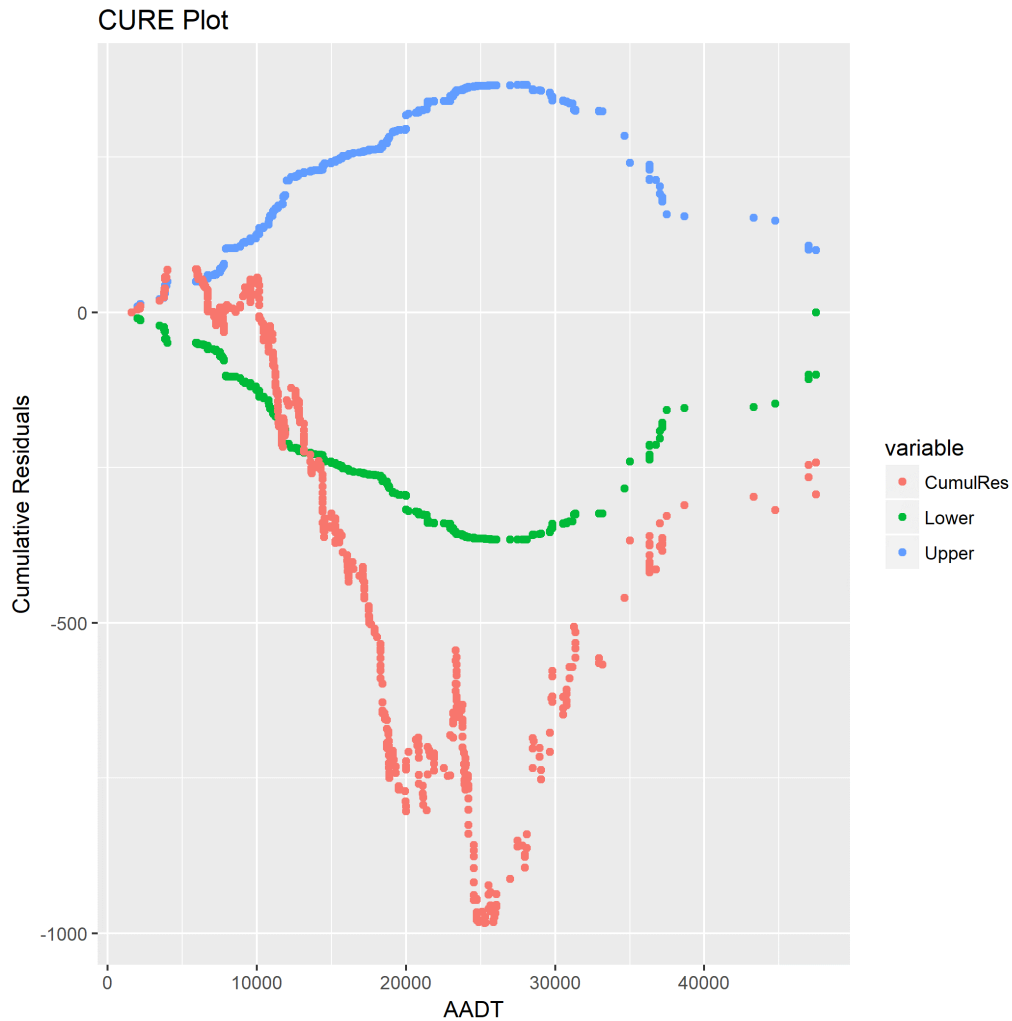
Theta = 0.814

Adjustment Factors

Median Width	
Median Width	AF
>= 20 ft	12
< 20 ft	No

Urban Multilane (Undivided) SPF and Adjustment Factors

Base Conditions	
Lane Width	12
Intersection	No



$$SPF = L * e^{-6.894 * AADT^{1.15}}$$

Theta = 0.882

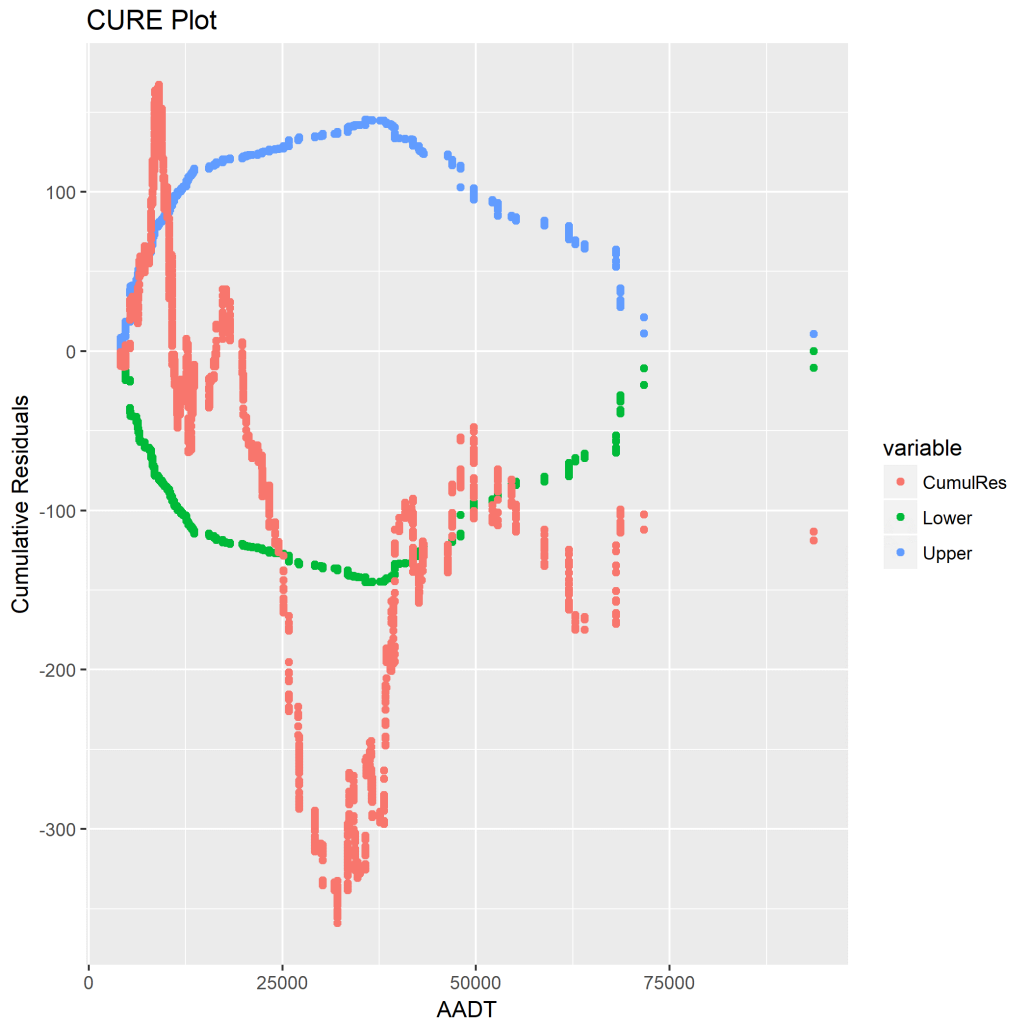
Adjustment Factors

Lane Width				
Lane Width (ft)	9 or less	10	11	12+
AF	1.12	1.07	1.01	1

Rural Interstate and Parkway SPF and Adjustment Factors

Base Conditions

Length	Above 0.1
Intersection	No



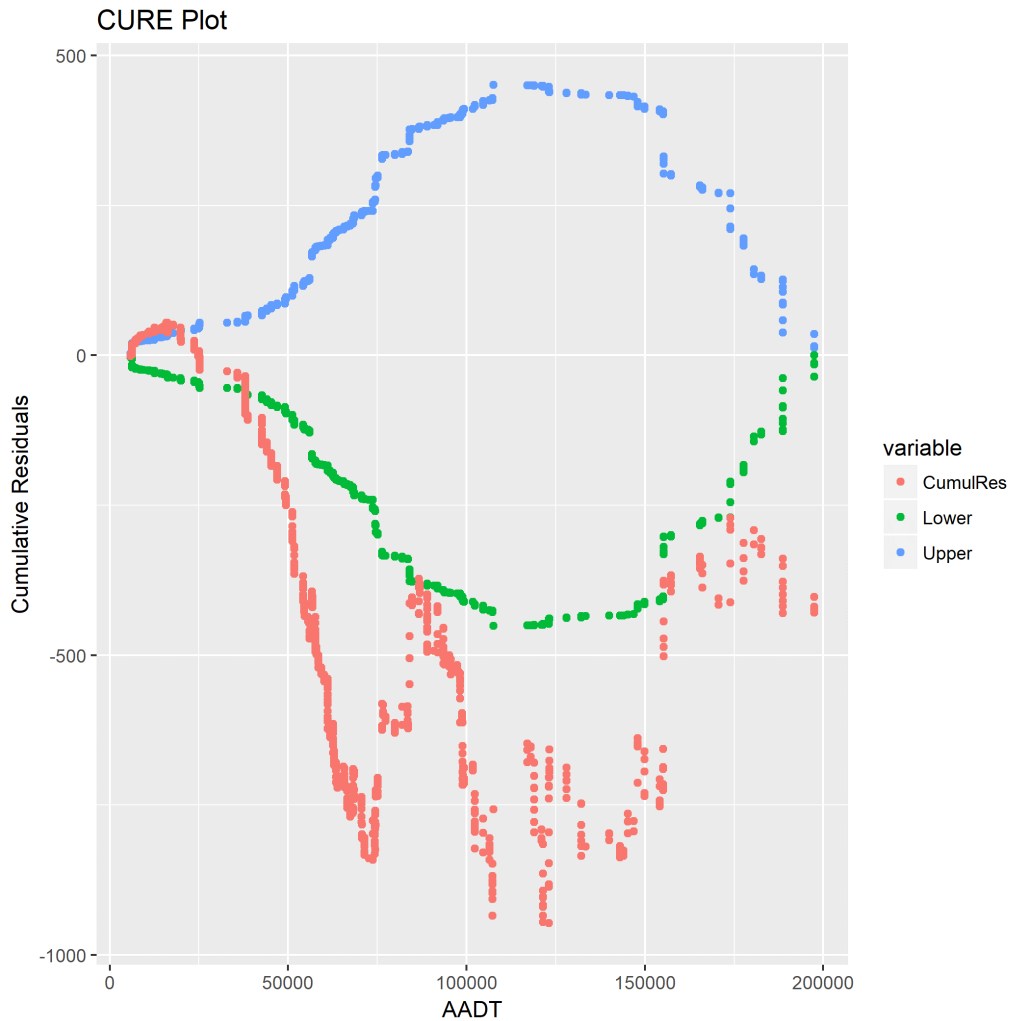
$$\text{SPF} = L * e^{-6.358 * \text{AADT}^{0.869}}$$

Theta = 2.448

Urban Interstate and Parkway SPF and Adjustment Factors

Base Conditions

Length	Above 0.1
Intersection	No



$$\text{SPF} = L * e^{-10.595 * \text{AADT}^{1.305}}$$

Theta = 1.642

Intersection SPFs

$$\text{Crashes} = \text{Intercept} * \text{AADT}_{\text{Major}}^{\text{Alpha1}} * \text{AADT}_{\text{Minor}}^{\text{Alpha 2}}$$

Intersection Type	Theta	Intercept	Alpha 1	Alpha 2
D3rN	0.890	-2.602	0.262	0.012
D3rP	0.916	-4.771	0.283	0.473
D3rS	1.437	-0.319	0.093	0.294
D3rx	0.911	-3.373	0.220	0.136
D3uN	0.779	-0.528	0.174	0.050
D3uP	0.805	-2.513	0.464	-0.056
D3uS	2.012	-3.128	0.562	0.102
D3ux	0.456	-0.916	0.265	-0.021
D4rN	46014.510	-12.647	1.074	0.485
D4rP	1.004	-8.429	0.722	0.429
D4rS	5.458	-1.578	0.329	0.166
D4rx	0.658	-4.063	0.321	0.308
D4uN	1.103	-1.686	0.210	0.204
D4uP	0.940	-3.845	0.525	0.113
D4uS	2.946	-2.976	0.583	0.090
D4ux	0.465	-3.807	0.681	-0.038
U3rF	0.485	-5.952	0.368	0.478
U3rN	0.725	-7.802	0.661	0.380
U3rP	0.956	-9.035	0.841	0.387
U3rS	1.900	-1.996	0.439	0.012
U3rx	0.195	-8.785	0.664	0.556
U3uF	1.624	-2.213	0.324	0.098
U3uN	0.808	-1.928	0.330	-0.016
U3uP	1.019	-6.768	0.886	-0.007
U3uS	2.409	-3.041	0.574	0.066
U3ux	0.293	-2.631	0.230	0.127
U4rF	2.005	-10.834	0.875	0.583
U4rN	1.461	-7.539	0.580	0.466
U4rP	1.163	-8.166	0.729	0.465
U4rS	2.325	-2.582	0.380	0.196
U4rx	0.429	-6.684	0.541	0.429
U4uF	1.626	-1.065	0.271	0.105
U4uN	1.038	-0.690	0.343	-0.114
U4uP	1.139	-3.562	0.573	0.034
U4uS	2.327	-2.142	0.497	0.102
U4ux	0.351	-0.813	0.196	-0.011

Intersection Type Key	
D, U	divided, undivided
3, 4	3-legs, 4 or more legs
r, u	rural, urban
N, P, F, S	no control, partial stop (at least), full stop, signal
x	no data



Tables

Table 1: Statewide Five-Year Comparison

	2015	2016	2017	2018	2019	Previous 4 Year Average	% Change **
All Crashes							
Crashes (all)	161,370	165,250	161,668	158,166	156,755	161,614	-3.0
(K) FATAL	707	776	738	670	680	723	-5.9
(A) Suspected Serious Injury	2,607	2,590	2,473	2,332	2,326	2,501	-7.0
(B) Supected Minor Injury	8,471	9,024	9,129	8,958	9,334	8,896	4.9
(C) Possible Injury	13,492	14,175	13,125	12,301	11,432	13,273	-13.9
(O) None Detected	130,855	133,161	129,696	127,017	125,561	130,182	-3.5
Other	5,238	5,524	6,507	6,888	7,422	6,039	22.9
By Ownership							
Public Roads	136,315	140,524	136,969	134,280	132,374	137,022	-3.4
Private Property	9,337	9,303	8,760	8,212	8,068	8,903	-9.4
Parking Lots	15,718	15,423	15,939	15,674	16,313	15,689	4.0
Crashes with Known Volume	120,545	125,098	123,724	122,472	121,672	122,960	-1.0
Mainline Crashes	119,545	123,153	121,476	120,210	118,841	121,096	-1.9
Ramp Crashes	999	1,943	2,247	2,253	2,816	1,861	51.4
Other Segment Types	1	2	1	9	15	3	361.5
Vehicle Miles (billions)	41.43	42.58	43.13	43.81	43.81	43	2.5
Mileage	29,053.53	29,196.71	29,304.93	29,735.74	29,735.74	29,323	1.4
AADT	3,907.27	3,995.41	4,032.70	4,036.84	4,036.84	3,993	1.1
Crashes Rate	290.93	293.81	286.83	279.53	277.70	288	-3.5
Fatal Crashes Rate	1.52	1.63	1.49	1.37	1.39	1.50	-7.49
Injury Crashes Rate	49.44	51.15	48.76	46.19	45.20	48.89	-7.54

Not all streets have a known traffic volume, route number or milepost. Rates are calculated with AADT. Past versions of this report included ramps with their adjacent highway segment's AADT. That may not capture the proper traffic volume for a ramp and was changed, so numbers in this publication may be different.

* Crash rates are given in terms of crashes per 100 million vehicle-miles or (C/100 MVM).

** Percent change is the current year compared with the previous four-year average.

**Table 2: Statewide RURAL Crash Rates
by Highway Type (5-Year Average)**

Highway Type	Total Mileage*	AADT	Crashes per 100 MVM		
			All	Injury	Fatal
One-Lane	27	727	348	41	2.8
Two-Lane	22,715	1,306	218	53	2.8
Three-Lane	28	6,658	207	43	1.4
Four-Lane Divided (non-interstate or parkway)	589	9,584	96	23	1.4
Four-Lane Undivided	40	11,647	215	43	1.7
Parkway	556	9,068	66	12	1.0
Interstate	750	29,264	60	9	0.5
All	25,121	2,513	140	32	1.7

**Table 3: Statewide URBAN Crash Rates
by Highway Type (5-Year Average)**

Highway Type	Total Mileage*	AADT	Crashes per 100 MVM		
			All	Injury	Fatal
One-Lane	21	4,221	711	89	-
Two-Lane	2,696	5,408	510	87	1.4
Three-Lane	51	10,122	804	117	1.6
Four-Lane Divided (non-interstate or parkway)	580	19,271	376	67	1.4
Four-Lane Undivided	401	17,354	648	111	1.9
Parkway	47	10,213	117	21	1.2
Interstate	389	48,310	131	19	0.4
All	4,283	12,732	379	63	1.1

* Average for the five years.

MVM = Million Vehicle Miles Traveled.

**Table 4: Comparison of Crash Rate to Previous 4 Years
by Rural and Urban Highway Type**

Location	Highway Type	2015	2016	2017	2018	2019	Previous 4-Year Average	% Change *
Rural	One-Lane	393	477	240	305	369	354	4.31
	Two-Lane	223	228	218	213	206	221	-6.58
	Three-Lane	193	226	228	217	173	216	-19.91
	Four-Lane Divided (non-interstate or parkway)	96	100	94	94	95	96	-1.04
	Four-Lane Undivided	200	208	216	221	228	211	7.93
	Parkway	66	70	64	68	60	67	-10.45
	Interstate	61	58	58	64	59	60	-2.07
	All	144	145	138	138	132	141	-6.55
Urban	One-Lane	752	933	621	646	789	738	6.91
	Two-Lane	518	532	521	493	487	516	-5.62
	Three-Lane	805	835	738	816	825	799	3.32
	Four-Lane Divided (non-interstate or parkway)	376	383	374	376	370	377	-1.92
	Four-Lane Undivided	649	672	665	622	631	652	-3.22
	Parkway	103	122	114	148	120	122	-1.44
	Interstate	126	133	130	129	133	130	2.70
	All	367	375	367	355	355	366	-3.01

* Percent Change compares current year with previous four year average.

**Table 5: Crash Rates by County
for Identified System and All Roads**

County	Identified Number	Identified Rate	All Roads Total Number	All Roads Total Rate	Fatal Number	Fatal Rate	Fatal or Injury Number	Fatal or Injury Rate
ADAIR	1,062	120	1,248	116	16	1.5	246	23
ALLEN	1,761	239	2,247	256	27	3.1	392	45
ANDERSON	1,995	193	2,515	207	18	1.5	484	40
BALLARD	699	181	825	178	15	3.2	166	36
BARREN	5,380	213	6,923	238	42	1.4	1,353	47
BATH	813	95	1,030	111	13	1.4	223	24
BELL	2,315	212	3,105	231	24	1.8	671	50
BOONE	20,018	271	24,937	315	61	0.8	3,615	46
BOURBON	2,457	290	3,110	316	28	2.8	481	49
BOYD	5,549	309	7,317	331	19	0.9	1,170	53
BOYLE	3,362	288	4,167	312	21	1.6	665	50
BRACKEN	793	187	999	210	12	2.5	187	39
BREATHITT	963	178	1,179	173	26	3.8	407	60
BRECKINRIDGE	923	132	1,189	142	17	2.0	350	42
BULLITT	8,484	186	10,246	211	57	1.2	2,028	42
BUTLER	951	127	1,320	156	21	2.5	257	30
CALDWELL	1,391	166	1,779	189	13	1.4	346	37
CALLOWAY	4,090	329	5,216	320	24	1.5	781	48
CAMPBELL	11,539	319	15,666	393	46	1.2	1,781	45
CARLISLE	273	121	308	114	9	3.3	135	50
CARROLL	1,645	120	2,003	138	19	1.3	321	22
CARTER	2,456	144	2,885	144	24	1.2	528	26
CASEY	801	142	951	130	15	2.0	218	30
CHRISTIAN	7,650	189	9,608	192	53	1.1	2,027	41
CLARK	4,441	213	5,847	258	35	1.5	900	40
CLAY	1,344	161	1,688	164	23	2.2	626	61
CLINTON	847	200	1,055	204	13	2.5	201	39
CRITTENDEN	644	228	908	223	13	3.2	268	66
CUMBERLAND	438	152	562	156	8	2.2	118	33
DAVISS	12,843	365	18,260	439	58	1.4	2,760	66
EDMONSON	760	134	925	142	10	1.5	229	35
ELLIOTT	235	152	279	123	8	3.5	81	36
ESTILL	702	165	826	149	10	1.8	184	33
FAYETTE	54,294	406	69,210	466	160	1.1	10,920	74
FLEMING	984	168	1,199	173	8	1.2	216	31
FLOYD	3,209	173	3,854	173	48	2.2	1,093	49
FRANKLIN	6,028	233	7,760	270	24	0.8	1,019	36
FULTON	430	144	535	154	7	2.0	93	27
GALLATIN	1,257	95	1,413	100	16	1.1	220	16
GARRARD	1,581	207	1,917	246	15	1.9	397	51

Table 5 Continued.

County	Identified Number	Identified Rate	All Roads Total Number	All Roads Total Rate	Fatal Number	Fatal Rate	Fatal or Injury Number	Fatal or Injury Rate
GRANT	3,359	133	4,046	155	15	0.6	672	26
GRAVES	3,455	192	4,721	226	47	2.2	1,001	48
GRAYSON	2,712	190	3,169	190	46	2.8	749	45
GREEN	656	190	822	185	14	3.2	169	38
GREENUP	2,633	205	3,188	194	17	1.0	577	35
HANCOCK	509	129	650	144	8	1.8	147	33
HARDIN	12,620	203	15,019	213	79	1.1	2,483	35
HARLAN	1,762	173	2,163	175	18	1.5	548	44
HARRISON	1,811	310	2,457	340	8	1.1	428	59
HART	2,547	119	2,887	131	28	1.3	526	24
HENDERSON	6,098	270	7,939	311	29	1.1	1,389	54
HENRY	1,830	132	2,027	141	18	1.3	345	24
HICKMAN	280	108	329	112	4	1.4	71	24
HOPKINS	5,319	216	6,974	238	39	1.3	1,069	37
JACKSON	741	191	904	173	19	3.6	234	45
JEFFERSON	129,957	407	160,190	441	447	1.2	26,054	72
JESSAMINE	6,016	361	7,886	406	30	1.5	1,295	67
JOHNSON	1,705	188	2,125	201	19	1.8	498	47
KENTON	22,564	322	29,395	382	61	0.8	3,546	46
KNOTT	930	149	1,087	140	10	1.3	343	44
KNOX	2,512	194	3,295	210	31	2.0	851	54
LARUE	1,343	153	1,572	156	16	1.6	321	32
LAUREL	7,381	189	9,211	200	62	1.3	1,954	42
LAWRENCE	862	115	1,088	121	23	2.6	274	31
LEE	254	124	346	115	4	1.3	77	26
LESLIE	236	53	270	48	12	2.1	93	17
LETCHER	1,381	166	1,621	156	24	2.3	560	54
LEWIS	592	105	762	112	26	3.8	185	27
LINCOLN	1,616	160	2,100	181	29	2.5	475	41
LIVINGSTON	766	119	874	121	11	1.5	210	29
LOGAN	2,380	180	3,018	198	20	1.3	599	39
LYON	1,144	84	1,323	92	14	1.0	276	19
MCCRACKEN	10,075	281	12,403	308	58	1.4	2,771	69
MCCREARY	889	150	1,098	140	21	2.7	310	40
MCLEAN	1,014	246	1,182	234	10	2.0	323	64
MADISON	10,182	213	13,311	244	52	1.0	1,921	35
MAGOFFIN	721	146	830	130	18	2.8	270	42
MARION	1,936	270	2,320	277	22	2.6	431	51
MARSHALL	3,161	140	4,153	168	43	1.7	1,002	40
MARTIN	462	130	538	115	7	1.5	124	27

Table 5 Continued.

County	Identified Number	Identified Rate	All Roads Total Number	All Roads Total Rate	Fatal Number	Fatal Rate	Fatal or Injury Number	Fatal or Injury Rate
MASON	2,126	241	2,898	296	12	1.2	421	43
MEADE	1,605	154	2,315	185	38	3.0	683	55
MENIFEE	329	176	381	151	10	4.0	99	39
MERCER	1,749	197	2,256	221	23	2.3	406	40
METCALFE	1,028	207	1,276	208	11	1.8	266	43
MONROE	564	148	703	130	5	0.9	164	30
MONTGOMERY	3,189	240	4,053	278	32	2.2	810	55
MORGAN	729	149	847	135	7	1.1	228	36
MUHLENBERG	3,495	242	4,253	242	32	1.8	874	50
NELSON	4,687	203	5,680	225	54	2.1	998	40
NICHOLAS	552	239	740	268	14	5.1	123	45
OHIO	2,457	167	3,315	186	24	1.3	733	41
OLDHAM	5,218	218	6,061	220	24	0.9	964	35
OWEN	901	237	1,079	245	16	3.6	249	57
OWSLEY	214	158	264	141	8	4.3	70	37
PENDLETON	1,239	277	1,632	295	12	2.2	347	63
PERRY	2,715	229	3,567	217	42	2.6	969	59
PIKE	5,111	190	6,663	199	72	2.1	1,822	54
POWELL	1,148	156	1,351	165	22	2.7	325	40
PULASKI	6,966	239	8,949	252	62	1.7	1,525	43
ROBERTSON	156	249	187	251	0	0.0	37	50
ROCKCASTLE	2,460	108	2,749	112	23	0.9	486	20
ROWAN	2,953	213	3,885	243	22	1.4	644	40
RUSSELL	1,434	186	1,737	174	16	1.6	302	30
SCOTT	6,142	167	8,273	212	35	0.9	1,442	37
SHELBY	5,799	173	6,790	191	35	1.0	1,285	36
SIMPSON	2,520	137	2,992	154	21	1.1	628	32
SPENCER	1,126	193	1,396	199	15	2.1	342	49
TAYLOR	2,749	284	3,592	320	28	2.5	496	44
TODD	885	169	1,077	166	16	2.5	222	34
TRIGG	1,418	131	1,748	133	20	1.5	329	25
TRIMBLE	732	211	851	217	10	2.6	185	47
UNION	1,214	218	1,510	223	17	2.5	353	52
WARREN	18,687	267	24,087	314	79	1.0	4,194	55
WASHINGTON	1,135	158	1,330	170	16	2.0	279	36
WAYNE	1,321	179	1,699	182	21	2.2	370	40
WEBSTER	1,083	158	1,240	149	11	1.3	309	37
WHITLEY	4,367	166	5,214	169	43	1.4	1,267	41
WOLFE	670	143	750	142	21	4.0	166	31
WOODFORD	3,579	185	4,477	218	21	1.0	698	34
TOTAL	540,270	251	680,171	276	3525	1.4	119,438	48

Table 6: County Population (*2019 Census Estimate)

County	Population
Jefferson	766,757
Fayette	323,152
Kenton	166,998
Boone	133,581
Warren	132,896
Hardin	110,958
Daviess	101,511
Campbell	93,584
Madison	92,987
Bullitt	81,676
Christian	70,461
Oldham	66,799
McCracken	65,418
Pulaski	64,979
Laurel	60,813
Pike	57,876
Scott	57,004
Jessamine	54,115
Franklin	50,991
Shelby	49,024
Boyd	46,718
Nelson	46,233
Henderson	45,210
Hopkins	44,686
Barren	44,249
Calloway	39,001
Graves	37,266
Whitley	36,264
Clark	36,263
Floyd	35,589
Greenup	35,098
Knox	31,145
Marshall	31,100
Muhlenberg	30,622
Boyle	30,060
Meade	28,572
Montgomery	28,157
Logan	27,102
Carter	26,797
Woodford	26,734

County	Population
Grayson	26,427
Bell	26,032
Harlan	26,010
Taylor	25,769
Perry	25,758
Grant	25,069
Lincoln	24,549
Rowan	24,460
Ohio	23,994
Anderson	22,747
Johnson	22,188
Mercer	21,933
Letcher	21,553
Allen	21,315
Breckinridge	20,477
Wayne	20,333
Clay	19,901
Bourbon	19,788
Spencer	19,351
Marion	19,273
Adair	19,202
Hart	19,035
Harrison	18,886
Simpson	18,572
Russell	17,923
Garrard	17,666
McCreary	17,231
Mason	17,070
Rockcastle	16,695
Casey	16,159
Henry	16,126
Lawrence	15,317
Knott	14,806
Trigg	14,651
Pendleton	14,590
Fleming	14,581
Larue	14,398
Union	14,381
Estill	14,106
Jackson	13,329

County	Population
Morgan	13,309
Lewis	13,275
Webster	12,942
Butler	12,879
Caldwell	12,747
Breathitt	12,630
Bath	12,500
Powell	12,359
Todd	12,294
Magoffin	12,161
Edmonson	12,150
Washington	12,095
Martin	11,195
Green	10,941
Owen	10,901
Monroe	10,650
Carroll	10,631
Clinton	10,218
Metcalfe	10,071
Leslie	9,877
McLean	9,207
Livingston	9,194
Gallatin	8,869
Crittenden	8,806
Hancock	8,722
Trimble	8,471
Bracken	8,303
Lyon	8,210
Ballard	7,888
Elliott	7,517
Lee	7,403
Nicholas	7,269
Wolfe	7,157
Cumberland	6,614
Menifee	6,489
Fulton	5,969
Carlisle	4,760
Owsley	4,415
Hickman	4,380
Robertson	2,108
Total	4,467,673

* <https://www.census.gov/programs-surveys/popest/data/tables.html>

Table 7: Crash Rates by County and Population Category
Crashes on All Public Roads

County	Population	Population Category	Number of Crashes	Crash Rate (Crashes per 100 MVM)
Jefferson	766,757	Over 50,000	160190	441
Fayette	323,152	Over 50,000	69210	466
Kenton	166,998	Over 50,000	29395	382
Boone	133,581	Over 50,000	24937	315
Warren	132,896	Over 50,000	24087	314
Hardin	110,958	Over 50,000	15019	213
Daviess	101,511	Over 50,000	18260	439
Campbell	93,584	Over 50,000	15666	393
Madison	92,987	Over 50,000	13311	244
Bullitt	81,676	Over 50,000	10246	211
Christian	70,461	Over 50,000	9608	192
Oldham	66,799	Over 50,000	6061	220
McCracken	65,418	Over 50,000	12403	308
Pulaski	64,979	Over 50,000	8949	252
Laurel	60,813	Over 50,000	9211	200
Pike	57,876	Over 50,000	6663	199
Scott	57,004	Over 50,000	8273	212
Jessamine	54,115	Over 50,000	7886	406
Franklin	50,991	Over 50,000	7760	270
Shelby	49,024	25,000-50,000	6790	191
Boyd	46,718	25,000-50,000	7317	331
Nelson	46,233	25,000-50,000	5680	225
Henderson	45,210	25,000-50,000	7939	311
Hopkins	44,686	25,000-50,000	6974	238
Barren	44,249	25,000-50,000	6923	238
Calloway	39,001	25,000-50,000	5216	320
Graves	37,266	25,000-50,000	4721	226
Whitley	36,264	25,000-50,000	5214	169
Clark	36,263	25,000-50,000	5847	258
Floyd	35,589	25,000-50,000	3854	173
Greenup	35,098	25,000-50,000	3188	194
Knox	31,145	25,000-50,000	3295	210
Marshall	31,100	25,000-50,000	4153	168
Muhlenberg	30,622	25,000-50,000	4253	242
Boyle	30,060	25,000-50,000	4167	312
Meade	28,572	25,000-50,000	2315	185
Montgomery	28,157	25,000-50,000	4053	278
Logan	27,102	25,000-50,000	3018	198
Carter	26,797	25,000-50,000	2885	144
Woodford	26,734	25,000-50,000	4477	218

Table 7 Continued.

County	Population	Population Category	Number of Crashes	Crash Rate (Crashes per 100 MVM)
Grayson	26,427	25,000-50,000	3169	190
Bell	26,032	25,000-50,000	3105	231
Harlan	26,010	25,000-50,000	2163	175
Taylor	25,769	25,000-50,000	3592	320
Perry	25,758	25,000-50,000	3567	217
Grant	25,069	25,000-50,000	4046	155
Lincoln	24,549	15,000-24,999	2100	181
Rowan	24,460	15,000-24,999	3885	243
Ohio	23,994	15,000-24,999	3315	186
Anderson	22,747	15,000-24,999	2515	207
Johnson	22,188	15,000-24,999	2125	201
Mercer	21,933	15,000-24,999	2256	221
Letcher	21,553	15,000-24,999	1621	156
Allen	21,315	15,000-24,999	2247	256
Breckinridge	20,477	15,000-24,999	1189	142
Wayne	20,333	15,000-24,999	1699	182
Clay	19,901	15,000-24,999	1688	164
Bourbon	19,788	15,000-24,999	3110	316
Spencer	19,351	15,000-24,999	1396	199
Marion	19,273	15,000-24,999	2320	277
Adair	19,202	15,000-24,999	1248	116
Hart	19,035	15,000-24,999	2887	131
Harrison	18,886	15,000-24,999	2457	340
Simpson	18,572	15,000-24,999	2992	154
Russell	17,923	15,000-24,999	1737	174
Garrard	17,666	15,000-24,999	1917	246
McCreary	17,231	15,000-24,999	1098	140
Mason	17,070	15,000-24,999	2898	296
Rockcastle	16,695	15,000-24,999	2749	112
Casey	16,159	15,000-24,999	951	130
Henry	16,126	15,000-24,999	2027	141
Lawrence	15,317	15,000-24,999	1088	121
Knott	14,806	10,000-14,999	1087	140
Trigg	14,651	10,000-14,999	1748	133
Pendleton	14,590	10,000-14,999	1632	295
Fleming	14,581	10,000-14,999	1199	173
Larue	14,398	10,000-14,999	1572	156
Union	14,381	10,000-14,999	1510	223
Estill	14,106	10,000-14,999	826	149
Jackson	13,329	10,000-14,999	904	173

Table 7 Continued.

County	Population	Population Category	Number of Crashes	Crash Rate (Crashes per 100 MVM)
Morgan	13,309	10,000-14,999	847	135
Lewis	13,275	10,000-14,999	762	112
Webster	12,942	10,000-14,999	1240	149
Butler	12,879	10,000-14,999	1320	156
Caldwell	12,747	10,000-14,999	1779	189
Breathitt	12,630	10,000-14,999	1179	173
Bath	12,500	10,000-14,999	1030	111
Powell	12,359	10,000-14,999	1351	165
Todd	12,294	10,000-14,999	1077	166
Magoffin	12,161	10,000-14,999	830	130
Edmonson	12,150	10,000-14,999	925	142
Washington	12,095	10,000-14,999	1330	170
Martin	11,195	10,000-14,999	538	115
Green	10,941	10,000-14,999	822	185
Owen	10,901	10,000-14,999	1079	245
Monroe	10,650	10,000-14,999	703	130
Carroll	10,631	10,000-14,999	2003	138
Clinton	10,218	10,000-14,999	1055	204
Metcalfe	10,071	10,000-14,999	1276	208
Leslie	9,877	Under 10,000	270	48
McLean	9,207	Under 10,000	1182	234
Livingston	9,194	Under 10,000	874	121
Gallatin	8,869	Under 10,000	1413	100
Crittenden	8,806	Under 10,000	908	223
Hancock	8,722	Under 10,000	650	144
Trimble	8,471	Under 10,000	851	217
Bracken	8,303	Under 10,000	999	210
Lyon	8,210	Under 10,000	1323	92
Ballard	7,888	Under 10,000	825	178
Elliott	7,517	Under 10,000	279	123
Lee	7,403	Under 10,000	346	115
Nicholas	7,269	Under 10,000	740	268
Wolfe	7,157	Under 10,000	750	142
Cumberland	6,614	Under 10,000	562	156
Menifee	6,489	Under 10,000	381	151
Fulton	5,969	Under 10,000	535	154
Carlisle	4,760	Under 10,000	308	114
Owsley	4,415	Under 10,000	264	141
Hickman	4,380	Under 10,000	329	112
Robertson	2,108	Under 10,000	187	251

Table 8: Crash Rates by County And Population Category
Crashes on Roads with Known Traffic Volume

County	Population	Population Category	Number of Crashes	Crash Rate (Crashes per 100 MVM)
Jefferson	766,757	Over 50,000	129,957	407
Fayette	323,152	Over 50,000	54,294	406
Kenton	166,998	Over 50,000	22,564	322
Boone	133,581	Over 50,000	20,018	271
Warren	132,896	Over 50,000	18,687	267
Hardin	110,958	Over 50,000	12,620	203
Daviess	101,511	Over 50,000	12,843	365
Campbell	93,584	Over 50,000	11,539	319
Madison	92,987	Over 50,000	10,182	213
Bullitt	81,676	Over 50,000	8,484	186
Christian	70,461	Over 50,000	7,650	189
Oldham	66,799	Over 50,000	5,218	218
McCracken	65,418	Over 50,000	10,075	281
Pulaski	64,979	Over 50,000	6,966	239
Laurel	60,813	Over 50,000	7,381	189
Pike	57,876	Over 50,000	5,111	190
Scott	57,004	Over 50,000	6,142	167
Jessamine	54,115	Over 50,000	6,016	361
Franklin	50,991	Over 50,000	6,028	233
Shelby	49,024	25,000-50,000	5,799	173
Boyd	46,718	25,000-50,000	5,549	309
Nelson	46,233	25,000-50,000	4,687	203
Henderson	45,210	25,000-50,000	6,098	270
Hopkins	44,686	25,000-50,000	5,319	216
Barren	44,249	25,000-50,000	5,380	213
Calloway	39,001	25,000-50,000	4,090	329
Graves	37,266	25,000-50,000	3,455	192
Whitley	36,264	25,000-50,000	4,367	166
Clark	36,263	25,000-50,000	4,441	213
Floyd	35,589	25,000-50,000	3,209	173
Greenup	35,098	25,000-50,000	2,633	205
Knox	31,145	25,000-50,000	2,512	194
Marshall	31,100	25,000-50,000	3,161	140
Muhlenberg	30,622	25,000-50,000	3,495	242
Boyle	30,060	25,000-50,000	3,362	288
Meade	28,572	25,000-50,000	1,605	154
Montgomery	28,157	25,000-50,000	3,189	240
Logan	27,102	25,000-50,000	2,380	180
Carter	26,797	25,000-50,000	2,456	144
Woodford	26,734	25,000-50,000	3,579	185

Table 8 Continued.

County	Population	Population Category	Number of Crashes	Crash Rate (Crashes per 100 MVM)
Grayson	26,427	25,000-50,000	2,712	190
Bell	26,032	25,000-50,000	2,315	212
Harlan	26,010	25,000-50,000	1,762	173
Taylor	25,769	25,000-50,000	2,749	284
Perry	25,758	25,000-50,000	2,715	229
Grant	25,069	25,000-50,000	3,359	133
Lincoln	24,549	15,000-24,999	1,616	160
Rowan	24,460	15,000-24,999	2,953	213
Ohio	23,994	15,000-24,999	2,457	167
Anderson	22,747	15,000-24,999	1,995	193
Johnson	22,188	15,000-24,999	1,705	188
Mercer	21,933	15,000-24,999	1,749	197
Letcher	21,553	15,000-24,999	1,381	166
Allen	21,315	15,000-24,999	1,761	239
Breckinridge	20,477	15,000-24,999	923	132
Wayne	20,333	15,000-24,999	1,321	179
Clay	19,901	15,000-24,999	1,344	161
Bourbon	19,788	15,000-24,999	2,457	290
Spencer	19,351	15,000-24,999	1,126	193
Marion	19,273	15,000-24,999	1,936	270
Adair	19,202	15,000-24,999	1,062	120
Hart	19,035	15,000-24,999	2,547	119
Harrison	18,886	15,000-24,999	1,811	310
Simpson	18,572	15,000-24,999	2,520	137
Russell	17,923	15,000-24,999	1,434	186
Garrard	17,666	15,000-24,999	1,581	207
McCreary	17,231	15,000-24,999	889	150
Mason	17,070	15,000-24,999	2,126	241
Rockcastle	16,695	15,000-24,999	2,460	108
Casey	16,159	15,000-24,999	801	142
Henry	16,126	15,000-24,999	1,830	132
Lawrence	15,317	15,000-24,999	862	115
Knott	14,806	10,000-14,999	930	149
Trigg	14,651	10,000-14,999	1,418	131
Pendleton	14,590	10,000-14,999	1,239	277
Fleming	14,581	10,000-14,999	984	168
Larue	14,398	10,000-14,999	1,343	153
Union	14,381	10,000-14,999	1,214	218
Estill	14,106	10,000-14,999	702	165
Jackson	13,329	10,000-14,999	741	191

Table 8 Continued.

County	Population	Population Category	Number of Crashes	Crash Rate (Crashes per 100 MVM)
Morgan	13,309	10,000-14,999	729	149
Lewis	13,275	10,000-14,999	592	105
Webster	12,942	10,000-14,999	1,083	158
Butler	12,879	10,000-14,999	951	127
Caldwell	12,747	10,000-14,999	1,391	166
Breathitt	12,630	10,000-14,999	963	178
Bath	12,500	10,000-14,999	813	95
Powell	12,359	10,000-14,999	1,148	156
Todd	12,294	10,000-14,999	885	169
Magoffin	12,161	10,000-14,999	721	146
Edmonson	12,150	10,000-14,999	760	134
Washington	12,095	10,000-14,999	1,135	158
Martin	11,195	10,000-14,999	462	130
Green	10,941	10,000-14,999	656	190
Owen	10,901	10,000-14,999	901	237
Monroe	10,650	10,000-14,999	564	148
Carroll	10,631	10,000-14,999	1,645	120
Clinton	10,218	10,000-14,999	847	200
Metcalfe	10,071	10,000-14,999	1,028	207
Leslie	9,877	Under 10,000	236	53
McLean	9,207	Under 10,000	1,014	246
Livingston	9,194	Under 10,000	766	119
Gallatin	8,869	Under 10,000	1,257	95
Crittenden	8,806	Under 10,000	644	228
Hancock	8,722	Under 10,000	509	129
Trimble	8,471	Under 10,000	732	211
Bracken	8,303	Under 10,000	793	187
Lyon	8,210	Under 10,000	1,144	84
Ballard	7,888	Under 10,000	699	181
Elliott	7,517	Under 10,000	235	152
Lee	7,403	Under 10,000	254	124
Nicholas	7,269	Under 10,000	552	239
Wolfe	7,157	Under 10,000	670	143
Cumberland	6,614	Under 10,000	438	152
Menifee	6,489	Under 10,000	329	176
Fulton	5,969	Under 10,000	430	144
Carlisle	4,760	Under 10,000	273	121
Owsley	4,415	Under 10,000	214	158
Hickman	4,380	Under 10,000	280	108
Robertson	2,108	Under 10,000	156	249

**Table 9: Injury or Fatal Crash Rates
by County And Population Category (5-Year, All Roads)**

County	Population	Population Category	Number of Crashes	Crash Rate (Crashes per 100 MVM)
Jefferson	766,757	Over 50,000	26,054	71.7
Fayette	323,152	Over 50,000	10,920	73.6
Kenton	166,998	Over 50,000	3,546	46.1
Boone	133,581	Over 50,000	3,615	45.7
Warren	132,896	Over 50,000	4,194	54.7
Hardin	110,958	Over 50,000	2,483	35.2
Daviess	101,511	Over 50,000	2,760	66.3
Campbell	93,584	Over 50,000	1,781	44.7
Madison	92,987	Over 50,000	1,921	35.3
Bullitt	81,676	Over 50,000	2,028	41.7
Christian	70,461	Over 50,000	2,027	40.5
Oldham	66,799	Over 50,000	964	35.1
McCracken	65,418	Over 50,000	2,771	68.9
Pulaski	64,979	Over 50,000	1,525	42.9
Laurel	60,813	Over 50,000	1,954	42.4
Pike	57,876	Over 50,000	1,822	54.3
Scott	57,004	Over 50,000	1,442	36.9
Jessamine	54,115	Over 50,000	1,295	66.7
Franklin	50,991	Over 50,000	1,019	35.5
Shelby	49,024	25,000-50,000	1,285	36.2
Boyd	46,718	25,000-50,000	1,170	52.9
Nelson	46,233	25,000-50,000	998	39.6
Henderson	45,210	25,000-50,000	1,389	54.5
Hopkins	44,686	25,000-50,000	1,069	36.5
Barren	44,249	25,000-50,000	1,353	46.6
Calloway	39,001	25,000-50,000	781	47.9
Graves	37,266	25,000-50,000	1,001	47.8
Whitley	36,264	25,000-50,000	1,267	41.1
Clark	36,263	25,000-50,000	900	39.7
Floyd	35,589	25,000-50,000	1,093	49.0
Greenup	35,098	25,000-50,000	577	35.1
Knox	31,145	25,000-50,000	851	54.2
Marshall	31,100	25,000-50,000	1,002	40.5
Muhlenberg	30,622	25,000-50,000	874	49.7
Boyle	30,060	25,000-50,000	665	49.8
Meade	28,572	25,000-50,000	683	54.6
Montgomery	28,157	25,000-50,000	810	55.5
Logan	27,102	25,000-50,000	599	39.3
Carter	26,797	25,000-50,000	528	26.3
Woodford	26,734	25,000-50,000	698	34.0

Table 9 Continued.

County	Population	Population Category	Number of Crashes	Crash Rate (Crashes per 100 MVM)
Grayson	26,427	25,000-50,000	749	44.8
Bell	26,032	25,000-50,000	671	50.0
Harlan	26,010	25,000-50,000	548	44.3
Taylor	25,769	25,000-50,000	496	44.1
Perry	25,758	25,000-50,000	969	59.0
Grant	25,069	25,000-50,000	672	25.7
Lincoln	24,549	15,000-24,999	475	40.9
Rowan	24,460	15,000-24,999	644	40.3
Ohio	23,994	15,000-24,999	733	41.1
Anderson	22,747	15,000-24,999	484	39.7
Johnson	22,188	15,000-24,999	498	47.2
Mercer	21,933	15,000-24,999	406	39.8
Letcher	21,553	15,000-24,999	560	53.9
Allen	21,315	15,000-24,999	392	44.6
Breckinridge	20,477	15,000-24,999	350	41.7
Wayne	20,333	15,000-24,999	370	39.6
Clay	19,901	15,000-24,999	626	60.9
Bourbon	19,788	15,000-24,999	481	48.9
Spencer	19,351	15,000-24,999	342	48.8
Marion	19,273	15,000-24,999	431	51.4
Adair	19,202	15,000-24,999	246	22.8
Hart	19,035	15,000-24,999	526	23.9
Harrison	18,886	15,000-24,999	428	59.3
Simpson	18,572	15,000-24,999	628	32.2
Russell	17,923	15,000-24,999	302	30.3
Garrard	17,666	15,000-24,999	397	51.0
McCreary	17,231	15,000-24,999	310	39.6
Mason	17,070	15,000-24,999	421	43.1
Rockcastle	16,695	15,000-24,999	486	19.8
Casey	16,159	15,000-24,999	218	29.7
Henry	16,126	15,000-24,999	345	24.0
Lawrence	15,317	15,000-24,999	274	30.6
Knott	14,806	10,000-14,999	343	44.1
Trigg	14,651	10,000-14,999	329	25.0
Pendleton	14,590	10,000-14,999	347	62.7
Fleming	14,581	10,000-14,999	216	31.1
Larue	14,398	10,000-14,999	321	31.8
Union	14,381	10,000-14,999	353	52.1
Estill	14,106	10,000-14,999	184	33.2
Jackson	13,329	10,000-14,999	234	44.9

Table 9 Continued.

County	Population	Population Category	Number of Crashes	Crash Rate (Crashes per 100 MVM)
Morgan	13,309	10,000-14,999	228	36.3
Lewis	13,275	10,000-14,999	185	27.3
Webster	12,942	10,000-14,999	309	37.1
Butler	12,879	10,000-14,999	257	30.3
Caldwell	12,747	10,000-14,999	346	36.7
Breathitt	12,630	10,000-14,999	407	59.8
Bath	12,500	10,000-14,999	223	23.9
Powell	12,359	10,000-14,999	325	39.6
Todd	12,294	10,000-14,999	222	34.2
Magoffin	12,161	10,000-14,999	270	42.4
Edmonson	12,150	10,000-14,999	229	35.1
Washington	12,095	10,000-14,999	279	35.7
Martin	11,195	10,000-14,999	124	26.5
Green	10,941	10,000-14,999	169	38.0
Owen	10,901	10,000-14,999	249	56.6
Monroe	10,650	10,000-14,999	164	30.4
Carroll	10,631	10,000-14,999	321	22.1
Clinton	10,218	10,000-14,999	201	38.9
Metcalfe	10,071	10,000-14,999	266	43.3
Leslie	9,877	Under 10,000	93	16.6
McLean	9,207	Under 10,000	323	64.0
Livingston	9,194	Under 10,000	210	29.0
Gallatin	8,869	Under 10,000	220	15.6
Crittenden	8,806	Under 10,000	268	65.8
Hancock	8,722	Under 10,000	147	32.6
Trimble	8,471	Under 10,000	185	47.3
Bracken	8,303	Under 10,000	187	39.3
Lyon	8,210	Under 10,000	276	19.1
Ballard	7,888	Under 10,000	166	35.8
Elliott	7,517	Under 10,000	81	35.8
Lee	7,403	Under 10,000	77	25.5
Nicholas	7,269	Under 10,000	123	44.6
Wolfe	7,157	Under 10,000	166	31.5
Cumberland	6,614	Under 10,000	118	32.8
Menifee	6,489	Under 10,000	99	39.3
Fulton	5,969	Under 10,000	93	26.8
Carlisle	4,760	Under 10,000	135	50.0
Owsley	4,415	Under 10,000	70	37.3
Hickman	4,380	Under 10,000	71	24.3
Robertson	2,108	Under 10,000	37	49.7

**Table 10: Fatal Crash Rates
by County And Population Category (5-Year, All Roads)**

County	Population	Population Category	Number of Crashes	Crash Rate (Crashes per 100 MVM)
Jefferson	766,757	Over 50,000	447	1.23
Fayette	323,152	Over 50,000	160	1.08
Kenton	166,998	Over 50,000	61	0.79
Boone	133,581	Over 50,000	61	0.77
Warren	132,896	Over 50,000	79	1.03
Hardin	110,958	Over 50,000	79	1.12
Daviess	101,511	Over 50,000	58	1.39
Campbell	93,584	Over 50,000	46	1.15
Madison	92,987	Over 50,000	52	0.95
Bullitt	81,676	Over 50,000	57	1.17
Christian	70,461	Over 50,000	53	1.06
Oldham	66,799	Over 50,000	24	0.87
McCracken	65,418	Over 50,000	58	1.44
Pulaski	64,979	Over 50,000	62	1.74
Laurel	60,813	Over 50,000	62	1.34
Pike	57,876	Over 50,000	72	2.15
Scott	57,004	Over 50,000	35	0.90
Jessamine	54,115	Over 50,000	30	1.55
Franklin	50,991	Over 50,000	24	0.84
Shelby	49,024	25,000-50,000	35	0.99
Boyd	46,718	25,000-50,000	19	0.86
Nelson	46,233	25,000-50,000	54	2.14
Henderson	45,210	25,000-50,000	29	1.14
Hopkins	44,686	25,000-50,000	39	1.33
Barren	44,249	25,000-50,000	42	1.45
Calloway	39,001	25,000-50,000	24	1.47
Graves	37,266	25,000-50,000	47	2.25
Whitley	36,264	25,000-50,000	43	1.40
Clark	36,263	25,000-50,000	35	1.55
Floyd	35,589	25,000-50,000	48	2.15
Greenup	35,098	25,000-50,000	17	1.03
Knox	31,145	25,000-50,000	31	1.97
Marshall	31,100	25,000-50,000	43	1.74
Muhlenberg	30,622	25,000-50,000	32	1.82
Boyle	30,060	25,000-50,000	21	1.57
Meade	28,572	25,000-50,000	38	3.04
Montgomery	28,157	25,000-50,000	32	2.19
Logan	27,102	25,000-50,000	20	1.31
Carter	26,797	25,000-50,000	24	1.20
Woodford	26,734	25,000-50,000	21	1.02

Table 10 Continued.

County	Population	Population Category	Number of Crashes	Crash Rate (Crashes per 100 MVM)
Grayson	26,427	25,000-50,000	46	2.75
Bell	26,032	25,000-50,000	24	1.79
Harlan	26,010	25,000-50,000	18	1.46
Taylor	25,769	25,000-50,000	28	2.49
Perry	25,758	25,000-50,000	42	2.56
Grant	25,069	25,000-50,000	15	0.57
Lincoln	24,549	15,000-24,999	29	2.50
Rowan	24,460	15,000-24,999	22	1.38
Ohio	23,994	15,000-24,999	24	1.35
Anderson	22,747	15,000-24,999	18	1.48
Johnson	22,188	15,000-24,999	19	1.80
Mercer	21,933	15,000-24,999	23	2.26
Letcher	21,553	15,000-24,999	24	2.31
Allen	21,315	15,000-24,999	27	3.07
Breckinridge	20,477	15,000-24,999	17	2.02
Wayne	20,333	15,000-24,999	21	2.24
Clay	19,901	15,000-24,999	23	2.24
Bourbon	19,788	15,000-24,999	28	2.85
Spencer	19,351	15,000-24,999	15	2.14
Marion	19,273	15,000-24,999	22	2.62
Adair	19,202	15,000-24,999	16	1.48
Hart	19,035	15,000-24,999	28	1.27
Harrison	18,886	15,000-24,999	8	1.11
Simpson	18,572	15,000-24,999	21	1.08
Russell	17,923	15,000-24,999	16	1.61
Garrard	17,666	15,000-24,999	15	1.93
McCreary	17,231	15,000-24,999	21	2.68
Mason	17,070	15,000-24,999	12	1.23
Rockcastle	16,695	15,000-24,999	23	0.93
Casey	16,159	15,000-24,999	15	2.04
Henry	16,126	15,000-24,999	18	1.25
Lawrence	15,317	15,000-24,999	23	2.57
Knott	14,806	10,000-14,999	10	1.29
Trigg	14,651	10,000-14,999	20	1.52
Pendleton	14,590	10,000-14,999	12	2.17
Fleming	14,581	10,000-14,999	8	1.15
Larue	14,398	10,000-14,999	16	1.59
Union	14,381	10,000-14,999	17	2.51
Estill	14,106	10,000-14,999	10	1.80
Jackson	13,329	10,000-14,999	19	3.64

Table 10 Continued.

County	Population	Population Category	Number of Crashes	Crash Rate (Crashes per 100 MVM)
Morgan	13,309	10,000-14,999	7	1.12
Lewis	13,275	10,000-14,999	26	3.84
Webster	12,942	10,000-14,999	11	1.32
Butler	12,879	10,000-14,999	21	2.47
Caldwell	12,747	10,000-14,999	13	1.38
Breathitt	12,630	10,000-14,999	26	3.82
Bath	12,500	10,000-14,999	13	1.40
Powell	12,359	10,000-14,999	22	2.68
Todd	12,294	10,000-14,999	16	2.46
Magoffin	12,161	10,000-14,999	18	2.83
Edmonson	12,150	10,000-14,999	10	1.53
Washington	12,095	10,000-14,999	16	2.05
Martin	11,195	10,000-14,999	7	1.50
Green	10,941	10,000-14,999	14	3.15
Owen	10,901	10,000-14,999	16	3.63
Monroe	10,650	10,000-14,999	5	0.93
Carroll	10,631	10,000-14,999	19	1.31
Clinton	10,218	10,000-14,999	13	2.52
Metcalfe	10,071	10,000-14,999	11	1.79
Leslie	9,877	Under 10,000	12	2.14
McLean	9,207	Under 10,000	10	1.98
Livingston	9,194	Under 10,000	11	1.52
Gallatin	8,869	Under 10,000	16	1.13
Crittenden	8,806	Under 10,000	13	3.19
Hancock	8,722	Under 10,000	8	1.78
Trimble	8,471	Under 10,000	10	2.56
Bracken	8,303	Under 10,000	12	2.52
Lyon	8,210	Under 10,000	14	0.97
Ballard	7,888	Under 10,000	15	3.24
Elliott	7,517	Under 10,000	8	3.54
Lee	7,403	Under 10,000	4	1.33
Nicholas	7,269	Under 10,000	14	5.07
Wolfe	7,157	Under 10,000	21	3.98
Cumberland	6,614	Under 10,000	8	2.22
Menifee	6,489	Under 10,000	10	3.97
Fulton	5,969	Under 10,000	7	2.02
Carlisle	4,760	Under 10,000	9	3.33
Owsley	4,415	Under 10,000	8	4.26
Hickman	4,380	Under 10,000	4	1.37
Robertson	2,108	Under 10,000	0	0.00

**Table 11: Public Roads Crash Data for Each County
by County And Population Category (5-Year, All Roads)**

County	Number of Crashes by Year					Previous 4-Year Average	% Change to 4-Year Average	% Crashes Involving Alcohol	% Crashes Involving Drugs	% Fatal Crashes	% Injury or Fatal Crashes	% Crashes Involving Speeding
	2015	2016	2017	2018	2019							
ADAIR	307	226	250	213	253	249	1.6%	3.0%	3.0%	1.3%	20.3%	3.3%
ALLEN	420	502	412	463	450	449	0.2%	3.5%	1.2%	1.2%	18.4%	3.6%
ANDERSON	530	517	528	497	443	518	-14.5%	4.1%	2.1%	0.7%	19.5%	4.3%
BALLARD	165	168	189	178	126	175	-28.0%	5.4%	1.6%	1.8%	21.3%	4.0%
BARREN	1,363	1,498	1,421	1,361	1,284	1,411	-9.0%	2.6%	1.1%	0.6%	19.9%	3.5%
BATH	159	211	218	183	259	193	34.4%	2.9%	1.1%	1.3%	22.5%	3.8%
BELL	667	757	606	530	545	640	-14.8%	2.0%	3.1%	0.8%	22.1%	4.5%
BOONE	4,645	5,010	5,199	5,024	5,063	4,970	1.9%	2.8%	0.8%	0.2%	14.6%	5.5%
BOURBON	628	659	651	574	598	628	-4.8%	4.0%	1.2%	0.9%	16.2%	5.9%
BOYD	1,535	1,543	1,491	1,426	1,326	1,499	-11.5%	2.3%	1.6%	0.3%	16.1%	3.1%
BOYLE	866	854	816	867	764	851	-10.2%	3.0%	1.3%	0.5%	16.1%	5.5%
BRACKEN	240	222	208	174	155	211	-26.5%	5.2%	1.1%	1.2%	19.6%	9.9%
BREATHITT	274	235	225	236	210	243	-13.4%	2.4%	3.6%	2.1%	35.8%	4.3%
BRECKINRIDGE	240	243	230	235	241	237	1.7%	4.5%	0.4%	1.4%	29.9%	5.4%
BULLITT	1,971	2,071	2,030	2,145	2,029	2,054	-1.2%	2.5%	0.7%	0.6%	20.1%	3.0%
BUTLER	291	237	289	252	251	267	-6.1%	4.3%	1.1%	1.6%	20.6%	9.1%
CALDWELL	376	437	357	339	272	377	-27.9%	2.4%	1.1%	0.7%	19.7%	5.8%
CALLOWAY	1,041	1,073	1,108	974	1,020	1,049	-2.8%	3.5%	1.2%	0.5%	15.3%	3.1%
CAMPBELL	3,130	3,082	3,193	3,141	3,141	3,137	0.1%	3.3%	1.4%	0.3%	11.5%	3.9%
CARLISLE	82	53	50	59	64	61	4.9%	4.5%	2.9%	2.9%	45.5%	6.2%
CARROLL	439	407	346	394	417	397	5.2%	2.8%	1.3%	0.8%	16.6%	4.5%
CARTER	537	576	592	607	573	578	-0.9%	2.5%	1.8%	0.8%	18.8%	7.1%
CASEY	221	91	227	183	230	181	27.4%	3.2%	2.0%	1.6%	23.9%	1.3%
CHRISTIAN	1,919	1,955	1,957	1,906	1,875	1,934	-3.1%	3.8%	1.0%	0.6%	21.5%	5.2%
CLARK	1,136	1,204	1,234	1,160	1,117	1,184	-5.6%	3.1%	1.1%	0.6%	15.7%	4.2%
CLAY	388	354	347	345	255	359	-28.9%	2.7%	5.1%	1.4%	37.8%	4.6%
CLINTON	224	250	208	163	210	211	-0.6%	2.4%	1.9%	1.2%	20.4%	2.5%
CRITTENDEN	206	186	190	172	154	189	-18.3%	4.6%	2.3%	1.4%	30.5%	6.1%
CUMBERLAND	115	128	99	81	139	106	31.4%	4.3%	2.0%	1.4%	22.1%	1.2%
DAVISS	3,637	3,712	3,642	3,718	3,552	3,677	-3.4%	2.5%	1.1%	0.3%	15.3%	3.4%
EDMONSON	208	211	191	178	137	197	-30.5%	3.4%	1.1%	1.0%	25.2%	7.9%
ELLIOTT	44	64	67	58	46	58	-21.0%	8.2%	4.7%	2.9%	30.8%	6.1%
ESTILL	102	185	146	162	231	149	55.3%	2.8%	4.1%	1.2%	22.8%	4.0%
FAYETTE	13,787	14,276	14,113	13,582	13,526	13,940	-3.0%	2.9%	0.8%	0.2%	15.9%	6.6%
FLEMING	249	232	208	265	245	239	2.7%	3.7%	2.3%	0.7%	18.4%	3.0%
FLOYD	873	789	725	721	748	777	-3.7%	4.2%	5.2%	1.2%	29.2%	3.5%
FRANKLIN	1,622	1,549	1,516	1,544	1,532	1,558	-1.7%	3.2%	1.6%	0.3%	13.3%	4.5%
FULTON	128	138	73	102	94	110	-14.7%	4.5%	1.5%	1.3%	18.1%	2.4%
GALLATIN	281	281	296	283	272	285	-4.6%	3.3%	1.1%	1.1%	16.3%	4.0%
GARRARD	402	400	373	370	373	386	-3.4%	3.8%	1.0%	0.8%	21.0%	5.5%

Table 11 Continued.

County	Number of Crashes by Year					Previous 4-Year Average	% Change to 4-Year Average	% Crashes Involving Alcohol	% Crashes Involving Drugs	% Fatal Crashes	% Injury or Fatal Crashes	% Crashes Involving Speeding
	2015	2016	2017	2018	2019							
GRANT	780	812	790	822	842	801	5.1%	2.6%	1.0%	0.4%	16.8%	6.4%
GRAVES	822	944	967	991	997	931	7.1%	3.1%	1.8%	1.0%	21.9%	5.4%
GRAYSON	586	688	631	649	617	639	-3.4%	3.2%	1.3%	1.5%	24.5%	3.9%
GREEN	163	185	163	187	124	175	-28.9%	2.7%	0.5%	1.7%	21.7%	3.2%
GREENUP	659	655	620	612	644	637	1.2%	2.8%	1.5%	0.5%	18.4%	2.4%
HANCOCK	135	155	137	115	108	136	-20.3%	2.6%	0.9%	1.2%	23.5%	5.1%
HARDIN	2,914	2,934	3,095	3,047	3,030	2,998	1.1%	3.0%	1.0%	0.5%	16.8%	4.8%
HARLAN	464	394	435	443	427	434	-1.6%	3.3%	4.1%	0.8%	26.0%	3.0%
HARRISON	463	542	496	444	512	486	5.3%	2.6%	1.1%	0.3%	17.7%	5.0%
HART	636	535	555	578	583	576	1.2%	2.1%	1.1%	1.0%	18.7%	7.0%
HENDERSON	1,687	1,671	1,509	1,570	1,505	1,609	-6.5%	2.3%	1.0%	0.3%	17.7%	3.2%
HENRY	411	445	395	375	401	407	-1.4%	4.4%	0.8%	0.9%	17.5%	5.7%
HICKMAN	56	62	87	55	69	65	6.2%	3.0%	1.5%	1.2%	22.8%	6.1%
HOPKINS	1,498	1,442	1,329	1,386	1,319	1,414	-6.7%	2.1%	1.0%	0.6%	15.7%	4.7%
JACKSON	200	205	178	140	181	181	0.1%	2.8%	1.8%	2.1%	26.9%	4.6%
JEFFERSON	32,639	33,914	31,866	30,891	30,955	32,328	-4.2%	2.2%	0.6%	0.3%	16.4%	3.2%
JESSAMINE	1,467	1,597	1,609	1,634	1,580	1,577	0.2%	3.1%	1.6%	0.4%	16.6%	5.4%
JOHNSON	441	457	412	431	384	435	-11.8%	3.0%	3.2%	0.9%	24.0%	3.2%
KENTON	5,677	5,901	5,970	5,872	5,984	5,855	2.2%	3.4%	1.5%	0.2%	12.2%	5.3%
KNOTT	228	224	222	217	196	223	-12.0%	2.7%	4.7%	0.9%	32.3%	2.2%
KNOX	717	690	632	644	613	671	-8.6%	2.3%	3.7%	0.9%	26.4%	5.5%
LARUE	317	331	322	320	282	323	-12.6%	4.1%	1.7%	1.0%	21.0%	7.2%
LAUREL	1,788	1,778	1,929	1,849	1,867	1,836	1.7%	2.1%	1.8%	0.7%	21.5%	3.9%
LAWRENCE	230	213	224	227	194	224	-13.2%	3.8%	1.7%	2.1%	26.8%	2.7%
LEE	76	68	76	64	62	71	-12.7%	4.3%	3.5%	1.2%	22.8%	4.6%
LESLIE	29	75	40	25	102	42	141.4%	2.2%	5.2%	4.4%	36.2%	3.0%
LETCHER	240	307	353	373	348	318	9.3%	3.4%	3.8%	1.5%	35.2%	5.2%
LEWIS	108	139	170	176	169	148	14.0%	5.6%	2.5%	3.4%	26.2%	5.1%
LINCOLN	438	435	432	409	387	429	-9.7%	3.0%	1.7%	1.4%	23.4%	2.7%
LIVINGSTON	174	186	190	191	133	185	-28.2%	3.4%	1.9%	1.1%	24.8%	6.2%
LOGAN	612	647	569	611	581	610	-4.7%	2.9%	0.8%	0.6%	20.2%	4.7%
LYON	295	297	224	251	256	267	-4.0%	2.9%	1.9%	1.1%	21.2%	6.2%
MCCRACKEN	2,394	2,576	2,403	2,528	2,504	2,475	1.2%	2.6%	1.1%	0.5%	22.6%	5.4%
MCCREARY	238	216	213	213	218	220	-0.9%	3.3%	3.7%	1.9%	29.4%	4.9%
MCLEAN	233	228	244	233	244	235	4.1%	4.1%	1.8%	0.8%	27.7%	5.8%
MADISON	2,763	2,775	2,778	2,541	2,457	2,714	-9.5%	3.1%	1.4%	0.4%	14.7%	7.0%
MAGOFFIN	184	169	158	183	136	174	-21.6%	3.6%	4.9%	2.2%	33.9%	5.7%
MARION	500	492	506	444	378	486	-22.1%	4.4%	1.2%	0.9%	19.2%	2.5%
MARSHALL	837	829	872	813	802	838	-4.3%	3.6%	1.7%	1.0%	24.8%	4.9%
MARTIN	14	138	119	137	130	102	27.5%	2.6%	3.2%	1.3%	24.2%	3.2%

Table 11 Continued.

County	Number of Crashes by Year					Previous 4-Year Average	% Change to 4-Year Average	% Crashes Involving Alcohol	% Crashes Involving Drugs	% Fatal Crashes	% Injury or Fatal Crashes	% Crashes Involving Speeding
	2015	2016	2017	2018	2019							
MASON	613	619	610	541	516	596	-13.4%	4.9%	1.8%	0.4%	14.8%	5.3%
MEADE	472	487	472	404	480	459	4.6%	5.2%	0.8%	1.6%	30.4%	4.4%
MENIFEE	56	102	67	60	96	71	34.7%	3.9%	1.6%	2.6%	28.1%	2.9%
MERCER	498	484	422	433	419	459	-8.8%	3.9%	1.2%	1.0%	18.8%	4.8%
METCALFE	249	273	261	257	236	260	-9.2%	3.5%	1.2%	0.9%	21.3%	5.4%
MONROE	74	167	156	153	153	138	11.3%	2.7%	1.8%	0.7%	24.0%	3.7%
MONTGOMERY	827	839	858	707	825	808	2.1%	3.6%	1.9%	0.8%	20.4%	3.9%
MORGAN	137	148	184	177	202	162	25.1%	3.8%	2.0%	0.8%	27.4%	4.8%
MUHLENBERG	892	921	800	816	824	857	-3.9%	2.3%	1.8%	0.8%	21.0%	3.4%
NELSON	1,125	1,120	1,120	1,148	1,169	1,128	3.6%	3.9%	0.9%	1.0%	18.1%	3.2%
NICHOLAS	154	149	152	146	139	150	-7.5%	4.2%	2.4%	1.9%	17.6%	5.9%
OHIO	612	657	700	674	673	661	1.9%	3.3%	1.7%	0.7%	22.6%	4.7%
OLDHAM	1,179	1,266	1,141	1,294	1,186	1,220	-2.8%	3.4%	0.7%	0.4%	16.2%	4.9%
OWEN	241	232	210	225	171	227	-24.7%	4.3%	2.2%	1.5%	24.2%	4.5%
OWSLEY	57	92	34	25	56	52	7.7%	2.3%	1.9%	3.0%	28.0%	5.7%
PENDLETON	358	337	323	315	300	333	-10.0%	3.7%	1.5%	0.7%	21.6%	5.7%
PERRY	743	728	707	737	652	729	-10.5%	2.7%	3.6%	1.2%	27.7%	2.0%
PIKE	1,425	1,347	1,338	1,315	1,239	1,356	-8.6%	4.1%	5.0%	1.1%	27.9%	5.3%
POWELL	336	327	252	228	208	286	-27.2%	3.2%	1.6%	1.6%	24.6%	2.4%
PULASKI	1,815	1,814	1,793	1,748	1,781	1,793	-0.6%	2.1%	1.2%	0.7%	17.4%	5.1%
ROBERTSON	25	52	44	31	36	38	-5.3%	1.6%	1.1%	0.0%	19.7%	6.9%
ROCKCASTLE	561	521	536	634	499	563	-11.4%	1.9%	1.7%	0.8%	18.1%	6.8%
ROWAN	834	830	826	692	703	796	-11.6%	2.8%	1.6%	0.6%	16.9%	4.7%
RUSSELL	346	377	363	341	310	357	-13.1%	3.2%	1.6%	0.9%	18.0%	2.1%
SCOTT	1,583	1,670	1,663	1,831	1,531	1,687	-9.2%	3.3%	0.9%	0.4%	17.6%	5.0%
SHELBY	1,285	1,429	1,362	1,425	1,290	1,375	-6.2%	3.7%	1.2%	0.5%	19.2%	4.2%
SIMPSON	548	608	630	596	611	596	2.6%	3.5%	1.0%	0.7%	21.2%	6.9%
SPENCER	262	276	304	304	250	287	-12.7%	5.2%	1.8%	1.0%	24.9%	6.2%
TAYLOR	727	742	760	720	644	737	-12.6%	2.3%	0.8%	0.8%	14.4%	3.7%
TODD	197	222	236	222	200	219	-8.8%	2.7%	0.9%	1.5%	21.7%	6.5%
TRIGG	355	402	363	332	297	363	-18.2%	3.1%	1.7%	1.1%	19.3%	7.4%
TRIMBLE	179	156	192	175	149	176	-15.1%	4.5%	1.8%	1.2%	22.3%	4.6%
UNION	316	306	265	334	289	305	-5.3%	3.2%	0.9%	1.1%	24.0%	7.2%
WARREN	4,605	4,945	5,043	4,770	4,730	4,841	-2.3%	2.9%	0.8%	0.3%	17.6%	4.3%
WASHINGTON	271	270	254	282	253	269	-6.0%	3.9%	0.8%	1.2%	21.7%	5.7%
WAYNE	369	360	257	351	362	334	8.3%	2.4%	0.9%	1.2%	22.7%	6.0%
WEBSTER	275	248	228	235	254	247	3.0%	2.2%	1.5%	0.9%	25.2%	3.4%
WHITLEY	1,149	1,008	1,028	1,004	1,026	1,047	-2.0%	2.8%	2.2%	0.8%	24.9%	5.9%
WOLFE	176	136	151	150	137	153	-10.6%	2.1%	1.7%	2.8%	23.7%	5.9%
WOODFORD	851	943	933	897	857	906	-5.4%	3.8%	0.8%	0.5%	15.9%	5.7%

**Table 12: Crashes Involving Alcohol
by County And Population Category (5-Year, All Roads)**

County	Population	Category	5-Year Number		Percent of Total	
			All	Age 16-20	All	Age 16-20
Jefferson	766,757	Over 50,000	3488	404	2.7%	0.3%
Fayette	323,152	Over 50,000	2022	273	3.7%	0.5%
Kenton	166,998	Over 50,000	1012	111	4.5%	0.5%
Boone	133,581	Over 50,000	694	104	3.5%	0.5%
Warren	132,896	Over 50,000	687	97	3.7%	0.5%
Hardin	110,958	Over 50,000	450	40	3.6%	0.3%
Daviess	101,511	Over 50,000	453	54	3.5%	0.4%
Campbell	93,584	Over 50,000	513	50	4.4%	0.4%
Madison	92,987	Over 50,000	412	60	4.0%	0.6%
Bullitt	81,676	Over 50,000	252	38	3.0%	0.4%
Christian	70,461	Over 50,000	365	43	4.8%	0.6%
Oldham	66,799	Over 50,000	208	22	4.0%	0.4%
McCracken	65,418	Over 50,000	328	39	3.3%	0.4%
Pulaski	64,979	Over 50,000	191	29	2.7%	0.4%
Laurel	60,813	Over 50,000	191	17	2.6%	0.2%
Pike	57,876	Over 50,000	271	43	5.3%	0.8%
Scott	57,004	Over 50,000	270	40	4.4%	0.7%
Jessamine	54,115	Over 50,000	245	35	4.1%	0.6%
Franklin	50,991	Over 50,000	249	17	4.1%	0.3%
Shelby	49,024	25,000-50,000	250	31	4.3%	0.5%
Boyd	46,718	25,000-50,000	172	21	3.1%	0.4%
Nelson	46,233	25,000-50,000	220	31	4.7%	0.7%
Henderson	45,210	25,000-50,000	179	25	2.9%	0.4%
Hopkins	44,686	25,000-50,000	149	21	2.8%	0.4%
Barren	44,249	25,000-50,000	182	24	3.4%	0.4%
Calloway	39,001	25,000-50,000	185	34	4.5%	0.8%
Graves	37,266	25,000-50,000	148	20	4.3%	0.6%
Whitley	36,264	25,000-50,000	146	26	3.3%	0.6%
Clark	36,263	25,000-50,000	182	19	4.1%	0.4%
Floyd	35,589	25,000-50,000	163	10	5.1%	0.3%
Greenup	35,098	25,000-50,000	88	9	3.3%	0.3%
Knox	31,145	25,000-50,000	75	9	3.0%	0.4%
Marshall	31,100	25,000-50,000	151	16	4.8%	0.5%
Muhlenberg	30,622	25,000-50,000	97	21	2.8%	0.6%
Boyle	30,060	25,000-50,000	124	13	3.7%	0.4%
Meade	28,572	25,000-50,000	121	17	7.5%	1.1%
Montgomery	28,157	25,000-50,000	146	17	4.6%	0.5%
Logan	27,102	25,000-50,000	87	12	3.7%	0.5%
Carter	26,797	25,000-50,000	71	8	2.9%	0.3%
Woodford	26,734	25,000-50,000	169	22	4.7%	0.6%

Table 12 Continued.

County	Population	Category	5-Year Number		Percent of Total	
			All	Age 16-20	All	Age 16-20
Grayson	26,427	25,000-50,000	101	11	3.7%	0.4%
Bell	26,032	25,000-50,000	61	7	2.6%	0.3%
Harlan	26,010	25,000-50,000	71	15	4.0%	0.9%
Taylor	25,769	25,000-50,000	81	21	2.9%	0.8%
Perry	25,758	25,000-50,000	96	11	3.5%	0.4%
Grant	25,069	25,000-50,000	104	16	3.1%	0.5%
Lincoln	24,549	15,000-24,999	62	15	3.8%	0.9%
Rowan	24,460	15,000-24,999	109	11	3.7%	0.4%
Ohio	23,994	15,000-24,999	111	22	4.5%	0.9%
Anderson	22,747	15,000-24,999	102	19	5.1%	1.0%
Johnson	22,188	15,000-24,999	63	11	3.7%	0.6%
Mercer	21,933	15,000-24,999	87	12	5.0%	0.7%
Letcher	21,553	15,000-24,999	55	6	4.0%	0.4%
Allen	21,315	15,000-24,999	79	6	4.5%	0.3%
Breckinridge	20,477	15,000-24,999	53	11	5.7%	1.2%
Wayne	20,333	15,000-24,999	41	7	3.1%	0.5%
Clay	19,901	15,000-24,999	46	6	3.4%	0.4%
Bourbon	19,788	15,000-24,999	123	12	5.0%	0.5%
Spencer	19,351	15,000-24,999	72	6	6.4%	0.5%
Marion	19,273	15,000-24,999	103	12	5.3%	0.6%
Adair	19,202	15,000-24,999	38	6	3.6%	0.6%
Hart	19,035	15,000-24,999	60	5	2.4%	0.2%
Harrison	18,886	15,000-24,999	65	12	3.6%	0.7%
Simpson	18,572	15,000-24,999	104	12	4.1%	0.5%
Russell	17,923	15,000-24,999	55	8	3.8%	0.6%
Garrard	17,666	15,000-24,999	72	14	4.6%	0.9%
McCreary	17,231	15,000-24,999	36	9	4.0%	1.0%
Mason	17,070	15,000-24,999	142	17	6.7%	0.8%
Rockcastle	16,695	15,000-24,999	51	10	2.1%	0.4%
Casey	16,159	15,000-24,999	30	7	3.7%	0.9%
Henry	16,126	15,000-24,999	89	10	4.9%	0.5%
Lawrence	15,317	15,000-24,999	41	4	4.8%	0.5%
Knott	14,806	10,000-14,999	29	5	3.1%	0.5%
Trigg	14,651	10,000-14,999	55	9	3.9%	0.6%
Pendleton	14,590	10,000-14,999	60	11	4.8%	0.9%
Fleming	14,581	10,000-14,999	44	7	4.5%	0.7%
Larue	14,398	10,000-14,999	64	11	4.8%	0.8%
Union	14,381	10,000-14,999	48	6	4.0%	0.5%
Estill	14,106	10,000-14,999	23	6	3.3%	0.9%
Jackson	13,329	10,000-14,999	25	2	3.4%	0.3%

Table 12 Continued.

County	Population	Category	5-Year Number		Percent of Total	
			All	Age 16-20	All	Age 16-20
Morgan	13,309	10,000-14,999	32	5	4.4%	0.7%
Lewis	13,275	10,000-14,999	43	7	7.3%	1.2%
Webster	12,942	10,000-14,999	27	4	2.5%	0.4%
Butler	12,879	10,000-14,999	57	4	6.0%	0.4%
Caldwell	12,747	10,000-14,999	42	4	3.0%	0.3%
Breathitt	12,630	10,000-14,999	28	3	2.9%	0.3%
Bath	12,500	10,000-14,999	30	4	3.7%	0.5%
Powell	12,359	10,000-14,999	43	7	3.7%	0.6%
Todd	12,294	10,000-14,999	29	8	3.3%	0.9%
Magoffin	12,161	10,000-14,999	30	3	4.2%	0.4%
Edmonson	12,150	10,000-14,999	31	6	4.1%	0.8%
Washington	12,095	10,000-14,999	52	6	4.6%	0.5%
Martin	11,195	10,000-14,999	14	0	3.0%	0.0%
Green	10,941	10,000-14,999	22	7	3.4%	1.1%
Owen	10,901	10,000-14,999	46	6	5.1%	0.7%
Monroe	10,650	10,000-14,999	19	0	3.4%	0.0%
Carroll	10,631	10,000-14,999	56	5	3.4%	0.3%
Clinton	10,218	10,000-14,999	25	9	3.0%	1.1%
Metcalfe	10,071	10,000-14,999	45	6	4.4%	0.6%
Leslie	9,877	Under 10,000	6	0	2.5%	0.0%
McLean	9,207	Under 10,000	48	3	4.7%	0.3%
Livingston	9,194	Under 10,000	30	0	3.9%	0.0%
Gallatin	8,869	Under 10,000	46	3	3.7%	0.2%
Crittenden	8,806	Under 10,000	42	8	6.5%	1.2%
Hancock	8,722	Under 10,000	17	3	3.3%	0.6%
Trimble	8,471	Under 10,000	38	5	5.2%	0.7%
Bracken	8,303	Under 10,000	52	5	6.6%	0.6%
Lyon	8,210	Under 10,000	38	5	3.3%	0.4%
Ballard	7,888	Under 10,000	45	4	6.4%	0.6%
Elliott	7,517	Under 10,000	23	6	9.8%	2.6%
Lee	7,403	Under 10,000	15	3	5.9%	1.2%
Nicholas	7,269	Under 10,000	31	1	5.6%	0.2%
Wolfe	7,157	Under 10,000	16	0	2.4%	0.0%
Cumberland	6,614	Under 10,000	24	3	5.5%	0.7%
Menifee	6,489	Under 10,000	15	1	4.6%	0.3%
Fulton	5,969	Under 10,000	24	4	5.6%	0.9%
Carlisle	4,760	Under 10,000	14	0	5.1%	0.0%
Owsley	4,415	Under 10,000	6	1	2.8%	0.5%
Hickman	4,380	Under 10,000	10	0	3.6%	0.0%
Robertson	2,108	Under 10,000	3	0	1.9%	0.0%

**Table 13: Summary of Alcohol Convictions
by County (5-Year) as Collected by Police**

County	Alcohol Convictions					Total Convictions Over 5-Years	Annual Average Alcohol Convictions Per 1,000 Licensed Drivers	Convictions Per Alcohol-Related Crash
	2015	2016	2017	2018	2019			
ADAIR	47	72	67	54	101	341	5.6	3.4
ALLEN	54	61	44	53	62	274	4.1	4.4
ANDERSON	56	78	110	75	85	404	4.9	4.8
BALLARD	25	29	14	24	56	148	5.2	2.6
BARREN	150	118	144	134	191	737	5.1	3.9
BATH	23	19	16	20	35	113	2.8	3.2
BELL	90	87	79	135	95	486	6.4	5.1
BOONE	462	443	348	324	332	1909	4.2	5.8
BOURBON	76	100	78	98	76	428	6.4	5.6
BOYD	189	191	285	224	229	1118	7.3	4.9
BOYLE	129	86	106	75	98	494	5.1	5.0
BRACKEN	13	22	11	8	16	70	2.3	4.4
BREATHITT	60	68	53	69	105	355	8.4	3.4
BRECKINRIDGE	39	31	33	28	47	178	2.6	3.8
BULLITT	138	112	99	80	87	516	1.8	5.9
BUTLER	49	37	30	18	33	167	3.9	5.1
CALDWELL	36	44	41	40	44	205	4.6	4.7
CALLOWAY	164	134	219	155	100	772	6.6	7.7
CAMPBELL	370	375	331	304	297	1677	5.5	5.6
CARLISLE	13	10	8	1	13	45	2.5	3.5
CARROLL	57	69	47	27	65	265	7.9	4.1
CARTER	75	73	82	88	153	471	5.2	3.1
CASEY	54	46	48	27	88	263	5.1	3.0
CHRISTIAN	214	200	165	170	203	952	4.9	4.7
CLARK	167	129	97	85	139	617	5.0	4.4
CLAY	78	101	101	91	116	487	8.3	4.2
CLINTON	43	29	18	24	26	140	4.3	5.4
CRITTENDEN	25	29	27	25	15	121	4.2	8.1
CUMBERLAND	34	37	47	37	43	198	8.6	4.6
DAVISS	331	272	216	214	319	1352	3.9	4.2
EDMONSON	31	24	19	28	24	126	3.0	5.3
ELLIOTT	6	10	7	16	12	51	2.4	4.3
ESTILL	65	37	58	46	59	265	5.5	4.5
FAYETTE	929	813	801	699	702	3944	4.2	5.6
FLEMING	59	60	59	46	35	259	5.3	7.4
FLOYD	217	208	140	198	177	940	7.9	5.3
FRANKLIN	190	238	196	193	194	1011	6.0	5.2
FULTON	71	61	96	79	32	339	17.9	10.6
GALLATIN	43	49	22	29	46	189	6.5	4.1
GARRARD	80	62	72	46	41	301	5.1	7.3

Table 13 Continued.

County	Alcohol Convictions					Total Convictions Over 5-Years	Annual Average Alcohol Convictions Per 1,000 Licensed Drivers	Convictions Per Alcohol-Related Crash
	2015	2016	2017	2018	2019			
GRANT	65	92	51	44	49	301	3.6	6.1
GRAVES	199	182	149	79	152	761	6.2	5.0
GRAYSON	141	96	107	80	141	565	6.2	4.0
GREEN	19	9	17	11	20	76	2.0	3.8
GREENUP	138	105	119	124	175	661	5.2	3.8
HANCOCK	16	13	9	7	17	62	2.0	3.6
HARDIN	477	419	376	280	413	1965	5.5	4.8
HARLAN	124	122	119	50	133	548	6.4	4.1
HARRISON	56	47	38	31	34	206	3.3	6.1
HART	62	52	36	33	73	256	4.3	3.5
HENDERSON	237	205	165	145	144	896	5.9	6.2
HENRY	78	63	84	40	56	321	5.8	5.7
HICKMAN	18	13	17	10	7	65	4.2	9.3
HOPKINS	275	210	217	213	171	1086	7.1	6.4
JACKSON	25	24	54	47	23	173	3.9	7.5
JEFFERSON	862	668	744	710	909	3893	1.6	4.3
JESSAMINE	157	231	172	165	237	962	5.6	4.1
JOHNSON	102	95	75	81	83	436	5.9	5.3
KENTON	442	529	523	599	574	2667	5.0	4.6
KNOTT	101	98	62	81	63	405	8.7	6.4
KNOX	187	191	170	191	168	907	9.2	5.4
LARUE	39	33	51	40	38	201	3.9	5.3
LAUREL	530	554	483	418	465	2450	12.2	5.3
LAWRENCE	58	59	41	34	36	228	4.5	6.3
LEE	22	14	38	34	38	146	7.0	3.8
LESLIE	19	21	12	18	24	94	2.7	3.9
LETCHER	44	77	57	63	61	302	4.2	5.0
LEWIS	37	40	35	44	48	204	4.5	4.3
LINCOLN	81	73	76	79	43	352	4.2	8.2
LIVINGSTON	31	36	21	12	37	137	4.0	3.7
LOGAN	117	106	94	98	96	511	5.5	5.3
LYON	60	67	63	59	88	337	12.2	3.8
MCCRACKEN	403	221	297	286	355	1562	6.8	4.4
MCCREARY	96	87	136	97	104	520	10.6	5.0
MCLEAN	105	58	36	41	47	287	8.7	6.1
MADISON	105	121	287	229	307	1049	3.6	3.4
MAGOFFIN	44	37	82	95	92	350	8.5	3.8
MARION	86	119	50	41	60	356	5.7	5.9
MARSHALL	316	339	146	124	152	1077	9.3	7.1
MARTIN	102	86	54	58	44	344	10.6	7.8

Table 13 Continued.

County	Alcohol Convictions					Total Convictions Over 5-Years	Annual Average Alcohol Convictions Per 1,000 Licensed Drivers	Convictions Per Alcohol-Related Crash
	2015	2016	2017	2018	2019			
MASON	26	34	67	44	80	251	4.4	3.1
MEADE	78	52	50	39	56	275	2.8	4.9
MENIFEE	8	9	11	4	18	50	2.2	2.8
MERCER	51	70	78	63	35	297	3.8	8.5
METCALFE	22	33	30	32	48	165	4.7	3.4
MONROE	43	39	51	64	59	256	7.0	4.3
MONTGOMERY	66	73	74	75	98	386	4.2	3.9
MORGAN	25	63	19	22	44	173	4.4	3.9
MUHLENBERG	152	128	104	103	115	602	5.7	5.2
NELSON	184	174	114	84	120	676	4.1	5.6
NICHOLAS	43	49	35	26	43	196	8.0	4.6
OHIO	75	129	87	77	123	491	6.2	4.0
OLDHAM	175	123	126	109	104	637	2.8	6.1
OWEN	25	28	23	21	16	113	3.0	7.1
OWSLEY	10	43	13	20	8	94	6.5	11.8
PENDLETON	24	22	25	19	27	117	2.3	4.3
PERRY	93	82	78	57	128	438	5.1	3.4
PIKE	102	109	103	86	234	634	3.4	2.7
POWELL	45	52	57	41	48	243	5.8	5.1
PULASKI	258	211	195	276	306	1246	5.6	4.1
ROBERTSON	3	2	2	5	3	15	1.9	5.0
ROCKCASTLE	66	62	61	64	64	317	5.8	5.0
ROWAN	120	158	111	93	106	588	8.0	5.5
RUSSELL	63	65	65	47	87	327	5.3	3.8
SCOTT	185	158	165	196	168	872	4.7	5.2
SHELBY	211	204	160	192	228	995	6.5	4.4
SIMPSON	42	55	65	76	87	325	5.0	3.7
SPENCER	40	52	62	80	47	281	4.0	6.0
TAYLOR	81	67	65	55	99	367	4.3	3.7
TODD	58	38	19	51	27	193	5.2	7.1
TRIGG	92	87	55	46	37	317	6.5	8.6
TRIMBLE	21	13	17	16	33	100	3.3	3.0
UNION	65	38	29	43	41	216	4.5	5.3
WARREN	464	443	398	347	499	2151	5.5	4.3
WASHINGTON	26	15	19	24	22	106	2.6	4.8
WAYNE	44	46	25	40	71	226	3.5	3.2
WEBSTER	25	47	12	8	23	115	2.6	5.0
WHITLEY	123	151	168	164	255	861	7.5	3.4
WOLFE	29	35	42	51	24	181	7.8	7.5
WOODFORD	152	107	120	124	94	597	6.5	6.4
TOTAL	14,443	13,642	12,797	11,962	14,093	66,937	5.4	5.1

**Table 14: Alcohol Conviction Rates
by County and Population (5-Year)**

County	Population	Population Category	Annual Average Alcohol Convictions Per 1,000 Licensed Drivers
Adair	19,202	15,000-24,999	5.47
Allen	21,315	15,000-24,999	3.70
Anderson	22,747	15,000-24,999	4.47
Ballard	7,888	Under 10,000	4.50
Barren	44,249	25,000-50,000	4.58
Bath	12,500	10,000-14,999	2.44
Bell	26,032	25,000-50,000	5.56
Boone	133,581	Over 50,000	4.07
Bourbon	19,788	15,000-24,999	6.20
Boyd	46,718	25,000-50,000	6.67
Boyle	30,060	25,000-50,000	4.62
Bracken	8,303	Under 10,000	2.13
Breathitt	12,630	10,000-14,999	7.89
Breckinridge	20,477	15,000-24,999	2.34
Bullitt	81,676	Over 50,000	1.67
Butler	12,879	10,000-14,999	3.56
Caldwell	12,747	10,000-14,999	4.28
Calloway	39,001	25,000-50,000	6.62
Campbell	93,584	Over 50,000	5.22
Carlisle	4,760	Under 10,000	2.30
Carroll	10,631	10,000-14,999	7.10
Carter	26,797	25,000-50,000	4.31
Casey	16,159	15,000-24,999	4.49
Christian	70,461	Over 50,000	4.55
Clark	36,263	25,000-50,000	4.72
Clay	19,901	15,000-24,999	8.16
Clinton	10,218	10,000-14,999	3.93
Crittenden	8,806	Under 10,000	3.97
Cumberland	6,614	Under 10,000	8.27
Daviess	101,511	Over 50,000	3.48
Edmonson	12,150	10,000-14,999	2.64
Elliott	7,517	Under 10,000	2.07
Estill	14,106	10,000-14,999	5.28
Fayette	323,152	Over 50,000	4.07
Fleming	14,581	10,000-14,999	4.83
Floyd	35,589	25,000-50,000	7.45
Franklin	50,991	Over 50,000	5.70
Fulton	5,969	Under 10,000	17.58
Gallatin	8,869	Under 10,000	6.05
Garrard	17,666	15,000-24,999	5.06

Table 14 Continued.

County	Population	Population Category	Annual Average Alcohol Convictions Per 1,000 Licensed Drivers
Grant	25,069	25,000-50,000	3.45
Graves	37,266	25,000-50,000	5.65
Grayson	26,427	25,000-50,000	5.59
Green	10,941	10,000-14,999	1.78
Greenup	35,098	25,000-50,000	5.08
Hancock	8,722	Under 10,000	1.91
Hardin	110,958	Over 50,000	5.08
Harlan	26,010	25,000-50,000	5.30
Harrison	18,886	15,000-24,999	3.21
Hart	19,035	15,000-24,999	4.14
Henderson	45,210	25,000-50,000	5.36
Henry	16,126	15,000-24,999	5.48
Hickman	4,380	Under 10,000	4.00
Hopkins	44,686	25,000-50,000	6.56
Jackson	13,329	10,000-14,999	3.78
Jefferson	766,757	Over 50,000	1.42
Jessamine	54,115	Over 50,000	5.28
Johnson	22,188	15,000-24,999	5.22
Kenton	166,998	Over 50,000	4.68
Knott	14,806	10,000-14,999	8.46
Knox	31,145	25,000-50,000	8.63
Larue	14,398	10,000-14,999	3.54
Laurel	60,813	Over 50,000	11.69
Lawrence	15,317	15,000-24,999	4.15
Lee	7,403	Under 10,000	6.17
Leslie	9,877	Under 10,000	2.46
Letcher	21,553	15,000-24,999	3.77
Lewis	13,275	10,000-14,999	4.44
Lincoln	24,549	15,000-24,999	4.14
Livingston	9,194	Under 10,000	3.55
Logan	27,102	25,000-50,000	5.30
Lyon	8,210	Under 10,000	11.07
McCracken	65,418	Over 50,000	6.44
McCreary	17,231	15,000-24,999	10.12
McLean	9,207	Under 10,000	4.92
Madison	92,987	Over 50,000	4.85
Magoffin	12,161	10,000-14,999	10.13
Marion	19,273	15,000-24,999	4.68
Marshall	31,100	25,000-50,000	5.00
Martin	11,195	10,000-14,999	6.59

Table 14 Continued.

County	Population	Population Category	Annual Average Alcohol Convictions Per 1,000 Licensed Drivers
Mason	17,070	15,000-24,999	6.24
Meade	28,572	25,000-50,000	2.73
Menifee	6,489	Under 10,000	2.15
Mercer	21,933	15,000-24,999	3.65
Metcalfe	10,071	10,000-14,999	4.28
Monroe	10,650	10,000-14,999	6.65
Montgomery	28,157	25,000-50,000	3.80
Morgan	13,309	10,000-14,999	4.11
Muhlenberg	30,622	25,000-50,000	5.22
Nelson	46,233	25,000-50,000	3.88
Nicholas	7,269	Under 10,000	7.44
Ohio	23,994	15,000-24,999	5.43
Oldham	66,799	Over 50,000	2.75
Owen	10,901	10,000-14,999	2.81
Owsley	4,415	Under 10,000	6.22
Pendleton	14,590	10,000-14,999	2.17
Perry	25,758	25,000-50,000	4.36
Pike	57,876	Over 50,000	2.23
Powell	12,359	10,000-14,999	5.38
Pulaski	64,979	Over 50,000	5.62
Robertson	2,108	Under 10,000	2.12
Rockcastle	16,695	15,000-24,999	5.11
Rowan	24,460	15,000-24,999	7.52
Russell	17,923	15,000-24,999	5.03
Scott	57,004	Over 50,000	4.54
Shelby	49,024	25,000-50,000	6.21
Simpson	18,572	15,000-24,999	4.72
Spencer	19,351	15,000-24,999	3.74
Taylor	25,769	25,000-50,000	3.94
Todd	12,294	10,000-14,999	4.92
Trigg	14,651	10,000-14,999	6.34
Trimble	8,471	Under 10,000	2.51
Union	14,381	10,000-14,999	4.10
Warren	132,896	Over 50,000	5.01
Washington	12,095	10,000-14,999	2.42
Wayne	20,333	15,000-24,999	3.12
Webster	12,942	10,000-14,999	2.36
Whitley	36,264	25,000-50,000	7.08
Wolfe	7,157	Under 10,000	7.65
Woodford	26,734	25,000-50,000	6.14

**Table 15: DUI Conviction Rates
by County and Population (5-Year)**

County	Population	Population Category	Total DUI Arrests	Total DUI Convictions	Conviction Percentage
Adair	19,202	15,000-24,999	694	339	71.8
Allen	21,315	15,000-24,999	508	250	84.7
Anderson	22,747	15,000-24,999	734	375	80.8
Ballard	7,888	Under 10,000	285	132	66.3
Barren	44,249	25,000-50,000	1,568	681	72.7
Bath	12,500	10,000-14,999	243	102	80.3
Bell	26,032	25,000-50,000	1,596	452	61.2
Boone	133,581	Over 50,000	2,906	1,867	85.4
Bourbon	19,788	15,000-24,999	723	431	86.5
Boyd	46,718	25,000-50,000	1,731	1,090	80.1
Boyle	30,060	25,000-50,000	818	458	85.9
Bracken	8,303	Under 10,000	102	66	83.5
Breathitt	12,630	10,000-14,999	638	355	85.1
Breckinridge	20,477	15,000-24,999	257	165	82.5
Bullitt	81,676	Over 50,000	1,188	489	73.0
Butler	12,879	10,000-14,999	293	157	73.7
Caldwell	12,747	10,000-14,999	319	197	81.4
Calloway	39,001	25,000-50,000	1,204	804	82.2
Campbell	93,584	Over 50,000	2,340	1,658	84.6
Carlisle	4,760	Under 10,000	89	43	67.2
Carroll	10,631	10,000-14,999	592	248	66.0
Carter	26,797	25,000-50,000	973	404	72.3
Casey	16,159	15,000-24,999	451	237	72.0
Christian	70,461	Over 50,000	1,635	902	78.4
Clark	36,263	25,000-50,000	1,030	598	85.6
Clay	19,901	15,000-24,999	1,029	503	66.4
Clinton	10,218	10,000-14,999	313	133	90.5
Crittenden	8,806	Under 10,000	170	120	84.5
Cumberland	6,614	Under 10,000	384	198	79.8
Daviess	101,511	Over 50,000	2,832	1,218	72.7
Edmonson	12,150	10,000-14,999	227	116	69.9
Elliott	7,517	Under 10,000	125	45	65.2
Estill	14,106	10,000-14,999	447	263	79.2
Fayette	323,152	Over 50,000	6,019	3,962	88.4
Fleming	14,581	10,000-14,999	536	246	74.8
Floyd	35,589	25,000-50,000	1,733	935	79.1
Franklin	50,991	Over 50,000	1,851	993	80.9
Fulton	5,969	Under 10,000	626	349	72.1
Gallatin	8,869	Under 10,000	400	179	64.4
Garrard	17,666	15,000-24,999	432	302	85.6

Table 15 Continued.

County	Population	Population Category	Total DUI Arrests	Total DUI Convictions	Conviction Percentage
Grant	25,069	25,000-50,000	590	295	69.1
Graves	37,266	25,000-50,000	1,504	723	73.3
Grayson	26,427	25,000-50,000	921	511	81.1
Green	10,941	10,000-14,999	152	71	76.3
Greenup	35,098	25,000-50,000	1,027	674	86.1
Hancock	8,722	Under 10,000	106	62	82.7
Hardin	110,958	Over 50,000	3,397	1,869	74.4
Harlan	26,010	25,000-50,000	1,578	480	79.5
Harrison	18,886	15,000-24,999	398	207	83.1
Hart	19,035	15,000-24,999	557	251	68.4
Henderson	45,210	25,000-50,000	1,705	855	80.2
Henry	16,126	15,000-24,999	583	314	75.8
Hickman	4,380	Under 10,000	130	64	66.7
Hopkins	44,686	25,000-50,000	1,718	1,052	80.2
Jackson	13,329	10,000-14,999	287	170	76.6
Jefferson	766,757	Over 50,000	9,221	3,632	82.2
Jessamine	54,115	Over 50,000	1,531	925	88.1
Johnson	22,188	15,000-24,999	801	409	75.2
Kenton	166,998	Over 50,000	4,114	2,601	82.9
Knott	14,806	10,000-14,999	687	419	81.8
Knox	31,145	25,000-50,000	1,649	889	78.3
Larue	14,398	10,000-14,999	395	183	70.1
Laurel	60,813	Over 50,000	3,270	2,407	89.2
Lawrence	15,317	15,000-24,999	409	221	78.9
Lee	7,403	Under 10,000	265	136	87.2
Leslie	9,877	Under 10,000	224	91	59.9
Letcher	21,553	15,000-24,999	559	287	75.9
Lewis	13,275	10,000-14,999	311	208	86.3
Lincoln	24,549	15,000-24,999	572	351	82.0
Livingston	9,194	Under 10,000	214	125	77.6
Logan	27,102	25,000-50,000	812	501	77.6
Lyon	8,210	Under 10,000	552	316	78.0
McCracken	65,418	Over 50,000	2,390	1,541	78.1
McCreary	17,231	15,000-24,999	851	519	78.6
McLean	9,207	Under 10,000	278	169	85.4
Madison	92,987	Over 50,000	2,491	1,410	79.8
Magoffin	12,161	10,000-14,999	781	437	83.4
Marion	19,273	15,000-24,999	641	302	72.6
Marshall	31,100	25,000-50,000	1,017	599	74.7
Martin	11,195	10,000-14,999	448	229	80.4

Table 15 Continued.

County	Population	Population Category	Total DUI Arrests	Total DUI Convictions	Conviction Percentage
Mason	17,070	15,000-24,999	633	375	82.6
Meade	28,572	25,000-50,000	405	269	83.3
Menifee	6,489	Under 10,000	82	49	86.0
Mercer	21,933	15,000-24,999	470	296	83.6
Metcalfe	10,071	10,000-14,999	247	154	81.5
Monroe	10,650	10,000-14,999	496	251	80.7
Montgomery	28,157	25,000-50,000	638	360	80.9
Morgan	13,309	10,000-14,999	337	166	75.1
Muhlenberg	30,622	25,000-50,000	1,128	572	87.3
Nelson	46,233	25,000-50,000	1,088	648	82.0
Nicholas	7,269	Under 10,000	356	188	82.5
Ohio	23,994	15,000-24,999	932	452	73.1
Oldham	66,799	Over 50,000	1,048	626	88.7
Owen	10,901	10,000-14,999	233	109	69.0
Owsley	4,415	Under 10,000	170	94	82.5
Pendleton	14,590	10,000-14,999	204	113	83.1
Perry	25,758	25,000-50,000	1,152	405	72.8
Pike	57,876	Over 50,000	2,141	449	60.3
Powell	12,359	10,000-14,999	480	237	77.2
Pulaski	64,979	Over 50,000	2,329	1,268	81.0
Robertson	2,108	Under 10,000	28	17	94.4
Rockcastle	16,695	15,000-24,999	787	290	65.2
Rowan	24,460	15,000-24,999	885	564	88.4
Russell	17,923	15,000-24,999	600	315	79.5
Scott	57,004	Over 50,000	1,444	838	84.5
Shelby	49,024	25,000-50,000	1,770	949	84.4
Simpson	18,572	15,000-24,999	535	310	86.6
Spencer	19,351	15,000-24,999	580	264	77.0
Taylor	25,769	25,000-50,000	648	346	75.7
Todd	12,294	10,000-14,999	324	190	76.6
Trigg	14,651	10,000-14,999	540	319	79.0
Trimble	8,471	Under 10,000	164	79	78.2
Union	14,381	10,000-14,999	345	207	77.8
Warren	132,896	Over 50,000	4,259	1,971	76.1
Washington	12,095	10,000-14,999	204	101	78.3
Wayne	20,333	15,000-24,999	489	208	81.3
Webster	12,942	10,000-14,999	244	108	72.0
Whitley	36,264	25,000-50,000	1,446	827	77.1
Wolfe	7,157	Under 10,000	310	182	85.8
Woodford	26,734	25,000-50,000	894	583	89.4

**Table 16: Summary of Reckless Driving Convictions
by County (5-Year)**

County	Number of Crashes by Year					5-Year Total	5-Year Average Convictions Per 1,000 Licensed Drivers
	2015	2016	2017	2018	2019		
ADAIR	13	13	13	14	14	73	1.20
ALLEN	7	1	11	14	14	47	0.70
ANDERSON	21	28	31	24	24	121	1.47
BALLARD	11	13	5	8	8	46	1.63
BARREN	39	50	39	17	17	156	1.07
BATH	3	1	3	9	9	20	0.49
BELL	14	4	9	9	9	39	0.51
BOONE	41	36	39	49	49	188	0.41
BOURBON	16	13	6	9	9	53	0.79
BOYD	25	15	28	23	23	107	0.70
BOYLE	33	38	16	12	12	115	1.19
BRACKEN	2	6	7	5	5	20	0.66
BREATHITT	5	8	4	5	5	26	0.61
BRECKINRIDGE	1	2	9	5	5	29	0.42
BULLITT	61	35	30	36	36	199	0.69
BUTLER	2	4	3	3	3	14	0.33
CALDWELL	10	19	28	14	14	76	1.70
CALLOWAY	23	18	16	8	8	76	0.65
CAMPBELL	25	23	28	16	16	103	0.33
CARLISLE	2	1	2	0	0	7	0.39
CARROLL	4	5	6	8	8	25	0.75
CARTER	26	15	19	8	8	77	0.85
CASEY	1	10	3	10	10	30	0.58
CHRISTIAN	48	37	45	42	42	211	1.09
CLARK	15	9	9	9	9	52	0.42
CLAY	13	12	9	10	10	50	0.86
CLINTON	3	5	7	3	3	20	0.61
CRITTENDEN	4	3	7	6	6	25	0.87
CUMBERLAND	11	11	15	8	8	56	2.43
DAVISS	54	47	63	66	66	276	0.81
EDMONSON	3	3	6	7	7	19	0.45
ELLIOTT	1	6	2	1	1	12	0.57
ESTILL	2	1	1	1	1	7	0.15
FAYETTE	84	89	95	88	88	446	0.48
FLEMING	10	9	19	10	10	65	1.33
FLOYD	27	24	29	28	28	130	1.10
FRANKLIN	50	54	47	47	47	231	1.37
FULTON	8	7	6	7	7	32	1.69
GALLATIN	6	14	20	8	8	58	1.99
GARRARD	14	12	7	12	12	59	1.00

Table 16 Continued.

County	Number of Crashes by Year					5-Year Total	5-Year Average Convictions Per 1,000 Licensed Drivers
	2015	2016	2017	2018	2019		
GRANT	16	9	7	13	13	56	0.67
GRAVES	61	51	32	26	26	190	1.54
GRAYSON	33	33	46	19	19	144	1.59
GREEN	4	3	4	5	5	19	0.50
GREENUP	10	18	9	12	12	57	0.45
HANCOCK	2	8	2	7	7	25	0.79
HARDIN	78	74	72	77	77	338	0.95
HARLAN	21	14	14	11	11	66	0.78
HARRISON	7	9	6	8	8	36	0.57
HART	10	9	19	14	14	56	0.95
HENDERSON	52	56	38	16	16	184	1.21
HENRY	19	13	15	9	9	63	1.13
HICKMAN	0	2	1	2	2	6	0.39
HOPKINS	28	28	29	27	27	140	0.91
JACKSON	3	6	9	4	4	26	0.59
JEFFERSON	218	254	364	238	238	1,212	0.49
JESSAMINE	17	29	16	12	12	86	0.50
JOHNSON	8	11	19	16	16	65	0.88
KENTON	76	69	70	72	72	345	0.64
KNOTT	1	2	1	3	3	8	0.17
KNOX	36	12	6	8	8	67	0.68
LARUE	9	7	14	12	12	47	0.92
LAUREL	11	22	14	15	15	74	0.37
LAWRENCE	15	14	7	5	5	46	0.90
LEE	4	2	3	8	8	24	1.15
LESLIE	3	3	1	4	4	12	0.34
LETCHER	7	1	5	6	6	20	0.28
LEWIS	5	3	4	3	3	17	0.38
LINCOLN	20	12	22	8	8	69	0.83
LIVINGSTON	9	13	6	6	6	41	1.21
LOGAN	25	26	29	27	27	130	1.41
LYON	64	52	64	21	21	211	7.66
MCCRACKEN	39	34	35	15	15	143	0.62
MCCREARY	13	8	10	8	8	53	1.08
MCLEAN	4	4	4	2	2	18	0.55
MADISON	37	30	15	25	25	117	0.41
MAGOFFIN	3	1	8	5	5	18	0.44
MARION	28	22	20	18	18	99	1.58
MARSHALL	14	17	10	10	10	56	0.48
MARTIN	11	9	5	2	2	29	0.89

Table 16 Continued.

County	Number of Crashes by Year					5-Year Total	5-Year Average Convictions Per 1,000 Licensed Drivers
	2015	2016	2017	2018	2019		
MASON	14	16	5	18	18	62	1.08
MEADE	28	33	25	14	14	106	1.10
MENIFEE	1	3	3	1	1	10	0.44
MERCER	11	14	11	13	13	57	0.72
METCALFE	6	3	6	8	8	27	0.77
MONROE	5	1	4	1	1	16	0.44
MONTGOMERY	16	14	15	7	7	58	0.63
MORGAN	3	3	2	1	1	11	0.28
MUHLENBERG	34	38	33	20	20	149	1.41
NELSON	36	38	36	18	18	142	0.87
NICHOLAS	10	7	7	3	3	33	1.34
OHIO	4	4	5	4	4	27	0.34
OLDHAM	12	8	7	8	8	41	0.18
OWEN	5	2	2	2	2	13	0.34
OWSLEY	1	4	5	5	5	16	1.10
PENDLETON	2	8	10	9	9	33	0.65
PERRY	8	27	27	25	25	103	1.20
PIKE	29	19	25	14	14	100	0.53
POWELL	6	9	5	1	1	23	0.55
PULASKI	14	22	20	20	20	89	0.40
ROBERTSON	1	1	1	0	0	3	0.39
ROCKCASTLE	9	10	7	6	6	41	0.75
ROWAN	19	19	18	11	11	81	1.10
RUSSELL	7	8	10	4	4	34	0.55
SCOTT	23	30	24	16	16	107	0.57
SHELBY	34	34	21	32	32	139	0.91
SIMPSON	28	28	19	44	44	173	2.66
SPENCER	14	9	5	8	8	40	0.57
TAYLOR	16	18	14	13	13	76	0.89
TODD	10	17	10	18	18	57	1.53
TRIGG	59	37	27	19	19	150	3.07
TRIMBLE	3	4	1	1	1	9	0.30
UNION	17	19	13	7	7	64	1.33
WARREN	65	80	60	65	65	318	0.82
WASHINGTON	9	9	12	11	11	48	1.17
WAYNE	9	15	9	11	11	53	0.83
WEBSTER	9	14	10	7	7	46	1.05
WHITLEY	25	32	20	25	25	117	1.02
WOLFE	1	3	0	1	1	7	0.30
WOODFORD	18	10	14	13	13	61	0.66
TOTAL	2,380	2,361	2,345	1,962	1,962	10,549	0.90

**Table 17: Percent of Crashes Involving Drugs
by County for All Roads (5-Year)**

County	Population	Population Category	Number of Crashes	Percent of Total Crashes
Adair	19,202	15,000-24,999	37	2.96%
Allen	21,315	15,000-24,999	26	1.16%
Anderson	22,747	15,000-24,999	52	2.07%
Ballard	7,888	Under 10,000	13	1.58%
Barren	44,249	25,000-50,000	75	1.08%
Bath	12,500	10,000-14,999	11	1.07%
Bell	26,032	25,000-50,000	96	3.09%
Boone	133,581	Over 50,000	207	0.83%
Bourbon	19,788	15,000-24,999	36	1.16%
Boyd	46,718	25,000-50,000	120	1.64%
Boyle	30,060	25,000-50,000	55	1.32%
Bracken	8,303	Under 10,000	11	1.10%
Breathitt	12,630	10,000-14,999	42	3.56%
Breckinridge	20,477	15,000-24,999	5	0.42%
Bullitt	81,676	Over 50,000	76	0.74%
Butler	12,879	10,000-14,999	15	1.14%
Caldwell	12,747	10,000-14,999	20	1.12%
Calloway	39,001	25,000-50,000	64	1.23%
Campbell	93,584	Over 50,000	221	1.41%
Carlisle	4,760	Under 10,000	9	2.92%
Carroll	10,631	10,000-14,999	26	1.30%
Carter	26,797	25,000-50,000	52	1.80%
Casey	16,159	15,000-24,999	19	2.00%
Christian	70,461	Over 50,000	94	0.98%
Clark	36,263	25,000-50,000	67	1.15%
Clay	19,901	15,000-24,999	86	5.09%
Clinton	10,218	10,000-14,999	20	1.90%
Crittenden	8,806	Under 10,000	21	2.31%
Cumberland	6,614	Under 10,000	11	1.96%
Daviess	101,511	Over 50,000	204	1.12%
Edmonson	12,150	10,000-14,999	10	1.08%
Elliott	7,517	Under 10,000	13	4.66%
Estill	14,106	10,000-14,999	34	4.12%
Fayette	323,152	Over 50,000	566	0.82%
Fleming	14,581	10,000-14,999	28	2.34%
Floyd	35,589	25,000-50,000	201	5.22%
Franklin	50,991	Over 50,000	128	1.65%
Fulton	5,969	Under 10,000	8	1.50%
Gallatin	8,869	Under 10,000	15	1.06%
Garrard	17,666	15,000-24,999	20	1.04%
Grant	25,069	25,000-50,000	42	1.04%

Table 17 Continued.

County	Population	Population Category	Number of Crashes	Percent of Total Crashes
Grant	25,069	25,000-50,000	42	1.04%
Graves	37,266	25,000-50,000	85	1.80%
Grayson	26,427	25,000-50,000	41	1.29%
Green	10,941	10,000-14,999	4	0.49%
Greenup	35,098	25,000-50,000	49	1.54%
Hancock	8,722	Under 10,000	6	0.92%
Hardin	110,958	Over 50,000	152	1.01%
Harlan	26,010	25,000-50,000	89	4.11%
Harrison	18,886	15,000-24,999	26	1.06%
Hart	19,035	15,000-24,999	32	1.11%
Henderson	45,210	25,000-50,000	79	1.00%
Henry	16,126	15,000-24,999	17	0.84%
Hickman	4,380	Under 10,000	5	1.52%
Hopkins	44,686	25,000-50,000	71	1.02%
Jackson	13,329	10,000-14,999	16	1.77%
Jefferson	766,757	Over 50,000	998	0.62%
Jessamine	54,115	Over 50,000	127	1.61%
Johnson	22,188	15,000-24,999	67	3.15%
Kenton	166,998	Over 50,000	444	1.51%
Knott	14,806	10,000-14,999	51	4.69%
Knox	31,145	25,000-50,000	123	3.73%
Larue	14,398	10,000-14,999	26	1.65%
Laurel	60,813	Over 50,000	170	1.85%
Lawrence	15,317	15,000-24,999	19	1.75%
Lee	7,403	Under 10,000	12	3.47%
Leslie	9,877	Under 10,000	14	5.19%
Letcher	21,553	15,000-24,999	61	3.76%
Lewis	13,275	10,000-14,999	19	2.49%
Lincoln	24,549	15,000-24,999	36	1.71%
Livingston	9,194	Under 10,000	17	1.95%
Logan	27,102	25,000-50,000	23	0.76%
Lyon	8,210	Under 10,000	25	1.89%
McCracken	65,418	Over 50,000	138	1.11%
McCreary	17,231	15,000-24,999	41	3.73%
McLean	9,207	Under 10,000	21	1.78%
Madison	92,987	Over 50,000	188	1.41%
Magoffin	12,161	10,000-14,999	41	4.94%
Marion	19,273	15,000-24,999	28	1.21%
Marshall	31,100	25,000-50,000	70	1.69%
Martin	11,195	10,000-14,999	17	3.16%

Table 17 Continued.

County	Population	Population Category	Number of Crashes	Percent of Total Crashes
Mason	17,070	15,000-24,999	51	1.76%
Meade	28,572	25,000-50,000	18	0.78%
Menifee	6,489	Under 10,000	6	1.57%
Mercer	21,933	15,000-24,999	26	1.15%
Metcalfe	10,071	10,000-14,999	15	1.18%
Monroe	10,650	10,000-14,999	13	1.85%
Montgomery	28,157	25,000-50,000	76	1.88%
Morgan	13,309	10,000-14,999	17	2.01%
Muhlenberg	30,622	25,000-50,000	76	1.79%
Nelson	46,233	25,000-50,000	53	0.93%
Nicholas	7,269	Under 10,000	18	2.43%
Ohio	23,994	15,000-24,999	56	1.69%
Oldham	66,799	Over 50,000	43	0.71%
Owen	10,901	10,000-14,999	24	2.22%
Owsley	4,415	Under 10,000	5	1.89%
Pendleton	14,590	10,000-14,999	24	1.47%
Perry	25,758	25,000-50,000	129	3.62%
Pike	57,876	Over 50,000	332	4.98%
Powell	12,359	10,000-14,999	21	1.55%
Pulaski	64,979	Over 50,000	105	1.17%
Robertson	2,108	Under 10,000	2	1.07%
Rockcastle	16,695	15,000-24,999	46	1.67%
Rowan	24,460	15,000-24,999	62	1.60%
Russell	17,923	15,000-24,999	28	1.61%
Scott	57,004	Over 50,000	73	0.88%
Shelby	49,024	25,000-50,000	80	1.18%
Simpson	18,572	15,000-24,999	29	0.97%
Spencer	19,351	15,000-24,999	25	1.79%
Taylor	25,769	25,000-50,000	29	0.81%
Todd	12,294	10,000-14,999	10	0.93%
Trigg	14,651	10,000-14,999	30	1.72%
Trimble	8,471	Under 10,000	15	1.76%
Union	14,381	10,000-14,999	14	0.93%
Warren	132,896	Over 50,000	201	0.83%
Washington	12,095	10,000-14,999	11	0.83%
Wayne	20,333	15,000-24,999	15	0.88%
Webster	12,942	10,000-14,999	19	1.53%
Whitley	36,264	25,000-50,000	114	2.19%
Wolfe	7,157	Under 10,000	13	1.73%
Woodford	26,734	25,000-50,000	38	0.85%

**Table 18: Percent of Crashes Involving Unsafe Speed
by County for All Roads (5-Year)**

County	Population	Population Category	Number of Crashes	Percent of Total Crashes
Adair	19,202	15,000-24,999	41	3.29%
Allen	21,315	15,000-24,999	81	3.60%
Anderson	22,747	15,000-24,999	109	4.33%
Ballard	7,888	Under 10,000	33	4.00%
Barren	44,249	25,000-50,000	240	3.47%
Bath	12,500	10,000-14,999	39	3.79%
Bell	26,032	25,000-50,000	140	4.51%
Boone	133,581	Over 50,000	1,381	5.54%
Bourbon	19,788	15,000-24,999	183	5.88%
Boyd	46,718	25,000-50,000	229	3.13%
Boyle	30,060	25,000-50,000	229	5.50%
Bracken	8,303	Under 10,000	99	9.91%
Breathitt	12,630	10,000-14,999	51	4.33%
Breckinridge	20,477	15,000-24,999	64	5.38%
Bullitt	81,676	Over 50,000	305	2.98%
Butler	12,879	10,000-14,999	120	9.09%
Caldwell	12,747	10,000-14,999	104	5.85%
Calloway	39,001	25,000-50,000	162	3.11%
Campbell	93,584	Over 50,000	614	3.92%
Carlisle	4,760	Under 10,000	19	6.17%
Carroll	10,631	10,000-14,999	91	4.54%
Carter	26,797	25,000-50,000	205	7.11%
Casey	16,159	15,000-24,999	12	1.26%
Christian	70,461	Over 50,000	504	5.25%
Clark	36,263	25,000-50,000	248	4.24%
Clay	19,901	15,000-24,999	78	4.62%
Clinton	10,218	10,000-14,999	26	2.46%
Crittenden	8,806	Under 10,000	55	6.06%
Cumberland	6,614	Under 10,000	7	1.25%
Daviess	101,511	Over 50,000	623	3.41%
Edmonson	12,150	10,000-14,999	73	7.89%
Elliott	7,517	Under 10,000	17	6.09%
Estill	14,106	10,000-14,999	33	4.00%
Fayette	323,152	Over 50,000	4,590	6.63%
Fleming	14,581	10,000-14,999	36	3.00%
Floyd	35,589	25,000-50,000	135	3.50%
Franklin	50,991	Over 50,000	349	4.50%
Fulton	5,969	Under 10,000	13	2.43%
Gallatin	8,869	Under 10,000	56	3.96%
Garrard	17,666	15,000-24,999	106	5.53%

Table 18 Continued.

County	Population	Population Category	Number of Crashes	Percent of Total Crashes
Grant	25,069	25,000-50,000	258	6.38%
Graves	37,266	25,000-50,000	254	5.38%
Grayson	26,427	25,000-50,000	124	3.91%
Green	10,941	10,000-14,999	26	3.16%
Greenup	35,098	25,000-50,000	76	2.38%
Hancock	8,722	Under 10,000	33	5.08%
Hardin	110,958	Over 50,000	725	4.83%
Harlan	26,010	25,000-50,000	64	2.96%
Harrison	18,886	15,000-24,999	124	5.05%
Hart	19,035	15,000-24,999	202	7.00%
Henderson	45,210	25,000-50,000	254	3.20%
Henry	16,126	15,000-24,999	115	5.67%
Hickman	4,380	Under 10,000	20	6.08%
Hopkins	44,686	25,000-50,000	325	4.66%
Jackson	13,329	10,000-14,999	42	4.65%
Jefferson	766,757	Over 50,000	5,172	3.23%
Jessamine	54,115	Over 50,000	427	5.41%
Johnson	22,188	15,000-24,999	69	3.25%
Kenton	166,998	Over 50,000	1,570	5.34%
Knott	14,806	10,000-14,999	24	2.21%
Knox	31,145	25,000-50,000	181	5.49%
Larue	14,398	10,000-14,999	113	7.19%
Laurel	60,813	Over 50,000	363	3.94%
Lawrence	15,317	15,000-24,999	29	2.67%
Lee	7,403	Under 10,000	16	4.62%
Leslie	9,877	Under 10,000	8	2.96%
Letcher	21,553	15,000-24,999	84	5.18%
Lewis	13,275	10,000-14,999	39	5.12%
Lincoln	24,549	15,000-24,999	57	2.71%
Livingston	9,194	Under 10,000	54	6.18%
Logan	27,102	25,000-50,000	142	4.71%
Lyon	8,210	Under 10,000	82	6.20%
McCracken	65,418	Over 50,000	673	5.43%
McCreary	17,231	15,000-24,999	54	4.92%
McLean	9,207	Under 10,000	68	5.75%
Madison	92,987	Over 50,000	932	7.00%
Magoffin	12,161	10,000-14,999	47	5.66%
Marion	19,273	15,000-24,999	57	2.46%
Marshall	31,100	25,000-50,000	204	4.91%
Martin	11,195	10,000-14,999	17	3.16%

Table 18 Continued.

County	Population	Population Category	Number of Crashes	Percent of Total Crashes
Mason	17,070	15,000-24,999	153	5.28%
Meade	28,572	25,000-50,000	102	4.41%
Menifee	6,489	Under 10,000	11	2.89%
Mercer	21,933	15,000-24,999	109	4.83%
Metcalfe	10,071	10,000-14,999	69	5.41%
Monroe	10,650	10,000-14,999	26	3.70%
Montgomery	28,157	25,000-50,000	158	3.90%
Morgan	13,309	10,000-14,999	41	4.84%
Muhlenberg	30,622	25,000-50,000	146	3.43%
Nelson	46,233	25,000-50,000	180	3.17%
Nicholas	7,269	Under 10,000	44	5.95%
Ohio	23,994	15,000-24,999	155	4.68%
Oldham	66,799	Over 50,000	295	4.87%
Owen	10,901	10,000-14,999	49	4.54%
Owsley	4,415	Under 10,000	15	5.68%
Pendleton	14,590	10,000-14,999	93	5.70%
Perry	25,758	25,000-50,000	71	1.99%
Pike	57,876	Over 50,000	354	5.31%
Powell	12,359	10,000-14,999	32	2.37%
Pulaski	64,979	Over 50,000	457	5.11%
Robertson	2,108	Under 10,000	13	6.95%
Rockcastle	16,695	15,000-24,999	188	6.84%
Rowan	24,460	15,000-24,999	184	4.74%
Russell	17,923	15,000-24,999	36	2.07%
Scott	57,004	Over 50,000	416	5.03%
Shelby	49,024	25,000-50,000	287	4.23%
Simpson	18,572	15,000-24,999	207	6.92%
Spencer	19,351	15,000-24,999	87	6.23%
Taylor	25,769	25,000-50,000	133	3.70%
Todd	12,294	10,000-14,999	70	6.50%
Trigg	14,651	10,000-14,999	129	7.38%
Trimble	8,471	Under 10,000	39	4.58%
Union	14,381	10,000-14,999	109	7.22%
Warren	132,896	Over 50,000	1,035	4.30%
Washington	12,095	10,000-14,999	76	5.71%
Wayne	20,333	15,000-24,999	102	6.00%
Webster	12,942	10,000-14,999	42	3.39%
Whitley	36,264	25,000-50,000	306	5.87%
Wolfe	7,157	Under 10,000	44	5.87%
Woodford	26,734	25,000-50,000	257	5.74%

**Table 19: Summary of Speeding Convictions
by County (5-Year)**

County	Number of Crashes by Year					Total Speeding Convictions (Five Years)	Annual Average Speeding Convictions Per 1,000 Licensed Drivers	Speeding Convictions Per 1,000 Licensed Drivers
	2015	2016	2017	2018	2019			
ADAIR	245	243	245	177	283	1,193	96.3	29.1
ALLEN	100	113	71	129	79	492	36.4	6.1
ANDERSON	631	507	638	366	297	2,439	145.5	22.4
BALLARD	48	36	69	43	60	256	43.6	7.8
BARREN	323	438	521	397	246	1,925	64.7	8.0
BATH	81	83	69	120	95	448	53.5	11.5
BELL	524	578	540	445	399	2,486	152.9	17.8
BOONE	1,177	1,332	1,515	1,251	882	6,157	67.1	4.5
BOURBON	384	442	319	541	461	2,147	154.4	11.7
BOYD	1,186	1,166	978	992	636	4,958	151.7	21.7
BOYLE	62	49	84	110	58	363	18.3	1.6
BRACKEN	162	305	193	310	485	1,455	235.1	14.7
BREATHITT	97	172	35	64	35	403	44.8	7.9
BRECKINRIDGE	104	97	154	68	153	576	40.9	9.0
BULLITT	596	439	639	541	885	3,100	52.9	10.2
BUTLER	84	74	42	89	140	429	48.7	3.6
CALDWELL	242	410	404	202	109	1,367	148.5	13.1
CALLOWAY	225	249	174	163	100	911	37.5	5.6
CAMPBELL	1,069	1,476	1,313	973	644	5,475	86.2	8.9
CARLISLE	49	35	18	20	25	147	39.3	7.7
CARROLL	175	209	214	171	184	953	136.4	10.5
CARTER	390	324	180	390	312	1,596	85.2	7.8
CASEY	53	49	98	34	147	381	36.1	31.8
CHRISTIAN	893	645	587	418	431	2,974	75.1	5.9
CLARK	165	116	106	168	166	721	28.5	2.9
CLAY	221	252	239	288	212	1,212	98.3	15.5
CLINTON	30	37	28	24	25	144	21.3	5.5
CRITTENDEN	59	165	87	116	66	493	81.6	9.0
CUMBERLAND	115	91	120	96	53	475	99.2	67.9
DAVISS	1,652	1,343	1,161	1,273	1,207	6,636	94.9	10.7
EDMONSON	120	71	47	21	22	281	32.0	3.8
ELLIOTT	23	18	22	22	29	114	26.2	6.7
ESTILL	34	46	38	54	104	276	27.7	8.4
FAYETTE	3,681	4,121	5,278	5,575	5,294	23,949	122.9	5.2
FLEMING	355	230	157	91	77	910	89.3	25.3
FLOYD	208	240	124	100	103	775	30.9	5.7
FRANKLIN	1,039	1,336	1,103	1,566	1,468	6,512	187.0	18.6
FULTON	143	73	59	27	13	315	79.3	24.2
GALLATIN	464	725	419	629	523	2,760	466.5	49.3
GARRARD	114	105	118	441	410	1,188	99.5	11.2

Table 19 Continued.

County	Number of Crashes by Year					Total Speeding Convictions (Five Years)	Annual Average Speeding Convictions Per 1,000 Licensed Drivers	Speeding Convictions Per 1,000 Licensed Drivers
	2015	2016	2017	2018	2019			
GRANT	337	549	495	677	407	2,465	144.2	9.6
GRAVES	401	291	333	252	289	1,566	61.2	6.2
GRAYSON	291	393	387	377	285	1,733	94.8	14.0
GREEN	44	52	34	37	17	184	23.1	7.1
GREENUP	120	98	82	125	175	600	22.6	7.9
HANCOCK	98	80	68	181	106	533	82.3	16.2
HARDIN	1,992	1,808	1,878	1,964	1,563	9,205	125.2	12.7
HARLAN	196	203	217	169	325	1,110	61.3	17.3
HARRISON	122	132	118	73	68	513	39.7	4.1
HART	98	139	129	172	204	742	61.2	3.7
HENDERSON	1,261	1,181	1,450	801	445	5,138	161.0	20.2
HENRY	752	854	637	431	421	3,095	269.9	26.9
HICKMAN	37	40	23	18	38	156	48.8	7.8
HOPKINS	782	711	722	604	742	3,561	111.0	11.0
JACKSON	12	47	88	35	88	270	30.0	6.4
JEFFERSON	4,361	4,047	3,546	4,454	3,162	19,570	38.1	3.8
JESSAMINE	642	686	808	929	605	3,670	104.7	8.6
JOHNSON	111	104	55	105	191	566	36.1	8.2
KENTON	1,476	1,194	1,074	1,595	1,353	6,692	60.2	4.3
KNOTT	50	12	5	46	20	133	13.4	5.5
KNOX	220	185	221	285	223	1,134	55.0	6.3
LARUE	147	276	270	379	310	1,382	133.5	12.2
LAUREL	747	881	711	765	748	3,852	93.5	10.6
LAWRENCE	98	112	151	270	145	776	72.9	26.8
LEE	14	12	13	13	82	134	30.4	8.4
LESLIE	35	38	18	77	68	236	31.9	29.5
LETCHER	146	62	59	91	43	401	26.3	4.8
LEWIS	76	63	60	47	27	273	29.1	7.0
LINCOLN	108	106	187	215	179	795	46.9	13.9
LIVINGSTON	165	202	196	83	100	746	106.0	13.8
LOGAN	366	321	261	233	257	1,438	76.1	10.1
LYON	283	278	258	271	176	1,266	221.7	15.4
MCCRACKEN	623	506	450	362	424	2,365	49.4	2.5
MCCREARY	120	178	159	105	90	652	63.5	13.9
MCLEAN	76	109	73	123	66	447	65.1	7.8
MADISON	860	583	1,046	1,664	1,485	5,638	97.1	27.6
MAGOFFIN	14	12	7	14	21	68	7.9	4.0
MARION	83	81	47	82	156	449	34.8	2.9
MARSHALL	414	772	461	501	270	2,418	101.0	3.6
MARTIN	10	15	12	9	4	50	7.2	0.9

Table 19 Continued.

County	Number of Crashes by Year					Total Speeding Convictions (Five Years)	Annual Average Speeding Convictions Per 1,000 Licensed Drivers	Speeding Convictions Per 1,000 Licensed Drivers
	2015	2016	2017	2018	2019			
MASON	591	440	402	227	220	1,880	156.5	27.6
MEADE	440	214	233	106	157	1,150	58.4	11.3
MENIFEE	8	9	4	9	8	38	8.3	3.5
MERCER	361	255	309	219	180	1,324	81.7	12.1
METCALFE	114	141	134	109	148	646	89.7	9.4
MONROE	13	18	30	19	13	93	12.3	3.6
MONTGOMERY	174	130	41	78	107	530	28.0	3.4
MORGAN	267	322	105	174	132	1,000	123.8	24.4
MUHLENBERG	499	260	348	253	203	1,563	71.3	10.7
NELSON	720	804	591	523	413	3,051	91.5	17.0
NICHOLAS	24	46	68	88	43	269	53.3	6.1
OHIO	554	420	446	498	281	2,199	132.1	14.2
OLDHAM	675	876	921	596	701	3,769	82.8	12.8
OWEN	197	164	72	107	60	600	77.2	12.2
OWSLEY	1	3	3	3	4	14	4.6	0.9
PENDLETON	98	106	83	132	209	628	60.2	6.8
PERRY	67	45	67	84	97	360	19.4	5.1
PIKE	121	101	123	136	139	620	15.4	1.8
POWELL	77	72	83	168	132	532	60.4	16.6
PULASKI	1,091	1,063	813	942	809	4,718	104.5	10.3
ROBERTSON	4	1	2	3	2	12	7.5	0.9
ROCKCASTLE	282	317	257	301	393	1,550	136.6	8.2
ROWAN	359	244	159	171	164	1,097	73.1	6.0
RUSSELL	65	112	83	70	120	450	35.9	12.5
SCOTT	488	515	654	351	202	2,210	59.9	5.3
SHELBY	886	848	573	555	526	3,388	110.8	11.8
SIMPSON	259	151	105	248	205	968	73.6	4.7
SPENCER	149	363	454	328	146	1,440	102.1	16.6
TAYLOR	79	69	102	92	121	463	26.4	3.5
TODD	144	199	93	123	88	647	83.7	9.2
TRIGG	263	215	221	177	97	973	96.7	7.5
TRIMBLE	56	92	45	36	39	268	42.6	6.9
UNION	134	62	129	134	75	534	52.9	4.9
WARREN	1,572	1,556	1,342	1,219	824	6,513	82.8	6.3
WASHINGTON	89	50	55	42	131	367	44.0	4.8
WAYNE	55	103	136	145	139	578	43.3	5.7
WEBSTER	139	151	58	39	43	430	46.9	10.2
WHITLEY	120	290	262	158	112	942	40.3	3.1
WOLFE	376	310	388	398	273	1,745	366.5	39.7
WOODFORD	883	698	1,184	932	594	4,291	225.8	16.7
TOTAL	47,605	47,688	46,193	47,132	40,646	229,264	80.5	7.4

**Table 20: Speeding Conviction Rates
In Decreasing Order by County (5-Year)**

County	Population	Population Category	Annual Average Speeding Convictions Per 1,000 Licensed Drivers	Speeding Convictions Per Speed-Related Crash
Jefferson	766,757	Over 50,000	7.6	3.8
Fayette	323,152	Over 50,000	24.6	5.2
Kenton	166,998	Over 50,000	12.0	4.3
Boone	133,581	Over 50,000	13.4	4.5
Warren	132,896	Over 50,000	16.6	6.3
Hardin	110,958	Over 50,000	25.0	12.7
Daviess	101,511	Over 50,000	19.0	10.7
Campbell	93,584	Over 50,000	17.2	8.9
Madison	92,987	Over 50,000	19.4	27.6
Bullitt	81,676	Over 50,000	10.6	10.2
Christian	70,461	Over 50,000	15.0	5.9
Oldham	66,799	Over 50,000	16.6	12.8
McCracken	65,418	Over 50,000	9.9	2.5
Pulaski	64,979	Over 50,000	20.9	10.3
Laurel	60,813	Over 50,000	18.7	10.6
Pike	57,876	Over 50,000	3.1	1.8
Scott	57,004	Over 50,000	12.0	5.3
Jessamine	54,115	Over 50,000	20.9	8.6
Franklin	50,991	Over 50,000	37.4	18.6
Shelby	49,024	25,000-50,000	22.2	11.8
Boyd	46,718	25,000-50,000	30.3	21.7
Nelson	46,233	25,000-50,000	18.3	17.0
Henderson	45,210	25,000-50,000	32.2	20.2
Hopkins	44,686	25,000-50,000	22.2	11.0
Barren	44,249	25,000-50,000	12.9	8.0
Calloway	39,001	25,000-50,000	7.5	5.6
Graves	37,266	25,000-50,000	12.2	6.2
Whitley	36,264	25,000-50,000	8.1	3.1
Clark	36,263	25,000-50,000	5.7	2.9
Floyd	35,589	25,000-50,000	6.2	5.7
Greenup	35,098	25,000-50,000	4.5	7.9
Knox	31,145	25,000-50,000	11.0	6.3
Marshall	31,100	25,000-50,000	20.2	3.6
Muhlenberg	30,622	25,000-50,000	14.3	10.7
Boyle	30,060	25,000-50,000	3.7	1.6
Meade	28,572	25,000-50,000	11.7	11.3
Montgomery	28,157	25,000-50,000	5.6	3.4
Logan	27,102	25,000-50,000	15.2	10.1
Carter	26,797	25,000-50,000	17.0	7.8
Woodford	26,734	25,000-50,000	45.2	16.7

Table 20 Continued.

County	Population	Population Category	Annual Average Speeding Convictions Per 1,000 Licensed Drivers	Speeding Convictions Per Speed-Related Crash
Grayson	26,427	25,000-50,000	19.0	14.0
Bell	26,032	25,000-50,000	30.6	17.8
Harlan	26,010	25,000-50,000	12.3	17.3
Taylor	25,769	25,000-50,000	5.3	3.5
Perry	25,758	25,000-50,000	3.9	5.1
Grant	25,069	25,000-50,000	28.8	9.6
Lincoln	24,549	15,000-24,999	9.4	13.9
Rowan	24,460	15,000-24,999	14.6	6.0
Ohio	23,994	15,000-24,999	26.4	14.2
Anderson	22,747	15,000-24,999	29.1	22.4
Johnson	22,188	15,000-24,999	7.2	8.2
Mercer	21,933	15,000-24,999	16.3	12.1
Letcher	21,553	15,000-24,999	5.3	4.8
Allen	21,315	15,000-24,999	7.3	6.1
Breckinridge	20,477	15,000-24,999	8.2	9.0
Wayne	20,333	15,000-24,999	8.7	5.7
Clay	19,901	15,000-24,999	19.7	15.5
Bourbon	19,788	15,000-24,999	30.9	11.7
Spencer	19,351	15,000-24,999	20.4	16.6
Marion	19,273	15,000-24,999	7.0	2.9
Adair	19,202	15,000-24,999	19.3	29.1
Hart	19,035	15,000-24,999	12.2	3.7
Harrison	18,886	15,000-24,999	7.9	4.1
Simpson	18,572	15,000-24,999	14.7	4.7
Russell	17,923	15,000-24,999	7.2	12.5
Garrard	17,666	15,000-24,999	19.9	11.2
McCreary	17,231	15,000-24,999	12.7	13.9
Mason	17,070	15,000-24,999	31.3	27.6
Rockcastle	16,695	15,000-24,999	27.3	8.2
Casey	16,159	15,000-24,999	7.2	31.8
Henry	16,126	15,000-24,999	54.0	26.9
Lawrence	15,317	15,000-24,999	14.6	26.8
Knott	14,806	10,000-14,999	2.7	5.5
Trigg	14,651	10,000-14,999	19.3	7.5
Pendleton	14,590	10,000-14,999	12.0	6.8
Fleming	14,581	10,000-14,999	17.9	25.3
Larue	14,398	10,000-14,999	26.7	12.2
Union	14,381	10,000-14,999	10.6	4.9
Estill	14,106	10,000-14,999	5.5	8.4
Jackson	13,329	10,000-14,999	6.0	6.4

Table 20 Continued.

County	Population	Population Category	Annual Average Speeding Convictions Per 1,000 Licensed Drivers	Speeding Convictions Per Speed-Related Crash
Morgan	13,309	10,000-14,999	24.8	24.4
Lewis	13,275	10,000-14,999	5.8	7.0
Webster	12,942	10,000-14,999	9.4	10.2
Butler	12,879	10,000-14,999	9.7	3.6
Caldwell	12,747	10,000-14,999	29.7	13.1
Breathitt	12,630	10,000-14,999	9.0	7.9
Bath	12,500	10,000-14,999	10.7	11.5
Powell	12,359	10,000-14,999	12.1	16.6
Todd	12,294	10,000-14,999	16.7	9.2
Magoffin	12,161	10,000-14,999	1.6	4.0
Edmonson	12,150	10,000-14,999	6.4	3.8
Washington	12,095	10,000-14,999	8.8	4.8
Martin	11,195	10,000-14,999	1.4	0.9
Green	10,941	10,000-14,999	4.6	7.1
Owen	10,901	10,000-14,999	15.4	12.2
Monroe	10,650	10,000-14,999	2.5	3.6
Carroll	10,631	10,000-14,999	27.3	10.5
Clinton	10,218	10,000-14,999	4.3	5.5
Metcalfe	10,071	10,000-14,999	17.9	9.4
Leslie	9,877	Under 10,000	6.4	29.5
McLean	9,207	Under 10,000	13.0	7.8
Livingston	9,194	Under 10,000	21.2	13.8
Gallatin	8,869	Under 10,000	93.3	49.3
Crittenden	8,806	Under 10,000	16.3	9.0
Hancock	8,722	Under 10,000	16.5	16.2
Trimble	8,471	Under 10,000	8.5	6.9
Bracken	8,303	Under 10,000	47.0	14.7
Lyon	8,210	Under 10,000	44.3	15.4
Ballard	7,888	Under 10,000	8.7	7.8
Elliott	7,517	Under 10,000	5.2	6.7
Lee	7,403	Under 10,000	6.1	8.4
Nicholas	7,269	Under 10,000	10.7	6.1
Wolfe	7,157	Under 10,000	73.3	39.7
Cumberland	6,614	Under 10,000	19.8	67.9
Menifee	6,489	Under 10,000	1.7	3.5
Fulton	5,969	Under 10,000	15.9	24.2
Carlisle	4,760	Under 10,000	7.9	7.7
Owsley	4,415	Under 10,000	0.9	0.9
Hickman	4,380	Under 10,000	9.8	7.8
Robertson	2,108	Under 10,000	1.5	0.9

Table 21: Crash Trend Analysis

Crash Statistic	2015	2016	2017	2018	4 Year Average	2019	Percentage Change to Average
Total Crashes	136,338	140,546	136,979	134,285	137,037	132,376	-3.5
Fatal Crashes	694	763	721	664	711	668	-6.4
Fatalities	761	834	782	724	775	733	-5.8
Injury Crashes	23,803	25,003	23,961	22,846	23,903	22,387	-6.8
Injuries	35,542	37,346	35,999	33,914	35,700	32,871	-8.6
Fatal & Injury Crashes	24,497	25,766	24,682	23,510	24,614	23,055	-6.8
Licensed Drivers (Millions)	3.20	3.20	3.20	3.29	3.22	3.20	-0.7
Registered Vehicles (Millions)	3.86	3.89	3.89	4.01	3.91	4.01	2.5
Total Vehicle Miles (Billions)	41.44	42.58	43.14	43.81	42.74	43.81	2.5
Total Crash/100 MVM	255	259	252	246	253	243	-4.1
Fatal Crash/100 MVM	1.5	1.62	1.47	1.37	1.49	1.37	-8.8
Fatalities/100 MVM	1.65	1.78	1.61	1.49	1.63	1.51	-8.1
Injuries/100 MVM	73	76	72	68	72	66	-9.5
Speed Related Crashes	6,694	6,661	6,077	6,242	6,419	5,274	-21.7
Speed Related Injury Crashes	1,813	1,912	1,666	1,649	1,760	1,422	-23.8
Speed Related Fatal Crashes	124	110	117	93	111	102	-8.8
Speed Convictions	47,605	47,688	47,688	47,890	47,718	40,646	-14.8
Alcohol Related Crashes	4,217	4,192	3,901	3,580	3,973	3,494	-13.7
Alcohol Related Injury Crashes	1,418	1,363	1,263	1,137	1,295	1,095	-18.3
Alcohol Related Fatal Crashes	110	109	107	71	99	80	-24.1
Alcohol Related Fatalities	118	117	120	74	107	96	-11.7
DUI Cases Filed	26,008	25,048	25,048	22,432	24,634	22,606	-8.2
DUI Filed and Convicted Within Same Year	14,443	13,642	13,642	11,962	13,422	11,472	-14.5
DUI Cases Filed & Disposed w/o Conviction	2,354	3,251	3,450	3,165	3,055	3,478	13.8
DUI Conviction Rate (Percent)**	83.7	80.8	80.8	79.1	81.1	76.7	-5.4
Drug Related Crashes	1,639	3	1,844	1,488	1,686	1,532	-10
Drug Related Injury Crashes	678	698	750	585	678	562	-20.6
Drug Related Fatal Crashes	34	52	54	53	48	52	7.2
Pedestrian Related Crashes	1,097	1,092	1,094	1,009	1,073	1,020	-5.2
Pedestrian Related Injury Crashes	858	817	808	757	810	771	-5.1
Pedestrian Related Fatal Crashes	68	83	84	77	78	75	-4
Bicycle Related Crashes	406	411	404	340	390	343	-13.8
Bicycle Related Injury Crashes	277	256	266	233	258	217	-18.9
Bicycle Related Fatal Crashes	7	9	7	10	8	5	-65
Motorcycle Related Crashes	1,727	1,785	1,624	1,464	1,650	1,427	-15.6
Motorcycle Related Injury Crashes	1,070	1,144	975	933	1,031	919	-12.1
Motorcycle Related Fatal Crashes	86	105	86	84	90	82	-10.1
School Bus Related Crashes	852	750	570	461	658	387	-70.1
School Bus Related Injury Crashes	103	85	60	50	75	39	-91
School Bus Related Fatal Crashes	3	3	-	1	2	1	-75
Truck Related Crashes	9,196	9,381	9,137	9,898	9,403	9,821	4.3
Truck Related Injury Crashes	1,396	1,352	1,323	1,411	1,371	1,319	-3.9
Truck Related Fatal Crashes	90	93	75	94	88	98	10.2
Train Related Crashes	51	43	45	40	45	32	-39.8
Train Related Injury Crashes	17	13	18	10	15	8	-81.3
Train Related Fatal Crashes	3	2	3	2	3	3	16.7

**Table 22: Crashes Involving Vehicle Defects
Before and After Repeal of Vehicle Inspection Law**

Time Period	Number of Crashes Involving Vehicle Defects	Percent of All Crashes Involving Vehicle Defects
October 1976-May 1978 <i>(20 months before repeal of law)</i>	14,440	5.86
June 1978 - December 1979 <i>(19 months after repeal of law)</i>	16,527	7.09
1980-1984	46,397	7.43
1985-1989	46,552	6.64
1990-1994	40,393	6.09
1995-1999	33,655	5.27
2000	7,834	4.98
2001	7,325	4.79
2002	7,338	4.77
2003	6,882	4.47
2004	6,811	4.33
2005	7,050	4.61
2006	6,656	4.36
2007	6,671	4.37
2008	6,106	4.21
2009	6,269	4.24
2010	6,246	4.15
2011	7,886	5.25
2012	8,030	6.43
2013	7,623	6.18
2014	7,831	5.18
2015	8,452	5.24
2016	8,337	5.04
2017	7,781	4.81
2018	7,289	4.61
2019	7,057	4.5

**Table 23: Statewide Crash Rates
By Functional Class (5-Year)**

Highways are grouped into various system classifications. Three common types of groupings include:

- 1) Functional classification
- 2) Federal-aid system
- 3) Administrative classification

Statewide crash rates were determined for each of those groupings. The following is a summary of the findings.

Average statewide rates by functional classification are listed in Table A-1. Highways are grouped into a rural or urban category and then into systems such as arterial, collector, and local. Rates are determined considering all crashes, injury crashes only, and fatal crashes only.

The highest overall crash rates are for urban minor arterials followed by urban principal arterials (non-interstate or freeway). The lowest overall rates are for rural principal arterials (interstate) followed by other rural principal arterials and urban principal arterials (interstate and other freeway). Injury crash rates for the various categories are ordered similar to overall crash rates. However, the ordering for the fatal crash rates is very different. The highest fatal crash rates are for rural collectors and rural local roadways. Urban principal arterials (interstate and other freeway) have the lowest fatal crash rate with several other urban classifications, as well as rural interstates.

STATEWIDE CRASH RATES BY FUNCTIONAL CLASSIFICATION				Crash Rates (Crashes per 100 MVM)		
Location	Functional Classification	Average Total Mileage	Average AADT	Crash Rate	Injury Rate	Fatal Rate
Rural	Interstate	750	29,264	60	9	0.5
	Principal Arterial	1,726	7,990	94	21	1.5
	Minor Arterial	2,332	4,050	175	41	2.2
	Major Collector	5,811	1,819	239	61	3.3
	Minor Collector	9,315	618	279	69	3.2
	Local System	5,185	308	254	60	2.8
Urban	Interstate	389	48,310	131	19	0.4
	Freeways & Expressways	95	24,216	125	21	0.6
	Principal Arterial	639	18,799	525	90	1.8
	Minor Arterial	1,359	10,654	556	95	1.5
	Collector	1,547	4,055	497	83	1.3
	Local System	237	1,312	447	70	2.3

**Table 24: Percent of All Crashes
(5-Year)**

Location	Highway Type	% Wet	%Snow or Ice	% Darkness
RURAL	ONE-LANE	19.4	1.6	12.4
	TWO- LANE	24.5	4.1	29.6
	THREE-LANE	21.6	1.7	25
	FOUR-LANE DIVIDED	19.5	3.9	33.7
	FOUR-LANE UNDIVIDED	19.2	2.4	24.7
	INTERSTATE	29.1	7.6	33.1
	PARKWAY	24	7.4	39.2
	ALL	24.8	4.7	30.6
URBAN	ONE-LANE	22.9	2.1	18.7
	TWO- LANE	21.6	2.3	20.9
	THREE-LANE	19.2	1.5	21.1
	FOUR-LANE DIVIDED	20.9	2	21.5
	FOUR-LANE UNDIVIDED	19.2	1.2	20.1
	INTERSTATE	21.8	3.4	23.1
	PARKWAY	23.2	5.2	28.8
	ALL	20.9	2.1	21.2



Figures

Figure 1 - Trends in Crash Rates for Identified Roads
(Crashes / 100 MVM)

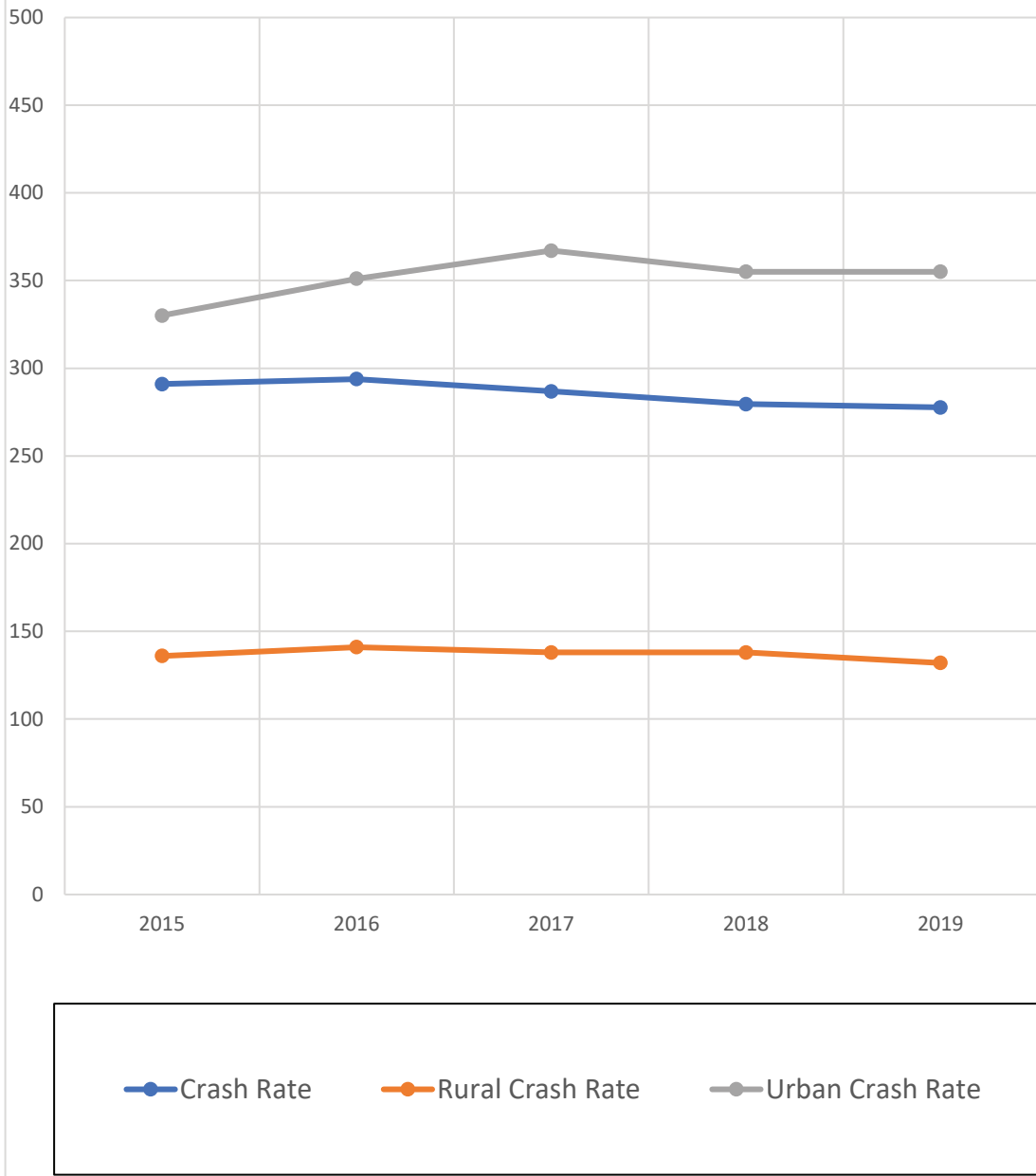


Figure 2 - Trends in Rural Crash Rates for Identified Roads
(Crashes / 100 MVM)

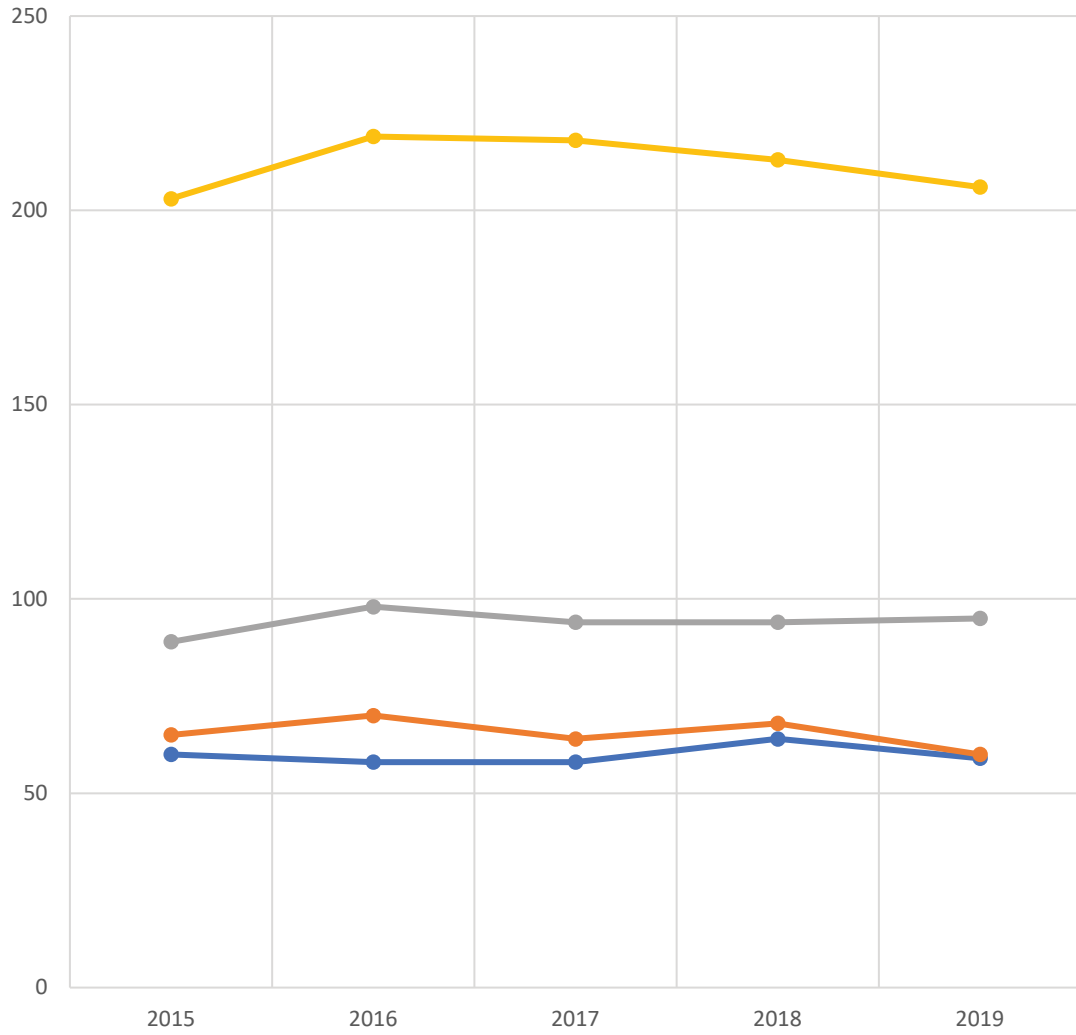


Figure 3 - Trends in Urban Crash Rates for Identified Roads (Crashes / 100 MVM)

