



Perez-Perri, J. I., Noerenberg, M. , Kamel, W., Lenz, C. E., Mohammed, S., Hentze, M. W. and Castello, A. (2021) Global analysis of RNA-binding protein dynamics by comparative and enhanced RNA interactome capture. *Nature Protocols*, 16, pp. 27-60. (doi: [10.1038/s41596-020-00404-1](https://doi.org/10.1038/s41596-020-00404-1))

The material cannot be used for any other purpose without further permission of the publisher and is for private use only.

There may be differences between this version and the published version. You are advised to consult the publisher's version if you wish to cite from it.

<http://eprints.gla.ac.uk/226456/>

Deposited on 09 November 2020

Enlighten – Research publications by members of the University of  
Glasgow

<http://eprints.gla.ac.uk>

1 **Global analysis of RNA-binding protein dynamics by comparative and**  
2 **enhanced RNA interactome capture**

3 Joel I. Perez-Perri<sup>1\*</sup>, Marko Noerenberg<sup>2\*</sup>, Wael Kamel<sup>2</sup>, Caroline E. Lenz<sup>2</sup>  
4 Shabaz Mohammed<sup>2</sup>, Matthias W. Hentze<sup>1,3,5</sup> and Alfredo Castello<sup>2,4,5</sup>

5

6 <sup>1</sup> European Molecular Biology Laboratory (EMBL), Meyerhofstrasse 1, 69117,  
7 Heidelberg, Germany

8 <sup>2</sup> Department of Biochemistry, University of Oxford, OX1 3QU Oxford, UK

9 <sup>3</sup> Molecular Medicine Partnership Unit (MMPU), Im Neuenheimer Feld 350,  
10 69120, Heidelberg, Germany.

11 <sup>4</sup> MRC-University of Glasgow Centre for Virus Research, University of  
12 Glasgow, 464 Bearsden Road, Glasgow G61 1QH, Scotland (UK).

13 <sup>5</sup> correspondence: [alfredo.castello@glasgow.ac.uk](mailto:alfredo.castello@glasgow.ac.uk) and [hentze@embl.org](mailto:hentze@embl.org)

14 \* These authors contributed equally.

15

16 **EDITORIAL SUMMARY** This protocol extension describes an improved method  
17 for global profiling of poly(A) RNA-binding proteins (RBPs) and quantitative  
18 analysis of RBP dynamics in response to biological and pharmacological cues  
19 using UV crosslinking, capture with LNA-modified oligo-dT probes, and  
20 proteomics.

20

21

22 **TWEET** Protocol extension describing an improved procedure for quantitative  
23 assessment of RNA-binding protein (RBP) dynamics in response to biological  
24 and pharmacological cues. @Castello\_lab; @HentzeTeam; @Alf\_Castello;  
#RNA; #RNA-binding\_proteins; #interactomics.

25

1 **COVER TEASER** Enhanced RNA-interactome capture

2  
3 **Related links**

4 **Key reference(s) using this protocol**

5 Perez-Perri, J. et al. Nat Commun 9, 4408 (2018):

6 <https://doi.org/10.1038/s41467-018-06557-8>

7 Garcia-Moreno, M. et al. Mol Cell 74, 196-211.e11 (2019):

8 <https://doi.org/10.1016/j.molcel.2019.01.017>

9 Sysoev, V. et al. Nat Commun 7, 12128 (2016):

10 <https://doi.org/10.1038/ncomms12128>

11 Castello, A. et al. Cell 149, 1393-406 (2012):

12 <https://doi.org/10.1016/j.cell.2012.04.031>

13 **Key data used in this protocol**

14 Garcia-Moreno, M. et al. Mol Cell 74, 196-211.e11 (2019):

15 <https://doi.org/10.1016/j.molcel.2019.01.017>

16 This protocol is an extension to: *Nat. Protoc.*

17 <https://doi.org/10.1038/nprot.2013.020>

18  
19 **ABSTRACT**

20 Interactions between RNA-binding proteins (RBPs) and RNAs are critical for  
21 cell biology. However, methods to comprehensively and quantitatively assess  
22 these interactions within cells were lacking. RNA interactome capture (RIC)  
23 employs in vivo UV-crosslinking, oligo(dT) capture and proteomics to identify  
24 RNA-binding proteomes. Recent advances have empowered RIC to quantify  
25 RBP responses to biological cues such as metabolic imbalance or virus

1 infection. Enhanced (e)RIC exploits the stronger binding of locked nucleic acid  
2 (LNA)-containing oligo(dT) probes to poly(A) tails to maximize RNA capture  
3 selectivity and efficiency, profoundly improving signal-to-noise ratios. The  
4 subsequent analytical use of SILAC and TMT proteomic approaches, together  
5 with high-sensitivity sample preparation and tailored statistical data analysis,  
6 significantly improves RIC's quantitative accuracy and reproducibility. This  
7 optimized approach is an extension of the original RIC protocol. It takes three  
8 days plus two weeks for proteomics and data analysis, and will enable the study  
9 of RBP dynamics under different physiological and pathological conditions.

10

## 11 **INTRODUCTION**

### 12 **Development of the protocol**

13 RIC employs irradiation of cultured cells with UV light to trigger crosslinks  
14 between protein and RNA interacting at 'zero distance'. This is followed by cell  
15 lysis under denaturing conditions, specific isolation of polyadenylated (poly(A))  
16 RNA and its covalently linked proteins using oligo(dT) magnetic beads and  
17 stringent washes and proteomic analysis<sup>1-3</sup> (Fig.1). While effective to identify  
18 RBPs in multiple cell types<sup>1,2,4-7</sup> and organisms<sup>8-13</sup>, RIC is not readily applicable  
19 to comparative analyses aiming to assess the responses of RBPs to  
20 physiological and pathological cues. In particular, the original protocol requires  
21 a substantial amount of starting material and lacks a specialized proteomics  
22 approach and tailored data analysis<sup>3</sup>. In the last years, several key  
23 improvements have empowered RIC to perform comparative analysis  
24 efficiently<sup>14,15</sup>. One of these key advances is the use of an oligo (dT) probe that  
25 contains locked nucleic acids (LNAs)<sup>14</sup>. LNAs are nucleic acid analogues that

1 bear a methylene bridge between the 2'-O and 4'-C atoms of the ribose ring.  
2 This modification "locks" oligonucleotides in the optimal conformation for base  
3 pairing with complementary strands, leading to a profound increase in the  
4 thermal stability of the nucleic acid duplex. By adding LNAs to the probe, it is  
5 possible to increase the stringency of the capture and washes, which  
6 profoundly depletes the sample of abundant non-poly(A) nucleic acids, such as  
7 rRNAs, as well as potential DNA contamination<sup>14,16</sup>. We describe here this  
8 improved variant of RIC that we refer to as enhanced RNA interactome capture  
9 (eRIC).

10 To increase the quantitative power of RIC, we have successfully applied two  
11 different proteomic strategies that have already shown their efficacy in proof-  
12 of-principle experiments<sup>14,15</sup>. The first approach exploits the capacity of stable  
13 isotope labelling with amino acids in cell culture (SILAC) to reduce technical  
14 noise by combining the samples after cell lysis (Fig.2). By mixing the lysates  
15 before the oligo(dT) capture, the isolation of poly(A) RNA and the downstream  
16 sample preparation for mass spectrometry becomes equally efficient for all the  
17 samples<sup>15</sup>. This, together with the high quantitative power of SILAC<sup>17</sup>, allows  
18 the discovery of even subtle changes in RBP activity<sup>15</sup>. SILAC allows to  
19 parallelize the analysis of up to three samples simultaneously, reducing mass  
20 spectrometry run time and improving cross-comparison accuracy when  
21 compared to label-free applications. While SILAC has been used in a broad  
22 range of cell lines and model systems, it cannot be easily applied to  
23 multicellular organisms or to cell types that do not tolerate SILAC reagents or  
24 that can only be cultured for a limited time. In such scenarios, it is  
25 recommended to employ post-elution peptide labelling techniques, such as

1 isobaric labeling with tandem mass tag (TMT) (Fig.2). TMT labelling has been  
2 successfully used in RIC experiments applied to cultured cells and fruit fly  
3 embryos<sup>10,14</sup>, and can virtually be extended to any biological system. Isobaric  
4 labelling reagents allow higher level multiplexing with TMT enabling the  
5 analysis of up to sixteen samples in one mass spectrometry run. However, the  
6 RIC protocol is performed separately for each sample (Fig.2), potentially  
7 increasing technical noise. It is also recommended to perform sample  
8 fractionation and increase mass spectrometry analysis time to offset the  
9 reduction of protein identification rate and maximize proteome coverage.

10 The original RIC protocol<sup>3</sup> required a substantial amount of starting material,  
11 which is not feasible to obtain in many biological models. To reduce the amount  
12 of input material, we have combined eRIC with a recently-developed sample  
13 preparation approach, called 'Single-pot solid-phase-enhanced sample  
14 preparation' (SP3), that minimizes peptide loss<sup>18,19</sup>. As a reference, the eRIC  
15 workflow combined with SP3 reduces the amount of starting material by ~10  
16 fold, broadening its applicability.

17 Moreover, the computational workflow used in the past was conceived to  
18 compare a UV-irradiated sample versus a non-irradiated control. This  
19 comparison yields relatively high fold changes, because the control is largely  
20 devoid of proteins. By contrast, the amplitude of the changes in comparisons  
21 of two UV-crosslinked samples that have been subjected to different treatments  
22 (e.g. uninfected versus infected cells) is expected to be lower, requiring high  
23 replicability to gain statistical power. We have implemented an analytical  
24 workflow that compiles the ratios between conditions, applies batch effect  
25 correction, and uses moderated statistical analysis adjusted for false discovery

1 rate. In addition, our approach employs a complementary semiquantitative  
2 analysis to allow the study of proteins with 'zero intensity' values in one or more  
3 conditions. These results are problematic, as 'zero' values generate 'zero' or  
4 'infinite' ratios that cannot be, in principle, analyzed statistically<sup>10,14,15</sup>. This  
5 complementary semiquantitative analysis is important because it allows to  
6 study RBPs that switch from a dormant to an active RNA-binding state (off/on)  
7 and vice versa (on/off) . The importance of RBPs with these extreme behaviors  
8 is illustrated by IFI16 and IFIT5, whose RNA-binding activities are triggered  
9 upon Sindbis virus infection and are indeed critical antiviral host factors<sup>15</sup>.

10

### 11 **Applications and target audience**

12 Here, we describe a modified RIC protocol that is specifically designed to study  
13 RBP dynamics on a proteome-wide scale. Comparative RIC studies have  
14 recently been applied to profile RBP dynamics during embryo development<sup>10</sup>,  
15 virus infection<sup>15</sup> and acute inhibition of alpha-ketoglutarate dependent  
16 dioxygenases<sup>14</sup>, revealing key regulators of these processes. Comparative RIC  
17 analyses have broad applications to understand how RBPs regulate RNA  
18 metabolism in response to developmental, physiological or environmental  
19 cues, including cell division, differentiation, reprogramming or stress. Given the  
20 importance of RBPs in disease<sup>20-23</sup>, this method can also be used to elucidate  
21 pathological mechanisms associated with e.g. infection, malignant  
22 transformation or metabolic disorders, as well as the modes of action of small  
23 molecules. Importantly, recent work has shown that RNA can regulate protein  
24 function in response to biological cues, a phenomenon that is referred to here  
25 as 'riboregulation'<sup>24-27</sup>. Comparative RIC analyses have great potential to

1 identify examples of 'riboregulation'<sup>26</sup> in a proteome-wide manner. Given that  
2 the roles of cellular RNA and RBPs have been greatly expanded<sup>24-26,28-30</sup>, we  
3 foresee an extensive use of comparative RIC analysis not only by RNA  
4 biologists, but also by experts in other disciplines such as cell signaling,  
5 molecular medicine, development, immunology and virology.

6

### 7 **Advantages of (e)RIC and comparison to other methods**

8 eRIC approach described here shares the same advantages with its  
9 predecessor<sup>3</sup>, while adding specific features to efficiently study RBPome  
10 dynamics: (1) The improved workflow substantially reduces the required starting  
11 material, making it applicable to a broader range of biological systems; (2) UV  
12 light promotes RNA-to-protein crosslinks at 'zero' distances and does not induce  
13 detectable protein-protein crosslinks with the UV irradiation regime described  
14 here<sup>2,3,31,32</sup>; (3) UV irradiation is applied to living cells, thus providing information  
15 on native protein-RNA interactions and their dynamics; (4) The use of an  
16 oligo(dT) probe enriches for mRNAs and polyadenylated non-coding RNAs,  
17 reducing abundant non-polyadenylated RNAs, (e.g. rRNA and snRNA) and their  
18 associated proteins<sup>2,14</sup>. By depleting these dominant (e.g. ribosome-associated)  
19 proteins, RIC allows the detection of medium and low abundant RBPs bound to  
20 poly(A) RNA. The use of LNAs in the oligo(dT) probe strongly enhances  
21 selectivity<sup>14,16,33</sup>. (5) DNA is virtually undetectable in eluates of eRIC, even for cell  
22 types and experimental settings (e.g. nuclear fractionation) where DNA  
23 contamination was found to be problematic. (6) Incorporation of proteomic  
24 labelling strategies reduces the technical noise, improves quantification accuracy  
25 and reproducibility, while reducing mass spectrometry time. (7) We used a



1 customized data analysis pipeline that allows the identification of subtle  
2 differences in RNA binding as well as a complementary semiquantitative  
3 approach to deal with 'zero' values and investigate 'on/off' and 'off/on' RBP  
4 states<sup>14,15</sup>. (8) Importantly, RIC has successfully been applied to many organisms  
5 and cell lines<sup>1,2,4-13,25,34-36</sup>, thus offering solid foundations for adaptation to virtually  
6 every eukaryotic system.

7 The original RIC protocol and its enhanced variant (i.e. eRIC) are based on the  
8 hybridization of an oligo(dT) probe with poly(A) tails and, thus, can only identify  
9 proteins interacting with poly(A) RNA. Recently, other RBP identification methods  
10 that also capture non-polyadenylated RNAs have been described<sup>37-43</sup>. Two  
11 approaches employed labelling of nascent RNA transcripts in cells with 5-  
12 ethynyluridine (5-EU) and were referred to as RNA Interactome using Click  
13 Chemistry (RICK)<sup>37</sup> and Click Chemistry-Assisted RNA Interactome Capture  
14 (CARIC)<sup>38</sup>. After UV-mediated crosslinking, cells are lysed, EU residues  
15 biotinylated via click chemistry and RNA-proteins conjugates purified with  
16 streptavidin-coated beads. While successful at identifying RBPs, these methods  
17 present some limitations such as the need of nucleotide incorporation, which is  
18 not readily applicable to all samples (e.g. organisms), can introduce biases  
19 towards highly transcribed genes and can be toxic<sup>44</sup>.

20 2C<sup>39</sup> and TRAPP<sup>40</sup> build on the realization that silica-based matrixes do not only  
21 bind free RNA but also RNA with proteins covalently linked to it. After UV  
22 crosslinking, cells are lysed under strong denaturing conditions and RBPs  
23 purified using silica columns or beads. Although simple and potent, these  
24 approaches demand special considerations to avoid contamination with DNA-  
25 interacting proteins, as silica matrices can bind both RNA and DNA<sup>40</sup>. Of note,

1 eRIC was shown to almost completely prevent genomic (g)DNA contamination  
2 even in challenging systems exhibiting large gDNA/poly(A) RNA ratios, such as  
3 small cells (e.g. T lymphocytes)<sup>14</sup> and isolated nuclei<sup>33</sup>.

4 Global purification of RBPs was also achieved based on the physicochemical  
5 properties of covalent RNA-protein conjugates<sup>41-43</sup>. Acid guanidinium  
6 thiocyanate-phenol-chloroform extraction (“Trizol”) involves the generation of two  
7 phases, with RNA and proteins specifically locating to the aqueous and organic  
8 phase, respectively. XRNAX<sup>41</sup> and OOPS<sup>42</sup> purify RBPs with Trizol, exploiting the  
9 property of UV-crosslinked RNA-protein conjugates to migrate to the aqueous-  
10 organic interphase. PTex<sup>43</sup> is based on the same rationale, but in this case a  
11 neutral phenol-toluol extraction is used to remove DNA and membrane  
12 contaminants, followed by an acid-phenol extraction.

13 The main advantage of all the methods based on total RNA purification is that  
14 they can be used to study RBPs that interact with non-poly(A) RNA (see below).  
15 However, as more than 90% of cellular RNA is composed of rRNA and tRNA,  
16 these methods are expected to be biased towards these highly abundant RNA  
17 biotypes. mRNA represents only a small fraction of total cellular RNA (~3%) and  
18 enrichment of poly(A) RNA with RIC/eRIC have been shown to be instrumental  
19 for a comprehensive characterization of poly(A) RNA-bound proteomes. Indeed,  
20 RBPomes generated with methods based on total RNA purification lack a  
21 significant fraction of RBPs identified by RIC/eRIC in identical systems<sup>37,38,40-43</sup>.  
22 These non-overlapping RBPs may interact exclusively or dominantly with poly(A)  
23 RNA.

24

25 **Limitations of the approach**

1 This protocol will not be suitable to study dynamics of RBPs that (i) shift in RNA  
2 preference but not in overall RNA binding; (ii) are not expressed or active in the  
3 experimental settings tested; (iii) bind exclusively non-polyadenylated RNA (e.g.  
4 prokaryotic RNA); (iv) exhibit a protein-RNA interface that is suboptimal for UV  
5 crosslinking (e.g. interaction only with the phosphate-ribose backbone); and (v)  
6 do not yield mass spectrometry compatible peptides. (vi) The efficacy of this  
7 protocol will also be compromised if the input material is extremely limited (we  
8 typically aim for 5-10 x10<sup>7</sup> cells) or if UV cannot penetrate the sample efficiently  
9 (e.g. thick tissue samples).

10 As described above, RIC/eRIC are biased towards poly(A) RNA and cannot be  
11 used to study non-polyadenylated RNAs. Therefore, XRNAX<sup>41</sup>, OOPS<sup>42</sup>, PTex<sup>43</sup>,  
12 2C<sup>39</sup> and TRAPP<sup>40</sup> are especially useful when focusing on other (or all) classes  
13 of cellular RNAs including rRNA, snoRNA, snRNA and pre-mRNA. Indeed, these  
14 methods will be the best option to study bacterial systems where RNA (including  
15 mRNA) is not polyadenylated. In eukaryotic systems poly(A) RNA is a small  
16 fraction of the total RNA and, hence, the amount of starting material required to  
17 perform RIC/eRIC is substantially higher than that for total RNA purification  
18 approaches. Therefore, if the starting material is extremely limited, total RNA  
19 based methods will have higher chances to succeed at identifying RBPs.  
20 However, it is important to consider the substantial contribution of non-poly(A)  
21 RNA to the proteomic data. In summary, selection of the approach will depend  
22 on the specific aim of the project. RIC/eRIC will be the method of choice to study  
23 mRNA regulatory processes, while total RNA-based methods will be more  
24 appropriate when studying non-poly(A) RNA. Also, the availability of input  
25 material will be an important factor to decide between RIC/eRIC and total RNA-

1 based methods. In any case, we consider that both approaches are  
2 complementary and can be used in conjunction to generate a complete picture of  
3 the cellular RBPome.

#### 4 **Experimental design**

##### 5 **Controls**

6 To identify contaminant proteins that may be present in the sample in a UV-  
7 independent manner, we recommend including a control sample in which UV  
8 irradiation was omitted. If the availability of labels for the proteomic analysis is  
9 limited, a separate experiment including this control can be performed (as in <sup>3</sup>)  
10 prior to the comparative analyses. If samples under study are very similar, a  
11 single non-irradiated control of a representative condition can be used. However,  
12 when comparing more profoundly different samples (e.g. different cell types,  
13 differentiation, long treatments, etc.), we strongly recommend parallelizing one  
14 non-irradiated control to each UV-irradiated sample/condition under study. To  
15 minimize the incidence of false positives, we typically classify as RBP any protein  
16 that is enriched in the UV irradiated over the non-irradiated control with 1% false  
17 discovery rate (FDR). For the comparative analysis, the 'treated samples' should  
18 be compared to a reference 'untreated' or 'control' condition. For example, cells  
19 infected with a virus would be compared to an uninfected control<sup>15</sup>.

20 Total proteomic analysis of the cell lysates used as inputs for the eRIC  
21 experiment is a very informative addition. The protein intensity ratio between  
22 eluates and inputs represents the proportion of protein that crosslinks to RNA  
23 upon UV irradiation (crosslinked/total)<sup>15,36</sup> (Fig. 3a-c). The eluate/input ratio will  
24 be influenced by the amino acid and nucleotide composition, geometry, avidity  
25 and duration of the protein-RNA interaction, as these parameters control the

1 ability of a protein to crosslink to RNA<sup>25</sup>. For example, heterogenous  
2 ribonucleoproteins (hnRNPs) establish interactions with RNA that involve multiple  
3 high-affinity RNA-binding domains (RBDs). Such long-lived, optimal protein-RNA  
4 interactions will give rise to high eluate/input ratios<sup>15</sup>. Conversely, moderate to  
5 low eluate/input ratios are expected for RBPs establishing transitory interactions  
6 with RNA (e.g. endonucleases) or when only a subpopulation of the protein  
7 engages in RNA binding (e.g. moonlighting RBPs<sup>24,25,45</sup>). Moreover, we advise  
8 that proteins with low eluate/input ratios, which typically appear as outliers in the  
9 bottom-left corner of scatter plot (Fig. 3c), should be taken carefully as they may  
10 be contaminants or incidental RNA interactors. If interested in a protein falling  
11 into this category, we recommend validation with orthogonal methods. The  
12 eluate/input ratios have recently been used to model the RNA-binding activities  
13 present in large ribonucleoprotein complexes such as the exosome or the  
14 ribosome<sup>36</sup>. Other important applications of the eluate/input ratios are described  
15 in the anticipated results section.

16

### 17 **Selection of the proteomic approach**

18 We have successfully applied two quantitative proteomic approaches to perform  
19 comparative RIC analyses: SILAC and TMT. Use of metabolic labeling (SILAC)  
20 aids precision and accuracy but possess limited multiplexing. Isobaric labeling  
21 such as TMT resolves the multiplexing issue but at the cost of accuracy. There  
22 are reviews describing the strength and weaknesses of these approaches<sup>46,47</sup>.  
23 SILAC involves the metabolic incorporation of heavy, medium or light isotopic  
24 amino acids into proteins in cultured cells (Fig. 2). For this, cells are grown in  
25 media with dialyzed fetal calf serum containing either isotopic variant of

1 (typically) lysine and arginine. When using this approach, isotope incorporation  
2 rate must be measured in a pilot experiment. For efficient SILAC-based  
3 proteomics, near-complete incorporation rates are required, as lower  
4 incorporation rates will compromise the quantification accuracy. For example,  
5 if the isotope is incorporated only in 95% of the proteins it would cause on/off  
6 changes (i.e. present in condition A and absent in condition B) to be observed  
7 as a fold change of 19 (95 divided by 5). As proteins are labelled in cellulo,  
8 samples can be mixed immediately after UV crosslinking and cell lysis, and the  
9 RNA capture is performed with the combined samples. This reduces technical  
10 noise and enhances reliability and accuracy of the protein quantifications.  
11 However, the application of SILAC is mostly limited to cultured cells, and  
12 specifically to cell types that can be maintained in dialyzed serum. Cells are  
13 typically cultured for 5-6 population doublings in SILAC medium to reach high  
14 labelling efficiencies (>99%), and thus SILAC is not compatible, in principle,  
15 with cells that can only be cultured for a limited time (e.g. certain primary cells).  
16 Isobaric reagents such as TMT employ chemical labelling of peptides, and are  
17 thus applied after protein elution, concentration and digestion (Fig. 2). Post-  
18 elution peptide labelling is compatible with virtually any biological system. The  
19 availability of numerous labels allows multiplexing of presently up to sixteen  
20 samples in a single run, in contrast to the three labels available for SILAC. The  
21 high multiplexing capability simplifies the execution of experiments with larger  
22 sample sets, such as those involving multiple treatment conditions or time  
23 points. Nevertheless, as peptide labeling is performed further downstream in  
24 the protocol, it does not benefit from the early pooling of samples to reduce  
25 technical noise and this can compromise the detection of subtle differences.

1 Moreover, quantification is performed at the ms2 or ms3 level, and thus state-  
2 of-the-art mass spectrometers are required for efficient and fast quantification.  
3 Quantification and identification with isobaric labelling are performed on the  
4 same peptide spectrum thus requiring the mass spectrometry method to strike  
5 a balance between identification efficiency and quantification quality. However,  
6 the higher 'multiplexing' of TMT reduces mass spectrometry time per sample,  
7 allowing the implementation of fractionation to address the identification and  
8 quantification loss. Separation of the sample into 3-5 fractions by, for example,  
9 high-pH reverse phase StageTip<sup>48</sup> or other methods, is thus highly  
10 recommended.

11 Both SILAC and TMT can, in principle, be extended to more conditions than  
12 labels available by running a complete experiment in multiple mass  
13 spectrometry runs and splitting the conditions between runs. In this case, it is  
14 a requisite to run a 'reference' sample (e.g. untreated cells) as a standard in  
15 each run, so that ratios between conditions can be robustly generated.

16 In conclusion, we recommend using SILAC when possible, due to its higher  
17 robustness, especially when comparing up to three conditions. TMT or similar  
18 isobaric tagging strategies will be the approach of choice when using SILAC-  
19 incompatible cells, tissues or organisms. It will also be the optimal choice when  
20 assessing a large set of conditions. Fractionation is highly recommended when  
21 performing TMT experiments.

22 Although SILAC and TMT provide the highest quantification accuracy and  
23 multiplexing capacity, RIC/eRIC can be combined with virtually any quantitative  
24 proteomic approach. For example, a recent study has applied label-free  
25 quantitation successfully to *Saccharomyces pombe*<sup>36</sup>.

1

## 2 **DNA vs LNA probes**

3 We and others have shown that the use of conventional oligo (dT) DNA capture  
4 probes in RIC experiments can lead to contamination with non-poly(A) RNAs  
5 such as rRNA. Indeed, depending on the cell type employed and the  
6 experimental settings, rRNA can represent from 10% to 30% of the eluted RNA  
7 <sup>1,2,14</sup>. Proteins that copurify with these abundant non-polyadenylated RNAs  
8 (e.g. ribosomal proteins) generate dominant tryptic peptides that mask those  
9 from less abundant RBPs. Co-purification of gDNA can also be problematic as  
10 it could lead to contamination with DNA-binding proteins or proteins  
11 nonspecifically tangled on the chromatin fibers. This can critically impact the  
12 quality of RIC experiments when working with nuclear fractions or cells with a  
13 low cytoplasm/nucleoplasm ratio such as T lymphocytes. Both contamination  
14 with non-polyadenylated RNAs and gDNA can be strongly reduced when using  
15 a 20-mer oligo(dT) probe containing locked nucleic acids (LNAs) at every other  
16 position (LNA2.T)<sup>14</sup>. LNAs increase the rigidity of the probe promoting an  
17 optimal conformation for hybridization with complementary RNA. The original  
18 RIC protocol employs very stringent purification conditions, focused on  
19 removing non-covalently linked proteins from the RNA. The increased  
20 hybridization strength that the inclusion of LNAs in the oligo(dT) probe  
21 provides, allows to additionally maximize the selectivity of the protocol towards  
22 poly(A) RNAs. For example, in eRIC the capture of poly(A) RNA and  
23 subsequent washes are performed at 37 °C instead of 4 °C. Moreover, it  
24 includes a 'pre-elution' (final wash) step in water to remove partial hybrids and  
25 loosely bound RNAs and DNA<sup>14,16</sup> (Fig. 1). The low ionic strength during this



1 pre-elution step destabilizes nucleic acid duplexes, particularly partial hybrids,  
2 resulting in efficient removal of rRNA and gDNA (Fig. 4).  
3 Here, we describe how to perform comparative RIC studies with the LNA2.T  
4 beads (i.e. eRIC), due to the remarkable advantages that this probe adds to  
5 the protocol. However, the original DNA oligo(dT) beads have also been  
6 successfully used in comparative RIC experiments<sup>10,15,36</sup>. If using the original  
7 DNA probe, apply the experimental design and protocol described here but  
8 employ 4 °C during the hybridization step and washes and omit the pre-elution  
9 step. Elution can be performed by heating (at 55°C for 3 min) or RNase release  
10 as indicated below.

11

## 12 **Starting material**

13 Incorporation of SP3 together with modifications in the protocol and  
14 improvements on mass spectrometry instrumentation have allowed to  
15 considerably reduce the starting material required to generate a deep RBPome.  
16 For example, we have achieved deep RBPomes from ~50-90 million HeLa and  
17 HEK293 cells or ~100-150 million Jurkat cells. For orientation, an optimal eRIC  
18 experiment should lead to ~15-30 µg of eluted poly(A) RNA per sample to ensure  
19 successful downstream proteomic applications. We have noticed that in some  
20 cell lines, such as T lymphocytic cells, nuclear RBPs are substantially more  
21 abundant than their cytoplasmic counterparts. In such cases, peptide  
22 fractionation prior to mass spectrometry greatly improves the identification and  
23 quantification of the cytoplasmic RBPs, increasing the dynamic range of the  
24 experiment.

1 RIC and case-specific variations of it have successfully been applied to several  
2 unicellular<sup>5,8,9,12,34,36</sup> and multicellular organisms<sup>8,10,11,35</sup> and it is applicable to  
3 tissues<sup>13</sup>. Starting material and other parameters such as UV light dose must be  
4 adapted to the system under study. An excellent starting point is to use the  
5 conditions described in the original publications<sup>5,8-13,34-36</sup>, and to further optimize  
6 the protocol with small-scale pilot experiments, if required.

7

### 8 **Successive rounds of capture**

9 To maximize poly(A) RNA capture, we perform two sequential rounds of oligo(dT)  
10 capture of the same lysate, using 300  $\mu$ L of oligo(dT) magnetic beads per round.  
11 While two rounds of oligo(dT) capture suffice, in most cases, to capture most  
12 poly(A) RNAs from cell extracts, a third round could be required in some  
13 instances. To evaluate if the poly(A) RNA depletion has been sufficient, RNA  
14 present in each elution round should be measured with e.g. a NanoDrop,  
15 separately. Near complete depletion of poly(A) RNA in the lysate leads to a strong  
16 reduction in the RNA isolated in the following round of oligo(dT) capture due to  
17 the lack of suitable substrate to hybridize with the probe. For example, a third  
18 round of oligo(dT) capture typically leads to only 15-10% of the RNA isolated in  
19 the first round. In such case, we only recommend performing 2 rounds of capture  
20 as the contribution of a third to the proteomic results will be residual.

21 The efficiency of the oligo(dT) capture can be estimated more accurately using  
22 RT-qPCR analysis using primers against selected poly(A) RNAs (e.g. *ACTB* or  
23 *GAPDH*) in cell lysates before and after the oligo(dT) capture. An efficient eRIC  
24 experiment will reduce the levels of a given poly(A) RNA by at least 80%.  
25 Conversely, rRNAs are not expected to be depleted.

1

## 2 **eRIC optimization**

3 When applying eRIC for the first time to a given cell line, tissue or organism, we  
4 recommend performing small-scale experiments (Fig. 1 and Fig. 4). RNA in  
5 inputs and eluates can be quality controlled using bioanalyzer and RT-qPCR to  
6 assess the proportion of poly(A) RNA versus rRNA. A strong enrichment of  
7 poly(A) RNA (e.g. *ACTB* mRNA) over rRNA (e.g. *18S* rRNA) is expected in  
8 eluates when compared to inputs (Fig. 4a; see 'anticipated results'). In parallel,  
9 RBP isolation can be tested by silver staining (Fig. 4b) or western blotting using  
10 antibodies against well-established RBPs and negative controls (e.g. PTBP1 and  
11 *ACTB*, respectively)<sup>3</sup>. RIC's ability to efficiently isolate RBPs and poly(A) RNA is  
12 typically dictated by few key steps that benefit from optimization. These include  
13 the i) amount of starting material, ii) the UV crosslinking approach, iii) the cell lysis  
14 procedure, and the iv) homogenization of the cell lysate. Optimal starting material  
15 is thus fundamental to achieve efficient eRIC experiments. Lack of proteins in  
16 eluates despite good quality RNA can often be solved by increasing the number  
17 of cells. Still, some cell types (e.g. primary T cells, primary macrophages), give  
18 inherently low number of proteins even from large amounts of captured RNA.  
19 Conversely, high incidence of contaminant proteins can be caused by excessive  
20 protein, RNA and DNA concentration in lysates. We have already estimated the  
21 optimal number of cells for HeLa, HEK293 and Jurkat (as indicated in 'Starting  
22 material' above). However, cell numbers may need adjustment when working  
23 with other cell types. Correct estimation of the starting material becomes more  
24 challenging when dealing with multicellular organisms and tissues. In those  
25 cases, the starting material will strongly depend on the ability to crosslink protein-

1 RNA interactions with UV light (see below). Improving UV crosslinking efficiency  
2 will effectively reduce the input material required; however, excessive UV  
3 irradiation can lead to protein and RNA damage.

4 UV crosslinking can be achieved either exploiting the natural excitability of  
5 nucleotide bases at 254 nm (conventional crosslinking; CL)<sup>49</sup> or employing  
6 nucleotide analogues such as 4-thiouridine (4SU) or 4-thiouracil (4TU) that  
7 promote efficient crosslinking between 312 and 365 nm UV light  
8 (photoactivatable ribonucleoside-enhanced crosslinking; PAR-CL)<sup>50</sup>. While CL  
9 suffices for most cell lines and is readily applicable to tissues and multicellular  
10 organisms, PAR-CL has shown higher performance in budding and fission  
11 yeast<sup>5,36</sup>. Hence, the choice of the crosslinking approach will depend on the  
12 model system.

13 Moreover, UV crosslinking efficiency may differ depending on the properties of  
14 the sample. When using cell monolayers, 150 mJ/cm<sup>2</sup> of 254 nm UV is a good  
15 balance between crosslinking efficiency and lack of RNA damage. However, the  
16 optimal dose might vary slightly from cell line to cell line. Conversely, tissues and  
17 multicellular organisms may require substantially higher UV irradiation regimens.  
18 For example, the optimal UV dose for *Drosophila* embryos is 4 J/cm<sup>2</sup><sup>10</sup>.

19 Cell lysates are viscous and one of the key optimization steps is to find the optimal  
20 proportion between lysis buffer, biological material and beads. For example, we  
21 found that 10 mL of lysis buffer and 300  $\mu$ L of beads are optimal for selective  
22 RBP capture for ~50-90 million HeLa cells or 100-150 million Jurkat cells. Cell  
23 lysates are homogenized using a 5 mL syringe and a narrow needle until a water-  
24 like solution is achieved. This step is critical as it promotes the disruption of  
25 cellular membranes and the breakage of cellular DNA, reducing lysate viscosity

1 and avoiding the generation of precipitates. If despite of an efficient  
2 homogenization, precipitates are observed, increase the lysis buffer volume,  
3 homogenize as indicate above and pre-clear the lysate by centrifugation prior to  
4 the oligo(dT) capture. See TROUBLESHOOTING.

5

## 6 **HPLC and mass spectrometry parameters**

7 For a successful comparative eRIC experiment it is critical to have a suitable  
8 proteomic workflow in place. Sample preparation can be performed with any  
9 classical technique, including filter-aided sample preparation (FASP)<sup>51</sup> or TCA  
10 precipitation<sup>52</sup>. However, to increase sensitivity while reducing the starting  
11 material, we employ SP3<sup>18,19,53</sup>. This approach allows efficient removal of  
12 detergents and other mass spec-incompatible chemicals, while ensuring efficient  
13 protein trypsinization and peptide recovery.

14 In some experimental settings (see 'selection of the proteomic approach'),  
15 peptide fractionation is required to improve protein coverage. In those cases, we  
16 apply high pH reversed-phase peptide fractionation<sup>54</sup> or similar approaches<sup>55,56</sup>  
17 prior to LC/MS analysis. The number of fractions can vary in a case-specific  
18 manner, but five fractions normally suffice to provide an excellent depth. Peptides  
19 are analyzed on a liquid chromatography–tandem mass spectrometry (LC-  
20 MS/MS) platform. We used an Ultimate 3000 ultra-HPLC system (ThermoFisher  
21 Scientific) coupled to an Orbitrap Elite, QExactive or QExactive plus mass  
22 spectrometer (Thermo Fisher Scientific)<sup>14,15</sup>. However, it is possible to use other  
23 equipment with similar characteristics and performance. During LC/MS analysis,  
24 each fraction is further separated on low pH gradient of solvent B, the composition  
25 of gradient and duration of the separation depend on the complexity of the sample

1 and it should be adjusted for maximum protein identification. Specific mass-  
2 spectrometric parameters (such as dynamic exclusion, collision energy, etc) are  
3 dependent on the instrument. The current protocol does not require any specific  
4 adjustments and can be adapted to virtually any platform optimized for routine  
5 protein identification. We recommend monitoring the LC-MS performance  
6 between samples and/or fractions by running a blank sample spiked with 20 fmol  
7 digested BSA on a 15 min gradient after each sample and/or fraction. BSA  
8 digests have characteristic standard chromatographic peaks, which can be used  
9 as a proxy to assess the performance of the nanoflow HPLC. Moreover, it will  
10 help to clean carryover contaminants between samples.

11

## 12 **Statistical data analysis**

13 For robust statistical analysis, it is recommended to generate at least three  
14 biologically independent replicates of the complete experimental set, which will  
15 include the reference condition (e.g. uninfected cells), treatments (e.g. virus  
16 infected cells) and, depending on the experimental design, a negative control  
17 (e.g. non-irradiated cells). For more details see 'controls'. Experimental  
18 conditions causing subtle variations in the RBPome or with high intrinsic inter-  
19 sample variability (e.g. clinical samples), may require higher number of replicates.  
20 Peptides are identified and clustered into protein groups and quantified using  
21 standard software such as MaxQuant<sup>57</sup>. Ion counts across samples are  
22 summarized and protein intensity ratios between conditions are generated.  
23 Significance of the changes is tested using moderated t-test corrected for multiple  
24 testing with a Benjamini-Hochberg correction. Software implementation (e.g.  
25 Perseus) and customized R packages (Proteus) are available<sup>15,32,57,58</sup>. In some

1 instances, data normalization and/or batch corrections are required. Analysis of  
2 comparative RIC/eRIC experiments are done in two sequential steps. We first  
3 compare protein intensities in UV-irradiated and non-irradiated controls and  
4 define as RBPs those proteins that are enriched in irradiated over non-irradiated  
5 samples with 1% FDR. Secondly, responsive RBPs are identified by comparing  
6 the protein intensities of each RBP in crosslinked samples subjected to the  
7 different experimental conditions. To define the RBP responses it is critical to  
8 avoid normalization against non-irradiated samples, as signal in these controls is  
9 low and noisy and provokes artificial distortions of the data when used as  
10 normalizer. We typically classify as 'high-confidence' or 'candidate' dynamic RBP  
11 any protein that passes the 1% and 10% FDR cut-offs, respectively.

12 Unfortunately, it is not trivial to analyze RBPs with missing ion counts in one  
13 experimental condition due to the impossibility to generate a ratio. There are two  
14 alternatives to deal with such cases and 'rescue' genuine RBPs (if comparing  
15 irradiated vs non-irradiated samples) or responsive RBPs (if comparing two  
16 experimental conditions). The first employs a semi-quantitative analysis that  
17 takes into consideration the incidence of signal in one condition and lack of signal  
18 in the other<sup>10,15</sup>. Alternatively, it is possible to impute missing values using  
19 different computational approaches<sup>59</sup>. The minimum determination method  
20 (Mindet)<sup>59</sup> is one of the most commonly used strategies, in which the missing  
21 values are replaced by the lowest value detected either globally in the entire  
22 dataset or within each sample. Either option has strengths and weaknesses:  
23 while the semi-quantitative method does not require the imputation of artificial  
24 values, it does not provide ratios to estimate the amplitude of the effect, which  
25 may hinder downstream interpretation. Conversely, data imputation provides

1 ratios and thus these RBPs can be included in the statistical analysis. However,  
2 imputation methods can introduce artefacts that may affect the statistical  
3 analysis. In any case, we recommend applying either strategy.

4

## 5 **Complementary analyses**

6 Cellular stimuli often trigger changes at multiple levels, including transcriptomic  
7 and proteomic changes. In order to identify the driving factors of the RBP  
8 responses we recommend combining comparative RIC analyses with both total  
9 proteome and transcriptome analyses. These analyses will provide a snapshot of  
10 the protein and RNA landscapes in the experimental conditions, which can be  
11 used to interpret the RIC/eRIC results. In other words, the parallel analysis of  
12 both protein and RNA abundance is instrumental to determine if any (or both) of  
13 these factors contribute to the comparative RIC results<sup>10,15</sup>. These  
14 complementary analyses will be discussed in greater extent in ‘anticipated  
15 results’.

16

## 17 **MATERIAL**

### 18 **Reagents**

#### 19 **Biological materials**

20

- 21 • HeLa cells (ATCC, cat. no. CCL-2;  
22 [https://scicrunch.org/resolver/CVCL\\_0030](https://scicrunch.org/resolver/CVCL_0030))
- 23 • Jurkat cells (DSMZ, cat. no. ACC-282,  
24 [https://scicrunch.org/resolver/CVCL\\_0065](https://scicrunch.org/resolver/CVCL_0065)).



1 CAUTION: The cell lines used should be regularly checked to ensure they  
2 are authentic and are not infected with mycoplasma.

### 3 **Cell culture reagents**

- 4 • DMEM (Thermo Fisher Scientific, cat. no. 11995065)
- 5 • DMEM for SILAC (Thermo Scientific, cat. no. 88364)
- 6 • RPMI 1640 (Thermo Fisher Scientific, cat. no. 21875034)
- 7 • RPMI-1640 for SILAC (SILANTES, cat. no. 283001300)
- 8 • Fetal bovine serum (FBS; Thermo Fisher Scientific, cat. no. 10500064)
- 9 • Glutamine (Gibco, cat. no. G7513)
- 10 • Penicillin/streptomycin (Sigma-Aldrich, cat. no. P4333)
- 11 • Dialysed fetal bovine serum (SILANTES, cat. no. 281000900)
- 12 • Unlabeled L-Arginine HCl (SILANTES, 201004102).  $C_6H_{14}N_4O_2 \cdot HCl$
- 13 •  $^{13}C$ -,  $^{15}N$ -labelled L-Arginine HCl (SILANTES, cat. no. 201604102).  
14  $^{13}C_6H_{14}^{15}N_4O_2 \cdot HCl$
- 15 •  $^{13}C$ -labelled L-Arginine HCl (SILANTES, cat. no. 201204102).  
16  $^{13}C_6H_{14}N_4O_2 \cdot HCl$
- 17 • Unlabeled L-Lysine HCl (SILANTES, cat. no. 211004102).  
18  $C_6H_{14}N_2O_2 \cdot HCl$
- 19 •  $^{13}C$ -,  $^{15}N$ -labelled L-Lysine HCl (SILANTES, cat. no. 211604102):  
20  $^{13}C_6H_{14}^{15}N_2O_2 \cdot HCl$
- 21 •  $^2H$ -labelled D4 L-Lysine 2HCl (SILANTES, cat. no. 211104113).  
22  $C_6D_4H_{10}N_2O_2 \cdot 2HCl$ . D, deuterium
- 23 • Sterile filter 0.22  $\mu m$  pore size (Millipore cat no: SCGVU05RE)
- 24 •

1

2 **eRIC reagents**

- 3 • Potassium chloride (KCl) (Merck, cat. no. 1.04936.1000)
- 4 • Potassium dihydrogen phosphate ( $\text{KH}_2\text{PO}_4$ ) (Merck, cat. no.  
5 1.04873.1000)
- 6 • di-Sodium hydrogen phosphate ( $\text{Na}_2\text{HPO}_4$ ) (Merck, cat. no.  
7 1.06586.0500)
- 8 • Sodium chloride (NaCl) (Merck, cat. no. 1.06404.1000)
- 9 • Calcium chloride ( $\text{CaCl}_2$ ) (Merck, cat. no. 1.02382.1000)
- 10 • RNase T1 (Sigma-Aldrich, cat. no. R1003)
- 11 • RNase A (Sigma-Aldrich, cat. no. R5503)
- 12 • Complete Protease Inhibitor Cocktail (Roche, cat. no. 11873580001)
- 13 • Trizma base (Sigma-Aldrich, cat. no. T1503)
- 14 • Lithium dodecyl sulfate (LiDS) (Carl Roth, cat. no. CN25.3)
- 15 CAUTION: Harmful if swallowed or inhaled. Can cause serious eye  
16 damage. Wear suitable protective equipment, especially when handling as  
17 powder.
- 18 • Lithium chloride (LiCl) (Sigma-Aldrich, cat. no. 62476)
- 19 • Ethylenediaminetetraacetic acid (EDTA) Disodium Salt, Dihydrate (Merck,  
20 cat. no. 324503)
- 21 • Dithiothreitol (DTT) (Biomol, cat. no. 04020.100)
- 22 • IGEPAL® CA-630 (Nonidet P-40 (NP-40) replacement) (Sigma-Aldrich,  
23 cat. no. I3021)
- 24 • Sodium dodecyl sulfate (SDS) (Serva, cat. no. 20765)

1 CAUTION: Harmful if swallowed or inhaled. Can cause serious eye  
2 damage. Wear suitable protective equipment, especially when handling as  
3 powder.

- 4 • Triton X-100 (Sigma-Aldrich, cat. no. T8787)
- 5 • Sodium deoxycholate (Sigma-Aldrich, cat. no. D6750)

6 CAUTION: Harmful if swallowed. Causes skin irritation and serious eye  
7 irritation. May cause respiratory irritation. Wear dust mask type N95 (US),  
8 protective goggles and gloves.

- 9 • Pierce™ 660nm Protein assay kit (Thermo Scientific, cat. no. 22662)
- 10 • Ionic Detergent Compatibility Reagent (Thermo Scientific, cat. no. 22663)

## 12 Reagents for generation of LNA probes

- 13 • LNA2.T capture probe:  
14 /5AmMC6/+TT+TT+TT+TT+TT+TT+TT+TT+TT+TT (+T: LNA thymidine,  
15 T: DNA thymidine) (HPLC purified; Exiqon-Qiagen). The probe bears a  
16 primary amine at the 5' end followed by a flexible C6 linker and 20  
17 thymidine nucleotides in which every other nucleotide is an LNA. The  
18 required scale of synthesis will depend on the number of samples and  
19 capture rounds. A detailed description on this subject is provided in section  
20 'Coupling of the LNA2.T probe to beads'.  
21 • Carboxylated magnetic beads M-PVA C11, 50 mg/mL (Perkin Elmer, cat.  
22 no. CMG-203)  
23 • 2-(N-morpholino)ethanesulfonic acid (MES) (Carl Roth, cat. no. 4256.5)

1 • N-(3-dimethylaminopropyl)-N'-ethylcarbodiimide hydrochloride (EDC-HCl)  
2 (Sigma-Aldrich, cat. no. E7750). CRITICAL Store EDC powder at -20 °C,  
3 when required handle it on ice. It is highly hygroscopic, so check that  
4 powder is dry before using it.

5 CAUTION: Toxic on contact with skin. Causes serious eye irritation. Wear  
6 protective gloves and eye protection. Very toxic for aquatic environments.  
7 Follow suitable disposal procedures

8 • ≥98% (wt/vol) ethanolamine (Sigma-Aldrich, cat. no. E9508)  
9 CAUTION: Harmful if swallowed, in contact with skin or if inhaled. Causes  
10 severe skin burns and eye damage. Wear protective gloves and eye  
11 protection. Very toxic for aquatic environments. Follow suitable disposal  
12 procedures

13 • Nuclease-free water (Ambion, cat. no. AM9937)

14 • Tween® 20 (Carl Roth, cat. no. 9127.2)

15 CRITICAL Alternatively, oligo(dT) (DNA) probes [Oligo(dT25) magnetic beads  
16 (New England Biolabs, cat. no. S1419S)] can be used instead of the LNA2.T  
17 probes. If so, use 4 °C instead 37 °C during the capture and washes and omit  
18 pre-elution.

19

## 20 **Mass spectrometry and SP3 reagents**

21 • 1M Tetraethylammonium tetrahydroborate (TEAB) (Thermo Fisher  
22 Scientific, cat. no. 90114)

23 • SP3 purification beads: Speed Bead Magnetic Carboxylate Modified  
24 Particles, 15 mL, Azide 0.05%, (Sigma-Aldrich, cat. no. 45152105050250)

1 CRITICAL Note that these beads are for sample preparation for  
2 proteomics and not for poly(A) RNA capture.

3 CAUTION: Azide is highly toxic, wear gloves and avoid contact with skin.

- 4 • Reduction buffer: Bond-Breaker™ TCEP Solution (Thermo Fisher  
5 Scientific, cat. no. 77720)

6 CAUTION: Causes severe skin burns and eye damage. Wear gloves,  
7 clothing and face/eye protection.

- 8 • Chloroacetamide (CAA) (Sigma-Aldrich, cat. no. C0267)

9 CAUTION: Toxic if swallowed. May cause allergic skin reaction. Wear  
10 protective gloves and clothing.

- 11 • Absolute Ethanol (Sigma-Aldrich, cat. no. 34852)

- 12 • Acetonitrile (ACN) (Sigma-Aldrich, cat. no. 271004)

- 13 • Dimethyl sulfoxide (DMSO) (Sigma-Aldrich, cat. no. 34869)

- 14 • Water LC-MS Grade (Pierce, cat. no. 51140)

- 15 • Trypsin Gold, MS grade (Promega, cat. no. V5280)

16

17 **TMT reagents:**

- 18 • TMT Isobaric Label Reagent TMT10plex (Thermo Fisher Scientific, cat.  
19 no. 90111) Alternatively, duplex TMT, Sixplex TMTTMT11plex, or TMTpro  
20 16plex can be used according to the number of samples.

- 21 • OASIS HLB  $\mu$ Elution Plate (Waters, cat. no. 186001828BA)

22

23 **Reagents for eRIC quality assessment**

- 24 • SilverQuest™ Silver staining kit (Invitrogen, cat. no. LC6070)

- 1 • TURBO DNA-free Kit (Life Technologies, cat. no. 1907)
- 2 • SuperScript II reverse transcriptase (Invitrogen, cat. no. 18064-014)
- 3 • SYBR Green PCR Master Mix (Life Technologies, cat. no. 4309155)
- 4 • Random hexamers (Life Technologies)
- 5 • Antibodies (Table 1)
- 6 • qPCR primers for human samples (Table 2)
- 7 • qPCR primers for mouse samples (Table 3)
- 8

Antigen	Company, catalogue	RRID	Dilution
$\beta$ -Actin	Sigma-Aldrich, A1978	<a href="#">AB 476692</a>	1:5000
Histone H4	Abcam, ab10158	<a href="#">AB 296888</a>	1:4000
Polypyrimidine tract binding protein (PTBP1)	Sigma-Aldrich, WH0005725M1	<a href="#">AB 1843067</a>	1:5000
Cold shock domain-containing protein E1 (CSDE1)/UNR	Proteintech, 13319-1-AP	<a href="#">AB 2084902</a>	1:5000
Non-POU domain-containing octamer-binding protein (NonO)	Novus Biologicals, NBP1-95977	<a href="#">AB 11056638</a>	1:1000
ELAV-like protein 1 (ELAVL1)/Hu-antigen R (HuR)	Proteintech, 11910-1-AP	<a href="#">AB 11182183</a>	1:5000

9 **Table 1. Antibodies employed in Western blot analyses of eRIC eluates**

1  $\beta$ -Actin and histone H4 are negative controls, the rest correspond to positive  
 2 controls.

3

Name	Sequence
Hm <i>ACTB</i> Fw	GTCATTCCAATATGAGATGCGT
Hm <i>ACTB</i> Rv	GCTATCACCTCCCCTGTGTG
Hm <i>GAPDH</i> Fw	CCCCACCACACTGAATCTCC
Hm <i>GAPDH</i> Rv	GTACATGACAAGGTGCGGCT
Hm 18S rRNA Fw	GAAACTGCGAATGGCTCATTA
Hm 18S rRNA Rv	CACAGTTATCCAAGTGGGAGAGG
Hm 28S rRNA Fw	TTACCCTACTGATGATGTGTTGTTG
Hm 28S rRNA Rv	CCTGCGGTTCTCTCGTA

4

5 **Table 2. qPCR primers for quality assessments of eRIC eluates of human**  
 6 **origin.** All sequences from 5' to 3', forward: Fw, reverse: Rv. Note that *GAPDH*  
 7 and *ACTB* forward and reverse primers are designed to target a unique exon of  
 8 the respective gene and are suitable to quantify both gDNA and cDNA levels.

9

Name	Sequence
Ms <i>Bact</i> Fw	AGAGGGAAATCGTGCGTGAC
Ms <i>Bact</i> Rv	CAATAGTGATGACCTGGCCGT
Ms <i>Gapdh</i> Fw	AACGACCCCTTCATTGACCT
Ms <i>Gapdh</i> Rv	ATGTTAGTGGGGTCTCGCTC
Ms 18S rRNA Fw	GCAATTATTCCCATGAACG

Ms 18S rRNA Rv	GGGACTTAATCAACGCAAGC
Ms 28S rRNA Fw	AAGCGTTGGATTGTTACCCC
Ms 28S rRNA Rv	TCCTCAGCCAAGCACATACA

1

2 **Table 3. qPCR primers for quality assessments of eRIC eluates of mouse**

3 **origin.** All sequences from 5' to 3', forward: Fw, reverse: Rv. Note that *GAPDH*

4 and *ACTB* forward and reverse primers are designed to target a unique exon of

5 the respective gene and are suitable to quantify both gDNA and cDNA levels.

6

## 7 **Equipment**

- 8 • Class II biosafety cabinet (generic)
- 9 • Humidified 37 °C, 5% CO<sub>2</sub> incubator (generic)
- 10 • Spectrolinker XL-1500 UV cross-linkers (Spectroline) (254 nm bulbs, BLE-
- 11 1T155)
- 12 • Rotator (e.g. Grant-bio, PTR-35)
- 13 • Conventional incubator without humidification or CO<sub>2</sub> control at 37 °C used
- 14 for the oligo(dT) capture (Aqualytic, Thermostat Cabinet or similar)
- 15 • SpeedVac concentrator (Thermo Fisher Scientific)
- 16 • Refrigerated benchtop centrifuge (e.g. Eppendorf, 5415R)
- 17 • Thermal block (e.g. Eppendorf, cat. no. 5382000015)
- 18 • 500 cm<sup>2</sup> dishes (Greiner-BioOne, cat. no. 639160) – for adherent cells
- 19 • 175 cm<sup>2</sup> flasks (Falcon, cat. no. 353028) – for suspension cells
- 20 • 150 mm uncoated petri dishes (Greiner Bio-One, 639102) – for
- 21 suspension cells



- 1       • Generic metal plate to accommodate 2 x 150 mm petri dishes into the UV  
2       crosslinker - for suspension cells
- 3       • 500 mL Steritop Quick Release-GP funnel (Millipore, cat. no.  
4       S2GPT05RE)
- 5       • Needle 22G x 1 1/4-inch; Nr. 12, 0.7 mm x 30 mm (BD Microlance, cat.  
6       no. 300900) or alternatively Sterican blunt Needle 21G, 0.8 x 22 mm  
7       (VWR, cat. no. 720-2562).
- 8       CAUTION: handle needles with precaution to avoid harm. We recommend  
9       using blunt variants. Dispose the needles in the appropriate sharp bin.
- 10      • Sterican blunt Needle 27G, 0.4 x 25mm (VWR, cat. no. 720-2563)
- 11      CAUTION: handle needles with precaution to avoid harm. We recommend  
12      using blunt variants. Dispose the needles in the appropriate sharp bin.
- 13      • Syringes (5 mL; Luer-lock; Medicina, cat. no. IVL05)
- 14      • DNA LoBind tubes (Eppendorf, 1.5 mL: cat. no. 022431021; 5.0 mL: cat.  
15      no. 0030108310; 15 mL: cat. no. 0030122208; 50 mL: cat. no.  
16      0030122232)
- 17      • Magnetic separation rack, 50 mL (NEB, cat. no. S1507S). For analytical  
18      experiments, 12-tube (2 mL) Magnetic separation rack (NEB, cat. no.  
19      S1509S) or DynaMag-2 (Invitrogen, cat. no. 123.21D)
- 20      • NanoDrop spectrophotometer (Thermo Fischer Scientific)
- 21      • Bioanalyzer with RNA 6000 Pico Kit (Agilent Technologies, cat. no. 5067-  
22      1513 and G2939BA)
- 23      • Real-time PCR system (e.g. Bio-Rad, CFX96 Touch Real time system, or  
24      similar)

- Tandem mass spectrometer (e.g. Thermo Scientific Orbitrap Fusion, Q-Exactive, Bruker Impact II or similar)

#### Software for proteomic data analysis

- Protein identification by database searching: Mascot (MatrixScience, [http://www.matrixscience.com/distiller\\_download.html](http://www.matrixscience.com/distiller_download.html)), Sequest (Thermo Fisher Scientific, <http://www.selectscience.net/products/sequest-cluster/?prodID=10319#tab-2>) or Andromeda<sup>60</sup> (via MaxQuant<sup>57</sup>).
- Protein quantification: MaxQuant (<https://maxquant.org/>)<sup>57</sup>.
- R software (<http://www.r-project.org/>)
- Bioconductor software (<http://www.bioconductor.org/>), in particular, limma (<https://bioconductor.org/packages/release/bioc/html/limma.html>)<sup>61</sup>.

#### Reagent setup

##### Cell culture and SILAC reagents

- Cell culture media: HeLa cells and Jurkat cells are maintained in DMEM or RPMI-1640, respectively. These media are supplemented with 10% (vol/vol) fetal bovine serum (FBS), glutamine, penicillin/streptomycin, and cells are maintained in a humidified incubator at 37 °C and 5% CO<sub>2</sub>.
- Cell culture media for SILAC: For SILAC, combine medium without arginine and lysine (DMEM for HeLa or RPMI-1640 for Jurkat), with 10% (vol/vol) dialyzed FBS. Prepare one bottle for each SILAC labelling condition by adding either unlabeled arginine and lysine (light medium), <sup>13</sup>C L-Arginine HCl and <sup>2</sup>HD<sub>4</sub> L-Lysine 2HCl (medium labeled medium) or <sup>13</sup>C<sup>15</sup>N L-Arginine HCl and <sup>13</sup>C<sup>15</sup>N L-Lysine HCl (heavy labeled medium).

1 Use 84 mg/L arginine and 146 mg/L lysine for DMEM and 200 mg/L  
2 arginine and 40 mg/L lysine for RMPI-1640. Filter the media with a 0.2 µm  
3 Sterilefilter and store at 4 °C for up to 3 months.

#### 4 **eRIC reagents**

- 5 • Phosphate-buffered saline (PBS): combine 0.2 g/L KCl, 0.2 g/L KH<sub>2</sub>PO<sub>4</sub>,  
6 1.15 g/L Na<sub>2</sub>HPO<sub>4</sub> and 8 g/L NaCl. Prepare, autoclave and store at room  
7 temperature for up to 1 year.
- 8 • 1 M DTT stock: prepare 5 mL aliquots in distilled (d)H<sub>2</sub>O and store at -20  
9 °C for up to 1 year.
- 10 • 1 M Tris-HCl (pH 7.5): dissolve 121 g Trizma base in 800 mL dH<sub>2</sub>O. Adjust  
11 pH to 7.5 with concentrated HCl. Bring volume to 1 L, autoclave and store  
12 at room temperature for up to 1 year.
- 13 • 0.5 M EDTA (pH 8.0): dissolve 186.1 g of EDTA disodium salt dihydrate in  
14 700 mL dH<sub>2</sub>O. Adjust pH to 8.0 with 10 N NaOH. Bring volume to 1 L,  
15 autoclave and store at room temperature for up to 1 year.
- 16 • 10% wt/vol LiDS: dissolve 30 g of LiDS in dH<sub>2</sub>O to a final volume of 300  
17 mL, sterilize by filtration and store at room temperature for up to 1 year.
- 18 • Lysis buffer: 20 mM Tris-HCl (pH 7.5), 500 mM LiCl, 1 mM EDTA, 5 mM  
19 DTT and 0.5% (wt/vol) LiDS. Prepare 1 L without DTT, sterilize by filtration  
20 and store at room temperature for up to 1 year. Add DTT and Complete  
21 protease inhibitor cocktail immediately before usage.
- 22 • Buffer 1: 20 mM Tris-HCl (pH 7.5), 500 mM LiCl, 1 mM EDTA, 5 mM DTT  
23 and 0.1% (wt/vol) LiDS. Prepare 1 L without DTT, sterilize by filtration and  
24 store at room temperature for up to 1 year. Add DTT and Complete  
25 protease inhibitor cocktail immediately before usage.

- 1       • Buffer 2: 20 mM Tris-HCl (pH 7.5), 500 mM LiCl, 1 mM EDTA, 5 mM DTT  
2       and 0.02% (vol/vol) NP40. Prepare 1 L without DTT, sterilize by filtration  
3       and store at room temperature for up to 1 year. Add DTT and Complete  
4       protease inhibitor cocktail immediately before usage.
- 5       • Buffer 3: 20 mM Tris-HCl (pH 7.5), 200 mM LiCl, 1 mM EDTA, 5 mM DTT  
6       and 0.02% (vol/vol) NP40. Prepare 1 L without DTT, sterilize by filtration  
7       and store at room temperature for up to 1 year. Add DTT and Complete  
8       protease inhibitor cocktail immediately before usage.
- 9       • 10x RNase buffer: 100 mM Tris-HCl (pH 7.5), 1.5 mM NaCl and 0.5%  
10      (vol/vol) NP-40. Store up to 1 year at 4 °C.
- 11      • RNase A solution. Prepare 10 mg/mL stock in Tris-HCl (pH 8.0) and 50%  
12      (vol/vol) glycerol, aliquot and store at -20 °C.
- 13      • Heat elution buffer: 20 mM Tris-HCl (pH 7.5) and 1 mM EDTA. Autoclave  
14      and store at room temperature for up to 1 year.
- 15      • RIPA buffer: 50 mM Tris-HCl (pH 7.5), 150 mM NaCl, 0.1% (wt/vol) SDS,  
16      0.5% (wt/vol) sodium deoxycholate, 1% (vol/vol) Triton X-100.

17

## 18   **Coupling reagents**

- 19      • 50 mM 2-(N-morpholino)ethanesulfonic acid (MES) buffer pH 6. Prepare,  
20      filter and store at room temperature for several months protected from light  
21      by covering the bottle with aluminum foil.
- 22      • 20 mg/mL N-(3-dimethylaminopropyl)-N'-ethylcarbodiimide hydrochloride  
23      (EDC-HCl) in MES buffer. Prepare immediately before use.

- 1 • 200 mM ethanolamine pH 8.5. Add 2.493 mL of 98% (wt/vol) ethanolamine
- 2 to ~150 mL of dH<sub>2</sub>O. Adjust pH with 10 N NaOH and bring to 200 mL with
- 3 H<sub>2</sub>O. Store at room temperature for several months.
- 4 • 1 M NaCl. Store at room temperature indefinitely.
- 5 • 0.1% (vol/vol) PBS-Tween. Store at room temperature for several months.

6

### 7 **Coupling of the LNA2.T probe to beads, Timing 8 h**

8 Commercial DNA oligo(dT) probes used in the original protocol are already  
9 coupled to magnetic beads (New England Biolabs, S1419S). Conversely, the  
10 LNA-containing probe, LNA2.T, must be coupled to magnetic beads with free  
11 carboxylic groups on their surface. Below, we describe the process for coupling  
12 the probe to the beads.

- 13 1. Calculate the required amounts of LNA2.T probe and of carboxylated  
14 beads. We employ 30 nmol of probe (300  $\mu$ L of a 100  $\mu$ M solution) coupled  
15 to 15 mg of beads (300  $\mu$ L of the original 50 mg/mL bead suspension) for  
16 one round of capture per sample. Note that LNA2.T coupled beads can be  
17 reused, at least, up to five times without noticeable loss in performance.  
18 We recommend producing enough LNA2.T coupled beads to perform all  
19 the biological replicates with the same batch. The following steps show the  
20 volumes required to produce LNA2.T-coupled beads for one round of  
21 capture in one sample. To obtain final volumes, multiply the indicated  
22 volumes of LNA2.T probe and beads by the number of samples and  
23 rounds of capture (typically two rounds). The size and number of tubes will  
24 depend on the amount of LNA2.T-coupled beads and derived final buffer  
25 volumes. We recommend using low-binding tubes throughout the process.

- 1        2. Spin down tube with lyophilized LNA2.T probe. Add 1 mL nuclease free  
2            water per 100 nmol of probe to obtain 100  $\mu$ M concentration. Vortex for 30  
3            seconds and spin down briefly.  
4            PAUSE POINT. Probe solution can be stored at  $-20\text{ }^{\circ}\text{C}$  at least for several  
5            months.
- 6        3. Wash 15 mg of beads (300  $\mu$ L of 50 mg/mL suspension) three times with  
7            5 volumes of MES buffer pH 6.
- 8        4. Freshly prepare 1.5 mL of a 20 mg/mL solution of the coupling activator  
9            EDC-HCl in MES buffer. Transfer a small aliquot ( $\sim$ 25  $\mu$ L) of the EDC  
10           solution to a new 1.5 mL tube. This will be used as blank to estimate the  
11           coupling efficiency (see below).
- 12       5. Collect the beads from step 3 on a magnet and discard the supernatant.  
13           Remove from magnet and reserve.
- 14       6. Combine 1.5 mL of EDC solution with 30 nmol of probe (300  $\mu$ L of 100  $\mu$ M  
15           probe solution). Transfer a small aliquot ( $\sim$ 25  $\mu$ L) of this probe-EDC  
16           solution to a fresh 1.5 mL tube to estimate coupling efficiency (see below).
- 17       7. Add 1.8 mL of probe-EDC solution (step 6) to 15 mg of beads (step 5) and  
18           resuspend.
- 19       8. Incubate for 5 h at  $50\text{ }^{\circ}\text{C}$  and 800 rpm in a thermal block, occasionally  
20           spinning down the liquid that condenses on the lid. Incubate likewise the  
21           small aliquots collected for quality control analysis i.e. EDC solution (step  
22           4) and probe-EDC solution (step 6).
- 23       9. Collect the beads with a magnet. Take a small aliquot ( $\sim$ 25  $\mu$ L) of  
24           supernatant to estimate coupling efficiency (see below). Set aside the

1 three ~25  $\mu$ L test samples collected in steps 4, 6 and 9 and keep them at  
2 room temperature (15-25  $^{\circ}$ C).

3 10. Wash beads with 1.75 mL of PBS. Repeat wash once.

4 11. Incubate with 1.5 mL 200 mM ethanolamine pH 8.5 for 1 h at 37  $^{\circ}$ C and  
5 800 rpm to inactivate any residual carboxyl residue. Meanwhile estimate  
6 coupling efficiency as explained in the next section.

7 12. Using a magnet, wash the LNA2.T-coupled beads three times with 1.75  
8 mL of 1 M NaCl.

9 13. Collect the beads with a magnet and resuspend in 300  $\mu$ L of PBS  
10 supplemented with 0.1% (vol/vol) Tween-20. If performing the coupling  
11 reaction in multiple tubes in parallel, combine them into a single tube of  
12 appropriate size to correct for potential coupling differences and  
13 subsequent batch effects. PAUSE POINT Coupled beads can be stored  
14 at 4  $^{\circ}$ C for at least three months. Supplement with 0.02 % sodium azide  
15 as preservative for longer storage.

16 14. Estimate the probe concentration in the probe-EDC solution collected  
17 before (step 4) and after (step 9) coupling in a NanoDrop device at 260  
18 nm wavelength, using the EDC solution (i.e. without probe) taken in step  
19 4 as a blank. A robust drop on the absorbance after coupling should be  
20 observed.

## 21 **Recycling of probe-coated beads**

22 CRITICAL LNA2.T-coupled magnetic beads can be reused several times (at least  
23 five times). Before reusing the beads, the RNase A/T1-resistant poly(A) stretches  
24 still associated with the probe must be eluted by heat to release the probe. Beads  
25

1 should also be washed several times for removal of any trace of poly(A) tails and  
2 RNases.

3 CRITICAL Steps 1-4 should be performed immediately after eRIC.

4 1. Resuspend 300  $\mu$ L of the used beads in 400  $\mu$ L of nuclease-free water  
5 and transfer them into a 1.5 mL low binding tube.

6 2. Incubate at 95 °C in a thermal block at 800 rpm for 5 min. Proceed and  
7 collect the beads immediately after, using a magnet, to prevent the sample  
8 from cooling down. Discard supernatant.

9 3. Resuspend beads in 5 volumes of water. We recommend pooling the  
10 beads used for the different conditions to ensure a homogeneous bead  
11 batch for subsequent captures. Wash three times with 5 volumes of water,  
12 using the magnet to collect the beads.

13 4. Wash the beads three times with 5 volumes of lysis buffer, if the LNA2.T-  
14 beads will be used immediately after, or with 5 volumes of PBS  
15 supplemented with 0.1% (vol/vol) Tween-20 for longer term storage at  
16 4 °C. PAUSE POINT Recycled beads can be stored for at least three  
17 months. If required, supplement with 0.02 % sodium azide as preservative  
18 for longer storage. Beads can be successfully re-used for at least five  
19 times.

20 5. Before re-using the beads stored in PBS-Tween-20, wash three times with  
21 five volumes of lysis buffer.

22

23 Commercial DNA oligo(dT) magnetic beads used in the original RIC protocol can  
24 be recycled up to three times. To do so, follow the steps described in <sup>3</sup>.

25



1 **SP3 reagents**

- 2 • 100 mM TEAB. Prepare it from a 1M TEAB stock solution in LC/MS-grade  
3 H<sub>2</sub>O immediately before use.
- 4 • Alkylation buffer. Prepare 500 mM Chloroacetamide (C-IAA) stock solution  
5 by dissolving 0.0467 g of CAA in 1 mL of 100 mM TEAB. This must be  
6 prepared immediately before use.
- 7 • Wash buffer 1: 70% (vol/vol) Ethanol (EtOH) (vol/vol) in LC/MS-grade  
8 H<sub>2</sub>O. Prepared fresh and keep at RT for up to 1 week.
- 9 • Wash buffer 2: 100% Acetonitrile (ACN).
- 10 • Trypsin digestion buffer: Use freshly prepared 50 mM TEAB in LC/MS-  
11 grade H<sub>2</sub>O for SILAC or 50 mM HEPES pH 8.5 in LC/MS-grade H<sub>2</sub>O for  
12 TMT.
- 13 • SP3 elution buffer: 2% (vol/vol) DMSO in LC/MS-grade H<sub>2</sub>O for SILAC or  
14 50 mM HEPES pH 8.5 in LC/MS-grade H<sub>2</sub>O for TMT. Prepare immediately  
15 before use.
- 16 • Mass spectrometry loading buffer: Prepare 5% (vol/vol) DMSO and 5%  
17 (vol/vol) formic acid in LC/MS-grade H<sub>2</sub>O. Keep at 4 °C for one week.

18

19 **SP3 purification bead stock preparation:**

- 20 1. Remove bottle of SP3 purification beads from fridge and keep it at room  
21 temperature for 10 minutes.
- 22 2. Mix 40 µL of bead slurry with 160 µL of water (LC/MS grade).
- 23 3. Place tube on a magnetic rack and let the beads settle for 2 minutes.
- 24 Once beads are fully collected, remove and discard supernatant.

- 1 4. Resuspend the beads in 200  $\mu$ L of water (LC/MS grade), collect the  
2 beads with a magnet and discard the supernatant. Repeat this step  
3 twice.
- 4 5. Store SP3 purification beads (10  $\mu$ g/ $\mu$ L) in 200  $\mu$ L of water at 4 °C. This  
5 stock suffices for up to twenty samples and can be stored for up to one  
6 month.

7

## 8 **PROCEDURE**

9 CRITICAL If you are using SILAC-based proteomics start at step 1, otherwise  
10 go to step 4.

### 11 **Incorporation of labelled amino acids in adherent or suspension cells**

12 **Timing: 14 days.**

13 1. Grow three separate populations of cells for 5-6 passages in SILAC  
14 media. Each of the three cell populations should be maintained in media  
15 lacking arginine and lysine, supplemented with 10% (vol/vol) dialyzed FBS  
16 and one set of isotopic labelled arginine and lysine (i.e. light, medium or  
17 heavy amino acids, as described in 'Cell culture and SILAC reagent setup').

18 CRITICAL STEP: Make sure you do not switch cells from a given isotopic  
19 amino acid combination to another e.g. cells growing with heavy arginine and  
20 lysine must always be maintained with these heavy amino acids.

21 2. Seed one 6 cm dish with each cell population (i.e. incubated with light,  
22 medium or heavy amino acids) and keep them in their respective media  
23 overnight at 37 °C and 5% CO<sub>2</sub>. Lyse the cells with 500  $\mu$ L of RIPA buffer  
24 supplemented with protease inhibitors and confirm isotope incorporation by  
25 proteomics as in<sup>62,63</sup>.

1 TROUBLESHOOTING.

2 CRITICAL STEP: It is required a high incorporation rate (optimally >98%) to  
3 continue with the experiment.

4 3. Freeze aliquots of each SILAC-labeled cell population with their  
5 respective SILAC medium supplemented with 20% (vol/vol) dialyzed FBS  
6 and 10% (vol/vol) DMSO. It is possible to initiate any comparative RIC/eRIC  
7 experiment from these frozen cell stocks starting from step 4.

8 PAUSE POINT. Cells can be stored indefinitely in liquid nitrogen.

9

#### 10 **Cell preparation for eRIC. Timing 1-2 days.**

11 For adherent cells follow option A and for suspension cells follow option B.

12 Seeding densities for HeLa and Jurkat cells are provided as a reference.

13 CRITICAL STEP: If using SILAC, labels should be permuted between  
14 conditions in different biological replicates to correct for incidental unlabeled  
15 contaminants (e.g. keratins from skin) and potential isotope-driven effects.

16 4.

17 A. Adherent cells

18 i. Seed 1 x 500 cm<sup>2</sup> dish per condition with  $\sim 1.1 \times 10^7$  HeLa  
19 cells (or 3 x 150 mm dishes per condition with  $3 \times 10^6$  cells  
20 per dish). If using SILAC you must assign one label to each  
21 condition at this stage (e.g. condition A> light; condition B>  
22 medium; condition C> heavy). Incubate the cells at 37 °C and  
23 5% CO<sub>2</sub> until 80% confluent (usually 1-2 days) and apply the  
24 desired physiological, pathological or pharmacological  
25 treatment. TROUBLESHOOTING

1           B. Suspension cells

- 2           i. Seed 3 x 175 cm<sup>2</sup> flasks per condition with Jurkat cells at a  
3           density of  $\sim 0.5 \times 10^6$  cells/mL. If using SILAC you must  
4           assign one label to each condition. Incubate cells in a  
5           humidified incubator at 37 °C and 5% CO<sub>2</sub> until reaching a  
6           density of 1-1.5 x 10<sup>6</sup> cells/mL (typically 1-2 days, with 30-45  
7           x 10<sup>6</sup> cells/175 cm<sup>2</sup> flask) and apply the desired  
8           physiological, pathological or pharmacological treatment.

9 TROUBLESHOOTING

10

11 **UV irradiation and cell lysis. Timing: 1-2 h**

- 12           5. See Option A if working with adherent cells and Option B if working with  
13           suspension cells.

14           A Adherent cells

- 15           i. Aspirate carefully the culture media of one dish and wash  
16           twice with 15 mL of ice-cold PBS. After the second wash tilt  
17           the plate on ice for a few seconds to collect remaining PBS  
18           and remove it by aspiration. Proceed quickly to the next step.
- 19           ii. Remove the lid of the dish and place the dish inside the  
20           crosslinker in an appropriate ice chamber at 15-30 cm from  
21           the UV source. Irradiate with the dish on ice with 150 mJ/cm<sup>2</sup>  
22           of 254 nm UV light. Proceed quickly to the next step.
- 23           iii. Add 10 mL of ice-cold lysis buffer supplemented with protease  
24           inhibitors to each plate and harvest the cells with a cell

1 scraper. Transfer the lysate to a 50 mL conic tube and place  
2 it on ice.

#### 3 4 B Suspension cells

5 i. Ensure that cells are monodispersed by pipetting multiple times  
6 using a 25 mL pipette. Take an aliquot and test viability (e.g. with  
7 trypan blue).

8 CRITICAL STEP: only proceed if cells show high viability (optimally  
9 >90%).

10 ii. Collect  $100\text{-}130 \times 10^6$  living cells by centrifugation at  $400 \times g$  for  
11 5 min at  $4^\circ\text{C}$ . Resuspend in 30 mL of ice-cold PBS and split into  
12 two 150 mm uncoated petri dishes with no lids. Proceed quickly to  
13 the next step.

14 CRITICAL STEP: Use uncoated petri dishes to avoid cells attaching  
15 to the surface. If cells attach to the uncoated surface, use dishes  
16 with low cell binding surfaces instead (e.g. HydroCell, Nunc).

17 iii. Deposit the petri dishes containing the cells on an ice-cooled metal  
18 block and place inside the crosslinker at 15-30 cm from the UV  
19 source. Irradiate with  $150 \text{ mJ/cm}^2$  of 254 nm UV light. Proceed  
20 quickly to the next step.

21 iv. Transfer the cell suspension from the petri dishes to a pre-cooled  
22 50 mL conical centrifuge tube and keep on ice. Tilt the dishes on  
23 ice for 30 seconds and collect the remaining cell suspension  
24 accumulated on the bottom. Combine with the rest in the 50 mL  
25 tube and keep on ice.

1 CRITICAL STEP. Check the dishes with a brightfield microscope. If  
2 a large number of cells remains on the dish surface, add 10 mL ice-  
3 cold PBS and pipet up and down to recover them. Combine with  
4 the rest of the suspension. Repeat if necessary.

5 v. Pellet the cells at  $400 \times g$  for 5 min at  $4^\circ\text{C}$ . Working on ice, discard  
6 the supernatant and lyse immediately after with 10 mL of ice-cold  
7 lysis buffer supplemented with protease inhibitors. Keep on ice.

8

9 CRITICAL STEP: We recommend applying a  $300 \text{ mJ/cm}^2$  program to the  
10 crosslinker immediately before irradiating the cells. This will warm up the bulbs  
11 and make UV irradiation cycles more homogeneous. UV crosslinkers typically  
12 have a sensor in the bottom-deep part of the chamber. Make sure the ice  
13 chamber or metal block does not occlude the sensor.  $150 \text{ mJ/cm}^2$  UV irradiation  
14 typically takes from 30 to 60s. If the irradiation takes longer, make sure the UV  
15 sensor is not occluded and all the bulbs are in working order.

16 6. Repeat step 5 with the rest of the dishes/conditions until all samples  
17 are processed.

18

19 **Lysate homogenization. Timing: 60 min**

20 7. Working on ice, homogenize the lysate to shear genomic DNA and  
21 any remaining cellular structures. Do so by passing each sample 3  
22 times through a 5 mL syringe with a 22-Gauge (0.7 mm diameter)  
23 needle. As the volume of the lysate is larger than 5 mL, transfer the  
24 lysate from one 50 mL tube to a new one stepwise.

1 CAUTION: During the homogenization steps, extra care needs to be taken  
2 while working with syringes and needles in order to avoid injuries. We  
3 recommend the use of blunt needles and syringes with Luer-Lock. Additionally,  
4 extra care is recommended to avoid spillage, particularly, when removing the  
5 plunger from a syringe.

6 CRITICAL STEP: Efficient homogenization is critical for successful RIC  
7 experiments. As the strength required to pass the lysate through the needle relies  
8 on the plunger area, syringes bigger than 5 mL are not recommended. To obtain  
9 optimal homogenization, apply as much pressure as possible on the syringe's  
10 plunger, releasing the lysate against the wall of the 50 mL tube to avoid the  
11 generation of foam. When almost all the lysate has passed through the needle,  
12 reduce pressure as this also prevents the generation of foam. Apply all these  
13 considerations to the next step.

14

15 8. Repeat step 7 with a 27-Gauge needle (0.4 mm diameter) until the  
16 lysate has lost its viscosity, which typically takes three or more  
17 homogenization cycles with the 27-Gauge needle.

18 TROUBLESHOOTING

19 9. Either snap freeze the samples in liquid nitrogen and store at  $-80^{\circ}\text{C}$   
20 or proceed directly to step 11.

21 PAUSE POINT: Samples can be stored at  $-80^{\circ}\text{C}$  for up to one month. We  
22 recommend avoiding repeated freeze thaw cycles.

23 CRITICAL STEP: If using SILAC, you can stop at this stage until all the  
24 biological replicates are collected. As the different conditions from each  
25 replicate will be combined, the number of tubes will thus be reduced (i.e. 1 x

1 50 mL tube per replicate). Hence, it is feasible to proceed with all 3 replicates  
2 in parallel. This parallel processing of replicates will notably reduce technical  
3 variation and subsequent batch effects.

4

5 **RNP capture. Timing: 2-4 hs.**

6 10. Thaw samples in a 37 °C water bath and continue to the next step  
7 immediately after defrosting.

8 11. (optional) Incubate samples at 60 °C for 15 min, quickly cool down on  
9 ice and centrifuge at 16000 × g for 5 min and 4 °C to remove any  
10 insoluble material. Transfer supernatant to a fresh 50 mL low-binding  
11 conical centrifuge tube. NOTE: This step is particularly recommended  
12 when lysates look turbid and/or gDNA/protein contaminants had been  
13 detected in the eluates of a previous eRIC experiment. If none of  
14 these apply to your samples, you can omit this step.

15 **TROUBLESHOOTING**

16 **CRITICAL STEP:** Incubate simultaneously 1 mL of lysis buffer at 60 °C for 15 min  
17 for use in protein quantification in step 13.

18 12. Take 2% of the volume of each sample as 'input' control and store at  
19 -80 °C.

20 13. Estimate protein concentration of each sample using an ionic  
21 detergent compatible commercial kit and following manufacturer's  
22 recommendations.

23 **CRITICAL STEP:** Not all protein assays are compatible with the ionic detergent  
24 and DTT concentration contained in the lysis buffer. We recommend Pierce  
25 660nm Protein Assay supplemented with Ionic Detergent Compatibility Reagent



1 (IDCR) (Thermo Fisher Scientific). Importantly, prepare the protein standard in  
2 the same lysis buffer to correctly calibrate the assay. If step 11 was performed,  
3 use an aliquot of lysis buffer incubated at 60 °C for 15 min as blank and to dilute  
4 the protein standard, as DTT influences protein quantification and is unstable at  
5 high temperatures.

6 14. If optional step 11 was applied, supplement the lysate with 5 mM DTT  
7 from 1 M stock to compensate for DTT loss.

8 15. If using SILAC see A, if using other proteomic approach (e.g. TMT)  
9 go to B.

10 A. SILAC

11 i. Transfer the volume corresponding to an equal amount of protein  
12 from each sample into a single 50 mL tube to combine samples.  
13 Adjust the combined volume with lysis buffer to 10 mL per sample.  
14 CRITICAL STEP: Volumes indicated 'per sample' across the  
15 protocol will be multiplied by the number of SILAC samples  
16 combined in this step.

17 B. TMT (or other proteomic approaches)

18 i. Transfer the volume corresponding to an equal amount of protein  
19 of each sample into separate 15 mL tubes. Adjust the volume of  
20 each tube to 10 mL with lysis buffer.

21 CRITICAL STEP: The amount of protein used is determined by the sample with  
22 the lowest protein mass. For example, if sample A=10 mL at 1 mg/mL and  
23 sample B=10 mL at 2 mg/mL, 10 mg of protein will be used (corresponding to 10  
24 mL of A and 5 mL of B).

- 1           16. Add 300  $\mu$ L/sample of LNA2.T beads to the tube and mix by
- 2           pipetting up and down (e.g. use 900  $\mu$ L for SILAC if 3 samples were
- 3           combined).
- 4           17. Incubate for 30 min at 37 °C with gentle rotation.
- 5           18. Collect beads with a magnet in a thermostat cabinet at 37 °C. Wait
- 6           until the lysate is fully clarified. This should not take more than a few
- 7           min.
- 8           19. Transfer supernatant to a new tube (50 mL tube for SILAC and 15 mL
- 9           tube for TMT) and use it for the second round of capture (step 21).
- 10          20. Add 5 mL of ice-cold lysis buffer to the LNA2.T beads from step 18.
- 11          Keep them at 4 °C.
- 12          21. Repeat steps 16 to 18 for the second round of LNA2.T capture.
- 13          Proceed with the next steps simultaneously with the beads from the
- 14          first and second round of capture.
- 15          CRITICAL STEP: Once the protocol is successfully implemented for a given
- 16          cell type and thus the quality of the outcome of each round of capture is
- 17          known, the beads from the first and second capture can be combined here.
- 18          Bead combination reduces the number of tubes, which is especially
- 19          recommended if the experimental design includes numerous conditions. If the
- 20          beads are combined, double the volumes throughout the protocol from step
- 21          22.
- 22          22. After the second round of capture (step 21), collect the beads and
- 23          transfer supernatant to a new tube and store at -80 °C for quality
- 24          control purpose or proceed to a third capture cycle if required (see
- 25          ‘experimental design’). Discard the supernatant if none of these apply.

1 Resuspend the bead pellet from the first and second capture in 10  
2 mL/sample of lysis buffer at room temperature. Incubate for 5 min at  
3 37 °C with gentle rotation in a thermostat cabinet. Collect the beads  
4 using a magnet and discard the supernatant.

5 CRITICAL STEP. For this and the consecutive washes steps, it is essential  
6 that the beads are monodispersed and do not clump as this can promote the  
7 purification of contaminants. Resuspend the beads by pipetting up and down  
8 with a 5 mL pipette. If clumps are observed, resuspend in the following  
9 washes gently in 1 mL of the corresponding buffer using a p1000 micropipette  
10 with a low binding tip and then add the remaining volume of buffer. The  
11 narrower exit of the p1000 tip facilitates clump disruption.

12 23. Resuspend the beads with 10 mL/sample of buffer 1 (kept at room  
13 temperature) and incubate for 5 min at 37 °C with gentle rotation.  
14 Collect the beads on the magnet and discard the supernatant. Repeat  
15 this step once.

16 24. Resuspend the beads with 10 mL/sample of buffer 2 (kept at room  
17 temperature) and incubate for 5 min at 37 °C with gentle rotation.  
18 Collect the beads on the magnet and discard the supernatant. Repeat  
19 this step once.

20 25. Resuspend the beads with 10 mL/sample of buffer 3 (kept at room  
21 temperature) and incubate for 5 min at 37 °C with gentle rotation.  
22 Collect the beads on the magnet and discard the supernatant. Repeat  
23 this step once.

24 CRITICAL STEP. In the final wash, make sure that the supernatant has been  
25 completely removed.

1           26. For the pre-elution step, resuspend the beads in 220  $\mu$ L/sample of  
2           nuclease-free water and transfer to 1.5 mL low-binding tubes.  
3           Incubate in a thermal block at 40 °C and 800 rpm for 5 min.

4   CRITICAL STEP: The pre-elution step should reduce potential contamination  
5   with rRNA and gDNA without compromising poly(A) RNA capture when using  
6   LNA2.T probe. However, this step is not compatible with the commercial DNA  
7   oligo(dT) probe used in the original protocol<sup>3</sup>. Hence, if using commercial DNA  
8   oligo(dT) beads, skip this step.

9   TROUBLESHOOTING.

10           27. Transfer 20  $\mu$ L/sample of the bead suspension to a fresh 1.5 mL low-  
11           binding tube for RNA and DNA quality control analyses. Capture  
12           beads with a magnet and discard the supernatant (which contains  
13           eluted contaminants). Add 15  $\mu$ L of heat elution buffer and store on  
14           ice until step 33.

15

16   **RNase-based elution for protein analysis. Timing: 60-90 min**

17           28. Place the remaining sample from step 26 (200  $\mu$ L/sample upon  
18           removal of 20  $\mu$ l in step 27) on a magnet rack. Transfer supernatant  
19           (which contains eluted contaminants) to a new tube and keep it on  
20           ice.

21   CRITICAL STEP: We recommend keeping this supernatant when adapting the  
22   protocol to a new cell type or organism, especially if the yield of captured RNA  
23   is low, as it can be used for quality control purposes (see RNA and DNA  
24   analysis). No or minimal levels of mRNA should be detected in pre-eluates.

1 29. For RBP elution, resuspend beads in 150  $\mu\text{L}$ /sample of freshly  
2 prepared RNase solution (prepare according to the table below) and  
3 incubate for 30 min at 37  $^{\circ}\text{C}$  and 800 rpm.

4 <b>Component</b>	<b>For 150 <math>\mu\text{L}</math></b>	<b>For 450 <math>\mu\text{L}</math>*</b>
5 Water	133.65 $\mu\text{L}$	401 $\mu\text{L}$
6 10x RNase buffer	15 $\mu\text{L}$ (final: 1x)	45 $\mu\text{L}$
7 1M DTT	0.75 $\mu\text{L}$ (final: 5 mM)	2.25 $\mu\text{L}$
8 10 mg/mL RNase A	0.2 $\mu\text{L}$ (final: $\sim$ 100 U)	0.6 $\mu\text{L}$
9 RNase T1	0.5 $\mu\text{L}$ (final: $\sim$ 100 U)	0.5 $\mu\text{L}$

10 \*use if 3 SILAC samples were combined

11 **CRITICAL STEP:** During this incubation perform steps 33 and 34.

12 30. Collect the beads on a magnetic rack and transfer supernatant to a  
13 fresh 1.5 mL low-binding tube.

14 **CRITICAL STEP:** captured proteins are now in the supernatant.

15 31. Combine the supernatants of the first and second round of LNA2.T  
16 capture (see steps 22-25) if performing a proteomic experiment. Keep  
17 them separate if performing a pilot experiment.

18 32. Place samples from step 31 on a magnet to eliminate any remaining  
19 traces of beads. Transfer supernatant to a new 1.5 mL low-binding  
20 tube.

21 **PAUSE STEP:** Eluted proteins can be snap frozen in liquid nitrogen and stored  
22 at -80  $^{\circ}\text{C}$  indefinitely or be processed immediately (step 44).

23 **Heat elution for RNA/DNA analysis. Timing: 15 min**

24 33. Elute captured RNA from the aliquots taken in step 27 by incubating  
25 for 5 min at 95  $^{\circ}\text{C}$  and 800 rpm. Proceed immediately to next step,  
26 before samples cool down to prevent recapture of RNA.

1           34. Collect the beads with a magnet and quickly transfer supernatant to  
2           a new 1.5 mL low-binding tube. Place the sample again on a magnet  
3           to eliminate any remaining traces of beads and transfer the  
4           supernatant to a new low-binding 1.5 mL tube.

5   PAUSE STEP: Samples can be snap frozen in liquid nitrogen and stored at -80 °C  
6   for at least one month.

## 7   **Quality control analyses**

### 8   ***RNA and DNA analyses. Timing: 2d***

9   CRITICAL When adapting eRIC to a new biological model, we recommend to  
10   analyse RNA and DNA levels on eluates of each round of capture separately.

11           35. Isolate the total RNA from 50 µL of input (step 12) using TRIzol (follow  
12           the manufacturer's protocol).

13           36. Determine RNA concentration in samples from step 34 (eRIC heat  
14           eluates) and step 35 (purified input RNA) in a NanoDrop device.

### 15   ***Assessment of quality and purity of captured RNA by capillary*** 16   ***electrophoresis (bioanalyzer)***

17           37. Take 1 µL aliquots of heat eluates (Step 34) and of the purified RNA  
18           from inputs (Step 35) and adjust RNA concentration to 5 ng/µL with  
19           nuclease free water.

20           38. Run 5 ng (i.e. 1 µL) of each sample in a Bioanalyzer using the Agilent  
21           RNA 6000 Pico Kit following manufacturer's indications. See Fig. 4a  
22           for an example of the expected outcome.

23   TROUBLESHOOTING.

### 24   ***Assessment of poly(A) RNA enrichment and gDNA contamination by qPCR***

1 39. Mix 0.2-1  $\mu\text{g}$  of RNA from eRIC heat eluates (Step 34) and inputs  
 2 (Step 35) with TURBO DNase mixture (see below), and incubate for  
 3 30 min at 37 °C in a thermal block. eRIC eluates treated with TURBO  
 4 DNase will be used to measure RNA and will be then referred to as  
 5 eRIC-RNA. Treat identically and simultaneously an equal amount of  
 6 eRIC eluates but replacing the DNase by water. These samples will  
 7 be employed to estimate gDNA contamination and are thus referred  
 8 to as eRIC-gDNA. It is not required to perform this mock treatment  
 9 with input samples.

Component	Reaction	Mock reaction
RNA	0.2-1 $\mu\text{g}$	0.2-1 $\mu\text{g}$
10x TURBO DNase buffer	1 $\mu\text{L}$	1 $\mu\text{L}$
TURBO DNase	1 $\mu\text{L}$	-
Nuclease free water	up to 10 $\mu\text{L}$	up to 10 $\mu\text{L}$

15 40. Add 2  $\mu\text{L}$  of TURBO DNase Inactivation Reagent to eRIC-RNA,  
 16 eRIC-gDNA and input samples and proceed following manufacturer's  
 17 indications. CRITICAL STEP: The inactivation reagent is added to the  
 18 mock reactions to account for any bias it may introduce in the qPCR  
 19 reaction.  
 20 reaction.

21 41. Using random hexamers, reverse transcribe 5ul of the eRIC-RNA and  
 22 input samples from previous step. Include a no reverse transcriptase  
 23 (RT) control to assess the occurrence of gDNA contamination due to  
 24 an incomplete DNA digestion in step 39. Treat eRIC-gDNA samples

1 from previous step simultaneously and identically but replacing the  
2 RT enzyme by water.

3 42. Determine by qPCR the levels of *GAPDH* mRNA, *ACTB* mRNA, 18S  
4 rRNA and 28S rRNA in eRIC-RNA and inputs. Simultaneously, asses  
5 the degree of gDNA contamination in eRIC-gDNA samples using the  
6 same *GAPDH* and *ACTB* primers. Sequence of primers for human  
7 and mouse are provided in 'eRIC quality control reagents' (Table 2  
8 and 3). The qPCR set up is indicated below. The 'anticipated results'  
9 section described the expected outcomes of this analysis.

Component	Amount per reaction
SYBR Green PCR Master Mix	5 µL (final: 1X)
Sample diluted 1:50-1:100	5 µL
100 µM forward primer	0.05 µL (final: 0.5 µM)
100 µM reverse primer	0.05 µL (final: 0.5 µM)

16 Use the following thermal cycling parameters:  
17

Step 1	50 °C, 02:00 min
Step 2	95 °C, 10:00 min
Step 3	95 °C, 00:15 min
Step 4	60 °C, 01:00 min

18 Perform 40 cycles of steps 3 and 4.

19 43. If RNA/DNA quality controls are satisfactory, combine the RNase-  
20 treated eluates of each round of capture (step 32) to perform the  
21 protein analysis.



1 **Assessment of RBP capture: 2d**

2 44. Take the RNase-treated eluates from step 32. Adjust them to the  
3 same RNA concentration determined for heat eluates (step 36) and  
4 final volume using 1x RNase solution (see step 32). Use the sample  
5 with the lowest concentration as reference.

6 PAUSE STEP: Samples can be frozen at -20 °C indefinitely.

7

8 45. Analyze by SDS-PAGE followed by silver staining (Fig.4b) and  
9 Western blotting with antibodies against known RBPs (e.g. PTBP1)  
10 and negative controls (e.g. ACTB, histone H3). In addition to eluates,  
11 load 0.01-0.05% of inputs (step 12) for comparative purposes.  
12 Recommended sample amounts for these analyses are provided in  
13 Fig.1 and 4. Information of recommended antibodies is provided in  
14 Table 1.

15 CRITICAL STEP: proceed to the next steps only if protein, RNA and DNA quality  
16 controls are satisfactory.

17 TROUBLESHOOTING

18 **Proteomic analysis**

19 ***Sample concentration. Timing: 60 min***

20 46. Add 0.01 volumes of 10% (wt/vol) SDS to the eluates from Step 44  
21 for a final concentration of 0.1% (wt/vol) SDS.

22 47. Concentrate equal amounts of each sample using a SpeedVac at  
23 37 °C until a volume of ~100 µL is reached. We recommend  
24 performing the SILAC or TMT proteomic analysis with the amount of

1 RNase treated eluate equivalent to 15-30  $\mu\text{g}$  of RNA (inferred from  
2 the RNA quantification in step 36; Fig. 1).

3 CRITICAL STEP: For the complementary total proteome analysis, use material  
4 from step 12. Required protein amount depends on mass spectrometry  
5 workflow and equipment, but we usually process up to 2  $\mu\text{g}$  for unfractionated  
6 samples per mass spec run. More material is usually required if fractionation is  
7 applied (20  $\mu\text{g}$  per 10 fractions).

8 CRITICAL STEP: If the experiment leads to larger quantities of RNA than those  
9 indicated above, material excess can be used to perform additional quality control  
10 experiments or for validation of candidates from the proteomic approach (see  
11 below by Western blotting as in in step 45).

12 CRITICAL STEP. Avoid concentrating the samples to volumes lower than  
13 50  $\mu\text{L}$  as RBPs can precipitate. If this occurs, supplement the samples with  
14 water to reach 100  $\mu\text{L}$  and incubate at 37  $^{\circ}\text{C}$  until precipitate dissolves.

15 PAUSE POINT. Samples can be snap frozen in liquid nitrogen and store  
16 at -80  $^{\circ}\text{C}$ .

17

18 ***SP3 sample purification. Timing: 3 hours***

19

20 48. *Sample clean up (Steps 48-57)*. Add 2  $\mu\text{L}$  of 500 mM TCEP (final  
21 concentration 10 mM) to the 100  $\mu\text{L}$  of sample from step 47 to disrupt  
22 disulfide bonds. Mix by pipetting and incubate at RT for 30 min.

23 49. Add 10.2  $\mu\text{L}$  of 500 mM CAA to alkylate the sulfhydryl groups and  
24 prevent re-formation of the disulfide bridges. Mix by pipetting and  
25 incubate in the dark at RT for 30 min.

- 1           50. Add 10  $\mu$ L of SP3 purification beads (see “SP3 purification bead stock  
2           preparation”) to each sample.
- 3           51. Add 409.1  $\mu$ L of 100% ACN to obtain a final percentage of 77%  
4           (vol/vol) ACN. Incubate for 30 min at RT.
- 5           52. Collect the beads with a magnet and wait until the supernatant is  
6           clear. At this stage, proteins are bound to the SP3 purification beads.  
7           You can either keep the supernatant for quality control purpose or  
8           discard it if the protocol has already been implemented successfully.
- 9           53. Keep the tubes on the magnetic rack and add 1 mL of 70% (vol/vol)  
10          EtOH [Wash buffer 1]. Incubate for 30 seconds and discard the  
11          supernatant. Do not resuspend the beads or take the tube off the  
12          magnet.
- 13          54. Keeping the tubes on the magnet, add 1 mL of 70% (vol/vol) EtOH  
14          and incubate for 30 seconds on the magnetic rack. Remove and  
15          discard supernatant.
- 16          55. Keeping the tubes on the magnetic rack, add 1 mL of 100% ACN  
17          [Wash buffer 2] and incubate for 15 seconds on the magnetic rack.  
18          Remove and discard the supernatant.
- 19          56. Repeat steps 53-55 seven times.
- 20    CRITICAL STEP: It is crucial that at this step, samples are free of any residual  
21    detergent, which will negatively affect the nanoflow HPLC system performance  
22    and consequentially protein identification.
- 23          57. Remove any residual ACN. Take the tubes with the beads off the  
24          magnetic rack and proceed immediately to the next step.
- 25    ***Trypsin-digestion and peptide elution:*** Timing: 15-17 hours

1           58. Resuspend the SP3 purification beads in 50  $\mu$ L (SILAC) or 10  $\mu$ L  
2           (TMT) of Trypsin digestion buffer. Avoid excessive pipetting of the  
3           beads as they can stick to the tips, causing protein loss.

4   CRITICAL STEP: Avoid TEAB when using TMT as primary amines of TEAB can  
5   quench TMT peptide labelling (see Trypsin digestion buffer in 'Reagent setup').

6           59. Add 250 ng of sequencing grade trypsin to each sample and incubate  
7           in a thermal block at 37  $^{\circ}$ C and 400 rpm, overnight (~14 hours).

8           60. Collect the beads with a magnet and transfer the supernatant  
9           containing the tryptic peptides to a new tube (this is referred to as SP3  
10          eluate 1).

11          61. Take the tube off the magnetic rack, re-suspend the beads with 1 mL  
12          100% ACN, and incubate 5 min at RT. Collect beads with magnet and  
13          discard the supernatant.

14          62. Resuspend the beads in 20  $\mu$ L of SP3 elution buffer. Incubate for 5  
15          min at RT.

16   CRITICAL STEP: The composition of the SP3 elution buffer for SILAC or TMT  
17   approach is different (See 'Reagent setup').

18          63. Collect beads with a magnet making sure the solution becomes clear,  
19          carefully collect the supernatant (referred to as SP3 eluate 2), without  
20          disturbing the bead pellet, and combine with SP3 eluate 1 (step 60).  
21          Mix gently by pipetting up and down. If using TMT, proceed to step  
22          64. If using SILAC (or a label-free approach) proceed directly to step  
23          70 if fractionation is required or to 72 if it is not required.

24   ***TMT labelling.*** Timing: 2 hours

1 64. Select the kit required for your experimental design based on the  
2 number of conditions and replicates: i.e. Duplex TMT, Sixplex TMT,  
3 TMT10plex, TMT11plex or TMTpro 16plex for up to 2, 6, 10, 11 or 16  
4 samples, respectively. While we have not tested TMTpro 16plex with  
5 this protocol yet, we do not anticipate any incompatibility. Although  
6 the process is explained in detail in the manufacturer's manual, we  
7 describe it here in the context of our experimental design.

8 65. Dissolve 0.8 mg of each TMT label in 42  $\mu$ L 100% ACN. One unique  
9 label will be used for each sample.

10 66. Add 4  $\mu$ L of label solution to each sample and incubate for 1 hour at  
11 RT.

12 67. Terminate the reaction by adding 5% (wt/vol) hydroxylamine for 15  
13 min at RT.

14 68. Combine equal amounts of each sample.

15 69. Clean up the peptides with an OASIS HLB  $\mu$ Elution Plate following  
16 manufacturer's indications.

17 **Sample fractionation.** Timing: 2 hours

18 CRITICAL: If using TMT or samples with high dynamic range between nuclear  
19 and cytoplasmic proteins (e.g. T lymphocytes), we strongly recommend  
20 fractionation.

21 70. Dry the sample completely by vacuum centrifugation. Reconstitute in  
22 20  $\mu$ L of 20 mM ammonium formate pH 10.0.

23 71. Fractionate samples into 5-6 fractions. We typically perform an offline  
24 high pH reverse phase fractionation on an Agilent 1200 Infinity high-  
25 performance liquid chromatography system, equipped with a Gemini

1 C18 column (3  $\mu\text{m}$ , 110  $\text{\AA}$ , 100  $\times$  1.0 mm<sup>2</sup>, Phenomenex) or in  
2 StageTips<sup>54</sup>.

3 CRITICAL STEP: These parameters are provided for guidance and other  
4 fractionation regimens or approaches can be used. We do not recommend  
5 fractionation at the protein level using SDS-PAGE, as RBPs tend to concentrate  
6 at 220-100 KDa and 75-50 KDa, resulting in poor protein spread across fractions.  
7 We thus recommend fractionation at peptide level using high pH reversed-phase  
8 chromatography <sup>54</sup>, isoelectric focusing <sup>56</sup> or ion exchange <sup>55</sup> .

9 **Peptide identification and quantification by LC-MS.** 1 day.

10 72. Dry the sample by vacuum centrifugation. Reconstitute in 20  $\mu\text{L}$  of  
11 loading buffer (5% (vol/vol) DMSO and 5% (vol/vol) formic acid).

12 73. We recommend performing a pilot run with 10% of sample to estimate  
13 the volume needed for maximum protein identification without  
14 overloading the nanoflow HPLC system. This can be estimated based  
15 on overflow of the sample peptides to the subsequent blank run with  
16 digested BSA (see 'Experimental Design').

17 74. Based on the results from the pilot run, inject the optimal volume into  
18 the LC-MS and separate the digested peptide using a typical gradient  
19 for the available mass spectrometry instrumentation.

20 **Data analysis.** Timing: 1 week

21 CRITICAL Data analysis can be performed on multiple platforms, including  
22 MaxQuant<sup>57</sup>, R packages or Perseus. Here we describe the workflow based on  
23 the R package LIMMA but the workflow will be similar using other tools. An R  
24 markdown file, including the code developed to perform analysis for a SILAC

1 labelled experiment<sup>15</sup>, is provided as Supplementary Software and  
2 Supplementary Note.

3       75. Analyze the raw data with software based on database searching that  
4       also performs intensity-based quantitation. We used MaxQuant<sup>57</sup>  
5       (version 1.6.3.4). Define the search database (in our case Uniprot,  
6       Human, Organism ID 9606, downloaded on 16/01/13). Define the  
7       search parameters: trypsin as protease with full tryptic specificity and  
8       a maximum of two missed cleavage sites, carbamidomethyl (C) as a  
9       fixed modification, and acetylation (protein N-term, i.e. only the amino  
10      terminus of the protein) and oxidation (M) as variable modifications.  
11      All other parameters were used as default. By default, MaxQuant will  
12      filter the results with a 1% FDR at both the PSM (peptide to spectrum  
13      match) and protein level. If working with multiple fractions per sample,  
14      define fraction number in the fraction column before using the 'match  
15      between runs' option. For SILAC-based analyses set up the SILAC  
16      labels in the 'group specific parameters' tab using the multiplicity  
17      option. For isobaric labelling, navigate to the 'Group-specific  
18      parameters' tab and select 'Reporter ion MS2' from the 'Type' drop  
19      down menu. Then select appropriate kit (e.g. TMT10plex). Consult  
20      reference<sup>57</sup> for more details.

21      76. Extract the intensities for each peptide from the resulting  
22      modificationSpecificPeptide.txt file as in<sup>15,32</sup>.

1           77. Add the list of reference protein sequences in FASTA format in  
2           'Global parameter-sequence'. Use uniquely mapped peptides and  
3           summarize the ion count for each individual sample.

4           78. Perform multidimensional scaling to determine closeness of samples  
5           in an unbiased way e.g. plotMDS in LIMMA. Biological samples within  
6           the treatment condition should cluster together. Clustering will help to  
7           identify technical problems including batch effects and labelling  
8           biases.

9           79. Optional: If a batch effect is detected (Fig. 5a-b), we recommend  
10          applying a 'batch correction' to the data. This can be incorporated in  
11          the R package LIMMA with an appropriate design matrix before linear  
12          modeling.

13   CRITICAL STEP: A batch effect can be detected because samples cluster not  
14   because of the treatment, but due to a technical reason, such as differences  
15   between replicates, independent mass spectrometry runs, or labelling  
16   performance (Fig. 5a-b). As with any data manipulation, batch effect removal can  
17   distort data, hence should be applied only if a clear batch effect is detected by  
18   principal component analysis. In our experience, the SILAC light label can  
19   introduce batch effects in some instances as exogenous contaminants (e.g.  
20   keratins) and unlabeled peptides will only be present in the light channel. This  
21   potential bias is minimized by the permutation of the SILAC labels but, if  
22   problematic, it can easily be removed by applying the batch effect correction to  
23   the SILAC labels.

24          80. Transform the protein intensities into log<sub>2</sub> scale.



1 81. Using at least 3 biological replicates, use LIMMA to test whether the  
2 fold changes between conditions are different from 'zero' using a  
3 moderated t-test.

4 82. Correct the p-values for multiple testing by the Benjamini-Hochberg  
5 procedure. Use 1% and 10% FDR proteins to define 'high-confidence'  
6 and 'candidate' responsive RBPs. We have recently shown that a  
7 large proportion of the 10% FDR responsive RBPs are truly regulated  
8 by the cue (in this case, by virus infection)<sup>15</sup>. Nevertheless, we  
9 recommend orthogonal validation experiments when working with  
10 'candidate' responsive RBPs.

11 83. Optional: Proteins that are not detected in all conditions or replicates  
12 can lead to 'zero' or 'infinite' ratios, eliminating these proteins  
13 effectively from the statistical analysis. As these proteins can  
14 represent biologically important on/off and off/on states, we used a  
15 semi-quantitative analysis that considers the replicability of these  
16 'zero' and presence of intensity signal in control and treatment <sup>10,15</sup>,  
17 as implemented in the R markdown provided in the Supplementary  
18 Software and Supplementary Note. Alternatively, imputation  
19 methods<sup>59</sup> that add a value to each 'zero' can be used. The  
20 advantages and disadvantages of each option are described in the  
21 'experimental design'.

22 **CRITICAL STEP:** The comparison between UV-irradiated and non-irradiated  
23 samples is used to discover the repertoire of RBPs present in a given biological  
24 system. However, to study the RBP responses it is critical to avoid normalization

1 against non-irradiated samples as signal in these samples is low and noisy and  
 2 creates artificial distortions of the data when used as normalizer.

3 84.Optional: If complementary proteomic analysis of the input was  
 4 performed, process the sample as described in Step 47-83 for  
 5 eluates. Then subtract the log2 fold intensity of the input from the log2  
 6 fold intensity of the eluate to estimate eluate/input ratios.

7

## 8 TROUBLESHOOTING

9 Troubleshooting advice can be found in Table 4.

10 Table 4. Troubleshooting table.

Step	Problem	Possible reasons	Solutions
2	Incomplete peptide labelling	SILAC incorporation not sufficient	Incubate cells longer in SILAC media. If the cells do not tolerate SILAC reagents, switch to TMT or other quantitative method.
7,8	Viscous lysate	Incomplete shearing of Chromatin	Apply more pressure when passing lysate through needle. Repeat homogenization cycles or explore other homogenization strategies <sup>5,10</sup> ; e.g. TissueLyser (Qiagen).
		Too high protein concentration in lysates	Increase lysis volume until lysate reaches a watery consistency.

38, 42, 45	High contamination with rRNA, gDNA and/or protein	Viscous lysate/Incomplete shearing of chromatin  Presence of insoluble chromatin and /or cellular debris  Unsatisfactory pre-elution	See “Viscous lysate” in troubleshooting.  If skipped, implement optional Step 11.  Increase length and/or temperature of pre-elution step, controlling in parallel for poly(A) RNA lost.
38, 42	RNA degradation	Residual RNase activity in the lysate          Excessive UV irradiation	Add RNasin (Promega, N2511) or RNase inhibitors e.g. ribonucleoside vanadyl complex (NEB, S1402S) to the lysis buffer. Note that ribonucleoside vanadyl complexes are incompatible with EDTA. Hence, when working with this RNase inhibitor prepare a lysis buffer without EDTA. Following wash buffers can contain EDTA.  Decrease temperature to 4 °C during capture and the first two washes. Remaining washes can be performed at 37 °C due to RNase dilution during previous washes.  If eRIC captures substantially more RNA in non-irradiated than UV

			irradiated samples, further optimize the UV dosage. Make sure the UV sensor is not occluded, which would lead to UV overdose.
38, 42, 45	Low RNA and protein yield in eluates	Low poly(A) RNA levels per cell  Insufficient capture  RNA degradation	Increase starting material (number of cells).  Increase the length of the capture step, reduce hybridization and/or pre-elution temperature. Increase the number of LNA2.T capture cycles (typically from 2 to 3) and/or the amount of beads to ensure full depletion of poly(A) RNA.  See “RNA degradation” in troubleshooting.
45, 74	Low protein recovery	Insufficient cross-linking	Replace UV bulbs, optimize UV irradiation dose, in particular, for thicker samples or samples containing UV-absorbing pigments.
82-83	High level of infinite and zero protein ratios in	Proteins with low abundance are not identified in all samples	Use more material if MS has not reached saturation. Perform mass spectrometry on a more sensitive

	the proteomic analysis		<p>mass spectrometer or use more fractions to gain better coverage.</p> <p>If the 'zeros' follow a pattern that resembles a biological regulation (i.e. on/off or off/on states), use a semiquantitative approach or apply suitable data imputation to the dataset.</p>
82	Few significant proteins or protein responses due to high variability	Batch effect, sample collection or mass spectrometry run	<p>Perform multidimensional scaling analysis to identify the dominant factor of the batch effect. Employ batch correction algorithms to eliminate batch effects, for example by implementing an appropriate design matrix in the LIMMA package before linear modelling. If an experiment is technically inferior due to substantially lower identification and quantification rate (batch effect due to the mass spec run), we recommend first use batch correction and if this does not help, substitute the replicate.</p>

1

2 **TIMING**

3 **Coupling of the LNA2.T probe to beads, 8 h**

4 **Comparative eRIC analysis**

- 1 (Optional) SILAC labelling Step 1-3, 14 days
- 2 Cell preparation for RIC: Step 4, 1-2 days
- 3 UV irradiation and cell lysis: Step 5-6, 1-2 h
- 4 Lysate homogenization: Step 7-9, 1 h
- 5 RNP capture: Step 10-26, 2-4 h
- 6 RNase based elution: Step 28-32, 60-90 min
- 7 Heat based elution: Step 27, 33-34, 15 min
- 8 **Quality control analyses**
- 9 RNA and DNA analysis: 35-43, 2 days
- 10 Assessment of RBP capture: Step 44-45, 2 days
- 11 **Proteomic analysis**
- 12 Sample concentration: Step 46-47, 60 min
- 13 Sample preparation by SP3: Step 48-57, 3 h
- 14 Trypsin digestion and peptide elution: Step 58-63, 15-17 h
- 15 (Optional) TMT labelling Step 64-69, 2 h
- 16 (Optional) Sample fractionation: Step 70-71, 2 h
- 17 Peptide identification and quantification by LC-MS: Step 72-74, 1 day
- 18 Data analysis: Step 75-84, 1 week

19

## 20 **ANTICIPATED RESULTS**

21

22 Initially, RIC was used to identify the RBPs that bind to poly(A) RNA in cells and  
23 organisms<sup>1,2,4,6,7,9-12,14,15,35,36</sup>. RBDmap was derived from RIC and applied to  
24 discover the protein regions that directly interact with RNA<sup>31,32</sup>. The recently  
25 developed eRIC protocol boosts RIC selectivity for poly(A) RNA by including  
26 locked nucleotides in the oligo(dT) probe<sup>14</sup>. We exploit here this improved RIC  
27 protocol in combination with quantitative proteomics and tailored data

1 analysis<sup>10,14,15</sup> to enable system-wide profiling of RBP dynamics in response to  
2 biological cues.

3 A critical aspect of RIC and eRIC is that the eluates should be strongly enriched  
4 in intact polyadenylated RNA. To assess whether poly(A) is predominant in  
5 eluates and is not degraded, we first use a Bioanalyzer with an RNA 6000 Pico  
6 Kit (Fig. 4a). In a successful eRIC experiment, the bioanalyzer profile should  
7 show a strong reduction in the rRNA peaks, especially for the 28S rRNA (~4,000  
8 nt), when compared to the inputs (Fig. 4a). Moreover, the eluate RNA profile  
9 should show a 'bulge' composed of RNAs with heterogeneous sizes (as expected  
10 for mRNAs) that peaks between 500-4,000 nt (Fig. 4a). RNA degradation is  
11 highlighted by a strong reduction of the 500-4,000 nt mRNA 'bulge' to smaller  
12 RNA fragments (50-500 nt) in eluates.

13 If eRIC enriches for intact poly(A) RNA based on the bioanalyzer profile, we then  
14 utilize RT-qPCR and qPCR for detailed characterization of the isolated RNA pool.  
15 We measure the levels of mRNAs (*GAPDH* and *ACTB*) and rRNAs (28S and  
16 18S) in inputs and eluates to quantitatively assess the degree of poly(A) RNA  
17 enrichment over non-polyadenylated RNA. We expect a 100- and 10-fold  
18 enrichment of mRNAs (e.g. *GAPDH* and *ACTB*) over 28S and 18S rRNA,  
19 respectively<sup>2,14</sup>. Moreover, if gDNA is depleted in eluates the Ct value in -RT  
20 samples should be null or at least 10 Ct higher than those observed in +RT  
21 samples<sup>2,14</sup>. To obtain a system-wide snapshot of the RNA content, inputs and  
22 eluates can further be analyzed by RNAseq. This analysis will reveal the relative  
23 abundance of each RNA biotype as well as each individual RNA species,  
24 providing further contextualization to the eRIC results<sup>2</sup>.

1 Once the quality of the isolated RNA has been controlled, it is critical to assess if  
2 RBPs have been co-purified efficiently. To test this, we first use silver staining  
3 due to its relatively high sensitivity. The eluates of a successful eRIC experiment  
4 should yield a complex protein pattern, while the lane corresponding to the non-  
5 irradiated control should remain clean (Fig. 4b). Moreover, the protein pattern in  
6 eluates should strongly differ from that in inputs, showing the enrichment of a  
7 specific subset of proteins. For comparative eRIC analyses, it is important to  
8 perform pilot experiments to test if the eluates display similar protein patterns and  
9 if individual differences can be spotted. Note that silver staining will only detect  
10 the most abundant proteins in eluates, which often play housekeeping roles.  
11 Hence, it is not expected to detect massive differences between conditions using  
12 silver staining (Fig. 4b)<sup>10,15</sup>. Therefore, the silver staining analysis is a time-  
13 efficient approach to assess the overall performance of eRIC in different  
14 experimental settings and can be used to instruct the design of a comparative  
15 eRIC experiment.

16 To further assess the selectivity of eRIC, we also employ Western blotting with  
17 antibodies against well-established RBPs (e.g. PTBP1 and/or HNRNPC) and  
18 negative controls (e.g. ACTB and histone H4). While both types of proteins should  
19 be detected in inputs, only bona fide RBPs should be present in eluates and their  
20 presence should be UV-dependent. Detection of non-RBPs such as ACTB in  
21 eRIC eluates is a clear indication that further optimization is required (see  
22 Troubleshooting).

23 Only if RNA and protein analyses support the successful  
24 implementation/adaptation of eRIC, it is recommended to proceed with the  
25 proteomic analysis. Analysis by proteomics of eRIC eluates typically yields 600-



1 1,000 proteins with the workflow and equipment described here. Only proteins  
2 within the UV-irradiated samples which are reproducibly enriched over the non-  
3 irradiated control should be considered as high-confidence RBPs. As a reference,  
4 we only classify proteins as RBPs if they are enriched in the eluates of  
5 UV-irradiated samples with 1% FDR. Several RBPomes have been established  
6 in different cell lines and species (collected in <sup>25</sup>). This super-dataset can be used  
7 as reference to quality control the proteomic results. In other words, an RBPome  
8 of excellent quality is expected to overlap heavily with previously established  
9 RBPomes from the same or closely related cell types. Moreover, both newly and  
10 previously established RBPomes are expected to be enriched in similar gene  
11 ontology (GO) terms and protein domains, which will indeed be dominated by  
12 RNA-related annotation and RNA-binding domains. For example, RNA  
13 recognition motif (RRM), K-homology domain (KH), and other RNA-binding  
14 domains, should rank amongst the most prevalent domains present in the  
15 RBPome<sup>1,2,31</sup>. By contrast, DNA-binding proteins should be underrepresented,  
16 even though specific DNA binders may be endowed with dual DNA/RNA-binding  
17 activity and will thus crosslink to RNA (e.g. HNRNPU, EDF1, SUB1). These  
18 enrichment analyses can be performed with freely available tools such as  
19 DAVID<sup>64</sup> (<https://david.ncifcrf.gov>) and AmiGO 2  
20 (<http://amigo.geneontology.org/amigo>) as well as dedicated R packages e.g.  
21 topGO (<https://doi.org/doi:10.18129/B9.bioc.topGO>).  
22 Comparative eRIC analysis will discover RBPs that associate with RNA  
23 differentially under distinct experimental conditions. The number of RBPs  
24 regulated by a given cue can vary depending on the strength of the stimulus and  
25 the depth of the proteomics analysis, ranging from a dozen to hundreds. We

1 typically classify these proteins as 'high confidence' or 'candidate' dynamic RBPs  
2 if passing the 1% or 10% FDR cut-off, respectively (Fig. 5c-d). To confirm that  
3 these proteins have differential RNA-binding properties under the selected  
4 experimental conditions, we repeat the RIC experiment and analyze few selected  
5 dynamic RBPs by Western blotting. Note that, for this validation approach the  
6 samples should be processed separately, as described in the TMT workflow.  
7 Applying this approach to SINV-infected cells, we validated the differential RNA-  
8 binding activity of 11 RBPs (both 1% and 10% FDR) out of 11 proteins tested,  
9 supporting the excellent correlation between proteomics and Western blot data<sup>15</sup>.  
10 Nevertheless, the abundance of some RBPs in eRIC eluates can be low, making  
11 their detection by Western blotting difficult. For these cases we recommend  
12 increasing the amount of sample loaded in the gel and employing ultra-sensitive  
13 enhanced chemiluminescent (ECL) reagents (e.g. SuperSignal West Femto  
14 Maximum Sensitivity Substrate, Thermo Fisher Scientific). In addition to these  
15 experiments, we recommend further validation with orthogonal methods such as  
16 polynucleotide kinase assay<sup>1,4,5</sup>, fluorescence-based assays<sup>2,31,65</sup>, RIP or CLIP  
17 combined with RT-qPCR, CLIPseq-based approaches or localization studies<sup>15</sup>.  
18 To assess the overall impact of protein abundance on eRIC results, we  
19 recommend analyzing the whole cell proteome by mass spectrometry (i.e. inputs)  
20 (Fig. 3 and 5e-f). By relating the levels of proteins in the inputs and eluates, it is  
21 possible to elucidate if the differential association of a given RBP with RNA  
22 correlates with matching changes in protein abundance (Fig. 5c vs e). In other  
23 words, if there is more protein, more protein is expected to be bound to RNA, and  
24 vice versa<sup>10,15</sup>. For example, protein abundance drives most of the alterations  
25 detected in the RBPome throughout fruit fly embryo development<sup>10</sup>; however, it

1 has minor impact in SINV-infected cells<sup>15</sup> (Fig. 5c vs e). Importantly, even under  
2 conditions where protein abundance drives the remodeling of the RBPome, it is  
3 possible to identify individual RBPs that are apparently regulated in an  
4 abundance-independent manner<sup>10</sup>. This analysis is the first step towards  
5 understanding how a given RBP responds to a biological cue.

6 Alterations in the activity of an RBP can also be triggered by changes in the  
7 availability of its RNA targets. Hence, we also recommend performing parallel  
8 RNAseq analysis of the inputs and/or eluates of the eRIC experiment. This  
9 analysis will reveal if the biological cue causes pervasive, subtle or no changes  
10 in RNA abundance. For example, we recently discovered that SINV infection  
11 causes a massive degradation of cellular mRNAs<sup>15</sup>. This phenomenon occurs in  
12 parallel with the emergence of the viral RNA, which becomes the dominant mRNA  
13 in the cell. Taken together, cellular RNA degradation and accumulation of viral  
14 RNA causes deep remodeling of the cellular RBPome. While virus infection has  
15 a global impact on RNA availability, other biological cues may cause more subtle  
16 differences. In such circumstances, it is possible to utilize RIP or CLIP (e.g.  
17 iCLIP<sup>66</sup>, PAR-CLIP<sup>67</sup>, eCLIP<sup>68</sup> and other variants) data to elucidate if the changes  
18 in activity of a given RBP can be explained by matching changes in its target  
19 RNAs. For this, it is already possible for many RBPs to use available data such  
20 as the eCLIP repository in ENCODE  
21 ([https://www.encodeproject.org/search/?type=Experiment&status=released&int  
22 ernal\\_tags=ENCORE&assay\\_title=eCLIP](https://www.encodeproject.org/search/?type=Experiment&status=released&internal_tags=ENCORE&assay_title=eCLIP))<sup>69</sup>

23 Other mechanisms may also contribute to RBP control. RBDs are strongly  
24 enriched in post-translational modifications (PTMs)<sup>31,70</sup>, suggesting that PTMs  
25 may regulate RNA binding. Therefore, the combination of comparative eRIC

1 studies with proteome-wide methods to profile PTMs can be very powerful to  
2 elucidate the contribution of PTMs to RBP function. Similarly, RBPs can  
3 assemble into different complexes in response to biological cues. For example,  
4 the glutamyl-prolyl tRNA synthase (EPRS) is released from the tRNA  
5 multisynthetase complex upon interferon  $\gamma$ -induced phosphorylation, and  
6 assembles with GAPDH, SYNCRIP and rpL13a forming the GAIT complex<sup>71</sup>. This  
7 newly formed complex regulates translation of specific pro-inflammatory mRNAs.  
8 It is thus plausible that differential protein complex assembly has a broader  
9 regulatory role of RBP activity than previously anticipated. Hence, protein-protein  
10 interaction analyses under the conditions of the eRIC experiment can shed light  
11 on the relevance of this regulatory mechanism in RBP function.

12 In summary, the comparative eRIC approach described here can be applied to  
13 virtually any eukaryotic system or experimental condition to discover RBPs with  
14 condition-specific regulatory roles. By expanding comparative eRIC studies, it will  
15 be possible to understand in greater detail how cells and, ultimately organisms,  
16 adapt to an ever-changing environment.

17

## 18 **ACKNOWLEDGMENTS**

19 We thank Mandy Rettel and Ni Shuai for fruitful discussions on sample  
20 preparation for mass spectrometry and data analysis, respectively. A.C. is funded  
21 by MRC Career Development Award MR/L019434/1, MRC grant MR/R021562/1,  
22 and John Fell Funds from the University of Oxford. W.K. is funded by the Marie  
23 Sklodowska-Curie fellowship DLV-842067.

24

## 25 **DATA AVAILABILITY**

1 Raw and processed proteomic data is deposited to the ProteomeXchange  
2 Consortium via the PRIDE partner repository with the dataset identifier  
3 PXD009789. Original data was generated in<sup>15</sup> and was re-analyzed here to  
4 illustrate the analytical workflow presented in Figure 3 and 5.

5

## 6 **CODE AVAILABILITY**

7 An R markdown file, including the code to perform analysis for a SILAC labelled  
8 experiment, is provided as Supplementary Software as rmd file and as  
9 Supplementary Note including exemplary output in pdf format.

10

## 11 **CONTRIBUTIONS**

12 J.I.P.-P., M.N., S.M., M.W.H. and A.C. conceived and designed the protocol.  
13 J.I.P.-P. and M.N. carried out the experimental work. M.N., W.K. C.E.L. and S.M.  
14 performed the proteomic analyses. J.I.P.-P., M.N., S.M., M.W.H., and A.C.  
15 performed the data analyses. J.I.P.-P., M.N., W.K., M.W.H. and A.C. wrote the  
16 manuscript with input from all authors.

17

## 18 **COMPETING INTERESTS**

19 We declare the authors have no competing interests as defined by Nature  
20 Research, or other interests that might be perceived to influence the  
21 interpretation of the article.

22

## 23 **FIGURE LEGENDS**

24 **Figure 1. Schematic representation of eRIC.** Cultured cells are exposed to UV  
25 light to generate covalent bonds (red dots) between RNA and proteins (green

1 lines) bound at 'zero distance'. Cells are then lysed under denaturing conditions  
2 and poly(A) RNAs with their associated proteins are captured using oligo(dT)  
3 probes modified with LNAs and coupled to magnetic beads. Extensive washes  
4 and a pre-elution in pure water are applied to eliminate contaminant proteins  
5 (black lines), as well as contaminating RNA and gDNA. After the pre-elution, the  
6 bead suspension containing the captured material is split into two aliquots, which  
7 are subjected to either heat or RNase-mediated elution. Heat- and RNase-eluted  
8 samples are used for RNA/DNA and protein analyses, respectively.

9

10 **Figure 2. Overview of the proteomic workflow.** Schematic representation of  
11 SILAC- (left) and TMT-based (right) comparative eRIC experiments. In the SILAC  
12 approach, proteins are labelled 'in cellulo' by incubation of cells with media  
13 containing isotopically distinct amino acids. Samples are mixed immediately after  
14 cell lysis, so eRIC and downstream sample preparation for proteomics is  
15 performed with the combined samples. In the TMT approach, peptide labelling is  
16 performed after eRIC elution. Hence, RBP isolation and sample preparation for  
17 proteomics are performed individually for each experimental condition.

18

19 **Figure 3. Assessment of relative RNA binding by total proteomics and RIC.**

20 **a)** Scatter plot comparing the protein intensities in the eluates of two replicates of  
21 a comparative RIC experiment. Two RBPs with similar abundance are highlighted  
22 (E2 in blue and nsP2 in red). **b)** as **(a)** but displaying the protein intensity of  
23 proteins detected in inputs (total cellular proteome). The two highlighted proteins  
24 show a strong difference in protein abundance. **c)** as **(a)** but displaying the

1 intensity ratio between RIC eluates and inputs. The comparison highlights that  
2 nsP2 displays stronger relative RNA binding than E2. WCL, whole cell lysate.

3

4 **Figure 4. eRIC quality controls.** Poly(A) RNA and associated RBPs were  
5 purified from proliferating human leukemia cells (Jurkat) with eRIC and analyzed  
6 as follows. **a)** Representative bioanalyzer profiles of RNA extracted from input  
7 material (top), eRIC pre-eluates (middle), and eRIC heat-eluted samples  
8 (bottom). rRNAs, tRNAs and small RNAs are predominant in inputs and still  
9 present in pre-eluates. eRIC heat-eluted samples display a strong enrichment of  
10 RNA species with a size range characteristic of mRNAs. Both 28S rRNA and the  
11 small RNAs are undetectable in the heat eluates, although a residual amount of  
12 18S rRNA is consistently observed. [FU] fluorescent units, [nt] length of RNA in  
13 number of nucleotides. **b)** eRIC was performed on Jurkat cells incubated for 6 h  
14 with 0.5 mM of the  $\alpha$ -ketoglutarate antagonist dimethylxalylglycine (DMOG) or  
15 vehicle (DMSO). Aliquots of the RNase-eluted samples and inputs were analyzed  
16 by SDS-PAGE and silver staining. Except for the RNase A and T1 bands (~15  
17 kDa), proteins are only detected in eRIC eluates if cells were UV-irradiated.  
18 Protein patterns in untreated and DMOG-treated samples are virtually  
19 indistinguishable, which agrees with the proteomic results that revealed a very  
20 limited RBP pool (61 proteins out of 721) responding to DMOG<sup>14</sup>.

21

22 **Figure 5. Statistical analysis of proteomic data. a)** Unbiased clustering of data  
23 using multidimensional scaling of 3 biological replicates (1-3) and 2 different  
24 conditions (Mock in black and Treatment [SINV virus infection] in red). In this  
25 case, the clustering of the RIC inputs (WCL) is based on the replicates, rather

1 than experimental conditions, suggesting that the dataset has a batch effect.  
2 Batch effects can potentially hide the underlying biological signal and we  
3 recommend investigating their cause e.g. assessing if the mean intensity  
4 between mass spectrometry runs differ. If the cause of the effect can be identified,  
5 a batch correction algorithm can be used after data acquisition. **b)**  
6 Multidimensional scaling as above. In this example, RIC eluates from control  
7 (mock) samples cluster together with a clear separation from the treated  
8 (infected) samples. No batch correction is necessary in this case. However, the  
9 RIC eluate from treated cells in the replicate 3 displays a differential signature  
10 when compared to the other 2 replicates. Detailed analysis of the proteomic data  
11 can help to elucidate whether this results from a technical problem (e.g. an error  
12 estimating the amount of protein prior to mixing the samples). **c)** Scatter plot  
13 displaying the treated/untreated protein ratios from two independent replicates. A  
14 good correlation between replicates indicates the high quality of the experiment.  
15 Every dot represents a protein and they are colored based on the statistical  
16 significance of the change between the two conditions (1%, 5% and 10% FDR).  
17 **d)** Volcano plot displaying the fold change and p value of the proteins in **(c)**. Every  
18 dot corresponds to a protein and they are colored based on the statistical  
19 significance of the change between the two conditions (1%, 5% and 10% FDR.  
20 **e)** as **(c)** but displaying the ratios in the whole cell lysate (input). No significant  
21 changes were observed during the time-course of the treatment, suggesting that  
22 the changes observed in eluates are not due to matching changes in protein  
23 abundance. Original data was generated in <sup>15</sup> and was re-analyzed here to  
24 illustrate the analytical workflow. Mock vs 18hpi with SINV infection of RIC data



1 is displayed in panel a, c and d. Panel b and e represents the matching input  
2 proteome.

3

#### 4 REFERENCES

5

6 1 Baltz, A. G. *et al.* The mRNA-bound proteome and its global occupancy  
7 profile on protein-coding transcripts. *Mol Cell* **46**, 674-690,  
8 doi:10.1016/j.molcel.2012.05.021 (2012).

9 2 Castello, A. *et al.* Insights into RNA biology from an atlas of mammalian  
10 mRNA-binding proteins. *Cell* **149**, 1393-1406,  
11 doi:10.1016/j.cell.2012.04.031 (2012).

12 3 Castello, A. *et al.* System-wide identification of RNA-binding proteins by  
13 interactome capture. *Nat Protoc* **8**, 491-500, doi:10.1038/nprot.2013.020  
14 (2013).

15 4 Kwon, S. C. *et al.* The RNA-binding protein repertoire of embryonic stem  
16 cells. *Nature structural & molecular biology* **20**, 1122-1130,  
17 doi:10.1038/nsmb.2638 (2013).

18 5 Beckmann, B. M. *et al.* The RNA-binding proteomes from yeast to man  
19 harbour conserved enigmRBPs. *Nat Commun* **6**, 10127,  
20 doi:10.1038/ncomms10127 (2015).

21 6 Liao, Y. *et al.* The Cardiomyocyte RNA-Binding Proteome: Links to  
22 Intermediary Metabolism and Heart Disease. *Cell Rep* **16**, 1456-1469,  
23 doi:10.1016/j.celrep.2016.06.084 (2016).

1 7 Liepelt, A. *et al.* Identification of RNA-binding Proteins in Macrophages by  
2 Interactome Capture. *Mol Cell Proteomics* **15**, 2699-2714,  
3 doi:10.1074/mcp.M115.056564 (2016).

4 8 Matia-Gonzalez, A. M., Laing, E. E. & Gerber, A. P. Conserved mRNA-  
5 binding proteomes in eukaryotic organisms. *Nature structural & molecular*  
6 *biology* **22**, 1027-1033, doi:10.1038/nsmb.3128 (2015).

7 9 Reichel, M. *et al.* In Planta Determination of the mRNA-Binding Proteome  
8 of Arabidopsis Etiolated Seedlings. *Plant Cell* **28**, 2435-2452,  
9 doi:10.1105/tpc.16.00562 (2016).

10 10 Sysoev, V. O. *et al.* Global changes of the RNA-bound proteome during  
11 the maternal-to-zygotic transition in Drosophila. *Nat Commun* **7**, 12128,  
12 doi:10.1038/ncomms12128 (2016).

13 11 Despic, V. *et al.* Dynamic RNA-protein interactions underlie the zebrafish  
14 maternal-to-zygotic transition. *Genome Res* **27**, 1184-1194,  
15 doi:10.1101/gr.215954.116 (2017).

16 12 Nandan, D. *et al.* Comprehensive Identification of mRNA-Binding Proteins  
17 of Leishmania donovani by Interactome Capture. *PLoS One* **12**,  
18 e0170068, doi:10.1371/journal.pone.0170068 (2017).

19 13 Bach-Pages, M. *et al.* Discovering the RNA-Binding Proteome of Plant  
20 Leaves with an Improved RNA Interactome Capture Method.  
21 *Biomolecules* **10**, 661, doi:10.3390/biom10040661 (2020).

22 14 Perez-Perri, J. I. *et al.* Discovery of RNA-binding proteins and  
23 characterization of their dynamic responses by enhanced RNA  
24 interactome capture. *Nat Commun* **9**, 4408, doi:10.1038/s41467-018-  
25 06557-8 (2018).

- 1 15 Garcia-Moreno, M. *et al.* System-wide Profiling of RNA-Binding Proteins  
2 Uncovers Key Regulators of Virus Infection. *Mol Cell* **74**, 196-211 e111,  
3 doi:10.1016/j.molcel.2019.01.017 (2019).
- 4 16 Rogell, B. *et al.* Specific RNP capture with antisense LNA/DNA mixmers.  
5 *RNA* **23**, 1290-1302, doi:10.1261/rna.060798.117 (2017).
- 6 17 Ong, S. E. & Mann, M. A practical recipe for stable isotope labeling by  
7 amino acids in cell culture (SILAC). *Nat Protoc* **1**, 2650-2660,  
8 doi:10.1038/nprot.2006.427 (2006).
- 9 18 Hughes, C. S. *et al.* Ultrasensitive proteome analysis using paramagnetic  
10 bead technology. *Mol Syst Biol* **10**, 757, doi:10.15252/msb.20145625  
11 (2014).
- 12 19 Hughes, C. S. *et al.* Single-pot, solid-phase-enhanced sample preparation  
13 for proteomics experiments. *Nat Protoc* **14**, 68-85, doi:10.1038/s41596-  
14 018-0082-x (2019).
- 15 20 Lukong, K. E., Chang, K. W., Khandjian, E. W. & Richard, S. RNA-binding  
16 proteins in human genetic disease. *Trends Genet* **24**, 416-425,  
17 doi:10.1016/j.tig.2008.05.004 (2008).
- 18 21 Castello, A., Fischer, B., Hentze, M. W. & Preiss, T. RNA-binding proteins  
19 in Mendelian disease. *Trends Genet* **29**, 318-327,  
20 doi:10.1016/j.tig.2013.01.004 (2013).
- 21 22 Moore, S., Jarvelin, A. I., Davis, I., Bond, G. L. & Castello, A. Expanding  
22 horizons: new roles for non-canonical RNA-binding proteins in cancer.  
23 *Curr Opin Genet Dev* **48**, 112-120, doi:10.1016/j.gde.2017.11.006 (2018).

- 1 23 Garcia-Moreno, M., Jarvelin, A. I. & Castello, A. Unconventional RNA-  
2 binding proteins step into the virus-host battlefield. *Wiley Interdiscip Rev*  
3 *RNA* **9**, e1498, doi:10.1002/wrna.1498 (2018).
- 4 24 Castello, A., Hentze, M. W. & Preiss, T. Metabolic Enzymes Enjoying New  
5 Partnerships as RNA-Binding Proteins. *Trends Endocrinol Metab* **26**, 746-  
6 757, doi:10.1016/j.tem.2015.09.012 (2015).
- 7 25 Hentze, M. W., Castello, A., Schwarzl, T. & Preiss, T. A brave new world  
8 of RNA-binding proteins. *Nat Rev Mol Cell Biol* **19**, 327-341,  
9 doi:10.1038/nrm.2017.130 (2018).
- 10 26 Horos, R. *et al.* The Small Non-coding Vault RNA1-1 Acts as a  
11 Riboregulator of Autophagy. *Cell* **176**, 1054-1067 e1012,  
12 doi:10.1016/j.cell.2019.01.030 (2019).
- 13 27 Choudhury, N. R. *et al.* RNA-binding activity of TRIM25 is mediated by its  
14 PRY/SPRY domain and is required for ubiquitination. *BMC Biol* **15**, 105,  
15 doi:10.1186/s12915-017-0444-9 (2017).
- 16 28 Jiao, A. L. & Slack, F. J. RNA-mediated gene activation. *Epigenetics* **9**, 27-  
17 36, doi:10.4161/epi.26942 (2014).
- 18 29 Ivanyi-Nagy, R. *et al.* The RNA interactome of human telomerase RNA  
19 reveals a coding-independent role for a histone mRNA in telomere  
20 homeostasis. *Elife* **7**, doi:10.7554/eLife.40037 (2018).
- 21 30 Kumari, P. & Sampath, K. cncRNAs: Bi-functional RNAs with protein  
22 coding and non-coding functions. *Semin Cell Dev Biol* **47-48**, 40-51,  
23 doi:10.1016/j.semcdb.2015.10.024 (2015).

- 1 31 Castello, A. *et al.* Comprehensive Identification of RNA-Binding Domains  
2 in Human Cells. *Mol Cell* **63**, 696-710, doi:10.1016/j.molcel.2016.06.029  
3 (2016).
- 4 32 Castello, A. *et al.* Identification of RNA-binding domains of RNA-binding  
5 proteins in cultured cells on a system-wide scale with RBDmap. *Nat Protoc*  
6 **12**, 2447-2464, doi:10.1038/nprot.2017.106 (2017).
- 7 33 Backlund, M. *et al.* Plasticity of nuclear and cytoplasmic stress responses  
8 of RNA-binding proteins. *Nucleic Acids Res* **48**, 4725-4740,  
9 doi:10.1093/nar/gkaa256 (2020).
- 10 34 Bunnik, E. M. *et al.* The mRNA-bound proteome of the human malaria  
11 parasite *Plasmodium falciparum*. *Genome Biol* **17**, 147,  
12 doi:10.1186/s13059-016-1014-0 (2016).
- 13 35 Wessels, H. H. *et al.* The mRNA-bound proteome of the early fly embryo.  
14 *Genome Res* **26**, 1000-1009, doi:10.1101/gr.200386.115 (2016).
- 15 36 Kilchert, C. *et al.* System-wide analyses of the fission yeast poly(A)(+)  
16 RNA interactome reveal insights into organization and function of RNA-  
17 protein complexes. *Genome Res*, doi:10.1101/gr.257006.119 (2020).
- 18 37 Bao, X. *et al.* Capturing the interactome of newly transcribed RNA. *Nat*  
19 *Methods* **15**, 213-220, doi:10.1038/nmeth.4595 (2018).
- 20 38 Huang, R., Han, M., Meng, L. & Chen, X. Capture and Identification of  
21 RNA-binding Proteins by Using Click Chemistry-assisted RNA-  
22 interactome Capture (CARIC) Strategy. *J Vis Exp*, doi:10.3791/58580  
23 (2018).

1 39 Asencio, C., Chatterjee, A. & Hentze, M. W. Silica-based solid-phase  
2 extraction of cross-linked nucleic acid-bound proteins. *Life Sci Alliance* **1**,  
3 e201800088, doi:10.26508/lsa.201800088 (2018).

4 40 Shchepachev, V. *et al.* Defining the RNA interactome by total RNA-  
5 associated protein purification. *Mol Syst Biol* **15**, e8689,  
6 doi:10.15252/msb.20188689 (2019).

7 41 Trendel, J. *et al.* The Human RNA-Binding Proteome and Its Dynamics  
8 during Translational Arrest. *Cell* **176**, 391-403 e319,  
9 doi:10.1016/j.cell.2018.11.004 (2019).

10 42 Queiroz, R. M. L. *et al.* Comprehensive identification of RNA-protein  
11 interactions in any organism using orthogonal organic phase separation  
12 (OOPS). *Nat Biotechnol* **37**, 169-178, doi:10.1038/s41587-018-0001-2  
13 (2019).

14 43 Urdaneta, E. C. *et al.* Purification of cross-linked RNA-protein complexes  
15 by phenol-toluol extraction. *Nat Commun* **10**, 990, doi:10.1038/s41467-  
16 019-08942-3 (2019).

17 44 Burger, K. *et al.* 4-thiouridine inhibits rRNA synthesis and causes a  
18 nucleolar stress response. *RNA Biol* **10**, 1623-1630,  
19 doi:10.4161/rna.26214 (2013).

20 45 Muckenthaler, M. U., Rivella, S., Hentze, M. W. & Galy, B. A Red Carpet  
21 for Iron Metabolism. *Cell* **168**, 344-361, doi:10.1016/j.cell.2016.12.034  
22 (2017).

23 46 Altelaar, A. F. *et al.* Benchmarking stable isotope labeling based  
24 quantitative proteomics. *J Proteomics* **88**, 14-26,  
25 doi:10.1016/j.jprot.2012.10.009 (2013).

1 47 Hoglebe, A. *et al.* Benchmarking common quantification strategies for  
2 large-scale phosphoproteomics. *Nat Commun* **9**, 1045,  
3 doi:10.1038/s41467-018-03309-6 (2018).

4 48 Dimayacyac-Esleta, B. R. *et al.* Rapid High-pH Reverse Phase StageTip  
5 for Sensitive Small-Scale Membrane Proteomic Profiling. *Anal Chem* **87**,  
6 12016-12023, doi:10.1021/acs.analchem.5b03639 (2015).

7 49 Greenberg, J. R. Ultraviolet light-induced crosslinking of mRNA to  
8 proteins. *Nucleic Acids Res* **6**, 715-732, doi:10.1093/nar/6.2.715 (1979).

9 50 He, C. *et al.* High-Resolution Mapping of RNA-Binding Regions in the  
10 Nuclear Proteome of Embryonic Stem Cells. *Mol Cell* **64**, 416-430,  
11 doi:10.1016/j.molcel.2016.09.034 (2016).

12 51 Wisniewski, J. R., Zougman, A., Nagaraj, N. & Mann, M. Universal sample  
13 preparation method for proteome analysis. *Nat Methods* **6**, 359-362,  
14 doi:10.1038/nmeth.1322 (2009).

15 52 Niu, L. *et al.* Modified TCA/acetone precipitation of plant proteins for  
16 proteomic analysis. *PLoS One* **13**, e0202238,  
17 doi:10.1371/journal.pone.0202238 (2018).

18 53 Sielaff, M. *et al.* Evaluation of FASP, SP3, and iST Protocols for Proteomic  
19 Sample Preparation in the Low Microgram Range. *J Proteome Res* **16**,  
20 4060-4072, doi:10.1021/acs.jproteome.7b00433 (2017).

21 54 Rappsilber, J., Mann, M. & Ishihama, Y. Protocol for micro-purification,  
22 enrichment, pre-fractionation and storage of peptides for proteomics using  
23 StageTips. *Nat Protoc* **2**, 1896-1906, doi:10.1038/nprot.2007.261 (2007).

1 55 Villen, J. & Gygi, S. P. The SCX/IMAC enrichment approach for global  
2 phosphorylation analysis by mass spectrometry. *Nat Protoc* **3**, 1630-1638,  
3 doi:10.1038/nprot.2008.150 (2008).

4 56 Krijgsveld, J., Gauci, S., Dormeyer, W. & Heck, A. J. In-gel isoelectric  
5 focusing of peptides as a tool for improved protein identification. *J*  
6 *Proteome Res* **5**, 1721-1730, doi:10.1021/pr0601180 (2006).

7 57 Tyanova, S., Temu, T. & Cox, J. The MaxQuant computational platform  
8 for mass spectrometry-based shotgun proteomics. *Nat Protoc* **11**, 2301-  
9 2319, doi:10.1038/nprot.2016.136 (2016).

10 58 Gierlinski, M., Gastaldello, F., Cole, C. & Barton, G. J. Proteus: an R  
11 package for downstream analysis of MaxQuant output. *bioRxiv*, 416511,  
12 doi:10.1101/416511 (2018).

13 59 Lazar, C., Gatto, L., Ferro, M., Bruley, C. & Burger, T. Accounting for the  
14 Multiple Natures of Missing Values in Label-Free Quantitative Proteomics  
15 Data Sets to Compare Imputation Strategies. *J Proteome Res* **15**, 1116-  
16 1125, doi:10.1021/acs.jproteome.5b00981 (2016).

17 60 Cox, J. *et al.* Andromeda: a peptide search engine integrated into the  
18 MaxQuant environment. *J Proteome Res* **10**, 1794-1805,  
19 doi:10.1021/pr101065j (2011).

20 61 Ritchie, M. E. *et al.* limma powers differential expression analyses for  
21 RNA-sequencing and microarray studies. *Nucleic Acids Res* **43**, e47,  
22 doi:10.1093/nar/gkv007 (2015).

23 62 Harsha, H. C., Molina, H. & Pandey, A. Quantitative proteomics using  
24 stable isotope labeling with amino acids in cell culture. *Nat Protoc* **3**, 505-  
25 516, doi:10.1038/nprot.2008.2 (2008).



1 63 Anantharaman, V. & Aravind, L. The PRC-barrel: a widespread, conserved  
2 domain shared by photosynthetic reaction center subunits and proteins of  
3 RNA metabolism. *Genome Biol* **3**, RESEARCH0061, doi:10.1186/gb-  
4 2002-3-11-research0061 (2002).

5 64 Dennis, G., Jr. *et al.* DAVID: Database for Annotation, Visualization, and  
6 Integrated Discovery. *Genome Biol* **4**, P3 (2003).

7 65 Strein, C., Alleaume, A. M., Rothbauer, U., Hentze, M. W. & Castello, A. A  
8 versatile assay for RNA-binding proteins in living cells. *RNA* **20**, 721-731,  
9 doi:10.1261/rna.043562.113 (2014).

10 66 Konig, J. *et al.* iCLIP reveals the function of hnRNP particles in splicing at  
11 individual nucleotide resolution. *Nature structural & molecular biology* **17**,  
12 909-915, doi:10.1038/nsmb.1838 (2010).

13 67 Hafner, M. *et al.* Transcriptome-wide identification of RNA-binding protein  
14 and microRNA target sites by PAR-CLIP. *Cell* **141**, 129-141,  
15 doi:10.1016/j.cell.2010.03.009 (2010).

16 68 Van Nostrand, E. L. *et al.* Robust transcriptome-wide discovery of RNA-  
17 binding protein binding sites with enhanced CLIP (eCLIP). *Nat Methods*  
18 **13**, 508-514, doi:10.1038/nmeth.3810 (2016).

19 69 Van Nostrand, E. L. *et al.* A Large-Scale Binding and Functional Map of  
20 Human RNA Binding Proteins. *bioRxiv*, 179648, doi:10.1101/179648  
21 (2018).

22 70 Jarvelin, A. I., Noerenberg, M., Davis, I. & Castello, A. The new (dis)order  
23 in RNA regulation. *Cell Commun Signal* **14**, 9, doi:10.1186/s12964-016-  
24 0132-3 (2016).

1 71 Arif, A. *et al.* The GAIT translational control system. *Wiley Interdiscip Rev*  
2 *RNA* **9**, doi:10.1002/wrna.1441 (2018).  
3

Figure 1

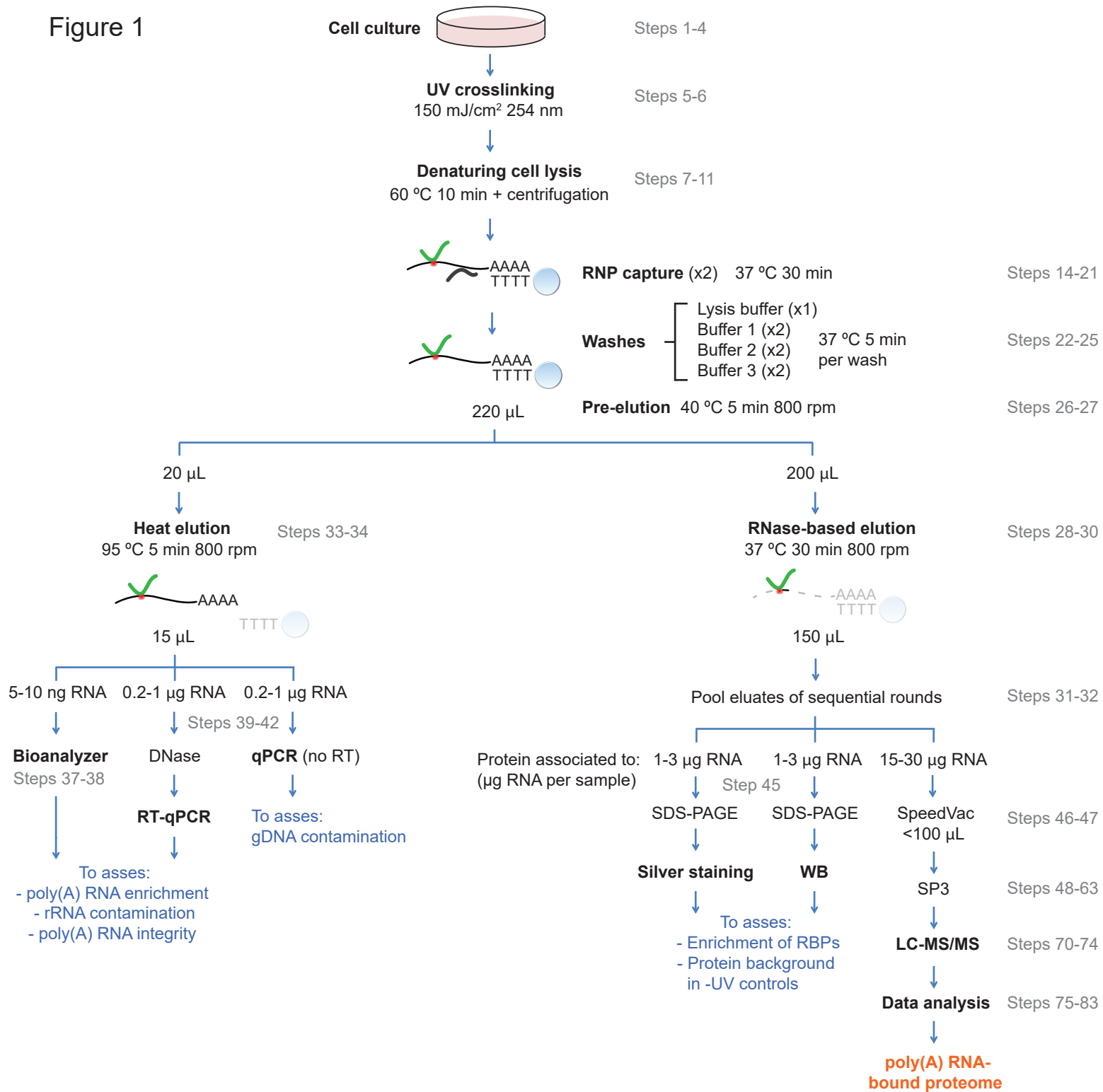


Figure 2

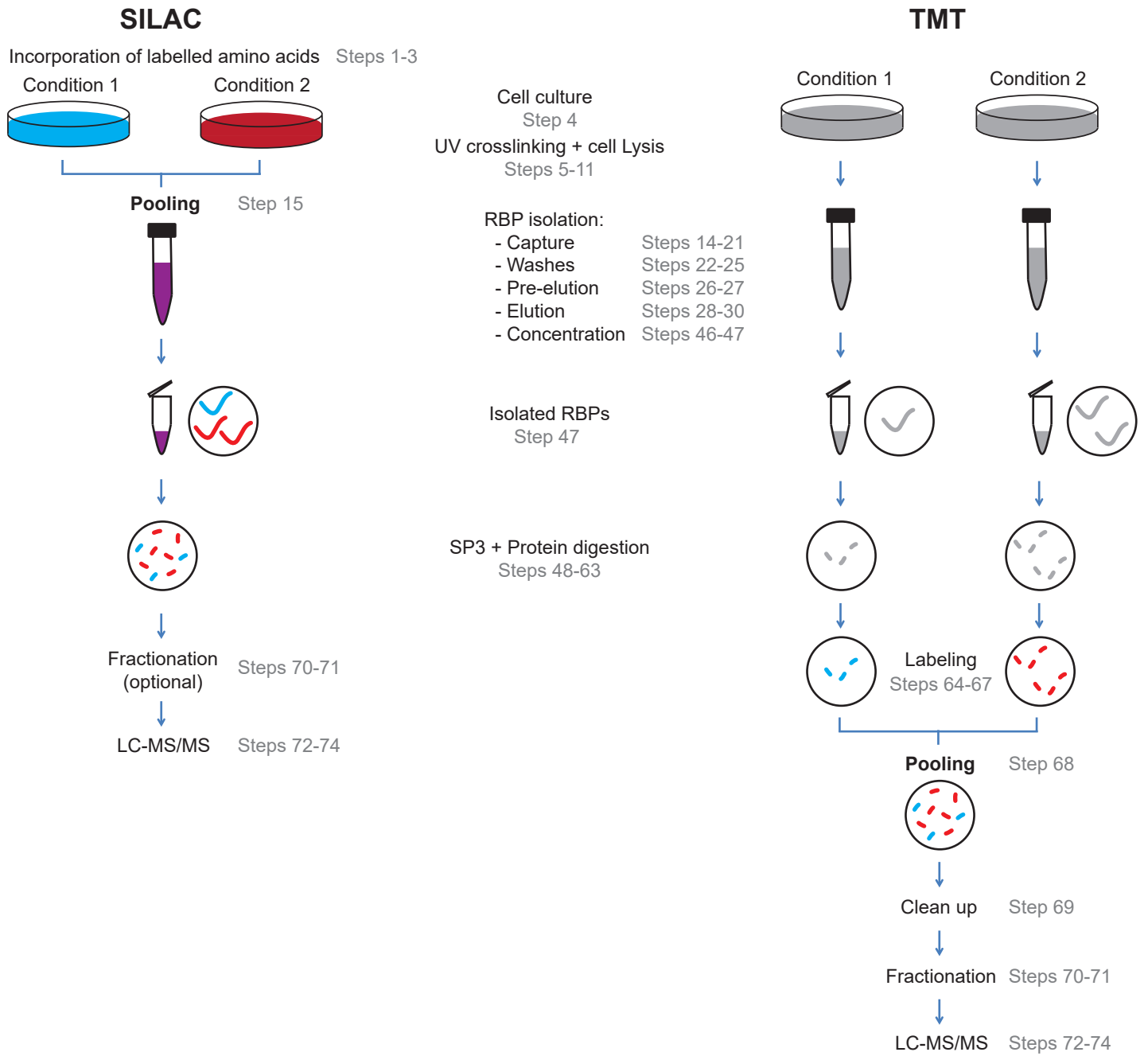
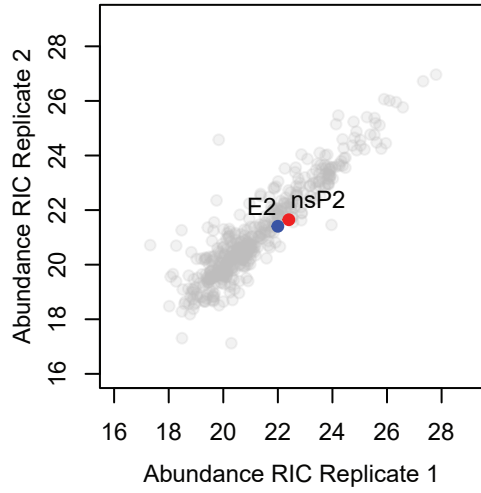
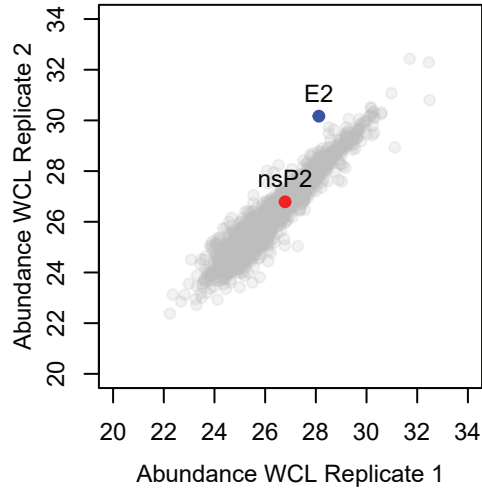


Figure 3

**a** Protein Abundance in RIC



**b** Protein Abundance in WCL



**c** Relative RNA binding activity (RIC/WCL)

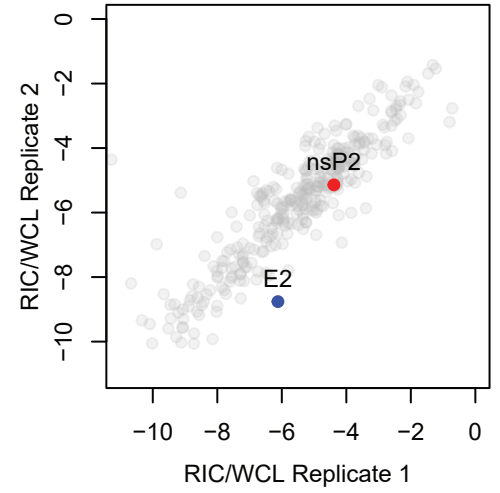


Figure 4

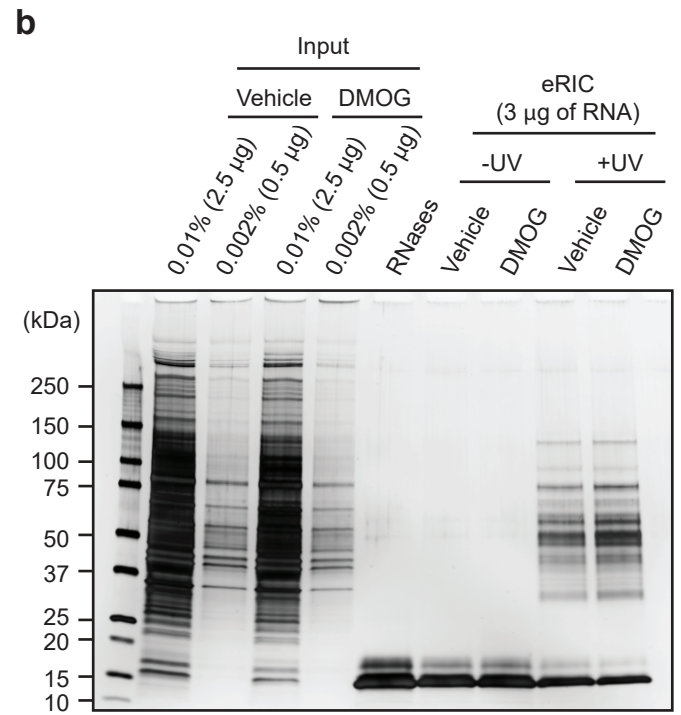
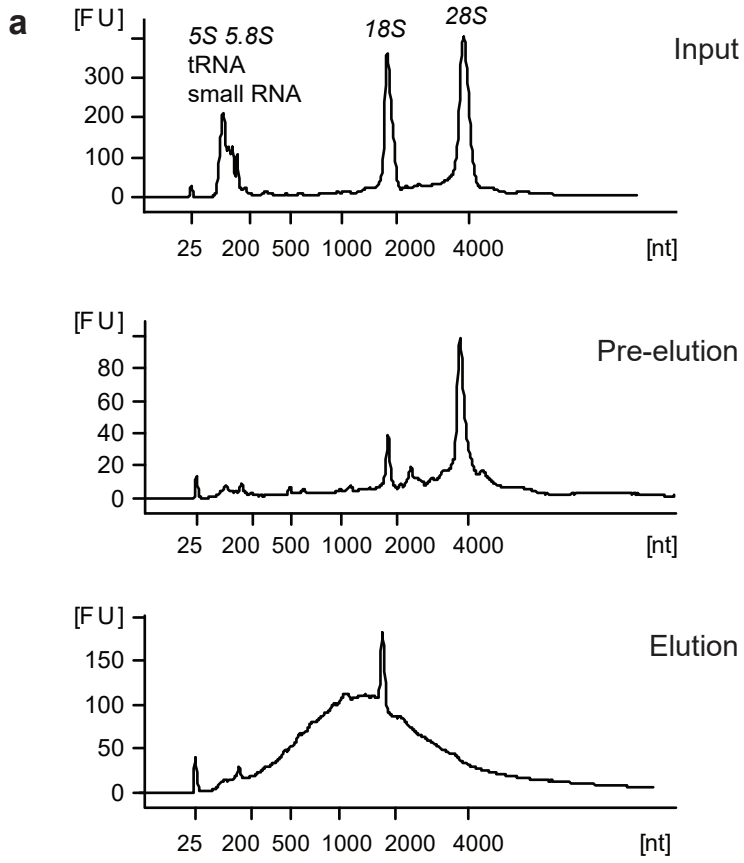
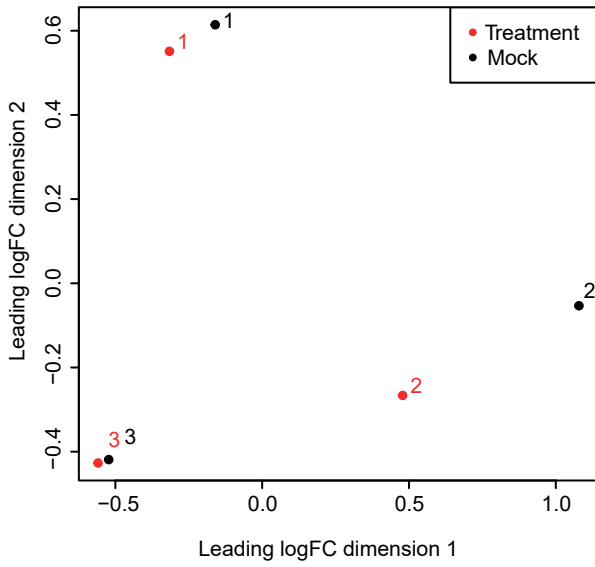
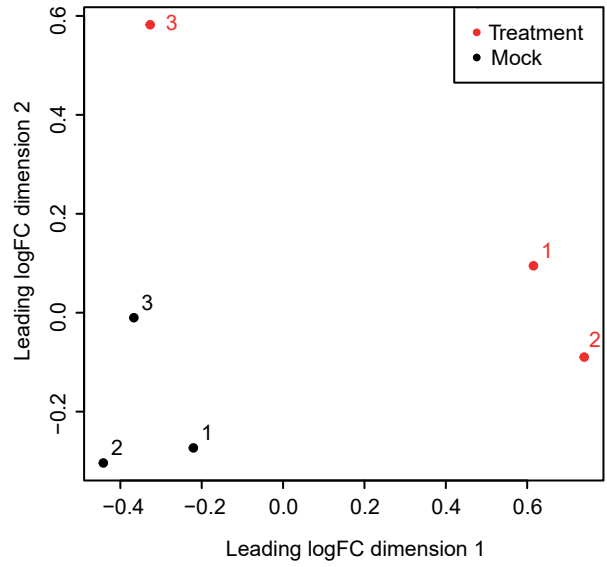


Figure 5

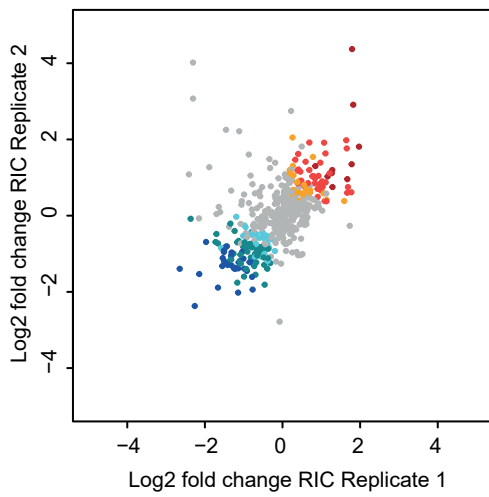
**a** Multidimensional scaling with batch effect



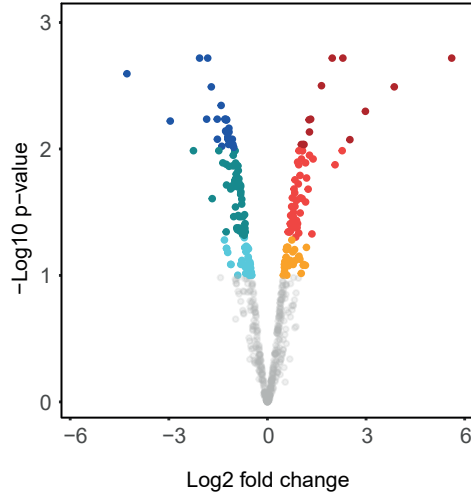
**b** Multidimensional scaling with outlier



**c** Correlating RIC replicates



**d** Changes in RIC



**e** Correlating Input replicates

