



University of Groningen

Endoscopic Resection Without Subsequent Ablation Therapy for Early Barrett's Neoplasia

Dutch Barrett Expert Centers; van Munster, S N; Nieuwenhuis, E A; Weusten, B L A M; Herrero, L Alvarez; Bogte, A; Alkhalaf, A; Schenk, B E; Schoon, E J; Curvers, W

Published in:

Journal of Gastrointestinal Surgery

DOI:

[10.1007/s11605-020-04836-8](https://doi.org/10.1007/s11605-020-04836-8)

IMPORTANT NOTE: You are advised to consult the publisher's version (publisher's PDF) if you wish to cite from it. Please check the document version below.

Document Version

Publisher's PDF, also known as Version of record

Publication date:

2020

[Link to publication in University of Groningen/UMCG research database](#)

Citation for published version (APA):

Dutch Barrett Expert Centers, van Munster, S. N., Nieuwenhuis, E. A., Weusten, B. L. A. M., Herrero, L. A., Bogte, A., Alkhalaf, A., Schenk, B. E., Schoon, E. J., Curvers, W., Koch, A. D., van de Ven, S. E. M., de Jonge, P. J. F., Tang, T., Nagengast, W. B., Peters, F. T. M., Westerhof, J., Houben, M. H. M. G., Bergman, J. J. G. H. M., & Pouw, R. E. (2020). Endoscopic Resection Without Subsequent Ablation Therapy for Early Barrett's Neoplasia: Endoscopic Findings and Long-Term Mortality. *Journal of Gastrointestinal Surgery*. <https://doi.org/10.1007/s11605-020-04836-8>

Copyright

Other than for strictly personal use, it is not permitted to download or to forward/distribute the text or part of it without the consent of the author(s) and/or copyright holder(s), unless the work is under an open content license (like Creative Commons).

Take-down policy

If you believe that this document breaches copyright please contact us providing details, and we will remove access to the work immediately and investigate your claim.

Downloaded from the University of Groningen/UMCG research database (Pure): <http://www.rug.nl/research/portal>. For technical reasons the number of authors shown on this cover page is limited to 10 maximum.



Endoscopic Resection Without Subsequent Ablation Therapy for Early Barrett's Neoplasia: Endoscopic Findings and Long-Term Mortality

S. N. van Munster, MD^{1,2} · E. A. Nieuwenhuis, MD¹ · B. L. A. M. Weusten, MD, PhD^{2,3} · L. Alvarez Herrero, MD, PhD² · A. Bogte, MD³ · A. Alkhalaf, MD⁴ · B. E. Schenk, MD⁴ · E. J. Schoon, MD, PhD⁵ · W. Curvers, MD, PhD⁵ · A. D. Koch, MD, PhD⁶ · S. E. M. van de Ven, MD⁶ · P. J. F. de Jonge, MD, PhD⁶ · T. Tang, MD⁷ · W. B. Nagengast, MD, PhD⁸ · F. T. M. Peters, MD, PhD⁸ · J. Westerhof, MD⁸ · M. H. M. G. Houben, MD⁹ · Jacques J. G. H. M. Bergman, MD, PhD¹ · R. E. Pouw, MD, PhD¹ · on behalf of the Dutch Barrett Expert Centers

Received: 27 May 2020 / Accepted: 17 October 2020

© 2020 The Author(s)

Abstract

Introduction After endoscopic resection (ER) of neoplasia in Barrett's esophagus (BE), it is recommended to ablate the remaining BE to minimize the risk for metachronous disease. However, we report long-term outcomes for a nationwide cohort of all patients who did not undergo ablation of the remaining BE after ER for early BE neoplasia, due to clinical reasons or performance status.

Methods Endoscopic therapy for BE neoplasia in the Netherlands is centralized in 8 expert centers with specifically trained endoscopists and pathologists. Uniformity is ensured by a joint protocol and regular group meetings. We report all patients who underwent ER for a neoplastic lesion between 2008 and 2018, without further ablation therapy. Outcomes include progression during endoscopic FU and all-cause mortality.

Results Ninety-four patients were included with mean age 74 (\pm 10) years. ER was performed for low-grade dysplasia (LGD) (10%), high-grade dysplasia (HGD) (25%), or low-risk esophageal adenocarcinoma (EAC) (65%). No additional ablation was performed for several reasons; in 73 patients (78%), the main argument was expected limited life expectancy. Median C2M5 BE persisted after ER, and during median 21 months (IQR 11–51) with 4 endoscopies per patient, no patient progressed to advanced cancer. Seventeen patients (18%) developed HGD/EAC: all were curatively treated endoscopically. In total, 29/73 patients (40%) with expected limited life expectancy died due to unrelated causes during FU, none of EAC.

Conclusion In selected patients, ER monotherapy with endoscopic surveillance of the residual BE is a valid alternative to eradication therapy with ablation.

Digestive Disease Week 2019, selected for SSAT plenary presentation, May 2020

United European Gastroenterology Week 2019, oral presentation, October 2019

✉ Jacques J. G. H. M. Bergman, MD, PhD
j.bergman@amsterdamumc.nl

¹ Department of Gastroenterology and Hepatology, Amsterdam Gastroenterology Endocrinology and Metabolism, Amsterdam University Medical Centers, location AMC, Meibergdreef 9, 1105, AZ Amsterdam, The Netherlands

² Department of Gastroenterology and Hepatology, Sint Antonius Hospital, Nieuwegein, The Netherlands

³ Department of Gastroenterology and Hepatology, University Medical Center Utrecht, Utrecht University, Utrecht, The Netherlands

⁴ Department of Gastroenterology and Hepatology, Isala Clinics, Zwolle, The Netherlands

⁵ Department of Gastroenterology and Hepatology, Catharina Hospital, Eindhoven, The Netherlands

⁶ Dept. of Gastroenterology and Hepatology, Erasmus Medical Center, Rotterdam, The Netherlands

⁷ Department of Gastroenterology and Hepatology, IJsselland Hospital, Capelle aan den IJssel, The Netherlands

⁸ Department of Gastroenterology and Hepatology, University Medical Center Groningen, Groningen University, Groningen, The Netherlands

⁹ Department of Gastroenterology and Hepatology, Haga Teaching Hospital, Den Haag, The Netherlands

Keywords Barrett's esophagus · Esophageal adenocarcinoma · Endoscopic therapy · Endoscopic mucosal resection

Introduction

Barrett's esophagus (BE) is the most important risk factor for esophageal adenocarcinoma (EAC), which has a poor prognosis. Identifying EAC at an early stage allows for endoscopic treatment with an excellent prognosis. The first step in endoscopic treatment for BE-related neoplasia is removal of all visible lesions with endoscopic resection (ER) techniques, which serves both diagnostic and therapeutic purposes. It has been reported that the remaining flat BE that persists after ER of a neoplastic lesion has a risk of developing metachronous HGD/EAC between 15 and 30% in 3–5 years^{1–3}. Based on these data, most international guidelines advise additional ablation therapy after ER to eradicate the entire BE segment^{4–7}. Given the large amount of high-quality data supporting radiofrequency ablation (RFA), this is recommended as first-choice ablation technique^{4, 8–10}.

Although RFA therapy is highly effective for eradication of flat BE, the choice to continue with ablation requires balanced decision-making, taking into account patient's age, comorbidity, and life expectancy⁶. The aforementioned FU studies have also shown that metachronous lesions were always detected at early stages that allowed curative endoscopic treatment^{1–3}. Moreover, the majority of patients will never develop metachronous neoplasia. Performing RFA for all post-ER patients may thus be associated with overtreatment.

Although severe complications due to RFA treatment are very rare, complications do occur, most commonly esophageal strictures in up to 10–14%¹¹. Furthermore, RFA treatment to eradicate all residual BE requires on average 3 additional therapeutic endoscopies. Patients may experience post-procedural pain, discomfort, or dysphagia. Therefore, after ER for early neoplasia, endoscopic surveillance ("ER monotherapy") may be an acceptable alternative to RFA, especially in patients with older age and/or severe comorbidities.

In the Netherlands, endoscopic treatment for BE is centralized in 8 Barrett Expert Centers (BECs), with a uniform treatment and follow-up protocol. Since the introduction of RFA in 2008, these centers adhered to the ER monotherapy strategy in selected patients. In the current study, we report the long-term outcomes of "ER monotherapy" as an alternative to additional ablation therapy in patients with limited life expectancy.

Methods

This study was based on the Barrett Expert Center registry (BEC registry) (Netherlands Trial Register, NL7039), which has been described in detail earlier¹². In short, this registry captures outcomes for all patients with Barrett's neoplasia in

the Netherlands who underwent endoscopic treatment since 2008. Care for BE neoplasia in the Netherlands is centralized in 8 Barrett Expert Centers (BECs), with the implication that every patient in the Netherlands is treated in one of these expert centers. This centralized organization of care was established in 2007. At that moment, a joint training program was launched for endoscopists and pathologists, one of both from each center. All BE care in the Netherlands since then has been provided by the specifically trained endoscopists and pathologists. The BECs adhered to a common treatment and follow-up protocol, and several meetings a year were held to further guarantee homogeneity. Apart from this close collaboration for clinical care, a solid joint research infrastructure was founded and resulted in multiple publications in the field of pathology^{13–16}, imaging^{17–19}, and treatment^{8, 9, 20–26} of early BE neoplasia.

The centers have a minimum annual case load of 10 new patients with neoplasia per year, and all new cases are registered in a database.

Treatment Protocol

Patients were referred to a BEC for careful work-up and staging after being diagnosed with low-grade dysplasia (LGD), HGD, or EAC. During an upper gastrointestinal endoscopy (UGE), the esophagus was carefully inspected with documentation of the Prague C&M criteria and presence of visible lesions or other abnormalities such as esophagitis or esophageal stenosis.

If a visible abnormality was detected, endoscopic resection (ER) was performed for histologic staging using the ER-cap technique, multiband mucosectomy (MBM), or endoscopic submucosal dissection (ESD) per physician's discretion. Four-quadrant random biopsies were obtained from the (residual) flat BE segment according to the Seattle protocol²⁷.

If the ER specimen showed LGD, HGD, or low-risk (LR) EAC (defined as \leq sm1 invasion with good to moderate differentiation, without lymphovascular invasion and with radical vertical resection margin), a balanced decision was made between further endoscopic treatment or surveillance. In the vast majority of patients, additional ablation therapy was offered to achieve a complete eradication of the entire Barrett's segment. However, in patients with limited life expectancy, for example, due to older age and/or severe comorbidity, surveillance of the remaining BE was preferred with endoscopic intervention in case of recurrent neoplasia and/or visible lesions.

All patients were prescribed bi-daily high-dose proton-pump inhibitors.

Follow-Up Protocol

FU for persisting non-dysplastic BE (NDBE)/LGD after ER consisted of yearly surveillance endoscopies in year 1 to 5, and then once per 2–3 years. FU was performed every 3–6 months for persisting HGD. The decision to stop further surveillance was made per physician's discretion in agreement with the patient.

Study Population

For the current study, we included all patients from the BEC registry who underwent ER monotherapy for LGD, HGD, or LR-EAC with residual flat BE before January 1, 2018.

Study Endpoints

The first primary endpoint was progression to HGD/EAC in the remaining BE. For patients with remaining NDBE or LGD, detection of HGD/EAC was considered to be progression. For patients with persisting flat HGD, new EAC was progression as was a new visible lesion containing HGD. All patients were included for this analysis. This endpoint was stratified for residual grade of dysplasia.

The second primary endpoint was all-cause mortality. This endpoint reflects whether the decision to prefer surveillance over ablation was justified for patients with expected limited life expectancy. Therefore, only the patients in whom the decision for ER monotherapy was based on age and/or comorbidity were included for this analysis.

Secondary endpoints included symptomatic EAC and/or EAC-related death and predictors for progression. All patients were included for these analyses. We also assessed progression risk to HGD/EAC in the remaining BE among only patients who had at least 18 months of endoscopic FU.

Data Collection and Data Management

Endoscopy and pathology data were collected in standardized form in all BECs, by medical students in the final year of their degree. Additionally, all patients with endpoints and an additional 50% of the remaining patients were double-checked by dedicated research fellows (all MDs). All fields were examined for missing data, unlogical values, or outliers, with data being completed or corrected where possible.

The BEC registry was merged with the non-public microdata from Statistics Netherlands for date and cause of death.

Statistics

Continuous variables were presented as mean with standard deviation (SD) or median with interquartile range (IQR) for

normally distributed or skewed data, respectively. Categorical variables were presented as numbers with percentages, and 95% confidence intervals (CI) were obtained using internal bootstrapping.

Progression risks were plotted using the cumulative incidence curve (CII), taking competing risks of unrelated death into account. Annual progression rates were calculated as the number of progressors divided by the total follow-up duration in years. Predictors for progression were assessed using Cox regression and Fine and Gray competing risk analysis, the latter considered unrelated death as competing risk.

Statistical analysis was performed using Rstudio for Windows (version 3.6.1) and packages: survival, survminer, cmprsk, ggplot2, and Hmisc.

Ethics

The Institutional Review Board of the Amsterdam University Medical Centers declared that the registry was not subject to the Medical Research Involving Human Subjects Act (“wet op medisch-wetenschappelijk onderzoek met mensen” in Dutch) and waived the need for formal ethical review and patient-informed consent. Patients were approached through an opt-out card with the possibility to object against participation in the registry.

Results

Patient Description

Between 2008 and 2018, a total of 1962 patients with early BE neoplasia were referred to a BEC. A visible abnormality was detected in 1395 patients (71%) and removed with ER (Fig. 1). After ER for LGD, HGD, or LR-EAC ($n = 1140$), a flat BE segment remained in 1034 patients. The vast majority of these patients (91%) underwent additional ablation aimed at eradication of the entire BE segment. Ninety-four patients (9%) had ER monotherapy for LGD ($n = 9$), HGD ($n = 23$), T1a EAC ($n = 47$), or T1bsm1 EAC ($n = 15$), with remaining BE, and were included for this study.

Patients had a mean age of 74 (± 10) years and ASA classification II (67%) or III/IV (23/2%), with ER performed for LGD (10%), HGD (25%), or LR-EAC (66%) (Table 1).

Decision-Making After ER

After ER for all visible abnormalities, a flat BE segment of median C2M5 (0–5; 3–8) remained with NDBE ($n = 48$, 51%), LGD ($n = 29$, 32%), or HGD ($n = 6$, 6%). In 11 patients (12%), no biopsies were obtained since this was considered not to change clinical decision-making.

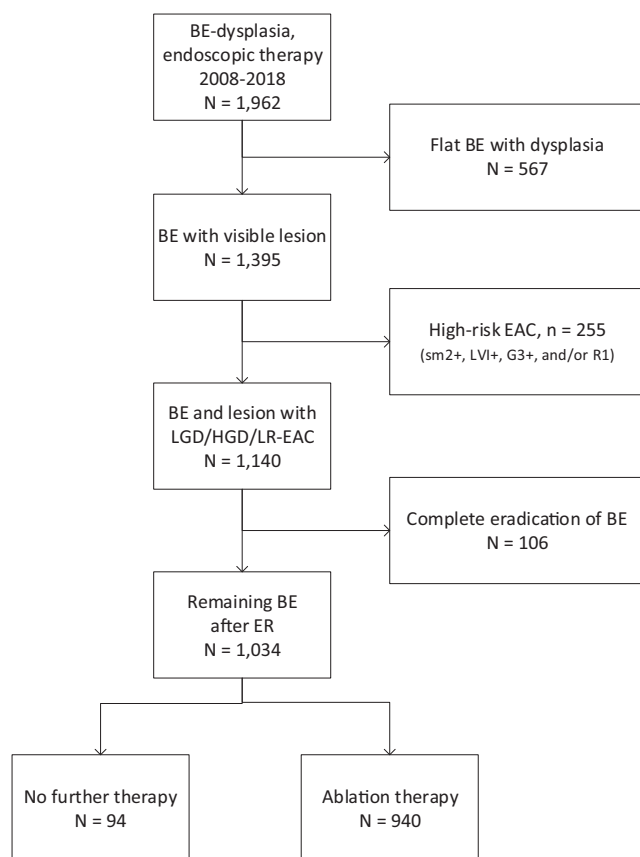


Fig. 1 Flowchart. Patient flow in the Barrett Expert Center Registry. All patients with remaining flat BE after ER for which no ablation was performed were included in the current study ($n = 94$)

In 73 patients (78%), additional ablation was not started due to age and/or comorbidity. Concomitant reasons in this group were as follows: expected poor regression after RFA due to regeneration with BE after ER ($n = 8$, 11%); patient preference ($n = 7$, 10%); persistence of a small BE tongue only ($n = 5$, 7%); and/or complications after ER ($n = 3$, 4%) (Fig. 2).

In the remaining 21 patients (22%) in whom age and comorbidity played no role, reasons not to continue with ablation therapy were as follows: other treatment protocols (e.g., in the pre-RFA era) ($n = 11$, 52%); persistence of a small BE tongue only ($n = 6$, 29%); expected poor regression after RFA due to BE regeneration after ER ($n = 3$, 14%); complications after ER ($n = 1$, 5%); and/or patient preference ($n = 1$, 5%).

Progression During Follow-Up

During a median endoscopic FU of 21 months (11–51) with a median of 4 endoscopies^{3–5} per patient, no patient progressed to advanced cancer. Overall, 17 patients (18%, annual progression risk 8.0% [95% CI 5.1–12.5]) progressed to HGD ($n = 10$) or LR-EAC ($n = 7$) (Table 2). The median time to progression was 26 months (23–47), and the first progression was detected 18

months after ER. All patients who progressed had undergone at least 2 FU endoscopies without abnormalities after ER.

Sixteen out of seventeen progressors were successfully treated endoscopically, either with ER for a visible lesion containing LR-EAC ($n = 7$) or HGD ($n = 6$) or with ablation therapy for flat HGD ($n = 3$). A single patient who progressed from LGD to HGD had no further treatment, and the patient died shortly after due to an unrelated cause. Six progressors had developed a worse histological grade during FU, than the initial histology after baseline ER. This included baseline LGD to m-EAC in FU ($n = 1$), baseline HGD with m-EAC in FU ($n = 4$), and baseline m-EAC with sm-EAC during FU ($n = 1$).

The annual risk for progression was 6.4% for residual NDBE and 6.7% for LGD, as compared to 14.5% for residual HGD (Table 2).

In total, 55 patients had an endoscopic FU > 18 months with an annual risk for progression of 8.6% per person year [95% CI 5.4–13.3]. The median FU in this subgroup of patients was 31 months after ER (IQR 17–53).

In the majority (27/39; 69%) of the patients with FU < 18 months, endoscopic FU was discontinued at median 3 months (IQR 0–9) after ER, due to limited life expectancy. Of these 27 patients, 15 had unrelated death median 18 months after ER, whereas the remaining 12 were alive and asymptomatic at median 55 months after ER. The remaining 12/39 patients with short FU were recently treated with ER and were still under endoscopic surveillance (median 12 months).

All-Cause Mortality

Our second aim was to assess all-cause mortality during long-term follow-up in the subgroup of patients with older age and/or comorbidity, to verify whether ER monotherapy was justified in this group of patients.

As reported, in 73 patients, age and/or comorbidity played an important role in the decision not to continue with ablation therapy after ER. In 37 patients, endoscopic surveillance was stopped early at median 20 months (5–59) after ER (Fig. 3). Unrelated death occurred in 16 of these patients median 10 months after FU was stopped. The remaining 21 patients were still alive and asymptomatic median 24 months after FU was stopped.

In the remaining 36 patients, endoscopic FU was not stopped early. A total of 13 patients died from unrelated causes while being under surveillance, median 50 months after ER. The remaining 23 patients were still under surveillance at the moment of data collection, median 21 months after ER.

Overall, 29 of 73 patients (40%) died due to unrelated causes median 28 months after ER at a median age of 80 (72–85) years. The remaining 44 of 73 patients were still alive at the moment of data collection median 42 months after ER. Figure 4 shows the cumulative incidence curves for progression and unrelated death. Neoplasms other than EAC ($n = 11$,

Table 1 Demographics

	All <i>N</i> = 1034	ER monotherapy <i>N</i> = 94	ER + ablation <i>N</i> = 940
Male gender, <i>n</i> (%)	803 (80)	64 (86)	766 (82)
Age, years (mean (\pm SD))	66 (10)	74 (10)	65 (9)
BMI, kg/m ² (mean (\pm SD))	28 (5)	27 (10)	27 (5)
ASA classification, <i>n</i> (%)			
I		7 (7)	
II		63 (67)	
III		22 (23)	
IV		2 (2)	
Smoking, <i>n</i> (%)			
Current	169 (23)	12 (18)	157 (23)
Former	338 (46)	37 (56)	301 (45)
Never	232 (31)	17 (26)	215 (32)
Esophagitis, <i>n</i> (%)	36 (4)	2 (2)	34 (4)
BE segment, cm (median (IQR))	C2M5 (1–5; 3–7)	C4M6 (1–7; 3–9)	C2M5 (1–5; 3–7)
Lesion, Paris-type, <i>n</i> (%)			
0-Ip/s	107 (13)	17 (24)	90 (12)
0-IIa	563 (67)	35 (50)	528 (69)
0-IIb	131 (16)	15 (21)	116 (15)
0-IIc	35 (4)	3 (4)	32 (4)
Lesion, size, mm (mean (\pm SD))	25 (15)	27 (21)	25 (15)
Lesion, circ extent, % (mean (\pm SD))	39 (21)	39 (21)	39 (21)
ER type, <i>n</i> (%)			
EMR	983 (95)	85 (90)	898 (96)
ESD	49 (5%)	7 (7)	42 (5)
Both	2 (0.2%)	2 (2)	0
Specimen ER, <i>N</i> (median (IQR))	2 (1–3)	2 (1–3)	2 (1–3)
< 50% squamous regression of ER-site, <i>n</i> (%)	53 (5)	12 (13)	41 (5)
Worst ER pathology, <i>n</i> (%)			
LGD	69 (7)	9 (10)	60 (6)
HGD	263 (25)	23 (25)	240 (26)
EAC	702 (68)	62 (66)	640 (68)

*Missing values existed for the following variables (*n* = missing in total cohort/missing in ER monotherapy cohort): BMI (*n* = 164/25), ASA (*n* = 700/0), smoking (*n* = 295/28), Paris classification (*n* = 198/24), and regeneration of ER site (*n* = 56/0)

ASA American Society of Anesthesiologists, BE Barrett esophagus, circ circumferential, EAC(-*m/sm*) esophageal adenocarcinoma (mucosal/submucosal), EMR endoscopic mucosal resection, ER endoscopic resection, ESD endoscopic submucosal dissection, HGD high-grade dysplasia, IQR interquartile range, LGD low-grade dysplasia, SD standard deviation

38%) and cardiovascular disease (*n* = 11, 38%) contributed the most common causes of death.

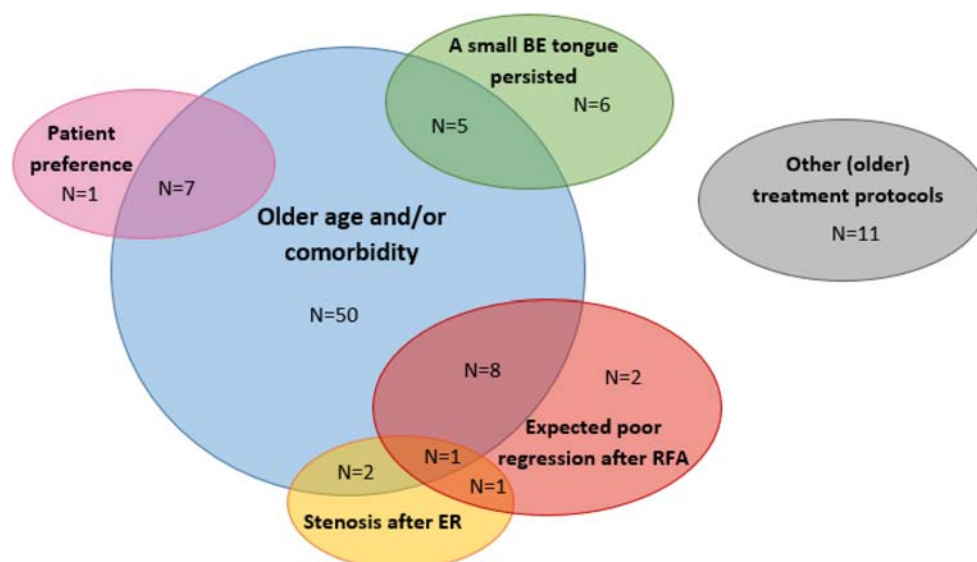
EAC-Related Death

None of the 94 patients progressed to disease stages that exceeded boundaries for curative endoscopic treatment, developed symptomatic EAC, or died from EAC.

Predictors

In univariable analysis, length of the residual BE was significantly associated with risk for progression during FU (Table 3). For patients with a remaining circumferential BE of 0–1 cm, 2–5, or > 5 cm, the annual progression risks were 1.8%, 7.0%, and 15.9%, respectively. The risk increased with 11% for every centimeter increase in BE length. The hazard ratio for persisting HGD versus LGD or NDBE was considerable, but did not

Fig. 2 Reasons not to continue with ablation therapy after ER. Several reasons were reported why RFA was not initiated; age and/or comorbidity constituted the most common reasons



reach the level of statistical significance. Estimated hazard ratios for Fine and Gray and Cox analysis were comparable.

Discussion

We report endoscopic and long-term all-cause mortality outcomes for all patients with ER monotherapy in the Netherlands between 2008 and 2018, to assess whether this is a justified treatment strategy in selected patients with early BE neoplasia, for example, in case of older age and/or significant comorbidity. The risk for progression to HGD or EAC was 8% per year. In all cases, progression was detected at early stages and curatively treated endoscopically. No patient developed advanced EAC, and no patient died due to EAC, even though endoscopic surveillance was stopped early in half of the patients. Overall, 40% of patients died due to EAC unrelated causes at median 28 months after ER. These data

suggest that ER monotherapy with endoscopic surveillance of the residual BE is a valid alternative to prophylactic ablation therapy in selected patients.

Data from the current study comport well with older studies from the pre-ablation era, reporting progression rates in remaining flat BE after ER varying from 15 during 5 years to 30% in 3 years^{1–3}. These data have generally been used to justify initiating ablation therapy after ER, but one could also look at it from a different point of view. During every year of FU after ER, only 8% of patients develop progression, and this was always curatively treated with a single ER.

RFA is effective and can achieve complete eradication of all BE (CE-BE) in 90–95% of patients. However, RFA is associated with multiple hospital visits and a risk of complications. Patients with baseline ER have the highest risk for post-RFA stenosis²⁸. Apart from RFA-related complications, a recent study showed that the risk for cardiovascular complications due to sedation increases with age²⁹. Unfortunately,

Table 2 Progression rates per histologic stage in the remaining BE after ER

Histology in residual BE after ER	Total patients (N)	Median FU duration (months)	Median N endoscopies	Worst histology during FU					Annual progression rate [95% CI]
				No FU performed	NDBE	LGD	HGD	LR-EAC	
No biopsies	11	17 (8–65)	3 (1–6)	5	5	1	0	0	–
NDBE	48	20 (10–48)	3 (1–5)	0	37	3	3	5	6.4% [3.3–12.1]
LGD	29	22 (14–60)	3 (1–5)	1	13	9 (4*)	5	1	6.7% [3.1–13.9]
HGD	6	41 (14–62)	7 (2–10)	0	0	0	5 (2**)	1	14.5% [5.0–34.6]
Total	94	21 (11–51)	3 (1–5)	6	54	13	13	7	8.0% [5.1–12.5]

Risk for progression to HGD/EAC during endoscopic FU, stratified for histology of the flat BE that remained after ER

*4 with persisting LGD were treated with RFA

**2 with HGD developed a lesion during FU and were treated with ER and counted as progression

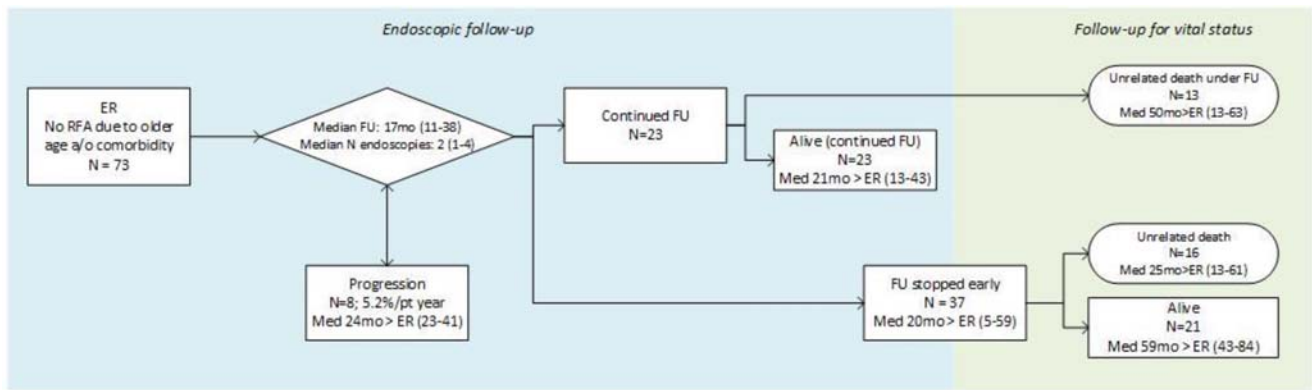


Fig. 3 Long-term outcomes for 73 patients with no ablation due to older age and/or comorbidity. The outcomes during endoscopic follow-up, and long-term follow-up for vital status, among the 73 patients where RFA was not initiated due to older age and/or comorbidity

we could not evaluate these endpoints in the current study given its retrospective nature with a risk for underreporting of these complications.

The decision to initiate prophylactic ablation therapy of residual BE after ER of neoplasia should be based on the answers to the following three questions:

1. What is the risk for this patient to develop recurrent neoplasia, with or without ablation therapy?

A substantial proportion of patients will never develop neoplasia in the remaining BE after ER. If the remaining BE after ER contains NDBE or LGD, the annual progression risk was only 6.4–6.7%. The median BE length in the current study was C2M5, and for shorter BE lengths, this annual risk will be even lower¹. Apart from the annual risk, we should also consider the cumulative risk for progression. Assume we continue surveillance until the age of 80 years, then the cumulative risk for a 50-year-old patient will be much higher as compared to a 78-year-old patient. Furthermore, if RFA treatment is initiated, it is important to realize that the risk for

future neoplasia is lowered, but not reduced to zero. RFA generally fails to achieve CE-BE in 5–10% of patients, and the annual risk for recurrent neoplasia after CE-BE is 0.8%¹².

2. If this patient develops progression, what is the risk of dying from EAC?

Second, the clinically relevant endpoint that should be prevented is progression to advanced, symptomatic EAC and/or EAC-related death. Most endoscopic studies define recurrent HGD or worse as an endpoint, or even recurrent LGD. Although this might be a logic endpoint for some studies, this is not the relevant endpoint that matters to a patient.

Proper data describing the natural history of HGD or early EAC is lacking, but older studies report incidence rates of HGD to advanced EAC of 6.6% per patient year with 2- to 5-year duration between detection of HGD and development of advanced EAC^{30, 31}. Based on a worst-case scenario in which all patients would have died due to advanced EAC 2 years after progression was detected but not treated, we adapted the factual curve for progression from our study by

Fig. 4 Risk for progression to HGD/EAC and unrelated death after ER monotherapy. Cumulative incidence curves for progression to HGD/EAC and unrelated death during long-term FU after ER monotherapy, among the 73 patients in which RFA was not initiated due to older age and/or comorbidity

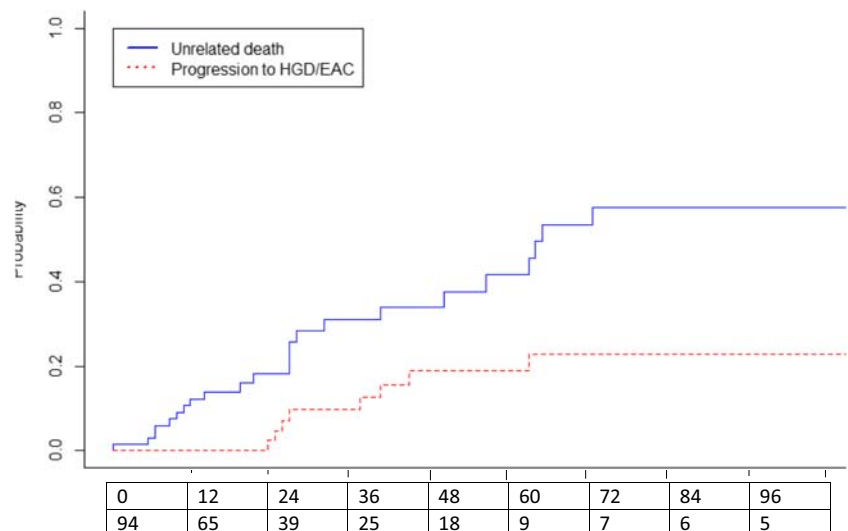


Table 3 Univariable analysis for progression

		No progression <i>N</i> = 77	Progression <i>N</i> = 17	FG HR [95% CI]	Cox HR [95% CI]
Demographics	Age, years (mean (\pm SD))	75 (9)	71 (11)	1.01 [0.94; 1.04]	1.01 [0.95; 1.04]
	Male gender, <i>n</i> (%)	52 (68)	12 (71)	0.82 [0.43; 3.47]	0.91 [0.32; 2.60]
Baseline BE	Worst ER histology, <i>n</i> (%)			2.53 [0.29; 22.3]	1.90 [0.25; 14.67]
	LGD	8 (10)	1 (6)		
	HGD/EAC	69 (90)	16 (94)		
	N ER specimen	2 (1–3)	2 (1–3)	0.94 [0.67; 1.30]	0.99 [0.72; 1.36]
Residual BE	Circumferential extent, cm (median (IQR))	2 (0–5)	5 (2–6)	1.11 [1; 1.23]	1.22 [1.08; 1.40]
	Maximum extent, cm (median (IQR))	5 (2–8)	6 (5–8)	1.09 [0.98; 1.21]	1.13 [0.98; 1.30]
	Worst histology, <i>n</i> (%)			2.17 [0.77; 6.18]	2.47 [0.68; 8.99]
	NDBE/LGD	63 (82)	14 (82)		
	HGD	3 (4)	3 (18)		
	No histology	11 (14)	–		

Univariable analysis for demographic and treatment characteristics for prediction or progression to HGD or EAC during endoscopic FU, assessed with Cox analysis and Fine and Gray estimation

EAC esophageal adenocarcinoma, ER endoscopic resection, ER endoscopic resection, FG Fine and Gray, HGD high-grade dysplasia, IQR interquartile range, LGD low-grade dysplasia, NDBE non-dysplastic Barrett esophagus, SD standard deviation

horizontally shifting it two years to the right (Fig. 5). This new curve now represents the imaginary incidence for EAC-related death in the study population. This plot is based on numerous assumptions and should not be adopted for truth, but merely provides insight in the differences of occurrence and timing for varying endpoints used.

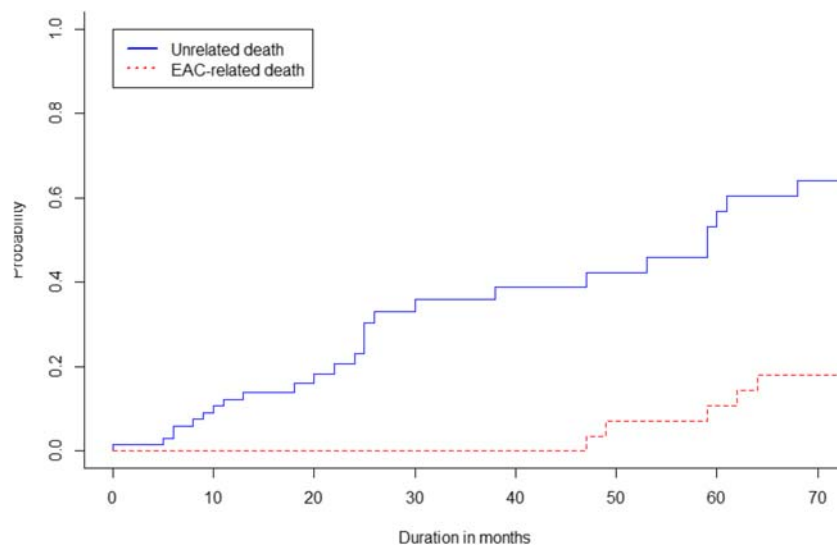
3. How does the risk for EAC-related death relate to the risk of death due to other causes?

Finally, the benefits of eradication of all BE over removal of neoplasia should be balanced against the assumed life expectancy of a patient. Differences in life expectancy would not only change the cumulative risk for recurrence as described

above but would also change the curve for unrelated death in Fig 5. For young and fit patients, this curve would shift downwards, whereas it would be steeper along with increasing age and/or comorbidity. The actual decision to eradicate the remaining BE after ER should be based on a balance between the risk of future progression to advanced EAC versus the risk for death due to other causes.

What is an acceptable surveillance interval after ER monotherapy? We detected all progressors at early stages, and we found no progression within the first 18 months post-ER. This suggests that annual surveillance is an accepted strategy and that we can safely perform the first FU endoscopy 1 year after confirmation of a completely flat BE post-ER. On the other hand, in older patients with a short remaining BE segment, we may stop endoscopic

Fig. 5 Hypothetical risks for EAC-related death and unrelated death in the situation where we would not have treated progression. Imaginary cumulative incidence curves for EAC-related death and unrelated death. The incidence curve for EAC-related death was derived from the assumption that progression that was left untreated would cause EAC-related death 2 years later



FU directly after ER, based on the aforementioned considerations.

Finally, if a patient has predictors for a low success chance after RFA, such as BE regeneration of the ER scar or a long BE without any squamous islands²⁶, one may decide not to start RFA but perform surveillance instead, independent of a patient's life expectancy.

This is the first study that provides long-term FU data for an alternative treatment strategy in older patients with BE-related neoplasia. In our cohort of patients treated in a centralized setting by experienced endoscopists, this constituted 10% of the population that qualified for RFA after ER according to current guidelines. The suggested ER monotherapy strategy is advised in patients with a life expectancy of < 5–10 years and should be considered for a life expectancy of < 15–20 years. We suggest to consider and discuss this strategy in patients aged > 70 years and those with severe comorbidity.

Some limitations need to be addressed. The median duration of endoscopic FU was 21 months, while the median time to progression was 26 months, and all progressors occurred at minimal 18 months after ER. In light of this, we performed analysis that only included patients with FU over 18 months, which showed a minimally increased annual progression risk (i.e., 8.0% for all patients and 8.6% for patients with FU > 18 months). Still, if we would have had longer endoscopic FU, the annual progression risk might potentially have increased with a peak after longer FU, suggesting that the progression risk is not constant over time but increased over the years. Unfortunately, our data are too limited for solid analysis of this aspect. On the other hand, we report results for patients with *limited life expectancy*, and ultra-long-term FU data therefore have no clinical consequences. This is reflected by the fact that only one-third of patients was still under endoscopic surveillance at the moment of data collection. The others had already died of other causes (one-third) or were alive after endoscopic FU was already stopped (one-third). Therefore, extended FU with a potentially higher progression rate would not have changed the long-term outcomes, mortality rates, or our conclusions and recommendations.

Other limitations include the low number of events to assess predictive factors, which limited us to perform univariable analysis only. The FU duration for vital status may have been too short to detect recurrent, symptomatic disease among those patients whose FU was stopped early. A total of 7 patients had no endoscopic FU and were only assessed for vital status.

We are currently working on clinical prediction tools to provide individualized, evidence-based advices on optimal FU strategy after ER and/or RFA, taking account of the risk for progression and EAC-related death on the one hand, and patient age, comorbidity, and risk for unrelated death on the other. These data might help in defining the optimal strategy after ER monotherapy in the future.

In conclusion, ER monotherapy with endoscopic surveillance of the residual flat BE is a valid alternative to prophylactic ablation therapy of residual BE, in selected patients.

Authors' Contributions SvM, EN, RP, and JB performed the data acquisition, analysis, and interpretation of data for the work; BW, LA, AB, AA, BE, ES, WC, AK, PJ, TT, WN, FP, JW, MH, JB, and RP performed treatments and participated in regular treatment meetings. All authors contributed substantially to the conception and design of the work. All authors revisited the work critically for important intellectual content. All authors approved the final version to be submitted. All authors agreed to be accountable for all aspects of the work in ensuring that questions related to the accuracy or integrity of any part of the work are appropriately investigated and resolved.

Compliance with Ethical Standards

The Institutional Review Board of the Amsterdam University Medical Centers declared that the registry was not subject to the Medical Research Involving Human Subjects Act ("wet op medisch-wetenschappelijk onderzoek met mensen" in Dutch) and waived the need for formal ethical review and patient-informed consent. Patients were approached through an opt-out card with the possibility to object against participation in the registry.

Open Access This article is licensed under a Creative Commons Attribution 4.0 International License, which permits use, sharing, adaptation, distribution and reproduction in any medium or format, as long as you give appropriate credit to the original author(s) and the source, provide a link to the Creative Commons licence, and indicate if changes were made. The images or other third party material in this article are included in the article's Creative Commons licence, unless indicated otherwise in a credit line to the material. If material is not included in the article's Creative Commons licence and your intended use is not permitted by statutory regulation or exceeds the permitted use, you will need to obtain permission directly from the copyright holder. To view a copy of this licence, visit <http://creativecommons.org/licenses/by/4.0/>.

References

1. Pech O, Behrens A, May A, Nachbar L, Gossner L, Rabenstein T, et al. Long-term results and risk factor analysis for recurrence after curative endoscopic therapy in 349 patients with high-grade intraepithelial neoplasia and mucosal adenocarcinoma in Barrett's oesophagus. *Gut*. 2008;57(9):1200-6.
2. May A, Gossner L, Pech O, Fritz A, Gunter E, Mayer G, et al. Local endoscopic therapy for intraepithelial high-grade neoplasia and early adenocarcinoma in Barrett's oesophagus: acute-phase and intermediate results of a new treatment approach. *Eur J Gastroenterol Hepatol*. 2002;14(10):1085-91.
3. Ell C, May A, Pech O, Gossner L, Guenter E, Behrens A, et al. Curative endoscopic resection of early esophageal adenocarcinomas (Barrett's cancer). *Gastrointest Endosc*. 2007;65(1):3-10.
4. Weusten B, Bisschops R, Coron E, Dinis-Ribeiro M, Dumonceau JM, Esteban JM, et al. Endoscopic management of Barrett's esophagus: European Society of Gastrointestinal Endoscopy (ESGE) Position Statement. *Endoscopy*. 2017;49(2):191-8.
5. Fitzgerald RC, di Pietro M, Raganath K, Ang Y, Kang JY, Watson P, et al. British Society of Gastroenterology guidelines on the diagnosis and management of Barrett's oesophagus. *Gut*. 2014;63(1):7-42.

6. Gastroenterologists DSo. Richtlijn Barrett-Oesofagus. 2017.
7. Shaheen NJ, Falk GW, Iyer PG, Gerson LB, American College of G. ACG Clinical Guideline: Diagnosis and Management of Barrett's Esophagus. *Am J Gastroenterol.* 2016;111(1):30-50; quiz 1.
8. Phoa KN, Pouw RE, Bisschops R, Pech O, Rangunath K, Weusten BL, et al. Multimodality endoscopic eradication for neoplastic Barrett oesophagus: results of an European multicentre study (EURO-II). *Gut.* 2016;65(4):555-62.
9. Phoa KN, Pouw RE, van Vilsteren FGI, Sondermeijer CMT, Ten Kate FJW, Visser M, et al. Remission of Barrett's esophagus with early neoplasia 5 years after radiofrequency ablation with endoscopic resection: a Netherlands cohort study. *Gastroenterology.* 2013;145(1):96-104.
10. Shaheen NJ, Sharma P, Overholt BF, Wolfsen HC, Sampliner RE, Wang KK, et al. Radiofrequency ablation in Barrett's esophagus with dysplasia. *N Engl J Med.* 2009;360(22):2277-88.
11. Desai M, Saligram S, Gupta N, Vennalaganti P, Bansal A, Choudhary A, et al. Efficacy and safety outcomes of multimodal endoscopic eradication therapy in Barrett's esophagus-related neoplasia: a systematic review and pooled analysis. *Gastrointest Endosc.* 2017;85(3):482-95 e4.
12. SN van Munster EN, Blam Weusten, et al. 1083 Recurrent neoplasia after endoscopic treatment for Barrett's neoplasia is rare and random biopsies do not contribute to its detection: Results from a nationwide cohort including all 1,154 patients treated in The Netherlands between 2008 and 2018. *Gastroenterology.* 2020;158:S-210 - S-1.
13. Curvers WL, ten Kate FJ, Krishnadath KK, Visser M, Elzer B, Baak LC, et al. Low-grade dysplasia in Barrett's esophagus: overdiagnosed and underestimated. *Am J Gastroenterol.* 2010;105(7):1523-30.
14. Duits LC, Phoa KN, Curvers WL, Ten Kate FJ, Meijer GA, Seldenrijk CA, et al. Barrett's oesophagus patients with low-grade dysplasia can be accurately risk-stratified after histological review by an expert pathology panel. *Gut.* 2015;64(5):700-6.
15. Duits LC, van der Wel MJ, Cotton CC, Phoa KN, Ten Kate FJW, Seldenrijk CA, et al. Patients With Barrett's Esophagus and Confirmed Persistent Low-Grade Dysplasia Are at Increased Risk for Progression to Neoplasia. *Gastroenterology.* 2017;152(5):993-1001 e1.
16. van der Wel MJ, Klaver E, Duits LC, Pouw RE, Seldenrijk CA, Offerhaus G, et al. Adherence to pre-set benchmark quality criteria to qualify as expert assessor of dysplasia in Barrett's esophagus biopsies - towards digital review of Barrett's esophagus. *United European Gastroenterol J.* 2019;7(7):889-96.
17. Bergman J, de Groof AJ, Pech O, Rangunath K, Armstrong D, Mostafavi N, et al. An Interactive Web-Based Educational Tool Improves Detection and Delineation of Barrett's Esophagus-Related Neoplasia. *Gastroenterology.* 2019;156(5):1299-308 e3.
18. Curvers WL, van Vilsteren FG, Baak LC, Bohmer C, Mallant-Hent RC, Naber AH, et al. Endoscopic trimodal imaging versus standard video endoscopy for detection of early Barrett's neoplasia: a multicenter, randomized, crossover study in general practice. *Gastrointest Endosc.* 2011;73(2):195-203.
19. de Groof J, van der Sommen F, van der Putten J, Struyvenberg MR, Zinger S, Curvers WL, et al. The Argos project: The development of a computer-aided detection system to improve detection of Barrett's neoplasia on white light endoscopy. *United European Gastroenterol J.* 2019;7(4):538-47.
20. Barret M, Belghazi K, Weusten BL, Bergman JJ, Pouw RE. Single-session endoscopic resection and focal radiofrequency ablation for short-segment Barrett's esophagus with early neoplasia. *Gastrointest Endosc.* 2016;84(1):29-36.
21. Belghazi K, Marcon N, Teshima C, Wang KK, Milano RV, Mostafavi N, et al. Risk factors for serious adverse events associated with multiband mucosectomy in Barrett's esophagus: an international multicenter analysis of 3827 endoscopic resection procedures. *Gastrointest Endosc.* 2020.
22. Belghazi K, Pouw RE, Koch AD, Weusten B, Schoon EJ, Curvers WL, et al. Self-sizing radiofrequency ablation balloon for eradication of Barrett's esophagus: results of an international multicenter randomized trial comparing 3 different treatment regimens. *Gastrointest Endosc.* 2019;90(3):415-23.
23. Phoa KN, van Vilsteren FG, Weusten BL, Bisschops R, Schoon EJ, Rangunath K, et al. Radiofrequency ablation vs endoscopic surveillance for patients with Barrett esophagus and low-grade dysplasia: a randomized clinical trial. *JAMA.* 2014;311(12):1209-17.
24. Pouw RE, Kunzli HT, Bisschops R, Sondermeijer CM, Koch AD, Didden P, et al. Simplified versus standard regimen for focal radiofrequency ablation of dysplastic Barrett's oesophagus: a multicentre randomised controlled trial. *Lancet Gastroenterol Hepatol.* 2018;3(8):566-74.
25. Pouw RE, van Vilsteren FG, Peters FP, Alvarez Herrero L, Ten Kate FJ, Visser M, et al. Randomized trial on endoscopic resection-cap versus multiband mucosectomy for piecemeal endoscopic resection of early Barrett's neoplasia. *Gastrointest Endosc.* 2011;74(1):35-43.
26. van Vilsteren FG, Alvarez Herrero L, Pouw RE, Schrijnders D, Sondermeijer CM, Bisschops R, et al. Predictive factors for initial treatment response after circumferential radiofrequency ablation for Barrett's esophagus with early neoplasia: a prospective multicenter study. *Endoscopy.* 2013;45(7):516-25.
27. Levine DS, Blount PL, Rudolph RE, Reid BJ. Safety of a systematic endoscopic biopsy protocol in patients with Barrett's esophagus. *Am J Gastroenterol.* 2000;95(5):1152-7.
28. Haidry RJ, Butt MA, Dunn J, Banks M, Gupta A, Smart H, et al. Radiofrequency ablation for early oesophageal squamous neoplasia: outcomes from United Kingdom registry. *World J Gastroenterol.* 2013;19(36):6011-9.
29. Sang Yoon Kim CMM, et al. The impacts of age and sedation on cardio-cerebrovascular adverse events after diagnostic GI endoscopy: a nationwide population-based cohort study. *Gastrointest Endosc.* 2020.
30. Miros M, Kerlin P, Walker N. Only patients with dysplasia progress to adenocarcinoma in Barrett's oesophagus. *Gut.* 1991;32(12):1441-6.
31. Rastogi A, Puli S, El-Serag HB, Bansal A, Wani S, Sharma P. Incidence of esophageal adenocarcinoma in patients with Barrett's esophagus and high-grade dysplasia: a meta-analysis. *Gastrointest Endosc.* 2008;67(3):394-8.

Publisher's Note Springer Nature remains neutral with regard to jurisdictional claims in published maps and institutional affiliations.