



University of Groningen

Splice variant of growth hormone-releasing hormone receptor drives esophageal squamous cell carcinoma conferring a therapeutic target

Xiong, Xiao; Ke, Xiurong; Wang, Lu; Yao, Zhimeng; Guo, Yi; Zhang, Xianyang; Chen, Yuping; Pang, Chi Pui; Schally, Andrew V.; Zhang, Hao

Published in:

Proceedings of the National Academy of Sciences of the United States of America

DOI:

[10.1073/pnas.1913433117](https://doi.org/10.1073/pnas.1913433117)

IMPORTANT NOTE: You are advised to consult the publisher's version (publisher's PDF) if you wish to cite from it. Please check the document version below.

Document Version

Publisher's PDF, also known as Version of record

Publication date:

2020

[Link to publication in University of Groningen/UMCG research database](#)

Citation for published version (APA):

Xiong, X., Ke, X., Wang, L., Yao, Z., Guo, Y., Zhang, X., Chen, Y., Pang, C. P., Schally, A. V., & Zhang, H. (2020). Splice variant of growth hormone-releasing hormone receptor drives esophageal squamous cell carcinoma conferring a therapeutic target. *Proceedings of the National Academy of Sciences of the United States of America*, 117(12), 6726-6732. <https://doi.org/10.1073/pnas.1913433117>

Copyright

Other than for strictly personal use, it is not permitted to download or to forward/distribute the text or part of it without the consent of the author(s) and/or copyright holder(s), unless the work is under an open content license (like Creative Commons).

Take-down policy

If you believe that this document breaches copyright please contact us providing details, and we will remove access to the work immediately and investigate your claim.

Downloaded from the University of Groningen/UMCG research database (Pure): <http://www.rug.nl/research/portal>. For technical reasons the number of authors shown on this cover page is limited to 10 maximum.



Splice variant of growth hormone-releasing hormone receptor drives esophageal squamous cell carcinoma conferring a therapeutic target

Xiao Xiong^{a,b,1}, Xiurong Ke^{c,d,1}, Lu Wang^{a,b,1}, Zhimeng Yao^{a,b,c}, Yi Guo^e, Xianyang Zhang^{f,g,h}, Yuping Chenⁱ, Chi Pui Pang^{j,k}, Andrew V. Schally^{f,g,l,m,n,o,2}, and Hao Zhang^{a,b,p,q,2}

^aDepartment of General Surgery, First Affiliated Hospital of Jinan University, 510632 Guangzhou, Guangdong, China; ^bInstitute of Precision Cancer Medicine and Pathology, Jinan University Medical College, 510632 Guangzhou, Guangdong, China; ^cDepartment of Immunotherapy and Gastrointestinal Oncology, Affiliated Cancer Hospital of Shantou University Medical College, 515041 Shantou, Guangdong, China; ^dDepartment of Surgery, Translational Surgical Oncology, University Medical Center Groningen, University of Groningen, GZ 9713 Groningen, The Netherlands; ^eEndoscopy Center, Affiliated Cancer Hospital of Shantou University Medical College, 515041 Shantou, Guangdong, China; ^fEndocrine, Polypeptide, and Cancer Institute, Veterans Affairs Medical Center, Miami, FL 33136; ^gSouth Florida Veterans Affairs Foundation for Research and Education, Veterans Affairs Medical Center, Miami, FL 33136; ^hInterdisciplinary Stem Cell Institute, Miller School of Medicine, University of Miami, Miami, FL 33136; ⁱDepartment of Thoracic Surgery, Affiliated Cancer Hospital of Shantou University Medical College, 515041 Shantou, Guangdong, China; ^jDepartment of Ophthalmology and Visual Sciences, Chinese University of Hong Kong, 999077 Hong Kong, China; ^kJoint Shantou International Eye Center, Shantou University/Chinese University of Hong Kong, 515041 Shantou, China; ^lDepartment of Pathology, Miller School of Medicine, University of Miami, Miami, FL 33136; ^mDivision of Medical Oncology, Department of Medicine, Miller School of Medicine, University of Miami, Miami, FL 33136; ⁿDivision of Endocrinology, Diabetes and Metabolism, Department of Medicine, Miller School of Medicine, University of Miami, Miami, FL 33136; ^oSylvester Comprehensive Cancer Center, Miller School of Medicine, University of Miami, Miami, FL 33136; ^pResearch Center of Translational Medicine, Second Affiliated Hospital of Shantou University Medical College, 515041 Shantou, Guangdong, China; and ^qDepartment of Oncology, First Affiliated Hospital of Shantou University Medical College, 515041 Shantou, Guangdong, China

Contributed by Andrew V. Schally, January 31, 2020 (sent for review August 12, 2019; reviewed by Oliver Sartor and Hippokratidis Kiaris)

The extrahypothalamic growth hormone-releasing hormone (GHRH) and its cognate receptors (GHRH-Rs) and splice variants are expressed in a variety of cancers. It has been shown that the pituitary type of GHRH-R (pGHRH-R) mediates the inhibition of tumor growth induced by GHRH-R antagonists. However, GHRH-R antagonists can also suppress some cancers that do not express pGHRH-R, yet the underlying mechanisms have not been determined. Here, using human esophageal squamous cell carcinoma (ESCC) as a model, we were able to reveal that SV1, a known splice variant of GHRH-R, is responsible for the inhibition induced by GHRH-R antagonist MIA-602. We demonstrated that GHRH-R splice variant 1 (SV1) is a hypoxia-driven promoter of tumor progression. Hypoxia-elevated SV1 activates a key glycolytic enzyme, muscle-type phosphofructokinase (PFKM), through the nuclear factor kappa B (NF-κB) pathway, which enhances glycolytic metabolism and promotes progression of ESCC. The malignant actions induced by the SV1-NF-κB-PFKM pathway could be reversed by MIA-602. Altogether, our studies demonstrate a mechanism by which GHRH-R antagonists target SV1. Our findings suggest that SV1 is a hypoxia-induced oncogenic promoter which can be an alternative target of GHRH-R antagonists.

splicing isoform of GHRH-R | GHRH-R antagonist | PFKM | glycolysis | hypoxia

A aberrant RNA splicing is a common characteristic of cancers (1–3). Products of alternative splicing may display functions distinct from their canonical full-length transcripts, tending to mediate constitutively active proto-oncogenes, regulating cancer stem cells, promoting metastasis, and developing resistance to therapy (4–6). Emerging evidence strongly suggests that hypoxia is a key driver of alternative splicing in cancers (7). However, splice variants that occur during hypoxia and their roles in oncogenesis are much less understood.

A stimulatory loop formed by tumor-derived growth hormone-releasing hormone (GHRH) and its receptors has been shown to promote the growth of many cancers, which can be blocked by antagonists of GHRH's cognate receptor (GHRH-R) (8–10). Thus, the pituitary-type GHRH receptor (pGHRH-R), a canonical full-length transcript, has been detected in many human neoplastic cells and tissues, mediating the antiproliferative effects of GHRH-R antagonists (8, 9, 11–14). However, the underlying mechanisms of the antitumor activities of GHRH-R antagonists are far from being elucidated. For example, GHRH-R antagonists exhibit antitumor

effects in the subgroup of cancers that do not harbor GHRH-R overexpression, such as ovarian cancer, pancreatic cancer, and melanoma (15–17), suggesting that there may be alternative targets responding to these antagonists. The splice variant type 1 (SV1) of GHRH-R was detected in human cancers in the laboratory of one of us (A.V.S.) (18) and was demonstrated to possess ligand-dependent as well as ligand-independent activity (19). SV1 was enriched in extrapituitary neoplastic tissues (20). However, the functional role of SV1 in human malignancies is

Significance

An explanation has been lacking for the suppressive action of antagonists of growth hormone-releasing hormone receptors (GHRH-Rs) on cancers that do not express GHRH-Rs, an established target of the antagonists. We demonstrate here that esophageal squamous cell carcinoma (ESCC), a representative cancer type that barely expresses GHRH-Rs, responds to GHRH-R antagonists. Hypoxia induces GHRH-R splice variant 1 (SV1) and activates a key glycolytic enzyme. Glycolytic metabolism and tumor progression are promoted by activation of SV1 and reversed by the GHRH-R antagonist MIA-602. A high expression of SV1 in ESCC patients predicts a poor prognosis. These findings document the importance of SV1 as a target of GHRH-R antagonists and underline the therapeutic potential of GHRH-R antagonists against SV1-expressing cancers.

Author contributions: H.Z. designed research; X.X., X.K., L.W., Z.Y., Y.G., and Y.C. performed research; X.Z., C.P.P., A.V.S., and H.Z. analyzed data; A.V.S. contributed new reagents/analytic tools; X.K., A.V.S., and H.Z. wrote the paper; Y.G. and Y.C. prepared and provided patient samples; and H.Z. supervised the project.

Reviewers: O.S., Tulane University; and H.K., University of South Carolina.

Competing interest statement: The Sponsor declares a conflict of interest. A.V.S. is a coinventor on the patent for growth hormone-releasing hormone analogs, assigned to the University of Miami, Miami, FL, and the Veterans Affairs Medical Center, Miami, FL. The other authors declare no conflict of interest.

This open access article is distributed under [Creative Commons Attribution-NonCommercial-NoDerivatives License 4.0 \(CC BY-NC-ND\)](https://creativecommons.org/licenses/by-nc-nd/4.0/).

¹X.X., X.K., and L.W. contributed equally to this work.

²To whom correspondence may be addressed. Email: andrew.schally@va.gov or haozhang@jnu.edu.cn.

This article contains supporting information online at <https://www.pnas.org/lookup/suppl/doi:10.1073/pnas.1913433117/-DCSupplemental>.

First published March 10, 2020.

largely unknown. Moreover, it remains to be clarified whether SV1 acts as an alternative target of GHRH-R antagonists in a subgroup of cancers that express barely detectable levels of GHRH-R but high levels of SV1.

In this study, we showed that SV1 was induced by hypoxia in esophageal squamous cell carcinoma (ESCC), which barely harbors GHRH-R overexpression. Using cellular and animal studies, we detected an unappreciated hypoxia-SV1-inflammation-metabolic signaling in ESCC, providing evidence for the functionality of GHRH-R antagonists in a pattern common in all cancers.

Results

GHRH-R Splice Variant SV1 Mediates the Inhibitory Effect of GHRH-R Antagonist MIA-602 in Human ESCC. GHRH-R antagonists can inhibit the proliferation of a variety of human malignancies, some of which express low levels of GHRH-R (15, 21). It was claimed that the GHRH-R protein was barely detectable in human esophageal cancer (22). To investigate whether GHRH-R antagonists have inhibitory effects on human ESCC, ESCC cells KYSE150 and HKESC-2 were treated with different concentrations of MIA-602 for 48 h. MIA-602 began to exert significant inhibitory effects on cell viability at 5 μM in both cells ($P < 0.01$ for 5 μM, and $P < 0.001$ for 10 μM) (Fig. 1A and SI Appendix, Fig. S1A). Subsequently, a real-time cell analyzer (RTCA) was used to investigate the dynamic behavior of migration and invasion of KYSE150 cells exposed to MIA-602 (SI Appendix, Fig. S1B and C). We found that cell migration and invasion were both significantly inhibited by MIA-602 treatment, compared to KYSE150 cells treated with the vehicle solution. To explain these results, we examined the expression of pGHRH-R, the known target of GHRH-R antagonists, in a panel of human ESCC cells, as well as two immortalized esophageal epithelial cells (NE2 and NE083) as normal controls.

Nearly all these cells expressed very low pGHRH-R (SI Appendix, Fig. S1D), indicating that pGHRH-R is probably not the target of GHRH-R antagonists in ESCC. One of the splice variants of GHRH-R, SV1, was reported to be highly expressed in several types of cancer (23). Therefore, we determined the mRNA level for SV1 in these cells. SV1 had relatively high expression in ESCC cells, especially in HKESC-2 cells, whereas the normal cells, NE2 and NE083, expressed relatively low levels of SV1 (SI Appendix, Fig. S1D). Immunoblotting analysis further confirmed that the protein level for SV1 was higher than that of pGHRH-R in TE1, KYSE140, HKESC-2, and KYSE150 cells, with a more enriched pattern in HKESC-2 and KYSE150 cells (Fig. 1B).

We compared the levels of pGHRH-R and SV1 in 58 human primary ESCCs, and the results showed that SV1 was more abundant in tumors than pGHRH-R ($P < 0.0001$) (Fig. 1C). Moreover, a comparison between tumor and adjacent nontumor tissues revealed insignificant levels of pGHRH-R, while SV1 was significantly higher in tumor tissues ($P < 0.01$ for Fig. 1E) (Fig. 1D and E). Receiver operator characteristic (ROC) analysis identified an optimal cutoff score of 0.012 for RT-qPCR, which categorized 48.28% (28 of 58) for overexpression of SV1 (SI Appendix, Fig. S1E). SV1 expression was positively correlated with the largest tumor dimension ($P = 0.006$), pathological nodal (pN) status ($P = 0.004$), and pathological stage of tumor nodal metastasis (pTNM) ($P = 0.034$), as indicated by correlation assay (SI Appendix, Table S1), supporting that SV1 is highly expressed in human ESCC and is closely associated with disease progression. Furthermore, Kaplan–Meier survival analysis revealed a shorter overall survival (OS) for ESCC patients with increasing expression of SV1 (log-rank test, $P < 0.001$) (Fig. 1F). The multivariate Cox regression model showed that SV1 expression is an independent prognostic factor for patients with ESCC [hazard ratio (HR) = 4.269, 95% CI = 1.547–11.775, $P = 0.005$] (SI

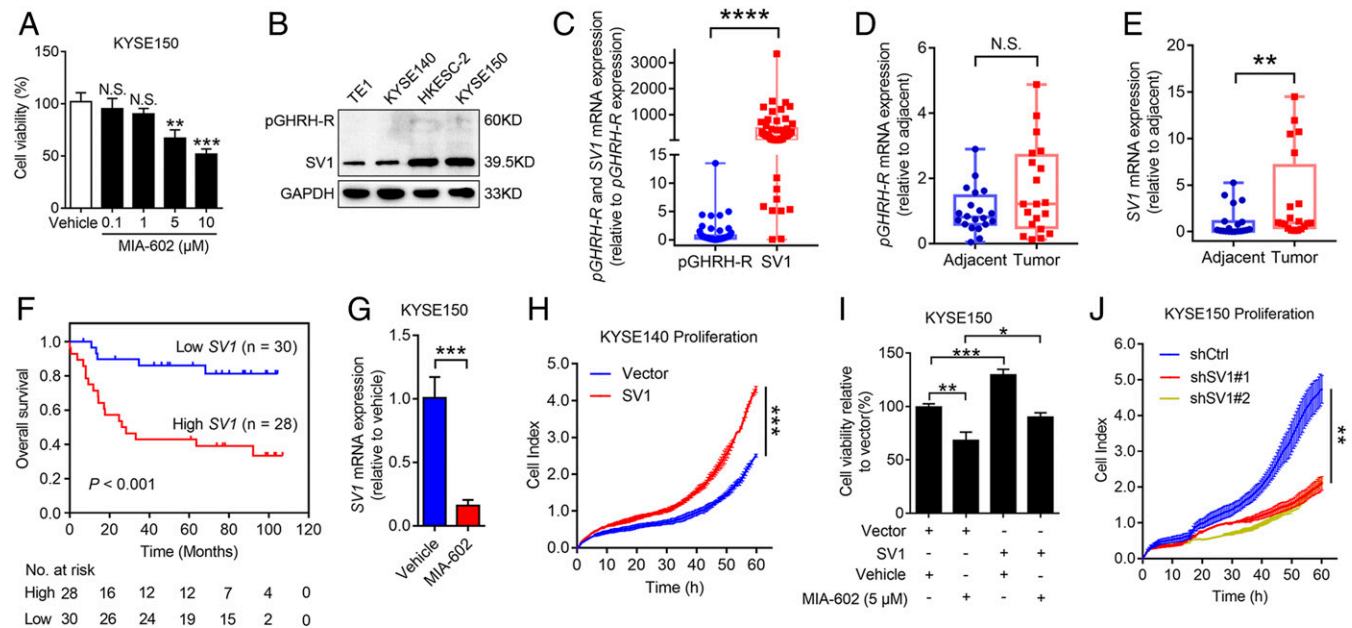


Fig. 1. MIA-602 inhibits ESCC cell progression through SV1. (A) Viability of KYSE150 cells treated with MIA-602 (0.1, 1, 5, or 10 μM) or vehicle solution for 48 h measured by cell-counting kit 8 (CCK-8) assay. (B) Protein levels of pGHRH-R and SV1 in four ESCC cells. GAPDH was used as an internal control. (C) RT-qPCR analyses of pGHRH-R and SV1 in 58 human ESCC specimens. (D and E) RT-qPCR analyses of pGHRH-R (D) and SV1 (E) in 20 human ESCC tissues and paired adjacent noncancerous tissues. (F) Kaplan–Meier analysis showing that OS was significantly better in patients with low expression of SV1 than in those with high expression. (G) KYSE150 cells treated with MIA-602 or vehicle; levels of SV1 were determined by RT-qPCR. (H) Proliferation of SV1-overexpressing KYSE140 cells monitored by the xCELLigence RTCA dual-plate (DP) system (ACEA Biosciences). Quantitative analysis of the cell index at 60 h is shown. (I) Viability of SV1-overexpressing KYSE150 cells treated with MIA-602 or vehicle measured by CCK-8 assay. (J) Proliferation of SV1-knockdown KYSE150 cells monitored by the xCELLigence RTCA DP system. Quantitative analysis of the cell index at 60 h is shown. Error bars indicate SEM. N.S., not significant; * $P < 0.05$, ** $P < 0.01$, *** $P < 0.001$, **** $P < 0.0001$ by one-way ANOVA with post hoc intergroup comparisons (A, I, and J) or student’s *t* test (C–E, G, and H); $n = 3$ in each group (A, G, and I).

Appendix, Table S2). Survival and multivariate analyses confirmed the clinical relevance of SV1 as a prognostic marker for OS in patients with ESCC.

Notably, administration of MIA-602 decreased expression of SV1 in KYSE150 and HKESC-2 cells ($P < 0.001$) (Fig. 1G and SI Appendix, Fig. S1F). These data suggest that SV1 is a potential intrinsic oncogene and a target for GHRH-R antagonists in ESCC. We then stably overexpressed SV1 in TE1 and KYSE140 cells to assess the role of SV1 ($P < 0.001$) (SI Appendix, Fig. S1G–J). Cell proliferation monitored by real-time cell analyzer (RTCA) showed that overexpression of SV1 resulted in significantly enhanced cell proliferation in both cells, compared with the vector control cells, respectively ($P < 0.001$ for Fig. 1H; $P < 0.01$ for SI Appendix, Fig. S1K) (Fig. 1H and SI Appendix, Fig. S1K). Moreover, the overexpression of SV1 successfully reversed the decrease in cell viability induced by MIA-602 in KYSE150 cells (Fig. 1I and SI Appendix, Fig. S1L and M). To confirm whether SV1 mediates the inhibitory effect of MIA-602, low SV1 expressors (TE1 and KYSE140) were treated with different concentrations of MIA-602 and subjected to cell viability assay. We found that MIA-602 did not exert significant inhibitory effects until the concentration reached 10 μM in both cells ($P < 0.05$ for 10 μM in KYSE140 cells, and $P < 0.01$ for 10 μM in TE1 cells) (SI Appendix, Fig. S2A and B), which was higher than the concentration of 5 μM MIA-602 required in high SV1 expressors (KYSE150 and HKESC-2) (Fig. 1A and SI Appendix, Fig. S1A). However, inhibition of viability was observed in KYSE140 cells overexpressing SV1 with as little as 1 μM MIA-602 ($P < 0.01$ for 1 and 2.5 μM , and $P < 0.001$ for 5 μM in KYSE140-SV1 cells) (SI Appendix, Fig. S2C). In addition, results from colony formation assay showed that a concentration of 2.5 μM MIA-602 could significantly reduce the number of colonies of KYSE150 cells but not that of KYSE140 cells ($P < 0.05$ for 1 μM in KYSE150 cells and 5 μM in KYSE140 cells; $P < 0.01$ for 2.5 and 5 μM in KYSE150 cells) (SI Appendix, Fig. S2D). Furthermore, stable KYSE150 cells expressing SV1 shRNA were established for detecting the role of SV1 with or without MIA-602 treatment ($P < 0.001$ for SI Appendix, Fig. S2E) (SI Appendix, Fig. S2E and F). Cell proliferation monitored by RTCA showed that knock-down of SV1 decreased cell proliferation in KYSE150 cells ($P < 0.01$) (Fig. 1J). MIA-602 did not exert significant inhibitory effects even when the concentration reached 5 μM in SV1-knockdown KYSE150 cells (SI Appendix, Fig. S2G). Collectively, these results confirm that SV1 was the target of the GHRH-R antagonist MIA-602 and was able to mediate MIA-602's inhibitory effects in human ESCC.

SV1 Induced by Hypoxia Contributes to Aberrant Glycolysis. Recently, hypoxia within tumor tissues was indicated as a driver of alternative splicing that contributes to tumorigenic development (24). To test the hypothesis that hypoxia in ESCC leads to alternative splicing of pGHRH-R into SV1, we examined the transcript of SV1 on ESCC cells grown under normoxia and hypoxia. A significant increase in SV1 expression was seen in KYSE140 and TE1 cells grown under hypoxia ($P < 0.0001$ for both) (Fig. 2A and SI Appendix, Fig. S3A). This finding supports the speculation that hypoxia induces elevation of SV1 through driving the alternative splicing of GHRH-R (Fig. 2B). Hypoxic cancer cells are often forced into aberrantly increased glycolysis (25). We observed significantly higher lactate production and glucose uptake in ESCC cells under hypoxia, compared with cells grown under normoxia (SI Appendix, Fig. S3B and C). Results from gene set enrichment analysis (GSEA) using microarray dataset GSE47404 showed that the levels of mRNA for SV1 significantly correlated with the glycolytic pathways in ESCC ($P = 0.035$) (Fig. 2C). These results suggest that SV1 was induced by hypoxia and resulted in promotion of glycolysis in ESCC. To validate whether GHRH-R antagonists could

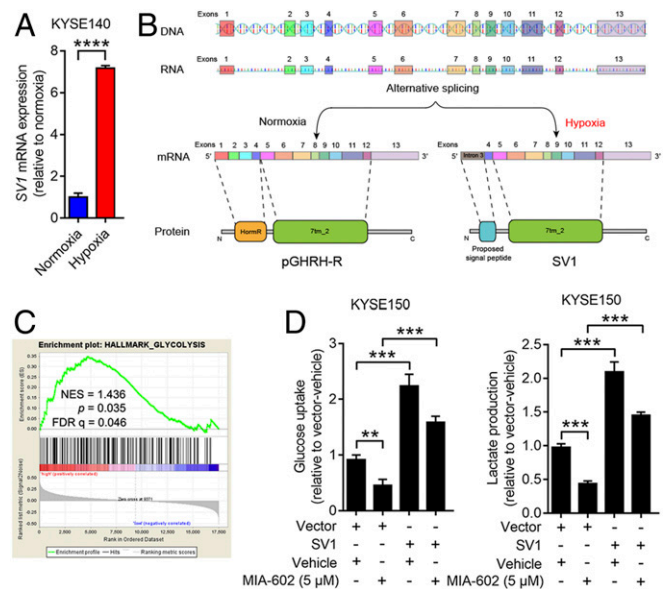


Fig. 2. Hypoxia-induced SV1 enhances glycolysis. (A) Expression of SV1 measured by RT-qPCR in KYSE140 cells pretreated at normoxia or hypoxia for 24 h. (B) Schematic of full-length GHRH-R and SV1 structures (DNA, mRNA, and protein). (C) SV1 expression positively correlates with the glycolysis pathway according to a GSEA plot (GSE47404, $n = 71$). (D) Glucose uptake and lactate production measured in SV1-overexpressing cells treated with MIA-602 or vehicle. Error bars indicate SEM. *** $P < 0.01$, **** $P < 0.0001$ by student's t test (A) or one-way ANOVA with post hoc intergroup comparisons (D); $n = 3$ in each group (A and D).

interfere with the glycolysis enhanced by SV1, we evaluated the glycolytic activities of ESCC cells after treatment with MIA-602. Exposure to MIA-602 significantly decreased lactate production and glucose uptake of KYSE150 cells, and similar results were obtained in HKESC-2 cells ($P < 0.001$ for all) (SI Appendix, Fig. S3D and E). Importantly, the overexpression of SV1 further reversed the decreased glycolysis caused by treatment with MIA-602 (Fig. 2D). Thus, expression of SV1 in ESCC was induced by hypoxia and resulted in enhanced glycolysis, which could be inhibited by GHRH-R antagonists.

SV1 Regulates Glycolytic Metabolism Activity through NF- κ B-PFKM Axis.

We further investigated the underlying mechanisms by which SV1 regulates glycolytic metabolism in ESCC cells. RT-qPCR was conducted to detect the expression of key enzymes regulating glycolysis in KYSE140 cells overexpressing SV1. Among the enzymes screened, muscle-type phosphofructokinase (PFKM) was the only one elevated by overexpression of SV1, and similar results were observed in TE1 cells stably overexpressing SV1 ($P < 0.001$ for both) (Fig. 3A and SI Appendix, Fig. S4A). Expression of PFKM in KYSE150 and HKESC-2 cells was obviously decreased by treatment with MIA-602, as revealed by RT-qPCR and immunoblotting analyses ($P < 0.01$ for Fig. 3B and SI Appendix, Fig. S4B) (Fig. 3B and C and SI Appendix, Fig. S4B and C), indicating that PFKM is a critical downstream molecule induced by SV1. Furthermore, the overexpression of SV1 reversed the expression of PFKM that was suppressed by treatment with MIA-602 (Fig. 3D and SI Appendix, Fig. S4D). TE1 and KYSE140 cells stably overexpressing PFKM were subjected to RTCA assays, and increased proliferation was observed in both cells (SI Appendix, Fig. S4E–H). Moreover, the lactate production and glucose uptake that were reduced by MIA-602 could be reversed by PFKM overexpression (Fig. 3E). These findings collectively suggest that PFKM is a functional downstream target of SV1 to regulate glycolytic metabolism.

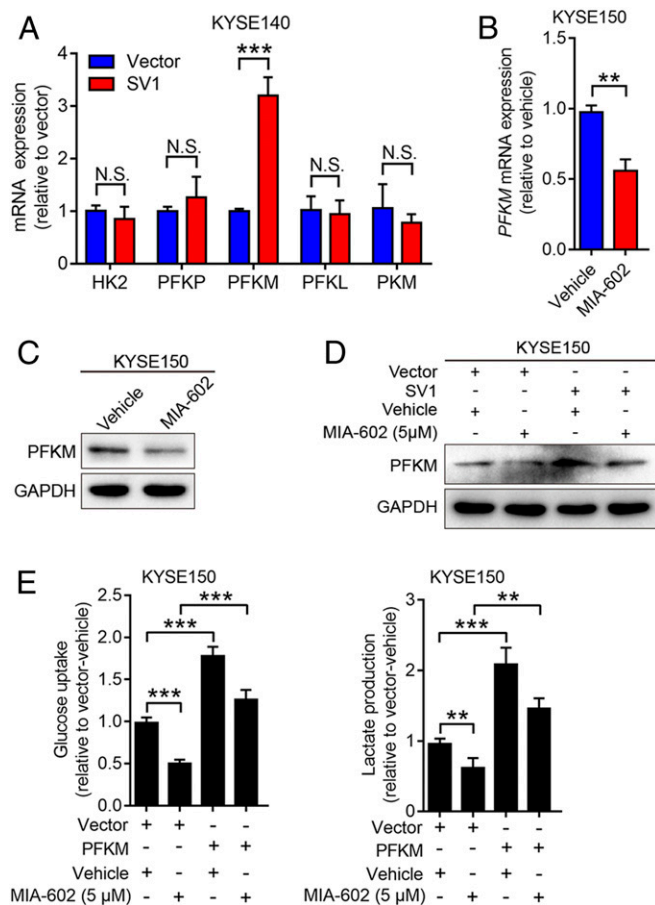


Fig. 3. SV1 regulates glycolysis through PFKM. (A) mRNA levels of five key glycolytic enzymes (*HK2*, three isoforms of *PFK*, and *PKM*) in SV1-overexpressing KYSE140 cells determined by RT-qPCR. (B and C) Expression of PFKM in KYSE150 cells treated with MIA-602 for 48 h and analyzed by RT-qPCR (B) and immunoblotting (C). GAPDH was used as an internal control. (D) Expression of PFKM in SV1-overexpressing cells treated with MIA-602 or vehicle and analyzed by immunoblotting. GAPDH was used as an internal control. (E) Glucose uptake and lactate production measured in PFKM-overexpressing cells treated with MIA-602 or vehicle. Error bars indicate SEM. N.S., not significant; ** $P < 0.01$, *** $P < 0.001$ by student's *t* test (A and B) or one-way ANOVA with post hoc intergroup comparisons (E); $n = 3$ in each group (A, B, and E).

We previously demonstrated that nuclear factor kappa B (NF- κ B) mediates the action of GHRH-R antagonists to inhibit the growth of gastric cancer (14). NF- κ B signaling not only participates in the progression of ESCC but also stimulates glycolytic activity (26, 27). Given the facts that NF- κ B is a well-known transcription factor and that we observed alteration of PFKM transcription in ESCC cells, we wondered if the regulation of PFKM transcription by SV1 was NF- κ B dependent. Bioinformatic analysis revealed the presence of binding sites for NF- κ B p65 in the PFKM promoter region, suggesting that NF- κ B p65 might regulate the transcription of PFKM (Fig. 4A). Stable cells expressing p65 or p65 shRNA were established for detecting the involvement of p65 in glycolytic metabolism regulated by SV1-PFKM (SI Appendix, Fig. S5 A and B). PFKM transcription increased in p65-overexpressed cells, but decreased in p65-silenced cells ($P < 0.01$ for Fig. 4B; $P < 0.001$ for SI Appendix, Fig. S5C) (Fig. 4B and SI Appendix, Fig. S5C). Luciferase assay revealed that forced expression of p65 significantly increased the activity of the PFKM promoter, whereas knockdown of p65 decreased it ($P < 0.01$ for both) (Fig. 4C and SI Appendix, Fig. S5D). Next, we found that p65 could reverse the PFKM promoter activity,

lactate production, and glucose uptake that were decreased by MIA-602 treatment (Fig. 4D and E). Immunoblotting analysis showed that the NF- κ B pathway was suppressed by MIA-602 treatment (SI Appendix, Fig. S5E). Moreover, activation of the canonical NF- κ B pathway by stimulation with tumor necrosis factor alpha (TNF- α) resulted in increased nuclear translocation of p65 in ESCC cells, whereas MIA-602 treatment dramatically attenuated the translocation of p65 to the nucleus (SI Appendix, Fig. S5F), demonstrating a strong blocking effect of MIA-602 on the activation of NF- κ B signaling. Further, overexpression of SV1 reversed the suppression of the NF- κ B pathway that was conferred by MIA-602 treatment (Fig. 4F). The nuclear translocation of p65 was blocked by MIA-602, but reappeared after SV1 overexpression (Fig. 4G). Taken together, these results strongly support involvement of the NF- κ B pathway in glycolytic metabolism regulated by SV1-PFKM.

MIA-602 Inhibits Tumor Growth by Targeting SV1-NF- κ B-PFKM In Vivo. To demonstrate that GHRH-R antagonists are capable of inhibiting tumor growth by targeting the SV1-PFKM axis in vivo, we established xenograft tumor models by subcutaneous (s.c.) inoculation of KYSE150-SV1, KYSE150-PFKM, and KYSE150-Vector cells into nude mice (Fig. 5A). As demonstrated by the tumor growth curves, SV1-overexpressing tumor cells exhibited enhanced growth ($P < 0.0001$) (Fig. 5B). Administration of MIA-602 remarkably inhibited tumor growth in mice bearing KYSE150-Vector cells ($P < 0.001$) (Fig. 5B). Of note, both SV1 and PFKM overexpression partially counteracted the inhibitory effects on tumor growth induced by MIA-602 (Fig. 5B). Corresponding tumor sizes and weights were obtained on day 28 (Fig. 5C). Importantly, the effective up-regulation of the mRNA for SV1 and protein levels in KYSE150-SV1 cells was confirmed in harvested tumors ($P < 0.0001$ for Fig. 5D) (Fig. 5D and E). Inhibition of tumor cell proliferation by MIA-602 treatment was also reflected by immunohistochemical staining for the proliferation marker Ki67 (Fig. 5F). The down-regulation of the PFKM and NF- κ B pathways by MIA-602 treatment was also demonstrated by immunohistochemistry (Fig. 5F). Thus, MIA-602 inhibits tumor growth mediated by SV1-NF- κ B-PFKM signaling in vivo.

Discussion

In this study, we provided experimental and clinical evidence to demonstrate the significance of the GHRH-R splicing variant SV1 in the progression and prognosis of ESCC. Both in vitro and in vivo studies indicate that hypoxia-induced SV1 promotes ESCC through a previously unknown mechanism that activates the inflammation-metabolic signaling of NF- κ B-PFKM. Our results document that GHRH-R antagonists exert inhibitory effects by targeting SV1 in a subgroup of cancers that do not harbor overexpression of GHRH-R.

The presence of pGHRH-R and its response to GHRH-R antagonists had been previously demonstrated in various human cancers, including breast, prostatic, and gastric cancers, and renal cell carcinoma (11, 13, 14, 28). However, there also exist some tumor types which do not express high levels of pGHRH-R but which respond to GHRH and GHRH-R antagonists (15–17), implying that there are alternative targets. The splice variant SV1 has the greatest structural similarity to pGHRH-R, is widely expressed by different primary human and experimental cancers, and is considered the most likely functional splice variant mediating the effects of GHRH analogs in tumors (9, 20). ESCC is one of the most common malignancies of the digestive tract, with a poor prognosis and a high mortality rate (29–32). By analyzing a large group of patients and cells, we revealed a very low level of mRNA for pGHRH-R but a highly enriched SV1 transcript in ESCC. Furthermore, the significance of SV1 in malignant progression and clinical outcomes had not been appreciated previously. By analysis of a patient cohort with follow-up of clinicopathological

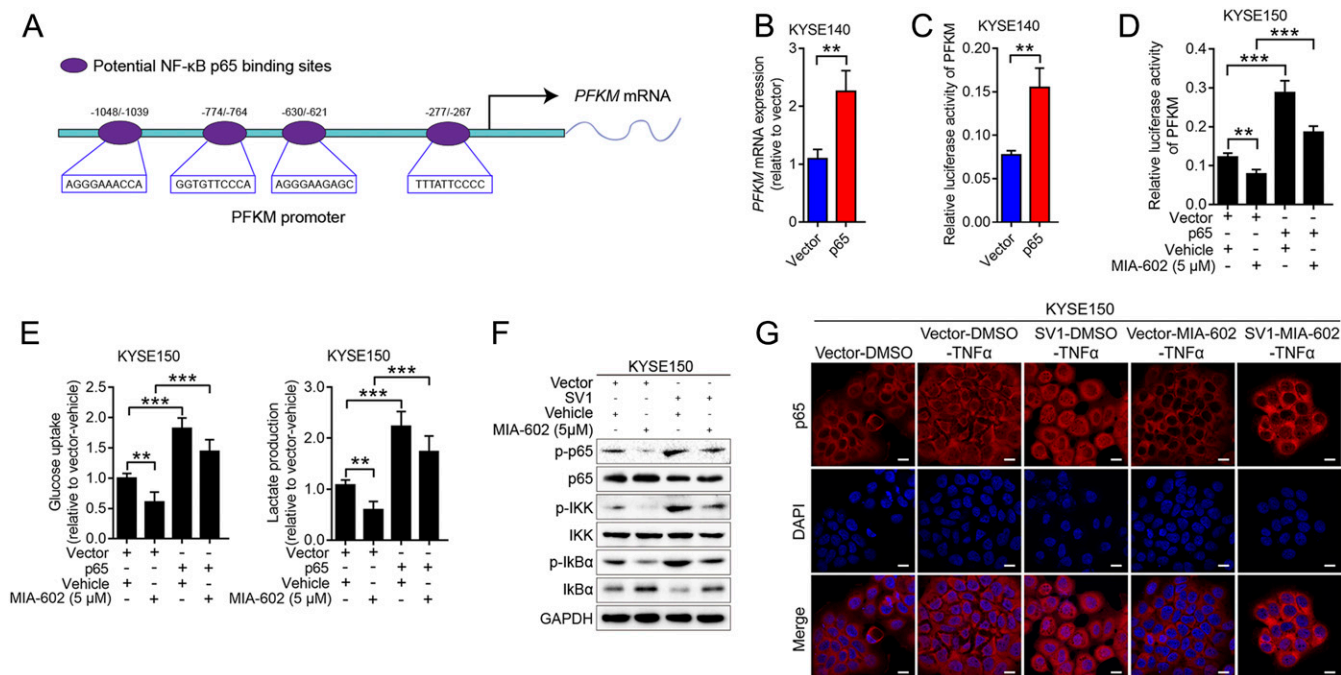


Fig. 4. Cancer cell glycolysis regulated by SV1-PFKM is NF- κ B dependent. (A) Graphic representation of the four putative NF- κ B p65 binding sites in the PFKM proximal promoter. (B) mRNA level of *PFKM* in p65-overexpressing cells determined by RT-qPCR. (C) The PFKM luciferase reporter was transfected into KYSE140-p65 cells and control vector cells, and the relative PFKM promoter activities were measured based on the luciferase activities. (D and E) Relative PFKM promoter activities (D), glucose uptake, and lactate production (E) measured in p65-overexpressing cells treated with MIA-602 or vehicle. (F) SV1-overexpressing cells treated with MIA-602 or vehicle before being harvested for immunoblot analyses of the labeled antigens. GAPDH was used as an internal control. (G) Subcellular localization of p65 (red) in KYSE150 cells as analyzed by immunofluorescence assay. Nuclei stained with DAPI (blue). Error bars indicate SEM. $**P < 0.01$, $***P < 0.001$ by student's *t* test (B and C) or one-way ANOVA with post hoc intergroup comparisons (D and E); $n = 3$ in each group (B–E). (Scale bars, 10 μ m.)

information, the overexpression of *SV1* was identified as an independent prognostic predictor for patients with ESCC. Future studies are required to confirm these findings across the spectrum of multiple cohorts in multiple centers. These data predict the contribution of *SV1* to progression of ESCC and emphasize *SV1* as a potential therapeutic target in human cancers. Combining these results with the finding that MIA-602, a highly potent GHRH-R antagonist, exerts antineoplastic effects in ESCC cells, we can consider ESCC a representative model to demonstrate that *SV1* mediates the therapeutic effects of GHRH-R antagonists in human tumors with low expression of pGHRH-R. The expression of pGHRH-R and *SV1*, as well as the effects of GHRH-R antagonists against squamous-cell carcinoma, were previously largely unknown. Our evidence indicates that *SV1* is the main form of GHRH-R in squamous cell carcinomas that respond to GHRH-R antagonists (22, 33). Our studies also indicate that in squamous cell carcinoma *SV1* can be used as a therapeutic target shared with pGHRH-R.

Compared with the canonical full-length GHRH-R, the first three exons in *SV1* are replaced by a fragment of retained intron 3; the rest of the coding region of *SV1* is identical with that of pGHRH-R. The protein product of *SV1* differs from the full-length receptor in a small part of the N-terminal extracellular domain, which could serve as a proposed signal peptide (18). In this study, we found that increasing splicing of pGHRH-R into *SV1* was induced by hypoxia in ESCC. Alternative splicing in tumor cells is one of the cellular adaptations that are largely promoted by the hypoxic microenvironment in solid tumors. Given that intron-containing mRNAs are the most frequent splicing products that result from hypoxia (34–36), it is reasonable to predict that the enhanced expression of *SV1* in ESCC is induced by hypoxia. We also demonstrated that *SV1* in ESCC

cells possesses both ligand-dependent and ligand-independent functions. Cells transfected with *SV1* expression vectors exhibited a strong induction of cell proliferation, migration, and invasion. Overexpression of *SV1* is sufficient to abrogate suppression of the NF- κ B pathway that was induced by MIA-602 treatment. This supports the view that *SV1* acts as a tumor promoter intrinsically in the absence of the ligand GHRH. More importantly, our results show that *SV1* modulates the inflammation-metabolic signaling of NF- κ B–PFKM to sustain high proliferation rates of tumor cells, implying that isoforms of GHRH-R form a complex regulatory network in human malignancy. Furthermore, we provide both *in vitro* and *in vivo* data showing that *SV1* promotes tumor growth and that this effect can be reversed by the GHRH-R antagonist MIA-602, supporting the ligand-dependent and ligand-independent functions of *SV1* (19, 37, 38).

Widespread changes in gene expression, including alternative splicing of metabolic enzymes, have been implicated in the process of hypoxia-induced metabolic adaptation of cancer cells (34, 39, 40). In this study, we defined a previously undocumented molecular pathway by which hypoxia acts through a splice variant of a membrane hormone receptor to elevate the glycolytic enzyme PFKM, indicating that hypoxia-induced metabolic changes in cancer cells may involve a more complex regulation. Increasing evidence has shown that cancer cells exhibit a metabolic reprogramming toward aerobic glycolysis to ensure high levels of energy supply and biomass production to support tumor growth and progression (41, 42). Hypoxia-induced *SV1* triggers a PFKM-mediated metabolic rewiring, as evidenced by enhanced glucose consumption and the simultaneously increased production of lactate. Increased glucose flux fuels the proliferation of cancer cells. Increased lactate secretion is associated with an acidic tumor microenvironment that contributes to enhanced invasiveness (43, 44).

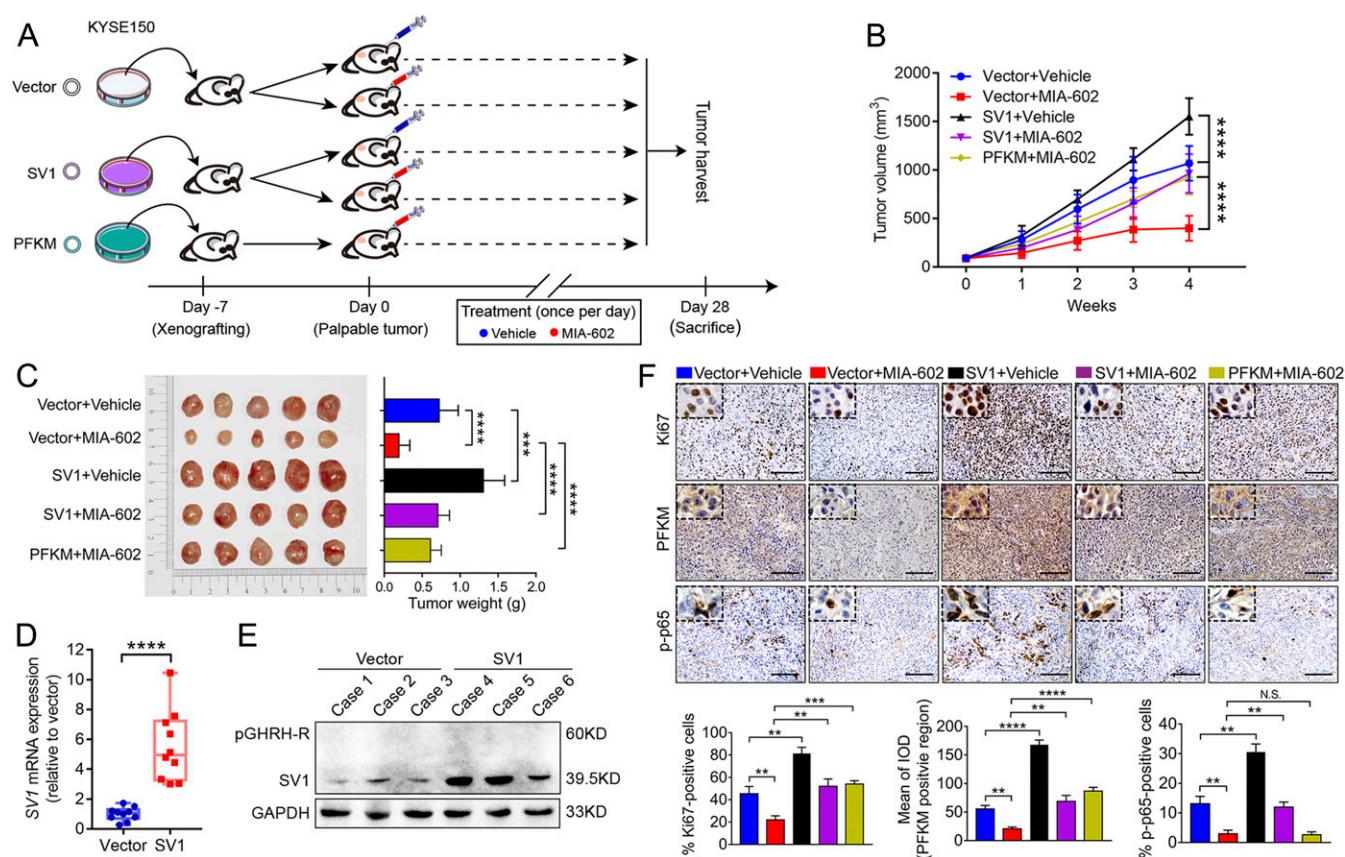


Fig. 5. MIA-602 suppresses SV1-mediated ESCC tumor growth in vivo. (A) Scheme indicating the timing of xenografting and longitudinal treatment. (B) Tumor growth curves of KYSE150-SV1 and KYSE150-PFKM cells treated with MIA-602 or vehicle. (C) Tumors harvested on day 28 (Left) and average weights of tumors (Right). (D and E) Expression of SV1 detected by RT-qPCR (D) and immunoblotting (E) in tumor tissues from mice bearing KYSE150-SV1 or KYSE150-Vector cells. GAPDH was used as an internal control. (F) Representative images of immunohistochemistry of Ki67, PFKM, and p-p65 in tumor sections derived from mice (Top). Plots of percentages or mean of integrated optical density (IOD) of five groups of cells expressing the indicated proteins (Bottom). Error bars indicate SEM. N.S., not significant; ** $P < 0.01$, *** $P < 0.001$, **** $P < 0.0001$ by one-way ANOVA with post hoc intergroup comparisons; $n = 10$ in each group. (Scale bars, 50 μm .)

Our findings illustrate that SV1 promotes growth and metastasis of cancer through the induction of PFKM and aberrant glycolytic metabolism.

PFKM is one of the isozymes encoded by phosphofructokinase-1 (PFK-1), which catalyzes the second irreversible step in the glycolytic pathway by phosphorylating fructose-6-phosphate to form fructose-1, 6-bisphosphate (45, 46). It is the key regulatory enzyme mediating changes in glycolysis in cancer cells (45, 46). However, the importance of PFKM and its upstream regulators in tumorigenic progression remains largely unknown. We found that SV1 up-regulates PFKM in an NF- κ B-dependent manner, supporting the view that SV1 is a key regulator and that NF- κ B is a previously unrecognized transcription activator of PFKM. Glycolytic inhibitors, including pharmaceuticals that directly inhibit PFK-1, have been considered for cancer treatment. One major challenge of these inhibitors is their potential toxicity to certain normal tissues that also use glucose as their main energy source, such as brain, retinae, and testis (47). Interestingly, MIA-602 effectively decreased PFKM in both ESCC cells and ESCC-bearing mice. Given that the side effects of GHRH analogs are minimal (9, 48), we propose that GHRH-R antagonists might be more practically used as glycolytic inhibitors to treat cancers. However, this finding needs to be validated clinically.

In summary, these studies addressed a long-standing question, which is why subgroups of cancers with low expression of pGHRH-R respond to GHRH-R antagonists, establishing the role of SV1 as a hypoxia-driven spliced tumor promoter and as a mediator

linking hypoxia and glycolysis in cancer. MIA-602 counteracts NF- κ B-PFKM signaling suppressing aberrant glycolytic metabolism and tumor progression in vitro and in vivo by inhibiting SV1. SV1 is highlighted as a therapeutic target of GHRH-R antagonists in cancer. Demonstration of the importance of SV1 may shed light on how to select the appropriate patients with cancers which do not harbor GHRH-R overexpression for the use of GHRH-R antagonists.

Materials and Methods

Clinical Patients and Samples. All specimens of primary ESCC, along with adjacent noncancerous tissues, were from patients who had undergone radical surgery without preoperative therapy at the Cancer Hospital of Shantou University Medical College (CHSUMC) during 2011–2012. All samples were histopathologically and clinically confirmed as ESCC. Fifty-eight surgical samples of ESCC were freshly collected by snap-freezing in liquid nitrogen in a tumor-banking protocol, and were used for RNA extraction and RT-qPCR analysis. All clinical research protocols of this study were reviewed and approved by the Ethics Committee of Shantou University Medical College. Written informed consent was obtained from patients in accordance with the Declaration of Helsinki.

Peptides and Chemicals. GHRH-R antagonist MIA-602 was synthesized in the laboratory of A.V.S in Miami. For in vitro experiments, the peptides were dissolved in dimethyl sulfoxide (DMSO) to form a 5-mM solution, and further diluted with cell culture medium to the concentration indicated. The final concentration of DMSO in the culture medium was 0.1% (vol/vol). For the in vivo study, animals were treated daily by s.c. administration of

5 µg GHRH-R antagonist MIA-602 or vehicle solutions (0.1% DMSO in 5.5% mannitol; Sigma).

Tumor Xenografts. A total of 5×10^5 KYSE150 cells was resuspended in 100 µL phosphate-buffered saline (PBS) and injected s.c. into the flanks of 6-wk-old female nude mice (Vital River Laboratory Animal Technology Co.). Animal experiments were reviewed and approved by the Ethics Committee of Shantou University Medical College.

Additional materials and methods are described in *SI Appendix, Materials and Methods*.

1. S. Oltean, D. O. Bates, Hallmarks of alternative splicing in cancer. *Oncogene* **33**, 5311–5318 (2014).
2. Y. Lin *et al.*, Evaluation of salivary exosomal chimeric *GOLM1-NAA35* RNA as a potential biomarker in esophageal carcinoma. *Clin. Cancer Res.* **25**, 3035–3045 (2019).
3. H. Zhang *et al.*, Aberrant chimeric RNA *GOLM1-MAK10* encoding a secreted fusion protein as a molecular signature for human esophageal squamous cell carcinoma. *Oncotarget* **4**, 2135–2143 (2013).
4. C. R. Sibley, L. Blazquez, J. Ule, Lessons from non-canonical splicing. *Nat. Rev. Genet.* **17**, 407–421 (2016).
5. H. Dvinge, E. Kim, O. Abdel-Wahab, R. K. Bradley, RNA splicing factors as oncoproteins and tumour suppressors. *Nat. Rev. Cancer* **16**, 413–430 (2016).
6. J. M. Heddeston *et al.*, Hypoxia inducible factors in cancer stem cells. *Br. J. Cancer* **102**, 789–795 (2010).
7. A. Kanopka, Cell survival: Interplay between hypoxia and pre-mRNA splicing. *Exp. Cell Res.* **356**, 187–191 (2017).
8. N. Barabutis, A. V. Schally, Growth hormone-releasing hormone: Extracranial effects in physiology and pathology. *Cell Cycle* **9**, 4110–4116 (2010).
9. A. V. Schally, J. L. Varga, J. B. Engel, Antagonists of growth-hormone-releasing hormone: An emerging new therapy for cancer. *Nat. Clin. Pract. Endocrinol. Metab.* **4**, 33–43 (2008).
10. T. Villanova *et al.*, Antagonists of growth hormone-releasing hormone (GHRH) inhibit the growth of human malignant pleural mesothelioma. *Proc. Natl. Acad. Sci. U.S.A.* **116**, 2226–2231 (2019).
11. L. Muñoz-Moreno, A. V. Schally, J. C. Prieto, M. J. Carmena, A. M. Bajo, Growth hormone-releasing hormone receptor antagonists modify molecular machinery in the progression of prostate cancer. *Prostate* **78**, 915–926 (2018).
12. C. D. Fahrenholtz *et al.*, Preclinical efficacy of growth hormone-releasing hormone antagonists for androgen-dependent and castration-resistant human prostate cancer. *Proc. Natl. Acad. Sci. U.S.A.* **111**, 1084–1089 (2014).
13. R. Perez *et al.*, Antagonists of growth hormone-releasing hormone suppress in vivo tumor growth and gene expression in triple negative breast cancers. *Oncotarget* **3**, 988–997 (2012).
14. J. Gan *et al.*, Growth hormone-releasing hormone receptor antagonists inhibit human gastric cancer through downregulation of PAK1-STAT3/NF-κB signaling. *Proc. Natl. Acad. Sci. U.S.A.* **113**, 14745–14750 (2016).
15. Z. Rekasi *et al.*, Antagonists of growth hormone-releasing hormone and vasoactive intestinal peptide inhibit tumor proliferation by different mechanisms: Evidence from in vitro studies on human prostatic and pancreatic cancers. *Endocrinology* **141**, 2120–2128 (2000).
16. L. Szalontay *et al.*, Novel GHRH antagonists suppress the growth of human malignant melanoma by restoring nuclear p27 function. *Cell Cycle* **13**, 2790–2797 (2014).
17. A. Klukovits *et al.*, Novel antagonists of growth hormone-releasing hormone inhibit growth and vascularization of human experimental ovarian cancers. *Cancer* **118**, 670–680 (2012).
18. Z. Rekasi, T. Czompoly, A. V. Schally, G. Halmos, Isolation and sequencing of cDNAs for splice variants of growth hormone-releasing hormone receptors from human cancers. *Proc. Natl. Acad. Sci. U.S.A.* **97**, 10561–10566 (2000).
19. H. Kiaris *et al.*, Ligand-dependent and -independent effects of splice variant 1 of growth hormone-releasing hormone receptor. *Proc. Natl. Acad. Sci. U.S.A.* **100**, 9512–9517 (2003).
20. A. Havt *et al.*, The expression of the pituitary growth hormone-releasing hormone receptor and its splice variants in normal and neoplastic human tissues. *Proc. Natl. Acad. Sci. U.S.A.* **102**, 17424–17429 (2005).
21. K. Szepeshazi *et al.*, Antagonists of growth hormone-releasing hormone (GH-RH) inhibit in vivo proliferation of experimental pancreatic cancers and decrease IGF-II levels in tumours. *Eur. J. Cancer* **36**, 128–136 (2000).
22. F. Hohla *et al.*, Differential expression of GHRH receptor and its splice variant 1 in human normal and malignant mucosa of the oesophagus and colon. *Int. J. Oncol.* **33**, 137–143 (2008).
23. S. Belyei *et al.*, GHRH antagonists reduce the invasive and metastatic potential of human cancer cell lines in vitro. *Cancer Lett.* **293**, 31–40 (2010).

Data Availability Statement. All data discussed in the paper are available in the manuscript or *SI Appendix*.

ACKNOWLEDGMENTS. This work was supported by a grant in part from the National Natural Science Foundation of China (81773087 and 81572876 to H.Z.), the Science and Technology Planning Project of Guangdong Province of China (2019A030317024 to H.Z.), and the Shantou University-Technion Research Program (43209504 to H.Z.). The work in Miami, Florida, was supported by the Medical Research Service of the Department of Veterans Affairs and the University of Miami Miller School of Medicine, Sylvester Comprehensive Cancer Center (to A.V.S.).

24. E. Bowler *et al.*, Hypoxia leads to significant changes in alternative splicing and elevated expression of CLK splice factor kinases in PC3 prostate cancer cells. *BMC Cancer* **18**, 355 (2018).
25. U. E. Martinez-Outschoorn, M. Peiris-Pagés, R. G. Pestell, F. Sotgia, M. P. Lisanti, Cancer metabolism: A therapeutic perspective. *Nat. Rev. Clin. Oncol.* **14**, 113 (2017).
26. C. Lin *et al.*, Nkx2-8 downregulation promotes angiogenesis and activates NF-κB in esophageal cancer. *Cancer Res.* **73**, 3638–3648 (2013).
27. K. Kawauchi, K. Araki, K. Tobiume, N. Tanaka, p53 regulates glucose metabolism through an IKK-NF-κappaB pathway and inhibits cell transformation. *Nat. Cell Biol.* **10**, 611–618 (2008).
28. G. Halmos *et al.*, Human renal cell carcinoma expresses distinct binding sites for growth hormone-releasing hormone. *Proc. Natl. Acad. Sci. U.S.A.* **97**, 10555–10560 (2000).
29. H. Dong *et al.*, Reciprocal androgen receptor/interleukin-6 crosstalk drives oesophageal carcinoma progression and contributes to patient prognosis. *J. Pathol.* **241**, 448–462 (2017).
30. R. L. Siegel, K. D. Miller, A. Jemal, Cancer statistics, 2018. *CA Cancer J. Clin.* **68**, 7–30 (2018).
31. Y. Feng *et al.*, Metformin promotes autophagy and apoptosis in esophageal squamous cell carcinoma by downregulating Stat3 signaling. *Cell Death Dis.* **5**, e1088 (2014).
32. L. Wang *et al.*, Metformin induces human esophageal carcinoma cell pyroptosis by targeting the miR-497/PELP1 axis. *Cancer Lett.* **450**, 22–31 (2019).
33. N. Dioufa *et al.*, Growth hormone-releasing hormone receptor splice variant 1 is frequently expressed in oral squamous cell carcinomas. *Horm. Cancer* **3**, 172–180 (2012).
34. L. K. Brady *et al.*, Transcriptome analysis of hypoxic cancer cells uncovers intron retention in EIF2B5 as a mechanism to inhibit translation. *PLoS Biol.* **15**, e2002623 (2017).
35. J. Han *et al.*, Hypoxia is a key driver of alternative splicing in human breast cancer cells. *Sci. Rep.* **7**, 4108 (2017).
36. H. Dvinge, R. K. Bradley, Widespread intron retention diversifies most cancer transcriptomes. *Genome Med.* **7**, 45 (2015).
37. H. Kiaris *et al.*, Expression of a splice variant of the receptor for GHRH in 3T3 fibroblasts activates cell proliferation responses to GHRH analogs. *Proc. Natl. Acad. Sci. U.S.A.* **99**, 196–200 (2002).
38. N. Barabutis *et al.*, Stimulation of proliferation of MCF-7 breast cancer cells by a transfected splice variant of growth hormone-releasing hormone receptor. *Proc. Natl. Acad. Sci. U.S.A.* **104**, 5575–5579 (2007).
39. G. L. Semenza, HIF-1 mediates metabolic responses to intratumoral hypoxia and oncogenic mutations. *J. Clin. Invest.* **123**, 3664–3671 (2013).
40. H. R. Christofk *et al.*, The M2 splice isoform of pyruvate kinase is important for cancer metabolism and tumour growth. *Nature* **452**, 230–233 (2008).
41. W. H. Koppenol, P. L. Bounds, C. V. Dang, Otto Warburg's contributions to current concepts of cancer metabolism. *Nat. Rev. Cancer* **11**, 325–337 (2011).
42. M. G. Vander Heiden, L. C. Cantley, C. B. Thompson, Understanding the Warburg effect: The metabolic requirements of cell proliferation. *Science* **324**, 1029–1033 (2009).
43. G. De Preter *et al.*, Inhibition of the pentose phosphate pathway by dichloroacetate unravels a missing link between aerobic glycolysis and cancer cell proliferation. *Oncotarget* **7**, 2910–2920 (2016).
44. M. V. Libertini, J. W. Locasale, Correction to: 'The Warburg effect: How does it benefit cancer cells?': [Trends in Biochemical Sciences, 41 (2016) 211]. *Trends Biochem. Sci.* **41**, 287 (2016).
45. F. Zhang *et al.*, Phosphofructokinase-1 negatively regulates neurogenesis from neural stem cells. *Neurosci. Bull.* **32**, 205–216 (2016).
46. W. Yi *et al.*, Phosphofructokinase 1 glycosylation regulates cell growth and metabolism. *Science* **337**, 975–980 (2012).
47. H. Pelicano, D. S. Martin, R. H. Xu, P. Huang, Glycolysis inhibition for anticancer treatment. *Oncogene* **25**, 4633–4646 (2006).
48. M. Zarandi *et al.*, Synthesis and structure-activity studies on novel analogs of human growth hormone releasing hormone (GHRH) with enhanced inhibitory activities on tumor growth. *Peptides* **89**, 60–70 (2017).