



University of Groningen

Structural brain alterations and their association with cognitive function and symptoms in Attention-deficit/Hyperactivity Disorder families

Jiang, Wenhao; Duan, Kuaikuai; Rootes-Murdy, Kelly; Hoekstra, Pieter J; Hartman, Catharina A; Oosterlaan, Jaap; Heslenfeld, Dirk; Franke, Barbara; Buitelaar, Jan; Arias-Vasquez, Alejandro

Published in:
NeuroImage. Clinical

DOI:
[10.1016/j.nicl.2020.102273](https://doi.org/10.1016/j.nicl.2020.102273)

IMPORTANT NOTE: You are advised to consult the publisher's version (publisher's PDF) if you wish to cite from it. Please check the document version below.

Document Version
Publisher's PDF, also known as Version of record

Publication date:
2020

[Link to publication in University of Groningen/UMCG research database](#)

Citation for published version (APA):

Jiang, W., Duan, K., Rootes-Murdy, K., Hoekstra, P. J., Hartman, C. A., Oosterlaan, J., Heslenfeld, D., Franke, B., Buitelaar, J., Arias-Vasquez, A., Liu, J., & Turner, J. A. (2020). Structural brain alterations and their association with cognitive function and symptoms in Attention-deficit/Hyperactivity Disorder families. *NeuroImage. Clinical*, 27, [102273]. <https://doi.org/10.1016/j.nicl.2020.102273>

Copyright

Other than for strictly personal use, it is not permitted to download or to forward/distribute the text or part of it without the consent of the author(s) and/or copyright holder(s), unless the work is under an open content license (like Creative Commons).

Take-down policy

If you believe that this document breaches copyright please contact us providing details, and we will remove access to the work immediately and investigate your claim.

Downloaded from the University of Groningen/UMCG research database (Pure): <http://www.rug.nl/research/portal>. For technical reasons the number of authors shown on this cover page is limited to 10 maximum.



Structural brain alterations and their association with cognitive function and symptoms in Attention-deficit/Hyperactivity Disorder families

Wenhao Jiang^a, Kuaikuai Duan^b, Kelly Rootes-Murdy^a, Pieter J. Hoekstra^c, Catharina A. Hartman^c, Jaap Oosterlaan^d, Dirk Heslenfeld^d, Barbara Franke^{e,f}, Jan Buitelaar^g, Alejandro Arias-Vasquez^{e,f}, Jingyu Liu^h, Jessica A. Turner^{a,i,*}

^a Department of Psychology, Georgia State University, USA

^b School of Electrical and Computer Engineering, Georgia Institute of Technology, USA

^c University of Groningen, University Medical Center Groningen, Department of Psychiatry, Groningen, The Netherlands

^d Department of Clinical Neuropsychology, VU University Amsterdam, Amsterdam, The Netherlands

^e Department of Human Genetics, Donders Institute for Brain, Cognition and Behaviour, Radboud University Medical Center, Nijmegen, The Netherlands

^f Department of Psychiatry, Donders Institute for Brain, Cognition and Behaviour, Radboud University Medical Center, Nijmegen, The Netherlands

^g Department of Cognitive Neuroscience, Donders Institute for Brain, Cognition and Behaviour, Radboud University Medical Center, Nijmegen, The Netherlands

^h Department of Computer Science, TReNDS Center, Georgia State University, Atlanta, USA

ⁱ Neuroscience Institute, Georgia State University, USA

ARTICLE INFO

Keywords:

ADHD
Independent component analysis
Cerebellum
Insula
Inattention

ABSTRACT

Gray matter disruptions have been found consistently in Attention-deficit/Hyperactivity Disorder (ADHD). The organization of these alterations into brain structural networks remains largely unexplored. We investigated 508 participants (281 males) with ADHD (N = 210), their unaffected siblings (N = 108), individuals with sub-threshold ADHD (N = 49), and unrelated healthy controls (N = 141) with an age range from 7 to 18 years old from 336 families in the Dutch NeuroIMAGE project. Source based morphometry was used to examine structural brain network alterations and their association with symptoms and cognitive performance. Two networks showed significant reductions in individuals with ADHD compared to unrelated healthy controls after False Discovery Rate correction. Component A, mainly located in bilateral Crus I, showed a ADHD/typically developing difference with subthreshold cases being intermediate between ADHD and typically developing controls. The unaffected siblings were similar to controls. After correcting for IQ and medication status, component A showed a negative correlation with inattention symptoms across the entire sample. Component B included a maximum cluster in the bilateral insula, where unaffected siblings, similar to individuals with ADHD, showed significantly reduced loadings compared to controls; but no relationship with individual symptoms or cognitive measures was found for component B. This multivariate approach suggests that areas reflecting genetic liability within ADHD are partly separate from those areas modulating symptom severity.

1. Introduction

Attention-deficit/Hyperactivity Disorder (ADHD) is a heritable neurodevelopmental disorder characterized by inattention and/or hyperactivity and impulsivity (Polanczyk and Rohde, 2007). Heritability of the disorder is estimated to be around 75%, with siblings of ADHD cases having a four times higher risk of developing ADHD than the general population (Biederman et al., 1990; Wolfers et al., 2016). Family and genetic factors influence both ADHD risk and brain structures (Demontis et al., 2017; Faraone et al., 2005; Klein et al., 2017; Peper et al., 2007). Unaffected siblings of ADHD cases show altered brain

phenotypes, often at intermediate levels between ADHD and controls (Bralten et al., 2016), suggesting endophenotype qualities of such traits (Durstun et al., 2006; Gottesman and Gould, 2003; Geven et al., 2015; Hart et al., 2014; van Rooij et al., 2015). However, the exact brain mechanisms behind such familial effects and their potential association with the symptoms and cognitive deficits relevant to ADHD are still unclear.

Structural brain alterations associated with ADHD have been reported consistently across cortical and subcortical regions (Ellison-Wright et al., 2008; Halperin and Schulz, 2006; Hoogman et al., 2017). Previous studies have demonstrated significant brain developmental

* Corresponding author at: Psychology and Neuroscience, Georgia State University, Atlanta, GA, USA.

E-mail address: jturner63@gsu.edu (J.A. Turner).

<https://doi.org/10.1016/j.nicl.2020.102273>

Received 26 September 2019; Received in revised form 26 March 2020; Accepted 21 April 2020

Available online 23 April 2020

2213-1582/ © 2020 Published by Elsevier Inc. This is an open access article under the CC BY-NC-ND license

(<http://creativecommons.org/licenses/by-nc-nd/4.0/>).

delay and 3–5% smaller whole brain volume in individuals with ADHD compared to healthy controls (Castellanos et al., 1996; Castellanos et al., 2002; Greven et al., 2015). Meta-analysis studies have revealed ADHD-related brain abnormalities consistently in the caudate and basal ganglia, including the globus pallidus and putamen (Frodl and Skokauskas, 2012; Rogers and De Brito, 2016; Valera et al., 2007). Structural alterations of fronto-striatal-parietal pathways (Dickstein et al., 2006), cerebellum (Valera et al., 2007), anterior cingulate cortex (Narr et al., 2009; Norman et al., 2016), and several other brain regions have also been reported in relation to ADHD. Voxel-based morphometry (VBM) analyses of unaffected siblings of ADHD cases have identified alterations in the prefrontal cortex, medial and orbitofrontal cortex, fronto-occipital regions, and cingulate regions compared to healthy controls (Bralten et al., 2016; Durston et al., 2004; Pironti et al., 2014).

The brain regions listed above are involved in different disorders and cognitive deficits (Norman et al., 2016). It is well-known that brain regions do not act in isolation to support brain functions and different approaches have been used to define brain networks as possible “units” underlying function (Jadidian et al., 2015). A recent 2018 study employed source-based morphometry (SBM) (Xu et al., 2009), a data-driven decomposition approach, to extract brain network as potential markers in adult ADHD (Duan et al., 2018). Inspired by Duan and colleagues, we investigated multivariate structural brain network alterations in children with ADHD, compared to their unrelated controls, and subsequently we examined those case v. controls alterations in their unaffected siblings and participants with subthreshold ADHD. We also examined the associations between the observed altered structural brain networks and major symptom domains and cognitive functions (namely, working memory and inhibition) while controlling for family structure. Thus, with family structure taken into account, we aimed to distinguish multivariate brain networks markers potentially associated with ADHD.

2. Material and methods

2.1. Participants

This study included 508 participants from 336 families from the NeuroIMAGE project (von Rhein et al., 2015). In this longitudinal study, families with an individual with ADHD were recruited, along with healthy control families. All participants provided written consent; detailed recruitment procedures, ethical approval, inclusion and exclusion criteria, as well as assessment information can be found in the previous description paper (von Rhein et al., 2015). Participants with ADHD were diagnosed according to the Diagnostic and Statistical Manual of Mental Disorders, 4th Edition (DSM-IV) (American Psychiatric Association, 1994). All participants had an IQ greater or equal than 70 as assessed by the Wechsler Adult Intelligence Scale (WAIS), and the absence of autism, epilepsy, learning difficulties, brain disorders, and genetic disorders mimicking symptoms of ADHD were confirmed (von Rhein et al., 2015).

Inattention and hyperactivity/impulsivity were assessed based on the Dutch translation of the Schedule for Affective Disorders Schizophrenia—present and lifetime version (K-SADS) and Conners’ Teacher Rating Scale – 1997 Revised Version: Long Form, DSM-IV Symptoms Scale (CTRSR:L). The symptom scores from K-SADS and CTRSRL were combined together, and the range of symptom scores was between 0 and 9 for each domain with a higher score indicating more severe symptoms. Participants were grouped into one of four categories: Those with ADHD, unaffected siblings, individuals with subthreshold ADHD, and non-ADHD controls (excluding siblings of ADHD cases), to follow groupings used in previous studies (von Rhein et al., 2015). Unaffected siblings included in this study did not meet diagnostic criteria for ADHD.

Subthreshold individuals had scores between 2 and 5 in either

domain while non-ADHD controls had scores ≤ 2 in either domain (von Rhein et al., 2015).

2.2. Neurocognitive assessments

Cognitive assessments available in the NeuroIMAGE sample included in the current study were evaluations of working memory and inhibition, two of the common cognitive deficits seen in ADHD (Alderson et al., 2013; Tarver et al., 2014). In the WAIS Digit Span test, maximum forward and backward scores were included (Wechsler et al., 2000). The average accuracy scores from Visuo-spatial Working Memory test were also included (Nutley et al., 2010). In a stop task, the stop signal reaction time, the deviation of reaction time from the mean, and total numbers of commission and omission error were evaluated to measure inhibition (Logan et al., 1984).

2.3. Image acquisition and processing

T1-weighted images were acquired from two sites with comparable 1.5 T scanners (Sonata and Avanto; Siemens) with the following settings: a voxel size of $1 \times 1 \times 1 \text{ mm}^3$, TI = 1000 ms, TR = 2730 ms, TE = 2.95 ms, field of view = 256 mm, and 176 sagittal slices. Two independent raters applied a 4-point quality assurance scale to all the scans (1 = good; 2 = useable; 3 = poor; 4 = very poor), and only those images rated as “good” were included in the following analyses (von Rhein et al., 2015).

All images were segmented using Statistical Parametric Mapping 12 (SPM12, <http://www.fil.ion.ucl.ac.uk/spm/software/spm12/>), with age-specific templates generated by Template-O-Matic toolbox using the matched pairs approach (Wilke et al., 2008). Gray matter (GM) volumetric data were normalized to the Montreal Neurological Institute (MNI) template, modulated, and smoothed with a $6 \times 6 \times 6 \text{ mm}^3$ Gaussian kernel. We performed a correlation analysis between the images and the original MNI template and all images showed greater than 0.8 correlation (mean $r = 0.98$). In addition, we applied a gray matter mask to the images which excluded voxels that had less the 20% gray matter. To remove possible confounding effects of gender and site, we performed a voxel-wise linear regression model with all images. Only residuals after the voxel-wise linear regression were reconstructed into brain images and entered into the decomposition analysis.

2.4. Image decomposition and analysis

We utilized the SBM module of the GIFT Toolbox to perform independent component analysis (ICA) and component estimation using the minimum description length algorithm (Rissanen, 1978). From the infomax ICA algorithm with ICASSO within the GIFT toolbox, twenty distinct components were produced (Bell and Sejnowski, 1995; Xu et al., 2009). ICASSO (Himberg et al., 2004) with 10 ICA runs ensured the stability of components. The loading coefficients for each component and participant from these ICA results were the dependent variables in the following analyses, which reflect individual gray matter volume of each component. We included medication use as a binary variable (only in ADHD participants) and tested the quadratic effect of age (age^2) for all the 20 components. Further analyses included only the components showing significant medication or age^2 effects. Comorbid diagnoses of depression or anxiety were not included because only one participant was identified as having anxiety and eight participants were identified as having depression.

We applied a linear mixed model using family as a random effect with other variables as fixed effects (grouping, age, age^2 , and medication when applicable), to detect components that differed between persons with ADHD and healthy controls. We applied the linear model using MATLAB function of fitlmematrix (MATLAB and Statistics Toolbox Release 2013a, The MathWorks, Inc., Natick, Massachusetts, United States.). We only included GM components showing significant

Table 1
Demographics of the sample.

	ADHD (210)	Unaffected siblings (108)	Subthreshold Subjects (49)	Controls (141)
Age (years)	14.61 ± 2.41	14.59 ± 2.16	15.13 ± 1.97	14.58 ± 2.14
Gender (F/M)	81/129	68/40	16/33	62/79
Estimated IQ	98.63 ± 16.49 (0.5%)	99.33 ± 14.15 (0%)	98.79 ± 12.42 (0%)	105.13 ± 13.91 (1.4%)
Inattention	7.33 ± 1.71 (0%)	0.44 ± 1.11 (0%)	4.34 ± 0.95 (0%)	0.33 ± 1.11 (0%)
Hyperactivity/Impulsiveness	5.99 ± 1.71 (0%)	0.34 ± 0.79 (0%)	2.73 ± 1.96 (0%)	0.17 ± 0.63 (0%)
Maximum digit span forward	7.94 ± 1.79 (0.5%)	8.62 ± 1.70 (0%)	8.80 ± 1.79 (0%)	8.70 ± 1.68 (1.4%)
Maximum digit span backward	5.10 ± 1.74 (0.5%)	6.06 ± 1.67 (0%)	6.06 ± 2.10 (0%)	6.05 ± 1.94 (1.4%)
Stop task errors	9.45 ± 12.1 (40%)	5.64 ± 8.02 (36%)	5.47 ± 4.33 (39%)	4.47 ± 6.76 (31%)
Stop task SSRT	277.79 ± 76.01 (40.5%)	256.05 ± 8.02 (36%)	282.42 ± 58.29 (39%)	263.14 ± 6.76 (31%)
Stop task ICV	0.22 ± 0.05 (40%)	0.19 ± 0.04 (36%)	0.20 ± 0.05 (39%)	0.18 ± 0.04 (31%)
SWM average accuracy	0.67 ± 0.15 (42%)	0.68 ± 0.15 (44%)	0.74 ± 0.11 (31%)	0.74 ± 0.041 (23%)
Scan site 1	123	52	22	46
Scan site 2	87	56	27	95

Note: Values displayed in the table are showed as mean ± standard deviation. Site 1 scanner was AVANTO, and site 2 was SONATA. The percentages in parentheses show the missingness of data in each diagnostic group. Stop task error included N commission and omission errors together. Stop task SSRT: stop task stop signal reaction time. Stop task ICV: interindividual coefficient of variation which is the reaction time variance/mean reaction time. SWM average accuracy: the average accuracy of visuo-spatial working memory task.

ADHD/typically developing differences after a false discovery rate (FDR) correction of $q < 0.05$ in further association analyses for all participants. In addition, we calculated a moving average of loading coefficients from the significant components. The moving averages were based on the three-years-age bins, moving one year up every step. Those age bins with less than six participants were not included.

Finally, we conducted association analyses between component loadings and cognitive performance along with symptom scores with family random effects. Considering the potential confound of IQ, the final fixed effects in this model included IQ alongside with component loadings, age, gender, and medication.

3. Results

In decomposing the gray matter data of 508 children and adolescents including 210 ADHD patients, 108 unaffected siblings, 49 individuals with subthreshold ADHD, and 141 unrelated healthy controls (detailed demographic information is presented in Table 1), 20 brain components were generated and their ICASSO stability indices were all large (> 0.97). See supplemental Fig. 1 for representations of all components.

Two components showed significant ADHD/typically developing difference passing FDR correction (the significant threshold set at $2.50e-03$ calculated by $0.05/20$, the total number of components), consistently showing lower loading coefficients in cases than controls. Component A (Cohen's $d = -0.32$, $p = 1.38e-05$) was mainly located in the bilateral Crus I while controlling for age ($\beta = -0.15$, $p = 7.85e-13$) and medication ($\beta = 0.41$, $p = 7.00e-04$) in the model. Component B (Cohen's $d = -0.31$, $p = 1.13e-03$) was found largely in the bilateral insula while controlling for age ($\beta = 0.40$, $p = 0.046$), age² ($\beta = -0.020$, $p = 5.10e-03$), and medication ($\beta = 0.24$, $p = 0.041$) in the model. See Fig. 1 and Table 2 for detailed representations of these two components. The moving average of loading coefficients of component A and B are showed in Fig. 2.

Component A showed significant differences only in the comparison between individuals with ADHD and typically developing controls; subthreshold cases and unaffected siblings were not significantly different from typically developing controls (see Fig. 3a). In component B,

individuals with ADHD and unaffected siblings (Cohen's $d = -0.35$, $p = 2.02e-03$) both showed significantly reduced loadings relative to typically developing controls, while subthreshold cases were not significantly different from any other group (see Fig. 3b).

In terms of symptom and cognitive measures, component A showed a negative correlation with inattention symptoms across the entire group ($\beta = -0.43$, $p = 1.33e-03$, variance explained = 1.4%; see Fig. 4) after correcting for IQ and medication. However, most other association analyses were not significant between spatial patterns and symptom or cognitive tests (the significant threshold of $6.25e-03$ calculated by $0.05/8$, the number of the tests). See supplemental Table 1 for all association analysis results.

4. Discussion

In this study, we used an SBM analysis to identify gray matter network differences in individuals with ADHD, unaffected siblings, subthreshold ADHD participants, and unrelated healthy controls. Using a hypothesis free approach (no pre-selection of regions of interest), we identified two components, in the cerebellum and insula, that showed significant gray matter reductions in participants with ADHD compared to controls. We also found this reduction continued through the whole adolescence, similar to previous findings using the same age range in a larger cohort that included the current study's participants (Hoogman et al., 2017). In addition, unaffected siblings exhibited gray matter loadings similar to controls in the cerebellar component (component A), but showed a negative relationship to inattention levels independent of clinical status. The insula component (component B), in contrast, showed a reduction in unaffected siblings similar to that in cases, but no significant relationship was observed with symptom severity or cognitive performance. In addition, there were no components significantly related to any of the cognitive measures. Overall, this approach suggests that brain areas reflecting genetic liability within ADHD may be partly separate from areas modulating symptom severity, as has been suggested previously (van Ewijk et al., 2014; Wu et al., 2017).

In component A, the bilateral Crus I (extending to cerebellum posterior lobe and left lingual gyrus) contributed most strongly, and the left Crus II and left fusiform also contributed, though less strongly, to this

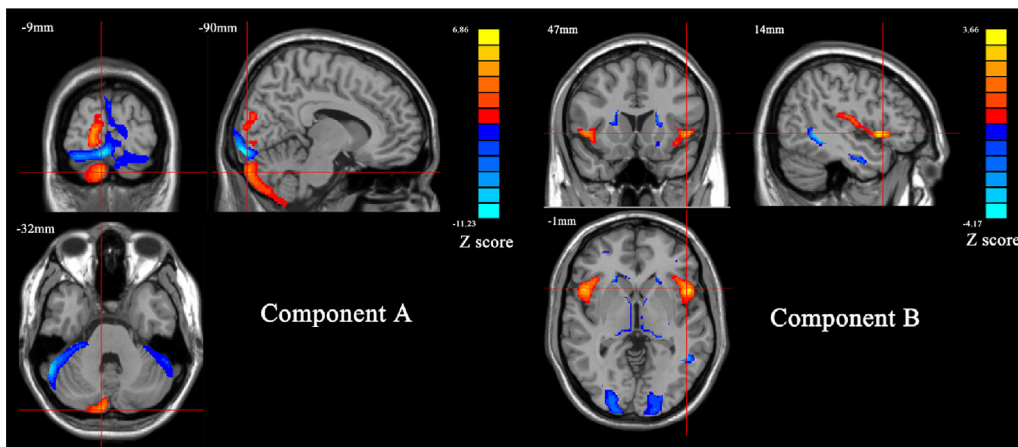


Fig. 1. The two components showed significant case/control difference. Component A mainly included the bilateral Crus I, left lingual gyrus, left Crus II, and the left fusiform (Z score > 2 , cluster volume > 1.5 cc³). Component B mainly included the bilateral insula, caudate, thalamus and the middle occipital gyrus (Z score > 2 , cluster volume > 1.5 cc³). The color-bar stated the Z -score in brain components, and it indicated to what extents the voxels contributed to the whole brain component (red for positive and blue for negative). (For interpretation of the references to color in this figure legend, the reader is referred to the web version of this article.)

component. The composition of this component is consistent with the diverse functions of the cerebellum. Of particular relevance to ADHD, functions of the cerebellum include motor control, working memory, and attention (Duan et al., 2018; Ivanov et al., 2014; Moore et al., 2017). Multiple studies now suggest that the cerebellum, and alterations in its structure and function, play an important role in ADHD throughout childhood, adolescence, and adulthood (Duan et al., 2018; Noordermeer et al., 2016; Valera et al., 2007). Our analyses support the current literature, with a focus on Crus I and Crus II, which are considered part of an executive control network (Stoodley, 2012). Executive function deficits are known to be a key problem in ADHD (Mahone and Denckla, 2017; Mueller et al., 2017) and have been related to inattention symptoms (Chhabildas et al., 2001; Neely et al., 2016; Nigg et al., 2005; Willcutt et al., 2005).

The role of the cerebellum is backed by previous analyses in an overlapping data set of the NeuroIMAGE project. A linked ICA analysis of both children and adult brain images, taking into account fractional anisotropy, mean diffusivity, diffusion mode, VBM, cortical thickness estimate and area expansion estimate, reported reduced Crus I, Crus II, cerebellar tonsil and culmen volume in its VBM component in ADHD compared to non-ADHD participants (Francx et al., 2016). Multivariate analysis in adults with ADHD also showed a brain component involving cerebellar tonsil and culmen, and their volume negatively correlated with inattention scores (the less volume, the worse the inattention symptoms), while a voxel-wise analysis showed cerebellum gray matter volume positively correlated with working memory in the same study (Duan et al., 2018). Our findings in component A overlap with these previous findings of the cerebellum showing reductions in ADHD compared to non-ADHD, though the cognitive relationship in our analysis was inattention symptoms rather than working memory performance.

Component B also showed gray matter reduction compared to the

controls, and it mainly included the insula, extending to inferior frontal gyrus, and included bilateral caudate, bilateral thalamus, right inferior temporal gyrus and bilateral middle occipital gyrus. Functional neuroimaging studies have emphasized the key role of the insula during salience processing and inhibitory control, with ADHD patients showing abnormal activation/deactivation (Cubillo et al., 2012; Rubia et al., 2011) or hyperactivation in the insula during distracting stimuli (Vetter et al., 2018). In contrast, the reduction of gray matter volume of the insula has been previously reported in ADHD (Lopez-Larson et al., 2012) as well as in common ADHD comorbidities of inhibitory control, including obsessive-compulsive disorder (Norman et al., 2016) and oppositional defiant disorder (Noordermeer et al., 2017). In this context of similar disorders, the insula has often been implicated in larger inhibitory control networks including ventrolateral prefrontal cortex, supplementary motor area, dorsal anterior cingulate cortex, and the striatum, thalamus, and parietal regions (Aron, 2011; Hugdahl et al., 2015). However, in this structural analysis, we did not find a relationship with inattention or other cognitive or symptom measures for this network.

Involvement of subcortical structures in component B is consistent with findings from large-scale studies of ADHD. The largest subcortical study to date, from the ENIGMA ADHD group, showed that most subcortical regions, including nucleus accumbens, amygdala, caudate nucleus, hippocampus, and putamen were smaller in ADHD cases than controls (Hoogman et al., 2017). However, none of the previous univariate meta-analysis of VBM results have reported the significance of the bilateral insula, despite its important role in inhibitory control. Our SBM findings for component B provide a more insightful profile of how different brain regions may stably work together to form a recognizable network than if we had investigated their volume alterations individually. Finally, component B might be capturing part of the genetic loading involved in brain development shared by ADHD patients and

Table 2
Brain regions, peak coordinates and volumes of components A and B.

	Brain regions	Volumes (cc ³)	Peak coordinates (Z and coordinates)
<i>Component A</i>			
Cluster 1	Crus I (extended to cerebellum posterior lobe and L lingual gyrus)	2.1	11.2 (−9, −95, −14)
Cluster 2	L Crus II	0.9	−4.7 (−9, −90, −32)
Cluster 3	L fusiform gyrus	0.3	−6.8 (−29, −75, −3)
<i>Component B</i>			
Cluster 1/2	L/R insula (extended to inferior frontal gyrus)	0.7/0.7	3.3 (−50, 12, −3)/3.7 (48, 12, 3)
Cluster 3/4	L/R middle occipital gyrus	0.8/1.0	−4.2 (−33, −74, 15)/−4.2 (30, −66, 25)
Cluster 5	L/R caudate	0.3/0.4	−2.9 (−21, 23, 7)/−2.7 (19, 22, 7)
	L/R thalamus	0.3/0.3	−3.1 (−16, 25, 3)/−2.8 (9, −19, 3)
	R inferior temporal gyrus	0.5	−4.2 (51, −50, −6)

Note: For both components, Z score was set > 2 , and cluster volumes were set > 1.5 cc³ to retain their most significant results. The directions of peak Z scores indicate whether the brain region contributed positively or negatively to the component as red for positive and blue for negative in brain maps.

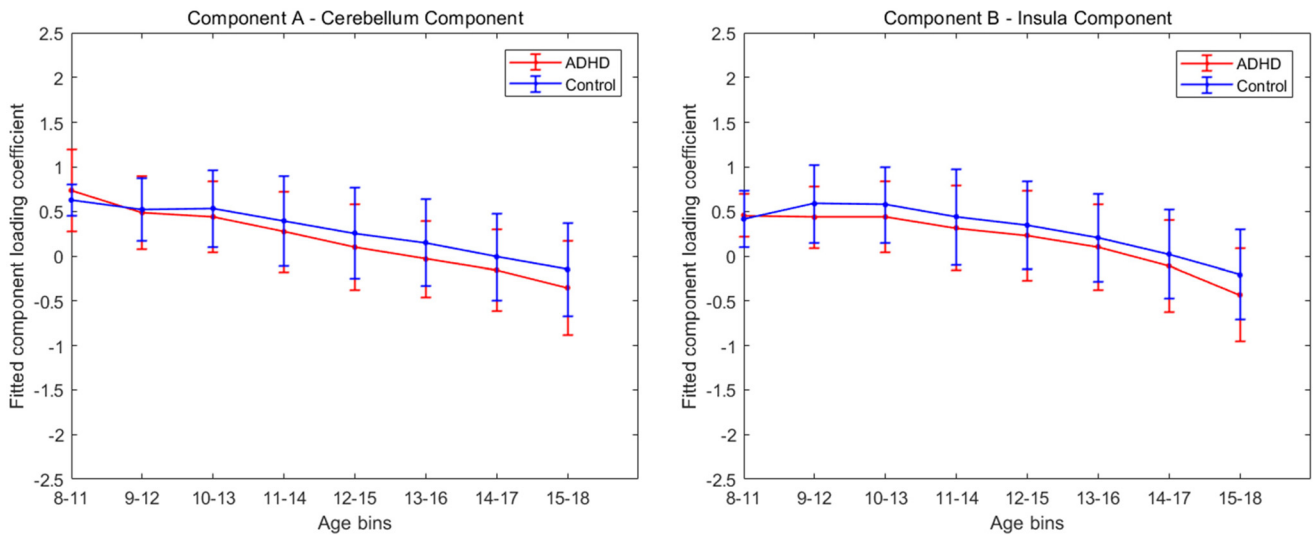


Fig. 2. Moving averages of component A loading coefficients; corrected for age, medication and family structures are showed on the left. Those of component B loadings coefficients; corrected for age, age², medication, and family structures are showed on the right. Age bins with less than five subjects in either group are removed from the figures.

their unaffected siblings, independent of symptom severity and cognitive performance. Although these two components were found through ICA; connectivity between the cerebellum and the insula has been documented in both resting state and functional studies, showing support for potential biological connections between our findings (Balsters et al., 2014; Buckner et al., 2011).

Strengths of this study include multivariate analyses on participants from both ADHD and control families with family structures taken into account in the linear mixed model. In addition, the relationship of brain components among categories (ADHD, unaffected siblings, subthreshold participants, and controls) and symptom dimensions were also examined. The previous multivariate analysis in the NeuroIMAGE project using linked ICA was concordant with our work by showing reduced cortical thickness in the insula, occipital lobes, and anterior cingulate compared to the non-ADHD participants (Francx et al., 2016). The VBM analysis from the NeuroIMAGE project had shown, in addition to the previously reported prefrontal, inferior frontal, and occipital regions (Durston et al., 2004), that ADHD patients had cortical deficits in the precentral gyrus, medial and orbitofrontal cortex, and cingulate

gyrus; while their unaffected siblings showed the same differences excluding the precentral gyrus (Bralten et al., 2016). However, multivariate analyses identify complementary brain deficits to these cortical alterations. The cerebellum, insula and other regions also played a role, and these alterations have been previously shown to group together (Duan et al., 2018; Francx et al., 2016).

These results help distinguish symptom dimensions from genetic liability. The cerebellum component extracted by SBM was more closely connected to inattention symptoms across the four groups, and it was not strongly affected by the common genetic factors shared in family structures. The insula component captured the alterations shared by ADHD and their siblings, but no component was related to the symptom dimensions. This contrast might suggest different mechanisms were contributing to the complicated ADHD clinical profile, which was also discovered in previous studies (van Ewijk et al., 2014; Wu et al., 2017).

A limitation was that age, gender, and scanning site were not well-balanced in each group as a result of original data collection limitations. These covariates were added to the general linear models to counteract these imbalances. In addition, we did a voxel-wise correction for gender

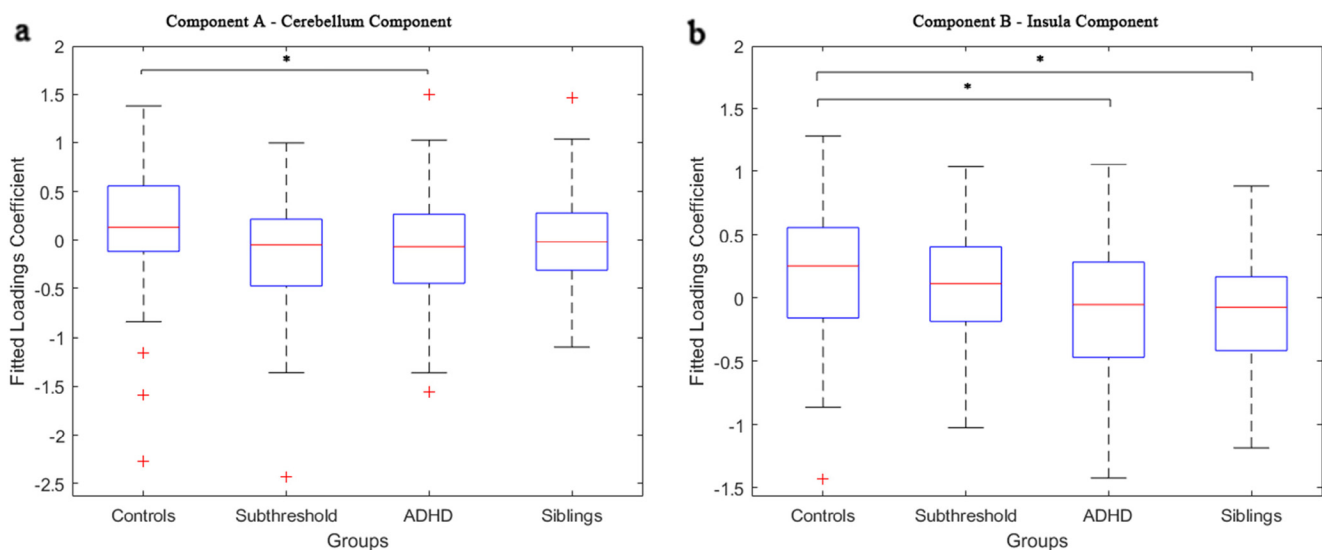


Fig. 3. Asterisks indicate significant group differences passing FDR correction threshold of 2.50×10^{-3} ($0.05/20$ decided by the total number of the brain components). The whiskers extend to the most extreme data points, and the outliers are plotted individually using the '+' symbol.

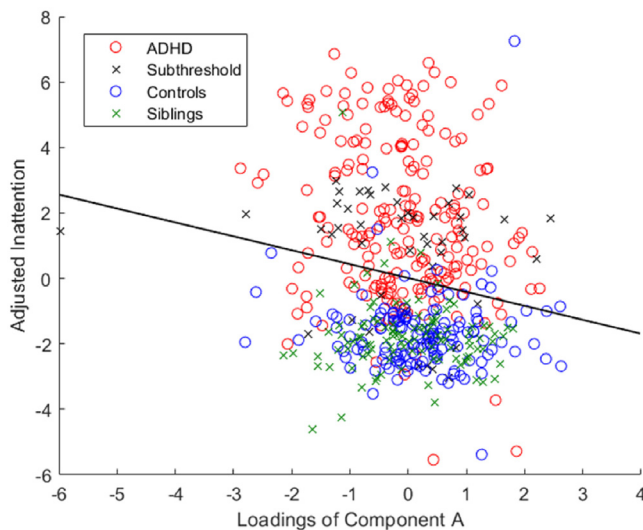


Fig. 4. Component A showed a negative correlation with inattention symptoms across the entire group ($p = 1.33e-03$, $\beta = -0.43$, variance explained = 1.4%) after correcting for IQ and medication. In the figure, loadings of component A vs. adjusted inattention (corrected for age, gender, IQ, medication, and random effect) from the linear mixed model were plotted.

and site, and examined whether age or age² showed a significant influence on the brain images for each component (in their respective models). In addition, another limitation of this study was that the sample had a broad age span (7–18 years), which may have brought in potential brain development bias. To counteract this limitation, we used children brain templates for segmentation to avoid bias that could be induced by priori adult segmentation templates as suggested by previous pediatric neuroimaging studies (Murgasova et al., 2007; Sanchez et al., 2012; Wilke et al., 2003). From there, we normalized the brain images into the common MNI space as a more comparable and conservative choice (Wilke et al., 2017). However, there had been arguments regarding the normalization of children brains into adult space (Wilke et al., 2002). It has been suggested that the adult space could be suitable for children samples with a six year age range (Mazziotta et al., 2001); but bias could be involved with a larger age range (Muzik et al., 2000; Yoon et al., 2009) because of a potential loss of age related brain structure variance. However, our main results were not affected when the determinants of scaling matrix was added to the models.

5. Conclusion

In conclusion, our data suggest that the cerebellum and insula components might shed light on different but related mechanisms of ADHD, indicating that the clinical phenotype, cognitive performance, and mechanisms shared in family structure can be supported by different brain networks. Gray matter abnormalities were found to either underlie inattention symptoms or be affected by shared relationships between ADHD patients and their unaffected siblings. This suggests that brain areas reflecting genetic liability within ADHD may be partly separate from areas modulating symptom severity.

Author contributions

J. Turner, J. Liu and W. Jiang designed the study. A. Arias-Vasquez acquired the data and consulted on the interpretation. W. Jiang and K. Duan analyzed the data. W. Jiang and K. Rootes-Murdy wrote the article, which all authors reviewed. All authors approved the final version to be published and can certify that no other individuals not listed as authors have made substantial contributions to the paper.

Declaration of Competing Interest

Barbara Franke has received educational speaking fees from Shire and Medice. Other authors report no conflict of interest. All authors critically reviewed the content and approved the final version for publication. No other individuals not listed as authors have made substantial contributions to the paper.

Acknowledgments

This study was supported by the National Institutes of Health and The National Institute of Mental Health through the grant 1R01MH106655. This NeuroIMAGE study was supported by NIH Grant R01MH62873, NWO Large Investment Grant 1750102007010 and grants from Radboud University Medical Center, University Medical Center Groningen and Accare, and VU University Amsterdam. This work was also supported by grants from NWO Brain & Cognition (433-09-242 and 056-13-015) and from ZonMW (60-60600-97-193). Further support was received from the European Union's FP7 program under grant agreement no. 278948 (TACTICS), no. 602450 (IMAGEMEND), no. 602805 (Aggressotype), and from the European Union's Horizon 2020 research and innovation program under grant agreement no. 667302 (CoCA) and no. 728018 (Eat2beNICE). Barbara Franke receives funding from a personal Vici grant (to Barbara Franke) of the Netherlands Organization for Scientific Research (NWO, grant numbers 433-09-229 and 016-130-669) and a pilot grant of the Dutch National Research Agenda for the NeuroLabNL project.

Appendix A. Supplementary data

Supplementary data to this article can be found online at <https://doi.org/10.1016/j.nicl.2020.102273>.

References

- Alderson, R.M., Kasper, L.J., Hudec, K.L., Patros, C.H., 2013. Attention-deficit/hyperactivity disorder (ADHD) and working memory in adults: a meta-analytic review. *Neuropsychology* 27, 287–302.
- American Psychiatric Association, 1994. *Diagnostic and Statistical Manual of Mental Disorders, 4th ed.*, Washington, DC.
- Aron, A.R., 2011. From reactive to proactive and selective control: developing a richer model for stopping inappropriate responses. *Biol. Psychiatry* 69, e55–e68.
- Balsters, J.H., Laird, A.R., Fox, P.T., Eickhoff, S.B., 2014. Bridging the gap between functional and anatomical features of cortico-cerebellar circuits using meta-analytic connectivity modeling. *Hum. Brain Mapp.* 35, 3152–3169.
- Bell, A.J., Sejnowski, T.J., 1995. An information-maximization approach to blind separation and blind deconvolution. *Neural Comput.* 7, 1129–1159.
- Biederman, J., Faraone, S.V., Keenan, K., Knee, D., Tsuang, M.T., 1990. Family-genetic and psychosocial risk factors in DSM-III attention deficit disorder. *J. Am. Acad. Child Adolesc. Psychiatry* 29, 526–533.
- Bralten, J., Greven, C.U., Franke, B., Mennes, M., Zwiers, M.P., Rommelse, N.N., Hartman, C., van der Meer, D., O'Dwyer, L., Oosterlaan, J., Hoekstra, P.J., Heslenfeld, D., Arias-Vasquez, A., Buitelaar, J.K., 2016. Voxel-based morphometry analysis reveals frontal brain differences in participants with ADHD and their unaffected siblings. *J. Psychiatry Neurosci.* 41, 272–279.
- Buckner, R.L., Krienen, F.M., Castellanos, A., Diaz, J.C., Yeo, B.T.T., 2011. The organization of the human cerebellum estimated by intrinsic functional connectivity. *J. Neurophysiol.* 106, 2322–2345.
- Castellanos, F.X., Giedd, J.N., Marsh, W.L., Hamburger, S.D., Vaituzis, A.C., Dickstein, D.P., Sarfatti, S.E., Vauss, Y.C., Snell, J.W., Lange, N., Kaysen, D., Krain, A.L., Ritchie, G.F., Rajapakse, J.C., Rapoport, J.L., 1996. Quantitative brain magnetic resonance imaging in attention-deficit hyperactivity disorder. *Arch. Gen. Psychiatry* 53, 607–616.
- Castellanos, F.X., Lee, P.P., Sharp, W., Jeffries, N.O., Greenstein, D.K., Clasen, L.S., Blumenthal, J.D., James, R.S., Ebens, C.L., Walter, J.M., Zijdenbos, A., Evans, A.C., Giedd, J.N., Rapoport, J.L., 2002. Developmental trajectories of brain volume abnormalities in children and adolescents with attention-deficit/hyperactivity disorder. *JAMA* 288, 1740–1748.
- Chhabildas, N., Pennington, B.F., Willcutt, E.G., 2001. A comparison of the neuropsychological profiles of the DSM-IV subtypes of ADHD. *J. Abnorm. Child Psychol.* 29, 529–540.
- Cubillo, A., Halari, R., Smith, A., Taylor, E., Rubia, K., 2012. A review of fronto-striatal and fronto-cortical brain abnormalities in children and adults with Attention Deficit Hyperactivity Disorder (ADHD) and new evidence for dysfunction in adults with ADHD during motivation and attention. *Cortex* 48, 194–215.

- Demontis, D., Walters, R.K., Martin, J., Mattheisen, M., Als, T.D., Agerbo, E., Belliveau, R., Bybjerg-Grauholm, J., Bækved-Hansen, M., Cerrato, F., Chambert, K., Churchhouse, C., Dumont, A., Eriksson, N., Gandal, M., Goldstein, J., Grove, J., Hansen, C.S., Hauberg, M., Hollegaard, M., Howrigan, D.P., Huang, H., Maller, J., Martin, A.R., Moran, J., Pallesen, J., Palmer, D.S., Pedersen, C.B., Pedersen, M.G., Poterba, T., Poulsen, J.B., Ripke, S., Robinson, E.B., Satterstrom, F.K., Stevens, C., Turley, P., Won, H., Andreassen, O.A., Burton, C., Boomsma, D., Cormand, B., Dalsgaard, S., Franke, B., Gelemler, J., Geschwind, D., Hakonarson, H., Haavik, J., Kranzler, H., Kuntsi, J., Langley, K., Lesch, K.-P., Middeldorp, C., Reif, A., Rohde, L.A., Rousos, P., Schachar, R., Sklar, P., Sonuga-Barke, E., Sullivan, P.F., Thapar, A., Tung, J., Waldman, I., Nordentoft, M., Hougaard, D.M., Werge, T., Mors, O., Mortensen, P.B., Daly, M.J., Faraone, S.V., Børglum, A.D., Neale, B.M., 2017. Discovery of the first genome-wide significant risk loci for ADHD. *bioRxiv*.
- Dickstein, S.G., Bannon, K., Castellanos, F.X., Milham, M.P., 2006. The neural correlates of attention deficit hyperactivity disorder: an ALE meta-analysis. *J. Child Psychol. Psychiatry* 47, 1051–1062.
- Duan, K., Chen, J., Calhoun, V.D., Lin, D., Jiang, W., Franke, B., Buitelaar, J.K., Hoogman, M., Arias-Vasquez, A., Turner, J.A., Liu, J., 2018. Neural correlates of cognitive function and symptoms in attention-deficit/hyperactivity disorder in adults. *Neuroimage Clin.* 19, 374–383.
- Durston, S., Hulshoff Pol, H.E., Schnack, H.G., Buitelaar, J.K., Steenhuis, M.P., Minderaa, R.B., Kahn, R.S., van Engeland, H., 2004. Magnetic resonance imaging of boys with attention-deficit/hyperactivity disorder and their unaffected siblings. *J. Am. Acad. Child Adolesc. Psychiatry* 43, 332–340.
- Durston, S., Mulder, M., Casey, B.J., Ziermans, T., van Engeland, H., 2006. Activation in ventral prefrontal cortex is sensitive to genetic vulnerability for attention-deficit hyperactivity disorder. *Biol. Psychiatry* 60, 1062–1070.
- Ellison-Wright, I., Ellison-Wright, Z., Bullmore, E., 2008. Structural brain change in attention deficit hyperactivity disorder identified by meta-analysis. *BMC Psychiatry* 8, 51.
- Faraone, S.V., Perlis, R.H., Doyle, A.E., Smoller, J.W., Goralnick, J.J., Holmgren, M.A., Sklar, P., 2005. Molecular genetics of attention-deficit/hyperactivity disorder. *Biol. Psychiatry* 57, 1313–1323.
- Franx, W., Llera, A., Mennes, M., Zwiers, M.P., Faraone, S.V., Oosterlaan, J., Heslenfeld, D., Hoekstra, P.J., Hartman, C.A., Franke, B., Buitelaar, J.K., Beckmann, C.F., 2016. Integrated analysis of gray and white matter alterations in attention-deficit/hyperactivity disorder. *Neuroimage Clin.* 11, 357–367.
- Frodl, T., Skokauskas, N., 2012. Meta-analysis of structural MRI studies in children and adults with attention deficit hyperactivity disorder indicates treatment effects. *Acta Psychiatr. Scand.* 125, 114–126.
- Gottesman, I.I., Gould, T.D., 2003. The endophenotype concept in psychiatry: etymology and structural intentions. *Am. J. Psychiatry* 160, 636–645.
- Greven, C.U., Bralten, J., Mennes, M., O'Dwyer, L., van Hulzen, K.J., Rommelse, N., Schwen, L.J., Hoekstra, P.J., Hartman, C.A., Heslenfeld, D., Oosterlaan, J., Faraone, S.V., Franke, B., Zwiers, M.P., Arias-Vasquez, A., Buitelaar, J.K., 2015. Developmentally stable whole-brain volume reductions and developmentally sensitive caudate and putamen volume alterations in those with attention-deficit/hyperactivity disorder and their unaffected siblings. *JAMA Psychiatry* 72, 490–499.
- Halperin, J.M., Schulz, K.P., 2006. Revisiting the role of the prefrontal cortex in the pathophysiology of attention-deficit/hyperactivity disorder. *Psychol. Bull.* 132, 560–581.
- Hart, H., Chantiluke, K., Cubillo, A.I., Smith, A.B., Simmons, A., Brammer, M.J., Marquand, A.F., Rubia, K., 2014. Pattern classification of response inhibition in ADHD: toward the development of neurobiological markers for ADHD. *Hum. Brain Mapp.* 35, 3083–3094.
- Himberg, J., Hyvarinen, A., Esposito, F., 2004. Validating the independent components of neuroimaging time series via clustering and visualization. *Neuroimage* 22, 1214–1222.
- Hoogman, M., Bralten, J., Hibar, D.P., Mennes, M., Zwiers, M.P., Schwen, L.S.J., van Hulzen, K.J.E., Medland, S.E., Shumskaya, E., Jahanshad, N., Zeeuw, P., Szekely, E., Sudre, G., Wolfers, T., Onnink, A.M.H., Dammers, J.T., Mostert, J.C., Vives-Gilbert, Y., Kohls, G., Oberwilling, E., Seitz, J., Schulte-Ruther, M., Ambrosino, S., Doyle, A.E., Hovik, M.F., Dramsdahl, M., Tamm, L., van Erp, T.G.M., Dale, A., Schork, A., Conzelmann, A., Zierhut, K., Baur, R., McCarthy, H., Yoncheva, Y.N., Cubillo, A., Chantiluke, K., Mehta, M.A., Paloyelis, Y., Hohmann, S., Baumeister, S., Bramati, I., Mattos, P., Tovar-Moll, F., Douglas, P., Banaschewski, T., Brandeis, D., Kuntsi, J., Asherson, P., Rubia, K., Kelly, C., Martino, A.D., Milham, M.P., Castellanos, F.X., Frodl, T., Zentis, M., Lesch, K.P., Reif, A., Pauli, P., Jernigan, T.L., Haavik, J., Plessen, K.J., Lundervold, A.J., Hugdahl, K., Seidman, L.J., Biederman, J., Rommelse, N., Heslenfeld, D.J., Hartman, C.A., Hoekstra, P.J., Oosterlaan, J., Polier, G.V., Konrad, K., Villarrojo, A., Ramos-Quiroga, J.A., Soliva, J.C., Durston, S., Buitelaar, J.K., Faraone, S.V., Shaw, P., Thompson, P.M., Franke, B., 2017. Subcortical brain volume differences in participants with attention deficit hyperactivity disorder in children and adults: a cross-sectional mega-analysis. *Lancet Psychiatry* 4, 310–319.
- Hugdahl, K., Raichle, M.E., Mitra, A., Specht, K., 2015. On the existence of a generalized non-specific task-dependent network. *Front. Hum. Neurosci.* 9, 430.
- Ivanov, I., Murrough, J.W., Bansal, R., Hao, X., Peterson, B.S., 2014. Cerebellar morphology and the effects of stimulant medications in youths with attention deficit-hyperactivity disorder. *Neuropsychopharmacology* 39, 718–726.
- Jadidian, A., Hurley, R.A., Taber, K.H., 2015. Neurobiology of adult ADHD: emerging evidence for network dysfunctions. *J. Neuropsychiatry Clin. Neurosci.* 27, 173–178.
- Klein, M., Walters, R.K., Demontis, D., Stein, J.L., Hibar, D.P., Adams, H.H., Bralten, J., Roth Mota, N., Schachar, R., Sonuga-Barke, E., Mattheisen, M., Neale, B.M., Thompson, P.M., Medland, S.E., Børglum, A.D., Faraone, S.V., Arias-Vasquez, A., Franke, B., 2017. Genetic markers of ADHD-related variations in intracranial volume. *bioRxiv*.
- Logan, G.D., Cowan, W.B., Davis, K.A., 1984. On the ability to inhibit simple and choice reaction time responses: a model and a method. *J. Exp. Psychol. Hum. Percept Perform* 10, 276–291.
- Lopez-Larson, M.P., King, J.B., Terry, J., McGlade, E.C., Yurgelun-Todd, D., 2012. Reduced insular volume in attention deficit hyperactivity disorder. *Psychiatry Res.* 204, 32–39.
- Mahone, E.M., Denckla, M.B., 2017. Attention-deficit/hyperactivity disorder: a historical neuropsychological perspective. *J. Int. Neuropsychol. Soc.* 23, 916–929.
- Mazziotta, J., Toga, A., Evans, A., Fox, P., Lancaster, J., Zilles, K., Woods, R., Paus, T., Simpson, G., Pike, B., Holmes, C., Collins, L., Thompson, P., MacDonald, D., Jacoboni, M., Schormann, T., Amunts, K., Palomero-Gallagher, N., Geyer, S., Parsons, L., Narr, K., Kabani, N., Le Goualher, G., Boomsma, D., Cannon, T., Kawashima, R., Mazoyer, B., 2001. A probabilistic atlas and reference system for the human brain: International Consortium for Brain Mapping (ICBM). *Philos. Trans. R Soc. Lond. B Biol. Sci.* 356, 1293–1322.
- Moore, D.M., D'Mello, A.M., McGrath, L.M., Stoodley, C.J., 2017. The developmental relationship between specific cognitive domains and grey matter in the cerebellum. *Dev. Cogn. Neurosci.* 24, 1–11.
- Mueller, A., Hong, D.S., Shepard, S., Moore, T., 2017. Linking ADHD to the neural circuitry of attention. *Trends Cogn. Sci.* 21, 474–488.
- Murgasova, M., Dyet, L., Edwards, D., Rutherford, M., Hajnal, J., Rueckert, D., 2007. Segmentation of brain MRI in young children. *Acad. Radiol.* 14, 1350–1366.
- Muzik, O., Chugani, D.C., Juhasz, C., Shen, C., Chugani, H.T., 2000. Statistical parametric mapping: assessment of application in children. *Neuroimage* 12, 538–549.
- Narr, K.L., Woods, R.P., Lin, J., Kim, J., Phillips, O.R., Del'Homme, M., Caplan, R., Toga, A.W., McCracken, J.T., Levitt, J.G., 2009. Widespread cortical thinning is a robust anatomical marker for attention-deficit/hyperactivity disorder. *J. Am. Acad. Child Adolesc. Psychiatry* 48, 1014–1022.
- Neely, R.J., Green, J.L., Sciberras, E., Hazell, P., Anderson, V., 2016. Relationship between executive functioning and symptoms of attention-deficit/hyperactivity disorder and autism spectrum disorder in 6–8 year old children. *J. Autism Dev. Disord.* 46, 3270–3280.
- Nigg, J.T., Stavro, G., Ettenhofer, M., Hambrick, D.Z., Miller, T., Henderson, J.M., 2005. Executive functions and ADHD in adults: evidence for selective effects on ADHD symptom domains. *J. Abnorm. Psychol.* 114, 706–717.
- Noordermeer, S.D., Luman, M., Oosterlaan, J., 2016. A systematic review and meta-analysis of neuroimaging in oppositional defiant disorder (ODD) and conduct disorder (CD) taking attention-deficit hyperactivity disorder (ADHD) into account. *Neuropsychol. Rev.* 26, 44–72.
- Noordermeer, S.D.S., Luman, M., Greven, C.U., Veroude, K., Faraone, S.V., Hartman, C.A., Hoekstra, P.J., Franke, B., Buitelaar, J.K., Heslenfeld, D.J., Oosterlaan, J., 2017. Structural brain abnormalities of attention-deficit/hyperactivity disorder with oppositional defiant disorder. *Biol. Psychiatry* 82, 642–650.
- Norman, L.J., Carlisi, C., Lukito, S., Hart, H., Mataix-Cols, D., Radua, J., Rubia, K., 2016. Structural and functional brain abnormalities in attention-deficit/hyperactivity disorder and obsessive-compulsive disorder: a comparative meta-analysis. *JAMA Psychiatry* 73, 815–825.
- Nutley, S.B., Soderqvist, S., Bryde, S., Humphreys, K., Klingberg, T., 2010. Measuring working memory capacity with greater precision in the lower capacity ranges. *Dev. Neuropsychol.* 35, 81–95.
- Peper, J.S., Brouwer, R.M., Boomsma, D.I., Kahn, R.S., Hulshoff Pol, H.E., 2007. Genetic influences on human brain structure: a review of brain imaging studies in twins. *Hum. Brain Mapp.* 28, 464–473.
- Pironti, V.A., Lai, M.C., Muller, U., Dodds, C.M., Suckling, J., Bullmore, E.T., Sahakian, B.J., 2014. Neuroanatomical abnormalities and cognitive impairments are shared by adults with attention-deficit/hyperactivity disorder and their unaffected first-degree relatives. *Biol. Psychiatry* 76, 639–647.
- Polanczyk, G., Rohde, L.A., 2007. Epidemiology of attention-deficit/hyperactivity disorder across the lifespan. *Curr. Opin. Psychiatry* 20, 386–392.
- Rissanen, J., 1978. Modeling by shortest data description. *Automatica* 14, 465–471.
- Rogers, J.C., De Brito, S.A., 2016. Cortical and subcortical gray matter volume in youths with conduct problems: a meta-analysis. *JAMA Psychiatry* 73, 64–72.
- Rubia, K., Cubillo, A., Woolley, J., Brammer, M.J., Smith, A., 2011. Disorder-specific dysfunctions in patients with attention-deficit/hyperactivity disorder compared to patients with obsessive-compulsive disorder during interference inhibition and attention allocation. *Hum. Brain Mapp.* 32, 601–611.
- Sanchez, C.E., Richards, J.E., Almlí, C.R., 2012. Age-specific MRI templates for pediatric neuroimaging. *Dev. Neuropsychol.* 37, 379–399.
- Stoodley, C.J., 2012. The cerebellum and cognition: evidence from functional imaging studies. *Cerebellum* 11, 352–365.
- Tarver, J., Daley, D., Sayal, K., 2014. Attention-deficit hyperactivity disorder (ADHD): an updated review of the essential facts. *Child Care Health Dev.* 40, 762–774.
- Valera, E.M., Faraone, S.V., Murray, K.E., Seidman, L.J., 2007. Meta-analysis of structural imaging findings in attention-deficit/hyperactivity disorder. *Biol. Psychiatry* 61, 1361–1369.
- van Ewijk, H., Heslenfeld, D.J., Zwiers, M.P., Faraone, S.V., Luman, M., Hartman, C.A., Hoekstra, P.J., Franke, B., Buitelaar, J.K., Oosterlaan, J., 2014. Different mechanisms of white matter abnormalities in attention-deficit/hyperactivity disorder: a diffusion tensor imaging study. *J. Am. Acad. Child Adolesc. Psychiatry* 53 (790–799), e793.
- van Rooij, D., Hoekstra, P.J., Mennes, M., von Rhein, D., Thissen, A.J., Heslenfeld, D., Zwiers, M.P., Faraone, S.V., Oosterlaan, J., Franke, B., Rommelse, N., Buitelaar, J.K., Hartman, C.A., 2015. Distinguishing adolescents with ADHD from their unaffected siblings and healthy comparison subjects by neural activation patterns during response inhibition. *Am. J. Psychiatry* 172, 674–683.
- Vetter, N.C., Buse, J., Backhausen, L.L., Rubia, K., Smolka, M.N., Roessner, V., 2018. Anterior insula hyperactivation in ADHD when faced with distracting negative

- stimuli. *Hum. Brain Mapp.* 39, 2972–2986.
- von Rhein, D., Mennes, M., van Ewijk, H., Groenman, A.P., Zwiers, M.P., Oosterlaan, J., Heslenfeld, D., Franke, B., Hoekstra, P.J., Faraone, S.V., Hartman, C., Buitelaar, J., 2015. The NeuroIMAGE study: a prospective phenotypic, cognitive, genetic and MRI study in children with attention-deficit/hyperactivity disorder. Design and descriptives. *Eur. Child Adolesc. Psychiatry* 24, 265–281.
- Wechsler, D., Van der Steene, G., Vertommen, H., Bleichrodt, N., Uiterwijk, J., 2000. WAIS-III: Nederlandstalige bewerking. Swets Test Publishers, Harcourt Test Publishers.
- Wilke, M., Altaye, M., Holland, S.K., Consortium, C.A., 2017. CerebroMatic: a versatile toolbox for spline-based MRI template creation. *Front. Comput. Neurosci.* 11, 5.
- Wilke, M., Holland, S.K., Altaye, M., Gaser, C., 2008. Template-O-Matic: a toolbox for creating customized pediatric templates. *Neuroimage* 41, 903–913.
- Wilke, M., Schmithorst, V.J., Holland, S.K., 2002. Assessment of spatial normalization of whole-brain magnetic resonance images in children. *Hum. Brain Mapp.* 17, 48–60.
- Wilke, M., Schmithorst, V.J., Holland, S.K., 2003. Normative pediatric brain data for spatial normalization and segmentation differs from standard adult data. *Magn. Reson. Med.* 50, 749–757.
- Willcutt, E.G., Doyle, A.E., Nigg, J.T., Faraone, S.V., Pennington, B.F., 2005. Validity of the executive function theory of attention-deficit/hyperactivity disorder: a meta-analytic review. *Biol. Psychiatry* 57, 1336–1346.
- Wolfers, T., van Rooij, D., Oosterlaan, J., Heslenfeld, D., Hartman, C.A., Hoekstra, P.J., Beckmann, C.F., Franke, B., Buitelaar, J.K., Marquand, A.F., 2016. Quantifying patterns of brain activity: Distinguishing unaffected siblings from participants with ADHD and healthy individuals. *Neuroimage Clin.* 12, 227–233.
- Wu, Z.M., Bralten, J., Cao, Q.J., Hoogman, M., Zwiers, M.P., An, L., Sun, L., Yang, L., Zang, Y.F., Franke, B., Wang, Y.F., 2017. White matter microstructural alterations in children with ADHD: categorical and dimensional perspectives. *Neuropsychopharmacology* 42, 572–580.
- Xu, L., Groth, K.M., Pearson, G., Schretlen, D.J., Calhoun, V.D., 2009. Source-based morphometry: the use of independent component analysis to identify gray matter differences with application to schizophrenia. *Hum. Brain Mapp.* 30, 711–724.
- Yoon, U., Fonov, V.S., Perusse, D., Evans, A.C., Brain Development Cooperative, G., 2009. The effect of template choice on morphometric analysis of pediatric brain data. *Neuroimage* 45, 769–777.