

ORIGINAL ARTICLE

Composition and enzymatic function of particle-associated and free-living bacteria: a coastal/offshore comparison

Lindsay D'Ambrosio, Kai Ziervogel, Barbara MacGregor, Andreas Teske and Carol Arnosti
Department of Marine Sciences, University of North Carolina at Chapel Hill, Chapel Hill, NC, USA

We compared the function and composition of free-living and particle-associated microbial communities at an inshore site in coastal North Carolina and across a depth profile on the Blake Ridge (offshore). Hydrolysis rates of six different polysaccharide substrates were compared for particle-associated (>3 μm) and free-living (<3 to 0.2 μm) microbial communities. The 16S rRNA- and rDNA-based clone libraries were produced from the same filters used to measure hydrolysis rates. Particle-associated and free-living communities resembled one another; they also showed similar enzymatic hydrolysis rates and substrate preferences. All six polysaccharides were hydrolyzed inshore. Offshore, only a subset was hydrolyzed in surface water and at depths of 146 and 505 m; just three polysaccharides were hydrolyzed at 505 m. The spectrum of bacterial taxa changed more subtly between inshore and offshore surface waters, but changed greatly with depth offshore. None of the OTUs occurred at all sites: 27 out of the 28 major OTUs defined in this study were found either exclusively in a surface or in a mid-depth/bottom water sample. This distinction was evident with both 16S rRNA and rDNA analyses. At the offshore site, despite the low community overlap, bacterial communities maintained a degree of functional redundancy on the whole bacterial community level with respect to hydrolysis of high-molecular-weight substrates.

The ISME Journal (2014) 8, 2167–2179; doi:10.1038/ismej.2014.67; published online 24 April 2014

Subject Category: Microbial ecology and functional diversity of natural habitats

Keywords: community composition; extracellular enzyme; carbon cycling; particle associated

Introduction

Marine bacteria determine the pathways and pace of numerous biogeochemical cycles. Heterotrophic microbial communities, in particular, are responsible for remineralizing and transforming a considerable fraction of autochthonous marine organic matter (Azam, 1998) that comprises most of the organic matter in marine systems (Hedges, 1992). These communities convert and respire dissolved organic matter, colonize and remineralize particles and aggregates and help shape the nature and quantity of carbon and nutrients that pass from surface waters to the deep ocean.

The first step in the microbial transformation of complex organic matter (autochthonous and terrestrial) is the hydrolysis of high-molecular-weight compounds by extracellular enzymes that yields sufficiently small substrates (ca. 600 Da) for uptake into the cell (Weiss *et al.*, 1991). These enzymes are produced by a fraction of the heterotrophic

microbial community and may also supply nonproducers with hydrolysate (Alldredge *et al.*, 1986; Herndl, 1988; Alldredge and Gotschalk, 1990; Simon *et al.*, 1990; Vetter and Deming, 1999). In particles and aggregates such as marine snow, enzyme activities (and overall rates of microbial metabolism) are typically higher than in the surrounding waters, and hence are considered biogeochemical hot spots (Karner and Herndl, 1992; Smith *et al.*, 1992; Ziervogel and Arnosti, 2008; Ziervogel *et al.*, 2010).

The nature and composition of aggregate-associated microbial communities compared with their free-living counterparts has therefore become a focal point of investigation (DeLong *et al.*, 1993; Acinas *et al.*, 1999; Crump *et al.*, 1999; Moeseneder *et al.*, 2001; Ghiglione *et al.*, 2009). However, these studies have provided little evidence of a consistent trend in community composition based solely on whether a community is free living or particle associated. Recently, it has been found that some bacterial types may switch lifestyles, depending on chemical triggers and substrate availability (Grossart, 2010). Bacterial community composition has also been shown to vary with many other factors, such as organic matter sources, particle residence times and geographic location (Crump *et al.*, 1999; Zhang *et al.*, 2007; Fuhrman *et al.*, 2008). In addition, light

Correspondence: C Arnosti, Department of Marine Sciences, University of North Carolina at Chapel Hill, 3117A Venable Hall, CB 3300, Chapel Hill, NC 27599, USA.

E-mail: arnosti@email.unc.edu

Received 1 August 2013; revised 19 March 2014; accepted 23 March 2014; published online 24 April 2014

or nutrient gradients have been shown to influence bacterial community composition and create zonation patterns (Wright *et al.*, 1997; Rocap *et al.*, 2003; Carlson *et al.*, 2008). Several large-scale investigations have recently confirmed a divide between community composition in surface waters (Pommier *et al.*, 2007; Fuhrman *et al.*, 2008; Wietz *et al.*, 2010) and in deep waters (DeLong *et al.*, 2006; Sogin *et al.*, 2006; Schattner *et al.*, 2009; Agogue *et al.*, 2011). These bacterial community shifts are not the only source of divergent activity patterns; cell-free enzymes can at times contribute substantially to substrate hydrolysis (Somville and Billen, 1983; Vetter and Deming, 1999; Pantoja and Lee, 1999; Ziervogel and Arnosti, 2008; Baltar *et al.*, 2010).

In this study, we investigated the links among metabolic capabilities, particle association and microbial community composition in waters of coastal North Carolina and across a nearby offshore depth gradient. Previous investigations of particle-associated and free-living communities have relied on the use of small substrate proxies for the determination of enzyme activities (Karner and Herndl, 1992; Crump *et al.*, 1998; Azúa *et al.*, 2003; Zoppini *et al.*, 2005). Such substrate proxies provide no information on activities of endo-acting enzymes that cleave polysaccharides mid-chain, an essential step in hydrolysis of organic matter (see Arnosti, 2011 for a review). Here, we used high-molecular-weight substrates, rather than substrate proxies, to investigate the capabilities of particle-associated microbial communities. For the first time, potential enzyme activities were measured directly from the same filters used for community composition analysis.

The potential activities of polysaccharide-hydrolyzing endo-acting enzymes were the focal point because high-molecular-weight carbohydrates constitute a large percentage of phytoplankton detritus as well as marine particulate and dissolved organic matter (Painter, 1983; Benner *et al.*, 1992; Biersmith and Benner, 1998; Lee *et al.*, 2004). Extracellular enzyme activities of microbial communities have been shown to vary by location and depth in the ocean (Arnosti *et al.*, 2005; Arnosti, 2011; Steen *et al.*, 2012) and can change through the process of aggregate formation (Ziervogel *et al.*, 2010). Moreover, different bacterial groups differ in their potential rates and enzymatic capabilities, as shown by bacterial isolates (Martinez *et al.*, 1996; Wegner *et al.*, 2013), genomic investigation (Glöckner *et al.*, 2003; Bauer *et al.*, 2006; Weiner *et al.*, 2008; Wegner *et al.*, 2013; Zimmerman *et al.*, 2013) and combined measurements of enzyme activities and microbial community composition in the field (Teske *et al.*, 2011; Arnosti *et al.*, 2012).

To determine the identities of the most active members of microbial communities, we constructed 16S rRNA-based clone libraries in addition to conventional 16S rRNA gene libraries. Dead or dormant organisms may still possess intact DNA

(Holm-Hansen *et al.*, 1968), but rRNA is expected to degrade quickly in the environment. In this manner, our sequencing strategy compares particle-associated and free-living microbial communities in both a coastal and an offshore setting (Crump *et al.*, 1999; Garneau *et al.*, 2009) in combination with rRNA-based identification of active microbial community members (Moeseneder *et al.*, 2001, 2005; Mills *et al.*, 2005; Ghiglione *et al.*, 2009; La Cono *et al.*, 2009). By obtaining nearly full-length sequences of the 16S rRNA gene for identification of the most abundant and active bacterial community members, we were able to investigate the compositional patterns of particle-associated and free-living bacterial communities, as well as their abilities to access a range of high-molecular-weight polysaccharides.

Materials and methods

Sample sites and sampling

Coastal surface water was collected at ca. 1 m water depth (total water depth ca. 3–4 m) from a pier at the University of North Carolina Institute of Marine Sciences (34°43'19.32" N, 76°45'7.37" W) on the north shore of Bogue Sound, behind the barrier islands near Cape Lookout, NC, in late October 2009. A 5-l carboy was triple rinsed and filled with surface water (20 °C and 34 PSU (practical salinity unit)) collected at the end of the pier. Offshore samples were collected in early December 2009 from the R/V *Cape Hatteras* at a station close to the shelf break of the Blake Ridge (34°11'02.399" N 75°49'22.799" W, water depth of 530 m), ~80 km off Cape Lookout (Supplementary Figure S1a). Three separate 5-l carboys were triple rinsed, and each was filled with water collected from different depths: 2 m 'surface', 146 m 'mid-depth' (sub-thermocline) and 505 m 'bottom', using a rosette of Niskin bottles attached to a Sea Bird (Bellevue, WA, USA) conductivity-temperature-depth (CTD) profiler with an SBE43 oxygen sensor and a Chelsea/Seatech/WET Labs CStar beam transmission sensor (Supplementary Figure S1b).

Sampling and filter preparation

Water samples were gravity filtered through a 3.0 µm pore size 45 mm diameter Isopore membrane filter (Millipore Corp., Bedford, MA, USA) that was placed in a separate filter holder upstream from a 0.2 µm pore size 45 mm diameter Durapore membrane filter (Millipore Corp.) in order to separate the particle-associated from the free-living community. These filter size cutoffs were chosen following other studies that have investigated free-living and particle-attached communities (Crump *et al.*, 1999; Smith *et al.*, 2013). Filtration occurred at 4 °C in the dark overnight. The coastal station sample was filtered on the day of collection. Over 17 h of filtration, 1.5-l of water passed through both filters. The gravity filtration of the offshore station carboys

began on shore on 14 December, 10 days after collection. The carboys were stored at 4 °C in the dark before filtration. The surface water was filtered overnight on the first day (3-l filtered), the mid-depth water was filtered on the second day (3-l filtered) and the bottom water was filtered on the third day (3-l filtered). Immediately after filtration, each filter was carefully sliced with sterile razor blades, and one quarter of each filter was frozen at -80 °C for microbial community composition analysis. The remaining three quarters of the filter were cut into 12 equal pieces for the immediate measurement of hydrolytic enzyme activities, using two pieces for each polysaccharide substrate. The microbial community collected on the filter was then immediately incubated to determine its enzymatic potential in time course assays.

Enzymatic hydrolysis measurements

To assess the potential activities and substrate specificities of different microbial extracellular enzymes in all samples, we measured the hydrolysis of six different fluorescently labeled polysaccharides by microbial communities collected on the 3 and 0.2 µm filter samples. We also measured hydrolysis in unfiltered water to assess the possible effects of filtration on hydrolysis rates and patterns.

Extracellular enzymatic activities were measured (Arnosti, 1995, 2003) using six fluorescently labeled polysaccharides: pullulan, an α(1,6)-linked polymer of maltotriose; laminarin, β(1,3) glucose; xylan, β(1,4) xylose; fucoidan, a sulfated fucose polysaccharide; arabinogalactan, a mixed polymer of galactose and arabinose; and chondroitin sulfate, a sulfated polymer of *N*-acetyl galactosamine and glucuronic acid. The polysaccharides (Sigma-Aldrich, St Louis, MO, USA) were labeled with fluoresceinamine and characterized as previously described (Arnosti, 2003).

Hydrolysis rates were measured using sections of the same filters used for molecular analysis. The filter pieces were placed into separate incubation vials containing 30 ml of autoclaved artificial sea water (Sigma-Aldrich). Killed controls consisted of vials containing autoclaved filter pieces in autoclaved artificial sea water. Triplicate incubations were also made with unfiltered water and with filtrate (remaining after passage through the 3 and 0.2 µm filters) for all samples and for the autoclaved controls. Substrates were added to all incubations and controls to a final concentration of 3.5 µM monomer equivalent. The coastal, offshore surface and offshore mid-depth samples were incubated at room temperature in the dark. The offshore bottom water was incubated at 5 °C in the dark. For the coastal incubations, subsamples (each ca. 1.5 ml) of sea water or artificial sea water were collected immediately after the substrate addition and after 1, 2, 6, 8, 13 and 29 days. The offshore incubations were subsampled immediately after substrate

addition and after 2, 7, 14, 21 and 28 days. The subsamples were filtered through 0.2 µm pore size filters and stored frozen (-20 °C) until analysis. Samples were measured using a gel permeation chromatography/high-performance liquid chromatography system with fluorescence detection, and polysaccharide hydrolysis rates were calculated as described previously (Arnosti, 1995, 2003). All rates should be regarded as potential rates because added substrate competes with naturally occurring substrate for enzyme active sites. The concentration of added substrate (on a carbon-equivalent basis) was approximately equal to 10% of the coastal and 20% of the offshore total dissolved organic carbon (DOC).

For each site (coastal, offshore at each of three depths), the sum of the hydrolysis rate measured for each of the six substrates is referred to as the 'summed hydrolysis rate'. We compared the potential hydrolysis rates at day 2 and at day 7 (offshore samples) or day 8 (coastal samples), time points by which most of the activities ultimately detected had developed. Over the entire time course of the experiment (28 days coastal, 29 days offshore), maximum rates of hydrolysis for each substrate were observed at or before 13 (coastal) or 14 (offshore) days; a detailed discussion of the time course is included as Supplementary Text and Supplementary Figure S2.

Cell counts and DOC measurements

Seawater samples were fixed with formaldehyde (2% v/v final concentration) shortly after sampling and stored at 4 °C. Bacteria were counted using 6-diamidino-2-phenylindole (0.1 µg l⁻¹ final concentration) as described previously (Porter and Feig, 1980). Using an epifluorescence microscope (Olympus, Tokyo, Japan) at ×1000 magnification equipped with a digital camera (Olympus TH4-100), cells from 10 randomly chosen frames were counted on duplicate slides. Next, 10 ml of the 0.2 µm filtered seawater samples was stored in combusted glass vials at -20 °C for DOC analysis. The samples were thawed, and an aliquot was withdrawn and acidified with phosphoric acid (50% v/v) to measure DOC concentrations by high temperature catalytic oxidation using a Shimadzu (Kyoto, Japan) TOC-5000.

Sequencing and phylogenetic analysis

Nucleic acid extraction, PCR and reverse transcriptase-PCR, cloning, sequencing and chimera checks of nearly full-length 16S rRNA and 16S rRNA gene sequences (*Escherichia coli* nucleotide positions 28 to 1492) were performed according to standard methods (Dempster *et al.*, 1999; Teske *et al.*, 2002; Thompson *et al.*, 2002; Huber *et al.*, 2004; see Supplementary Material for details on modifications). The sequences have Genbank accession numbers JN232982 to JN233703 and JN412852, as

included in the heat map (Supplementary Figure S3). Phylogenetic trees were constructed from 38 to 55 nonchimeric sequences for each library using the SILVA Release 104 SSU Ref database from www.arb-silva.de (Pruesse *et al.*, 2007) and the ARB Software environment, version 5.1 (Ludwig *et al.*, 2004). Preliminary ARB neighbor-joining trees were constructed, and clones forming long branches that were not clustering with well-documented marine pelagic bacterial lineages were manually rechecked for chimeras by BLASTing both ends separately. Operational taxonomic units (OTUs) were clustered at a 97% similarity cutoff using the furthest neighbor algorithm in mothur (Schloss *et al.*, 2009). For each aligned sequence data set, a model of best-fit nucleotide substitution was statistically determined using the jModeltest program (Posada, 2008) that uses PHYML (Guindon and Gascuel, 2003). The Akaike and Bayesian information criteria selection strategies chose the same model for each tree, which was the General Time Reversible plus Invariant sites plus Gamma (GTR + I + G) distributed model. Optimal distance trees were determined using the heuristic search mode of PAUP (Swofford, 2003) and employing the maximum likelihood parameters from jModeltest for the proportion of invariant sites, nucleotide frequencies, substitution rate matrix and gamma shape. The tree topologies were checked by bootstrap analysis (using the same parameters) based on 200 replicates. A heat map was constructed using all OTUs that represented five or more sequences to show their representation percentage within each clone library (Supplementary Figure S3). Rarefaction curves were constructed for each library using mothur (Supplementary Figure S4). The supplementary phylogenetic trees (Supplementary Figures S5a–e) also include the Genbank accession numbers. The FastUniFrac web program (Hamady *et al.*, 2009) was used for weighted and unweighted clustering and jackknife analysis of the 16S rRNA clone libraries.

Sample storage considerations

The offshore samples were stored for 10 days before filtration in the cold and dark, conditions that may have nevertheless affected community composition, even when assuming low community turnover because of an average generation time of ca. 100 h for pelagic bacteria in open-ocean waters (Yoshinaga *et al.*, 1991) or ca. 10 to 100 h for pelagic bacteria in coastal waters (Azam and Fuhrman, 1984; Iriberry *et al.*, 1990). Slow gravity filtration for >10 h may also affect RNA yields. However, the consistent detection of dominant uncultured bacterioplankton groups throughout all samples on DNA and RNA level, the strong differences in community composition in response to water mass and depth sampled and the absence of rRNA response peaks of enrichment-sensitive *Gammaproteobacteria* (especially the sensitive bottle enrichment marker

Colwellia; Stewart *et al.*, 2012) indicate that bottle effects in the unavoidable time interval between water sampling and cell capture by filtration were minimal. However, it is possible that the experimental design of this study has affected similarity analyses between free-living and particle-associated communities.

Results and discussion

Physical, chemical and biological characterization of offshore and coastal water masses

Three different water masses distinguished by CTD profile were sampled offshore (80 km from the coast), and additional samples were obtained from one coastal site (Supplementary Figure S1a). Offshore, at the surface, the temperature is characteristic of modified Gulf Stream surface water. The salinity maximum at mid-depth is indicative of the Subtropical Underwater layer, formed when evaporation increases salinity in Sargasso Sea surface water. This layer is relatively nutrient rich (Kameo *et al.*, 2004). Because of its higher density, this intermediate water mass sinks below the surface water and overlays fresher but colder water below (Worthington, 1982; O'Connor *et al.*, 2005). The oxygen profile from our CTD measurements (Supplementary Figure S1b) indicates an oxygenated mixed surface layer down to 70 m depth, an oxygen minimum beginning at mid-depth (110 m) and more oxygenated bottom water (below 450 m). This profile is similar to a profile measured in a previous study at nearly the same location (Cl eroux *et al.*, 2009).

The coastal water (ca. 20 °C) was cooler than the offshore surface water (25 °C) and also less saline (ca. 34 PSU compared with 36.3 PSU). DOC concentrations offshore were similar at all depths (113 ± 1 , 81 ± 2 and $103 \pm 37 \mu\text{M}$ DOC for the surface, mid-depth and bottom samples, respectively) and were ~45% of DOC concentration at the coastal station ($221 \pm 21 \mu\text{M}$ DOC).

Connecting bacterial communities and enzyme activity

The relationship between microbial communities and their extracellular activity is complex and dynamic. Differences in enzymatic capabilities in distinct regions of the ocean have been associated with differences in microbial community structure (Arnosti *et al.*, 2011, 2012); conversely, changes in enzymatic requirements because of substrate availability or other environmental parameters can drive changes in the structure of bacterial communities (Grossart *et al.*, 2007; Haynes *et al.*, 2007; Murray *et al.*, 2007; Grossart, 2010; Burke *et al.*, 2011; Teeling *et al.*, 2012). The enzymatic capabilities of microbial communities are likely controlled by a combination of specific hydrolytic capabilities of different bacterial types and feeding guilds, and their differential expression of enzymes (Arnosti, 2011). The measurement of enzymatic activities

with fluorescently labeled polysaccharides integrates these responses to bulk community functions that cannot yet be assigned to individual community members or taxonomic subgroups. Because of the time course incubations necessary for the measurement of hydrolysis rates, microbial communities can respond to substrates either by the activity of enzymes already present (associated with the cell or excreted to the environment), by the induction of enzymes or by the growth of specific members of the community. The experimental design of this study links potential substrate hydrolysis rates as community functions to community composition assessed at genus- and species-level taxonomic resolution by clone libraries that provide a measure of the extent and active members of the community at initiation of the hydrolysis experiments. In the following section we discuss inshore–offshore patterns in enzyme activities and microbial communities, depth patterns, comparisons of particle-associated and free-living communities and finally conclude by discussing the links between bacterial community composition and potential enzymatic activity.

Inshore–offshore differences in enzyme activities and microbial communities

Summed hydrolysis rates in whole water after 2 days of incubation were somewhat higher in coastal than in offshore waters (Figure 1a), but these differences in summed rates did not scale with the order-of-magnitude greater number of cells at the coastal station compared with the offshore station (Supplementary Figure S6). A comparison of hydrolysis rates after 7 or 8 days of incubation likewise shows only moderate differences in summed hydrolysis rates between coastal and offshore surface samples (Figures 1c and d).

The spectrum of substrates hydrolyzed, however, differed notably between the coastal and offshore stations. At the coastal station, all six substrates were readily hydrolyzed in whole water after 2 days of incubation (Figure 1a), but only three or four of the substrates were hydrolyzed in whole water from the different depths at the offshore station. After 7 or 8 days of incubation, hydrolysis of chondroitin became evident for the surface water offshore (Figure 1c). The spectrum of substrates hydrolyzed at the offshore station, however, remained narrower than at the coastal station, even upon extended incubation (Supplementary Figure S2). In the particle-associated and free-living fractions, initially a narrower spectrum of substrates was hydrolyzed (Figure 1b) compared with the whole water (Figure 1a), but with extended incubation time (Figure 1d; see also Supplementary Figure S2), the spectrum of substrates hydrolyzed in each sample became the same as initially observed for the corresponding location/depth in the whole water sample: six substrates for the coastal sample, and three or four substrates for the offshore station

(compare Figures 1a and d; note that pullulan hydrolysis was first detected in the mid-depth offshore samples after days 7/8; see Supplementary Figure S2).

The observation that somewhat extended incubation times were necessary to detect in the filter samples the range of activities initially observed in the whole water may be because of an initial reduction in cell numbers/activity immediately after filtration. As discussed at length in Arnosti (2003), detection of specific enzyme activities using fluorescently labeled polysaccharides requires hydrolysis of a sufficient portion of the total added polysaccharide to a molecular weight sufficiently small for the change to be resolved by gel permeation chromatography. A smaller starting population or a temporary reduction in activity of prokaryotes thus requires somewhat more time for hydrolysis to be detectable. This idea is supported by the observation that the spectrum of substrates ultimately hydrolyzed was the same for a sample from a given location (for example, for offshore surface water) for the whole water as for the filter-fractionated water samples (FL + PA), and that the maximum rate observed for whole water and for the filter-fractionated water samples (FL + PA) were also similar (compare the sum of the FL + PA rates in Figure 1d with the rates for whole water in Figure 1c).

Similar to the patterns of enzyme activities, patterns of 16S rDNA and rRNA sequences showed spatial distinctions. In general, the 16S rDNA and 16S rRNA sequences were commonly affiliated with specific bacterial lineages characteristic for the marine pelagic environment. Full-length phylotypes in this survey could be reliably identified at genus or intragenus level when culture isolates were available. Most conspicuously, all but one of the coastal and offshore libraries from surface waters included a high proportion of *Alphaproteobacteria* (Figure 2 and Supplementary Figure S5a); the exception was the nearshore, particulate, DNA-based library (discussed below). The mid-depth and bottom libraries from colder, deeper water offshore were dominated by *Gammaproteobacteria* (Figure 2 and Supplementary Figure S5b). This difference is consistent with patterns reported from other locations in the North Atlantic (Sogin *et al.*, 2006; Lauro and Bartlett, 2008; Schattener *et al.*, 2009; Agogué *et al.*, 2011). The offshore and coastal surface station libraries were similar and shared the SAR11 cluster, *Roseobacter*, *Bacteroidetes* and photosynthetic groups (Figure 2 and Supplementary Figure S5c), although *Actinobacteria* were found in the coastal samples but not offshore. Generally, these bacterial groups have been found in global surveys of ocean surface waters (Weitz *et al.*, 2010), and many of the coastal station surface groups match those found previously off Cape Hatteras (Rappé *et al.*, 1997). Whereas the rDNA and rRNA clone libraries from coastal surface waters were dominated by SAR11 and *Roseobacter* clones, respectively, other groups predominated in

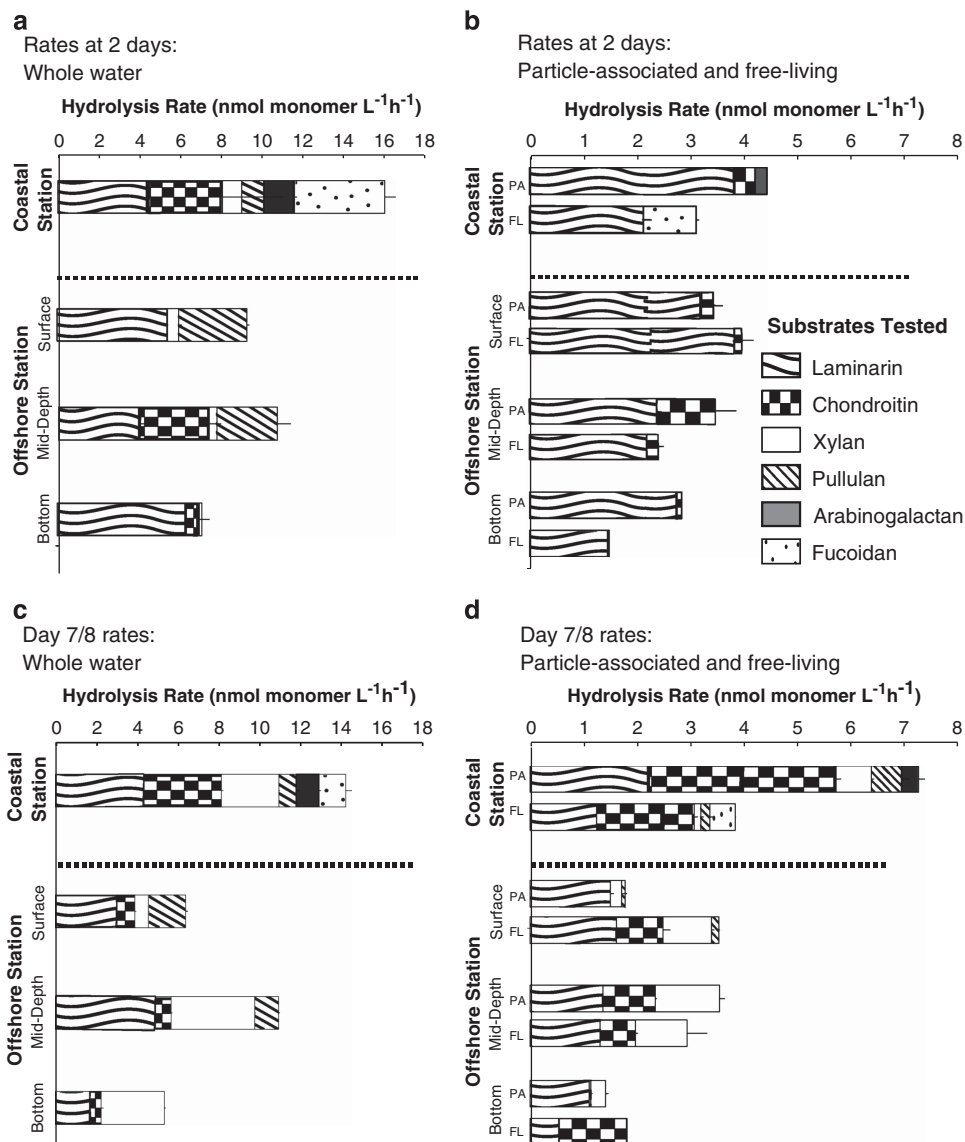


Figure 1 Enzymatic hydrolysis rates for coastal and offshore samples. (a) Hydrolysis rates for each substrate in whole water at 2 days; (b) hydrolysis rates for free-living (FL) and particle-associated (PA) fractions at 2 days; (c) hydrolysis rates for each substrate in whole water at 7 or 8 days; (d) hydrolysis rates for FL and PA fractions at 7 or 8 days. Bars show deviation between two replicates. See Supplementary Figure S2 for time courses of hydrolysis.

some of the offshore surface libraries (Figure 2). The particle-associated DNA library contained 33% clones closely related to the genus *Pseudoalteromonas* within the *Gammaproteobacteria*; the free-living RNA library contained 51% clones close to the genus *Thalassospira* within the *Alphaproteobacteria*.

The clone libraries showed distinct differences with depth. The mid-depth libraries from the Subtropical Underwater (Supplementary Figure S1b) showed distinctly low diversity; their unusual bacterial communities were dominated by *Gammaproteobacteria*, especially phylotypes related to the genera *Marinomonas*, *Oceaniserpentilla* and *Balneatrix* (Figure 2). Sequences affiliated with these genera occurred consistently in all four (particle associated and free living, and DNA and RNA

derived) mid-depth libraries; these groups were otherwise found in lower relative abundance in the offshore station bottom libraries. A cluster of clones related to the genus *Oceaniserpentilla* (Supplementary Figure S5b) was exclusive to the mid-depth libraries. Close relatives (99.6% nucleotide similarity) of this group, termed the Deepwater Horizon *Oceanospirillales*, were found to dominate water samples polluted by the subsurface hydrocarbon plume caused by the Deepwater Horizon oil spill in the Gulf of Mexico in 2010 (Hazen *et al.*, 2010; Mason *et al.*, 2012). Within the widely occurring *Bacteroidetes* phylum, an uncultured group originally found in the Atlantic Ocean (Alonso-Sáez *et al.*, 2006) dominated the mid-depth layer, and North Sea Flavobacterial groups (Alonso *et al.*, 2007)

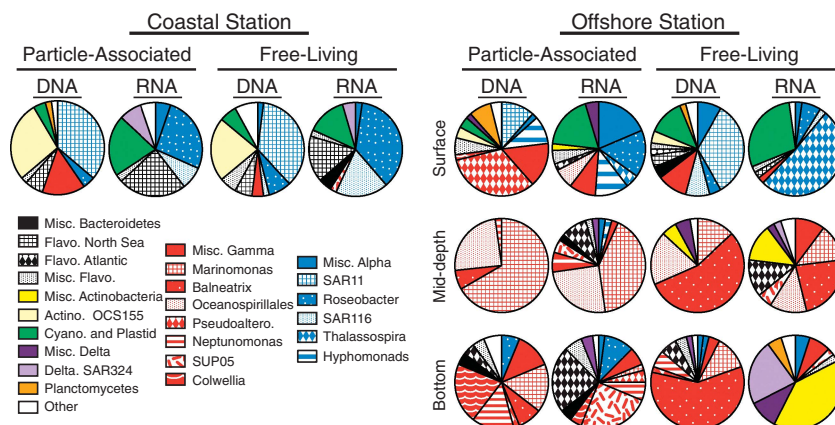


Figure 2 Bacterial community composition for all 16S rRNA and rRNA gene clone libraries. Taxonomic specificity ranges from phylum- to genus-level resolution when applicable. *Alphaproteobacteria* groups are shown in blue. *Gammaproteobacteria* groups are shown in red. Actino., *Actinobacteria*; Cyano., *Cyanobacteria*; Flavo., *Flavobacteria*; Pseudoaltero., *Pseudoalteromonas*. See Supplementary Information for color codes and specific OTUs.

dominated the coastal and offshore surface libraries (Supplementary Figure S5c).

In the offshore station bottom libraries, members of the genus *Colwellia* and the SUP05 cluster within the *Gammaproteobacteria* were observed (Walsh *et al.*, 2009; Marshall and Morris, 2012), in addition to *Bacteroidetes*, *Actinobacteria* and *Deltaproteobacteria* (mostly SAR324; Wright *et al.*, 1997). Based on single-cell genome sequencing, SAR324 (Supplementary Figure S5d) and SUP05 (Supplementary Figure S5b) were recently identified as candidate autotrophs (Swan *et al.*, 2011). The bottom free-living RNA library was distinct from all of the other clone libraries. This library was dominated by *Actinobacteria* and *Deltaproteobacteria* (Figure 2 and Supplementary Figure S5e) and mostly lacked the *Gammaproteobacteria* that dominated the other deep and mid-water clone libraries in this survey.

Depth effects

Although bacterial communities changed with depth extensively from genus- to phylum-level composition (see Supplementary Text for details), the ability to hydrolyze a particular substrate or set of substrates with depth changed more gradually (Figure 1). A narrower spectrum (fewer substrates) were hydrolyzed at the deepest depth for all samples—particle associated, free living and unfiltered water, with the bottom water communities hydrolyzing only laminarin, xylan and chondroitin, but not pullulan (or fucoidan or arabinogalactan that were hydrolyzed at the coastal station; Figure 1).

Greater selectivity in substrate hydrolysis with depth did not scale with changes in rates of hydrolysis of specific substrates, or with cell numbers. Laminarin, chondroitin and xylan hydrolysis rates, for example, did not change systematically with depth offshore (Figure 1). Moreover, summed hydrolysis rates on a per-cell basis in the mid-depth and bottom waters were approximately twice as high

as in surface waters (Supplementary Figure S6). Both of these results—a disconnect between cell numbers and summed activities, and increased (calculated) per-cell enzyme activities with depth—have been observed previously (Arnosti *et al.*, 2009; Baltar *et al.*, 2009). For example, cell counts in the mesopelagic ocean decreased faster with depth than hydrolytic activities (measured with small substrate proxies), such that the calculated per-cell activity increased with depth; these data implied a greater enzymatic production and demand for cellular carbon at depth (Baltar *et al.*, 2009). We find the same trend of increased extracellular enzyme activity per cell at depth, even with the loss of the ability to hydrolyze certain substrates (Figure 1). However, there was no significant reduction in summed hydrolysis rates with depth, and this is unusual compared with results from the few other investigations of polysaccharide hydrolysis over depth profiles (Arnosti *et al.*, 2005; Steen *et al.*, 2008, 2012). Ultimately, hydrolysis rates are a function of enzyme quantity and turnover number, parameters that cannot be defined in environmental samples with currently available techniques.

Depth-related changes in microbial community composition were quite distinct. A cluster diagram (Figure 3a) and heat map (Supplementary Figure S3) illustrate strong partitioning between the surface water and the deepwater column communities, often on the level of specific pelagic lineages that are defined by representative 16S rRNA gene phylotypes. With the exception of phylotypes within the genus *Pseudomonas*, all major OTUs (with more than five sequences) were found exclusively in either a surface-water station library (coastal or surface offshore) or in an offshore mid-depth or bottom site library (Supplementary Figure S3). The six most commonly found OTUs, which represented 37% of all clones, partitioned in this manner. None of the OTUs was found in all of the samples; none of the OTUs was found at all depths in the offshore station.

A dendrogram created with Fast UniFrac analysis robustly confirms the surface–subsurface divide; whether OTU abundances are taken into account (Figure 3a) or not (Supplementary Figure S7), most surface-water libraries form a group distinct from the subsurface water column libraries. Dendrograms of enzyme activities after 2 days and after 7/8 days of incubation illustrate the evolution in hydrolysis patterns with time, with increasing separation of the coastal particle-associated fraction from the other fractions (Figures 3b and c). The coastal particle-associated fraction developed the full spectrum of 6 activities at 7/8 days, whereas the free-living coastal fraction only showed all activities at the 13 day time point (Supplementary Figure S2).

In the mid-depth offshore libraries, all bacterial lineages represented in the DNA clone libraries were also represented in the RNA libraries (but not vice versa) (Supplementary Figure S3). In other words, bacterial cells that contribute substantially to the DNA pool are also active, possibly indicating tight coupling between bacterial community composition and activity. This trend toward tighter coupling of bacterial presence and activity was previously attributed to decreased oxidative stress in anoxic deep water (Brettar *et al.*, 2012) but is documented here in oxygenated deep waters. In contrast to the mid-water sample, the offshore surface and deepwater samples as well as the coastal station contain several OTUs that appear on DNA level but without counterparts in the RNA data sets, indicating some bacterial populations with attenuated activity and rRNA content, or entirely inactive populations (Supplementary Figure S3).

Particle-associated and free-living community composition and hydrolytic activity

The extent to which particle-attached and free-living communities differ likely depends in part on particle integrity and residence time in a given location. It has been suggested that longer particle residence times, which are often found in estuaries and coastal systems, favor the development of phylogenetically distinct particle-associated and free-living groups (Crump *et al.*, 1999, 2004; Selje and Simon, 2003; Zhang *et al.*, 2007), but this trend is not observed in all coastal areas (Crump *et al.*, 1999; Garneau *et al.*, 2009). In contrast, Acinas *et al.* (1999) saw stronger differences between particle-associated and free-living bacteria at the surface than at depth (400 m) in the Mediterranean. Moeseneder *et al.* (2001) saw consistent differences between particle-associated and free-living bacterial communities at all depths (down to 1000 m) in the Aegean Sea, where temperature and salinity gradients were minor or nonexistent with depth. In this data set, the compositional differences between the particle-associated and the free-living communities did not change systematically with depth (Figure 2). Particle-associated and free-living communities exhibited similar summed hydrolysis rates (Figures 1b and d), although the time point at which some enzyme activities were detected differed (Supplementary Figure S2). In any case, at each depth the particle-associated and free-living water fractions ultimately hydrolyzed the same spectrum of substrates as the unfiltered fraction (Figure 1 and

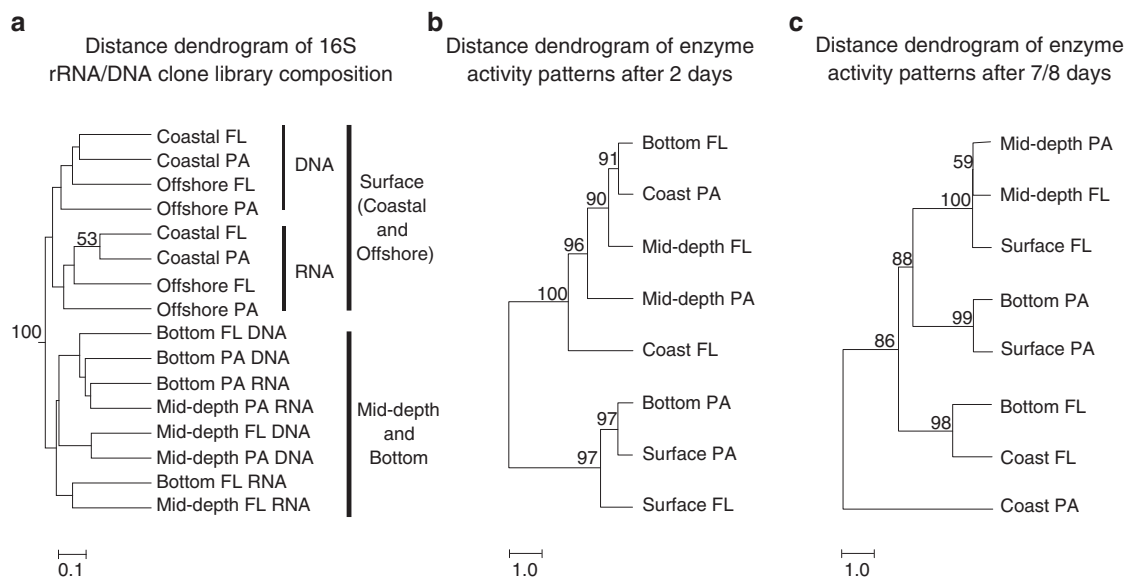


Figure 3 (a) Cluster diagram of all 16S rDNA and rRNA clone libraries, constructed with fast UniFrac using the weighted option that takes into account OTU abundances. The scale bar shows the distance between clusters in UniFrac units: a distance of 0 means that two samples are identical, and a distance of 0.5 means that two samples contain mutually exclusive lineages. Particle-associated libraries are in bold. The numbers show the support for each node as determined by jackknife analysis. FL, free living; PA, particle associated. (b) Cluster diagram of enzyme activities after incubation for 2 days. (c) Cluster diagram of enzyme activities after incubation for 7 or 8 days. See Figure 1 for hydrolysis rates. Pairwise Euclidean distances between the samples were calculated using the software program R. Bootstrap numbers shown are the approximately unbiased *P*-values that were calculated using the R package pvclust (Suzuki and Shimodaira, 2011) with the Ward method.

Supplementary Figure S2). In the filtrate (<0.2 µm), hydrolysis was only measurable for laminarin, and only in the coastal station sample (data not shown), suggesting little contribution from freely dissolved enzymes to substrate hydrolysis at these locations. Similar contributions by particle-associated and free-living bacteria to the degradation of organic matter have been observed in other studies, including in the degradation of *Phaeocystis* biomass (Becquevort *et al.*, 1998) and in rates of hydrolysis of bacterial isolates from the Southern California Bight (Martinez *et al.*, 1996). However, in some circumstances, hydrolytic activity has varied between particle-associated and free-living bacteria (Azúa *et al.*, 2003).

Functional redundancy in enzymatic capabilities

Defining the complex linkages between microbial community composition and hydrolytic capabilities is important in order to understand the carbon cycling capabilities of microbial communities in the ocean. Pelagic microbial communities from diverse locations can differ considerably in hydrolytic capabilities (see, for example, Arnosti *et al.*, 2005, 2011, 2012; Steen *et al.*, 2012); yet, two compositionally different communities in surface and bottom waters of an Arctic fjord demonstrated similar hydrolytic capabilities and thus functional redundancy (Teske *et al.*, 2011). Functional redundancy in enzymatic capabilities occurs when multiple groups of bacteria share the capacity to use a substrate, often a substrate that is widely available. As an example, laminarin (a common algal storage product; Painter, 1983) was hydrolyzed quickly by all samples in this study and others (Arnosti, 2008; Steen *et al.*, 2008; Arnosti *et al.*, 2009), possibly because of the wide distribution of laminarin hydrolytic capability across microbial phyla and subphyla. Several cultured marine bacteria (*Pseudoalteromonas tetraodonis*, *Sulfitobacter pontiacus* and *Vibrio splendidus*) that are closely related to Gamma- and Alpha-proteobacterial phylotypes in our clone libraries have been shown to grow on laminarin as a sole carbon source (Alderkamp *et al.*, 2007). In contrast, fucoidan hydrolysis is often minimal or not measurable in the water column (Arnosti, 2004; Arnosti *et al.*, 2005, 2011; Teske *et al.*, 2011), and fucose-containing polysaccharides have been identified as remineralization 'problems' (Amon *et al.*, 2001) even though ubiquitous transparent exopolymers contain high concentrations of sulfated deoxysugars with composition corresponding to fucoidan (Allredge *et al.*, 1993; Mopper *et al.*, 1995). The variable extent of functional redundancy among microbial communities thus complicates efforts to link specific bacteria with enzymatic function.

This study, the first to use high-molecular-weight substrates to compare hydrolytic activity and community composition from the same filters,

demonstrates several biogeographic trends of bacterial diversity and function in the marine water column:

- (A) Partitioning of microbial community composition was apparent in (1) the contrast between surface waters (coastal and offshore) and offshore subsurface waters; and (2) some differences among the three offshore water depths, where vertical particle flux is evidently insufficient to homogenize the particle-associated communities across water depths.
- (B) The differences in the spectrum of enzyme activities between the coastal and offshore surface stations, as well as between the surface water and bottom water offshore stations, demonstrate that the extent to which a high-molecular-weight substrate is bioavailable depends on microbial community capabilities, and not just on the chemical structure of the substrate. The similarity of summed hydrolysis rates, despite considerable differences in cell abundance, suggests that mid-depth and deep water communities maintain the ability to react strongly to the presence of substrates for which they have appropriate enzymes.
- (C) Functional redundancy is also evident in the range of high-molecular-weight substrates hydrolyzed: regardless of the low community overlap at the genus level, bacterial communities at different water depths are apparently capable of hydrolyzing a similar set of substrates, in this case laminarin, chondroitin and xylan. Apparently, representatives of many microbial lineages may have the correct enzymes to access specific polysaccharides.
- (D) Nonetheless, community differences with depth are consistent with the loss of certain enzymatic activities in deep water compared with surface waters (Figure 1), suggesting fundamental differences in the abilities of these communities to access diverse substrates. The changing taxonomic profiles of the bacterial community in the water column ultimately translate into changing hydrolysis patterns and show the range as well as the limits of functional redundancy.

Conflict of Interest

The authors declare no conflict of interest.

Acknowledgements

Patrick Gibson and the captain and crew of the R/V *Cape Hatteras* kindly collected the offshore waters for us; Dr Steven Ross, chief scientist, gave permission to collect samples. We thank Sherif Ghobrial for assistance with sample processing in the lab. This project was supported by NSF (OCE-0848703 and -1332881 to CA). We are very grateful to Antje Boetius and two anonymous reviewers for their suggestions that considerably improved the manuscript.

References

- Acinas S, Anton J, Rodriguez-Valera F. (1999). Diversity of free-living and attached bacteria in offshore western Mediterranean waters as depicted by analysis of genes encoding 16S rRNA. *Appl Environ Microbiol* **65**: 514–522.
- Agogué H, Lamy D, Neal PR, Sogin ML, Herndl GJ. (2011). Water mass-specificity of bacterial communities in the North Atlantic revealed by massively parallel sequencing. *Mol Ecol* **20**: 258–274.
- Alderkamp AC, Van Rijssel M, Bolhuis H. (2007). Characterization of marine bacteria and the activity of their enzyme systems involved in degradation of the algal storage glucan laminarin. *FEMS Microbiol Ecol* **59**: 108–117.
- Allredge AL, Cole JJ, Caron DA. (1986). Production of heterotrophic bacteria inhabiting macroscopic organic aggregates (marine snow) from surface waters. *Limnol Oceanogr* **31**: 68–78.
- Allredge AL, Gotschalk CC. (1990). The relative contribution of marine snow of different origins to biological processes in coastal waters. *Cont Shelf Res* **10**: 41–58.
- Allredge AL, Passow U, Logan BE. (1993). The abundance and significance of a class of large, transparent organic particles in the ocean. *Deep Sea Res I* **40**: 1131–1140.
- Alonso C, Warnecke F, Amann R, Pernthaler J. (2007). High local and global diversity of Flavobacteria in marine plankton. *Environ Microbiol* **9**: 1253–1266.
- Alonso-Sáez L, Aristegui J, Pinhassi J, Gómez-Consarnau L, González JM, Vaqué D *et al*. (2006). Bacterial assemblage structure and carbon metabolism along a productivity gradient in the NE Atlantic Ocean. *Aquat Microb Ecol* **46**: 43–53.
- Amon RMW, Fitznar HP, Benner R. (2001). Linkages among the bioreactivity, chemical composition, and diagenetic state of marine dissolved organic matter. *Limnol Oceanogr* **46**: 287–297.
- Arnosti C. (1995). Measurement of depth- and site-related differences in polysaccharide hydrolysis rates in marine sediments. *Geochim Cosmochim Acta* **59**: 4247–4257.
- Arnosti C. (2003). Fluorescent derivatization of polysaccharides and carbohydrate-containing biopolymers for measurement of enzyme activities in complex media. *J Chromatogr B* **793**: 181–191.
- Arnosti C. (2004). Speed bumps and barricades in the carbon cycle: substrate structural effects on carbon cycling. *Mar Chem* **92**: 263–273.
- Arnosti C. (2008). Functional differences between Arctic seawater and sedimentary microbial communities: contrasts in microbial hydrolysis of complex substrates. *FEMS Microbiol Ecol* **66**: 343–351.
- Arnosti C. (2011). Microbial extracellular enzymes and the marine carbon cycle. *Ann Rev Mar Sci* **3**: 401–425.
- Arnosti C, Durkin S, Jeffrey WH. (2005). Patterns of extracellular enzyme activities among pelagic marine microbial communities: implications for cycling of dissolved organic carbon. *Aquat Microb Ecol* **38**: 135–145.
- Arnosti C, Ziervogel K, Ocampo L, Ghobrial S. (2009). Enzyme activities in the water column and in shallow permeable sediments from the northeastern Gulf of Mexico. *Estuar Coast Shelf Sci* **84**: 202–208.
- Arnosti C, Steen AD, Ziervogel K, Ghobrial S, Jeffrey WH. (2011). Latitudinal gradients in degradation of marine dissolved organic carbon. *PLoS One* **6**: e28900.
- Arnosti C, Fuchs BM, Amann R, Passow U. (2012). Contrasting extracellular enzyme activities of particle associated bacteria from distinct provinces of the North Atlantic Ocean. *Front Microbiol* **3**: 425.
- Azam F. (1998). Microbial control of oceanic carbon flux: the plot thickens. *Science* **280**: 694–695.
- Azam F, Fuhrman JA. (1984). Measurement of bacterioplankton growth in the sea and its regulation by environmental conditions. In: Hobbie JE, Williams PJ (eds) *Heterotrophic Activity in the Sea*. Plenum Publishing Corp: New York, pp 179–196.
- Azúa I, Unanue M, Ayo B, Artolozaga I, Arrieta JM, Iriberrri J. (2003). Influence of organic matter quality in the cleavage of polymers by marine bacterial communities. *J Plankton Res* **25**: 1451–1460.
- Baltar F, Aristegui J, Sintés E, Van Aken HM, Gasol JM, Herndl GJ. (2009). Prokaryotic extracellular enzymatic activity in relation to biomass production and respiration in the meso- and bathypelagic waters of the (sub) tropical Atlantic. *Environ Microbiol* **11**: 1998–2014.
- Baltar F, Aristegui J, Gasol JM, Sintés E, Van Aken HM, Herndl GJ. (2010). High dissolved extracellular enzymatic activity in the deep central Atlantic Ocean. *Aquat Microb Ecol* **58**: 287–302.
- Bauer M, Kube M, Teeling H, Richter M, Lombardot T, Allers E *et al*. (2006). Whole genome analysis of the marine *Bacteroidetes* “Gramella forsetii” reveals adaptations to degradation of polymeric organic matter. *Environ Microbiol* **8**: 2201–2213.
- Becquevort S, Rousseau V, Lancelot C. (1998). Major and comparable roles for free-living and attached bacteria in the degradation of *Phaeocystis*-derived organic matter in Belgian coastal waters of the North Sea. *Aquat Microb Ecol* **14**: 39–48.
- Benner R, Pakulski J, McCarthy M, Hedges JI, Hatcher PG. (1992). Bulk chemical characteristics of dissolved organic matter in the ocean. *Science* **255**: 1561.
- Biersmith A, Benner R. (1998). Carbohydrates in phytoplankton and freshly produced dissolved organic matter. *Mar Chem* **63**: 131–144.
- Brettar I, Christen R, Hofle MG. (2012). Analysis of bacterial core communities in the central Baltic by comparative RNA-DNA-based fingerprinting provides links to structure-function relationships. *ISME J* **6**: 195–212.
- Burke C, Steinberg P, Rusch DB, Kjelleberg S, Thomas T. (2011). Bacterial community assembly based on functional genes rather than species. *Proc Natl Acad Sci USA* **108**: 14288–14293.
- Carlson CA, Morris R, Parsons R, Treusch AH, Giovannoni SJ, Vergin K. (2008). Seasonal dynamics of SAR11 populations in the euphotic and mesopelagic zones of the northwestern Sargasso Sea. *ISME J* **3**: 283–295.
- Cléroux C, Lynch-Stieglitz J, Schmidt MW, Cortijo E, Duplessy J-C. (2009). Evidence for calcification depth change of *Globorotalia truncatulinoides* between deglaciation and Holocene in the Western Atlantic Ocean. *Mar Micropaleontol* **73**: 57–61.
- Crump BC, Baross JA, Simenstad CA. (1998). Dominance of particle-attached bacteria in the Columbia River estuary, USA. *Aquat Microb Ecol* **14**: 7–18.
- Crump B, Armbrust E, Baross J. (1999). Phylogenetic analysis of particle-attached and free-living bacterial communities in the Columbia river, its estuary, and the adjacent coastal ocean. *Appl Environ Microbiol* **65**: 3192–3204.

- Crump BC, Hopkinson CS, Sogin ML, Hobbie JE. (2004). Microbial biogeography along an estuarine salinity gradient: combined influences of bacterial growth and residence time. *Appl Environ Microbiol* **70**: 1494–1505.
- DeLong EF, Franks DG, Alldredge AL. (1993). Phylogenetic diversity of aggregate-attached vs free-living marine bacterial assemblages. *Limnol Oceanogr* **38**: 924–934.
- DeLong EF, Preston CM, Mincer T, Rich V, Hallam SJ, Frigaard NU *et al.* (2006). Community genomics among stratified microbial assemblages in the ocean's interior. *Science* **311**: 496–503.
- Dempster EL, Pryor KV, Francis D, Young JE, Rogers HJ. (1999). Rapid DNA extraction from ferns for PCR-based techniques. *Biotechniques* **27**: 66–68.
- Fuhrman JA, Steele JA, Hewson I, Schwabach MS, Brown MV, Green JL *et al.* (2008). A latitudinal diversity gradient in planktonic marine bacteria. *Proc Natl Acad Sci USA* **105**: 7774–7778.
- Garneau MC, Vincent WF, Terrado R, Lovejoy C. (2009). Importance of particle-associated bacterial heterotrophy in a coastal Arctic ecosystem. *J Marine Syst* **75**: 185–197.
- Chiglione JF, Conan P, Pujo-Pay M. (2009). Diversity of total and active free-living vs particle-attached bacteria in the euphotic zone of the NW Mediterranean Sea. *FEMS Microbiol Lett* **299**: 9–21.
- Glöckner FO, Kube M, Bauer M, Teeling H, Lombardot T, Ludwig W *et al.* (2003). Complete genome sequence of the marine planctomycete *Pirellula* sp. strain 1. *Proc Natl Acad Sci USA* **100**: 8298.
- Grossart H-P. (2010). Ecological consequences of bacterioplankton lifestyles: changes in concepts are needed. *Environ Microb Rep* **2**: 706–714.
- Grossart H-P, Engel A, Arnosti C, De La Rocha C, Murray A, Passow U. (2007). Microbial dynamics in autotrophic and heterotrophic seawater mesocosms: III Organic matter fluxes. *Aquat Microb Ecol* **49**: 143–156.
- Guindon S, Gascuel O. (2003). A simple, fast, and accurate algorithm to estimate large phylogenies by maximum likelihood. *Syst Biol* **52**: 696–704.
- Hamady M, Lozupone C, Knight R. (2009). Fast UniFrac: facilitating high-throughput phylogenetic analyses of microbial communities including analysis of pyrosequencing and PhyloChip data. *ISME J* **4**: 17–27.
- Haynes K, Hofmann TA, Smith CJ, Ball AS, Underwood GJC, Osborn AM. (2007). Diatom-derived carbohydrates as factors affecting bacterial community composition in estuarine sediments. *Appl Environ Microbiol* **73**: 6112–6124.
- Hazen TC, Dubinsky EA, DeSantis TZ, Andersen GL, Piceno YM, Singh N *et al.* (2010). Deep-sea oil plume enriches indigenous oil-degrading bacteria. *Science* **330**: 204–208.
- Hedges JI. (1992). Global biogeochemical cycles: progress and problems. *Mar Chem* **39**: 67–93.
- Herndl GJ. (1988). Ecology of amorphous aggregations (marine snow) in the Northern Adriatic Sea. II. Microbial density and activity in marine snow and its implication to overall pelagic processes. *Mar Ecol Prog Ser* **48**: 265–275.
- Holm-Hansen O, Sutcliffe Jr WH, Sharp J. (1968). Measurement of deoxyribonucleic acid in the ocean and its ecological significance. *Limnol Oceanogr* **13**: 507–514.
- Huber T, Faulkner G, Hugenholtz P. (2004). Bellerophon: a program to detect chimeric sequences in multiple sequence alignments. *Bioinformatics* **20**: 2317–2319.
- Iriberry J, Unanue M, Ayo B, Barcina I, Egea L. (1990). Bacterial production and growth rate estimation from [³H]thymidine incorporation for attached and free-living bacteria in aquatic systems. *Appl Environ Microbiol* **56**: 483–487.
- Kameo K, Shearer MC, Droxler AW, Mita I, Watanabe R, Sato T. (2004). Glacial-interglacial surface water variations in the Caribbean Sea during the last 300 ky based on calcareous nannofossil analysis. *Palaeogeogr Palaeoclimatol Palaeoecol* **212**: 65–76.
- Karner M, Herndl G. (1992). Extracellular enzymatic activity and secondary production in free-living and marine snow-associated bacteria. *Marine Biol* **113**: 341–347.
- La Cono V, Tamburini C, Genovese L, Spada GL, Denaro R, Yakimov MM. (2009). Cultivation-independent assessment of the bathypelagic archaeal diversity of Tyrrhenian Sea: Comparative study of rDNA and rRNA-derived libraries and influence of sample decompression. *Deep Sea Res II* **56**: 768–773.
- Lauro FM, Bartlett DH. (2008). Prokaryotic lifestyles in deep sea habitats. *Extremophiles* **12**: 15–25.
- Lee C, Wakeham SG, Arnosti C. (2004). Particulate organic matter in the sea: the composition conundrum. *Ambio* **33**: 559–568.
- Ludwig W, Strunk O, Westram R, Richter L, Meier H, Yadhukumar *et al.* (2004). ARB: a software environment for sequence data. *Nucl Acids Res* **32**: 1363–1371.
- Martinez J, Smith D, Steward G, Azam F. (1996). Variability in ectohydrolytic enzyme activities of pelagic marine bacteria and its significance for substrate processing in the sea. *Aquat Microb Ecol* **10**: 223–230.
- Marshall KT, Morris RM. (2012). Isolation of an aerobic sulfur oxidizer from the SUP05/Arctic96BD-19 clade. *ISME J* **7**: 452–455.
- Mason OU, Hazen TC, Borglin S, Chain PS, Dubinsky EA, Fortney JL *et al.* (2012). Metagenome, metatranscriptome and single-cell sequencing reveal microbial response to Deepwater Horizon oil spill. *ISME J* **6**: 1715–1727.
- Mills HJ, Martinez RJ, Story S, Sobecky PA. (2005). Characterization of microbial community structure in Gulf of Mexico gas hydrates: comparative analysis of DNA- and RNA-derived clone libraries. *Appl Environ Microbiol* **71**: 3235–3247.
- Moeseneder M, Winter C, Herndl G. (2001). Horizontal and vertical complexity of attached and free-living bacteria of the eastern Mediterranean Sea, determined by 16S rDNA and 16S rRNA fingerprints. *Limnol Oceanogr* **46**: 95–107.
- Moeseneder MM, Arrieta JM, Herndl GJ. (2005). A comparison of DNA- and RNA-based clone libraries from the same marine bacterioplankton community. *FEMS Microbiol Ecol* **51**: 341–352.
- Mopper K, Zhou J, Sri Ramana K, Passow U, Dam HG, Drapeau DT. (1995). The role of surface-active carbohydrates in the flocculation of a diatom bloom in a mesocosm. *Deep Sea Res II* **42**: 47–73.
- Murray AE, Arnosti C, De La Rocha CL, Grossart HP, Passow U. (2007). Microbial dynamics in autotrophic and heterotrophic seawater mesocosms. II. Bacterioplankton community structure and hydrolytic enzyme activities. *Aquat Microb Ecol* **49**: 123–141.
- O'Connor BM, Fine RA, Olson DB. (2005). A global comparison of subtropical underwater formation rates. *Deep Sea Res I* **52**: 1569–1590.

- Painter TJ. Algal polysaccharides (1983). In: Aspinall GO (ed) *The Polysaccharides* vol. 2. Academic Press: New York, pp 195–285.
- Pantoja S, Lee C. (1999). Peptide decomposition by extracellular hydrolysis in coastal seawater and salt marsh sediment. *Mar Chem* **63**: 273–291.
- Pommier T, Canbäck B, Riemann L, Boström KH, Simu K, Lundberg P *et al.* (2007). Global patterns of diversity and community structure in marine bacterioplankton. *Mol Ecol* **16**: 867–880.
- Porter KG, Feig YS. (1980). The use of DAPI for identifying and counting aquatic microflora. *Limnol Oceanogr* **25**: 943–948.
- Posada D. (2008). jModelTest: Phylogenetic Model Averaging. *Mol Biol Evol* **25**: 1253–1256.
- Pruesse E, Quast C, Knittel K, Fuchs BM, Ludwig W, Peplies J *et al.* (2007). SILVA: a comprehensive online resource for quality checked and aligned ribosomal RNA sequence data compatible with ARB. *Nucl Acids Res* **35**: 7188–7196.
- R Core Team (2014). *R: A Language and Environment for Statistical Computing*. R Foundation for Statistical Computing: Vienna, Austria. <http://www.R-project.org/>.
- Rappé MS, Kemp PF, Giovannoni SJ. (1997). Phylogenetic diversity of marine coastal picoplankton 16S rRNA genes cloned from the continental shelf off Cape Hatteras, North Carolina. *Limnol Oceanogr* **42**: 811–826.
- Rocap G, Larimer FW, Lamerdin J, Malfatti S, Chain P, Ahlgren NA *et al.* (2003). Genome divergence in two *Prochlorococcus* ecotypes reflects oceanic niche differentiation. *Nature* **424**: 1042–1047.
- Schattenhofer M, Fuchs BM, Amann R, Zubkov MV, Tarran GA, Perenthaler J. (2009). Latitudinal distribution of prokaryotic picoplankton populations in the Atlantic Ocean. *Environ Microbiol* **11**: 2078–2093.
- Schloss PD, Westcott SL, Ryabin T, Hall JR, Hartmann M, Hollister EB *et al.* (2009). Introducing mothur: open-source, platform-independent, community-supported software for describing and comparing microbial communities. *Appl Environ Microbiol* **75**: 7537–7541.
- Selje N, Simon M. (2003). Composition and dynamics of particle-associated and free-living bacterial communities in the Weser estuary, Germany. *Aquat Microb Ecol* **30**: 221–237.
- Simon M, Alldredge AL, Azam F. (1990). Bacterial carbon dynamics on marine snow. *Mar Ecol Prog Ser* **65**: 205–211.
- Smith DC, Simon M, Alldredge A, Azam F. (1992). Intense hydrolytic enzyme activity on marine aggregates and implications for rapid particle dissolution. *Nature* **359**: 139–142.
- Smith MW, Allen LZ, Allen AE, Herfort L, Simon HM. (2013). Contrasting genomic properties of free-living and particle-attached microbial assemblages within a coastal ecosystem. *Front Microbiol* **4**: 120.
- Sogin ML, Morrison HG, Huber JA, Welch DM, Huse SM, Neal PR *et al.* (2006). Microbial diversity in the deep sea and the underexplored “rare biosphere”. *Proc Natl Acad Sci USA* **103**: 12115–12120.
- Somville M, Billen G. (1983). A method for determining exoproteolytic activity in natural waters. *Limnol Oceanogr* **28**: 109–193.
- Steen AD, Hamdan LJ, Arnosti C. (2008). Dynamics of dissolved carbohydrates in the Chesapeake Bay: insights from enzyme activities, concentrations, and microbial metabolism. *Limnol Oceanogr* **53**: 936–947.
- Steen AD, Ziervogel K, Ghobrial S, Arnosti C. (2012). Functional variation among polysaccharide-hydrolyzing microbial communities in the Gulf of Mexico. *Marine Chem* **138–139**: 13–20.
- Stewart F, Dalsgaard T, Young CR, Thamdrup B, Revsbech NP, Ulloa O, Canfield DE, DeLong EF. (2012). Experimental incubations elicit profound changes in community transcription in OMZ bacterioplankton. *PLoS One* **7**(5): e37118.
- Swan BK, Martinez-Garcia M, Preston CM, Sczyrba A, Woyke T, Lamy D *et al.* (2011). Potential for chemolithoautotrophy among ubiquitous bacteria lineages in the dark ocean. *Science* **333**: 1296–1300.
- Suzuki R, Shimodaira H. (2011). pvclust: Hierarchical Clustering with P-Values via Multiscale Bootstrap Resampling. R package version 1.2-2. <http://CRAN.R-project.org/package=pvclust>.
- Swofford DL. (2003). *PAUP*. Phylogenetic Analysis Using Parsimony and Other Methods. Version 4*. Sinauer Associates: Sunderland, MA.
- Teske A, Durbin A, Ziervogel K, Cox C, Arnosti C. (2011). Microbial community composition and function in permanently cold seawater and sediments from an arctic fjord of Svalbard. *Appl Environ Microbiol* **77**: 208–218.
- Teske A, Hinrichs KU, Edgcomb V, de Vera Gomez A, Kysela D, Sylva SP *et al.* (2002). Microbial diversity of hydrothermal sediments in the Guaymas Basin: evidence for anaerobic methanotrophic communities. *Appl Environ Microbiol* **68**: 1994–2008.
- Teeling H, Fuchs BM, Becher D, Klockow C, Gardebrecht A, Bennis CM *et al.* (2012). Substrate-controlled succession of marine bacterioplankton populations induced by a phytoplankton bloom. *Science* **336**: 608–611.
- Thompson JR, Marcelino LA, Polz MF. (2002). Heteroduplexes in mixed-template amplifications: formation, consequence and elimination by ‘reconditioning PCR’. *Nucleic Acids Res* **30**: 2083–2088.
- Vetter Y, Deming J. (1999). Growth rates of marine bacterial isolates on particulate organic substrates solubilized by freely released extracellular enzymes. *Microb Ecol* **37**: 86–94.
- Walsh DA, Zaikova E, Howes CG, Song YC, Wright JJ, Tringe SG *et al.* (2009). Metagenome of a versatile chemolithoautotroph from expanding oceanic dead zones. *Science* **326**: 578–582.
- Wegner C-E, Richter-Heitmann T, Klindworth A, Klockow C, Richter M, Achstetter T *et al.* (2013). Expression of sulfatases in *Rhodopirellula baltica* and the diversity of sulfatases in the genus *Rhodopirellula*. *Mar Genomics* **9**: 51–61.
- Weiner RM, Taylor LE, Henrissat B, Hauser L, Land M, Coutinho PM *et al.* (2008). Complete genome sequence of the complex carbohydrate-degrading marine bacterium, *Saccharophagus degradans* Strain 2-40T. *PLoS Genet* **4**: e1000087.
- Weiss MS, Abele U, Weckesser J, Welte W, Schiltz E, Schulz GE. (1991). Molecular architecture and electrostatic properties of a bacterial porin. *Science* **254**: 1627–1630.
- Wietz M, Gram L, Jorgensen B, Schramm A. (2010). Latitudinal patterns in the abundance of major marine bacterioplankton groups. *Aquat Microb Ecol* **61**: 179–189.
- Worthington LV. (1982). North Atlantic circulation and water mass formation. *J Mar Res* **40**: xii–xxii.

- Worthington LV. (1976). *On the North Atlantic circulation. John Hopkins Oceanographic Studies* vol. VI. The John Hopkins University Press: Baltimore and London, p 110.
- Wright T, Vergin K, Boyd P, Giovannoni S. (1997). A novel delta-subdivision proteobacterial lineage from the lower ocean surface layer. *Appl Environ Microbiol* **63**: 1441–1448.
- Yoshinaga I, Fukami K, Ishida Y. (1991). Comparison of DNA and protein synthesis rates of bacterial assemblages between coral reef waters and pelagic waters in tropical ocean. *Mar Ecol Prog Ser* **76**: 167–174.
- Zhang R, Liu B, Lau SCK, Ki J-S, Qian P-Y. (2007). Particle-attached and free-living bacterial communities in a contrasting marine environment: Victoria Harbor, Hong Kong. *FEMS Microbiol Ecol* **61**: 496–508.
- Ziervogel K, Arnosti C. (2008). Polysaccharide hydrolysis in aggregates and free enzyme activity in aggregate-free seawater from the northeastern Gulf of Mexico. *Environ Microbiol* **10**: 289–299.
- Ziervogel K, Steen AD, Arnosti C. (2010). Changes in the spectrum and rates of extracellular enzyme activities in seawater following aggregate formation. *Biogeochemistry* **7**: 1007–1015.
- Zimmerman AE, Martiny AC, Allison SD. (2013). Microdiversity of extracellular enzyme genes among sequenced prokaryotic genomes. *ISME J* **13**: 1–13.
- Zoppini A, Puddu A, Fazi S, Rosati M, Sist P. (2005). Extracellular enzyme activity and dynamics of bacterial community in mucilaginous aggregates of the northern Adriatic Sea. *Sci Total Environ* **353**: 270–286.

Supplementary Information accompanies this paper on The ISME Journal website (<http://www.nature.com/ismej>)