

Outcomes by Sex Following Treatment Initiation With Atazanavir Plus Ritonavir or Efavirenz With Abacavir/Lamivudine or Tenofovir/Emtricitabine

Kimberly Y. Smith,¹ Camlin Tierney,² Katie Mollan,^{2,3} Charles S. Venuto,⁴ Chakra Budhathoki,⁷ Qing Ma,⁵ Gene D. Morse,⁶ Paul Sax,⁸ David Katzenstein,⁹ Catherine Godfrey,¹⁰ Margaret Fischl,¹¹ Eric S. Daar,¹² Ann C. Collier,¹³ and AIDS Clinical Trials Group 5202 Study Team

¹Department of Medicine Division of Infectious Diseases, Rush University Medical Center, Chicago, Illinois; ²Statistical Data Analysis Center, Harvard School of Public Health, Boston, Massachusetts; ³Center for AIDS Research, University of North Carolina at Chapel Hill; ⁴Center for Human Experimental Therapeutics, University of Rochester, New York; ⁵Department of Pharmacy Practice and ⁶School of Pharmacy and Pharmaceutical Sciences, University of Buffalo, State University of New York; ⁷Department of Biostatistics, Harvard School of Public Health, Boston, Massachusetts; ⁸Department of Medicine, Division of Infectious Diseases, Brigham and Women's Hospital, Harvard Medical School, Boston, Massachusetts; ⁹School of Medicine, Division of Infectious Diseases, Stanford University, California; ¹⁰Division of AIDS, National Institutes of Health, Bethesda, Maryland; ¹¹Department of Internal Medicine, University of Miami, Florida; ¹²Los Angeles Biomedical Research Institute at Harbor-UCLA Medical Center, Torrance, California; ¹³Department of Medicine, Division of Infectious Diseases, University of Washington Medical Center, Seattle

Background. We aimed to evaluate treatment responses to atazanavir plus ritonavir (ATV/r) or efavirenz (EFV) in initial antiretroviral regimens among women and men, and determine if treatment outcomes differ by sex.

Methods. We performed a randomized trial of open-label ATV/r or EFV combined with abacavir/lamivudine (ABC/3TC) or tenofovir/emtricitabine (TDF/FTC) in 1857 human immunodeficiency virus type 1–infected, treatment-naïve persons enrolled between September 2005 and November 2007 at 59 sites in the United States and Puerto Rico. Associations of sex with 3 primary study endpoints of time to virologic failure, safety, and tolerability events were analyzed using Cox proportional hazards models. Model-based population pharmacokinetic analysis was performed using nonlinear mixed effects modeling (NONMEM version VII).

Results. Of 1857 participants, 322 were women. Women assigned to ATV/r had a higher risk of virologic failure with either nucleoside reverse transcriptase inhibitor backbone than women assigned to EFV, or men assigned to ATV/r. The effects of ATV/r and EFV upon safety and tolerability risk did not differ significantly by sex. With ABC/3TC, women had a significantly higher (32%) safety risk compared to men; with TDF/FTC, the safety risk was 20% larger for women compared to men, but not statistically significant. Women had slower ATV clearance and higher predose levels of ATV compared to men. Self-reported adherence did not differ significantly by sex.

Conclusions. This is the first randomized clinical trial to identify a significantly earlier time to virologic failure in women randomized to ATV/r compared to women randomized to EFV. This finding has important clinical implications given that boosted protease inhibitors are often favored over EFV in women of childbearing potential.

Clinical Trials Registration. NCT00118898.

Keywords. sex; atazanavir; efavirenz; abacavir; tenofovir.

Received and accepted 4 November 2013; electronically published 18 November 2013.

Correspondence: Kimberly Y. Smith, MD, MPH, Division of Infectious Diseases, Rush University Medical Center, 600 S. Paulina Suite 143 acfac, Chicago, IL 60612 (kimberly_y_smith@rush.edu).

Clinical Infectious Diseases 2014;58(4):555–63

© The Author 2013. Published by Oxford University Press on behalf of the Infectious Diseases Society of America. All rights reserved. For Permissions, please e-mail: journals.permissions@oup.com.

DOI: 10.1093/cid/cit747

The Department of Health and Human Services and the International Antiviral Society–USA treatment guidelines for human immunodeficiency virus type 1 (HIV-1) indicate that the best choices for first-line therapy include either efavirenz (EFV), raltegravir, or the ritonavir-boosted protease inhibitors (PIs) atazanavir (ATV/r) or darunavir combined with fixed-dose

combination tenofovir (TDF) plus emtricitabine (FTC) [1, 2]. Women account for 27% of new HIV-1 infections in the United States [3]. With the exception of treatment during pregnancy, there is little in the published literature to suggest that the treatment of choice for treatment-naïve patients should be determined by the patient's sex [4]. A few adequately powered studies have examined association of sex with treatment outcome, with mixed results [5–7]. With women comprising a substantial proportion of HIV-1–infected persons in the United States and globally and given the importance of treatment efficacy for optimal long-term outcomes, improved understanding of responses to recommended regimens by sex is needed. This report summarizes preplanned analyses of AIDS Clinical Trials Group (ACTG) study A5202 to evaluate treatment effects on virologic failure, safety, and tolerability by sex.

METHODS

Study Design

A5202 was a phase IIIb, randomized, equivalence study of 4 regimens for initial treatment of HIV-1 conducted at 59 US and Puerto Rican ACTG sites. Eligible participants were enrolled from September 2005 to November 2007, had documented HIV-1, had undergone <8 days of previous antiretroviral therapy (ART), and were aged 16 years or older. Additional entry criteria have been published [8, 9]. The human subjects committees of all sites approved the A5202 protocol, and written informed consent was obtained from all participants in compliance with human experimentation guidelines of the US Department of Health and Human Services.

Participants were randomly assigned to 1 of 4 partially blinded once-daily regimens: open-label ATV (300 mg, Bristol-Myers Squibb, Plainsboro, New Jersey) plus ritonavir (100 mg, Abbott Laboratories, Abbott Park, Illinois) or EFV (600 mg, Bristol-Myers Squibb) with either placebo-controlled abacavir (ABC) 600 mg/lamivudine (3TC) 300 mg (GlaxoSmithKline, Research Triangle Park, North Carolina) or TDF 300 mg/FTC 200 mg (Gilead Sciences, Gilead Sciences, Foster City, California). Randomization was stratified by screening HIV-1 RNA level (<100 000 or \geq 100 000 copies/mL). Further study details have been published previously [8–10].

Primary efficacy, safety, and tolerability endpoints were time to (1) virologic failure (VF; confirmed HIV-1 RNA \geq 1000 copies/mL at or after 16 weeks and before 24 weeks or \geq 200 copies/mL at or after 24 weeks); (2) first grade 3 or 4 sign, symptom, or laboratory abnormality that was at least 1 grade higher than baseline, excluding unconjugated hyperbilirubinemia and creatine kinase; and (3) for the current analyses, change in assigned antiretroviral third agent, ignoring changes to nucleoside reverse transcriptase inhibitors (NRTIs).

ATV Pharmacokinetic Substudy

A sparse sampling strategy approach was designed for measuring steady-state plasma drug levels with an observed dose at 1 or 2 clinic visits during week 4, 8, 16, or 24. Samples were collected before the observed dose and 3–4 hours after the dose. A third blood sample was collected 5–15 hours after a dose. Atazanavir concentrations were measured using a previously reported and validated reverse-phase high-performance liquid chromatography method at the University at Buffalo, ACTG Pharmacology Specialty Laboratory [11].

Statistical Analysis

ACTG A5202 included a preplanned secondary objective to evaluate VF, safety, and tolerability by sex; however, the study was not specifically powered for this objective. A detailed description of the statistical analysis performed to assess the primary efficacy, safety, and tolerability endpoints has been published [8–10]. In brief, overall, ATV/r and EFV demonstrated similar antiviral activity when used with ABC/3TC or with TDF/FTC [9]. After interim review by an independent data safety and monitoring board showed a higher VF rate in subjects with screening HIV-1 RNA \geq 100 000 copies/mL assigned to ABC/3TC compared to TDF/FTC (hazard ratio [HR] overall, 2.33 [95% confidence interval {CI}, 1.46–3.72]), these groups were unblinded to their NRTIs [8]. Secondary analyses found that this effect differed by sex, and was larger among men (HR, 3.00 [95% CI, 1.74–5.17]) than women (HR, 0.85 [95% CI, .30–2.39]) with treatment \times sex interaction $P = .04$ [8]. Subjects with screening HIV-1 RNA <100 000 copies/mL continued to be followed on blinded treatment through study's end and had similar rates of VF in the NRTI groups [10]. Given these results, current analyses focus on the third drug (non-NRTI) comparison of ATV/r vs EFV, and these were carried out within each NRTI arm.

Analyses of VF were intent-to-treat, including all study HIV-1 RNA values starting at randomization; safety data were analyzed as-treated while on initially assigned third drug. Statistical significance level for treatment effect modification/interaction test was a priori set at 0.10. Time-to-event survival distributions were estimated by Kaplan-Meier method, and HRs were estimated with Cox proportional hazards models stratified by screening HIV-1 RNA level. Multivariable analyses were adjusted for baseline age, race/ethnicity (white, black, Hispanic; other racial groups were excluded due to small sample sizes), CD4⁺ lymphocyte count, plasma HIV-1 RNA, history of AIDS, chronic hepatitis B infection and hepatitis C, injection drug use history, and whether screening HIV-1 genotype was performed. Sensitivity analyses for VF included as-treated analyses. Adherence was categorized as 100% vs <100% based upon self-report over the preceding 7 days from each visit at weeks 8 and 24 and every 24 weeks thereafter. In post hoc analysis, association between sex and repeated

measurements of 100% vs <100% adherence at weeks 8, 24, 48, 72, and 96 was evaluated with a generalized estimating equation model with a logit link and compound symmetry covariance structure, adjusted for third drug.

Model-based population pharmacokinetic analysis was performed using nonlinear mixed effects modeling (NONMEM version VII). Individual ATV apparent oral clearance (CL/F) values were derived using Bayesian estimation from a 1-compartment population pharmacokinetic structural model. A separate model-independent analysis included ATV concentration data from subjects with assay results between 22 and 25 hours postdose (C_{24h}). Each subject's ATV plasma concentration vs postdose time profile was reviewed for inconsistencies. Excluded were those without an ATV concentration between 22 and 25 hours postdose, those with only 1 evaluable ATV concentration, or those with obvious inconsistencies between concentration time points based on the known pharmacokinetic profile of ATV/r. If a subject had >1 evaluable trough concentration, results were averaged. The pharmacokinetic concentration data were natural log-transformed before statistical analysis.

RESULTS

Participant Characteristics

Table 1 compares baseline characteristics of male and female participants. Women were more likely to have reported black race, lower creatinine clearance (CrCl), and lower baseline

HIV RNA, and less likely to have undergone genotyping at screening.

Primary Endpoint Analyses

In Figure 1, time-to-event distributions are illustrated for men and women for efficacy (Figure 1A), safety (Figure 1B), and tolerability (Figure 1C) endpoints. Figure 2 shows the results for efficacy, safety, and tolerability from Cox proportional hazards models by assigned treatment arm and sex. As-treated analyses showed similar results (data not shown).

Efficacy

With ABC/3TC

As shown in Figure 2A, overall ATV/r and EFV had similar virologic efficacy (HR, 1.13 [95% CI, .82–1.56]), [9] but there was a significant treatment effect interaction by sex ($P = .017$). VF risk was higher among women randomized to ATV/r than to EFV, with incidence rates (IRs) per 100 person-years of 12.42 vs 4.86, respectively, and an HR of 2.55 (95% CI, 1.20–5.41). There was no significant difference in VF risk for men assigned to ATV/r vs EFV, with IRs of 7.41 and 7.77 per 100 person-years, respectively, and an HR of 0.94 (95% CI, .66–1.34); adjusted model showed similar results (interaction $P = .006$; Figure 2A).

Comparing women to men, women randomized to ATV/r had higher VF hazard in multivariable models, with an HR of 1.72 (95% CI, .99–2.99; Figure 2B). Among those randomized to EFV, there was no significant evidence of increased VF risk in women vs men (Figure 2B).

Table 1. Baseline Characteristics by Sex

Characteristic	Men (n = 1535)	Women (n = 322)	Total (n = 1857)	PValue**
Age, y, mean (SD)	38.1 (10.0)	39.5 (10.2)	38.4 (10.1)	.043
>40 y, No. (%)	673 (44)	155 (48)	828 (45)	. . .
Race/ethnicity, No. (%)				<.001
White, non-Hispanic	689 (45)	57 (18)	746 (40)	
Black, non-Hispanic	443 (29)	172 (53)	615 (33)	
Hispanic ^a	347 (23)	82 (25)	429 (23)	
Other ^b	51 (3)	11 (3)	62 (3)	
HIV-1 RNA log ₁₀ copies/mL, mean (SD)	4.7 (0.7)	4.6 (0.7)	4.7 (0.7)	<.001
Screening HIV-1 RNA ≥100 000 copies/mL, No. (%)	676 (44)	121 (38)	797 (43)	.033
CD4 ⁺ cells/μL, mean (SD)	236 (170)	219 (148)	233 (167)	.256
CD4 ⁺ <50 cells/μL, No. (%)	278 (18)	61 (19)	339 (18)	.104
Genotype results available at entry, No. (%) ^c	706 (46)	124 (39)	830 (45)	.009
History of AIDS, No. (%)	250 (16)	62 (19)	312 (17)	.195
Creatinine clearance <90 mL/min, No. (%)	240 (16)	74 (23)	314 (17)	.002

Abbreviations: HIV, human immunodeficiency virus; SD, standard deviation.

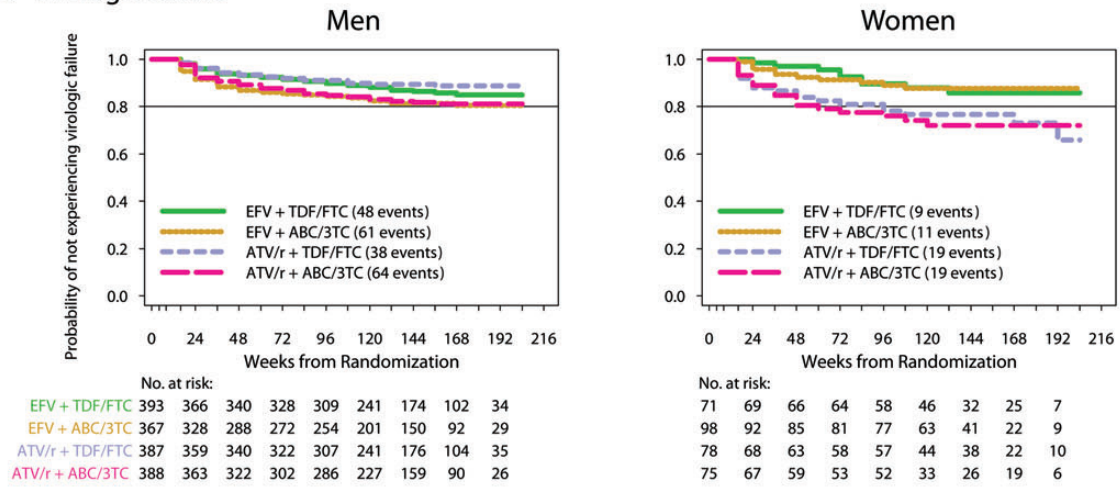
^a Regardless of race.

^b Asian, Pacific Islander, Native American, or >1 race; excluded from analysis.

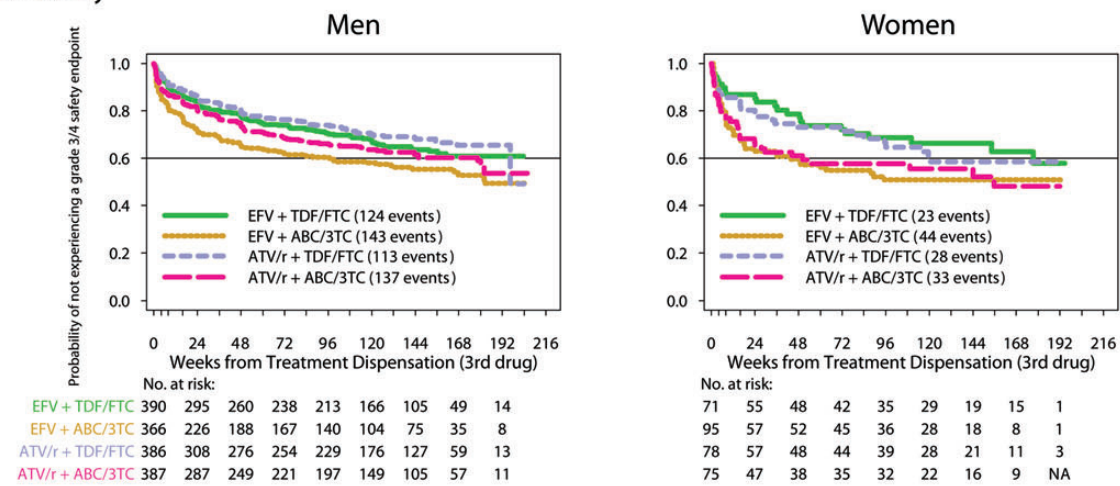
^c Genotype was not required at screening, unless recently infected; creatinine clearance calculated based on Cockcroft-Gault equation.

** P value based on Wilcoxon and χ^2 test for continuous and categorical variables, respectively.

A Virologic Failure



B Safety



C Tolerability

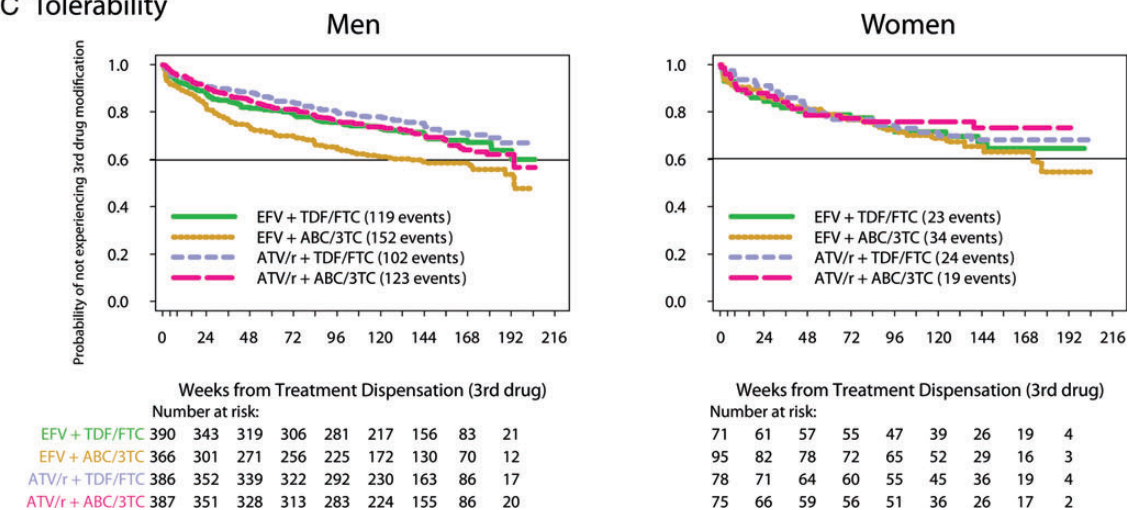


Figure 1. Time to virologic failure (A), safety (B), and tolerability (C) endpoints by sex. Abbreviations: ABC/3TC, abacavir/lamivudine; ATV/r, atazanavir/ritonavir; EFV, efavirenz; TDF/FTC, tenofovir/emtricitabine.

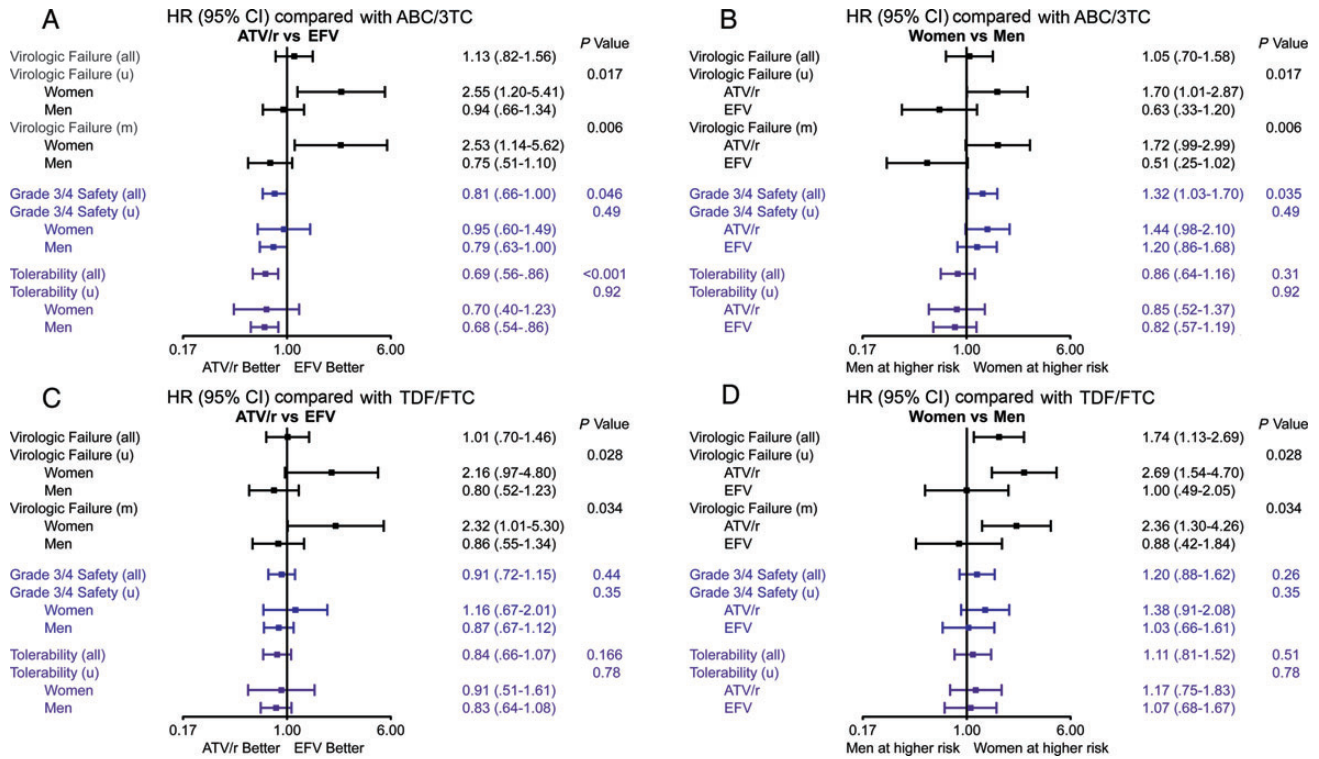


Figure 2. Treatment and sex comparisons for virologic failure, safety, and tolerability endpoints. *A*, Subjects on abacavir and lamivudine (ABC/3TC), comparing atazanavir (ATV) vs efavirenz (EFV). *B*, Subjects on ABC/3TC, comparing women vs men. *C*, Subjects on tenofovir and emtricitabine (TDF/FTC), comparing ATV vs EFV. *D*, Subjects on TDF/FTC, comparing women vs men. Univariate analysis (u) stratified by screening human immunodeficiency virus type 1 (HIV-1) RNA, and based on all available data for the covariate. Multivariable (m) analyses were adjusted for race/ethnicity (white, black, Hispanic), intravenous drug use, HIV-1 drug resistance genotype screening, age quartiles, CD4 cell count (4 categories), HIV-1 RNA level (4 categories), history of AIDS-defining event, and hepatitis B or C. Multivariable analysis excluded participants of “other” race/ethnicity due to small numbers. *P* value: likelihood ratio test, for main effect in “overall” results, and interaction tests otherwise. All models are stratified by screening HIV-1 RNA group (<100 000 or ≥100 000 copies/mL); univariate and multivariable adjusted estimates are based on interaction model; treatment effects by sex and sex associations by treatment are derived from the same model. Abbreviations: ABC/3TC, abacavir; lamivudine; ATV/r, atazanavir/ritonavir; CI, confidence interval; EFV, efavirenz; HR, hazard ratio; TDF/FTC, tenofovir/emtricitabine.

With TDF/FTC

Whereas overall ATV/r and EFV performed similarly (HR, 1.01 [95% CI, .70–1.46]) [9], there was a significant treatment effect interaction by sex (*P* = .028). The hazard of VF was higher among women randomized to ATV/r compared to EFV (IR, 10.90 vs 5.06 per 100 person-years; HR, 2.16 [95% CI, .97–4.80]). There was no significant difference in VF hazard in men on ATV/r vs EFV (IR, 4.17 vs 5.23 per 100 person-years; HR, 0.80 [95% CI, .52–1.23]); the adjusted model showed similar results (Figure 2C).

Comparing women to men, in multivariable models, women randomized to ATV/r had a higher risk of VF (HR, 2.36 [95% CI, 1.30–4.26]; Figure 2D). There was no significant evidence for increased VF in women compared to men randomized to EFV in univariate or multivariable models.

Safety

With ABC/3TC

Overall, subjects treated with ATV/r had a longer time to a safety endpoint than those treated with EFV (HR, 0.81 [95% CI, .66–1.00]) [9], and there was no significant evidence that this effect differed by sex (*P* = .49); IRs were 31.71 vs 33.96 for women and 20.81 vs 28.51 for men (Figure 2A).

Overall, compared to men, women had a shorter time to safety endpoint (HR, 1.32 [95% CI, 1.03–1.70]; Figure 2B). However, the risk of a safety endpoint for women compared to men on ATV/r (HR, 1.44 [95% CI, .98–2.10]) or EFV (HR, 1.20 [95% CI, .86–1.68]) did not differ statistically (Figure 2B).

Women assigned to ABC/3TC with ATV/r had a slightly higher incidence of grade 3–4 gastrointestinal safety endpoint compared to men on ATV/r (13% vs 7%) and to women receiving EFV (13% vs 6%) (Table 2).

With TDF/FTC

Overall, the time to a safety endpoint was not significantly different for subjects treated with ATV/r compared with those treated with EFV (HR, 0.91 [95% CI, .72–1.15]), [9] with no evidence of a difference by sex (Figure 2C); for women and men, the IRs were 21.36 vs 18.27 and 15.31 vs 18.01, respectively. Likewise, time to safety endpoint was not significantly different between women and men (Figure 2D). Safety endpoints are summarized by type in Table 2.

Grade 3–4 gastrointestinal events occurred with similar frequency in women (4%) and men (6%) receiving ATV/r with TDF/FTC (Table 2).

Tolerability

Primary tolerability endpoints (modification of ATV/r or EFV) data for A5202 have been published elsewhere [8, 9]. In summary, time to modification was significantly longer with ATV/r than EFV when combined with ABC/3TC (Figure 2A); there was no significant difference in time to modification with ATV/r or EFV plus TDF/FTC (Figure 2C). The third drug effect did not significantly differ by sex with either NRTI (Figure 2B and 2D). Comparing women to men, with either set of NRTIs, there was no apparent difference in time to discontinuation of either third drug (Figure 2B and 2D).

The most common reason for modification of a third drug was noncompliance with study medications or visits, which was identified in 7% of women and 10% of men.

Pharmacokinetics Analyses for ATV

The population model included 2195 ATV concentration values from 815 of 926 (88%) participants who initiated ATV. Parameter estimates for ATV obtained from the structural population pharmacokinetic model were clearance equal to 7.9 L/hour (95% CI, 7.6–8.2 L/hour), volume of distribution equal to 86 L (95% CI, 78–94 L), and absorption rate constant equal to 0.46 hour⁻¹ (95% CI, .37–.56 hour⁻¹). ATV concentration trough (C_{24h}) data were available from 358 of 926 subjects (39%). ATV oral clearance and trough concentrations were different by sex, with women having a higher exposure to ATV

than men (Table 3). The average CL/F of ATV in men was 0.8 L/hour (95% CI, .3–1.3 L/hour) faster than in women. The geometric mean ratio of the ATV C_{24h} for men to women was 0.72 (95% CI, .58–.89); however, there were no significant interactions between dual NRTIs and sex ($P \geq .10$; Table 3).

Self-reported Adherence and Virologic Failure by Sex

With ABC/3TC

Reported rates of short-term 100% adherence at follow-up visits week 8 through 96 with EFV ranged from 87% to 93% in women and 89%–92% in men. Reported rates of 100% adherence in the ATV/r arm ranged from 80% to 92% in women and 87%–93% in men.

With TDF/FTC

Reported rates of 100% adherence at follow-up visits week 8 through 96 with EFV ranged from 85% to 97% in women and 92%–93% in men. Reported rates of 100% adherence with ATV/r with TDF/FTC ranged from 87% to 93% in women and 91%–92% in men.

Association With Adherence

Repeated measures analyses adjusted for third drug assignment and stratified by screening viral load showed no significant association between sex and reported adherence (100% vs <100%) over weeks 8, 24, 48, 72, and 96 with ABC/3TC (odds ratio [OR] for women vs men, 1.15 [95% CI, .83–1.60]; $P = .42$) or with TDF/FTC (OR, 1.19 [95% CI, .84–1.67]; $P = .35$), and no significant evidence that adherence differed by the third drug ($P = .63$ and $.47$ with ABC/3TC, $P = .99$ and $.92$ with TDF/FTC).

Subjects who reported <100% adherence and subjects not on ART at week 8 had increased risk of VF compared to those reporting 100% adherence: HR, 2.20 (95% CI, 1.35–3.56) and 4.85 (95% CI, 2.53–9.31), respectively, for ABC/3TC ($P \leq .0002$); HR, 2.67 (95% CI, 1.56–4.62) and 4.89 (95% CI, 2.08–11.48), respectively, for TDF/FTC ($P \leq .0004$), with no evidence that this adherence association differed by third drug ($P = .26$

Table 2. Most Common Types of Grade 3–4 Safety Endpoints by Sex (While Initially Receiving Efavirenz or Atazanavir/Ritonavir)

Category	EFV + TDF/FTC		EFV + ABC/3TC		ATV/r + TDF/FTC		ATV/r + ABC/3TC		Total	
	Men n = 390	Women n = 71	Men n = 366	Women n = 95	Men n = 386	Women n = 78	Men n = 387	Women n = 75	Men n = 1529	Women n = 319
General body	35 (9%)	11 (15%)	54 (15%)	17 (18%)	45 (12%)	14 (18%)	56 (14%)	8 (11%)	190 (12%)	50 (16%)
Hematology	8 (2%)	6 (8%)	2 (1%)	5 (5%)	11 (3%)	4 (5%)	6 (2%)	0 (0%)	27 (2%)	15 (5%)
Gastrointestinal	21 (5%)	1 (1%)	17 (5%)	6 (6%)	22 (6%)	3 (4%)	28 (7%)	10 (13%)	88 (6%)	20 (6%)
Metabolic	23 (6%)	2 (3%)	45 (12%)	10 (11%)	20 (5%)	6 (8%)	41 (11%)	8 (11%)	129 (8%)	26 (8%)
Neuropsychologic	26 (7%)	2 (3%)	22 (6%)	6 (6%)	10 (3%)	0 (0%)	8 (2%)	6 (8%)	66 (4%)	14 (4%)

Abbreviations: ABC/3TC, abacavir/lamivudine; ATV/r, atazanavir/ritonavir; EFV, efavirenz; TDF/FTC, tenofovir plus emtricitabine.

Table 3. Atazanavir Plasma Pharmacokinetics by Sex, and Nucleoside/Nucleotide Reverse Transcriptase Inhibitor Treatment Arms

Group	Model-Based ATV CL/F			Observed ATV C _{trough} (22–25 h Postdose)		
	No.	^a Mean ATV CL/F, L/h (± SD)	P Value	No.	^b Mean ATV C _{trough} , ng/mL (Range)	P Value
Overall						
Men	680	8.4 (2.4)	.004 ^c	299	562 (108–3782)	.003 ^c
Women	135	7.6 (2.8)		59	783 (638–960)	
TDF/FTC						
Men	338	8.6 (2.3)	.3 ^d	147	574 (108–3782)	.1 ^d
Women	68	8.0 (2.8)		26	670 (125–2500)	
ABC/3TC						
Men	342	8.2 (2.4)		152	550 (125–3391)	
Women	67	7.2 (2.8)		33	886 (124–4985)	

Abbreviations: ABC/3TC, abacavir/lamivudine; ATV, atazanavir; CL/F, oral clearance; C_{trough}, trough serum concentration; SD, standard deviation; TDF/FTC, tenofovir/emtricitabine.

^a Arithmetic mean.

^b Geometric mean.

^c Satterthwaite *t* test.

^d Interaction (sex nucleoside reverse transcriptase inhibitor treatment arm) *P* value.

with ABC/3TC, *P* = .98 with TDF/FTC) or by sex (*P* = .32 with ABC/3TC, *P* = .27 with TDF/FTC).

DISCUSSION

This is the first randomized clinical trial (RCT) to identify a higher risk of VF in women assigned to an ATV/r-containing regimen compared to a regimen with EFV. In addition, we found that women in the ATV/r arms had higher VF risk and slower ATV clearance than men assigned to ATV/r.

Several meta-analyses of clinical trials and cohort studies have evaluated responses to ART comparing women and men. Some studies have suggested that women have higher rates of VF due to poorer adherence and complex socioeconomic factors, whereas other studies report comparable responses [5–7].

Few RCTs have had adequate enrollment of women to provide statistical power to allow comparisons of responses to specific antiretroviral agents between and within sex groups. ACTG A5202 enrolled 1857 participants, of whom 322 (17%) were women, making this the largest US-based randomized comparison of different antiretroviral regimens in HIV-1-infected women. Furthermore, this is one of the largest clinical trials comparing responses to specific modern antiretroviral regimens between HIV-1-infected women and men.

The finding of higher VF rates among women on ATV/r compared to EFV was unexpected. Previous clinical trials that compared virological responses with EFV-based regimens to PI-based regimens have had variable results by sex. For example, ACTG 384 randomized 980 persons to zidovudine plus 3TC, or stavudine plus didanosine, each combined with EFV, nelfinavir (NFV), or EFV plus NFV. Eighteen percent

(*n* = 176) of participants were women. This study found no evidence of significantly different virologic response rates by sex [12, 13].

ACTG 5142 was an open-label randomized study that compared 3 regimens for initial therapy: EFV plus 2 NRTIs; lopinavir/ritonavir (LPV/r) plus 2 NRTIs; and LPV/r plus EFV [14]. The study enrolled 757 subjects, of whom 20% (*n* = 151) were women. In a multivariable Cox proportional hazards model stratified by baseline factors, women had a greater risk of VF than men (HR, 1.38 [95% CI, 1.01–1.89]) [14]. However, no significant differences were found in time to VF when comparing EFV to LPV/r in women [15].

We hypothesized that the higher VF rate in A5202 was related to lower adherence or tolerability of ATV/r in women. However, we found no evidence suggesting lower adherence in women on ATV/r compared to women on EFV or compared to men on ATV/r based upon a validated self-report questionnaire [16]. However, the adherence measure used has limitations as it is based upon self-report and was limited to the week preceding its completion.

We did not find a significant difference in safety or tolerability endpoints comparing ATV/r to EFV between men and women. There was trend evidence of higher frequency of grade 3–4 gastrointestinal events among women compared to men on ATV/r with ABC/3TC (Table 2), yet this pattern was not seen with TDF/FTC. Of note, not all grade 1 and 2 adverse events were collected in this study, so we cannot assess their contribution to adherence or virologic outcomes. Previous studies have demonstrated higher rates of gastrointestinal side effects in women than in men on ritonavir-boosted PIs. For example, in the Abbott study M98-863 (that compared LPV/r vs NFV, each

with 2 NRTIs), women had similar response rates to men, but rates of nausea and dyspepsia were higher in women [17].

Although the cause of higher VF rates among women on ATV/r in our study is uncertain, our pharmacokinetic study findings that women had slower ATV clearance and higher mean before-dose ATV concentration suggests a hypothesis that higher ATV levels may lead to higher rates of low-level (unmeasured) toxicity that could affect outcomes. An exploratory analysis of A5202 pharmacokinetics trended in the direction of a greater risk of safety endpoint among subjects with slower ATV clearance, but this association did not reach statistical significance [18].

It is notable that in A5202 a greater proportion of women reported black race compared to men. It is possible that pharmacogenetic differences between racial groups could contribute to drug metabolism differences attributed to differences by sex. If this were the case, one would expect this difference to be demonstrated most significantly among the EFV-treated participants, as a higher prevalence of slow EFV clearance has been described among blacks and Hispanics than whites [19]. However, we did not see differences in virologic outcomes or safety endpoints comparing women on EFV to men on EFV in our study. Pharmacokinetic differences in ATV/r metabolism among racial groups are less well described. In our pharmacokinetic substudy, there was evidence that ATV/r clearance was associated with VF and this association differed by sex and race; however, there was no significant evidence that the differential association of ATV/r clearance with VF by sex differed by race/ethnicity [18].

The results of this study offer new insight into potentially important sex-based differences in treatment outcomes with modern regimens for HIV treatment-naïve patients. This is the first RCT to identify a significantly greater risk of VF among women treated with ATV/r vs EFV in combination with ABC/3TC or TDF/FTC. These findings may have important clinical implications given that ritonavir-boosted PIs are often favored over EFV for women of childbearing potential. Moreover, ATV/r is currently a preferred treatment for pregnant women, and although EFV is listed under pregnancy risk category D, the recent perinatal guidelines have been modified to allow women who become pregnant while taking EFV to remain on this agent as the greatest teratogenicity risk appears to be in the early first trimester. EFV is also now recommended as a treatment option for pregnant women who initiate ART after the first trimester [20]. The findings of the current study should warrant additional investigation of antiretroviral regimens in RCTs and cohorts with large enrollment of women.

Notes

Acknowledgments. We would like to thank all the investigators, study coordinators, and study participants of ACTG A5202. We also thank Abbott Laboratories, Bristol-Myers Squibb, Gilead Inc, and GlaxoSmith Kline for providing antiretroviral agents used in this trial.

Other investigators and contributors included the following: Hector H. Bolivar, MD, and Sandra Navarro, MD, University of Miami (Site 901) CTU Grant #AI069477, ACTG Grant #AI27675, CFAR Grant #AI073961; Susan L. Koletar, MD, and Diane Gochmour, RN, The Ohio State University (Site 2301) CTU Grant #AI069474; Edward Seefried, RN, and Julie Hoffman, RN, UCSD (Site 701) CTU Grant #AI69432; Judith Feinberg, MD, and Michelle Saemann, RN, University of Cincinnati (Site 2401) CTU Grant #AI069513; Kristine Patterson, MD, Donna Pittard, RN, and David Currin, RN, University of North Carolina (Site 3201) CTU Grant #AI69423, CFAR Grant #AI50410, GCRC Grant #RR00046, and Grant #RR025747; Kerry Upton, RN, BSN, and Michael Saag, MD, University of Alabama (Site 5801) CTU Grant #U01 AI069452, CCTS Grant #1UL1 RR025777-01; Graham Ray and Steven Johnson, University of Colorado Health Sciences Center (Site 6101) CTU Grant #AI69450, Grant #AI054907, Grant #RR00051; Bartolo Santos, RN, and Connie A. Funk, RN, MPH, University of Southern California (Site 1201) CTU Grant #5U01 AI069428; Michael Morgan, FNP, and Brenda Jackson, RN, Vanderbilt Therapeutics CRS (Site 3652) CTU Grant #AI069439; Pablo Tebas, MD, and Aleshia Thomas, RN, University of PA, subunit of Children's Hospital of Philadelphia (Site 6201) CTU Grant #U01 AI069467-03, CFAR Grant #5P30 AI045008-10; Ge-Youl Kim, RN, BSN, and Michael K. Klebert, PhD, RN, ANP-BC, Washington University (Site 2101) CTU Grant #AI069495; Jorge L. Santana and Santiago Marrero, University of Puerto Rico (Site 5401) CTU Grant #5U01 AI069415-03; Jane Norris, PA-C, and Sandra Valle, PA-C, Stanford University (Site 501) CTU Grant #AI69556; Gary Matthew Cox, MD, and Martha Silberman, RN, Duke University Medical Center (Site 1601) CTU Grant #5U01 AI069484-02; Sadia Shaik and Ruben Lopez, Harbor-UCLA Medical Center (Site 603) CTU Grant #AI069424; Margie Vasquez, RN, and Demetre Daskalakis, MD, New York University/ NYC HHC at Bellevue Hospital Center (Site 401) CTU Grant #AI069532; Christina Megill, RPA-C, and Todd Stroberg, RN, Cornell Chelsea (Site 7804) CTU Grant #AI69419, CSTC Grant #RR024996; Jessica Shore, BSN, and Babafemi Taiwo, MBBS, Northwestern University CRS (Site 2701) CTU Grant #AI069471; Mitchell Goldman, MD, and Molly Boston, RN, Indiana University (Site 2601) CTU Grant #U01 AI025859; Dr Jeffrey Lennox and Dr Carlos del Rio, The Ponce de Leon Center (A5802) CTU Grant #5U01 AI069418, CFAR Grant #P30 AI050409; Timothy W. Lane, MD, and Kim Epperson, RN, Moses H. Cone Memorial Hospital (Site 3203) CTU Grant #1U01 AI069423-01; Annie Luetkemeyer, MD, and Mary Payne, RN, UCSF (Site 801) CTU Grant #1U01 AI069502-01; Barbara Gripshover, MD and Dawn Antosh, RN, Case Western Reserve University (Site 2501) CTU Grant #AI69501; Jane Reid RN, MS, APN-BC, and Mary Adams, RN, MPH, University of Rochester (Site 1101) CTU Grant #U01 AI069511, GCRC Grant #UL1 RR024160; Sheryl S. Storey, PA-C, Shelia B. Dunaway, MD- University of Washington (Site 1401) CTU Grant #AI069434; Joel Gallant, MD, and Ilene Wiggins, RN, Johns Hopkins University (Site 201) CTU Grant #AI69465; Kimberly Y. Smith, MD, MPH, and Joan A. Swiatek, RN, APN, Rush University Medical Center (Site 2702) CTU Grant #5U01 AI069471; Joseph Timpone, MD, and Princy Kumar, MD, Georgetown University (Site 1008) CTU Grant #1U01 AI069494-01; Ardis Moe, MD, Maria Palmer PA-C, UCLA Care Center (Site 601) CTU Grant #AI069424; Jon Gothing, RN, BSN, ACRN, and Joanne Delaney, RN, BSN, Brigham and Women's Hospital Boston MA (Site 107) CTU Grant #AI069472; Kim Whitely, RN, and Ann Marie Anderson, RN, Metro Health Center (Site 2503) CTU Grant #AI069501; Scott M. Hammer and Michael T. Yin, HIV Prevention & Treatment (Columbia University) (Site 30329) CTU Grant #5U01 AI069470, Grant #1UL1 RR024156; Mamta Jain, MD, and Tianna Petersen, MSUT Southwestern Medical Center at Dallas (Site 3751) CTU Grant #3U01 AI046376 05S4; Roberto Corales, DO, and Christine Hurley, RN, AIDS Community Health Center (Site 1108) CTU Grant #U01 AI069511, GCRC Grant #UL1 RR024160; Keith Henry, MD, and Bette Bordenave, RN, Hennepin County Medical Center (Site 1502) Grant #N01 AI72626; Amanda Youmans, NP, and Mary Albrecht, MD, Beth Israel Deaconess (Partners/Harvard) CRS (Site 103) CTU Grant #U01 AI06947203; Richard B. Pollard, MD, and Abimbola Olusanya, NP, University of California, Davis Medical Center (Site 3851) Grant #AI38858;

Paul R. Skolnik, MD, and Betsy Adams, RN, Boston Medical Center CRS (Site 104) CTU Grant #AI069472; Karen T. Tashima and Helen Patterson, The Miriam Hospital–Brown University (Partners/Harvard) (Site 2951) CTU Grant #1U01 AI069472-01; Michelle Ukwu and Lauren Rogers, Peabody Health Center (Site 31443) CTU Grant #AI069471; Henry H. Balfour Jr, MD, and Kathy A. Fox, RN, MBA, University of Minnesota (Site 1501) CTU Grant #AI27661; Susan Swindells, MBBS, and Frances Van Meter, APRN, University of Nebraska Medical Center (Site 1505) CTU Grant #AI27661; University of Hawaii (Site 5201) CTU Grant #AI34853; Gregory Robbins, MD, and Nicole Burgett-Yandow, RN, BSN, Massachusetts General Hospital from the Partners/Harvard/BMC ACTU (Site 101) CTU Grant #1U01 AI069472-01; Dr Charles E. Davis Jr and Colleen Boyce, RN, IHV Baltimore Treatment CRS (Site 4651) CTU Grant #5U01 AI069447 03; William A. O'Brien, MD, and Gerianne Casey, University of Texas Medical Branch (Site 6301) CTU Grant #AI032782; Dr Gene D. Morse, PharmD, and Dr Chiu-Bin Hsaio, MD, SUNY-Buffalo (Site 1102) CTU Grant #5U01 AI027658; San Mateo County AIDS Program (Site 505) CTU Grant #AI27666; Jeffrey L. Meier and Jack T. Stapleton, University of Iowa Healthcare (Site 1504) NIAID Grant #AI27661 and Grant #AI58740; Donna Mildvan, MD, and Manuel Revuelta, MD, Beth Israel Medical Center ACTU (Site 2851) CTU Grant #AI46370; David Currin, RN, Wake County HHS (Site 30076) CTU Grant #AI25868; Wafaa El Sadr, MD, MPH, MPA, and Avelino Loquere, RN, Harlem ACTG CRS (Site 31483) CTU Grant #5U01 AI069470-03; Nyef El-Daher, MD, and Tina Johnson, RN, McCree McCuller Wellness Center (Site 1107) CTU Grant #U01 AI069511, GCRC Grant #UL1 RR024160; Robert Gross MD, MSCE, and Kathryn Maffei, RN, BSN, University of Pennsylvania Health (Site 6206) CTU Grant #1U01 AI69467-01; Valery Hughes, FNP, and Glenn Sturge, BS, Cornell Uptown (Site 7803) CTU Grant #1U01 AI069419-01; Deborah McMahon, MD, and Barbara Rutecki, CRNP, MPH, University of Pittsburgh (Site 1001) CTU Grant #1U01 AI069494-01; Michael Wulfsohn, MD, PhD, Andrew Cheng, MD, PhD, Norbert Bischofberger PhD, Gilead Sciences; Lynn Dix, PhD, and Qiming Liao, PhD, GlaxoSmithKline, Inc.

Financial support. This work was supported by grants AI38858, to the ACTG Central Group; AI68636, to the ACTG Network; AI68634 and AI38855, to the ACTG Statistical and Data Analysis Center; and AI069434 from the National Institute of Allergy and Infectious Diseases, National Institutes of Health, with additional support from the General Clinical Research Center units funded by the National Center for Research Resources and University of North Carolina at Chapel Hill Center for AIDS Research (P30 AI50410).

Potential conflicts of interest. K. Y. S. is a consultant/advisor for Abbott, Bristol-Myers Squibb, Gilead, GlaxoSmithKline, Janssen, Merck, and ViiV. C. T. is a member of a Data Monitoring Committee for a Tibotec hepatitis drug. K. M. collaborates on a Gilead study with salary support provided to UNC Chapel Hill. E. S. D. is a consultant/advisor for Abbvie, Bristol-Myers Squibb, Gilead, Janssen, Merck, Teva, and ViiV and receives research support from Abbott, Gilead, Merck, Pfizer, and ViiV. A. C. C. has research support from Merck & Co and past research support from Boehringer-Ingelheim, Gilead Sciences, Schering-Plough, and Tibotec-Virco; is a former member of a Data Monitoring Committee for a Merck-sponsored study; and she or a family member previously owned stock in Abbott Laboratories, Bristol-Myers Squibb, Johnson & Johnson, and Pfizer. All other authors report no potential conflicts.

All authors have submitted the ICMJE Form for Disclosure of Potential Conflicts of Interest. Conflicts that the editors consider relevant to the content of the manuscript have been disclosed.

References

- Panel on Antiretroviral Guidelines for Adults and Adolescents. Guidelines for the use of antiretroviral agents in HIV-1-infected adults and adolescents. **2013**; 1-240. Available at: <http://aidsinfo.nih.gov/contentfiles/lvguidelines/AdultandAdolescent/0>. Accessed 17 June 2013.
- Thompson MA, Aberg JA, Hoy JF, et al. Antiretroviral treatment of adult HIV infection: 2012 recommendations of the International Antiviral Society–USA Panel. *JAMA* **2012**; 308:387–402.
- Centers for Disease Control. HIV surveillance report: diagnoses of HIV infection and AIDS in the United States and dependent areas. **2009**.
- Department of Health and Human Services. Recommendations for use of antiretroviral drugs in pregnant HIV-1-infected women for maternal health and interventions to reduce perinatal HIV transmission in the United States. Available at: <http://www.aidsinfo.nih.gov/Guidelines/GuidelineDetail.aspx?GuidelineID=9&ClassID=2>. Accessed 17 June 2013.
- Moore AL, Kirk O, Johnson AM, et al. Virologic, immunologic, and clinical response to highly active antiretroviral therapy: the gender issue revisited. *J Acquir Immune Defic Syndr* **2003**; 32:452–61.
- Bosch RJ, Bennett K, Collier AC, et al. Pre-treatment factors associated with 3-year (144-week) virologic and immunologic responses to potent antiretroviral therapy. *J Acquir Immune Defic Syndr* **2007**; 44:268–77.
- Soon G, Min M, Struble KA, et al. Meta-analysis of gender differences in efficacy outcomes for HIV-positive subjects in randomized controlled clinical trials of antiretroviral therapy (2000–2008). *AIDS Patient Care STDS* **2012**; 26.
- Sax PE, Tierney C, Collier AC, et al. Abacavir-lamivudine versus tenofovir-emtricitabine for initial HIV-1 therapy. *N Engl J Med* **2009**; 361:2230–40.
- Daar E, Tierney C, Fischl M, et al. Atazanavir plus ritonavir or efavirenz as part of a 3-drug regimen for initial treatment of HIV type-1. *Ann Intern Med* **2011**; 154:445–56.
- Sax PE, Tierney C, Collier AC, et al. Abacavir/lamivudine versus tenofovir DF/emtricitabine as part of combination regimens for initial treatment of HIV: final results. *J Infect Dis* **2011**; 204:1191–201.
- Keil K, Hochreiter J, DiFrancesco R, et al. Integration of atazanavir into an existing liquid chromatography UV method for protease inhibitors: validation and application. *Ther Drug Monit* **2007**; 29: 103–9.
- Gandhi RT, Spritzler J, Chan E, et al. Effect of baseline- and treatment-related factors on immunologic recovery after initiation of antiretroviral therapy in HIV-1-positive subjects: results from ACTG 384. *J Acquir Immune Defic Syndr* **2006**; 42:426–34.
- Robbins GK, De Gruttola V, Shafer RW, et al. Comparison of sequential three-drug regimens as initial therapy for HIV-1 infection. *N Engl J Med* **2003**; 349:2293–303.
- Riddler SA, Haubrich R, DiRienzo AG, et al. Class-sparing regimens for initial treatment of HIV-1 infection. *N Engl J Med* **2008**; 358:2095–106.
- Riddler SA, Haubrich R, DiRienzo G, et al. Effect of baseline characteristics on treatment outcomes in ACTG 5142: a prospective, randomized, phase III trial of NRTI-, PI-, and NNRTI-sparing regimens for initial treatment of HIV-1 infection. In: 15th Conference on Retroviruses and Opportunistic Infections, Boston, MA, 3–6 February 2008. Abstract 776.
- Chesney MA, Ickovics JR, Chambers DB, et al. Self-reported adherence to antiretroviral medications among participants in HIV clinical trials: the AACTG Adherence Instruments. *AIDS Care* **2000**; 12:255–66.
- Cernohous P, Bernstein B, Mosley J, et al. Safety and efficacy of lopinavir/ritonavir in women in a phase III study of antiretroviral-naïve subjects. In: 14th IAC, Barcelona, Spain, **2002**. Abstract WePeB5972.
- Venuto C, Mollan K, Ma Q, et al. Atazanavir pharmacokinetics and efficacy and safety outcomes by sex in AIDS Clinical Trials Group Study 5202 (A5202). In: 19th International AIDS Conference, Washington, DC, 22–27 July 2012. Abstract TUPDB0101.
- Schackman BR, Ribaud HJ, Krambrink A, et al. Racial differences in virologic failure associated with adherence and quality of life on efavirenz-containing regimens for initial HIV therapy: results of ACTG A5095. *J Acquir Immune Defic Syndr* **2007**; 46:547–54.
- Panel on Treatment of HIV-Infected Pregnant Women and Prevention of Perinatal Transmission. Recommendations for use of antiretroviral drugs in pregnant HIV-1-infected women for maternal health and interventions to reduce perinatal HIV transmission in the United States. Available at: <http://aidsinfo.nih.gov/contentfiles/lvguidelines/PerinatalGL.pdf>. Accessed 16 September 2013.