

# The receptor binding domain of the viral spike protein is an immunodominant and highly specific target of antibodies in SARS-CoV-2 patients

Lakshmanane Premkumar<sup>1\*</sup>, Bruno Segovia-Chumbez<sup>1</sup>, Ramesh Jadi<sup>1</sup>, David R. Martinez<sup>2</sup>, Rajendra Raut<sup>1</sup>, Alena Markmann<sup>3</sup>, Caleb Cornaby<sup>5</sup>, Luther Bartelt<sup>3</sup>, Susan Weiss<sup>3</sup>, Yara Park<sup>3</sup>, Caitlin E. Edwards<sup>2</sup>, Eric Weimer<sup>4</sup>, Erin M. Scherer<sup>8</sup>, Nadine Rouphael<sup>8</sup>, Srilatha Edupuganti<sup>8</sup>, Daniela Weiskopf<sup>6</sup>, Longping V. Tse<sup>2</sup>, Yixuan J. Hou<sup>2</sup>, David Margolis<sup>1,2,3</sup>, Alessandro Sette<sup>6,7</sup>, Matthew H. Collins<sup>8</sup>, John Schmitz<sup>4</sup>, Ralph S. Baric<sup>1,2</sup>, Aravinda M. de Silva<sup>1\*</sup>

<sup>1</sup>Department of Microbiology and Immunology, University of North Carolina School of Medicine, Chapel Hill NC 27599, USA. <sup>2</sup>Department of Epidemiology, UNC Chapel Hill School of Public Health, University of North Carolina at Chapel Hill, Chapel Hill, North Carolina, USA. <sup>3</sup>Departments of Medicine, University of North Carolina School of Medicine, Chapel Hill NC 27599, USA. <sup>4</sup>Department of Pathology & Laboratory Medicine, University of North Carolina School of Medicine, Chapel Hill NC 27599, USA.

<sup>5</sup>Immunology/Histocompatibility and Immunogenetics Laboratories, University of North Carolina School of Medicine, Chapel Hill NC 27599, USA. <sup>6</sup>Center for Infectious Disease and Vaccine Research, La Jolla Institute for Immunology (LJI), La Jolla, CA 92037, USA. <sup>7</sup>Department of Medicine, Division of Infectious Diseases and Global Public Health, University of California, San Diego (UCSD), La Jolla, CA 92037, USA. <sup>8</sup>Hope Clinic of the Emory Vaccine Center, Division of Infectious Diseases, Department of Medicine, School of Medicine, Emory University, Decatur, Georgia, USA.

\*Corresponding author. Email: Lakshmanane Premkumar ([prem@med.unc.edu](mailto:prem@med.unc.edu)) or Aravinda M. de Silva ([aravinda\\_desilva@med.unc.edu](mailto:aravinda_desilva@med.unc.edu))

The severe acute respiratory syndrome coronavirus 2 (SARS-CoV-2) that first emerged in late 2019 is responsible for a pandemic of severe respiratory illness. People infected with this highly contagious virus can present with clinically inapparent, mild, or severe disease. Currently, the virus infection in individuals and at the population level is being monitored by PCR testing of symptomatic patients for the presence of viral RNA. There is an urgent need for SARS-CoV-2 serologic tests to identify all infected individuals, irrespective of clinical symptoms, to conduct surveillance and implement strategies to contain spread. As the receptor binding domain (RBD) of the spike protein is poorly conserved between SARS-CoVs and other pathogenic human coronaviruses, the RBD represents a promising antigen for detecting CoV-specific antibodies in people. Here we use a large panel of human sera (63 SARS-CoV-2 patients and 71 control subjects) and hyperimmune sera from animals exposed to zoonotic CoVs to evaluate RBD's performance as an antigen for reliable detection of SARS-CoV-2-specific antibodies. By day 9 after the onset of symptoms, the recombinant SARS-CoV-2 RBD antigen was highly sensitive (98%) and specific (100%) for antibodies induced by SARS-CoVs. We observed a strong correlation between levels of RBD binding antibodies and SARS-CoV-2 neutralizing antibodies in patients. Our results, which reveal the early kinetics of SARS-CoV-2 antibody responses, support using the RBD antigen in serological diagnostic assays and RBD-specific antibody levels as a correlate of SARS-CoV-2 neutralizing antibodies in people.

## INTRODUCTION

The severe acute respiratory syndrome coronavirus 2 (SARS-CoV-2) is responsible for an ongoing pandemic that has already killed over 320,000 people and paralyzed the global economy (1). Currently, the main method for laboratory diagnosis of SARS-CoV-2 is PCR testing of nasopharyngeal swabs. There is an urgent need for highly specific and sensitive antibody detection assays to answer fundamental questions about the epidemiology and pathogenesis of SARS-CoV-2 and to implement and evaluate population-level control programs (2). Efforts to understand the pathogenesis and define risk factors for severe SARS-CoV-2 disease have been

hampered by our inability to identify all infected individuals, irrespective of clinical symptoms. To contain the pandemic, many countries resorted to the widespread quarantine of cities and regions. By deploying reliable antibody assays for population-level testing, it will be possible to obtain the high-resolution spatial data needed to implement policies for containing the epidemic and informing strategies for re-opening communities and cities.

Studies with SARS-CoV-2 and other human CoVs demonstrate that people rarely develop specific antibodies within the first 7 days after onset of symptoms (3–7). By 10–11 days after onset of symptoms, greater than 90% of SARS-CoV-2

patients develop specific IgG and IgM (3–6). For SARS-CoV-1 and the more distantly related MERS-CoV, IgG antibodies have been observed to persist for at least one year after infection (8, 9). These observations strongly support the feasibility of using antibody assays for identifying recent and remote SARS-CoV-2 infections and for conducting population-level surveillance.

SARS-CoV-2 is a  $\beta$ -coronavirus, a subgroup that includes the closely related SARS-CoV-1 and the more distantly related MERS-CoV and the common-cold human CoVs (HCoV-OC43 and HCoV-HKU1) (10). Many companies have quickly developed tests for SARS-CoV-2 antibody detection. These assays utilize the inactivated whole virion, viral nucleocapsid protein or viral spike protein as antigens in ELISA, lateral flow or other testing platforms. While the performance of these assays has not been fully evaluated, some assays appear quite sensitive when used 10 days or more after the onset of symptoms (6, 11). The specificity of SARS-CoV-2 antibody assays has not been adequately addressed. Humans are frequently infected with HCoV-OC43 and HCoV-HKU1 and most adults have antibodies to these viruses (10). Any antibody cross-reactivity between common HCoVs and SARS-CoV-2 would result in false-positive results interfering with antibody-based testing and surveillance for SARS-CoV-2.

SARS-CoV-1 and HCoV OC43 elicit antibodies that cross-react against related CoVs (12, 13). Following the SARS-CoV-1 outbreak in 2003, the overall specificity of serological assays utilizing the nucleocapsid protein of SARS-CoV-1 was poor, whereas assays based on the spike protein were more specific (14–16). In recent studies, the receptor binding domain (RBD) of the spike protein of SARS-CoV-2 has shown promise as an antigen for specific antibody detection (4, 17, 18). Here we report the production of properly folded recombinant receptor binding domains (RBDs) from the spike proteins of SARS and common-cold HCoVs in mammalian cells. We use these recombinant antigens and a large diverse panel of human and animal sera to evaluate the RBD as an antigen for SARS-CoV-2 serology. We demonstrate that the recombinant SARS-CoV-2 RBD antigen is highly sensitive and specific for detection of antibodies induced by SARS-CoVs. We also observed a strong correlation between the levels of RBD-binding antibodies and levels of SARS-CoV-2 neutralizing antibodies in patients. Our results support the use of RBD-based antibody assays for serology and as a correlate of neutralizing antibody levels in symptomatic people who have recovered from SARS-CoV-2 infections.

## RESULTS

### Expression and characterization of recombinant RBD antigens from pathogenic coronaviruses

The S1 and S2 subunits of the spike (S) protein of Coronaviruses are required for viral entry. The surface accessible

receptor binding domain (RBD) on the S1 subunit binds to receptors on target cells, whereas the exposure of the fusion loop in the S2 subunit induces fusion of the viral envelope to the host cellular membranes (19). The RBDs of SARS-CoVs, which bind to angiotensin-converting enzyme 2 (ACE2) receptor on the host cells, are also a major target of human antibodies (Fig. 1A and B). As the RBD is a common target of human antibodies and poorly conserved between SARS-CoVs and other pathogenic human coronaviruses (Fig. 1C), this domain is a promising candidate for use in antibody-based diagnostic assays. We expressed the RBD of 2003 and 2019 SARS-CoVs and four common human coronaviruses (HCoV-HKU-1, -OC43, -NL63 and -229E) as fusion proteins that were secreted from human cells. The recombinant RBDs were purified from the cell culture medium by affinity chromatography and purity was confirmed by SDS-PAGE (Fig. 1D). We used sera and monoclonal antibodies from animals immunized with SARS-CoV-1 or -2 spike proteins to assess the structural integrity of the purified recombinant RBD antigens. Pooled serum from mice immunized with SARS-CoV-2 spike protein had antibodies that bound well to the RBD of SARS-CoV-2 and poorly to the RBDs of SARS-CoV-1 and other common HCoVs (Fig. 1E). Sera from mice or rabbits immunized with SARS-CoV-1 or cross-reactive monoclonal antibody 240C reacted with the RBDs of SARS CoV-1 and -2 but not common human CoVs (Fig. 1E). Human serum collected before SARS-CoV-2 emerged contained antibodies to common  $\alpha$ - and  $\beta$ -HCoVs (NL63 and HKU-1) but not to SARS-CoV RBD antigens (Fig. 1E). These results suggest that the purified recombinant RBD antigens retain native structures required for specific antibody binding.

### Evaluating the specificity of SARS-CoV-2 RBD for serology

To evaluate the specificity of the recombinant SARS-CoV-2 RBD in serology, we used human sera collected from different populations before the current pandemic. The sera were tested at a high concentration (1:20 dilution) for binding to the recombinant RBDs from SARS-CoV-1, SARS-CoV-2 and common  $\alpha$ - and  $\beta$ -HCoVs (Fig. 2). Sera collected from healthy American adults (N = 20) before the SARS-CoV-2 pandemic frequently had high levels of antibodies to the recombinant RBDs of NL63 and HKU-1 CoVs but not to SARS-CoVs (Fig. 2A). We also tested archived pre-SARS-CoV-2 pandemic sera collected from individuals in South Asia, the Caribbean and Central America who had recently recovered from arbovirus infections. As in the case of healthy adults from the USA, most of the subjects from different parts of the world had high levels of antibodies to the RBD of common HCoVs but no antibodies to the RBD of SARS-CoVs (Fig. 2B). To assess if other human respiratory viruses stimulated antibodies that cross-reacted with the recombinant SARS-CoV RBD, we tested early convalescent sera from people with laboratory

confirmed influenza A and respiratory syncytial virus infections and sera from guinea pigs immunized with a panel of different human respiratory viruses (Fig. 2 C and D). Except guinea pigs immunized with SARS-CoV-1, none of the sera had detectable levels of antibodies to the recombinant RBD of SARS-CoVs.

The known pathogenic human CoVs are members of the  $\alpha$ -coronavirus and  $\beta$ -coronavirus genera (Fig. 3A). HCoV-NL63 and 229E are two  $\alpha$ -coronaviruses that frequently infect and cause a mild common-cold-like illness in most people. HCoV-OC43 and HKU-1 are two group 2A  $\beta$ -coronaviruses that also commonly infect people and cause mild disease. Most adults (>90%) have antibodies to these common-cold HCoVs. SARS-CoV-1 and -2 and MERS-CoV are group 2B and 2C zoonotic  $\beta$ -coronaviruses that have recently crossed into humans and caused severe illness. The  $\alpha$ - and  $\beta$ -coronavirus genera also contain a large number of zoonotic viruses that infect different animal hosts, which have not been implicated in human disease to date. To further assess the specificity of SARS-CoV-2 RBD for serology, we obtained and tested sera from people who had recently recovered from a laboratory-confirmed common-cold HCoV infection and sera from guinea pigs immunized with different animal CoVs (Fig. 3 B and C). None of the immune sera from people exposed to recent HCoV infections cross-reacted with the recombinant RBD of SARS-CoVs. None of the guinea pigs vaccinated with different zoonotic CoVs had antibodies that cross-reacted with the recombinant SARS-CoV RBDs (Fig. 3B and C). These results establish that most individuals, including people who have been recently exposed to acute common HCoV infections, do not have detectable levels of cross-reactive antibodies to the recombinant RBD of SARS-CoVs.

#### **Evaluating the sensitivity of SARS-CoV-2 RBD for serology**

To evaluate the sensitivity of the RBD of SARS-CoV-2 for identifying infected individuals, we obtained a total of 77 serum samples from 63 patients with laboratory-confirmed (i.e., PCR positive) SARS-CoV-2 infections collected at different times after the onset of symptoms. All the samples were tested for binding of total immunoglobulin (Ig) and IgM antibodies to recombinant RBD antigens from SARS-CoVs and common-cold HCoVs. The sensitivity of the assay was high (98% and 81% respectively for Ig and IgM) for specimens collected 9 days or more after onset of symptoms (Fig. 4A). As expected, overall sensitivity was lower (57% and 43% respectively for Ig and IgM) for specimens collected between 7 and 8 days after onset of symptoms (Fig. 4A). With samples collected 9 days or more after onset of symptoms, we observed some Ig and IgM antibody cross reactivity with the RBD of SARS-CoV-1 (67% and 30% respectively for Ig and IgM), which was anticipated as these viruses are closely related group 2B  $\beta$ -coronaviruses (20, 21). When the specimens were

further analyzed to estimate the timing of seroconversion, we observed a marked transition from seronegative to seropositive for both Ig and IgM about 9 days after the onset of symptoms (Fig. 4A and B). By day 9 after onset of symptoms, most patients had high end-point titers in the RBD Ig ELISA (Fig. S1). To analyze the kinetics of all three of the major isotypes of serum antibodies within the first 6 weeks after the onset of symptoms, we separately measured IgG, IgA, and IgM in 49 serum samples obtained from SARS-CoV-2 infected patients at >9 days after onset of symptoms. Most individuals (46/49) developed IgG responses (Fig. 4C). IgA and IgM responses were observed less frequently (IgA = 38/49, IgM = 34/49) than IgG (Fig. 4C). For 14 individuals with laboratory-confirmed SARS-CoV-2 infection, we had two specimens collected at different times early in the infection (Fig. 4D). Two subjects (P70 and P50) were seronegative within the first 4 days and seropositive for both Ig and IgM 9 or more days after onset (Fig. 4D). For three subjects (P58, P56, P52) the acute samples were collected after 9 days and the convalescent samples were collected 21 days or more after onset. In these individuals both acute and convalescent samples were positive, and we observed an increase in Ig and IgM levels in the second specimen. For the remaining 9 subjects, the acute specimen was collected on day 7 after onset and the convalescent specimen was collected >9 days after onset. Six out of the 9 subjects already had specific Ig, IgM or both in the acute specimen collected on day 7. All the subjects except one (P54) seroconverted or had elevated levels of antibody in the convalescent sample collected >9 days after onset of symptoms. These results indicate that most people seroconvert between days 7 and 9 after onset of symptoms. Subject P54 was an outlier and did not develop specific Ig or IgM antibodies. All the individuals with documented SARS-CoV-2 had Ig but not IgM antibodies that bound to the RBD of common HCoVs, which is consistent with their high prevalence in humans (Fig. 4A). These results demonstrate that the RBD of SARS-CoV-2 is a highly sensitive antigen for antibody detection in patients 9 days or more after onset of symptoms.

#### **Antibodies to the RBD of SARS-CoV-2 as a correlate of neutralizing antibody response**

The administration of convalescent plasma containing antibodies to SARS-CoV-2 is being evaluated for patients with severe disease. While the FDA has not approved convalescent plasma therapy, on May 1, 2020, the FDA recommended that SARS-CoV-2 neutralizing titers of at least 1:160 should be used for human passive immunization studies. Further, the FDA also recommended that a titer of 1:80 may be acceptable if an alternative matched unit is not available. As the RBD domain of S protein is critical for viral entry, antibodies targeting this domain of SARS-CoV-2 are likely to be neutralizing and potentially protective, as is seen in cell culture and animal models for other pathogenic CoVs (19, 22). To assess

the relationship between the RBD-binding activity and the neutralizing antibody response, we tested 50 PCR-confirmed SARS-CoV-2 patient immune sera in a SARS-CoV-2 luciferase neutralization assay (Fig. 5). As judged by the Spearman test ( $\rho = 0.86$ ,  $P < 0.0001$ ), we observed that the magnitude of the total RBD-binding Ig antibody strongly correlated with the levels of neutralizing antibodies in SARS-CoV-2 patients (Fig. 5A). Moreover, the patient samples with high levels of IgM antibodies were strongly associated with the highest neutralizing antibody titers in early convalescence (Spearman  $\rho = 0.83$ ,  $P < 0.0001$ ; Fig. 5B, <6 weeks after onset of symptoms). The neutralizing antibody kinetics in patients mirrored the kinetics of RBD antibody development (Fig. 5C and Fig. S2). None of the patients with confirmed SARS-CoV-2 infection (0/8) had any detectable levels of neutralizing antibodies within the first eight days after the onset of symptoms. While low levels of neutralizing antibody titers were detectable in 91% of patients (20/22) 21 days after the onset of symptoms, only 73% of patients (16/22) had a neutralization titer of at least 1:80.

Currently, patients who have had a documented SARS-CoV-2 infection identified by RT-PCR or a serologic test, and who are clear of symptoms for at least 14 days, are recruited for convalescent plasma donation. We evaluated the neutralizing potency in patient samples collected between 1 and 40 days with a titer of at least 1:160 (Fig. 5D). We observed that 32% of patients (7/22) developed weak to no neutralizing antibodies even 21 days after onset of symptoms, suggesting that days after the start of symptoms is a poor determinant of the levels of SARS-CoV-2 neutralizing antibodies in the patients included in our study, particularly within the early convalescent phase (<6 weeks). To evaluate whether a simple RBD ELISA can be used as a surrogate for neutralizing potency in SARS-CoV-2 patients, we analyzed the relationship between the level of total Ig antibody to RBD and a neutralizing antibody titer of at least 1:160. We observed that 22/24 people who had a substantial total Ig binding antibody to RBD (>1.5 OD) also developed a robust neutralizing antibody titer (Fig. 5E). Notably, only 3/26 people who developed a relatively weak RBD-binding antibody had a neutralizing antibody titer higher than 1:160. One subject (P54) neither seroconverted for RBD antigen nor developed neutralizing antibodies to SARS-CoV-2 (Fig. 4D and E, and Fig. S2).

## DISCUSSION

Serology is critical to understanding the transmission, pathogenesis, mortality rate and epidemiology of emerging viruses. In the few months after the discovery of SARS-CoV-2 as a human pathogen, scientists have developed a large number of antibody assays and many commercial tests are now available. Although none of the assays have been fully validated yet, the FDA has granted emergency use authorization

(EUA) for multiple tests, while stressing the need for further validation. Investigators have already encountered problems with the specificity and sensitivity of commercial assays rushed to market (4, 22). Widespread use of inaccurate antibody assays could lead to policies that exacerbate the current SARS-CoV-2 pandemic instead of containing it.

To address the need for reliable antibody-based diagnostic assays, we focused on the RBD domain of the spike protein because this region is poorly conserved between different CoVs and is also known to be a major target of human antibodies (19). A major concern with using a protein domain instead of a full-length protein or whole virion for antibody detection is possible reduction in assay sensitivity. However, we observed that over 95% of SARS-CoV-2 patients developed antibodies to the RBD 9 days after onset of symptoms. Although our study included only a few recent convalescent sera and relatively large numbers of presumably positive samples from past common human CoV infections, the high specificity of the RBD antigen was also evident with the serum specimens from animals that were hyperimmunized with other zoonotic CoVs. Some patients infected with SARS-CoV-2 had antibodies that cross-reacted with the RBD of SARS-CoV-1. We have not tested the more distantly related RBD Ag from MERS CoV or the serum samples from individuals with confirmed MERS infection. Since SARS-CoV-1 and MERS CoV seroprevalence are very low in humans, the SARS-CoV-2 antibody cross-reactivity with SARS-CoV-1 is unlikely to pose diagnostic challenges. Other recent studies that have been published or under peer review also support the high specificity and sensitivity of the SARS-CoV-2 RBD for antibody detection (4, 17, 18). Amanat and colleagues tested samples from SARS-CoV-2 patients collected at the beginning of the epidemic in the USA and reported that the full length S protein and the RBD performed well for specific antibody detection (17). Okba and colleagues compared the performance of different SARS-CoV-2 antigens for antibody detection using samples from 10 SARS-CoV-2 patients in Europe (4). For the SARS-CoV-2 spike RBD, they observed levels of specificity and sensitivity that were comparable to our results reported here. The S2 subunit, which comprises conserved regions between CoVs, was less specific than the RBD (4). Perera and colleagues evaluated the performance of the RBD for antibody detection using samples from 24 SARS-CoV-2 patients in Hong Kong (18). They also observed high specificity and sensitivity when patients were tested 10 days or more after onset of illness. Our study with 77 specimens from 63 documented SARS-CoV-2 patients, which includes patients presenting to hospitals in North Carolina and Georgia with varying levels of severity, together with these recent studies conducted in New York, Europe and Hong Kong, strongly support the use of SARS-CoV-2 RBD as an antigen for antibody detection.



We designed the assay for separate detection of RBD-specific total Ig and IgM. As the pandemic is ongoing and most infections are likely to have occurred within the past few months, infected individuals have variable levels of antigen-specific IgG, IgM and IgA (Fig. 4C). To maximize assay sensitivity and to prevent different antibody isotypes competing for binding sites and reducing assay signal, we measured total Ig. We did not observe any decrease in assay specificity by designing the assay to monitor levels of total Ig instead of IgG binding to the RBD even at high serum concentration or with hyperimmune sera. Our study showed that IgM and IgA antibodies can also be detected using RBD-based serological assays. Both IgA and IgM antibodies are relatively short lived and indicative of a recent exposure. When conducting large scale population level surveillance for SARS-CoV-2 antibodies, it will be possible to distinguish recent from remote infections by measuring both total Ig and IgM (or IgA) binding to the RBD.

Antibody assays that correlate with protective immune responses in individuals who have recovered from SARS-CoV-2 infection and also reflect herd immunity at a population level are urgently needed to define each individual's risk of disease and to identify communities at high risk for new waves of infection. In animal studies with SARS-CoV-1, virus-neutralizing antibodies were strongly correlated with protective immune responses (19). We observed a striking correlation between the levels of RBD antibodies in patients and the ability of patient sera to neutralize SARS-CoV-2 virus. Other groups have recently reported finding a strong correlation between spike/RBD antibodies and SARS-CoV-2 neutralization in patients infected with SARS-CoV-2 (4, 17, 18). Our results point out that roughly one-third of patients develop very low or no neutralizing antibodies to SARS-CoV-2 and that Ig and IgM antibodies are useful predictors of neutralizing antibody levels in patients in the early convalescent phase (<6 weeks). As people developing a high level of RBD-binding antibodies (>1.5 OD) also have a robust neutralizing response, a simple RBD-based ELISA can be a useful tool to identify blood plasma donors. While further studies are needed to fully evaluate RBD antibodies as correlate of protective immunity, the results to date indicate that RBD antibodies are a promising correlate of protection in the early convalescent phase. A simple antibody detection assay that also predicts individual-level risk of disease will be a major advance for vaccine development and immunogenicity of vaccines because SARS-CoV-2 neutralization assays are time-consuming and require BSL-3 containment.

One SARS-CoV-2 patient (P54) who tested positive for viral RNA and required hospitalization did not develop RBD-specific Ig, IgM or neutralizing antibodies, even at 16 days after the onset of symptoms. This was the only person among the 68 PCR positive subjects who did not seroconvert by 9

days after onset of symptoms in the RBD-based assay. While we cannot rule out the possibility of a false positive PCR test result, others have also reported rare instances where people infected with SARS-CoVs have atypical, dampened immune responses (23). Further studies are needed to establish the frequency and significance of atypical antibody responses in SARS-CoV-2 patients and characterize the serological repertoire and epitopes targeted by the antibodies in convalescent sera.

As SARS-CoV-2 infections in the southeastern U.S. have started to increase relatively recently, all convalescent samples used in this study were collected within 90 days following onset of symptoms. In most patients, the convalescent sera had high end-point titers (>1:1000) in the RBD Ig ELISA supporting the utility of this assay even as antibody levels start to wane over time. We need to prioritize studies to prospectively monitor SARS-CoV-2 patients to determine the long-term kinetics of antibody levels and the performance of antibody detection assays over time.

All the SARS-CoV-2 human immune sera used for this study were collected from symptomatic patients that included many with serious illness requiring hospitalization. The research community currently does not know if individuals experiencing mild/inapparent symptoms after SARS-CoV-2 infection have similar kinetics and levels of RBD-binding antibodies as those experiencing symptomatic infections. Studies must be done with individuals experiencing mild/inapparent SARS-CoV-2 infections to define the kinetics and levels of RBD antibodies before implementing large population-level antibody testing.

## **MATERIALS AND METHODS**

### **Study design**

The goal of the study was to evaluate the performance of RBD-based spike antigen for reliable detection of SARS-CoV-2-specific antibodies. We produced properly folded RBD from the spike proteins of SARS and common-cold HCoVs in mammalian cells and used this antigen to evaluate a large panel of human sera from documented SARS-CoV-2 patients and control subjects, and hyperimmune sera from animals exposed to zoonotic CoVs. We also used a SARS-CoV-2 luciferase neutralization assay to assess the dynamics of the neutralizing antibody response and its association with the RBD-binding activity.

### **Structural analysis**

The structure coordinate sets of the spike proteins, spike protein complexes with their cognate receptor ACE2 and monoclonal antibodies were obtained from the Protein Data Bank (PDB). The structures were aligned to the reference spike protein using the PyMOL Molecular Graphics System (Version 1.2r3pre, Schrödinger, LLC). Molecular figures were drawn using PyMol. The PDB coordinates used for the

structural alignments and analysis were as follows: SARS-CoV-2 spike (6VSB), SARS-CoV-1 spike (6CRV), SARS-CoV-1 spike/S230 (6NB6), SARS-CoV-1 spike RBD/80R (2GHW), SARS-CoV-1 spike RBD/ m396 (2DD8), SARS-CoV-1 spike RBD/F26G19 (3BGF), SARS-CoV-2 spike RBD/CR3022 (6W41).

### **Protein expression and purification**

We used the following structure coordinates of the coronavirus spike proteins from the PDB to define the boundaries for the design of RBD expression constructs: SARS-CoV-2 (6VSB), SARS-CoV-1 (6CRV), HKU-1 (5I08), OC43 (6NZK), 229E (6U7H) NL63 (6SZS). Accordingly, a codon-optimized gene encoding for S1-RBD [SARS-CoV-1 (318 - 514 aa, P59594), SARS-CoV-2 (331 - 528 aa, QIS60558.1), OC43 (329 - 613 aa, P36334.1), HKU-1 (310 - 611 aa, QOZME7.1), 229E (295 - 433 aa, P15423.1) and NL63 (480 - 617 aa, Q6QIS2.1)] containing human serum albumin secretion signal sequence, three purification tags (6xHistidine tag, Halo tag, and Twin-Strep tag) and two TEV protease cleavage sites was cloned into the mammalian expression vector p $\alpha$ H. S1 RBDs were expressed in Expi293 cells (ThermoFisher) and purified from the culture supernatant by nickel-nitrilotriacetic acid agarose (Qiagen).

### **Generation of SARS-CoV-2 Spike VRP and immunized mouse sera**

To generate virus replicon particles (VRPs), the SARS-CoV-2 S gene was inserted into pVR21 3526 as previously described (24). In summary, the SARS-CoV-2 S gene was ligated into pVR21 following digestion by restriction endonuclease sites, PacI and ApaI. T7 RNA transcripts were generated using the SARS-CoV-2-S-pVR21 construct in conjunction with plasmids containing the Venezuelan equine encephalitis virus envelope glycoproteins and capsid protein. The RNA transcripts were then electroporated into baby hamster kidney fibroblasts and monitored for cytopathic effect. VRP were harvested 48 hours after electroporation and purified via high-speed ultra-centrifugation. To generate serum samples against SARS-CoV-2, 10-week-old BALB/c mice (Jackson Labs) were inoculated via footpad injection with the VRP and boosted with the same dose one time three weeks later. Serum samples were then collected from individual animals at 2 weeks post-boost and pooled for use in assays.

### **Human specimens**

All human specimens used in these studies were obtained after informed consent under good clinical research practices (GCP) and compliant with oversight by the relevant institutional review boards (IRBs). A list of the SARS-CoV-2 patient samples included in the study with basic demographic and clinical information can be found in Table S1.

UNC Hospital Specimens: Sera for this study were remnants from samples submitted to the UNC Hospital McLendon Clinical Laboratories or Blood Bank. SARS-CoV-2 patient

samples were obtained from patients with positive RT-PCR test result (in-house assay developed and validated by UNC Hospital McLendon Clinical Laboratory) for SARS-CoV-2. SARS-CoV-2 negative samples were obtained from patients with other diagnoses or from samples collected prior to December 2019 and cryopreserved at -80°C.

Emory University School of Medicine Specimens: Specimens were obtained from patients with symptomatic illness and clinical testing confirming SARS-CoV-2 by PCR (CDC SARS-CoV-2 test). De-identified specimens were shared with researchers at UNC consistent with local IRB protocols (Emory IRB# 00110683 and 00022371).

Blood plasma donor study: Convalescent sera was obtained from donors who volunteered for plasma collections at the UNC Donation Center. Fresh sera collected as part of the standard plasmapheresis procedure were saved for research from donors who signed informed consent. UNC IRB 20-1141 is conducted under good clinical research practices (GCP) and is compliant with institutional IRB oversight. All donors had confirmed SARS-CoV-2 infection by nasopharyngeal swab indicating the presence of SARS-CoV-2 RNA as performed by EUA approved qRT-PCR in a US laboratory with a Clinical Laboratory Improvement Amendments (CLIA) certification. All donors had recovered from their SARS-CoV-2 illness and were at least 14 days post last symptoms. Donors who presented for plasma collection prior to 28 days from their last symptoms had a confirmed negative nasopharyngeal RT-PCR test done within 72 hours prior to donation.

Healthy Unexposed Donors: Samples from healthy U.S. adult donors were obtained by the La Jolla Institute for Immunology (LJI) Clinical Core or provided by a commercial vendor (Carter Blood Care) for prior, unrelated studies between early 2015 and early 2018, at least one year before the emergence of SARS-CoV-2. The LJI Institutional Review Board approved the collection of these samples (LJI; VD-112). Samples from the Caribbean, Central America and South Asia were obtained from archived samples at UNC collected before December 2019 for other studies.

Human and Animal Specimens from BEI Resources: The following reagents were obtained through BEI Resources, NIAID, NIH as part of the Human Microbiome Project: Pooled sera obtained from rabbits dosed with a recombinant SARS-CoV spike protein (NRC-772), monoclonal anti-SARS-CoV S protein (Similar to 240C) (NR-616), anti-porcine respiratory coronavirus (PRCoV; ISU-1) serum obtained from pig (NR-460), anti-porcine Transmissible Gastroenteritis Virus obtained from pig (NR-458), anti-porcine respiratory coronavirus (PRCoV; ISU-1) serum obtained from guinea pig (NR-459), Anti-SARS Coronavirus obtained from guinea pig (NR-10361), Anti-Bovine Coronavirus (mebus) obtained from guinea pig (NR-455), Anti-Feline Infectious Peritonitis Virus, 79-1146 obtained from guinea pig (NR-2518), Anti-Avian

Infectious Bronchitis Virus, Massachusetts obtained from guinea pig (NR-2515), Anti-Turkey Coronavirus, Indiana obtained from guinea pig (NR-9465), Anti-Canine Coronavirus, UCD1 obtained from guinea pig (NR-2727), Anti-Human Parainfluenza Virus 2 obtained from guinea pig (NR-3231), Anti-Simian Virus 5 obtained from guinea pig (NR-3232), Anti-Human Parainfluenza Virus 3 obtained from guinea pig (NR-3235), Anti-Bovine Parainfluenza Virus 3 obtained from guinea pig (NR-3236), Anti-Human Parainfluenza Virus 4A obtained from guinea pig (NR-3239), Anti-Human Parainfluenza Virus 4B obtained from guinea pig (NR-3240), Human Convalescent Serum 001 to 2009 H1N1 Influenza A Virus (NR-18964), Human Convalescent Serum 002 to 2009 H1N1 Influenza A Virus (NR-18965), and Human Reference Antiserum to Respiratory Syncytial Virus (NR-4020). For some animal CoV anti-serum samples, the certificate of analysis provided by the BEI Resources confirmed the presence of neutralizing and binding antibodies (see Table S1).

#### **In-house RBD Ig and IgM ELISA**

All serum specimens tested by ELISA assay were heat-inactivated at 56°C for 30 min to reduce risk from any possible residual virus in serum. Briefly, 50 µl of spike RBD antigen at 4 µg/ml in Tris Buffered Saline (TBS) pH 7.4 was coated in the 96-well high-binding microtiter plate (Greiner Bio-One cat # 655061) for 1 hour at 37°C. Then the plate was washed three times with 200 µl of wash buffer (TBS containing 0.2% Tween 20) and blocked with 100 µl of blocking solution (3% milk in TBS containing 0.05% Tween 20) for 1 hour at 37°C. The blocking solution was removed, and 50 µl of serum sample at 1:20 or indicated dilutions in blocking buffer was added for 1 hour at 37°C. The plate was washed in the wash buffer, 50 µl of alkaline phosphatase-conjugated secondary goat anti-human secondary antibody at 1:2500 dilution was added for 1 hour at 37°C. For measuring total Ig, a mixture of anti-IgG (Sigma Cat # A9544), anti-IgA (Abcam Cat # AB97212), and anti-IgM (Sigma Cat # A3437) were added together. For measuring specific antibody isotype, only secondary goat anti-human IgG or IgA or IgM was used. The plate was washed, and 50 µl p-Nitrophenyl phosphate substrate (SIGMA FAST, Cat No N2770) was added to the plate and absorbance measured at 405nm using a plate reader (Biotek Epoch, Model # 3296573). For testing animal sera, the secondary antibody was matched to the species as follows: goat anti-mouse IgG (Sigma, A3688), goat anti-rabbit IgG (Abcam, ab6722), goat anti-pig IgG (Abcam, ab6916), and goat anti-guinea pig IgG (Abcam, ab7140).

#### **SARS-CoV-2-Washington neutralization assays**

Full-length viruses expressing luciferase were designed and recovered via reverse genetics and described previously (25, 26). Viruses were tittered in Vero E6 USAMRID cells to obtain a relative light units (RLU) signal of at least 20X the cell only control background. Vero E6 USAMRID cells were

plated at 20,000 cells per well the day prior in clear bottom black-walled 96-well plates (Corning 3904). Neutralizing antibody serum samples were tested at a starting dilution of 1:20, and were serially diluted 4-fold up to eight dilution spots. Antibody-virus complexes were incubated at 37°C with 5% CO<sub>2</sub> for 1 hour. Following incubation, growth media was removed and virus-antibody dilution complexes were added to the cells in duplicate. Virus-only controls and cell-only controls were included in each neutralization assay plate. Following infection, plates were incubated at 37°C with 5% CO<sub>2</sub> for 48 hours. After the 48 hour incubation, cells were lysed and luciferase activity was measured via Nano-Glo Luciferase Assay System (Promega) according to the manufacturer's specifications. SARS-CoV-2 neutralization titers were defined as the sample dilution at which a 50% reduction in RLU was observed relative to the average of the virus control wells.

#### **Statistical analysis**

Each data points in Fig. 1E, Fig. 2, Fig. 3B and 3C, Fig. 4 and 5 are presented as means of technical duplicates. The correlation of RBD binding and neutralization titers shown in Fig. 5A and Fig. 5B was evaluated using a Spearman correlation coefficient (rs) and the associated two-tailed p-value (GraphPad Prism, version 8). Receiver operating characteristic (ROC) analyses were performed to establish cutoff values for SARS-CoV-2 seropositivity using SPSS software. Statistical analyses were performed using SPSS software ver. 26.0 (IBM, Armonk, NY, USA).

#### **SUPPLEMENTARY MATERIALS**

immunology.sciencemag.org/cgi/content/full/5/48/eabc8413/DC1

Fig. S1. Titration curves of sera from SARS-CoV-2 positive patients.

Fig. S2. Seroconversion of SARS-CoV-2 neutralizing antibodies.

Fig. S3. Estimation of RBD ELISA assay cutoff.

Table S1. Summary of samples tested and associated characteristics (Excel spreadsheet).

Table S2. Raw data file (Excel spreadsheet).

#### **REFERENCES AND NOTES**

1. Y. Jin, H. Yang, W. Ji, W. Wu, S. Chen, W. Zhang, G. Duan, *Virology, Epidemiology, Pathogenesis, and Control of COVID-19*. *Viruses* **12**, 372 (2020). [doi:10.3390/v12040372](https://doi.org/10.3390/v12040372) [Medline](#)
2. A. K. Winter, S. T. Hegde, The important role of serology for COVID-19 control. *Lancet Infect. Dis.* S1473-3099(20)30322-4 (2020). [doi:10.1016/S1473-3099\(20\)30322-4](https://doi.org/10.1016/S1473-3099(20)30322-4) [Medline](#)
3. L. Guo, L. Ren, S. Yang, M. Xiao, D. Chang, F. Yang, C. S. Dela Cruz, Y. Wang, C. Wu, Y. Xiao, L. Zhang, L. Han, S. Dang, Y. Xu, Q. Yang, S. Xu, H. Zhu, Y. Xu, Q. Jin, L. Sharma, L. Wang, J. Wang, Profiling Early Humoral Response to Diagnose Novel Coronavirus Disease (COVID-19). *Clin. Infect. Dis.* ciaa310 (2020). [doi:10.1093/cid/ciaa310](https://doi.org/10.1093/cid/ciaa310) [Medline](#)
4. N. M. A. Okba, M. A. Müller, W. Li, C. Wang, C. H. GeurtsvanKessel, V. M. Corman, M. M. Lamers, R. S. Sikkema, E. de Bruin, F. D. Chandler, Y. Yazdanpanah, Q. Le Hingrat, D. Descamps, N. Houhou-Fidouh, C. B. E. M. Reusken, B.-J. Bosch, C. Drosten, M. P. G. Koopmans, B. L. Haagmans, Severe Acute Respiratory Syndrome Coronavirus 2-Specific Antibody Responses in Coronavirus Disease 2019 Patients. *Emerg. Infect. Dis.* **26** (2020). [doi:10.3201/eid2607.200841](https://doi.org/10.3201/eid2607.200841)

## Medline

5. K. K. To, O. T.-Y. Tsang, W.-S. Leung, A. R. Tam, T.-C. Wu, D. C. Lung, C. C.-Y. Yip, J.-P. Cai, J. M.-C. Chan, T. S.-H. Chik, D. P.-L. Lau, C. Y.-C. Choi, L.-L. Chen, W.-M. Chan, K.-H. Chan, J. D. Ip, A. C.-K. Ng, R. W.-S. Poon, C.-T. Luo, V. C.-C. Cheng, J. F.-W. Chan, I. F.-N. Hung, Z. Chen, H. Chen, K.-Y. Yuen, Temporal profiles of viral load in posterior oropharyngeal saliva samples and serum antibody responses during infection by SARS-CoV-2: An observational cohort study. *Lancet Infect. Dis.* **20**, 565–574 (2020). doi:10.1016/S1473-3099(20)30196-1 Medline
6. J. Zhao, Q. Yuan, H. Wang, W. Liu, X. Liao, Y. Su, X. Wang, J. Yuan, T. Li, J. Li, S. Qian, C. Hong, F. Wang, Y. Liu, Z. Wang, Q. He, Z. Li, B. He, T. Zhang, Y. Fu, S. Ge, L. Liu, J. Zhang, N. Xia, Z. Zhang, Antibody responses to SARS-CoV-2 in patients of novel coronavirus disease 2019. *Clin. Infect. Dis.* ciaa344 (2020). doi:10.1093/cid/ciaa344 Medline
7. P. R. Hsueh, L. M. Huang, P. J. Chen, C. L. Kao, P. C. Yang, Chronological evolution of IgM, IgA, IgG and neutralisation antibodies after infection with SARS-associated coronavirus. *Clin. Microbiol. Infect.* **10**, 1062–1066 (2004). doi:10.1111/j.1469-0691.2004.01009.x Medline
8. P. G. Choe, R. A. P. M. Perera, W. B. Park, K.-H. Song, J. H. Bang, E. S. Kim, H. B. Kim, L. W. R. Ko, S. W. Park, N.-J. Kim, E. H. Y. Lau, L. L. M. Poon, M. Peiris, M. D. Oh, MERS-CoV Antibody Responses 1 Year after Symptom Onset, South Korea, 2015. *Emerg. Infect. Dis.* **23**, 1079–1084 (2017). doi:10.3201/eid2307.170310 Medline
9. W. Liu, A. Fontanet, P.-H. Zhang, L. Zhan, Z.-T. Xin, L. Baril, F. Tang, H. Lv, W.-C. Cao, Two-year prospective study of the humoral immune response of patients with severe acute respiratory syndrome. *J. Infect. Dis.* **193**, 792–795 (2006). doi:10.1086/500469 Medline
10. J. Cui, F. Li, Z. L. Shi, Origin and evolution of pathogenic coronaviruses. *Nat. Rev. Microbiol.* **17**, 181–192 (2019). doi:10.1038/s41579-018-0118-9 Medline
11. Z. Li, Y. Yi, X. Luo, N. Xiong, Y. Liu, S. Li, R. Sun, Y. Wang, B. Hu, W. Chen, Y. Zhang, J. Wang, B. Huang, Y. Lin, J. Yang, W. Cai, X. Wang, J. Cheng, Z. Chen, K. Sun, W. Pan, Z. Zhan, L. Chen, F. Ye, Development and clinical application of a rapid IgM-IgG combined antibody test for SARS-CoV-2 infection diagnosis. *J. Med. Virol.* jmv.25727 (2020). doi:10.1002/jmv.25727 Medline
12. K. H. Chan, J. F.-W. Chan, H. Tse, H. Chen, C. C.-Y. Lau, J.-P. Cai, A. K.-L. Tsang, X. Xiao, K. K.-W. To, S. K.-P. Lau, P. C.-Y. Woo, B.-J. Zheng, M. Wang, K.-Y. Yuen, Cross-reactive antibodies in convalescent SARS patients' sera against the emerging novel human coronavirus EMC (2012) by both immunofluorescent and neutralizing antibody tests. *J. Infect.* **67**, 130–140 (2013). doi:10.1016/j.jinf.2013.03.015 Medline
13. D. M. Patrick, M. Petric, D. M. Skowronski, R. Guasparini, T. F. Booth, M. Krajden, P. McGeer, N. Bastien, L. Gustafson, J. Dubord, D. Macdonald, S. T. David, L. F. Srour, R. Parker, A. Andonov, J. Isaac-Renton, N. Loewen, G. McNabb, A. McNabb, S.-H. Goh, S. Henwick, C. Astell, J. P. Guo, M. Drebot, R. Tellier, F. Plummer, R. C. Brunham, An Outbreak of Human Coronavirus OC43 Infection and Serological Cross-reactivity with SARS Coronavirus. *Can. J. Infect. Dis. Med. Microbiol.* **17**, 330–336 (2006). doi:10.1155/2006/152612 Medline
14. M. Maache, F. Komurian-Pradel, A. Rajoharison, M. Perret, J.-L. Berland, S. Pouzol, A. Bagnaud, B. Duverger, J. Xu, A. Osuna, G. Paranhos-Baccalà, False-positive results in a recombinant severe acute respiratory syndrome-associated coronavirus (SARS-CoV) nucleocapsid-based western blot assay were rectified by the use of two subunits (S1 and S2) of spike for detection of antibody to SARS-CoV. *Clin. Vaccine Immunol.* **13**, 409–414 (2006). doi:10.1128/CVI.13.3.409-414.2006 Medline
15. X. Y. Che, L. W. Qiu, Z. Y. Liao, Y. D. Wang, K. Wen, Y. X. Pan, W. Hao, Y. B. Mei, V. C. C. Cheng, K. Y. Yuen, Antigenic cross-reactivity between severe acute respiratory syndrome-associated coronavirus and human coronaviruses 229E and OC43. *J. Infect. Dis.* **191**, 2033–2037 (2005). doi:10.1086/430355 Medline
16. B. Meyer, C. Drosten, M. A. Müller, Serological assays for emerging coronaviruses: Challenges and pitfalls. *Virus Res.* **194**, 175–183 (2014). doi:10.1016/j.virusres.2014.03.018 Medline
17. F. Amanat, D. Stadlbauer, S. Strohmaier, T. H. O. Nguyen, V. Chromikova, M. McMahon, K. Jiang, G. A. Arunkumar, D. Jarczyszak, J. Polanco, M. Bermudez-Gonzalez, G. Kleiner, T. Aydllo, L. Miorin, D. S. Fierer, L. A. Lugo, E. M. Kojic, J. Stoeber, S. T. H. Liu, C. Cunningham-Rundles, P. L. Felgner, T. Moran, A. García-Sastre, D. Caplivski, A. C. Cheng, K. Kedzierska, O. Vapalahti, J. M. Hepojoki, V. Simon, F. Krammer, A serological assay to detect SARS-CoV-2 seroconversion in humans. *Nat. Med.* (2020). doi:10.1038/s41591-020-0913-5 Medline
18. R. A. Perera, C. K. P. Mok, O. T. Y. Tsang, H. Lv, R. L. W. Ko, N. C. Wu, M. Yuan, W. S. Leung, J. M. C. Chan, T. S. H. Chik, C. Y. C. Choi, K. Leung, K. H. Chan, K. C. K. Chan, K.-C. Li, J. T. Wu, I. A. Wilson, A. S. Monto, L. L. M. Poon, M. Peiris, Serological assays for severe acute respiratory syndrome coronavirus 2 (SARS-CoV-2), March 2020. *Euro Surveill.* **25** (2020). doi:10.2807/1560-7917.ES.2020.25.16.2000421 Medline
19. L. Du, Y. He, Y. Zhou, S. Liu, B.-J. Zheng, S. Jiang, The spike protein of SARS-CoV—A target for vaccine and therapeutic development. *Nat. Rev. Microbiol.* **7**, 226–236 (2009). doi:10.1038/nrmicro2090 Medline
20. H. Lv, N. C. Wu, O. T.-Y. Tsang, M. Yuan, R. A. P. M. Perera, W. S. Leung, R. T. Y. So, J. M. C. Chan, G. K. Yip, T. S. H. Chik, Y. Wang, C. Y. C. Choi, Y. Lin, W. W. Ng, J. Zhao, L. L. M. Poon, J. S. M. Peiris, I. A. Wilson, C. K. P. Mok, Cross-reactive antibody response between SARS-CoV-2 and SARS-CoV infections. bioRxiv, 10.1101/2020.03.15.993097 (2020); www.biorxiv.org/content/10.1101/2020.03.15.993097v1.
21. X. Tian, C. Li, A. Huang, S. Xia, S. Lu, Z. Shi, L. Lu, S. Jiang, Z. Yang, Y. Wu, T. Ying, Potent binding of 2019 novel coronavirus spike protein by a SARS coronavirus-specific human monoclonal antibody. *Emerg. Microbes Infect.* **9**, 382–385 (2020). doi:10.1080/22221751.2020.1729069 Medline
22. M. Döhla, C. Boesecke, B. Schulte, C. Diegmann, E. Sib, E. Richter, M. Eschbach-Bludau, S. Aldabbagh, B. Marx, A.-M. Eis-Hübinger, R. M. Schmithausen, H. Streeck, Rapid point-of-care testing for SARS-CoV-2 in a community screening setting shows low sensitivity. *Public Health* **182**, 170–172 (2020). doi:10.1016/j.puhe.2020.04.009 Medline
23. F. Wu, A. Wang, M. Liu, Q. Wang, J. Chen, S. Xia, Y. Ling, Y. Zhang, J. Xun, L. Lu, S. Jiang, H. Lu, Y. Wen, J. Huang, Neutralizing antibody responses to SARS-CoV-2 in a COVID-19 recovered patient cohort and their implications. medRxiv, 10.1101/2020.03.30.20047365 (2020); www.medrxiv.org/content/10.1101/2020.03.30.20047365v2.
24. S. Agnihothram, V. D. Menachery, B. L. Yount Jr., L. C. Lindesmith, T. Scobey, A. Whitmore, A. Schäfer, M. T. Heise, R. S. Baric, Development of a Broadly Accessible Venezuelan Equine Encephalitis Virus Replicon Particle Vaccine Platform. *J. Virol.* **92**, e00027-18 (2018). doi:10.1128/JVI.00027-18 Medline
25. T. Scobey, B. L. Yount, A. C. Sims, E. F. Donaldson, S. S. Agnihothram, V. D. Menachery, R. L. Graham, J. Swanstrom, P. F. Bove, J. D. Kim, S. Grego, S. H. Randell, R. S. Baric, Reverse genetics with a full-length infectious cDNA of the Middle East respiratory syndrome coronavirus. *Proc. Natl. Acad. Sci. U.S.A.* **110**, 16157–16162 (2013). doi:10.1073/pnas.1311542110 Medline
26. B. Yount, K. M. Curtis, E. A. Fritz, L. E. Hensley, P. B. Jahrling, E. Prentice, M. R. Denison, T. W. Geisbert, R. S. Baric, Reverse genetics with a full-length infectious cDNA of severe acute respiratory syndrome coronavirus. *Proc. Natl. Acad. Sci. U.S.A.* **100**, 12995–13000 (2003). doi:10.1073/pnas.1735582100 Medline

**Acknowledgments:** We gratefully acknowledge BEI Resources (<https://www.beiresources.org>) for the prompt processing and shipping of the reagents. We are grateful for the expert procedural care provided by the UNC Hospital and Blood Donor Center and to the patients and blood donors providing samples for the study. **Funding:** This work was funded by the University of North Carolina School of Medicine (L.P. and A.D.), National Institutes of Health Contract 75N9301900065 (A.S. and D.W.), NIH NIAID T32 AI007151 (D.M.) and a



Burroughs Wellcome Fund Postdoctoral Enrichment Program Award (D.M.).

**Author contributions:** Conceptualization: L.P., A.M.d S. Investigation: L.P., B.S., R.J., D.R.M., R.R., C.E.E. Resources: A.M, C.C, L.B., S.W., Y.P., E.W., E.M.S., N.R., S.E., D.W., L.V.T., Y.J.H., D.M., A.S., M.H.C., J.S., R.S.B. Writing: L.P., A.M.d S. Supervision: L.P, R.S.B, A.M.d S.

**Competing interests:** The authors declare that they have no competing interests.

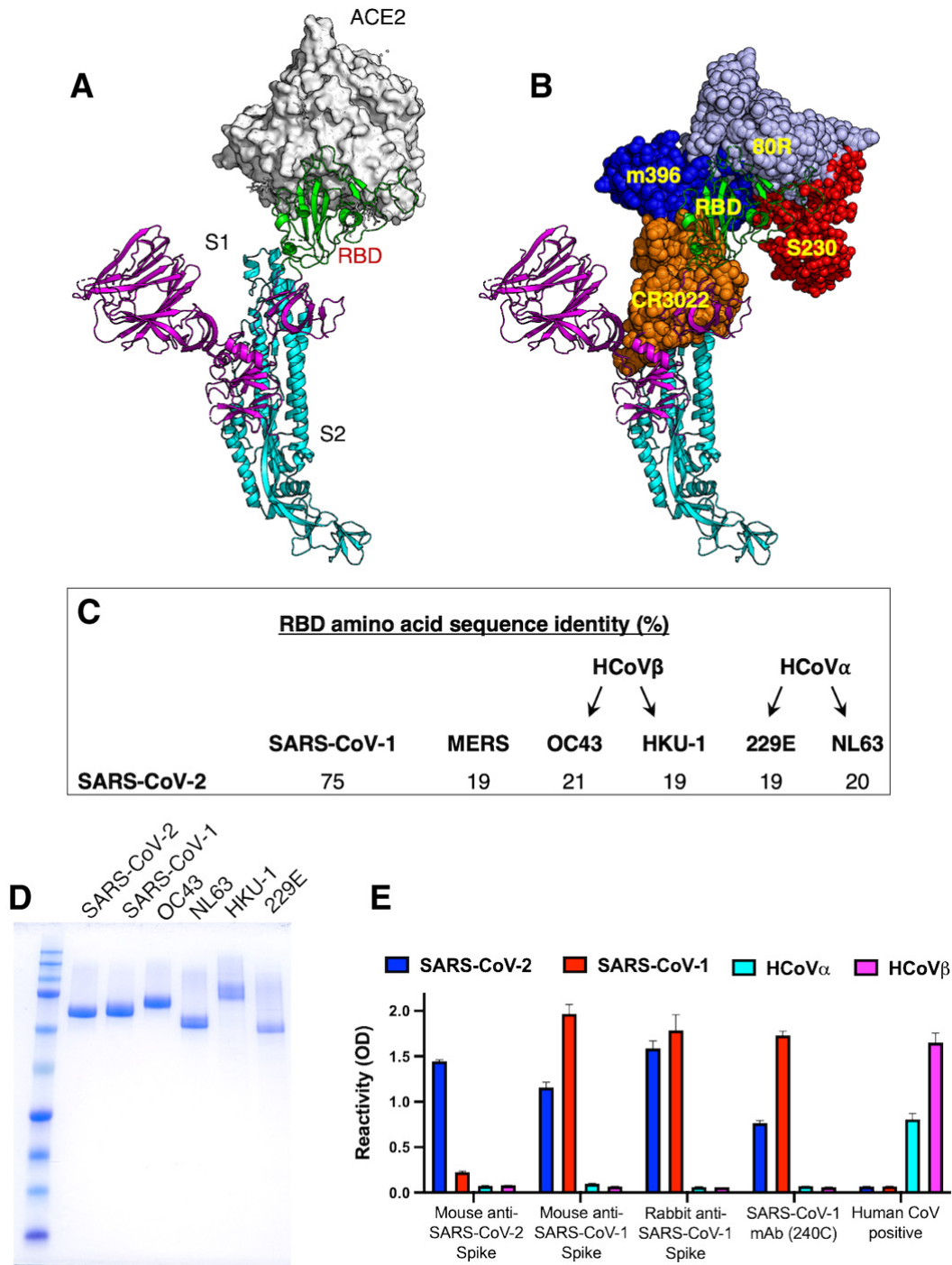
**Data and Materials Availability:** The recombinant RBD antigens from the spike proteins used in this study are available under a standard MTA with the University of North Carolina. Please contact Lakshmanane Premkumar (prem@med.unc.edu) or Aravinda M. de Silva (aravinda\_desilva@med.unc.edu). All data needed to evaluate the conclusions in the paper are present in the paper or the Supplementary Materials. This work is licensed under a Creative Commons Attribution 4.0 International (CC BY 4.0) license, which permits unrestricted use, distribution, and reproduction in any medium, provided the original work is properly cited. To view a copy of this license, visit <https://creativecommons.org/licenses/by/4.0/>. This license does not apply to figures/photos/artwork or other content included in the article that is credited to a third party; obtain authorization from the rights holder before using such material.

Submitted 16 May 2020

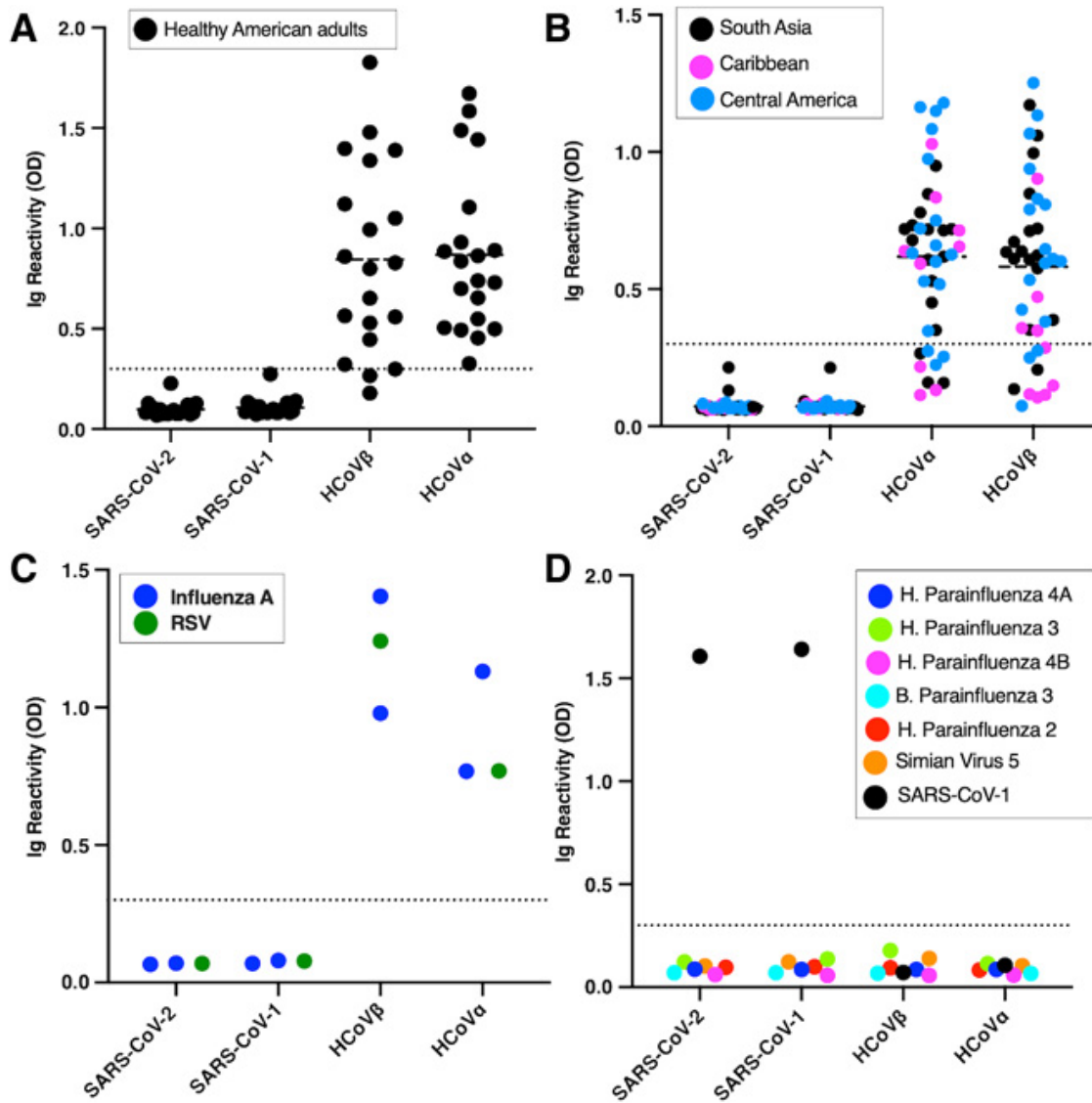
Accepted 9 June 2020

Published First Release 11 June 2020

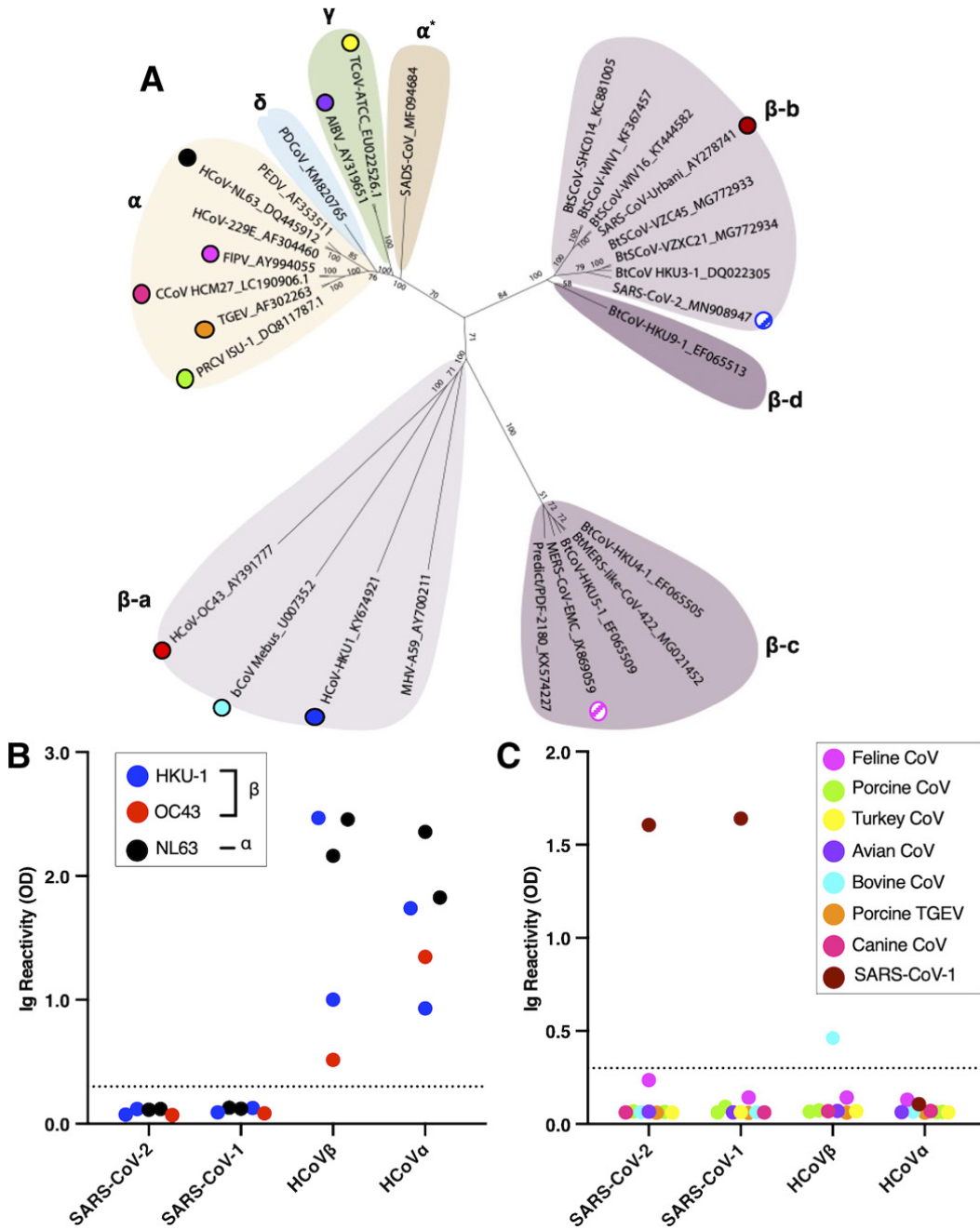
10.1126/sciimmunol.abc8413



**Fig. 1. Production and characterization of the RBD of the coronavirus spike antigens.** (A) The spike protein on the virion surface engages its cognate receptor via the RBD. (B) RBD of the spike protein is the main human antibody target in SARS-CoV-1. (C) The amino acid sequence corresponding to RBD of the spike protein is poorly conserved between SARS-CoV-2 and common human coronaviruses. (D) Coomassie-stained SDS-PAGE of purified spike RBD antigens from different CoVs. (E) Binding characterization of the spike RBD antigens with immune sera and a monoclonal antibody. SARS-CoV-1 monoclonal antibody (240C), serum from a mouse immunized with VRP expressing SARS-CoV-2 or SARS-CoV-1 spike protein, serum from a rabbit immunized with SARS-CoV-1 spike protein and an archived human sample collected before SARS-CoV-2 were tested for binding against RBD spike antigens from SARS-CoV-2, SARS-CoV-1, HCoV $\alpha$  (NL63) and HCoV $\beta$  (HKU-1).



**Fig. 2. Evaluation of SARS-CoV-2 spike RBD antigen specificity using blood samples collected before the emergence of SARS-COV-2.** Spike RBD antigen binding was assessed by in-house ELISA assay against a panel of de-identified archived serum specimens obtained from (A) American healthy adults; (B) Convalescent sera from dengue/Zika patients in South Asia, Caribbean, and Central America; (C) People who had recently recovered from viral respiratory illnesses; and (D) Guinea pigs immunized with respiratory viruses or SARS-CoV-1 spike protein. The cutoff values determined by the receiver operating (ROC) curve analysis (Fig S3) for the ELISA assay are indicated by the broken line.

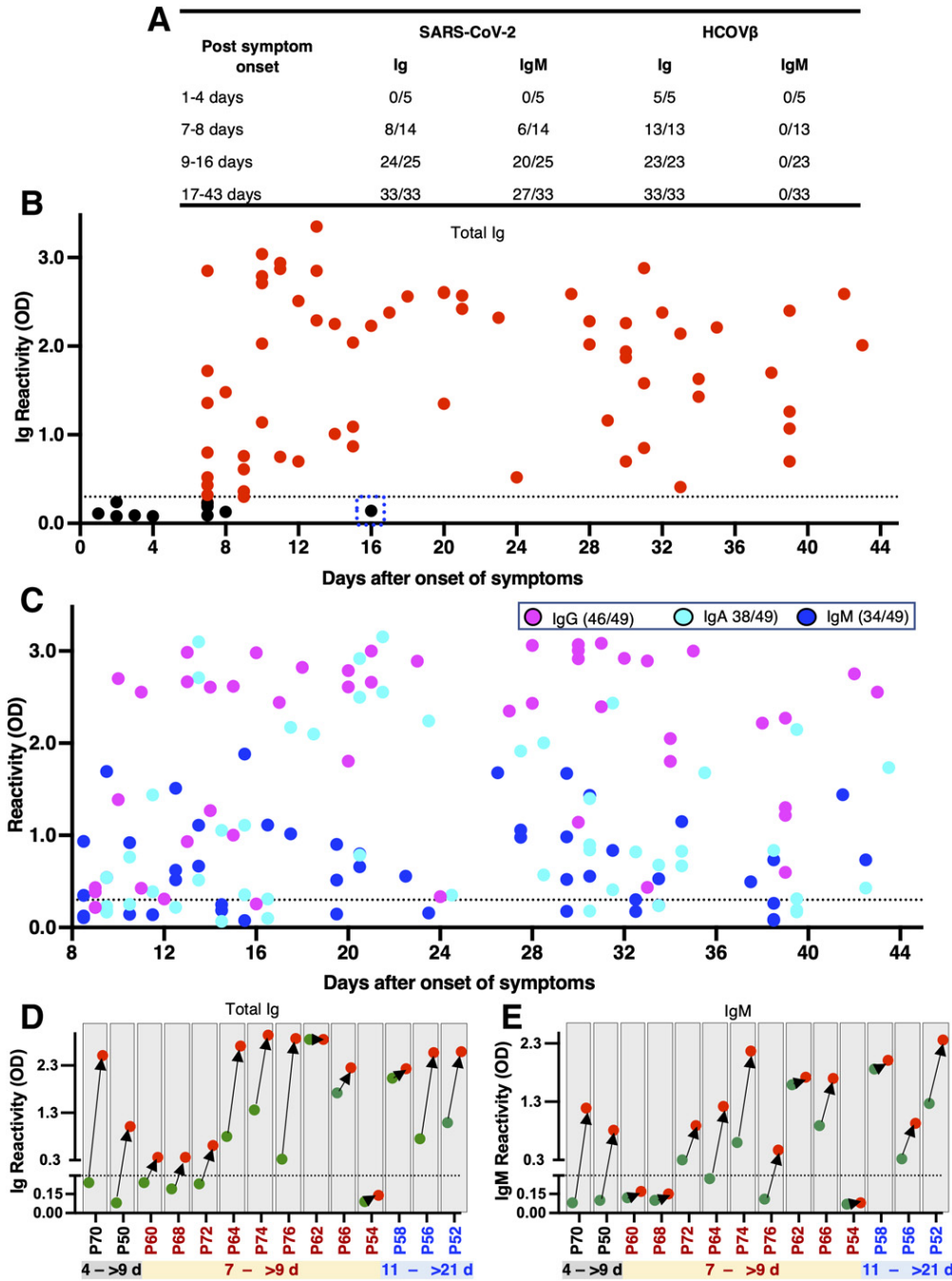


**Fig. 3. Evaluation of SARS-CoV-2 spike RBD antigen specificity against common human CoVs and animal CoVs sera. (A)** Phylogenetic tree of the spike protein from representative coronaviruses.

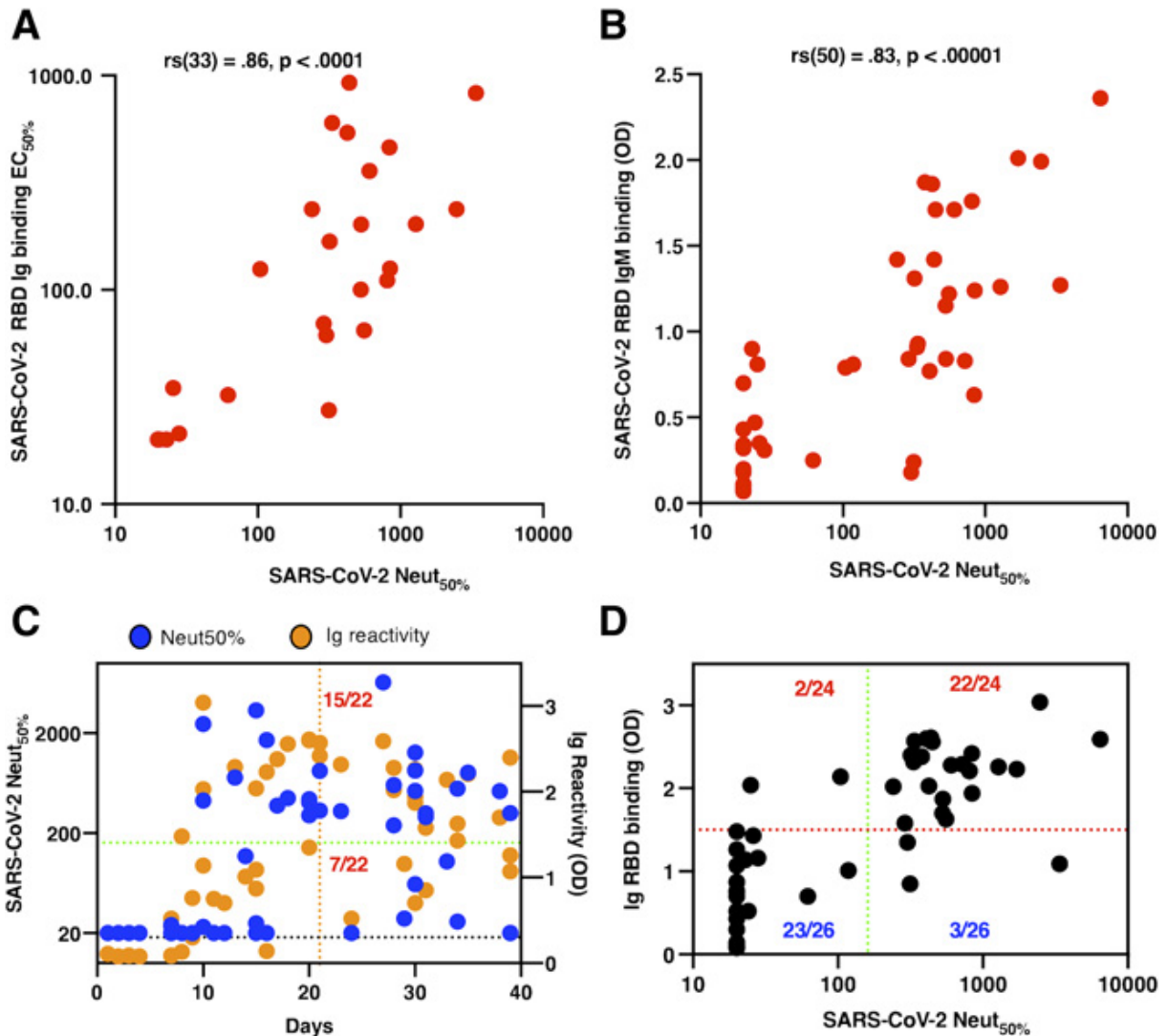
Coronavirus genera are grouped by classic subgroup designations ( $\alpha$ ,  $\beta$ a-d,  $\gamma$ , and  $\delta$ ). SADS-CoV is a distinctive member of the  $\alpha$  subgroup (indicated by \*). Numbers following the underscores in each sequence correspond to the GenBank accession number. Spike RBD antigen binding was assessed by in-house ELISA assay using (B) human convalescent samples obtained from PCR-confirmed HCoV $\alpha$  (NL63, black) and HCoV $\beta$  (OC43 (red), HKU-1 (blue)) infections and (C) sera from guinea pigs or pigs immunized with spike antigen from SARS-CoV-1 or indicated animal CoV. The cutoff values for the ELISA assay are indicated by the broken line. Feline Infectious Peritonitis Virus, 79-1146 (Feline CoV, Pink); respiratory coronavirus strain ISU-1(Porcine CoV, green); Porcine Transmissible

Gastroenteritis Virus (TGEV, orange); Bovine Coronavirus strain mebus (Bovine CoV, cyan); Avian Infectious Bronchitis Virus, Massachusetts (Avian CoV, violet); Turkey Coronavirus, Indiana (Turkey CoV, yellow); Canine Coronavirus strain UCD1 (Canine CoV, hot pink); SARS-CoV-2 (SARS, brown).





**Fig. 4. Evaluation of SARS-CoV-2 spike RBD antigen sensitivity. (A)** Overall SARS-CoV-2 spike RBD antigen sensitivity as assessed by the in-house Ig and IgM ELISA assays using clinical specimens obtained from PCR-confirmed SARS-CoV-2 subjects. For comparison, binding results of the RBD spike antigens from a representative HCoV $\beta$  (HKU-1) with the same specimens are also presented. The changes of the levels of **(B)** total Ig and **(C)** IgG, IgA and IgM antibodies binding to RBD of the SARS-CoV-2 spike antigen. The binding of the spike RBD antigen from SARS-CoV-2 to 49 de-identified serum samples obtained from SARS-CoV-2 positive subjects at different time points since onset of symptoms are presented. The cutoff values for the ELISA assay are indicated by the broken line. The dashed blue box in **(B)** indicates a single PCR positive and seronegative subject. Seroconversion of **(D)** total Ig and **(E)** IgM antibodies against RBD of the SARS-CoV-2 spike antigen among 14 representative SARS-CoV-2 patients during the acute phase since onset of symptoms. The first sample (green) and follow-up sample (red) are connected by black arrow. The time interval between the first and follow-up sample are provided on the x-axis. The binding signals below the broken line are denoted as seronegative.



**Fig. 5. Correlation between spike RBD antigen binding and SARS-CoV-2 neutralizing antibody titers.** Correlations between (A) total Ig and (B) IgM RBD binding and the SARS-CoV-2 neutralizing antibody titers. Scatter plots were generated using individual serum binding to RBD antigen (y-axis) versus SARS-CoV-2 neutralizing antibody titers (x-axis). The nonparametric Spearman correlation coefficient ( $r_s$ ) and the associated two-tailed p-value were calculated (GraphPad Prism, version 5.0). (C) Relationship between SARS-CoV-2 neutralizing antibody titer and days after onset of symptoms. (D) Total Ig antibody binding to RBD as a surrogate for identifying people with high SARS-CoV-2 neutralizing antibodies. A total of 50 serum samples collected between 1 and 39 days after onset of symptoms from PCR-confirmed SARS-CoV-2 subjects were measured for Ig and IgM binding to spike RBD antigen and SARS-CoV-2 neutralization assay. The FDA-recommended neutralizing antibody titer for plasma therapy (1:160) is indicated by the broken green line.