

University of Nebraska - Lincoln

DigitalCommons@University of Nebraska - Lincoln

---

Publications of the Rural Futures Institute

Rural Futures Institute at the University of  
Nebraska

---

2020

## Exploring the Nebraska Rural Poll, 2020

Rebecca Vogt

Cheryl Burkhart-Kriesel

Bradley Lubben

L.J. McElravy

Tim Meyer

*See next page for additional authors*

Follow this and additional works at: <https://digitalcommons.unl.edu/rfipubs>



Part of the [Agriculture Commons](#), [Arts and Humanities Commons](#), [Business Commons](#), [Education Commons](#), [Engineering Commons](#), [Medicine and Health Sciences Commons](#), and the [Social and Behavioral Sciences Commons](#)

---

This Article is brought to you for free and open access by the Rural Futures Institute at the University of Nebraska at DigitalCommons@University of Nebraska - Lincoln. It has been accepted for inclusion in Publications of the Rural Futures Institute by an authorized administrator of DigitalCommons@University of Nebraska - Lincoln.

---

**Authors**

Rebecca Vogt, Cheryl Burkhardt-Kriesel, Bradley Lubben, L.J. McElravy, Tim Meyer, Steve Schulz, and Jason L. Weigle

---



# Exploring the Nebraska Rural Poll

2020

UNL Department of Agricultural Economics,  
Nebraska Extension & University of Nebraska Rural Futures Institute

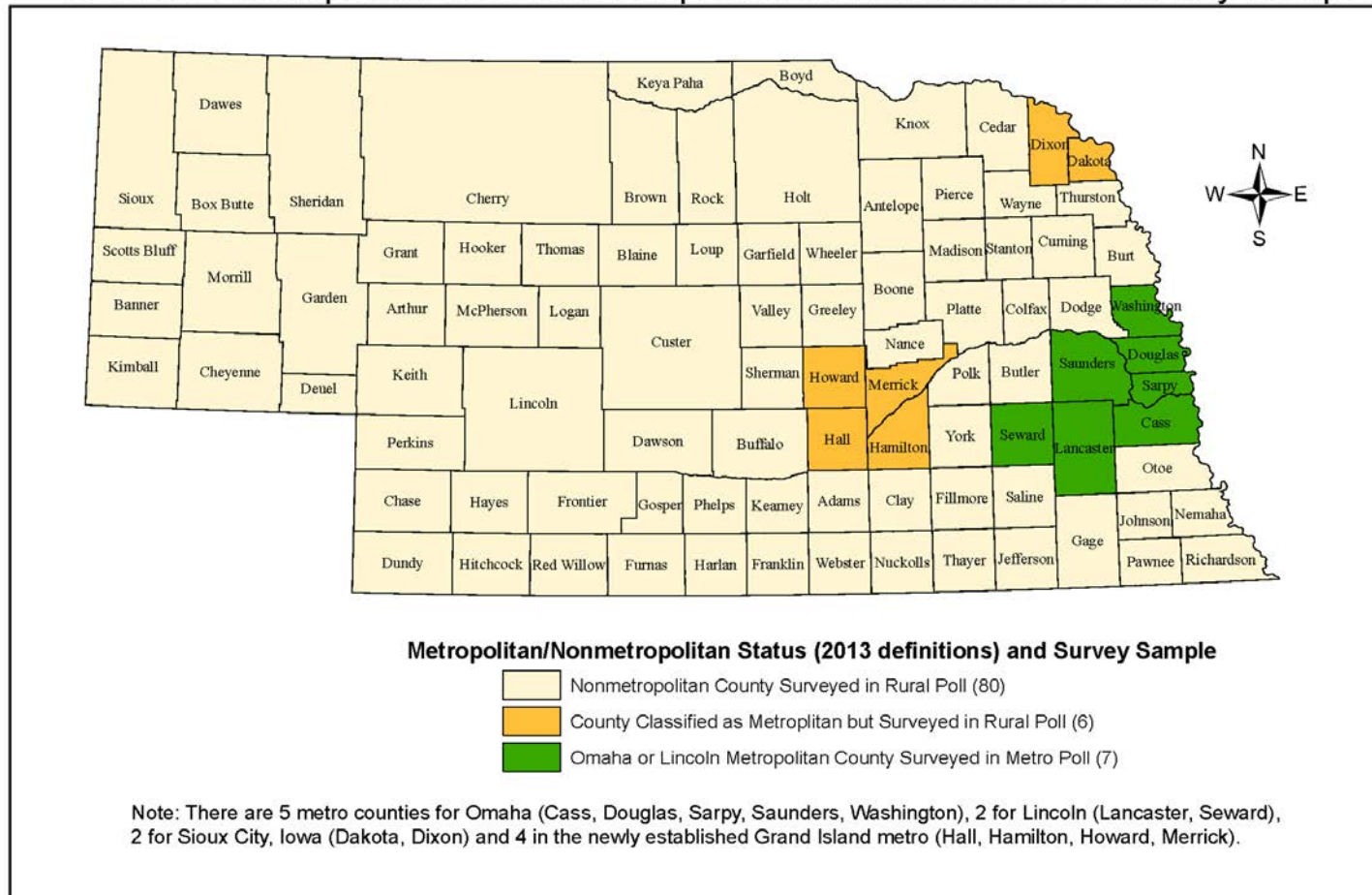


**The Nebraska Rural Poll was initiated in 1996.**

**Over the past 24 years, input has been gathered from over 64,000 nonmetropolitan Nebraskans.**

**102 separate reports have been produced covering 31 unique topics**

## Nebraska Metropolitan and Nonmetropolitan Counties and 2014 Survey Sample



Source: 2013 Metropolitan and Micropolitan Definitions, Office of Management and Budget, released 2-28-13

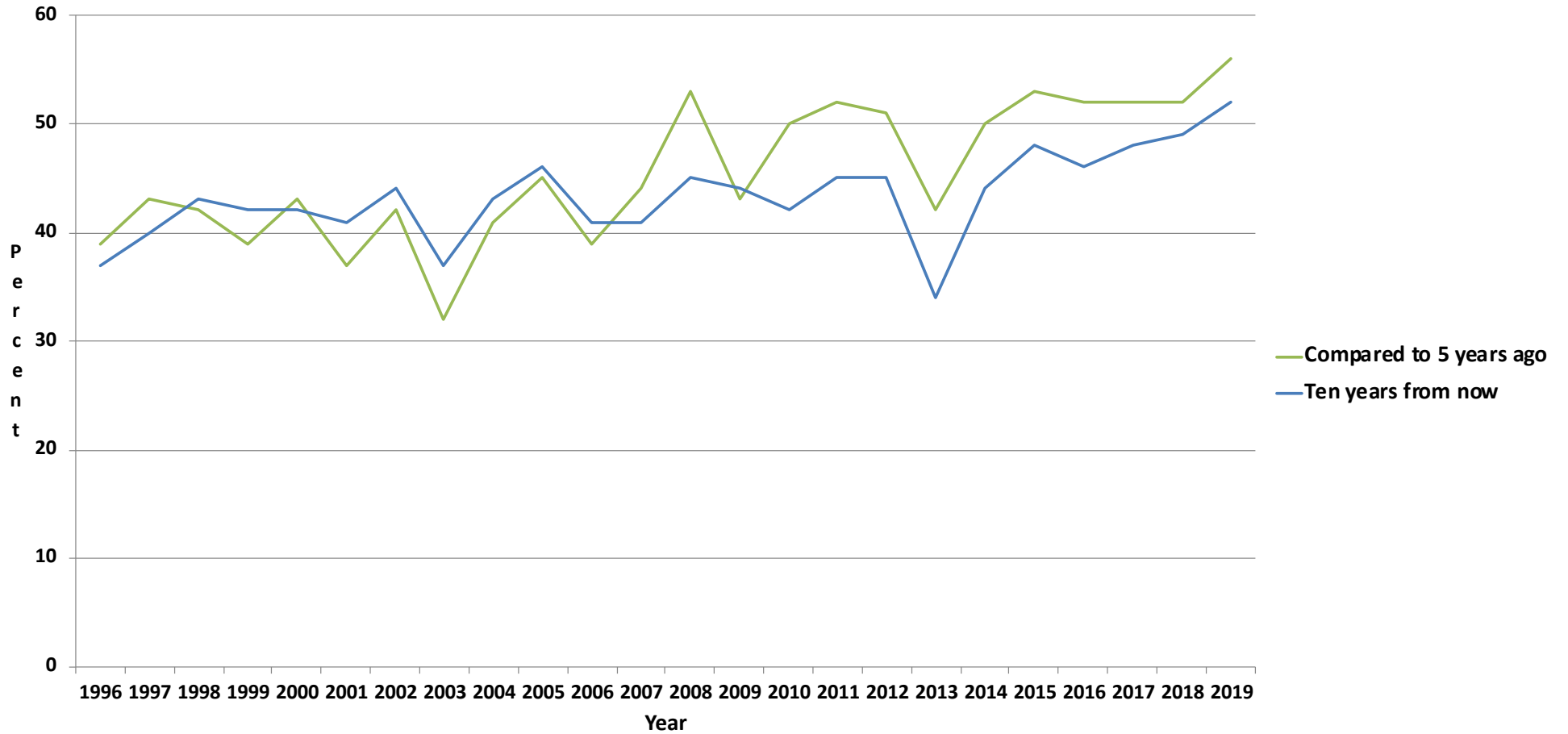
Prepared by: David Drozd, Center for Public Affairs Research, University of Nebraska at Omaha - December 1, 2014

# Trend Analysis



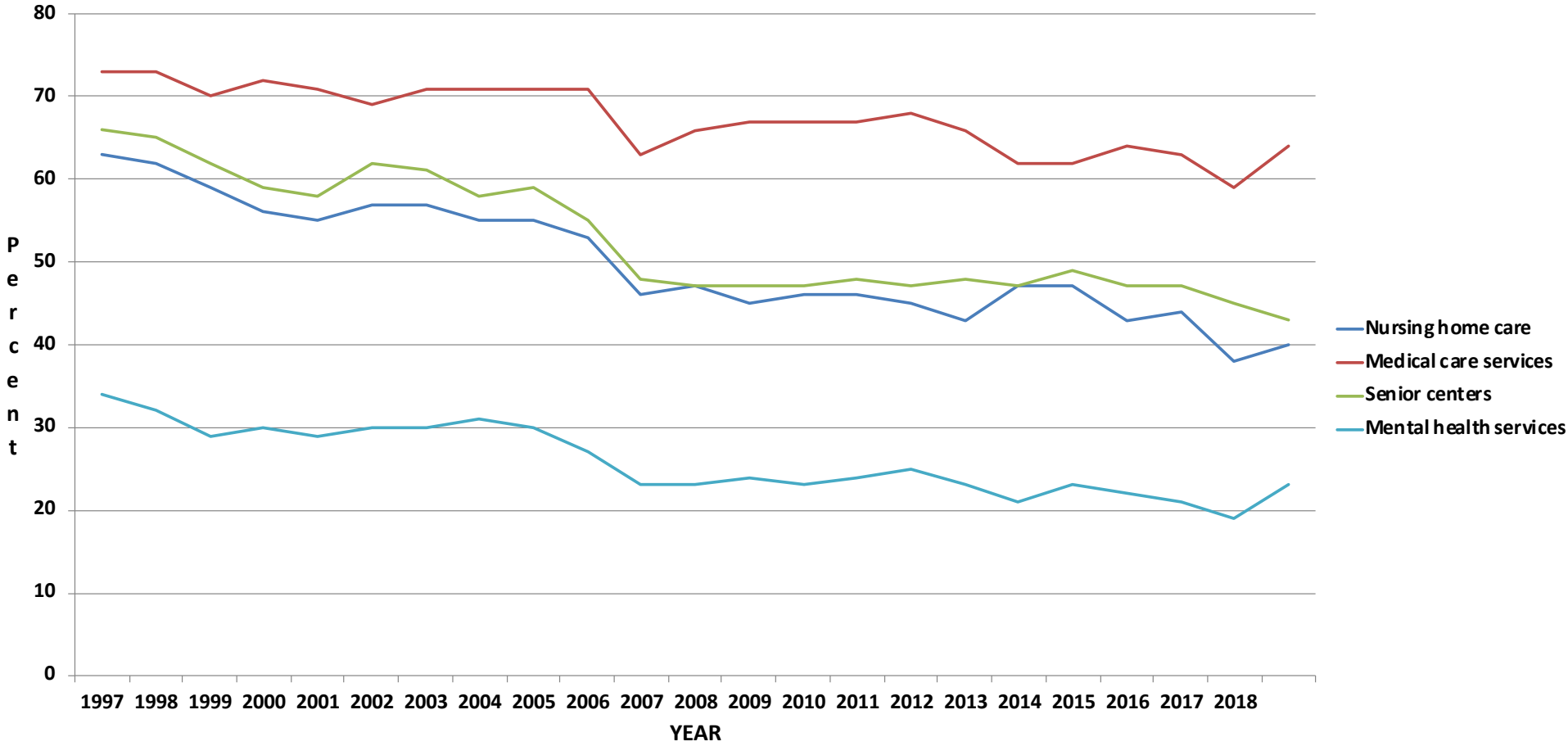
# All things considered, do you think that you are (or will be) better or worse off

## Percent Responding "Better Off" or "Much Better Off"



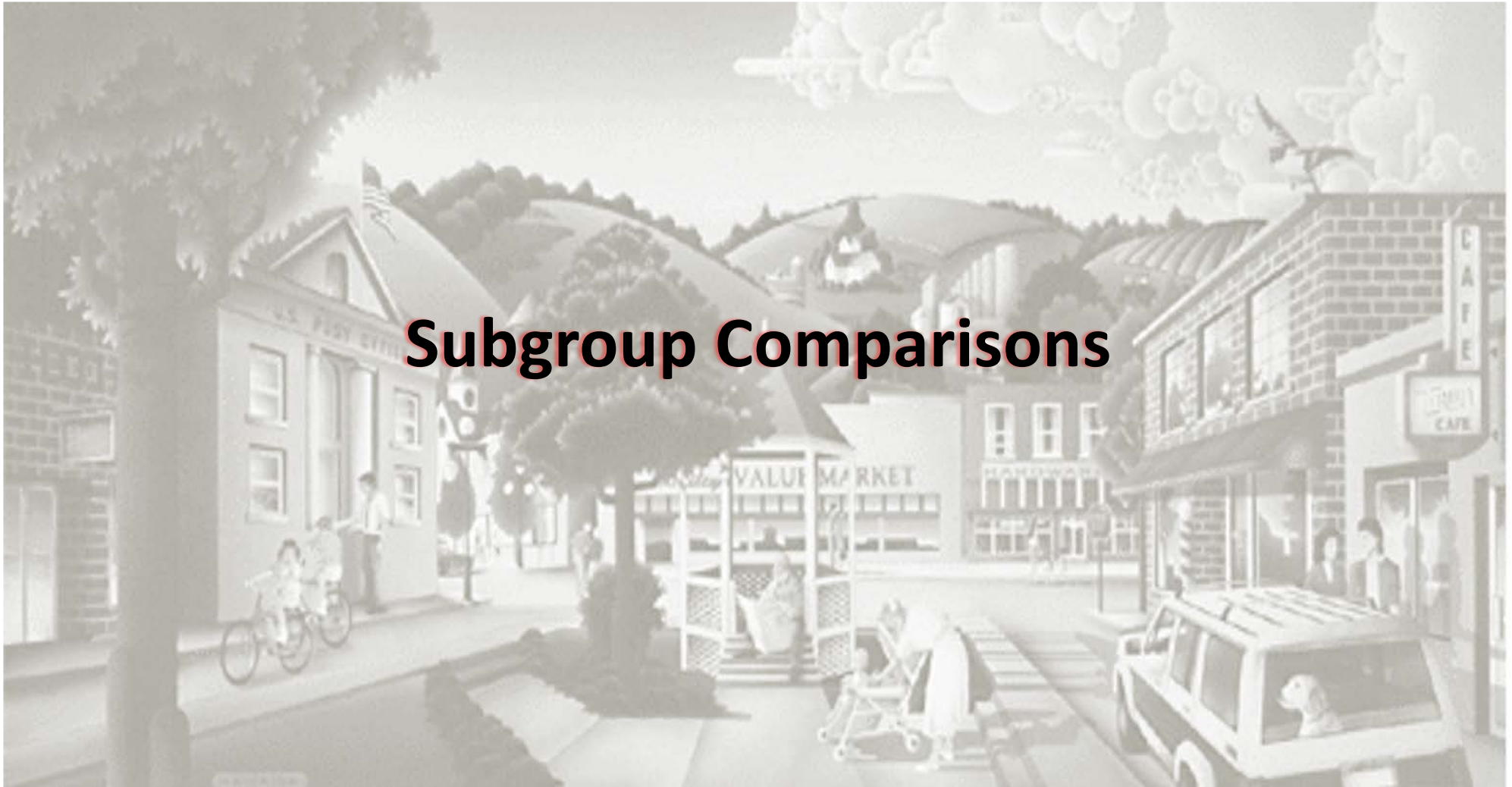
# Reported Level of Satisfaction with Social Services in Community: 1996 - 2019

## Percent Indicating "Satisfied" or "Very Satisfied"

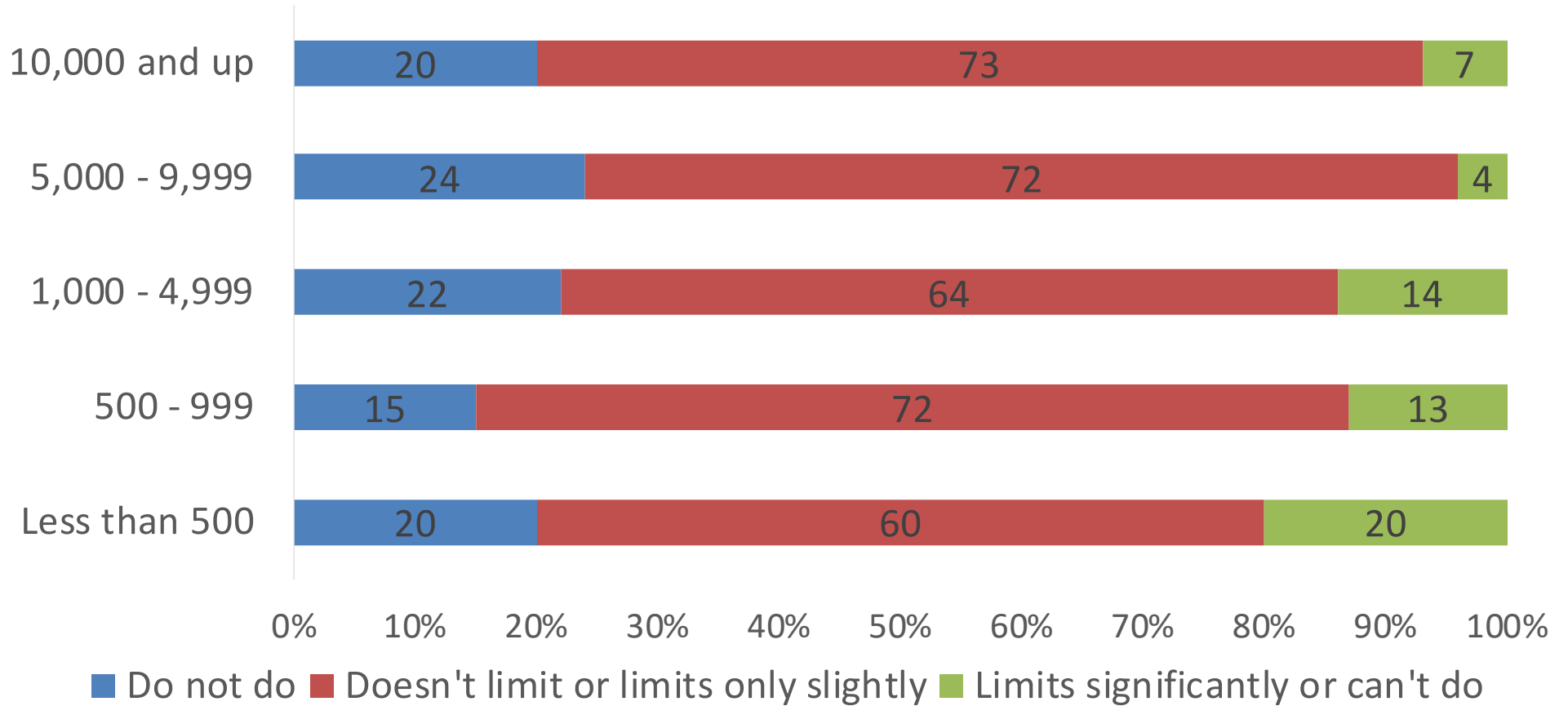




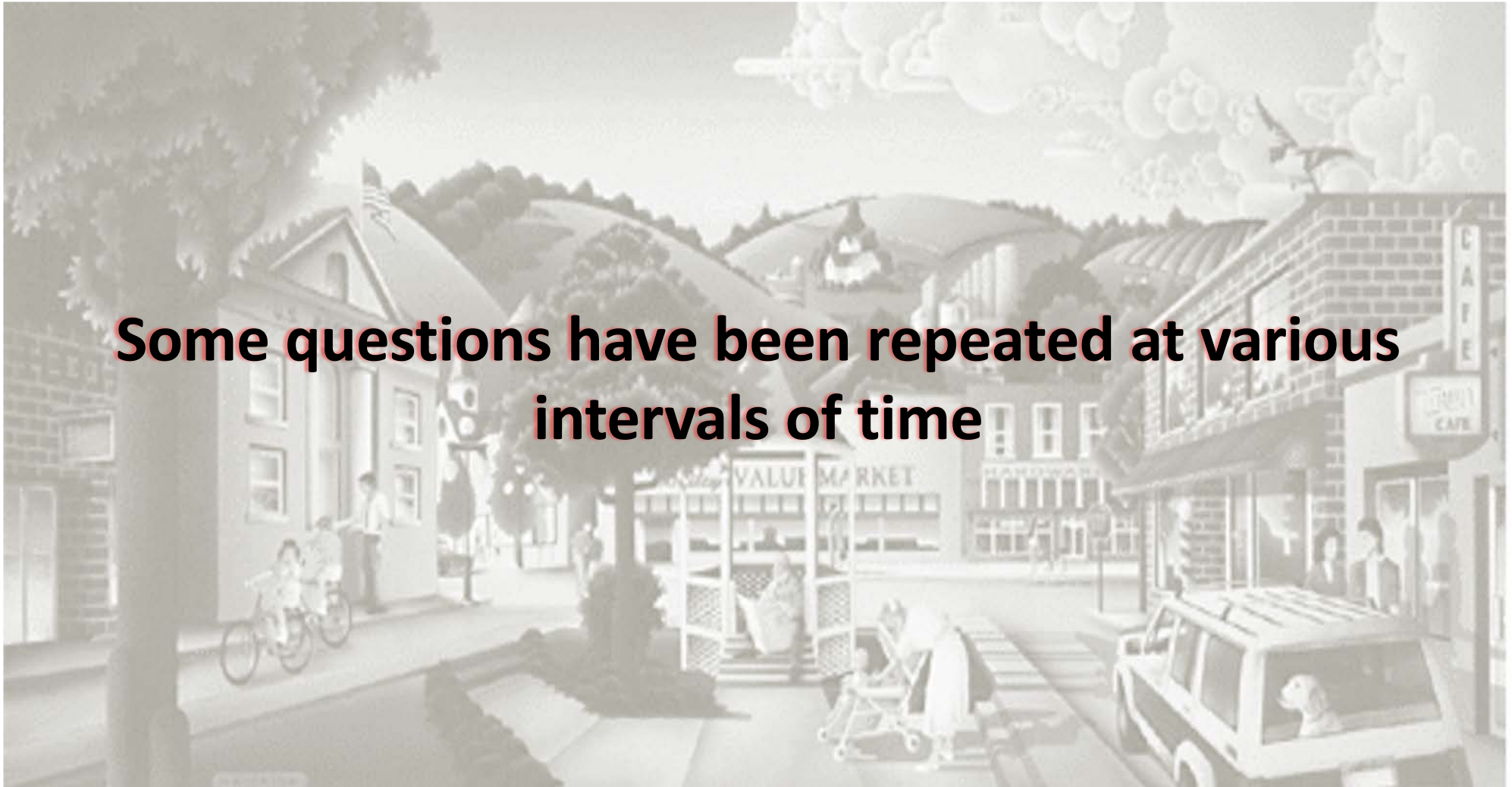
# Subgroup Comparisons



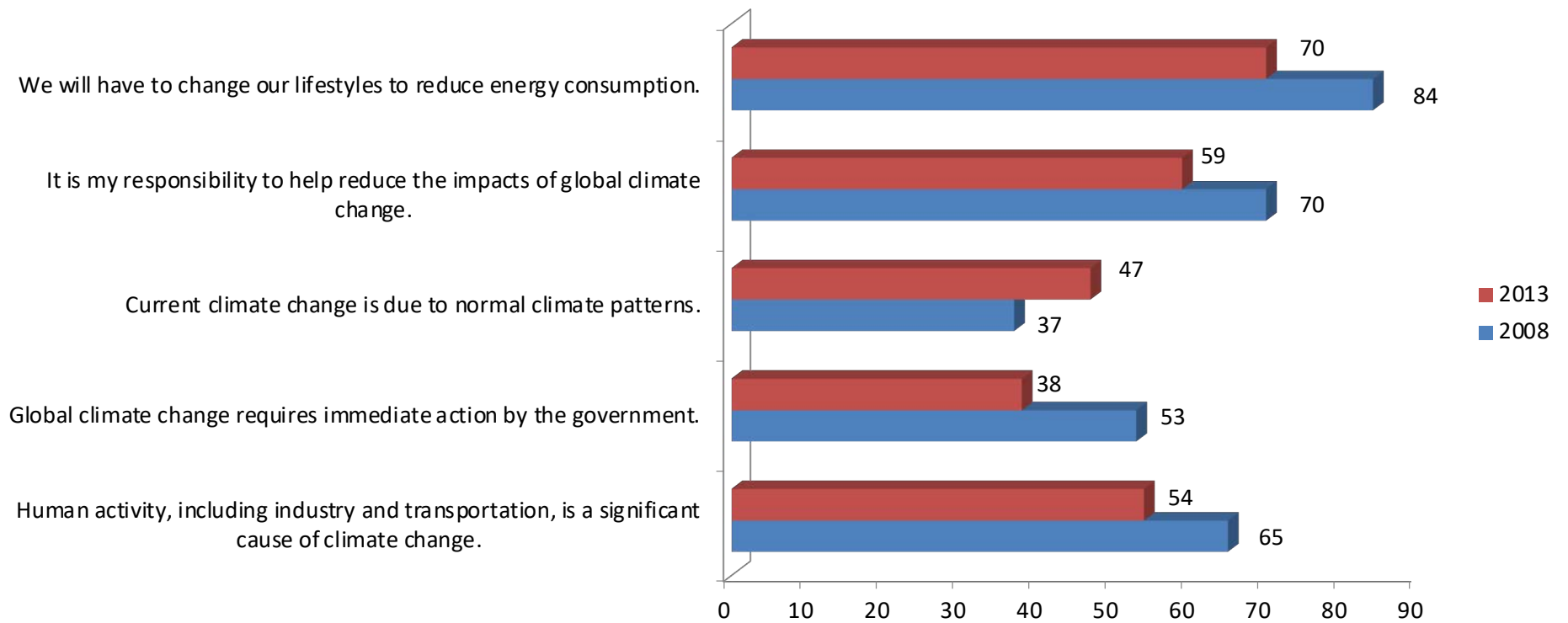
## How Internet Service Limits Ability to Stream Online Video Content by Community Size, 2018



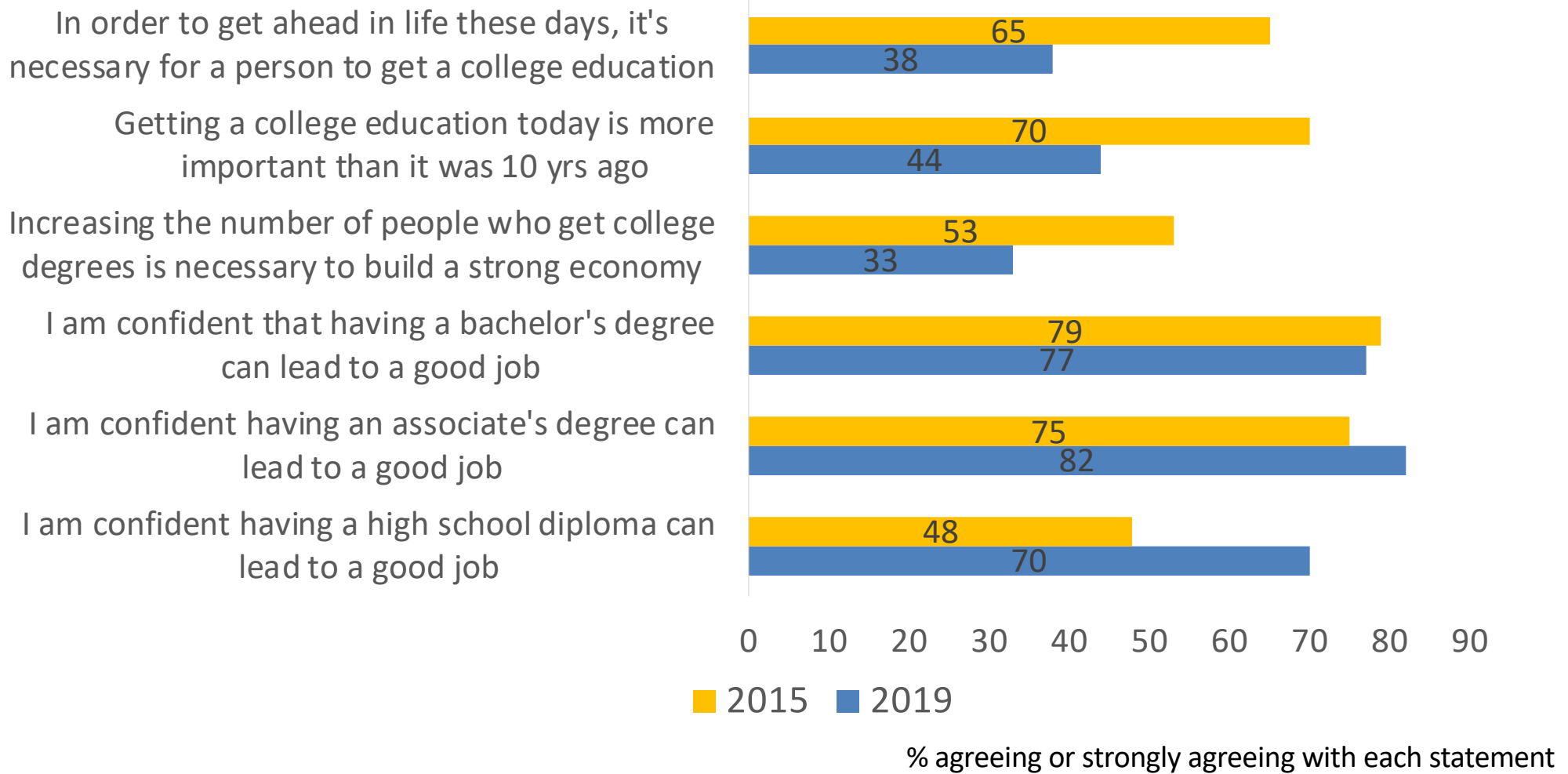
**Some questions have been repeated at various intervals of time**



# Changes in Opinions about Climate Change



## Opinions about Education, 2015 and 2019





**All Nebraska Rural Poll reports from 1996 through 2019 can be found as PDF files here:**

**<http://ruralpoll.unl.edu/>**

**Reports are available by year or by topics**

**For additional information regarding the Nebraska Rural Poll OR to suggest topics for future surveys, please contact any of the current Nebraska Rural Poll Team.**

**Rebecca Vogt**

[rvogt2@unl.edu](mailto:rvogt2@unl.edu)

**Cheryl Burkhart-Kriesel**

[cburkhartkriesel1@unl.edu](mailto:cburkhartkriesel1@unl.edu)

**Bradley Lubben**

[blubben2@unl.edu](mailto:blubben2@unl.edu)

**L.J. McElravy**

[lj.mcelravy@unl.edu](mailto:lj.mcelravy@unl.edu)

**Tim Meyer**

[tmeyer19@unl.edu](mailto:tmeyer19@unl.edu)

**Steve Schulz**

[sschulz@unomaha.edu](mailto:sschulz@unomaha.edu)

**Jason Weigle**

[jason.weigle@unl.edu](mailto:jason.weigle@unl.edu)



Supported by: Nebraska Extension, Nebraska Rural Futures Institute, UNL Department of Agricultural Economics.