

See discussions, stats, and author profiles for this publication at: <https://www.researchgate.net/publication/320413759>

Endo-lysosomal dysfunction: a converging mechanism in neurodegenerative diseases

Article in *Current opinion in neurobiology* · October 2017

DOI: 10.1016/j.conb.2017.09.005

CITATIONS

6

READS

11

5 authors, including:



Maria Telpoukhovskaia

Gladstone Institutes

13 PUBLICATIONS 303 CITATIONS

SEE PROFILE



Ben A Bahr

University of North Carolina at Pembroke

164 PUBLICATIONS 10,775 CITATIONS

SEE PROFILE



Xu Chen

Gladstone Institutes

10 PUBLICATIONS 145 CITATIONS

SEE PROFILE

Some of the authors of this publication are also working on these related projects:



The Chemical Mechanism of Hen Egg-white Lysozyme [View project](#)



blast wave effects on neuron cells [View project](#)

All content following this page was uploaded by [Xu Chen](#) on 01 March 2018.

The user has requested enhancement of the downloaded file.



Endo-lysosomal dysfunction: a converging mechanism in neurodegenerative diseases

Chao Wang^{1,2}, Maria A Telpoukhovskaia^{1,2}, Ben A Bahr³,
Xu Chen^{1,2} and Li Gan^{1,2}

Endo-lysosomal pathways are essential in maintaining protein homeostasis in the cell. Numerous genes in the endo-lysosomal pathways have been found to associate with neurodegenerative diseases, including Alzheimer's disease (AD), Parkinson's disease (PD), and frontotemporal dementia (FTD). Mutations of these genes lead to dysfunction in multiple steps of the endo-lysosomal network: autophagy, endocytic trafficking and lysosomal degradation, resulting in accumulation of pathogenic proteins. Although the exact pathogenic mechanism varies for different disease-associated genes, dysfunction of the endo-lysosomal pathways represents a converging mechanism shared by these diseases. Therefore, strategies that correct or compensate for endo-lysosomal dysfunction may be promising therapeutic approaches to treat neurodegenerative diseases.

Addresses

¹ Gladstone Institute of Neurological Disease, Gladstone Institutes, San Francisco, CA 94158, USA

² Department of Neurology, University of California, San Francisco, San Francisco, CA 94158, USA

³ Biotechnology Research and Training Center, University of North Carolina at Pembroke, Pembroke, NC, USA

Corresponding authors: Chen, Xu (xu.chen@gladstone.ucsf.edu), Gan, Li (li.gan@gladstone.ucsf.edu)

Current Opinion in Neurobiology 2018, 48:52–58

This review comes from a themed issue on **Neurobiology of disease**

Edited by **Anatol Kreitzer** and **Claudia Bagni**

<http://dx.doi.org/10.1016/j.conb.2017.09.005>

0959-4388/© 2017 Published by Elsevier Ltd.

Introduction

Neurodegenerative diseases are often characterized by intracellular protein inclusions or extracellular protein aggregates. Failure of proper trafficking and degradation of these proteins could underlie neuronal and network dysfunction in these diseases. The lysosome system is one of the major cellular mechanisms for protein degradation, especially in long-lived, post-mitotic cells, such as neurons. Lysosomes serve as the hub for proteostasis (Figure 1). Protein substrates of extracellular and

intracellular origin are delivered to lysosome through endocytic trafficking and autophagic pathways, respectively. Complex cross talk between these trafficking systems ensures proper sorting and degradation of the substrates. Dysfunction of various steps in this network can lead to insufficient clearance of pathogenic proteins, impaired membrane trafficking and signaling, and damage to the cell. Numerous studies in human genetics and model organisms support critical roles of lysosomal dysfunction in neurodegeneration. In this review, we focus on the role of endo-lysosomal dysfunction in three of the most common and devastating neurodegenerative diseases: Alzheimer's disease (AD), Parkinson's disease (PD) and frontotemporal dementia (FTD).

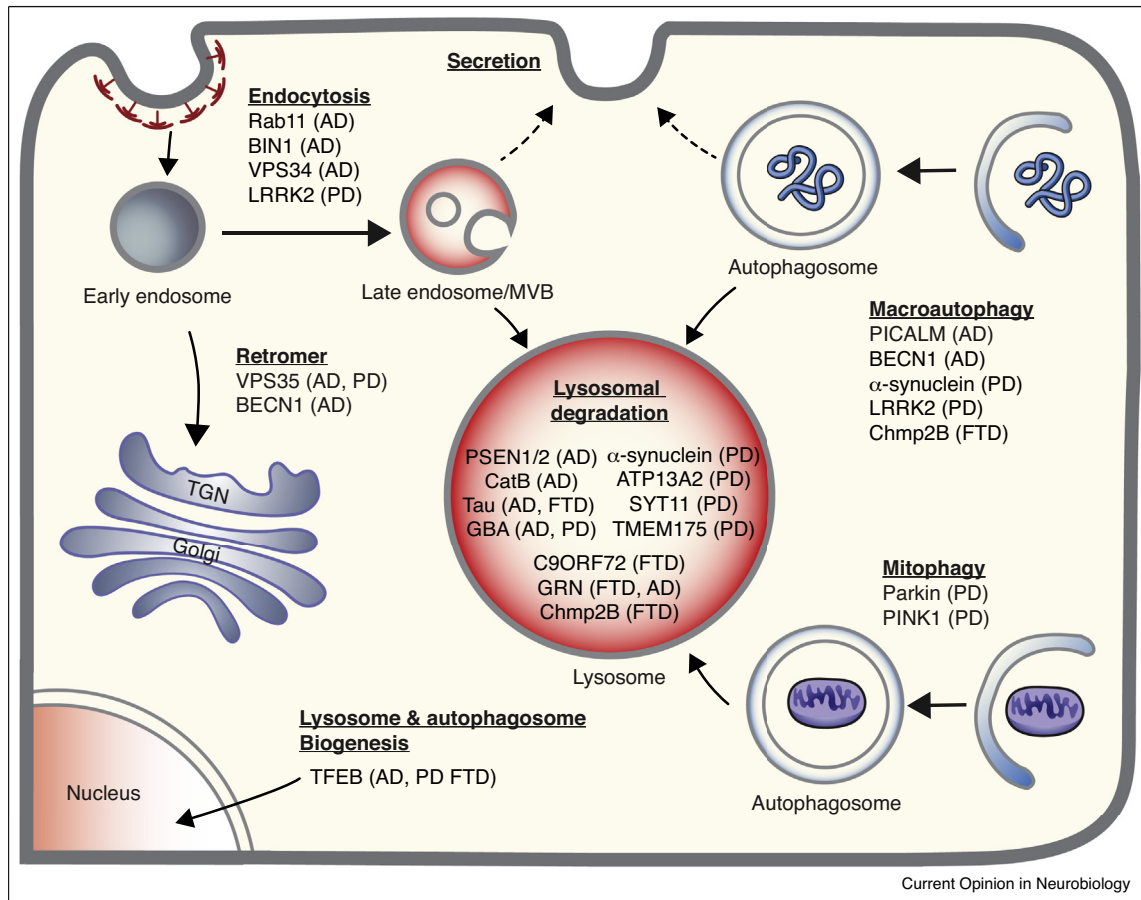
Alzheimer's disease

AD, the most common dementia, is characterized by extracellular amyloid- β (A β) plaques and neurofibrillary tangles (NFT), consisting of hyperphosphorylated tau. The endo-lysosomal and autophagic networks are critical to maintain the homeostasis of A β and tau. Dysfunctions of this network are common in AD and result in abnormal lysosomal enzymatic activity and accumulation of autophagosomes and autolysosomes in the dystrophic neurites in AD brains [1]. More importantly, both familial mutations and polymorphisms associated with late onset sporadic AD are linked with autophagic and endo-lysosomal dysfunctions (Figure 1).

Mutations in presenilins 1 and 2 (PS1, 2), the proteases of the γ -secretase complex, cause rare early-onset familial cases of AD (FAD). Most FAD-linked mutations of PS1 and PS2 increase the production of A β 42, supporting amyloid hypothesis. However, PS1 also appears to regulate autophagic-lysosomal function, resulting in alterations in the hydrolysis of amyloid precursor protein (APP). *PS1* mutations or knockout (KO) cause v-ATPase V0a1 subunit deficiency and disruption of lysosomal acidification, leading to abnormal Ca²⁺ homeostasis and defective autophagy [2^{*}]. PS2 localizes to late endosomes/lysosomes and produces a distinct intracellular pool of A β [3^{*}]. FAD mutations in *PS2* increase A β production, and some *PS1* mutations phenocopy the late endosome/lysosome location of PS2 [3^{*}].

Recent genome-wide association studies (GWAS) further highlighted the importance of autophagic-lysosomal function in AD pathogenesis [4]. The risk factors include

Figure 1



Overview of the endo-lysosomal system involved in pathogenesis of AD, PD and FTD. Lysosomes receive inputs from both the endocytic pathway and autophagic pathway, delivering protein substrates from extracellular environment and intracellular compartment, respectively. Proteins undergoing clathrin-mediated endocytosis are enclosed by early endosomes, where they are sorted to trans-Golgi network (TGN) by retromers, or to the late endosomes/multivesicular body (MVB), which fuses with lysosome for degradation. Cytosolic protein substrates are engulfed by double-membrane phagophore, which becomes an autophagosome, and delivered to lysosome. Autophagy is also responsible for degradation of damaged organelles, such as mitochondria (mitophagy). TFEB, a master regulator of the biogenesis of lysosomes and autophagosomes, is translocated from the cytosol to nucleus in response to mTORC inactivation (e.g. nutrient starvation), leading to increased transcription of autophagic and lysosomal genes. Vesicles in the endo-lysosomal system could fuse with plasma membrane and release the undegraded substrates, leading to secretion of the pathogenic proteins (dash arrow). Causative genes and risk factors in AD, PD and FTD that are involved in the endo-lysosomal dysfunction are indicated.

genes related to autophagic initiation and early autophagosome formation, such as phosphatidylinositol-binding clathrin assembly protein (*PICALM*), a key component of clathrin-mediated endocytosis machinery. Altered *PICALM* protein levels were observed in late-onset AD brains and are closely related to tau pathology [5,6]. mRNA and protein levels of beclin 1 (*BECN1*), a key component of autophagy biogenesis, are reduced in AD brains [7]. *BECN1* was also reduced in microglia from AD patients, which are associated with reduced retromer trafficking, suggesting deficits in receptor-mediated $A\beta$ phagocytosis [8]. Besides $A\beta$ degradation, autophagy might also be involved secretion of $A\beta$ to the extracellular space and may contribute to plaque formation [9].

AD-associated genetic variations also contribute to abnormal sorting and trafficking in endo-lysosomal networks. Deletion of bridging integrator 1 (*BIN1*), a genetic risk factor of late-onset AD, increases cellular β -secretase (*BACE1*) levels by impairing its lysosomal degradation, leading to increased $A\beta$ production [10]. Rab11, a component that regulates membrane trafficking, controls *BACE1* recycling to the plasma membrane and is a genetic factor involved in late-onset AD [11]. Endosomal trafficking is largely controlled by phosphatidylinositol-3-phosphate (PI3P), and deficiency of PI3P (caused by *VPS34* reduction) reduces sorting of APP to intraluminal vesicles and contributes to AD [12]. The optimal pH of early endosome for *BACE1* makes the endosome the

predominant location for beta cleavage of APP, whereas APP delivered to lysosome is rapidly degraded. Deletion of components of endosomal sorting complexes required for transport (ESCRT) inhibited delivery of APP to lysosome and increased A β accumulation [13]. On the other hand, enhancing lysosome biogenesis through targeting transcription factor EB (TFEB), a master regulator of lysosome biogenesis and a substrate of mTOR, reduced steady state APP levels and amyloid deposits in APP/PS1 mice [14], and ameliorated neurofibrillary tangle pathology in rTg4510 tauopathy model [15].

AD brains have altered lysosomal protein levels and enzymatic activity, some of which are directly involved in A β degradation. Increased lysosomal activities of β -hexosaminidase and β -galactosidase were found in the cortex of the TgCRND8 mouse model as the disease progresses and were associated with synapses loss [16]. The protein level and enzymatic activity of lysosomal enzyme glucocerebrosidase (GBA) are significantly reduced in sporadic AD [17]. Overexpression of GBA promotes A β 42 degradation and protects against A β 42 induced toxicity [17]. Cathepsin B (CatB), a lysosomal cysteine protease, degrades A β 42 [18–20]. CatB activity has also been linked to the clearance of tau species [21]. A progressive, age-dependent reduction of CatB activity was observed in an APP/PS1 AD mouse model [22]. Loss of CatB in culture cell results in accumulation of BACE1, β CTF and A β , together with cholesterol and other lysosomal proteins [23]. Genetic deletion of the endogenous inhibitors of lysosomal cysteine proteases leads to cathepsin-dependent amelioration of amyloid pathologies [19,24,25]. Moreover, increasing CatB expression through AAV reduces A β and rescues AD-associated memory deficits [26]. Interestingly, exercise elevates CatB levels in monkeys and humans, and those levels correlated with improvements in the type of memory encoding lost in AD [27].

Parkinson's disease

PD is the second most common late-onset neurodegenerative disease and is characterized by an accumulation of α -synuclein and mitochondrial dysfunction. Increasing evidence from genetics and model systems indicates that intracellular trafficking and endo-lysosomal/autophagic dysfunction is the primary cause in PD [28].

PTEN-induced putative kinase 1 (PINK1) and parkin, two key components for mitophagy, are associated with autosomal recessive parkinsonism, providing compelling evidence that autophagy dysfunction has a key role in PD [29]. α -Synuclein is not only a substrate of autophagy, but also a regulator of autophagic network. Overexpressing α -synuclein causes mislocalization of the autophagosome formation protein Atg9 and impairs macroautophagy [30]. Mutations in the leucine-rich repeat kinase 2 (*LRRK2*) are one of the most common causes of autosomal dominant PD. Although its exact effect is controversial, *LRRK2*

regulates autophagy. This regulation involves vesicle sorting, lysosome positioning and clustering, and interaction with Rab proteins, including Rab7, Rab5 and Rab32 [31–33]. PD-causing mutations in *LRRK2* (G2019S and R1441C) inhibit autophagy and accelerate age-related autophagy dysfunction, whereas wildtype *LRRK2* improved autophagy [34]. Mutations of late endosomal/lysosomal ATPase ATP13A2 (Park9) are associated with early-onset of PD [35,36]. ATP13A2 regulates autophagy by regulating another PD-associated gene synaptotagmin 11 (SYT11) [37]. In addition, altered autophagosome trafficking could lead to increased secretion of α -synuclein [38], suggesting a role of the autophagic-lysosomal system in the unconventional secretion of their protein substrates.

Lysosomal dysfunction has a prominent role in PD pathogenesis (Figure 1). α -Synuclein oligomeric intermediates are degraded by lysosomes [39]. Several lysosomal genes were identified as genetic risk factors for PD. Heterozygous mutations of glucocerebrosidase (GBA) are one of the most common risk factors for PD. About 10% PD patients carry *GBA* mutations (PD-GBA). Reduced GBA activity and impaired autophagic flux, together with accumulation of α -synuclein in lysosome, were found in neurons derived from induced pluripotent stem cells (iPSCs) carrying *GBA* mutations [40]. Consistently, activation of GBA by a small-molecule modulator or chaperone reduced α -synuclein levels and restored lysosomal function in iPSC-derived dopaminergic neurons, implicating that lysosomal enzyme is a viable target for PD treatment [41,42]. Human transmembrane protein 175 (*TMEM175*) gene, encoding a K⁺ channel located in late endosomes and lysosomes, was identified as a risk factor by a PD GWAS meta-analysis [43]. Deficiency of *TMEM175* resulted in unstable lysosomal pH, decreased GBA activity and mitochondrial respiration, impaired autophagosome clearance and increased phosphorylated α -synuclein aggregates [44]. Deficiency or loss-of-function mutations of ATP13A2 result in impaired lysosomal acidification and degradation capacity, leading to accumulation of α -synuclein [45]. However, in an ATP13A2 KO mouse model, lysosomal and protein trafficking deficiency occurred without any α -synuclein abnormalities, suggesting the presence of α -synuclein-independent neurotoxicity induced by endo-lysosomal dysfunction in PD [46].

Dysfunction of endo-lysosomal sorting and trafficking also contributes to PD pathogenesis. α -Synuclein disrupts hydrolase trafficking and reduces lysosomal function, which can be rescued by expression of small GTPase Rab1a [47]. VPS35 is a component of retromer complex involved in endosome-lysosome sorting and trafficking. An autosomal-dominant PD-causing mutation in VPS35 implicated retromer dysfunction in familial PD [48]. Moreover, cells expressing mutated VPS35 (D620N) show Atg9 mislocalization and impaired macroautophagy

[49], suggesting that VPS35 links retromer complex to other trafficking machinery.

Frontotemporal dementia

FTD is the second most common cause of dementia in people under 65 years old. Pathologically, major FTD variants include inclusions of microtubule-associated protein tau or the TAR DNA-binding protein (TDP)-43, named FTLD-tau and FTLD-TDP, accordingly. FTD mutations of tau lead to increased tau accumulation and aggregation, where autophagic dysfunction plays an important role. Blocking autophagy increases tau accumulation [50], while enhancing autophagy lowers the levels of total and phosphorylated tau [51–53]. Phosphorylated tau linked to A β 42 treatment was also found to be reduced through enhancement of the autophagy-lysosomal pathway [54], from a study that implicates lysosomal cross talk with the proteasomal protein clearance system. Besides tau degradation, it is speculated that autophagy could be involved in release of tau through a process called unconventional secretion [55], although exact mechanism is unknown. TDP-43 inclusions are found in about 45–60% of all FTLD cases. Stimulation of the autophagy pathway enhances the TDP-43 clearance, and therefore, the survival of mouse neurons [56]. Thus, autophagy might play a role in the degradation of aggregated TDP-43.

Up to 50% of FTD cases are genetic, associated with causative mutations (e.g. C9orf72, GRN) or risk factors (e.g. TMEM106B), many of which are genes involved in endo-lysosomal system. Other rare mutations in FTLD-causing genes, namely valosin-containing protein (VCP)/p97, charged multivesicular body protein 2B (CHMP2B), optineurin (OPTN), TANK binding protein 1 (TBK1), SQSTM1/p62 and ubiquilin 2 (UBQLN2) affect proteins that are directly involved in protein degradation, especially in autophagy-lysosome pathways.

C-Terminal truncations in CHMP2B are a rare genetic cause of FTD, identified in two European families. CHMP2B is part of ESCRT-III, a multiprotein complex involved in the endo-lysosome pathway. Patients with this mutation show ubiquitin and p62 inclusions in the dentate gyrus, and enlarged vacuoles in cortical neurons resembling late endosomes [57], pointing to defects in the endo-lysosomal pathway. CHMP2B dysfunction is also linked to impaired autophagosome formation and accumulation of protein aggregates [58]. Mice expressing CHMP2B_{Intron5} developed large and dense autofluorescent aggregates in several brain regions (90% of microglia and over 50% of neurons) by 18 months of age [59]. Likewise, FTD patients have a significant amount of autofluorescent deposits in brain [59]. Moreover, iPSC-derived neurons from patients with CHMP2B mutation have enlarged endosomes that can be reverted in the

CRISPR/Cas9-edited isogenic control [60^{*}], demonstrating a causative role of CHMP2B mutation in FTD.

C9orf72 mutations with GGGGCC repeat expansion in the non-coding region account for more than 20% of familial FTD. Pathogenic mechanisms of these mutations include a toxic gain of function and lysosomal dysfunction. C9orf72 localizes to the lysosomes under starvation conditions in HEK cells [61], implicating its involvement in autophagy. C9orf72 KO leads to lysosomes enlargement and redistribution in HeLa cell [61], and accumulation of vesicles in mouse bone marrow-derived macrophages and microglia [62^{**}]. The mechanism underlying the lysosomal dysfunction in C9orf72 deficiency has been connected to TFEB, the master regulator of lysosome biogenesis. Under starvation conditions, C9orf72 KO MEFs show increased TFEB expression in response to mTOR inactivation [63]. Likewise, brain homogenates from C9orf72 KO mice had increased numbers of TFEB and the lysosomal markers, Lamp1 and Lamp2 [63]. Fibroblasts from patients with C9orf72 mutation had fewer endosomes and a different expression pattern of mannose 6-phosphate receptor (M6PR), hinting at disruption of endo-lysosomal pathway [64].

Another major cause of familial FTLD-TDP is mutations on progranulin (GRN, PGRN), which lead to nonsense-mediated decay and PGRN haploinsufficiency. Interestingly, a homozygous GRN loss-of-function mutation causes adult-onset neuronal ceroid lipofuscinosis, but results in FTLD-TDP when in a heterozygous state. Further supporting critical role of PGRN in lysosomal function, PGRN knockout mice exhibit striking lipofuscinosis and intracellular PGRN is highly enriched in the lysosomes. Expressed by microglia and neurons, PGRN is involved in the lysosomal and inflammatory pathways in the brain. PGRN KO leads to upregulation of lysosomal and innate immunity genes, increased complement production, and enhanced synaptic pruning in microglia [65^{*}]. While lysosome biogenesis and microglial activation were evident, lysosomal degradation was compromised in glia and neurons [66]. A recent study showed that FTD patients with PGRN haploinsufficiency exhibit lysosomal dysfunction and a mild form of NCL [67^{**}]. Lysosomal protease is impaired in FTD patient-derived fibroblasts [67^{**}], and retinal scanning revealed preclinical retinal lipofuscinosis in heterozygous GRN mutation carriers [67^{**}]. These findings provide evidence that lysosomal dysfunction induced by PGRN haploinsufficiency could underlie the pathogenesis of FTLD-TDP [67^{**}].

Conclusion

Accumulating genetic evidence from GWAS has pointed to a critical role for the endo-lysosomal network in neurodegenerative diseases. Dysfunction of these genes and their pathways converges on impaired lysosomal

degradation, leading to accumulation of pathogenic proteins. Besides, accumulation of intermediate vesicles containing undegraded proteins might lead to increased secretion and propagation of the pathogenic proteins, although the molecular mechanism remains elusive. Therapeutically, those disease-associated genes and their interacting components in the endo-lysosomal pathway could be targets for interventions. Several studies have shown therapeutic potentials from various aspects in the endo-lysosomal system, through increasing autophagic/lysosomal biogenesis (e.g. TFEB), promoting vesicular trafficking (e.g. Rab11, Chmp2B), and enhancing lysosomal degradation (e.g. GBA, CatB). On the other hand, deficits in components of endo-lysosomal and autophagic networks can serve as biomarkers for disease diagnosis. As we gain a more complete understanding of the molecular mechanisms underlying these pathways, more therapeutic targets and strategies will be revealed for treating these disorders.

Conflict of interest statement

Dr. Bahr is co-inventor on U.S. Patent 8,163,953 (Compounds for lysosomal modulation and methods of use) and on pending patents on compounds for treating Alzheimer's disease, mild cognitive impairment, and α -synucleinopathies.

Acknowledgements

Authors would like to thank Gary Howard to editorial assistance. The work is partially supported by NIH (R01AG051390 and U54NS100717 to L.G.); Consortium for Frontotemporal dementia (to L.G.); Rainwater Foundation (to L.G.); Bluefield fellowship (to M.T.), NIH (K99 AG053439) to X.C., and the CART Organization (B.A.B.).

References and recommended reading

Papers of particular interest, published within the period of review, have been highlighted as:

- of special interest
 - of outstanding interest
1. Whyte LS, Lau AA, Hemsley KM, Hopwood JJ, Sargeant TJ: **Endo-lysosomal and autophagic dysfunction: a driving factor in Alzheimer's disease?** *J Neurochem* 2017, **140**:703-717.
 2. Lee JH *et al.*: **Presenilin 1 maintains lysosomal Ca(2+) homeostasis via TRPML1 by regulating vATPase-mediated lysosome acidification.** *Cell Rep* 2015, **12**:1430-1444.
This study linked abnormal Ca²⁺ homeostasis and lysosomal proteolysis deficit, two AD-related pathogenic processes, with failure of lysosomal acidification in presenilin 1 loss-of-function status. Restoring normal lysosomal pH rescued both defects, indicating vATPase deficiency is a common underlying mechanism and potential therapeutic target.
 3. Sannerud R *et al.*: **Restricted location of PSEN2/gamma-secretase determines substrate specificity and generates an intracellular Abeta pool.** *Cell* 2016, **166**:193-208.
This study showed that PSEN2 selectively cleaves late endosomal/lysosomal localized substrates and generates intracellular A β that contains longer A β preferentially. In addition, familial AD (FAD)-associated mutations in PSEN2 increased the levels of longer A β further. A subset of FAD mutants in PSEN1 exhibited a shift of localization to late endosomes/lysosomes, leading to enhanced generation of aggregation-prone A β 42 in intracellular acidic compartments.
 4. Jun G *et al.*: **Meta-analysis confirms CR1, CLU, and PICALM as Alzheimer disease risk loci and reveals interactions with APOE genotypes.** *Arch Neurol* 2010, **67**:1473-1484.
 5. Ando K *et al.*: **Clathrin adaptor CALM/PICALM is associated with neurofibrillary tangles and is cleaved in Alzheimer's brains.** *Acta Neuropathol* 2013, **125**:861-878.
 6. Ando K *et al.*: **Level of PICALM, a key component of clathrin-mediated endocytosis, is correlated with levels of phosphotau and autophagy-related proteins and is associated with tau inclusions in AD, PSP and Pick disease.** *Neurobiol Dis* 2016, **94**:32-43.
 7. Pickford F *et al.*: **The autophagy-related protein beclin 1 shows reduced expression in early Alzheimer disease and regulates amyloid beta accumulation in mice.** *J Clin Invest* 2008, **118**:2190-2199.
 8. Lucin KM *et al.*: **Microglial beclin 1 regulates retromer trafficking and phagocytosis and is impaired in Alzheimer's disease.** *Neuron* 2013, **79**:873-886.
 9. Nilsson P *et al.*: **Abeta secretion and plaque formation depend on autophagy.** *Cell Rep* 2013, **5**:61-69.
 10. Miyagawa T *et al.*: **BIN1 regulates BACE1 intracellular trafficking and amyloid-beta production.** *Hum Mol Genet* 2016, **25**:2948-2958.
 11. Udayar V *et al.*: **A paired RNAi and RabGAP overexpression screen identifies Rab11 as a regulator of beta-amyloid production.** *Cell Rep* 2013, **5**:1536-1551.
 12. Morel E *et al.*: **Phosphatidylinositol-3-phosphate regulates sorting and processing of amyloid precursor protein through the endosomal system.** *Nat Commun* 2013, **4**:2250.
 13. Edgar JR, Willen K, Gouras GK, Futter CE: **ESCRTs regulate amyloid precursor protein sorting in multivesicular bodies and intracellular amyloid-beta accumulation.** *J Cell Sci* 2015, **128**:2520-2528.
 14. Xiao Q *et al.*: **Neuronal-targeted TFEB accelerates lysosomal degradation of APP, reducing Abeta generation and amyloid plaque pathogenesis.** *J Neurosci* 2015, **35**:12137-12151.
 15. Polito VA *et al.*: **Selective clearance of aberrant tau proteins and rescue of neurotoxicity by transcription factor EB.** *EMBO Mol Med* 2014, **6**:1142-1160.
 16. Magini A *et al.*: **Abnormal cortical lysosomal beta-hexosaminidase and beta-galactosidase activity at post-synaptic sites during Alzheimer's disease progression.** *Int J Biochem Cell Biol* 2015, **58**:62-70.
 17. Choi S *et al.*: **Lysosomal enzyme glucocerebrosidase protects against Abeta1-42 oligomer-induced neurotoxicity.** *PLOS ONE* 2015, **10**:e0143854.
 18. Mueller-Stieber S *et al.*: **Anti-amyloidogenic and neuroprotective functions of cathepsin B: implications for Alzheimer's disease.** *Neuron* 2006, **51**:703-714.
 19. Wang C, Sun B, Zhou Y, Grubb A, Gan L: **Cathepsin B degrades amyloid-beta in mice expressing wild-type human amyloid precursor protein.** *J Biol Chem* 2012, **287**:39834-39841.
 20. Butler D *et al.*: **Protective effects of positive lysosomal modulation in Alzheimer's disease transgenic mouse models.** *PLoS ONE* 2011, **6**:e20501.
 21. Bendiske J, Bahr BA: **Lysosomal activation is a compensatory response against protein accumulation and associated synaptopathogenesis — an approach for slowing Alzheimer disease?** *J Neuropathol Exp Neurol* 2003, **62**:451-463.
 22. Torres M *et al.*: **Defective lysosomal proteolysis and axonal transport are early pathogenic events that worsen with age leading to increased APP metabolism and synaptic Abeta in transgenic APP/PS1 hippocampus.** *Mol Neurodegener* 2012, **7**:59.
 23. Cermak S *et al.*: **Loss of cathepsin B and L leads to lysosomal dysfunction, NPC-like cholesterol sequestration and accumulation of the key Alzheimer's proteins.** *PLOS ONE* 2016, **11**:e0167428.
 24. Yang DS *et al.*: **Reversal of autophagy dysfunction in the TgCRND8 mouse model of Alzheimer's disease**

- ameliorates amyloid pathologies and memory deficits. *Brain* 2011, **134**:258-277.
25. Sun B *et al.*: **Cystatin C-cathepsin B axis regulates amyloid beta levels and associated neuronal deficits in an animal model of Alzheimer's disease.** *Neuron* 2008, **60**:247-257.
 26. Embury CM *et al.*: **Cathepsin B improves β -amyloidosis and learning and memory in models of Alzheimer's disease.** *J Neuroimmune Pharmacol* 2016.
 27. Moon HY *et al.*: **Running-induced systemic cathepsin B secretion is associated with memory function.** *Cell Metab* 2016, **24**:332-340.
 28. Beilina A, Cookson MR: **Genes associated with Parkinson's disease: regulation of autophagy and beyond.** *J Neurochem* 2016, **139**(Suppl. 1):91-107.
 29. Pickrell AM, Youle RJ: **The roles of PINK1, parkin, and mitochondrial fidelity in Parkinson's disease.** *Neuron* 2015, **85**:257-273.
 30. Winslow AR *et al.*: **Alpha-synuclein impairs macroautophagy: implications for Parkinson's disease.** *J Cell Biol* 2010, **190**:1023-1037.
 31. Waschbusch D *et al.*: **LRRK2 transport is regulated by its novel interacting partner Rab32.** *PLoS ONE* 2014, **9**:e111632.
 32. Heo HY, Kim KS, Seol W: **Coordinate regulation of neurite outgrowth by LRRK2 and its interactor, Rab5.** *Exp Neurobiol* 2010, **19**:97-105.
 33. Gomez-Suaga P *et al.*: **LRRK2 delays degradative receptor trafficking by impeding late endosomal budding through decreasing Rab7 activity.** *Hum Mol Genet* 2014, **23**:6779-6796.
 34. Saha S *et al.*: **Mutations in LRRK2 potentiate age-related impairment of autophagic flux.** *Mol Neurodegener* 2015, **10**:26.
 35. Malakouti-Nejad M *et al.*: **Identification of p.Gln858* in ATP13A2 in two EOPD patients and presentation of their clinical features.** *Neurosci Lett* 2014, **577**:106-111.
 36. Martino D *et al.*: **Juvenile dystonia-parkinsonism syndrome caused by a novel p.S941Tfs1X ATP13A2 (PARK9) mutation.** *Parkinsonism Relat Disord* 2015, **21**:1378-1380.
 37. Bento CF, Ashkenazi A, Jimenez-Sanchez M, Rubinsztein DC: **The Parkinson's disease-associated genes ATP13A2 and SYT11 regulate autophagy via a common pathway.** *Nat Commun* 2016, **7**:11803.
- This study provided the first evidence that the transcriptional and post-translational level of a rarely studied PD-associated gene SYT11 was negatively regulated by PD-associated ATPase ATP13A2. SYT11 overexpression rescued autophagy deficit caused by depletion of ATP13A2, suggesting a novel functional connection of these two genes in maintaining normal lysosomal function.
38. Ejlerskov P *et al.*: **Tubulin polymerization-promoting protein (TPPP/p25alpha) promotes unconventional secretion of alpha-synuclein through exophagy by impairing autophagosome-lysosome fusion.** *J Biol Chem* 2013, **288**:17313-17335.
 39. Lee HJ, Khoshaghidieh F, Patel S, Lee SJ: **Clearance of alpha-synuclein oligomeric intermediates via the lysosomal degradation pathway.** *J Neurosci* 2004, **24**:1888-1896.
 40. Schondorf DC *et al.*: **iPSC-derived neurons from GBA1-associated Parkinson's disease patients show autophagic defects and impaired calcium homeostasis.** *Nat Commun* 2014, **5**:4028.
 41. Mazzulli JR *et al.*: **Activation of beta-glucocerebrosidase reduces pathological alpha-synuclein and restores lysosomal function in Parkinson's patient midbrain neurons.** *J Neurosci* 2016, **36**:7693-7706.
 42. Aflaki E *et al.*: **A new glucocerebrosidase chaperone reduces alpha-synuclein and glycolipid levels in iPSC-derived dopaminergic neurons from patients with Gaucher disease and parkinsonism.** *J Neurosci* 2016, **36**:7441-7452.
 43. Nalls MA *et al.*: **Large-scale meta-analysis of genome-wide association data identifies six new risk loci for Parkinson's disease.** *Nat Genet* 2014, **46**:989-993.
 44. Jinn S *et al.*: **TMEM175 deficiency impairs lysosomal and mitochondrial function and increases alpha-synuclein aggregation.** *Proc Natl Acad Sci U S A* 2017, **114**:2389-2394.
- This study showed that TMEM175 deficiency, a potential risk factor for PD, results in unstable lysosomal pH, decreased lysosomal catalytic activity, decreased glucocerebrosidase activity, and impaired autophagosome clearance by the lysosome. Neurons deficient in TMEM175 exhibited increased phosphorylated and detergent-insoluble α -synuclein deposits, following α -synuclein fibril treatment. This study provided direct evidence that TMEM175 plays a direct and critical role in lysosomal and mitochondrial function and PD pathogenesis.
45. Dehay B *et al.*: **Loss of P-type ATPase ATP13A2/PARK9 function induces general lysosomal deficiency and leads to Parkinson disease neurodegeneration.** *Proc Natl Acad Sci U S A* 2012, **109**:9611-9616.
 46. Kett LR *et al.*: **Alpha-synuclein-independent histopathological and motor deficits in mice lacking the endolysosomal parkinsonism protein Atp13a2.** *J Neurosci* 2015, **35**:5724-5742.
 47. Mazzulli JR, Zunke F, Isacson O, Studer L, Krainc D: **Alpha-synuclein-induced lysosomal dysfunction occurs through disruptions in protein trafficking in human midbrain synucleinopathy models.** *Proc Natl Acad Sci U S A* 2016, **113**:1931-1936.
- This study established a linkage between α -synuclein accumulation and abnormal hydrolase trafficking in human midbrain dopamine neurons, suggesting a novel mechanism that affects lysosomal function in synucleinopathies. The rescue effect of overexpression of Rab1a, a key mediator of vesicular transport, indicated that hydrolase trafficking machinery might be a potential therapeutic targeting pathway.
48. Zimprich A *et al.*: **A mutation in VPS35, encoding a subunit of the retromer complex, causes late-onset Parkinson disease.** *Am J Hum Genet* 2011, **89**:168-175.
 49. Zavodszky E *et al.*: **Mutation in VPS35 associated with Parkinson's disease impairs WASH complex association and inhibits autophagy.** *Nat Commun* 2014, **5**:3828.
 50. Wang Y *et al.*: **Synergy and antagonism of macroautophagy and chaperone-mediated autophagy in a cell model of pathological tau aggregation.** *Autophagy* 2010, **6**:182-183.
 51. Congdon EE *et al.*: **Methylthioninium chloride (methylene blue) induces autophagy and attenuates tauopathy in vitro and in vivo.** *Autophagy* 2012, **8**:609-622.
 52. Ozcelik S *et al.*: **Rapamycin attenuates the progression of tau pathology in P301S tau transgenic mice.** *PLoS ONE* 2013, **8**:e62459.
 53. Schaeffer V *et al.*: **Stimulation of autophagy reduces neurodegeneration in a mouse model of human tauopathy.** *Brain* 2012, **135**:2169-2177.
 54. Farizatto KLG, Ikonne US, Almeida MF, Ferrari MFR, Bahr BA: **A β 42-mediated proteasome inhibition and associated tau pathology in hippocampus are governed by a lysosomal response involving cathepsin B: Evidence for protective crosstalk between protein clearance pathways.** *PLoS ONE* 2017, **12**:e0182895.
 55. Mohamed NV, Plouffe V, Remillard-Labrosse G, Planel E, Leclerc N: **Starvation and inhibition of lysosomal function increased tau secretion by primary cortical neurons.** *Sci Rep* 2014, **4**:5715.
 56. Barmada SJ *et al.*: **Autophagy induction enhances TDP43 turnover and survival in neuronal ALS models.** *Nat Chem Biol* 2014, **10**:677-685.
 57. Isaacs AM, Johannsen P, Holm I, Nielsen JE, consortium FR: **Frontotemporal dementia caused by CHMP2B mutations.** *Curr Alzheimer Res* 2011, **8**:246-251.
 58. Lee JA, Beigneux A, Ahmad ST, Young SG, Gao FB: **ESCRT-III dysfunction causes autophagosome accumulation and neurodegeneration.** *Curr Biol* 2007, **17**:1561-1567.

59. Clayton EL *et al.*: **Frontotemporal dementia caused by CHMP2B mutation is characterised by neuronal lysosomal storage pathology.** *Acta Neuropathol* 2015, **130**:511-523.
60. Zhang Y *et al.*: **Patient iPSC-derived neurons for disease modeling of frontotemporal dementia with mutation in CHMP2B.** *Stem Cell Rep* 2017, **8**:648-658.
 In this study, forebrain cortical neurons differentiated from iPSCs of patients with CHMP2B mutation were shown to have enlarged endosomes, mitochondrial abnormalities, and impaired iron homeostasis. Genetic correction using CRISPR/Cas9 editing reversed these phenotypes.
61. Amick J, Roczniak-Ferguson A, Ferguson SM: **C9orf72 binds SMCR8, localizes to lysosomes, and regulates mTORC1 signaling.** *Mol Biol Cell* 2016, **27**:3040-3051.
62. O'Rourke JG *et al.*: **C9orf72 is required for proper macrophage and microglial function in mice.** *Science* 2016, **351**:1324-1329.
 This paper shows that in a mouse model, C9orf72 is expressed mainly by microglia and myeloid cells, and that loss of C9orf72 affects endosomal/lysosomal trafficking and induces a pro-inflammatory state. Accumulation of material was observed in microglia of C9orf72 ALS patients, and sequencing studies revealed that C9orf72 ALS patients have upregulated inflammatory pathways.
63. Ugolino J *et al.*: **Loss of C9orf72 enhances autophagic activity via deregulated mTOR and TFEB signaling.** *PLoS Genet* 2016, **12**:e1006443.
64. Aoki Y *et al.*: **C9orf72 and RAB7L1 regulate vesicle trafficking in amyotrophic lateral sclerosis and frontotemporal dementia.** *Brain* 2017, **140**:887-897.
65. Lui H *et al.*: **Progranulin deficiency promotes circuit-specific synaptic pruning by microglia via complement activation.** *Cell* 2016, **165**:921-935.
 This article demonstrated that deficiency in frontotemporal dementia (FTD) gene progranulin (Grn) leads to an age-dependent, progressive upregulation of lysosomal and innate immunity genes. The study showed that deleting C1qa gene in Grn^{-/-} mice significantly reduces synaptic pruning and mitigates neurodegeneration, behavioral phenotypes, and premature mortality. The study linked activated microglia and elevated complement pathway with preferential elimination of inhibitory synapses in the ventral thalamus, which could explain the hyperexcitability in the thalamocortical circuits and obsessive-compulsive disorder (OCD)-like grooming behaviors in Grn^{-/-} mice.
66. Tanaka Y, Chambers JK, Matsuwaki T, Yamanouchi K, Nishihara M: **Possible involvement of lysosomal dysfunction in pathological changes of the brain in aged progranulin-deficient mice.** *Acta Neuropathol Commun* 2014, **2**:78.
67. Ward ME *et al.*: **Individuals with progranulin haploinsufficiency exhibit features of neuronal ceroid lipofuscinosis.** *Sci Transl Med* 2017, **9**.
 Authors demonstrate evidence of lysosomal dysfunction in the retina, lymphoblasts, and fibroblasts from living patients with progranulin mutations that cause frontotemporal dementia. Unprocessed storage material is present in neurons and microglia in brain sections of FTD patients. These findings place FTD on a spectrum with NCL (a neurological lysosomal storage disease), which is caused by complete loss of progranulin.