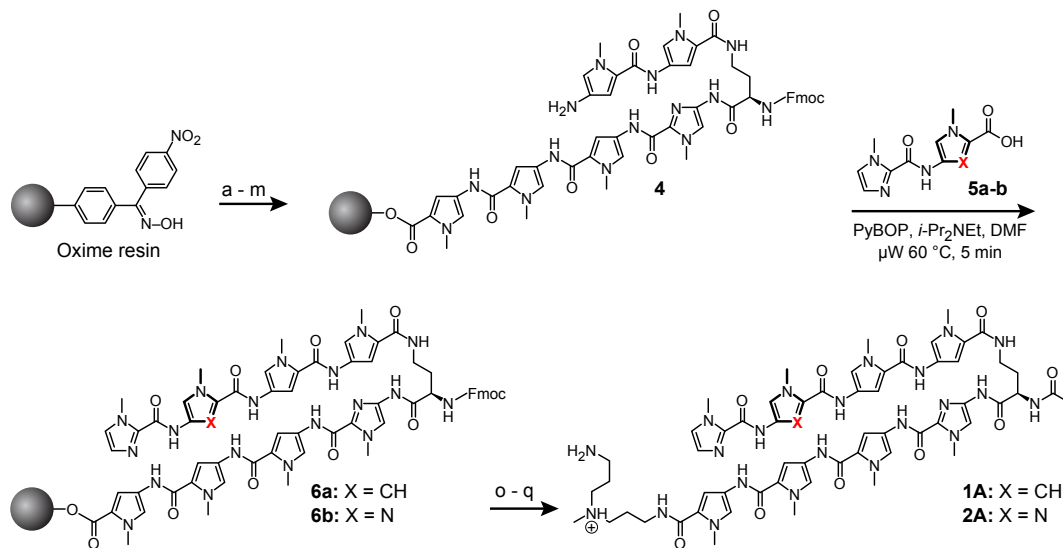
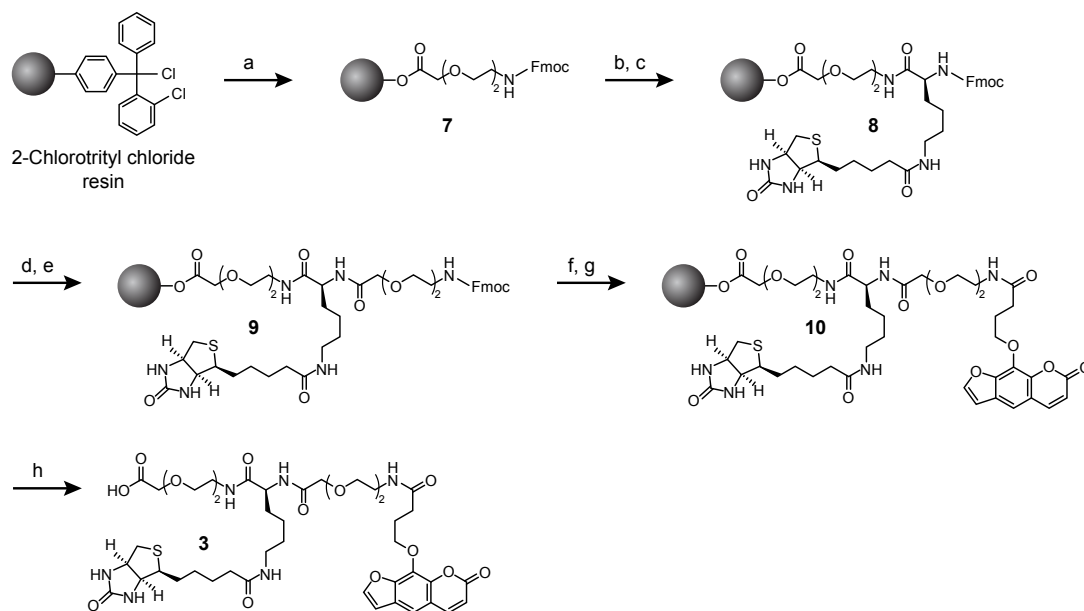
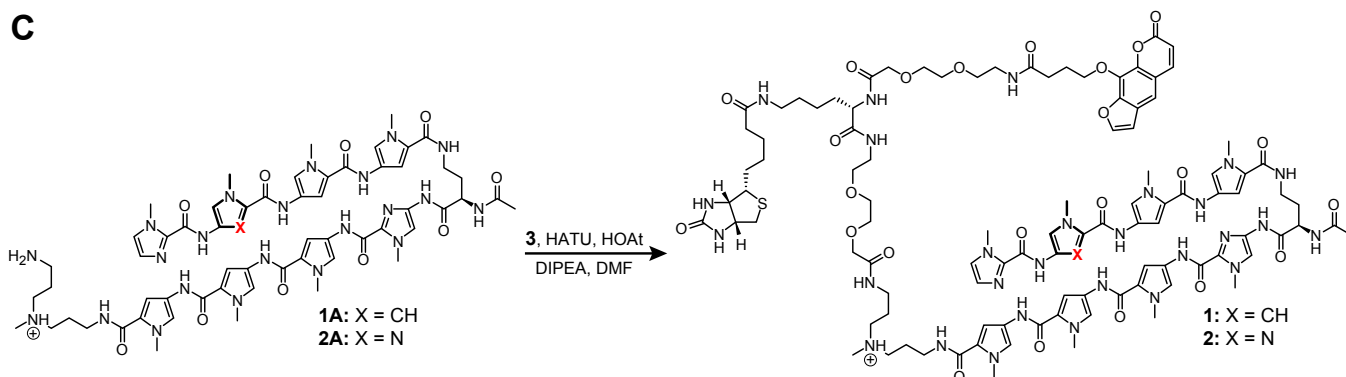
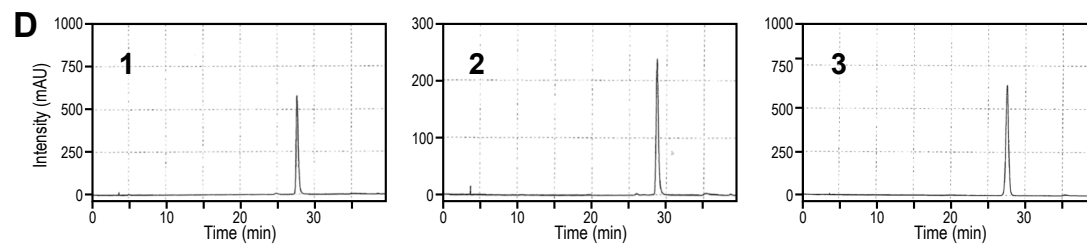


A**B****C**



E

Compound	Chemical Formula [M+H] ⁺	Calculated Mass [M+H] ⁺	Observed Mass [M+H] ⁺
1A	C ₅₉ H ₇₅ N ₂₂ O ₁₀	1251.60	1251.78
2A	C ₅₈ H ₇₄ N ₂₃ O ₁₀	1252.60	1252.75
1	C ₁₀₂ H ₁₃₃ N ₂₈ O ₂₄ S	2165.98	2166.26
2	C ₁₀₁ H ₁₃₂ N ₂₉ O ₂₄ S	2166.97	2167.23
3	C ₄₃ H ₆₁ N ₆ O ₁₅ S	933.39	933.36

