

Chapman University

Chapman University Digital Commons

ESI Publications

Economic Science Institute

10-7-2020

The Role of Dispersal and School Attendance on Reproductive Dynamics in Small, Dispersed Populations: *Choyeros* of Baja California Sur, Mexico

Shane Macfarlan

Ryan Schacht

Eric Schniter

Juan José Garcia

Diego Guevara Beltran

See next page for additional authors

Follow this and additional works at: https://digitalcommons.chapman.edu/esi_pubs



Part of the [Economic Theory Commons](#), and the [Other Economics Commons](#)

The Role of Dispersal and School Attendance on Reproductive Dynamics in Small, Dispersed Populations: *Choyeros* of Baja California Sur, Mexico

Comments

This article was originally published in *PLoS ONE*, volume 15, issue 10, in 2020. <https://doi.org/10.1371/journal.pone.0239523>

Creative Commons License



This work is licensed under a [Creative Commons Attribution 4.0 License](https://creativecommons.org/licenses/by/4.0/).

Copyright

The authors

Authors

Shane Macfarlan, Ryan Schacht, Eric Schniter, Juan José Garcia, Diego Guevara Beltran, and Jory Lerback

RESEARCH ARTICLE

The role of dispersal and school attendance on reproductive dynamics in small, dispersed populations: *Choyeros* of Baja California Sur, Mexico

Shane J. Macfarlan^{1,2,3*}, Ryan Schacht⁴, Eric Schniter^{5,6}, Juan José García⁷, Diego Guevara Beltran⁸, Jory Lerback⁹

1 Department of Anthropology, University of Utah, Salt Lake City, UT, United States of America, **2** Center for Latin American Studies, University of Utah, Salt Lake City, UT, United States of America, **3** Global Change and Sustainability Center, University of Utah, Salt Lake City, UT, United States of America, **4** Department of Anthropology, East Carolina University, Greenville, NC, United States of America, **5** Economic Science Institute, Chapman University, Orange, CA, United States of America, **6** School of Humanities & Social Science, Salt Lake Community College, Salt Lake City, UT, United States of America, **7** Department of Anthropology, California State University Fullerton, Fullerton, CA, United States of America, **8** Department of Psychology, Arizona State University, Tempe, AZ, United States of America, **9** Department of Geology & Geophysics, University of Utah, Salt Lake City, UT, United States of America

* shane.macfarlan@anthro.utah.edu



OPEN ACCESS

Citation: Macfarlan SJ, Schacht R, Schniter E, Garcia JJ, Guevara Beltran D, Lerback J (2020) The role of dispersal and school attendance on reproductive dynamics in small, dispersed populations: *Choyeros* of Baja California Sur, Mexico. PLoS ONE 15(10): e0239523. <https://doi.org/10.1371/journal.pone.0239523>

Editor: David W. Lawson, University of California Santa Barbara, UNITED STATES

Received: March 10, 2020

Accepted: September 8, 2020

Published: October 7, 2020

Peer Review History: PLOS recognizes the benefits of transparency in the peer review process; therefore, we enable the publication of all of the content of peer review and author responses alongside final, published articles. The editorial history of this article is available here: <https://doi.org/10.1371/journal.pone.0239523>

Copyright: © 2020 Macfarlan et al. This is an open access article distributed under the terms of the [Creative Commons Attribution License](https://creativecommons.org/licenses/by/4.0/), which permits unrestricted use, distribution, and reproduction in any medium, provided the original author and source are credited.

Data Availability Statement: All relevant data are within the paper and its Supporting Information files.

Abstract

Individuals from small populations face challenges to initiating reproduction because stochastic demographic processes create local mate scarcity. In response, flexible dispersal patterns that facilitate the movement of individuals across groups have been argued to reduce mate search costs and inbreeding depression. Furthermore, factors that aggregate dispersed peoples, such as rural schools, could lower mate search costs through expansion of mating markets. However, research suggests that dispersal and school attendance are costly to fertility, causing individuals to delay marriage and reproduction. Here, we investigate the role of dispersal and school attendance on marriage and reproductive outcomes using a sample of 54 married couples from four small, dispersed ranching communities in Baja California Sur, Mexico. Our analyses yield three sets of results that challenge conventional expectations. First, we find no evidence that dispersal is associated with later age at marriage or first reproduction for women. For men, dispersal is associated with younger ages of marriage than those who stay in their natal area. Second, in contrast to research suggesting that dispersal decreases inbreeding, we find that female dispersal is associated with an increase in genetic relatedness among marriage partners. This finding suggests that human dispersal promotes female social support from genetic kin in novel locales for raising offspring. Third, counter to typical results on the role of education on reproductive timing, school attendance is associated with younger age at marriage for men and younger age at first birth for women. While we temper causal interpretations and claims of generalizability beyond our study site given our small sample sizes (a feature of small populations), we nonetheless argue that factors like dispersal and school attendance, which are typically

Funding: SJM and ES (HJ-099R-17) National Geographic Society Research and Exploration Grant. SJM (subcontractor 1743019) National Science Foundation IBSS-L (PI Koster) https://www.nsf.gov/awardsearch/showAward?AWD_ID=1743019&HistoricalAwards=false. The funders had no role in study design, data collection and analysis, decision to publish, or preparation of the manuscript. In addition, this research was supported through the following sources: Funding Incentive Seed Grant (University of Utah), the Center for Latin American Studies (University of Utah), Society, Water, & Climate Seed Grant (University of Utah), Nexus Pilot Grant (University of Utah), Economic Science Institute (Chapman University), and the Division of Anthropology (California State University Fullerton).

Competing interests: The authors have declared that no competing interests exist.

associated with delayed reproduction in large population, may actually lower mate search costs in small, dispersed populations with minimal access to labor markets.

Introduction

Small populations are prone to stochastic demographic processes that can lead to a host of challenges for initiating reproduction [1–4]. For example, chance sex-biases in interannual birth or death rates can lead to highly variable adult sex ratios across time and place [5–8]. The consequences of partner unavailability are further intensified in small communities located in areas of low population densities (e.g., rural communities). Consequently, finding a mate who is sexually available and of low genetic relatedness can be difficult, if not impossible, within small groups. Revealing how individuals in small communities overcome the challenges of mate search and acquisition is important for understanding individual, family, and population health because partner availability has been shown to impact patterns of sexual risk-taking [9,10], pair-bond stability [11,12], parental investment [13], and violence [14–16]. Moreover, given that small communities (i.e., groups between 10–150 individuals; [17–19]) were typical throughout most of human history [20–22], understanding how individuals and groups cope with mate search will aid in reconstructing evolutionary patterns of human sociality [e.g. 8,23].

Local mate scarcity and other consequences of small populations are not unique to humans [4]. One solution across the animal kingdom to avoid inbreeding depression is dispersal [24–28]. The typical pattern across most sexually reproducing species is sex-specific dispersal [29–31]. However, while dispersal can assist in expanding an individual's mating market, it can also be costly. This has been well-documented across a wide range of animal species and includes, for example, loss of body mass, elevated stress levels, compromised immune functioning, and delayed reproduction [32–34]. Dispersal costs are multivariate, but for group-living species they are typically tied to reliance on social relationships for reproductive opportunities, protection, and resource provisioning [34]. Because dispersal requires individuals be removed from existing social support networks (either voluntarily or involuntarily) and travel to novel locales where they lack kin or alliance partners, individuals who disperse are expected to incur costs.

However, humans are distinctive from other group-living species in a number of ways. One hallmark characteristic is the dynamic nature of our social organization within and between groups [35–37]. Dispersal from the natal area is commonly observed cross-culturally, yet which sex leaves is highly variable [21,38]. While this flexibility has been argued by some to minimize the costs to dispersal (e.g., who disperses is responsive to local mate scarcity [8]), researchers commonly report costs sustained by the dispersing sex. For example, using historical datasets, delayed age at marriage and first reproduction among those who disperse are often found [39–42]. These costs, though, are typically reported for larger populations where partners are often available in the source population and so those who disperse do so under less than ideal conditions (e.g., local resource scarcity or economic hardship [43,44]). However, in small communities, few marriage options exist in the natal area and so dispersal may serve to hasten, rather than delay, the initiation of reproduction [*sensu* 45,46].

A second characteristic of the human niche is our ability to form long-term cooperative relationships to achieve individual and group-level goals [21,23]. While these high levels of cooperation are promoted by a number of mechanisms [47], genetic kinship appears to be foundational to human social organization [23,35,48–50] and especially relevant in modern

small-scale societies [36,37,51]. For example, as humans are a cooperatively breeding species [52–56], women are able to maintain multiple dependent offspring as well as a rapid reproductive pace compared to other apes because they receive allomaternal support, often from maternal genetic kin [48,56–58]. Furthermore, in many contexts, such as labor or social support, male-male coalitions appear to be predicated on genetic kinship [36,37,49,51,59]. However, this raises concerns for the costs of dispersal, because it risks removing individuals from vital support networks composed of genetic kin. Humans appear to have worked around this by way of a cross-culturally common pattern whereby social institutions facilitate the movement of genetic kin between communities through marriage to cousins or to more distantly related kin [60,61]. In this way, individuals who disperse, enter into households and communities where they are already embedded into local social support networks comprised of genetic kin [62]. Accordingly (and, to some extent, counterintuitively), human dispersal may occur in such a way not to dampen inbreeding depression per se but, rather, to *promote inbreeding*. We suggest that this pattern arises because social support networks composed of genetic kin are such an important determinant for achieving improved economic and/or reproductive outcomes in humans.

As outlined above, the role of dispersal on reproductive outcomes remains an open question. We target this lack of consensus in the literature by way of reproductive outcomes across several small communities where few to no partners are available locally because of the demographic realities of small groups. Accordingly, we expect that dispersal serves to lower the costs to initiating reproduction compared to those who stay in their natal area where partners are rare. Moreover, we expect that men and women who disperse will be more likely to marry kin than those who stay in their natal area.

Important to consider are additional drivers of human fertility that differ from other organisms, as well as our past, due to contemporary socioecological environments that are embedded within a larger regional or national economy [63,64]. State-sponsored structures are typically in place to support individual contribution to and competitiveness in economic markets [65]. While variable across place, a nearly ubiquitous feature of contemporary socioecological environments is access to formal education through compulsory school attendance [66]. A typical, yet seemingly unintended, consequence is that ages of marriage increase and fertility rates decrease with attending school [67,68]. One central explanatory framework for this relationship is Embodied Capital Theory [69]. For example, all individuals face reproductive tradeoffs and, with respect to education, individuals curtail investment in reproduction to increase their or their children's success in future reproduction by way of achieving competency within the economic environment. However, within small rural populations, formal education may be less useful for access to economic markets [70] and instead may be used to expand mating markets outside of one's natal area and gain access to state-sponsored resources (e.g. food, medical services). Thus, in addition to exploring the consequences and patterning of dispersal, we also seek to assess the role of school attendance on reproductive outcomes in small communities.

Below we examine the following questions about reproductive dynamics across four small communities from Baja California Sur, Mexico: 1) Do dispersal and school attendance decrease the age at marriage for men and women? 2) Does dispersal increase marriage partner genetic relatedness? 3) Do dispersal and education decrease the age at first reproduction for women? In sum, while dispersal and school attendance have typically been portrayed as costly to humans by way of fertility, this is likely relevant to large populations and not those typical of many contemporary small-scale groups, as well as for much of human history. Moreover, while dispersal is typically argued as a strategy for minimizing inbreeding depression,

marrying kin outside of the local group may instead serve to minimize reproductive costs by leveraging the support of pre-established social networks composed of genetic kin.

Materials and methods

Study site

The *Sierra de La Giganta* (hereafter “*Giganta*”) is Baja California Sur, Mexico’s largest mountain range, spanning ~150 km along a NW-SE axis with a total surface area of ~7,400 square kilometers [71]. Biogeographically, the *Giganta* is characterized as Sonoran Desert [72] with scrubland vegetation dominated by woody legumes [e.g., Palmer Mesquite (*Prosopis palmeri*)], columnar cacti [e.g., Organ Pipe Cactus (*Stenocereus thurberi*)], and palm-lined oases [e.g., Mexican Fan Palm (*Washingtonia robusta*)] [72]. It has a hot, arid climate (Köppen-Geiger BWh) with most of its precipitation (~200 mm annually) occurring during the mid-summer to early fall (July-September) as monsoonal rains [72]. Although the range is situated more closely to the Gulf of California along its eastern escarpment, it slopes towards the west, producing a number of intermittent-stream drainages that terminate at the Pacific Ocean [73]. It is along these drainages that perennial wetlands are present, typically as springs [74,75], which represent the only permanent source of fresh water in this desert environment and make sedentary human life possible.

Although humans have occupied the *Giganta* for at least the last 4000 years [76,77] people of Euro-American descent began permanently occupying the region in 1697 AD following the establishment of the Jesuit mission of Loreto [78,79]. In order to more successfully colonize the peninsula, the Jesuits brought with them individuals and families to act as soldiers, metal smiths, leather workers, cattle herders, farmers, and teachers [80]. These early settlers, along with three additional waves of colonists who entered the peninsula following the Jesuit expulsion (1768 AD), Mexican Independence (1821 AD), and the *Porfiriato* Period (1875–1910 AD), form the genealogic roots of many modern Baja California peoples, including the *Choyero* ranching communities of the *Giganta* [42,81,82]. Historical demographic research suggests that male-biased dispersal was typical during the 19th century [42].

Currently, approximately 4000 people reside across the *Giganta* [83] resulting in a population density of about one person per two square kilometers. Households are predominantly located within valleys on flat-lands above dry riverbeds near springs. Four communities located in the southern *Giganta* are the focus of this study. While not a closed population, they were chosen because they represent a large segment of the mating pool for most residents in the area. Three communities are located within the most upstream sections of the Santa Rita watershed (Santa Maria de Toris, San Pedro de La Presa, and La Higuera), while the fourth is located in the most upstream section of the Las Pocitas-San Hilario watershed (La Soledad; Fig 1). These communities lack infrastructure development such as piped water, sanitation, electricity, and paved roads [83–85].

Their primary form of subsistence relies on animal husbandry, with an emphasis on meat and cheese production for household consumption as well as for sale at local and regional markets. Households tend to specialize in either goat or cattle production, but also maintain other livestock for domestic consumption (e.g., sheep and chickens) or transportation (e.g., horses, donkeys, and mules). Some men and women additionally contribute to household income by way of artisanal crafts they make and sell at local and regional markets. More generally, however, households supplement their diet through a government-sponsored food program, as well as through purchased food from urban markets (e.g., Ciudad Constitución, La Paz, Loreto). A number of ranches maintain *huertas* and/or *jardins*—men’s and women’s gardens, respectively, located near homes. While *huertas* provide comestible resources for the

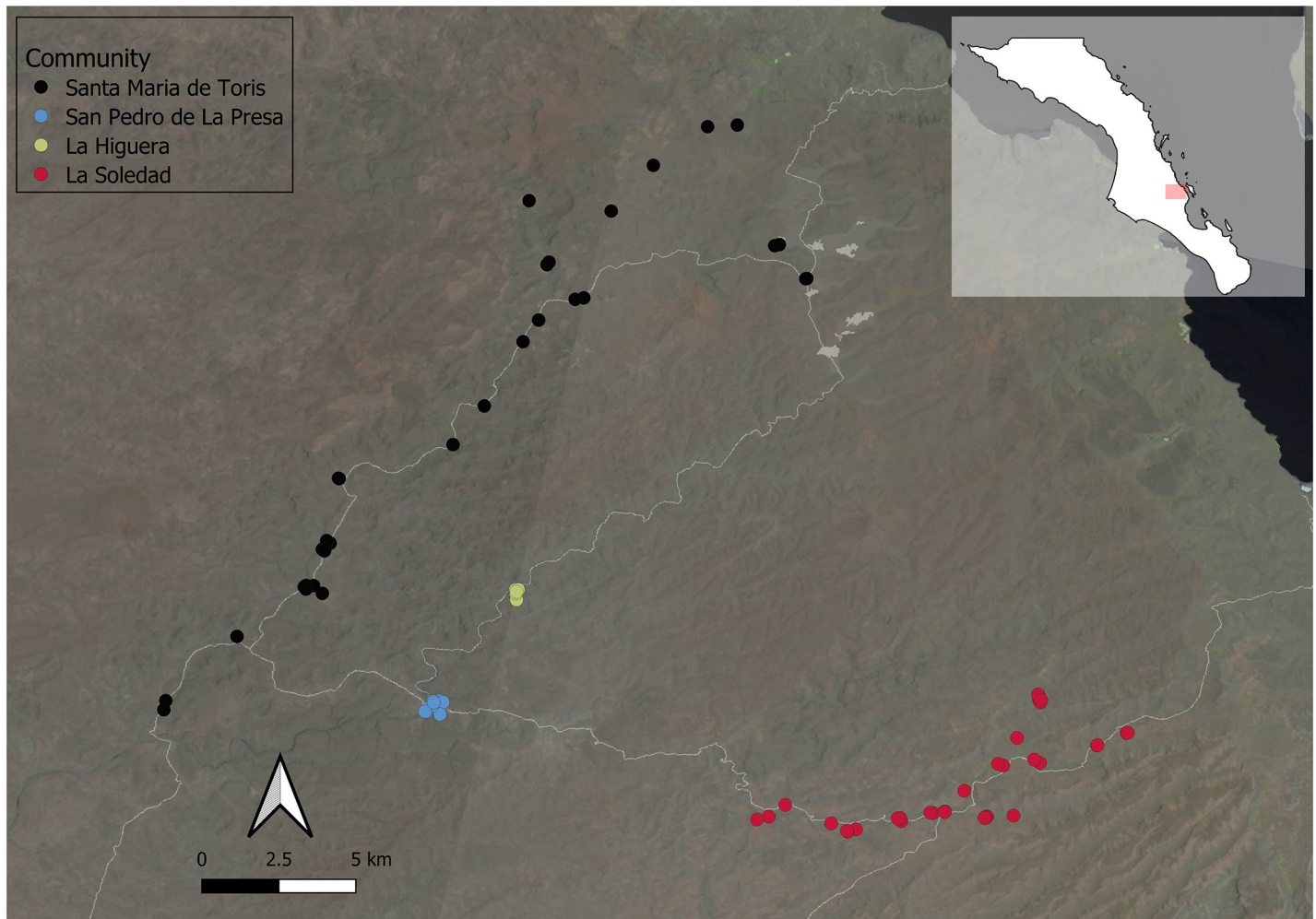


Fig 1. Location of the four Choyero ranching communities. Each dot represents a single household. White lines represent dirt roads.

<https://doi.org/10.1371/journal.pone.0239523.g001>

household and feed for domestic livestock (e.g., sorghum), they also serve as important repositories for Jesuit mission era crops such as figs, mangoes, limes, and oranges [86]. *Jardins*, on the other hand, serve important household functions such as shade and medicine. Land tenure is mixed, with some households located on private property, others on common-pool land units (*ejidos*), and still others which lack clear land title and therefore exist on contested lands. The predominant religion is Catholicism.

Based on the 2015 Mexican intercensal, Baja California Sur (BCS) has the second smallest population (745,601 people) out of Mexico's 32 states but represents the seventh largest state by surficial land area (73,909 square kilometers) [87]. As such, it has the lowest population density and represents one of the most rural states in Mexico [87]. In an effort to improve the social wellbeing of its rural populace, the BCS state government has promoted education through the *Coordinación Estatal de Albergues Escolares*. This education program, which is unique to BCS, provides rural communities access to primary and/or secondary education through the placement of schools, cafeterias, dormitories, teachers, and social welfare officers in rural locations. Currently, 31 *albergues escolares* exist in BCS [88]. Rural children are brought to the school for five days a week and then return home every weekend. Although the

albergues escolares program has existed in BCS for over sixty years, within the study site the program is comparatively new, with two *albergues* established in 1969 and 1980 in La Soledad and Santa Maria de Toris, respectively—two of the four communities. Additionally, a learning center was initiated in 2003 in the community of La Higuera (a third of the four communities) that is composed of a single, one-room structure for one teacher to provide primary education exclusively to the children of this community. This educational facility is not associated with the *albergues escolares* program. Although education has been on the rise among rural BCS families, there is variability in attendance, attrition rates, and educational outcomes [83]. Because these rural communities lack public transportation to schools, children who reside distantly from schools less regularly attend than those who live immediately adjacent to them. Socioeconomic factors too play a role in attendance and attrition. The families of children who must be driven to school may lack the resources necessary to pay for gasoline and vehicle maintenance, while others may lack the funds to pay for educational fees. Additionally, children are often engaged in domestic labor, causing some to either fail to complete their education, or to need to forgo it altogether.

Data

Ethics. Permission to conduct this research was obtained through the University of Utah Institutional Review Board (IRB # 00083096), as well through signed written agreements with official representatives (“*subdelegados*”) from the four communities. In accordance with each oversight body, consent was obtained from all head of households to conduct research, which was recorded by the lead investigator (SJM) at the time of the interview. Because not all participants could read or write, consent to participate was established verbally following a description of the project.

Community census. Community size, household composition, and demographic structure were obtained via a series of interviews with heads of households from 2015 to 2018. Across the four communities there were 90 households and 295 individuals in total (Fig 1; Table 1). Community size has a bimodal distribution (range: 28–123) (Fig 2) and all

Table 1. Descriptive statistics associated with census and marriage data.

	Yes	No	n	Mean (SD)	Median	Min/Max
Census Data						
Household Size: Santa Maria de Toris	-	-	37	3.3 (1.3)	3	1/7
Household Size: San Pedro de La Presa	-	-	10	2.8 (1.1)	3	1/5
Household Size: La Higuera	-	-	7	4.6 (0.8)	5	3/5
Household Size: La Soledad	-	-	36	3.1 (1.7)	3	1/6
Marriage Data						
Couple Genetic Relatedness	-	-	52	0.017 (0.04)	0	0/.156
Year of Marriage	-	-	53	1990 (15)	1989	1961/2016
Groom Age at 1 st Marriage	-	-	50	25.9 (6)	25	15/46
Bride Age at 1 st Marriage	-	-	53	21.6 (6)	20	14/40
Spousal Age Difference (Groom Age–Bride Age)	-	-	50	5 (6.6)	5	-9/21
Bride Age at 1 st Birth	-	-	50	22.7 (5)	22	16/35
Years of Education	-	-	101	4.5 (3)	5	0/12
Groom Ever Attended School	38	13	51	-	-	-
Bride Ever Attended School	42	11	53	-	-	-
Groom Dispersed	18	35	53	-	-	-
Bride Dispersed	31	22	53	-	-	-

<https://doi.org/10.1371/journal.pone.0239523.t001>

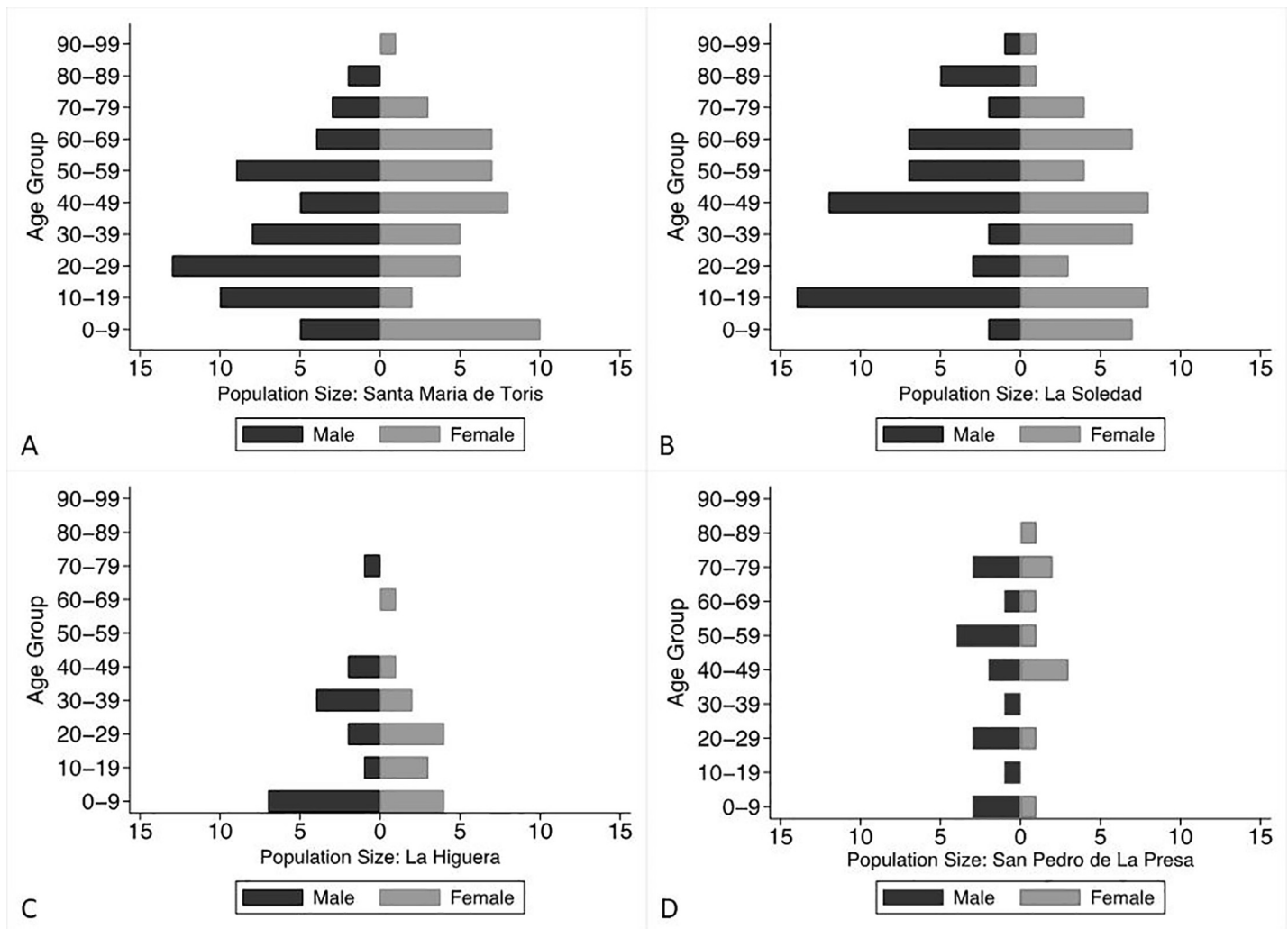


Fig 2. Age and sex distributions for the four Choyero ranching communities.

<https://doi.org/10.1371/journal.pone.0239523.g002>

communities demonstrate male-biased sex ratios at the time of data collection (mean = 1.2; range: 1.07 to 1.8). Ethnographic interviews suggest this bias is largely driven by female dispersal to both other ranching communities as well as to urban environments.

Dispersal, marriage, and reproductive data. Detailed dispersal, marriage, and reproductive data were collected from the heads of 54 households (60% of all households across the four communities) and is available as supporting information (S1 Data). Interviews were conducted in Spanish and included questions about the timing of marriage (age and year of marriage) and first reproduction, as well as the social context in which individuals met their mates. Dispersal was operationalized by determining whether an individual currently resided in the community in which they were born and raised Table 1. Both men and women disperse; however, a Chi square test shows that women were statistically more likely to disperse from their natal community ($X^2 = 6.4$; $n = 106$; $p = .01$) as reflected in the male biased sex-ratio. Because of their reliance on livestock production, ranches require male head of households and their sons to care for livestock. Furthermore, habitat saturation has limited men's ability to establish independent households. Accordingly, after marriage, sons typically reside in dwellings

immediately adjacent to their parents' home to allow for mutual aid due to subsistence practices and resource limitation.

Of the 54 households, 52 provided information on the social context in which they had met their partners. Seventeen couples met at a rural school, fifteen met at religious or civic festivals, twelve met while visiting other communities (often because they were looking for missing livestock), and eight met through mutual relatives.

Of the 108 married individuals interviewed, 104 had information on educational attainment. Average education attainment was four years (min/max = 0/12 years) and no difference existed between men and women in the number of school years attended ($t = 0.6$; d.f. = 102; $p = 0.3$). A relationship existed between education and dispersal, such that individuals who had attended school were less likely to disperse relative to those with no education ($X^2 = 4.8$; $p = .03$; $n = 104$; Natal-Education $n = 47$; Dispersed-Education $n = 33$; Natal-No Education $n = 8$; Dispersed-No Education $n = 16$). Furthermore, OLS regression, examining the relationship between year of birth and years of education, shows that education achievement has increased over time in this sample ($B = 0.13$; $p < .001$; $n = 101$).

Kinship. As is customary in anthropological kinship studies [e.g., 89], genetic kinship data were obtained via a series of genealogical interviews with all heads of households across the four communities between 2015 and 2018. The database contains information on 1032 individuals born between the late 1700's and 2018. Genetic relatedness was calculated using the software *Descent* [90]. Average genealogic depth is three-and-a-half generations (range: 2–6 generations) for the 54 interviewed couples. Thirteen couples (25 percent) were genetically related with a maximum genetic relatedness of 0.156 (i.e., first-cousins).

Analysis. Our analytical models are performed using STATA/IC 15.0 [91]. We apply two classes of models depending on the outcome variable. For the outcomes “groom age at first marriage”, “bride age at first marriage”, and “bride age at first birth”, we employ Generalized Estimating Equations (GEE) using the *xtgee* command. This approach allows us to estimate regression coefficients for fixed effects, while simultaneously accounting for the nested structure of our data. In each analysis, we nest the data at the level of the community using an independent correlation structure and employ Robust Standard Errors (RSE). Furthermore, because these outcome variables are continuous, we employ a Gaussian distribution and identity link function. For the outcome, “marriage couple genetic relatedness”, we employ Fractional Regression, using the *fracreg* command. This approach allows us to estimate regression coefficients for an outcome variable that ranges between zero and one. To account for the clustered nature of the data around communities, we use Clustered Robust Standard Errors and employ a Logit distribution. The following variables are included in our analyses: **Outcomes** 1) age at marriage (a continuous variable), 2) marriage partner genetic relatedness (a fractional variable), 3) age at first birth (a continuous variable); **Predictors** 4) dispersal (a binary variable: 1 = dispersed; 0 = did not disperse), 5) education (a binary variable: 1 = attended rural school; 0 = did not attend rural school); **Control** 6) year of marriage (a continuous variable).

Before moving to our analysis, we would like to make clear some limitations to our study design. First, our analytic models do not allow us to isolate causality. For example, for each individual, we do not know the entirety of the pool of potential mates available to them at the time that they were married. As a result, we are careful to interpret our findings as associations between variables. Second, our dataset does not include information on *why* some individuals obtained a particular level of education or *why* they did or did not disperse. Thus, factors that promote some to go to school or disperse, such as wealth or parental education, are unable to be accounted for in our statistical models. Lastly, while a feature of small communities, because our sample sizes are small, we are careful when interpreting our findings relative to other populations.

Table 2. GEE Gaussian regression models explaining age at first marriage.

	b (RSE)	Z	p
Male Model ¹			
Dispersed (1 = Yes; 0 = No)	-2.4 (0.09)	-27.2	< .001
Ever Attended School (1 = Yes; 0 = No)	-5.02 (1.2)	-6.2	< .001
Year of Marriage	0.06 (0.07)	1.0	.33
Constant	-97 (130)	-0.7	.46
Female Model ²			
Dispersed (1 = Yes; 0 = No)	-1.5 (1.5)	-0.9	.34
Ever Attended School (1 = Yes; 0 = No)	-4.7 (2.2)	-2.1	.04
Year of Marriage	-0.01 (0.03)	-0.2	.84
Constant	37 (52)	0.7	.48

¹ Wald $X^2 = 1024.8$; n-groups = 4; n-observations = 48; $p < .001$.

² Wald $X^2 = 4.7$; n-groups = 4; n-observations = 52; $p = .2$.

<https://doi.org/10.1371/journal.pone.0239523.t002>

Results

What are the effects of dispersal and education on age at first marriage?

To determine whether dispersal and education impact marriage outcomes, we employ sex-specific analyses. Furthermore, we include year of marriage to control for secular trends in both models. For men, we find that both dispersal ($b = -2.4$, $p < .001$) and having ever attended school ($b = -5.0$, $p < .001$) is significantly associated with a decrease in the age at marriage (Table 2). For women, we find that dispersal ($b = -1.5$, $p = .3$) has no association with age at marriage, while attending school ($b = -4.7$, $p = .04$) is associated with younger marriage ages (Table 2).

What is the effect of dispersal on marriage partner genetic relatedness?

To test how dispersal affects marriage partner genetic relatedness, we perform an analysis that examines both male and female dispersal simultaneously and include year of marriage to control for secular trends. We find that male dispersal has no significant relationship with marriage partner genetic relatedness (Odds Ratio = 1.4; $p = .72$), while for women, dispersal is significantly associated with an increase in the odds of marrying a genetic relative (Odds Ratio = 15.7; $p = .01$) (Table 3)(Fig 3).

What are the effects of dispersal and school attendance on age at first birth?

Research typically indicates that dispersal and school attendance can cause individuals to delay reproduction. However, our analyses above suggest that neither were associated with an

Table 3. Fractional regression model explaining marriage couple genetic relatedness.

	OR (CRSE)²	z	p
Female Dispersed	15.7 (16.9)	2.6	.01
Male Dispersed	1.4 (1.3)	0.4	.72
Year of Marriage	0.9 (0.02)	-0.3	.80
Constant	15 (565)	0.1	.94

¹ Wald $X^2 = 23.9$; n-groups = 4; n-observations = 51; $p < .001$.

² Clustered Robust Standard Errors.

<https://doi.org/10.1371/journal.pone.0239523.t003>

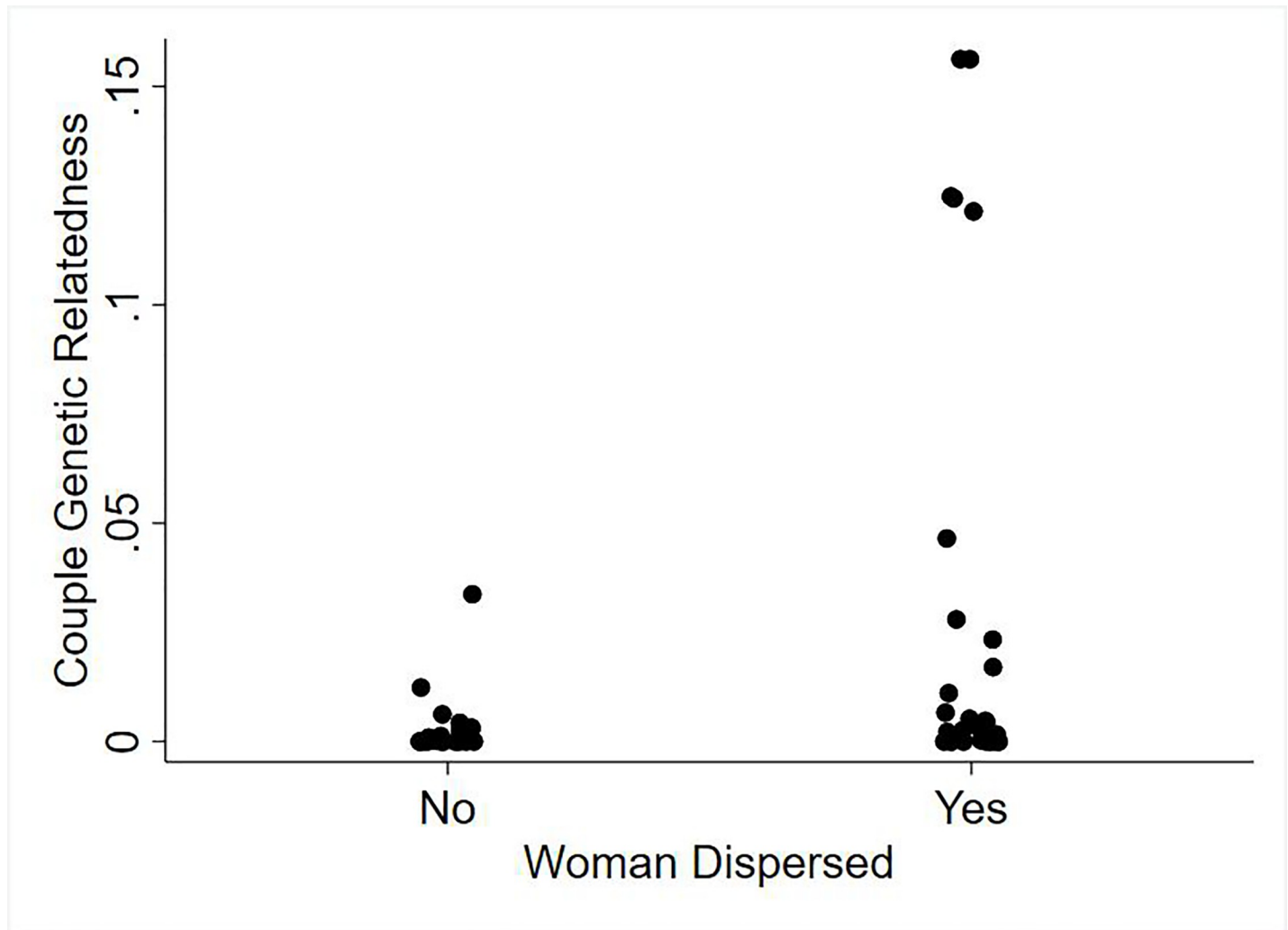


Fig 3. The relationship between female dispersal and marriage couple genetic relatedness.

<https://doi.org/10.1371/journal.pone.0239523.g003>

increase in female age at marriage, suggesting that these factors have dissimilar impacts in small, dispersed communities. As such, they too could have contrasting effects on female age at first reproduction. Because of the known statistical correlations between age at marriage and first birth [92], we control for age at marriage. We find that education ($b = -1.9$; $p < .001$), but not dispersal ($b = -0.07$; $p = .9$), is significantly associated with a decrease in the age at first birth (Table 4).

Table 4. GEE Gaussian regression model¹ explaining female age at first birth.

	b (RSE)	Z	P
Female Dispersed (1 = Yes; 0 = No)	-0.07 (0.8)	-0.9	.93
Ever Attended School (1 = Yes; 0 = No)	-1.9 (0.3)	-5.8	< .001
Female Age at Marriage	0.8 (0.02)	36.7	< .001
Constant	7.8 (0.8)	9.6	< .001

¹Wald $X^2 = 1875.8$; n -groups = 4; n -observations = 49; $p < .001$.

<https://doi.org/10.1371/journal.pone.0239523.t004>

Discussion

Our analyses among men and women living across four small, rural communities yield three sets of results that challenge conventional expectations regarding consequences to dispersal and education. First, dispersal may play an important role in *minimizing* reproductive costs. Contrary to previous research on the topic [39–41], we find no evidence that dispersal is associated with an increase in the age at marriage or first reproduction in women. And among men, dispersal is associated with younger ages of marriage than those who stay in their natal area. Second, while dispersal has been presented as a way to manage inbreeding depression in one's natal group [93], we find that female dispersal is statistically associated with an increased likelihood of marrying genetic kin. That is, female dispersal may increase rather than decrease genetic relatedness among marriage partners. Third, counter to typical results for the role of education on reproductive timing [63–65], attending school is associated with a lower age at marriage for men and lower age at first birth for women. Below we offer interpretations of our findings and their possible applications to the literature on small populations across the social and biological sciences.

Taken together, our analyses demonstrate that factors typically associated with individuals delaying reproduction in large populations may actually accelerate marriage and reproduction in small, dispersed communities. Given that small communities are prone to demographic processes that can lead to local mate unavailability [1–3], dispersal and school attendance can serve to expand mating markets and lower partner search costs. As such, reproductive dynamics should be expected to vary by community size (as is commonly reported in the nonhuman animal literature). For example, those who disperse in large populations typically do so not because of a lack of local mates, but often due to local resource scarcity and/or economic hardship [41,45]. However, within the small communities presented here, dispersal allows men to secure a mate more quickly than those who stay home and face local mate unavailability. While dispersal is often presented as being either uniformly negative or positive on individual outcomes, a more nuanced approach is likely appropriate given that decisions to migrate are conditioned by environmental and/or individual-level variability, such as local mate scarcity, habitat suitability and saturation, and kinship institutions. We plan to target future research on the multiple motivations for and consequences of dispersal on individual outcomes.

We also find that dispersal has a sex-specific association with marriage partner genetic relatedness. This implies sex differences in the structure and function of social support networks, as well as the potential for parent-offspring conflicts in mating decisions [*sensu* 62]. For example, men are less likely to disperse than women. Why? Across these ranching communities, males spend substantial parts of their day covering large areas within the desert-mountains herding and caring for livestock. Given that this work is done by fathers and their sons, and is necessary for household functioning, parents desire sons to stay at home. Women, on the other hand, are more likely to disperse than males and, when they disperse, are more likely to marry males who are genetic kin. Why? Child health and wellbeing is clearly tied to genetic kin support across societies. It is well-documented that offspring outcomes are improved when mothers have support from family members, especially maternal kin [reviewed in 57]. Thus, to dampen the costs of dispersal where males are the philopatric sex, women may target marrying genetic kin from distant communities as a means to re-establish social support outside of their natal area. This may provide young mothers with the alloparental support necessary for rearing children in novel social environments. Thus, we argue that the linkage between dispersal and marriage to genetic kin represents a possible mechanism to deal with both local mate scarcity and the needs of a hyper-cooperative species that relies on genetic kinship for rearing offspring [48,50,52–54,62].

In contrast to much research on the effect of education on the initiation of reproduction [65–69], we find that school attendance is associated with an acceleration of the onset of marriage and reproduction in these rural ranching communities. Rather than interpreting this finding as contradictory to previous research, we instead highlight the nature of education in this rural context. Ethnographic interviews with ranchers suggest that although education improves academic skills acquisition, school attendance largely centers on improving opportunities for socialization as well as gaining access to state sponsored resources, such as meal provisioning. Due to both the limited quality of rural education programs, as well as the lack of easy access to well-developed labor markets in cities, rural ranchers are at a competitive disadvantage for acquiring jobs that demand skills gained through compulsory education. Instead, school attendance appears to assist people with locating social partners by aggregating children across large geographic distances that are often difficult to traverse. This phenomenon is likely typical of other rural, dispersed, economically transitioning populations where state sponsored institutions allow individuals to aggregate for extended periods of time, but labor markets are underdeveloped or distant [94].

Before concluding we would like to highlight some limitations of our work. First, we are unable to determine causality due to our methodological approach. While the data collection protocol allows us to understand current community structure and mate availability, it does not allow us to reconstruct these items in the past prior to marriage. Second, with our data, we cannot determine why some individuals dispersed or went to school while others did not. The factors that influence who disperses and attends school (e.g. household wealth, parental education, and distance to schools), are potential confounds that may impact marriage and reproductive outcomes. While variability in these factors plays an important role in education attainment and dispersal in many groups (e.g. rural-to-urban migration or in international settings) [39,45], virtually all of the dispersal dynamics reported here occur within the ranching communities of the *Giganta*, where individuals are moving from one rural ranching community to another. As such, it remains open as to how factors motivating dispersal operate in small, rural, dispersed communities. Lastly, our sample sizes are small given the realities of working with small populations and this impacts our ability to make strong claims of generalizability across place. However, while our sample size is small, our ethnographic description and detailed information for each individual provides a rich tapestry from which to understand and interpret results. Future work could move the literature forward by both addressing these limitations and applying the insights detailed here to other locales to better understand reproductive dynamics across small populations.

In conclusion, small communities located within meta-populations of low population density present considerable challenges for initiating reproduction. While dispersal and school attendance have typically been portrayed as costly to humans by way of fertility, this expectation is likely relevant to large and not small populations like those presented here. We instead find that dispersal and education both lower reproductive costs and allow people to initiate reproduction at earlier ages. Moreover, while dispersal is typically argued as a strategy for minimizing inbreeding depression, we find that women are more likely to marry kin if they disperse. Marrying kin when dispersing from the natal area may serve to minimize reproductive costs by way of integrating women into pre-established social networks necessary to aid in raising altricial young. In sum, small communities characterize the social structure for much of human evolution as well as for the world's rural people today. Accordingly, predictions and findings from contemporary groups with large populations regarding fertility may not be scalable to small-scale communities and thus require population size to be considered as an important component to the selective area.

Supporting information

S1 Data.
(XLSX)

Acknowledgments

The authors wish to thank the gracious support and hospitality of the people of Santa Maria de Toris, La Higuera, San Pedro de La Presa, and La Soledad, with a special thanks to the Amador and Bibo families. We also thank the editor, David Lawson, as well as Thomas Kraft and one anonymous reviewer for their insightful reviews and commentary that have improved this manuscript.

Author Contributions

Conceptualization: Shane J. Macfarlan, Ryan Schacht.

Data curation: Shane J. Macfarlan.

Formal analysis: Shane J. Macfarlan.

Funding acquisition: Shane J. Macfarlan, Eric Schniter.

Investigation: Shane J. Macfarlan, Eric Schniter, Juan José Garcia, Diego Guevara Beltran.

Methodology: Shane J. Macfarlan.

Project administration: Shane J. Macfarlan.

Resources: Shane J. Macfarlan.

Software: Shane J. Macfarlan.

Supervision: Shane J. Macfarlan.

Visualization: Shane J. Macfarlan, Jory Lerback.

Writing – original draft: Shane J. Macfarlan, Ryan Schacht, Eric Schniter.

Writing – review & editing: Shane J. Macfarlan, Ryan Schacht, Eric Schniter.

References

1. May RM. *Stability and Complexity in Model Ecosystems*. Princeton, NJ: Princeton University Press; 1973.
2. Lande R. Risks of population extinction from demographic and environmental stochasticity and random catastrophes. *Am Nat*. 1993; 142: 911–927. <https://doi.org/10.1086/285580> PMID: 29519140
3. Lande R, Engen S, Saether BE. Extinction times in finite metapopulation models with stochastic local dynamics. *Oikos*. 1998; 83: 383–389.
4. Lande R, Engen S, Saether B-E. *Stochastic Population Dynamics in Ecology and Conservation*. Oxford, UK: Oxford University Press; 2003.
5. Lande R. Genetics and demography in biological conservation. *Science*. 1988; 241: 1455–1460. <https://doi.org/10.1126/science.3420403> PMID: 3420403
6. Lande R. Demographic stochasticity and Allee effect on a scale with isotropic noise. *Oikos*. 1998; 83: 353–358.
7. Fauvergue X, Vercken E, Malausa T, Hufbauer RA. The biology of small, introduced populations, with special reference to biological control. *Evol Appl*. 2012; 5(5): 424–443. <https://doi.org/10.1111/j.1752-4571.2012.00272.x> PMID: 22949919
8. Kramer K, Schacht R, Bell A. Adult sex ratios and partner scarcity among hunter-gatherers: Implications for dispersal patterns and the evolution of human sociality. *Philos T R Soc B*. 2017; 372: 20160316.

9. Matson PA, Chung S, Ellen JM. Perceived neighborhood partner availability, partner selection and risk for sexually transmitted infections within a cohort of adolescent females. *J Adolesc Health*. 2014; 55(1): 122–127. <https://doi.org/10.1016/j.jadohealth.2013.11.007> PMID: 24393545
10. Pouget ER. Social determinants of adult sex ratios and racial/ethnic disparities in transmission of HIV and other sexually transmitted infections in the USA. *Philos T R Soc B*. 2017; 372(1729): 20160323.
11. Schacht R, Kramer K. Patterns of family formation in response to sex ratio variation. *PLoS One*. 2016; 11(8): e0160320 <https://doi.org/10.1371/journal.pone.0160320> PMID: 27556401
12. Ugglä C, Andersson G. Higher divorce risk when mates are plentiful? Evidence from Denmark. *Biol Letters*. 2018; 14(9): 20180475.
13. Schacht R, Borgerhoff-Mulder M. Sex ratio effects on reproductive strategies in humans. *R. Soc. Open Sci*. 2015; 2(1): <https://doi.org/10.1098/rsos.140402>.
14. Messner SF, Sampson RJ. The sex ratio, family disruption, and rates of violent crime: The paradox of demographic structure. *Social Forces*. 1991; 69(3): 693–713.
15. Schacht R, Rauch K, Borgerhoff-Mulder M. Too many men: The violence problem? *Trends Ecol Evol*. 2014; 29(4): 214–222. <https://doi.org/10.1016/j.tree.2014.02.001> PMID: 24630906
16. Schacht R., Tharp D, Smith KR. Marriage markets and male mating effort: violence and crime are elevated where men are rare. *Hum Nat*. 2016; 27(4): 489–500. <https://doi.org/10.1007/s12110-016-9271-x> PMID: 27678412
17. Binford LR. *Constructing Frames of Reference*. Berkeley, CA: University of California Press; 2001.
18. Hill RA, Dunbar RIM. Social network size in humans. *Hum. Nat*. 2013; 14: 53–72.
19. Hamilton MJ, Milne BT, Walker RS, Burger O, Brown JH. The complex structure of hunter–gatherer social networks. *Proc. R. Soc. B*. 2007; 274: 2195–2203. <https://doi.org/10.1098/rspb.2007.0564> PMID: 17609186
20. Tenesa A, Navarro P, Hayes BJ, Duffy DL, Clarke GM, Goddard ME, et al. Recent human effective population size estimated from linkage disequilibrium. *Genome Res*. 2007; 17: 520–526. <https://doi.org/10.1101/gr.6023607> PMID: 17351134
21. Hill K, Walker RS, Božičević M, Eder J, Headland T, Hewlett B, et al. Co-residence patterns in hunter-gatherer societies show unique human social structure. *Science*. 2011; 331: 1286–1289. <https://doi.org/10.1126/science.1199071> PMID: 21393537
22. Tallavaara M, Luoto M, Korhonen N, Järvinen H, Seppä H. Human population dynamics in Europe over the Last Glacial Maximum. *Proc Natl Acad Sci USA*. 2015; 112(27): 8232–8237. <https://doi.org/10.1073/pnas.1503784112> PMID: 26100880
23. Chapais B. *Primeval Kinship: How Pair-Bonding Gave Birth to Human Society*. Cambridge, MA Harvard Univ. Press; 2008.
24. Moore J, Ali R. 1984 Are dispersal and inbreeding avoidance related? *Animal Behaviour* 32: 94–112.
25. Pusey A, Wolf M. Inbreeding avoidance in animals. *Trends Ecol Evol*. 1996; 11(5): 201–206. [https://doi.org/10.1016/0169-5347\(96\)10028-8](https://doi.org/10.1016/0169-5347(96)10028-8) PMID: 21237809
26. Perrin N, Mazalov V. Dispersal and inbreeding avoidance. *Am Nat*. 1999; 154: 282–292. <https://doi.org/10.1086/303236> PMID: 10506544
27. Rose D, Rousset F. Inbreeding depression and the evolution of dispersal rates. A multilocus model. *Am Nat*. 2005; 166: 708–721. <https://doi.org/10.1086/497543> PMID: 16475087
28. Trochet A, Courtois EA, Stevens VM, Baguette M, Chaine A, Schmeller DS, Clobert J. Evolution of Sex-Biased Dispersal. *J Theor Biol*. 2016; 91(3): 297–320.
29. Greenwood PJ. 1980 Mating systems, philopatry and dispersal in birds and mammals. *Anim Behav*. 1980; 28: 1140–1162.
30. Dobson FS. Competition for mates and predominant juvenile male dispersal in mammals. *Anim Behav*. 1982; 30: 1183–1192.
31. Mabry KE, Shelley EL, Davis KE, Blumstein DT, Van Vuren DH. Social mating system and sex-biased dispersal in mammals and birds: A phylogenetic analysis. *PLoS ONE*. 2013; 8(3): e57980. <https://doi.org/10.1371/journal.pone.0057980> PMID: 23483957
32. Bonte D, Van Dyck H, Bullock JM, Coulon A, Delgado M, Gibbs M, et al. Costs of dispersal. *Biol Rev*. 2012; 87(2): 290–312. <https://doi.org/10.1111/j.1469-185X.2011.00201.x> PMID: 21929715
33. Walker KK, Walker CS, Goodall J, Pusey AE. Maturation is prolonged and variable in female chimpanzees. *J. Hum. Evol*. 2016; 114: 131–140.
34. Maag N, Cozzi G, Bateman A, Heistermann M, Ganswindt A, Manswer M, et al. Cost of dispersal in a social mammal: body mass loss and increased stress. *P R Soc B*. 2019; 286: 20190033.

35. Chapais B. The deep structure of human society: Primate origins and evolution. In: Kappeler PM, Silk JB, editors. *Mind the gap: Tracing the origins of human universals*. Heidelberg: Springer; 2010. pp. 19–51.
36. Macfarlan SJ, Walker W, Flinn MV, Chagnon NA. Lethal coalitionary aggression and long-term alliance formation among Yanomamö men. *Proc Natl Acad Sci USA*. 2014; 111(47): 1662–16669. <https://doi.org/10.1073/pnas.1418639111> PMID: 25349394
37. Macfarlan SJ, Erickson P, Yost J, Regalado J, Jaramillo L, Beckerman S. Bands of Brothers and In-Laws: Waorani Warfare, Marriage, and Alliance Formation. *P R Soc B*. 2018; 20181859. <http://dx.doi.org/10.1098/rspb.2018.1859>.
38. Koster J, Dieter L, Nolin D, Power E, Alvergne A, Mace R, et al. Kinship ties across the lifespan in human communities: Implications for reproductive conflict theory. *Philos T R Soc B*. 2019; 374(1780). <https://doi.org/10.1098/rstb.2018.0069>
39. Carlson ED. Impact of international migration upon the timing of marriage and childbearing. *Demography*. 1985; 22(1): 61–72. PMID: 3979616
40. Voland E. Reproductive decisions viewed from an evolutionary informed historical demography. In Dunbar RIM, editor. *Human Reproductive Decisions*. St. Martin Press: NY; 1995. pp. 137–159.
41. Voland E, Dunbar RIM. The impact of social status and migration on female age at marriage in an historical population in North-West Germany. *J Biosoc Sci*. 1997; 29: 355–360. <https://doi.org/10.1017/s0021932097003556> PMID: 9881141
42. Macfarlan SJ, Schacht R, Foley C, Cahoon S, Osusky G, Vernon KB, et al. Marriage dynamics in old Lower California: Ecological constraints and reproductive value in an arid peninsular frontier. *Biodemogr Soc Biol*. 2020; 156–171. <https://doi.org/10.1080/19485565.2020.1728685>
43. Hajnal J. European marriage patterns in perspective. In Glass DV, Eversley DEC, editors. *Population in History: Essays in Historical Demography*. London: Edward Arnold. 1965. Pp. 101–143.
44. Low BS. Reproductive life in nineteenth century Sweden: An evolutionary perspective on demographic phenomena. *Ethol Sociobiol*. 1991; 12: 411–448.
45. Strassman BI, Clarke AL. Ecological constraints on marriage in rural Ireland. *Evol Hum Behav*. 1998; 19: 33–55.
46. Miner EJ, Gurven M, Kaplan H, Gaulin SJC. Sex difference in travel is concentrated in adolescence and tracks reproductive interests. *P R Soc B*. 2014; 281(1796).
47. Nowak M. Five rules for the evolution of cooperation. *Science*. 2006; 314(5805): 1560–1563. <https://doi.org/10.1126/science.1133755> PMID: 17158317
48. Hawkes K. Grandmothers and the evolution of human longevity. *Am J Hum Biol*. 2003; 15: 380–400. <https://doi.org/10.1002/ajhb.10156> PMID: 12704714
49. Alvard M. Kinship and cooperation: The axe fight revisited. *Hum Nat*. 2009; 20: 394–416.
50. Walker RS, Hill KR, Flinn MV, Ellsworth R. Evolutionary history of hunter-gatherer marriage practices. *PLoS ONE*. 2011; 6(4): e19066. <https://doi.org/10.1371/journal.pone.0019066> PMID: 21556360
51. Macfarlan SJ, Quinlan RJ, Post E. Emergent matriliney in a matrifocal, patrilineal population: A male coalitionary perspective. *Philos T R Soc B*. 2019; 374(1780). <https://doi.org/10.1098/rstb.2018.0073>
52. Hrdy SB. *Mother nature: A history of mothers, infants, and natural selection*. New York, NY: Pantheon; 1999.
53. Hrdy S. B. Comes the child before the man: how cooperative breeding and prolonged postweaning dependence shaped human potentials. In Hewlett B, Lamb M, editors. *Hunter-gatherer childhoods: Evolutionary, developmental, and cultural perspectives*. New York, NY: Aldine; 2005. pp. 65–91.
54. Hrdy SB. *Mother and others: The evolutionary origins of mutual understanding*. Cambridge, MA: Harvard University Press; 2009.
55. Kaplan H, Hill K, Lancaster J, Hurtado AM. Theory of human life history evolution: diet, intelligence, and longevity. *Evol Anthropol*. 2000; 9: 156–185.
56. Kaplan HS, Hooper PM, Gurven M. The evolutionary and ecological roots of human social organization. *P R Soc B*. 2009; 364(1533): 3289–3299.
57. Sear R, Mace R. Who keeps children alive? A review of the effects of kin on child survival. *Evol Hum Behav*. 2008; 29(1): 1–18.
58. Perry G, Daly M, Macfarlan SJ. Maternal foster families provide more stable placements than paternal families. *Child Youth Serv Rev*. 2014; 46: 155–159.
59. Crognier E, Villena M, Vargas E. 2002. Helping patterns and reproductive success in Aymara communities. *Am J Hum Biol*. 2002; 14: 372–379. <https://doi.org/10.1002/ajhb.10047> PMID: 12001095
60. Levi-Strauss C. *The Elementary Structures of Kinship*. Boston: Beacon; 1949.

61. Fox R. *Kinship and Marriage: An Anthropological Perspective*. Cambridge, UK: Cambridge Univ Press; 1967.
62. Chagnon N, Lynch RF, Shenk MK, Hames R, Flinn MV. Cross-cousin marriage among the Yanomamö shows evidence of parent-offspring conflict and mate competition between brothers. *Proc Natl Acad Sci USA*. 2017; 114(13): E2590–E2607. <https://doi.org/10.1073/pnas.1618655114> PMID: 28289230
63. Galor O. From Stagnation to Growth: Unified Growth Theory. In: Aghion P, Durlauf SN, editors. *Handbook of Economic Growth*, vol. 1A. Amsterdam: Elsevier; 2005. pp. 171–293.
64. Galor O. The demographic transition and the emergence of sustained economic growth. *J Euro Econ Assoc*. 2005; 3 (2–3): 494–504.
65. Lutz W, Cuaresma JC, Kebede E, Prskawetz A, Sanderson WC, Striessnig E. Education rather than age structure brings demographic dividend. *Proc Natl Acad Sci USA*. 2019; 116(26): 12798–12803. <https://doi.org/10.1073/pnas.1820362116> PMID: 31182606
66. Lutz W, Cuaresma JC, Sanderson W. Economics. The demography of educational attainment and economic growth. *Science*. 2008; 319: 1047–1048. <https://doi.org/10.1126/science.1151753> PMID: 18292326
67. Kaplan H. Evolutionary and wealth flows theories of fertility: Empirical tests and new models. *Popul Dev Rev*. 1994; 20(4): 753–791.
68. Kaplan H. A theory of fertility and parental investment in traditional and modern human societies. *Am J Phys Anthr*. 1996; 101(s23): 91–135.
69. Kaplan H, Hill K, Hurtado AM, Lancaster J. The embodied capital theory of human evolution. In Ellison PT, editor. *Reproductive Ecology and Human Evolution*. New Jersey: Aldine Transaction; 2001. pp. 293–318.
70. Hedges S, Borgerhoff-Mulder M, James S, Lawson D. Sending children to school: Rural livelihoods and parental investment in education in northern Tanzania. *Evol Hum Behav*. 2016; 37: 142–151.
71. León de la Luz JL, Rebman J, Dominguez-León M, Domínguez-Cadena R. The vascular flora and floristic relationships of the Sierra de La Giganta in Baja California Sur, Mexico. *Revista Mexicana de Biodiversidad*. 2008; 79: 29–65.
72. Rebman JP, Roberts NC. *Baja California Plant Field Guide*. 3rd Ed. San Diego, CA: Sunbelt Publication; 2012.
73. León de la Luz JL, Domínguez-Cadena R. Hydrophytes of the oases in the Sierra de la Giganta of Central Baja California Sur, Mexico: Floristic composition and conservation status. *J Arid Environ*. 2006; 67: 553–565.
74. Maya C, Coria R, Dominguez R. Caracterización de los Oasis. In Arriaga L, Rodríguez-Estrella R, editors. *Los Oasis de la Península de Baja California, México*. La Paz, BCS, Mexico: CIBNOR; 1997. pp 5–26.
75. Ruiz-Campos G, Andreu-Soler A, Vidal-Abarca Gutiérrez MR, Delgadillo-Rodríguez J, Suárez Alonso ML, González-Abraham C, et al. *Catálogo de Humedales Dulceacuicolas de Baja California Sur, Mexico*. Tlalpan, Mexico: Secretaría de Medio Ambiente y Recursos Naturales; 2014.
76. Macfarlan SJ, Henrickson CN. Inferring relationships between indigenous Baja California Sur and Seri/Comcáac populations through cultural traits. *The Journal of California and Great Basin Anthropology*. 2010; 30(1): 51–68.
77. Henrickson C. *The Archaeology of Cueva Santa Rita: A Late Holocene Rockshelter in the Sierra de La Giganta of Baja California Sur, Mexico*. Unpublished Doctoral Dissertation. University of California Berkeley. 2014.
78. Crosby HW. *Antigua California: Mission and Colony on the Peninsular Frontier, 1697–1768*. Albuquerque, NM: University of New Mexico Press; 1994.
79. Vernon EW. *Las Misiones Antiguas: The Spanish Missions of Baja California*. Santa Barbara, CA: Viejo Press; 2002.
80. Crosby HW. *Last of the Californios*. La Jolla, CA: Copley Books; 1981.
81. Martínez PL. *A History of Lower California*. Trans. E. D. Turner. La Paz, BCS: Editorial Baja California; 1960.
82. Martínez PL. *Guía Familiar de Baja California: 1700–1900*. La Paz, Baja California Sur: Instituto Sudcaliforniano de Cultura; 1965.
83. Kiy R, McEnany A, Monahan C. *Baja California Sur's Community-Based Opportunities & Needs*. National City, CA: International Community Foundation; 2006. <https://doi.org/10.3402/meo.v20.27260> PMID: 26088189
84. Comisión Nacional de Áreas Naturales Protegidas. 2014. *Estudio Previo Justificativo para el establecimiento del área natural protegida de competencia de la Federación con la categoría de Reserva de la*

- Biosfera “Sierras La Giganta y Guadalupe”, en el estado de Baja California. La Paz, BCS, Mexico: SEMARNAT; 2014.
85. Secretaría de Desarrollo Social. Catálogo de Localidades. Accessed [Cited 2019 August 30]. Available from: <http://www.microrregiones.gob.mx/catloc/LocdeMun.aspx?tipo=clave&campo=loc&ent=03&mun=003>.
 86. Nabhan GP, Garcia J, Routson R, Routson K, Carintilde M. Desert oases as genetic refugia of heritage crops: Persistence of forgotten fruits in the mission orchards of Baja California, Mexico. *International Journal of Biodiversity and Conservation*. 2010; 2(4): 56–69.
 87. Instituto Nacional de Estadística Geografía. Indicadores por entidad federativa. [Cited 2019 August 30]. Available from: <https://www.inegi.org.mx/app/estatal/>.
 88. Secretaría de Educación Pública de Baja California Sur. Coordinación de Albergues Escolares. [Cited 2019 August 30]. Available from: <http://www.sepbcs.gob.mx/educativo/albergues>.
 89. Quinlan R, Hagen EH. New genealogy: It’s not just for kinship anymore. *Field Method*. 2008; 20: 129–154.
 90. Hagen E. Descent. 2017; See <http://code.google.com/p/descent/>.
 91. StataCorp. *Stata Statistical Software: Release 16*. 2019. StataCorp LLC, College Station, TX.
 92. Trussel J, Reinis KI. Age at first marriage and age at first birth. *Popul Bull UN*. 1989; 26: 127–185.
 93. Roze D, Rousset F. Inbreeding depression and the evolution of dispersal rates: a multilocus model. *Am Nat*. 2005; 166(6): 708–721. <https://doi.org/10.1086/497543> PMID: 16475087
 94. Hedges S, Sear R, Todd J, Urassa M, Lawson DW. Earning their keep? Fostering, children’s education, and work in north-western Tanzania. *Demogr Res*. 2019; 41: 263–292.