

University of Arkansas, Fayetteville

**ScholarWorks@UARK**

---

Patents Granted

---

12-31-2019

## **Fusion proteins of collagen-binding domain and parathyroid hormone**

Robert C. Gensure

Joshua Sakon

Osamu Matsushita

Tulasi Ponnappakkam

Follow this and additional works at: <https://scholarworks.uark.edu/pat>

---



US010519213B2

(12) **United States Patent**  
**Gensure et al.**

(10) **Patent No.:** **US 10,519,213 B2**  
(45) **Date of Patent:** **Dec. 31, 2019**

(54) **FUSION PROTEINS OF  
COLLAGEN-BINDING DOMAIN AND  
PARATHYROID HORMONE**

*C12N 9/52* (2006.01)  
*A61K 9/00* (2006.01)

(52) **U.S. Cl.**

CPC ..... *C07K 14/635* (2013.01); *A61K 8/64*  
(2013.01); *A61K 8/66* (2013.01); *A61K 9/0019*  
(2013.01); *A61K 35/28* (2013.01); *A61K*  
*38/164* (2013.01); *A61K 38/29* (2013.01);  
*A61K 38/4886* (2013.01); *A61Q 7/00*  
(2013.01); *C12N 9/1088* (2013.01); *C12N*  
*9/50* (2013.01); *C12N 9/52* (2013.01); *C12N*  
*9/6489* (2013.01); *C12Y 205/01018* (2013.01);  
*C12Y 304/24003* (2013.01); *C12Y 304/24007*  
(2013.01); *A61K 2800/86* (2013.01); *A61K*  
*2800/91* (2013.01); *C07K 2319/00* (2013.01);  
*C07K 2319/50* (2013.01); *C07K 2319/70*  
(2013.01)

(71) Applicants: **THE BOARD OF TRUSTEES OF  
THE UNIVERSITY OF ARKANSAS,**  
Little Rock, AR (US); **OCHSNER  
CLINIC FOUNDATION,** New  
Orleans, LA (US); **NATIONAL  
UNIVERSITY CORPORATION**  
**KAGAWA UNIVERSITY,** Kagawa  
(JP)

(72) Inventors: **Robert C. Gensure,** Lexington, MA  
(US); **Joshua Sakon,** Fayetteville, AR  
(US); **Osamu Matsushita,** Okayama  
(JP); **Tulasi Ponnappakkam,** Metairie,  
LA (US)

(73) Assignees: **THE BOARD OF TRUSTEES OF  
THE UNIVERSITY OF ARKANSAS,**  
Little Rock, AR (US); **OCHSNER  
CLINIC FOUNDATION,** New  
Orleans, LA (US); **NATIONAL  
UNIVERSITY CORPORATION**  
**KAGAWA UNIVERSITY,** Kagawa  
(JP)

(58) **Field of Classification Search**

None  
See application file for complete search history.

(\* ) Notice: Subject to any disclaimer, the term of this  
patent is extended or adjusted under 35  
U.S.C. 154(b) by 0 days.

(56) **References Cited**

U.S. PATENT DOCUMENTS

5,914,126 A 6/1999 Li et al.  
6,362,163 B1 3/2002 Gardella et al.  
(Continued)

FOREIGN PATENT DOCUMENTS

EP 0207751 1/1987  
JP 2002-58485 2/2002  
(Continued)

(21) Appl. No.: **16/517,988**

(22) Filed: **Jul. 22, 2019**

(65) **Prior Publication Data**

US 2019/0338010 A1 Nov. 7, 2019

**Related U.S. Application Data**

(60) Continuation of application No. 16/249,540, filed on  
Jan. 16, 2019, now Pat. No. 10,358,471, which is a  
continuation of application No. 15/387,817, filed on  
Dec. 22, 2016, now Pat. No. 10,202,434, which is a  
continuation of application No. 14/743,629, filed on  
Jun. 18, 2015, now Pat. No. 9,528,099, which is a  
division of application No. 13/898,058, filed on May  
(Continued)

OTHER PUBLICATIONS

Toyoshima, T. et al., "Collagen-binding domain of a Clostridium  
histolyticum collagenase exhibits a broad substrate spectrum both in  
vitro and in vivo," *Connective Tissue Research* (2001) 42(4):281-  
290.  
(Continued)

*Primary Examiner* — Satyanarayana R Gudibande  
(74) *Attorney, Agent, or Firm* — Quarles & Brady LLP

(51) **Int. Cl.**

*A61K 38/00* (2006.01)  
*C07K 14/635* (2006.01)  
*C12N 9/10* (2006.01)  
*C12N 9/64* (2006.01)  
*C12N 9/50* (2006.01)  
*A61K 35/28* (2015.01)  
*A61K 38/16* (2006.01)  
*A61K 8/64* (2006.01)  
*A61K 8/66* (2006.01)  
*A61K 38/48* (2006.01)  
*A61K 38/29* (2006.01)  
*A61Q 7/00* (2006.01)

(57) **ABSTRACT**

Fusion proteins containing active agonist or antagonist frag-  
ments of parathyroid hormone (PTH) and parathyroid hor-  
mone related peptide (PTHrP) coupled to a collagen-binding  
domain are presented. The fusion proteins can be used to  
promote bone growth, to promote hair growth, to prevent  
cancer metastasis to bone, to promote immune reconstitution  
with a bone marrow stem cell transplant, to promote mobi-  
lization of bone marrow stem cells for collection for autolo-  
gous stem cell transplant, and to treat renal osteodystrophy.  
Pharmaceutical agents comprising a collagen-binding poly-  
peptide segment linked to a non-peptidyl PTH/PTHrP recep-  
tor agonist or antagonist are also presented.

**13 Claims, 7 Drawing Sheets**

**Specification includes a Sequence Listing.**

**Related U.S. Application Data**

20, 2013, now Pat. No. 9,062,300, which is a division of application No. 12/594,547, filed as application No. PCT/US2008/004589 on Apr. 9, 2008, now Pat. No. 8,450,273.

(60) Provisional application No. 60/922,433, filed on Apr. 9, 2007.

(56)

**References Cited**

## U.S. PATENT DOCUMENTS

8,450,273 B2 *	5/2013	Sakon .....	A61K 38/29 514/11.8
9,062,300 B2	6/2015	Gensure et al.	
9,526,765 B2	12/2016	Ponnappakkam et al.	
9,528,099 B2	12/2016	Gensure et al.	
9,579,273 B2	2/2017	Ponnappakkam et al.	
10,202,434 B2 *	2/2019	Gensure .....	A61K 38/29
10,358,471 B2 *	7/2019	Gensure .....	A61K 38/29
2002/0102709 A1	8/2002	Ishikawa et al.	
2002/0164719 A1	11/2002	Hall et al.	
2003/0187232 A1	10/2003	Hubbell et al.	
2004/0053368 A1	3/2004	Ishikawa et al.	
2004/0220094 A1	11/2004	Skinner et al.	
2005/0119183 A1	6/2005	Wells et al.	
2005/0124537 A1	6/2005	Kosternuik et al.	
2005/0180986 A1	8/2005	Rich et al.	
2006/0014687 A1	1/2006	Crine et al.	
2006/0257376 A1	11/2006	Scadden et al.	
2008/0108562 A1	5/2008	Ferring	
2009/0305352 A1	12/2009	Dai et al.	

## FOREIGN PATENT DOCUMENTS

WO	2000006195	2/2000
WO	2000049159	8/2000
WO	2003052091	6/2003
WO	2004071543	8/2004
WO	2006072623	7/2006
WO	2010087397	8/2010
WO	2011142425	11/2011
WO	2012157339	11/2012

## OTHER PUBLICATIONS

Uzawa, T. et al., "Comparison of the effects of intermittent and continuous administration of human parathyroid hormone(1-34) on rat bone," *Bone* (1995) 16(4):477-84.

Vanstone, M.B. et al., "Rapid correction of bone mass after parathyroidectomy in an adolescent with primary hyperparathyroidism," *J. Clin. Endocrinol. Metab.* (2011) 96(2): E347-50. Epub Nov. 24, 2010.

Wan, Q. et al., "Intra-articular injection of parathyroid hormone in the temporomandibular joint as a novel therapy for mandibular asymmetry," *Med Hypotheses* (2009) 74(4):685-7.

Wang, C.A. et al., "Natural history of parathyroid carcinoma. Diagnosis, treatment, and results," *Am J Surg.* (1985) 149(4):522-7.

Wang, Y. et al., "A theoretical model for simulating effect of parathyroid hormone on bone metabolism at cellular level," *Mol Cell Biomech.* (2009) 6(2):101-12.

Wang, Y. et al., "Gender differences in the response of CD-1 mouse bone to parathyroid hormone: potential role of IGF-I," *J Endocrinol.* (2006) 189(2):279-87.

Watson, P.H. et al., "Enhanced osteoblast development after continuous infusion of hPTH(1-84) in the rat," *Bone* (1999) 24(2):89-94.

Weir, E.C. et al., "Synthetic parathyroid hormone-like protein (1-74) is anabolic for bone in vivo," *Calcif Tissue Int.* (1992) 51(1):30-4.

Whitfield, J.F., "Taming Psoriatic Keratinocytes-PTHs' uses go up another notch," *J. Cell. Biochem.* (2004) 93:251-256.

Wilson, J.J. et al., "A bacterial collagen-binding domain with novel calcium-binding motif controls domain orientation," *EMBO Journal* (2003) 22(8):1743-1752.

Xu, M. et al., "Basal bone phenotype and increased anabolic responses to intermittent parathyroid hormone in healthy male COX-2 knockout mice," *Bone* (2010) 47(2):341-52. Epub May 13, 2010.

Yang, C. et al., "Effects of continuous and pulsatile PTH treatments on rat bone marrow stromal cells," *Biochem Biophys Res Commun.* (2009) 380(4):791-6. Epub Feb. 3, 2009.

Yoshihara, K. et al., "Cloning and nucleotide sequence analysis of the coIH gene from *Clostridium histolyticum* encoding a collagenase and a gelatinase," *J Bacteriol* (1994) 176:6489-6496.

Younes, N.A. et al., "Laboratory screening for hyperparathyroidism," *Clin Chim Acta.* (2005) 353(1-2):1-12.

Zang, X.Y. et al., "Effects of parathyroid hormone and estradiol on proliferation and function of human osteoblasts from fetal long bone: An in vitro study," *Chin Med J (Engl).* (1994) 107(8):600-3.

Zaruba, M.M. et al., "Parathyroid hormone treatment after myocardial infarction promotes cardiac repair by enhanced neovascularization and cell survival," *Cardiovasc Res* (2008) 77(4):722-731.

Zhou, H. et al., "Anabolic action of parathyroid hormone on cortical and cancellous bone differs between axial and appendicular skeletal sites in mice," *Bone* (2003) 32(5):513-520.

International Search Report and Written Opinion of the International Searching Authority for Application No. PCT/US08/004589 dated Oct. 28, 2008 (17 pages).

Extended European Search Report for Application No. 08742686.2 dated Aug. 4, 2010 (8 pages).

United States Patent Office Action for U.S. Appl. No. 12/594,547 dated Aug. 6, 2012 (12 pages).

Restriction Requirement for U.S. Appl. No. 14/365,226 dated Jun. 22, 2015 (8 pages).

United States Patent Office Action for U.S. Appl. No. 14/365,226 dated Nov. 24, 2015 (8 pages).

United States Patent Office Action for U.S. Appl. No. 14/365,226 dated Jun. 10, 2016 (9 pages).

Partial Supplementary European Search Report dated Oct. 1, 2015 (7 pages).

Extended European Search Report for Application No. 12857691.5 dated Feb. 8, 2016 (16 pages).

Restriction Requirement for U.S. Appl. No. 14/378,067 dated Oct. 23, 2015 (9 pages).

United States Patent Office Action for U.S. Appl. No. 14/378,067 dated Feb. 17, 2016 (16 pages).

Restriction requirement for U.S. Appl. No. 14/743,629 dated Apr. 20, 2016 (8 pages).

Podbesek, R. et al., "Effects of two treatment regimes with synthetic human parathyroid hormone fragment on bone formation and the tissue balance of trabecular bone in greyhounds," *Endocrinology* (1983) 112(3):1000-6.

Ponnappakkam, T. et al., "A fusion protein of parathyroid hormone (PTH) and a collagen binding domain shows superior efficacy and longer duration of action compared to PTH(1-34) as an anabolic bone agent in normal female mice," *Bone* (2009) 44:S35-S36.

Ponnappakkam, T., et al., "Monthly administration of a novel PTH-collagen binding domain fusion protein is anabolic in mice," *Calcif Tissue Int.* 2011;88:511-520.

Poole, K.E. et al., "Parathyroid hormone—a bone anabolic and catabolic agent," *Curr Opin Pharmacol.* (2005) 5(6):612-7. Epub Sep. 21, 2005.

Potter, L.K. et al., "Response to continuous and pulsatile PTH dosing: a mathematical model for parathyroid hormone receptor kinetics," *Bone* (2005) 37(2):159-169.

Potts, J.T., "Parathyroid hormone: past and present," *J Endocrinology* (2005) 187:311-325.

Qin, L. et al., "Parathyroid hormone: a double-edged sword for bone metabolism," *Trends Endocrinol Metab.* (2004) 15(2):60-5.

Rattanakul, C. et al., "Modeling of bone formation and resorption mediated by parathyroid hormone: response to estrogen/PTH therapy" *Biosystems* (2003) 70(1):55-72.

Richardson, M.L. et al., "Bone mineral changes in primary hyperparathyroidism," *Skeletal Radiol.* (1986) 15(2):85-95.

(56)

## References Cited

## OTHER PUBLICATIONS

- Rickard, D.J. et al., "Intermittent treatment with parathyroid hormone (PTH) as well as a non-peptide small molecule agonist of the PTH1 receptor inhibits adipocyte differentiation in human bone marrow stromal cells," *Bone* (2006) 39(6):1361-1372. Epub Aug. 10, 2006.
- Rixon, R.H. et al., "Parathyroid hormone fragments may stimulate bone growth in ovariectomized rats by activating adenylyl cyclase," *J Bone Miner Res.* (1994) 9(8):1179-89.
- Robinson, J.A. et al., "Identification of a PTH regulated gene selectively induced in vivo during PTH-mediated bone formation," *J Cell Biochem.* (2006) 98(5):2103-20.
- Rosen, C.J., "The cellular and clinical parameters of anabolic therapy for osteoporosis," *Crit Rev Eukaryot Gene Expr.* (2003) 13(1):25-38.
- Rubin, M.R. et al., "The potential of parathyroid hormone as a therapy for osteoporosis," *Int J Fertil Womens Med.* (2002) 47(3):103-15.
- Rubin, M. et al., "The anabolic effects of parathyroid hormone therapy," *Osteoporosis International* (2002) 13(4):267-277.
- Rubin, M.R. et al., "The anabolic effects of parathyroid hormone therapy," *Clin Geriatr Med.* (2003) 19(2):415-32.
- Safer, J.D. et al., "A topical parathyroid hormone/parathyroid hormone-related peptide receptor antagonist stimulates hair growth in mice," *Endocrinology* (2007) 148:1167-1170.
- Schaefer, F., "Pulsatile parathyroid hormone secretion in health and disease," *Novartis Found Symp.* (2000) 227:225-39; discussion 239-43.
- Schilli, M.B. et al., "Control of hair growth with parathyroid hormone (7-34)," *J Invest Dermatol* (1997) 108:928-932.
- Schluter, K.-D. et al., "A N-terminal PTHrP peptide fragment void of a PTH/PTHrP-receptor binding domain activates cardiac ETA receptors," *British Journal of Pharmacology* (2001) 132:427-432.
- Schmitt, C.P. et al., "Intermittent administration of parathyroid hormone (1-37) improves growth and bone mineral density in uremic rats," *Kidney Int.* (2000) 57(4):1484-92.
- Schmitt, C.P. et al., "Structural organization and biological relevance of oscillatory parathyroid hormone secretion," *Pediatr Nephrol.* (2005) 20(3):346-51. Epub Feb. 8, 2005.
- Schneider, A. et al., "Skeletal homeostasis in tissue-engineered bone," *J Orthop Res.* (2003) 21(5):859-64.
- Seeman, E. et al., "Reconstructing the skeleton with intermittent parathyroid hormone," *Trends Endocrinol Metab.* (2001) 12(7):281-3.
- Shen, V. et al., "Skeletal effects of parathyroid hormone infusion in ovariectomized rats with or without estrogen repletion," *J Bone Miner Res.* (2000) 15(4):740-6.
- Shin, H., et al. Efficacy of Interventions for Prevention of Chemotherapy-Induced Alopecia: A systematic review and meta-analysis. *International Journal of Cancer.* 2015. 136: E442-E454.
- Shinoda, Y. et al., "Mechanisms underlying catabolic and anabolic functions of parathyroid hormone on bone by combination of culture systems of mouse cells," *J. of Cellular Biology* (2010) 109(4):755-63.
- Silver, J. et al., "Harnessing the parathyroids to create stronger bones," *Curr Opin Nephrol Hypertens.* (2004) 13(4):471-6.
- Silverberg, S.J. et al., "Skeletal disease in primary hyperparathyroidism," *J Bone Miner Res.* (1989) 4(3):283-91.
- Skripitz, R. et al., "Parathyroid hormone—a drug for orthopedic surgery?," *Acta Orthop Scand.* (2004) 75(6):654-62.
- Skripitz, R. et al., "Stimulation of implant fixation by parathyroid hormone (1-34)—A histomorphometric comparison of PMMA cement and stainless steel," *J Orthop Res.* (2005) 23(6):1266-70. Epub Jun. 16, 2005.
- Smajilovic, S. et al., "Effect of intermittent versus continuous parathyroid hormone in the cardiovascular system of rats," *Open Cardiovasc. Med. J.* (2010) 4:110-6.
- Spurney, R.F. et al., "Anabolic effects of a G protein-coupled receptor kinase inhibitor expressed in osteoblasts," *J Clin Invest.* (2002) 109(10):1361-71.
- Stewart, A.F., "PTHrP(1-36) as a skeletal anabolic agent for the treatment of osteoporosis," *Bone* (1996) 19(4):303-306.
- Stracke, S. et al., "Long-term outcome after total parathyroidectomy for the management of secondary hyperparathyroidism," *Nephron Clin Pract.* (2009) 111(2):c102-9. Epub Jan. 13, 2009.
- Strewler, G.J., "Local and systemic control of the osteoblast," *J. of Clin. Invest.* (2001) 107:271-272.
- Suttamanatwong, S. et al., "Regulation of matrix Gla protein by parathyroid hormone in MC3T3-E1 osteoblast-like cells involves protein kinase a and extracellular signal-regulated kinase pathways," *J Cell Biochem.* (2007) 102(2):496-505.
- Suttamanatwong, S. et al., "Sp proteins and Runx2 mediate regulation of matrix gla protein (MGP) expression by parathyroid hormone," *J Cell Biochem.* (2009) 107(2):284-92.
- Suzuki, A. et al., "PTH/cAMP/PKA signaling facilitates canonical Wnt signaling via inactivation of glycogen synthase kinase-3beta in osteoblastic Saos-2 cells," *J Cell Biochem.* (2008) 104(1):304-17.
- Swarthout, J.T. et al., "Parathyroid hormone-dependent signaling pathways regulating genes in bone cells," *Gene* (2002) 282(1-2):1-17.
- Swarthout, J.T. et al., "Stimulation of extracellular signal-regulated kinases and proliferation in rat osteoblastic cells by parathyroid hormone is protein kinase C-dependent," *J Biol Chem.* (2001) 276(10):7586-92. Epub Dec. 6, 2000.
- Takada, H. et al., "Response of parathyroid hormone to anaerobic exercise in adolescent female athletes," *Acta Paediatr Jpn.* (1998) 40(1):73-7.
- Takasu, H. et al., "Dual signaling and ligand selectivity of the human PTH/PTHrP receptor," *J Bone Miner Res.* (1999) 14(1):11-20.
- Talmage, R.V. et al., "Calcium homeostasis: reassessment of the actions of parathyroid hormone," *Gen Comp Endocrinol.* (2008) 156(1):1-8. Epub Nov. 12, 2007.
- Tam, C.S. et al., "Parathyroid hormone stimulates the bone apposition rate independently of its resorptive action: differential effects of intermittent and continuous administration," *Endocrinology* (1982) 110(2):506-12.
- Tawfeek, H. et al., "Disruption of PTH receptor 1 in T cells protects against PTH-induced bone loss," *PLoS* (2010) 5(8):e12290.
- Tokumoto, M. et al., "Parathyroid cell growth in patients with advanced secondary hyperparathyroidism: vitamin D receptor, calcium sensing receptor, and cell cycle regulating factors," *Ther Apher Dial.* (2005) 9(Suppl 1):S27-34.
- Tollin, S.R. et al., "Serial changes in bone mineral density and bone turnover after correction of secondary hyperparathyroidism in a patient with pseudohypoparathyroidism type Ib," *J Bone Miner Res.* (2000) 15(7):1412-6.
- Abdelhadi, M. et al., "Bone mineral recovery after parathyroidectomy in patients with primary and renal hyperparathyroidism," *J Clin Endocrinol Metab.* (1998) 83(11):3845-51.
- Abe, Y. et al., "Enhancement of graft bone healing by intermittent administration of human parathyroid hormone (1-34) in a rat spinal arthrodesis model," *Bone* (2007) 41(5):775-785.
- Abshirini, H. et al., "Pathologic fractures: a neglected clinical feature of parathyroid adenoma," *Case* (2010) p. 357029. Epub Nov. 29, 2010.
- Akimoto, M. et al., "Effects of CB-VEGF-A injection in rat flap models for improved survival," (2013) *Plast. Reconstr. Surg.* 131(4):717-725.
- Aleksyniene, R. et al., "Parathyroid hormone—possible future drug for orthopedic surgery," *Medicina (Kaunas)* (2004) 40(9):842-9.
- Andrade, M.C., et al., "Bone mineral density and bone histomorphometry in children on long-term dialysis," *Pediatr Nephrol.* (2007) 22(10):1767-72. Epub Aug. 7, 2007.
- Barros, S.P., et al., "Parathyroid hormone protects against periodontitis-associated bone loss," *J Dent Res.* (2003) 82(10):791-5.
- Bedi, B., et al., "Inhibition of antigen presentation and T cell costimulation blocks PTH-induced bone loss," *Ann NY Acad Sci.* (2010) 1192:215-21.
- Belinsky, G.S. et al., "Direct measurement of hormone-induced acidification in intact bone," *J Bone Miner Res.* (2000) 15(3):550-6.

(56) **References Cited**

## OTHER PUBLICATIONS

- Bellido, T. et al., "Chronic elevation of parathyroid hormone in mice reduces expression of sclerostin by osteocytes: a novel mechanism for hormonal control of osteoblastogenesis," *Endocrinology* (2005) 146(11):4577-83. Epub Aug. 4, 2005.
- Bergenski, M.K. et al., "Parathyroid hormone stimulation of noncanonical Wnt signaling in bone," *Ann NY Acad Sci.* (2007) 1116:354-9.
- Bergwitz, C. et al., "Rapid desensitization of parathyroid hormone dependent adenylate cyclase in perfused human osteosarcoma cells (SaOS-2)," *Biochem Biophys Acta.* (1994) 1222(3):447-56.
- Bianchi, E.N. et al., "Beta-arrestin2 regulates parathyroid hormone effects on a p38 MAPK and NFkappaB gene expression network in osteoblasts" *Bone* (2009) 45(4):716-25. Epub Jun. 25, 2009.
- Bilezikian, J.P. et al., "Asymptomatic primary hyperparathyroidism: new issues and new questions—bridging the past with the future," *J Bone Miner Res.* (2002) 17(Suppl 2):N57-67.
- Bilezikian, J.P. et al., "Characterization and evaluation of asymptomatic primary hyperparathyroidism," *J Bone Miner Res.* (1991) 6(Suppl 2):S85-9; discussion S121-4.
- Blachowicz, A. et al., "Serum 1-84 and 7-84 parathyroid hormone concentrations and bone in patients with primary hyperparathyroidism," *Langenbecks Arch Surg.* (2008) 393(5):709-13. Epub Jul. 11, 2008.
- Buargub, M.A. et al., "Prevalence and pattern of renal osteodystrophy in chronic hemodialysis patients: a cross sectional study of 103 patients," *Saudi J Kidney Dis Transpl.* (2006) 17(3):401-7.
- Calvi, L.M. et al., "Activated parathyroid hormone/parathyroid hormone-related protein receptor in osteoblastic cells differentially affects cortical and trabecular bone," *J. Clin. Invest.* (2001)107:277-286.
- Calvi, L.M. et al., "Osteoblastic cells regulate the haematopoietic stem cell niche," *Nature* (2003) 425:841-846.
- Canalis, E., "Effect of hormones and growth factors on alkaline phosphatase activity and collagen synthesis in cultured rat calvariae," *Metabolism* (1983) 32(1):14-20.
- Canalis, E. et al., "Insulin-like growth factor I mediates selective anabolic effects of parathyroid hormone in bone cultures," *J Clin Invest.* (1989) 83(1):60-5.
- Carter, P.H. et al., "Selective and Nonselective Inverse Agonists for Constitutively Active Type-1 Parathyroid Hormone Receptors: Evidence for Altered Receptor Conformations," *Endocrinology* (2001) 142(4):1534-1545.
- Chan, H.W. et al., "Prospective study on dialysis patients after total parathyroidectomy without autograft," *Nephrology* (2009) 15(4):441-7.
- Chen, B. et al., "Homogeneous osteogenesis and bone regeneration by demineralized bone matrix loading with collagen-targeting bone morphogenetic protein-2," *Biomaterials* (2007) 28:1027-1035.
- Chen, Q. et al., "Effects of an excess and a deficiency of endogenous parathyroid hormone on volumetric bone mineral density and bone geometry determined by peripheral quantitative computed tomography in female subjects," *J Clin Endocrinol Metab.* (2003) 88(10):4655-8.
- Cherian, P.P. et al., "Role of gap junction, hemichannels, and connexin 43 in mineralizing in response to intermittent and continuous application of parathyroid hormone," *Cell Commun Adhes.* (2008) 15(1):43-54.
- Chevalley, T. et al., "Bone and hormones. Effects of parathyroid hormone on the bone," *Presse Med.* (1999) 28(10):547-53.
- Cohen, A. et al., "Osteoporosis in adult survivors of adolescent cardiac transplantation may be related to hyperparathyroidism, mild renal insufficiency, and increased bone turnover," *J Heart Lung Transplant.* (2005) 24(6):696-702.
- Compston, J.E., "Skeletal actions of intermittent parathyroid hormone: effects on bone remodelling and structure," *Bone* (2007) 40(6):1447-1452.
- Cormier, C., "Parathyroid hormone in osteoporosis," *Presse Med.* (2006) 35(3 Pt 2):495-501.
- Corsi, A. et al., "Osteomalacic and hyperparathyroid changes in fibrous dysplasia of bone: core biopsy studies and clinical correlations," *J Bone Miner Res.* (2003) 18(7):1235-46.
- Cosman, F., "Parathyroid hormone treatment for osteoporosis," *Current Opinion in Endocrinology, Diabetes & Obesity* (2008) 15:495-501.
- Cundy, T. et al., "Hyperparathyroid bone disease in chronic renal failure," *Ulster Med J.* (1985) 54(Suppl):S34-43.
- Datta, N.S. et al., "Distinct roles for mitogen-activated protein kinase phosphatase-1 (MKP-1) and ERK-MAPK in PTH1R signaling during osteoblast proliferation and differentiation," *Cell* (2010) 22(3):457-66. Epub.
- Deal, C., "The use of intermittent human parathyroid hormone as a treatment for osteoporosis," *Curr Rheumatol Rep.* (2004) 6(1):49-58.
- Demiralp, B. et al., "Anabolic actions of parathyroid hormone during bone growth are dependent on c-fos," *Endocrinology* (2002) 143(10):4038-47.
- Dobnig, H. et al., "The effects of programmed administration of human parathyroid hormone fragment (1-34) on bone histomorphometry and serum chemistry in rats," *Endocrinology* (1997) 138(11):4607-12.
- Drake, M.T. et al., "Parathyroid hormone increases the expression of receptors for epidermal growth factor in UMR 106-01 cells," *Endocrinology* (1994) 134(4):1733-7.
- Endo, K. et al., "1,25-dihydroxyvitamin D3 as well as its analogue OCT lower blood calcium through inhibition of bone resorption in hypercalcemic rats with continuous parathyroid hormone-related peptide infusion," *J Bone Miner Res.* (2000) 15(1):175-81.
- Etoh, M. et al., "Repetition of continuous PTH treatments followed by periodic withdrawals exerts anabolic effects on rat bone," *J Bone Miner Metab.* (2010) 28(6):641-649.
- Farhanigan, M.E., et al. Treatment of Alopecia Areata in the United States: A Retrospective Cross-Sectional Study, *J Drugs Dermatology.* 2015 14(9):1012-4.
- Fitzpatrick, L.A. et al., "Acute primary hyperparathyroidism," *Am J Med.* (1987) 82(2):275-82.
- Fleming, A. et al., "High-throughput in vivo screening for bone anabolic compounds with zebrafish," *J Biomol Screen.* (2005) 10(8):823-31. Epub Oct. 18, 2005.
- Fouda, M.A., "Primary hyperparathyroidism: King Khalid University Hospital Experience," *Ann Saudi Med.* (1999) 19(2):110-5.
- Fox, J. et al., "Effects of daily treatment with parathyroid hormone 1-84 for 16 months on density, architecture and biomechanical properties of cortical bone in adult ovariectomized rhesus monkeys," *Bone* (2007) 41(3):321-330.
- Fraher, L.J. et al., "Comparison of the biochemical responses to human parathyroid hormone-(1-31)NH<sub>2</sub> and hPTH-(1-34) in healthy humans," *J Clin Endocrinol Metab.* (1999) 84(8):2739-43.
- Frolik, C.A. et al., "Anabolic and catabolic bone effects of human parathyroid hormone (1-34) are predicted by duration of hormone exposure," *Bone* (2003) 33(3):372-379.
- Fujita, T., "Parathyroid hormone in the treatment of osteoporosis," *BioDrugs* (2001) 15(11):721-728.
- Li, X. et al., "Determination of dual effects of parathyroid hormone on skeletal gene expression in vivo by microarray and network analysis," *J Biol Chem.* (2007) 282(45):33086-97. Epub Aug. 9, 2007.
- Li, X. et al., "In vivo parathyroid hormone treatments and RNA isolation and analysis," *Methods Mol Biol.* (2008) 455:79-87.
- Liu, J. et al., "Intermittent PTH administration: a novel therapy method for periodontitis-associated alveolar bone loss," *Med Hypotheses.* (2009) 72(3):294-6. Epub Nov. 30, 2008.
- Locklin, R.M. et al., "Mediators of the biphasic responses of bone to intermittent and continuously administered parathyroid hormone," *J Cell Biochem.* (2003) 89(1):180-90.
- Locus BAA06251 (GI 710023), Collagenase precursor from *Clostridium histolyticum*, Jan. 30, 2003. This amino acid sequence is disclosed in this application as SEQ ID No. 6. The sequence of residues 901-1021 of BAA06251 corresponds to the collagen binding domain included in the fusion protein of SEQ ID No. 1.

(56)

## References Cited

## OTHER PUBLICATIONS

- Locus EAW68494 (GI 119588900), Parathyroid hormone isoform from *Homo sapiens*, Dec. 18, 2006. Residues 64-147 of EAW68494 correspond to the PTH of SEQ ID No. 7.
- Lotinun, S. et al., "Differential effects of intermittent and continuous administration of parathyroid hormone on bone histomorphometry and gene expression," *Endocrine*. (2002) 17(1):29-36.
- Lotinun, S. et al., "Triazolopyrimidine (trapidil), a platelet-derived growth factor antagonist, inhibits parathyroid bone disease in an animal model for chronic hyperparathyroidism," *Endocrinology*. (2003) 144(5):2000-7.
- Lumachi, F. et al., "Lumbar spine bone mineral density changes in patients with primary hyperparathyroidism according to age and gender," *Ann N Y Acad Sci*. (2007) 1117:362-6. Epub Jul. 26, 2007.
- Ma, Y.L. et al., "Catabolic effects of continuous human PTH (1-38) in vivo is associated with sustained stimulation of RANKL and inhibition of osteoprotegerin and gene-associated bone formation," *Endocrinology* (2001) 142(9):4047-54.
- Machado Do Reis, L. et al., "Accentuated osteoclastic response to parathyroid hormone undermines bone mass acquisition in osteonectin-null mice," *Bone* (2008) 43(2):264-73. Epub Apr. 13, 2008.
- Malluche, H.H. et al., "Endogenous calcitonin does not protect against hyperparathyroid bone disease in renal failure," *Miner. Electrolyte Metab.* (1986) 12(2):113-8.
- Malluche, H.H. et al., "Osteomalacia and hyperparathyroid bone disease in patients with nephrotic syndrome," *J Clin Invest.* (1979) 63(3):494-500.
- Malluche, H.H. et al., "Influence of the parathyroid glands on bone metabolism," *Eur J Clin Invest.* (2006) 36(Suppl 2):23-33.
- Malluche, H.H. et al., "Effects of long-term infusion of physiologic doses of 1-34 PTH on bone" *Am J Physiol.* (1982) 242(2):F197-201.
- Masi, L. et al., "Molecular, biochemical and cellular biology of PTH anabolic action," *J Endocrinol Invest.* (2005) 28(8 Suppl):37-40.
- Mathias, R. et al., "Renal bone disease in pediatric and young adult patients on hemodialysis in a children's hospital," *J Am Soc Nephrol.* (1993) 3(12):1938-46.
- Matsushita, O. et al., "A study of the collagen-binding domain of a 116-kDa Clostridium histolyticum collagenase," *J Biological Chem* (1998) 273(6):3643-3648.
- Matsushita, O. et al., "Gene duplication and multiplicity of C. Histolyticum collagenases," *J. Bacteriol.* (1999) 181:923-933.
- Matsushita, O. et al., "Substrate recognition by the collagen-binding domain of Clostridium histolyticum class I collagenase," *J of Biological Chem* (2001) 276(12):8761-8770.
- Matsushita, O., "Studies on the Clostridial Collagenases," *Nippon Saikingaku Zasshi* (1999) 54(4):753-761.
- McCauley, L.K. et al., "PTH/PTHrP receptor is temporally regulated during osteoblast differentiation and is associated with collagen synthesis," *J Cell Biochem* (1996) 61:638-647.
- McCAULEY, L.K. et al., "Proto-oncogene c-fos is transcriptionally regulated by parathyroid hormone (PTH) and PTH-related protein in a cyclic adenosine monophosphate-dependent manner in osteoblastic cells," *Endocrinology* (1997) 138(12):5427-33.
- McCauley, L.K. et al., "Parathyroid hormone stimulates fra-2 expression in osteoblastic cells in vitro and in vivo," *Endocrinology* (2001) 142(5):1975-81.
- Minisola, S. et al., "Trabecular bone mineral density in primary hyperparathyroidism: relationship to clinical presentation and biomarkers of skeletal turnover," *Bone Miner.* (1993) 20(2):113-23.
- Minisola, S. et al., "Uneven deficits in vertebral bone density in postmenopausal patients with primary hyperparathyroidism as evaluated by posterior-anterior and lateral dual-energy absorptiometry," *Osteoporos Int.* (2002) 13(8):618-23.
- Mitlak, B.H. et al., "Asymptomatic primary hyperparathyroidism," *J Bone Miner Res.* (1991) 6(Suppl 2):S103-10; discussion S121-4.
- Miyachi, Y. et al., "Long-term safety and efficacy of high-concentration (20 mug/g) tacalcitol ointment in psoriasis vulgaris," *Eur J Dermatol* (2002) 12(5):463-468.
- Morley, P. et al., "Anabolic effects of parathyroid hormone on bone," *Trends Endocrinol. Metab.* (1997) 8(6):225-31.
- Morley, P. et al., "Parathyroid hormone: an anabolic treatment for osteoporosis," *Curr Pharm Des.* (2001) 7(8):671-87.
- Murray, E.J. et al., "E64d, a membrane-permeable cysteine protease inhibitor, attenuates the effects of parathyroid hormone on osteoblasts in vitro," *Metabolism* (1997) 46(9):1090-4.
- Nasu, M. et al., "Stimulatory effects of parathyroid hormone and 1,25-dihydroxyvitamin D3 on insulin-like growth factor-binding protein-5 mRNA expression in osteoblastic UMR-106 cells: the difference between transient and continuous treatments," *FEBS Lett.* (1997) 409(1):63-6.
- Neer, R.M. et al., "Effect of parathyroid hormone (1-34) on fractures and bone mineral density in postmenopausal women with osteoporosis," *N. Engl. J. Med.* (2001) 344(19):1434-1441.
- Nemeth, E.F., "Pharmacological regulation of parathyroid hormone secretion," *Curr Pharm. Des.* (2002) 8(23):2077-87.
- Nilsson, P., "Bone disease in renal failure. Clinical and histomorphometric studies," *Scand J Urol Nephrol Suppl.* (1984) 84:1-68.
- Nishi, N. et al., "Collagen-binding growth factors: Production and characterization of functional fusion proteins having a collagen-binding domain," *PNAS* (1998) 95(12):7018-7023.
- O'Brien, C.A. et al., "IL-6 is not required for parathyroid hormone stimulation of RANKL expression, osteoclast formation, and bone loss in mice," *Am J Physiol Endocrinol Metab.* (2005) 289(5):E784-93. Epub Jun. 14, 2005.
- Okazaki, R., "Parathyroid hormone—its mechanisms of action and issues on clinical application," *Clin Calcium.* (2005) 15(5):845-51.
- Olgaard, K. et al., "Can hyperparathyroid bone disease be arrested or reversed?," *Clin J Am Soc Nephrol.* (2006) 1(3):367-73. Epub Mar. 29, 2006.
- Onyia, J.E. et al., "Molecular profile of catabolic versus anabolic treatment regimens of parathyroid hormone (PTH) in rat bone: an analysis by DNA microarray," *J Cell Biochem.* (2005) 95(2):403-18.
- Owens, R.J. et al., "Mapping the collagen-binding site of human fibronectin by expression in *Escherichia coli*," *The EMBO Journal* (1986) 5(11):2825-2830.
- Paillard, M. et al., "Determinants of parathormone secretion in primary hyperparathyroidism," *Horm Res.* (1989) 32(1-3):89-92.
- Parfitt, A.M., "The actions of parathyroid hormone on bone: relation to bone remodeling and turnover, calcium homeostasis, and metabolic bone disease. Part IV of IV parts: The state of the bones in uremic hyperparathyroidism—the mechanisms of skeletal resistance to PTH in renal failure and pseudohypoparathyroidism and the role of PTH in osteoporosis, osteopetrosis, and osteofluorosis," *Metabolism.* (1976) 25(10):1157-88.
- Parfitt, A.M. et al., "Hypercalcemia due to constitutive activity of the parathyroid hormone (PTH)/PTH-related peptide receptor: comparison with primary hyperparathyroidism," *J Clin Endocrinol Metab.* (1996) 81(10):3584-8.
- Peters, E.M.J. et al., "A new strategy for modulating chemotherapy-induced alopecia, using PTH/PTHrP receptor agonist and antagonist," *J Invest Dermatol* (2001) 117(2):173-178.
- Pettway, et al., "Anabolic actions of PTH (1-34): Use of a novel tissue engineering model to investigate temporal effects on bone," *Bone* (2005) 36(6):959-970.
- Phelps, E. et al., "Parathyroid hormone induces receptor activity modifying protein-3 (RAMP3) expression primarily via 3',5'-cyclic adenosine monophosphate signaling in osteoblasts," *Calcif Tissue Int.* (2005) 77(2):96-103. Epub Aug. 11, 2005.
- Pirih, F.Q. et al., "Parathyroid hormone induces the NR4A family of nuclear orphan receptors in vivo," *Biochem Biophys Res Commun.* (2005) 332(2):494-503.
- Fukayama, S. et al., "New insights into interactions between the human PTH/PTHrP receptor and agonist/antagonist binding," *Am. J. Physiol. Endocrinol. Metab.* (1998) 274:297-303.
- Gao, Y. et al., "T cells potentiate PTH-induced cortical bone loss through CD40L signaling," *Cell Metab.* (2008) 8(2):132-45.
- Gardella, T.J. et al., "Converting Parathyroid Hormone-related Peptide (PTHrP) into a Potent PTH-2 Receptor Agonist," *J. of Biological Chemistry,* (1996) 271(33):19888-19893.

(56)

## References Cited

## OTHER PUBLICATIONS

Gensure, R.C. et al., "Parathyroid hormone and parathyroid hormone-related peptide, and their receptors," *Biochem Biophys Res Commun.* (2005) 328(3):666-78.

Gensure, R.C. et al., "Parathyroid hormone without parathyroid glands," *Endocrinology* (2005) 146(2):544-546.

Gevers, E.F. et al., "Bone marrow adipocytes: a neglected target tissue for growth hormone," *Endocrinology* (2002) 143(10):4065-73.

Goltzman, D., "Studies on the mechanisms of the skeletal anabolic action of endogenous and exogenous parathyroid hormone," *Arch Biochem Biophys.* (2008) 473(2):218-24. Epub Mar. 10, 2008.

Gopalakrishnan, R. et al., "Role of matrix Gla protein in parathyroid hormone inhibition of osteoblast mineralization," *Cells Tissues Organs* (2005) 181(3-4):166-75.

Gosavi, A. et al., "An unusual presentation of parathyroid adenoma—a case report," *Indian J Pathol Microbiol.* (2005) 48(2):208-10.

Gu, W.X. et al., "Mutual up-regulation of thyroid hormone and parathyroid hormone receptors in rat osteoblastic osteosarcoma 17/2.8 cells," *Endocrinology* (2001) 142(1):157-64.

Hall, A.K. et al., "The effects of parathyroid hormone on osteoblast-like cells from embryonic chick calvaria," *Acta Endocrinol (Copenh).* (1985) 108(2):217-23.

Han, B. et al., "Collagen-targeted BMP3 fusion proteins arrayed on collagen matrices or porous ceramics impregnated with Type I collagen enhance osteogenesis in a rat cranial defect model," *J Orthopaedic Research* (2002) 20:747-755.

Headley, C.M., "Hungry bone syndrome following parathyroidectomy," *Anna J.* (1998) 25(3):283-9; quiz 290-1.

Heath, H., 3rd, "Clinical spectrum of primary hyperparathyroidism: evolution with changes in medical practice and technology," *J Bone Miner Res.* (1991) 6(Suppl 2):S63-70; discussion S83-4.

Hoare, S.R. et al., "Specificity and stability of a new PTH1 receptor antagonist, mouse TIP(7-39)," *Peptides* (2002) 23(5):989-998.

Hock, J.M. et al., "Human parathyroid hormone-(1-34) increases bone mass in ovariectomized and orchidectomized rats," *Endocrinology* (1988) 122(6):2899-2904.

Hock, J.M. et al., "Effects of continuous and intermittent administration and inhibition of resorption on the anabolic response of bone to parathyroid hormone," *J Bone Miner Res.* (1992) 7(1):65-72.

Holick, M.F. et al., "Topical PTH (1-34) is a novel, safe and effective treatment for psoriasis: a randomized self-controlled trial and an open trial," (2003) *British J. Dermatology* 149:370-376.

Homme, M. et al., "Differential regulation of RGS-2 by constant and oscillating PTH concentrations," *Calcif Tissue Int.* (2009) 84(4):305-12. Epub Feb. 20, 2009.

Horwitz, M.J. et al., "Parathyroid hormone-related protein for the treatment of postmenopausal osteoporosis: defining the maximal tolerable dose," *J Clin Endocrinol Metab.* (2010) 95(3):1279-87.

Horwitz, M.J. et al., "Continuous PTH and PTHrP infusion causes suppression of bone formation and discordant effects on 1,25(OH)<sub>2</sub> vitamin D," *J Bone Miner Res.* (2005) 20(10):1792-803. Epub Jun. 6, 2005.

Hruska, K.A. et al., "Regulation of skeletal remodeling by parathyroid hormone," *Contrib Nephrol.* (1991) 91:38-42.

Iida-Klein, A. et al., "Short-term continuous infusion of human parathyroid hormone 1-34 fragment is catabolic with decreased trabecular connectivity density accompanied by hypercalcemia in C57BL/6 mice," *J Endocrinol.* (2005) 186(3):549-57.

Ishii, H. et al., "Daily intermittent decreases in serum levels of parathyroid hormone have an anabolic-like action on the bones of uremic rats with low-turnover bone and osteomalacia," *Bone* (2000) 26(2):175-82.

Ishikawa, T. et al., "Delivery of a growth factor fusion protein having collagen-binding activity to wound tissues," *Artif. Organs* (2003) 27(2):147-154.

Ishikawa, T. et al., "Production of a biologically active epidermal growth factor fusion protein with high collagen affinity," *J. Biochem.* (2001) 129(4):627-633.

Ishizuya, T. et al., "Parathyroid hormone exerts disparate effects on osteoblast differentiation depending on exposure time in rat osteoblastic cells," *J Clin Invest.* (1997) 99(12):2961-70.

Ito, M., "Parathyroid hormone and bone quality," *Clin Calcium.* (2005) 15(12):31-7.

Ito, M., "Parathyroid and bone: Effect of parathyroid hormone on bone quality," *Clin Calcium.* (2007) 17(12):1858-64.

Jeon, E. et al., "Engineering and application of collagen-binding fibroblast growth factor 2 for sustained release," (2013) *J. of Biomed. Materials Research: Part A.*

Jilka, R.L., "Molecular and cellular mechanisms of the anabolic effect of intermittent PTH," *Bone* (2007) 40(6):1434-1446. Epub Apr. 6, 2007.

Jilka, R.L. et al., "Continuous elevation of PTH increases the number of osteoblasts via both osteoclast-dependent and -independent mechanisms," *J Bone Miner Res.* (2010) 25(11):2427-37.

Kaji, H., "Parathyroid and bone: Effects of parathyroid hormone on bone resorption and formation: differences between intermittent and continuous treatment," *Clin Calcium.* (2007) 17(12):1836-42.

Katikaneni et al., "Therapy for alopecia areata in mice using parathyroid hormone agonists and antagonists, linked to a collagen-binding domain," *J. of Investigative Dermatology Symposium Proceedings*, (2013) 16(1):S61-S62.

Katikaneni R., et al. Parathyroid hormone linked to a collagen binding domain (PTH-CBD) promotes hair growth in a mouse model of chemotherapy-induced alopecia in a dose-dependent manner. *Anticancer Drugs.* 2014. 25(7): 819-825.

Katikaneni, R. et al. Treatment and Prevention of Chemotherapy-induced alopecia with PTH-CBD, a collagen targeted parathyroid hormone analog, in a non-depilated mouse model. *Anticancer Drugs.* 2014. 25(1): 30-38.

Katikaneni, R. et al. Therapy for alopecia areata in Mice by Stimulating the Hair Cycle with Parathyroid Hormone Agonists Linked to a Collagen-Binding Domain. *The Journal of Investigative Dermatology Symposium.* 2015. 17: 13-15.

Kaye, M. et al., "Elective total parathyroidectomy without autotransplant in end-stage renal disease," *Kidney Int.* (1989) 35(6):1390-9.

Khan, A. et al., "Primary hyperparathyroidism: pathophysiology and impact on bone," *Cmaj.* (2000) 163(2):184-7.

Kido, S. et al., "Mechanism of PTH actions on bone," *Clin Calcium.* (2003) 13(1):14-8.

Kistler, H., "Primary hyperparathyroidism: an analysis of 152 patients with special references to acute life threatening complications (acute hyperparathyroidism)," *Schweiz Med Wochenschr.* (1976) 106(Suppl 3):1-61.

Kitazawa, R. et al., "Effects of continuous infusion of parathyroid hormone and parathyroid hormone-related peptide on rat bone in vivo: comparative study by histomorphometry," *Bone Miner.* (1991) 12(3):157-66.

Klempa, I., "Treatment of secondary and tertiary hyperparathyroidism—surgical viewpoints," *Chimrg.* (1999) 70(10):1089-101.

Koh, A.J. et al., "3',5'-Cyclic adenosine monophosphate activation in osteoblastic cells: effects on parathyroid hormone-1 receptors and osteoblastic differentiation in vitro," *Endocrinology* (1999) 140(7):3154-62.

Komarova, S.V., "Mathematical model of paracrine interactions between osteoclasts and osteoblasts predicts anabolic action of parathyroid hormone on bone," *Endocrinology.* (2005) 146(8):3589-95. Epub Apr. 28, 2005.

Kousteni, S. et al., "The cell biology of parathyroid hormone in osteoblasts," *Curr Osteoporos. Rep.* (2008) 6(2):72-6.

Kroll, M.H., "Parathyroid hormone temporal effects on bone formation and resorption," *Bull Math Biol.* (2000) 62(1):163-88.

Lemaire, V. et al., "Modeling the interactions between osteoblast and osteoclast activities in bone remodeling," *J Theor Biol.* (2004) 229(3):293-309.

\* cited by examiner

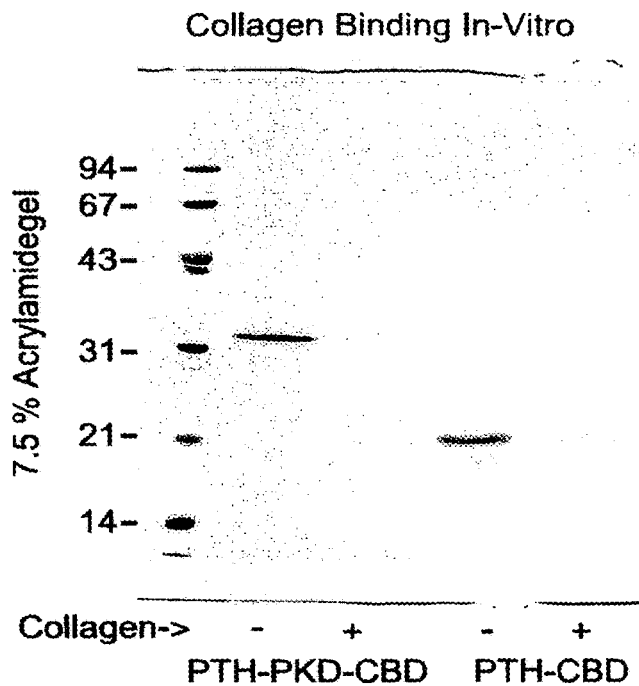


Fig. 1

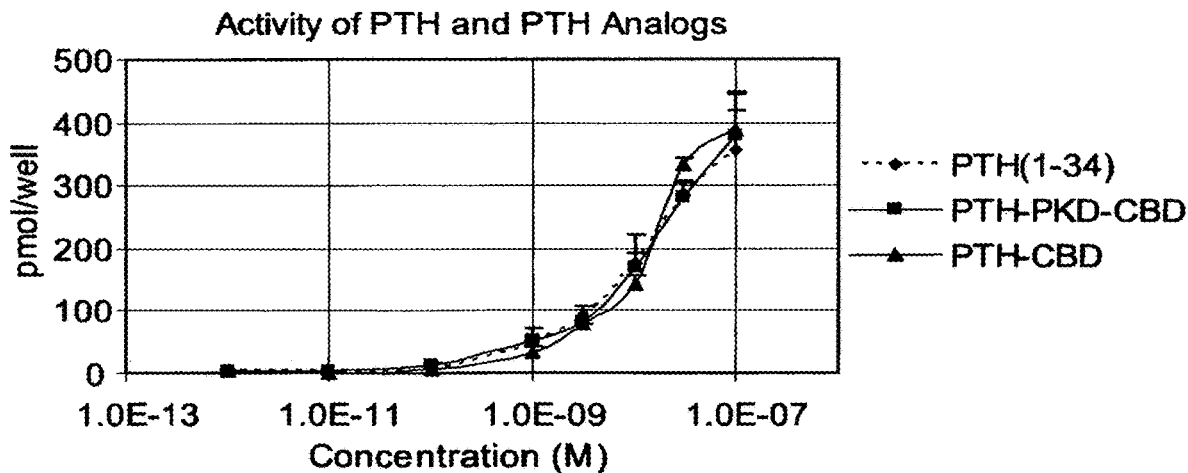
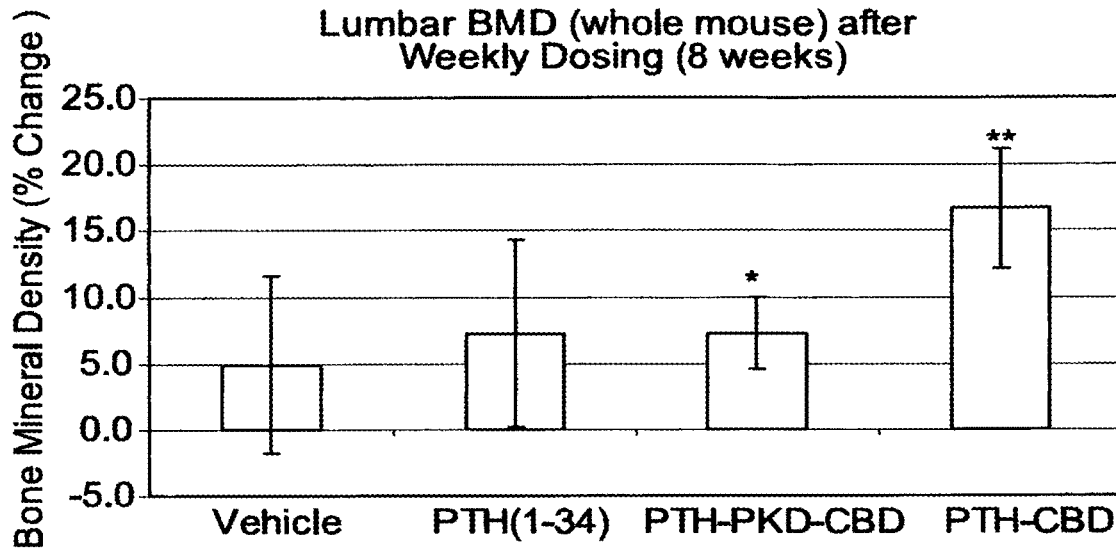
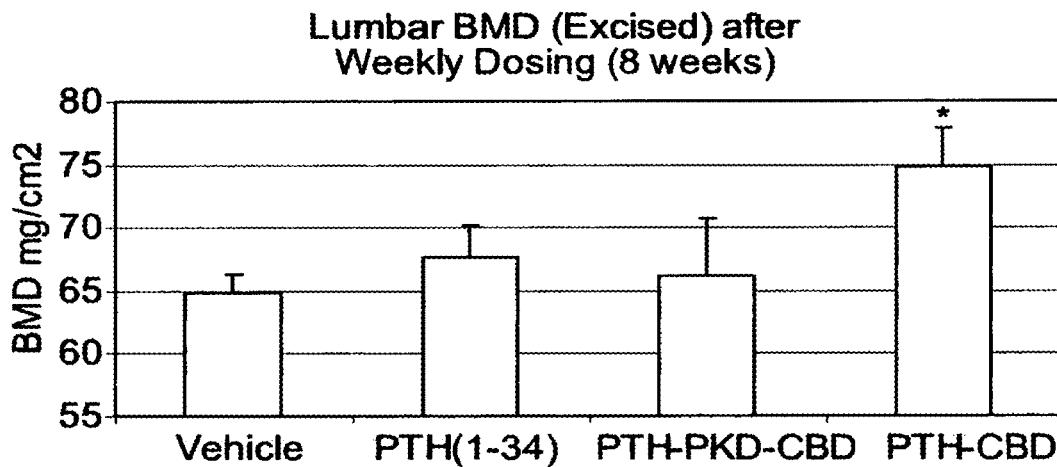


Fig. 2





**Fig. 3**



**Fig. 4**

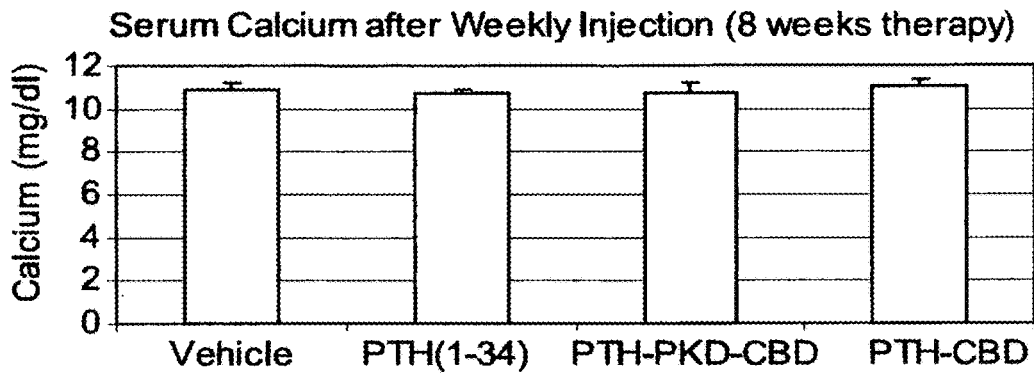


Fig. 5

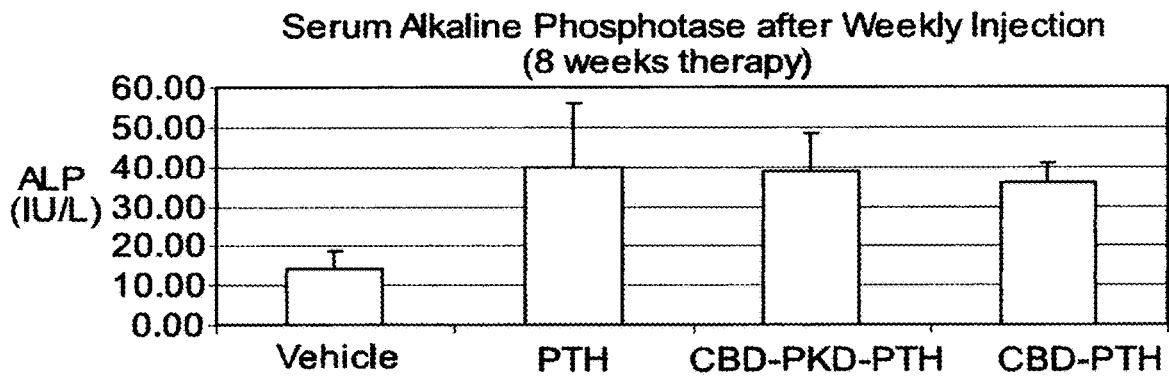


Fig. 6

Proximal Tibia, H&E Staining (8 weeks)

Vehicle

PTH-CBD



Fig. 7

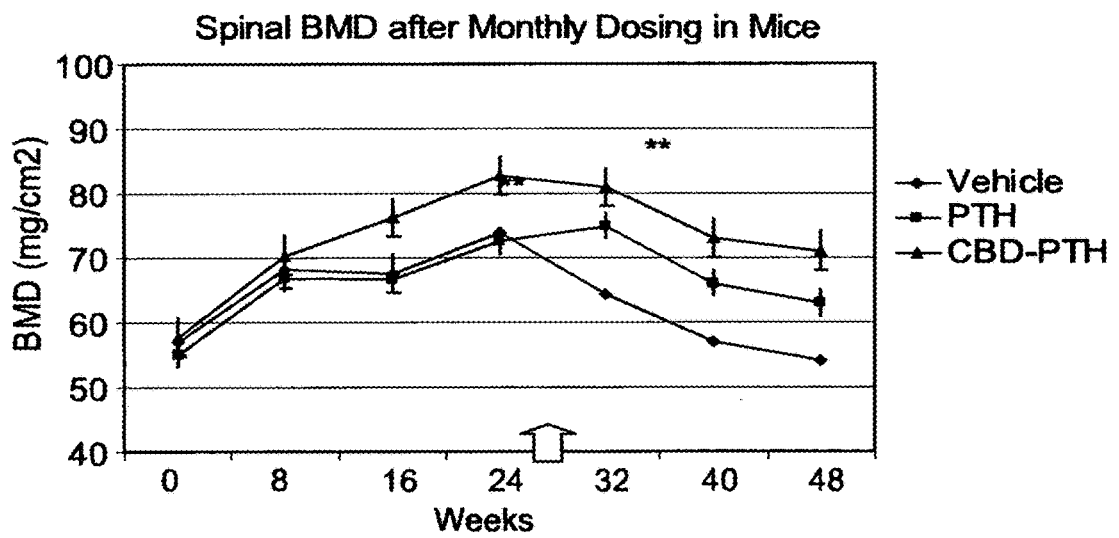


Fig. 8

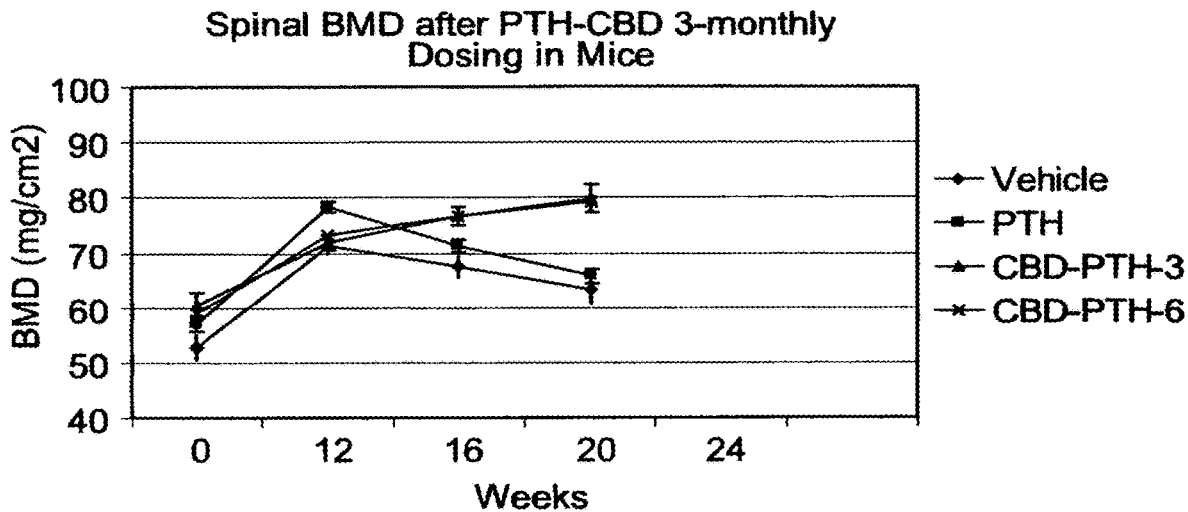


Fig. 9

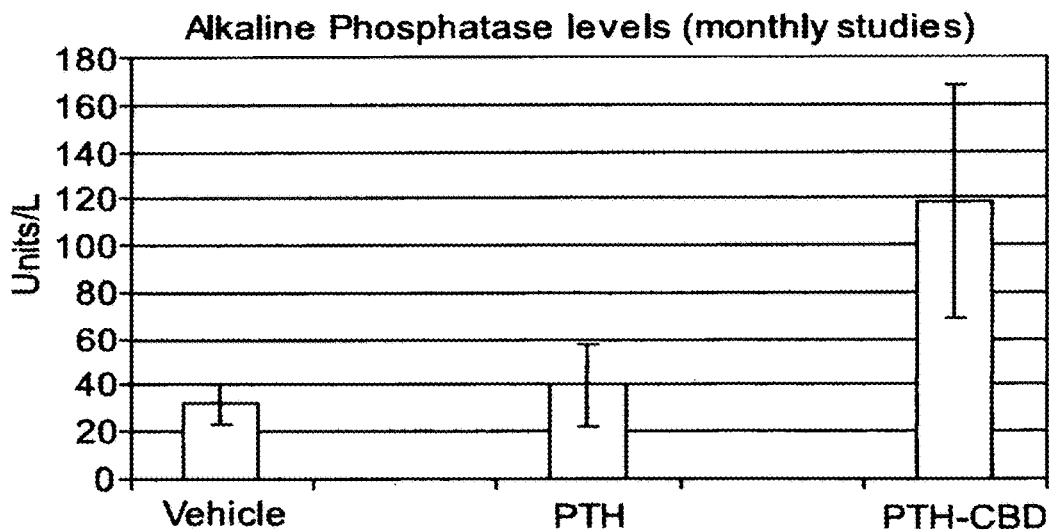
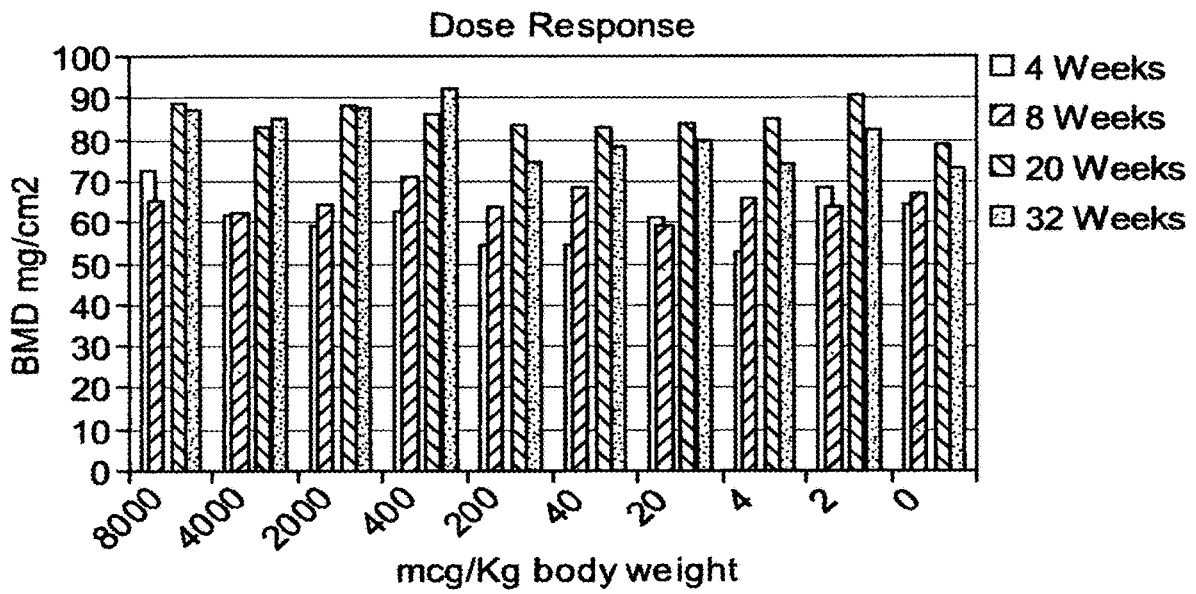
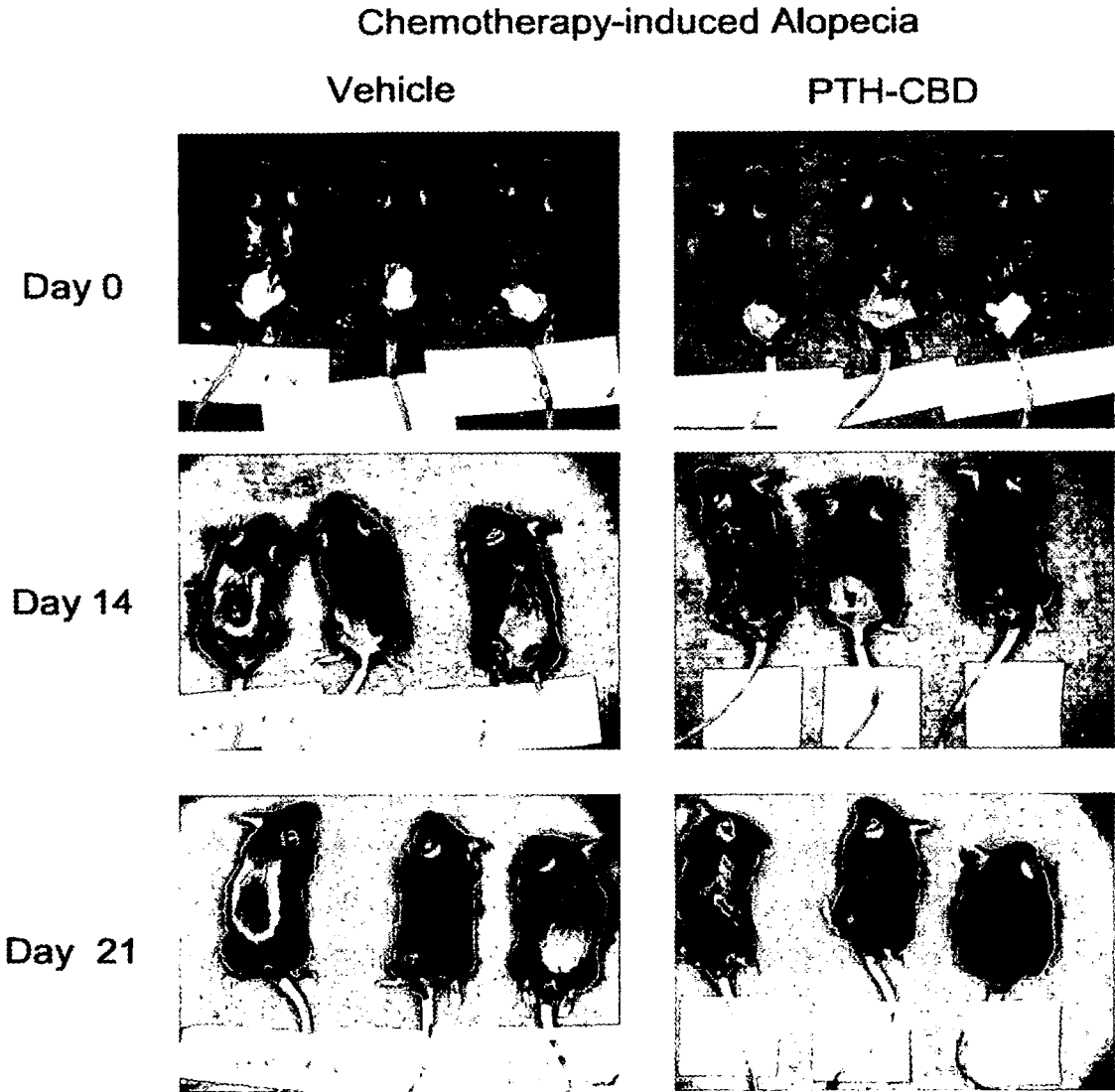


Fig. 10



**Fig. 11**



**Fig. 12**

## FUSION PROTEINS OF COLLAGEN-BINDING DOMAIN AND PARATHYROID HORMONE

### CROSS-REFERENCE TO RELATED APPLICATIONS

This patent application is a continuation of U.S. application Ser. No. 16/249,540 filed Jan. 16, 2019 (and issuing as U.S. Pat. No. 10,358,471 on Jul. 23, 2019) which is a continuation of U.S. application Ser. No. 15/387,817 filed Dec. 22, 2016 (U.S. Pat. No. 10,202,434, issued Feb. 12, 2019) which is a continuation of U.S. application Ser. No. 14/743,629 filed Jun. 18, 2015 (U.S. Pat. No. 9,528,099, issued Dec. 27, 2016) which is a divisional patent application of U.S. application Ser. No. 13/898,058 filed May 20, 2013 (U.S. Pat. No. 9,062,300, issued Jun. 23, 2015), which is a divisional application of U.S. 371 application Ser. No. 12/594,547 filed Oct. 2, 2009 (U.S. Pat. No. 8,450,273, issued May 28, 2013), which is a national stage filing under U.S.C. 371 of International Application No. PCT/US2008/004589 filed Apr. 9, 2008, which claims the benefit of priority of U.S. Provisional Patent Application No. 60/922,433 filed Apr. 9, 2007, all of which are incorporated herein by reference in their entirety.

### REFERENCE TO SEQUENCE LISTING SUBMITTED VIA EFS-WEB

This application is being filed electronically via EFS-Web and includes an electronically submitted Sequence Listing in .txt format. The .txt file contains a sequence listing entitled "2016-12-22\_5965-00077\_ST25" created on Dec. 22, 2016 and is 35,340 bytes in size. The Sequence Listing contained in this .txt file is part of the specification and is incorporated by reference herein in its entirety.

### BACKGROUND

Osteoporosis is a bone disease characterized by thinning of bone tissue and loss of bone density over time. It is widely prevalent in the elderly. The National Osteoporosis Foundation estimates that by 2020 nearly 14 million Americans will suffer from osteoporosis. An additional 18 million may have low bone mass, or osteopenia. Osteoporosis can occur either because the body fails to make enough new bone or reabsorbs too much old bone, or both.

Osteoporosis often progresses painlessly until a bone breaks. Any bone can be affected, but one of principal concern is the hip. A hip fracture impairs a person's ability to walk and causes prolonged and sometimes permanent disability.

Osteoporosis can be treated with anabolic therapies or antiresorptive therapies. Anabolic therapies build new bone. But antiresorptive therapies do not. Instead they slow the resorption of existing bone. A major factor in the control of bone remodeling is parathyroid hormone (PTH). PTH and its analogs are the only class of anabolic therapeutics with proven clinical efficacy. Teriparatide is an approved therapeutic that is a shortened version of PTH. It consists of the N-terminal 34 amino acid residues of mature PTH (PTH(1-34)). Teriparatide is administered by once daily subcutaneous injection.

PTH is an 84-amino acid peptide. It is involved in mineral ion homeostasis. Increased PTH mobilizes calcium from bone in response to calcium deficient diets or vitamin D insufficiency. PTH also affects osteoblasts and stromal cells.

Although hyperparathyroidism is associated with bone loss, PTH administration causes bone gain. PTH binds to receptors on osteoblasts, specialized bone cells that synthesize bone, and this appears to prolong osteoblast life and increase osteoblast activity, causing bone gain.

PTH-related peptide (PTHrP) is a 141-amino acid protein that is homologous to PTH over its first 13 amino acids but diverges thereafter (1-3). PTH and PTHrP act through a common PTH/PTHrP receptor.

New treatments for osteoporosis are needed. Improved methods to deliver PTH, teriparatide, or other PTH/PTHrP receptor agonist agents are needed.

### SUMMARY

One embodiment disclosed herein involves compositions or bioactive agents comprising a collagen-binding polypeptide segment linked to a PTH/PTHrP receptor agonist. The inventors have constructed fusion proteins containing residues 1-33 of PTH, an active agonist fragment of PTH, fused to a collagen-binding domain (CBD) of ColH, a collagenase from *Clostridium histolyticum*. The inventors have found that the fusion protein is more active than PTH(1-34) in promoting bone growth in vivo in mice, even when administered systemically. With local administration to, for instance, a fracture site, the difference in efficacy is expected to be even greater. Peptides that are antagonists of the PTH/PTHrP receptor can also be coupled to a CBD for targeted and enhanced bioactivity.

Compositions or bioactive agents containing a collagen-binding polypeptide segment coupled to a non-peptidyl agonist or antagonist of the PTH/PTHrP receptor are also presented.

Collagen is the most abundant protein in mammals. It is the major protein component of bone and cartilage. A CBD-bioactive agent fusion protein thus targets the bioactive agent to collagen, and generally to bone and cartilage. The CBD-PTH fusion proteins have longer half-lives than PTH because of their stable binding to collagen, which tends to remove them from circulation. They can be administered locally, for instance, at a fracture site, and will tend to remain at the site of administration through binding to collagen at or near the site of administration. In support of this longer half-life, a fusion protein containing epidermal growth factor (EGF) with a CBD was shown to have much longer half life than EGF alone (8). Data is also presented in Examples 4 and 5 herein showing that a PTH-CBD fusion protein administered weekly or monthly is as effective or more effective than PTH(1-34) administered daily.

One embodiment provides a composition comprising: a collagen-binding polypeptide segment linked to a PTH/PTHrP receptor agonist; wherein the collagen-binding polypeptide segment is a bacterial collagen-binding polypeptide segment.

One embodiment provides a composition comprising: a collagen-binding polypeptide segment linked to a PTH/PTHrP receptor agonist; wherein the collagen-binding polypeptide segment is a segment of a collagenase.

One embodiment provides a composition comprising: a collagen-binding polypeptide segment linked to a PTH/PTHrP receptor agonist; wherein, over an 8-week period, the increase in bone mineral density of the composition injected with a vehicle intraperitoneally weekly in a mouse relative to the vehicle alone is at least 50% larger than the increase in bone mineral density of an equimolar amount of a composition consisting of the PTH/PTHrP agonist relative to the vehicle alone.

That is, the bioactive agent (composition) causes an increase in bone mineral density in mice when administered at an appropriate dose in a vehicle, such as an aqueous buffer solution. A control treatment with the vehicle alone may also result in some change in bone mineral density, for example because the mice are juveniles that are still growing or elderly mice whose bone mineral density is otherwise declining. The appropriate way to measure the effect of the bioactive agent is to measure increase in bone mineral density in experimental mice treated with the agent minus increase (or decrease) in bone mineral density in control mice treated with vehicle alone. This increase in bone mineral density with administration of the agent after correction for change in bone mineral density in control mice receiving vehicle alone is at least 50% larger than the increase in bone mineral density in mice treated with an agent containing only the PTH/PTHrP receptor agonist (not coupled to a collagen-binding polypeptide segment), again after correcting for any changes in bone mineral density in control mice treated with vehicle alone. For instance, in FIG. 3 herein, described in Example 4, the vehicle control mice have an increase in bone mineral density during an 8-week treatment period of 5%, mice treated with PTH(1-34) (a PTH/PTHrP agonist) have an increase in BMD of about 7.5%, and mice treated with a PTH-CBD fusion protein containing PTH(1-33) coupled to a collagen-binding domain have an increase in BMD of over 15%. The mice treated with the PTH-CBD fusion protein thus have an increase in BMD after correcting for the change with vehicle alone of over 10% (over 15% minus 5%), and the mice treated with PTH(1-34) have an increase in BMD after correcting for the change with vehicle alone of about 2.5% (about 7.5% minus 5%). Thus, intraperitoneal weekly injection of the fusion protein causes over 300% more (over 4-times as much, over 10% versus about 2.5%) increase in BMD as injection of the PTH(1-34).

Another embodiment provides a fusion protein comprising: a bacterial collagen-binding polypeptide segment; linked to a PTH/PTHrP receptor agonist polypeptide segment.

Another embodiment provides a fusion protein comprising: a collagen-binding polypeptide segment of a collagenase; linked to a PTH/PTHrP receptor agonist polypeptide segment.

Another embodiment provides a fusion protein comprising: a collagen-binding polypeptide segment; linked to a PTH/PTHrP receptor antagonist polypeptide segment.

Another embodiment provides a composition comprising: a collagen-binding polypeptide segment; linked to a non-peptidyl PTH/PTHrP receptor agonist.

Another embodiment provides a composition comprising: a collagen-binding polypeptide segment; linked to a non-peptidyl PTH/PTHrP receptor antagonist.

Another embodiment provides a composition comprising: a collagen-binding polypeptide segment; linked to a PTH/PTHrP receptor antagonist.

Another embodiment provides a method of promoting bone growth in a mammal comprising: administering to the mammal a composition comprising: (a) a collagen-binding polypeptide segment; linked to (b) a PTH/PTHrP receptor agonist.

Another embodiment provides a method of promoting bone growth in a mammal comprising: administering to the mammal a composition comprising (a) a collagen-binding polypeptide segment; linked to (b) a PTH/PTHrP receptor agonist.

Another embodiment provides a method of promoting hair growth in a mammal comprising: administering to the mammal a composition comprising: (i) a collagen-binding polypeptide segment; linked to (ii) a PTH/PTHrP receptor agonist polypeptide segment.

Another embodiment provides a method of promoting hair growth in a mammal comprising: administering to the mammal a composition comprising: (i) a collagen-binding polypeptide segment; linked to (ii) a PTH/PTHrP receptor antagonist.

Another embodiment provides a method of promoting tissue growth around an implant in a mammal comprising: administering to the mammal a composition comprising (a) a collagen-binding polypeptide segment; linked to (b) a PTH/PTHrP receptor agonist; wherein before, during, or after the step of administering the composition, the mammal receives an implant placed in contact with tissue in the mammal; and wherein the step of administering the composition is effective to promote tissue growth around the implant.

Another embodiment provides a method of promoting immune reconstitution in a mammal comprising: administering to the mammal a composition comprising: (a) a collagen-binding polypeptide segment; linked to (b) a PTH/PTHrP receptor agonist; wherein before, during, or after the step of administering the composition, the mammal receives an administration of bone marrow stem cells. The composition enhances immune reconstitution by enhancing grafting, multiplication, and/or differentiation of the bone marrow stem cells.

Another embodiment provides a method of promoting bone marrow stem cell mobilization in a mammal comprising: administering to the mammal a composition comprising: (a) a collagen-binding polypeptide segment; linked to (b) a PTH/PTHrP receptor agonist; wherein administering the composition increases the number of stem cells in circulating blood of the mammal (e.g., 7, 14, or 30 days after administering the fusion protein).

Another embodiment provides a method of treating or preventing renal osteodystrophy in a mammal comprising: administering to the mammal a composition comprising: (a) a collagen-binding polypeptide segment; linked to (b) a PTH/PTHrP receptor antagonist; wherein the mammal is afflicted with renal osteodystrophy or renal disease and the composition is effective to reduce bone loss in the mammal.

Another embodiment provides a method of treating or preventing (i.e., reducing incidence of) bone metastasis of cancer in a mammal comprising: administering to the mammal a composition comprising: (a) a collagen-binding polypeptide segment; linked to (b) a PTH/PTHrP receptor antagonist; wherein the composition is administered at a dosage effective to reduce incidence of bone metastasis of cancer or slow the growth of metastatic cancer in bone.

#### BRIEF DESCRIPTION OF THE DRAWINGS

FIG. 1 is an SDS-PAGE gel showing the results of an experiment showing that two PTH-CBD fusion proteins bind to collagen.

FIG. 2 is a graph showing in vitro cAMP accumulation in cells stimulated with PTH(1-34) or PTH-CBD fusion proteins.

FIG. 3 is a bar graph showing increase in spinal bone mineral density in mice treated with weekly intraperitoneal injection for 8 weeks of buffer (vehicle), PTH(1-34), PTH-PKD-CBD fusion protein, or PTH-CBD fusion protein.



5

FIG. 4 is a bar graph showing absolute spinal bone mineral density of excised spine segments from mice sacrificed after treatment for 8 weeks with weekly intraperitoneal injection of buffer (vehicle), PTH(1-34), PTH-PKD-CBD fusion protein, or PTH-CBD fusion protein.

FIG. 5 is a bar graph showing serum calcium levels of mice after 8 weeks of weekly injections of buffer (vehicle), PTH(1-34), PTH-PKD-CBD fusion protein, or PTH-CBD fusion protein.

FIG. 6 is a bar graph showing serum alkaline phosphatase concentration of mice after 8 weeks of weekly injections of buffer (vehicle), PTH(1-34), PTH-PKD-CBD fusion protein, or PTH-CBD fusion protein.

FIG. 7 is a micrograph of sections of tibia bone from a vehicle-treated control mouse and a mouse receiving 8 weeks of weekly injection of PTH-CBD fusion protein. The sections were stained with hematoxylin and eosin stain. The micrograph shows increased cortical and trabecular bone mass in the bone of the mouse treated with PTH-CBD.

FIG. 8 is line graph of bone mineral density over time for mice treated monthly with PTH-CBD, PTH(1-34), or vehicle control for 6 months. At 6 months, the group receiving PTH(1-34) was treated daily for two weeks (indicated by the arrow on the X axis). Then all groups were untreated for the rest of the study.

FIG. 9 is a line graph of bone mineral density over time for mice treated with PTH(1-34) daily for 14 days (PTH), with the PTH-CBD fusion protein once at the initiation of the study (CBD-PTH-6), with PTH-CBD fusion protein at time 0 and a second time at 3 months (CBD-PTH-3), and with vehicle control.

FIG. 10 is a bar graph showing serum alkaline phosphatase concentration of mice after 8 weeks of weekly injections of buffer (vehicle), PTH(1-34), PTH-PKD-CBD fusion protein, or PTH-CBD fusion protein.

FIG. 11 is a bar graph of bone mineral density in mice receiving a single dose of a range of dosage amounts of PTH-CBD by subcutaneous injection. Bone mineral density was followed for 32 weeks. Each dosage was given to two mice.

FIG. 12 shows photographs of mice described in Example 8 having chemotherapy-induced alopecia and a shaved spot on their backs, treated with the PTH-CBD fusion protein by subcutaneous injection at the hairless spot, or untreated controls. There are 3 mice in each group, and photos are taken at 0 days, 14 days, and 21 days after the injection of PTH-CBD. The photos show greater hair growth in the subjects treated with the PTH-CBD fusion protein.

#### DETAILED DESCRIPTION

This disclosure involves compositions, including bioactive agents and fusion proteins, comprising a collagen-binding polypeptide segment linked to a PTH/PTHrP receptor agonist or antagonist. In a preferred embodiment, the compositions are fusion proteins where the PTH/PTHrP agonist or antagonist is a polypeptide segment, where the collagen-binding polypeptide segment and PTH/PTHrP polypeptide segment are linked together in a fusion protein. But the PTH/PTHrP agonist or antagonist portion can also be a non-peptidyl agonist or antagonist.

The terms "fusion protein" and "fusion polypeptide" may be used to refer to a single polypeptide comprising two functional segments, e.g., a collagen-binding polypeptide segment and a PTH/PTHrP receptor agonist polypeptide segment. The fusion proteins may be any size, and the single polypeptide of the fusion protein may exist in a multimeric

6

form in its functional state, e.g., by cysteine disulfide connection of two monomers of the single polypeptide. A polypeptide segment may be a synthetic polypeptide or a naturally occurring polypeptide. Such polypeptides may be a portion of a polypeptide or may comprise a mutation.

The collagen-binding polypeptide segment is a polypeptide that binds collagen and may be part of a larger fusion protein, bioactive agent, or pharmaceutical agent. Determination of whether a composition, polypeptide segment, fusion protein, or pharmaceutical or bioactive agent binds collagen can be made as described in Example 2 below. Briefly, it is incubated with collagen in binding buffer, and the mixture is then filtered through a filter that would otherwise allow it to pass through but that blocks the collagen and therefore holds back materials that bind to the collagen. The filtrate is then assayed for the presence of the composition, polypeptide segment, fusion protein, or pharmaceutical or bioactive agent. Preferably, at least 90%, more preferably at least 99% of the collagen-binding composition, polypeptide segment, fusion protein, or pharmaceutical or bioactive agent is retained by the filter in this assay, as compared to when the filtration is performed without collagen.

One embodiment disclosed herein involves fusion proteins comprising a collagen-binding polypeptide segment linked to a PTH/PTHrP receptor agonist polypeptide segment.

The PTH/PTHrP receptor agonist polypeptide segment may be a synthetic polypeptide or a naturally occurring polypeptide. Such polypeptides may be a portion of a polypeptide or may comprise a mutation. Agonist activity with the PTH/PTHrP receptor can be assayed as described in Example 3 below by a cAMP stimulation assay. An agonist will stimulate cAMP synthesis. Preferably, an agonist can activate receptor activity at least 10% as much as PTH(1-34).

In a specific embodiment when injected intraperitoneally weekly in mice the agonist fusion protein causes at least 50% more increase in bone mineral density (as compared to vehicle control) than an equimolar amount of a polypeptide consisting of the PTH/PTHrP receptor agonist polypeptide segment when injected intraperitoneally weekly (as compared to vehicle control) over an 8-week period (as in Example 4 below). Likewise, in other specific embodiments, the fusion protein causes a statistically significantly ( $p < 0.05$ ) greater increase in BMD, or at least twice as much increase in BMD, than an equimolar amount of a polypeptide consisting of the PTH/PTHrP receptor agonist polypeptide segment or than PTH(1-34).

In some embodiments of the fusion proteins, the collagen-binding polypeptide segment is a bacterial collagen-binding polypeptide segment. In a more specific embodiment, it is a *Clostridium* collagen-binding polypeptide segment.

In some embodiments of the fusion proteins, the collagen-binding polypeptide segment is a segment of a collagenase, or a bacterial collagenase, or a *Clostridium* collagenase. Preferably the segment is only a portion of the collagenase and the collagen-binding polypeptide segment does not have collagenase activity.

In some embodiments, the collagenase is ColH, SEQ ID NO:6.

In some embodiments, the collagen-binding polypeptide segment is or includes residues 901-1021 of SEQ ID NO:6 (residues 38-158 of SEQ ID NO: 1), or a fragment of residues 38-158 of SEQ ID NO: 1 at least 8 amino acid residues in length.

In some embodiments, the collagen-binding polypeptide segment is at least 90%, at least 95%, at least 96%, at least 98%, or at least 99% identical to residues 38-158 of SEQ ID NO:1.

In some embodiments, the collagen-binding polypeptide segment is or includes residues 807-1021 of SEQ ID NO:6 (residues 37-251 of SEQ ID NO:2).

In specific embodiments, the collagen-binding polypeptide segment is or comprises a fragment of residues 901-1021 of SEQ ID NO:6, e.g., a fragment of at least 8, at least 10, at least 20, at least 30 at least 40, or at least 50 consecutive amino acid residues of residues 901-1021 of SEQ ID NO:6.

Among other proteins the collagen-binding segment can be derived from are ColG (5), a class I collagenase from *Clostridium histolyticum*. ColH is a class II collagenase (6).

The collagen-binding polypeptide segment may also be a polypeptide segment from bone sialoprotein, fibronectin, or von Willebrand factor, as described in references (30-33), or may be polyglutamic acid (34).

In specific embodiments, the PTH/PTHrP receptor agonist polypeptide segment is a PTH or PTHrP polypeptide segment. One human isoform of PTH is SEQ ID NO:7. One human isoform of PTHrP is SEQ ID NO:8.

In specific embodiments, the PTH/PTHrP receptor agonist polypeptide segment is or includes residues 1-33 of SEQ ID NO: 1 (residues 1-33 of PTH (SEQ ID NO:7)).

In specific embodiments, the PTH/PTHrP receptor agonist polypeptide segment is or includes residues 1-34 of PTH (SEQ ID NO:7). In other embodiments, it is a fragment of residues 1-34 of PTH (SEQ ID NO:7).

In specific embodiments, the PTH/PTHrP receptor agonist polypeptide segment is or includes residues 1-84 of PTH (SEQ ID NO:7).

In specific embodiments, the PTH/PTHrP receptor agonist polypeptide segment is or includes residues 1-14 of PTH (SEQ ID NO:7).

In specific embodiments, the PTH/PTHrP receptor agonist is a PTH or PTHrP polypeptide segment.

In one embodiment, the PTH/PTHrP receptor agonist polypeptide segment is N terminal to the collagen-binding polypeptide segment in the fusion protein. That is, the two polypeptide segments each have an N-terminal and a C-terminal, and the N-terminal of the collagen-binding polypeptide segment is linked directly or through a linker polypeptide segment to the C-terminal of the PTH/PTHrP agonist polypeptide segment.

The two polypeptide segments of the fusion proteins can be linked directly or indirectly. For instance, the two segments may be linked directly through, e.g., a peptide bond or chemical cross-linking, or indirectly, through, e.g., a linker segment or linker polypeptide.

This disclosure also provides a fusion protein comprising a collagen-binding polypeptide segment linked to a PTH/PTHrP receptor antagonist polypeptide segment.

The PTH/PTHrP receptor antagonist polypeptide segment may be a synthetic polypeptide or a naturally occurring polypeptide. Such polypeptides may be a portion of a polypeptide or may comprise a mutation. Antagonist activity with the PTH/PTHrP receptor can be assayed as described in Example 3 below by a cAMP stimulation assay. An antagonist will inhibit stimulation of cAMP synthesis by PTH(1-34). Preferably, when mixed with PTH(1-34), the antagonist can inhibit activation of the receptor by PTH(1-34) by at least 50%. In contrast, when not mixed with PTH, the antagonist activates the receptor by less than 5% of the receptor's maximal activation by PTH(1-34).

In the fusion proteins containing a PTH/PTHrP receptor antagonist, the collagen-binding polypeptide segment can be the same segments as found in the fusions containing a PTH/PTHrP receptor agonist.

In some embodiments, the PTH/PTHrP receptor antagonist is a PTH or PTHrP polypeptide segment.

The PTH/PTHrP receptor antagonist can include in one embodiment PTH(7-34), i.e., residues 7-34 of PTH (SEQ ID NO:7). In another embodiment, it is or includes residues 7-33 of PTH (SEQ ID NO:7). In other embodiments, it is a fragment of residues 7-34 of SEQ ID NO:8.

In another embodiment, the PTH/PTHrP receptor antagonist includes PTH(7-14), i.e., residues 7-14 of PTH (SEQ ID NO:7).

In another embodiment, the PTH/PTHrP receptor antagonists include residues 1-14 of PTH with an N-terminal extension. Adding an N-terminal extension to PTH or active N-terminal fragments of PTH converts the PTH peptides to antagonists. The N-terminal extension can be 1, 2, 3, 4, 5, or more amino acids in length. The identity of the amino acids in the N-terminal extension is typically not important. In one embodiment, the PTH/PTHrP receptor antagonist includes residues 1-33 of PTH with a Gly-Ser extension at the N-terminus (SEQ ID NO: 11).

In another embodiment, the PTH/PTHrP receptor antagonist includes PTHrP(7-34), i.e., residues 7-34 of SEQ ID NO:8, or a fragment of residues 7-34 of SEQ ID NO:8.

In another embodiment, the PTH/PTHrP receptor antagonist includes mouse TIP(7-39) (reference 18). Other PTH/PTHrP receptor antagonists that may be used in the fusion proteins are also disclosed in reference (18).

In one embodiment, the PTH/PTHrP receptor antagonist polypeptide segment is N terminal to the collagen-binding polypeptide segment in the antagonist fusion protein. That is, the two polypeptide segments each have an N-terminal and a C-terminal, and the N-terminal of the collagen-binding polypeptide segment is linked directly or through a linker polypeptide segment to the C-terminal of the PTH/PTHrP antagonist polypeptide segment.

As with the agonist, the two polypeptide segments of the antagonist fusion proteins can be linked directly or indirectly.

This disclosure also provides a method of promoting bone growth in a mammal involving administering to the mammal a fusion protein comprising a collagen-binding polypeptide segment linked to a PTH/PTHrP agonist polypeptide segment.

In particular embodiments, administering the fusion protein to the mammal increases trabecular bone mineral volume and/or trabecular bone mineral density or slows loss of trabecular bone mineral volume and/or trabecular bone mineral density.

In particular embodiments, administering the fusion protein to the mammal increases cortical bone mineral volume and/or cortical bone mineral density or slows loss of cortical bone mineral volume and/or cortical bone mineral density.

Bone mineral volume is visible from histologic staining of slides. The term "bone mineral volume" as used herein refers to the volume occupied by mineralized bone. "Bone mineral density" as used herein refers to areal bone density, i.e., the amount of bone mineral per unit 2-dimensional area of bone. It can be measured by x-rays, or DEXA (Example 4 below).

The inventors have found that the PTH-CBD fusion protein increases both the bone mineral volume and density of both trabecular and cortical bone. The effect on cortical bone is surprising, because PTH(1-34) has been shown to

have little effect on cortical bone mineral density or even decrease cortical bone mineral density, even as it increases trabecular bone mineral density (25-27).

The fusion protein can be administered systemically, e.g., by intravenous injection. The inventors have found that when administering the fusion protein subcutaneously it binds locally at the site of injection if the fusion protein is dissolved in neutral pH buffer. But if the fusion protein is dissolved in pH 4.5 or below buffer, the collagen-binding domain does not bind collagen, and the fusion protein has time to disperse systemically before it binds collagen elsewhere in the body at neutral pH. Thus, in one embodiment, systemic administration of the fusion proteins involves administering the fusion protein dissolved in buffer or aqueous solution at a pH lower than about 5.0 or at pH 4.5 or below. In another embodiment, systemic administration of the fusion proteins involves administering the fusion proteins dissolved in aqueous solution at pH lower than about 6.0.

In particular embodiments, the fusion protein is administered by injection, e.g., intravenous or subcutaneous or intraperitoneal injection. Administration by injection may be systemic administration or local administration.

In particular embodiments, the fusion protein is administered in an orthopedic implant. Examples of orthopedic implants in which the fusion protein may be administered include an orthopedic bone void filler, an adjunct to bone fracture stabilization, an intramedullary fixation device, a joint augmentation/replacement device, a bone fixation plate, a screw, a tack, a clip, a staple, a nail, a pin, a rod, an anchor, a screw augmentation device, or a cranial reconstruction device. Another example of an orthopedic implant is a dental implant. Examples of dental implants include an artificial tooth root replacement, implant-supported bridges and dentures. Other examples will be known to those of skill in the art.

To be administered in an implant, as used herein, means that the fusion protein may be associated with the implant, by for instance, adhesion, covalent or non-covalent bonding to the surface of the implant, entrapment in pores of a polymer coating of an implant, or mixing with a component of the implant, such as ceramic particles. If the ceramic particles are porous, the fusion protein can be entrapped in the pores. By "entrapped in the pores" it is meant that diffusion of the fusion protein out of the material is slowed due to the pore structure, not necessarily that the fusion protein cannot diffuse out of the material until the material breaks down.

For instance, the fusion protein can be entrapped in a biodegradable polymer as described in U.S. Pat. No. 7,060,299. It may be formed into particles with a polysaccharide gum, and then the particles entrapped in a matrix of a polymer as described in U.S. Pat. No. 7,060,299. The polymer can be formed as a coating on the surface of an implant.

The fusion protein can also be bonded to a surface such as gold on an implant through sulfhydryls of the protein, as described in U.S. Pat. No. 6,428,579.

The fusion protein can be mixed with a ceramic or with ceramic particles, including for example hydroxyapatite or tricalcium phosphate, both of which are often used as fillers for bone remodeling (U.S. Published Patent Application No. 20030091609).

A porous polymer can be formed by forming the polymer in an organic solvent with particles of a material that is not soluble in the organic solvent, such as salt or sugar crystals. After the polymer is cured, the particles can be removed to

expose the open pores by washing the polymer matrix in an aqueous solution that solubilizes the salt or sugar particles. Incubating the polymer matrix with a solution of the fusion protein can allow the fusion protein to diffuse into the pores of the polymer and become entrapped therein (U.S. Published Patent Application No. 20030091609).

Other methods of adhering proteins to a surface of a material are disclosed in U.S. Pat. No. 6,617,142. Still other methods are available to those of skill in the art.

The fusion protein can be mixed with demineralized bone matrix (DBM). Demineralized bone matrices are prepared by acid extraction of allograft bone, resulting in loss of most of the mineralized component but retention of collagen and noncollagenous proteins, including growth factors. DBM is used as a bone-graft substitute or extender. Since DBM contains extensive amounts of collagen, the fusion proteins will bind to the collagen of DBM if mixed with DBM in binding buffer.

In specific embodiments, the orthopedic implant includes hydroxyapatite, tricalcium phosphate, or demineralized bone matrix. In other embodiments, the orthopedic implant includes a polymer. Many natural and synthetic polymers may be included in an orthopedic implant (e.g., as a coating). Examples of natural porous polymers include gelatin, fibrin, collagen, elastin, hyaluronic acid, chondroitin sulfate, dermatan sulfate, heparin sulfate, heparin, cellulose, chitin, chitosan, mixtures or copolymers thereof, or a wide variety of others typically disclosed as being useful in implantable medical devices. Examples of synthetic porous polymers include silicone, polyurethane, polysulfone, polyethylene, polypropylene, polyamide, polyester, polycarboxylic acids, polyvinylpyrrolidone (PVP), maleic anhydride polymers, polyamides, polyvinyl alcohols (PVA), polyethylene oxides, polyacrylic acid polymers, polytetrafluoroethylene, polyhydroxyethylmethacrylic acid (pHEMA), polyaminopropylmethacrylamide (pAPMA), polyacrylamido-2-methylpropanesulfonic acid (pAMPS), polyacrylamide, polyacrylic acid, mixtures or copolymers thereof, or a wide variety of others typically disclosed as being useful in implantable medical devices. Additional examples of synthetic porous polymers include biodegradable synthetic porous polymers, such as polyglycolic acid, polylactic acid, polydioxanone, poly(-caprolactone), polyanhydrides, poly(3-hydroxybutyrate), poly(ortho esters), poly(amino acids), polyiminocarbonates, and mixtures or copolymers thereof.

Thus, another embodiment provides a method of promoting tissue growth around an implant in a mammal comprising: administering to the mammal a fusion protein comprising: (a) a collagen-binding polypeptide segment; linked to (b) a PTH/PTHrP receptor agonist polypeptide segment. Before, during, or after the step of administering the fusion protein, the mammal receives an implant placed in contact with tissue in the mammal; and the step of administering the fusion protein is effective to promote tissue growth around the implant. The tissue growth promoted around the implant may be bone, cartilage, or other tissue. In one embodiment, it may be skin.

In a particular embodiment, the step of administering the fusion protein comprises placing an implant in contact with tissue in the mammal, wherein the implant comprises the fusion protein.

In a particular embodiment, the implant is a dental implant.

In another embodiment, the implant is a bone graft.

In other embodiments, the implant is an orthopedic bone void filler, an adjunct to bone fracture stabilization, an intramedullary fixation device, a joint augmentation/re-

placement device, a bone fixation plate, a screw, a tack, a clip, a staple, a nail, a pin, a rod, an anchor, a screw augmentation device, or a cranial reconstruction device.

In specific embodiments, the implant comprises intact bone. Here, in one embodiment, the implant is incubated with the fusion protein for a time sufficient to allow the fusion protein to bind to collagen in the intact bone before implanting the implant in the mammal.

In specific embodiments, the implant comprises bone cement, hydroxyapatite, or demineralized bone.

In specific embodiments, the implant comprises osteoblasts.

In specific embodiments, the implant is predominantly plastic, metal, or ceramic (i.e., the majority of its mass is plastic, metal, or ceramic material).

Another embodiment provides a method of promoting hair growth in a mammal comprising: administering to the mammal a fusion protein comprising: a collagen-binding polypeptide segment; linked to a PTH/PTHrP receptor agonist polypeptide segment.

We have found that fusion proteins containing the receptor agonists were more effective than those containing receptor antagonists in promoting hair growth in mice treated with cyclophosphamide to induce chemotherapy-induced alopecia (Example 8 below). A fusion protein containing a PTH/PTHrP receptor antagonist was also tested and also induced some hair growth, but the hair that grew appeared less thick (data not shown). Thus, fusion proteins containing either a PTH/PTHrP receptor agonist or antagonist can be used to promote hair growth, but fusion proteins containing a receptor agonist are preferred for chemotherapy-induced alopecia.

To promote hair growth, the fusion proteins may be administered locally at a desired site of hair growth, e.g., by subcutaneous or intradermal injection. The fusion proteins will bind to collagen in the skin near the site of subcutaneous or intradermal injection and remain bound at the site for long-lasting effect. The fusion proteins can also be administered systemically to promote hair growth. This is preferred to treat chemotherapy-induced alopecia.

In one embodiment of the method of promoting hair growth, the mammal is afflicted with chemotherapy-induced alopecia.

Another embodiment provides a method of promoting immune reconstitution in a mammal comprising: administering to the mammal a fusion protein comprising: (a) a collagen-binding polypeptide segment; linked to (b) a PTH/PTHrP receptor agonist polypeptide segment; wherein before, during, or after administering the fusion protein, the mammal receives an administration of bone marrow stem cells. As used here, the term "bone marrow stem cells" may refer to any stem cells that can implant in bone marrow and differentiate into a variety of types of lymphocytes. Thus, the stem cells may be obtained, for instance, from umbilical cord blood, embryos, the mammal's own blood or bone marrow, or another mammal's blood or bone marrow. Administration of the fusion protein is expected to show an increase in survival following bone marrow ablation and a stem cell transplant in mice. It is also expected to increase the rate of neutrophil number increase—i.e., neutrophil numbers are greater at specific time points (e.g., 7, 14, 21, or 30 days) after transplant in patients or experimental animals receiving the fusion protein in conjunction with the stem cell transplant than in a comparison group not receiving the fusion protein.

In one embodiment, the stem cells will be umbilical cord blood stem cells. Umbilical cord blood is an especially

useful alternative for patients in need of a stem cell transplant who do not have an MHC-matched related or unrelated donor. But the number of stem cells in a single unit of umbilical cord blood is often insufficient for successful engraftment after a bone marrow stem cell transplant (10). Administration of the fusion protein disclosed herein containing a PTH/PTHrP receptor agonist is expected to improve grafting of the stem cells and increase the odds of a successful graft with one or two units of umbilical cord blood.

In another embodiment, the stem cells will be autologous blood stem cells. Often too few stem cells are mobilized from a patient to support autologous stem cell transplant. Administering the fusion protein is expected to enhance the chance of successful engraftment when the number of stem cells transplanted is less than optimal. It also is expected to enhance the chance of successful engraftment when the number of stem cells transplanted is considered adequate.

Preferably the fusion protein would be administered before or together with administration of the stem cells to promote engraftment of stem cells in the bone marrow. But it may also be administered after administration of the stem cells.

Another embodiment provides a method of promoting bone marrow stem cell mobilization in a mammal comprising: administering to the mammal a fusion protein comprising: (a) a collagen-binding polypeptide segment; linked to (b) a PTH/PTHrP receptor agonist polypeptide segment. Administering the fusion protein is expected to increase the number of stem cells in circulating blood of the mammal (e.g., 7, 14, or 30 days after administering the fusion protein). In a specific embodiment, this method further comprises collecting stem cells from blood of the mammal after the step of administering the fusion protein to the mammal.

Autologous stem cell transplantation cures lymphomas in many patients and improves survival in multiple myeloma. But approximately 20% of patients do not mobilize sufficient stem cells to safely support autologous stem cell transplantation (11). The fusion protein described herein containing a PTH/PTHrP receptor agonist is expected to promote stem cell mobilization.

Another embodiment is expected to provide a method of treating myocardial infarction in a mammal comprising: administering to a mammal after the mammal suffers a myocardial infarction a fusion protein comprising: (a) a collagen-binding polypeptide segment; linked to (b) a PTH/PTHrP receptor agonist polypeptide segment.

Another embodiment provides a method of treating or preventing renal osteodystrophy in a mammal comprising: administering to the mammal a fusion protein comprising: (a) a collagen-binding polypeptide segment; linked to (b) a PTH/PTHrP receptor antagonist polypeptide segment; wherein the mammal is afflicted with renal osteodystrophy or renal disease. In this embodiment, the fusion protein is expected to be effective to reduce bone loss in the mammal.

One embodiment is expected to provide a method of treating or reducing incidence of bone metastasis of cancer in a mammal comprising: administering to the mammal a fusion protein comprising: (a) a collagen-binding polypeptide segment; linked to (b) a PTH/PTHrP receptor antagonist polypeptide segment.

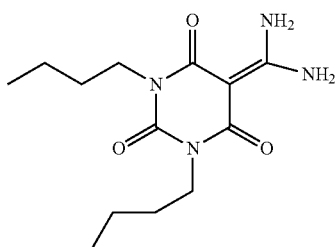
PTHrP is positively associated with bone metastasis (15, 16, 17). Breast carcinoma metastatic to bone expresses PTHrP in more than 90% of cases, compared with 17% in metastases to nonbone sites (15). In a mouse model, human tumor cells transfected with a cDNA to overexpress human

13

PTHrP had increased metastasis to bone (15). Conversely, administration of an anti-PTHrP antibody decreased bone metastases (15, 17).

Binding of PTHrP to its receptor alters the microenvironment of bone favorably to promote metastasis. A fusion protein containing a CBD segment and a PTH/PTHrP receptor antagonist will likely occupy the receptor in bone and thus decrease the occurrence of metastasis. It is expected to slow the growth of metastatic tumors in bone.

In all the embodiments described herein, fusion proteins comprising (a) a collagen-binding polypeptide segment linked to (b) a PTH/PTHrP receptor agonist polypeptide segment can be replaced by pharmaceutical agents comprising (a) a collagen-binding polypeptide segment linked to (b) a PTH/PTHrP receptor agonist or a non-peptidyl PTH/PTHrP receptor agonist. An example of a non-peptidyl PTH/PTHrP receptor agonist is compound AH3960 (19).



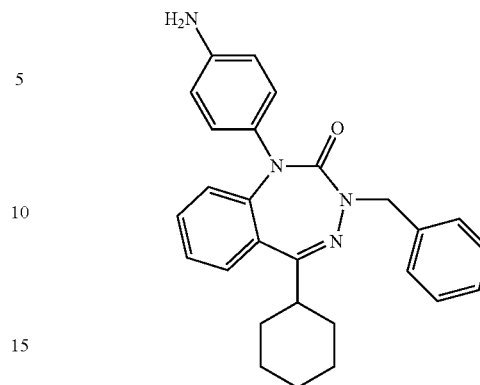
AH3960

AH3960 contains two amino groups. These can be used to cross-link the compound to amino groups on the collagen-binding polypeptide segment through a cross-linker such as DSG (disuccinimidyl glutarate) or through the combination of SANH (succinimidyl-4-hydrazinonicotinate acetone hydrazone) and SFB (succinimidyl-4-formyl benzoate). AH3960 can be cross-linked through its amino group to a carboxyl group of the collagen-binding polypeptide segment by EDC (1-ethyl-3-[3-dimethylaminopropyl]carbodiimide hydrochloride). These products are available from Pierce (pierce.net.com, Thermo Fisher Scientific Inc., Rockford, Ill.). Protocols and reaction conditions are also available in the product literature from Pierce (pierce.net.com).

Likewise, in the embodiments described herein involving receptor antagonist fusion proteins, fusion proteins comprising (a) a collagen-binding polypeptide segment linked to (b) a PTH/PTHrP receptor antagonist polypeptide segment can be replaced by pharmaceutical agents comprising (a) a collagen-binding polypeptide segment linked to (b) a PTH/PTHrP receptor antagonist or a non-peptidyl PTH/PTHrP receptor antagonist.

Thus, another embodiment provides a pharmaceutical agent comprising: (a) a collagen-binding polypeptide segment linked to (b) a PTH/PTHrP receptor antagonist, where the antagonist may be non-peptidyl. Non-peptidyl antagonists of the PTH/PTHrP receptor include compounds disclosed in (20), including compound 2 below:

14



Compound 2 can be coupled through its amino group to amino or carboxyl groups of the collagen-binding polypeptide segment as described above for compound AH3960. In compound 3 of reference (20), the amino group of compound 2 is replaced with a 5 carboxyl group. This can be coupled to amino groups of the collagen-binding polypeptide segment with EDC.

In another embodiment of the pharmaceutical agents comprising (a) a collagen-binding polypeptide segment; linked to (b) a PTH/PTHrP receptor agonist polypeptide segment or antagonist polypeptide segment, segment (a) and segment (b) are separate polypeptides, and the two polypeptides are linked by chemical cross-linking. The two polypeptides can be cross-linked through amino groups by reagents including DSG (disuccinimidyl glutarate) or glutaraldehyde. They can also be cross-linked through amino groups by derivatizing one polypeptide with SANH (succinimidyl-4-hydrazinonicotinate acetone hydrazone) and the other with SFB (succinimidyl-4-formyl benzoate), and then mixing the two derivatized polypeptides to cross-link. The two polypeptides can be cross-linked between an amino group of one polypeptide and a carboxyl of the other by reaction with EDC (1-ethyl-3-[3-dimethylaminopropyl]carbodiimide hydrochloride). The polypeptides can also be cross-linked (e.g., covalently coupled) by any other suitable method known to a person of ordinary skill in the art. These cross-linking reagents are available from Pierce (pierce.net.com, Thermo Fisher Scientific Inc., Rockford, Ill.). Protocols and reaction conditions are also available in the product literature from Pierce (pierce.net.com). These and other applicable cross-linking methods are described in U.S. published patent applications 20060258569 and 20070224119.

Based on the data herein, the individual doses of pharmaceutical agents comprising a collagen-binding polypeptide segment linked to a PTH/PTHrP receptor agonist polypeptide segment can be approximately the same on a molar basis as doses used for PTH(1-34). But the pharmaceutical agents comprising a collagen-binding polypeptide segment linked to a PTH/PTHrP receptor agonist polypeptide segment can be administered less frequently, because linking the agonist to the collagen-binding polypeptide segment gives it much more prolonged activity in vivo.

The following examples are presented to illustrate various aspects of the disclosure without limiting the scope thereof.

## 15

## EXAMPLES

## Example 1

Expression of PTH-Collagen-Binding Domain  
Fusion Proteins

A plasmid expressing a PTH-CBD fusion protein was constructed by inserting the PTH-CBD coding sequence into pGEX-5X-1 (GE Lifesciences). The sequence of the resulting plasmid is SEQ ID NO:3. Nucleotides 258 to 1409 of SEQ ID NO:3 encode a fusion protein containing glutathione-S-transferase (GST) fused at its C terminus to a PTH-CBD fusion protein. SEQ ID NO:4 is the full encoded GST-PTH-CBD fusion protein. Residues 222-225 are IEGR (SEQ ID NO:5), a factor Xa protease recognition site. Residues 226-383 of SEQ ID NO:4 correspond to SEQ ID NO: 1 and are the PTH-CBD fusion protein. Factor Xa cleaves after the Arg that is amino acid residue 225 of SEQ ID NO:4 to release SEQ ID NO:1, the PTH-CBD fusion protein. Residues 1-33 of SEQ ID NO:1 are the N-terminal 33 residues of PTH. Residues 38-158 are a collagen-binding domain (CBD) of the ColH collagenase of *Clostridium histolyticum*. The CBD of the fusion protein corresponds to residues 901-1021 of ColH (SEQ ID NO:6). Residues 34-37 of SEQ ID NO:1 are a linker segment.

A second PTH-CBD fusion protein, PTH-PKD-CBD (SEQ ID NO:2), was expressed from the a plasmid otherwise identical to SEQ ID NO:3 with a longer insert segment from the colH gene to express. Like SEQ ID NO: 1, it was expressed as part of a GST fusion protein and cleaved from GST by Factor Xa. Residues 1-33 of SEQ ID NO:2 are the N-terminal 33 residues of PTH. Residues 34-36 are a linker segment. And residues 37-251 are residues 807-1021 of ColH. This fusion protein includes a polycystic kidney disease (PKD) domain of ColH (residues 807-900 of ColH), in addition to the collagen binding domain of residues 901-1021 of ColH found in both SEQ ID NO:1 and SEQ ID NO:2. It was thought that including the PKD domain might minimize domain-domain interferences or other steric hindrances between the PTH domain and CBD domain.

## Purification of CBD Fusion Proteins—

*E. coli* BL21 was transformed with the recombinant plasmids. Each clone was grown in one liter of 2YT-G medium to an optical density at 600 nm of 0.7. Isopropyl-1-thio-beta-D-galactopyranoside was added to a final concentration of 0.1 mM, and cells were grown for a further 2 hours. In order to prevent proteolysis during the purification procedures, phenylmethylsulfonylfluoride was added to the culture to a final concentration of 1 mM. Cells were harvested by centrifugation, and disrupted in a French pressure cell. Cell debris was removed by centrifugation, and the cleared lysate was used for the purification of the fusion protein by a batch method using glutathione-SEPHAROSE 4B beads (volume, 4-ml; GE Lifesciences) as described by the manufacturer. The GST-tag of each fusion protein was cleaved by incubation with Factor Xa (New England Biolabs, 0.2 µg/mg of fusion protein) for 20 h at room temperature. The cleaved protein fractions were dialyzed three times against 1 liter of 50 mM Tris-HCl (pH7.5), 100 mM NaCl at 4° C. to remove glutathione. The N-terminal GST fragment was removed by applying the fraction to a glutathione-SEPHAROSE 4B column (bed volume, 2 ml). Ten amino acid residues from the N terminus were confirmed for each fragment on an automatic protein sequencer (Model 492, Perkin-Elmer). The molecular mass of the purified

## 16

C-terminal fragment was confirmed by matrix-assisted laser desorption time-of-flight mass spectrometry (MALDI-TOF MS).

## Example 2

Demonstration of Collagen Binding by the  
PTH-CBD Fusion Proteins

Five mg insoluble collagen type I, (C-9879; Sigma) was added to an ULTRA FREE micro centrifugal device, 0.22 micrometer low-binding DURAPORE membrane (Millipore, Bedford, Mass.) and placed in a micro centrifuge tube (Catalogue No:UFC30GV00-Millipore). All steps were carried at room temperature unless otherwise specified. Collagen binding buffer (200 microliters) (50 mM Tris-HCl, pH 7.5, 5 mM CaCl<sub>2</sub>) was added to swell the collagen fibers. After incubation for 30 minutes, the tube was centrifuged at 15,000 g for 15 minutes. Centrifugation was repeated after changing the direction of the tube in the rotor. The collagen precipitate was resuspended in 60 µl of collagen binding buffer containing 100 pmole of fusion protein and incubated for 30 minutes. The mixture was then centrifuged through the device at 15,000×g for 15 minutes. Proteins bound to the collagen would be retained by the filter along with the collagen. Proteins that do not bind to collagen would pass through in the filtrate. The filtrate was analyzed by SDS-PAGE.

FIG. 1 shows a photograph of the SDS-PAGE gel. Lane 1 on the left is molecular weight markers. Lane 2 is the filtrate of a mixture containing PTH-PKD-CBD fusion protein filtered without collagen. Lane 3 shows the filtrate of a mixture of PTH-PKD-CBD fusion protein with collagen. Lanes 4 and 5 show the filtrate of the PTH-CBD fusion protein incubated without and with collagen, respectively. The result shows that both fusion proteins failed to pass through the filter when incubated with collagen, but did pass through when incubated without collagen. This shows both fusion proteins bound to collagen.

## Example 3

In Vitro Biological Activity of PTH-CBD Fusion  
Proteins

HKrK-B7 cells, which are LLCpk cells stably transfected with the human PTH1R, were kindly provided by Tom Gardella, Endocrine Unit, Massachusetts General Hospital. The cells are described in reference (7). HKrK-B7 cells were grown in 24 well plates to 90 percent confluence, which was typically achieved 2-3 days after initial seeding. The culture media was DMEM (with L-glutamine)+10% fetal bovine serum (FBS).

When the cells reached 90% confluence, the cells were rinsed once with 0.5 ml binding buffer (50 mM Tris-HCl, pH 7.8, 100 mM NaCl, 2 mM CaCl<sub>2</sub>, 5 mM KCl, 0.25% horse serum, 0.0025% fetal bovine serum). The plate was placed on ice, and 200 microliters IBMX buffer (DMEM without antibiotic and FBS, 35 mM HEPES, pH 7.4, 3-isobutyl-1-methylxanthine (IBMX), 1 mg/ml bovine serum albumin) was added per well. IBMX is a phosphodiesterase inhibitor. Peptide or PTH was added at the indicated concentrations in 100 microliters binding buffer. The cells were then incubated with the peptide, PTH, or no addition (control) for 1 hour at room temperature. The media was then removed and the plates were placed on dry ice to freeze the cells for 3

17

minutes. 500 microliters 50 mM HCl was next added to each well. The plates were kept frozen until the immunoassay.

cAMP concentration was measured by immunoassay (Biomedical Technologies, Inc., Stoughton, Mass., USA; cAMP EIA kit, #BT-730).

The results of the cAMP concentration from the lysed cells in the wells is shown in FIG. 2 for cells incubated with from  $1 \times 10^{-12}$  M to  $1 \times 10^{-7}$  M fusion peptide or PTH(1-34). PTH(1-34), PTH-CBD (SEQ ID NO: 1), and PTH-PKD-CBD (SEQ ID NO:2) all stimulated cAMP synthesis to a similar extent.

#### Example 4

##### In Vivo Activity of PTH-CBD Fusion Proteins

Healthy female C57BL/6J mice, 5-8 weeks age and 13-18 grams, were purchased from the Jackson laboratory (Bar Harbor, Me., USA) and they were housed in cages at the Animal facility in Ochsner Clinic Foundation under standard conditions. Animals were maintained for a 2-week acclimation period prior to experiments.

Baseline whole body DEXA (dual emission x-ray absorptiometry) measurements were obtained in duplicate for each animal using a Hologic QDR-1000plus instrument adapted for application in the mouse as follows. An ultrahigh resolution mode (line spacing 0.03950 cm and resolution 0.03749 cm) was used. The animals were anesthetized with pentobarbital and positioned in the prone position for DEXA scanning. Bone mineral density (BMD) was determined within an  $8 \times 16$  pixel box covering the region of the lumbar spine. BMD for each single pixel vertical stripe was measured, and the peak values were determined. Validity for this technique was ascertained by comparing the duplicate measurements in each mouse.

Animals were injected intraperitoneally weekly for eight weeks with either vehicle alone (collagen binding buffer, pH 7.5, 50 mM Tris HCl, 5 mM  $\text{CaCl}_2$ ) or vehicle containing PTH analogs as follows:

Group A (8 animals): vehicle

Group B (6 animals): 80  $\mu\text{g}/\text{kg}/\text{dose}$  of human PTH(1-34)

Group C (6 animals): 546  $\mu\text{g}/\text{kg}/\text{dose}$  of PTH-PKD-CBD (SEQ ID NO:2)

Group D (6 animals): 344  $\mu\text{g}/\text{kg}/\text{dose}$  of PTH-CBD (SEQ ID NO: 1)

The doses of the three PTH compounds were adjusted based on their molecular weights, such that each was given at the same molar equivalent (0.02 micromoles/kg/dose).

One week after the 8<sup>th</sup> injection, animals were sacrificed with a lethal dose of pentobarbital. Duplicate BMD measurements were obtained for each mouse by the technique described above. Percent increase in BMD for each mouse was calculated, and the results (average $\pm$ standard error) are shown in FIG. 3. Statistical significance was determined using a one-tailed paired T test. Statistically significant differences from vehicle control are shown by \* ( $p < 0.05$ ) and \*\* ( $p < 0.01$ ) in FIGS. 3 and 4.

At the conclusion of the study, lumbar spine segments of the mice were also excised from the soft tissue and BMD measurements of the excised spine segments were taken. The BMD results of the excised spine segments are the average for the entire bone segment, not peak BMD measurements like those that were obtained from the whole animal scans.

The statistical comparisons used were ANOVA across groups ( $p < 0.05$ ), and Bonferroni comparisons of each group vs. control.

18

The PTH-CBD fusion protein (SEQ ID NO: 1) produced an average 17% increase in BMD over the 8-week treatment period. Both PTH(1-34) and the PTH-PKD-CBD fusion protein (SEQ ID NO:2) produced approximately a 7.5% increase in bone mineral density. The mice in the vehicle control group had a 5% increase in BMD over the 8-week treatment period. (FIG. 3.) Both PTH-CBD ( $p < 0.01$ ) and PTH-PKD-CBD ( $p < 0.05$ ) fusion proteins produced BMD increases that were statistically significantly greater than vehicle controls, while PTH(1-34) did not. But the PTH-CBD fusion gave approximately twice the BMD increase of both PTH(1-34) and the PTH-PKD-CBD fusion protein. (FIG. 3)

The BMD of excised lumbar spine segments of the four groups of mice at the conclusion of the 8-week treatment period are shown in FIG. 4. Again, the PTH-CBD group was statistically significantly different from the vehicle control ( $p < 0.05$ ). Differences between other groups with vehicle control and with each other did not reach statistical significance.

Serum calcium levels were also measured in the mice before, during, and after the study. PTH with daily injection is known to carry a risk of hypercalcemia. There was no difference in serum calcium levels between any of the groups, indicating that the PTH-CBD fusion proteins did not cause hypercalcemia (FIG. 5).

Serum alkaline phosphatase levels were also measured. Serum alkaline phosphatase was increased in the PTH(1-34), PTH-PKD-CBD, and PTH-CBD groups (FIG. 6). Elevated alkaline phosphatase is correlated with hyperparathyroidism and periods of bone growth. Thus, this is evidence of increased bone turnover with all three agents.

Staining of tibial sections with hematoxylin and eosin showed increased trabecular and cortical bone in mice treated with 8 weeks of PTH-CBD versus vehicle control (FIG. 7).

No evidence of bone tumors in mice in any of the groups was found by DEXA or post-mortem examination.

We conclude that the PTH-CBD fusion protein is more active than PTH(1-34) in promoting bone mineral density increase in vivo.

#### Example 5

##### Monthly Administration of PTH-CBD In Vivo

With the encouraging results showing efficacy of PTH-CBD to increase bone mineral density after weekly administration, we next tested the efficacy of this fusion protein with monthly administration. Mice received intraperitoneal injection of PTH-CBD (344  $\mu\text{g}/\text{kg}/\text{dose}$ ), PTH (80  $\mu\text{g}/\text{kg}/\text{dose}$ ), or vehicle alone monthly in buffer as described in Example 4. There were 10 mice in each group. Bone mineral density (BMD) was measured by DEXA as described in Example 4 every 2 months. DEXA measurements were correlated to absolute bone mineral density by correlation between DEXA measurements and measurements from excised tissue in the weekly study of Example 4.

Serial measurements of BMD every 2 months showed that monthly administration of PTH-CBD resulted in significant increases in BMD after 4 months of therapy, which were sustained for 6 months of therapy (FIG. 8) ( $p < 0.01$ , shown by \*\* in FIG. 8). Not surprisingly, monthly administration of PTH(1-34) had no effect on bone mineral density. After 6 months (as indicated by the arrow in FIG. 8), we discontinued administration of PTH-CBD, and subjected the animals in the PTH(1-34) group to 2 weeks of daily therapy.

## 19

Measurement of BMD 2 months later showed that the gains in bone mineral density after PTH-CBD administration were sustained (despite the decline in BMD in the vehicle control group, expected for age), and that the daily administration of PTH(1-34) resulted in increases in BMD which approached but did not reach those of the PTH-CBD group.

The mice were then followed for another 6 months, and the data showed that the BMD of the PTH(1-34) and PTH-CBD groups declined in parallel and remained higher than the untreated vehicle control mice.

Serum concentration of alkaline phosphatase was also measured in these groups of mice at the 48-week time point. The results are shown in FIG. 10. Even at 48 weeks, 22 weeks after the last administration of the PTH-CBD fusion protein, alkaline phosphatase concentration was elevated in the group receiving the PTH-CBD fusion protein compared to the vehicle control mice and mice that received PTH(1-34).

Conclusion:

Together with the data in Example 4, these data indicate that monthly administration of PTH-CBD showed at least equal efficacy to daily injection of PTH in promoting an increase in bone mineral density. Importantly, the dose of PTH-CBD given in each injection is the molar equivalent of the daily dose of PTH(1-34); thus, the total administered dose is actually  $\frac{1}{30}$  of the dose with PTH(1-34). The data suggests that even longer dosing intervals than monthly may be effective, and that the effects on BMD are sustained for a longer time after cessation of therapy with PTH-CBD than with PTH(1-34).

Example 6

3- and 6-Monthly Administration of PTH-CBD In Vivo

With the encouraging results showing efficacy of PTH-CBD to increase bone mineral density after monthly administration, we next tested the efficacy of this fusion protein with administration every 3 or every 6 months. Mice received intraperitoneal injection of PTH-CBD (344  $\mu\text{g}/\text{kg}/\text{dose} \times 1$ ) (CBD-PTH-6 of FIG. 9), PTH-CBD (344  $\mu\text{g}/\text{kg}/\text{dose}$  at 0 and 3 months) (CBD-PTH-6 of FIG. 9), PTH(1-34) (80  $\mu\text{g}/\text{kg}/\text{dose}$  daily for 2 weeks), or vehicle alone ( $\times 1$ ) in buffer as described in Example 4. There were eleven mice in each group. Bone mineral density (BMD) was measured by DEXA at 3 month and monthly thereafter. The study is ongoing, and data are available up to the 5 month time point

Serial measurements of BMD showed that a single dose of PTH-CBD resulted in significant increases in BMD after 4 months of therapy (FIG. 9). Administration of the second dose of PTH-CBD at the 3 month time point did not cause further increases in BMD at the 4 and 5 month time points. Daily administration of PTH(1-34) for 2 weeks caused the expected increase in BMD at 3 months, but by 5 months the BMD had declined back to control levels. The mice in this study will be followed for an additional 7 months.

Conclusion:

Together with the data in Examples 4 and 5, these data suggest that a single dose of PTH-CBD is sufficient to promote sustained increases in bone mineral density.

Importantly, the dose of PTH-CBD given in each injection is the molar equivalent of the daily dose of PTH(1-34); thus, the total administered dose is actually  $\frac{1}{14}$  of the dose of PTH(1-34) over the 5 month interval for which we have data at this time. We will continue to collect data on this study for another 7 months. The data also indicate that the effects on

## 20

BMD are sustained for a longer time after cessation of therapy with PTH-CBD than with PTH(1-34).

Example 7

Preliminary Dose and Time Response Study

To determine roughly the optimal dose of PTH-CBD, a single dose of the fusion protein was given by subcutaneous administration to mice at a range of doses from 2 to 8,000 micrograms/kg and the BMD of the mice was tested by DEXA every 4 weeks for 20 weeks. At the highest dose, the BMD decreased between 4 weeks and 12 weeks and then increased. It thus appeared to have a transient catabolic effect and then a possible anabolic effect. Intermediate doses of 40-400 micrograms/kg, which spans the dose of 344 micrograms/kg used in Example 4 and 5, appeared to have the greatest anabolic effect over the first 8 weeks. The lowest dose tested, 2 micrograms/kg appeared to have less anabolic effect over the first 16 weeks. (FIG. 11)

Example 8

Use of PHT-CBD to Promote Hair Growth

There are reports that PTH agonists and antagonists can modulate hair growth in animal models of genetic hair loss and after administration of chemotherapy (8,9). We tested whether PTH-CBD could, after subcutaneous administration, alter the pattern of hair growth after chemotherapy-induced hair loss with cyclophosphamide.

Materials and Methods:

Healthy female C57BL/6J mice (as in Example 4) were treated with 150 mg/kg cyclophosphamide every month for 3 months. The chemotherapeutic agent caused hair thinning and color change from black to white. We additionally shaved a spot on the back. At the spot of hair removal, we injected PTH-CBD subcutaneously at a dose of 320 mg/kg. We also tested injection of a CBD fusion protein containing a PTH/PTHrP receptor antagonist (SEQ ID NO:9). This fusion protein was made by inserting a thrombin cleavage sequence (Leu-Val-Pro-Arg-Gly-Ser, SEQ ID NO: 12) between the GST and PTH(1-33) segments of the fusion protein of SEQ ID NO:1. The resultant GST-PTH-CBD fusion protein is cleaved by thrombin between the Arg and Gly residues of the thrombin cleavage sequence to release the Gly-Ser-PTH-CBD fusion protein of SEQ ID NO:9.

Results:

The PTH-CBD treated animals showed more rapid regrowth of hair at the spot of removal, and the chemotherapy-induced thinning and color change of the hair were both reversed, even at sites distant from the PTH-CBD injection site (FIG. 12). A CBD fusion protein containing a PTH/PTHrP receptor antagonist was also tested in pilot studies. But the antagonist fusion protein produced only peach fuzz hair at the site of injection and did not work as well as the PTH-CBD agonist fusion protein (results not shown). The antagonist fusion protein produced more hair than vehicle control treatment (results not shown).

Conclusion:

PTH-CBD can reverse chemotherapy-induced alopecia, and the effects are not restricted to the site of injection.

Example 9

Use of PHT-CBD to Promote Immune Reconstitution

Female C57BI/6 mice are irradiated with 10 Gy of radiation ( $^{137}\text{Cs}$  source). 24 hours later, mice are injected with



## 21

$2 \times 10^5$  bone marrow mononuclear cells (BMMNC) from a donor B6.SJL mouse. Immediately before receiving the BMMNC, the recipient mice are also injected with saline (vehicle control), 344: g/kg PTH-CBD (SEQ ID NO: 1), or 80: g/kg PTH(1-34).

A portion or all of the mice receiving BMMNC alone are expected to die. A greater percentage of mice receiving PTH(1-34) are expected to survive. A still greater percentage of mice receiving PTH-CBD are expected to survive.

It is also expected that neutrophil count will increase faster in mice receiving the PTH-CBD fusion than in mice receiving an equimolar amount of PTH or receiving vehicle control.

## Example 10

## Use of PTH-CBD to Promote Bone Marrow Stem Cell Mobilization

Six- to 8-week old male C57BL/6 mice are injected subcutaneously with a single dose of 80 mcg/kg PTH(1-34) or 344 mcg/kg PTH-CBD (SEQ ID NO: 1) or saline (vehicle control). Fourteen days later, peripheral blood is collected from the mice, and c-KIT/Sca-1 cells are determined by fluorescence activated cell sorting (FACS) (21). It is determined that PTH-CBD causes a greater increase in c-KIT/Sca-1 double positive cells than a single dose of PTH(1-34).

To test the ability of stem cells mobilized with PTH-CBD to repopulate, blood is collected 14 days after treatment with PTH, PTH-CBD, or vehicle control as described above. Red cells are lysed as described in (22). Total collected cells from 900  $\mu$ l of blood is transfused into a mouse that was subjected to a lethal dose of radiation (900 cGy) 24 hours before. A larger percentage of recipient mice are expected to survive when given blood cells from a donor mouse treated with PTH-CBD than from a mouse treated with PTH(1-34) or vehicle control. Further, it is expected that administering the fusion protein will increase the number of stem cells in circulating blood of the mammal (e.g., 7, 14, or 30 days after administering the fusion protein)

## Example 11

## Use of a CBD-PTH/PTHrP Receptor Antagonist Fusion Protein for the Prevention and Treatment of Bone Metastasis of Breast Cancer

When administered as a daily injection, PTH(1-34) stimulates bone growth in various species and in osteoporotic women. However, continuous administration of PTH as an infusion (i.e. parathyroid adenoma) results in bone loss.

Breast cancer metastasizes to bone by producing a factor, PTH-related peptide (PTHrP), which activates the PTH/PTHrP receptor, increasing bone turnover in the local region. The removal of bone tissues which results from this cascade creates a void in the bone where cancer cells can grow and causes release of growth factors from the remodeled collagen matrix which promote tumor growth. In this study, we show that a PTH-CBD antagonist peptide has the ability to treat or prevent (reduce incidence of) bone metastasis of breast cancer. The model used is the immunodeficient nude mouse.

Animals receive a single injection of MCF-7 human breast cancer cells tagged with a phosphorescent probe. Animals are imaged weekly using a whole body imager to assess for bone metastatic lesions. Once 2 or more lesion are present in each animal, the animals receive a single injection

## 22

of PTH(7-33)-CBD or vehicle control. Weekly imaging is continued for an additional 2 months to monitor growth of existing metastases and appearance of new metastases.

Experimental Methods:

22 Nude mice, aged 3-5 weeks and 13-18 grams are obtained. Initial weight of the animals is recorded along with their general health condition. Animals are maintained for a 2 week acclimation period prior to experiments. (final age 5-8 weeks).

Baseline images are obtained from each animal using the Bioluminescent/Fluorescent Imager (Xenogen Biosciences, Cranbury, N.J.) whole body imager after isoflourane anesthesia. Animals then receive a single injection of MCF-7 cells stably transfected with a plasmid expressing firefly luciferase (23, 24). Animals are re-imaged following the injection and on a weekly basis thereafter to monitor for bone metastasis.

When 2 or more metastatic lesions are presenting the bones of each mouse, the animals will be divided randomly into 2 groups:

Group 1: 11 animals—is administered with vehicle intraperitoneally once.

Group 2: 11 animals—is administered with 344 mcg/kg of PTH(7-33)-CBD (SEQ ID NO:10) intraperitoneally once.

Animals are sedated with isoflourane and whole body images are obtained on a weekly basis for a 2 month period. Data Analysis:

During the experimental period, animals are weighed and examined weekly to detect any signs of illness. Whole body images are analyzed to determine the number of metastatic lesions and intensity of the luminescent light emission from each lesion.

At the end of the experimental period the animals will be sacrificed by injecting a lethal dose of pentobarbital (100 mg/kg). Regions of the bone which contain(ed) metastatic lesions at any point during the study are prepared for histological examination.

Results:

Mice injected with PTH(7-33)-CBD are expected to develop fewer metastatic bone lesions and have slower growth of metastatic bone lesions than mice receiving vehicle control.

## Example 12

## Use of a CBD-PTH/PTHrP Receptor Antagonist Fusion Protein for the Prevention and Treatment of Renal Osteodystrophy

Renal osteodystrophy is a bone disease that occurs when kidneys fail to maintain the proper levels of calcium and phosphorus in the blood. It's a common problem in people with kidney disease and affects 90 percent of dialysis patients. Renal osteodystrophy is a key cause of fractures in patients with chronic kidney disease. In this study, we show that PTH-CBD antagonist peptide has the ability to treat or prevent osteodystrophy. The model used is normal female mice fed with a high phosphorus diet to induce renal osteodystrophy.

Animals then receive a single injection of PTH(7-33)-CBD or vehicle control. Animals are maintained for 6 months after the initial dosing period to assess the duration of the therapeutic effects. Bone mineral density and alkaline phosphatase levels are measured on a monthly basis.

Experimental Plan:

Healthy female normal C57BL/6J mouse, aged 3-5 weeks and 13-18 grams are obtained. Initial weight of the animals

is recorded along with their general health condition. Animals are maintained for a 2 week acclimation period prior to experiments (final age 5-8 weeks).

Animals are fed with high phosphorus diet to induce renal osteodystrophy (ROD). The animals are checked periodically for their health status. The blood samples are collected to assess the calcium, phosphorus, PTH and Vitamin D levels. Renal osteodystrophy results from an abnormally elevated serum phosphate (hyperphosphatemia) and low serum calcium (hypocalcemia), both of which are due to decreased excretion of phosphate by the damaged kidney, low vitamin D levels or tertiary hyperparathyroidism (dysfunction of the parathyroid gland due to constant stimulation).

Baseline bone mineral density measurements are also be made.

The animals are divided into the following groups:

Group 1: 11 animals—are administered vehicle intraperitoneally once.

Group 2: 11 animals—are administered with 344 mcg/kg of PTH(7-33)-CBD (SEQ ID NO:10) intraperitoneally once.

Animals are sedated with pentobarbital and bone mineral density (BMD) is measured at the start of the study and monthly for the duration of the study (6 months). Blood samples are obtained from tail clipping at the start of the study and every month (under sedation as above).

Data Analysis:

During the experimental period, animals are weighed and examined weekly to detect any signs of illness. Bone mineral density measurements are analyzed by ANOVA at each time point. Alkaline phosphatase and calcium values are measured from each blood sample and analyzed by ANOVA at each time point.

At the end of the experimental period the animals are sacrificed by injecting a lethal dose of pentobarbital (100 mg/kg). Blood samples are collected to perform biochemical assays (intact PTH, calcium, phosphorus, alkaline phosphatase, osteocalcin). Quantitative bone assays include histomorphometry, BMC and BMD of the total body and excised spine, and assessment of biomechanical properties. Data is analyzed by ANOVA.

Results:

The animals injected with PTH(7-33)-CBD are expected to respond with increases or slower decreases in all measures of bone mineral density as compared to mice receiving vehicle control. Mice injected with PTH(7-33)-CBD are expected also to show trabecular bone growth or slower loss of trabecular bone than mice receiving vehicle control.

Sequence Listing Summary

SEQ ID NO:1 PTH-CBD fusion protein

SEQ ID NO:2 PTH-PKD-CBD fusion protein

SEQ ID NO:3 vector expressing PTH-CBD fusion protein precursor.

SEQ ID NO:4 GST-PTH-CBD fusion protein expressed by vector.

SEQ ID NO:5 Factor Xa recognition sequence.

SEQ ID NO:6 ColH collagenase.

SEQ ID NO:7 PTH.

SEQ ID NO:8 PTHrP.

SEQ ID NO:9 CBD fusion protein with PTH receptor antagonist.

SEQ ID NO:10 PTH(7-33)-CBD fusion protein

SEQ ID NO: 11 PTH/PTHrP antagonist Gly-Ser-PTH(1-33)

SEQ ID NO: 12 Thrombin recognition sequence.

## REFERENCES

1. Broadus A E et al. 1988. *N Engl. J Med.* 319:556-563.
2. Thiede M A et al. 1988. *Proc. Natl. Acad. Sci. USA* 85:4605-4609.
3. Orloff, J J et al. 1994. *Endocrine Rev.* 15:40-60.
4. Schilli, M B et al. 1997. *J. Invest. Dermatol.* 108:928-932.
5. Matsushita, O. et al. 1999. *J. Bacteriol.* 181:923-933.
6. Yoshihara, K. et al. 1994. *J. Bacteriol.* 176:6489-6496.
7. Jonsson K B, John M R, Gensure R C, Gardella T J, Juppner H. 2001. Tuberoinfundibular peptide 39 binds to the parathyroid hormone (PTH)/PTH-related peptide receptor, but functions as an antagonist. *Endocrinology* 142(2):704-9.
8. Schilli M B, Ray S, Paus R, Obit-Tabot E, Holick M F. 1997. Control of hair growth with parthyroid hormone (7-34). *J. Invest. Dermatol.* 108:928-932.
9. Peters E M, Foitzik K, Paus R, Ray S, Holick M F. 2001. A new strategy for modulating chemotherapy-induced alopecia, using PTH/PTHrP receptor agonist and antagonist. *J Invest Dermatol.* 117(2): 173-8.
10. Ballen K. 2007. Targeting the stem cell niche: squeezing blood from bones. *Bone Marrow Transplantation* 39:655-660.
11. Ballen K. et al. 2007. Phase I trial of parathyroid hormone to facilitate stem cell mobilization. *Biology of Blood and Marrow Transplantation* 13:838-843.
12. Calvi L M et al. 2003. Osteoblastic cells regulate the haematopoietic stem cell niche. *Nature* 425:841-846.
13. Wuthrich R P, Martin D, Bilezikian J P. 2007. The role of calcimimetics in treatment of hyperparathyroidism. *Eur. J. Clin. Invest.* 37:915-922.
14. Dolgos S. et al. 2008. Determinants of bone mass in end-stage renal failure patients at the time of kidney transplantation. *Clin. Transplant.* epub ahead of print.
15. Guise T A. 1997. Parathyroid hormone-related protein and bone metastases. *Cancer* 80(8 Suppl): 1572-80.
16. Henderson M A, Danks J A et al. 2006. Parathyroid hormone-related protein localization in breast cancers predicts improved prognosis. *Cancer Res.* 66:2250-56.
17. Saito H, Tsunenari T et al. 2005. Humanized monoclonal antibody against parathyroid hormone-related protein suppresses osteolytic bone metastasis of human breast cancer cells derived from MDA-MB-231. *Anticancer Res.* 25:3817-23. Erratum in 26:445.
18. Hoare S R, Usdin T B. 2002. Specificity and stability of a new PTH1 receptor antagonist, mouse TIP(7-39). *Peptides* 23:989-98.
19. Rickard D J et al. 2007. Intermittent treatment with parathyroid hormone as well as a non-peptide small molecule agonist of the PTH1 receptor inhibits adipocyte differentiation in human bone marrow stromal cells. *Bone* 39: 1361-1372.
20. McDonald I M et al. 2007. Discovery and characterization of novel, potent, non-peptide parathyroid hormone receptor antagonists. *J. Med Chem.* 50:4789-4792.
21. Stokman G et al. 2008. Enhanced mobilization of bone marrow cells does not ameliorate renal fibrosis. *Nephrol. Dial. Transplant* 23:483-491.
22. Abraham M et al. 2007. Enhanced unique pattern of hematopoietic cell mobilization induced by the CXCR4 antagonist 4F-benzoyl-TN14003. *Stem cells* 25:2158-2166.
23. Caceres G et al. 2003. Determination of chemotherapeutic activity in vivo by luminescent imaging of luciferase-transfected human tumors. *Anticancer Drugs* 14:569-74.
24. Jenkins D E et al. 2005. Bioluminescent human breast cancer cell lines that permit rapid and sensitive in vivo

- detection of mammary tumors and multiple metastases in immune deficient mice. *Breast Cancer Research* 7:R444-R454.
25. Compston J E. 2007. Skeletal actions of intermittent parathyroid hormone: effects on bone remodelling and structure. *Bone* 40(6):1447-52.
26. Fox J, Miller M A, Newman M K, Recker R R, Turner C H, Smith S Y. 2007. Effects of daily treatment with parathyroid hormone 1-84 for 16 months on density, architecture and biomechanical properties of cortical bone in adult ovariectomized rhesus monkeys. *Bone* 41(3):321-30.
27. Zhou H, Iida-Klein A, Lu S S, Ducayen-Knowles M, Levine L R, Dempster D W, Lindsay R. 2003. Anabolic action of parathyroid hormone on cortical and cancellous bone differs between axial and appendicular skeletal sites in mice. *Bone* 32(5):513-20.
28. Zaruba M M, Huber B C, Brunner S, Deindl E, David R, Fischer R, Assmann G, Herbach N, Grundmann S, Wanke R, Mueller-Hoecker J, Franz W M. 2008. Parathyroid hormone treatment after myocardial infarction promotes

- cardiac repair by enhanced neovascularization and cell survival. *Cardiovasc Res.* 77(4):722-31.
29. Schlüter K D, Schreckenberger R, Wenzel S. 2008. Stem cell mobilization versus stem cell homing: potential role for parathyroid hormone? *Cardiovasc Res.* 77(4):612-3.
30. Ishikawa et al., U.S. published patent application 20040053368.
31. Goldberg et al., International patent application WO 2005/082941.
32. Ishikawa T, Eguchi M, Wada M, Iwami Y, Tono K, Iwaguro H, Masuda H, Tamaki T, Asahara T. 2006. Establishment of a Functionally Active Collagen-Binding Vascular Endothelial Growth Factor Fusion Protein In Situ. *Arterioscler Thromb Vasc Biol.*
33. Ishikawa T, Terai H, Yamamoto T, Harada K, Kitajima T. 2003. Delivery of a growth factor fusion protein having collagen-binding activity to wound tissues. *Artif Organs.* 27(2): 147-54.
34. Crine et al., U.S. published patent application 20060014687.
- All patents, patent documents, and other references cited are incorporated by reference.

## SEQUENCE LISTING

<160> NUMBER OF SEQ ID NOS: 17

<210> SEQ ID NO 1

<211> LENGTH: 158

<212> TYPE: PRT

<213> ORGANISM: Artificial Sequence

<220> FEATURE:

<223> OTHER INFORMATION: Synthetic: Fusion protein containing parathyroid hormone segment and collagen-binding domain

<400> SEQUENCE: 1

```

Ser Val Ser Glu Ile Gln Leu Met His Asn Leu Gly Lys His Leu Asn
 1             5             10             15

Ser Met Glu Arg Val Glu Trp Leu Arg Lys Lys Leu Gln Asp Val His
             20             25             30

Asn Gly Ile Asn Ser Pro Val Tyr Pro Ile Gly Thr Glu Lys Glu Pro
 35             40             45

Asn Asn Ser Lys Glu Thr Ala Ser Gly Pro Ile Val Pro Gly Ile Pro
 50             55             60

Val Ser Gly Thr Ile Glu Asn Thr Ser Asp Gln Asp Tyr Phe Tyr Phe
 65             70             75             80

Asp Val Ile Thr Pro Gly Glu Val Lys Ile Asp Ile Asn Lys Leu Gly
             85             90             95

Tyr Gly Gly Ala Thr Trp Val Val Tyr Asp Glu Asn Asn Asn Ala Val
             100            105            110

Ser Tyr Ala Thr Asp Asp Gly Gln Asn Leu Ser Gly Lys Phe Lys Ala
             115            120            125

Asp Lys Pro Gly Arg Tyr Tyr Ile His Leu Tyr Met Phe Asn Gly Ser
             130            135            140

Tyr Met Pro Tyr Arg Ile Asn Ile Glu Gly Ser Val Gly Arg
             145            150            155

```

<210> SEQ ID NO 2

<211> LENGTH: 251

<212> TYPE: PRT

<213> ORGANISM: Artificial Sequence

<220> FEATURE:

<223> OTHER INFORMATION: Synthetic: Fusion protein containing parathyroid hormone fragment and collagen-binding domain and

-continued

polycystic kidney disease domain of ColH.

<400> SEQUENCE: 2

```

Ser Val Ser Glu Ile Gln Leu Met His Asn Leu Gly Lys His Leu Asn
1           5           10           15
Ser Met Glu Arg Val Glu Trp Leu Arg Lys Lys Leu Gln Asp Val His
          20           25           30
Asn Gly Ile Pro Glu Ile Lys Asp Leu Ser Glu Asn Lys Leu Pro Val
          35           40           45
Ile Tyr Met His Val Pro Lys Ser Gly Ala Leu Asn Gln Lys Val Val
          50           55           60
Phe Tyr Gly Lys Gly Thr Tyr Asp Pro Asp Gly Ser Ile Ala Gly Tyr
65           70           75           80
Gln Trp Asp Phe Gly Asp Gly Ser Asp Phe Ser Ser Glu Gln Asn Pro
          85           90           95
Ser His Val Tyr Thr Lys Lys Gly Glu Tyr Thr Val Thr Leu Arg Val
          100          105          110
Met Asp Ser Ser Gly Gln Met Ser Glu Lys Thr Met Lys Ile Lys Ile
          115          120          125
Thr Asp Pro Val Tyr Pro Ile Gly Thr Glu Lys Glu Pro Asn Asn Ser
          130          135          140
Lys Glu Thr Ala Ser Gly Pro Ile Val Pro Gly Ile Pro Val Ser Gly
145          150          155          160
Thr Ile Glu Asn Thr Ser Asp Gln Asp Tyr Phe Tyr Phe Asp Val Ile
          165          170          175
Thr Pro Gly Glu Val Lys Ile Asp Ile Asn Lys Leu Gly Tyr Gly Gly
          180          185          190
Ala Thr Trp Val Val Tyr Asp Glu Asn Asn Asn Ala Val Ser Tyr Ala
          195          200          205
Thr Asp Asp Gly Gln Asn Leu Ser Gly Lys Phe Lys Ala Asp Lys Pro
          210          215          220
Gly Arg Tyr Tyr Ile His Leu Tyr Met Phe Asn Gly Ser Tyr Met Pro
225          230          235          240
Tyr Arg Ile Asn Ile Glu Gly Ser Val Gly Arg
          245          250

```

<210> SEQ ID NO 3

<211> LENGTH: 5464

<212> TYPE: DNA

<213> ORGANISM: Artificial Sequence

<220> FEATURE:

<223> OTHER INFORMATION: Synthetic: Expression vector

<400> SEQUENCE: 3

```

agcttatcga ctgcacgggtg caccaatgct tctggcgta ggcagccatc ggaagctgtg      60
gtatggctgt gcaggctgta aatcactgca taattcgtgt cgctcaaggc gcaactcccg      120
tctggataat gttttttgcg ccgacatcat aacggttctg gcaaatattc tgaatgagc      180
tgttgacaat taatcatcgg ctctgataat gtgtggaatt gtgagcggat aacaatttca      240
cacaggaaac agtattcatg tcccctatac taggttattg gaaaattaag ggccttgtagc      300
aaccactcgc acttcttttg gaatatcttg aagaaaaata tgaagagcat ttgtatgagc      360
gcatgaagg tgataaatgg cgaacaaaa agtttgaatt gggtttgag tttccaate      420
ttccttatta tattgatggt gatgttaaat taacacagtc tatggccatc atacgttata      480
tagctgacaa gcacaacatg ttgggtggtt gtccaaaaga gcgtgcagag atttcaatgc      540

```

-continued

---

ttgaaggagc	ggttttggat	attagatacg	gtgtttcgag	aattgcatat	agtaaagact	600
ttgaaactct	caaagttgat	tttcttagca	agctacctga	aatgctgaaa	atgttcgaag	660
atcgtttatg	tcataaaaca	tatttaaatg	gtgatcatgt	aaccocatcct	gacttcatgt	720
tgtatgacgc	tcttgatggt	gttttataca	tggaaccaat	gtgcctggat	gegtcccaa	780
aattagtttg	ttttaaaaaa	cgtattgaag	ctatcccaca	aattgataag	tacttgaaat	840
ccagcaagta	tatagcatgg	cctttgcagg	gctggcaagc	cacgtttggg	ggtggcgacc	900
atcctccaaa	atcggtctg	atcgaaggtc	gttctgtgag	tgaaatacag	cttatgcata	960
acctgggaaa	acatctgaac	tcgatggaga	gagtagaatg	gctgcgtaag	aagctgcagg	1020
atgtgcacaa	tggaattaat	tccccggat	atccaatagg	cactgaaaaa	gaaccaaata	1080
acagtaaaga	aactgcaagt	ggtccaatag	taccaggat	acctgttagt	ggaacctag	1140
aaaatacaag	tgatcaagat	tatttctatt	ttgatgttat	aacaccagga	gaagtaaaaa	1200
tagatataaa	taaattaggg	tacggaggag	ctacttgggt	agtatatgat	gaaaataata	1260
atgcagtatc	ttatgccact	gatgatgggc	aaaatttaag	tggaaagt	aaggcagata	1320
aaccaggtag	atattacatc	catctttaca	tgtttaatgg	tagttatatg	ccatatagaa	1380
ttaatataga	aggttcagta	ggaagataat	attttattag	ttgaggtaac	tccactcgaa	1440
ttggtcgact	cgagcgccg	catcgtgact	gactgacgat	ctgcctcgcg	cgtttcggtg	1500
atgacggtga	aaacctctga	cacatgcagc	tccccggagc	ggtcacagct	tgtctgtaag	1560
cggtatgccg	gagcagacaa	gcccgcagg	gcgctcagc	gggtgttggc	gggtgtcggg	1620
gcgagccat	gaccagtc	cgtagcgata	gaggagtga	taattcttga	agacgaaagg	1680
gcctcgtgat	acgcctat	ttataggtta	atgtcatgat	aataatggtt	tcttagacgt	1740
caggtggcac	tttccggga	aatgtgcgcg	gaaccctat	ttgtttat	ttctaatac	1800
attcaaatat	gtatccgctc	atgagacaat	aacctgata	aatgcttcaa	taatattgaa	1860
aaaggaagag	tatgagtatt	caacatttcc	gtgtcgcct	tattccctt	tttgcggcat	1920
tttgccttcc	tgttttggc	caccagaaa	cgctggtgaa	agtaaaagat	gctgaagatc	1980
agttgggtgc	acgagtgggt	tacatcgaac	tggatctcaa	cagcggtaag	atccttgaga	2040
gttttcgccc	cgaagaacgt	tttccaatga	tgagcacttt	taaagttctg	ctatgtggcg	2100
eggtattatc	ccgtgttgac	gcccggcaag	agcaactcgg	tcgccgata	cactattctc	2160
agaatgactt	ggttgagtac	tcaccagtca	cagaaaagca	tcttacggat	ggcatgacag	2220
taagagaatt	atgcagtget	gccataacca	tgagtataaa	cactgcggcc	aacttacttc	2280
tgacaacgat	cggaggaccg	aaggagctaa	ccgctttttt	gcacaacatg	ggggatcatg	2340
taactcgctt	tgatcgttgg	gaaccggagc	tgaatgaagc	cataccaaac	gacgagcgtg	2400
acaccacgat	gcctgcagca	atggcaacaa	cgttgcgcaa	actattaact	ggcgaactac	2460
ttactctagc	ttccccgcaa	caattaatag	actggatgga	ggcggataaa	gttgcaggac	2520
cacttctgcg	ctcgccctt	ccggctggct	ggtttattgc	tgataaatct	ggagccggtg	2580
agcgtgggtc	tcgcggtatc	attgcagcac	tggggccaga	tggtaaagcc	tcccgtatcg	2640
tagttatcta	cacgacgggg	agtcaggcaa	ctatggatga	acgaaataga	cagatcgctg	2700
agatagggtc	ctcactgatt	aagcattggg	aactgtcaga	ccaagtttac	tcatatatac	2760
tttagattga	tttaaaactt	catttttaat	ttaaaaggat	ctaggtgaag	atcctttttg	2820
ataatctcat	gaccaaaatc	ccttaacgtg	agttttcggt	ccactgagcg	tcagaccccg	2880

-continued

---

tagaaaagat	caaaggatct	tcttgagatc	ctttttttct	gcgcgtaatc	tgctgcttgc	2940
aaacaaaaaa	accaccgcta	ccagcgggtg	tttgtttgcc	ggatcaagag	ctaccaactc	3000
tttttcgaa	ggtaactggc	ttcagcagag	cgagataacc	aaatactgtc	cttctagtgt	3060
agccgtagtt	aggccaccac	ttcaagaact	ctgtagcacc	gcctacatac	ctcgtcttgc	3120
taatcctggt	accagtggct	gctgccagtg	gcgataagtc	gtgtcttacc	gggttggtgact	3180
caagacgata	gttaccggat	aaggcgcagc	ggtcgggctg	aacggggggt	tcgtgcacac	3240
agcccagctt	ggagcgaacg	acctacaccg	aactgagata	cctacagcgt	gagctatgag	3300
aaagcggcac	gcttcccga	gggagaaagg	cggacaggt	tccggtaagc	ggcagggctc	3360
gaacaggaga	gcgcacgagg	gagcttccag	gggaaacgc	ctggtatctt	tatagtctctg	3420
tcgggtttcg	ccacctctga	cttgagcgtc	gatttttgtg	atgctcgtca	ggggggcgga	3480
gcctatggaa	aaacggcagc	aacgcggcct	ttttacggtt	cctggccttt	tgctggcctt	3540
ttgctcacat	gttctttctc	gcgttatccc	ctgattctgt	ggataaccgt	attaccgcct	3600
ttgagtgagc	tgataccgct	cgccgcagcc	gaacgaccga	gcgcagcggg	tcagtgagcg	3660
aggaagcggg	agagcgcctg	atgcgggtatt	ttctccttac	gcatctgtgc	ggatattcac	3720
accgcataaa	ttccgacacc	atcgaatggt	gcaaacctt	tcgcggtatg	gcatgatagc	3780
gcccggaaga	gagtcaattc	agggtgggtg	atgtgaaacc	agtaacgtta	tacgatgtcg	3840
cagagtatgc	cgggtgtctc	tatcagaccg	tttcccgcgt	ggtgaaccag	gccagccacg	3900
tttctgcgaa	aacgcgggaa	aaagtgggaag	cggcgatggc	ggagctgaat	tacattccca	3960
accgcgtggc	acaacaactg	gcgggcaaac	agtcgttgct	gattggcgtt	gccacctcca	4020
gtctggccct	gcacgcgcgc	tcgcaaattg	tcgcggcgat	taaatctcgc	gccgatcaac	4080
tgggtgccag	cgtgggtggtg	tcgatggtag	aacgaagcgg	cgtcgaagcc	tgtaaagcgg	4140
cggtgcaaaa	tcttctcgcg	caacgcgtca	gtgggctgat	cattaactat	ccgctggatg	4200
accaggatgc	cattgctgtg	gaagctgcct	gcaactaatg	tcggcggtta	tttcttgatg	4260
tctctgacca	gacaccctac	aacagtatta	ttttctccca	tgaagacggg	acgcgactgg	4320
gcgtggagca	tctggtcgca	ttgggtcacc	agcaaatcgc	gctgttagcg	ggccattaa	4380
gttctgtctc	ggcgcgtctg	cgtctggctg	gctggcataa	atatctcact	cgcaatcaaa	4440
ttcagccgat	agcggaaacg	gaaggcgact	ggagtgccat	gtccggtttt	caacaaacca	4500
tgcaaatgct	gaatgagggc	atcgttccca	ctgcgatgct	ggttgccaac	gatcagatgg	4560
cgtctggcgc	aatgcgcgcc	attaccgagt	cgggctcgcg	cgttggtgcg	gatatactcg	4620
tagtgggata	cgacgatacc	gaagacagct	catgttatat	cccgcggtta	accaccatca	4680
aacaggattt	tcgctctctg	gggcaaacca	gcgtggaccg	cttgctgcaa	ctctctcagg	4740
gccaggcggg	gaagggcaat	cagctgttgc	cgtctcact	ggtgaaaaga	aaaaccaccc	4800
tgggcccaca	tacgcaaac	gcctctcccc	gcgcgttggc	cgattcatta	atgcagctgg	4860
cacgacaggt	ttcccactg	gaaagcgggc	agtgagcgca	acgcaattaa	tgtgagttag	4920
ctcactcatt	aggcacccca	ggctttacac	tttatgcttc	cggtcgtat	gttgtgtgga	4980
attgtgagcg	gataacaatt	tcacacagga	aacagctatg	accatgatta	cggattcact	5040
ggcgtctggt	ttacaacgtc	gtgactggga	aaaccctggc	gttaccacac	ttaatgcct	5100
tcgagcacat	ccccctttcg	ccagctggcg	taatagcgaa	gaggcccga	ccgatcgccc	5160
ttccaacag	ttgcgcagcc	tgaatggcga	atggcgtttt	gcctggtttc	cggcaccaga	5220
agcgtgctcg	gaaagctggc	tggagtgcga	tcttctctgag	gccgatactg	tcgtctctcc	5280

-continued

---

```

ctcaaaactgg cagatgcacg gttacgatgc gcccatctac accaacgtaa cctatcccat 5340
tacgggtcaat cgcgcgtttg ttcccacgga gaatccgacg ggttggtact cgctcacatt 5400
taatgttgat gaaagctggc tacaggaagg ccagacgcga attatttttg atggcggttg 5460
aatt 5464

```

```

<210> SEQ ID NO 4
<211> LENGTH: 383
<212> TYPE: PRT
<213> ORGANISM: Artificial Sequence
<220> FEATURE:
<223> OTHER INFORMATION: Synthetic: GST-PTH-CBD fusion protein

```

```

<400> SEQUENCE: 4

```

```

Met Ser Pro Ile Leu Gly Tyr Trp Lys Ile Lys Gly Leu Val Gln Pro
1          5          10          15
Thr Arg Leu Leu Leu Glu Tyr Leu Glu Glu Lys Tyr Glu Glu His Leu
20          25          30
Tyr Glu Arg Asp Glu Gly Asp Lys Trp Arg Asn Lys Lys Phe Glu Leu
35          40          45
Gly Leu Glu Phe Pro Asn Leu Pro Tyr Tyr Ile Asp Gly Asp Val Lys
50          55          60
Leu Thr Gln Ser Met Ala Ile Ile Arg Tyr Ile Ala Asp Lys His Asn
65          70          75          80
Met Leu Gly Gly Cys Pro Lys Glu Arg Ala Glu Ile Ser Met Leu Glu
85          90          95
Gly Ala Val Leu Asp Ile Arg Tyr Gly Val Ser Arg Ile Ala Tyr Ser
100         105         110
Lys Asp Phe Glu Thr Leu Lys Val Asp Phe Leu Ser Lys Leu Pro Glu
115         120         125
Met Leu Lys Met Phe Glu Asp Arg Leu Cys His Lys Thr Tyr Leu Asn
130         135         140
Gly Asp His Val Thr His Pro Asp Phe Met Leu Tyr Asp Ala Leu Asp
145         150         155         160
Val Val Leu Tyr Met Asp Pro Met Cys Leu Asp Ala Phe Pro Lys Leu
165         170         175
Val Cys Phe Lys Lys Arg Ile Glu Ala Ile Pro Gln Ile Asp Lys Tyr
180         185         190
Leu Lys Ser Ser Lys Tyr Ile Ala Trp Pro Leu Gln Gly Trp Gln Ala
195         200         205
Thr Phe Gly Gly Gly Asp His Pro Pro Lys Ser Asp Leu Ile Glu Gly
210         215         220
Arg Ser Val Ser Glu Ile Gln Leu Met His Asn Leu Gly Lys His Leu
225         230         235         240
Asn Ser Met Glu Arg Val Glu Trp Leu Arg Lys Lys Leu Gln Asp Val
245         250         255
His Asn Gly Ile Asn Ser Pro Val Tyr Pro Ile Gly Thr Glu Lys Glu
260         265         270
Pro Asn Asn Ser Lys Glu Thr Ala Ser Gly Pro Ile Val Pro Gly Ile
275         280         285
Pro Val Ser Gly Thr Ile Glu Asn Thr Ser Asp Gln Asp Tyr Phe Tyr
290         295         300
Phe Asp Val Ile Thr Pro Gly Glu Val Lys Ile Asp Ile Asn Lys Leu
305         310         315         320

```

-continued

```

Gly Tyr Gly Gly Ala Thr Trp Val Val Tyr Asp Glu Asn Asn Asn Ala
      325                                330                335
Val Ser Tyr Ala Thr Asp Asp Gly Gln Asn Leu Ser Gly Lys Phe Lys
      340                               345                350
Ala Asp Lys Pro Gly Arg Tyr Tyr Ile His Leu Tyr Met Phe Asn Gly
      355                               360                365
Ser Tyr Met Pro Tyr Arg Ile Asn Ile Glu Gly Ser Val Gly Arg
      370                               375                380

```

```

<210> SEQ ID NO 5
<211> LENGTH: 4
<212> TYPE: PRT
<213> ORGANISM: Artificial Sequence
<220> FEATURE:
<223> OTHER INFORMATION: Synthetic: Factor Xa recognition sequence

```

```
<400> SEQUENCE: 5
```

```
Ile Glu Gly Arg
1
```

```

<210> SEQ ID NO 6
<211> LENGTH: 1021
<212> TYPE: PRT
<213> ORGANISM: Clostridium histolyticum

```

```
<400> SEQUENCE: 6
```

```

Met Lys Arg Lys Cys Leu Ser Lys Arg Leu Met Leu Ala Ile Thr Met
1      5      10      15
Ala Thr Ile Phe Thr Val Asn Ser Thr Leu Pro Ile Tyr Ala Ala Val
      20      25      30
Asp Lys Asn Asn Ala Thr Ala Ala Val Gln Asn Glu Ser Lys Arg Tyr
      35      40      45
Thr Val Ser Tyr Leu Lys Thr Leu Asn Tyr Tyr Asp Leu Val Asp Leu
      50      55      60
Leu Val Lys Thr Glu Ile Glu Asn Leu Pro Asp Leu Phe Gln Tyr Ser
      65      70      75      80
Ser Asp Ala Lys Glu Phe Tyr Gly Asn Lys Thr Arg Met Ser Phe Ile
      85      90      95
Met Asp Glu Ile Gly Arg Arg Ala Pro Gln Tyr Thr Glu Ile Asp His
      100     105     110
Lys Gly Ile Pro Thr Leu Val Glu Val Val Arg Ala Gly Phe Tyr Leu
      115     120     125
Gly Phe His Asn Lys Glu Leu Asn Glu Ile Asn Lys Arg Ser Phe Lys
      130     135     140
Glu Arg Val Ile Pro Ser Ile Leu Ala Ile Gln Lys Asn Pro Asn Phe
      145     150     155     160
Lys Leu Gly Thr Glu Val Gln Asp Lys Ile Val Ser Ala Thr Gly Leu
      165     170     175
Leu Ala Gly Asn Glu Thr Ala Pro Pro Glu Val Val Asn Asn Phe Thr
      180     185     190
Pro Ile Leu Gln Asp Cys Ile Lys Asn Ile Asp Arg Tyr Ala Leu Asp
      195     200     205
Asp Leu Lys Ser Lys Ala Leu Phe Asn Val Leu Ala Ala Pro Thr Tyr
      210     215     220
Asp Ile Thr Glu Tyr Leu Arg Ala Thr Lys Glu Lys Pro Glu Asn Thr
      225     230     235     240
Pro Trp Tyr Gly Lys Ile Asp Gly Phe Ile Asn Glu Leu Lys Lys Leu

```



-continued

245				250				255							
Ala	Leu	Tyr	Gly	Lys	Ile	Asn	Asp	Asn	Asn	Ser	Trp	Ile	Ile	Asp	Asn
			260											270	
Gly	Ile	Tyr	His	Ile	Ala	Pro	Leu	Gly	Lys	Leu	His	Ser	Asn	Asn	Lys
			275											285	
Ile	Gly	Ile	Glu	Thr	Leu	Thr	Glu	Val	Met	Lys	Val	Tyr	Pro	Tyr	Leu
			290											300	
Ser	Met	Gln	His	Leu	Gln	Ser	Ala	Asp	Gln	Ile	Lys	Arg	His	Tyr	Asp
															320
Ser	Lys	Asp	Ala	Glu	Gly	Asn	Lys	Ile	Pro	Leu	Asp	Lys	Phe	Lys	Lys
															335
Glu	Gly	Lys	Glu	Lys	Tyr	Cys	Pro	Lys	Thr	Tyr	Thr	Phe	Asp	Asp	Gly
															350
Lys	Val	Ile	Ile	Lys	Ala	Gly	Ala	Arg	Val	Glu	Glu	Glu	Lys	Val	Lys
															365
Arg	Leu	Tyr	Trp	Ala	Ser	Lys	Glu	Val	Asn	Ser	Gln	Phe	Phe	Arg	Val
															380
Tyr	Gly	Ile	Asp	Lys	Pro	Leu	Glu	Glu	Gly	Asn	Pro	Asp	Asp	Ile	Leu
															400
Thr	Met	Val	Ile	Tyr	Asn	Ser	Pro	Glu	Glu	Tyr	Lys	Leu	Asn	Ser	Val
															415
Leu	Tyr	Gly	Tyr	Asp	Thr	Asn	Asn	Gly	Gly	Met	Tyr	Ile	Glu	Pro	Glu
															430
Gly	Thr	Phe	Phe	Thr	Tyr	Glu	Arg	Glu	Ala	Gln	Glu	Ser	Thr	Tyr	Thr
															445
Leu	Glu	Glu	Leu	Phe	Arg	His	Glu	Tyr	Thr	His	Tyr	Leu	Gln	Gly	Arg
															460
Tyr	Ala	Val	Pro	Gly	Gln	Trp	Gly	Arg	Thr	Lys	Leu	Tyr	Asp	Asn	Asp
															480
Arg	Leu	Thr	Trp	Tyr	Glu	Glu	Gly	Gly	Ala	Glu	Leu	Phe	Ala	Gly	Ser
															495
Thr	Arg	Thr	Ser	Gly	Ile	Leu	Pro	Arg	Lys	Ser	Ile	Val	Ser	Asn	Ile
															510
His	Asn	Thr	Thr	Arg	Asn	Asn	Arg	Tyr	Lys	Leu	Ser	Asp	Thr	Val	His
															525
Ser	Lys	Tyr	Gly	Ala	Ser	Phe	Glu	Phe	Tyr	Asn	Tyr	Ala	Cys	Met	Phe
															540
Met	Asp	Tyr	Met	Tyr	Asn	Lys	Asp	Met	Gly	Ile	Leu	Asn	Lys	Leu	Asn
															560
Asp	Leu	Ala	Lys	Asn	Asn	Asp	Val	Asp	Gly	Tyr	Asp	Asn	Tyr	Ile	Arg
															575
Asp	Leu	Ser	Ser	Asn	Tyr	Ala	Leu	Asn	Asp	Lys	Tyr	Gln	Asp	His	Met
															590
Gln	Glu	Arg	Ile	Asp	Asn	Tyr	Glu	Asn	Leu	Thr	Val	Pro	Phe	Val	Ala
															605
Asp	Asp	Tyr	Leu	Val	Arg	His	Ala	Tyr	Lys	Asn	Pro	Asn	Glu	Ile	Tyr
															620
Ser	Glu	Ile	Ser	Glu	Val	Ala	Lys	Leu	Lys	Asp	Ala	Lys	Ser	Glu	Val
															640
Lys	Lys	Ser	Gln	Tyr	Phe	Ser	Thr	Phe	Thr	Leu	Arg	Gly	Ser	Tyr	Thr
															655
Gly	Gly	Ala	Ser	Lys	Gly	Lys	Leu	Glu	Asp	Gln	Lys	Ala	Met	Asn	Lys
															670

-continued

---

Phe Ile Asp Asp Ser Leu Lys Lys Leu Asp Thr Tyr Ser Trp Ser Gly  
 675 680 685

Tyr Lys Thr Leu Thr Ala Tyr Phe Thr Asn Tyr Lys Val Asp Ser Ser  
 690 695 700

Asn Arg Val Thr Tyr Asp Val Val Phe His Gly Tyr Leu Pro Asn Glu  
 705 710 715 720

Gly Asp Ser Lys Asn Ser Leu Pro Tyr Gly Lys Ile Asn Gly Thr Tyr  
 725 730 735

Lys Gly Thr Glu Lys Glu Lys Ile Lys Phe Ser Ser Glu Gly Ser Phe  
 740 745 750

Asp Pro Asp Gly Lys Ile Val Ser Tyr Glu Trp Asp Phe Gly Asp Gly  
 755 760 765

Asn Lys Ser Asn Glu Glu Asn Pro Glu His Ser Tyr Asp Lys Val Gly  
 770 775 780

Thr Tyr Thr Val Lys Leu Lys Val Thr Asp Asp Lys Gly Glu Ser Ser  
 785 790 795 800

Val Ser Thr Thr Thr Ala Glu Ile Lys Asp Leu Ser Glu Asn Lys Leu  
 805 810 815

Pro Val Ile Tyr Met His Val Pro Lys Ser Gly Ala Leu Asn Gln Lys  
 820 825 830

Val Val Phe Tyr Gly Lys Gly Thr Tyr Asp Pro Asp Gly Ser Ile Ala  
 835 840 845

Gly Tyr Gln Trp Asp Phe Gly Asp Gly Ser Asp Phe Ser Ser Glu Gln  
 850 855 860

Asn Pro Ser His Val Tyr Thr Lys Lys Gly Glu Tyr Thr Val Thr Leu  
 865 870 875 880

Arg Val Met Asp Ser Ser Gly Gln Met Ser Glu Lys Thr Met Lys Ile  
 885 890 895

Lys Ile Thr Asp Pro Val Tyr Pro Ile Gly Thr Glu Lys Glu Pro Asn  
 900 905 910

Asn Ser Lys Glu Thr Ala Ser Gly Pro Ile Val Pro Gly Ile Pro Val  
 915 920 925

Ser Gly Thr Ile Glu Asn Thr Ser Asp Gln Asp Tyr Phe Tyr Phe Asp  
 930 935 940

Val Ile Thr Pro Gly Glu Val Lys Ile Asp Ile Asn Lys Leu Gly Tyr  
 945 950 955 960

Gly Gly Ala Thr Trp Val Val Tyr Asp Glu Asn Asn Asn Ala Val Ser  
 965 970 975

Tyr Ala Thr Asp Asp Gly Gln Asn Leu Ser Gly Lys Phe Lys Ala Asp  
 980 985 990

Lys Pro Gly Arg Tyr Tyr Ile His Leu Tyr Met Phe Asn Gly Ser Tyr  
 995 1000 1005

Met Pro Tyr Arg Ile Asn Ile Glu Gly Ser Val Gly Arg  
 1010 1015 1020

<210> SEQ ID NO 7  
 <211> LENGTH: 84  
 <212> TYPE: PRT  
 <213> ORGANISM: Homo sapiens

<400> SEQUENCE: 7

Ser Val Ser Glu Ile Gln Leu Met His Asn Leu Gly Lys His Leu Asn  
 1 5 10 15

Ser Met Glu Arg Val Glu Trp Leu Arg Lys Lys Leu Gln Asp Val His

-continued

---

```

      20          25          30
Asn Phe Val Ala Leu Gly Ala Pro Leu Ala Pro Arg Asp Ala Gly Ser
      35          40          45
Gln Arg Pro Arg Lys Lys Glu Asp Asn Val Leu Val Glu Ser His Glu
      50          55          60
Lys Ser Leu Gly Glu Ala Asp Lys Ala Asp Val Asn Val Leu Thr Lys
      65          70          75          80
Ala Lys Ser Gln

```

```

<210> SEQ ID NO 8
<211> LENGTH: 141
<212> TYPE: PRT
<213> ORGANISM: Homo sapiens

```

```

<400> SEQUENCE: 8

```

```

Ala Val Ser Glu His Gln Leu Leu His Asp Lys Gly Lys Ser Ile Gln
  1          5          10          15
Asp Leu Arg Arg Arg Phe Phe Leu His His Leu Ile Ala Glu Ile His
      20          25          30
Thr Ala Glu Ile Arg Ala Thr Ser Glu Val Ser Pro Asn Ser Lys Pro
      35          40          45
Ser Pro Asn Thr Lys Asn His Pro Val Arg Phe Gly Ser Asp Asp Glu
      50          55          60
Gly Arg Tyr Leu Thr Gln Glu Thr Asn Lys Val Glu Thr Tyr Lys Glu
      65          70          75          80
Gln Pro Leu Lys Thr Pro Gly Lys Lys Lys Lys Gly Lys Pro Gly Lys
      85          90          95
Arg Lys Glu Gln Glu Lys Lys Lys Arg Arg Thr Arg Ser Ala Trp Leu
      100          105          110
Asp Ser Gly Val Thr Gly Ser Gly Leu Glu Gly Asp His Leu Ser Asp
      115          120          125
Thr Ser Thr Thr Ser Leu Glu Leu Asp Ser Arg Arg His
      130          135          140

```

```

<210> SEQ ID NO 9
<211> LENGTH: 160
<212> TYPE: PRT
<213> ORGANISM: Artificial Sequence
<220> FEATURE:
<223> OTHER INFORMATION: Synthetic: Gly-Ser-PTH(1-33)-CBD fusion
      protein

```

```

<400> SEQUENCE: 9

```

```

Gly Ser Ser Val Ser Glu Ile Gln Leu Met His Asn Leu Gly Lys His
  1          5          10          15
Leu Asn Ser Met Glu Arg Val Glu Trp Leu Arg Lys Lys Leu Gln Asp
      20          25          30
Val His Asn Gly Ile Asn Ser Pro Val Tyr Pro Ile Gly Thr Glu Lys
      35          40          45
Glu Pro Asn Asn Ser Lys Glu Thr Ala Ser Gly Pro Ile Val Pro Gly
      50          55          60
Ile Pro Val Ser Gly Thr Ile Glu Asn Thr Ser Asp Gln Asp Tyr Phe
      65          70          75          80
Tyr Phe Asp Val Ile Thr Pro Gly Glu Val Lys Ile Asp Ile Asn Lys
      85          90          95
Leu Gly Tyr Gly Gly Ala Thr Trp Val Val Tyr Asp Glu Asn Asn Asn
      100          105          110

```

-continued

---

Ala Val Ser Tyr Ala Thr Asp Asp Gly Gln Asn Leu Ser Gly Lys Phe  
 115 120 125

Lys Ala Asp Lys Pro Gly Arg Tyr Tyr Ile His Leu Tyr Met Phe Asn  
 130 135 140

Gly Ser Tyr Met Pro Tyr Arg Ile Asn Ile Glu Gly Ser Val Gly Arg  
 145 150 155 160

<210> SEQ ID NO 10  
 <211> LENGTH: 152  
 <212> TYPE: PRT  
 <213> ORGANISM: Artificial Sequence  
 <220> FEATURE:  
 <223> OTHER INFORMATION: Synthetic: PTH(7-33)-CBD fusion protein

<400> SEQUENCE: 10

Leu Met His Asn Leu Gly Lys His Leu Asn Ser Met Glu Arg Val Glu  
 1 5 10 15

Trp Leu Arg Lys Lys Leu Gln Asp Val His Asn Gly Ile Asn Ser Pro  
 20 25 30

Val Tyr Pro Ile Gly Thr Glu Lys Glu Pro Asn Asn Ser Lys Glu Thr  
 35 40 45

Ala Ser Gly Pro Ile Val Pro Gly Ile Pro Val Ser Gly Thr Ile Glu  
 50 55 60

Asn Thr Ser Asp Gln Asp Tyr Phe Tyr Phe Asp Val Ile Thr Pro Gly  
 65 70 75 80

Glu Val Lys Ile Asp Ile Asn Lys Leu Gly Tyr Gly Gly Ala Thr Trp  
 85 90 95

Val Val Tyr Asp Glu Asn Asn Asn Ala Val Ser Tyr Ala Thr Asp Asp  
 100 105 110

Gly Gln Asn Leu Ser Gly Lys Phe Lys Ala Asp Lys Pro Gly Arg Tyr  
 115 120 125

Tyr Ile His Leu Tyr Met Phe Asn Gly Ser Tyr Met Pro Tyr Arg Ile  
 130 135 140

Asn Ile Glu Gly Ser Val Gly Arg  
 145 150

<210> SEQ ID NO 11  
 <211> LENGTH: 35  
 <212> TYPE: PRT  
 <213> ORGANISM: Artificial Sequence  
 <220> FEATURE:  
 <223> OTHER INFORMATION: Synthetic: PTH(1-33) with Gly-Ser amino  
 terminal extension

<400> SEQUENCE: 11

Gly Ser Ser Val Ser Glu Ile Gln Leu Met His Asn Leu Gly Lys His  
 1 5 10 15

Leu Asn Ser Met Glu Arg Val Glu Trp Leu Arg Lys Lys Leu Gln Asp  
 20 25 30

Val His Asn  
 35

<210> SEQ ID NO 12  
 <211> LENGTH: 6  
 <212> TYPE: PRT  
 <213> ORGANISM: Artificial Sequence  
 <220> FEATURE:  
 <223> OTHER INFORMATION: Synthetic: Thrombin cleavage sequence

<400> SEQUENCE: 12

-continued

Leu Val Pro Arg Gly Ser  
1 5

<210> SEQ ID NO 13  
<211> LENGTH: 111  
<212> TYPE: PRT  
<213> ORGANISM: Artificial Sequence  
<220> FEATURE:  
<223> OTHER INFORMATION: Synthetic: ColG 3b

<400> SEQUENCE: 13

Lys Glu Lys Glu Asn Asn Asp Ser Ser Asp Lys Ala Thr Val Ile Pro  
1 5 10 15  
Asn Phe Asn Thr Thr Met Gln Gly Ser Leu Leu Gly Asp Asp Ser Arg  
20 25 30  
Asp Tyr Tyr Ser Phe Glu Val Lys Glu Glu Gly Glu Val Asn Ile Glu  
35 40 45  
Leu Asp Lys Lys Asp Glu Phe Gly Val Thr Trp Thr Leu His Pro Glu  
50 55 60  
Ser Asn Ile Asn Asp Arg Ile Thr Tyr Gly Gln Val Asp Gly Asn Lys  
65 70 75 80  
Val Ser Asn Lys Val Lys Leu Arg Pro Gly Lys Tyr Tyr Leu Leu Val  
85 90 95  
Tyr Lys Tyr Ser Gly Ser Gly Asn Tyr Glu Leu Arg Val Asn Lys  
100 105 110

<210> SEQ ID NO 14  
<211> LENGTH: 113  
<212> TYPE: PRT  
<213> ORGANISM: Artificial Sequence  
<220> FEATURE:  
<223> OTHER INFORMATION: Synthetic: ColA3b

<400> SEQUENCE: 14

Lys Glu Val Glu Asn Asn Asn Asp Phe Asp Lys Ala Met Lys Val Asp  
1 5 10 15  
Ser Asn Ser Lys Ile Val Gly Thr Leu Ser Asn Asp Asp Leu Lys Asp  
20 25 30  
Ile Tyr Ser Ile Asp Ile Lys Asn Pro Ser Asp Leu Asn Ile Val Val  
35 40 45  
Glu Asn Leu Asp Asn Ile Lys Met Asn Trp Leu Leu Tyr Ser Ala Asp  
50 55 60  
Asp Leu Ser Asn Tyr Val Asp Tyr Ala Asn Ala Asp Gly Asn Lys Leu  
65 70 75 80  
Ser Asn Thr Cys Lys Leu Asn Pro Gly Lys Tyr Tyr Leu Cys Val Tyr  
85 90 95  
Gln Phe Glu Asn Ser Gly Thr Gly Asn Tyr Thr Val Asn Leu Gln Asn  
100 105 110

Lys

<210> SEQ ID NO 15  
<211> LENGTH: 118  
<212> TYPE: PRT  
<213> ORGANISM: Artificial Sequence  
<220> FEATURE:  
<223> OTHER INFORMATION: Synthetic: ColG3a

<400> SEQUENCE: 15

Pro Ile Thr Lys Glu Met Glu Pro Asn Asp Asp Ile Lys Glu Ala Asn

-continued

---

```

1           5           10           15
Gly Pro Ile Val Glu Gly Val Thr Val Lys Gly Asp Leu Asn Gly Ser
      20           25           30
Asp Asp Ala Asp Thr Phe Tyr Phe Asp Val Lys Glu Asp Gly Asp Val
      35           40           45
Thr Ile Glu Leu Pro Tyr Ser Gly Ser Ser Asn Phe Thr Trp Leu Val
      50           55           60
Tyr Lys Glu Gly Asp Asp Gln Asn His Ile Ala Ser Gly Ile Asp Lys
      65           70           75           80
Asn Asn Ser Lys Val Gly Thr Phe Lys Ser Thr Lys Gly Arg His Tyr
      85           90           95
Val Phe Ile Tyr Lys His Asp Ser Ala Ser Asn Ile Ser Tyr Ser Leu
      100          105          110
Asn Ile Lys Gly Leu Gly
      115

```

```

<210> SEQ ID NO 16
<211> LENGTH: 115
<212> TYPE: PRT
<213> ORGANISM: Artificial Sequence
<220> FEATURE:
<223> OTHER INFORMATION: Synthetic: ColA3b

```

```

<400> SEQUENCE: 16

```

```

Asn Glu Ser Glu Pro Asn Asn Asp Phe Glu Lys Ala Asn Gln Ile Ala
1           5           10           15
Lys Ser Asn Met Leu Val Lys Gly Thr Leu Ser Glu Glu Asp Tyr Ser
      20           25           30
Asp Lys Tyr Tyr Phe Asp Val Ala Lys Lys Gly Asn Val Lys Ile Thr
      35           40           45
Leu Asn Asn Leu Asn Ser Val Gly Ile Thr Trp Thr Leu Tyr Lys Glu
      50           55           60
Gly Asp Leu Asn Asn Tyr Val Leu Tyr Ala Thr Gly Asn Glu Gly Thr
      65           70           75           80
Val Leu Lys Gly Glu Lys Thr Leu Glu Pro Gly Arg Tyr Tyr Leu Ser
      85           90           95
Val Tyr Thr Tyr Asp Asn Gln Ser Gly Ala Tyr Thr Val Asn Val Lys
      100          105          110
Gly Asn Leu
      115

```

```

<210> SEQ ID NO 17
<211> LENGTH: 117
<212> TYPE: PRT
<213> ORGANISM: Artificial Sequence
<220> FEATURE:
<223> OTHER INFORMATION: Synthetic: ColH

```

```

<400> SEQUENCE: 17

```

```

Pro Ile Gly Thr Glu Lys Glu Pro Asn Asn Ser Lys Glu Thr Ala Ser
1           5           10           15
Gly Pro Ile Val Pro Gly Ile Pro Val Ser Gly Thr Ile Glu Asn Thr
      20           25           30
Ser Asp Gln Asp Tyr Phe Tyr Phe Asp Val Ile Thr Pro Gly Glu Val
      35           40           45
Lys Ile Asp Ile Asn Lys Leu Gly Tyr Gly Gly Ala Thr Trp Val Val
      50           55           60

```

-continued

---

Tyr Asp Glu Asn Asn Asn Ala Val Ser Tyr Ala Thr Asp Asp Gly Gln  
 65 70 75 80

Asn Leu Ser Gly Lys Phe Lys Ala Asp Lys Pro Gly Arg Tyr Tyr Ile  
 85 90 95

His Leu Tyr Met Phe Asn Gly Ser Tyr Met Pro Tyr Arg Ile Asn Ile  
 100 105 110

Glu Ser Val Gly Arg  
 115

---

We claim:

1. A composition comprising:  
 a collagen-binding polypeptide segment covalently linked to a PTH/PTHrP receptor agonist;  
 wherein the collagen-binding polypeptide segment is a bacterial collagen binding polypeptide segment, wherein the PTH/PTHrP receptor agonist comprises residues 1-14 of SEQ ID NO: 1, and wherein the collagen-binding polypeptide segment comprises a polypeptide fragment consisting of at least 10 consecutive amino acids of residues 38-158 of SEQ ID NO: 1.
2. The composition of claim 1, wherein the collagen-binding polypeptide segment and the PTH/PTHrP receptor agonist are chemically cross-linked to each other or are polypeptide portions of a fusion protein.
3. The composition of claim 1, wherein the composition has at least 50% greater activity than PTH(1-34) as measured by increased bone mineral density after eight weeks of weekly administration of the composition to a subject in need thereof at equal molar doses of the PTH.
4. The composition of claim 1, wherein the PTH/PTHrP receptor agonist is a polypeptide and the N-terminus of the collagen-binding polypeptide segment is linked directly or through a linker polypeptide segment to the C-terminus of the PTH/PTHrP receptor agonist polypeptide.
5. The composition of claim 1, wherein the PTH/PTHrP receptor agonist comprises residues 1-33 of SEQ ID NO: 1, SEQ ID NO: 7, or residues 1-34 of SEQ ID NO: 7.

6. The composition of claim 1, wherein the composition further comprises residues 37-130 of SEQ ID NO: 2 covalently linked to the collagen-binding polypeptide segment and the PTH/PTHrP receptor agonist.
7. A method of treating a medical condition comprising administering an effective amount of the composition of claim 1 to a mammal in need of treatment for the medical condition, wherein the medical condition is selected from the group consisting of promoting bone growth, promoting hair growth, promoting tissue growth, promoting immune reconstitution, promoting bone marrow stem cell mobilization and treating myocardial infarction.
8. The method of claim 7, wherein administering the composition to the mammal increases trabecular bone mineral density or cortical bone mineral density or trabecular bone mineral volume or cortical bone mineral volume.
9. The method of claim 7, wherein the composition is administered before, during or after administration of an implant or in combination with an implant.
10. The method of claim 7, wherein the implant is a dental implant or a bone graft.
11. The method of claim 7, wherein the implant comprises intact bone, bone cement, hydroxyapatite, demineralized bone, osteoblasts or combinations thereof.
12. The method of claim 7, wherein the composition is administered by injection.
13. The method of claim 7, wherein the composition is administered in aqueous solution at pH below about 5.0.

\* \* \* \* \*