



OPEN

Integrating metabolomics and targeted gene expression to uncover potential biomarkers of fungal/oomycetes-associated disease susceptibility in grapevine

Marisa Maia^{1,2}, António E. N. Ferreira¹, Rui Nascimento², Filipa Monteiro^{3,4}, Francisco Traquete¹, Ana P. Marques¹, Jorge Cunha⁵, José E. Eiras-Dias⁵, Carlos Cordeiro¹, Andreia Figueiredo^{2,6}✉ & Marta Sousa Silva^{1,6}✉

Vitis vinifera, one of the most cultivated fruit crops, is susceptible to several diseases particularly caused by fungus and oomycete pathogens. In contrast, other *Vitis* species (American, Asian) display different degrees of tolerance/resistance to these pathogens, being widely used in breeding programs to introgress resistance traits in elite *V. vinifera* cultivars. Secondary metabolites are important players in plant defence responses. Therefore, the characterization of the metabolic profiles associated with disease resistance and susceptibility traits in grapevine is a promising approach to identify trait-related biomarkers. In this work, the leaf metabolic composition of eleven *Vitis* genotypes was analysed using an untargeted metabolomics approach. A total of 190 putative metabolites were found to discriminate resistant/partial resistant from susceptible genotypes. The biological relevance of discriminative compounds was assessed by pathway analysis. Several compounds were selected as promising biomarkers and the expression of genes coding for enzymes associated with their metabolic pathways was analysed. Reference genes for these grapevine genotypes were established for normalisation of candidate gene expression. The leucoanthocyanidin reductase 2 gene (*LAR2*) presented a significant increase of expression in susceptible genotypes, in accordance with catechin accumulation in this analysis group. Up to our knowledge this is the first time that metabolic constitutive biomarkers are proposed, opening new insights into plant selection on breeding programs.

Grapevine (*Vitis vinifera* L.) is one of the most cultivated fruit plants in the world, with an important economic impact in wine and table grape industries. Of the 80 known and globally distributed *Vitis* species^{1,2}, *Vitis vinifera* L. is the mostly used in viticulture. As a result of its easy cultivation, vineyards longevity and numerous applications, in 2018, the global surface area for grapevine production was 7.4 Mha¹. Grapevine cultivation requires preventive applications of agrochemicals to control several diseases, such as downy mildew [*Plasmopara viticola* (Berk. & Curt.) Berl. & de Toni] Beri, et de Toni], powdery mildew [(*Erysiphe necator* syn. *Uncinula necator* (Schweinf.) Burrill)], gray mold (*Botrytis cinerea* Pers.) and black rot (*Guignardia bidwellii* (Ellis) Viala & Ravaz),

¹Laboratório de FTICR e Espectrometria de Massa Estrutural, Departamento de Química e Bioquímica, Faculdade de Ciências, Universidade de Lisboa, Campo Grande, 1749-016 Lisbon, Portugal. ²Biosystems and Integrative Sciences Institute (BioISI), Faculdade de Ciências, Universidade de Lisboa, Campo Grande, 1749-016 Lisbon, Portugal. ³Centre for Ecology, Evolution and Environmental Changes (cE3c), Faculdade de Ciências, Universidade de Lisboa, Campo Grande, 1749-016 Lisbon, Portugal. ⁴Linking Landscape, Environment, Agriculture and Food (LEAF), Instituto Superior de Agronomia (ISA), Universidade de Lisboa, 1349-017 Lisbon, Portugal. ⁵Instituto Nacional de Investigação Agrária e Veterinária (INIAV), Quinta da Almoinha, 2565-191 Dois Portos, Portugal. ⁶These authors jointly supervised this work: Andreia Figueiredo and Marta Sousa Silva. ✉email: aafigueiredo@fc.ul.pt; mfsilva@fc.ul.pt

that affect all the green parts of the plant and grapes³. However, some chemical products are not entirely efficient, with major pathogen outbreaks being reported^{4,5}. Others are more efficient but have highly economic and environmental costs, besides the detrimental effects to human and animal health^{6,7}. Over the last decade, there has been an increasing demand for environmentally friendly agricultural practices. With the general recommendations of the European agricultural policy encouraging the reduction of pesticides towards environmental sustainability and consumer health improvement, alternatives are needed. One possible approach is the creation of more resistant grapevine varieties through cross-breeding programs between wild *Vitis* sp. (resistant) and *V. vinifera* (susceptible), combining resistant traits with highly desired and unique grape properties. Several crossing lines inbred with American *Vitis* species are currently commercialized as partially resistant varieties to fungal pathogens, e.g. Regent, Calardis Blanc, Solaris^{8,9}.

In breeding programs, the selection for pathogen resistance traits is only possible 2 to 3 years after plant crossing, after which the more resistant seedlings are kept^{10,11}. Considering the high number of newly developed seedlings, the establishment of new and advanced selection methods that can shorten this selection time and lead to a more efficient breeding process is a much-needed requirement. Grapevine genotypes possess distinct degrees of resistance to different fungal pathogens (<https://www.vivc.de/>)¹². Hence, the study of different grapevine genotypes metabolomes, without stress, will uncover the innate metabolic differences between them. The full comprehension of disease resistance or tolerance mechanisms allied with the discovery of fungal/oomycete pathogen resistance-associated biomarkers in grapevine, may allow a quick and accurate identification of the seedlings that inherited the resistant trait soon after germination.

Secondary metabolites have been proven to play an important role in grapevine defences against pathogens. Several studies have been published in pathogen infection conditions which has allowed the metabolite profiling of some grapevine-pathogen interactions through various analytical instruments. Some of these metabolites have been highlighted as possible biomarkers^{13–20}. For instance, the accumulation of inositol and caffeic acid are possibly related to the innate resistance^{13,20} and hexadecanoic and the monohydroxycarboxylic acids were associated to grapevine resistance¹⁸. Moreover, stilbenoids were already reported as key defense compounds involved in grapevine resistance to *Plasmopara viticola*, *Erysiphe necator* and *Botrytis cinerea*^{16,21}.

Metabolic biomarkers have proven their value to predict phenotypical traits before they are observed²². In this area, metabolomics is a powerful tool due to its ability to simultaneously characterize and quantify multiple metabolites^{23–25}. Due to its extreme resolution and ultra-high mass accuracy, Fourier Transform Ion Cyclotron Resonance mass spectrometry (FT-ICR-MS) is particularly powerful for an untargeted metabolome characterization, being successfully used in the study of grapevine chemical profile^{14,26–28}. Additionally, metabolomics can also be used to explore metabolic pathways, uncover key enzymes involved in the biosynthesis/catalysis of metabolites and therefore genes associated with a wide range of responses. Metabolomics together with metabolic quantitative trait loci (mQTL) mapping, are being used as tools for assisting crops' improvement, representing a breakthrough advance for the selection of offsprings with relevant traits and identification of trait-associated metabolic biomarkers²³. This approach has been applied to potato, rice, maize and tomato^{29–33}.

The present work aimed at identifying susceptibility and resistance/tolerance biomarkers through a combined approach based on untargeted metabolite profiling and targeted gene expression analysis. Eleven field grown *Vitis* genotypes (5 *Vitis* species and 6 *Vitis vinifera*) with different resistance levels to fungal/oomycete pathogens were analysed. After an untargeted metabolomics analysis by FT-ICR-MS, the most relevant metabolites discriminating susceptible and resistant/partial resistant genotypes were mapped for pathway analysis, allowing the selection of genes coding for pathway key enzymes. A targeted gene expression analysis was performed, preceded by reference gene establishment for this sample set. One candidate was identified as a possible susceptibility-associated biomarker.

Results

Metabolic differentiation of susceptible and resistant/partial resistant *Vitis*. Eleven *Vitis* genotypes with different tolerance to pathogens were analysed. *Vitis* species *V. labrusca*, *V. rotundifolia*, *V. riparia*, and *V. candicans* present a higher resistance/tolerance to both downy and powdery mildews and gray mold (Table 1). An untargeted metabolomics analysis using FT-ICR-MS, by direct infusion and using electrospray ionization in positive (ESI⁺) and negative (ESI⁻) ionization modes was followed. Two unsupervised approaches, principal component analysis (PCA) and hierarchical clustering, were applied to the untargeted metabolomics data to verify the analytical reproducibility and to infer inter-genotype metabolic profile similarities among the various *Vitis* samples (Fig. 1). Data reproducibility, as seen from the clustering of replicates together, was very high, indicating that metabolome profiling of *Vitis* leaves appears to be sufficiently sensitive to distinguish the different species and cultivars. Also, in both ionization modes, a trend of separation between wild *Vitis* and *V. vinifera* cultivars can be observed in the PCA score plots (Fig. 1a,b). The dendrograms resulting from hierarchical clustering confirm this trend, since two major clusters were formed with these two sample groups (Fig. 1c,d). The only exception to this overall trend is *V. rupestris*. It is also apparent that the metabolome profile variation among *V. vinifera* cultivars seems to be larger than variation among wild species' samples (Fig. 1a,b). The general trend of separation suggests that the multivariate metabolic phenotypes might be enough to discriminate and predict resistance or susceptibility characteristics. For that purpose, we used our metabolomics data to build classifiers for predicting the resistance or susceptibility of *Vitis* plants from their leaf metabolic profiles. We fitted Orthogonal Partial Least Squares Discriminant Analysis (OPLS-DA) models on MS intensity data using as target the inclusion on either the resistant/partial resistant group, defined by all the wild species and cultivar 'Regent', or the susceptible group, defined by all the remaining *V. vinifera* cultivars. Separation classifiers were built for either ESI⁺ or ESI⁻ data. Both classifiers showed very good performance. Score plots indicate that the predictor component was able to discriminate between the two groups (Fig. 2a,b) in both classifiers. Estimating model

Vitis species	Subspecies (subsp.) or cultivar (cv.)	VIVC variety number	Abbreviation	Type of accession	Origin	Degree of resistance according to OIV descriptor 452			Overall response to fungi/oomycete pathogens
						Plasmopara viticola	Erysiphe necator	Botrytis cinerea	
<i>V. labrusca</i>	Isabella	5560	LAB	Wild species	United States of America	7	9	Unknown	PR/R
<i>V. rotundifolia</i>	Muscadinia Rotundifolia Michaux cv. Rotundifolia	13586	ROT	Wild species	United States of America	9	9	Unknown	PR/R
<i>V. riparia</i> Michaux	Riparia Gloire de Montpellier	4824	RIP	Wild species	United States of America	9	9	Unknown	PR/R
<i>V. candicans</i> Engelmann	Vitis Candicans Engelmann	13508	CAN	Wild species	United States of America	7	9	Unknown	PR/R
<i>V. rupestris</i> Scheele	Rupestris du lot	10389	RU	Wild species	United States of America	7	7	9	PR/R
<i>V. vinifera</i>	Subsp. <i>sylvestris</i>		SYL	Wild plant	Portugal	3	3	5	PR/R
	Subsp. <i>sativa</i> cv. Regent	4572	REG	Cultivated hybrid (crossing <i>V. vinifera</i> cv. Diana X cv. Chambourcin)	Germany	7	9	Unknown	PR/R
	Subsp. <i>sativa</i> cv. Riesling Weiss	10077	RL	Cultivated grapevine	Germany	3	3	1/3	S
	Subsp. <i>sativa</i> cv. Pinot Noir	9279	PN	Cultivated grapevine	France	3	3	1/3	S
	Subsp. <i>sativa</i> cv. Cabernet Sauvignon	1929	CS	Cultivated grapevine	France	1/3	1/3	5	S
	Subsp. <i>sativa</i> cv. Trincadeira	15685	TRI	Cultivated grapevine	Portugal	1/3	1/3	1/3	S

Table 1. Wild *Vitis* species, *V. vinifera* subsp. *sylvestris* and grapevine cultivars analysed. Species and cultivar names, type of accession, origin and response to fungi pathogens are indicated (information adapted from⁴⁷ and <https://www.vivc.de/>). Classification of resistance: 1—very low; 3—low, 5—medium, 7—high, 9—very high or total. PR—Partial resistant; R—Resistant; S—Susceptible.

performance with sevenfold stratified cross-validation, the overall accuracy was greater than 0.98 and both R^2_Y and Q^2_Y metrics achieve top values with only a few orthogonal components (see Supplementary Figure F1a,b online). Furthermore, by assessing the significance of the models by permutation tests, the accuracy of permuted target label models, estimated by sevenfold stratified cross-validation has a distribution well below the reference accuracy of the non-permuted models which correspond, in both classifiers, to p -values of 0.001 (Fig. 2c,d).

Univariate analysis based on the variable intensity changes between resistant/partial resistant and susceptible groups allowed the identification of several spectral features with both significant and large variation between the two groups. Even at a significance level of 0.01 for FDR-corrected p -values, we found 2535 features with $|\log_2 FC| \geq 1$, 1796 in ESI⁺ and 739 in ESI⁻. A search of these features in MassTRIX³⁴ provided a putative identification of some of these peaks. A total of 190 unique masses with significant and large variation between our comparison groups were putatively annotated (see Supplementary Table S1 online).

To understand the biological relevance of these discriminatory compounds in grapevine metabolism, the compounds with KEGG (Kyoto Encyclopaedia of Genes and Genomes) identifiers for database annotation were retrieved and mapped into selected pathogen defence related KEGG pathways using the R package Pathview (Fig. 3). Pathway analysis of flavonoid biosynthesis and flavone and flavonol biosynthesis, mapped 17 and 10 metabolites, respectively (Fig. 3). Among the discriminatory putatively identified metabolites, we highlight catechin or epicatechin, leucocyanidin, caffeic acid, hexadecanoic acid derivatives and dodecanoic acid as more abundant in the susceptible *V. vinifera* cultivars. Quercetin 3-O-glucoside (isoquercitrin) and dihydroquercetin, together with several other flavonol 3-O-glucosides, more abundant in the resistant/partial resistant plants (see Supplementary Table S1 online).

Reference gene selection, stability determination and expression analysis. As no reference genes were previously described for non-stressed grapevine genotypes, we selected ten candidate reference genes (RGs) based on their previous description as good qPCR control genes for *Arabidopsis thaliana*³⁵ and grapevine^{36–38}. Nine of the selected genes were formerly described as RGs for grapevine: 60S ribosomal protein L18 (60S), tetratricopeptide repeat protein 7B (*TTC7B*), elongation factor 1- α (*EF1 α*), ubiquitin-conjugating enzyme (*UBQ*), SAND family protein (*SAND*), glyceraldehyde-3-phosphate dehydrogenase (*GAPDH*), α -tubulin 3-chain (α -*TUB*), β -tubulin 1-chain (β -*TUB*) and actin (*ACT*). Adaptor protein-2 MU-adaptin (*AP2M*) was previously described for *Arabidopsis*³⁵ and sequence for its homologue in grapevine was retrieved from NCBI (<https://www.ncbi.nlm.nih.gov/>) (Table 2).

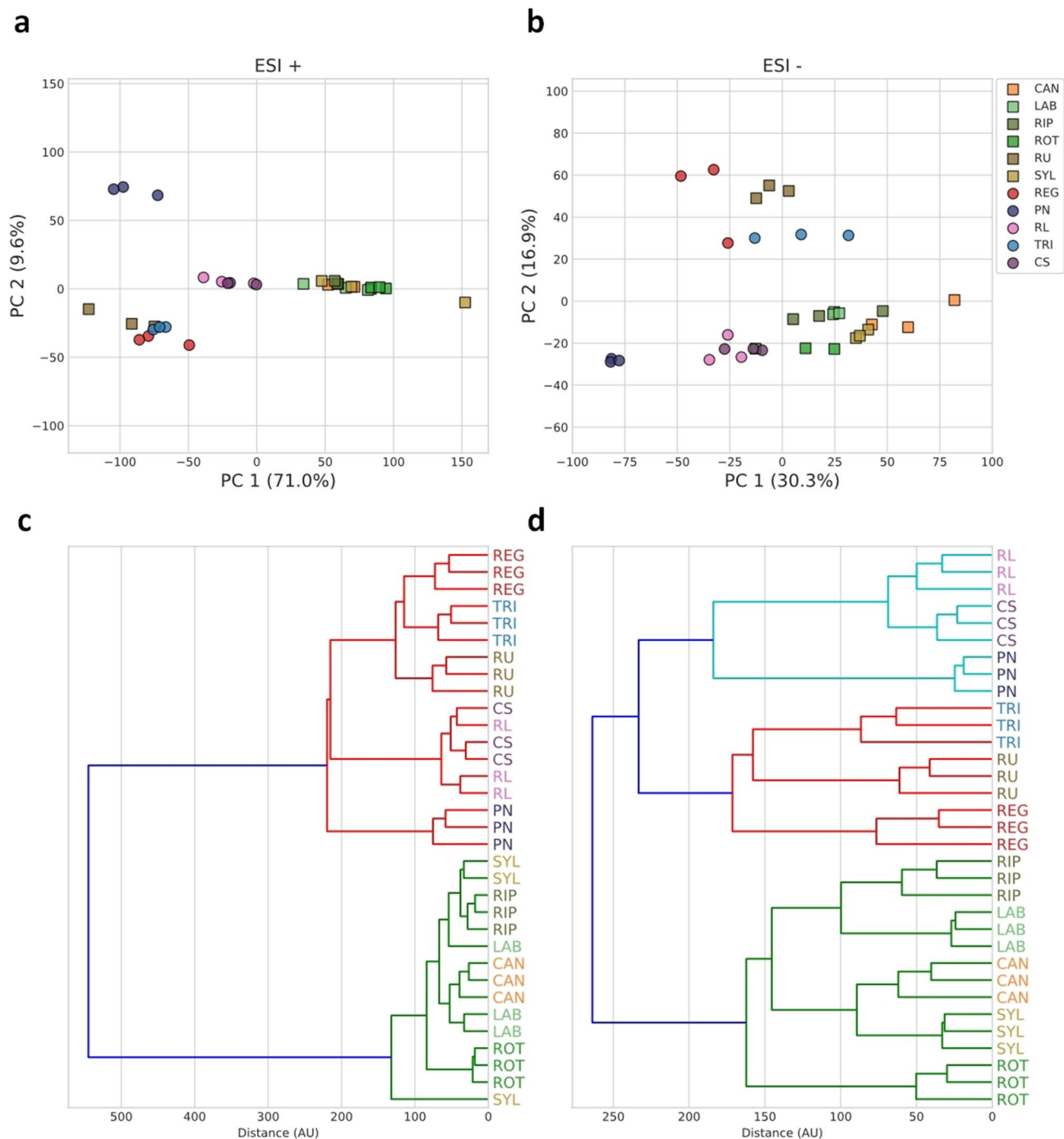


Figure 1. Principal component analysis (PCA) and hierarchical clustering analysis (HCA) of untargeted metabolomics obtained in positive (ESI⁺) and negative (ESI⁻) ionization modes. **(a,b)** PCA score plots. Squares represent wild *Vitis*, while circles represent domesticated *V. vinifera*; **(c,d)** HCA dendrograms. *Vitis* genotypes abbreviations are indicated in Table 1. Variance explained by each principal component is indicated in parenthesis.

Expression stability of the candidate RGs was evaluated by three statistical algorithms, GeNorm, Normfinder and Bestkeeper, and a final rank was established with the RefFinder tool^{39,40}. Ranking order of the most stable to the least stable genes is presented in Table 3. In all the *Vitis* species and *V. vinifera* cultivars analysed, genes encoding for UBQ and SAND were ranked as the most stable genes presenting the lowest M value ($M = 0.859$), followed by *GAPDH* ($M = 0.990$) and *EF1 α* ($M = 1.027$). For all *Vitis* samples analysed, *UBQ* was considered as the most stable gene with an expression stability value (SV) of 0.552 (Table 3), followed by *AP2M* (SV = 0.744), *GAPDH* (SV = 0.745) and β -*TUB* (SV = 0.766).

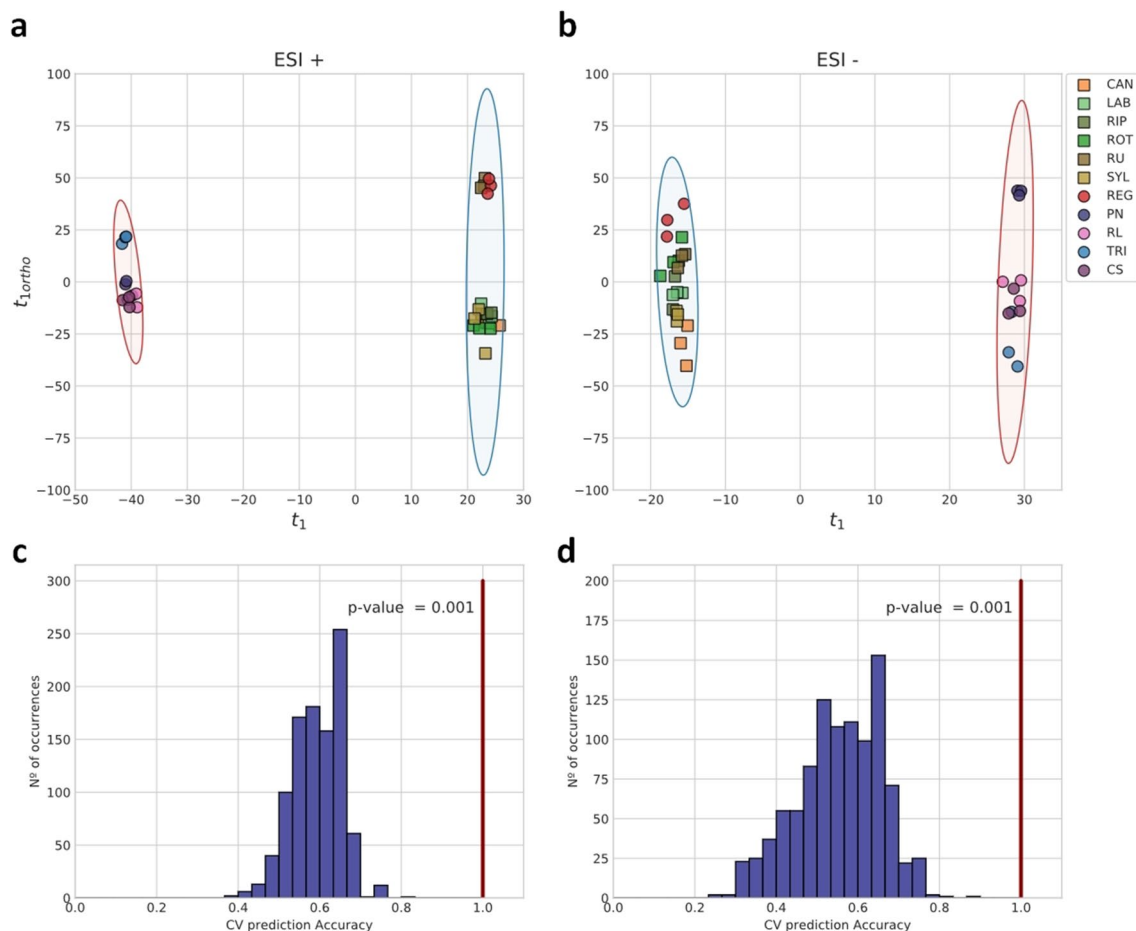


Figure 2. Orthogonal partial least squares discriminant analysis (PLS-DA) models for the classification into resistant/partial resistant and susceptible groups using of untargeted metabolomics data obtained in positive (ESI⁺) and negative (ESI⁻) ion modes. **(a,b)** Score plots for the predictive and first orthogonal components. Squares represent wild *Vitis*, while circles represent domesticated *V. vinifera*. Confidence ellipses are drawn for the two classification groups: resistant/partial resistant (blue) and susceptible (red); **(c,d)** Significance diagnostic showing the distribution of predictive accuracy in permutation tests and the p-value of the test for accuracy. 1000 permutations were randomly sampled. Vertical lines indicate the accuracy of model with labels non-permuted. Accuracy was estimated by sevenfold stratified cross-validation. *Vitis* genotypes abbreviations are indicated in Table 1.

In this study, BestKeeper analysis considered α -TUB and SAND as the most stable genes for all *Vitis* samples, with standard deviation (SD) values of 0.92 and 1.01, respectively (Table 3). 60S (SD = 1.07) was the third and EF1 α (SD = 1.09) was the fourth most stable genes.

Considering the 3 algorithms, a final rank was established by RefFinder³². The results revealed that, in grapevine leaves, the four most stable genes for normalization were *UBQ*, *SAND*, *EF1 α* and *AP2M* (Table 3).

Based on the putatively identified metabolites, respective metabolic pathways and the existing knowledge regarding markers for pathogen resistance/susceptibility in grapevine, several genes coding for enzymes in the biosynthesis or catabolism of the most discriminating metabolites were selected, namely: quercetin 3-O-glucoside (isoquercitrin), dihydroquercetin, caffeic acid, leucocyanidin, dodecanoic acid, hexadecanoic acid, catechin, epicatechin and myo-inositol.

A total of 7 genes were selected for expression analysis, coding for the following enzymes: caffeic acid O-methyltransferase (*COMT*), catalyses the conversion of caffeic acid to ferulic acid; leucoanthocyanidin reductase 2 (*LAR2*), catalyses the synthesis of catechin from leucocyanidin; anthocyanidin reductase (*ANR*), responsible for the synthesis of epicatechin from cyanidin; fatty acyl-ACP thioesterase B (*FatB*), responsible for the synthesis of hexadecanoic acid from hexadecanoyl-ACP and of dodecanoic acid from dodecanoyl-ACP; myo-inositol monophosphatase (*IMPL1*), catalyses the hydrolysis of myo-inositol phosphate into myo-inositol and phosphate; flavonoid 3',5'-hydroxylase (*F3'5'H*), involved in several reactions in the flavonoid biosynthesis pathway; and UDP-glucose:flavonoid 3-O-glucosyltransferase (*UFGT*), catalyses the formation of flavonol 3-O-glucosides, using UDP-glucose as sugar donor (Table 4). The quantification cycle (Cq) value of the genes of interest in all *Vitis* genotypes were extracted and normalized by the geometric mean of the quantification cycles of *UBQ*, *SAND* and *EF1 α* , for data normalization. For each gene, Bartlett's test was used to access homoscedasticity of our samples and the non-parametric Wilcoxon-Mann-Whitney U test was performed, identifying the discriminating genes

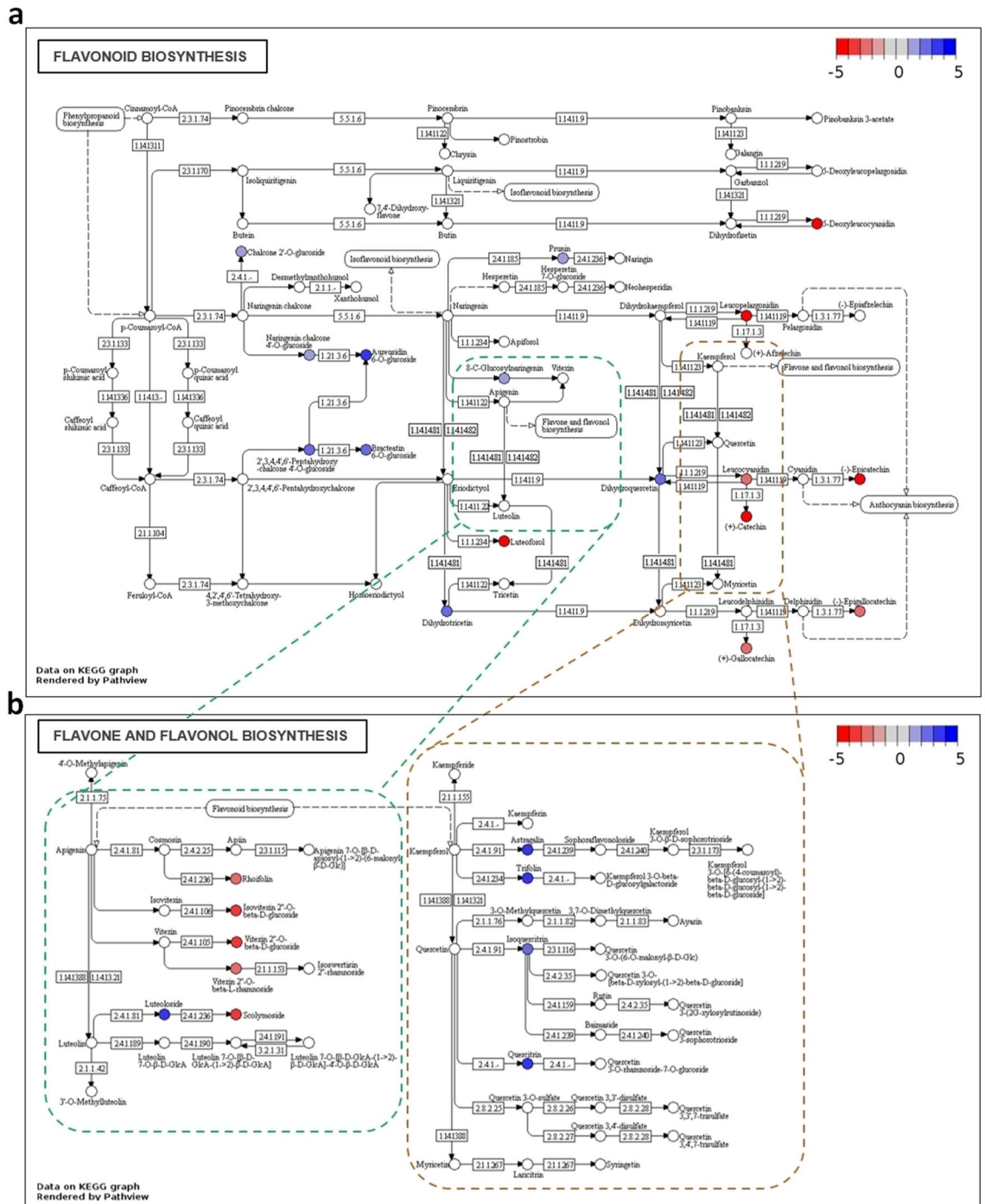


Figure 3. Flavonoid (a) and Flavone and flavonol (b) biosynthesis pathways from *V. vinifera* showing the discriminatory putative metabolites between resistant/partial resistant and susceptible groups (FDR corrected p -value < 0.01). Metabolite's KEGG identifiers were used in the R package Pathview, coloured in agreement with their $|\log_2(FC)|$ values, between resistant/partial resistant and susceptible plants: more accumulated in the resistance/tolerance group are blue, more accumulated in the susceptibility group are red and those unchanged are grey, setting the limits between - 5 and 5.

between our comparison groups. Only genes considered statistically significant in both tests (p -value < 0.05) were considered to be possible and reliable genetic biomarker (see Supplementary Table S2 online). *ANR*, *UFGT*, *F3'5'H* and *FatB* genes were, therefore, excluded (Fig. 4). On the other hand, *COMT*, *LAR2* and *IMPL1* are clearly significantly different between susceptible and resistant/partial resistant groups, presenting lower Cq values on the susceptible groups (higher expression), (see Supplementary Table S2 online). Among these, the gene with most significance when its level is compared between groups is *LAR2* (Fig. 4, see Supplementary Table S2 online),

Gene (NCBI accession number)	Primer sequence	Amplicon length (bp)	Ta (°C)	Tm (°C)
<i>60S</i> (XM_002270599.3)	Fw: ATCTACCTCAAGCTCCTAGTC Rev: CAATCTTGTCTCCTTTCCT	165	60	79.6
<i>TTC7B</i> (XM_002283371.4)	Fw: GCTCTGTTGTTGAAGATGGG Rev: GGAAGCAGTTTGTAGCATCAG	156	60	79.9
<i>EF1α</i> (XM_002284888.3)	Fw: GAACTGGGTGCTTGATAGGC Rev: ACCAAAATATCCGGAGTAAAAGA	164	60	79.7
<i>UBQ</i> (XR_002030722.1)	Fw: GCCCTGCACTTACCATTCTTAAAG Rev: GAGGGTCGTCAGGATTGGA	75	60	78.9
<i>SAND</i> (XM_002285134.3)	Fw: CAACATCCTTTACCCATTGACAGA Rev: GCATTTGATCCACTTGCAGATAAG	76	60	79.2
<i>GAPDH</i> (XM_002263109.3)	Fw: TCAAGGTCAAGGACTCTAACACC Rev: CCAACAACGAACATAGGAGCA	226	60	81.3
<i>ACTIN^a</i> (XM_019223591.1)	Fw: ATTCCTCACCATCATCAGCA Rev: GACCCCTCCTACTAAAAC	89	55	77.5
<i>α-TUB</i> (XM_002285685.4)	Fw: CAGCCAGATCTTCACGAGCTT Rev: GTTCTCGCGCATTGACCATA	119	60	78.8
<i>AP2M</i> (XM_002281261.3)	Fw: CCTCTCTGGAATGCCTGATTT Rev: CTTTAGCAGGACGGGATTTA	89	55	75.0
<i>β-TUB</i> (XM_002275270.3)	Fw: TGAACCACTTGATCTCTGCGACTA Rev: CAGCTTGCGGAGGTCTGAGT	86	60	82.3

Table 2. Candidate reference genes for qPCR. Genes, gene accession numbers, primer sequences (Fw, forward; Rev, reverse), amplicon length (bp, base pairs) and qPCR annealing (Ta) and melting (Tm) temperatures are indicated. ^aAlternative splicing variant.

Reference gene	GeNorm	NormFinder	BestKeeper		Ranking mean	Final ranking
	M value	SV	SD	r		
<i>UBQ</i>	0.859 (1)	0.552 (1)	1.13 (5)	0.90*	2.33	1
<i>SAND</i>	0.859 (1)	0.791 (6)	1.01 (2)	0.81*	3.00	2
<i>EF1α</i>	1.027 (3)	0.767 (5)	1.09 (4)	0.85*	4.33	3
<i>AP2M</i>	1.105 (4)	0.744 (2)	1.20 (6)	0.86*	4.33	3
<i>GADPH</i>	0.990 (2)	0.745 (3)	1.31 (8)	0.90*	4.67	4
<i>α-TUB</i>	1.181 (6)	1.122 (7)	0.92 (1)	0.59*	5.00	5
<i>β-TUB</i>	1.132 (5)	0.766 (4)	1.21 (7)	0.84*	5.67	6
<i>60S</i>	1.245 (7)	1.287 (8)	1.07 (3)	0.63*	6.33	7
<i>ACT</i>	1.439 (8)	2.056 (10)	1.63 (9)	0.69*	9.33	8
<i>TTC7B</i>	1.602 (9)	1.972 (9)	1.98 (10)	0.78*	10.00	9

Table 3. Candidate reference genes ranking for all *Vitis* samples calculated by GeNorm, NormFinder and BestKeeper. Genes are ordered by the final ranking. SV, Stability value; SD, Standard deviation of Cq value; r, Pearson coefficient of correlation; * $p \leq 0.01$. p-value associated with the Pearson coefficient of correlation; Ranking order is indicated in parenthesis.

which encodes for the enzyme leucoanthocyanidin reductase 2, responsible for the synthesis of catechin from leucocyanidin and has a higher expression in the group of susceptible plants.

Discussion

Grapevine is affected by diverse pathogens, particularly fungi and oomycetes, which, if not controlled, can affect the entire vineyard and cause a drastically reduction of the production, berry quality and yield. Downy and powdery mildews, black rot and gray mold gained the European Union's attention and were recently flagged as the grapevine diseases with higher impact in Europe³. European Union is committed to “increase resilience of grape vines to pests and diseases and support the productivity of the sector in sustainable ways”, focusing on the breeding of new resistant varieties that maintain the grape qualities for wine production³. Its success depends on the understanding of the innate resistance mechanisms against pathogens and the identification of resistance/susceptibility-related biomarkers towards the development of assays to assist future breeding programs and introgression line analysis. The development of new crossing hybrids by the combination of wild American and Asian *Vitis*, that present innate resistance towards different pathogens⁴¹, with *V. vinifera* (susceptible) offer a promising alternative to the use of pesticides and contribute to an environmentally sustainable viticulture. *Vitis riparia* and *V. labrusca*, analysed in our study, exhibit resistant traits to *P. viticola*⁴¹ (<https://www.vivc.de/>) and have been effectively used in for resistance introgression. A successful hybrid example is *V. vinifera* ‘Regent’, with

Metabolites	Enzyme	Abbreviation	EC number	Gene NCBI accession number	Primer sequence	Amplicon length (bp)	Ta (°C)	Tm (°C)	Amplification efficiency
Caffeic acid	Caffeic acid 3-O-methyltransferase	COMT	EC 2.1.1.68	XM_003634113.2	Fw: GTATGA CCCCAACAA CTATC Rev: GACCAT GGGGAGAAC TGA	88	60	78.4	1.88 ± 0.02
Catechin	Leucoanthocyanidin reductase 2	LAR2	EC 1.17.1.3	NM_001281160.1	Fw: TGTAAC CGTGGGAAGA AGATGA Rev: ATGAAG ATGTCGTGA GTGAAG	92	60	80.6	1.88 ± 0.02
Epicatechin	Anthocyanidin reductase	ANR	EC 1.3.1.77	NM_001280956.1	Fw: ATCAAG CCAGCAATT CAAGGA Rev: CAGCTG CAGAGGATG TCAA	93	60	76.2	1.88 ± 0.006
Dodecanoic acid/hexadecanoic acid	Palmitoyl-acyl carrier protein thioesterase B	FatB	EC 3.1.2.21/3.1.2.14	XM_019223124.1	Fw: TCGCAA ACCCTAGAA ACCAAT Rev: AATGAG GGAAGGAGG AAAATG	112	60	77.5	1.93 ± 0.05
Myo inositol	Myo-inositol monophosphatase ^a	IMPL1	EC 3.1.3.25	XM_002276661.3	Fw: ATCCCA AACGCTACC CAAAAA Rev: TAACAG CTTCCATCA CAACCT	119	60	80.9	1.96 ± 0.02
Quercetin/dihydroquercetin	Flavonoid 3',5'-hydroxylase ^b	F3'5'H	EC 1.14.14.81	XM_003632164.3	Fw: GTGGTG CCGGAGATG TTA Rev: TGCGAT GGACGGAAT AAAAT	173	56	80.1	1.83 ± 0.05
Quercetin-3-O-glucoside (Isoquercitrin)	UDP-glucose:flavonoid 3-O-glucosyltransferase	UFGT	EC 2.4.1.91	AF000372.1	Fw: AGGGGA TGTTAATGG CTGT Rev: ATGGGT GGAGAGTGA GTTAG	151	60	84.7	1.97 ± 0.01

Table 4. Genes of interest and their encoding enzymes selected for gene expression analysis. EC numbers, gene accession numbers, primer sequences (Fw, forward; Rev, reverse), amplicon length, qPCR annealing (Ta) and melting (Tm) temperatures and amplification efficiency are indicated. ^aAlternative splicing variants. ^bAlternative locus variants.

a broad partial resistance to the most significant pathogens (information from <https://www.vivc.de/>). In breeding programs, the expression of the resistant trait takes too long to be observable in the progeny. The identification of metabolic biomarkers may allow a fast and accurate identification of the seedlings that inherited the resistant traits soon after germination.

The comparison of different *Vitis* metabolomes, without being submitted to any stress, will allow the detection of relevant metabolic variations between grapevine genotypes and uncover potentially innate defence compounds that could be used as biomarkers in breeding-programs.

For that purpose, we have conducted an untargeted metabolome characterization of eleven *Vitis* genotypes presenting different levels of resistance to downy and powdery mildews and black rot. *Vitis vinifera* cultivars Pinot noir, Riesling, Trincadeira and Cabernet sauvignon are susceptible, whereas the inter-specific hybrid *V. vinifera* Regent (that combines both *Vitis vinifera* and American *Vitis* genetic background) and the *V. vinifera* subspecies *sylvestris* present a higher tolerance towards these pathogens, when compared to the other genotypes.

From our untargeted metabolomics data, two groups, *V. vinifera* cultivars and wild *Vitis*, were immediately defined and separated based on their metabolic profile. *Vitis rupestris* appears to be an exception to this overall separation trend. However, the metabolic profile of this wild *Vitis* is closer to the interspecific hybrid 'Regent' and cultivar 'Trincadeira'. 'Regent' is considered partially resistant to downy and powdery mildews, harbouring one RPV and two REN loci⁸ (<https://www.vivc.de/>). On 'Regent' pedigree, backcrosses were made with *V. vinifera*, thus, it is expected that its metabolic profile clusters together with *V. vinifera* genotypes. Concerning the metabolome variation, it was observed to be larger in *V. vinifera* cultivars. This difference was somewhat expected, considering that domesticated grapevine cultivars present a genetic background tailored according to

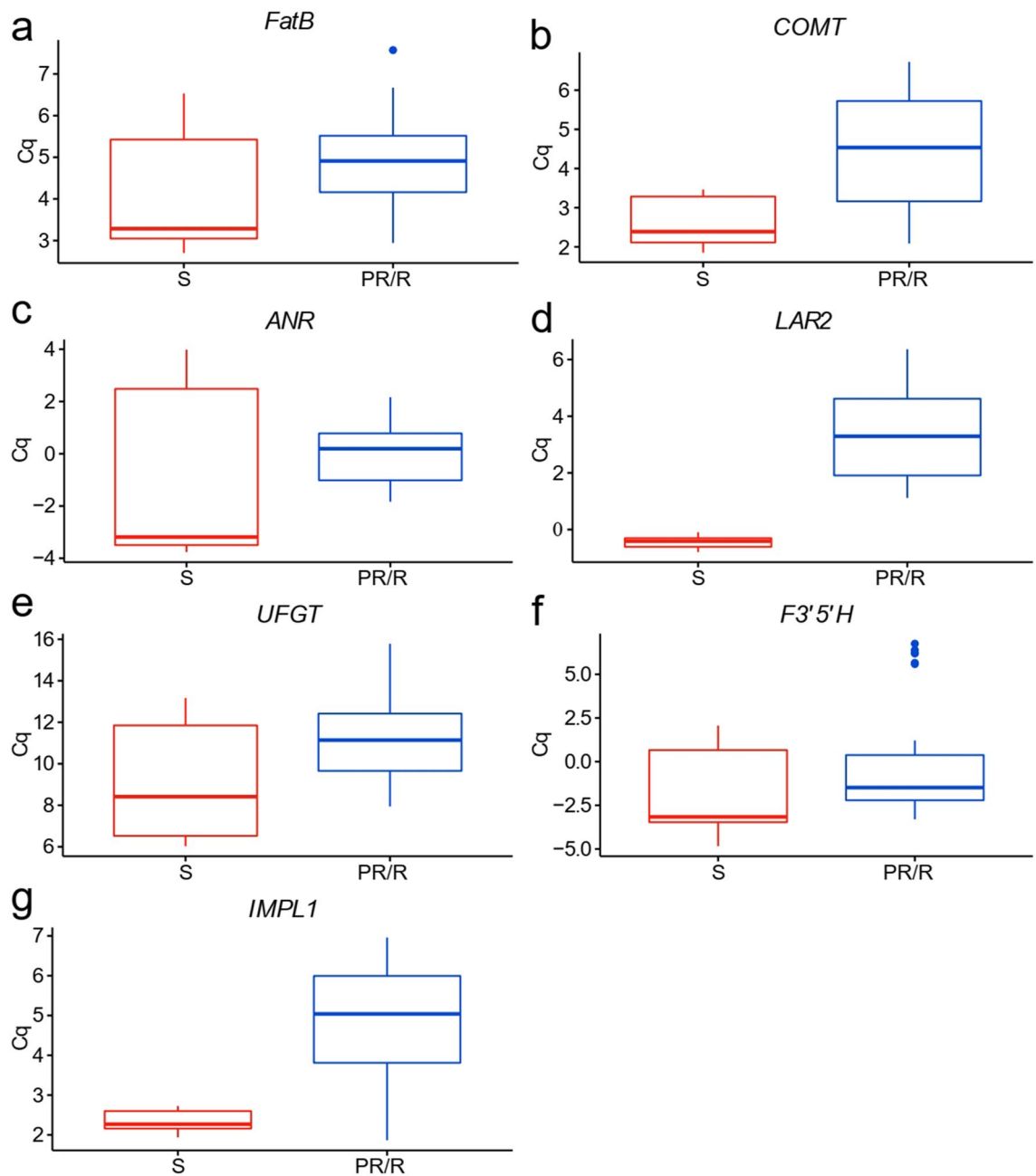


Figure 4. Boxplot of quantification cycles (Cq) values for the different genes of interest in susceptible (S) and partial resistant/resistant (PR/R) genotypes. (a) *FatB*, (b) *COMT*, (c) *ANR*, (d) *LAR2*, (e) *UFGT*, (f) *F3'5'H*, (g) *IMPL1* (gene names are indicated in Table 4). Cq values were normalized by the geometric mean of the Cq of *UBQ*, *SAND* and *EF1 α* . Data for susceptible plants are represented in red and data for resistant/partial resistant are in blue.

breeders most wanted characteristics, as the result of gene transfer during multiple crossings and selection^{42,43}. For the wild species, no agronomic selection events have been pursued and thus they maintain a closer metabolic profile background.

Overall, our data predictor component was capable of discriminate between susceptible and resistant/partial resistant grapevine groups. The performance of these predictors is very encouraging in the context of sustainable agricultural practices. The prediction of resistance or susceptibility from plant leaf extracts using extreme-resolution metabolic profiling has the potential to analyse and then select crossed plants in still early development stages of their development, prior to infection, decreasing preventive pesticide use.

For the discriminant analysis, a resistant/partial resistant and susceptible group were considered, and 190 metabolites allowed the discrimination between them.

Of those, caffeic acid, catechin, epicatechin, leucocyanidin, quercetin-3-O-glucoside and derivatives, and dihydroquercetin, were found to have significant differences between the two groups. Dodecanoic acid and

hexadecanoic and myo-inositol derivatives were also found to be discriminative. Some of the identified compounds were already reported as important in grapevine innate resistance^{18–20} and others as possible infection-associated resistance/partial resistance biomarkers^{17,21,44–46}. In 2008, Figueiredo and co-workers, compared the metabolic profiles of a tolerant and a susceptible grapevine cultivar²⁰. The accumulation of some metabolites, such as inositol and caffeic acid, was observed and a possible relation to innate resistance towards downy mildew was suggested. Also, the analysis of the leaf surface compounds from different cultivars, displaying different degrees of resistance and susceptibility to *P. viticola*, was reported by Batovska and co-workers¹⁸. In this study, 10 metabolites were highlighted as possible biomarkers for the prediction of downy mildew resistance and susceptibility, in which hexadecanoic acid was related to resistance in grapevine.

Some compounds were also marked as discriminatory between *Vitis* genotypes and linked to higher resistance/susceptibility to pathogens^{14,15,17}. In a time-course infection assay of grapevine leaves with downy mildew, different metabolites between inoculated and control samples were identified¹⁷. Within these metabolites we can highlight quercetin-3-o-glucoside, myo-inositol and hexadecanoic acid, also detected in our study. Moreover, recently, Nascimento and co-workers have identified several metabolic classes, such as flavonoids, associated to grapevine defenses against downy mildew¹⁴. Although stilbenoids are well known plant-derived defense compounds^{16,21}, no difference in resistant/partial resistant and susceptible *Vitis* genotypes was observed at the constitutive level, which is not unexpected as stilbenoids mainly occur as phytoalexins, that are produced dynamically in response to biotic or abiotic stress^{21,47,48}.

Discriminative compounds between resistant/partial resistant and susceptible *Vitis* genotypes, with KEGG ID were mapped into biochemical pathways, revealing an enrichment in the flavonoid biosynthesis pathway, already described as involved in pathogen response^{49,50}. These results are in line with previous studies where phenolic compounds were proven to play an important role in biotic and abiotic stress resistance^{51–53}. Some of these discriminative compounds, that are end products of these pathways, were selected and genes coding for enzymes involved in their metabolic reactions were chosen, particularly from quercetin derivatives, caffeic acid, catechin/epicatechin metabolism, myo-inositol and dodecanoic acid were selected. The expression of these genes was analysed to assess their changes in resistant/partial resistant and susceptible plants.

Reference genes for our experimental conditions were defined and candidate gene expression was assessed. Three of the selected genes, *COMT*, *LAR2* and *IMPL1* allowed the discrimination between the susceptible and resistant/partial resistant groups. Albeit all these genes showed expression differences between susceptible and resistant/partial resistant *Vitis*, *LAR2* (catechin biosynthesis pathway) seems to present a higher discriminative potential. In fact, recent functional genomic studies in grapevine LAR enzymes confirmed that *LAR2* is involved in the conversion of leucocyanidin into (+)-catechin and (–)-epicatechin⁵⁴. Moreover, catechin is a naturally occurring flavonol with high antioxidant properties. It has been previously identified as being involved in grapevine defence mechanisms⁴⁴. Also, catechin together with other phenolic compounds, were shown to inhibit the activity of enzymes that are essential for fungal propagation and sporulation of different fungi isolated from Petri-disease-infected grapevines⁴⁶. On the other hand, catechin can be degraded by different fungi and used as carbon source for growth^{55–57}. Leaves from all susceptible *V. vinifera* cultivars had higher levels of catechin/epicatechin and an over-expression of *LAR2* gene. We hypothesize that, instead of being part of an effective defence mechanism for the plant, pathogens may be using catechin to develop and establish a successful infection.

With this work, we uncovered an important part of the metabolic map of the pathogen-resistance metabolism in grapevine, identifying key metabolic players. By assessing gene expression of key metabolic enzymes, we propose that both catechin/epicatechin and *LAR2* may be putative biomarkers of susceptibility. Despite the fact that further studies have to be conducted with a larger dataset to validate our hypothesis, we consider that our results open new insights towards the development of assays for progeny selection in breeding programs.

The study of constitutive expression and accumulation of compounds in grapevine is extremely important as it can uncover differences associated to resistance/susceptibility to different fungal/oomycete pathogens.

Materials and methods

Plant material. Five wild *Vitis* species, one *Vitis vinifera* subsp. *sylvestris* (wild plants that grow into Portuguese river basins) and five *Vitis vinifera* cultivars were investigated (Table 1).

The resistance of *Vitis* genotypes was accessed through bibliographic searches following the classification of Organisation Internationale de la Vigne et du Vin (<https://www.oiv.int>) and the phenotype behavior observed in field conditions into the Portuguese Ampelographic *Vitis* Collection (*Coleção Ampelográfica Nacional*, CAN). CAN is property of INIAV-Estação Vitivinícola Nacional (Dois Portos), located at Quinta da Almoinha, 60 km north of Lisbon (9° 11' 19" W; 39° 02' 31" N; 75 m above sea level).

Established since 1988 and replicated to a new place in 2013 and 2014, according to maintenance conditions: established in homogeneous modern alluvial soils (lowlands) as well as well drained soil; rootstock of a unique variety (Selection Oppenheim 4–SO4) was used for all accessions including other *Vitis* species and other rootstocks represented in the field; each accession comes from one unique plant. CAN occupy nearly 2 ha of area and the climate of this region is temperate with dry and mild summer, in almost all regions of the northern mountain system Montejuento-Estrela and the regions of the west coast of Alentejo and Algarve⁵⁸.

For plant material collection, the best possible health status was guaranteed for all accessions was confirmed: plants were tested for the principal grapevine fungal/oomycetes diseases as well as grapevine viruses (healthy genotypes and synonym accessions were planted in continuous line for didactic proposes); same trailing system (bilateral cordon, Royat), canopy maintenance and agricultural management.

Three leaves (third to fifth from the shoot to apex) were harvested in each one of 7 plants of accession (biological replicate) and immediately frozen in liquid nitrogen and stored at –80 °C until analysis. All genotypes leaves were collected in the same day at the same time. Three biological replicates containing leaves from 2 to 3

different plants were analyzed. In overall, four wild *Vitis* species, one *Vitis vinifera* subsp. *sylvestris* (wild plants that grow into Portuguese river basins) and five *Vitis vinifera* cultivars were used in this experiment (Table 1).

Metabolite extraction and FT-ICR-MS analysis. Metabolite extraction was performed as previously described²⁸. Briefly, 0.1 g of plant material was extracted with 1 mL of 40% methanol (LC-MS grade, Merck)/40% chloroform (Sigma Aldrich)/20% water (v/v/v). Samples were vortexed, kept in an orbital shaker at room temperature and centrifuged for phase separation. The aqueous/methanol layer was further processed by solid-phase extraction using Merck LiChrolut RP-18 columns, pre-equilibrated and extracted with methanol. The methanol fraction was evaporated under a nitrogen stream and reconstituted in 1 mL of methanol. For FT-ICR-MS analysis, samples were diluted 1000-fold in methanol and human leucine enkephalin (Sigma Aldrich) was added for internal calibration of each mass spectrum ($[M+H]^+ = 556.276575$ Da or $[M-H]^- = 554.262022$ Da). For positive ionization mode analysis (ESI⁺), formic acid (Sigma Aldrich, MS grade) was added to all samples at a final concentration of 0.1% (v/v). Samples were analysed by direct infusion on an Apex Qe 7-T Fourier Transform Ion Cyclotron Resonance Mass Spectrometer (FT-ICR-MS, Brüker Daltonics). Spectra were acquired at both positive (ESI⁺) and negative (ESI⁻) electrospray ionization modes, in the mass range of 100 to 1000 Th, with an accumulation of 250 scans for each spectrum.

Data pre-processing and profiling by multivariate statistical analysis. Data Analysis 5.0 (Brüker Daltonics, Bremen, Germany) was used to internally calibrate each mass spectrum using leucine enkephalin for single point calibration. Peaks were considered at a minimum signal-to-noise ratio of 4. The data matrix for statistical analysis was created by peak alignment at 1 ppm difference tolerance. Only peaks occurring in more than two thirds of the replicate samples for each cultivar were selected for further analysis. Missing values were imputed by half of the global minimum value of all spectra. Data was normalized by the signal of the standard leucine enkephalin in each sample, transformed using the generalized log-transformation and Pareto scaled. The transformation with generalized log has been shown to correct for heteroscedasticity and reduce the skewness⁵⁹. Two unsupervised methods were applied to investigate the metabolic profile similarities between *Vitis* samples. Sample Hierarchical Clustering (agglomerative) was performed, for each ionization mode, using Euclidian distance as the metric and Ward as the method for cluster aggregation. Principal Component Analysis (PCA) models for each ionization mode were also built, retaining a minimum number of principal components necessary to explain 95% of variance (12 components for ESI⁺ PCA and 15 components for ESI⁻ PCA).

Classifiers for resistant/partial resistant (n = 21) vs. susceptible (n = 12) genotypes were obtained by building Orthogonal Partial Least Squares Discriminant Analysis (OPLS-DA) models. Two target groups were defined: a “resistant/partial resistant” attributed to all the wild *Vitis* plus the domesticated *V. vinifera* ‘Regent’, and the “susceptible” group, attributed to all the remaining domesticated *V. vinifera* cultivars, for model training. Group labels were encoded as +1, -1, and the signs of the dependent-variable components of the partial least squares fitted models were used as decision rules for classification. Model accuracy, R² and Q² metrics were estimated by sevenfold stratified cross-validation. For each model, a permutation test was carried out to assess its significance, by sampling 1000 label permutations. All analysis were carried out using the package *metabolinks* (<https://github.com/aeferreira/metabolinks>), which uses packages *scipy*⁶⁰ and *scikit-learn*⁶¹.

Univariate statistical analysis, metabolite annotation and pathway mapping. The significance of variables in data matrices for ESI⁺ and ESI⁻ was assessed by performing two-tail *t*-tests to compare variables in “resistant/partial resistant” (n = 21) and “susceptible” (n = 12) groups. *p*-values were corrected for multiple testing by the Benjamini–Hochberg procedure. An FDR-corrected *p*-value cut-off of 0.01 was used for further consideration of a variable in the analysis. Variables were then sorted according to the fold-change defined as the ratio of the averages of “resistant/partial resistant”/“susceptible”. A variation of at least $|\log_2(\text{FC})| \geq 1$ was required for a variable to be considered discriminatory.

For metabolite annotation, the *m/z* values of discriminatory peaks were submitted to MassTRIX 3 server³⁴ (<https://masstrix.org>, accessed in April 2020), allowing for the presence of adducts M + H⁺, M + K⁺ and M + Na⁺ for positive scan mode and the adducts M - H⁺ and M + Cl⁻ for negative mode. A maximum *m/z* deviation of 2 ppm was accepted; “KEGG (Kyoto Encyclopaedia of Genes and Genomes)/HMDB (Human Metabolome Database)/LipidMaps without isotopes” was selected for database search; *Vitis vinifera* was selected as the organism. For compound taxonomical classification, each KEGG’s metabolite identifier obtained from the MassTRIX search was further annotated according to the relevant ontologies of KEGG’s BRITE hierarchies⁶², if any existed for the identifier. For the “lipids” ontology the LipidMaps lipid classification system⁶³ was used. Discriminatory compounds were mapped into metabolic pathways using Pathview⁶⁴ (<https://pathview.uncc.edu>), selecting the *Vitis vinifera* Flavonoid biosynthesis (“vvi00941”) and Flavone and Flavonol Biosynthesis (“vvi00944”) pathways. For visualization, $\log_2(\text{FC})$ values were colour coded within the boundaries of -5 (red, abundant in the “susceptible” group) and 5 (blue, abundant in “resistant/partial resistant” group).

Total RNA extraction and cDNA synthesis. Total RNA was extracted from the leaves of the different *Vitis* samples using the Spectrum Plant Total RNA Kit (Sigma-Aldrich, USA), according to the manufacturer’s instructions. Residual genomic DNA (gDNA) contamination was removed with On-Column DNase Digestion I Set (Sigma-Aldrich, USA), following the manufacturer’s instructions. After extraction, all RNA samples were quantified, and the purity determined with the absorbance ratios at 260/280 and 260/230 nm using a NanoDrop-1000 spectrophotometer (Thermo Scientific). RNA integrity was verified by agarose gel electrophoresis. To confirm the absence of contaminating gDNA, a qPCR analysis of a target on the crude of total RNA^{65,66} was performed using *EF1 α* as target. Complementary DNA (cDNA) was synthesized from 2.5 μg of total RNA using

RevertAid H Minus Reverse Transcriptase (Fermentas, Ontario, Canada) anchored with Oligo(dT)₂₃ primer (Sigma-Aldrich, USA), as previously described³⁶. For gene expression analysis, ‘Cabernet sauvignon’ was not included in the dataset due to the lack of sufficient plant material from the same collection used for metabolomics studies.

Reference genes selection and expression analysis. Ten candidate genes were selected based on their previous description as good qPCR reference genes for *Arabidopsis thaliana*³⁵ and grapevine^{36,37,67} (Table 2). Nine of the selected genes were previously described as reference genes for grapevine: *60S ribosomal protein L18 (60S)*, *small nuclear ribonucleoprotein SmD3* [currently annotated as *Tetratricopeptide repeat protein 7B (TPR7B)*], *elongation factor 1-alpha (EF1α)*, *ubiquitin-conjugating enzyme (UBQ)*, *SAND family protein (SAND)*, *Actin (ACT)*, *glyceraldehyde-3-phosphate dehydrogenase (GAPDH)*, *alpha-tubulin 3-chain (α-TUB)* and *beta-tubulin 1-chain (β-TUB)*^{67–71}. The other gene was retrieved from NCBI (<https://www.ncbi.nlm.nih.gov/>) as being homologous to *Arabidopsis adaptor protein-2 MU-adaptin (AP2M)*.

qPCR analysis was carried out in a StepOne Real-Time PCR system (Applied Biosystems, Sourceforge, USA), using Maxima SYBR Green qPCR Master Mix (2×) kit (Fermentas, Ontario, Canada), following supplier’s instructions. Thermal cycling analysis of all genes was performed under the following conditions: initial denaturation step at 95 °C for 10 min; followed by 40 cycles of denaturation at 95 °C for 15 s plus annealing for 30 s (annealing temperatures for each primer pair were indicated at Table 4). Each set of reactions included a negative control without cDNA template. Non-specific PCR products were analysed by melting curves (see Supplementary Figure F2 online [a–j]). Three biological replicates and two technical replicates were used for each sample. To assess the amplification efficiency of each reference/candidate gene, a pool of all cDNA samples was diluted (1:4) and used to generate a five-point standard curve based on a tenfold dilution series.

Determination of reference gene stability. To evaluate reference gene stability, all *Vitis* genotypes were analysed together and the three publicly available software tools GeNorm v. 3.5⁶⁵, NormFinder⁷² and the BestKeeper tool⁷³ were used.

GeNorm is based on the pairwise variation of a single reference candidate gene relative to all other genes. GeNorm algorithm calculates a gene expression stability measure (M value) for each gene, based on the average pairwise expression ratio between a gene and each of the other genes being compared in the analysis. Accordingly, a gene displaying a low M value presents a low variance in its expression. NormFinder is based on a variance estimation approach, which calculates an expression stability value (SV) for each gene analysed. It enables estimation of the overall variation of the reference genes, considering intra and intergroup variations of the sample set. According to this algorithm, genes with lowest SV will be top ranked⁷². The BestKeeper tool calculates standard deviation (SD) based on quantification cycle (Cq) values of all candidate reference genes⁷³. Moreover, BestKeeper compares each reference gene to the BestKeeper Index (BKI) and calculate a Pearson correlation coefficient (r). Higher r values suggest more stable expression. Genes with SD less than 1 and with the highest coefficient of correlation have the highest stability. A comprehensive ranking, was established by RefFinder, a tool that integrates GeNorm, Normfinder, BestKeeper, and the comparative ΔCt method, based on the rankings from each program, allows the assignment of an appropriate weight to an individual gene and calculates the geometric mean of their weights for the overall final ranking.

A comprehensive ranking of the candidate reference genes was established by calculating the arithmetic mean of the ranking in each algorithm used, as reported previously³². Each gene was ranked from 1 (most stable) to 11 (least stable). The definition of the optimal number of genes required for normalization was achieved by GeNorm pairwise variation analysis⁷⁴. Additionally, RefFinder was used as a verification tool of our results⁷⁵ (<https://www.heartcure.com.au/reffinder/>).

Selection and expression analysis of genes of interest. Genes encoding for enzymes involved in biosynthetic or catabolic reactions of the discriminatory metabolites were selected based on the fold-change of discriminatory compounds and pathway mapping.

A total of 7 genes were selected for expression analysis, coding for the following enzymes: caffeic acid O-methyltransferase (*COMT*), leucoanthocyanidin reductase 2 (*LAR2*), anthocyanidin reductase (*ANR*); fatty acyl-ACP thioesterase B (*FatB*), myo-inositol monophosphatase (*IMPL1*), flavonoid 3',5'-hydroxylase (*F3'5'H*), and UDP-glucose:flavonoid 3-O-glucosyltransferase (*UFGT*). The selection of the genes followed the criteria of the genes being functionally described as being involved in the biosynthesis/catalysis of the compounds.

The sequences for the genes coding for the enzymes involved in catechin and epicatechin synthesis used in this study were previously described in *Vitis*^{76,77}. The remaining genes were selected by comparison of *Arabidopsis thaliana* homologue genes in the *Vitis vinifera* genome coding genes using the Basic Local Alignment Search Tool (BLAST, <https://blast.ncbi.nlm.nih.gov/Blast.cgi>). When gene families existed for the selected genes, the choice of the gene was made based on information on the literature regarding its involvement in plant resistance/defence.

Genes of interest selected for gene expression analysis were presented in Table 4. Non-specific PCR products were also analysed by melting curves (see Supplementary Figure F2 online [k–q]). For each gene, both standard curve efficiency and SD were calculated by the Hellemans et al. equations⁷⁸ (Table 4).

After qPCR analysis, the quantification cycle (Cq) values of the genes of interest in all *Vitis* samples, were extracted and normalized by the geometric mean of the Cqs of *UBQ*, *SAND* and *EF1α*, described in this work as the most stable genes for sample normalization. The ability for each possible gene to discriminate between resistant/partial resistant and susceptible cultivars was assessed by testing the homocedasticity of groups with Bartlett’s test and by assessing significance of the differences between groups with a Wilcoxon–Mann–Whitney’s U test. All *p*-values were adjusted for false discovery rate using the Benjamini–Hochberg procedure. Results yielding

an adjusted p -value ≤ 0.05 were considered statistically significant. Bartlett's and Wilcoxon–Mann–Whitney tests were performed in R⁷⁹, using the 'bartlett.test', 'wilcox.test' and 'p.adjust' functions, respectively.

Data availability

The metabolomics data that support the findings of this study are available in figshare data repository with the identifier <https://doi.org/10.6084/m9.figshare.12357314> (<https://doi.org/10.6084/m9.figshare.12357314>)⁸⁰.

Received: 22 May 2020; Accepted: 2 September 2020

Published online: 24 September 2020

References

1. Organisation of Vine and Wine. 2019 OIV Statistical Report on World Vitiviniculture. <https://oiv.int/public/medias/6782/oiv-2019-statistical-report-on-world-vitiviniculture.pdf> (2019).
2. Organisation of Vine and Wine. *The distribution of the world's grapevine varieties*. <https://www.oiv.int/en/oiv-life/the-distribution-of-the-worlds-grapevine-varieties-new-oiv-study-available> (2019).
3. Micheloni, C. EIP-AGRI Focus Group Diseases and pests in viticulture - STARTING PAPER. (2017).
4. Peressotti, E. *et al.* Breakdown of resistance to grapevine downy mildew upon limited deployment of a resistant variety. *BMC Plant Biol.* **10**, 147 (2010).
5. Delmotte, F. *et al.* Rapid and multiregional adaptation to host partial resistance in a plant pathogenic oomycete: Evidence from European populations of *Plasmopara viticola*, the causal agent of grapevine downy mildew. *Infect. Genet. Evol.* **27**, 500–508 (2014).
6. Cabras, P. & Angioni, A. Pesticide residues in grapes, wine, and their processing products. *J. Agric. Food Chem.* **48**, 967–973 (2000).
7. Lamichhane, J. R., Dachbrodt-Saaydeh, S., Kudsk, P. & Messéan, A. Toward a reduced reliance on conventional pesticides in European agriculture. *Plant Dis.* **100**, 10–24 (2015).
8. Bove, F. & Rossi, V. Components of partial resistance to *Plasmopara viticola* enable complete phenotypic characterization of grapevine varieties. *Sci. Rep.* **10**, 1–12 (2020).
9. Zini, E. *et al.* R-loci arrangement versus downy and powdery mildew resistance level: A *Vitis* hybrid survey. *Int. J. Mol. Sci.* **20**, 3526 (2019).
10. Reynolds, A. G. *Grapevine Breeding Programs for the Wine Industry* (Elsevier, Amsterdam, 2015).
11. Eibach, R. & Töpfer, R. Traditional grapevine breeding techniques. in *Grapevine Breeding Programs for the Wine Industry* 3–22 (Woodhead Publishing, 2015).
12. Organisation of Vine and Wine. 2nd edition of the OIV Descriptor list for grape varieties and *Vitis* species. (2009).
13. Ali, K. *et al.* Alterations in grapevine leaf metabolism upon inoculation with *Plasmopara viticola* in different time-points. *Plant Sci.* **191–192**, 100–107 (2012).
14. Nascimento, R. *et al.* Early stage metabolic events associated with the establishment of *Vitis vinifera*–*Plasmopara viticola* compatible interaction. *Plant Physiol. Biochem.* **137**, 1–13 (2019).
15. Becker, L. *et al.* Metabolic study of grapevine leaves infected by downy mildew using negative ion electrospray—Fourier transform ion cyclotron resonance mass spectrometry. *Anal. Chim. Acta* **795**, 44–51 (2013).
16. Malacarne, G. *et al.* Resistance to *Plasmopara viticola* in a grapevine segregating population is associated with stilbenoid accumulation and with specific host transcriptional responses. *BMC Plant Biol.* **11**, 114 (2011).
17. Chitarrini, G. *et al.* Identification of biomarkers for defense response to *Plasmopara viticola* in a resistant grape variety. *Front. Plant Sci.* **8**, 1524 (2017).
18. Batovska, D. I. *et al.* Biomarkers for the prediction of the resistance and susceptibility of grapevine leaves to downy mildew. *J. Plant Physiol.* **166**, 781–785 (2009).
19. Batovska, D. I. *et al.* Preliminary study on biomarkers for the fungal resistance in *Vitis vinifera* leaves. *J. Plant Physiol.* **165**, 791–795 (2008).
20. Figueiredo, A. *et al.* Transcriptional and metabolic profiling of grape (*Vitis vinifera* L.) leaves unravel possible innate resistance against pathogenic fungi. *J. Exp. Bot.* **59**, 3371–3381 (2008).
21. Viret, O., Spring, J.-L. & Gindro, K. Stilbenes: Biomarkers of grapevine resistance to fungal diseases. *OENO ONE* **52**, 235–241 (2018).
22. Wolfender, J.-L., Rudaz, S., Choi, Y. H. & Kim, H. K. Plant metabolomics: From holistic data to relevant biomarkers. *Curr. Med. Chem.* **20**, 1056–1090 (2013).
23. Shepherd, L. V., Fraser, P. & Stewart, D. Metabolomics: A second-generation platform for crop and food analysis. *Bioanalysis* **3**, 1143–1159 (2011).
24. Fiehn, O. Metabolomics—The link between genotypes and phenotypes. *Plant Mol. Biol.* **48**, 155–171 (2002).
25. Bennett, R. N. & Wallsgrove, R. M. Secondary metabolites in plant defence mechanisms. *New Phytol.* **127**, 617–633 (1994).
26. Maia, M. *et al.* *Vitis vinifera* 'Pinot noir' leaves as a source of bioactive nutraceutical compounds. *Food Funct.* **10**, 3822–3827 (2019).
27. Adrian, M. *et al.* Metabolic fingerprint of PS3-induced resistance of grapevine leaves against *Plasmopara viticola* revealed differences in elicitor-triggered defenses. *Front. Plant Sci.* **8**, 101 (2017).
28. Maia, M. *et al.* Metabolite extraction for high-throughput FTICR-MS-based metabolomics of grapevine leaves. *EuPA Open Proteom.* **12**, 4–9 (2016).
29. Fang, C., Fernie, A. R. & Luo, J. Exploring the diversity of plant metabolism. *Trends Plant Sci.* **24**, 83–98 (2019).
30. Alseekh, S. *et al.* Identification and mode of inheritance of quantitative trait loci for secondary metabolite abundance in tomato. *Plant Cell* **27**, 485–512 (2015).
31. Toubiana, D. *et al.* Metabolic profiling of a mapping population exposes new insights in the regulation of seed metabolism and seed, fruit, and plant relations. *PLoS Genet.* **8**, e1002612 (2012).
32. Wang, Q. *et al.* Stability of endogenous reference genes in postmortem human brains for normalization of quantitative real-time PCR data: Comprehensive evaluation using geNorm, NormFinder, and BestKeeper. *Int. J. Legal Med.* **126**, 943–952 (2012).
33. Gong, L. *et al.* Genetic analysis of the metabolome exemplified using a rice population. *PNAS* **110**, 20320–20325 (2013).
34. Suhre, K. & Schmitt-Kopplin, P. MassTRIX: Mass translator into pathways. *Nucl. Acids Res.* **36**, W481–W484 (2008).
35. Czechowski, T., Stitt, M., Altmann, T., Udvardi, M. K. & Scheible, W.-R. Genome-wide identification and testing of superior reference genes for transcript normalization in *Arabidopsis*. *Plant Physiol.* **139**, 5–17 (2005).
36. Monteiro, F., Sebastiana, M., Pais, M. S. & Figueiredo, A. Reference gene selection and validation for the early responses to Downy Mildew infection in susceptible and resistant *Vitis vinifera* cultivars. *PLoS ONE* **8**, e72998 (2013).
37. Polesani, M. *et al.* General and species-specific transcriptional responses to downy mildew infection in a susceptible (*Vitis vinifera*) and a resistant (*V. riparia*) grapevine species. *BMC Genomics* **11**, 117 (2010).
38. Reid, K. E., Olsson, N., Schlosser, J., Peng, F. & Lund, S. T. An optimized grapevine RNA isolation procedure and statistical determination of reference genes for real-time RT-PCR during berry development. *BMC Plant Biol.* **6**, 1 (2006).

39. Castro, P., Román, B., Rubio, J. & Die, J. V. Selection of reference genes for expression studies in *Cicer arietinum* L.: Analysis of cyp81E3 gene expression against *Ascochyta rabiei*. *Mol Breed.* **29**, 261–274 (2011).
40. Remans, T. *et al.* Normalisation of real-time RT-PCR gene expression measurements in *Arabidopsis thaliana* exposed to increased metal concentrations. *Planta* **227**, 1343–1349 (2008).
41. Dry, I., Riaz, S., Fuchs, M., Sosnowski, M. & Thomas, M. Scion breeding for resistance to biotic stresses. in *The Grape Genome* 319–348 (Springer, Berlin, 2019).
42. Bacilieri, R. *et al.* Genetic structure in cultivated grapevines is linked to geography and human selection. *BMC Plant Biol.* **13**, 25 (2013).
43. Laucou, V. *et al.* High throughput analysis of grape genetic diversity as a tool for germplasm collection management. *Theor. Appl. Genet.* **122**, 1233–1245 (2011).
44. Kortekamp, A. Expression analysis of defence-related genes in grapevine leaves after inoculation with a host and a non-host pathogen. *Plant Physiol. Biochem.* **44**, 58–67 (2006).
45. Kortekamp, A. & Zyprian, E. Characterization of Plasmopara-resistance in grapevine using in vitro plants. *J. Plant Physiol.* **160**, 1393–1400 (2003).
46. Del Río, J. A. *et al.* Phenolic compounds have a role in the defence mechanism protecting grapevine against the fungi involved in Petri disease. *Phytopathologia Mediterranea* **43**, 87–94 (2004).
47. Niesen, D. B., Hessler, C. & Seeram, N. P. Beyond resveratrol: A review of natural stilbenoids identified from 2009–2013. *J. Berry Res.* **3**, 181–196 (2013).
48. Teh, S. L. *et al.* Genetic analysis of stilbenoid profiles in grapevine stems reveals a major mQTL hotspot on chromosome 18 associated with disease-resistance motifs. *Hortic. Res.* **6**, 1–11 (2019).
49. Mathesius, U. Flavonoid functions in plants and their interactions with other organisms. *Plants* **7**, (2018).
50. Treutter, D. Significance of flavonoids in plant resistance and enhancement of their biosynthesis. *Plant Biol.* **7**, 581–591 (2005).
51. Braidot, E. *et al.* Transport and accumulation of flavonoids in grapevine (*Vitis vinifera* L.). *Plant Signal. Behav.* **3**, 626–632 (2008).
52. Mattivi, F., Guzzon, R., Vrhovsek, U., Stefanini, M. & Velasco, R. Metabolite profiling of grape: Flavonols and anthocyanins. *J. Agric. Food Chem.* **54**, 7692–7702 (2006).
53. Park, H.-J. & Cha, H.-C. Flavonoids from leaves and exocarps of the grape Kyoho. *Korean J. Biol. Sci.* **7**, 327–330 (2003).
54. Yu, K., Jun, J. H., Duan, C. & Dixon, R. A. VvLAR1 and VvLAR2 are bifunctional enzymes for proanthocyanidin biosynthesis in grapevine1[OPEN]. *Plant Physiol.* **180**, 1362–1374 (2019).
55. Contreras-Dominguez, M. *et al.* Use of fungal enzymes to study the degradation of specific plant polyphenols. 508–518 (2008).
56. Sambandam, T. & Mahadevan, A. Degradation of catechin and purification and partial characterization of catechin oxygenase from *Chaetomium cupreum*. *World J. Microbiol. Biotechnol.* **9**, 37–44 (1993).
57. Aguilar, C. N. *et al.* Catechin degradation by several fungal strains isolated from Mexican desert. *J. Microbiol. Biotechnol.* **14**(2), 426–429 (2004).
58. Peel, M. C., Finlayson, B. L. & McMahon, T. A. Updated world map of the Köppen-Geiger climate classification. *Hydrol. Earth Syst. Sci.* **11**, 1633–1644 (2007).
59. van den Berg, R. A., Hoefsloot, H. C., Westerhuis, J. A., Smilde, A. K. & van der Werf, M. J. Centering, scaling, and transformations: Improving the biological information content of metabolomics data. *BMC Genomics* **7**, 142 (2006).
60. Virtanen, P. *et al.* SciPy 1.0: Fundamental algorithms for scientific computing in Python. *Nat. Methods* **17**, 261–272 (2020).
61. Pedregosa, F. *et al.* Scikit-learn: Machine Learning in Python. *J. Mach. Learn. Res.* **12**, 2825–2830 (2011).
62. Kanehisa, M., Sato, Y., Kawashima, M., Furumichi, M. & Tanabe, M. KEGG as a reference resource for gene and protein annotation. *Nucleic Acids Res.* **44**, D457–D462 (2016).
63. Fahy, E. *et al.* Update of the LIPID MAPS comprehensive classification system for lipids. *J. Lipid Res.* **50**(Suppl), S9–14 (2009).
64. Luo, W. & Brouwer, C. Pathview: An R/Bioconductor package for pathway-based data integration and visualization. *Bioinformatics* **29**, 1830–1831 (2013).
65. Vandesompele, J. *et al.* Accurate normalization of real-time quantitative RT-PCR data by geometric averaging of multiple internal control genes. *Genome Biol.* **3**, RESEARCH0034 (2002).
66. Vandesompele, J., De Paepe, A. & Speleman, F. Elimination of primer-dimer artifacts and genomic coamplification using a two-step SYBR green I real-time RT-PCR. *Anal. Biochem.* **303**, 95–98 (2002).
67. Reid, K. E., Olsson, N., Schlosser, J., Peng, F. & Lund, S. T. An optimized grapevine RNA isolation procedure and statistical determination of reference genes for real-time RT-PCR during berry development. *BMC Plant Biol.* **6**, 27 (2006).
68. Gamm, M. *et al.* Identification of reference genes suitable for qRT-PCR in grapevine and application for the study of the expression of genes involved in pterostilbene synthesis. *Mol. Genet. Genomics* **285**, 273–285 (2011).
69. Trouvelot, S. *et al.* A β -1, 3 glucan sulfate induces resistance in grapevine against *Plasmopara viticola* through priming of defense responses, including HR-like cell death. *Mol. Plant Microbe Interact.* **21**, 232–243 (2008).
70. Figueiredo, A. *et al.* Cultivar-specific kinetics of gene induction during downy mildew early infection in grapevine. *Funct. Integr. Genomics* **12**, 379–386 (2012).
71. Selim, M. *et al.* Identification of suitable reference genes for real-time RT-PCR normalization in the grapevine-downy mildew pathosystem. *Plant Cell Rep.* **31**, 205–216 (2012).
72. Andersen, C. L., Jensen, J. L. & Ørntoft, T. F. Normalization of real-time quantitative reverse transcription-PCR data: A model-based variance estimation approach to identify genes suited for normalization, applied to bladder and colon cancer data sets. *Cancer Res.* **64**, 5245–5250 (2004).
73. Pfaffl, M. W., Tichopad, A., Prgomet, C. & Neuvians, T. P. Determination of stable housekeeping genes, differentially regulated target genes and sample integrity: BestKeeper–Excel-based tool using pair-wise correlations. *Biotechnol. Lett.* **26**, 509–515 (2004).
74. Tunbridge, E. M., Eastwood, S. L. & Harrison, P. J. Changed relative to what? Housekeeping genes and normalization strategies in human brain gene expression studies. *Biol. Psychiatry* **69**, 173–179 (2011).
75. Xie, F., Xiao, P., Chen, D., Xu, L. & Zhang, B. miRDeepFinder: A miRNA analysis tool for deep sequencing of plant small RNAs. *Plant Mol. Biol.* <https://doi.org/10.1007/s11103-012-9885-2> (2012).
76. Bogs, J. Proanthocyanidin synthesis and expression of genes encoding leucoanthocyanidin reductase and anthocyanidin reductase in developing grape berries and grapevine leaves. *Plant Physiol.* **139**, 652–663 (2005).
77. Gagné, S., Lacampagne, S., Claisse, O. & Gény, L. Leucoanthocyanidin reductase and anthocyanidin reductase gene expression and activity in flowers, young berries and skins of *Vitis vinifera* L. cv. Cabernet-Sauvignon during development. *Plant Physiol. Biochem.* **47**, 282–290 (2009).
78. Hellemans, J., Mortier, G., De Paepe, A., Speleman, F. & Vandesompele, J. qBase relative quantification framework and software for management and automated analysis of real-time quantitative PCR data. *Genome Biol.* **8**, R19 (2007).
79. R Core Team. *R: A Language and Environment for Statistical Computing*. (R Foundation for Statistical Computing, 2019).
80. Maia, M., Figueiredo, A., Sousa Silva, M. & Ferreira, A. Grapevine untargeted metabolomics to uncover potential biomarkers of fungal/oomycetes-associated diseases. *figshare. Dataset.* <https://doi.org/10.6084/m9.figshare.12357314>.

Acknowledgements

The authors acknowledge the support from Fundação para a Ciência e a Tecnologia (Portugal) through the projects PEst-OE/BIA/UI4046/2014, PTDC/BAA-MOL/28675/2017, Investigator FCT programs IF 00819/2015 to AF and CEECIND/02246/2017 to MSS, the post-doc grant SFRH/BPD/114664/2016 to FM and the PhD grant SFRH/BD/116900/2016 to MM. We also acknowledge the support from the Portuguese Mass Spectrometry Network (LISBOA-01-0145-FEDER-022125) and the Project EU_FT-ICR_MS, funded by the Europe and Union's Horizon 2020 research and innovation programme under grant agreement nr. 731077.

Author contributions

M.M., M.S.S. and A.F. conceived the study and performed the experimental design. J.C., J.E.E.D. and A.F. collected the plant material. M.M., A.P.M., M.S.S. and C.C. performed the untargeted metabolomics analysis. M.M., F.T., A.E.N.F. and M.S.S. performed metabolomics data analysis. F.M. and A.F. established the reference genes. M.M. and A.F. performed the gene of interest expression analysis. R.N. and A.F. performed gene statistical analysis. M.M., A.E.N.F., A.F. and M.S.S. wrote the manuscript. All authors reviewed the manuscript.

Competing interests

The authors declare no competing interests.

Additional information

Supplementary information is available for this paper at <https://doi.org/10.1038/s41598-020-72781-2>.

Correspondence and requests for materials should be addressed to A.F. or M.S.S.

Reprints and permissions information is available at www.nature.com/reprints.

Publisher's note Springer Nature remains neutral with regard to jurisdictional claims in published maps and institutional affiliations.



Open Access This article is licensed under a Creative Commons Attribution 4.0 International License, which permits use, sharing, adaptation, distribution and reproduction in any medium or format, as long as you give appropriate credit to the original author(s) and the source, provide a link to the Creative Commons licence, and indicate if changes were made. The images or other third party material in this article are included in the article's Creative Commons licence, unless indicated otherwise in a credit line to the material. If material is not included in the article's Creative Commons licence and your intended use is not permitted by statutory regulation or exceeds the permitted use, you will need to obtain permission directly from the copyright holder. To view a copy of this licence, visit <http://creativecommons.org/licenses/by/4.0/>.

© The Author(s) 2020