

Georgia State University

ScholarWorks @ Georgia State University

GHPC Materials

Georgia Health Policy Center

10-11-2018

Blood Donation Fast Facts

Georgia Health Policy Center

Follow this and additional works at: https://scholarworks.gsu.edu/ghpc_materials

Recommended Citation

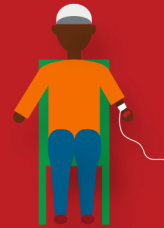
Georgia Health Policy Center, "Blood Donation Fast Facts" (2018). *GHPC Materials*. 140.
https://scholarworks.gsu.edu/ghpc_materials/140

This Article is brought to you for free and open access by the Georgia Health Policy Center at ScholarWorks @ Georgia State University. It has been accepted for inclusion in GHPC Materials by an authorized administrator of ScholarWorks @ Georgia State University. For more information, please contact scholarworks@gsu.edu.

Fast Facts About African-American Blood Donation

THE NEED FOR BLOOD

- Every two seconds someone in the U.S. needs blood.
- Blood cannot be manufactured. It can only come from generous, human donors.
- Patients with certain conditions, like sickle cell disease and thalassemia, may need blood frequently to prevent complications.



AFRICAN-AMERICAN BLOOD DONATION

- Up until now, African-Americans and other black descendants have donated blood at lower rates than the rest of the population. We need your help to change that!
- African-Americans and other black descendants are more likely to have rare blood types.
- Good matches are more likely if the donor and the recipient share the same racial and/or ethnic background.



GENERAL DONATION INFORMATION

- The entire donation process, from registration to post-donation snack, takes less than an hour.
- There is no risk of contracting a disease from donating blood.
- Most people who are at least 16 are eligible to give blood, even if they have diabetes or high blood pressure.
- You can always try again if you were turned away from donating because of low iron levels or a cold.

