

La Salle University

La Salle University Digital Commons

---

Explorer Café

Explorer Connection

---

6-24-2020

## **An Epidemic of Racism: Unpacking the Intersection of Inequality and COVID**

Christen Rexing PhD, MPH

Jason Diaz PhD

Follow this and additional works at: <https://digitalcommons.lasalle.edu/explorercafe>

---

# An Epidemic of Racism: Unpacking the Intersection of Inequality and COVID

*presented by*

Christen Rexing, PhD, MPH, Urban Public Health & Nutrition

Jason Diaz, PhD, Integrated Science, Business, and Technology

June 24, 2020

*Supported by the De La Salle  
Institute for Advanced Teaching and Learning*



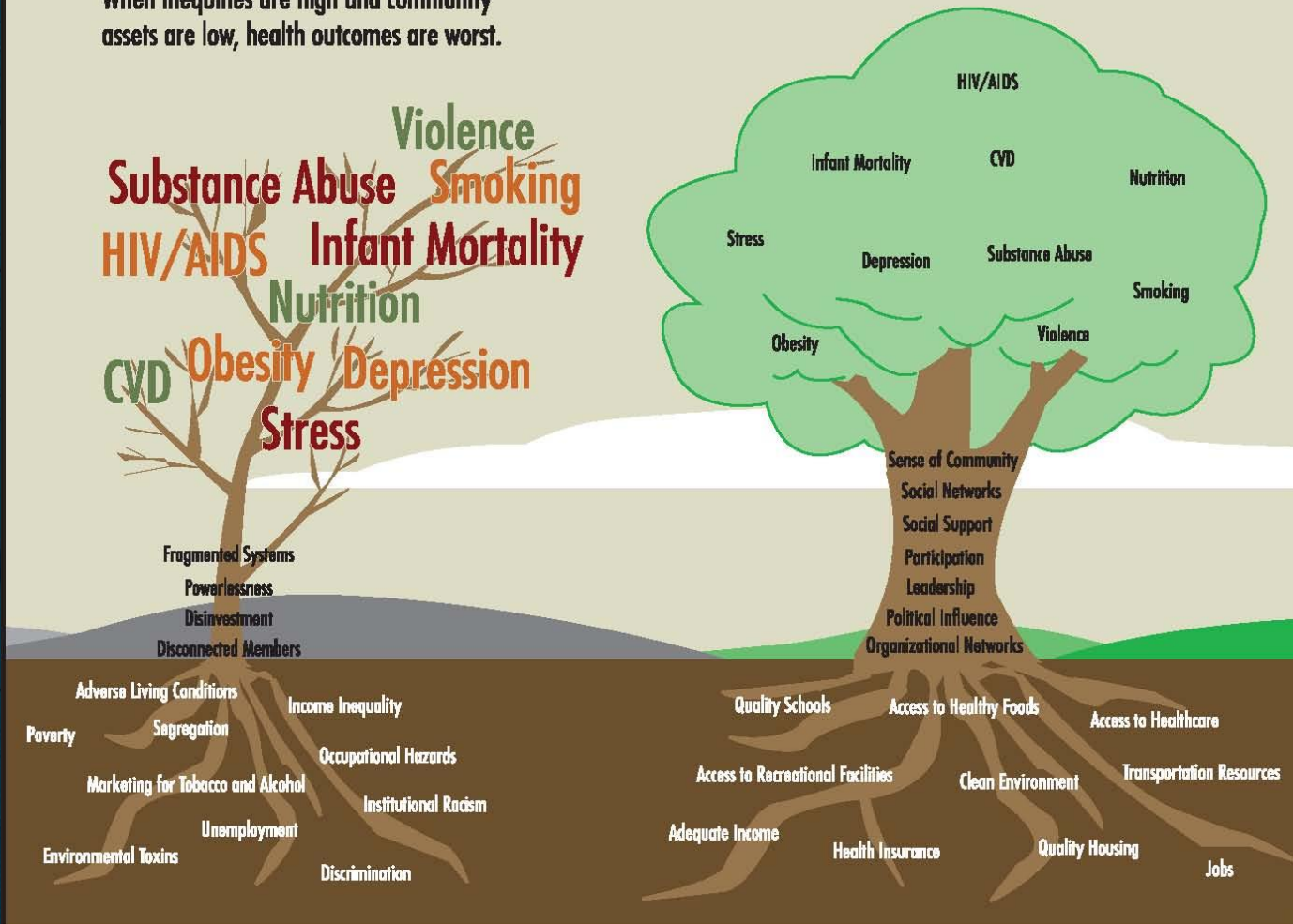


# Growing Communities: Social Determinants, Behavior and Health

*Our environments cultivate our communities and our communities nurture our health.*

When inequities are high and community assets are low, health outcomes are worst.

When inequities are low and community assets are high, health outcomes are better.



Health is rooted in social, political and economic structures.

**Structural inequalities are caused by systems that marginalize populations and make them vulnerable to abuse and trauma.**

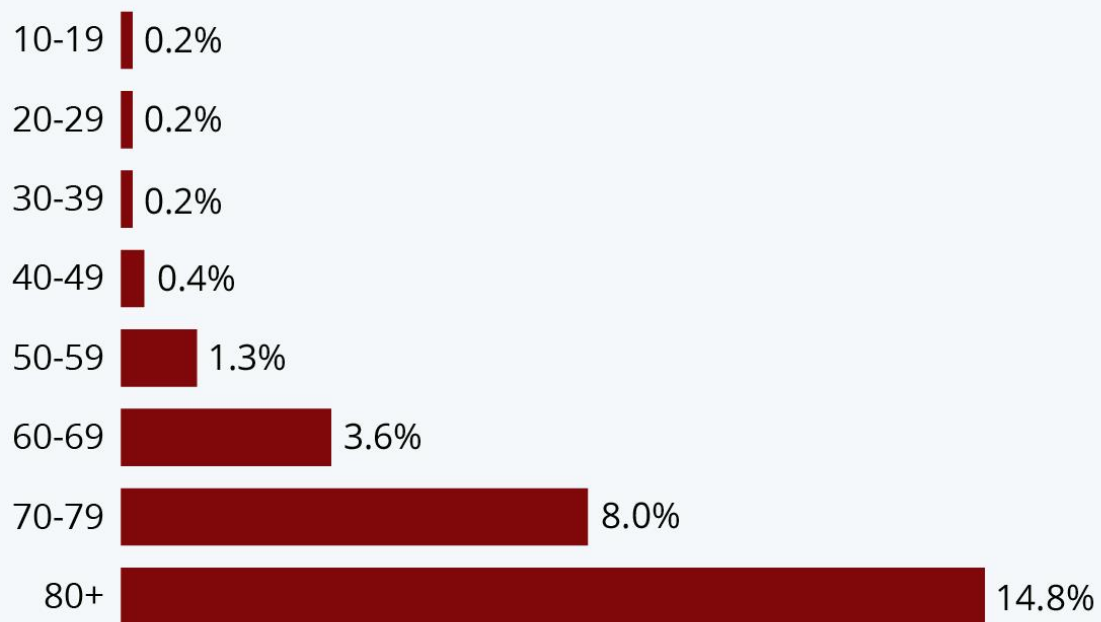
**What are some ways that existing inequalities have enhanced the pain of living through a pandemic?**



# Age Matters

## Study: Elderly Most At Risk From The Coronavirus

COVID-19 fatality rate by age (as of February 11, 2020)



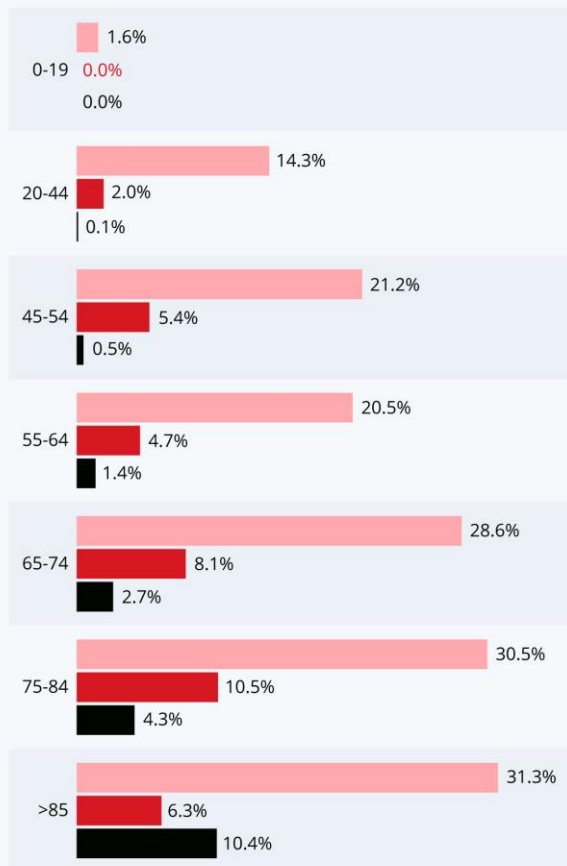
n=44,672 confirmed COVID-19 cases in Mainland China  
Source: Chinese Centre for Disease Control and Prevention



## How COVID-19 Affects Different U.S. Age Groups

Hospitalization, ICU admission and fatality rates for reported U.S. COVID-19 cases by age group\*

Hospitalization ICU admission Case fatality

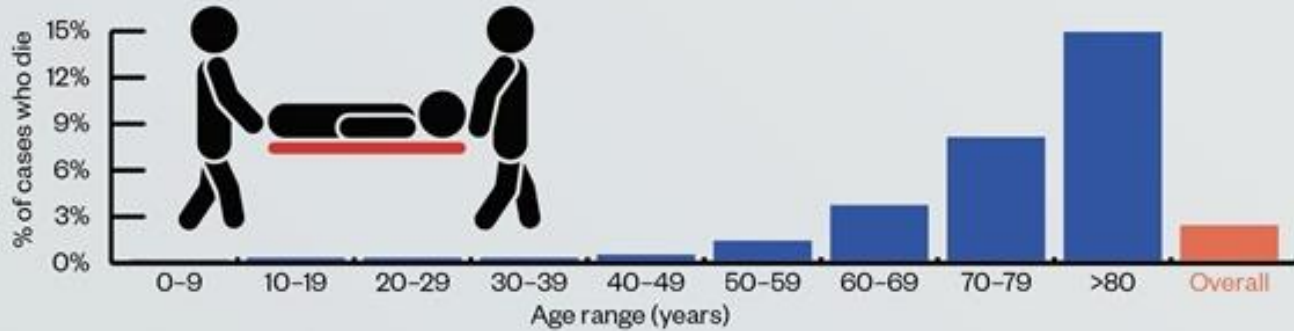


\* Based on 2,449 COVID-19 patients with a known age.  
(February 12-March 16, 2020).  
Source: Centers for Disease Control and Prevention

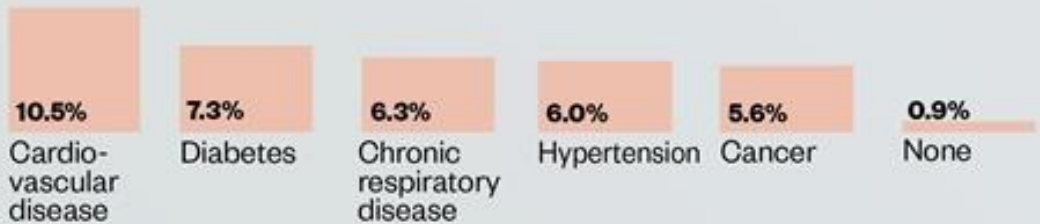


# Race Matters

## By age:



## By comorbid condition:



## By gender:

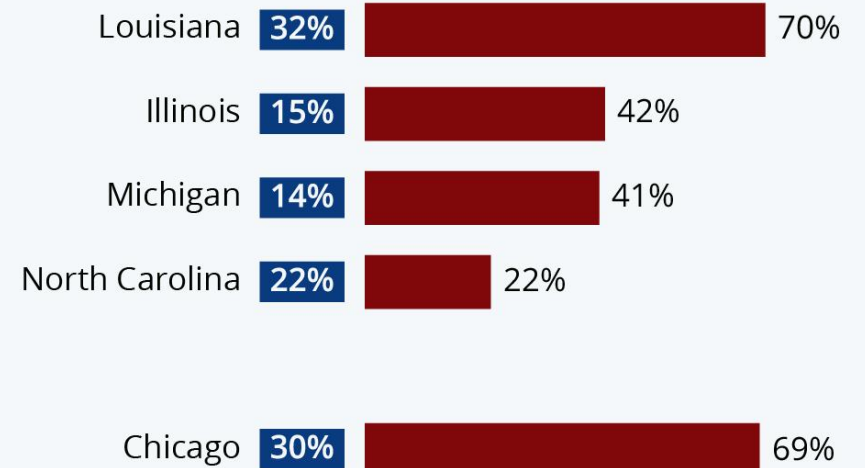
Males  
**2.8%**  
Females  
**1.7%**

People of color have a higher incidence of all of these

## COVID-19's Devastating Impact On African Americans

African American share of state/city populations and COVID-19 deaths (as of Apr 06, 2020)

■ Share of state/city's population ■ Share of COVID-19 deaths



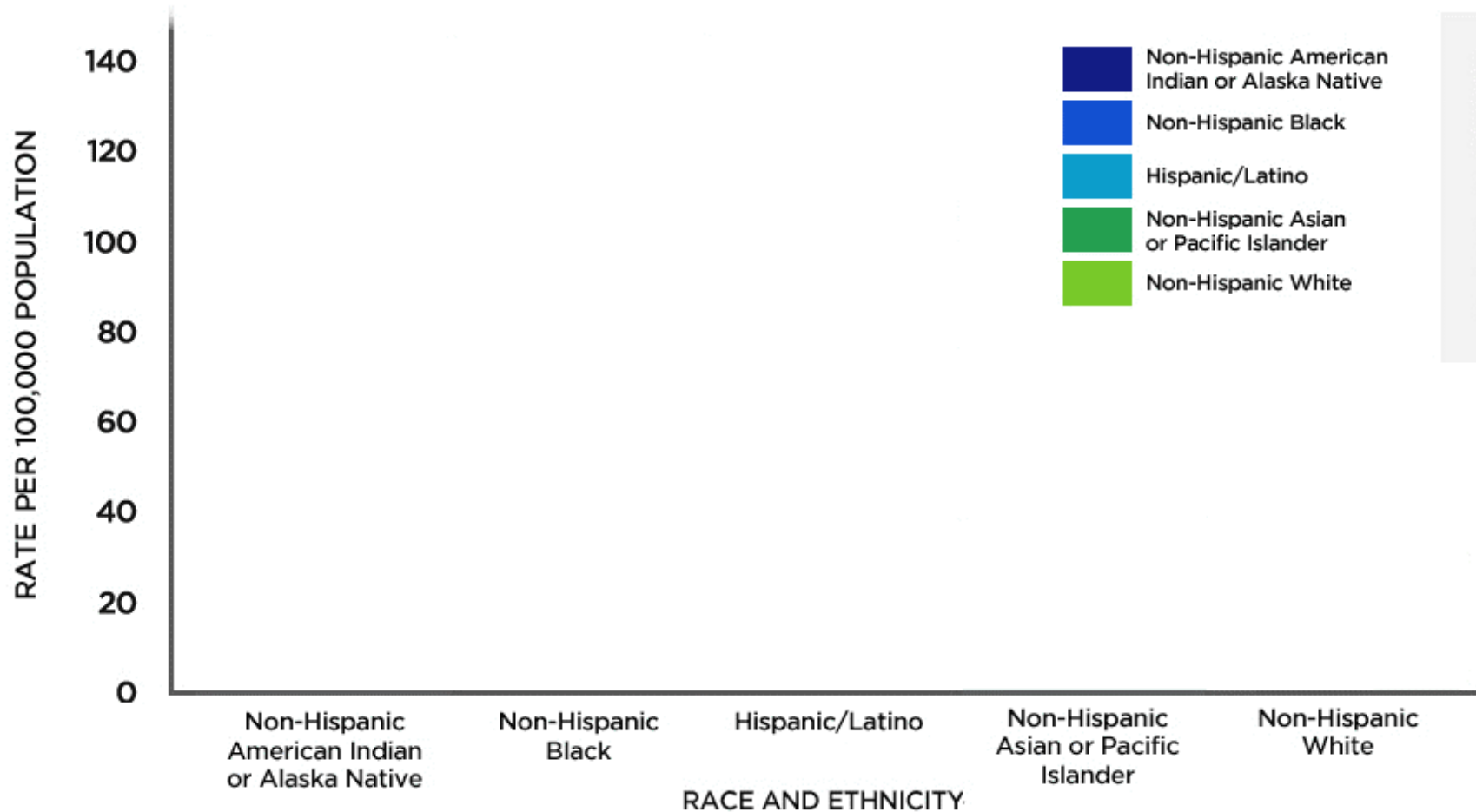
Sources: 2010 Census, respective state/city health departments





# Age-adjusted COVID-19-associated hospitalization rates by race and ethnicity

COVID-NET, MARCH 1 - MAY 23, 2020



COVID-19-associated hospitalization rates are highest among people who are non-Hispanic American Indian/Alaska Native, non-Hispanic Black, and Hispanic/Latino.

[cdc.gov/coronavirus](https://cdc.gov/coronavirus)

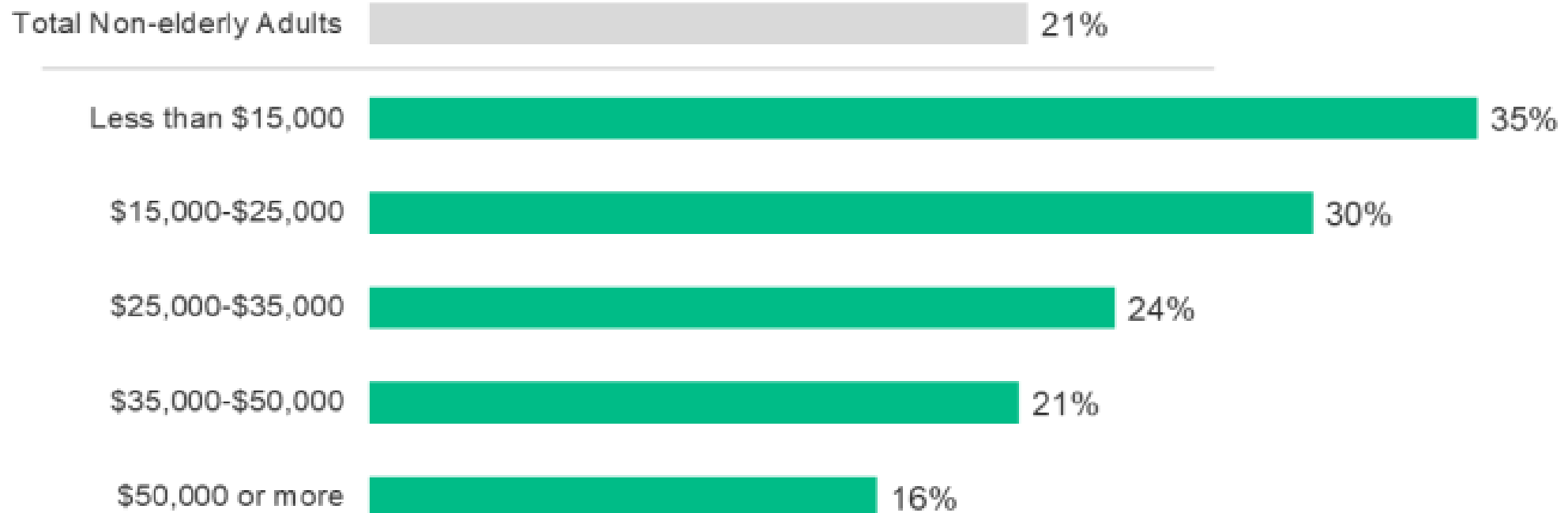
Rates are statistically adjusted to account for differences in age distributions within race and ethnicity strata in the COVID-NET catchment area. Rates are based on available race and ethnicity data which is now complete in 83% of cases from COVID-NET sites. COVID-19-associated hospitalization rates for American Indian and Alaska Natives (AI/AN) may be impacted by recent outbreaks among specific communities within this population and the small numbers of AI/AN cases included in COVID-NET.



# Income Matters

## The Share of Adults Ages 18-64 at Risk of Serious Illness if Infected with Coronavirus is Higher for People with Low Household Incomes

Share of Adults Ages 18-64 at Higher Risk of Serious Illness if Infected with Coronavirus by Household Income:

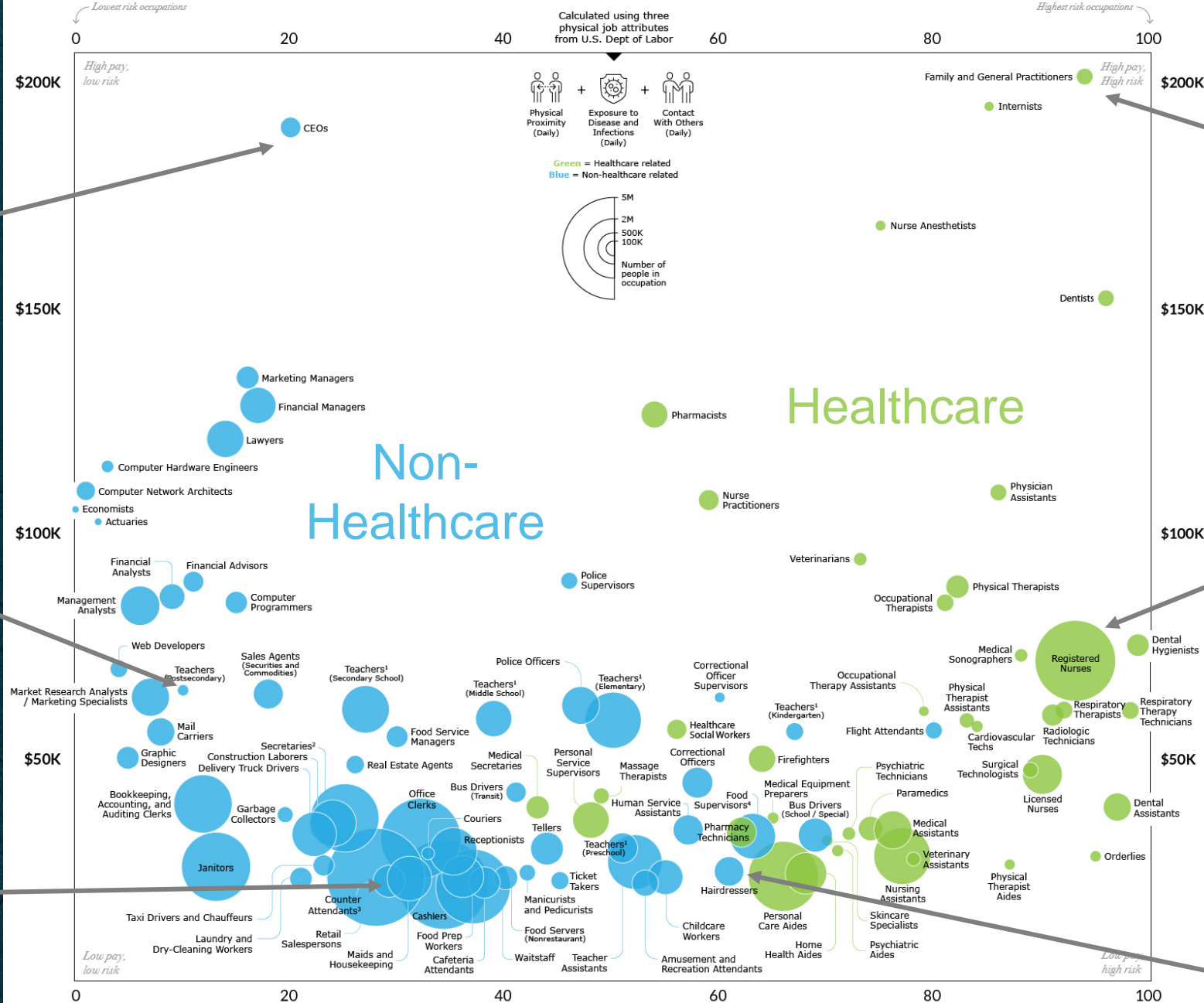


Note: Data includes adults ages 18-64; excludes adults living in nursing homes or other institutional settings.

Source: KFF analysis of 2018 Behavioral Risk Factor Surveillance System.



# COVID-19 Occupational Risk Score



CEO's

Family/General Practitioner

Faculty in Higher Ed

RN's

Retail, Receptionists, Waitstaff

Hairdressers

Source: U.S. Dept of Labor, O\*Net database <sup>1</sup>Excluding special needs <sup>2</sup>Except Legal, Medical, and Executive <sup>3</sup>Cafeteria, Concession, and Caf  <sup>4</sup>Food Preparation and Serving visualcapitalist.com

# Incarceration Matters

## THE IMPACT OF COVID-19 ON INCARCERATED POPULATIONS



JAZMINE SOLORZANO | STAFF

SOURCES: U.S. CENSUS, COOK COUNTY PUBLIC HEALTH DEPARTMENT, LOS ANGELES COUNTY SHERIFF'S DEPARTMENT, LA COUNTY PUBLIC HEALTH DEPARTMENT, ORANGE COUNTY SHERIFF'S DEPARTMENT, ORANGE COUNTY HEALTH CARE AGENCY, THE LEGAL AID SOCIETY, ALAMEDA COUNTY PUBLIC HEALTH DEPARTMENT, ALAMEDA COUNTY SHERIFF'S DEPARTMENT



# Georgia Reopens, April 2020



# Discussion

How do we reopen in an equitable fashion while considering vulnerable populations?





## Break Out Discussions

- You will be randomly grouped with five other people
- You will discuss for about ten minutes
- Please discuss the prompt
- The prompt and announcements will occur in the chat as well as a banner
- Select someone to report out your conversation

# Discussion

How do we reopen in an equitable fashion while considering vulnerable populations?



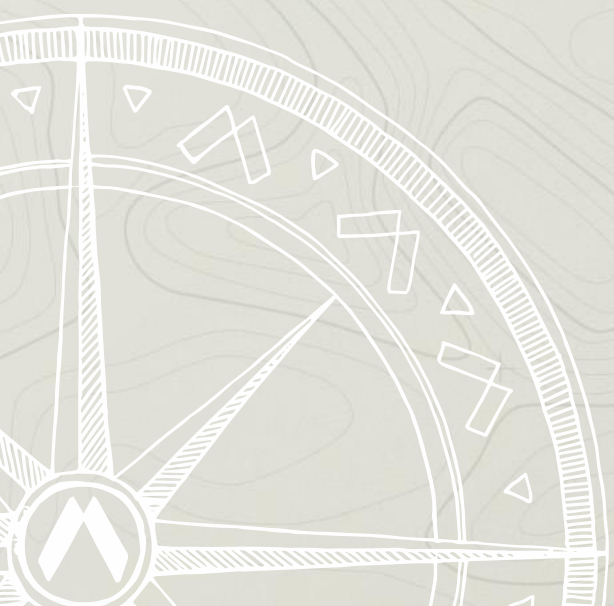
There is clear disproportionate impact on populations of color. These communities are more likely to:

Work at essential, low wage jobs

Experience high unemployment

Have poor access to healthcare

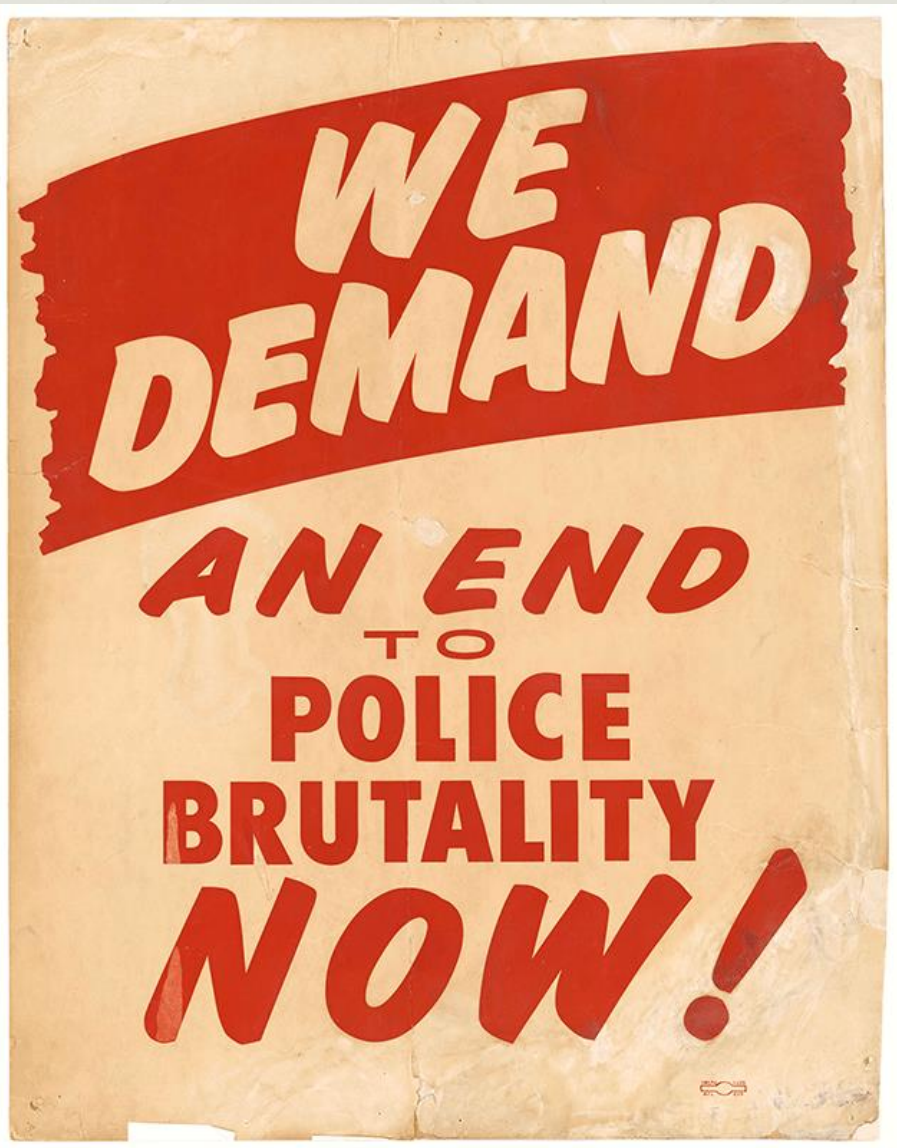
Experience risky co-morbidities



# George Floyd, 1973 - 2020







Poster carried in the 1963 March on Washington.



Alabama, 1965



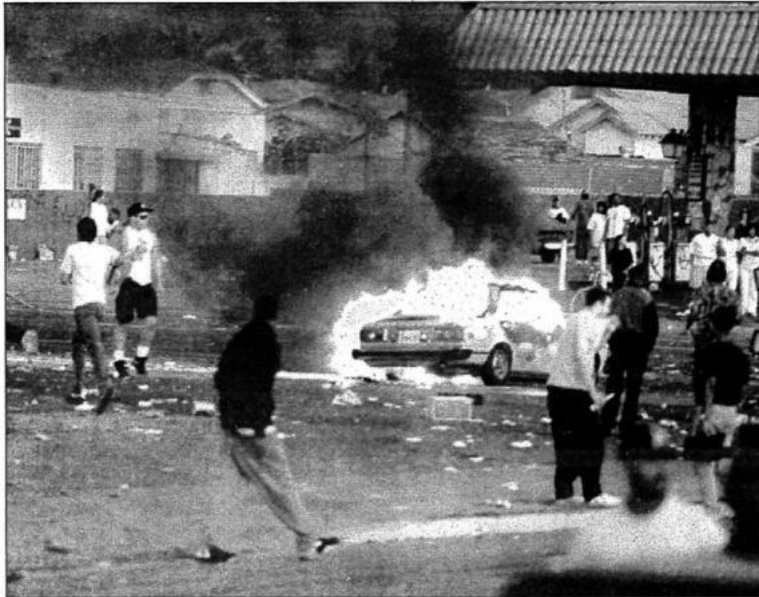
Police disperse a protest with tear gas, 1965.





VERDICT IN VIDEOTAPED BEATING

# L.A. cops acquitted; fires, violence erupt



STREETS OF FIRE: Rioters stand around burning vehicle after violence broke out last night following acquittals of L.A. police officers.

By ROB POLNER

Daily News Staff writer

Los Angeles was rocked by widespread rioting, looting and acts of arson last night after four white cops were acquitted of nearly all assault charges in the videotaped beating of Rodney King, the black motorist who was subdued under a barrage of police batons.

The verdict was an explosive climax to a year of political uproar and national outrage, and the reaction to it prompted Los Angeles Mayor Tom Bradley to declare a state of emergency and request assistance from the Na-

**WINNING IT**  
Creating reasonable doubt  
**ANALYSIS — Page 49**

tional Guard as chaos spread from the city's mostly black south side to the Downtown Civic Center area.

At least one person was dead and 72 injured, the Associated Press reported.

In one of many outbreaks of rage, looters ran wild and motorists were pulled from cars and attacked at an intersection in South Central Los Angeles.

In the downtown Civic Center area, City Hall, the Los Angeles Times building and police headquarters were besieged by chaotic crowds throwing rocks and flares.

Police were ordered to steer clear of some blocks for fear their presence would stoke further violence.

Paramedics reportedly held back for fear for their own safety.

Inner-city hospital emergency rooms were reportedly clogged with injured, including people with gunshot wounds.

Daniel Freeman Memorial Hospital admitted 20 people to the emergency room, with injuries ranging from minor to critical, said spokeswoman Mary Schnack.

**Stunning decision**

The jury issued its stunning decision on the seventh day of deliberations, acquitting the four cops of the most serious assault charges but deadlocking on a single count of excessive force against Officer Laurence Powell.

The defendants embraced relatives and slapped one another on the back.

"Very happy," Powell told reporters. "It's hard to be surprised when you felt that

See KING Page 49

## Rioters take streets

By JAMES ROSEN  
Daily News Staff Writer

Screaming "Justice for Rodney King," angry crowds of 40 to 50 people last night rampaged through large sections of the country's second-largest city.

The violence started in largely black South Central Los Angeles, then spread later to downtown in the area of City Hall. Overturned police cars were in flames across the street from City Hall.

Blacks, whites and Hispanics joined the roving bands, TV news reports said.

Vallee Bunting, a spokeswoman for Mayor Tom Bradley, said one of the buildings at City Hall was set afire.

The Los Angeles Fire Department said 120 blazes were set as rioters torched stores, other businesses and

cars. Bradley said the city fire department could not get to 35 of the fires and had to call on surrounding communities for assistance in battling the blazes.

**Pelted with debris**

Firefighters, some escorted by police, reported being pelted with debris and said they had to leave some fires for their own safety. There were reports of people shooting at fire trucks.

Police Commissioner Jesse Brewer told CNN last night he could see "fires all over the place" from his hillside home in southwestern Los Angeles.

Rioters set cars on fire, hurled stones at passing vehicles and pulled drivers from their autos.

Bradley declared a state of

emergency and requested help from California Gov. Pete Wilson, who agreed to send in 2,000 National Guard troops.

"We regret this violence is escalating," Jesse Jackson told ABC television's "Nightline." "We shall do all we can do to discourage it."

A thousand people demonstrated outside the Los Angeles Police Department's Parker Center headquarters downtown. They stomped on cars, set banners on fire and tried to storm the building.

**Can't keep up**

"We don't have the personnel to keep up with what's happening," Los Angeles police spokeswoman Sharyn Michelson told CNN. "There's so many fires going on right now, so much damage, we

can't stop to get an estimate." Michelson said the department was calling off-duty cops in to work.

In a scene broadcast live on television, a truck driver was pulled from his tractor-trailer rig, beaten and clubbed with a fire iron. Nearby, looters went through a liquor store, gas station and auto parts store.

Men who beat the truck driver raised their hands and smiled.

In another attack, about 25 people stood around as looters pulled a man from a vehicle at the intersection, beat and kicked him.

A man in a white truck had his window smashed and was pulled out of the cab and beaten.

A motorcyclist was seen firing a shotgun at passing cars at the intersection.

In 1992, Rodney King was arrested for drunk driving and savagely beaten by police.

Footage of the brutality was captured by a bystander.

The officers involved were initially acquitted, leading to nation-wide protests.

2013 - Present

**BLACK**

**LIVES**

**MATTER**

Trayvon Martin

Michael Brown

Eric Garner

Freddy Gray

Philando Castile



2013 - Present

**BLACK  
LIVES  
MATTER**

**Who is missing?**

Breonna Taylor

Riah Milton

Dominique “Rem’mie” Falls

**#SayHerName**

**Trans Lives Matter**

Racist Housing Segregation

Health Disparities

Racist Economic  
Policies



Racist Healthcare  
Systems

Racist Police  
Brutality

COVID-19



# Philadelphia, June 2020





# Philadelphia, June 2020





# Philadelphia, June 2020











## Redefining the Unacceptable

“The landmarks of political, economic and social history are the moments when some condition passed from the category of the given into the category of the intolerable...The history of public health might well be written as a record of successive redefinings of the unacceptable.”

Geoffrey Vickers, Secretary, Medical Research Council, Great Britain, 1958

# Discussion

In your group...

Brainstorm and record a list of “things” affecting the public’s health that have passed from tolerable (accepted) to intolerable (unaccepted).

Include items that you wish would become unacceptable



What kind of future can you imagine that addresses inequities for our:

Aging population?

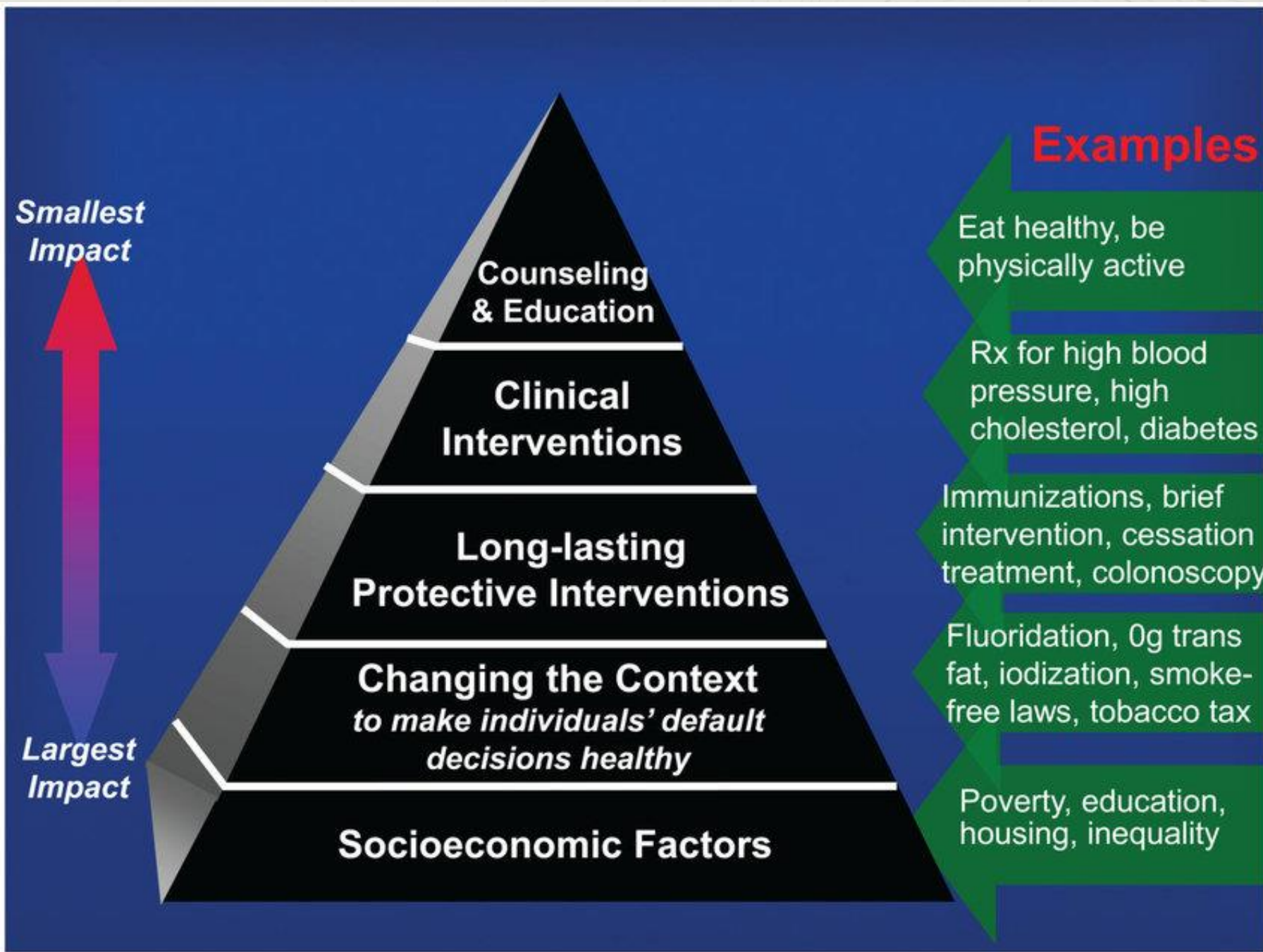
Incarcerated population?

Black and Native populations?

Essential low-wage workforce?



*Explorers are Never Lost*



Health is rooted in social, political and economic structures.