

Joint *PopTalk* Webinar

Healthcare's New Diagnosis: Poverty (Z59.5) A Standard of Care to Treat the Social Determinants of Health

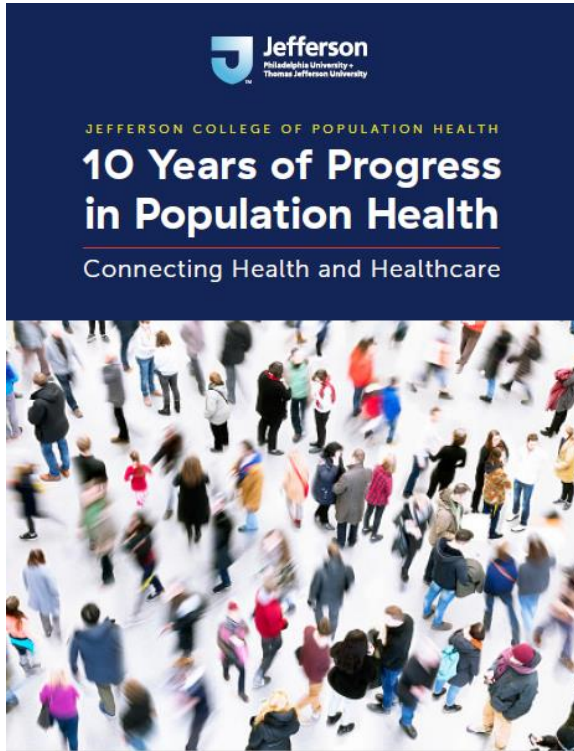
November 18, 2020



Mitchell Kaminski, MD, MBA
MJ Osmick, MD
Marcella Wilson, PhD



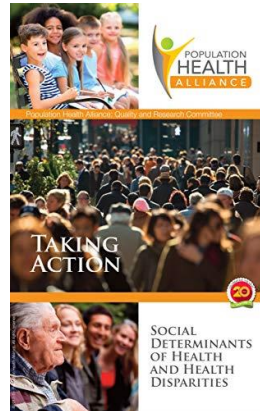
Jefferson College of Population Health



To prepare leaders with global vision to *develop, implement* and *evaluate* health policies and systems that improve the health of populations and thereby enhance the quality of life



Population Health Alliance (PHA) is the industry's only multi-stakeholder professional and trade association solely focused on population health, representing stakeholders from across the health care ecosystem that seek to improve health outcomes, optimize medical and administrative spend and drive affordability.



Mary Jane Osmick MD | Consulting



JOIN PHA TODAY

"TOGETHER, through a collective mission, we can **IMPROVE LIVES** — AFFORDABLY and **SUSTAINABLY**."

- Rose Maljanian, PHA Board Chair

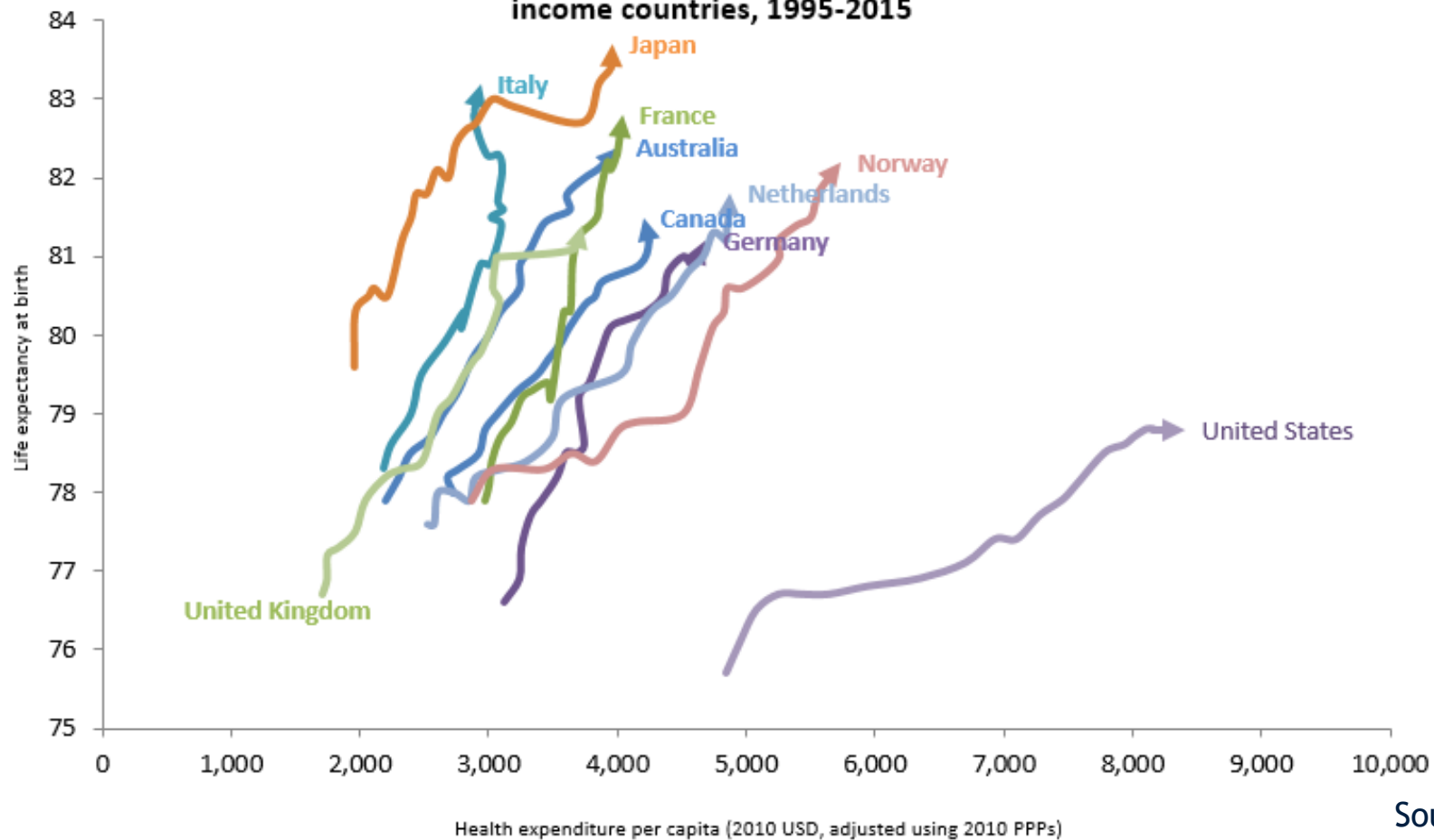
JOIN HERE >

Advance Your Population Health Management Practice!
Organization and Professional Memberships Available
bling@populationhealthalliance.org or 202.737.5476

What has become more evident as we've studied population health?

- Our healthcare system is broken (we pay more for inferior outcomes)
- Healthcare disparities, defined through social determinants of health, underlie our failure
- The Covid-19 Pandemic has highlighted the disparities, and the failure of our public health system and systems for health and health care
- Increasingly, poverty is being seen through a new lens, which we will learn more about today.

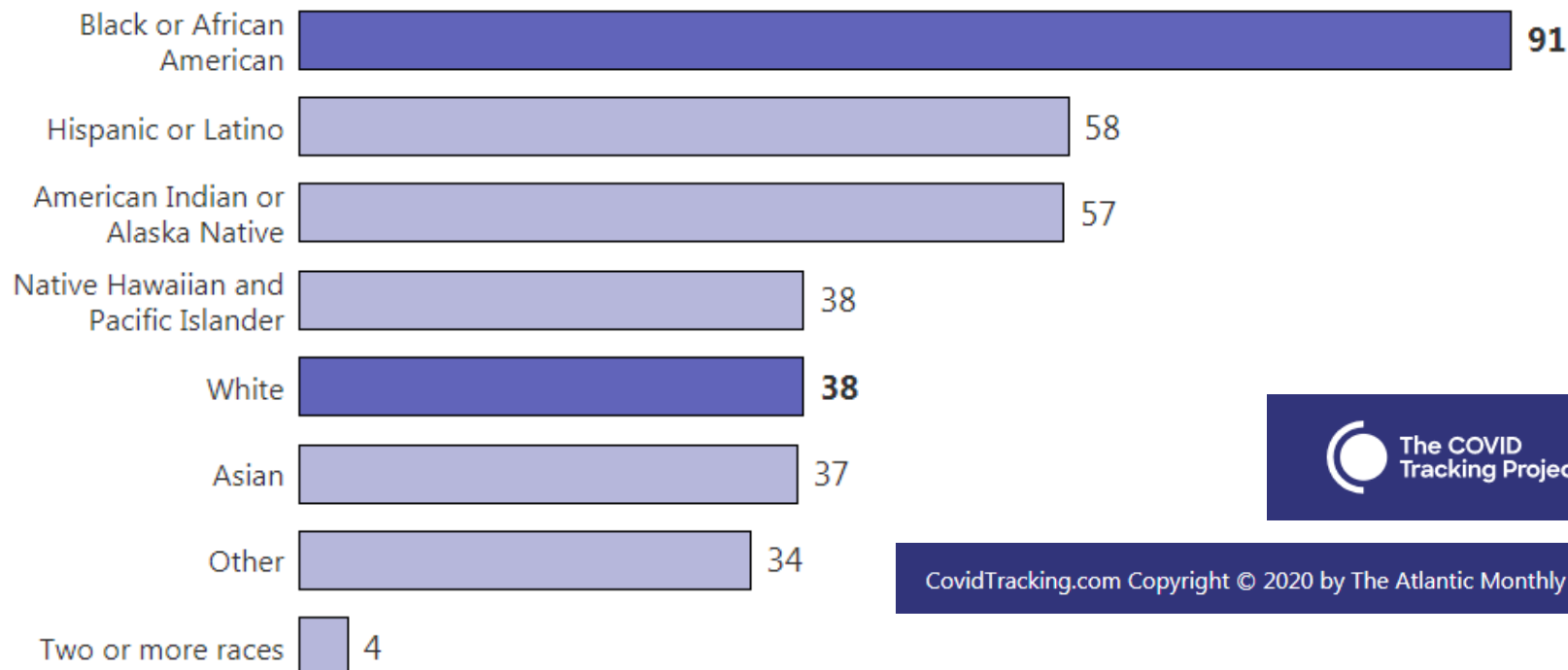
Figure 2.6. Life expectancy gains and increased health spending, selected high-income countries, 1995-2015



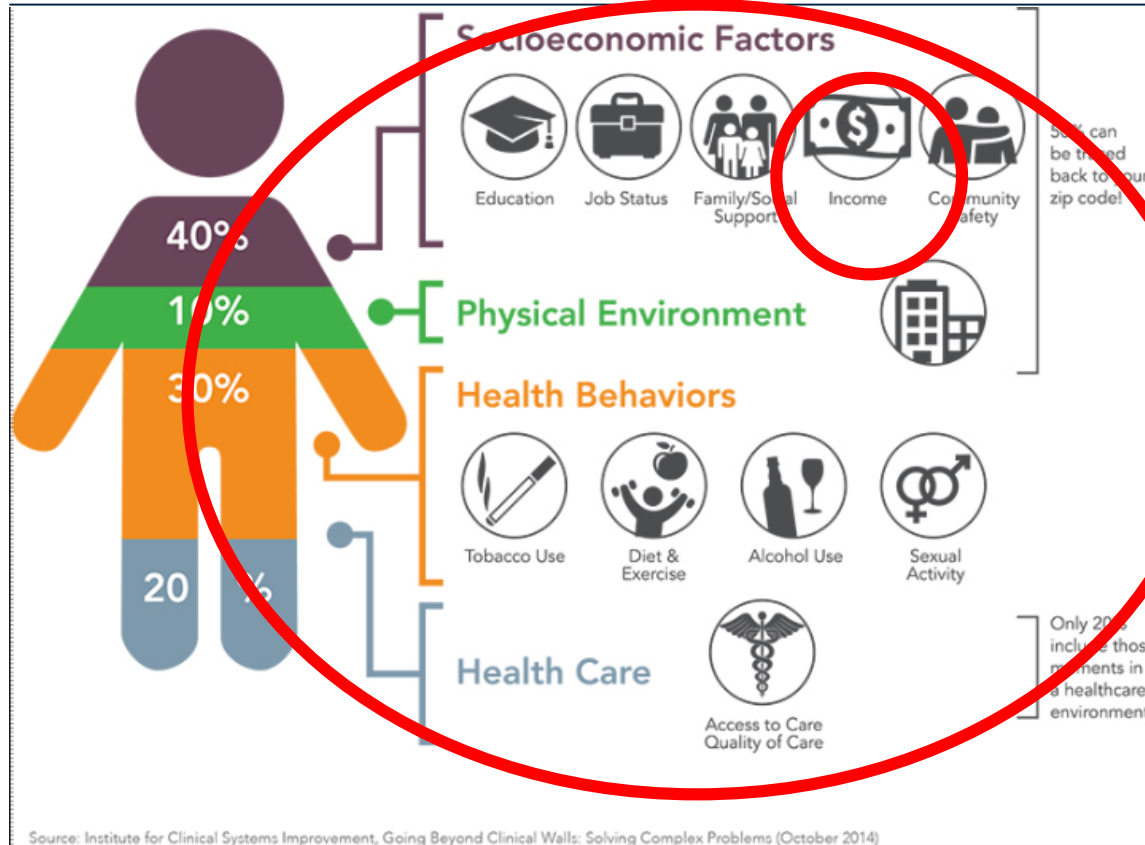
Source: OECD

Nationwide, Black people are dying at 2.4 times the rate of white people.

Deaths per 100,000 people by race or ethnicity



What Affects Health?



Today's Presenters



MJ Osmick, MD
*Physician and
Clinical Consultant*



Marcella Wilson, PhD
*CEO and Founder
Transition To Success™, LLC*







Financial Wellbeing

- **Control over day-to-day, month-to-month finances**
 - Enough money to get by and not to worry
 - Pay bills on time, cover expenses
- **Capacity to absorb a financial shock**
 - Has a safety net such as savings, insurance, or family to help from shock turning into lasting setback
- **On track to meet financial goals**
 - Moving toward financial freedom
- **Has the financial freedom to make the choices that allow enjoyment of life**
 - Family vacations
 - Going out to eat
 - Working less to spend time on what they value
 - What makes them happy

How much do Americans have to cover Emergency Savings?

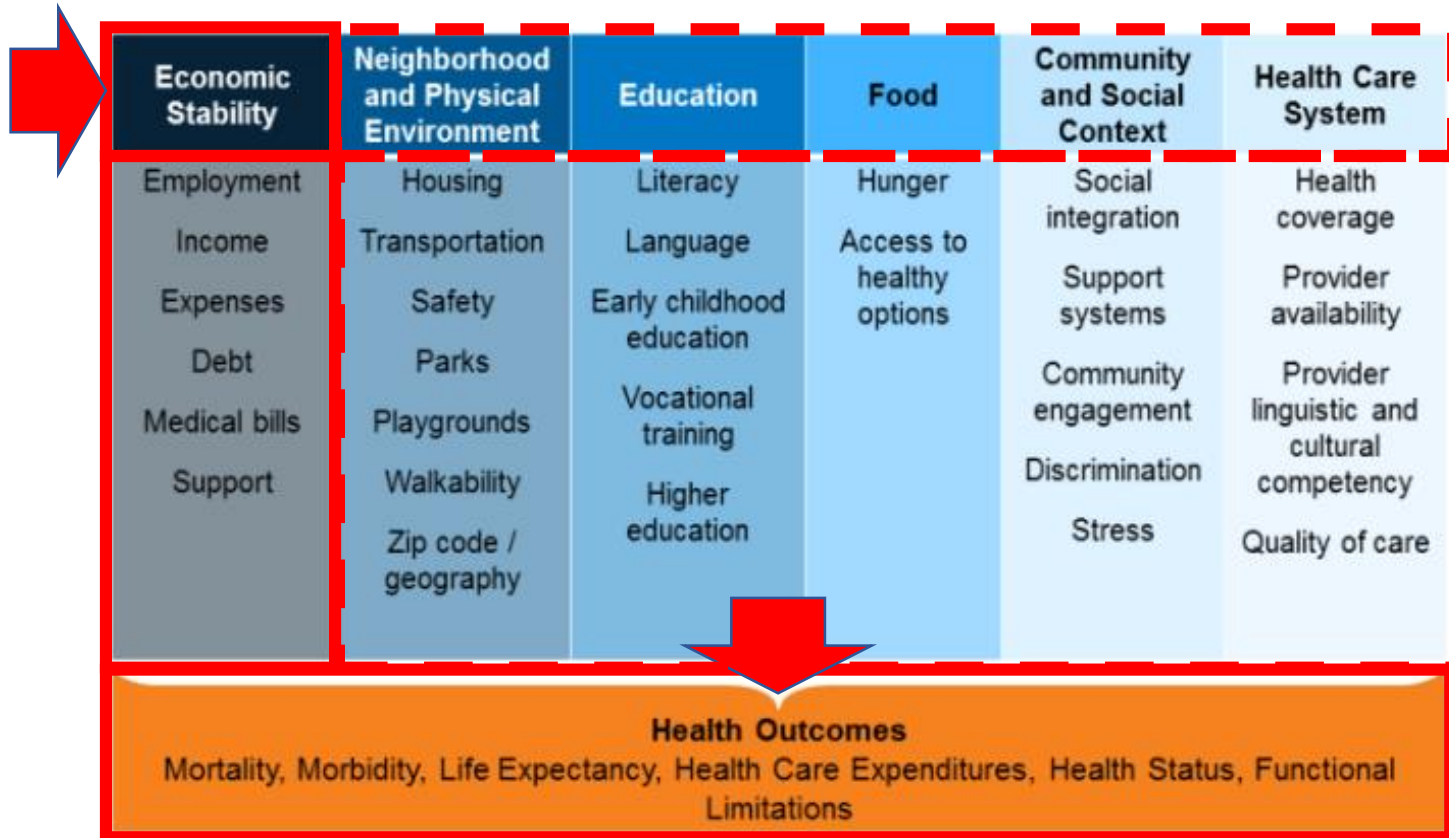


Note: 8% responded "don't know/refused."

Source: Bankrate's Financial Security Index, June 6-10, 2018

Bankrate

Economic Stability – a Core Predictor of Health Outcomes



2020 POVERTY GUIDELINES FOR THE 48 CONTIGUOUS STATES AND THE DISTRICT OF COLUMBIA

PERSONS IN FAMILY/HOUSEHOLD

POVERTY GUIDELINE

For families/households with more than 8 persons, add \$4,480 for each additional person.

1 **\$12,760**

2 \$17,240

3 \$21,720

4 \$26,200

5 \$30,680

6 \$35,160

7 \$39,640

8 \$44,120

2020 Poverty Guidelines for 48 Contiguous States and District of Columbia

Poverty Guidelines - used for program eligibility for Head Start, Supplemental Nutrition Assistance Program (SNAP), National Lunch Program, Low-Income Home Energy Assistance Program, and Children's Insurance Program (CHIP).

Cash public assistance programs (TANF, and SSI) and Earned Income Tax Credits do not use Poverty Guidelines.

<https://aspe.hhs.gov/poverty-guidelines>

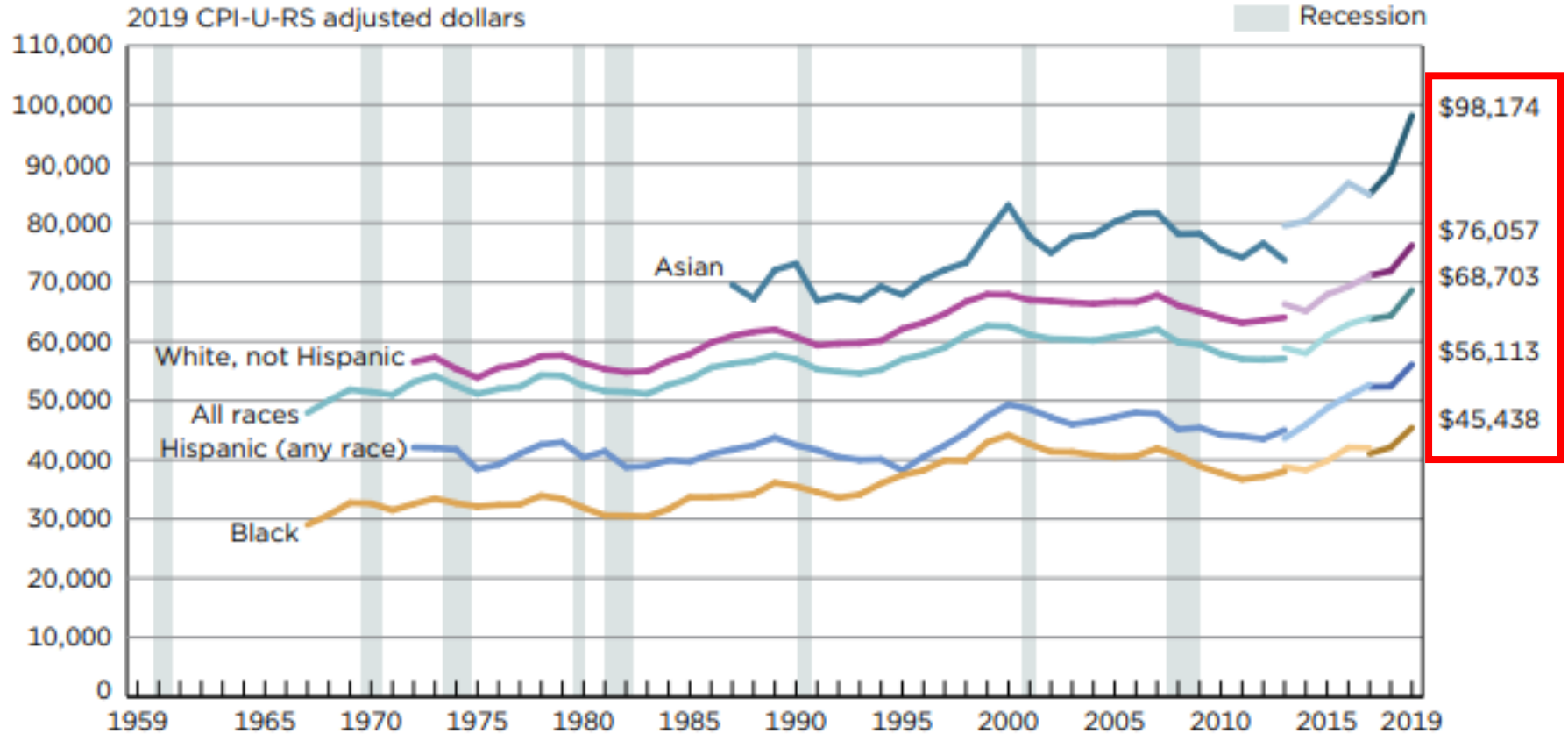
U.S. Official 2019 Poverty/Wealth Statistics

- Poverty rates have fallen for 5 consecutive years
- Current rate – 10.5% or 34 million Americans
 - 56% women - 2/3 white
 - 42% - South; 23% - West; 19% - Mid West
 - 32% were children or 12.8 million under 18 years
 - 12% or 4.7 million were 65 years or older
 - 9% were disabled
 - 6% were full-time employees
- Poverty and common mental health diagnoses closely linked – 2x more prevalent among low-income groups

1. Federal Poverty Threshold - How the Feds Measure Poverty – Kimberly Amadeo – June 25, 2019 <https://www.thebalance.com/federal-poverty-threshold-3305793>
2. WHO. “The WHO MIND Project: Mental Improvement for Nations Development”, Dept of Mental Health and Substance Abuse, Geneva, https://www.who.int/mental_health/policy/development/1_Breakingviciouscycle_Infosheet.pdf

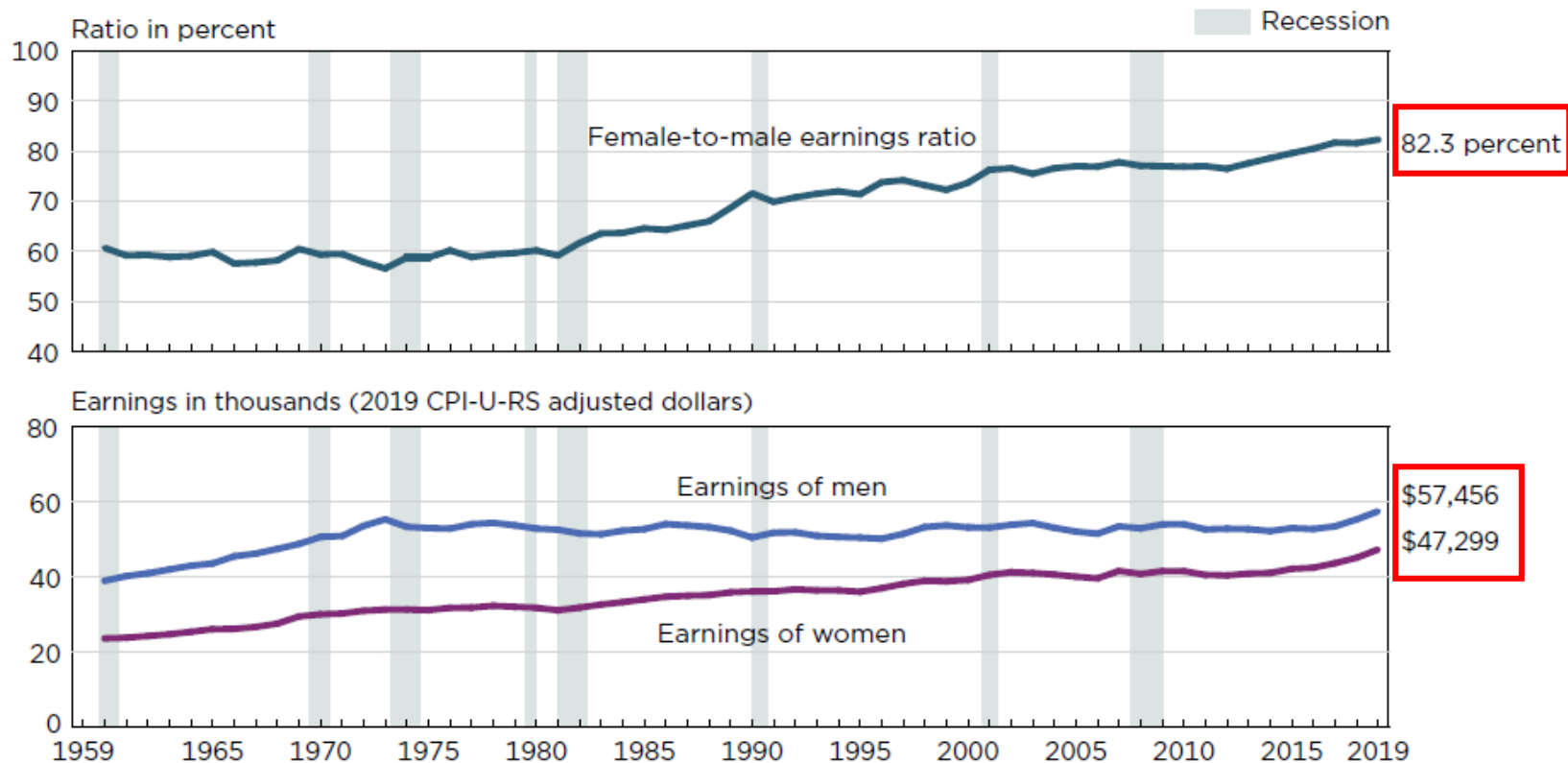
Real Median Household Income by Race and Hispanic Origin: 1967 to 2019

(Households as of March of the following year)



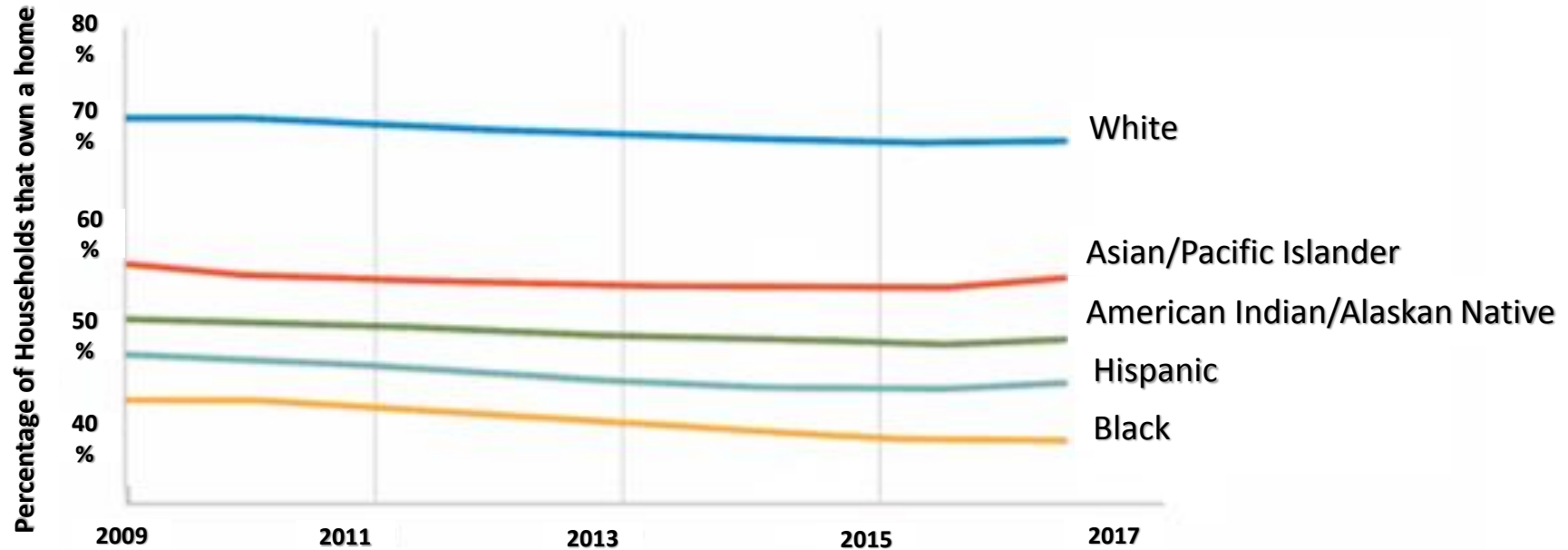
Female-to-Male Earnings Ratio and Median Earnings of Full-Time, Year-Round Workers 15 Years and Older by Sex: 1960 to 2019

(People as of March of the following year)



Reference: Semega, J. et al "Income and Poverty in the United States: 2019 Current Population Reports; Available at: <https://www.census.gov/content/dam/Census/library/publications/2020/demo/p60-270.pdf>

Trends in Homeownership by Race/Ethnicity in Large Urban and Smaller Metro Counties



Treatment Defined

- “The use of an agent, procedure or regimen such as a drug, surgery or exercise in an attempt to cure or mitigate a disease, condition or injury”

American Heritage medical Dictionary 2007

- “A generic, nonspecific term for healthcare which is intended to relieve illness, injury, mental problems etc.”

Segen’s Medical Dictionary 2012

- “A therapy intended to stabilize or reverse a morbid process”

McGraw-Hill Concise Dictionary of Modern Medicine 2002

The Questions:

- 1. Can Poverty be “treated”?**
- 2. If so, how?**



Marcella Wilson, PhD

CEO and Founder

Transition To Success™, LLC

Mwilson@TTS-LLC.org

www.TransitionToSuccess.org

**“Like slavery and apartheid,
poverty is not natural.
It is man-made, and it can be
overcome and eradicated by the
actions of human beings.”**

- Nelson Mandela

The Medical Model Understanding and Treating Disease

A uniform system of industrywide standards and analytics with continuous quality improvement (CQI)

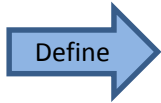
Research Evaluation, Meta-analysis
CQI *



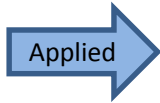
(e.g., diabetes, asthma, cancer)



Evidence-based



Condition-specific Standards of Care (National Quality Forum establishes measures and analytics)



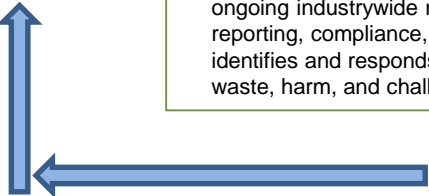
Industrywide



Training

Implementation

* Condition-Specific: Continuous Quality Improvement (CQI) ensures ongoing industrywide measurement, reporting, compliance, and outcomes. CQI identifies and responds to opportunities, waste, harm, and challenges.



Data Collection



Treating Poverty in America

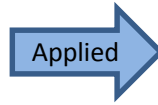
Poverty- related



Research,
Evaluation, and
Meta-analysis



Evidence- based



- Client self-navigation
- Practitioner preference
- Organizational preference

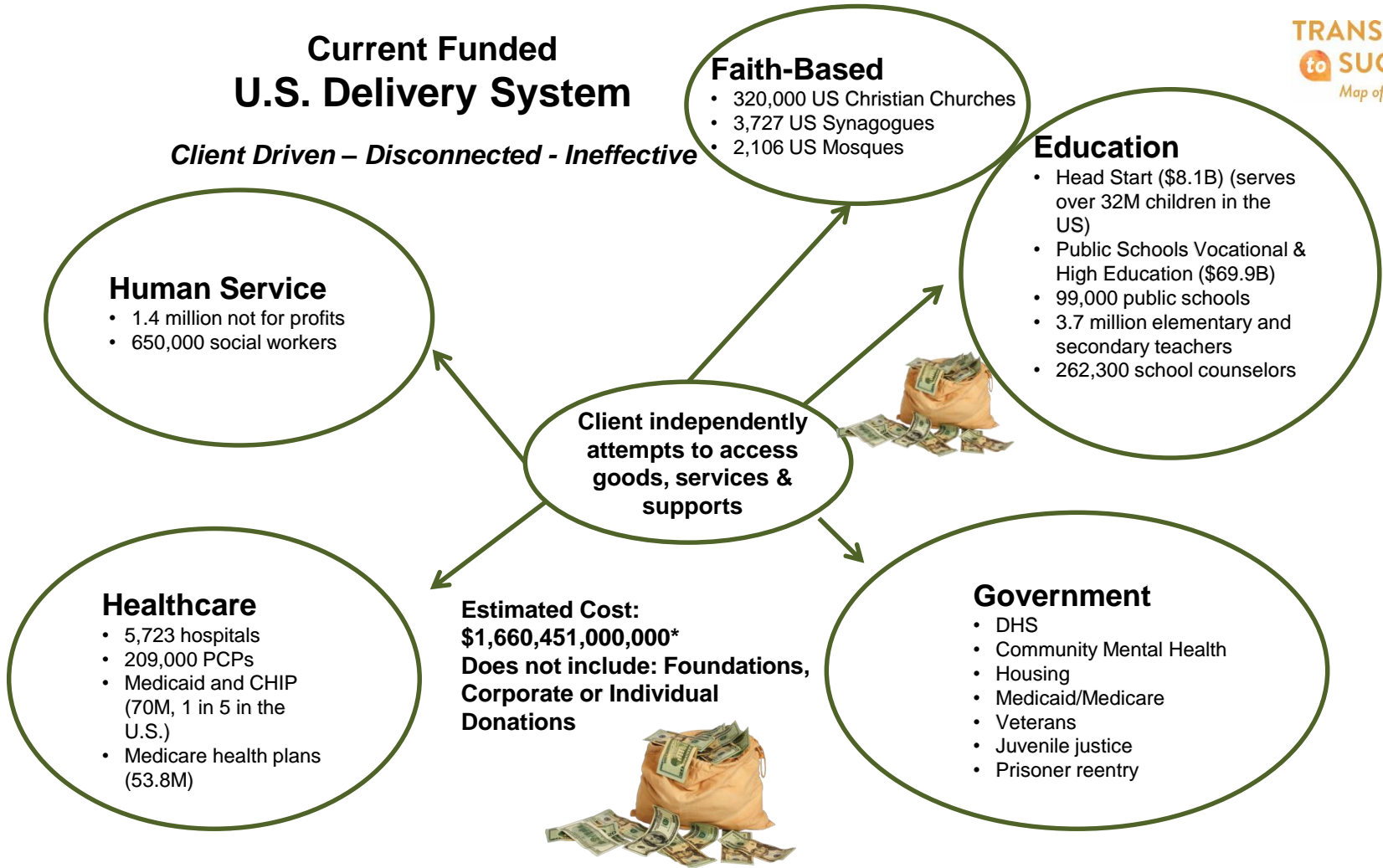
**No comprehensive,
cross-industry,
interdisciplinary,
uniform analytics
to support CQI ***



* **Condition-specific: Continuous quality improvement (CQI)** ensures ongoing industrywide measurement, reporting, compliance, and outcomes. CQI identifies and responds to opportunities, waste, harm, and challenges.

Current Funded U.S. Delivery System

Client Driven – Disconnected - Ineffective



Human Service

- 1.4 million not for profits
- 650,000 social workers

Faith-Based

- 320,000 US Christian Churches
- 3,727 US Synagogues
- 2,106 US Mosques

Education

- Head Start (\$8.1B) (serves over 32M children in the US)
- Public Schools Vocational & High Education (\$69.9B)
- 99,000 public schools
- 3.7 million elementary and secondary teachers
- 262,300 school counselors

Client independently attempts to access goods, services & supports

Healthcare

- 5,723 hospitals
- 209,000 PCPs
- Medicaid and CHIP (70M, 1 in 5 in the U.S.)
- Medicare health plans (53.8M)

Estimated Cost:
\$1,660,451,000,000*
Does not include: Foundations, Corporate or Individual Donations

Government

- DHS
- Community Mental Health
- Housing
- Medicaid/Medicare
- Veterans
- Juvenile justice
- Prisoner reentry

(* Federal Office of Management and Budget, <http://febp.newamerica.net/background-analysis/education-federal-budget>).

National Poverty Level



Health Disparities for Those Living in Poverty

Poverty status is based on Gallup's best estimate of those in poverty, according to the U.S. Census Bureau's 2011 thresholds

	Percentage with Disease in Poverty	Percentage with Disease Not in Poverty	Difference (percentage points)
Depression	30.9	15.8	15.1
Asthma	17.1	11.0	6.1
Obesity	31.8	26.0	5.8
Diabetes	14.8	10.1	4.7
High blood pressure	31.8	29.1	2.7
Heart attack	5.8	3.8	2.0
Cancer	6.3	7.1	-0.8
High cholesterol	25.0	26.0	-1.0

Treating Environmentally-Based, Industry-Accepted Medical Conditions*

Environmental Exposures	Symptoms	Diagnosis	Standard of Care	Billable
Lead ingestion	Irritability, high blood pressure, long-term neurological damage	Lead poisoning	Required	✓
Asbestos	Trouble breathing, nausea, vomiting	Cancer/ Mesothelioma	Required	✓
Pollution	Difficulty breathing, decrease in lung function, wheezing	Asthma/COPD	Required	✓
Social Determinants of Health Food insecurity, high crime rates, inadequate/unaffordable housing, lack of access to basic needs/resources, limited access to quality healthcare, poorly performing schools, racism, and unemployment, transportation	Increased rates of diabetes and blood pressure, infant and maternal mortality, increased depression and mental health disorders, asthma, compromised immune system and brain development, higher death rates	Extreme Poverty (ICD 10 Z59.5) Homelessness (ICD 10 Z59.0) Lack of adequate food or safe drinking water (ICD 10 Z59.4) Low Income (ICD 10 Z59.6)	Transition To Success (TTS): Screening & CARE (Coordinating All Resources Effectively)	Behavioral Health and Substance Abuse. Billable CPT Codes for Medicaid, Medicare and Third Party

* **Note:** Recognized disease without genetic predisposition

Transition To Success®

Commonly Used Diagnostic Codes

Behavioral Health Screening / Interviews

- 96146 A single test administered by computer.
Can be emailed prior to appointment.
• Must be reviewed by a physician/qualified health professional.
- 96130 Up to 60 minutes for evaluation of results, documentation on report, treatment plan and feedback.
• If any questions are answered “yes” then the M.I.N.I. Interviews should be conducted.
- 96136 At least 2 tests administered by a physician/qualified health professional (30 minutes or less).
• M.I.N.I. Interviews should be conducted.

Commonly Used Behavioral Health Codes with People living in poverty

- 309.0 Adjustment disorder with depressed mood
- 309.24 Adjustment disorder with anxiety
- 309.28 Adjustment disorder with mixed anxiety and depressed mood
- 309.3 Adjustment disorder with disturbance of conduct
- 309.4 Mixed disturbance of emotions and conduct
- 309.9 Unspecified adjustment disorder
- 300.4 Dysthymic disorder

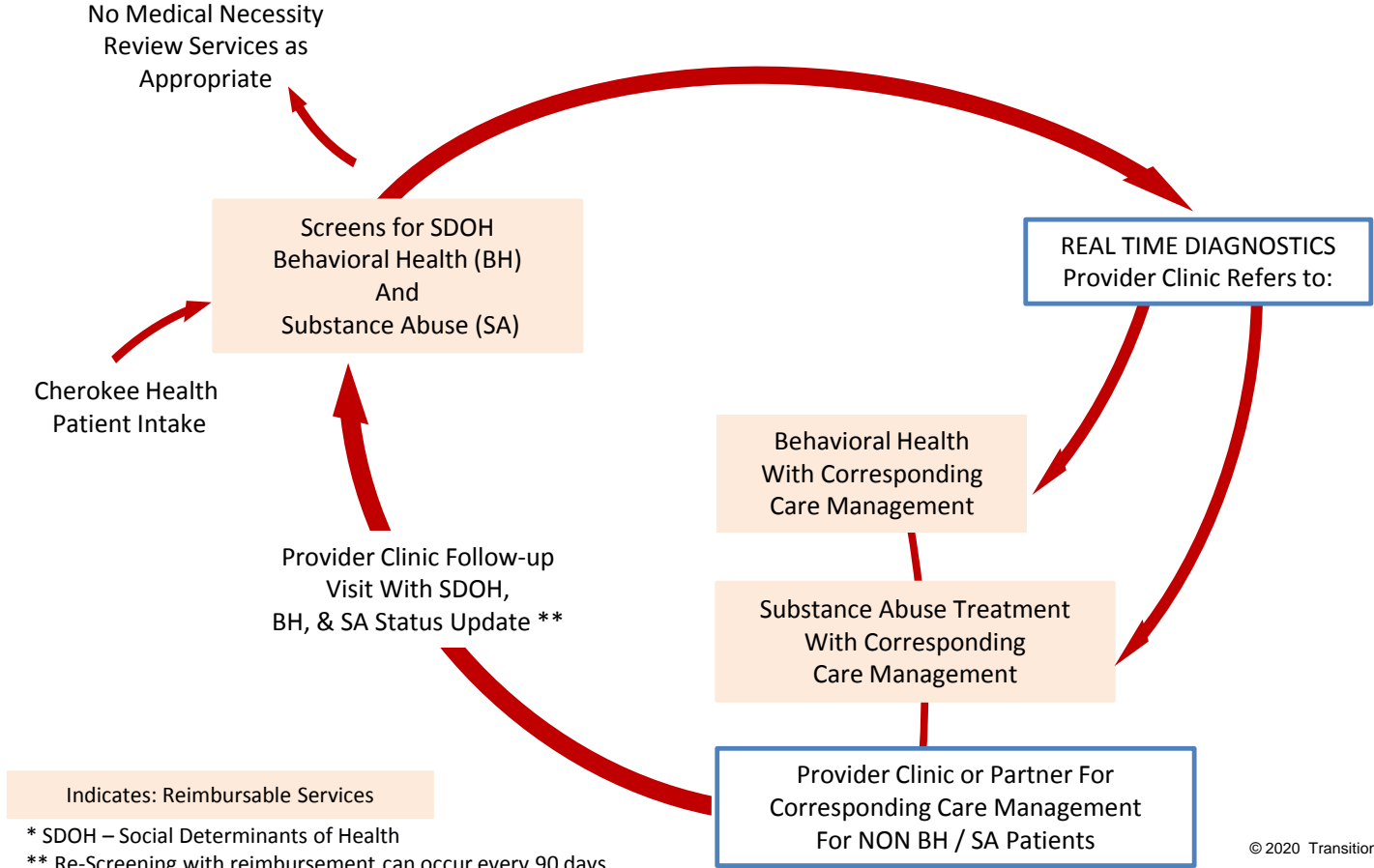
Applicable DSM Z-Codes

- Z59.0 Homelessness
- Z59.1 Inadequate housing
- Z59.5 Extreme poverty
- Z59.7 Insufficient social insurance or welfare support
- Z59.4 Lack of adequate food or safe drinking water
- Z59.6 Low income
- Z60.2 Problem related to living alone
- Z59.3 Problem related to living in a residential institution
- Z59.2 Discord with neighbor, lodger, or landlord
- Z59.9 Unspecified housing or economic problem
- Z63.0 Relationship distress with spouse or intimate partner
- Z65.4 Victim of crime
- Z60.9 Unspecified problem related to social environment
- Z65.9 Unspecified problem related to unspecified psychosocial circumstances
- Z75.4 Unavailability or inaccessibility of other helping agencies
- Z75.3 Unavailability or inaccessibility of healthcare facilities

**Medicare:
CPT 99490: Chronic
Care Management
(CCM)**

Transition To Success

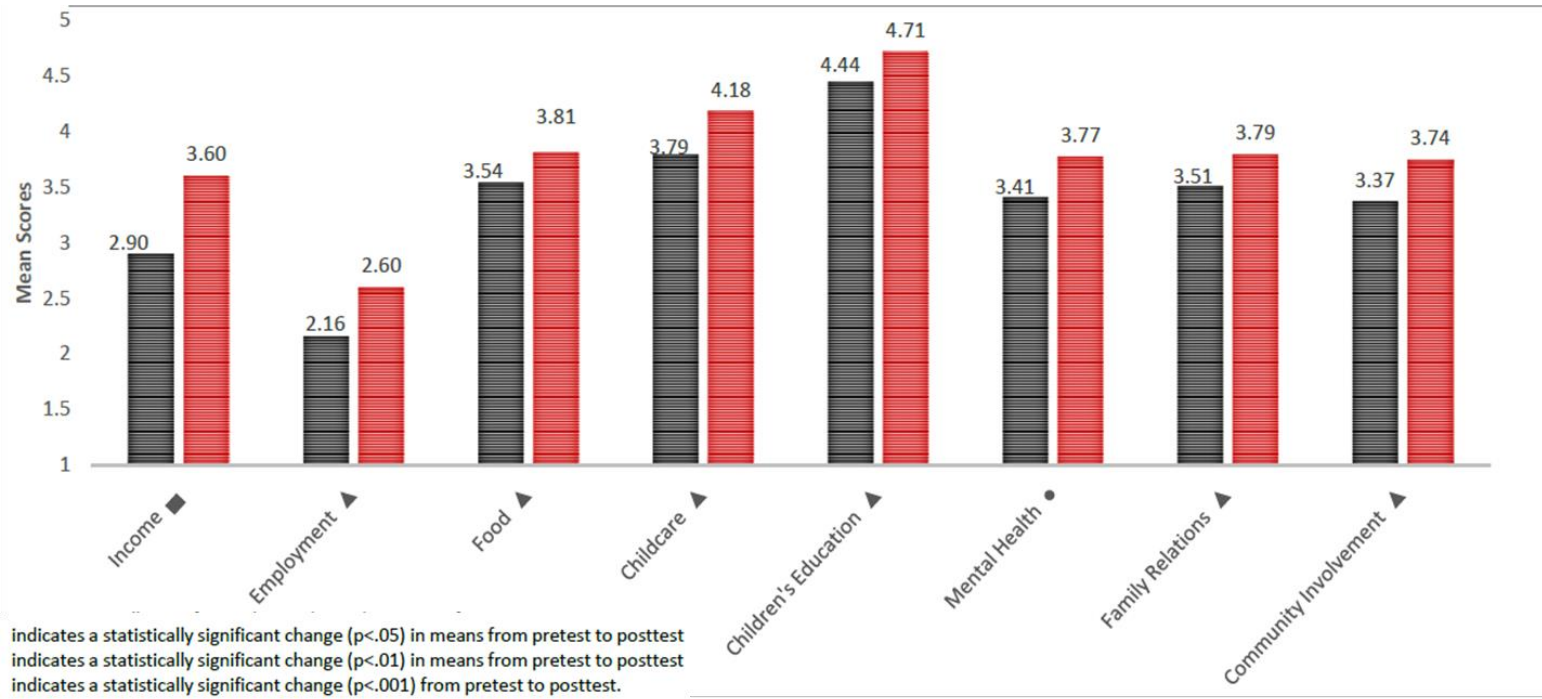
Integration of Social Determinant Screenings Primary and Specialty Care



TTS Independent Evaluation Results

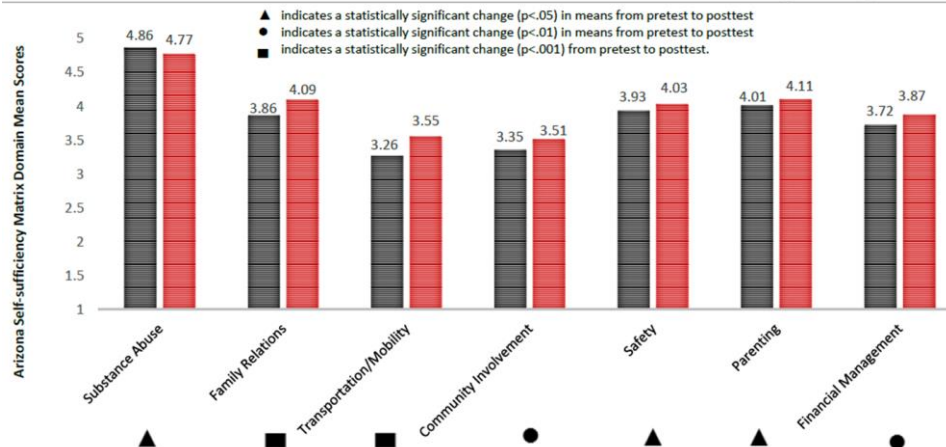
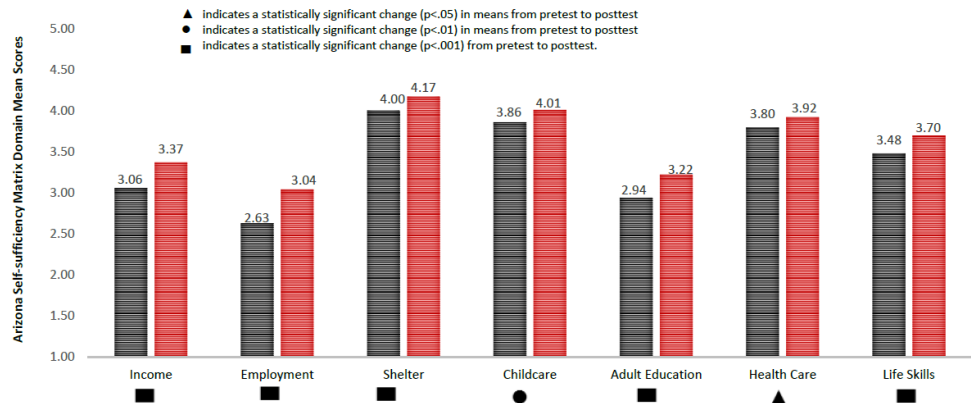
TTS Independent Evaluation Family Service of Detroit and Wayne County (FSDWC)

SDWC: SSM Domains with a Significant Change in Mean Scores from Pre-test (January 2013-February 2014) to Post-test (November 2013-April 2014)



TTS Independent Evaluation Results

Detroit Head Start: Winter 2014 to Spring 2015



TTS Independent Evaluation Results

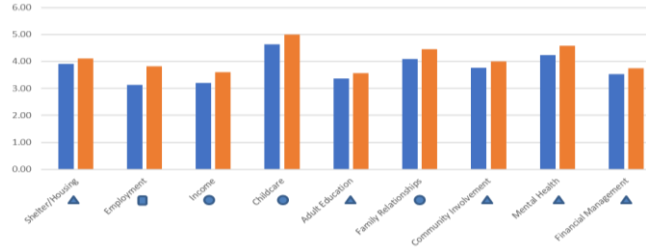
At Child & Family Service, Hawaii:

Year End Evaluation of Pilot Implementation of Transition To

Success[®] Fall 2016 Spring 2018

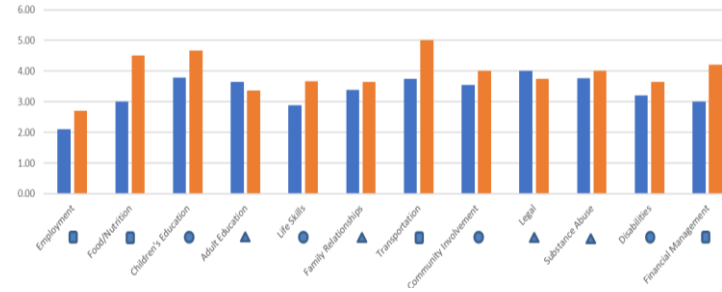
Hale Ho'omaluu Family Center and Head Start Kauai

- Head Start - 20 Month Study
- No new funding
- Statistically significant change in 9 of 18 domains



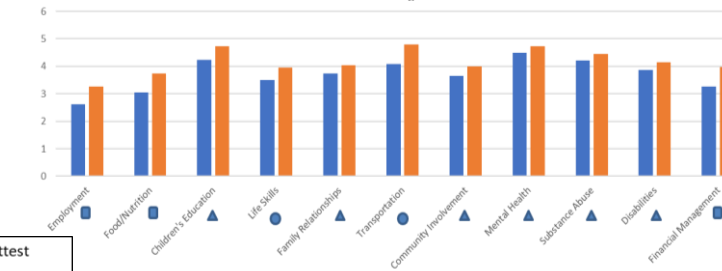
Neighborhood Place Wailuku Molokai Integrated Services Systems - Maui

- Human Service - 20 Month Study
- No new funding
- Statistically significant change in 12 of 18 domains



Hawaii Statewide

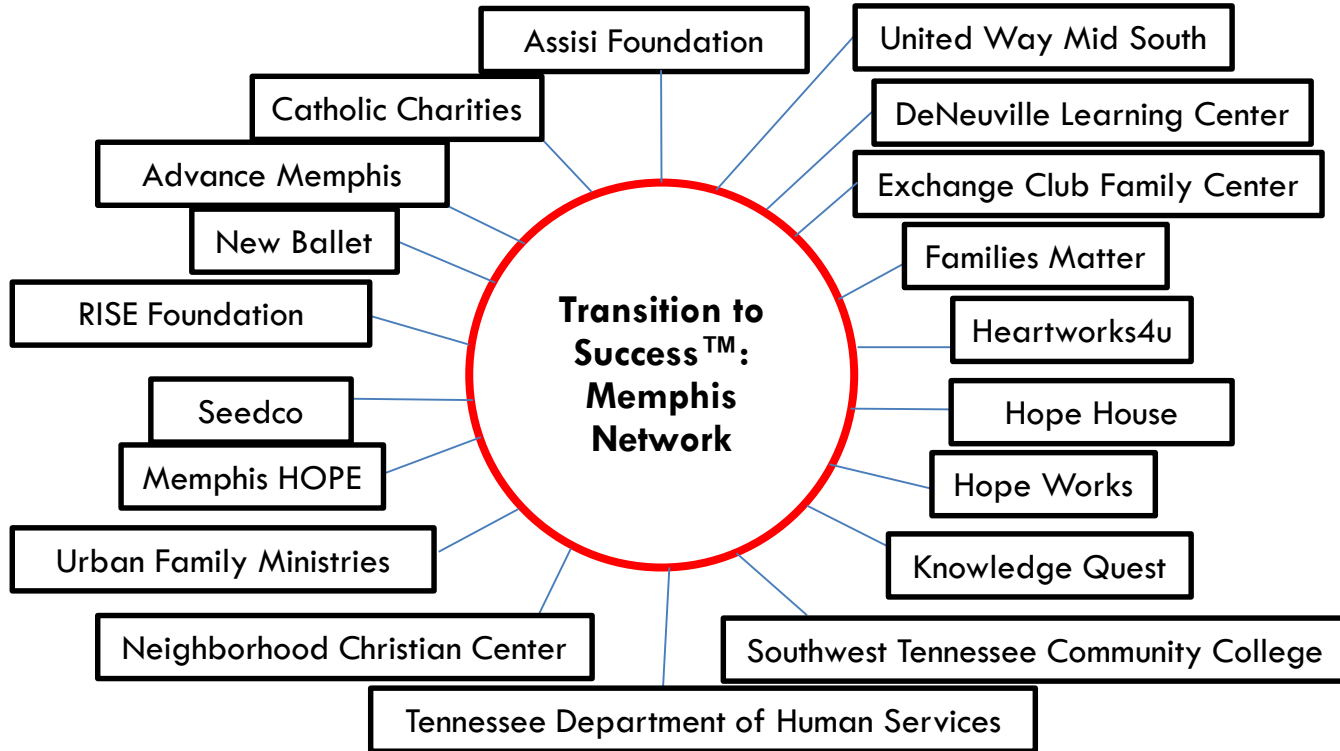
- 20 Month Study – Children & Family Services Statewide
- No new funding
- Statistically significant change in 11 of 18 domains



SAS Services, LLC (SAS) was contracted by Child and Family Service and Goodwill Hawai'i to evaluate of the pilot implementation of Transition-To-Success (TTS) model on Maui and Kaua'i.

▲ p<.05 in means from pretest to posttest
● p<.01 in means from pretest to posttest
■ p<.001 from pretest to posttest

The Power of One – TTS Memphis



- **A New Paradigm:**
 - Poverty is a treatable condition – Not a character flaw.
 - Poverty is caused by environmental exposures Social Determinants of Health (SDoH)
- **Real Treatment:** Integration of SDoH screening with uniform, evidenced based protocols and consistent measures across health, human services, government, education and faith-based services.
- **CARE Plan:** Coordinating All Resources Effectively, SDoH screening, referral identification, mapping.
- **Recognized:** As a Clinton Global Initiative.
- **Pilots:** MI, WI, HI, TN & LA.
- **5 Independent evaluations:** All with statistically significant outcomes.

Thank you!

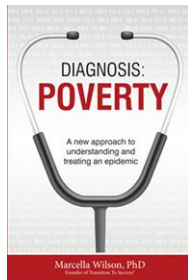


"A little less conversation... a little more action"

[https://www.lyrics.com/artist/Elvis Presley/5175](https://www.lyrics.com/artist/Elvis%20Presley/5175)

Elvis Presley

Be The Power of One . . .



Check out my book:

www.DiagnosisPoverty.com

Marcella Wilson, Ph.D.

MWilson@TTS-LLC.org

www.TransitionToSuccess.org

(313) 580-2672

Q & A



Jefferson
Thomas Jefferson University

**College of
Population
Health**

- 15% discount on tuition for JCPH online graduate degree programs
- Registration discount for JCPH's Population Health Academy
- Special registration rate for Annual Population Health Colloquium

Visit [Jefferson.edu/PHA](https://jefferson.edu/PHA)



- 25% discount on first year of PHA organizational or professional membership

**Email
staff@populationhealthalliance.org**

Complete a graduate certificate in 1 year
or Master's degree in 2 years

Population Health (PopH)

is a new academic and professional field that draws upon diverse disciplines to transform the delivery of health services.

Health systems in the U.S. and around the world are shifting from volume to value. Population health professionals are on the leading edge of driving this change.

- 100% online
- Accelerated 7-week courses
- Expert practitioner faculty

Upcoming Information Session

[November 23, 2020 | 1:00-2:00 pm](#)

Learn more at: [Jefferson.edu/PopHealth](https://jefferson.edu/PopHealth)
Questions: JCPH.Admissions@jefferson.edu

PopTalk

Webinar Series

One-hour webinars featuring experts in population health.



Save the Date

January 6, 2021

January 13, 2021

January 20, 2021

February 3, 2021

February 17, 2021

[Visit our Website](#)

for more detailed information
and upcoming PopTalks

The slide features a dark blue background with the text 'Thank You' in a bold, yellow, sans-serif font centered in the middle. The corners are decorated with light blue geometric patterns: a vertical strip on the left with a square, a semi-circle, and a triangle; a horizontal strip at the top with a square containing an 'X', a square, a circle, and a square with diagonal lines; a square with diagonal lines at the bottom left; and a cluster of a square with diagonal lines, a square with an 'X', and a circle at the bottom right.

Thank You