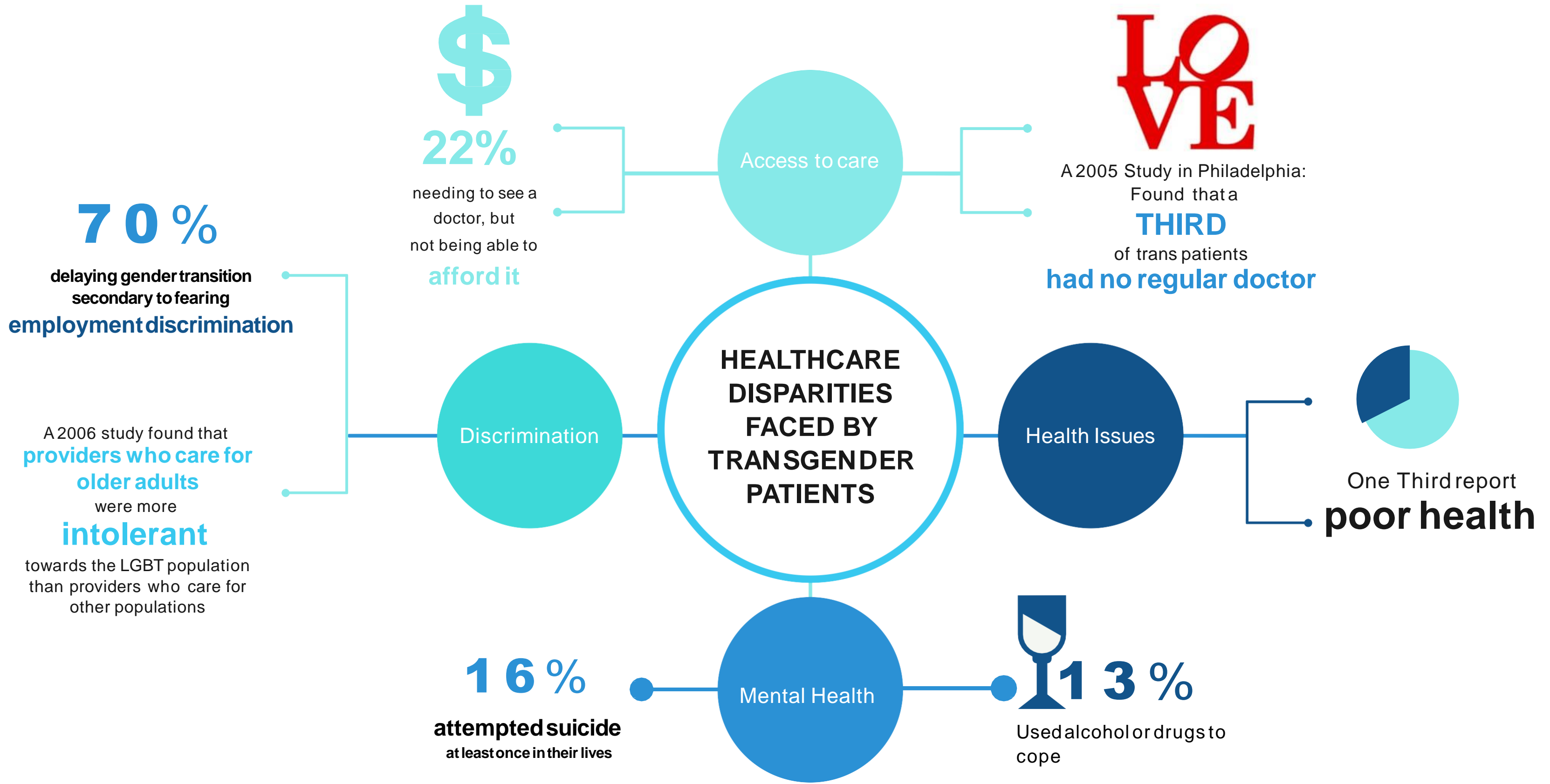


Creating a Medical Home for Transgender Older Adults: Challenges, Education, and Best Practices

Michael Danielewicz, MD; TingAnn Hsiao, MS2; John Liantonio, MD,
MBA, MHDC; Elizabeth Collins, MD; Brooke Salzman, MD; Susan
Parks, MD



Transgender patients over the age of 65 reported....



Improving the Lives of Transgender Older Adults: Recommendations for Policy and Practice. SAGE (Services and Advocacy for GLBT Elders) and National Center for Transgender Equality (NCTE). 2012.

FROM A SURVEY OF PRIMARY CARE PROVIDERS AND STAFF (N=57)

40%

witnessed discrimination
towards LGBT patients,
families or staff

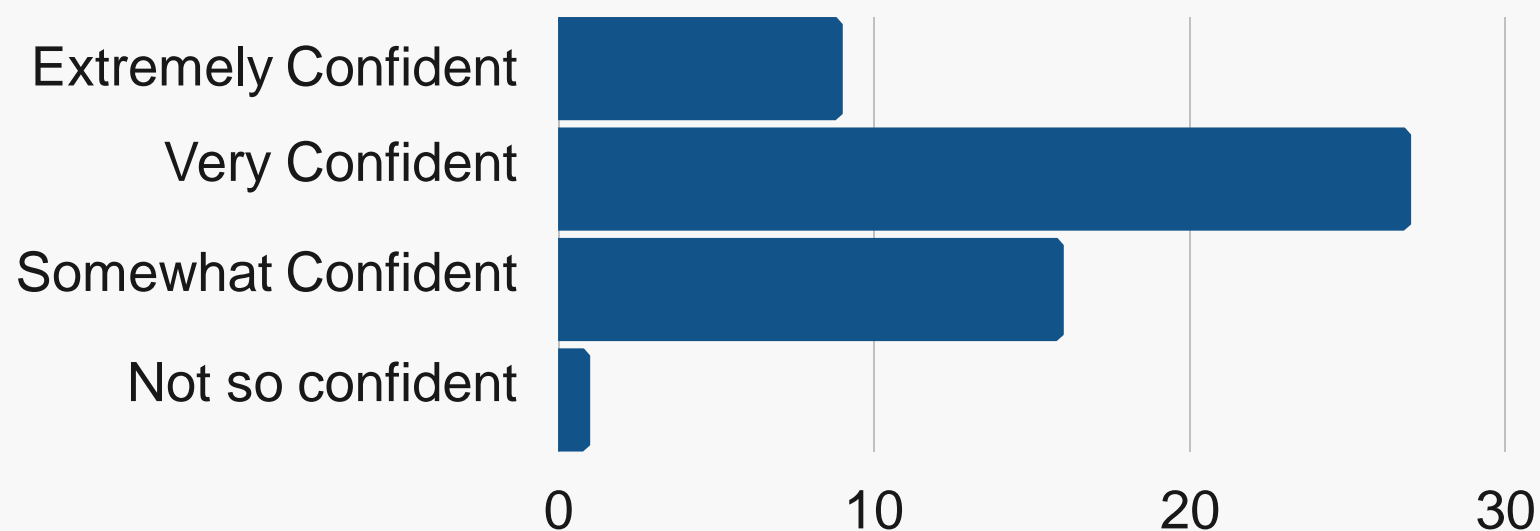
21%

did not consider their
workplace to be
LGBT friendly

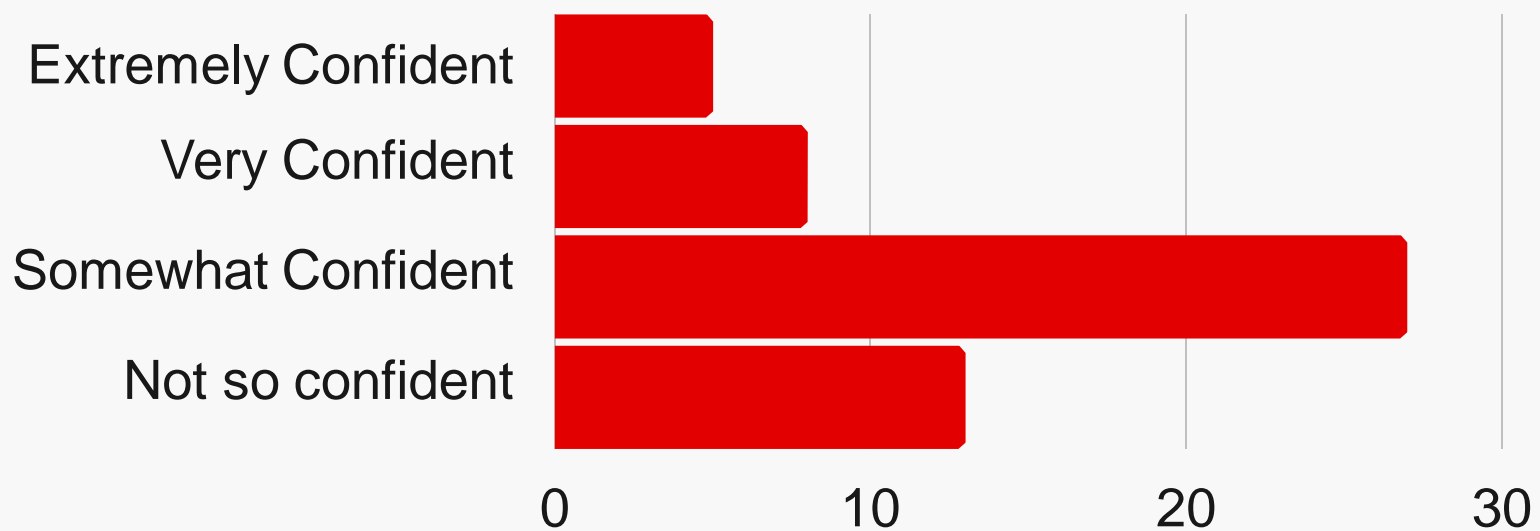
49%

were not confident
managing HIV
medication

Provider confidence when working with LGBT patients



Provider confidence when working with transgender patients



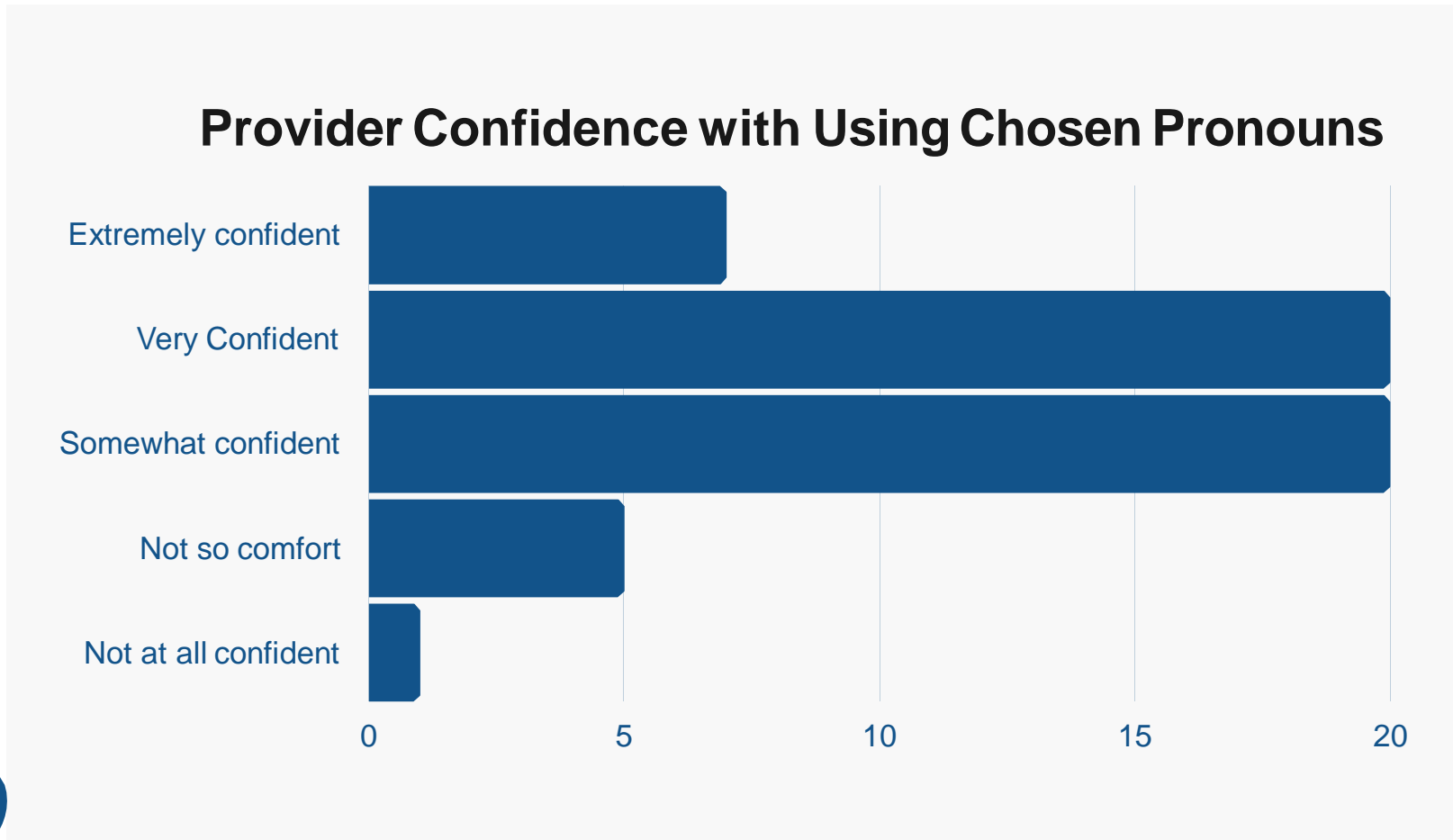
“Our practice is not explicitly LGBTQ friendly (with demonstrated allyship/symbols that indicate to patients it is a safe place).

We do minimal education/patient care pertaining to hormone therapy.

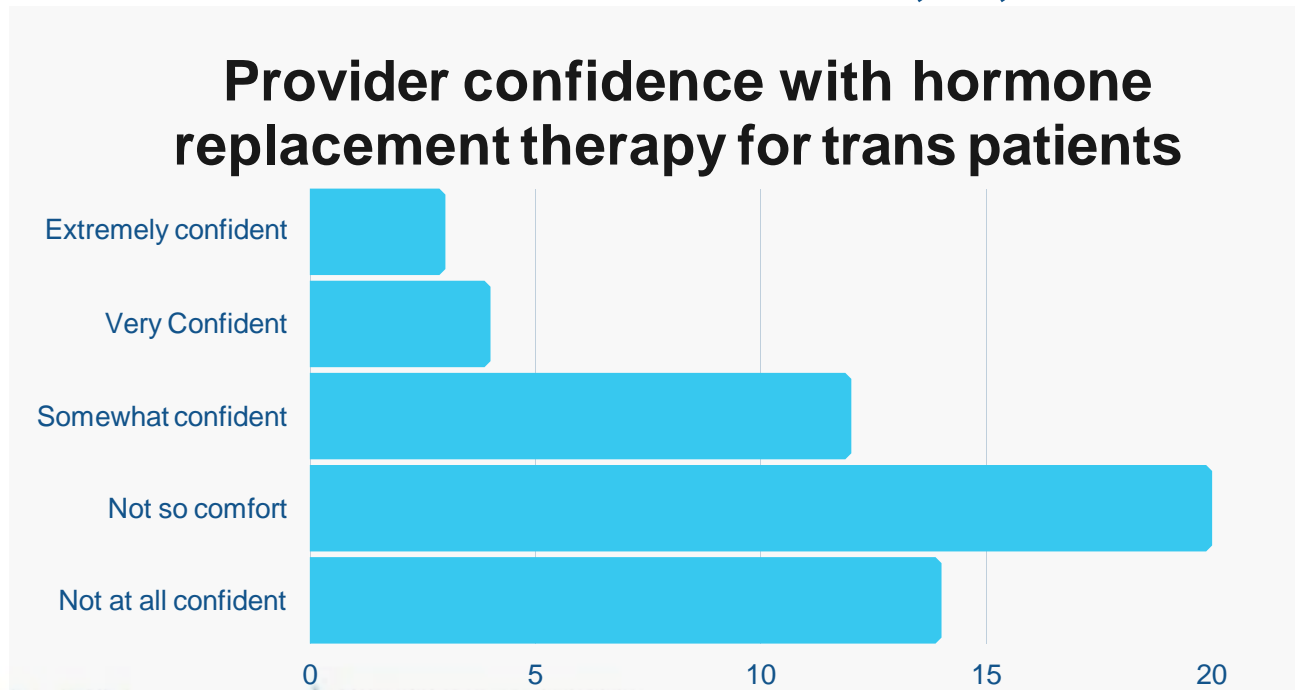
Even PreP is something we seek out on our own but isn't regularly incorporated into care.”

FROM OUR SURVEY OF PRIMARY CARE PROVIDERS AND STAFF (N=57)

“ I would like to be more confident in communicating with people in a manner that makes them most comfortable.
My comfort level is not the same as my staff's. ”



“ I feel comfortable taking a comprehensive social and sexual history and counseling on screenings pertaining to LGBTQ populations. However, I have a **knowledge gap** when it comes to **trans care.** ”



“ We don't have the appropriate tools to document gender and identity in the EMR. I think most of the clinicians are **not trained in management of patients on hormone treatment** or requesting planning for gender reassignment. Additionally, we **don't have the adequate social support** to expand this offering. ”

Creating a Medical Home for Transgender Older Adults: Challenges, Education, and Best Practices

The logo for SAGE (Services and Advocacy for GLBT Elders) features the word "sage" in a blue, lowercase, serif font, centered within a white circle.

SAGE Training

SAGE (Services and Advocacy for GLBT Elders) will provide dedicated online training for primary care providers and office staff on the care of LGBT older adults



Connecting Providers to Resources

A half-day training session focused on addressing current gaps in medical knowledge (including discussion of hormone therapy) and educating providers of the available educational online resources (TransLine, UCSF guide, etc.)



LGBT Elder Initiative:

The primary care team will continue to partner with the LGBT Elder Initiative (a Philadelphia-based LGBT senior advocacy group) who provide workshops geared toward LGBT older adults and local health resources

Challenges and Barriers of Creating a Medical Home for Transgender Older Adults

COVID-19

The recent coronavirus epidemic has negatively affected the geriatrics practice in the form of time delays, institutional budgetary shortfalls.

Additionally, patients have experienced increased social isolation.

OFFICE TRANSITION

The geriatrics practice where the intervention will take place is moving to a new location in a larger family medicine office.

POLITICAL LANDSCAPE

There is increased polarization in the political landscape and persistent social injustice.

ACCESS TO HEALTHCARE

There are current attempts to remove protection of access to healthcare for LGBT patients.

Recently, a federal judge blocked the HHS from lifting anti-discrimination protections for LGBT patients.

IMPLEMENT

Other possible barriers include provider discomfort and a current lack of awareness of the local available support resources.

References:

1. SAGE (Services and Advocacy for GLBT Elders) and National Center for Transgender Equality (NCTE). (2012). Improving the Lives of Transgender Older Adults: Recommendations for Policy and Practice, 3-8.
2. Kenagy, G. P. (2005). Transgender health: Findings from two needs assessments studies in Philadelphia. *Health & Social Work* 30 (1), 19-26.
3. Kimmel, D., et al. (2006). Lesbian, gay, bisexual and transgender aging: Research and clinical perspectives: p. 247- 248
4. Cameron, C. (2020, June/July). Trump Presses Limits on Transgender Rights Over Supreme Court Ruling. *The New York Times*. Retrieved from <https://www.nytimes.com/2020/07/24/us/politics/trump-transgender-rights-homeless.html>