

Illinois State University

ISU ReD: Research and eData

Illinois Shakespeare Festival

Fine Arts

Summer 2017

2017 Illinois Shakespeare Festival Program

School of Theatre and Dance
Illinois State University

Follow this and additional works at: <https://ir.library.illinoisstate.edu/isf>



Part of the [Theatre and Performance Studies Commons](#)

Recommended Citation

School of Theatre and Dance, "2017 Illinois Shakespeare Festival Program" (2017). *Illinois Shakespeare Festival*. 34.

<https://ir.library.illinoisstate.edu/isf/34>

This Book is brought to you for free and open access by the Fine Arts at ISU ReD: Research and eData. It has been accepted for inclusion in Illinois Shakespeare Festival by an authorized administrator of ISU ReD: Research and eData. For more information, please contact ISUREd@ilstu.edu.



ILLINOIS
SHAKESPEARE
FESTIVAL

JULY 30 TO AUGUST 12, 2017



COLLEGE OF
FINE ARTS
Illinois State University

SEASON SPONSOR

SNYDER

THE SNYDER COMPANIES
APARTMENTS | HOTELS | INSURANCE | REAL ESTATE



WONDER ON, TILL
TRUTH MAKE
ALL THINGS PLAIN.

The Snyder Companies
presenting sponsors of the
2017 Illinois Shakespeare Festival!

SNYDER

THE SNYDER COMPANIES
APARTMENTS | HOTELS | INSURANCE | REAL ESTATE

2017

40th Season

A Midsummer Night's Dream

by William Shakespeare

Directed by Robert Quinlan

Ewing Theatre

Shakespeare's Amazing Cymbeline

by William Shakespeare

Adapted by Chris Coleman

Directed by Andy Park

Ewing Theatre

I Heart Juliet

Written and Composed by Q Brothers Collective (GQ, JQ, Jax, and Pos)

Directed by Kevin Rich

Westhoff Theatre

Sponsored by Paul and Sandra Harmon

The 2017 Illinois Shakespeare Festival is a proud member of:



Illinois State University • College of Fine Arts • School of Theatre and Dance

Summer 2017 • 40th Season • 3

Whether you're investing in
training or tile,
We offer options that fit your life.



hbtbank.com
866-897-2276



Banking is personal.

A Letter From the Artistic Director

Welcome to the 2017 season of the Illinois Shakespeare Festival and thank you for joining our celebration of 40 wonderful years bringing high-quality professional Shakespeare to central Illinois.



In honor of our landmark season, we're pulling out all the stops this year to bring you an unforgettable season. Director Robert Quinlan (*Macbeth*, *Richard II*) returns with his fabulous musical take on *A Midsummer Night's Dream* featuring original music composed by Jordan Coughtry. Andy Park (*Failure: A Love Story*, *Peter and the Starcatcher*) is back to direct a magically theatrical 6-person adaptation of *Cymbeline* featuring an incredibly talented cast of Equity actors including ISF veteran Tom Quinn in the title role and *Boardwalk Empire*'s Nisi Sturgis as Imogen. And finally, thanks to the generosity of our ISF Board members, we have commissioned the next in the Q Brothers Collective's series of hilarious, imaginative Hip-Hop Shakespearean adaptations, *I Heart Juliet*. This will be performed in our intimate Westhoff Theatre on ISU's campus, and our limited seating there makes it the hottest ticket in town.

Our celebration doesn't end there: back by popular demand for a fifth straight season, Chicago's Improvised Shakespeare Company now has a mainstage slot on Tuesday nights at 7:30. Our tradition of offering free theatre for young audiences continues with a performance of *Sleeping Beauty* on Wednesday mornings at Ewing and Saturday mornings at the Connie Link Amphitheater in Normal. And finally, our green shows this year include a musical pre-show performance by cast members on Midsummer nights, a three-person abridgment of *Comedy of Errors* on *Cymbeline* nights, and live Jazz in the Courtyard every Tuesday evening.

I'd also like to introduce our new Managing Director Bill Prenevost, who brings with him extensive theatre management experience from regional theaters all over the country. As an alumnus of Illinois State University, this is a homecoming for him, and we are glad to have him.

This is a bittersweet season for me, as it will be my fifth and final in this role. Our next chapter includes a new position at the University of Colorado and a newborn baby daughter. It has been a privilege living and working here for the past five years; ISF will always feel like an artistic home to me. Thank you for welcoming us into this community and helping make my time here unforgettable. A new Artistic Director will be announced at the end of the summer, but I can tell you, ISF will be in very good hands as it embarks on its next 40 years of Shakespeare in the cornfields.

Thanks again for your patronage, and best wishes for a magical summer.



Contacting the Festival

Illinois Shakespeare Festival • Campus Box 5700
Normal, IL 61790-5700 • illinoisshakes.com

Box office 309-438-2535
Management office 309-438-8974
Costume donations 309-438-5150
Shakespeare Society 309-438-7735

Festival Staff

Janet Wilson

Producer

Kevin Rich

Artistic Director

William Prenevost

Managing Director

Shawn Malott

Production Manager

Courtney Grose

Business Manager

Kristen Nesvacil

Front of House Manager, CPA

Jane Walsh

Director of Development, College of Fine Arts

Jean M. Miller

Dean, College of Fine Arts

Contacting the Box Office

Center for the Performing Arts Box Office
(corner of School & Beaufort Streets in Normal)
Open Monday-Friday, noon - 4:00 p.m.

Ewing Box Office (Ewing Courtyard)
The box office in Ewing Courtyard will open
one hour before the ticketed performance begins



Visit Main Gallery 404

Representing over 40 LOCAL artists: painting, ceramics, photography, mixed media, glass, jewelry.



404 N. Main Street, Bloomington
 Wed.-Fri. noon-5:00; Sat. 10:00-4:00
 314-603-1349 • www.404maingallery.com

Midsummer Director's Notes

It is a joy for me to direct this play—Shakespeare's celebration of life and love—for the Illinois Shakespeare Festival's 40th season.

A Midsummer Night's Dream explores different kinds of magic: the magic of love, the magic of nature, and the transformational magic of putting on a play. Shakespeare demonstrates his astute observational powers about human nature—here examining the knotty and complex maze of falling in love. Characters vascillating between euphoria and torture in their search for a soulmate. Reason and imagination are pitted against one another throughout the play, with many of our characters only finding peace when they are able to accept the unexplainable.

For this production, Jordan Coughtry (who plays Puck) has composed music that captures the beating pulse of young love and the magic of the fairy kingdom. We have set this production in the late 1940s, a time when young people were considering newfound freedom in a Post War world. We have tried to make choices which trust the imaginative power an audience brings with it to the theatre—to transform our simple efforts into “something of great constancy.”

I hope you have a wonderful time.



Bloomington Location:
 407 N. Main Street

Normal Location:
 205 W North St

Open Everyday:
 6:30-6 Sun 8-5

www.coffeehound.net



Plot Synopsis

Theseus, the Duke of Athens, hears the complaint of Egeus, who is angry with his daughter Hermia for refusing to marry Demetrius. Lysander, her true love, has instead devised a plan for them to leave and marry. Hermia's friend, Helena, hears this and informs Demetrius.

In the forest, the king and queen of the fairies, Oberon and Titania, quarrel. Oberon sends Puck, a clever fairy, to find a flower containing a powerful love potion and to use a bit on an Athenian man, referring to Demetrius. Lysander and Hermia have become lost in the woods and stop to rest. Mistakenly, Puck uses the elixir on Lysander. Helena arrives and wakes the charmed Lysander, who falls in love with her. Hermia wakes to find Lysander missing and leaves to find him.

Puck encounters a group of men rehearsing a play and changes one of the men's heads to that of a donkey. Terrified, the rest flee. Titania is also under the flower's spell, and she falls in love with the donkey-headed man, Bottom.

Oberon realizes Puck's mistake of charming Lysander by mistake and orders him to fix it. Puck then uses the elixir on the sleeping Demetrius, who wakes and sees Helena, falling in love with her. Hermia enters, shocked to find both men fighting over Helena. Oberon instructs Puck to stop the lovers' quarrels. Puck plays tricks on the men, and eventually, the four lovers tire out and fall asleep.

Oberon finds Titania asleep with Bottom and reverses the spell. She wakes in love with Oberon once again. Puck whispers a charm to undo the spells on the Athenians. When morning comes, they wake to find Demetrius in love with Helena, and Lysander with Hermia. They follow the Duke through the forest where they are all married.



Titania/Hippolyta	NISI STURGIS ^æ
Theseus/Oberon	THOM MILLER ^æ
Helena	EMILY WOLD [‡]
Hermia	SUSIE PARR
Lysander	RAFFAEL A. SEARS ^æ
Demetrius	JESSE BHAMRAH
Puck/Philostrate	JORDAN COUGHTRY ^æ
Bottom	THOMAS ANTHONY QUINN ^æ
Egeus/Quince.	PATRICK TOON ^æ
Snug	JOE BIANCO
Snout	JOSE NATERAS
First Fairy.	MEHRY ESLAMINIA [‡]
Peaseblossom	HANNELORE ROLFING [‡]
Cobweb.	LIBBY ZABIT
Mustardseed	MADELINE CALAIS [‡]
Moth	PAIGE BRANTLEY
Starveling	MARK TYLER MILLER [‡]
Flute	CHRIS VIZURRAGA

Understudies: Mark Tyler Miller (Theseus/Oberon), Chris Vizurraga (Lysander), Christian Strange (Demetrius/Egeus/Quince), Christian Frieden Puck/Starveling), Thomas Russell (Snug), Joe Bianco (Bottom), Madeline Calais (Titania/Hippolyta), Hannelore Rolfing (Helena), Libby Zabit (Hermia), Paige Brantley (First Fairy/Snout)

Director	ROBERT QUINLAN ^{sdc}
Composer	JORDAN COUGHTRY
Assistant Director.	KRISTIN L. SCHOENBACK
Scenic Designer.	JOE C. KLUG ^{USA}
Lighting Designer.	DAN OZMINKOWSKI ^{USA}
Costume Designer	TYLER WILSON
Assistant Costume Designer	GRETCHEN HALLE
Sound Designer.	KIERAN PEREIRA
Properties Master	BRIDGID BURGE
Voice and Text Coach.	SUSAN SCHULD
Choreographer	KALEY PRUITT
Fight Director	JOHN TOVAR
Stage Manager	JAMIE K. FULLER
Assistant Stage Manager	KYLE WINKELMANN
Stage Management Intern	ALLIE NICHOLSON

^æMember of Actors' Equity Association
[‡]Equity Membership Candidate

^{USA}United Scenic Artists
^{sdc}Stage Directors and Choreographers Society

Shakespeare's Amazing Cymbeline Director's Notes

Over the years, *Cymbeline* has caused quite a stir, and consequently, it rarely gets produced. Scholars have debated whether to classify it as a history, a comedy, a romance or a tragedy. Critics have argued about the merits of its outlandish plot, improbable locations, and surprising characters. One well-known playwright and outspoken critic, George Bernard Shaw, went as far as to actually rewrite the final act of Shakespeare's play!

The first production of *Cymbeline* took place in April of 1611, and it was published as part of the First Folio in 1623. The play is very loosely based on an early British monarch, Cunobeline, who ruled immediately before the Roman conquest. However, Shakespeare took many liberties with the history and actually borrowed the basic plot of *Cymbeline* from a 15th century short story in Boccaccio's Decameron.

Cymbeline is one of The Bard's last plays, and while critics and scholars often take this play too seriously, Chris Coleman's adaptation is a friendly reminder of how much fun Shakespeare must have had when he penned it. To near absurdity, all of Shakespeare's greatest hits make an appearance in *Cymbeline* — mistaken identities, disguises, cross-dressing, a foolish king, lost children, forbidden marriage, intrigue, epic battles, devious plans and poison. For Chris Coleman's part, six actors portray

more than 20 characters in this energetic adaptation, and he adds a pianist to underscore, narrate and comment on the tale all along the way.

Enjoy *Shakespeare's Amazing Cymbeline*! While it's not one of Shakespeare's more commonly produced plays, it certainly takes you on a wild and unforgettable ride!



The Official Hair and Wig Stylists of the Illinois Shakespeare Festival

F I R S T



E D I T I O N

A premier full service salon where not tipping is our professional policy

309.829.4247

816 E. Washington St. • Bloomington, IL 61701

www.firsteditiononline.com

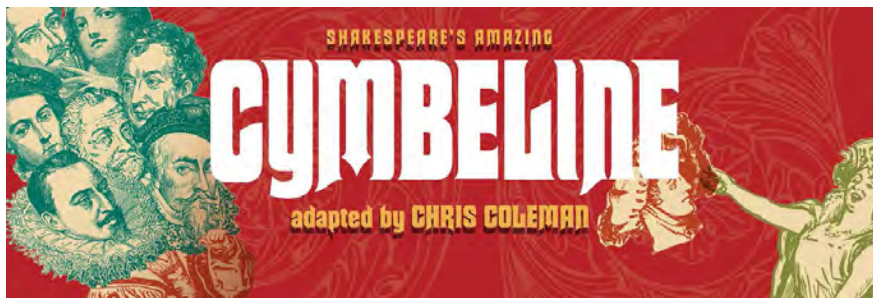
Plot Synopsis

In an attempt to gain power, King Cymbeline's evil queen urges her step-daughter, Princess Imogen, to marry Cloten, the queen's son. Cymbeline banishes Posthumus, Imogen's husband, who flees to Rome. Here, he enters into a bet with Iachimo, who claims that he can seduce Imogen. After arriving at the palace, Iachimo steals Imogen's bracelet and presents that as evidence to Posthumus. Heartbroken upon seeing the bracelet, Posthumus writes to his servant, Pisanio, and orders him to kill Imogen. Pisanio arrives in Wales, but unable to fulfil Posthumus's request, disguises Imogen as a boy and instructs her to join the Roman army.

From deep within a Welsh cave, Belarius explains that his sons, Guiderius and Arviragus, are actually the King's heirs, kidnapped away as children. Imogen finds herself at Belarius's cave, where the men allow the disguised Imogen to stay. The next morning, as the men are hunting, Imogen drinks a potion and falls into a deep sleep.

At the palace, Cloten demands to know where Imogen has gone. Dressed in Posthumus's clothing, he leaves to seek revenge. Eventually he crosses the hunters, a fight ensues, and Cloten is beheaded. The men return to the cave, where they find Imogen sleeping. Assuming that she is dead, they bury her alongside Cloten. When Imogen awakes, she believes the body next to hers is Posthumus. Roman soldiers pass by and Imogen agrees to serve in Lucius's army.

Guiderius and Arviragus, along with the help of Posthumus, save the king and help win the war. Posthumus identifies himself as a Roman and is taken prisoner along with Lucius, Iachimo, Posthumus, and Imogen. Within the King's tent, mistaken identities are revealed and joy restored.



Imogen NISI STURGIS^Æ
 Posthumus/Cloten/Belarius JORDAN COUGHTRY^Æ
 Cymbeline/Philario/1st Lord/Captain THOMAS ANTHONY QUINN^Æ
 Iachimo/Arviragus/Queen/2nd Captain THOM MILLER^Æ
 Pisanio/Frenchman/Lucius/Guiderius/1st Captain PATRICK TOON^Æ
 Pianist/Lady/Cornelius RAFFAEL A. SEARS^Æ

Understudies: Mehry Eslaminia (Imogen), Jose Nateras (Posthumus/Cloten/Belarius), Mark Tyler Miller (Iachimo/Arviragus/Queen/2nd Captain), Christian Strange (Pianist/Lady/Cornelius), Christian Frieden (Pisanio/Frenchman/Lucius/Guiderius/1st Captain)

Director ANDY PARK
 Assistant Director ENRICO SPADA
 Scenic Designer JOE C. KLUG^{USA}
 Lighting Designer DAN OZMINKOWSKI^{USA}
 Costume Designer NICHOLAS HARTMAN
 Assistant Costume Designer AMANDA VANDER BYL
 Sound Designer KIERAN PEREIRA
 Properties Master BRIDGID BURGE
 Voice and Text Coach SUSAN SCHULD
 Fight Director JOHN TOVAR
 Stage Manager COLT LUEDTKE
 Assistant Stage Manager ANDIE ANTONIK
 Stage Management Intern MARISOL COWAN



We are excited to announce
the Illinois Symphony Orchestra's

2017-2018 SEASON

concert schedule as we celebrate our 25th Anniversary!

Listen Live at 25! Now is the time to mark your calendar with all of the Illinois Symphony Orchestra's 25th Anniversary Season concert dates as we don't want you to miss out on any of our silver celebration. While we anxiously await the announcement of our next Music Director at the conclusion of this season, we guarantee the 2017-2018 Season will feature exciting programming, spectacular guest artists and the acclaimed music-making of the ISO musicians. So please hold these dates so you can experience the 25th Anniversary Season for Yourself!

Illinois Symphony Orchestra

Friday, October 27, 2017 | 7:30 PM
Bloomington Center for the Performing Arts,
Bloomington, IL

Saturday, October 28, 2017 | 7:30 PM
Sangamon Auditorium, UIS, Springfield, IL

Illinois Symphony Orchestra – Holiday Pops

Saturday, November 18, 2017 | 7:30 PM
Sangamon Auditorium, UIS, Springfield, IL

Sunday, November 19, 2017 | 3:00 PM
Bloomington Center for the Performing Arts,
Bloomington, IL

Illinois Symphony Chamber Orchestra

Friday, December 15, 2017 | 7:30 PM
First Presbyterian Church, Springfield, IL
Saturday, December 16, 2017 | 7:30 PM
Second Presbyterian Church, Bloomington, IL

Illinois Symphony Orchestra

Friday, January 26, 2018 | 7:30 PM
Bloomington Center for the Performing Arts,
Bloomington, IL

Saturday, January 27, 2018 | 7:30 PM
Sangamon Auditorium, UIS, Springfield, IL

Illinois Symphony Orchestra - Pops

Friday, February 2, 2018 | 7:30 PM
Bloomington Center for the Performing Arts,
Bloomington, IL

Saturday, February 3, 2018 | 7:30 PM
Sangamon Auditorium, UIS, Springfield, IL

Illinois Symphony Chamber Orchestra

Friday, February 23, 2018 | 7:30 PM
First Presbyterian Church, Springfield, IL
Saturday, February 24, 2018 | 7:30 PM
Second Presbyterian Church, Bloomington, IL

Illinois Symphony Orchestra

Friday, March 23, 2018 | 7:30 PM
Bloomington Center for the Performing Arts,
Bloomington, IL

Saturday, March 24, 2018 | 7:30 PM
Sangamon Auditorium, UIS, Springfield, IL

Illinois Symphony Orchestra

Saturday, April 28, 2018 | 7:30 PM
Sangamon Auditorium, UIS, Springfield, IL
Sunday, April 29, 2018 | 3:00 PM
Bloomington Center for the Performing Arts,
Bloomington, IL

Concerts for Kids

Thursday, May 3, 2018 | 10:00 AM
Sangamon Auditorium, UIS, Springfield, IL
Friday, May 4, 2018 | 10:00 AM & 12:15 PM
Bloomington Center for the Performing Arts,
Bloomington, IL

(309)434-2777 | ilsymphony.org  

ILLINOIS SYMPHONY ORCHESTRA

I Heart Juliet Director's Notes

"Is this the promised end?"

Kent says this in Shakespeare's *King Lear*, when Lear walks onstage in the fifth act with his daughter, Cordelia, dead in his arms. Why does he say this? Because Shakespeare's *Lear* was an adaptation of another play, *King Leir*, that Elizabethan audiences were already familiar with. And in the original, Cordelia didn't die. Lear didn't, either. Shakespeare killed them.

Shakespeare wasn't precious with the source material he adapted. The Gloucester subplot of *Lear* was his invention, too. When he adapted Thomas Lodge's *Rosalynde* into *As You Like It*, he invented a handful of brand new characters, including Jacques and Touchstone. And in his take on Arthur Brooke's *The Tragical History of Romeus and Iuliet*, the much-beloved character of Mercutio was entirely his idea.

On the one hand, it seems sacrilegious to adapt Shakespeare's plays: to change things, add characters, include modern-day music and poetry. On the other hand, that's exactly what Shakespeare was doing.

Adapting our classics for a contemporary audience is a way to keep them alive, to reference our history and remind us that humans have been acting like humans for a long time now. There are days, though, when I wish our classics weren't still relevant.

Romeo & Juliet shows us that categorizing people and holding grudges can have tragic consequences for our children. I can imagine it was Shakespeare's hope that when people saw his version of the classical story, they would be inspired afterward to find the Montagues or Capulets in their own lives and make peace.

And here we are, 450 years later. *Romeo & Juliet* is perhaps the most well-known play on the planet, and it's still relevant.

It's my hope that we keep telling this story, in as many forms as it takes, until audiences finally hear what it's trying to tell us.



Romeo/Sheriff	JESSE BHAMRAH
Monte/Larry/Rosaline	JOE BIANCO
Lady Capulet/Shady Uncle Mary	EMILY WOLD [‡]
Juliet	SUSIE PARR
Lady Monte/Nanna/Broadcaster 3	MEHRY ESLAMINIA [‡]
Parry/Pigeon/Broadcaster 2	JOSE NATERAS
Capulet/Announcer	MARK TYLER MILLER [‡]
Benny V	CHRIS VIZURRAGA
Mercutio/Broadcaster 1	CHRISTIAN STRANGE
Tybalt/Servant/Penguin	CHRISTIAN FRIEDEN [‡]
DJ	MADÉLINE CALAIS [‡]

Understudies: Thomas Russell (Romeo/Sheriff), Libby Zabit (Juliet), Hannelore Rolfling (Lady Capulet/Shady Uncle Mary), and Madeleine Calais (Lady Monte/Nanna/Broadcaster 3)

Director	KEVIN RICH
Writers/Composers	Q BROTHERS COLLECTIVE (GQ, JQ, JAX, AND POS)
Scenic Designer	JOE C. KLUG ^{USA}
Lighting Designer	DAN OZMINKOWSKI ^{USA}
Costume Designer	CHRISTINA LEINICKE
Assistant Costume Designer	MEGAN WOOD
Sound Designer	KIERAN PEREIRA
Properties Master	BRIDGID BURGE
Voice and Text Coach	SUSAN SCHULD
Fight Director	JOHN TOVAR
Dance Captain	MADÉLINE CALAIS
Stage Manager	JAYSON T. WADDELL ^{AE}
Assistant Stage Manager	EMILY QUICK [‡]
Stage Management Intern	SAVANNAH CATHERS

I Heart Juliet was first developed in a residency at Connecticut College and was commissioned for a professional production by the Illinois Shakespeare Festival in 2016. Special thanks to Sue Silvey, Jerry and Carol Ringer, Annette Martinez and the ISF Board for their generous support in making this commission possible.

Production is sponsored by Paul and Sandra Harmon

TAKE A *Ride* ON THE TOWN



**NEW PUBLIC BIKE
SHARING SYSTEM**

www.normal.org/bikenormal

Advocate
BroMenn Medical Center



Zagster

Nurture your mind and body!

*"Our bodies are our gardens -
our wills are our gardeners."*

William Shakespeare

Advocate BroMenn
Health & Fitness Center

POWERED BY SEQUOIA
wellness

At Advocate BroMenn Health & Fitness Center, our certified and professional staff will support you on your journey to **true wellness**.

Included in your membership:

- Health coaching & comprehensive individual exercise program
- State-of-the-art fitness center
- Lap & warm water hydrotherapy pools, whirlpool
- Indoor track
- Massage suite
- Over 50 group exercise classes

***Mention this ad for a FREE VISIT! For more information, call
309.433.WELL (9355) or stop by today!***

Advocate BroMenn Health & Fitness Center
1111 Trinity Lane; Bloomington, IL 61704
www.advocatehealthfitness.com



Director's Notes

In this story of mistaken identities, the world is thrown into complete chaos as it follows two sets of identical twins, who end up in the same town together for the first time since their separation at birth. Three women take on all of Shakespeare's roles, including the bawdy and exaggerated men, bringing even more ridiculous twists and turns to this play!

Adapted by Colorado Shakespeare's Violence Prevention program, this text focuses on the mistreatment and bullying that arises in such chaos and confusion. Follow the outlandish and entertaining journey of these sets of twins as they learn what its like to "walk hand in hand, not one before another."

Director's Notes

Working on a play like Stacey Lane's *Sleeping Beauty* is always a refreshing opportunity. With just a handful of actors and a few props and costumes to tell a new twist on a familiar story, *Sleeping Beauty* is a theatre maker's delight. Getting to do it here at the Illinois Shakespeare Festival, in a free-for-all-ages outdoor production on the grounds of the beautiful Ewing Manor and the Connie Link Amphitheater only adds to the fun.

The play tells a simple story that points to the powers of persistence and problem-solving. It shows us the value of imagination to overcome all kinds of trouble—especially the kind foisted upon us by an evil fairy hogging the limelight—while reminding us that sometimes said evil fairy is not all she seems, and kindness always wins.

Comedy of Errors BY WILLIAM SHAKESPEARE

Adriana & Others MADELINE CALAIS
 The Antipholus Twins HANNELORE ROLFING
 The Dromio Twins LIBBY ZABIT

Director KRISTIN L. SCHOENBACK
 Scenic Designer/Properties Designer BRIDGID BURGE
 Costume Coordinator KARI BETH RUST
 Text Coach SUSAN SCHULD
 Stage Manager ANDIE ANTONIK

PERFORMANCES ARE AT 6:30 P.M.
 Before each performance of *Cymbeline* • Ewing Courtyard

THIS GREEN SHOW IS SPONSORED BY



Sleeping Beauty BY STACEY LANE

Storyteller/Frog/Prince CHRISTIAN STRANGE
 Musician/Wallace CHRISTIAN FRIEDEN
 Penelope/Torwinda MADELINE CALAIS
 Griselda HANNELORE ROLFING
 Beatrice/Morwinda LIBBY ZABIT

Director ENRICO SPADA
 Scenic Designer/Properties Designer BRIDGID BURGE
 Costume Designer MEGAN WOOD
 Stage Manager EMILY QUICK
 Assistant Stage Manager MARISOL COWAN

PERFORMANCES ARE AT 10 A.M.
 Wednesdays • Ewing Theatre
 Saturdays • Connie Link Amphitheatre

THIS THEATRE FOR YOUNG AUDIENCES
 PRODUCTION IS SPONSORED BY





THE
Music
SHOPPE
INC.

The Music Shoppe's
PRO-SOUND
CENTER

YOUR ONE-STOP MUSIC SHOPPE

- Band & Orchestra
- Guitars • Drums
- Digital Pianos
- Sheet Music
- Instrument Repair
- Lesson Studios

www.TheMusicShoppe.com
1540 E College Ave, Normal
(800) 322-5019



**YOUR HOUSE
HAVE A CASE OF
THE UGLIES?!**



WWW.CI-ROOFWASHING.COM

SCHEDULE YOUR APPOINTMENT TODAY:

309-287-0054

Tuesdays at Ewing



Glenn Wilson and Friends Jazz Series is celebrating its 10th season at the festival where Jazz in the Courtyard has become an ISF favorite. Wilson has toured and recorded with Buddy Rich, Lionel Hampton, Doc Severinsen, Bruce Hornsby and many other jazz and music greats in his 45-year career.

Glenn Wilson and Friends Jazz Series is sponsored by Further Jazz, Inc. with funding from the Illinois Prairie Community Foundation.



PERFORMANCES ARE FROM 6-7 P.M. • FREE TO THE PUBLIC

Back for a 5th summer by popular demand! Based upon audience suggestions, the group creates a fully improvised Shakespearean masterpiece right before your eyes. Nothing is planned-out, rehearsed, or written! All of the dialogue is spontaneous, as are the characters and the story!



PERFORMANCES ARE AT 7:30 P.M. • JULY 11, 18, 25, AND AUGUST 1, 8 • ALL SEATS ARE \$16, GENERAL ADMISSION



SARAH DUTTA, MD
PEGGY NEUMANN, APN

Proudly Supports



ILLINOIS
SHAKESPEARE
FESTIVAL

OBSTETRICS, GYNECOLOGY, INFERTILITY
BOARD CERTIFIED

107 N. Regency • Bloomington, IL 61701

3 0 9 . 6 6 1 . 0 4 0 6

www.sarahduttaobgyn.com



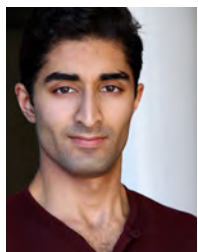
David Davis Mansion

1000 Monroe Drive
Bloomington, IL 61701
309-828-1084

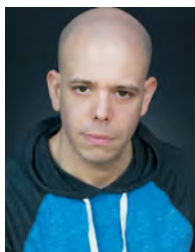
TOURS

Wednesday - Saturday • 9 a.m. - 4p.m.

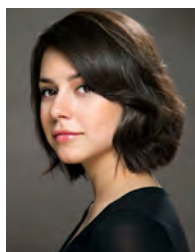
Acting Company



Jesse
Bhamrah



Joe Bianco



Paige Brantley



Madeline
Calais



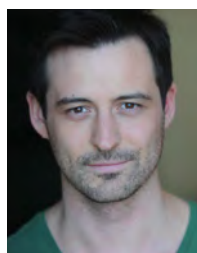
Jordan
Coughtry



Mehry
Eslamina



Christian
Frieden



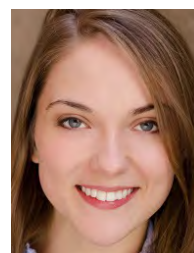
Thom Miller



Mark Tyler
Miller



Jose Nateras



Susie Parr



Thomas
Anthony Quinn



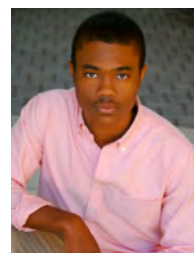
Hannelore
Rolfing



Thomas
Russell



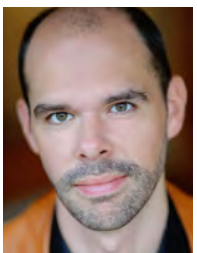
Raffael A.
Sears



Christian
Strange



Nisi Sturgis



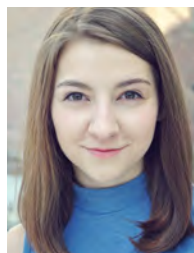
Patrick Toon



Chris
Vizurraga



Emily Wold



Libby Zabit

Company Bios

JESSE BHAMRAH — Demetrius (*Midsummer*), Romeo/Sheriff (*Juliet*) — is extremely excited to join ISF for the first time this season! Originally from around DC, Jesse earned his B.A. in Theater from James Madison University. He just finished a season with Milwaukee Rep in their Emerging Professional Residency program. Roles at The Rep included Juan in *Man of La Mancha* and Ensemble tracks in *A Christmas Carol* and *Jane Eyre*. Understudy roles included Amir in *Disgraced*, Sancho in *Man of La Mancha*, Jim in *The Glass Menagerie*, and Froggy in *The Foreigner*. He would like to thank everyone who has made this season possible!

JOE BIANCO — Snug (*Midsummer*), Monte/Larry/Rosaline (*Juliet*) — is happy to make his ISF debut. Working primarily out of Chicago, he has worked with: Chicago Shakespeare Theater (*Othello: The Remix, Since I Suppose, Merry Wives...*), The House Theatre (*Hammer Trinity*), Lifeline (*Tale of Two Cities*), Door Shakespeare (*Caesar, Lear, Midsummer, Comedy...*), MPAC (*Spamalot! Christmas Carol*), Other Theater Company (*Bent*), Oak Park Festival (*Henry V, Richard III, Amadeus*) and Montana Shakespeare in the Parks where he recently appeared as Claudius in *Bill Brown's Hamlet*. Voiceover: McDonalds, Dean Foods, The Onion, Lays, Porsche, Ducati, Dollywood and many more. TV: *Chicago Fire*. Love to the incredible women at Shirley Hamilton Talent. www.actorjoebianco.com

PAIGE BRANTLEY — Moth (*Midsummer*), Combat Assistant — is elated to be a company member of the Illinois Shakespeare Festival this summer as an acting intern and assistant to the fight choreographer (*Midsummer/Cymbeline*) Paige is a senior Acting major at Illinois State University. Previous roles include Sally Bowles (*Cabaret*), Tybalt (*Romeo and Juliet*), and Sor Juana (*The Heresy of Love*), which she was nominated for the Irene Ryan Acting Scholarship. She is also a member of the ISF TourCo as Mercutio/Lord Capulet in *Romeo and Juliet*. Special thanks to ISU SoTD, my parents, John Tovar, Robert Quinlan, Thomas Russell, Autumn Egger, Kristin Schoenback, Janet Wilson, Jayson T. Waddell, and Jamie Fuller.

MADLINE CALAIS — DJ (*Juliet*), Mustardseed (*Midsummer*), Penelope/Torwinda (*Sleeping Beauty*) — just completed her third year as a B.F.A. Acting Major at the University of Houston School of Theatre and Dance. She has been a part of Houston's Shakespeare Outreach Group for two years and the following shows at UH: *Julius Caesar* (Julius Caesar), *Circle Mirror Transformation* (Theresa), *Intimate Apparel* (Mayme understudy), and *Broken Horizon* (Caregiver).

ILLINOIS STATE UNIVERSITY
School of Theatre and Dance

PLAY BOLDLY

Learn how to apply by visiting
FineArts.IllinoisState.edu/Theatre-Dance

2017-18 SEASON

THE FOREIGNER By Larry Shue September 27–October 1	MR. BURNS, A POST-ELECTRIC PLAY By Anne Washburn February 16–24
OEDIPUS By Sophocles Adapted by Ellen McLaughlin In Repertory • October 13–28	COSÌ FAN TUTTE By Wolfgang Amadeus Mozart March 2–9
ALL'S WELL THAT ENDS WELL By William Shakespeare In Repertory • October 13–28	BALM IN GILEAD By Lanford Wilson April 13–21
SHE KILLS MONSTERS By Qui Nguyen October 27–November 4	THE ILLUSION By Pierre Corneille, Adapted by Tony Kushner March 30–April 7
FALL DANCE CONCERT November 30–December 2	SPRING DANCE CONCERT April 26–29

INTERNSHIPS AVAILABLE WITH THE NATIONALLY
ACCLAIMED ILLINOIS SHAKESPEARE FESTIVAL

SPRINGFIELD CLINIC PRESENTS

THE REGIONAL PREMIERE
OF BROADWAY'S NEWEST HIT!

Disney

NEWSIES

THE MUSICAL

JULY 7 - 23

The Legacy Theatre

TICKETS: AT THE LEGACY.COM RING: 800.838.3006
101 EAST LAWRENCE AVE • SPRINGFIELD

Bloomington Meats



Proudly Supports the Illinois Shakespeare Festival



“BEST MEAT ON BUNN STREET”

2401 S. Bunn. • Bloomington, IL • 309-828-9731
www.bloomington-meats.com

Gailey
Eye Clinic

Focused on You

- ☞ iLASIK
- ☞ Laser Cataract Surgery
- ☞ Glaucoma Treatment
- ☞ Routine Eye Exams
- ☞ Retina & Macula Care
- ☞ Cornea Disease

GAILEY EYE CLINIC

1008 N. Main Street, Bloomington, IL 61701 • 309-829-5311

www.GaileyEyeClinic.com

Follow us on Facebook to hear about our latest news and promotions!

BIAGGI'S

RISTORANTE ITALIANO

PIZZA PRONTO PACK



SALAD • 2 PIZZAS • BREAD
only **\$30⁰⁰**
plus tax
SERVES 4-5 PEOPLE

BLOOMINGTON

1501 N. Veterans Parkway • (309) 661.8322
www.BIAGGIS.com

JORDAN COUGHTRY — Puck/Philostrate (*Midsummer*), Posthumus/Cloten/Belarius (*Cymbeline*) — ISF credits: *Failure: A Love Story*, *Macbeth*, *The Comedy of Errors*; New York: *Very Very* (J, J & Z), *Murder in the Cathedral* (Hoi Polloi), *Be Story Free* (InVerse Theatre), *Winter Journey* (P.S. 122). Regional: *Godspell* (Olney Theatre Center); *Twelfth Night* (Westport Country Playhouse); *Red* (TheatreWorks); *Emma* (Pioneer Theatre); *Candida* (Two River Theatre); *All's Well that Ends Well* (Alabama Shakespeare Festival); *Love's Labour's Lost* (The Shakespeare Theatre/RSC); The Shakespeare Theatre of NJ (9 seasons) including *Amadeus*, *Our Town*, and *Wittenberg*; Arkansas Shakespeare Theatre (Artistic Collective member) including *Hamlet*, *Romeo and Juliet*, and *The Two Gentlemen of Verona*.

MEHRY ESLAMINIA — First Fairy (*Midsummer*), Lady Monte/Nanna/Broadcaster 3 (*Juliet*) — Denver based, Mehry is thrilled to experience her first out of state contract with ISF. Select CO Regional Credits include the world premier of *Appoggiatura* (Kate/Musician), and *A Christmas Carol* with The Denver Center for the Performing Arts, *The Happiest Song Plays Last* (Shar) with Curious Theatre Co., *The Taming Of The Shrew* (Kate/Grumio) with Colorado Shakespeare Festival's Violence Prevention Tour, and *Guys And Dolls* (Adelaide), *Dirty Rotten Scoundrels* (Jolene), *August: Osage County* (Johnna), *Our Town* (Mrs. Soames) with Creede Repertory Theater. After ISF, you can catch her with Indiana Rep and Syracuse Stage through the end of the year.

CHRISTIAN FRIEDEN — Tybalt/Servant/Penguin (*Juliet*), Musician/Wallace (*Sleeping Beauty*) — Christian Frieden is a Junior at Illinois State University studying Theatre Education and Acting. He joins ISF as an acting intern and the recipient of the 2017 Sutter Family Shakespeare Scholarship. Past roles include Ensemble/Apothecary in *Romeo & Juliet*, Jeff in *Kimberly Akimbo*, and Rosencrantz in *Rosencrantz and Guildenstern are Dead*, for which he received an Irene Ryan Scholarship nomination. He is excited to be a part of the Illinois Shakespeare Festival for their 40th anniversary season!

MARK TYLER MILLER — Starveling (*Midsummer*), Capulet/Announcer (*Juliet*) — is joyfully returning to ISF for a second season. He holds his B.F.A. in Theatre from Cornish College of the Arts in Seattle, and is currently pursuing his M.F.A. in Acting at the University of Illinois. He has performed across the country in musicals, contemporary plays, Shakespeare and new works. Previous roles include: Orsino in *Twelfth Night* & *Slank/Hawking Clam* in Peter and the Starcatcher (Illinois Shakespeare Festival), Claude in *Hair* (Artswest Playhouse), Richard Mason in *Jane Eyre* (Taproot Theatre Company), and Bobby in *Postcards from Hotel Cassiopeia* (NYC Strawberry Theatre Festival).

THOM MILLER — Theseus/Oberon (*Midsummer*), Iachimo/Arviragus/Queen/2nd Captain (*Cymbeline*) — is thrilled to return to ISF. He was previously seen in *Love's Labour's Lost*, *Love's Labour's Won*, and *Richard II*. Favorite regional credits include: *Company* (Writer's Theatre), *Reasons To Be Pretty* (Studio Theatre), *The Last Five Years* (Denver Center), *Hair* (Prince Music Theater), *Macbeth* (Texas Shakespeare Festival), *Boeing Boeing* (Northern Stage), Off-Broadway: *Camp Wanatachi* (La Mama), *Mental: The Musical* (Cherry Lane). Thom received a B.F.A. in Acting from North Carolina School of the Arts and an MFA from the University of Illinois. He is a professor of Voice and Verse in the Department of Drama at Syracuse University.

JOSE NATERAS — Snout (*Midsummer*), Parry/Pigeon/Broadcaster 2 (*Juliet*) — is a Chicago based Actor & Writer. Recent credits include: *Picnic* (American Theatre Company), *Cymbeline* (Strawdog), *Reprise* (Adventure Stage Chicago), *The Van Gogh Cafe* (Filament Theatre), *The Grapes of Wrath* (The Gift Theatre), *Othello* (u/s*) & *Since I Suppose* (Chicago Shakespeare Theatre), *My Soul's Shadow* (Manual Cinema), *Balm in Gilead* (u/s Griffin Theatre), *Romeo & Juliet* (Notre Dame Shakespeare Festival, Teatro Vista); among others. He's toured with Montana Shakespeare in the Parks (*Hamlet*, *Twelfth Night*) & appeared on NBC's *Chicago Fire*. He's pursuing his M.F.A. in Writing at the School of the Art Institute of Chicago.



MEDICINE RESTAURANT & BAR
LUNCH AND DINNER 7 DAYS A WEEK
SUNDAY BRUNCH 10AM-2PM
120 NORTH STREET,
NORMAL IL 61761
WWW.MEDICINORMAL.COM
(309) 452-6334

**WARM.
DELICIOUS.
DELIVERED.**

Visit us in-store at:

**117 E Beaufort Street
Normal, IL 61761**

insomniacookies.com • 877.63.COOKIE




TAKE ME HOME TONIGHT



SERIOUS DELIVERY!™

★ **JIMMYJOHNS.COM** ★

207 W. NORTH ST. ~ 309.452.8200
305 S. MAIN ST. ~ 309.451.1800
208 LANDMARK DR. ~ 309.451.4700
2301 E. WASHINGTON ST. ~ 309.664.6800
203 W. MARKET ST. ~ 309. 828.3300

©2016 JIMMY JOHN'S FRANCHISE, LLC ALL RIGHTS RESERVED.

SUSIE PARR — Hermia (*Midsummer*), Juliet (*Juliet*) — She has recently returned to her home in Kalamazoo, Michigan after spending several years working with the American Shakespeare Center's touring company. Some of her ASC credits include: Ophelia in *Hamlet*, Louka in *Arms and the Man*, Cecily in *The Importance of Being Earnest*, and Tiny Tim in *A Christmas Carol*. Her other credits include Katherine in *Henry V* (Houston Shakespeare Festival), Marty in *Grease* (Crain River Theater), Kate in *The Beaux Stratagem* (University of Houston) and Irina in *Three Sisters* (University of Houston). She enjoys hiking, acro yoga, slacklining, birth work, and spending time with her nephews.

THOMAS ANTHONY QUINN — Bottom (*Midsummer*), Cymbeline/Philario/1st Lord/Captain (*Cymbeline*) — is pleased to be returning for his thirteenth summer with the festival. In the 2016 season, he enchanted audiences in his portrayals of Feste in *Twelfth Night* and Lord Aster in *Peter and the Starcatcher*. His favorite ISF roles include the title role in *King John*, Kent in *King Lear*, John Dory in *Wild Oats*, Chorus in *Failure: A Love Story*, and Tom in *The Complete Works of William Shakespeare (Abridged)*. He has created over eighty roles for the professional stage at theatres around the country. An accomplished teacher of acting, Tom serves on the faculty of Illinois Wesleyan University, where he is an Associate Professor, and Director for the School of Theatre Arts.

HANNELORE ROLFING — Peaseblossom (*Midsummer*), Griselda (*Sleeping Beauty*) — Hannelore Rolfing graduated this spring from the University of Colorado at Boulder with a B.F.A. in Theatre Performance. While at CU, Hannelore participated in six main season productions including *Tartuffe*, *The Winter's Tale* and *Twelfth Night* as well as understudied the Antipholus twins in the Colorado Shakespeare Festival's production of *The Comedy of Errors* in the summer of 2016. She is very excited to reprise the Antipholus roles in the Illinois Shakespeare Festival's 40th season Green Show and hopes continue to hone her work and skills in the art of Shakespeare.

THOMAS RUSSELL — Combat Assistant — is excited to return to the Illinois Shakespeare Festival this season. He is an acting major at ISU, where he has recently appeared as Claudius (*Rosencrantz and Guildenstern are Dead*), Coryphaeus (*Antigona Furiosa*), and Hone (*Waioira*) for which he received an Irene Ryan Acting Scholarship nomination. He also was the fight choreographer for multiple ISU productions, including *1776*, *This Is Our Youth*, *The Shout*, and *Ten Little Tenants*. He would like to thank his teachers for the training and mentorship, his friends for the unending support, and his parents for being the best mom and dad in the whole universe.

RAFFAEL A. SEARS — Lysander (*Midsummer*), Pianist/Lady/Cornelius (*Cymbeline*) — A native of Kansas City, MO. He's a 3rd year M.F.A. actor at University of Illinois. He studied vocal performance at Belmont University in Nashville. Recent stage credits include: Staged reading of *Master Wilder and the Cabala* (Illinois Theatre/ Goodman Theatre), *Romeo & Juliet*, *Dontrell, Who Kissed the Sea*, *The Grapes of Wrath* (Illinois Theatre), *The Play of Adam* (The Met Cloisters, NY), *Amazing the Change* (Atlantic Theatre, NY), *A Midsummer's Night Dream* (Nashville Shakespeare Festival), *Moonchildren* (Kansas City Rep, MO), and *Alexander and the Terrible, Horrible, No Good Very Bad Day* (The Coterie, MO). V/O: McDonald's, Burger King, Grand Theft Auto.

CHRISTIAN STRANGE — Mercutio/Broadcaster 1 (*Juliet*), Storyteller/Frog/Prince (*Sleeping Beauty*) — is excited to be making his Illinois Shakespeare Festival debut this summer! He is a rising senior Musical Theatre student at Carnegie Mellon University in Pittsburgh. Some of his favorite theatre credits include *South Pacific* and *The King and I* at Town Theatre in South Carolina as well as *Hamlet* and *A Midsummer Night's Dream* at Santa Cruz Shakespeare. He would like to give thanks to God, as well as his family and friends for supporting him throughout his artistic journey.

NISI STURGIS — Titania/Hippolyta (*Midsummer*), Imogen (*Cymbeline*) — ISF credits: Gertie Fail, Lady Macbeth, and Luciana. She recently toured as Emily in *Disgraced* at the Goodman Theatre, Berkeley Repertory Theatre and Seattle Repertory Theatre (BATA award). Broadway: *The 39 Steps*. Off-Broadway: *Intimate Apparel*. Regional highlights: *In the Next Room* and *Baskerville* (Cleveland Play House, *Baskerville* also at Cincinnati Playhouse); *Doubt*, *Mrs. Warren's Profession* (Denver Center); *A Doll's House*, *Who's Afraid of Virginia Woolf?*, *Pentecost* (The Old Globe); *Streetcar Named Desire*, *Our Town* (Shakespeare Theatre of NJ). TV: five seasons as June Thompson in HBO's *Boardwalk Empire* (best ensemble SAG Award nomination). M.F.A.: The Old Globe.

PATRICK TOON — Egeus/Quince (*Midsummer*), Pisanio/Frenchman/Lucius/Guiderius/1st Captain (*Cymbeline*) — has performed at regional theatres in Ohio, New Jersey, Massachusetts, Missouri, and Colorado as well as in numerous plays in New York City. Favorite roles include Roland in *Constellations*, Jaques in *As You Like It*, Jim in *The Weir* and especially Chaps in *ReEntry*, a play about mental health and the military which performed for active duty personnel and their families at bases around the country.

CHRIS VIZURRAGA — Flute (*Midsummer*), Benny V (*Juliet*) — Chicago stage credits include *Pirandello's Henry IV* (Remy Bumppo), *Captain Blood* (First Folio), *A Q Brothers' Christmas Carol* (Chicago Shakespeare), *One Man, Two Guv'nors* (Court Theater), *Miss Buncle's Book* and *Lester's Dreadful Sweaters* (Lifeline Theatre), *The Drowsy Chaperone* (Metropolis), *PrOne: the Musical* (Underscore), and *Tamer of Horses* (Stone Soup Theatre Project). As a former resident acting intern at Milwaukee Repertory Theater, he has performed in *Ragtime*, *A Christmas Carol*, *End of the Rainbow*, and *The History of Invulnerability*. He holds a B.F.A. in Musical Theatre from Shorter College.

EMILY WOLD — Helena (*Midsummer*), Lady Capulet/Shady Uncle Mary (*Juliet*) — is a native Arkansan who recently moved to Chicago. Favorite roles include Viola in *Twelfth Night* (Arkansas Shakespeare Theatre), Regan in *King Lear* (Studio 208), and Widow Quin in *The Playboy Of The Western World* (University of Houston PATP). Emily also enjoys working as a voiceover artist, and has done so for companies like McDonald's, Mountain Valley Spring Water, and Illinois Valley Community Hospital. When she's not working, Emily enjoys hiking, camping, and spending time with her family.

LIBBY ZABIT — Cobweb (*Midsummer*), Beatrice/Morwinda (*Sleeping Beauty*) — is thrilled to join ISF this summer! She is an incoming senior B.F.A. Acting



**HEARTLAND
THEATRE
COMPANY**

Think. Feel. Live.

<p>JULY THE MIKE DOBBINS MEMORIAL NEW PLAYS FROM THE HEARTLAND ONE-ACT PLAY FESTIVAL Guest Playwright: PHILIP DAWKINS</p>	<p>SEPTEMBER THE IMPORTANCE OF BEING EARNEST by Oscar Wilde DIRECTED BY DON LACASSE</p> <p>NOVEMBER THREE TALL WOMEN by Edward Albee DIRECTED BY RHYS LOVELL</p>
<p>FEBRUARY FOR THE LOYAL by Lee Blessing DIRECTED BY KATHLEEN KIRK</p> <p>APRIL FLOYD COLLINS THE MUSICAL by Adam Guettel/Tina Landau DIRECTED BY SANDRA ZIELINSKI</p>	 <p>DAVID KORTEMEIER featured in THE HOMECOMING 2017</p>

www.heartlandtheatre.org

ILLINOIS STATE UNIVERSITY
COLLEGE OF FINE ARTS • SCHOOL OF MUSIC

CONCERTS on the Quad

in conjunction with the
Illinois Shakespeare Festival
and The Pantagraph

July 3
Future Stuff

July 10
Ameranouche

July 17
April Verch Band

July 24
Singing Under the Stars

July 31
Evening of Jazz

ALL CONCERTS 7 p.m.

SPONSORS:

Mirza Fund of the
Illinois Prairie Community Foundation

Fell Trust

Town of Normal
Harmon Arts Grant Program

CONCERTGOERS SHOULD BRING LAWN CHAIRS OR BLANKETS FOR SEATING.
ALL CONCERTS ARE FREE AND TAKE PLACE ON THE EAST SIDE OF
COOK HALL (THE "CASTLE") ON THE QUAD.

major at Illinois Wesleyan University. Libby has recently returned from a semester abroad studying at the British American Drama Academy where she appeared in *The Country Wife* (Margery Pinchwife). Productions at IWU include *The Crucible* (Abigail Williams), *Klausal Square* (Klara), and *Giant* (Analita). She would like to thank her family for their endless support and all the love they put out into the world.

DELICIOUS MADE FRESH
MADE FRESH
FAMILY VALUES
ITALIAN RESTAURANT




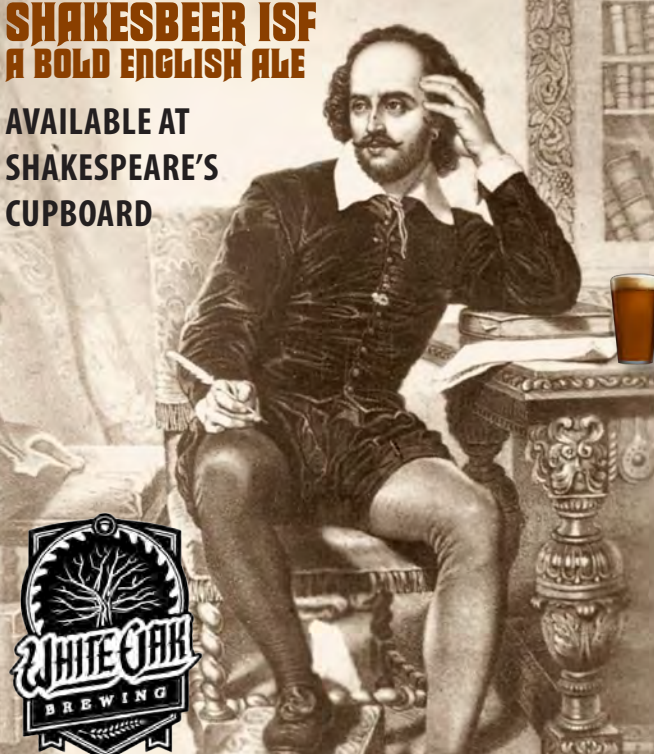
AVANTI'S

FAMILY VALUES

WWW.AVANTISNORMAL.COM

**SHAKESBEER ISF
A BOLD ENGLISH ALE**

AVAILABLE AT
SHAKESPEARE'S
CUPBOARD





ILLINOIS WESLEYAN UNIVERSITY

Saluting Illinois Wesleyan
faculty and student participation
in this year's festival production:

Faculty: Tom Quinn

Student: Libby Zabit

share your talents and your passions...



Directors

ANDY PARK — director (*Cymbeline*) — is excited to return to the Festival. Previous shows with ISF include *Peter and the Starcatcher*, *Failure: A Love Story* and *Shakespeare*. Andy recently was appointed Artistic Director of Nebraska Repertory Theatre and left Chicago where he served as Artistic Director of Quest Theatre Ensemble and Shedd Aquarium. Favorite directing projects include *Seashore* with TriArts Inc., *Blue Nativity* with Quest Theatre Ensemble, *One World* with Shedd Aquarium, *Circus Crashers* at Actors Gym, a spectacle for the Lollapalooza Music Festival, *Cirque Shanghai* at Navy Pier and *Bai Xi* at the Tropicana Casino in Atlantic City. Visit stagedirector.org to learn more.

ROBERT QUINLAN — director (*Midsummer*) — returns to Illinois Shakespeare Festival, where he previously directed *Richard the Second* and *Macbeth*. Other recent credits include the North American premiere of *The Heresy of Love* by Helen Edmundson (performed at the Spanish Golden Age Drama Festival in El Paso, TX), and *The Amish Project* by Jessica Dickey (Taproot Theatre, Seattle and

Fire Exit Theatre, Calgary). He is a member of Arkansas Shakespeare's Artistic Collective, where he has directed *Hamlet*, *Richard the Third*, and *A Midsummer Night's Dream*. He has taught acting and directing at Purdue University, the University of Illinois Urbana-Champaign, and currently heads the M.F.A. Directing Program at Illinois State University.

KEVIN RICH — artistic director/director (*Juliet*) — This is Kevin's fifth and final season as Artistic Director of ISF. Recent directing credits include *I Heart Juliet*, *Antony and Cleopatra*, *Rodeo*, and *The Magical Mind of Billy Shakespeare* at the Illinois Shakespeare Festival; *The Importance of Being Earnest* at the American Shakespeare Center; *Romeo & Juliet* at Illinois State University; and *As You Like It* at Bradley University. ISF appearances as an actor include the title roles in *Richard II* and *Richard III*, Puck in *A Midsummer Night's Dream*, and both Dromios in *Comedy of Errors*. B.A. Grinnell College, M.F.A. Yale School of Drama.

KRISTIN L. SCHOENBACK — director (*Comedy of Errors*) — This is Kristin's first year with the Illinois Shakespeare Festival. She is currently in the professional training program at Illinois state University, where she will receive her M.F.A. in directing. Kristin is co-founder and

artistic director of Cats Cradle Theatre in Chicago, and received her B.F.A. from Concordia University, Chicago. Her recent directing projects include, *Rosencrantz and Guildenstern are Dead* (Cats Cradle), *Baltimore Waltz* (ISU), and *Roustabout: The Great Circus Train Wreck!* (Concordia/KCACTF).

ENRICO SPADA — director (*Sleeping Beauty*) — Enrico is an MFA candidate in the professional directing program at ISU/ISF. ISU credits: *Kimberly Akimbo*, *Dancing on Checkers' Grave*, *The Tender Land* and the upcoming *All's Well That Ends Well* in October 2017. He is the Artistic Director of Pittsfield Shakespeare in the Park, where he has directed *The Tempest*, *A Midsummer Night's Dream* and *Romeo and Juliet*. Enrico was an education artist at Shakespeare & Company in Lenox, MA where he directed *Henry VI*, *The Winter's Tale*, *Twelfth Night*, *A Midsummer Night's Dream*, *King John*, *Cymbeline* and more. B.A. Acting/Theatre Education from Emerson College in Boston, MA. www.enricospada.com

JOHN TOVAR — festival fight director — is Certified Teacher and Fight Director with the Society of American Fight Directors. He has choreographed over 200 productions Off Broadway and throughout the Midwest. He is also the Executive Director of MACE (Movement and Combat Education), which produces the largest stage combat workshop in the world. He received his undergraduate degree in acting from Illinois State University, where he won the prestigious Jean Scharfenberg Award for acting. Currently, John is working to complete his M.F.A. in Directing through the Professional Director Training Program at Illinois State University.

Playwrights

CHRIS COLEMAN — adaptor (*Shakespeare's Amazing Cymbeline*) — is artistic director of Portland Center Stage. He was artistic director at Actor's Express in Atlanta, a company he co-founded in the basement of an old church in 1988. In the 12 years of his leadership, the Express grew from a shoestring operation to one of the most highly regarded small theaters in the country. As a director, Chris has worked at major theaters across the country, including Actor's Theater of Louisville, Oregon Shakespeare Festival, ACT Theatre, The Alliance Theatre, Dallas Theatre Center, Asolo Center for the Performing Arts, Pittsburgh Civic Light Opera, Pittsburgh Public Theatre, New York Theatre Workshop and Center Stage in Baltimore.

STACEY LANE — playwright (*Sleeping Beauty*) — Lane's plays have been performed at over three hundred theatres from coast to coast in the U.S., as well as in Canada, England, Australia, and New Zealand. She is the

recipient of the Helene Wurlitzer Foundation Residency Grant, the Montgomery County Arts & Cultural District's Literary Artist Fellowship, a "Charlie Award", and a nominee for "Outstanding Playwriting" at the Midtown International Theatre Festival.

Q BROTHERS COLLECTIVE — creators/writers/composers (*I Heart Juliet*) — Q Brothers are internationally known for their hip hop adaptations of the classics. These productions include *Othello The Remix*, *Funk It Up About Nothin'*, and *Q Gents*. The collective has grown beyond founding members GQ and JQ, to include Jackson Doran and Postell Pringle. Together, Q Brothers Collective has written and composed *Q Brothers' Christmas Carol*, *Liz*, and *Rome Sweet Rome*, and you can find them at Lollapalooza and Austin City Limits, performing and teaching kids to rap and DJ.

Designers

NICHOLAS HARTMAN — costume designer (*Cymbeline*) — comes to us from Venice Theatre in sunny Venice Florida. As he has been the resident costume designer for Venice Theatre. Prior to that Nicholas was at RWS and Associates, in New York City a Corporate entertainment company. He had previously been the resident designer/shop manager with the Manatee Players at Riverfront Theatre in Bradenton, FL. Nicholas holds an associate's degree from International Fine Arts College in Miami, FL as well as a B.F.A. from Illinois State University. He holds numerous awards in costume design and construction at national and state levels including National Outstanding Best Costume Designer at the AACT.

JOE C. KLUG — scenic designer — is delighted to be working with Illinois Shakespeare Festival. His previous work includes *A Midsummer Nights Dream*, *Merry Wives of Windsor* (Arkansas Shakespeare Theatre, Conway), *Devil's Music*, *The Doyle and Debbie Show* (Milwaukee Repertory Theatre), *The Life of Galileo* and *Our Class* (Remy Bumpo Theatre Company, Chicago), *The Little Mermaid* (Orlando Rep), *Lily's Purple Plastic Purse*, *Junie B. Jones is not a Crook* (First Stage Theatre), *Black Comedy* and *What the Butler Saw* (Bristol Valley Theatre, NY). He currently is the Assistant Professor of Scenic Design at University of Arizona and is a proud member of USA Local 829.

CHRISTINA LEINICKE — costume designer (*Juliet*) — Off Broadway: *Othello: the Remix* (Westside Theater) Regional Credits: *Q-Gents* (ISF), *The Importance of Being Earnest* (ASC), *Star Girl* (FSM), *Educational Tours of Taming of the Shrew*, *Macbeth*, *Romeo & Juliet* (USF). Costume Design Assistant & Wardrobe Coordinator Paramount Theatre, Aurora. Design Artist in residence

Concordia University, Chicago. M.F.A. University of Alabama. www.christinaleinicke.com

DAN OZMINKOWSKI — lighting designer — is thrilled to make his ISF debut. Regional designs include *Smokey Joe's Café* (Arena Stage), *Treasure Island*, *A New Musical* (Arkansas Repertory Theatre), *Let Me Down Easy* (Wexner Center for the Arts, Philadelphia Theatre Company, San Diego Repertory Theatre and Berkeley Repertory Theatre) and the U.S. Premiere of *From Here to Eternity* (Merry-Go-Round Playhouse). Tours: *Spirit of Uganda* (2010, 2012, 2014). Associate/assistant design credits: *A Night With Janis Joplin* (Broadway); *Impressionism* (Broadway); and *Le Rêve* (Wynn, Las Vegas). Nominated: Barrymore PECO Award for Outstanding Lighting Design. USA 829. B.F.A. Purchase College; M.F.A. Parson. Dan is the Head of Lighting Design at Illinois State University.

KIERAN PEREIRA — sound designer — is back for fourth year at the festival. Kieran finished his M.A. in Sound Design for Animation in 2015 at ISU. Last year he designed *Hamlet*, *Peter and the Starcatcher*, and *Twelfth Night*. He looks forward to another great summer and thanks you all for supporting the Illinois Shakespeare Festival.

TYLER WILSON — costume designer (*Midsummer*) — Regional: World Premiere *An Extra Penny* (Louisburg College); *The Miracle Worker* (Twin City Stage, NC); *Stillwater*, *A Christmas Carol* (Kansas City Repertory Theater); *4:48 Psychosis* (The Living Room); *Afflicted: Daughters of Salem* (The Coterie); *Picnic* (Kansas City Actors Theatre); *Caucasian Chalk Circle*, *Seven Guitars*, *Burnt by the Sun* (UMKC Theatre); *Cyrano*, *Othello* (Riverside Theatre); Sara Ruhl's *Passion Play*, *Speech and Debate* and *This is How it Goes* (Illinois State University). Education: B.A., Illinois State University; M.F.A., University Missouri-Kansas City. Faculty Fellowship, Costume Shop Manager and resident designer at Wake Forest University www.tylerwilsondesigns.com

MEGAN WOOD — costume designer (*Sleeping Beauty*) — is excited to join ISF for its 40th season! She has just finished her first year pursuing an M.F.A. at Illinois State University in Costume Design. Recent ISU designs include *Kimberly Akimbo* and *Rosencrantz and Guildenstern are Dead*. Megan is also a graduate of Simpson College where she previously designed *Marisol*.

Vocal and Text

SUSAN SCHULD — voice and text coach — Regional vocal coaching and acting credits include: American Players

Theatre, Montana Shakespeare in the Parks, Arkansas Shakespeare Theatre, Playwrights Horizons, Berkshire Theatre Festival, Mile Square Theater, Theatre LILA, Henley Street/Richmond Shakespeare, Amphibian Productions, Colonial Theater, and Childsplay, AZ. Ms. Schuld teaches in the MFA and BFA programs at the University of Illinois at Urbana-Champaign. She earned her M.F.A in Acting from Rutgers University, is a Designated Linklater Teacher, a Certified Teacher of the Knight-Thompson Speechwork, and a National Michael Chekov Association Teaching Candidate.

Stage Managers

JAMIE K. FULLER — stage manager (*Midsummer*) — is delighted to return to the Festival for her fourth season. Originally from Henry, IL, and a product of the University of Illinois's M.F.A. Stage Management program, Jamie spends the rest of the year working on her Minnesotan accent and both stage managing and ASming for Minnesota Opera. Favorite credits: *Peter and the Starcatcher* (Illinois Shakespeare Festival), *The Shining* (Minnesota Opera), *The Elixir of Love* (Lyric Theatre at Illinois), & *Cymbeline: A Folk Tale with Music* (First Folio). She would like to thank her parents for their amazing support, comedic timing, and willingness to leave Florida to see her shows. www.jamiekfuller.com

COLT LUETDKE — stage manager (*Cymbeline*) — is excited to be returning to the Illinois Shakespeare Festival for his third season. His previous credits at ISF are *Rodeo* (SM), *Twelfth Night* (ASM), *Love's Labour's Lost* (ASM/ intern), *Love's Labor's Won* (Run Crew), and assistant to the managing director. Colt recently graduated from Carthage College with a B.A. in Theatre Production (Stage Management Emphasis) and Music. His favorite collegiate credits include *The Mystery of Edwin Drood* (SM), *Urinetown* (SM), and *The Invisible Hand* (SM).

JAYSON T. WADDELL — festival production stage manager/ stage manager (*Juliet*) — is proud to return to the Illinois Shakespeare Festival for his 7th season! He has had the pleasure of working on many productions such as (Alliance Theatre, GA) *Troubadour*, *Moby Dick*, *Born for This*, *Tuck Everlasting*, *The Geller Girls*, *A Christmas Carol*, *Ghost Brothers of Darkland County*, *Broke*, *Sex and the Second City*, *Next to Normal*, *Holidays With the Chalks*, and *Bike America*; (Atlanta Lyric Theatre) *Jesus Christ Superstar*, *The Full Monty* and *Young Frankenstein*; (Illinois Shakespeare Festival) *Hamlet*, *Q Gents*, *Antony & Cleopatra*, *Macbeth*, *As You Like It*, *Twelfth Night* and *A Winter's Tale*. Jayson is a graduate of the Gainesville Theatre Alliance (Georgia) and a proud member of Actors' Equity Association.



Proudly Supports



ILLINOIS
SHAKESPEARE
FESTIVAL

1610 R. T. Dunn Dr. • Bloomington, IL
309-823-9115

1408 S. Main St. • Normal, IL
309-452-5327

monsterpawn.com



Plumbing Contractor New Construction & Service

Contractor License #055-006530

P.O. Box 3395, Bloomington, IL 61701
Office (309) 820.9791 ~ Fax (309) 828.0381

Jeff Brown

Cell (309) 275.7695

jb@pipeworksinc.com

Erik Graybeal

Cell (309) 275.7693

eg@pipeworksinc.com

Visit us at: www.pipeworksinc.com

Festival Leadership



WILLIAM PRENEVOST — managing director — William joined the Illinois Shakespeare Festival in January 2017. Prior to his position with the Festival, Prenevost was a senior consultant with Arts Consulting Group, a national agency. Previously, Prenevost served as the managing director of the Kansas City Repertory Theatre, an in-residence professional theatre at the University of Missouri at Kansas City (UMKC). With over 25 years of experience in arts management and fundraising, his career includes positions as director of marketing and communications for Northlight Theatre in Chicago, Boston's Huntington Theatre Company, the Cleveland Play House, and the Cleveland Museum of Art. Prenevost is an alumnus of Illinois State University.



KEVIN RICH — artistic director — Kevin began working at ISF in 2009 as an actor, and has appeared in such roles as Puck in *A Midsummer Night's Dream*, Richard in *Richard III*, and Porthos in *The Three Musketeers*. Additional experience includes Milwaukee Shakespeare, Chicago Shakespeare, Kentucky Shakespeare, Portland Center Stage, Yale Rep, and the American Theatre Company. His series of Shakespeare abridgements, *The Billy Shakespeare Project*, will be a centerpiece of the educational and community outreach effort here at ISF. Kevin currently is a faculty member at Colorado University in Boulder. He is member of AEA and SAG-AFTRA, a Certified Associate Teacher of Fitzmaurice Voicework®, the 2010 ISF John Stephens Equity Actor, and a recipient of the Oliver Thorndike Acting Award at the Yale School of Drama.



JANET WILSON — festival producer — is the Director of the School of Theatre and Dance and Producer of the Illinois Shakespeare Festival. Prior to joining the acting faculty at Illinois State University in 2001, she was a professional actor in New York City. While earning her M.F.A. from Virginia Commonwealth University, she developed a research interest in contemporary women playwrights. She has directed over 35 productions and is a published and produced playwright. In February 2017, Janet was invited to serve as the lead facilitator for the University Resident Theatre Association (URTA) on their recent contract negotiation with Actors' Equity Association in New York City.

UPTOWN NORMAL

visit UptownNormal.com for details on parking, business info and events!



NORMAL THEATER

Normal's home for classic, independent, and foreign films and live events.



CHILDREN'S DISCOVERY MUSEUM

Explore, imagine, create, and play with three floors of amazing hands-on exhibits.



Festival Personnel

Directing

ANDY PARK director (*Cymbeline*)
ROBERT QUINLAN director (*Midsummer*)
KEVIN RICH director (*Juliet*)
KRISTIN L. SCHOENBACK asst. director (*Midsummer*), director (*Comedy of Errors*)
ENRICO SPADA asst. director (*Cymbeline*), director (*Sleeping Beauty*)
JOHN TOVAR festival fight director
PAIGE BRANTLEY combat asst.
THOMAS RUSSELL combat asst.

Stage Management

JAYSON T. WADDELL production stage manager, stage manager (*Juliet*)
JAMIE K. FULLER stage manager (*Midsummer*)
COLT LUEDTKE stage manager (*Cymbeline*)

ANDIE ANTONIK asst. stage manager (*Cymbeline*), stage manager (*Comedy of Errors*)

EMILY QUICK asst. stage manager (*Juliet*), stage manager (*Sleeping Beauty*)

KYLE WINKELMANN asst. stage manager (*Midsummer*)

SAVANNAH CATHERS intern

MARISOL COWAN intern

ALLIE NICHOLSON intern

Design Staff

NICHOLAS HARTMAN costume design (*Cymbeline*)

JOE C. KLUG festival scenic design

CHRISTINA LEINICKE costume design (*Juliet*)

KIERAN PEREIRA festival sound designer

DAN OZMINKOWSKI festival lighting designer

KALEY PRUITT choreographer

KARI BETH RUST costume designer (*Sleeping Beauty*)

TYLER WILSON costume design (*Midsummer*)

Text and Literary Staff

SUSAN SCHULD voice and text coach
TREASURE RADICE literary associate

Scene Shop Staff

JEREMY JENKINS technical director
DAVE GEORGE asst. technical director
ROB FULTON welder/carpenter
JARED HANSEN carpenter/welder
KIARA IRIZARRY scenic intern
NICK KILGORE install/change over supervisor
JAKE LAMBERT carpenter/run crew
SLU MALDONADO-STONE carpenter/welder
ANDRE PAYNE-GUILLORY scenic intern

Electrics & Sound Staff

JOSH FOXHOVEN SOTD supervisor
ERICA MAHOLMES master electrician



Majestic Interior Design

www.majesticinteriordesign.com

309.663.7828

MORGAN BRENNAN electrics/sound board operator-Ewing

KAYLA BROWN ame/board operator-Ewing

MICHELLE BROWN electrics intern

NAOMI KIBLER ame/board operator-Westhoff

NICK MYRVOLD sound engineer - Westhoff

DEVON RODLUND electrics intern

EMILY SNELL electrics intern

Paint & Properties Staff

SAM GRIBBEN scenic charge artist

BRIGID BURGE prop master

CLAIRE BUCHANAN scenic artist

ALEXANDREA HESS props artisan

KAYLIE HENDERSON scenic artist intern

ALLISON LITKE props artisan

JESSICA SCHLOSKEY props artisan

SIMONE TEGGE scenic artist

KATIE TORRETTI props artisan

Costume Staff

KARI BETH RUST costume director

J. WENDY WALLACE costume craft supervisor

GRETCHEN HALLE asst. costume designer (*Midsummer*)

AMANDA VANDER BYL asst. costume designer (*Cymbeline*)/Ward Supervisor

MEGAN WOOD asst. costume designer (*Juliet*), designer (*Sleeping Beauty*)

DANIEL BALSAMO craft intern/wardrobe

SAMANTHA COLE costume technician

LAURA DAMATO craft technician

JULIA DEUTSCH craft technician

MJ HALL first hand

DANNA GOODMAN costume intern

JESSICA HENSLEY first hand

LEXI HOWE costume technician

ALYSSA JANCO costume technician/wardrobe

EMILY KINASZ costume technician/wardrobe

CAROLINE KNESE costume intern

ANITA PACKWOOD costume technician

LINDSAY RECKNAGEL cutter/drapers

MARY ROGERS first hand/wardrobe

JANELLE SMITH costume technician

KERA STORRS cutter/drapers

JENN ROGERS costume technician/wardrobe

JESSICA WICKLINE costume technician

HALEY WILLIAMS costume intern

Company Management Staff

MEGAN HOEPKER company manager

SARAH FORD company manager intern

Audience Services Staff

GINA SANFILIPPO retail manager

DENISE CARDARELLI front operations coordinator

DAVID HANSEN house manager

MADDIE CALAIS front of house

SARAH FORD audience services

JESS FOUST front of house

MATT FREDERICK audience services

CHRISTIAN FRIEDEN front of house

TARA KLEIN audience services

HANNAH KROONBLAWD front of house

BRUCE LANIGAN front of house

HANNELORE ROLFING front of house

AMANDA RUTKOWSKI audience services

SIMRAN SACHDEV audience services

ALEX SIMKO audience services

CHRISTIAN STRANGE front of house

JOSH TOLLEY audience services

LIBBY ZABIT front of house

Box Office Staff

KRISTEN NESVACIL box office manager

DREW BURNINGHAM asst. box office manager

ANTHONY HARDEN ticket agent

BRADEN POAPST ticket agent

EMILY QUICK ticket agent

HANNAH SONS ticket agent

MEGAN WUNGLUECK ticket agent

Marketing Staff

CHELSEY EIMER director of community engagement

WESLEY BEACH social media manager

PETE GUITHER production photographer

CARLA LEBER society events

AARON THOMAS filmographer

Carl's
Ice Cream 

AVAILABLE ON-SITE AT EWING!

JUNE 29, JULY 1, 6, 20, 22, 23, 27 AND AUG. 10, 12.

ALSO PROVIDED FOR WEDNESDAY POST-SHOW ICE CREAM SOCIALS!

Radisson®
NORMAL

Illinois Shakespeare Festival Donors

Thank you to all of our generous supporters for contributions made to the Illinois Shakespeare Festival Endowment, the Shakespeare Festival Society annual campaign, and the John Stevens Memorial Golf Outing! This list represents cumulative giving (including pledges) donated for the 2017 40th season (list is as of May 31, 2017). For more information about how to make a gift or to include the Festival in your will, please contact Jane Walsh, Director of Development, College of Fine Arts at (309) 438-7735 or jlwals2@ilstu.edu.

\$35,000+

The Snyder Companies

\$25,000+

Ann Durand, PhD

Susan J. Silvey, PhD

John N. & Nancy J. Stevens
Donor Advised Fund

\$20,000+

Stare Farm Companies
Foundation

\$10,000+

John A. & Laura R. Dirks

David & Deborah Fedor

\$5,000+

Paul & Sandra Harmon

Barbara W. Meek Trust

Jerry & Carole Ringer

\$1,000+

John & Sharon Amdall

J. Gordon & Sandra Bidner

Anita Carney

Stephen & Anne Matter

Priscilla Matthews

Gigi & Frank Miles

Phares & Harriet O'Daffer

Craig Sutter

Judy Swiger

Masako Takayasu

Robert Widmer

Ruel and Judy Wright

\$500+

Anonymous

Allan and Janice Bates

Timothy & Windy Duffy

James & Susanne

Edmondson

Lawrence & Christine Eggan

Jan Elfline & Drake

Zimmerman

George & Myra Gordon

Charles & Victoria Harris

Kim & Colleen Kannaday

John & Stacie Killian

Christie Lau

Deborah & Walter Lindberg

John & Barbara Meek

Susan & Michael O'Rourke

Clyde & Sharon Reynolds

Joan Richards

Rolly Turner

Leann Seal

The Vein Specialists, LLC

Steven & Deb Wannemacher

Janet & Glenn Wilson

\$250+

Shelley & B. McLean Arnold

B. McLean Arnold-Attorney
at Law

Sara Bailey

Brad Brenneman & Shelley
Carter

Mark & Julie Brownlee

Carol & Gerry Chrisman

Chad & Lisa Clover

Commerce Bank, NA
(Missouri)

Deneen & Deneen

Larry & Marlene Dietz

Charles & Patricia Erickson

Edith Franklin

John Freed

Friends of Dan Brady

Peter Geddeis

Jennifer & Travis Gibson

Patricia Grogg

Alan Hallene

Jeffrey & Leslie Hecht

Connor Herbeck

Joy Hutchcraft

Rod & Dee Matthews

Stephen & Patricia McManus

Christopher & Nancy
Murtaugh

Gregory and Holly Orłowski

Catherine & James Palmer

Charles & Susan Proesel

John & Susan Ramsey

John & Kathy Rennick

Scott & Janis Reynolds

Linda and Terrence Schaefer

William Semlak & Joani
Moore

Mary & William Shepherd

The Snyder Corporation

M. David and Kathryn
Snyder

Nancy and Stephen Snyder

Clinton Soper

Sprague Incorporated

Laurie and Mark Sprague

Dennis & Linda Steele

Suzi Davis Travel

Tim Tyler

Phylis VerSteegh

James Zaleschuk & Susan
Hillabold

\$50+

Anonymous

John Albright

Allan H. Bates-Northwestern
Mutual Insurance

Jerry Antonini

Amy Armstrong

David & Janet Baker

Carol & Bruce Barry

Jean & Gary Baumhardt

Richard & Mary Jane Beal

Allan & Lois Bell

Karen & Wallace Bergmann

The Illinois Shakespeare Society

Founded in 1982 by persons interested in enhancing the Illinois Shakespeare Festival, the Society is a membership organization made up of individuals and businesses who see the Festival as an important cultural resource for Bloomington-Normal, McLean County, and all of Central Illinois. The Society has developed an active membership which has been essential to the Shakespeare Festival's continued growth and increasing artistic quality.

We thank the volunteer Board of Directors of the Illinois Shakespeare Festival Society for their personal and professional leadership contributions to the Festival. Tireless supporters, these dedicated members of our arts community help promote the Festival and also hold special events to raise the funds that make the Festival possible each year.

Judie Bey
Richard & Penny Boser
Bruce & Jeannie Breitweiser
Nancy & Thomas Brokaw
Daniel & Kathy Brown
Anthony and Suzanne Bykowski
Richard Brown
Terri Cameron
Phillip Chastain
Kendall Childs
Mary Clevendon
Laura & David Coe
John and Sue Concklin
E. Paula Crowley and Daniel Deneen
John & Yuki Danenberger
Valorie Daniels
William & Mary Denham
David & Joanne Dowell
Stephanie Drake
John and Jana Edmondson
E. Graham & Kathleen Evans
John and Dianne Farnsworth
Teri Fink
Nancy Fuchs
Susan Gambino
Ann & John Garrett
Mabel Gast
Michael Gernant
James & Mary Gill
Thomas Grogg
Peter Guither
Michelle Harris
Nicholas Hartman
Marianna & Jonathan Hasse
Barbara and Robert Hathway
Ann Haugo & Steve Pelphrey
Kay Heinrichs
Charles Johnson
Harold & Kathy Johnson
Veronica Kafer
Susan Kelsch
Meredith & Steven Knitter
Christine & Matthew Kubiak
Michael and Dawn Laffey
Janet and James Lagocki
Lynda Lane
Cynthia & Alan Langrall
Paul and Jane Leder
Danny and Paula Leifel

Deborah & James Light
Kathleen & Kerry Lonbom
Patricita Ludewig
Leonard Makowski
P. Douglas and Mary Lee Matthews
Jean Miller
Constance and William Mueller
Joan & Kenneth Newgren
Denis & Jennifer O'Shea
P. Dalton Interiors, Inc.
Kari & Steve Pantol
Paul Leder-Farm Account
John Porter
Sharon Prokuski
Christopher Quinn
Muriel Riddle
Gary and Patricia Scheets
Paula Shotwell
Robert Smith
Roland Spies
Robert & Karen Starckovich
Sandra & Orrin Stemler
James & Ruthann Stevens
Ron and Shirley Streib
James & Jeannie Swanson
Tom Brokaw State Farm Insurance
Edward Treadwell
Aaron & Sarah Vaughn
John and Elena Velde
Marilyn & David Wallach
Mary & Michael Wallace
Marolyn Weber
Gina and Eitan Weltman
Peter Whitmer
Benjamin Young
Charles & Gwendolyn Yurici
Karen Zook
Benjamin Zuraw

Hole Sponsorships

Arnold Law Office
Charles Erickson, Law Offices
Christopher & Nancy Murtaugh
Drake Zimmerman
Greg & Holly Orlowski
Heartland Bank
ISF Board

Jerry Ringer
Kim & Colleen Kannaday
Larry & Marlene Dietz
Laurie Wallace Design Services
Phi Delta Theta
The Snyder Companies
State Representative Daniel P. Brady
Steven & Deb Wannemacher
Suzi Davis Travel
The Vein Specialists, LLC
Tony & Dee Soper

In-Kind Donors

Advocate BroMenn Health & Fitness Center
Baxter's
Beer Nuts
Brad Barker Honda
Casey's Garden Shop & Florist
Chicago Shakespeare Company
Dr. Jack & Joan Capodice
Epiphany Farms
Ewing Manor
Five Miles East
Forget-me-not Florists
Four Seasons Health Club
Fox & Hounds
Garlic Press
Glenn Wilson & Cal Hubbard
Gold's Gym
Illinois Symphony Orchestra
Ironwood Golf Course
ISU Athletics
Jenni's Salon and Spa
Medici
Nancy Stevens
Niepagen Greenhouses & Garden Center
Orange Leaf
Our Favorite Things Boutique
Pepsi
Polished
Rosie's
Solid Gold Jewelers
Stave Wine Bar
Vitesse Cycle Shop

Festival Sponsors



StateFarm



Paul & Sandra Harmon



VisitBN

BLOOMINGTON-NORMAL AREA CONVENTION & VISITORS BUREAU
800.433.8226 | VisitBN.org



Production History

1978—As You Like It, Macbeth, Twelfth Night
1979—Hamlet, King Henry IV part 1, The Taming of the Shrew
1980—The Merry Wives of Windsor, A Midsummer Night's Dream, Romeo and Juliet
1981—The Comedy of Errors, Julius Caesar, The Winter's Tale
1982—King Henry IV part II, Love's Labour's Lost, Othello
1983—Macbeth, Much Ado About Nothing, The Two Gentlemen of Verona
1984—Pericles, The Merchant of Venice, The Taming of the Shrew
1985—Cymbeline, King Lear, A Midsummer Night's Dream
1986—As You Like It, Hamlet, The Tempest
1987—Measure for Measure, Romeo and Juliet, Twelfth Night
1988—All's Well That Ends Well, The Comedy of Errors, Richard III
1989—Henry V, The Merry Wives of Windsor, She Stoops to Conquer *by Oliver Goldsmith*
1990—Julius Caesar, Much Ado About Nothing, The Rivals *by Richard Brinsley Sheridan*
1991—Antony and Cleopatra, Othello, The Taming of the Shrew
1992—Macbeth, As You Like It, The Winter's Tale
1993—Richard II, Pericles, A Midsummer Night's Dream
1994—Romeo and Juliet, Two Gentlemen of Verona, Henry IV pt 1
1995—Cymbeline, Henry IV part 2, The Comedy of Errors
1996—Twelfth Night, The Tempest, The Triumph of Love *by Marivaux*
1997—Hamlet, All's Well That Ends Well, Rosencrantz & Guildenstern are Dead *by Tom Stoppard*
1998—Much Ado About Nothing, Measure for Measure, The Falcon's Pitch *adapted by Jeffrey Sweet*
1999—The Merry Wives of Windsor, Richard III, Wild Oats *by John O'Keeffe*
2000—Taming of the Shrew, King John, The Three Musketeers *adapted by Eberle Thomas & Barbara Redmond*
2001—Love's Labour's Lost, Othello, Coriolanus
2002—A Midsummer Night's Dream, Romeo and

Juliet, The Merchant of Venice

2003—King Lear, As You Like It, The Knight of the Burning Pestle *by Francis Beaumont & John Fletcher*

2004—The Two Gentlemen of Verona, Cyrano de Bergerac *by Edmund Rostand*, Hamlet

2005—Macbeth, Twelfth Night, Henry VIII

2006—The Comedy of Errors, Pericles, Julius Caesar

2007—Much Ado About Nothing, Henry V, Love's Labour's Lost

2008—The Taming of the Shrew, Titus Andronicus, The Complete Works of William Shakespeare (Abridged) *by Adam Long, Daniel Singer, & Jess Winfield*

2009—A Midsummer Night's Dream, Scapin adapted by Bill Irwin and Mark O'Donnell, Richard III

2010—The Tempest, The Three Musketeers *adapted by Robert Kauzlaric*, The Merry Wives of Windsor

2011—Romeo and Juliet, The Winter's Tale, The Complete Works of William Shakespeare (Abridged) *by Adam Long, Daniel Singer, & Jess Winfield*

2012—As You Like It, Othello, The Rivals *by Richard Brinsley Sheridan*

2013—Comedy of Errors, Macbeth, Failure: A Love Story *by Philip Dawkins*

2014—Much Ado About Nothing, Elizabeth Rex by Timothy Findley, Antony and Cleopatra

2015—Love's Labour's Lost, Richard II, Q Gents *by GQ and JQ*, Love's Labour's Won *by Scott Kaiser*

2016—Hamlet, Twelfth Night, Peter and the Starcatcher *by Rick Elice*



TEL. 309/663-0555
FAX 309/663-0556
email:dendens@ilaw202.com

DANIEL G. DENEEN

ATTORNEY & COUNSELOR AT LAW

CONCENTRATION ON WILLS, PROBATE & COMMERCIAL LAW

207 W. Jefferson

Suite 603

P.O. Box 3575

Bloomington, IL 61702-3575

Public Administrator and Public Guardian of McLean County, Illinois

**Don't perform a job
you don't enjoy.**

**LET US PERFORM
IT FOR YOU!**

Complete House Cleaning Services

Weekly, Bi-Weekly & Monthly Schedules

**THE
CLEANING
GUY**

Full Maid Service Move In | Move Out
Garage & Basement Cleanouts
Evictions | Rentals New Construction
Pre & Post Event Cleanings



309.663.1234
www.thecleaning-guy.com



Important Information

- The taking of pictures or making recordings of any kind are not allowed in the theatre.
- Glass bottles, open containers, coolers, strollers, and picnic baskets are not allowed in the theatre.
- Patrons must refrain from walking on the stage.
- Latecomers will not be seated until a suitable break in the play's action at the discretion of the house manager and only in seats chosen by the house manager.
- Please silence cell phones and other electronic devices. If you need to be reached for an emergency, the house manager will assist you.
- For family emergencies, call (309) 438-0716.
- Smoking is not allowed anywhere on the Ewing Cultural Center grounds.
- For your own safety when at Ewing, be sure to cross the street only at the corner crosswalk at the light. Please do not walk over to Sunset Road to cross after the performance.

Rain/Heat Policy

The Festival will make every effort to notify patrons if a performance needs to be canceled due to inclement weather prior to the start of the show, including posting to the website and Facebook page. The Festival performs through light showers. Should any outdoor performance be rained out before the first intermission, patrons may exchange their tickets for another performance within two business days. If a performance is stopped after the first intermission, the evening will be considered complete and no ticket exchanges will be possible.



NORMAL PUBLIC LIBRARY
FOUNDATION
Growing With You



The Company Thanks You!

Thanks to these community businesses who supported the 2017 Illinois Shakespeare Company with their generous discounts!



SUGAR MAMA
BAKERY

Special Thanks

Illinois State University Advancement staff
Grounds & Facilities Management staff
Ewing Cultural Center and Genevieve Green Gardens:

Toni Tucker (director), Ashley Jobson, Heather Vozzella, Mike McCoy, and Jay Fitzgerald
Craig Sutter for his support of the Ice Cream Socials
Josh Foxhaven
Bloomington Pediatrics and Allergy
Minnesota Opera
Jenn Maatman
Bradley University Dept of Theatre

“*Love* OF BEAUTY IS TASTE.

THE CREATION OF *Beauty* IS ART.”

-RALPH WALDO EMERSON



TWIN CITY
PLASTIC SURGERY

*Proud Supporter
of the Arts*

Dr. Laura C. Randolph
Dr. Paige C. Holt Dr. Chad Tattini

(309) 662-6772 • www.twincityplasticsurgery.com • 2502 E. Empire St, Suite C • Bloomington, IL



Larry Dietz, president
Jan Murphy, provost and vice president for
Academic Affairs
Daniel Stephens, vice president for Finance &
Planning
Levester Johnson, vice president for Student Affairs
Pat Vickerman, vice president for University
Advancement

IllinoisState.edu



Jean M. Miller, dean, College of Fine Arts
Jane Walsh, director of development
Laurie Merriman, assistant dean
Janet Tulley, assistant dean
Mike Wille, director, School of Art
Aaron Paolucci, director, Arts Technology Program
Stephen Parsons, director, School of Music
Janet Wilson, director, School of Theatre and Dance
Barry Blinderman, director, University Galleries
Kristen Nesvacil, front of house manager, Center for
the Performing Arts
Stephanie Kohl Ringle, business and
communications associate

School of Theatre and Dance staff:

Carla Leber, Courtney Grose, Michelle Woody

FineArts.IllinoisState.edu

Sue Silvey, president
Dave Fedor, vice president
Cheryl A. Hussain, secretary

Emmanuel Calmes
Anita Carney
Tony Coletta
John Dirks
Ann Durand
Larry Egan
Jonathan Green
Jay-James Miller
Jean M. Miller
William Prenevost
Clyde Reynolds
Kevin Rich
Jerry Ringer
Elaine Shung
Nancy Stevens
Toni Tucker
Jane Walsh
Janet Wilson
Kimberly Weeks





40 SEASON CELEBRATION

AUGUST 18, 2017

DoubleTree Hotel Ballroom

Entertainment, special guests, retrospectives and awards.

6:00 Reception · 7:00 Dinner · 8:00 Program

\$100/person · Cash bar

Limited seating. RSVP by August 10, 2017

Tickets available online or by mailing a check (payable to the ISF foundation)
to ISF Benefit Dinner, Campus Box 5700, Normal, IL 61761