



Presumption of guilt for T cells in type 1 diabetes: lead culprits or partners in crime depending on age of onset?

Alexia Carré¹ · Sarah J. Richardson² · Etienne Larger^{1,3} · Roberto Mallone^{1,3}

Received: 6 June 2020 / Accepted: 20 August 2020
© The Author(s) 2020

Abstract

Available evidence provides arguments both for and against a primary pathogenic role for T cells in human type 1 diabetes. Genetic susceptibility linked to HLA Class II lends strong support. Histopathology documents HLA Class I hyperexpression and islet infiltrates dominated by CD8⁺ T cells. While both hallmarks are near absent in autoantibody-positive donors, the variable insulinitis and residual beta cells of recent-onset donors suggests the existence of a younger-onset endotype with more aggressive autoimmunity and an older-onset endotype with more vulnerable beta cells. Functional arguments from ex vivo and in vitro human studies and in vivo ‘humanised’ mouse models are instead neutral or against a T cell role. Clinical support is provided by the appearance of islet autoantibodies before disease onset. The faster C-peptide loss and superior benefits of immunotherapies in individuals with younger-onset type 1 diabetes reinforce the view of age-related endotypes. Clarifying the relative role of T cells will require technical advances in the identification of their target antigens, in their detection and phenotyping in the blood and pancreas, and in the study of the T cell/beta cell crosstalk. Critical steps toward this goal include the understanding of the link with environmental triggers, the description of T cell changes along the natural history of disease, and their relationship with age and the ‘benign’ islet autoimmunity of healthy individuals.

Keywords Autoantibodies · Autoimmunity · Beta cells · Endotypes · HLA · Immunotherapy · Insulinitis · Islets · Pancreas · Review · T cells

Abbreviations

DiViD	Diabetes Virus Detection Study
EADB	Exeter Archival Diabetes Biobank
FOXP3	Forkhead box P3
HLA-I	HLA Class I
HLA-II	HLA Class II
ICI	Insulin-containing islet

IGRP	Islet-specific glucose-6-phosphatase catalytic-subunit related protein
MHC-I	MHC Class I
nPOD	Network for Pancreatic Organ Donors with Diabetes
TCR	T cell receptor
T1DE1	Type 1 diabetes endotype 1
T1DE2	Type 1 diabetes endotype 2
Treg	Regulatory T cell

Electronic supplementary material The online version of this article (<https://doi.org/10.1007/s00125-020-05298-y>) contains a slideset of the figures for download, which is available to authorised users.

✉ Roberto Mallone
roberto.mallone@inserm.fr

✉ Sarah J. Richardson
s.richardson@exeter.ac.uk

¹ Université de Paris, Institut Cochin, CNRS, INSERM, Paris, France

² Institute of Biomedical and Clinical Science, University of Exeter Medical School, Exeter, UK

³ Assistance Publique Hôpitaux de Paris, Hôpitaux Universitaires de Paris Centre-Université de Paris, Cochin Hospital, Service de Diabétologie et Immunologie Clinique, Paris, France

Introduction

While type 1 diabetes is described as a T cell-mediated autoimmune disease, a more holistic view comprising the dialogue between T cell aggressors and beta cell targets is gaining credit. On one hand, this novel view underlines the active pathogenic role played by beta cells (reviewed in [1]) and on the other, it calls for a critical reappraisal of the role of T cells, which we address here. We contend that evidence for a primary or exclusive role of T cells is variable and probably reflects a balance with mechanisms of beta cell dysfunction that

underlie different disease subtypes (endotypes) [2]. These endotypes may thus feature T cells as either ‘lead culprits’ or ‘partners in crime’ for beta cell destruction. We will review arguments for and against T cell-mediated mechanisms (summarised in Fig. 1), link them to age-related endotypes, and propose future directions to settle these questions.

Genetic evidence

For Type 1 diabetes susceptibility and protection are strongly associated with HLA Class II (HLA-II) and, to lesser extent, HLA Class I (HLA-I) loci [3], with *HLA-DQB1*06:02* exerting a dominant protection. Given the antigen-presenting function of

HLA molecules, these associations support a role for T cells. Several other disease-associated gene variants regulate T cell responses (e.g. *PTPN22*, *IL2RA*, *CTLA4*) [3]. Moreover, disease-associated, and likely causal, genetic variants are enriched in open chromatin (i.e. accessible for transcription) specifically in immune cells, particularly in CD4⁺ effector T cells [4]. The rare genetic poly-autoimmune syndromes immune dysregulation, polyendocrinopathy, enteropathy, X-linked (IPEX) syndrome (*FOXP3* mutations) and autoimmune polyendocrinopathy, candidiasis, ectodermal dystrophy (APECED) syndrome (*AIRE* mutations) affect T cell tolerance mechanisms and can comprise type 1 diabetes. Genetically imprinted, age-related disease endotypes may exist, as younger (<13 months old) children more frequently carry *HLA-DR4/DQ8*

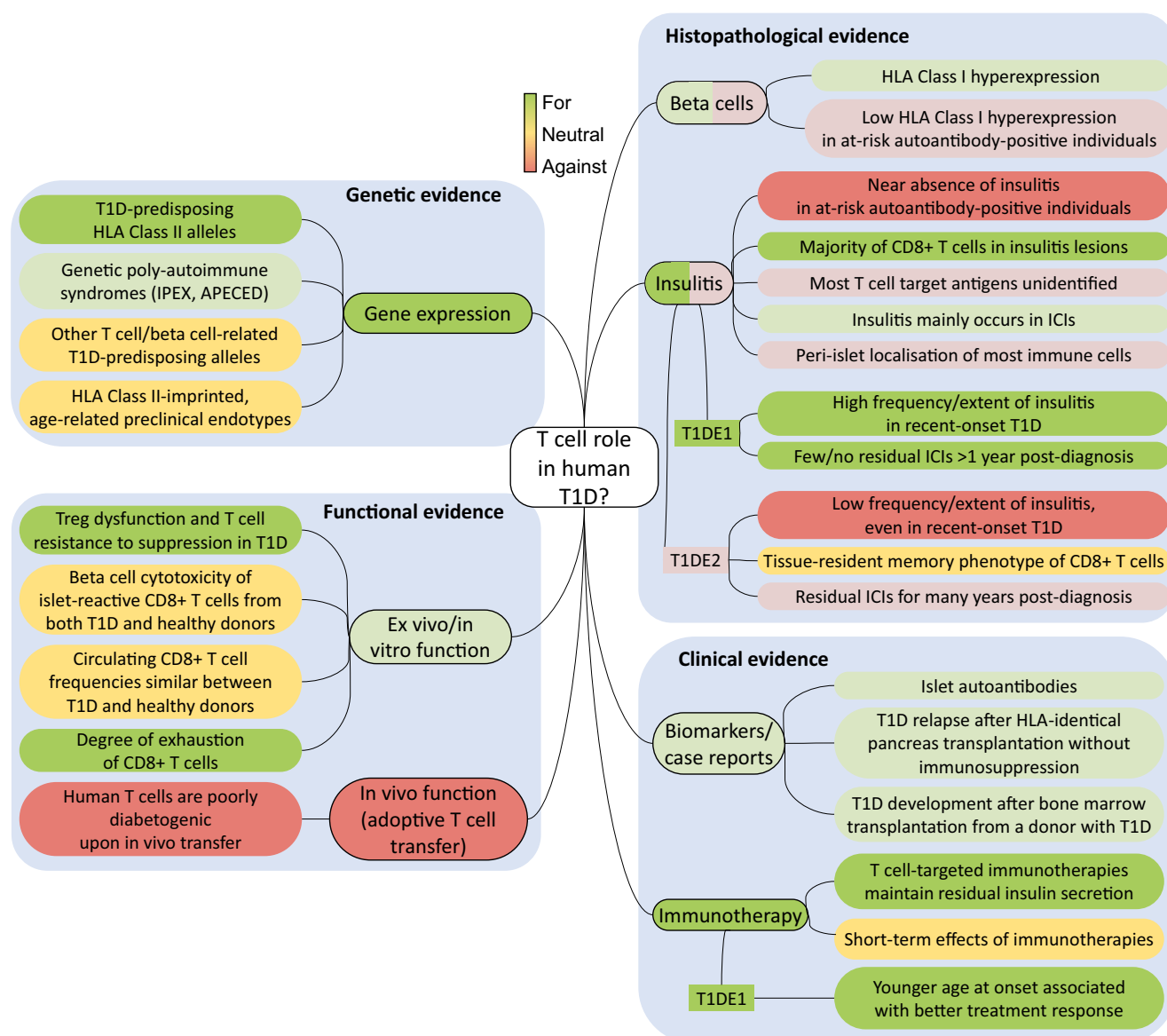


Fig. 1 Evidence for or against a primary pathogenic role for T cells in human type 1 diabetes (T1D). APECED, autoimmune polyendocrinopathy, candidiasis, ectodermal dystrophy (syndrome); IPEX, immune

dysregulation, polyendocrinopathy, enteropathy, X-linked (syndrome); This figure is available as part of a [downloadable slideset](#)

and first seroconvert for anti-insulin autoantibodies (IAA), while older children (>40 months old) more often carry *HLA-DR3/DQ2* and present with anti-GAD at first seroconversion [5].

Against Although several disease-predisposing alleles are expressed in beta cells and modulate islet inflammation [1], their contribution to disease predisposition is rather small, suggesting a modulatory rather than driving role. Interestingly, HLA-II-imprinted endotypes influence seroconversion [5] but do not strongly affect age of onset [6], clinical progression or C-peptide loss post-diagnosis [7], indicating that other genetic and/or acquired factors determine the progression rate of beta cell damage.

Summing up: The genetics of type 1 diabetes suggests an involvement of T cells.

Histopathological evidence

For HLA-I hyperexpression on beta cells [8, 9] suggests a role for CD8⁺ T cells. The second histopathological hallmark is the presence of immune infiltrates (insulitis) dominated by CD8⁺ T cells, followed by CD68⁺ macrophages, CD20⁺ B cells and CD4⁺ T cells [10–13]. Scattered neutrophils are also observed throughout the pancreas [14, 15] and evidence of dysregulated systemic innate immunity has been consistently reported, even before autoantibody seroconversion [14]. The relative under-representation of CD4⁺ T cells and the near absence of regulatory T cells (Tregs) may reflect an earlier, more peripheral role (e.g. in pancreatic lymph nodes), while the over-representation of CD8⁺ T cells may reflect a final effector role in beta cell destruction.

Studies on the Exeter Archival Diabetes Biobank (EADB) documented that insulitis of donors with recent-onset type 1 diabetes differs according to age [13, 16, 17], suggesting the existence of two endotypes with different pathogenic mechanisms (Fig. 2): type 1 diabetes endotype 1 (T1DE1), in individuals with onset at age <13 years; and type 1 diabetes endotype 2 (T1DE2), mostly occurring in individuals diagnosed at ≥13 years of age. T1DE1 is characterised by a CD20^{high} insulitis rich in CD8⁺ T cells, few residual insulin-containing islets (ICIs; indicative of residual beta cells) and evidence of abnormal insulin processing in the remaining beta cells. In contrast, T1DE2 displays a CD20^{low} insulitis with fewer CD8⁺ T cells, more residual ICIs and normal insulin processing. Recent-onset (<6 month) CD20^{high} donors have a median of 78% of insulitis-positive ICIs (range 19–100%; *n* = 20), vs 14% (range 0–52%; *n* = 19) in CD20^{low} donors (SJR, unpublished data). In line with

this endotype view, the frequency of insulitis within 1 month of diagnosis is 73% in young donors with type 1 diabetes (<14 years old, likely to be mostly T1DE1) [18] and the parallel reduction in residual ICIs may indicate an aggressive beta cell destruction. In contrast, insulitis within 1 month from diagnosis is less frequent (29%) in older donors (15–40 years old, likely T1DE2) and long-term ICI preservation suggests reduced aggressiveness [19].

Against If viewing type 1 diabetes as a single disease, the histopathological evidence for a critical T cell involvement is unconvincing. Immune infiltrates are limited, as exemplified by the debate on the diagnostic definition of insulitis being the presence of ≥15 immune (CD45⁺) cells/islet in ≥3 islets [20, 21]. This definition should be interpreted by considering the following points: (1) 15 immune cells/islet is only twice the number found in non-diabetic donors [10]; (2) it does not account for differences in islet size (i.e. the insulitis density); (3) infiltrated islets are typically few (<10%) and found in a minority (~20%) of donors [18, 22]; (4) peri-islet, non-invasive insulitis is more common [19]; and (5) lymphocytes are also found scattered in the exocrine tissue, even in autoantibody-positive non-diabetic donors [12]. Moreover, insulitis is mostly confined to ICIs (33% vs 2% in non-ICIs) and beta cell area and mass are higher in donors with type 1 diabetes with insulitis than in those without insulitis [22]. These patterns may indicate that immune cells leave the islets once beta cell destruction is complete.

These findings become more convincing when interpreted according to age-related endotype differences. However, a major bias is introduced by the specimens available, which are very limited for children with recent-onset type 1 diabetes because, fortunately, very few still die close to disease onset. For instance, the Network of Pancreatic Organ Donors with Diabetes (nPOD) has collected only one such specimen since 2007. In contrast, most tissues are available for T1DE2 donors with older-onset type 1 diabetes (i.e. those with weaker evidence for a major T cell role). In most studies, age-related endotype differences are further blurred by the analysis of specimens from individuals with overall long disease durations, which, together with age, influence the extent of insulitis and the number of residual ICIs. For instance, the frequency of insulitis in young donors with type 1 diabetes (<14 years old) drops from 73% within 1 month of diagnosis to 4% beyond 1 year [18]. Thus, even for the younger histopathological T1DE1 with stronger evidence for a major T cell role, key hallmarks have likely waned in most long-standing diabetes specimens available. Together with the focus of most studies on older-onset donors, these limitations may bias our view against T cells.

The bias of long disease duration is absent in the Diabetes Virus Detection Study (DiViD), which collected surgical pancreas specimens from living adults with new-onset disease

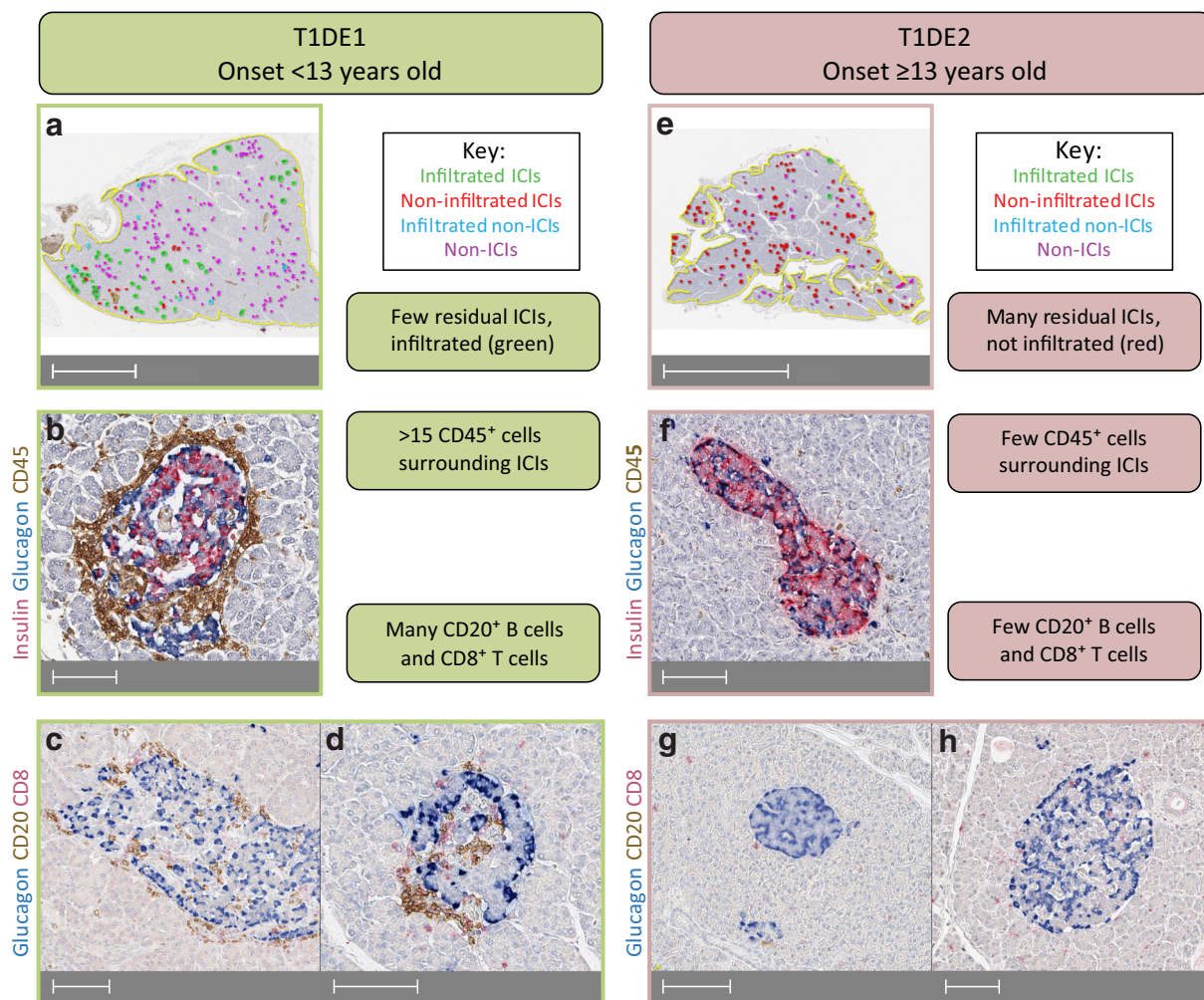


Fig. 2 Key differences in insulinitis and residual ICIs in type 1 diabetes endotypes T1DE1 and T1DE2. (**a–d**) T1DE1 donors (mostly with a disease onset <13 years old) have few residual ICIs (**a**; green and red circles) compared with non-ICIs (blue and pink circles). The majority of residual ICIs display significant immune infiltration (**a**; >15 CD45⁺ cells, green circles); a representative image is shown in (**b**). This infiltrate is enriched in CD20⁺ B cells and CD8⁺ T cells (**c**, **d**). (**e–h**) T1DE2 donors (mostly with a disease onset ≥13 years old) retain significant residual ICIs (**e**; red and green circles), the majority of which do not meet the criteria for

insulinitis (**e**; red circles). Most ICIs have limited infiltration with CD45⁺ cells (**f**), the majority of which are CD8⁺ T cells with few CD20⁺ B cells (**g**, **h**). Specimens from representative donors from the EADB biobank (<https://foulis.vub.ac.be>) were immunostained with antibodies against insulin/glucagon/CD45 or glucagon/CD20/CD8 using triple chromogen-based immunohistochemistry similar to that described in [78]. Scale bars, 5 mm (**a**), 100 μm (**b–d**, **f–h**) or 10 mm (**e**). This figure is available as part of a [downloadable slideset](#)

[23]. In these donors, 11% of the islets displayed insulinitis, a proportion comparable with that observed in similar age/duration-matched CD20^{low} donors in both EADB and nPOD specimens. The fact that these samples came from living donors rules out perimortem or post-mortem changes as possible confounders. Collectively, the DiViD, EADB and nPOD findings with older-onset but short-duration disease rule out the possibility that the limited insulinitis observed represents an extinguished phase of islet autoimmunity, as could be the case in donors with longer disease duration.

Even in individuals with recent-onset disease, the autoimmune process dates back several months or years and the situation could be different at the preclinical disease stages: stage 1, presence of ≥2 autoantibodies; stage 2, presence of

autoantibodies and initial metabolic alterations (e.g. loss of first-phase insulin secretion); and stage 3, presence of autoantibodies and overt hyperglycaemia (i.e. clinical disease) [24]. One single autoantibody marks a low risk of progression, especially in adults, and is therefore not included in this staging system. Yet, most autoantibody-positive pancreas donors analysed to date are adults who are positive for a single autoantibody. It should be noted, however, that the low-risk definition of the single autoantibody status is based on longitudinal assessments in living humans and that the probability of appearance of a second autoantibody is approximately 7–20% at 5 years (depending on age), with a subsequent risk of clinical progression similar to those individuals who are positive for multiple autoantibodies from the start [25]. Thus, out of the reasonably

large series of ~100 donors positive for a single autoantibody analysed to date, a fraction would have eventually progressed. Yet, insulinitis was invariably absent in all autoantibody-positive donors, even in those with predisposing HLA haplotypes [19]. Additionally, in the relatively limited number of specimens from donors positive for multiple autoantibodies (i.e. stage 1 disease; ~20 analysed to date), little or no insulinitis was observed (1–9% of islets) [10, 22, 26]. This picture may reflect a disease kinetics remaining stable for many years before sudden progression. Arguably, snap-shooting this ‘point of no-return’ may be difficult in histopathological studies.

HLA-I hyperexpression is also typically found in ICIs; expression decreases with disease duration and is often associated with CD8⁺ insulinitis [27]. However, it is more readily apparent than insulinitis and is present in most ICIs, probably reflecting a readout of beta cell stress. A possible interpretation of this discrepancy is that insulinitis hallmarks may be more labile due to immune cells migrating between islets and the peri-islet and exocrine tissue, resulting in a variable pattern at any given time point compared with the more stable HLA-I hyperexpression. Nonetheless, even HLA-I hyperexpression was only found in 13% of islets from individuals positive for two autoantibodies, associated with higher yet mild CD8⁺ T cell infiltration [28].

Another point of controversy is that, despite the identification of several antigen specificities among pancreas-infiltrating T cells, a large fraction remains unassigned. Moreover, whether these T cells present an effector/memory phenotype compatible with an active autoimmune engagement is unknown. One study suggested a prevalent (46%) tissue-resident memory phenotype of peri-islet CD8⁺ T cells [29] that is enriched in non-diabetic donors [30] and, possibly, individuals who are T1DE2 [16, 29]. Although described as non-cytotoxic in insulinitis lesions [29], tissue-resident T cells can proliferate locally, produce proinflammatory cytokines and recruit circulating cells, thus possibly contributing to perpetuate disease. Mouse studies [31, 32] suggest that a significant fraction of pancreas-infiltrating T cells are naive (also in humans [15]) and non-islet-reactive, possibly configuring insulinitis as an ‘open’ lesion in which bystander T cell activation may contribute to beta cell damage.

Summing up: Most histopathological arguments suffer from sampling bias but are rather against a primary pathogenic role for T cells in T1DE2, while evidence is more substantial in T1DE1.

Functional evidence

For Although the NOD mouse model is imperfect, both CD4⁺ and CD8⁺ T cells are needed to transfer disease [33]. Moreover, NOD mice lacking MHC Class I (MHC-I) do not develop diabetes unless receiving splenocytes from diabetic animals

[34]. Interestingly, beta cell-selective MHC-I knockout in mice [35] protects against diabetes but not insulinitis, suggesting that MHC-I-interacting CD8⁺ T cells exert a late pathogenic role, consistent with their final involvement in beta cell cytotoxicity. The antigen specificity of these T cells has been explored with T cell receptor (TCR)-transgenic NOD mouse studies, which suggest a variable pathogenic potency of different T cell clonotypes. Indeed, diabetes development is accelerated by some TCRs, such as the CD4⁺ TCRs BDC-6.9 [36] (recognising a proinsulin/islet amyloid polypeptide hybrid peptide [37]) and 4.1 of unknown specificity [38] and the CD8⁺ islet-specific glucose-6-phosphatase catalytic-subunit related protein (IGRP)_{206–214}-reactive 8.3 TCR [38]). Others do not accelerate diabetes development (i.e. the CD4⁺ TCR BDC-2.5 reactive to a proinsulin/chromogranin-A hybrid peptide [37]), unless on a NOD/*scid* immunodeficient background [39], and the CD8⁺ Ins_{B15–23}-reactive G9C8 TCR, which requires prior Ins_{B15–23} immunisation [40]).

Reports analysing Tregs concluded that, while the frequency of circulating forkhead box P3 (FOXP3)⁺CD4⁺ Tregs is unaltered in type 1 diabetes, their regulatory activity is diminished [41]. This alteration reflects both a reduced suppressive function of Tregs [42], sometimes associated with increased secretion of proinflammatory cytokines (IFN- γ , IL-17) [41, 43], and an increased resistance of conventional T cells to suppression [44]. Treg dysfunction is partly genetically imprinted (e.g. through *IL2RA* polymorphisms leading to unstable FOXP3 expression under limiting IL-2 concentrations [41]). It is also highly heterogeneous across individuals and largely overlapping with non-diabetic control individuals, possibly pointing to Treg-driven disease endotypes. Similarly, IL-10-polarised islet-reactive CD4⁺ T cells were enriched in healthy donors and individuals with type 1 diabetes of later onset [45], who may be representative of T1DE2 [13].

Against Animal models of autoimmune diseases were initially produced by immunisation with organ extracts or antigens (e.g. for multiple sclerosis (1933) [46], orchitis, thyroiditis [47], adrenalitis, rheumatoid arthritis [48]). Despite a better knowledge of target antigens, similar immunisations of non-transgenic animals never provided an equivalent model of experimental insulinitis/diabetes, possibly reflecting the requirement for beta cell dysfunction. The BioBreeding rat provides another spontaneous animal model of human type 1 diabetes. Interestingly, it harbours a profound systemic T cell lymphopenia, including near absence of CD8⁺ T cells, which, despite some CD8⁺ T cell infiltration in islets [49], is required for spontaneous diabetes development [50].

CD8⁺ T cell clones recognising preproinsulin [51], IGRP [52] and zinc transporter 8 [53] epitopes can lyse beta cells in vitro. However, we documented that T cell clones from healthy donors display similar cytotoxic potency [53]. Although this similarity could reflect the long-term in vitro

stimulation of these clones, erasing *ex vivo* differences, it demonstrates that islet-reactive CD8⁺ T cells from any individual can be differentiated into cytotoxic effectors. Albeit this does not negate a pathogenic role for T cells, it does not provide supportive evidence either, as frequently claimed. Moreover, most *in vitro* cytotoxic experiments [51, 52] employed high effector/target ratios (10/1 to 25/1) compared with those observed *in situ* in the pancreas [8].

These results mirror recent observations by us [53–55] and others [56–58] that islet-reactive CD8⁺ T cells circulate at similar frequencies in healthy individuals and individuals with type 1 diabetes. It is unclear whether the same applies to CD4⁺ T cells. These reports detected CD8⁺ T cells using HLA-I multimers (i.e. independent of their functional phenotype), while a functional ELISpot readout of IFN- γ secretion repeatedly documented disease specificity [51, 53, 59, 60]. Thus, islet-reactive CD8⁺ T cells may differ according to disease status in terms of functional profile (e.g. exhaustion) rather than frequency [57, 61] and in their capacity to home to the pancreas, where their density is enriched in donors with type 1 diabetes [53, 54]. This difference in homing may point to the heightened vulnerability of stressed/senescent beta cells as an important driver [1, 62, 63]. Overall, these results open key questions to better understand T cell autoimmunity and biomarkers but do not offer arguments either for or against a primary pathogenic role for T cells.

Human T cell adoptive transfer into immunodeficient mice was not diabetogenic (e.g. using an IGRP-reactive CD8⁺ T cell clone [52]). Although TCR-transgenic CD4⁺ T cells recognising the HLA-DQ8-restricted INS_{B9-23} epitope transferred into HLA-DQ8-transgenic mice reconstituted with human thymus and CD34⁺ cells induced diabetes [64], they required strong priming conditions (i.e. multiple low-dose streptozotocin and INS_{B9-23} peptide immunisation). Streptozotocin-induced beta cell death and antigen release may provide the beta cell dysfunction signal needed for efficient T cell priming.

Summing up: Studies documenting Treg dysfunction and variable degrees of exhaustion of conventional T cells offer arguments for a role of human T cells. Arguments from *ex vivo* and *in vitro* human studies and *in vivo* ‘humanised’ mice are instead rather neutral or against such a role on its own and suggest an additional requirement for beta cell dysfunction.

Clinical evidence

For Islet autoantibodies appear before disease onset [5] and are produced by B cells, thus implying a helper role provided by CD4⁺ T cells. Eight case reports documented disease relapse in non- or minimally immunosuppressed recipients with type 1

diabetes 6–12 weeks after pancreas transplantation from non-diabetic HLA-identical siblings, with no relapse observed under immunosuppression [65]. Conversely, a case report described disease development 4 years after non-T cell-depleted HLA-identical bone marrow transplantation from a donor with type 1 diabetes [66].

Among the panoply of immunotherapeutic agents trialed in individuals with new-onset type 1 diabetes, four have shown some effect on C-peptide preservation: LFA-3-Ig (alefacept) [67], CTLA-4-Ig (abatacept) [68], anti-CD20 (rituximab) [69] and anti-CD3 monoclonal antibodies [70–73]. Apart from the anti-B cell agent rituximab, all target mainly T cells, arguing for T cell-driven mechanisms targetable by drugs. Interestingly, superior clinical benefit is often observed in children [67, 69, 70, 72], who may represent the more T cell/B cell-driven endotype TIDE1. Concordantly, individuals diagnosed at younger ages generally lose C-peptide secretion more rapidly and the fast-progressing subgroup displays age-dependent blood gene expression and cell count profiles that are higher for B cells and lower for neutrophils [7]. Moreover, individuals with higher pre-treatment B cell counts achieve superior C-peptide preservation after rituximab treatment [7], exemplifying the relevance of disease endotypes to selection of more-targeted immunotherapies.

Against The limited and partial improvements observed in immunotherapy trials starkly contrast with the more significant benefits achieved in other autoimmune diseases. Examples of mainstay disease-modifying therapies include the following: IFN- β , glatiramer, dimethyl fumarate, sphingosine-1-phosphate receptor modulators and antibodies to very late antigen-4 and CD20 for multiple sclerosis [74]; and methotrexate, TNF and IL-6 inhibitors, rituximab and abatacept for rheumatoid arthritis [75]. However, all these agents perform much better when given early in the disease course, at a stage that might correspond to the preclinical phase of type 1 diabetes.

A recurrent observation from immunotherapy trials in individuals with new-onset diabetes is that the effect on C-peptide preservation is limited to the first months of treatment and resumes its decline thereafter [76]. While this may indicate a need for prolonged treatment, it could also reflect targeting of only the T cell pathogenic component, leaving others, possibly related to beta cells [1], free to drive further disease progression. However, trials with putative beta cell-protective agents (e.g. glucagon-like peptide-1 agonists) have so far failed to deliver significant clinical benefits, or to convincingly ascribe any such benefit to beta cell protection [77].

Summing up: Clinical evidence is mostly in favour of a pathogenic role for T cells and limited immunotherapeutic efficacy may be improved by endotype-based stratification and earlier treatment.

Technical limitations in the study of islet-reactive T cells that hamper definition of their pathogenic role and fulfilment of Koch's postulates

Incomplete knowledge of islet antigens

- Need for a comprehensive identification
- Need for a stringent degree of evidence (i.e. natural processing and presentation by beta cells/antigen-presenting cells and recognition by T cells)

Gaps to be addressed: Which islet-reactive T cells are pathogenic? Do they infiltrate the pancreas? Do target antigens differ according to age of onset?

Technologies to identify and isolate islet-reactive T cells

- Functional readouts (cytokine production, proliferation, upregulation of activation markers): more sensitive (lower T cell avidity threshold needed) but less specific (bystander activation of other T cells); alter the ex-vivo T cell phenotype; miss functionally silent T cells (e.g. anergic, exhausted); may miss Tregs
- 'Structural' readouts (binding of HLA-I/II multimers): less sensitive (higher T cell avidity threshold needed) but more specific; maintain the ex vivo T cell phenotype; detect T cells independently of their function, including Tregs
- Functional/structural readouts: may reduce the drawbacks of each

Gaps to be addressed: How does the frequency and/or function of circulating islet-reactive T cells differ between individuals with type 1 diabetes and healthy individuals? How do they differ according to age of onset?

Addressing Koch's postulate no. 1: Islet-reactive T cells must be present in all diseased individuals, but not in healthy ones. Currently: CD8⁺ T cells are present in the blood of any individual but are enriched in the pancreas of individuals with type 1 diabetes; unclear for CD4⁺ T cells

Addressing Koch's postulate no. 2: Islet-reactive T cells can be isolated from diseased individuals. Currently: Also from healthy individuals (both CD4⁺ and CD8⁺ T cells)

Different pathogenic/regulatory/homing potential?

Most studies are performed on peripheral blood

- Need to expand studies on pancreatic lymph nodes and islets
- Need to expand the scope of these studies: definition of antigen specificity (TCR sequencing/re-expression, in situ HLA-I/II multimer staining); more in-depth phenotyping (single-cell transcriptomics, laser-capture microdissection)
- Need assays to follow disease dynamics vs the static snapshot of histopathology: pancreas tissue slices, islet microfluidic and biosensor platforms

Gaps to be addressed: How do circulating and tissue T cells differ? Are all pancreas-infiltrating T cells reactive to islet antigens? Are they antigen-experienced, tissue-resident, cytotoxic? Can they migrate between islets, can they serially kill multiple beta cells over time?

T cell and beta cell functional studies are often performed in isolation

- Need for in vitro and in vivo models of T cell/beta cell crosstalk

Gaps to be addressed: How do beta cells modulate their autoimmune vulnerability? How do T cells modulate beta cell dysfunction? Can we identify clinically relevant beta cell-protective agents?

Addressing Koch's postulate no. 3: Type 1 diabetes must be induced when islet-reactive T cells are inoculated into a healthy host. Currently: One clinical case report; poor induction in humanised mouse models

Are multiple islet-reactive T cell specificities needed for efficient beta cell destruction? Initial beta cell damage/dysfunction required?

Addressing Koch's postulate no. 4: Islet-reactive T cells must be recoverable from inoculated hosts. Currently: Not attempted in the clinical case report; postulate fulfilled in humanised mouse models despite poor diabetes induction

Gaps in knowledge preventing conclusive evidence of the pathogenic role of T cells

The fulfilment of Koch's postulates for a pathogenic role for T cells is currently incomplete, partly due to technical limitations hindering progress (see Text box: 'Technical limitations in the study of islet-reactive T cells that hamper definition of their pathogenic role and fulfilment of Koch's postulates'). Conceptually, our understanding remains limited at two levels. First, it is not clear how environmental factors trigger T cell engagement. Most candidates (e.g. enteroviral infections and nutrients disrupting the gut barrier and/or microbiota composition) could exert their effects on both T cells and beta cells. Thus, the relative weight and temporal sequence of these effects would clarify whether T cell engagement represents a primary causative event or a bystander consequence of beta cell dysfunction, and whether such engagement affects disease initiation and/or progression/amplification. We also need to better understand the intermediate steps (e.g. metabolic and inflammatory derangements) connecting environmental triggers with T cell recruitment, and the innate-adaptive immune crosstalk. Second, differences in the frequency and/or phenotype of circulating islet-reactive T cells between diabetic and healthy donors are rather subtle if not absent altogether. We need to better understand the features of this universal state of 'benign' autoimmunity, how it is lost and its relationship with age. To this end, a detailed description of T cell modifications along the natural history of disease is required but remains largely unexplored in peripheral blood and even more so in the pancreas. Very few organ donors analysed are positive for multiple autoantibodies (stage 1 disease), and none are representative of stage 2 with initial dysglycaemia. We can speculate on whether insulinitis may represent a transient phase in disease progression. Its near absence in stage 1 donors may thus reflect a relatively late autoimmune acceleration during stage 2 that we are presently missing.

Conclusion

Figure 1 summarises the available evidence for or against a primary pathogenic role for T cells in type 1 diabetes. While most of the evidence favours such a role, some does not provide the support often given as granted. Histopathological evidence yields a more conflicting picture. Although biased by some limitations inherent to these studies, they suggest the existence of two age-related endotypes. Clinical evidence of faster beta cell loss and superior benefit of immunotherapeutic intervention in individuals with younger-onset diabetes further support this endotype view. Several technical limitations and gaps in knowledge need to be filled to gauge T cell involvement according to age and disease endotypes. Type 1 diabetes may be a case of one name but two diseases (i.e. younger-onset with primary T cell-driven mechanisms and older-onset with

primary beta cell-driven mechanisms) leading to similar clinical presentations but requiring different treatments.

Acknowledgements The authors would like to thank R. Wyatt (University of Exeter), I. Kusmartseva and M. Padilla (University of Florida) for the preparation and imaging of the pancreas sections.

Funding RM is funded by grants from The Leona M. and Harry B. Helmsley Charitable Trust (Helmsley no. 1901-03689), JDRF (2-SRA-2016-164-Q-R), the Fondation Francophone pour la Recherche sur le Diabète, the Fondation pour la Recherche Médicale (EQU20193007831) and the Agence Nationale de la Recherche (ANR-19-CE15-0014-01). SJR is funded by grants from Diabetes UK (16/0005480), JDRF (5-CDA-2014-221-A-N; 2-SRA-2018-474-S-B) and the MRC (MR/P010695/1). RM and SJR are funded and by the Innovative Medicines Initiative 2 Joint Undertaking under grant agreements 115797 and 945268 (INNODIA and INNODIA HARVEST). These Joint Undertakings receive support from the Union's Horizon 2020 research and innovation programme, European Federation of Pharmaceutical Industries Associations, JDRF and The Leona M. and Harry B. Helmsley Charitable Trust. Research in the laboratories of RM and SJR is performed with the support of the Network for Pancreatic Organ donors with Diabetes (nPOD; RRID:SCR_014641), a collaborative type 1 diabetes research project sponsored by JDRF (nPOD: 5-SRA-2018-557-Q-R) and The Leona M. & Harry B. Helmsley Charitable Trust (Grant#2018PG-T1D053). The content and views expressed are the responsibility of the authors and do not necessarily reflect the official view of nPOD. Organ Procurement Organizations (OPO) partnering with nPOD to provide research resources are listed at <http://www.jdrfnpod.org/for-partners/npod-partners/>.

Authors' relationships and activities The authors declare that there are no relationships or activities that might bias, or be perceived to bias, their work.

Contribution statement AC, SJR, EL and RM wrote the paper. All authors approved the version to be published.

Open Access This article is licensed under a Creative Commons Attribution 4.0 International License, which permits use, sharing, adaptation, distribution and reproduction in any medium or format, as long as you give appropriate credit to the original author(s) and the source, provide a link to the Creative Commons licence, and indicate if changes were made. The images or other third party material in this article are included in the article's Creative Commons licence, unless indicated otherwise in a credit line to the material. If material is not included in the article's Creative Commons licence and your intended use is not permitted by statutory regulation or exceeds the permitted use, you will need to obtain permission directly from the copyright holder. To view a copy of this licence, visit <http://creativecommons.org/licenses/by/4.0/>.

References

- Mallone R, Eizirik DL (2020) Presumption of innocence in type 1 diabetes: why are beta cells such vulnerable autoimmune targets? *Diabetologia* 63:1999–2006. <https://doi.org/10.1007/s00125-020-05176-7>
- Battaglia M, Ahmed S, Anderson MS et al (2020) Introducing the endotype concept to address the challenge of disease heterogeneity

- in type 1 diabetes. *Diabetes Care* 43(1):5–12. <https://doi.org/10.2337/dc19-0880>
3. Noble JA, Valdes AM, Varney MD et al (2010) HLA Class I and genetic susceptibility to type 1 diabetes. *Diabetes* 59(11):2972–2979. <https://doi.org/10.2337/db10-0699>
 4. Robertson CC, Inshaw JRJ, Onengut-Gumuscu S, et al (2020) Fine-mapping, trans-ancestral and genomic analyses identify causal variants, cells, genes and drug targets for type 1 diabetes. *bioRxiv* 158071 (preprint). <https://doi.org/10.1101/2020.06.19.158071>
 5. Pociot F, Lemmark Å (2016) Genetic risk factors for type 1 diabetes. *Lancet* 387(10035):2331–2339. [https://doi.org/10.1016/S0140-6736\(16\)30582-7](https://doi.org/10.1016/S0140-6736(16)30582-7)
 6. Valdes AM, Erlich HA, Carlson J, Varney M, Moonsamy PV, Noble JA (2012) Use of class I and class II HLA loci for predicting age at onset of type 1 diabetes in multiple populations. *Diabetologia* 55(9):2394–2401. <https://doi.org/10.1007/s00125-012-2608-z>
 7. Dufort MJ, Greenbaum CJ, Speake C, Linsley PS (2019) Cell type-specific immune phenotypes predict loss of insulin secretion in new-onset type 1 diabetes. *JCI Insight* 4(4):e125556. <https://doi.org/10.1172/jci.insight.125556>
 8. Coppieters KT, Dotta F, Amirian N et al (2012) Demonstration of islet-autoreactive CD8 T cells in insulinitic lesions from recent onset and long-term type 1 diabetes patients. *J Exp Med* 209(1):51–60. <https://doi.org/10.1084/jem.20111187>
 9. Richardson SJ, Rodriguez-Calvo T, Gerling IC et al (2016) Islet cell hyperexpression of HLA class I antigens: a defining feature in type 1 diabetes. *Diabetologia* 59(11):2448–2458. <https://doi.org/10.1007/s00125-016-4067-4>
 10. In't Veld P, Lievens D, De Grijse J et al (2007) Screening for insulinitis in adult autoantibody-positive organ donors. *Diabetes* 56(9):2400–2404. <https://doi.org/10.2337/db07-0416>
 11. Willcox A, Richardson SJ, Bone AJ, Foulis AK, Morgan NG (2009) Analysis of islet inflammation in human type 1 diabetes. *Clin Exp Immunol* 155(2):173–181. <https://doi.org/10.1111/j.1365-2249.2008.03860.x>
 12. Rodriguez-Calvo T, Ekwall O, Amirian N, Zapardiel-Gonzalo J, von Herrath MG (2014) Increased immune cell infiltration of the exocrine pancreas: a possible contribution to the pathogenesis of type 1 diabetes. *Diabetes* 63(11):3880–3890. <https://doi.org/10.2337/db14-0549>
 13. Arif S, Leete P, Nguyen V et al (2014) Blood and islet phenotypes indicate immunological heterogeneity in type 1 diabetes. *Diabetes* 63(11):3835–3845. <https://doi.org/10.2337/db14-0365>
 14. Vecchio F, Buono NL, Stabellini A et al (2018) Abnormal neutrophil signature in the blood and pancreas of presymptomatic and symptomatic type 1 diabetes. *JCI Insight* 3(18):e122146. <https://doi.org/10.1172/jci.insight.122146>
 15. Damond N, Engler S, Zanotelli VRT et al (2019) A map of human type 1 diabetes progression by imaging mass cytometry. *Cell Metab* 29(3):755–768.e5. <https://doi.org/10.1016/j.cmet.2018.11.014>
 16. Leete P, Willcox A, Krogvold L et al (2016) Differential insulinitic profiles determine the extent of β -cell destruction and the age at onset of type 1 diabetes. *Diabetes* 65(5):1362–1369. <https://doi.org/10.2337/db15-1615>
 17. Leete P, Oram RA, McDonald TJ et al (2020) Studies of insulin and proinsulin in pancreas and serum support the existence of aetiopathological endotypes of type 1 diabetes associated with age at diagnosis. *Diabetologia* 63(6):1258–1267. <https://doi.org/10.1007/s00125-020-05115-6>
 18. In't Veld P (2011) Insulinitis in human type 1 diabetes. *Islets* 3(4):131–138. <https://doi.org/10.4161/isl.3.4.15728>
 19. Rodriguez-Calvo T, Richardson SJ, Pugliese A (2018) Pancreas pathology during the natural history of type 1 diabetes. *Curr Diab Rep* 18(11):124. <https://doi.org/10.1007/s11892-018-1084-3>
 20. Campbell-Thompson ML, Atkinson MA, Butler AE et al (2013) The diagnosis of insulinitis in human type 1 diabetes. *Diabetologia* 56(11):2541–2543. <https://doi.org/10.1007/s00125-013-3043-5>
 21. Donath MY, Hess C, Palmer E (2014) What is the role of autoimmunity in type 1 diabetes? A clinical perspective. *Diabetologia* 57(4):653–655. <https://doi.org/10.1007/s00125-013-3153-0>
 22. Campbell-Thompson M, Fu A, Kaddis JS et al (2016) Insulinitis and β -cell mass in the natural history of type 1 diabetes. *Diabetes* 65(3):719–731. <https://doi.org/10.2337/db15-0779>
 23. Krogvold L, Wiberg A, Edwin B et al (2016) Insulinitis and characterisation of infiltrating T cells in surgical pancreatic tail resections from patients at onset of type 1 diabetes. *Diabetologia* 59(3):492–501. <https://doi.org/10.1007/s00125-015-3820-4>
 24. Insel RA, Dunne JL, Atkinson MA et al (2015) Staging presymptomatic type 1 diabetes: a scientific statement of JDRF, the Endocrine Society, and the American Diabetes Association. *Diabetes Care* 38(10):1964–1974. <https://doi.org/10.2337/dc15-1419>
 25. Bingley PJ, Boulware DC, Krischer JP, Type 1 Diabetes TrialNet Study Group (2016) The implications of autoantibodies to a single islet antigen in relatives with normal glucose tolerance: development of other autoantibodies and progression to type 1 diabetes. *Diabetologia* 59(3):542–549. <https://doi.org/10.1007/s00125-015-3830-2>
 26. Wiberg A, Granstam A, Ingvast S et al (2015) Characterization of human organ donors testing positive for type 1 diabetes-associated autoantibodies. *Clin Exp Immunol* 182(3):278–288. <https://doi.org/10.1111/cei.12698>
 27. Richardson SJ, Morgan NG, Foulis AK (2014) Pancreatic pathology in type 1 diabetes mellitus. *Endocr Pathol* 25(1):80–92. <https://doi.org/10.1007/s12022-014-9297-8>
 28. Rodriguez-Calvo T, Suwandi JS, Amirian N et al (2015) Heterogeneity and lobularity of pancreatic pathology in type 1 diabetes during the prediabetic phase. *J Histochem Cytochem* 63(8):626–636. <https://doi.org/10.1369/0022155415576543>
 29. Kuric E, Seiron P, Krogvold L et al (2017) Demonstration of tissue resident memory CD8 T cells in insulinitic lesions in adult patients with recent-onset type 1 diabetes. *Am J Pathol* 187(3):581–588. <https://doi.org/10.1016/j.ajpath.2016.11.002>
 30. Radenkovic M, Uvebrant K, Skog O et al (2017) Characterization of resident lymphocytes in human pancreatic islets. *Clin Exp Immunol* 187(3):418–427. <https://doi.org/10.1111/cei.12892>
 31. Magnuson AM, Thurber GM, Kohler RH, Weissleder R, Mathis D, Benoist C (2015) Population dynamics of islet-infiltrating cells in autoimmune diabetes. *Proc Natl Acad Sci U S A* 112(5):1511–1516. <https://doi.org/10.1073/pnas.1423769112>
 32. Christofferson G, Chodaczek G, Ratliff SS, Coppieters K, von Herrath MG (2018) Suppression of diabetes by accumulation of non-islet-specific CD8⁺ effector T cells in pancreatic islets. *Sci Immunol* 3(21):eaam6533. <https://doi.org/10.1126/sciimmunol.aam6533>
 33. Bendelac A, Carnaud C, Boitard C, Bach JF (1987) Syngeneic transfer of autoimmune diabetes from diabetic NOD mice to healthy neonates. Requirement for both L3T4+ and Lyt-2+ T cells. *J Exp Med* 166(4):823–832. <https://doi.org/10.1084/jem.166.4.823>
 34. Wicker LS, Leiter EH, Todd JA et al (1994) β 2-Microglobulin-deficient NOD mice do not develop insulinitis or diabetes. *Diabetes* 43(3):500–504. <https://doi.org/10.2337/diab.43.3.500>
 35. Hamilton-Williams EE, Palmer SE, Charlton B, Slattery RM (2003) Beta cell MHC class I is a late requirement for diabetes. *Proc Natl Acad Sci U S A* 100(11):6688–6693. <https://doi.org/10.1073/pnas.1131954100>
 36. Pauza ME, Dobbs CM, He J et al (2004) T-cell receptor transgenic response to an endogenous polymorphic autoantigen determines susceptibility to diabetes. *Diabetes* 53(4):978–988. <https://doi.org/10.2337/diabetes.53.4.978>

37. Delong T, Wiles TA, Baker RL et al (2016) Pathogenic CD4 T cells in type 1 diabetes recognize epitopes formed by peptide fusion. *Science* 351(6274):711–714. <https://doi.org/10.1126/science.aad2791>
38. Verdaguer J, Schmidt D, Amrani A, Anderson B, Averill N, Santamaria P (1997) Spontaneous autoimmune diabetes in monoclonal T cell nonobese diabetic mice. *J Exp Med* 186(10):1663–1676. <https://doi.org/10.1084/jem.186.10.1663>
39. Kurrer MO, Pakala SV, Hanson HL, Katz JD (1997) Beta cell apoptosis in T cell-mediated autoimmune diabetes. *Proc Natl Acad Sci U S A* 94(1):213–218. <https://doi.org/10.1073/pnas.94.1.213>
40. Wong FS, Khai Siew L, Scott G et al (2009) Activation of insulin-reactive CD8 T-cells for development of autoimmune diabetes. *Diabetes* 58(5):1156–1164. <https://doi.org/10.2337/db08-0800>
41. Hull CM, Peakman M, Tree TIM (2017) Regulatory T cell dysfunction in type 1 diabetes: what's broken and how can we fix it? *Diabetologia* 60(10):1839–1850. <https://doi.org/10.1007/s00125-017-4377-1>
42. Lindley S, Dayan CM, Bishop A, Roep BO, Peakman M, Tree TIM (2005) Defective suppressor function in CD4⁺CD25⁺ T-cells from patients with type 1 diabetes. *Diabetes* 54(1):92–99. <https://doi.org/10.2337/diabetes.54.1.92>
43. McClymont SA, Putnam AL, Lee MR et al (2011) Plasticity of human regulatory T cells in healthy subjects and patients with type 1 diabetes. *J Immunol* 186(7):3918–3926. <https://doi.org/10.4049/jimmunol.1003099>
44. Schneider A, Rieck M, Sanda S, Pihoker C, Greenbaum C, Buckner JH (2008) The effector T cells of diabetic subjects are resistant to regulation via CD4⁺FOXP3⁺ regulatory T cells. *J Immunol* 181(10):7350–7355. <https://doi.org/10.4049/jimmunol.181.10.7350>
45. Arif S, Tree TI, Astill TP et al (2004) Autoreactive T cell responses show proinflammatory polarization in diabetes but a regulatory phenotype in health. *J Clin Invest* 113(3):451–463. <https://doi.org/10.1172/JCI19585>
46. Rivers TM, Sprunt DH, Berry GP (1933) Observations on attempts to produce acute disseminated encephalomyelitis in monkeys. *J Exp Med* 58(1):39–53. <https://doi.org/10.1084/jem.58.1.39>
47. Rose NR, Witebsky E (1956) Studies on organ specificity. V. Changes in the thyroid glands of rabbits following active immunization with rabbit thyroid extracts. *J Immunol* 76(6):417–427
48. Trentham DE, Townes AS, Kang AH (1977) Autoimmunity to type II collagen an experimental model of arthritis. *J Exp Med* 146(3):857–868. <https://doi.org/10.1084/jem.146.3.857>
49. Hosszufalusi N, Chan E, Teruya M, Takei S, Granger G, Charles MA (1993) Quantitative phenotypic and functional analyses of islet immune cells before and after diabetes onset in the BB rat. *Diabetologia* 36(11):1146–1154. <https://doi.org/10.1007/BF00401059>
50. Mordes JP, Bortell R, Blankenhorn EP, Rossini AA, Greiner DL (2004) Rat models of type 1 diabetes: Genetics, environment, and autoimmunity. *ILAR J* 45(3):278–291. <https://doi.org/10.1093/ilar.45.3.278>
51. Skowera A, Ellis RJ, Varela-Calviño R et al (2008) CTLs are targeted to kill β cells in patients with type 1 diabetes through recognition of a glucose-regulated preproinsulin epitope. *J Clin Invest* 118(10):3390–3402. <https://doi.org/10.1172/JCI35449>
52. Unger WWJ, Pearson T, Abreu JRF et al (2012) Islet-specific CTL cloned from a type 1 diabetes patient cause beta-cell destruction after engraftment into HLA-A2 transgenic NOD/SCID/IL2RG null mice. *PLoS One* 7(11):e49213. <https://doi.org/10.1371/journal.pone.0049213>
53. Culina S, Lalanne AI, Afonso G et al (2018) Islet-reactive CD8⁺ T cell frequencies in the pancreas, but not in blood, distinguish type 1 diabetic patients from healthy donors. *Sci Immunol* 3(20):eaao4013. <https://doi.org/10.1126/sciimmunol.aao4013>
54. Gonzalez-Duque S, Azoury ME, Colli ML et al (2018) Conventional and neo-antigenic peptides presented by β cells are targeted by circulating naïve CD8⁺ T cells in type 1 diabetic and healthy donors. *Cell Metab* 28(6):946–960. <https://doi.org/10.1016/j.cmet.2018.07.007>
55. Azoury ME, Tarayrah M, Afonso G, et al (2020) Peptides Derived From Insulin Granule Proteins are Targeted by CD8⁺ T Cells Across MHC Class I Restrictions in Humans and NOD Mice. *Diabetes* 69(9). <https://doi.org/10.2337/db20-0013>
56. Skowera A, Ladell K, McLaren JE et al (2015) β -Cell-specific CD8 T cell phenotype in type 1 diabetes reflects chronic autoantigen exposure. *Diabetes* 64(3):916–925. <https://doi.org/10.2337/db14-0332>
57. Wiedeman AE, Muir VS, Rosasco MG et al (2019) Autoreactive CD8⁺ T cell exhaustion distinguishes subjects with slow type 1 diabetes progression. *J Clin Invest* 130(1):480–490. <https://doi.org/10.1172/JCI126595>
58. Yeo L, Pujol-Autonell I, Baptista R et al (2020) Circulating β cell-specific CD8⁺ T cells restricted by high-risk HLA class I molecules show antigen experience in children with and at risk of type 1 diabetes. *Clin Exp Immunol* 199(3):263–277. <https://doi.org/10.1111/cei.13391>
59. Mallone R, Martinuzzi E, Blancou P et al (2007) CD8⁺ T-cell responses identify β -cell autoimmunity in human type 1 diabetes. *Diabetes* 56(3):613–621. <https://doi.org/10.2337/db06-1419>
60. Scotto M, Afonso G, Larger E et al (2012) Zinc transporter (ZnT)₈¹⁸⁶⁻¹⁹⁴ is an immunodominant CD8⁺ T cell epitope in HLA-A2⁺ type 1 diabetic patients. *Diabetologia* 55(7):2026–2031. <https://doi.org/10.1007/s00125-012-2543-z>
61. McKinney EF, Lee JC, Jayne DRW, Lyons PA, Smith KGC (2015) T-cell exhaustion, co-stimulation and clinical outcome in autoimmunity and infection. *Nature* 523(7562):612–616. <https://doi.org/10.1038/nature14468>
62. Thompson PJ, Shah A, Ntranos V, Van Gool F, Atkinson M, Bhushan A (2019) Targeted elimination of senescent beta cells prevents type 1 diabetes. *Cell Metab* 29(5):1045–1060.e10. <https://doi.org/10.1016/j.cmet.2019.01.021>
63. Lee H, Lee Y-S, Harenda Q, et al (2020) Beta cell dedifferentiation induced by IRE1 α deletion prevents type 1 diabetes. *Cell Metab* 31(4):822–836.e5. <https://doi.org/10.1016/j.cmet.2020.03.002>
64. Tan S, Li Y, Xia J et al (2017) Type 1 diabetes induction in humanized mice. *Proc Natl Acad Sci U S A* 114(41):10954–10959. <https://doi.org/10.1073/pnas.1710415114>
65. Sutherland DE, Goetz FC, Sibley RK (1989) Recurrence of disease in pancreas transplants. *Diabetes* 38(S1):85–87. <https://doi.org/10.2337/diab.38.1.s85>
66. Lampeter EF, Homberg M, Quabeck K et al (1993) Transfer of insulin-dependent diabetes between HLA-identical siblings by bone marrow transplantation. *Lancet* 341(8855):1243–1244. [https://doi.org/10.1016/0140-6736\(93\)91148-f](https://doi.org/10.1016/0140-6736(93)91148-f)
67. Rigby MR, Harris KM, Pinckney A et al (2016) Alefacept provides sustained clinical and immunological effects in new-onset type 1 diabetes patients. *J Clin Invest* 125(8):3285–3296. <https://doi.org/10.1172/JCI81722>
68. Orban T, Bundy B, Becker DJ et al (2014) Costimulation modulation with abatacept in patients with recent-onset type 1 diabetes: follow-up 1 year after cessation of treatment. *Diabetes Care* 37(4):1069–1075. <https://doi.org/10.2337/dcl13-0604>
69. Pescovitz MD, Greenbaum CJ, Krause-Steinrauf H et al (2009) Rituximab, B-lymphocyte depletion, and preservation of beta-cell function. *N Engl J Med* 361(22):2143–2152. <https://doi.org/10.1056/NEJMoa0904452>
70. Keymeulen B, Walter M, Mathieu C et al (2010) Four-year metabolic outcome of a randomised controlled CD3-antibody trial in

- recent-onset type 1 diabetic patients depends on their age and baseline residual beta cell mass. *Diabetologia* 53(4):614–623. <https://doi.org/10.1007/s00125-009-1644-9>
71. Aronson R, Gottlieb PA, Christiansen JS et al (2014) Low-dose oteelixumab anti-CD3 monoclonal antibody DEFEND-1 study: results of the randomized phase iii study in recent-onset human type 1 diabetes. *Diabetes Care* 37(10):2746–2754. <https://doi.org/10.2337/dc13-0327>
 72. Sherry N, Hagopian W, Ludvigsson J et al (2011) Teplizumab for treatment of type 1 diabetes (Protégé study): 1-year results from a randomised, placebo-controlled trial. *Lancet* 378(9790):487–497. [https://doi.org/10.1016/S0140-6736\(11\)60931-8](https://doi.org/10.1016/S0140-6736(11)60931-8)
 73. Herold KC, Bundy BN, Long SA et al (2019) An anti-CD3 antibody, teplizumab, in relatives at risk for type 1 diabetes. *N Engl J Med* 381(7):603–613. <https://doi.org/10.1056/NEJMoa1902226>
 74. Cree BAC, Mares J, Hartung H-P (2019) Current therapeutic landscape in multiple sclerosis: an evolving treatment paradigm. *Curr Opin Neurol* 32(3):365–377. <https://doi.org/10.1097/WCO.0000000000000700>
 75. Giacomelli R, Afeltra A, Alunno A et al (2017) International consensus: what else can we do to improve diagnosis and therapeutic strategies in patients affected by autoimmune rheumatic diseases (rheumatoid arthritis, spondyloarthritis, systemic sclerosis, systemic lupus erythematosus, antiphospholipid syndrome and Sjogren's syndrome)? The unmet needs and the clinical grey zone in autoimmune disease management. *Autoimmun Rev* 16(9):911–924. <https://doi.org/10.1016/j.autrev.2017.07.012>
 76. Greenbaum CJ, Beam CA, Boulware D et al (2012) Fall in C-peptide during first 2 years from diagnosis: evidence of at least two distinct phases from composite type 1 diabetes TrialNet data. *Diabetes* 61(8):2066–2073. <https://doi.org/10.2337/db11-1538>
 77. Kielgast U, Holst JJ, Madsbad S (2011) Antidiabetic actions of endogenous and exogenous GLP-1 in type 1 diabetic patients with and without residual β -cell function. *Diabetes* 60(5):1599–1607. <https://doi.org/10.2337/db10-1790>
 78. Kusmartseva I, Beery M, Hiller H et al (2020) Temporal analysis of amylase expression in control, autoantibody-positive, and type 1 diabetes pancreatic tissues. *Diabetes* 69(1):60–66. <https://doi.org/10.2337/db19-0554>

Publisher's note Springer Nature remains neutral with regard to jurisdictional claims in published maps and institutional affiliations.