

Abilene Christian University

Digital Commons @ ACU

Dixieland College Materials

Theophilus Brown Larimore Papers

1912

Set of 5 drawings from W. B. Camp, Architect

W. B. Camp, Architect

Follow this and additional works at: https://digitalcommons.acu.edu/dixieland_college_materials



Part of the [Biblical Studies Commons](#), [Christian Denominations and Sects Commons](#), [Christianity Commons](#), and the [Religious Education Commons](#)

Recommended Citation

Set of 5 drawings from W. B. Camp, Architect, Dixieland College Material (4), Theophilus Brown Larimore Papers, 1907-1935. Center for Restoration Studies MS #6. Abilene Christian University Special Collections and Archives, Brown Library. Abilene Christian University, Abilene, TX.

This Article is brought to you for free and open access by the Theophilus Brown Larimore Papers at Digital Commons @ ACU. It has been accepted for inclusion in Dixieland College Materials by an authorized administrator of Digital Commons @ ACU.



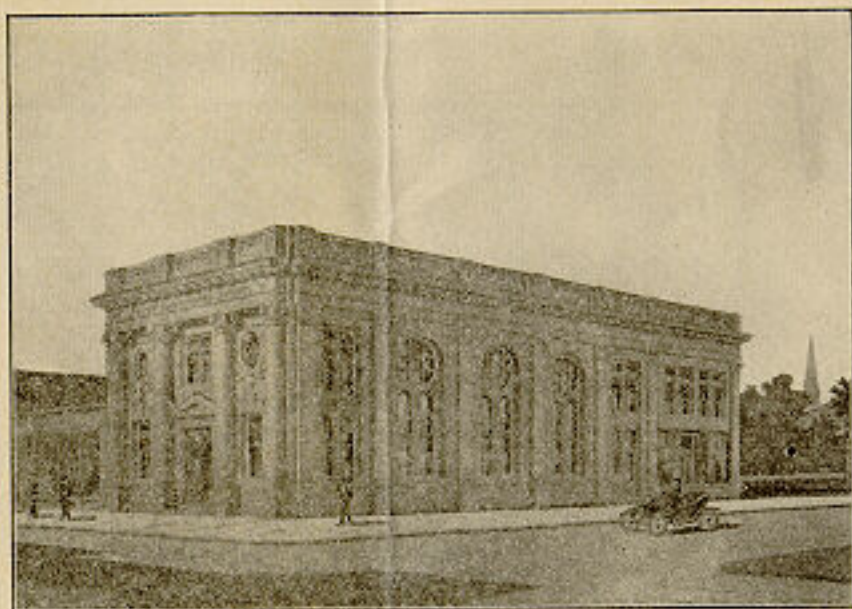
ACCEPTED DESIGN FOR

Ocala National Bank

OCALA, FLORIDA.

W. B. CAMP, ARCH'T.

Jacksonville, Florida.



ACCEPTED DESIGN FOR

The First National Bank at

MADISON FLORIDA.

W. B. CAMP, ARCH'T.

Jacksonville, Florida.



ACCEPTED DESIGN OF THE FLORIDA NATIONAL BANK

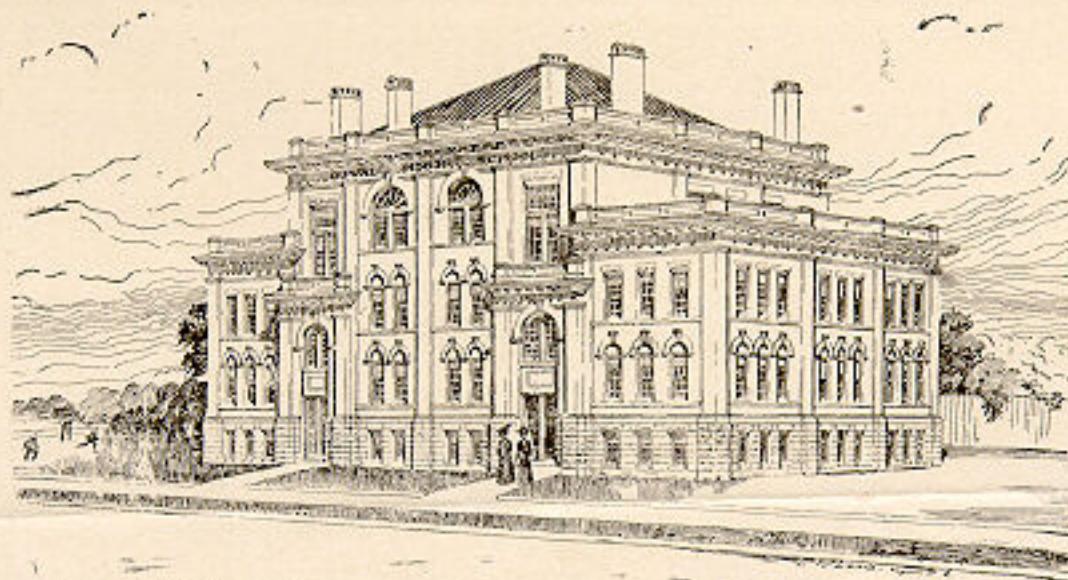
W. B. CAMP, Architect

JACKSONVILLE, FLORIDA



PROPOSED Y. M. C. A. BUILDING
JACKSONVILLE, FLORIDA.
W. B. CAMP, ARCHITECT
JACKSONVILLE, FLORIDA.

PROPOSED Y. M. C. A. BUILDING
For Jacksonville, Florida
W. B. CAMP, Architect



DUVAL HIGH SCHOOL -
JACKSONVILLE, FLORIDA.

W. B. CAMP, ARCHITECT
JACKSONVILLE, FLORIDA.

DUVAL HIGH SCHOOL
JACKSONVILLE, FLA.

W. B. CAMP, Architect.