



Block of impulse propagation at an abrupt tissue expansion: evaluation of the critical strand diameter in 2- and 3-dimensional computer models

Vladimir G. Fast^{*}, André G. Kléber

Department of Physiology, University of Berne, Bülhplatz 5, CH-3012, Berne, Switzerland

Received 26 January 1995; accepted 12 May 1995

Abstract

Objective: Unidirectional conduction block in the heart can occur at a site where the impulse is transmitted from a small to a large tissue volume. The aim of this study was to evaluate the occurrence of conduction block in a 2-dimensional and 3-dimensional computer model of cardiac tissue consisting of a narrow strand abruptly emerging into a large area. In this structure, the strand diameter critical for the occurrence of block, h_c , was evaluated as a function of changes in the active and passive electrical properties of both the strand and the large medium. **Methods:** The effects of changes in the following parameters on h_c were analysed: (1) maximum sodium conductance (gNa_{max}), (2) longitudinal (R_x) and transverse (R_y) intracellular resistivities, and (3) inhomogeneities in gNa_{max} and R_x and R_y between the strand and the large area. Three ionic models for cardiac excitation described by Beeler-Reuter, Ebihara-Johnson, and Luo-Rudy ionic current kinetics were compared. **Results:** In the 2-dimensional simulations, h_c was 175 μm in Ebihara-Johnson and Beeler-Reuter models and 200 μm in the Luo-Rudy model. At the critical strand diameter, the site of conduction block was located beyond the transition, i.e. a small circular area was activated in the large medium, whereas with narrower strands conduction block occurred within the strands. The decrease of gNa_{max} resulted in a large increase of h_c . This increase was mainly due to the change of gNa_{max} in the large area, while h_c was almost independent of gNa_{max} in the strand. Changing R_x had no effect on h_c , whereas the increase of R_y decreased h_c and reversed conduction block. Inhomogeneous changes of R_x and R_y in the strand versus the large medium had opposite effects on h_c . When the resistivities of the strand alone were increased, h_c also increased. In contrast, the increase of the resistivities in the large area reduced h_c . In the 3-dimensional model, h_c was 2.7 times larger than the corresponding 2-dimensional values at the various levels of gNa_{max} and resistivity. **Conclusions:** (1) At physiological values for active and passive electrical properties, h_c in the 2D simulations is close to 200 μm in all three ionic models. In the 3-dimensional simulations, h_c is 2.7 larger than in the 2-dimensional models. (2) The excitable properties of the large area but not of the strand modify h_c . The decrease of intercellular coupling in the large medium facilitates impulse conduction and reduces h_c , while the same change in the strand increases h_c . (3) Occurrence of conduction block at an abrupt geometrical transition can be explained by both the impedance mismatch at the transition site and the critical curvature beyond the transition.

Keywords: Computer model; Conduction; Anisotropy

1. Introduction

Impulse conduction in cardiac tissue is dependent on the flow of local current at the front of the propagating wave. At a site of an abrupt geometrical expansion from a narrow cardiac strand into a large volume of myocardium, the amount of current supplied by the strand may not suffice to discharge the increased membrane surface downstream and conduction may fail (current-to-load mismatch). In the case where conduction is successful in the opposite direction (decrease of the electrical load across the transition) unidirectional conduction block (UDCB) will occur.

In the heart, a change in electrical load occurs in variety of locations including junctions between Purkinje fibers and ventricular muscle [1], between SA node and atrial tissue [2], between accessory pathways and myocardium in the WPW syndrome [3], and between thin cell strands surviving within an infarcted myocardium and intact tissue [4]. The effect of a geometrical expansion on impulse conduction was studied theoretically in 1-dimensional cable models representing either an axon or a cardiac strand [5–10]. Experimentally, it was investigated in several tissue models including Purkinje-muscle junction [11–13], branching muscle bundles [14], an isthmus connecting two large areas of atrial or ventricular tissue [3,15,16] and

^{*} Corresponding author. Tel. (+41-31) 631 87 07; Fax (+41-31) 631 46 11.

Time for primary review 27 days.

patterned cell cultures with narrow strands abruptly diverging into a large cell area [17–19].

An important parameter in the geometry-dependent mechanism of UDCB is the critical diameter of a cardiac strand at which the block occurs. This parameter shares a close similarity with the critical size of excited tissue necessary to produce a propagated response (concept of liminal length [20–22]), with the critical width of an isthmus connecting two large excitable areas [16], and with the critical curvature of a propagating wave front [23,24]. The value of critical strand width has not been calculated in the computer simulations until now and its dependence on the passive and active model properties has not been established. Here we use a computer model of cardiac excitation to calculate the critical strand width and to evaluate its dependence on tissue properties. The specific goals were the following:

(1) To evaluate the critical strand size in 2-dimensional vs. 3-dimensional models. The electrical load imposed by the large tissue area on the narrow strand depends on the dimensionality of the large area. Thus, the critical strand width is expected to be different depending on whether the strand diverges into a thin 2-dimensional sheet of myocardium or into a 3-dimensional myocardial wall.

(2) To investigate the effects of inhomogeneities in tissue properties at the geometrical expansion on critical strand width. We modelled inhomogeneities in excitability and in resistivity between the strand and the large area. Such an inhomogeneity is present at the PM junction where both passive and excitable properties of the Purkinje fiber and of the ventricular muscle are different.

(3) To test whether the main findings about the critical strand width are model independent by using different models for the description of ionic currents in ventricular myocardium according to Beeler–Reuter [25], Ebihara–Johnson [26], and Luo–Rudy [27].

2. Methods

The 2-dimensional (2D) model was designed to describe impulse propagation in a thin sheet of myocardium and was similar to the model used previously [19]. The extracellular medium was assumed to be isotropic and its resistance to be negligible. The model did not include the cellular structure, i.e. intercellular and cytoplasmic resistances were lumped together. However, the overall intracellular resistivity could be varied throughout the medium. The equation which describes propagation in the 2D model was the following:

$$C_m \frac{\partial V}{\partial t} = \frac{1}{S_v} \left(\frac{\partial}{\partial x} \left(\frac{1}{R_x} \frac{\partial V}{\partial x} \right) + \frac{\partial}{\partial y} \left(\frac{1}{R_y} \frac{\partial V}{\partial y} \right) \right) - I_{ion} \quad (1)$$

where V is membrane potential, C_m is the specific membrane capacitance ($\mu\text{F}/\text{cm}^2$), S_v is the surface-to-volume ratio, I_{ion} is the total ionic current ($\mu\text{A}/\text{cm}^2$), R_x and R_y are internal resistivities in x and y directions (Ωcm).

In the 3D case, we considered a model with cylindrical symmetry. In this case, the 3D analog of eq. 1 can be

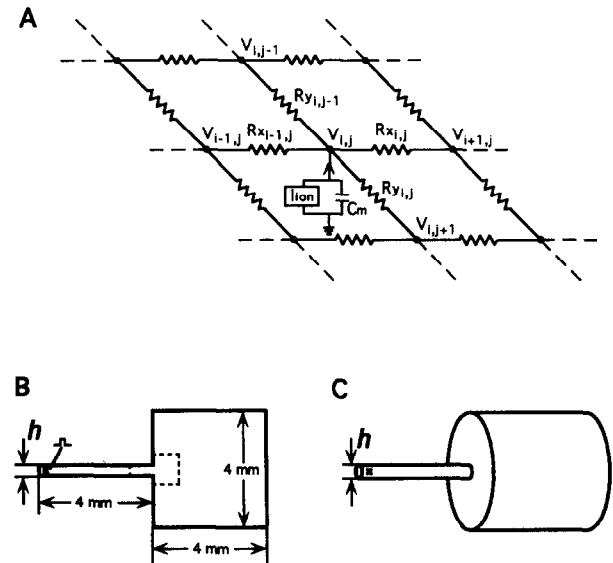


Fig. 1. (A) Electrical equivalent circuit of the anisotropic cardiac sheet. Membrane elements are represented as a capacitance C_m in parallel with ionic current, I_{ion} , described by either Ebihara–Johnson, Beeler–Reuter or Luo–Rudy ionic current models. R_x and R_y are resistive connections between excitable elements in x and y directions respectively. (B and C) 2-dimensional (B) and 3-dimensional (C) structures with an abrupt expansion of a narrow strand into a large medium. h is a strand width (B) or a strand diameter (C). Asterisk indicates the site of stimulation. Only small portion of the medium (indicated by a dashed line in B) was used in subsequent Figures for the presentation of activation maps.

reduced to 2D equation and presented in the following form:

$$C_m \frac{\partial V}{\partial t} = \frac{1}{S_v} \left(\frac{\partial}{\partial x} \left(\frac{1}{R_x} \frac{\partial V}{\partial x} \right) + \frac{1}{y} \frac{\partial}{\partial y} \left(y \frac{1}{R_y} \frac{\partial V}{\partial y} \right) \right) - I_{ion} \quad (2)$$

Here, x corresponds to the axes of symmetry, and y corresponds to the radial coordinate (see Fig. 1C).

To solve eq. 1 numerically, it was divided into isopotential excitable patches of the dimensions Δx and Δy (Fig. 1A). Substituting the right part of the eq. 1 with the difference approximation, the equation for membrane potential of the 2D patch with coordinates i, j is the following:

$$C_m \frac{\partial V_{i,j}}{\partial t} = \frac{1}{S_v} \left[K_{x;i-1,j} (V_{i-1,j} - V_{i,j}) - K_{x;i,j} (V_{i,j} - V_{i+1,j}) + K_{y;i,j-1} (V_{i,j-1} - V_{i,j}) - K_{y;i,j} (V_{i,j} - V_{i,j+1}) \right] - I_{ion} \quad (3)$$

where

$$K_{x;i,j} = \frac{1}{\Delta x^2 R_{x;i,j}}, \quad \text{and} \quad K_{y;i,j} = \frac{1}{\Delta y^2 R_{y;i,j}}$$

describe the resistive links in x and y directions of the element (i, j) . The geometrical shape of the model and the pattern of resistive connections were coded by coefficients $K_{x;i,j}$, $K_{y;i,j}$ which were calculated in advance and stored in arrays. The impermeable boundaries were modeled by setting $K_{x;i,j} = 0$ and $K_{y;i,j} = 0$ at the border elements.

In the 3D case, the corresponding difference approximation is the following:

$$C_m \frac{\partial V_{i,j}}{\partial t} = \frac{1}{S_v} \left[K_{x,i-1,j} (V_{i-1,j} - V_{i,j}) - K_{x,i,j} (V_{i,j} - V_{i+1,j}) + \frac{1}{2j-1} (K_{y,i,j-1} (V_{i,j} - V_{i,j-1}) - K_{y,i,j} (V_{i,j} - V_{i,j+1})) \right] - I_{ion} \quad (4)$$

where

$$K_{x,i,j} = \frac{1}{\Delta x^2 R_{x,i,j}}, \quad \text{and} \quad K_{y,i,j} = \frac{j}{\Delta y^2 R_{y,i,j}}.$$

The equations 3 and 4 were solved using the Peaceman–Rachford alternating-direction implicit algorithm [28]. Space integration steps Δx , Δy were varied in the range from 10 to 50 μm to keep the ratio between the electrotonic space constant and the space integration step at about 20. The ordinary differential equations for the ionic variables were solved by the Rush–Larsen algorithm [29,30]. The time integration step was in the range from 1 to 3 μs depending on the value of maximum sodium conductance. Computer-generated lookup tables with $\Delta V = 0.1$ mV were used to calculate rate constants.

The simulated structures are shown on Fig. 1B and C. The 2D structure consisted of a narrow strand of a width h abruptly emerging into a large area. The corresponding 3D structure was obtained by rotation of the 2-dimensional structure around the axis of symmetry. In this case, h corresponds to the diameter of the strand. The dimensions of the large area and the length of the strand were 4 mm which was about six times larger than electrotonic space constant. Simulations showed that the dimensions of the large area did not affect impulse propagation at the transition point when the dimensions were larger than two space constants. Impulse propagation was initiated at the left end of the strand by injecting current with double threshold strength. To determine the critical width, h_c , propagation was simulated in structures with gradually decreasing strand width and the value for last successful propagation was defined as h_c .

The value for $C_m = 1.0$ $\mu\text{F}/\text{cm}^2$ and $S_v = 0.25$ μm^{-1} were normally used in calculations. Three models describing the kinetics of ionic current I_{ion} were used: the Beeler–Reuter model [25] referred to in the text as the BR model, the Ebihara–Johnson (EJ) model [26], and the Luo–Rudy (LR) model [27]. The reversal potential for the slow inward current was fixed at +70 mV in all models. The critical strand diameter was calculated as a function of maximal sodium conductance, gNa_{max} , and the tissue resistivities, R_x and R_y . From Eq. 1 follows that isotropic variation of tissue resistivities is equivalent to the change in surface-to-volume ratio S_v .

Activation times were determined at the moment when membrane potential reached the value of -60 mV which is close to the threshold potential for the sodium inward current in all models. Selection of this activation criterion

was validated in our previous work [19]. These activation times were used for constructing isochrone activation maps. Simulations were programmed in FORTRAN and carried out on VAX-6410 with Vector Processor.

3. Results

3.1. Slow conduction and conduction block at the abrupt expansion

Fig. 2 demonstrates impulse conduction in the 2D model with an abrupt expansion described by Luo–Rudy ionic current kinetics. In this simulation, the width of the strand (200 μm) was slightly larger than the width necessary for conduction block to occur. Panel A shows an isochronal map of wave propagation across the transition region, Panel B shows the profile of conduction velocity, and Panel C shows the changes in action potential waveshapes. Far from the expansion in the strand, the excitation front was flat (A) and the impulse propagated with a uniform conduction velocity of 52.1 cm/s. Immediately before the transition, conduction slowed (B) and the excitation front became slightly curved. The most prominent changes in activation spread occurred immediately after the transition.

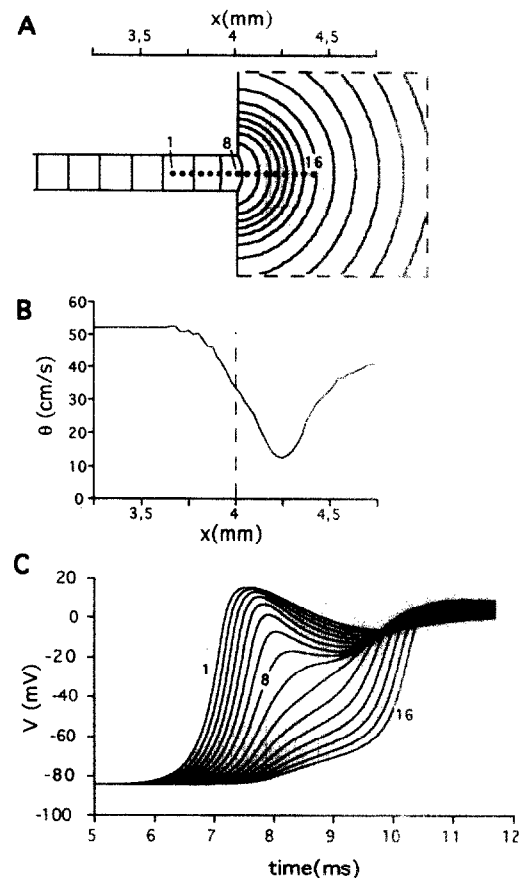


Fig. 2. Slowing of conduction at an abrupt expansion. (A) Isochrone map (interval 0.3 ms) of wave propagation in a portion of medium indicated by the dashed line in B. Strand width = 200 μm . The distance, x , is measured from the left end of the strand. (B) Conduction velocity (θ) profile across the transition. (C) Recordings of action potentials (V) at selected points depicted in A. Luo–Rudy model with $gNa_{max} = 23$ mS/ cm^2 , $R_x = R_y = 450$ Ωcm .

The excitation front acquired a nearly-circular shape and conduction velocity decreased to 12.5 cm/s. The minimal conduction velocity was reached in the large area at a distance of 250 μm from the transition. Afterwards, the conduction accelerated and slowly approached the value for conduction velocity in the strand. Action potential upstrokes (C) had specific biphasic shapes with two rising phases typical for the geometrical expansion. Similar waveshapes were experimentally observed at PM junctions [11,31,32] and at the junction between cultured cell strands and a large cell area [19].

The decrease of the strand width, h , to 175 μm produced conduction block as shown on Fig. 3 while propagation was successful in the reversed direction (not shown). Voltage traces (Panel B) demonstrated that the action potential amplitude and duration gradually diminished across the transition. Such a gradual decrease of amplitude has been observed experimentally at a transition from a narrow cell strand into a large area in cultured cell monolayers using high-resolution optical recordings [18,19]. Because of the gradual changes in the voltage waveshapes, it was not possible to distinguish between actively generated responses and purely electrotonic potentials and therefore to locate conduction block. However, the site of conduction block could be determined from the traces of sodium inward current, i_{Na} , depicted on Panel C. In contrast to the voltage changes, the amplitude of the sodium current first

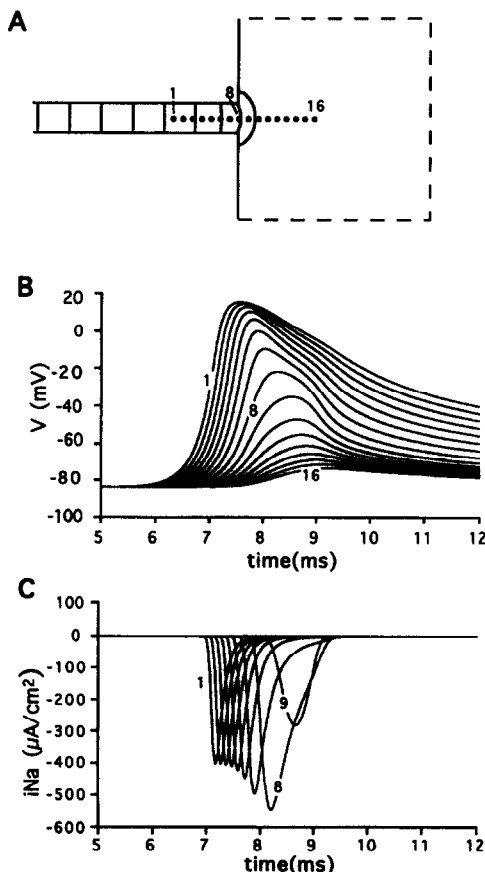


Fig. 3. Conduction block at abrupt expansion. Strand width = 175 μm . Other parameters are the same as on Fig. 2. (A) Isochrone map with interval of 0.3 ms. (B and C) Recordings of action potentials (V) and sodium current (i_{Na}) at the selected points depicted in A.

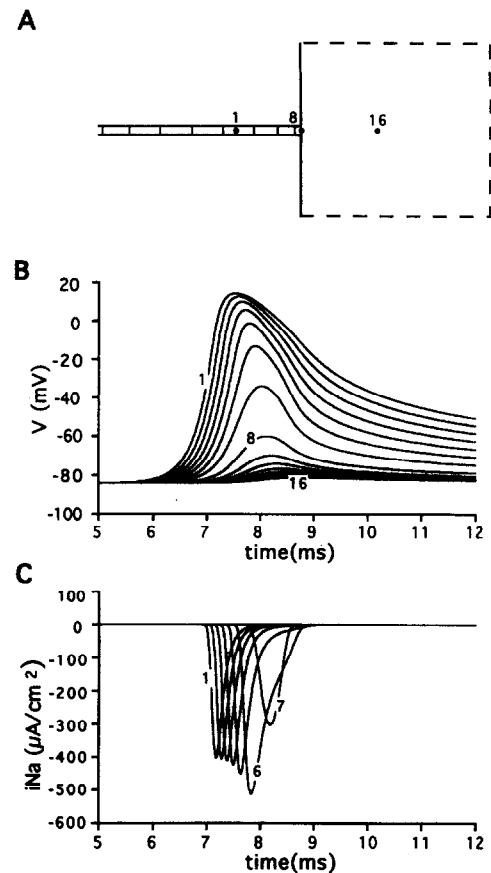


Fig. 4. Conduction block at a strand with the width of 50 μm . Other parameters are the same as on Fig. 2. (A) Isochrone map with interval of 0.3 ms. (B and C) Recordings of action potentials (V) and sodium current (i_{Na}) at the selected points.

increased at the transition and then almost abruptly dropped to zero; no sodium current was activated at point 10 and beyond. The initial increase of the sodium current was caused by the slowing of the depolarisation rate near the transition which allowed more time for the activation of sodium current. As judged by the abrupt decrease of the current amplitude, conduction block occurred between points 9 and 10 at a distance between 50 μm and 100 μm from the expansion. The maximal membrane potential at these two points was -35 mV and -47 mV respectively. These values are slightly higher than the threshold potential in the LR model (-60 mV). No sodium current was activated at sites 10 through 16. Therefore, the voltage traces at these points were interpreted as purely electrotonic potentials.

Block of conduction from a strand of subcritical width ($h = 175$ μm , Fig. 3) occurred beyond the transition, i.e. a small circular nucleus of excitation was present in the large area. As depicted on Fig. 4, the further decrease of the strand width to 50 μm resulted in more proximal localisation of conduction block. In this case, more profound changes in action potential waveshapes and a more rapid decrement of conduction as compared to Fig. 3 were observed. The traces of the sodium current (Panel C) showed that the site of the conduction block was located between points 7 and 8 at a distance of 50 μm before the transition. Therefore the activation wave did not leave the strand.

3.2. Conduction across an isthmus

Cabo et al. recently investigated impulse conduction in a different structure consisting of a short isthmus connecting two large areas of ventricular myocardium [16]. To compare the results obtained at the geometrical expansion with the isthmus-type geometry we modelled the isthmus structure as illustrated on Fig. 5A. The length of the isthmus was fixed ($50 \mu\text{m}$) and conduction was studied as the function of the isthmus width. Otherwise the model parameters were the same as for the simulations presented on Fig. 2–4 (Luo–Rudy ionic model). Several differences in impulse conduction across the isthmus were found with respect to the strand structure. Firstly, impulse conduction was blocked at a smaller isthmus width than in the case of the strand. The critical isthmus width was $150 \mu\text{m}$ which is 25% smaller than the critical strand width. Secondly, the characteristics of conduction near the transition region were different. Fig. 5 shows impulse conduction across an isthmus with the critical width of $150 \mu\text{m}$. Excitation was initiated by stimulating all elements at the left border of the model simultaneously. As in the strand, the excitation front was flat far from the transition (Panel A) and parameters of propagation were the same as in the strand. In contrast to the strand, the activation front became concave before the isthmus (Panel A), conduction accelerated (Panel B) and the action potential amplitude transiently increased

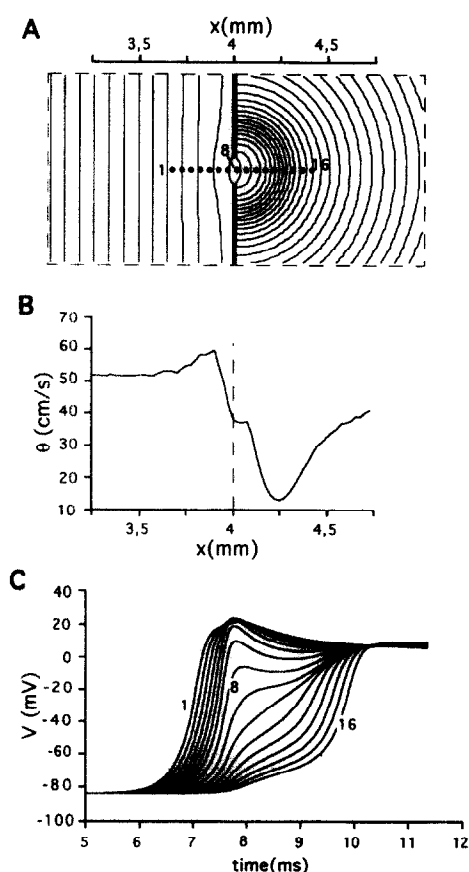


Fig. 5. Impulse conduction across an isthmus. Isthmus length = $50 \mu\text{m}$, isthmus width = $150 \mu\text{m}$. (A) Isochrone map of activation, isochrone interval of 0.15 ms. The distance, x , is measured from the left end of the strand. (B) Conduction velocity (θ) profile across the transition. (C) Recordings of action potentials (V) at the selected points depicted in A. Luo–Rudy model with $gNa_{max} = 23 \text{ mS/cm}^2$, $R_x = R_y = 450 \Omega \text{ cm}$.

Table 1

Critical strand width, h_c , in different ionic models

Ionic model	gNa_{max} (mS/cm ²)	dV/dt_{max} (V/s)	θ_o (cm/s)	h_c (μm)
EJ	40	187.9	51.0	175
LR	23	189.5	52.1	200
BR	6.9	188.3	60.1	175

EJ, LR, and BR indicate Ebihara–Johnson, Luo–Rudy, and Beeler–Reuter ionic models respectively; gNa_{max} indicates maximum sodium conductance; dV/dt_{max} and θ_o indicate maximal upstroke rate of rise and conduction velocity measured during uniform propagation of a planar wave.

(Panel C). In the strand, conduction slowed and the amplitude decreased at the corresponding region (Fig. 2).

3.3. Critical strand width in different ionic models

Three ionic models are preferentially used in literature for the description of ionic currents in ventricular myocardium referred as Beeler–Reuter [25], Ebihara–Johnson [26], and Luo–Rudy [27] models. Therefore we compared transitional action potential waveshapes and values for critical strand width, h_c , in all three models and found similar results. Action potential upstrokes exhibited characteristic biphasic shapes during impulse conduction across geometrical expansion as shown on Fig. 2 in all three models. In each case, conduction block occurred at some value of the strand diameter which depended on the level of excitability. To compare the values for h_c among the different models, the excitability of the models was adjusted to give comparable values of the maximal upstroke rate of rise, dV/dt_{max} , during steady-state propagation. This meant increasing gNa_{max} from 23 to 40 mS/cm² in the EJ model and from 4 to 6.9 mS/cm² in the BR model to match dV/dt_{max} of the Luo–Rudy model. The models were assumed to be isotropic and passive model parameters were set equal ($R = 450 \Omega \text{ cm}$). Table 1 contains the results of calculations of h_c in the three models along with dV/dt_{max} and conduction velocity, θ_o , of a uniformly propagating planar wave. The accuracy of calculation of h_c was determined by the size of the excitable elements which was $25 \mu\text{m}$ in these simulations. It can be seen that the differences in h_c between the three models were within the computational precision. Also, conduction velocity was essentially the same in EJ and LR models. The close results obtained in EJ and LR models are due to the similarity in the description of the fast sodium current in these two models (see Discussion). The conduction velocity in the BR model was about 20% larger than in the EJ and LR models at the comparable level of dV/dt_{max} .

3.4. Critical strand width in 3-dimensional model vs. 2-dimensional model

The electrical load imposed by the large tissue area on the narrow strand depends on the dimensionality of the large area. In 3-dimensional tissue the electrical load is larger than in the 2-dimensional tissue. Thus h_c is expected to be different depending on whether the strand diverges into a thin sheet of myocardium or into the

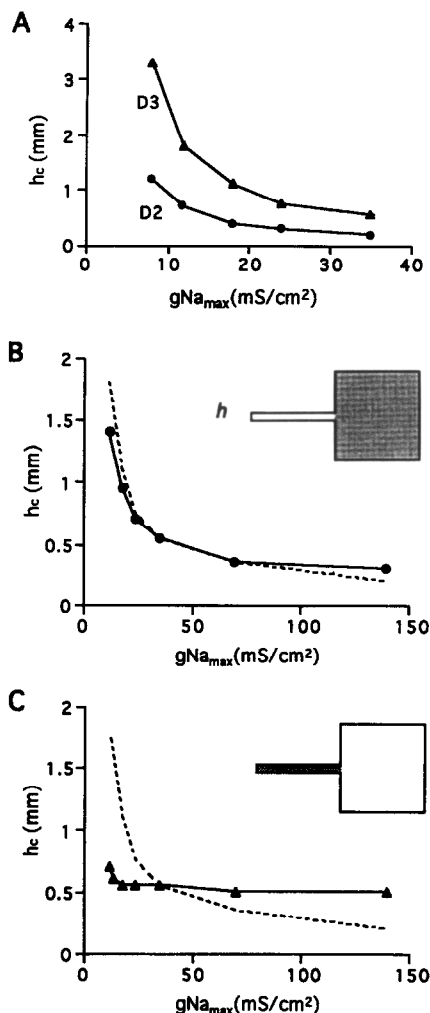


Fig. 6. Dependence of critical strand width, h_c , on maximum sodium conductance gNa_{max} . (A) Effect of uniform change in gNa_{max} in the two- (D2) or three- (D3) dimensional models (EJ model with $R = 450 \Omega\text{cm}$). (B and C) Effect of a nonuniform change of gNa_{max} in the 2D model. Dashed curves correspond to the control when excitability was changed uniformly throughout the model. Shaded areas in the inset indicate the parts of the model where gNa_{max} was altered: the large area (B) or the strand (C).

myocardial wall. In order to compare the 2D with 3D models, h_c was calculated in 2D and 3D models at different values of excitability.

Fig. 6A shows the dependence of h_c on maximum sodium conductance gNa_{max} for homogeneous 2D and 3D models described by EJ ionic current kinetics. For a $gNa_{max} = 24 \text{ mS/cm}^2$ used in the original formulation of the model [26], h_c was 0.3 and 0.8 mm for 2D and 3D models, respectively. At $gNa_{max} = 35 \text{ mS/cm}^2$ which more closely represents adult myocardium, h_c was 0.2 mm (2D model) and 0.55 mm (3D model). A decrease of excitability to 8 mS/cm^2 produced a rapid increase of h_c . The maximal values of h_c reached in these simulations were 1.2 mm in the 2D case and 3.3 mm in the 3D case. At all values of gNa_{max} h_c in the 3D model was larger than in the 2D model by a factor of 2.7.

3.5. Effect of inhomogeneity in gNa_{max}

The success of impulse conduction across a tissue expansion depends on both the properties of the strand

(source of current) and the large area (current sink). In order to estimate the relative contributions of the excitabilities of the strand and of the large area, we calculated h_c upon changing gNa_{max} either in the strand or in the large area. Panel B on Fig. 6 shows the effect of gNa_{max} changes in the large area alone in the 2D model described by EJ kinetics. In this case, the gNa_{max} in the strand was kept constant at a level of 35 mS/cm^2 . Panel C shows the effect of changes of gNa_{max} in the strand when the excitability of the large area was constant. For comparison, the dashed lines represent the effect of a uniform change of gNa_{max} in the whole model. As shown on Panel B, h_c was critically dependent on gNa_{max} of the large area. By contrast, h_c was almost independent of the excitability of the strand (C). This suggests that conduction block at the site of abrupt change of electrical load is mainly dependent on excitable properties of the cells distal to transition (large medium) and less on the excitability of the proximal cells (strand).

3.6. Dependence of h_c on axial resistivity

In our previous work we have demonstrated that the increase of intracellular resistivity in the large area facilitated impulse conduction across a simulated geometrical expansion [19]. Here we further investigate this effect and evaluate the dependence of h_c on intracellular resistivity and anisotropy in 2D and 3D models.

Dependence on resistivity in 2D vs. 3D models. The uniform increase of axial resistivity, R , facilitated impulse

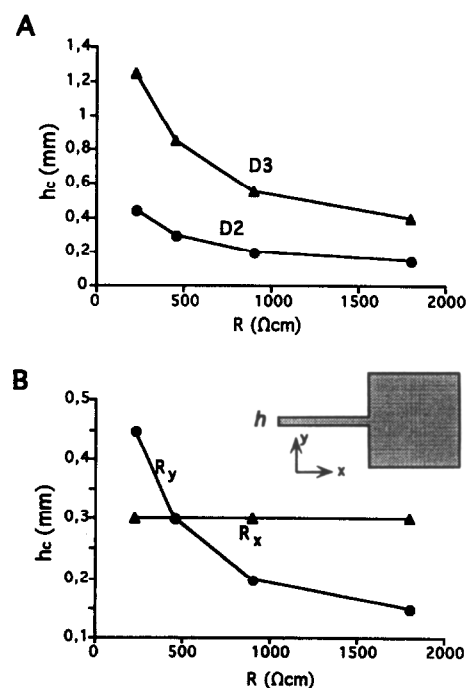


Fig. 7. Dependence of h_c on intracellular resistivity R . (A) Effect of a uniform change in R in isotropic 2D and 3D models (EJ model with $gNa_{max} = 24 \text{ mS/cm}^2$). (B) Effect of anisotropic change in R in a uniform 2D model. The longitudinal resistivity, R_x , was changed in the whole model while transverse resistivity, R_y , was kept constant (curve “ R_x ”) or, alternatively, R_y was altered with constant R_x (curve “ R_y ”). The increase of transverse resistivity produced a decrease in h_c while a change in longitudinal resistivity did not affect h_c .

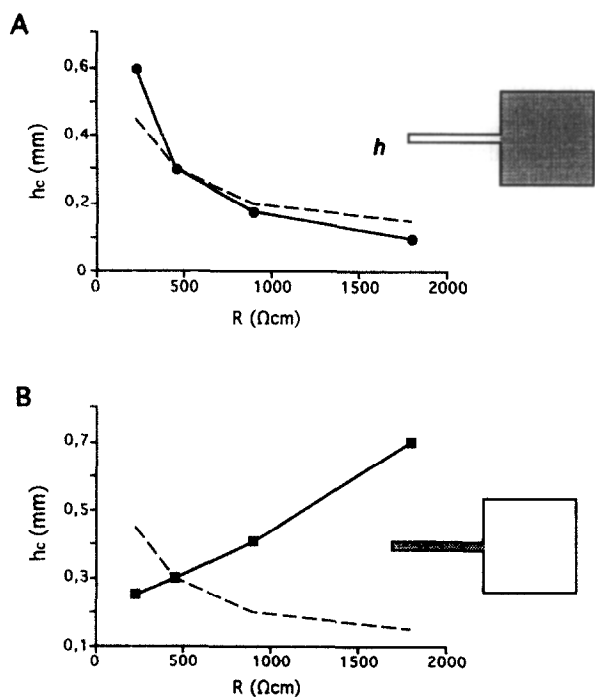


Fig. 8. Effect of a nonuniform change in intracellular resistivity on h_c . (A) Resistivity R was varied in the large area. (B) Resistivity of the strand was changed. For comparison, the dashed curves correspond to the control when resistivity was changed uniformly throughout the model. Shaded areas in the insets indicate the parts of the model where R was altered. EJ model with $gNa_{max} = 24$ mS/cm².

conduction across the expansion. When the strand width was narrow enough to produce conduction block at normal R , the increase of R prevented the block. Conduction block was produced again at a smaller value of the strand width. Fig. 7A shows the dependence of h_c on uniformly distributed resistivity in isotropic 2D and 3D models described by EJ kinetics with $gNa_{max} = 24$ mS/cm². Integration steps in these simulations were decreased with increasing intracellular resistivity, R , in order to keep a constant ratio (~ 20) between the electronic space constant and the space integration step (see Methods). The dependencies were well fitted by the inverse square-root relation $h_c \sim 1/R^{1/2}$ in both 2D and 3D models. In the 3D model, h_c was larger than that in the 2D model by a constant factor of 2.7. This factor was the same as in the case when gNa_{max} was varied (Fig. 6A).

Effect of anisotropy. Fig. 7B demonstrates the effect of an anisotropic change in the axial resistivity in both the strand and the large area. In the first case, the longitudinal resistivity (R_x) was uniformly changed while transverse resistivity was kept constant ($R_y = 450$ Ωcm). On the second plot, the resistivity in the transverse direction (R_y) was varied with constant R_x . Only the transverse resistivity affected h_c while the longitudinal resistivity had no effect.

Inhomogeneous change of resistivity. Fig. 8 shows the effects of inhomogeneous changes in resistivity on h_c in the isotropic 2D model. As depicted on Panel A, h_c decreased when the resistivity of the large area alone was increased and the resistivity of the strand was kept con-

stant (450 Ωcm). The dependence of h_c on R was rather close to the change in h_c upon a uniform variation of resistivity (dashed line). An entirely different result was obtained when the strand resistivity was altered (Panel B). In this case, the increase of resistivity resulted in an increase of h_c .

3.7. Modeling of geometrical transition in heart cell culture

Recently, h_c was measured in 2-dimensional monolayers of cultured neonatal rat heart cells consisting of narrow strands abruptly diverging into a large cell area [19]. In order to test the predictive value of the model, the model was adjusted to fit the morphological and electrophysiological properties of cultured cell strands and monolayers. Two structural features of experimental preparations were simulated. Firstly, the geometrical transition from a strand into the large area was modified to include a funnel, i.e. a final portion of the strand with gradually increasing width. In cell cultures, the funnel had a length of 100 μm and a width of about 100 μm immediately before the large area. Secondly, a difference in intracellular resistivity between the strand and the large area was included to reproduce the difference in conduction velocity between the strand and the large area (34 cm/s vs. 25 cm/s [19]). In addition, the smaller cell size and the flatter shape in cell cultures compared to adult cells were considered by increasing the surface-to-volume ratio, S_v . These properties were included in the structure which is shown on Fig. 9A. The funnel had a simple linear shape with a length of 100 μm and a width of 120 μm . The Ebihara–Johnson model with $gNa_{max} = 35$ mS/cm² and $S_v = 0.67$ μm^{-1} was used. The resistivity was 400 Ωcm within the strand and gradually increased to 800 Ωcm upon transition through the funnel into the large area. During steady-state propagation

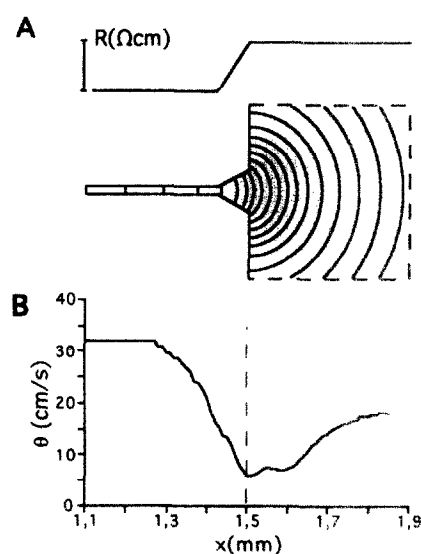


Fig. 9. Impulse conduction in a structure with a terminal funnel and a gradient of R . (A) Isochrone map of activation with time interval of 0.3 ms. Strand width = 30 μm , funnel length = 100 μm , funnel expansion = from 30 to 120 μm . Intracellular resistivity increases within the funnel in a linear fashion from 400 Ωcm to 800 Ωcm . (B) Conduction velocity (θ) profile across the transition. Ebihara–Johnson model with $gNa_{max} = 35$ mS/cm², $S_v = 0.67$ Ωcm .

the maximal upstroke rate of rise was 172 V/s, the conduction velocity within the strand and within the large area were 32 cm/s and 23 cm/s, respectively. In these conditions, the critical strand width which resulted in successful propagation was 30 μm . Panel B demonstrates the profile of conduction velocity upon transition into the large area. In contrast to impulse conduction through a simple step-wise expansion (Fig. 2), conduction velocity was minimal at the transition to the large area which is consistent with experimental findings [19].

4. Discussion

4.1. Evaluation of the computer model

1D vs. 2D and 3D simulations. The effect of an abrupt increase in cable diameter on impulse conduction has been extensively studied in 1D models of axons or of a cardiac strand [5–9]. Two differences exist between a 1D cable and multidimensional (2D and 3D) models. Firstly, in the 1D cable with an abrupt increase in diameter (from h to h'), impulse conduction through the transition region depends on the ratio h'/h , not on the real values of h' or h [6,7]. In contrast, in multidimensional models, propagation is dependent on the real value of the strand diameter. Therefore a critical diameter, h_c , can be obtained instead of the critical ratio h'/h . Another difference between conduction in 1D versus conduction in 2D/3D models is related to the effect of axial resistivity. In the 1D case, a uniform change of resistivity R does not affect impulse conduction through the expansion and does not change the critical ratio h'/h , while an uniform increase of R in 2D and 3D models facilitates impulse conduction and reduces h_c (Fig. 7A). This difference is due to the presence of a transverse resistivity in the 2D and 3D models (Fig. 7B).

Comparison of different ionic models. We obtained essentially the same values for h_c in all three ionic models of ventricular excitation when excitabilities were adjusted to give comparable values for the maximal upstroke rate of rise. In addition, the values for conduction velocities were close in the EJ and LR models. This is not surprising since these two models share a very similar description for the fast sodium current which is the most important current during the action potential upstroke. There are two differences (besides the differences in gNa_{max}) in the sodium current kinetics between LR and EJ models: (1) the j variable in the LR model which describes the kinetics of sodium current reactivation, and (2) the more positive reversal potential, E_{Na} , in LR model as compared to EJ model. The j variable does not change during the upstroke of an action potential and therefore this difference is not important for the depolarisation phase. The higher value of E_{Na} in LR model as compared to EJ model (54 mV vs. 29 mV) results in a bigger driving force for the sodium current and, hence, in faster depolarisation. However, this increase in the sodium current is compensated by the smaller gNa_{max} . Other differences between the two models include a slightly more positive resting membrane potential and a smaller membrane resistance in the LR

model as compared to the EJ model. The higher resting potential in the LR model accelerates membrane depolarisation. Again, this effect is compensated by adjustment of gNa_{max} .

The similarity between the EJ and LR models is valid only for propagation of a single wave or for very slow stimulation rates. Different results can be expected at high excitation rates because significant differences exist between EJ and LR models in the formulation of ionic currents during the repolarisation phase.

Continuity of intracellular resistivity. The facilitating effect of increasing intracellular resistivity on impulse conduction across an abrupt expansion and the corresponding decrease of h_c (Fig. 7) is limited to tissue with continuous uniform properties. In real myocardium, internal resistivity is distributed nonuniformly between the cytoplasm and the intercellular junctions. When cells are well coupled, the effect of the nonuniformity is likely to be small and the continuous cable equation adequately describes impulse propagation on a macroscopic scale [8,33–35]. However, when intercellular coupling decreases, the nonuniform distribution of resistivity must be taken into account at some level of uncoupling. Thus our model may not be appropriate for certain pathophysiological situations when R increases beyond a critical value. A significant deviation from the behaviour of a continuous cable was observed when axial resistivity increased about five-fold in the one-dimensional computer model [35]. In conditions of an additionally reduced excitability such as in myocardial ischemia, linear cable analysis became invalid when R increased approximately by 200% [36].

Another limitation of this model is related to the assumption that the resistance of the extracellular space is negligible. Such an assumption is valid in the case of superfused cultured cell monolayers [19], and to some extent in the case of a superfused isolated thin sheet of epicardial tissue. In case of anisotropic tissue with a restricted extracellular space, the results of this model would be quantitatively applicable when the anisotropic ratios for intra- and extracellular resistivities are equal.

4.2. Estimation of critical strand width in ventricular tissue and cell cultures

One of the main goals of this study was to estimate h_c quantitatively for cardiac tissue. Since the ionic models used in these simulations were developed to describe excitation dynamics of ventricular myocytes, we discuss below two types of ventricular tissue where theoretical and experimental attempts to evaluate critical size were made previously: ventricular myocardium and cultured cell monolayers.

Ventricular myocardium. There is relatively close agreement among the computations of the different types of “critical sizes” in ventricular myocardium. Tyson and Keener estimated the critical diameter of a tissue nucleus which needs to be excited by a central stimulus to get a centrifugal propagated response. Using a theory which assumes a linear dependence of the velocity of activation

front on front curvature they obtained a value of 200 μm [23]. Winfree estimated the same parameter from strength-duration curves and arrived at a value of 300 μm for 3D tissue [24]. The other critical parameter, the “liminal length” (size of a tissue area generating inward membrane current during point stimulation [20,21]) was calculated by Joyner et al. in the 2-dimensional Beeler–Reuter model and values between 200 μm and 370 μm were found for different levels of gNa_{max} [22]. We have previously reported a value of 300 μm for the critical strand width in the isotropic 2D Ebihara–Johnson model [37]. The slightly smaller critical strand width obtained in the present study in different ionic models (175–200 μm) is due to the larger assumed value for the surface-to-volume ratio and, hence, a smaller space constant. Cabo et al. calculated the critical width of a short isthmus connecting two large excitable areas [16]. Comparison of the “isthmus geometry” with the “strand geometry” yielded a 25% smaller value of h_c in the strand (see Figs. 2 and 5). The difference between h_c in the two geometries is explained by the acceleration of conduction and the increase in action potential amplitude in front of the isthmus. In the case of the diverging strand, no increase in conduction velocity or amplitude was present (Fig. 2B). To calculate h_c in anisotropic tissue, the orientation of the longitudinal cell axis with respect to the direction of propagation must be taken into account. Depending on cell orientation, anisotropy will reduce h_c by a factor of 1 to 3 if a ratio of 10 is assumed for anisotropic differences between R_x and R_y [38]. This factor is derived from extrapolation of the dependence $h_c(R_y)$ shown on Fig. 7 to the R_y value of 5000 Ωcm . As a whole, the estimates for the different values of critical size vary between 60 and 200 μm in 2-dimensional tissue.

For the 3-dimensional tissue, our results predict a value 2.7 times larger than in 2-dimensional case (Fig. 6A and 7A). Thus, h_c in anisotropic 3D tissue is in the range of 160–500 μm . This is consistent with the estimations of critical size of excitation as mentioned above. All estimates are significantly larger than the diameter of terminal Purkinje fibers which can be less than 100 μm [39]. Several factors may be taken into account to explain this discrepancy. Firstly, the intracellular longitudinal resistivity of Purkinje fibers has been reported to be lower than in the working myocardium [34,40,41]. According to our simulations (Fig. 8A) this difference will reduce h_c . Secondly, the funnel hypothesis [11] postulated the presence of a gradually expanding portion within the PM junction which facilitates impulse transmission. Thirdly, conduction may be facilitated by the presence of a resistive barrier between the two tissues which may reduce the load of large ventricular mass on Purkinje fibers [7,42].

Cell culture. Recently, h_c was measured in cultured cell monolayers [19]. In these experiments, propagation was investigated in long cell strands of variable width diverging into a large cell area, i.e. in tissue with a geometry analogous to the simulated structures. In such cultures, h_c was 30 μm which is considerably lower than the computed 2-dimensional h_c value for a simple step-wise expansion. However, when the specific geometrical and func-

tional properties of cultured cell monolayers were taken into account, a close quantitative agreement was obtained.

4.3. Effect of tissue inhomogeneities

In general, success or failure of impulse conduction depend on the electrical properties of both the strand (current source) and the large area (current sink). Several situations correspond to a case where the passive and active properties in the strand differ from the large area. One example is the junction between a Purkinje fiber and ventricular muscle. Another example is represented by cultured cell monolayers where cell strands and the large area have different intracellular resistivities between two parts [18,19]. Our results demonstrate that there is a considerable difference between the contributions of the source and the sink in impulse transmission at a geometrical expansion: varying maximum sodium conductance in the strand had little effect on impulse propagation in comparison to the changes in excitability of the large area (Fig. 6). We can conclude that the critical size is mainly determined by the excitable properties of the large area. This simplifies the modelling of the expansion region since only the excitable properties of the large region need to be simulated precisely. The strand gNa_{max} does not substantially influence h_c because the amount of axial current supplied by the strand into the large area is mainly dependent on the voltage difference between the two parts which is equal to the action potential amplitude. The action potential amplitude does not change significantly with variation of gNa_{max} .

In contrast to the changes in excitability, the effects of changes in resistivity in the strand and in the large area were opposite (Fig. 8). The increase in the resistivity of the large area facilitated impulse conduction across the expansion and reduced critical strand width. This is explained by the reduction of the electrical load imposed by the large area on the strand. In contrast, the increase of the strand resistivity impaired impulse conduction across the expansion. The explanation for the latter effect is that the large strand resistivity reduced the amount of axial current flowing from the strand into the large area. A difference in resistivity between the strand and the large area may contribute to the success of impulse conduction at the PM junction as discussed above.

4.4. Critical curvature or impedance mismatch?

It has been suggested that conduction slowing and block at the site of a geometrical expansion are determined by the curvature of the excitation front emerging from the narrow isthmus rather than by the impedance mismatch between the small and the large parts [16]. Following this line of reasoning, it can be suggested that h_c is determined by a critical value for the curvature in the large area. Our results partly support this point of view. In particular, the block of conduction from a strand of subcritical width occurred beyond the transition (Fig. 3). Since a small area of excitation was formed in the large area, the dissipation of excitatory current from a highly curved excitation front contributed to the conduction block. Also, the finding that

the changes in h_c were largely independent of the strand excitability and were mainly attributed to the modification of gNa_{max} in the large area is in agreement with this idea. Several considerations indicate that the curvature alone does not fully describe all changes related to the geometrical expansion, however. Firstly, the conduction block in a very narrow strand may occur without the excitation wave entering the large area (Fig. 4). Since the curvature of the excitation front did not change within the strand, the block in this case can be explained by the impedance mismatch between the strand and the large area alone. Secondly, the consideration of the critical curvature does not correctly predict differences of critical strand widths in 3- vs. 2-dimensional models. Indeed, the value of curvature of a spherical wave front in a 3-dimensional medium is two times larger than the curvature of a circular front in a 2-dimensional medium with the same radius. Therefore, critical strand width should be two times larger in the 3D than in the 2D model. However, in our simulations the 3D-to-2D ratio of h_c was 2.7. The stronger dependence of the critical strand width on tissue dimensionality than predicted from the curvature hypothesis suggest that the impedance mismatch between the strand and the large area contributes substantially to conduction changes at the geometrical expansion. Thus, both the front curvature and the impedance mismatch appear to determine the geometry-dependent slowing of conduction and conduction block at the site of abrupt geometrical expansion.

Acknowledgments

This work was supported by the Bonizzi–Theler Foundation the Swiss Heart Foundation, and the Swiss National Science Foundation

References

- [1] Mendez, C, Mueller, WJ, Merideth J, Moe GK. Interaction of transmembrane potentials in canine Purkinje fibers and at Purkinje fiber–muscle junctions. *Circ Res* 1969;34:361–372.
- [2] Joyner RW, van Capelle FJL. Propagation through electrically coupled cells. How a small SA node drives a large atrium. *Biophys J* 1986;50:1157–1164.
- [3] De la Fuente D, Sasyniuk B, Moe GK. Conduction through a narrow isthmus in isolated canine atrial tissue. A model of the W–P–W syndrome. *Circulation* 1971;54:803–809.
- [4] Smith JH, Green CR, Peters NS, Rothery S, Severs NJ. Altered patterns of gap junction distribution in ischemic heart disease — an immunohistochemical study of human myocardium using laser scanning confocal microscopy. *Am J Pathol* 1991;139:801–821.
- [5] Khodorov BI, Timin YN, Vilenkin SY, Gul'ko FN. Theoretical analysis of the mechanisms of conduction of a nerve pulse over an inhomogeneous axon. I. Conduction through a portion with increased diameter. *Biofizika* 1969;14:304–315.
- [6] Goldstein SS, Rall W. Changes of action potential shape and velocity for changing core conductor geometry. *Biophys J* 1974;14:731–757.
- [7] Joyner RW, Veenstra R, Rawling D, Chorro A. Propagation through electrically coupled cells. Effects of a resistive barrier. *Biophys J* 1984;45:1017–1025.
- [8] Henriquez CS, Plonsey R. Effects of resistive discontinuities on waveshape and velocity in a single cardiac fibre. *Med Biol Eng Comput* 1987;25:428–438.
- [9] Quan W, Rudy Y. Unidirectional block and reentry of cardiac excitation: a model study. *Circ Res* 1990;66:367–382.
- [10] Sahakian AV, Myers GA, Maglaveras N. Unidirectional block in cardiac fibers — effects of discontinuities in coupling resistance and spatial changes in resting membrane potential in a computer simulation study. *IEEE Trans Biomed Eng* 1992;39:510–522.
- [11] Mendez C, Muller WJ, Uguiguaga X. Propagation of impulses across the Purkinje fiber — muscle junctions in the dog heart. *Circ Res* 1970;26:135–150.
- [12] Sasyniuk BI, Mendez C. A mechanism for reentry in canine ventricular tissue. *Circ Res* 1971;28:3–15.
- [13] Overholt ED, Joyner RW, Veenstra RD, Rawling D, Wiedmann R. Unidirectional block between Purkinje and ventricular layers of papillary muscle. *Am J Physiol* 1984;247:H584–H595.
- [14] Spach MS, Miller WTI, Dolber PC, Kootsey JM, Sommer JR, Mosher CE. The functional role of structural complexities in the propagation of depolarization in the atrium of the dog. Cardiac conduction disturbances due to discontinuities of effective axial resistivity. *Circ Res* 1982;50:175–191.
- [15] Inoue H, Zipes DP. Conduction over an isthmus of atrial myocardium in vivo: a possible model of Wolf–Parkinson–White syndrome. *Circulation* 1987;76:637–647.
- [16] Cabo C, Pertsov AM, Baxter WT, Davidenko JM, Gray RA, Jalife J. Wave-front curvature as a cause of slow conduction and block in isolated cardiac muscle. *Circ Res* 1994;75:1014–1028.
- [17] Fast V, Kléber A. Tissue geometry as a determinant of unidirectional conduction block: assessment of microscopic excitation spread by optical mapping in patterned myocyte cultures. *Circulation* 1993;88:1–623.
- [18] Rohr S, Salzberg BM. Characterization of impulse propagation at the microscopic level across geometrically defined expansions of excitable tissue: multiple site optical recording of transmembrane voltage (MSORTV) in patterned growth heart cell cultures. *J Gen Physiol* 1994;104:287–309.
- [19] Fast V, Kléber A. Cardiac tissue geometry as a determinant of unidirectional conduction block: assessment of microscopic excitation spread by optical mapping in patterned cell cultures and in a computer model. *Cardiovasc Res* 1995;29:697–707.
- [20] Noble D. The relation of Rushton “liminal length” for excitation to the resting and active conductances of excitable cells. *J Physiol* 1972;226:573–591.
- [21] Fozzard HA, Schoenberg M. Strength-duration curves in cardiac Purkinje fibres: effects of liminal length and charge distribution. *J Physiol* 1972;226:593–618.
- [22] Ramza BM, Joyner RW, Tan RC, Osaka T. Cellular mechanism of the functional refractory period in ventricular muscle. *Circ Res* 1990;66:147–162.
- [23] Tyson JJ, Keener JP. Singular perturbation theory of traveling waves in excitable media. *Physica D* 1988;32:327–361.
- [24] Winfree AT. The electrical thresholds of ventricular myocardium. *J Cardiovasc Electrophysiol* 1990;1:393–410.
- [25] Beeler GW, Reuter H. Reconstruction of the action potential of ventricular myocardial fibres. *J Physiol* 1977;268:177–210.
- [26] Ebihara L, Johnson EA. Fast sodium current in cardiac muscle. A quantitative description. *Biophys J* 1980;32:779–790.
- [27] Luo CH, Rudy Y. A model of the ventricular cardiac action potential — depolarization, repolarization, and their interaction. *Circ Res* 1991;68:1501–1526.
- [28] Peaceman DW, Rachford HH. The numerical solution of parabolic and elliptic differential equations. *J Soc Indust Appl Math* 1955;3:28–41.
- [29] Rush S, Larsen H. A practical algorithm for solving dynamic membrane equations. *IEEE Trans Biomed Eng* 1978;BME-25:389–392.
- [30] Victorri B, Vinet A, Roberge FA, Drouhard J-P. Numerical integration in the reconstruction of cardiac action potentials using Hodgkin–Huxley-type models. *Computers in Biomed Res* 1985;18:10–23.
- [31] Alanis J, Benítez D. Transitional potentials and the propagation of impulses through different cardiac cells. In: Sano, T, Mizuhira, V, Matsuda, K eds. *Electrophysiology and Ultrastructure of the Heart*. Tokyo: Bunkodo, 1967:153–175.

- [32] Bukauskas FF, Sakson MY, Kukushkin NI. Discrete zones of the electrical connexion of Purkinje terminals with muscle fibres in the canine ventricle. *Biofizika* 1976;21:887–892.
- [33] Joyner RW. Effects of the discrete pattern of electrical coupling on propagation through an electrical syncytium. *Circ Res* 1982;50:192–200.
- [34] Kléber AG, Riegger CB. Electrical constants of arterially perfused rabbit papillary muscle. *J Physiol (Lond)* 1987;385:307–324.
- [35] Rudy Y, Quan W. A model study of the effects of the discrete cellular structure on electrical propagation in cardiac tissue. *Circ Res* 1987;61:815–823.
- [36] Kléber AG, Riegger CB, Janse MJ. Electrical uncoupling and increase of extracellular resistance after induction of ischemia in isolated, arterially perfused rabbit papillary muscle. *Circ Res* 1987;61:271–279.
- [37] Fast VG, Kléber AG. Current-to-load mismatch in Purkinje–muscle junction: evaluation of critical fiber diameter by 2-dimensional simulation. *Circulation* 1991;84(suppl II):II-325 (abstract).
- [38] Clerc L. Directional differences of impulse spread in trabecular muscle from mammalian heart. *J Physiol (Lond)* 1976;255:335–346.
- [39] Glomset DJ, Glomset ATA. A morphology study of the cardiac conduction system in ungulates, dog, and man. *Am Heart J* 1940;20:677–701.
- [40] Weidmann S. The electrical constants of Purkinje fibres. *J Physiol (Lond)* 1952;118:348–360.
- [41] Weidmann S. Electrical constants of trabecular muscle from mammalian heart. *J Physiol (Lond)* 1970;210:1041–1054.
- [42] Tranum-Jensen J, Wilde AAM, Vermeulen JT, Janse MJ. Morphology of electrophysiologically identified junctions between Purkinje fibers and ventricular muscle in rabbit and pig hearts. *Circ Res* 1991;69:429–437.