



## University of Dundee

### Contribution of cystatin C- and creatinine-based definitions of chronic kidney disease to cardiovascular risk assessment in 20 population-based and 3 disease cohorts

BiomarCaRE consortium; Rothenbacher, Dietrich; Rehm, Martin; Iacoviello, Licia; Costanzo, Simona; Tunstall-Pedoe, Hugh

*Published in:*  
BMC Medicine

*DOI:*  
[10.1186/s12916-020-01776-7](https://doi.org/10.1186/s12916-020-01776-7)

*Publication date:*  
2020

*Document Version*  
Publisher's PDF, also known as Version of record

[Link to publication in Discovery Research Portal](#)

#### *Citation for published version (APA):*

BiomarCaRE consortium, Rothenbacher, D., Rehm, M., Iacoviello, L., Costanzo, S., Tunstall-Pedoe, H., Belch, J. J. F., Söderberg, S., Hultdin, J., Salomaa, V., Jousilahti, P., Linneberg, A., Sans, S., Padró, T., Thorand, B., Meisinger, C., Kee, F., McKnight, A. J., Palosaari, T., ... Koenig, W. (2020). Contribution of cystatin C- and creatinine-based definitions of chronic kidney disease to cardiovascular risk assessment in 20 population-based and 3 disease cohorts: the BiomarCaRE project. *BMC Medicine*, 18, [300]. <https://doi.org/10.1186/s12916-020-01776-7>

#### **General rights**

Copyright and moral rights for the publications made accessible in Discovery Research Portal are retained by the authors and/or other copyright owners and it is a condition of accessing publications that users recognise and abide by the legal requirements associated with these rights.

- Users may download and print one copy of any publication from Discovery Research Portal for the purpose of private study or research.
- You may not further distribute the material or use it for any profit-making activity or commercial gain.
- You may freely distribute the URL identifying the publication in the public portal.

#### **Take down policy**

If you believe that this document breaches copyright please contact us providing details, and we will remove access to the work immediately and investigate your claim.

RESEARCH ARTICLE

Open Access



# Contribution of cystatin C- and creatinine-based definitions of chronic kidney disease to cardiovascular risk assessment in 20 population-based and 3 disease cohorts: the BiomarCaRE project

Dietrich Rothenbacher<sup>1,2\*,†</sup>, Martin Rehm<sup>1†</sup>, Licia Iacoviello<sup>3,4</sup>, Simona Costanzo<sup>3</sup>, Hugh Tunstall-Pedoe<sup>5</sup>, Jill J. F. Belch<sup>6</sup>, Stefan Söderberg<sup>7</sup>, Johan Hultdin<sup>8</sup>, Veikko Salomaa<sup>9</sup>, Pekka Jousilahti<sup>9</sup>, Allan Linneberg<sup>10</sup>, Susana Sans<sup>11</sup>, Teresa Padró<sup>12</sup>, Barbara Thorand<sup>13</sup>, Christa Meisinger<sup>14,15</sup>, Frank Kee<sup>16</sup>, Amy Jayne McKnight<sup>17</sup>, Tarja Palosaari<sup>9</sup>, Kari Kuulasmaa<sup>9</sup>, Christoph Waldeyer<sup>18</sup>, Tanja Zeller<sup>18,19</sup>, Stefan Blankenberg<sup>18,19</sup>, Wolfgang Koenig<sup>1,20,21</sup> and on behalf of the BiomarCaRE consortium

## Abstract

**Background:** Chronic kidney disease has emerged as a strong cardiovascular risk factor, and in many current guidelines, it is already considered as a coronary heart disease (CHD) equivalent. Routinely, creatinine has been used as the main marker of renal function, but recently, cystatin C emerged as a more promising marker. The aim of this study was to assess the comparative cardiovascular and mortality risk of chronic kidney disease (CKD) using cystatin C-based and creatinine-based equations of the estimated glomerular filtration rate (eGFR) in participants of population-based and disease cohorts.

**Methods:** The present study has been conducted within the BiomarCaRE project, with harmonized data from 20 population-based cohorts ( $n = 76,954$ ) from 6 European countries and 3 cardiovascular disease (CVD) cohorts ( $n = 4982$ ) from Germany. Cox proportional hazards models were used to assess hazard ratios (HRs) for the various CKD definitions with adverse outcomes and mortality after adjustment for the Systematic COronary Risk Evaluation (SCORE) variables and study center. Main outcome measures were cardiovascular diseases, cardiovascular death, and all-cause mortality.

(Continued on next page)

\* Correspondence: [dietrich.rothenbacher@uni-ulm.de](mailto:dietrich.rothenbacher@uni-ulm.de)

<sup>†</sup>Dietrich Rothenbacher and Martin Rehm contributed equally to this work.

<sup>1</sup>Institute of Epidemiology and Medical Biometry, Ulm University, Helmholtzstr. 22, 89081 Ulm, Germany

<sup>2</sup>Division of Clinical Epidemiology and Aging Research C070, German Cancer Research Center (DKFZ), Heidelberg, Germany

Full list of author information is available at the end of the article



© The Author(s). 2020 **Open Access** This article is licensed under a Creative Commons Attribution 4.0 International License, which permits use, sharing, adaptation, distribution and reproduction in any medium or format, as long as you give appropriate credit to the original author(s) and the source, provide a link to the Creative Commons licence, and indicate if changes were made. The images or other third party material in this article are included in the article's Creative Commons licence, unless indicated otherwise in a credit line to the material. If material is not included in the article's Creative Commons licence and your intended use is not permitted by statutory regulation or exceeds the permitted use, you will need to obtain permission directly from the copyright holder. To view a copy of this licence, visit <http://creativecommons.org/licenses/by/4.0/>. The Creative Commons Public Domain Dedication waiver (<http://creativecommons.org/publicdomain/zero/1.0/>) applies to the data made available in this article, unless otherwise stated in a credit line to the data.

(Continued from previous page)

**Results:** The overall prevalence of CKD stage 3–5 by creatinine- and cystatin C-based eGFR, respectively, was 3.3% and 7.4% in the population-based cohorts and 13.9% and 14.4% in the disease cohorts. CKD was an important independent risk factor for subsequent CVD events and mortality. For example, in the population-based cohorts, the HR for CVD mortality was 1.72 (95% CI 1.53 to 1.92) with creatinine-based CKD and it was 2.14 (95% CI 1.90 to 2.40) based on cystatin-based CKD compared to participants without CKD. In general, the HRs were higher for cystatin C-based CKD compared to creatinine-based CKD, for all three outcomes and risk increased clearly below the conventional threshold for CKD, also in older adults. Net reclassification indices were larger for a cystatin-C based CKD definition. Differences in HRs (between the two CKD measures) in the disease cohorts were less pronounced than in the population-based cohorts.

**Conclusion:** CKD is an important risk factor for subsequent CVD events and total mortality. However, point estimates of creatinine- and cystatin C-based CKD differed considerably between low- and high-risk populations. Especially in low-risk settings, the use of cystatin C-based CKD may result in more accurate risk estimates and have better prognostic value.

**Keywords:** Cohort study, Chronic kidney disease, Estimated glomerular filtration rate, Adverse outcome, Creatinine, Cystatin C

## Background

Chronic kidney disease (CKD) represents a global public health problem and affects a large proportion of the adult population worldwide [1, 2]. CKD has a complicated relationship with diabetes and hypertension and other associated diseases, and it is an independent risk factor for cardiovascular diseases (CVDs) as well as for all-cause mortality [1]. Outcomes of CKD include not only progression to end-stage renal disease (ESRD) but also complications such as hypertension, malnutrition, anemia, bone disease, and a decreased quality of life [3, 4].

Also, subclinical CKD has been associated with a large burden of disease and mortality [5]. This finding is clinically important because early detection and treatment of CKD can prevent or delay the progression of CKD and its adverse health outcomes [6]. Meanwhile, it has been demonstrated that the addition of a cystatin C-based equation improves overall risk classification for death, cardiovascular disease, and end-stage renal disease [7]. However, different equations, based on creatinine or cystatin C measurements, for estimating CKD seem to have different performance characteristics in high-risk and low-risk populations and subgroups such as older adults or patients with diabetes [8, 9]. An analysis of the clinical value in specific populations (e.g., for risk prediction) such as high-risk and low-risk CVD populations, older adults, or patients with diabetes would further help to assess the performance of the various estimated glomerular filtration rate (eGFR) estimation equations.

The aim of the study was to assess the prevalence of CKD using creatinine (Cr)- and cystatin C (cysC)-based eGFR equations and their comparative risks for cardiovascular and mortality in participants of cohorts of the MORGAM/BiomarCaRE consortium representing the general population and cohorts with manifest CVD. We

also compared the strength of the associations and prognostic values between population-based general and disease cohorts and in specific subgroups (e.g., older adults, sex, participants with hypertension and diabetes).

## Methods

### Study populations and study design

The present study has been conducted within the MORGAM/BiomarCaRE projects, described in detail previously [10, 11], with harmonized data from 20 population-based cohorts from 7 European countries and 3 CVD cohorts from Germany. The harmonized data variables included baseline information on sex, age, smoking status, hypertension (defined as systolic blood pressure > 140 mmHg or anti-hypertensive medication), and diabetes (defined as self-report or antidiabetic medication). In addition, total cholesterol, C-reactive protein (CRP), N-terminal pro-B-type natriuretic peptide (Nt-proBNP), and troponin I were included, as well as study outcome information (details below). Details of the studies are included in Additional file 1, Table S1–S3, Box S1 [12–28] and also can be found elsewhere [10, 11, 29].

### Laboratory measurements

In the population-based cohorts of the MORGAM/BiomarCaRE study, creatinine was measured with the kinetic alkaline picrate Jaffe method with the isotope dilution mass spectrometry (IDMS) traceable (NIST SRM 967) Abbott Architect Assay CREATININE on the Architect c8000. Cystatin C was measured with the immunoassay cystatin C on an Abbott Diagnostics ARCH ITECT. All analyses were done at the BiomarCaRE central laboratory at Mainz and after the move in the Medical University Center Hamburg-Eppendorf in Hamburg. The intra- and inter-assay coefficients of

variation (CVs) were measured using samples of medium concentrations (creatinine: medium = 1.39–2.44 mg/dL, high = 2.25–7.3 mg/dL; cystatin C: high = 2.95–4.77 mg/L). The intra-assay CVs for creatinine ranged from 0.09 to 5.2% and for cystatin C from 0.78 to 4.0%, respectively. The inter-assay CV for creatinine ranged from 2.3 to 8.1% and for cystatin C from 1.8 to 12.5% for the measurements in the population-based cohorts. In the disease cohorts, creatinine was measured locally immediately by standardized routine methods in the respective laboratories of the participating centers.

In addition, total cholesterol was measured locally by routine methods and subject to a central quality control in the general population cohorts (details under <https://www.thl.fi/publications/monica/tchol/tcholqa.htm>). C-reactive protein was measured on an Abbott Architect c8000 system and the CRP Vario immunoassay (intra-assay CV 0.87–3.79%, inter-assay CV 2.57–4.71%, using samples of low concentration (2.8–4.2 mg/L)). N-terminal pro-B-type natriuretic peptide (NT-proBNP) levels were measured on an ELECSYS 2010 or a Cobas e411 using an electrochemiluminescence immunoassay (ECLIA, Roche Diagnostics) (intra-assay CV 1.48–7.04%, inter-assay CV 4.74–9.18% using samples of low concentration (115.6–166.4 pg/mL)).

#### Assessment of chronic kidney disease

Kidney function was assessed by means of eGFR based on the latest equations from the Chronic Kidney Disease Epidemiology Collaboration (CKD-EPI), and included creatinine and cystatin C [7].

*eGFR<sub>crea</sub> according to the Chronic Kidney Disease Epidemiology Collaboration (CKD-EPI<sub>crea</sub>) equation* [30]:  $eGFR = 141 \times \min(Cr/k, 1)^a \times \max(Cr/k, 1)^{-1.209} \times (0.993)^{\text{age}} \times (1.018 \text{ if female}) \times (1.159 \text{ if black})$  where  $k$  is 0.7 for females and 0.9 for males,  $a$  is  $-0.329$  for females and  $-0.411$  for males, min indicates the minimum of  $Cr/k$  or 1, and max indicates the maximum of  $Cr/k$  or 1.

*Cystatin C-based eGFR according to CKD-EPI collaboration* [31]:  $eGFR(CKD-EPI_{cysC}) = 127.7 \times (cysC)^{-1.17} \times \text{age}^{-0.13} \times (0.91 \text{ if female}) \times (1.06 \text{ if black})$ .

CKD stage 3–5 was defined as eGFR of less than 60 mL/min/1.73 m<sup>2</sup>. In equations, Cr is given in mg/dL, cysC in mg/L, age in years, weight in kg, and eGFR in mL/min/1.73 m<sup>2</sup>. Only participants with measurements of creatinine and cystatin C were included in the final statistical analysis.

#### Outcome definitions

The following outcomes were included in the analysis: (1) cardiovascular mortality (fatal myocardial infarction, fatal stroke, cardiac death, unclassified death) and (2) cardiovascular disease which was defined in the population-based studies as the first fatal or non-fatal coronary heart disease event or cerebral infarction. The

coronary event included acute definite or possible myocardial infarction or coronary death, unstable angina pectoris, cardiac revascularization, or unclassifiable death. Definition of CVD disease outcomes was based on data harmonized in the MORGAM project. For population-based cohorts, participants with prevalent CVD at baseline were excluded from this outcome analysis (note that these participants are still included in the supplementary tables). For the disease cohorts, subsequent CVD was defined as CVD as the main cause of death and non-fatal stroke or myocardial infarction. (3) Total mortality as an endpoint was defined as death due to any cause during the follow-up time. More details of the event classification are provided elsewhere [11, 32] and in the MORGAM manual [29]. The follow-up started at the date of baseline examinations. Duration of follow-up in each cohort is described in Additional file 1, Table S1.

#### Statistical analysis

The study populations were described with respect to baseline sociodemographic and medical characteristics. The prevalence of CKD was calculated and displayed across specific age categories. Cox proportional hazards models were used to assess hazard ratios (HRs) for the various CKD definitions with adverse cardiovascular outcomes and mortality after adjustment for the SCORE variables (age, sex, smoking status, systolic blood pressure, total cholesterol) [33, 34] and also study cohort. The proportional hazards assumption was checked graphically and based on the multivariable model. Besides overall results, analyses were also done according to age (< 65, ≥ 65 years), sex, history of hypertension, and diabetes at baseline. In addition, the area under the curve (AUC) with 95% CI and the net reclassification improvement (NRI) [35] for events and non-events by adding creatinine-based and cystatin C-based CKD to the ESC score variables' adjusted model were calculated according to the risk strata of < 1%, 1 to < 5%, 5 to < 10, and ≥ 10% of estimated 10-year risk for the various events. Finally, we used a restricted cubic spline regression with 3 degrees of freedom for multivariate analysis within the context of the Cox proportional hazards models. SAS version 9.4 (SAS Institute Inc., Cary, NC) and R version 3.5.1 (R Foundation for Statistical Computing) were used for all analyses. We used our own routines in SAS and R as well as the R package "rms" for spline regression modeling. We ran most of the analytical steps in both programs, underpinned by the 4-eye principle, to assure the quality of the results.

#### Results

A total of 20 population-based cohorts with 75,367 participants (median age 50 years, 50.9% men, 4.4%

diabetes) and with an average follow-up between 2.82 and 23.47 years were included in the study. In addition, three disease cohorts with 4982 patients with manifest CVD (median age 63 years, 75.6% men, 18.7% diabetic) and an average follow-up time between 0.47 and 9.37 years, respectively, were available within the MORGAM/BiomarCaRE consortium for this analysis (for details, see Table 1). Further details of the included cohorts, their main baseline characteristics, and details of renal function are displayed in Additional file 1, Tables S1-S3. In the population-based cohorts, the incidence of cardiovascular disease (non-fatal and fatal CVD events combined), cardiovascular mortality, and total mortality, respectively, was 8.2, 4.2, and 10.9 per 1000 person years, whereas it was 21.2, 6.9, and 17.9 in the diseased cohorts, respectively (Table 1).

The distribution of the eGFR as calculated with measurements of creatinine and cystatin C is shown in Additional file 1, Fig. S1 for the population-based cohorts in total (panel A) and also stratified according to age (Fig. S1 panels B and C) and in Additional file 1, Fig. S2 for the disease cohorts, also in total and stratified

according to age. Notably, especially in the population-based cohorts, the distribution in the older population (Fig. S1 panel C) is quite different between the two eGFR formulas.

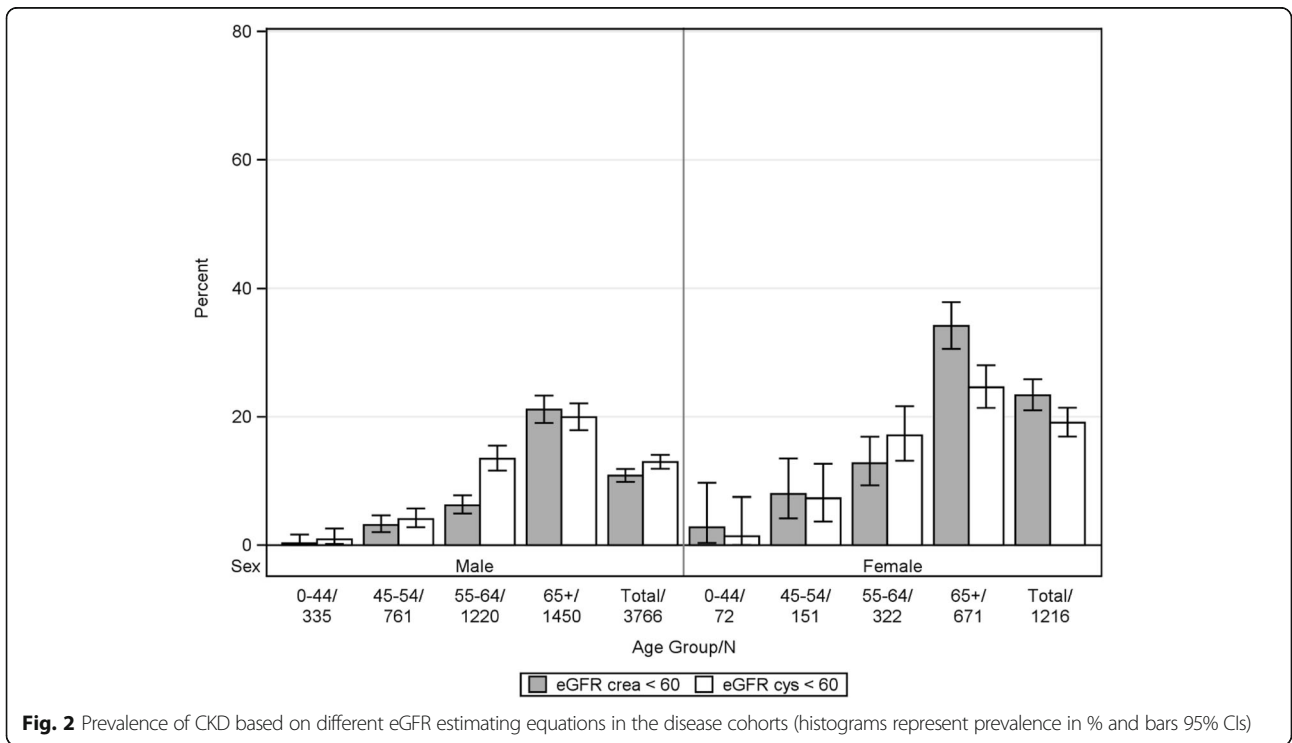
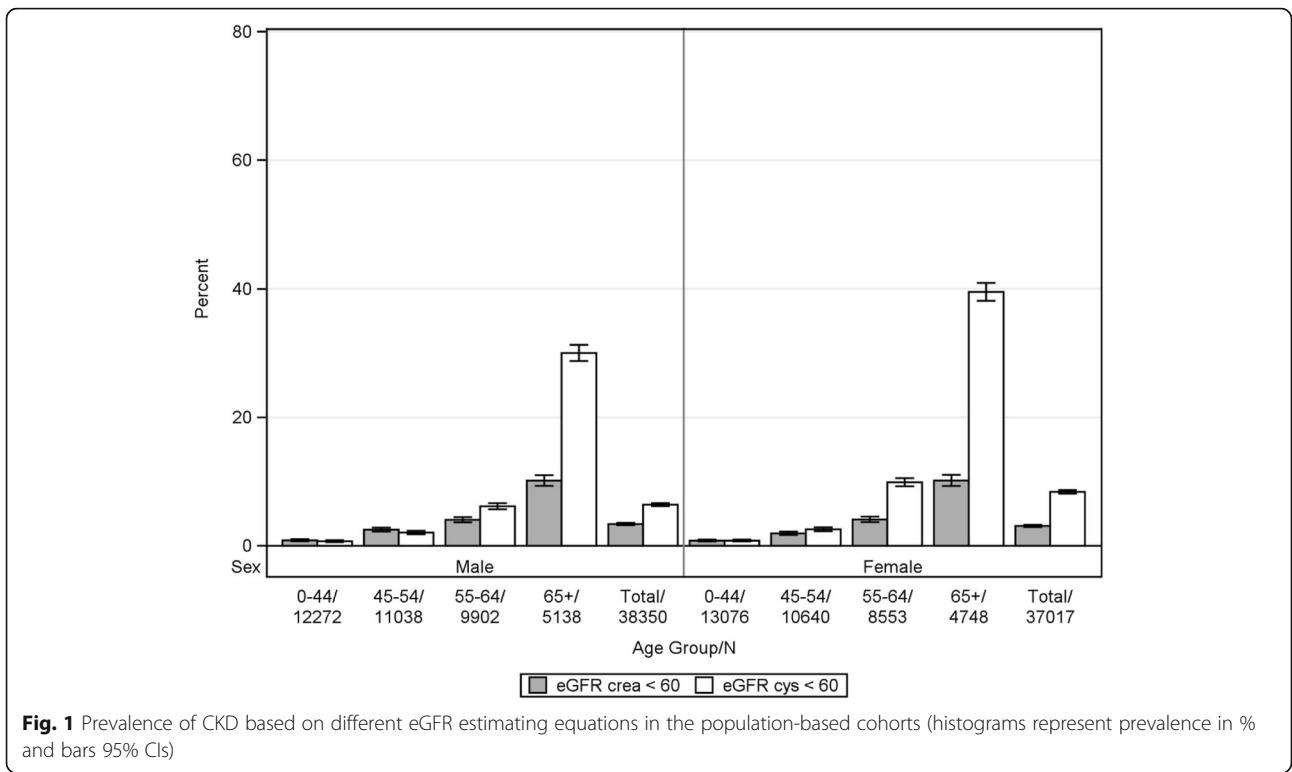
The overall prevalence of CKD stage 3–5 by CKD-EPI<sub>crea</sub> and CKD-EPI<sub>cys</sub> eGFR, respectively, was 3.3% and 7.4% in the population-based cohorts and 13.9% and 14.4% in the disease cohorts. In males and females, the prevalence of CKD showed a steep increase with age. In the population-based cohorts, prevalence was higher based on CKD-EPI<sub>cysC</sub> (Fig. 1), whereas patterns were different based on CKD-EPI in the disease cohorts (Fig. 2).

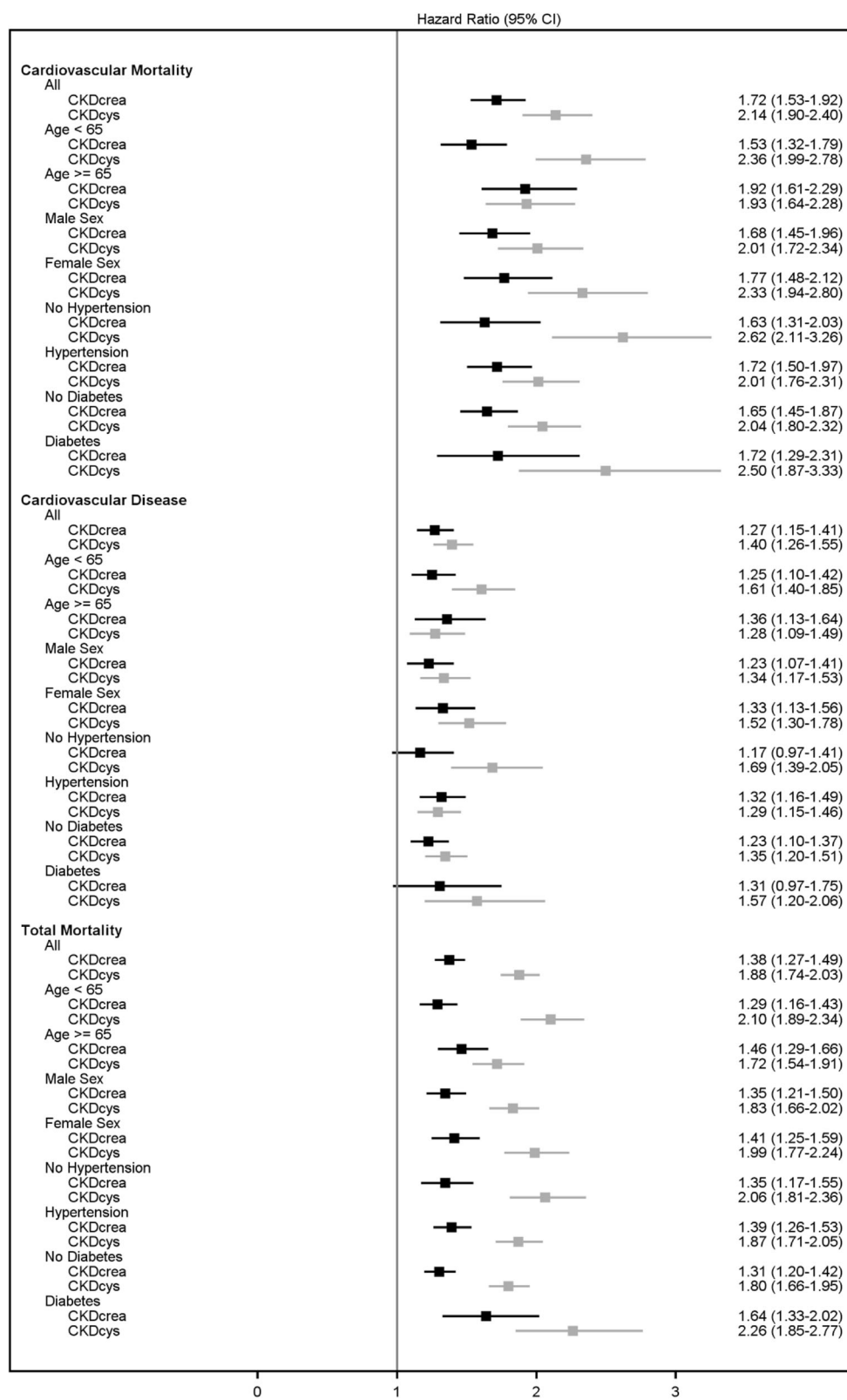
Figure 3 shows the association (HR and 95% CI) of both CKD-EPI equations with CVD mortality, fatal and non-fatal CVD events, and total mortality after adjustment for the ESC score variables for the population-based cohorts in total, and stratified according to age (cut point 65 years), sex, and hypertension and diabetes. The area under the curve (AUC) and net reclassification index (NRI) for events and non-events are also provided (details in Additional file 1, Tables S4 for population-

**Table 1** Baseline characteristics of the study populations

	Population-based cohorts	Disease cohorts
Number of cohorts, <i>n</i>	20	3
Number of subjects, <i>n</i>	75,367	4982
Men, <i>n</i> (%)	38,350 (50.9%)	3766 (75.6%)
Age at baseline, years		
Median (Q1, Q3)	50.0 (41.0, 59.0)	63.0 (54.0, 69.0)
Proportion ≥ 65 years	13.1%	42.6%
Daily smokers, <i>n</i> (%)	24,077 (31.9%)	892 (17.9%)
Diabetes, <i>n</i> (%)	3286 (4.4%)	930 (18.7%)
Hypertension, <i>n</i> (%)	30,811 (40.9%)	3514 (70.5%)
Body mass index (kg/m <sup>2</sup> ), mean (SD)	26.9 (4.6)	27.6 (4.1)
Total cholesterol (mmol/L)*	5.7 (5.0, 6.5)	4.9 (4.1, 5.7)
CRP (mg/L)*	1.3 (0.6, 2.9)	1.5 (0.4, 5.1)
Nt-proBNP (pg/mL)*	45.9 (24.2, 86.3)	308.0 (116.0, 803.0)
Troponin I (ng/L)*	2.3 (1.4, 3.7)	10.4 (4.6, 29.7)
eGFR (mL/min/1.73m <sup>2</sup> )*		
CKD-EPI <sub>crea</sub>	97.6 (85.9, 107.6)	82.7 (68.7, 94.6)
CKD-EPI <sub>cysC</sub>	92.5 (76.4, 111.5)	91.1 (69.1, 116.2)
CKD stage 3+, <i>n</i> (%)		
CKD-EPI <sub>crea</sub>	2450 (3.3%)	691 (13.9%)
CKD-EPI <sub>cysC</sub>	5562 (7.4%)	719 (14.4%)
Endpoints ( <i>n</i> , incidence rate per 1000 person years (95% CI))		
Cardiovascular disease	6850, 8.2 (95% CI 8.0–8.4)	371, 21.2 (95% CI 19.2–23.5)
Cardiovascular mortality	3796, 4.2 (95% CI 4.1–4.3)	132, 6.9 (95% CI 5.8–8.2)
Total mortality	9840, 10.9 (95% CI 10.6–11.1)	343, 17.9 (95% CI 16.1–19.9)

\*Median (interquartile range, Q1, Q3)





**Fig. 3** Association of CKD with various endpoints in population-based cohorts (squares represent HR and 95% CIs)

based cohorts). For example, the HR for CVD mortality was 1.72 (95% CI 1.53 to 1.92) with CKD-EPI<sub>crea</sub> and it was 2.14 (95% CI 1.90 to 2.40) based on CKD-EPI<sub>cysC</sub> after adjustment for covariates. In general, the HRs were higher for cystatin C-based eGFR compared to creatinine-based eGFR for all three outcomes, especially evident for total mortality. Mainly, the NRI<sub>ne</sub> was always larger for CKD-EPI<sub>cysC</sub> for all three outcomes. It was notably high for the age strata  $\geq 65$  years for cardiovascular mortality and total mortality (4.2% and 6.5%, respectively) and highest for the stratum diabetes for total mortality (NRI<sub>ne</sub> 9.4%).

Figure 4 shows the association of CKD with the various outcomes in the diseased cohorts (details in Additional file 1, Table S5 for disease cohorts). For example, the HR for CVD mortality was 3.33 (95% CI 2.14 to 5.19) with CKD-EPI<sub>crea</sub> and 3.20 (95% CI 2.04 to 5.01) based on CKD-EPI<sub>cysC</sub> after adjustment for covariates. Especially for mortality, HRs were more often higher for CKD-EPI<sub>crea</sub>. For both CKD variables in disease cohorts, NRI<sub>ne</sub> was highest in the strata female sex, but the patterns were less clear than those in the population-based cohorts.

Details of reclassification in both types of cohorts are shown in Additional file 1, Table S6. In the population-based cohorts, a large proportion (47.4%) of the CKD-crea-defined cases were re-graded by the CKD-cysC-defined CKD to no CKD. The pattern, in general, was similar to the diseased cohorts, although the much lower numbers of the disease cohorts have to be considered.

Figure 5 shows adjusted HR for creatinine-based eGFR (left side) and for cystatin C-based eGFR (right side) for total mortality in the population-based cohorts overall (panel A) and after stratification for age (panel B age up to 64 years, panel C age 65+ years). Although the increase of the HR with decreasing eGFR is steeper with the cystatin C-based eGFR, this difference is mainly driven by the trend in the population up to 65 years. Furthermore, a clear increase of the HRs is evident below 60 mL/min/1.73m<sup>2</sup>, even in the age strata 65+ years, pointing to the validity of the current threshold for CKD stage 3+. Additional file 1, Fig. S7 shows the results for mortality in the disease cohorts showing similar patterns for creatinine- and cystatin C-based eGFR. Additional file 1, Fig. S8 shows the AUC for cystatin C- and creatinine-based eGFR with consistently higher AUC values for the cystatin C-based eGFR definition in both cohorts in all strata.

## Discussion

This large cohort study conducted within the framework of the MORGAM/BiomarCaRE consortium clearly demonstrated that CKD is an important risk factor for subsequent CVD events and total mortality, both in low- as

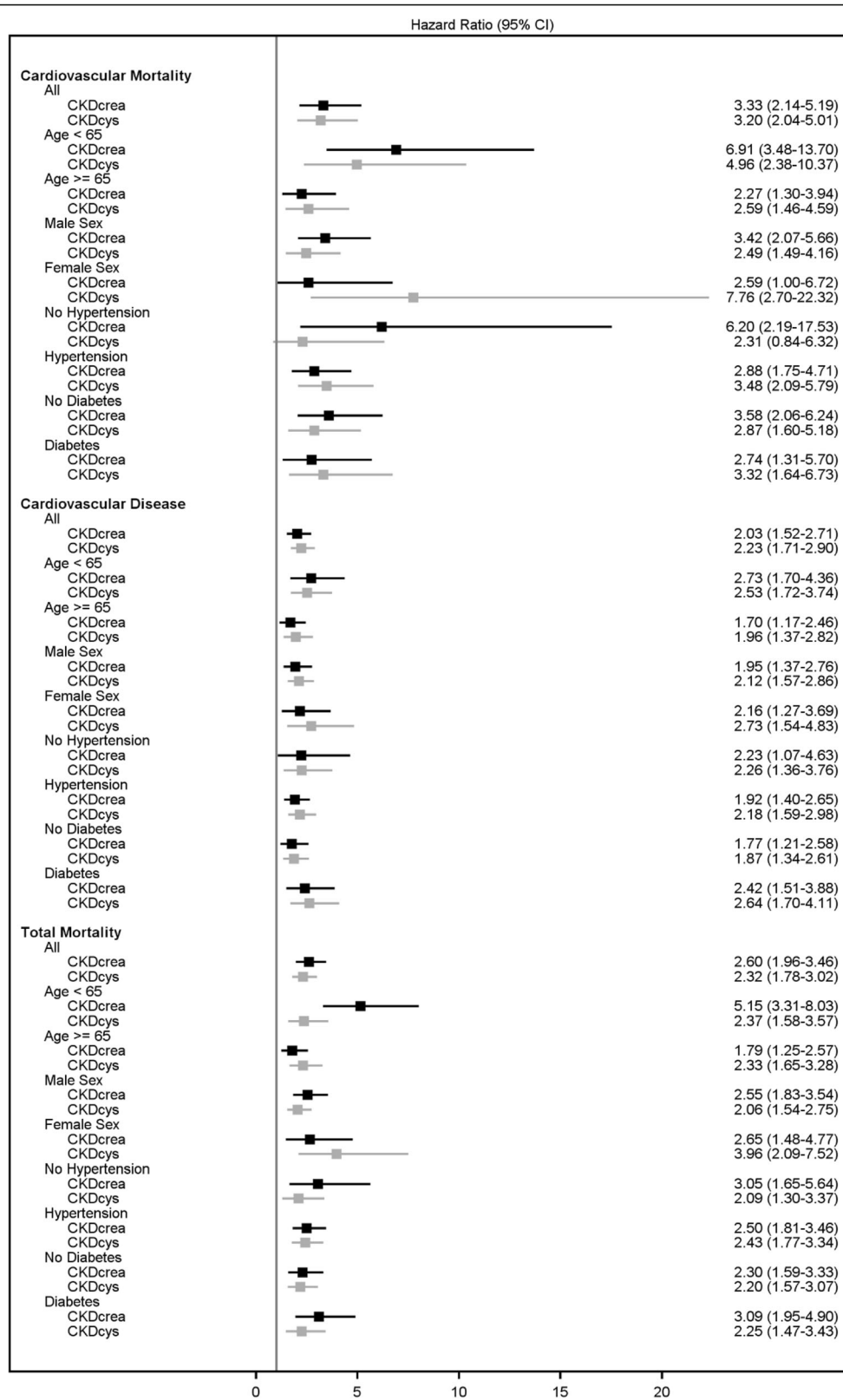
well as high-risk populations. However, especially in the (low-risk) population-based cohorts, it was evident that analysis of the creatinine- and cystatin C-based eGFRs and their consequences differed considerably. Cystatin C-defined CKD showed a higher prevalence especially in older adults, and cystatin C-based eGFR was associated with higher CVD risk estimates. It seemed also to be associated with better risk classification, especially evident for mortality in older adults. Notably, this difference was not obvious in the relatively older, high-risk disease cohorts. Furthermore, we found evidence that the conventional threshold of CKD (60 mL/min/1.73m<sup>2</sup>) seems valid also for participants aged 65 years and older, although the increase in the estimated risk was less steep compared to the younger participants. Notably, higher eGFR-creatinine ( $\geq 90$  mL/min/1.73 m<sup>2</sup>) was associated with higher hazard ratio of adverse events, while higher eGFR-cysC was not. Compared to a creatinine-based definition of CKD, the cystatin C-based definition of CKD seemed to have a higher specificity, a measure especially important in populations with low prevalence of CKD and therefore resulted in many fewer false positives.

## Prevalence of CKD and differences of eGFRs

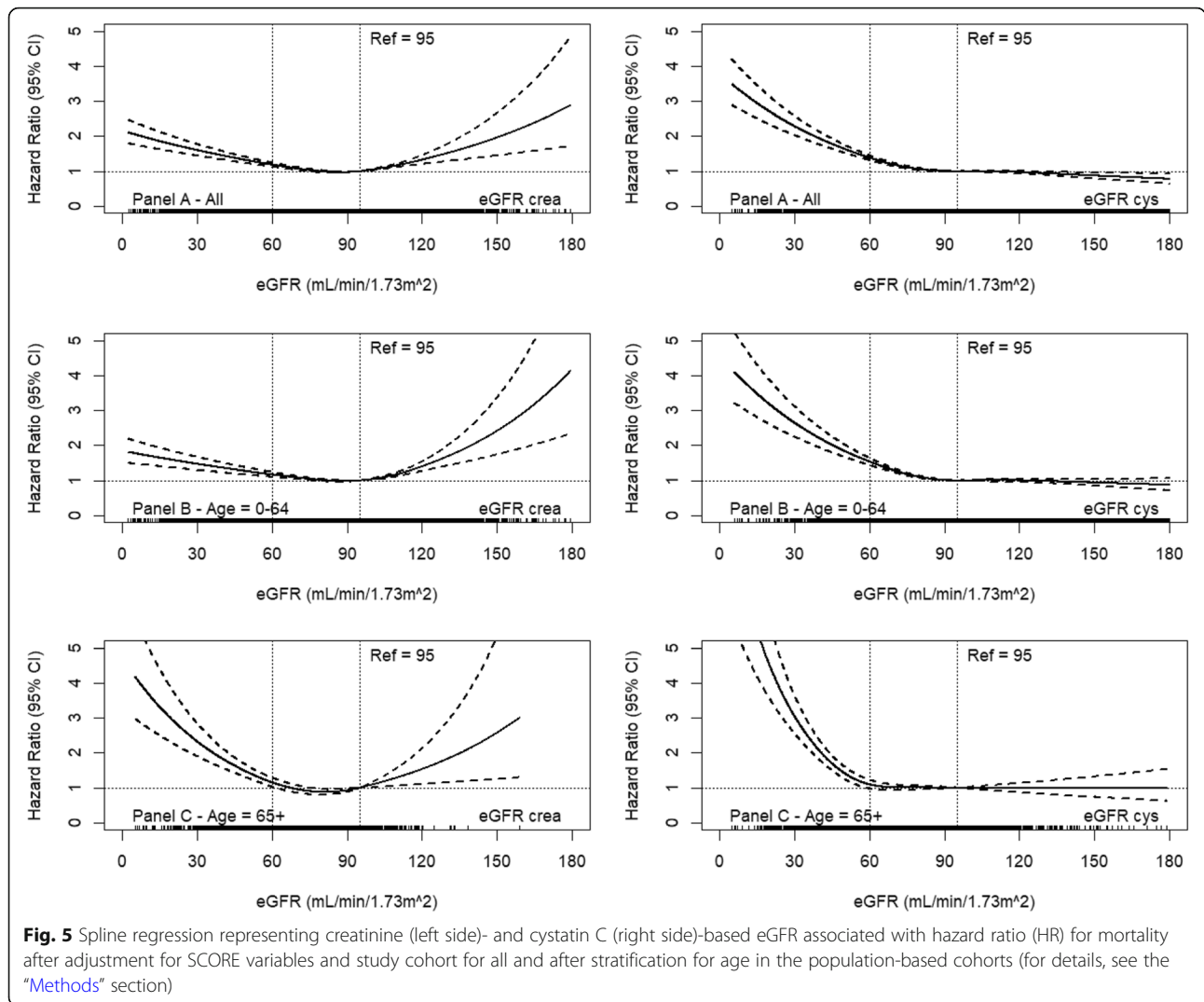
Based on a recent review, the prevalence of CKD stage 3–5 varied considerably in studies from 19 general populations from 13 European countries and was between 1.0 and 5.9% in the adult population. Many factors including measurement issues certainly contribute to this variation besides differences in comorbidity [36]. These numbers are in line with our estimates in the population-based cohorts. Estimates of cystatin C CKD were in general slightly higher, but striking differences occurred especially in the older adults. In the population-based cohorts, cystatin C-based CKD prevalence was much higher in older adults, whereas in the diseased cohorts CKD-EPI<sub>crea</sub> resulted in a higher CKD prevalence in participants aged 65 years or older, especially in females.

Cystatin C is more sensitive than creatinine especially in the detection of early kidney dysfunction among various patient groups such as diabetes, in sarcopenia, and also in the older adults. Potential confounders for creatinine-based eGFR are muscle mass, dehydration, dietary factors, and other comorbid diseases. As suggested in other studies that have included older adults, the creatinine-based definition of CKD in high-risk groups may result in a higher prevalence estimate because of the association of creatinine levels with many comorbid conditions such as muscle mass, frailty, or diabetes [37, 38]. Cystatin C-based eGFR is less influenced by age or ethnicity, but other factors such as obesity, inflammation, and smoking as well as intake of glucocorticoids may affect serum values.





**Fig. 4** Association of CKD with various endpoints in disease cohorts (squares represent HR and 95% CIs)



**Differences in risk estimation for various outcomes**

Our results show that in middle-aged low-risk populations, cystatin C-based CKD classification had a stronger association with risk of CVD morbidity and especially mortality, as seen in other studies [7, 39, 40]. CKD should be considered as an equally relevant risk factor for mortality and end-stage renal disease for patients with, as well as those without, hypertension. Notably, associations were even stronger in patients without hypertension [41]. For patients with diabetes, the relative risks were much the same as for non-diabetic persons, pointing to the importance of CKD for adverse outcomes [34]. As suggested in other studies, in patients with diabetes, the use of a cystatin C-based CKD definition offered better clinical utility for risk prediction than creatinine-based equations [8]. In addition, a systematic review including 23 studies came to the conclusion that cystatin C-based eGFR represents measured GFR well in patients with diabetes [9]. The observation in our spline

plots that higher creatinine-based eGFR again showed an adverse association with the outcomes has been shown previously [7, 42]. It probably reflects the associations with comorbid conditions such as lower muscle mass, frailty, or diabetes and implies that creatinine-based eGFR, especially in elderly, has severe limitations, particularly when it exceeds 100 mL/min/1.73m<sup>2</sup> [43]. Thus, it should be investigated further as it was also very obvious in subjects aged 64 or younger in our analysis.

Furthermore, especially in younger and low-risk populations, the cystatin C-based eGFR may deliver more valid results [7] compared to creatinine-based eGFR, an observation in line with our data. In high-risk populations or older adults, this may be different [44]. However, evidence from studies including older adults is so far inconsistent. A study including 1639 British men aged 71 to 92 years [45], a study including 1741 participants with CKD and a mean age of 73 years [44], and a study conducted in older adult

women (mean age 75.2 years) [46] showed no benefit from using cystatin C-based eGFR equations when compared to creatinine-based ones. However, the large study of Shlipak and colleagues, including 11 cohorts of the general population (with a mean age of 60 years) and 5 cohorts with CKD (mean age 55 years), found that cystatin C-based eGFR could better categorize risk than creatinine-based eGFR, especially around the threshold of 60 mL/min/1.73m<sup>2</sup> [7], in line with recommendations of KDIGO [5]. However, the younger age in that study has to be considered.

### Implications

All methods to estimate GFR are associated with systematic and random error; however, on a positive note, they have less time-to-time variability than measured GFR [47]. Furthermore, it is important to consider the underlying risk profile of the population on the impact of the relative risk estimates. Especially in low-risk settings, cystatin C-based eGFR seems more accurate and delivers fewer false positives. The lower risk estimates associated with CKD in the diseased cohorts probably reflect the higher prevalence of comorbid conditions and the higher baseline risk within this population. As suggested by some authors, both CKD-EPI equations may have similar accuracy but show bias in opposite directions and the combination of both may deliver the best results in older adults [48, 49]. However, currently, measurement of cystatin C is more expensive than creatinine. Therefore, further research should focus on the cost-effectiveness of cystatin C-based measurements of CKD, especially in low-risk settings and older populations with the aim of finding ways to reduce the costs of measurement within routine medical care.

### Strength and limitations

We included a large number of general population-based studies which had been assembled within the MORGAM/BiomarCaRE consortium, used harmonized data, and could rely on centralized measurements for creatinine and cystatin C. However, unfortunately, cystatin C measurements had not been standardized to the global WHO reference material, which however should not affect internal validity of results, but external comparability. We also had cohorts of patients with prevalent CVD available, although the numbers of included participants were much lower compared to the population-based studies and they only came from Germany. Unfortunately, the laboratory measures of the disease cohorts had been measured at each study center. Furthermore, we relied on one single measurement to define CKD, and therefore, some of the participants would not have been classified as having CKD if measured twice and if a time period of 6 months had been applied to define the chronicity of CKD.

Furthermore, we could not include measurements of protein or albumin in urine as they were not available in a standardized manner in all included studies. Proteinuria or albuminuria is indeed an important prognostic factor and used as an indicator for renal damage especially in CKD stages 1 and 2 and explains much of the risk increase within these stages. However, we dichotomized CKD and summarized all stages 3 and above versus the rest, according to the clinically used threshold.

### Conclusions

CKD is an important risk factor for subsequent CVD events and total mortality. However, point estimates of creatinine-based definition and cystatin C-based CKD differed considerably between low- and high-risk populations. Especially in low-risk settings, the use of cystatin C-based eGFR may result in more accurate risk estimates and have better prognostic value compared to creatinine-based CKD definition. Therefore, the clinical utility of both equations in different risk populations and risk groups has to be considered and should be evaluated further.

### Supplementary information

**Supplementary information** accompanies this paper at <https://doi.org/10.1186/s12916-020-01776-7>.

**Additional file 1:** The Additional file 1 contains additional descriptive and analysis results and information about the included studies. **Table S1.** List of included population-based and disease-cohorts. **Table S2.** Main baseline characteristics of population-based and disease-cohorts included. **Table S3.** Renal function at baseline of population-based and disease-cohorts included. **Figure S1.** Distribution of the estimated glomerular filtration rate (eGFR) based on creatinine and cystatin C in the population based cohorts. **Figure S2.** Distribution of the estimated glomerular filtration rate (eGFR) based on creatinine and cystatin C in the disease cohorts. **Table S4.** Association of CKD with various endpoints (HR and 95% CI) including area-under the curve (AUC with 95% CI) and net-reclassification index (NRI with 95% CI) in population-based cohorts. **Table S5.** Association of CKD with various endpoints (HR and 95% CI) including area-under the curve (AUC with 95% CI) and net-reclassification index (NRI with 95% CI) in disease cohorts. **Table S6.** Agreement of reclassification by the CKD-EPlcysC based definition compared to CKD-EPlcrea based definition in the population-based cohorts (Panel A) and in the disease cohorts (Panel B). **Figure S7.** Spline regression representing creatinine (left side) and cystatin C (right side) based eGFR associated with hazard ratio's (HR) for mortality after adjustment for SCORE-variables and study center for all and after stratification for age in the disease cohorts. **Box S1.** Further Description of Study Cohorts.

### Abbreviations

AUC: Area under the ROC curve; BMI: Body mass index; CHD: Coronary heart disease; CI: Confidence interval; Cr: Creatinine; cysC: Cystatin C; CKD: Chronic kidney disease; CKD-EPI: Chronic Kidney Disease Epidemiology Collaboration; CV: Coefficient of variation; CVD: Cardiovascular disease; eGFR: Estimated glomerular filtration rate; ESRD: End-stage renal disease; hs-cTnT: High-sensitivity cardiac troponin T; hs-cTnI: High-sensitivity cardiac troponin I; hs-CRP: High-sensitivity C-reactive protein; HR: Hazard ratio; NT-proBNP: N-terminal pro-B-type natriuretic peptide; NRI: Net reclassification improvement; ROC: Receiver-operating characteristic

**Acknowledgements**

Not applicable

**Authors' contributions**

All authors were involved in the design of the study. DR, MR, and WK did the statistical analysis and wrote the first draft. All authors contributed to the further drafts. The corresponding author attests that all listed authors meet the authorship criteria. DR is the guarantor. All authors read and approved the final manuscript.

**Funding**

This work was supported by Seventh Framework Programme collaborative project [grant agreement no. HEALTH-F2-2011-278913]. The MORGAM project has been funded through several grants from the EU, the latest ones being from the Seventh Framework Programme (FP7/2007-2013) under grant agreement no. HEALTH-F2-2011-278913, BiomarCaRE, FP7/2007-2013 [HEALTH-F4-2007-201413, ENGAGE and HEALTH-F3-2010-242244, CHANCES], and the Medical Research Council London [G0601463, No 80983: Serum Biomarkers in the MORGAM Populations]. This has supported central coordination, workshops, and part of the activities of the MORGAM Data Centre, at THL in Helsinki, Finland, and the MORGAM Biomarker Laboratory at Johannes Gutenberg University in Mainz, Germany. MORGAM Participating Centres are funded by regional and national governments, research councils, charities, and other local sources. Dr. Zeller was supported by the German Center of Cardiovascular Research (DZHK e.V.) under the grant number 81Z1710101. Stefan Blankenberg reports grants from Abbott Diagnostics, during the conduct of the study. Open access funding provided by Projekt DEAL.

**Availability of data and materials**

Due to ethical restrictions, the data cannot be made publicly available but may be available upon request. The request should be directed to Prof. Rothenbacher ([dietrich.rothenbacher@uni-ulm.de](mailto:dietrich.rothenbacher@uni-ulm.de)).

**Ethics approval and consent to participate**

All studies were carried out according to the Declaration of Helsinki. Each of the 23 included contributing studies had previously obtained ethics approval from their respective institutional review boards, and all participants provided informed consent. Details of each study can also be found in Additional file 1 Box S1: Further Description of Study Cohorts.

**Consent for publication**

Not applicable

**Competing interests**

All authors have completed the ICMJE uniform disclosure form at [www.icmje.org/coi\\_disclosure.pdf](http://www.icmje.org/coi_disclosure.pdf) and declare the following: no support from any organization for the submitted work, no financial relationships with any organizations that might have an interest in the submitted work in the previous 3 years, and no other relationships or activities that could appear to have influenced the submitted work.

Outside the submitted work, S.B. reports personal fees from Lumira Diagnostics, ThermoFisher, Siemens, Abbott Diagnostics, and Roche Diagnostics and grants from ThermoFisher, Siemens, and Abbott Diagnostics. S.S. reports personal fees from Actelion Ltd.; V.S. reports personal fees from Novo Nordisk and Sanofi and grants from Bayer AG. W.K. reports personal fees from AstraZeneca, Novartis, Pfizer, The Medicines Company, DalCor, Kowa, Amgen, Corvidia, Berlin-Chemie, Sanofi, and Daichii-Sankyo, in addition to grants and non-financial support from Beckmann, Singulex, Abbott, and Roche Diagnostics. D.R., M.R., J.F.B., J.H., P.J., A.L., S.Sa., T.Pad., B.T., C.M., F.K., A.J.M., H.T.P., L.I., S.C., C.W., and T.Pal. declare no conflict of interest.

**Author details**

<sup>1</sup>Institute of Epidemiology and Medical Biometry, Ulm University, Helmholtzstr. 22, 89081 Ulm, Germany. <sup>2</sup>Division of Clinical Epidemiology and Aging Research C070, German Cancer Research Center (DKFZ), Heidelberg, Germany. <sup>3</sup>Department of Epidemiology and Prevention, IRCCS Neuromed, Pozzilli, Italy. <sup>4</sup>Research Center in Epidemiology and Preventive Medicine (EPIMED), Department of Medicine and Surgery, University of Insubria, Varese, Italy. <sup>5</sup>Cardiovascular Epidemiology Unit, Institute of Cardiovascular Research, University of Dundee, Dundee, UK. <sup>6</sup>Vascular

Medicine Unit, Institute of Cardiovascular Disease, University of Dundee, Dundee, UK. <sup>7</sup>Department of Public Health and Clinical Medicine, Umeå University, Umeå, Sweden. <sup>8</sup>Department of Medical Biosciences, Clinical Chemistry, Umeå University, Umeå, Sweden. <sup>9</sup>Finnish Institute for Health and Welfare, Helsinki, Finland. <sup>10</sup>Center for Clinical Research and Prevention, Bispebjerg and Frederiksberg Hospital, The Capital Region, Copenhagen, Denmark. <sup>11</sup>Catalan Department of Health, 08005 Barcelona, Spain. <sup>12</sup>Cardiovascular ICC-C-Program, Research Institute Hospital de la Santa Creu i Sant Pau, IIB-Sant Pau, Barcelona, Spain. <sup>13</sup>Institute of Epidemiology, Helmholtz Zentrum München, German Research Center for Environmental Health, Neuherberg, Germany. <sup>14</sup>Independent Research Group Clinical Epidemiology, Helmholtz Zentrum München, German Research Center for Environmental Health, Neuherberg, Germany. <sup>15</sup>Ludwig-Maximilians-Universität München, Chair of Epidemiology at UNIKA-T Augsburg, Augsburg, Germany. <sup>16</sup>Queen's University of Belfast, UK Clinical Research Collaboration Centre of Excellence for Public Health, Belfast, UK. <sup>17</sup>Centre for Public Health, School of Medicine, Dentistry and Biomedical Sciences, Queen's University of Belfast, Belfast, UK. <sup>18</sup>Clinic for General and Interventional Cardiology, University Heart Center Hamburg, Hamburg, Germany. <sup>19</sup>German Center for Cardiovascular Research (DZHK e.V.), partner site Hamburg, Lübeck, Kiel, Hamburg, Germany. <sup>20</sup>Deutsches Herzzentrum München, Technische Universität München, Munich, Germany. <sup>21</sup>DZHK (German Centre for Cardiovascular Research), partner site Munich Heart Alliance, Munich, Germany.

Received: 11 May 2020 Accepted: 3 September 2020

Published online: 09 November 2020

**References**

- Chronic Kidney Disease Prognosis Consortium, Matsushita K, van der Velde M, Astor BC, Woodward M, Levey AS, de Jong PE, Coresh J, Gansevoort RT. Association of estimated glomerular filtration rate and albuminuria with all-cause and cardiovascular mortality in general population cohorts: a collaborative meta-analysis. *Lancet Lond Engl*. 2010;375:2073–81.
- Zhang Q-L, Rothenbacher D. Prevalence of chronic kidney disease in population-based studies: systematic review. *BMC Public Health*. 2008;8:117.
- Astor BC, Matsushita K, Gansevoort RT, Velde M Van der, Woodward M, Levey AS, Jong PE de, Coresh J, Chronic Kidney Disease Prognosis Consortium. Lower estimated glomerular filtration rate and higher albuminuria are associated with mortality and end-stage renal disease. A collaborative meta-analysis of kidney disease population cohorts. *Kidney Int* 2011;79:1331–1340.
- Nitsch D, Mann AG, Bulpitt C, Roderick PJ, Fletcher A. Impairment of kidney function and reduced quality-of-life in older people: a cross-sectional study. *Age Ageing*. 2011;40:381–7.
- Levey AS, de Jong PE, Coresh J, El Nahas M, Astor BC, Matsushita K, Gansevoort RT, Kasiske BL, Eckardt K-U. The definition, classification, and prognosis of chronic kidney disease: a KDIGO Controversies Conference report. *Kidney Int*. 2011;80:17–28.
- Chen TK, Knicely DH, Grams ME. Chronic kidney disease diagnosis and management: a review. *JAMA*. 2019;322:1294–304.
- Shlipak MG, Matsushita K, Ärnlöv J, Inker LA, Katz R, Polkinghorne KR, Rothenbacher D, Sarnak MJ, Astor BC, Coresh J, Levey AS, Gansevoort RT, Prognosis Consortium CKD. Cystatin C versus creatinine in determining risk based on kidney function. *N Engl J Med*. 2013;369:932–43.
- Schöttker B, Herder C, Müller H, Brenner H, Rothenbacher D. Clinical utility of creatinine- and cystatin C-based definition of renal function for risk prediction of primary cardiovascular events in patients with diabetes. *Diabetes Care*. 2012;35:879–86.
- Cheuiche AV, Queiroz M, Azeredo-da-Silva ALF, Silveiro SP. Performance of cystatin C-based equations for estimation of glomerular filtration rate in diabetes patients: a prisma-compliant systematic review and meta-analysis. *Sci Rep*. 2019;9:1418.
- Zeller T, Hughes M, Tuovinen T, Schillert A, Conrads-Frank A, den Ruijter H, Schnabel RB, Kee F, Salomaa V, Siebert U, Thorand B, Ziegler A, Breek H, Pasterkamp G, Kuulasmaa K, Koenig W, Blankenberg S. BiomarCaRE: rationale and design of the European BiomarCaRE project including 300,000 participants from 13 European countries. *Eur J Epidemiol*. 2014;29:777–90.
- Evans A, Salomaa V, Kulathinal S, Asplund K, Cambien F, Ferrario M, Perola M, Peltonen L, Shields D, Tunstall-Pedoe H, Kuulasmaa K, MORGAM Project.

- MORGAM (an international pooling of cardiovascular cohorts). *Int J Epidemiol.* 2005;34:21–7.
12. Löwel H, Lewis M, Hörmann A, Keil U. Case finding, data quality aspects and comparability of myocardial infarction registers: results of a south German register study. *J Clin Epidemiol.* 1991;44:249–60.
  13. Meisinger C, Strassburger K, Heier M, Thorand B, Baumeister SE, Giani G, Rathmann W. Prevalence of undiagnosed diabetes and impaired glucose regulation in 35–59-year-old individuals in Southern Germany: the KORA F4 Study. *Diabet Med J Br Diabet Assoc.* 2010;27:360–2.
  14. Rodes A, Sans S, Balaña LL, Paluzie G, Aguilera R, Balaguer-Vinro I. Recruitment methods and differences in early, late and non-respondents in the first MONICA-Catalonia population survey. *Rev Epidemiol Sante Publique.* 1990;38:447–53.
  15. Sans S, Paluzie G, Balaña L, Puig T, Balaguer-Vinro I. Trends in prevalence, awareness, treatment and control of arterial hypertension between 1986 and 1996: the MONICA-Catalonia study. *Med Clin (Barc).* 2001;117:246–53.
  16. Sans S, Puigdefábregas A, Paluzie G, Monterde D, Balaguer-Vinro I. Increasing trends of acute myocardial infarction in Spain: the MONICA-Catalonia Study. *Eur Heart J.* 2005;26:505–15.
  17. Santimone I, Di Castelnuovo A, De Curtis A, Spinelli M, Cugino D, Gianfagna F, Zito F, Donati MB, Cerletti C, de Gaetano G, Iacoviello L, Project Investigators MOLI-SANI. White blood cell count, sex and age are major determinants of heterogeneity of platelet indices in an adult general population: results from the MOLI-SANI project. *Haematologica.* 2011;96:1180–8.
  18. Eriksson M, Holmgren L, Janlert U, Jansson J-H, Lundblad D, Stegmayr B, Söderberg S, Eliasson M. Large improvements in major cardiovascular risk factors in the population of northern Sweden: the MONICA study 1986–2009. *J Intern Med.* 2011;269:219–31.
  19. Köster M, Asplund K, Johansson Å, Stegmayr B. Refinement of Swedish administrative registers to monitor stroke events on the national level. *Neuroepidemiology.* 2013;40:240–6.
  20. Rolandsson O, Norberg M, Nyström L, Söderberg S, Svensson M, Lindahl B, Weinehall L. How to diagnose and classify diabetes in primary health care: lessons learned from the Diabetes Register in Northern Sweden (DiabNorth). *Scand J Prim Health Care.* 2012;30:81–7.
  21. Yarnell JW. The PRIME study: classical risk factors do not explain the severalfold differences in risk of coronary heart disease between France and Northern Ireland. Prospective epidemiological study of myocardial infarction. *QJM Mon J Assoc Physicians.* 1998;91:667–76.
  22. Kendrick S, Clarke J. The Scottish record linkage system. *Health Bull (Edinb).* 1993;51:72–9.
  23. Tunstall-Pedoe H, Woodward M, Tavendale R, A'Brook R, McCluskey MK. Comparison of the prediction by 27 different factors of coronary heart disease and death in men and women of the Scottish Heart Health Study: cohort study. *BMJ.* 1997;315:722–9.
  24. Blankenberg S, Rupprecht HJ, Bickel C, Torzewski M, Hafner G, Tiret L, Smieja M, Cambien F, Meyer J, Lackner KJ, Investigators AG. Glutathione peroxidase 1 activity and cardiovascular events in patients with coronary artery disease. *N Engl J Med.* 2003;349:1605–13.
  25. Rothenbacher D, Koenig W, Brenner H. Comparison of N-terminal pro-B-natriuretic peptide, C-reactive protein, and creatinine clearance for prognosis in patients with known coronary heart disease. *Arch Intern Med.* 2006;166:2455–60.
  26. Breittling LP, Salzmann K, Rothenbacher D, Burwinkel B, Brenner H. Smoking, F2RL3 methylation, and prognosis in stable coronary heart disease. *Eur Heart J.* 2012;33:2841–8.
  27. Keller T, Zeller T, Ojeda F, Tzikas S, Lillpopf L, Sinning C, Wild P, Genth-Zotz S, Warnholtz A, Giannitsis E, Möckel M, Bickel C, Peetz D, Lackner K, Baldus S, Münzel T, Blankenberg S. Serial changes in highly sensitive troponin I assay and early diagnosis of myocardial infarction. *JAMA.* 2011;306:2684–93.
  28. Keller T, Zeller T, Peetz D, Tzikas S, Roth A, Czyz E, Bickel C, Baldus S, Warnholtz A, Fröhlich M, Sinning CR, Eleftheriadis MS, Wild PS, Schnabel RB, Lubos E, Jachmann N, Genth-Zotz S, Post F, Nicaud V, Tiret L, Lackner KJ, Münzel TF, Blankenberg S. Sensitive troponin I assay in early diagnosis of acute myocardial infarction. *N Engl J Med.* 2009;361:868–77.
  29. Kulathinal S, Niemelä M, Niiranen T, Saarela O, Palosaari T, Tapanainen H, Kuulasmaa K, Participating Centres for the MProject contributors from. Description of MORGAM Cohorts. MORGAM Project e-publications. <https://www.thl.fi/publications/morgam/index.html>. Accessed 14 Sep 2020.
  30. Levey AS, Stevens LA, Schmid CH, Zhang YL, Castro AF, Feldman HI, Kusek JW, Eggers P, Van Lente F, Greene T, Coresh J, CKD-EPI (Chronic Kidney Disease Epidemiology Collaboration). A new equation to estimate glomerular filtration rate. *Ann Intern Med.* 2009;150:604–12.
  31. Inker LA, Eckfeldt J, Levey AS, Leidecker-Foster C, Rynders G, Manzi J, Waheed S, Coresh J. Expressing the CKD-EPI (Chronic Kidney Disease Epidemiology Collaboration) cystatin C equations for estimating GFR with standardized serum cystatin C values. *Am J Kidney Dis Off J Natl Kidney Found.* 2011;58:682–4.
  32. Waldeyer C, Makarova N, Zeller T, Schnabel RB, Brunner FJ, Jørgensen T, Linneberg A, Niiranen T, Salomaa V, Jousilahti P, Yarnell J, Ferrario MM, Veronesi G, Brambilla P, Signorini SG, Iacoviello L, Costanzo S, Giampaoli S, Palmieri L, Meisinger C, Thorand B, Kee F, Koenig W, Ojeda F, Konnto J, Landmesser U, Kuulasmaa K, Blankenberg S. Lipoprotein(a) and the risk of cardiovascular disease in the European population: results from the BiomaCaRE consortium. *Eur Heart J.* 2017;38:2490–8.
  33. Conroy RM, Pyörälä K, Fitzgerald AP, Sans S, Menotti A, De Backer G, De Bacquer D, Ducimetière P, Jousilahti P, Keil U, Njølstad I, Oganov RG, Thomsen T, Tunstall-Pedoe H, Tverdal A, Wedel H, Whincup P, Wilhelmsen L, Graham IM, SCORE project group. Estimation of ten-year risk of fatal cardiovascular disease in Europe: the SCORE project. *Eur Heart J.* 2003;24:987–1003.
  34. Fox CS, Matsushita K, Woodward M, Bilo HJG, Chalmers J, Heerspink HJL, Lee BJ, Perkins RM, Rossing P, Sairenchi T, Tonelli M, Vassalotti JA, Yamagishi K, Coresh J, Jong PE de, Wen C-P, Nelson RG, Chronic Kidney Disease Prognosis Consortium. Associations of kidney disease measures with mortality and end-stage renal disease in individuals with and without diabetes: a meta-analysis. *Lancet Lond Engl.* 2012;380:1662–1673.
  35. Pencina MJ, D'Agostino RB, Pencina KM, Janssens ACJW, Greenland P. Interpreting incremental value of markers added to risk prediction models. *Am J Epidemiol.* 2012;176:473–81.
  36. Brück K, Stel VS, Gambaro G, Hallan S, Völzke H, Ärnlöv J, Kastarinen M, Geussous I, Vinhas J, Stengel B, Brenner H, Chudek J, Romundstad S, Tomson C, Gonzalez AO, Bello AK, Ferrieres J, Palmieri L, Browne G, Capuano V, Van Biesen W, Zoccali C, Gansevoort R, Navis G, Rothenbacher D, Ferraro PM, Nitsch D, Wanner C, Jager KJ, European CKD Burden Consortium. CKD prevalence varies across the European general population. *J Am Soc Nephrol JASN.* 2016;27:2135–47.
  37. Rothenbacher D, Klenk J, Denking M, Karakas M, Nikolaus T, Peter R, Koenig W, ActiFE Study Group. Prevalence and determinants of chronic kidney disease in community-dwelling elderly by various estimating equations. *BMC Public Health.* 2012;12:343.
  38. Canales MT, Blackwell T, Ishani A, Taylor BC, Hart A, Barrett-Connor E, Lewis C, Beyth RJ, Stone K, Ensrud KE, Outcomes of Sleep Disorders In Older Men (Mros Sleep) Study. Estimated GFR and mortality in older men: are all eGFR formulae equal. *Am J Nephrol.* 2016;43:325–33.
  39. Svensson-Färbom P, Ohlson Andersson M, Almgren P, Hedblad B, Engström G, Persson M, Christensson A, Melander O. Cystatin C identifies cardiovascular risk better than creatinine-based estimates of glomerular filtration in middle-aged individuals without a history of cardiovascular disease. *J Intern Med.* 2014;275:506–21.
  40. Lees JS, Welsh CE, Celis-Morales CA, Mackay D, Lewsey J, Gray SR, Lyall DM, Cleland JG, Gill JMR, Jhund PS, Pell J, Sattar N, Welsh P, Mark PB. Glomerular filtration rate by differing measures, albuminuria and prediction of cardiovascular disease, mortality and end-stage kidney disease. *Nat Med.* 2019;25:1753–60.
  41. Mahmoodi BK, Matsushita K, Woodward M, Blankestijn PJ, Cirillo M, Ohkubo T, Rossing P, Sarnak MJ, Stengel B, Yamagishi K, Yamashita K, Zhang L, Coresh J, Jong PE de, Astor BC, Chronic Kidney Disease Prognosis Consortium. Associations of kidney disease measures with mortality and end-stage renal disease in individuals with and without hypertension: a meta-analysis. *Lancet Lond Engl.* 2012;380:1649–1661.
  42. Shastri S, Katz R, Rifkin DE, Fried LF, Odden MC, Peralta CA, Chonchol M, Siscovick D, Shlipak MG, Newman AB, Sarnak MJ. Kidney function and mortality in octogenarians: Cardiovascular Health Study All Stars. *J Am Geriatr Soc.* 2012;60:1201–7.
  43. Canney M, Sexton DJ, O'Connell MDL, Kenny RA, Little MA, O'Seaghda CM. Kidney function estimated from cystatin C, but not creatinine, is related to objective tests of physical performance in community-dwelling older adults. *J Gerontol A Biol Sci Med Sci.* 2017;72:1554–60.

44. Shardlow A, McIntyre NJ, Fraser SDS, Roderick P, Raftery J, Fluck RJ, McIntyre CW, Taal MW. The clinical utility and cost impact of cystatin C measurement in the diagnosis and management of chronic kidney disease: a primary care cohort study. *PLoS Med.* 2017;14:e1002400.
45. Zonoozi S, Ramsay SE, Papacosta O, Lennon LT, Ellins EA, Halcox JPJ, Whincup P, Wannamethee SG. Chronic kidney disease, cardiovascular risk markers and total mortality in older men: cystatin C versus creatinine. *J Epidemiol Community Health.* 2019; 73:645–51.
46. Lim WH, Lewis JR, Wong G, Turner RM, Lim EM, Thompson PL, Prince RL. Comparison of estimated glomerular filtration rate by the chronic kidney disease epidemiology collaboration (CKD-EPI) equations with and without Cystatin C for predicting clinical outcomes in elderly women. *PLoS One.* 2014;9:e106734.
47. Rowe C, Sitch AJ, Barratt J, Brettell EA, Cockwell P, Dalton RN, Deeks JJ, Eaglestone G, Pellatt-Higgins T, Kalra PA, Khunti K, Loud FC, Morris FS, Ottridge RS, Stevens PE, Sharpe CC, Sutton AJ, Taal MW, Lamb EJ, eGFR-C Study Group. Biological variation of measured and estimated glomerular filtration rate in patients with chronic kidney disease. *Kidney Int.* 2019;96:429–35.
48. Fan L, Levey AS, Gudnason V, Eiriksdottir G, Andresdottir MB, Gudmundsdottir H, Indridason OS, Palsson R, Mitchell G, Inker LA. Comparing GFR estimating equations using cystatin C and creatinine in elderly individuals. *J Am Soc Nephrol JASN.* 2015;26:1982–9.
49. Inker LA, Schmid CH, Tighiouart H, Eckfeldt JH, Feldman HI, Greene T, Kusek JW, Manzi J, Van Lente F, Zhang YL, Coresh J, Levey AS, Investigators CKD-EPI. Estimating glomerular filtration rate from serum creatinine and cystatin C. *N Engl J Med.* 2012;367:20–9.

## Publisher's Note

Springer Nature remains neutral with regard to jurisdictional claims in published maps and institutional affiliations.

**Ready to submit your research? Choose BMC and benefit from:**

- fast, convenient online submission
- thorough peer review by experienced researchers in your field
- rapid publication on acceptance
- support for research data, including large and complex data types
- gold Open Access which fosters wider collaboration and increased citations
- maximum visibility for your research: over 100M website views per year

**At BMC, research is always in progress.**

Learn more [biomedcentral.com/submissions](https://biomedcentral.com/submissions)

