



OPEN ACCESS

ORIGINAL RESEARCH

# EGFR amplification and outcome in a randomised phase III trial of chemotherapy alone or chemotherapy plus panitumumab for advanced gastro-oesophageal cancers

Elizabeth C Smyth,<sup>1,2</sup> Georgios Vlachogiannis ,<sup>3,4</sup> Somaieh Hedayat,<sup>3,4</sup> Alice Harbery,<sup>5</sup> Sanna Hulkki-Wilson,<sup>3</sup> Massimiliano Salati,<sup>3,4</sup> Kyriakos Kouvelakis,<sup>6</sup> Javier Fernandez-Mateos,<sup>4</sup> George D Cresswell ,<sup>4</sup> Elisa Fontana,<sup>3</sup> Therese Seidlitz,<sup>7</sup> Clare Peckitt,<sup>6</sup> Jens C Hahne,<sup>3,4</sup> Andrea Lampis,<sup>3,4</sup> Ruwaida Begum,<sup>2</sup> David Watkins,<sup>2</sup> Sheela Rao,<sup>2</sup> Naureen Starling,<sup>2</sup> Tom Waddell,<sup>2,8</sup> Alicia Okines,<sup>2</sup> Tom Crosby,<sup>9</sup> Was Mansoor,<sup>8</sup> Jonathan Wadsley,<sup>10</sup> Gary Middleton,<sup>11</sup> Matteo Fassan,<sup>12</sup> Andrew Wotherspoon,<sup>13</sup> Chiara Braconi,<sup>2,5,14</sup> Ian Chau,<sup>2</sup> Igor Vivanco,<sup>5</sup> Andrea Sottoriva,<sup>4</sup> Daniel E Stange ,<sup>7,15,16</sup> David Cunningham,<sup>2</sup> Nicola Valeri ,<sup>2,3,4</sup>

► Additional material is published online only. To view, please visit the journal online (<http://dx.doi.org/10.1136/gutjnl-2020-322658>).

For numbered affiliations see end of article.

## Correspondence to

Dr Nicola Valeri, Molecular Pathology, The Institute of Cancer Research, Sutton, United Kingdom; [nicola.valeri@icr.ac.uk](mailto:nicola.valeri@icr.ac.uk)

DC and NV contributed equally. ECS and GV contributed equally.

ECS and GV are joint first authors.

DC and NV are joint senior authors.

Received 28 July 2020

Revised 14 October 2020

Accepted 15 October 2020

## ABSTRACT

**Objective** Epidermal growth factor receptor (EGFR) inhibition may be effective in biomarker-selected populations of advanced gastro-oesophageal adenocarcinoma (aGEA) patients. Here, we tested the association between outcome and *EGFR* copy number (CN) in pretreatment tissue and plasma cell-free DNA (cfDNA) of patients enrolled in a randomised first-line phase III clinical trial of chemotherapy or chemotherapy plus the anti-EGFR monoclonal antibody panitumumab in aGEA (NCT00824785).

**Design** *EGFR* CN by either fluorescence in situ hybridisation (n=114) or digital-droplet PCR in tissues (n=250) and plasma cfDNAs (n=354) was available for 474 (86%) patients in the intention-to-treat (ITT) population. Tissue and plasma low-pass whole-genome sequencing was used to screen for coamplifications in receptor tyrosine kinases. Interaction between chemotherapy and EGFR inhibitors was modelled in patient-derived organoids (PDOs) from aGEA patients.

**Results** *EGFR* amplification in cfDNA correlated with poor survival in the ITT population and similar trends were observed when the analysis was conducted in tissue and plasma by treatment arm. EGFR inhibition in combination with chemotherapy did not correlate with improved survival, even in patients with significant *EGFR* CN gains. Addition of anti-EGFR inhibitors to the chemotherapy agent epirubicin in PDOs, resulted in a paradoxical increase in viability and accelerated progression through the cell cycle, associated with p21 and cyclin B1 downregulation and cyclin E1 upregulation, selectively in organoids from *EGFR*-amplified aGEA.

**Conclusion** *EGFR* CN can be accurately measured in tissue and liquid biopsies and may be used for the selection of aGEA patients. EGFR inhibitors may antagonise the antitumour effect of anthracyclines with important implications for the design of future combinatorial trials.

## Significance of this study

### What is already known on this subject?

- Clinical trials combining epidermal growth factor receptor (EGFR) inhibitors and chemotherapy for advanced gastro-oesophageal adenocarcinomas (GEAs) have failed in unselected patient populations.
- Anecdotal data suggest that *EGFR* amplification might predict benefit from EGFR inhibitors in advanced GEA.
- Heterogeneous expression of biomarkers is an intrinsic characteristic of GEA and analysis of liquid biopsies as a tool to overcome inpatient heterogeneity is warranted.

### What are the new findings?

- We tested *EGFR* copy number in tissue and liquid biopsies from advanced GEA patients enrolled in a prospective randomised phase III trial of chemotherapy alone or chemotherapy plus the anti-EGFR monoclonal antibody panitumumab.
- *EGFR* status could be reliably detected in tissue and liquid biopsies and concordance between the two was observed in 95% of cases.
- *EGFR* amplification in tissue and circulating cell-free DNA appeared as a negative prognostic marker in the intention-to-treat population and in individual treatment arms.
- *EGFR*-amplified cases treated with EGFR inhibitors in combination with chemotherapy had a particularly poor prognosis. Using patient-derived organoids, we showed an antagonistic effect between anti-EGFR agents and the chemotherapy drug epirubicin specifically in *EGFR*-amplified organoids.



© Author(s) (or their employer(s)) 2020. Re-use permitted under CC BY. Published by BMJ.

**To cite:** Smyth EC, Vlachogiannis G, Hedayat S, et al. *Gut* Epub ahead of print: [please include Day Month Year]. doi:10.1136/gutjnl-2020-322658

## Significance of this study

## How might it impact on clinical practice in the foreseeable future?

- ▶ Our study demonstrates the robustness and feasibility of biomarker testing in liquid biopsies of advanced gastro-oesophageal adenocarcinoma (GEA) patients. Liquid biopsies could be used in prospective trials for advanced GEA patients as a screening tool.
- ▶ Epidermal growth factor receptor inhibitors should not be combined with chemotherapy regimens containing anthracyclines with significant implications in GEA and other tumour types.
- ▶ Patient-derived preclinical models are of paramount importance in defining mechanisms of action of drug combinations.

## INTRODUCTION

Amplification of receptor tyrosine kinases is a hallmark of gastric and oesophageal adenocarcinomas, with epidermal growth factor receptor (EGFR) amplification occurring in 6%–10% of gastro-oesophageal adenocarcinomas (GEAs).<sup>1–3</sup> Although there is level 1 evidence supporting treatment of GEA and breast tumours which harbour amplifications of human epidermal growth factor receptor 2 (HER2) with anti-HER2 therapy, the effect of targeting the EGFR axis in *EGFR*-amplified tumours is less well established.<sup>4–6</sup> Two large randomised trials, REAL3 and EXPAND, evaluated the efficacy of addition of anti-EGFR monoclonal antibodies (mAb) to cytotoxic chemotherapy in patients with unselected, treatment naïve advanced GEA.<sup>7–8</sup> Neither trial demonstrated an improvement in survival for anti-EGFR treated patients in a non-biomarker selected patient population. However, emerging translational analyses from unselected clinical trials and new early phase trials in biomarker-defined subgroups suggest that a population of *EGFR*-amplified GEA exist who might benefit from anti-EGFR therapy.<sup>2–9</sup> If future clinical trials seek to evaluate the efficacy of anti-EGFR therapy in biomarker-enriched populations, understanding the interaction between *EGFR* amplification and chemotherapy outcome is essential for rational trial design. Additionally, as heterogeneous expression of biomarkers is a fundamental characteristic of gastro-oesophageal cancers, analysis of liquid biopsies as a tool to overcome inpatient heterogeneity is warranted.<sup>10–11</sup>

In this study, we tested the association between *EGFR* amplification and clinical outcome in patients treated with epirubicin, oxaliplatin and capecitabine plus or minus panitumumab (EOX±P) in the REAL3 (randomised trial of EOX with or without panitumumab in Advanced or Locally Advanced Oesophagogastric Cancer 3) Trial (NCT00824785). *EGFR* status was tested by digital-droplet PCR (ddPCR) and fluorescent in situ hybridisation (FISH) in tumour samples and by ddPCR in plasma samples, and was correlated with progression free (PFS) and overall survival (OS) in the trial population. Patient-derived organoids (PDOs) from *EGFR*-amplified and non-amplified metastatic GEA patients<sup>12–13</sup> were used for reverse translation in order to study the interaction between chemotherapy and EGFR inhibitors.

## METHODS

## REAL3 Trial Population

Details of the REAL3 trial have been previously described.<sup>8</sup> REAL3 eligible patients had a diagnosis of locally advanced or

metastatic oesophagogastric cancer and were treated with EOX (epirubicin, oxaliplatin and capecitabine) plus or minus the fully human monoclonal IgG<sub>2</sub> anti-EGFR antibody panitumumab. Patients treated with EOX plus panitumumab had inferior OS compared with patients treated with EOX (HR 1.37, 95% CI 1.07 to 1.76; *p*=0.013). From the REAL3 patient population (*n*=553), pretreatment tumour biopsies (tissue blocks) with high tumour content (>30%) were selected by a pathologist. All patients included in this analysis had given informed consent for translational research. DNA was extracted from formalin fixed paraffin embedded (FFPE) pretreatment tumour biopsies using QIAamp DNA FFPE (Qiagen, Manchester, UK). Cell-free DNA (cfDNA) was extracted from two ml of patient plasma using the QIAamp DNA Blood Mini Kit (Qiagen, Manchester, UK). cfDNA was eluted in 50 µL of elution buffer and quantified using the Qubit dsDNA HS Assay Kit (Thermo Fisher Scientific, Loughborough, UK).

## Statistical methods

The objectives of the study were to test: (1) the sensitivity and specificity of *EGFR* testing by FISH vs ddPCR; (2) the correlation between *EGFR* status in solid (tissue) versus liquid (pretreatment cfDNA) biopsies; (3) the association between *EGFR* amplification, PFS and OS in the intention to treat population (ITT) and in each arm of the study separately and (4) descriptive analysis of PFS and OS in *EGFR* amplified cases based on treatment arm.

We defined *EGFR* amplification as *EGFR/CNTNAP2* ratio of  $\geq 2$  using ddPCR. Exploratory analyses also evaluated the effect of *EGFR* amplification when a higher cut-off was chosen for amplification (ddPCR ratio in tissue or plasma of  $\geq 5.0$ ). PFS and OS were estimated using the Kaplan-Meier method. Groups were compared using the log-rank test and Cox regression was used to generate HRs and 95% CIs. Response rates were compared between groups using logistic regression, which generated ORs and 95% CIs. In multivariate analysis, forward stepwise Cox regression was used to calculate corrected HRs and 95% CIs. Statistical analyses were performed using Stata V.13 (Timberlake Consultants, Richmond on Thames, UK).

Online supplemental methods can be found online.

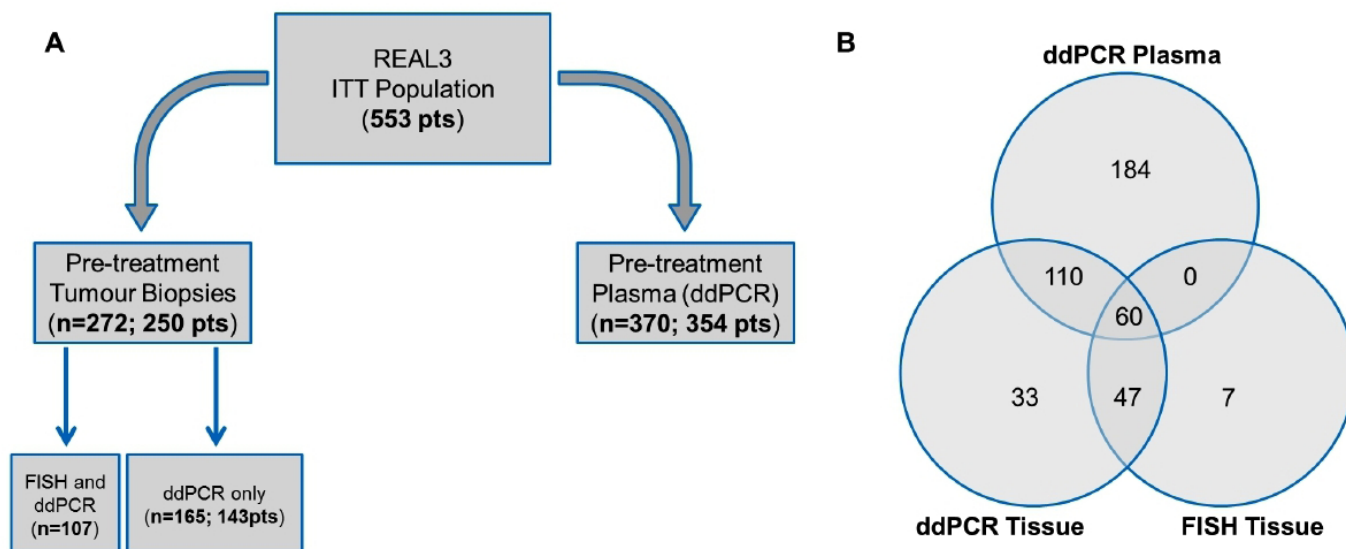
## RESULTS

## Study population and EGFR copy number analysis

Of the 553 REAL3 participants, 272 tissue samples from 250 patients and 370 pretreatment cfDNA samples from 354 patients were available for *EGFR* copy number variation (CNV) analysis either by FISH or ddPCR (figure 1A). In all patients with multiple tissue or cfDNA samples available, a 100% concordance in *EGFR* CNV was observed across samples.

*EGFR* CNV FISH data on chemo-naïve pretreatment tissue (resections or biopsies) were available in 114 out of 200 patients enrolled in the phase II portion of the REAL3 trial; reasons for no availability of results included: (1) lack of patient consent for analysis (*n*=10); (2) insufficient tumour tissue left following previous analyses (*n*=36); (3) technical failure (*n*=18); (4) other reasons for example, block returned to treating hospital (*n*=22). Of the 114 samples successfully tested, nine patients (7.9%) were found positive for *EGFR* amplification by FISH.

Using ddPCR, *EGFR* CNV score on pretreatment tissue was  $\geq 2.0$  in 17/250 (6.8%), and  $\geq 5.0$  in 12/250 (4.8%) patients. DdPCR *EGFR* CNV score on pretreatment cfDNA was  $\geq 2.0$  in 22/354 (6.2%) and  $\geq 5.0$  in 10/354 (2.8%) patients. Overall, cfDNA concentration appeared higher in metastatic compared with locally advanced cancers (*p*=0.08), while no significant



**Figure 1** Tissue and liquid biopsy analysis in the REAL3 trial. (A) Diagram shows the number of patients for whom FFPE tissues and plasma cfDNA were available for *EGFR* testing. (B) Venn diagram shows the number of patients tested for *EGFR* amplification based on source of material (FFPE tissues vs cfDNA) and method used (ddPCR vs FISH). cfDNA, cell free DNA; ddPCR, digital-droplet PCR; *EGFR*, epidermal growth factor receptor; FFPE, formalin-fixed paraffin embedded; FISH, fluorescent in situ hybridisation; ITT, intention to treat.

differences in cfDNA concentration were observed based on gender, localisation of the primary cancer (oesophagus, junction or stomach), or based on presence of lung or peritoneal metastases. A small but significant difference in cfDNA concentration was, however, observed between patients with or without liver metastases ( $p=0.007$ ) (online supplemental table 1).

#### Comparative *EGFR* CN analysis in solid and liquid biopsies

Comparison between *EGFR* CNV determined by FISH and ddPCR on tissue was available in 107 cases, while comparison between *EGFR* CNV determined by ddPCR both on tissue and cfDNA was possible in 170 cases. Finally, comparison among *EGFR* CNV determined by ddPCR on tissue and cfDNA, as well as by FISH on tissue, was available in 60 cases. Overall, *EGFR* CNV status using either FISH, or ddPCR on tissue or cfDNA, was available in 474 patients (85.7% of the ITT population) (figure 1B).

In situ hybridisation is considered the gold standard for the determination of *HER2* CNV status in breast and gastro-oesophageal cancer<sup>14</sup>; we, therefore, used a similar approach for *EGFR* CNV status, and considered FISH as the reference. Concordance between *EGFR* CNV assessed by ddPCR and FISH on tumour tissue was 98%. Compared with FISH, ddPCR showed sensitivity of 1 (95% CI 0.61 to 1.00), specificity of 0.97 (95% CI 0.92 to 0.99), positive predictive value of 0.81 (95% CI 0.47 to 0.96), and negative predictive value of 0.95 (95% CI 0.95 to 1.00) (online supplemental table 2). Next, we compared *EGFR* CNV between matched pretreatment tissue and cfDNA samples, assessed by ddPCR. Overall, concordance was 94.7% (online supplemental table 3); six cases that scored as *EGFR*-amplified on tissue (3 of them with more than 12 *EGFR* copies) showed no amplification in cfDNA, while three cases showed *EGFR* amplification in cfDNA but not on the matched tissue. No significant differences in cfDNA concentration were observed in patients with or without *EGFR* amplification, suggesting that variable input of cfDNA is unlikely responsible for these discrepancies (online supplemental figure 1). Finally, when *EGFR* status was tested in the 60 cases for which data by FISH and ddPCR

on tissue, and by ddPCR on cfDNA were available, concordance between tissue and blood was 95%: 4 cases scored as *EGFR*-amplified and 53 cases as *EGFR* non-amplified by all the three methods, while in 3 cases an *EGFR* amplification was detected in tissue (by both FISH and ddPCR) but not in cfDNA (online supplemental table 4).

#### *EGFR* CN in tissue and prognosis in the REAL3 trial

Given the high concordance between *EGFR* status assessed by FISH and ddPCR on tissue samples, we performed a survival analysis on the 250 patients for whom ddPCR *EGFR* CNV data on tissue were available. Patient characteristics based on *EGFR* status in each treatment arm are shown in table 1. Patients whose tumours harboured *EGFR*-amplification (ddPCR CNV score  $\geq 2$ ) had a median PFS of 4.57 months (95% CI 2.5 to 10.56 months), compared with 6.41 months (95% CI 5.99 to 7.34 months) for non-amplified cases (HR 1.30 (95% CI 0.78 to 2.16);  $p=0.32$ ); a similar trend was observed when a higher threshold (ddPCR CNV score  $\geq 5$ ) was used for identifying *EGFR*-amplification (HR 1.70 (95% CI 0.92 to 3.12);  $p=0.09$ ) (online supplemental table 5). Similar observations were drawn when the PFS analysis was conducted by treatment arm using both cut-offs (online supplemental table 6). In multivariate analysis adjusting for sex, age, performance status, disease status (locally advanced vs metastatic), and histological subtype, *EGFR* amplification retained a negative prognostic value regardless of treatment arm (EOX arm HR 1.3 (95% CI 0.5 to 2.9); EOX-P=1.3 (95% CI 0.7 to 2.5)).

Patients with *EGFR*-amplified tumours (ddPCR CNV score  $\geq 2$ ) also had a lower median OS of 9.74 months (95% CI 3.68 to 11.35 months), compared with 11.18 months for patients with *EGFR* non-amplified tumours (95% CI 8.78 to 13.16 months) (HR 1.28 (95% CI 0.77 to 2.13);  $p=0.35$ ). A similar trend was observed when a higher cut-off (ddPCR CNV score  $\geq 5$ ) was applied in order to identify *EGFR* amplification (HR 1.5 (95% CI 0.82 to 2.79);  $p=0.47$ ) (online supplemental table 7). Analogous results were observed when the OS analysis was conducted by treatment arm for both cut-offs (online supplemental table 8).

**Table 1** Patient characteristics by treatment arm and *EGFR* status determined on tumour tissue (n=250)

	EOX arm		EOX-P arm	
	EGFR non-amplified (<2)	EGFR amplified (≥2)	EGFR non-amplified (<2)	EGFR amplified (≥2)
Median age (IQR)	62.6 (54.2–68.4)	63.8 (54.3–68.6)	63.2 (56.6–69.7)	63.1 (59.0–65.4)
Males (%)	97 (80.8)	7 (100)	89 (78.8)	10 (100)
Females (%)	23 (19.2)	–	24 (21.2)	–
PS 0 (%)	44 (36.7)	4 (57.1)	42 (37.2)	5 (50)
PS 1 (%)	69 (57.5)	2 (28.6)	65 (57.5)	5 (50)
PS 2 (%)	7 (5.8)	1 (14.3)	6 (5.3)	–
Locally advanced (%)	8 (6.7)	–	10 (8.9)	1 (10)
Metastatic (%)	112 (93.3)	7 (100)	103 (91.1)	9 (90)

EGFR, epidermal growth factor receptor; EOX, epirubicin, oxaliplatin, capecitabine; P, panitumumab; PS, performance status.

Given the small number of *EGFR*-amplified cases in our trial cohort limited the statistical power of the analysis, we sought to validate our findings in an independent cohort of GEA. We screened the cBioportal for Cancer Genomics<sup>15 16</sup> for localised and metastatic GEA cases for whom *EGFR* amplification status was available. Our search returned data on 2122 samples from 2054 patients (online supplemental figure 2A) across 11 non-overlapping studies. In line with our findings, *EGFR*-amplification was observed in approximately 6.5% of patients and was consistently associated with inferior OS, disease-specific survival, disease-free survival and PFS (online supplemental figure 2B-E) in the validation cohorts. Taken together these data strengthen the notion that *EGFR*-amplification may be a prognostic biomarker in GEA.

#### EGFR CN in circulating cfDNA and prognosis in the REAL3 trial

*EGFR* CNV was determined by ddPCR in cfDNA for 354 patients (table 2). In keeping with the results obtained from tissue, patients with *EGFR*-amplified disease had worse PFS (online supplemental table 9) and OS (figure 2; online supplemental table 10) compared with non-amplified cases. Patients with *EGFR*-amplified tumours exhibited a similar trend for worse PFS (online supplemental table 11) and OS (online supplemental table 12) also when survival analysis was conducted by treatment arm.

#### Combined analysis of the effect of EGFR CN and treatment on the outcome of patients in the REAL3 trial

*EGFR* CN gains extrapolated by tissue or cfDNA analyses were overall associated with worse outcome in the REAL3 ITT population, consistent with the concept that *EGFR* amplification is an oncogenic driver in GEA. Interestingly, however, when conducted by treatment arm, our survival analyses revealed that

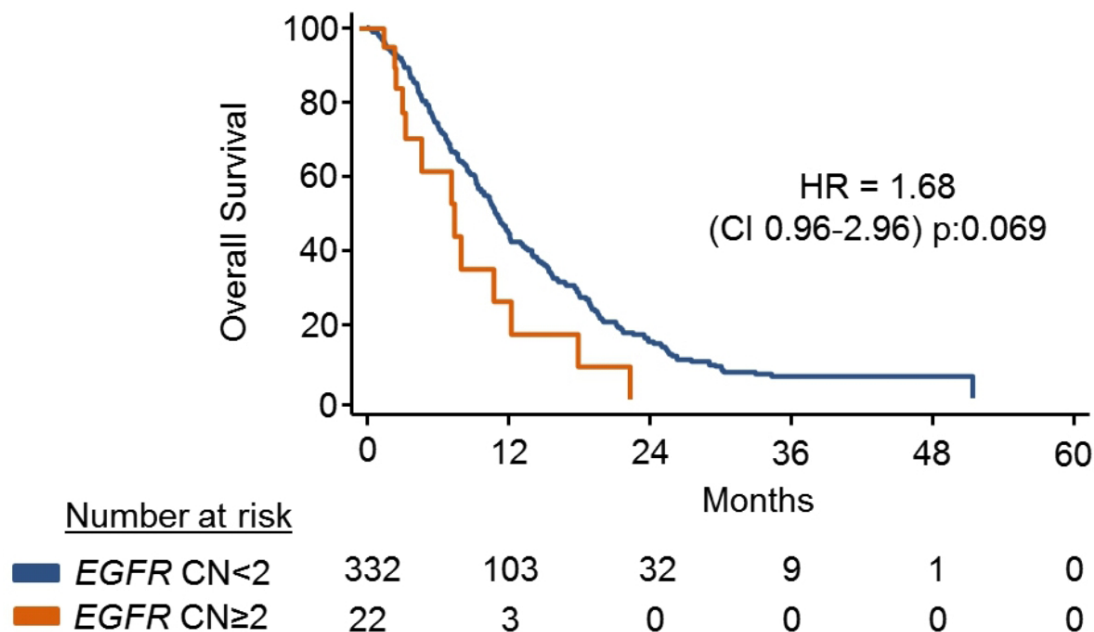
the anti-*EGFR* mAb panitumumab did not mitigate this negative prognostic effect in patients with *EGFR*-amplification. In keeping with the detrimental effect of panitumumab observed in the ITT population,<sup>8</sup> the combination of *EGFR* inhibition (*EGFRi*) and EOX chemotherapy was consistently associated with inferior outcome in both *EGFR* non-amplified (online supplemental table 13) and *EGFR*-amplified cases (online supplemental table 14). Despite the observation that adding panitumumab to EOX had a negative prognostic role in both groups, it was unexpected to notice that the negative association between *EGFRi* and EOX appeared more pronounced in patients whose tumour harboured an *EGFR* amplification (figure 3A; online supplemental table 14). Indeed, when the analysis was conducted among all the *EGFR*-amplified cases (based on plasma and cfDNA), the overall response rate was 78% in EOX vs 50% in EOX-P treated patients with a 6 months PFS of 71.4% (95% CI 44.7% to 100%) vs 39.8% (95% CI 24.1% to 65.9%) in EOX compared with EOX-P, respectively (online supplemental figure 3A,B).

Although the small number of patients in these subanalyses prevents drawing firm conclusions, it was interesting to notice that no benefit from *EGFRi* was observed even in cases with expected oncogene addiction due to significant levels of *EGFR* amplification (figure 3B). Given tyrosine kinase receptor coamplifications have been linked to benefit and resistance to *EGFRi*,<sup>17</sup> we also tested cfDNA from *EGFR*-amplified patients treated with EOX-P who had a PFS greater than 6 months for potential drivers of response or resistance. Tissue (n=3) and circulating cfDNA (n=7) were available for 9 out of 10 patients, for one patient both tissue and circulating cfDNA were available (PT23). Low coverage whole-genome sequencing (online supplemental table 15) confirmed the presence of *EGFR* amplifications in all the cases with good correlation in CN between ddPCR and

**Table 2** Patients characteristics by treatment arm and *EGFR* status determined on cfDNA (n=354)

	EOX arm		EOX-P arm	
	EGFR non-amplified (<2)	EGFR amplified (≥2)	EGFR non-amplified (<2)	EGFR amplified (≥2)
Median age (IQR)	62.8 (56.1–68.3)	60.8 (49.8–65.3)	63.4 (55.8–69.9)	62.7 (50.2–67.1)
Males (%)	139 (85.3)	3 (75)	138 (81.7)	16 (88.9)
Females (%)	24 (14.7)	1 (25)	31 (18.3)	2 (11.1)
PS 0 (%)	70 (42.9)	2 (50)	77 (45.6)	10 (55.5)
PS 1 (%)	82 (50.3)	2 (50)	85 (50.30)	7 (38.9)
PS 2 (%)	11 (6.8)	–	7 (4.1)	1 (5.6)
Locally advanced (%)	20 (12.3)	–	26 (15.4)	2 (11.1)
Metastatic (%)	143 (87.7)	4 (100)	143 (84.6)	16 (88.9)

cfDNA, cell-free DNA; EGFR, epidermal growth factor receptor; EOX, epirubicin, oxaliplatin, capecitabine; P, panitumumab; PS, performance status.



**Figure 2** Overall survival (OS) based on *EGFR*-amplification in the REAL3 trial. *EGFR* CN was determined using ddPCR on pretreatment cfDNA. Kaplan-Meier curves show the OS of patients based on the presence/absence of *EGFR* CN. cfDNA=cell free DNA; CN, copy number; ddPCR, digital-droplet PCR; EGFR, epidermal growth factor receptor;

WGS ( $r^2:0.82$ ;  $p:0.003$ ) for both tissue and plasma cfDNA. 70% of patients had coamplifications of receptor tyrosine kinase or other cancer-promoting genes, including *MET*, *KRAS*, *FGFR1*, *IGFR1*, *SRC* and *VEGFA*<sup>18–20</sup>, potentially associated with resistance to EGFR-inhibitors (figure 3C). Interestingly, the *VEGFA* amplification was not detected in the tissue but only in plasma for PT23 (online supplemental figure 4). Taken together, these data suggest that some of the partial responses and favourable outcomes observed in *EGFR*-amplified cases treated with EOX-P were probably driven by the EOX chemotherapy backbone alone rather than by *EGFRi*.

Inferior outcome in GEA patients treated with panitumumab in combination with an epirubicin-containing chemotherapy regimen compared with chemotherapy alone, has also been reported by the AIO/CAO STO-0801 trial.<sup>21</sup> Interestingly, a similar detriment was not observed in the EXPAND trial that investigated the addition of the anti-EGFR mAb cetuximab in a comparable chemotherapy backbone that excluded the anthracycline component.<sup>7</sup> Indeed, multiple lines of evidence suggest that anti-EGFR agents may be effective when combined with fluoropyrimidines and platinum compounds for the treatment of metastatic GEA cancers,<sup>29</sup> but evidence advocating their combination with anthracyclines are lacking and, if anything, point towards an antagonistic effect between anthracyclines and EGFRi.<sup>22</sup> Based on these data and prompted by the unexpected effect of the combination between panitumumab and chemotherapy in *EGFR*-amplified cases in the REAL3 trial (figure 3A), we investigated a potential antagonistic effect between epirubicin and EGFRi in GEA patients.

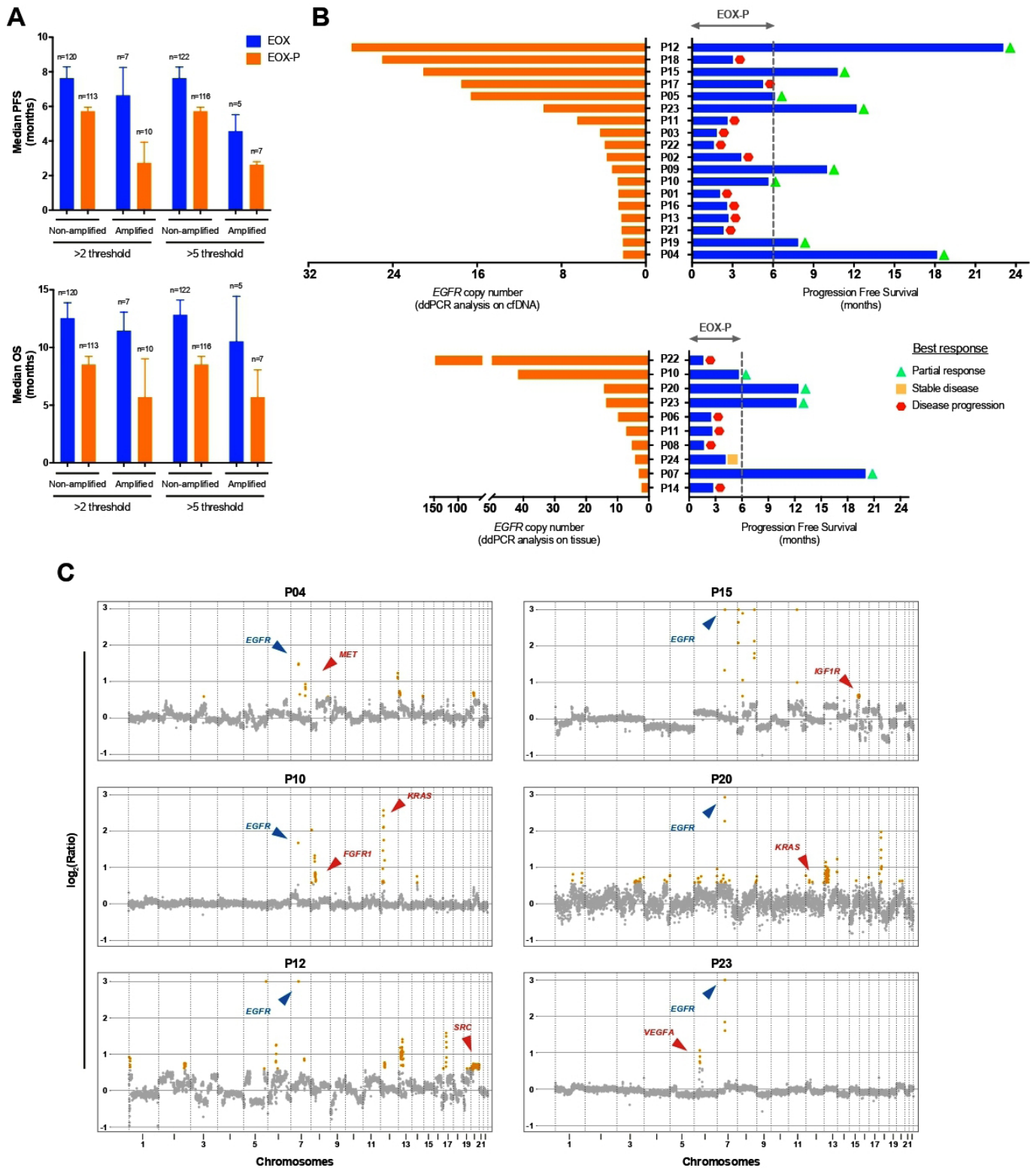
#### PDOs model antagonisms between anthracyclines and EGFRi

The lack of commercially available *EGFR*-amplified GEA cancer cells lines has so far hindered the pre-clinical testing of EGFRi in gastric cancer. Hereafter, using *EGFR*-amplified and non-amplified PDOs established from metastatic gastric adenocarcinomas<sup>12,13</sup> we provide experimental evidence of the antagonistic interaction between epirubicin and EGFRi in mGEA.

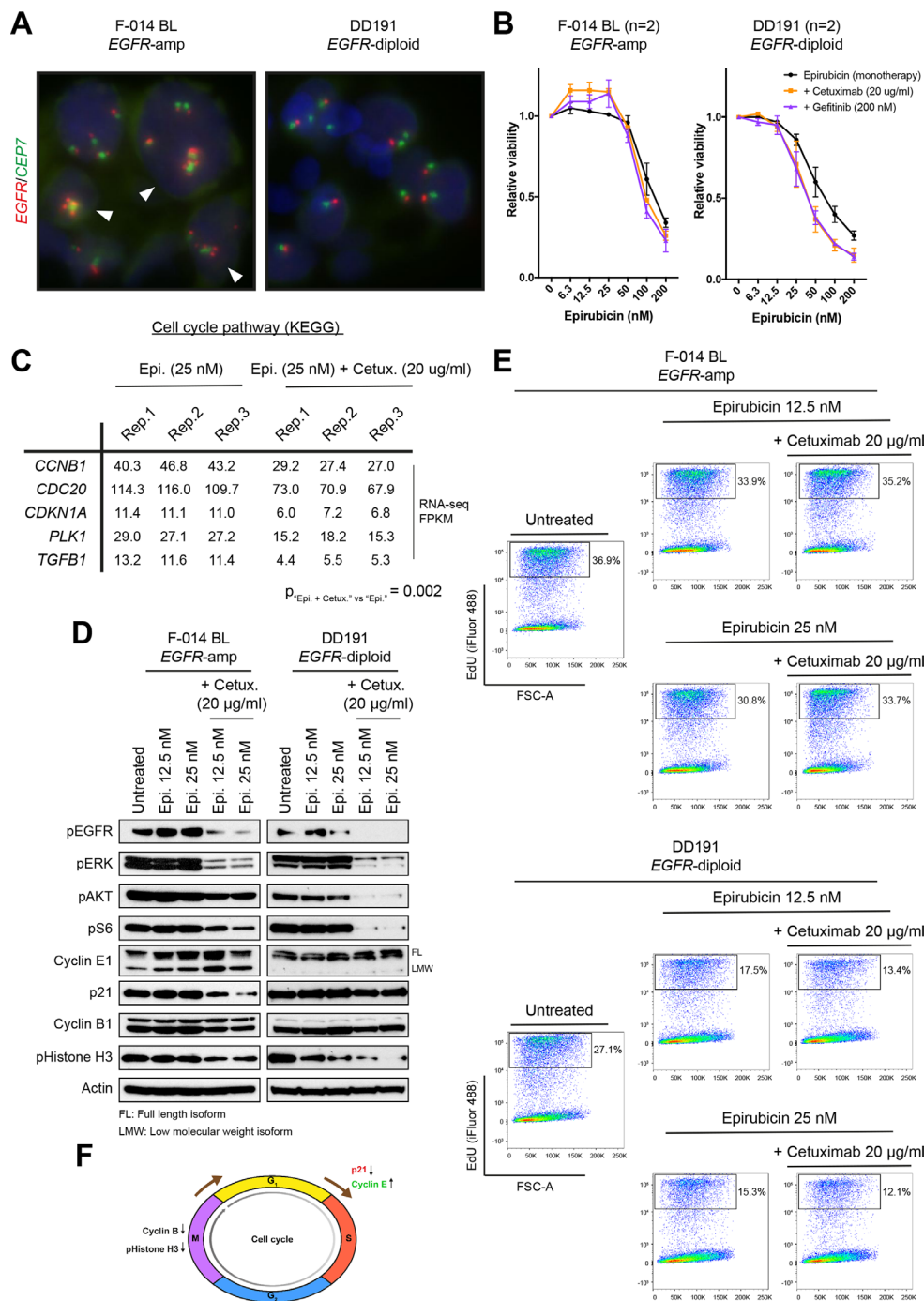
First, we modelled clinical observations<sup>29</sup> reported in *EGFR*-amplified GEA patients treated with single agent EGFRi (EGFRi), in *EGFR*-amplified PDOs from metastatic gastro-oesophageal cancers (figure 4A) and we showed a significant effect on cell viability on treatment with single-agent anti-EGFR small molecule gefitinib and, to a lesser extent, with the anti-EGFR mAb cetuximab (online supplemental figure 5A).

Next, we combined EGFRi with clinically relevant concentrations of epirubicin<sup>23</sup> and we observed a consistent increase in cell viability selectively in *EGFR*-amplified PDOs, but not in *EGFR* diploid PDOs (figure 4B and online supplemental figure 5B) or cell lines (online supplemental figure 6). In line with this, pathway analysis of RNA-seq data (online supplemental tables 16 and 17, online supplemental figure 7) from *EGFR*-amplified PDOs treated with epirubicin alone or in combination with cetuximab, showed that the combination of the anthracycline and the anti-EGFR agent significantly downregulated several cell cycle-related genes, including the G1/S negative regulator p21 (encoded by *CDKN1A*) and the M phase-related cyclin B1 (encoded by *CCNB1*; figure 4C). Protein expression analysis of *EGFR*-amplified and non-amplified PDOs treated with epirubicin alone or in combination with cetuximab confirmed that the combinatorial treatment did induce a notable down-regulation of both p21 and cyclin B1 proteins selectively in the former, coupled with increased levels of the S phase-promoting cyclin E1 (figure 4D). These data suggested that inhibition of EGFR signalling in an anthracycline treatment background may have a cell cycle-promoting effect in *EGFR*-amplified but not in *EGFR*-non-amplified gastric cancer cells. Indeed, the acceleration of cell cycle on the addition of cetuximab selectively in epirubicin-treated *EGFR*-amplified gastric cancer PDOs was further confirmed using a thymidine analog-based DNA incorporation FACS assay (figure 4E).

Nuclear EGFR has been reported to promote DNA replication and repair, and enhance the expression of various cell cycle-related genes by functioning as a cotranscription factor.<sup>24</sup> We, therefore, tested whether nuclear EGFR is involved in the



**Figure 3** Clinical outcome by treatment arm in *EGFR*-amplified cases enrolled in the REAL3 trial. (A) Bars show OS and PFS (median±SE) in *EGFR*-amplified patients treated with chemotherapy alone (EOX) or chemotherapy plus panitumumab (EOX-P). Similar trends are observed when a cut-off of two or five *EGFR* copies is used. (B) Blue bars indicate PFS, orange bars indicate *EGFR* copies determined by ddPCR in plasma cfDNA (graph on the top) or tissue (bottom). (C) Plots show copy number changes in *EGFR* (blue) and other receptor tyrosine kinase genes (red) in patients with PFS greater than 6 months on treatment with EOX-P. Values outside of the y-axis limits are plotted at the limit. cfDNA, cell-free DNA; CN, copy number; ddPCR, digital-droplet PCR; *EGFR*, epidermal growth factor receptor; EOX, epirubicin+oxaliplatin+capecitabine; OS, overall survival; P, panitumumab; PFS, progression-free survival.



**Figure 4** Effect of epirubicin or epirubicin plus EGFR inhibitors in *EGFR*-amplified and non-amplified patient-derived organoids. (A) *EGFR* FISH images, demonstrating gain of copies and diploid status in the F-014 BL and DD191 human GEA PDO lines, respectively. (B) Concentration-dependent effect of epirubicin as a monotherapy or in combination with a stable dose of two different anti-EGFR agents (cetuximab, 20  $\mu\text{g}/\text{mL}$ ; gefitinib, 200 nM) in the *EGFR*-amplified F-014 BL and *EGFR*-diploid DD191 human GEA PDO lines. The combination of low epirubicin concentrations with anti-EGFR treatments results in a paradoxical increase in viability selectively in the *EGFR*-amplified F-014 BL GEA PDO line. Viability data shown are means $\pm$ SEM of indicated independent experiments. (C) Pathway analysis of RNAseq data from the *EGFR*-amplified F-014 BL GEA PDO line treated with a low concentration of epirubicin alone or in combination with cetuximab for 24 hours revealed a significant reduction in the expression of cell cycle-related genes associated with the epirubicin and cetuximab combination. RNA from three independent biological replicates were sequenced per condition. (D) Protein analysis of the *EGFR*-amplified F-014 BL and *EGFR*-diploid DD191 human GEA PDO lines treated with two low concentrations of epirubicin alone or in combination with cetuximab for 24 hours. In line with RNAseq data, a reduction in p21 and cyclin B1 protein levels was observed when epirubicin was combined with inhibition of EGFR and downstream MAPK and AKT signalling specifically in the *EGFR*-amplified organoid line. (E) EdU DNA incorporation assay following treatment of the *EGFR*-amplified F-014 BL and *EGFR*-diploid DD191 human GEA PDO lines with two low concentrations of epirubicin alone or in combination with cetuximab for 24 hours. The addition of cetuximab antagonises the antiproliferative effect of epirubicin and accelerates DNA synthesis specifically in the *EGFR*-amplified organoid line. (F) Proposed model of antagonism between epirubicin and anti-EGFR treatments in *EGFR*-amplified GEA. EGFR, epidermal growth factor receptor; FISH, fluorescent in situ hybridisation; FSC-A; forward scatter-area; GEA, gastro-oesophageal adenocarcinoma; KEGG, Kyoto Encyclopedia of Genes and Genomes; PDO, patient-derived organoid.

increase in proliferation observed in the *EGFR*-amplified PDOs in response to the epirubicin and anti-*EGFR* combinatorial treatment. Interestingly, cetuximab, both as a single agent and in combination with epirubicin, increased *EGFR* protein stability, leading to increased *EGFR* nuclear localisation; however, this cetuximab-mediated increase of nuclear *EGFR* was observed in both PDOs regardless of their *EGFR* CN status (online supplemental figure 8).

Taken together, our observations suggest that inhibition of *EGFR* signalling in a background of epirubicin treatment selectively induces the downregulation of the G1/S negative regulator p21 and the upregulation of the S phase-promoting cyclin E1 in *EGFR*-amplified gastric cancer PDOs, thereby leading to increased flux to the S phase of the cell cycle. Cyclin E1 upregulation has been linked to shortened mitosis and increased mitotic exit.<sup>25</sup> These observations, together with decreased levels of M phase-associated proteins observed when epirubicin is combined with cetuximab (figure 4D), suggest that inhibition of *EGFR* in a background of epirubicin treatment may also speed up the M-to-G1 transition in *EGFR*-amplified PDOs, thereby leading to an overall accelerated progression through the cell cycle (figure 4F). Increased nuclear localisation of *EGFR* was observed in cells treated with the combination of epirubicin and cetuximab irrespective of *EGFR* status and, this phenomenon, might partially explain the detrimental effect caused by the addition to panitumumab to EOX in the REAL3 trial population. The activation of additional cotranscriptional factors in *EGFR*-amplified cases might account for the paradoxical effect observed specifically in this subgroup of patients.

## DISCUSSION

In this study, using ddPCR performed on routine diagnostic biopsies obtained from oesophagogastric cancer patients treated in the REAL3 trial, we identify a 7% prevalence of patients with *EGFR*-amplified tumours, which is consistent with the literature.<sup>1–3</sup> We demonstrate that *EGFR* analysis in plasma is complementary to *EGFR* amplification detection in tumour tissue, and *EGFR* amplification appears associated with poor prognosis, even though these data are not statistically significant likely due to the small number of *EGFR*-amplified cases. Our results also suggest that *EGFR*-amplified tumours did not benefit from anti-*EGFR* therapy in combination with chemotherapy; in fact, both our clinical and preclinical data suggest an antagonistic effect between anthracyclines and anti-*EGFR*, with potential implications for the design of future drug combination trials.

*EGFR* amplification is observed in 6%–10% of gastric and gastro-oesophageal cancers across multiple datasets, and is recognised as negatively prognostic in surgically treated patients.<sup>26–28</sup> However, the association between *EGFR* amplification and outcome in patients with metastatic gastro-oesophageal cancer treated with cytotoxic chemotherapy in the context of a clinical trial has not been previously described. In the perioperative phase II randomised AIO/CAO STO-0801 trial assessing the addition of panitumumab to perioperative epirubicin, cisplatin and capecitabine chemotherapy in unselected patients with resectable gastro-oesophageal cancer, both *EGFR* overexpression or gene amplification were negatively prognostic for survival, independent of treatment arm.<sup>21</sup> Interestingly, the HR for OS in AIO/CAO STO-0801 which used an almost identical chemotherapy regimen (ECX) and the same anti-*EGFR* therapy as REAL3 (panitumumab) was strikingly similar to the REAL3 results (ECX-P vs ECX HR 1.37, 95% CI 0.84 to 2.25,  $p=0.2$ ). However, this result lacks statistical power due to the relatively

modest size of the AIO/CAO STO-0801 trial ( $n=160$ ). Notably, the EXPAND trial which investigated the addition of cetuximab to cisplatin and fluoropyrimidine chemotherapy did not use an anthracycline and did not demonstrate a significant detriment to anti-*EGFR* therapy.<sup>7</sup> Furthermore, in EXPAND patients with the highest levels of *EGFR* protein expression appeared to have an increased benefit from cetuximab.<sup>7,29</sup> Although our data and the retrospective analyses of AIO/CAO STO-0801 and EXPAND trials are based on small numbers of patients with *EGFR*-amplified cancers, they are provocative as, taken together, suggest a negative interaction between anti-*EGFR* therapy and anthracyclines in *EGFR*-amplified GEA.

Although first generation anti-*EGFR* trials in unselected GEA patients were negative, hints regarding the potential efficacy of anti-*EGFR* therapy in biomarker-selected populations have recently emerged in the literature.<sup>2,9,30</sup> For example, although the COG study of gefitinib compared with best supportive care in unselected previously treated oesophageal cancer patients did not show a benefit in survival for gefitinib, post hoc biomarker analysis using FISH for *EGFR* CN has suggested a significant survival benefit for *EGFR*-amplified tumours (OS benefit for gefitinib in *EGFR*-amplified HR=0.21, 95% CI 0.07 to 0.64;  $p=0.006$ ).<sup>9,11,30</sup> Similarly, in a study evaluating multiple *EGFR*i including ABT-806 and cetuximab in *EGFR*-amplified gastro-oesophageal cancers, several profound responses to single agent anti-*EGFR* therapy were observed (objective response rate 57%) and the median PFS for patients treated with anti-*EGFR* therapy alone and in combination was 10 months<sup>2</sup> and largely surpassed the benefits of standard cytotoxic chemotherapy in gastro-oesophageal cancer.

Heterogeneity of biomarker expression is common in gastro-oesophageal cancer, and can impact significantly on the efficacy of targeted therapy and trial results.<sup>10,31,32</sup> It is possible that ctDNA sampling may overcome some of the challenges associated with tissue heterogeneity as we have previously shown in colorectal cancer,<sup>33</sup> however, ctDNA may not be present in all gastro-oesophageal cancer patients as its load relates to tumour burden.<sup>34</sup> In keeping with this observation, higher ctDNA concentrations were observed in metastatic compared with locally advanced patients in our analysis. Detection of gene amplification in plasma has been suggested to be prognostic for targeting *HER2* and *FGFR2*-amplified gastro-oesophageal tumours.<sup>31,35</sup> and screening for multiple simultaneous amplifications might have important implications. 70% of *EGFR*-amplified patients tested by WGS in our study showed coamplification in other targetable oncogenes such as *MET*. Future studies using targeted approaches such as nanoString nCounter technology or low-pass WGS might further classify patients into three categories: (1) those whose tumours do not harbour coamplifications and are more likely to benefit from *EGFR*i; (2) those that carry targetable coamplifications that can be therapeutically exploited in anti-*EGFR* drug combinations; (3) those with undruggable coamplifications such as those in *EGFR* and *KRAS* that are less likely to benefit from *EGFR*i alone.

The optimal cut-off for sensitivity to anti-*EGFR* therapy and the value of targeting this axis in *EGFR*-amplified gastro-oesophageal cancer have not yet been fully delineated: Maron *et al* observed responses to anti-*EGFR* therapy in patients with *EGFR* CN over the 50th percentile (2.4 copies in plasma).<sup>2</sup> However, it is plausible that higher levels of *EGFR* amplification (and as such oncogene addiction) could enrich future trials for patients more likely to respond to anti-*EGFR* therapy.

A potential limitation of this study is that approximately half of REAL3 tumours had tissue available for amplification



testing as many samples were used in previous biomarker studies.<sup>36,37</sup> Specifically, small numbers of *EGFR*-amplified cases were included in the survival analyses limiting the power of this work. That being said, it is worth considering that: (1) the prognostic trend for *EGFR* amplification was also confirmed in liquid biopsies (available for 65% of the ITT cohort) and 200 patients in this analysis did not overlap with those presented for tissue analysis and (2) in multivariate analyses, the effect of *EGFR* amplification on survival appeared to be consistent when adjusted for potential confounders. The second potential limitation of our study is the a priori difference in chemotherapy dose and in survival between the arms of the trial. Patients treated in the EOX-P arm of REAL3 received a dose reduction of oxaliplatin and capecitabine chemotherapy following the results of a safety run-in study. However, we performed our analyses both in the ITT population and by treatment arm in an effort to mitigate this difference. A third consideration relates to the negative interaction between panitumumab and other chemotherapy agents in the REAL3 trial. Indeed, conflicting results are available on the negative interaction between oxaliplatin and cetuximab in metastatic colorectal cancer patients.<sup>38–40</sup> The observation that a reduction in reactive oxygen species in response to cetuximab treatment can impair oxaliplatin-induced apoptosis provides a biological explanation for these clinical observations.<sup>41</sup> Whether this hypothesis contributes to explain the inferior outcome observed in EOX-P treated patients in the REAL3 trial remains to be confirmed. However, given durable responses to FOLFOX+ cetuximab have been observed in *EGFR*-amplified metastatic gastro-oesophageal cancer patients<sup>2</sup> and chemotherapy regimens containing anthracyclines in combination with panitumumab have been consistently associated with inferior outcomes compared with chemotherapy alone,<sup>8,42</sup> we focused our preclinical analysis on the antagonism between epirubicin and *EGFR*.

In conclusion, herein, we present results that suggest that *EGFR* status can be measured using ddPCR in tumour and plasma in a cost-effective way and that *EGFR* amplification is associated with a negative survival outcome in patients with GEA independent of treatment arm. Our results also emphasise the challenge in designing optimal drug combinations in absence of robust patient-centred preclinical models. In view of the relatively rarity of *EGFR*-amplified gastro-oesophageal cancers, we suggest that international collaborative efforts may be required in order to facilitate prospective trials enriched for *EGFR*-amplified tumours based on liquid biopsy testing.

#### Author affiliations

<sup>1</sup>Department of Oncology, Cambridge University Hospitals NHS Foundation Trust, Cambridge, UK

<sup>2</sup>Department of Medicine, Royal Marsden Hospital NHS Trust, London, UK

<sup>3</sup>Molecular Pathology, The Institute of Cancer Research, Sutton, UK

<sup>4</sup>Centre for Evolution and Cancer, The Institute of Cancer Research, Sutton, UK

<sup>5</sup>Cancer Therapeutics, The Institute of Cancer Research, Sutton, UK

<sup>6</sup>Clinical Research & Development, Royal Marsden Hospital NHS Trust, London, UK

<sup>7</sup>Department of Visceral, Thoracic and Vascular Surgery, University Hospital Carl Gustav Carus, Dresden, Germany

<sup>8</sup>Department of Medical Oncology, Christie Hospital, Manchester, UK

<sup>9</sup>Department of Clinical Oncology, Velindre Cancer Centre, Cardiff, UK

<sup>10</sup>Cancer Clinical Trials Centre, Weston Park Cancer Centre, Sheffield, UK

<sup>11</sup>Institute of Immunology and Immunotherapy, University of Birmingham, Birmingham, UK

<sup>12</sup>Department of Medicine (DIMED), University of Padua, Padua, Italy

<sup>13</sup>Histopathology, Royal Marsden Hospital NHS Trust, London, UK

<sup>14</sup>Institute of Cancer Sciences, University of Glasgow, Glasgow, UK

<sup>15</sup>German Cancer Consortium (DKTK), Partner Site Dresden, Heidelberg, Germany

<sup>16</sup>National Center for Tumor Diseases, Partner Site Dresden, Heidelberg, Germany

**Twitter** Igor Vivanco @IgorTheBioGuy

**Contributors** DC, DW, SR, NS, TW, AO, TC, WM, JW, GM and IC recruited patients in the trial. GV, SH, AH, SH, MS, JF-M, GDC, EF, TS, JH, AL, MF, CB, IV, AS and DES performed experiments. KK and CP performed statistical analyses. RB coordinated tissue collection, AW performed histopathology review. ES, DC and NV conceived the analysis and wrote the experimental protocol. ES, GV and NV wrote the manuscript. All the authors reviewed and approved the manuscript.

**Funding** This work was supported by Cancer Research UK (grant numbers A18052 and A22909), the National Institute for Health Research (NIHR) Biomedical Research Centre (BRC) at The Royal Marsden NHS Foundation Trust and The Institute of Cancer Research (grant numbers A62, A100, A101, A159) and the European Union FP7 (grant number CIG 334261) to NV. AS is supported by the Wellcome Trust (202778/B/16/Z) and Cancer Research UK (A22909). This work was also supported by funding from the National Institute of Health (NCI U54 CA217376) to AS, and from a Wellcome Trust award to the Centre for Evolution and Cancer (105104/Z/14/Z). The authors acknowledge support from the National Institute for Health Research Biomedical Research Centre at The Royal Marsden NHS Foundation Trust and The Institute of Cancer Research.

**Competing interests** ES declares honoraria for advisory role from Astellas, BMS, Celgene, Five Prime, Gritstone Oncology, and Servier. DW has received honoraria from Amgen. NS received research funding from AstraZeneca, Pfizer, BMS and honoraria from Servier, MSD, Merck Serono and AstraZeneca. JW received honoraria from Eisai, AstraZeneca, Sanofi-Genzyme, Ipsen, Novartis, Bayer, Celgene and Advanced Accelerator Applications. IC has had advisory roles with Merck Serono, Roche, Sanofi Oncology, Bristol Myers Squibb, Eli-Lilly, Novartis, Gilead Science. He has received research funding from Merck-Serono, Novartis, Roche and Sanofi Oncology, and honoraria from Roche, Sanofi-Oncology, Eli-Lilly, Taiho, Bayer and Prime Therapeutics. IV has received honoraria from AbbVie. He has received research funding from Genmab and Basilea. DC received research funding from 4SC, AstraZeneca, Bayer, Celgene, Clovis, Eli Lilly, Janssen, Medimmune, Merck, Merrimack, Amgen, Sanofi. NV received honoraria from Merck Serono, Pfizer, Bayer and Eli-Lilly. All other authors declare no conflict of interest.

**Patient consent for publication** Not required.

**Provenance and peer review** Not commissioned; externally peer reviewed.

**Data availability statement** All data relevant to the study are included in the article or uploaded as online supplemental information. RNA-Seq and WGS data are reported in the online supplemental tables.

**Supplemental material** This content has been supplied by the author(s). It has not been vetted by BMJ Publishing Group Limited (BMJ) and may not have been peer-reviewed. Any opinions or recommendations discussed are solely those of the author(s) and are not endorsed by BMJ. BMJ disclaims all liability and responsibility arising from any reliance placed on the content. Where the content includes any translated material, BMJ does not warrant the accuracy and reliability of the translations (including but not limited to local regulations, clinical guidelines, terminology, drug names and drug dosages), and is not responsible for any error and/or omissions arising from translation and adaptation or otherwise.

**Open access** This is an open access article distributed in accordance with the Creative Commons Attribution 4.0 Unported (CC BY 4.0) license, which permits others to copy, redistribute, remix, transform and build upon this work for any purpose, provided the original work is properly cited, a link to the licence is given, and indication of whether changes were made. See: <https://creativecommons.org/licenses/by/4.0/>.

#### ORCID iDs

Georgios Vlachogiannis <http://orcid.org/0000-0003-3114-8772>

George D Cresswell <http://orcid.org/0000-0003-3303-068X>

Daniel E Stange <http://orcid.org/0000-0003-4246-2230>

Nicola Valeri <http://orcid.org/0000-0002-5426-5683>

#### REFERENCES

- 1 Cancer Genome Atlas Research Network. Comprehensive molecular characterization of gastric adenocarcinoma. *Nature* 2014;513:202–9.
- 2 Maron SB, Alpert L, Kwak HA, et al. Targeted Therapies for Targeted Populations: Anti-*EGFR* Treatment for *EGFR*-Amplified Gastroesophageal Adenocarcinoma. *Cancer Discov* 2018;8:696–713.
- 3 Cancer Genome Atlas Research Network. Integrated genomic characterization of oesophageal carcinoma. *Nature* 2017;541:169–75.
- 4 Bang Y-J, Van Cutsem E, Feyereislova A, et al. Trastuzumab in combination with chemotherapy versus chemotherapy alone for treatment of HER2-positive advanced gastric or gastro-oesophageal junction cancer (ToGA): a phase 3, open-label, randomised controlled trial. *Lancet* 2010;376:687–97.
- 5 Romond EH, Perez EA, Bryant J, et al. Trastuzumab plus adjuvant chemotherapy for operable HER2-positive breast cancer. *N Engl J Med* 2005;353:1673–84.

- 6 Slamon DJ, Leyland-Jones B, Shak S, *et al.* Use of chemotherapy plus a monoclonal antibody against HER2 for metastatic breast cancer that overexpresses HER2. *N Engl J Med* 2001;344:783–92.
- 7 Lordick F, Kang Y-K, Chung H-C, *et al.* Capecitabine and cisplatin with or without cetuximab for patients with previously untreated advanced gastric cancer (expand): a randomised, open-label phase 3 trial. *Lancet Oncol* 2013;14:490–9.
- 8 Waddell T, Chau I, Cunningham D, *et al.* Epirubicin, oxaliplatin, and capecitabine with or without panitumumab for patients with previously untreated advanced oesophagogastric cancer (REAL3): a randomised, open-label phase 3 trial. *Lancet Oncol* 2013;14:481–9.
- 9 Petty RD, Dahle-Smith A, Stevenson DAJ, *et al.* Gefitinib and EGFR gene copy number aberrations in esophageal cancer. *J Clin Oncol* 2017;35:2279–87.
- 10 Pectasides E, Stachler MD, Derks S, *et al.* Genomic heterogeneity as a barrier to precision medicine in gastroesophageal adenocarcinoma. *Cancer Discov* 2018;8:37–48.
- 11 Tomasello G, Valeri N, Ghidini M, *et al.* First-Line dose-dense chemotherapy with docetaxel, cisplatin, folinic acid and 5-fluorouracil (dcf) plus panitumumab in patients with locally advanced or metastatic cancer of the stomach or gastroesophageal junction: final results and biomarker analysis from an Italian Oncology group for clinical research (GOIRC) phase II study. *Oncotarget* 2017;8:111795–806.
- 12 Seidlitz T, Merker SR, Rothe A, *et al.* Human gastric cancer modelling using organoids. *Gut* 2019;68:207–17.
- 13 Vlachogiannis G, Hedayat S, Vatsiou A, *et al.* Patient-Derived organoids model treatment response of metastatic gastrointestinal cancers. *Science* 2018;359:920–6.
- 14 Bartley AN, Washington MK, Colasacco C, *et al.* Her2 testing and clinical decision making in gastroesophageal adenocarcinoma: guideline from the College of American pathologists, American Society for clinical pathology, and the American Society of clinical oncology. *J Clin Oncol* 2017;35:446–64.
- 15 Cerami E, Gao J, Dogrusoz U, *et al.* The cBio cancer genomics portal: an open platform for exploring multidimensional cancer genomics data. *Cancer Discov* 2012;2:401–4.
- 16 Gao J, Aksoy BA, Dogrusoz U, *et al.* Integrative analysis of complex cancer genomics and clinical profiles using the cBioPortal. *Sci Signal* 2013;6:pl1.
- 17 Sanchez-Vega F, Hechtman JF, Castel P, *et al.* EGFR and MET Amplifications Determine Response to HER2 Inhibition in ERBB2-Amplified Esophagogastric Cancer. *Cancer Discov* 2019;9:199–209.
- 18 Chong CR, Jänne PA. The quest to overcome resistance to EGFR-targeted therapies in cancer. *Nat Med* 2013;19:1389–400.
- 19 Misale S, Di Nicolantonio F, Sartore-Bianchi A, *et al.* Resistance to anti-EGFR therapy in colorectal cancer: from heterogeneity to convergent evolution. *Cancer Discov* 2014;4:1269–80.
- 20 Ricordel C, Friboulet L, Facchinetti F, *et al.* Molecular mechanisms of acquired resistance to third-generation EGFR-TKIs in EGFR T790M-mutant lung cancer. *Ann Oncol* 2018;29:i28–37.
- 21 Stahl M, Maderer A, Lordick F, *et al.* Perioperative chemotherapy with or without epidermal growth factor receptor blockade in unselected patients with locally advanced oesophagogastric adenocarcinoma: Randomized phase II study with advanced biomarker program of the German Cancer Society (AIO/CAO STO-0801). *Eur J Cancer* 2018;93:119–26.
- 22 Buchholz TA, Tu X, Ang KK, *et al.* Epidermal growth factor receptor expression correlates with poor survival in patients who have breast carcinoma treated with doxorubicin-based neoadjuvant chemotherapy. *Cancer* 2005;104:676–81.
- 23 Tjuljandin SA, Doig RG, Sobol MM, *et al.* Pharmacokinetics and toxicity of two schedules of high dose epirubicin. *Cancer Res* 1990;50:5095–101.
- 24 Brand TM, Iida M, Luthar N, *et al.* Nuclear EGFR as a molecular target in cancer. *Radiother Oncol* 2013;108:370–7.
- 25 Bagheri-Yarmand R, Biernacka A, Hunt KK, *et al.* Low molecular weight cyclin E overexpression shortens mitosis, leading to chromosome missegregation and centrosome amplification. *Cancer Res* 2010;70:5074–84.
- 26 Birkman E-M, Álgars A, Lintunen M, *et al.* Egfr gene amplification is relatively common and associates with outcome in intestinal adenocarcinoma of the stomach, gastro-oesophageal junction and distal oesophagus. *BMC Cancer* 2016;16:406.
- 27 Higaki E, Kuwata T, Nagatsuma AK, *et al.* Gene copy number gain of EGFR is a poor prognostic biomarker in gastric cancer: evaluation of 855 patients with bright-field dual in situ hybridization (DISH) method. *Gastric Cancer* 2016;19:63–73.
- 28 Liao J-B, Lee H-P, Fu H-T, *et al.* Assessment of EGFR and ErbB2 (HER2) in gastric and gastroesophageal carcinomas: EGFR amplification is associated with a worse prognosis in early stage and well to moderately differentiated carcinoma. *Appl Immunohistochem Mol Morphol* 2018;26:374–82.
- 29 Lordick F, Kang Y-K, Salman P, *et al.* Clinical outcome according to tumor HER2 status and EGFR expression in advanced gastric cancer patients from the expand study. *JCO* 2013;31:4021.
- 30 Dutton SJ, Ferry DR, Blazeby JM, *et al.* Gefitinib for oesophageal cancer progressing after chemotherapy (COG): a phase 3, multicentre, double-blind, placebo-controlled randomised trial. *Lancet Oncol* 2014;15:894–904.
- 31 Pearson A, Smyth E, Babina IS, *et al.* High-Level clonal FGFR amplification and response to FGFR inhibition in a translational clinical trial. *Cancer Discov* 2016;6:838–51.
- 32 Van Cutsem E, Bang Y-J, Feng Yi F, *et al.* Her2 screening data from ToGA: targeting HER2 in gastric and gastroesophageal junction cancer. *Gastric Cancer* 2015;18:476–84.
- 33 Khan KH, Cunningham D, Werner B, *et al.* Longitudinal liquid biopsy and mathematical modeling of clonal evolution forecast time to treatment failure in the PROSPECT-C phase II colorectal cancer clinical trial. *Cancer Discov* 2018;8:1270–85.
- 34 Gao Y, Zhang K, Xi H, *et al.* Diagnostic and prognostic value of circulating tumor DNA in gastric cancer: a meta-analysis. *Oncotarget* 2017;8:6330–40.
- 35 Shoda K, Ichikawa D, Fujita Y, *et al.* Monitoring the HER2 copy number status in circulating tumor DNA by droplet digital PCR in patients with gastric cancer. *Gastric Cancer* 2017;20:126–35.
- 36 Cafferkey C, Smyth E, Loehr A, *et al.* Genomic loss of heterozygosity (LOH) and survival in patients (PTS) treated with epirubicin, oxaliplatin, capecitabine (EOC) ± panitumumab (P) in the REAL3 trial. *Annals of Oncology* 2016;27:vi220.
- 37 Okines AFC, Gonzalez de Castro D, Cunningham D, *et al.* Biomarker analysis in oesophagogastric cancer: results from the REAL3 and TransMAGIC trials. *Eur J Cancer* 2013;49:2116–25.
- 38 Maughan TS, Adams RA, Smith CG, *et al.* Addition of cetuximab to oxaliplatin-based first-line combination chemotherapy for treatment of advanced colorectal cancer: results of the randomised phase 3 MRC COIN trial. *Lancet* 2011;377:2103–14.
- 39 Primrose J, Falk S, Finch-Jones M, *et al.* Systemic chemotherapy with or without cetuximab in patients with resectable colorectal liver metastasis: the new EPOC randomised controlled trial. *Lancet Oncol* 2014;15:601–11.
- 40 Tveit KM, Guren T, Glimelius B, *et al.* Phase III trial of cetuximab with continuous or intermittent fluorouracil, leucovorin, and oxaliplatin (Nordic FLOX) versus FLOX alone in first-line treatment of metastatic colorectal cancer: the NORDIC-VII study. *J Clin Oncol* 2012;30:1755–62.
- 41 Santoro V, Jia R, Thompson H, *et al.* Role of reactive oxygen species in the abrogation of oxaliplatin activity by cetuximab in colorectal cancer. *J Natl Cancer Inst* 2016;108:djv394.
- 42 Rödel C, Graeven U, Fietkau R, *et al.* Oxaliplatin added to fluorouracil-based preoperative chemoradiotherapy and postoperative chemotherapy of locally advanced rectal cancer (the German CAO/ARO/AIO-04 study): final results of the multicentre, open-label, randomised, phase 3 trial. *Lancet Oncol* 2015;16:979–89.