

# Ant System and Weighted Voting Method for Multiple Classifier Systems

Abdullah Husin<sup>1</sup>, Ku Ruhana Ku-Mahamud<sup>2</sup>

<sup>1</sup>Department of Information Systems, Universitas Islam Indragiri, Indonesia

<sup>2</sup>School of Computing, Universiti Utara Malaysia, Malaysia

---

## Article Info

### Article history:

Received Jul 11, 2018

Revised Apr 16, 2018

Accepted Apr 30, 2018

---

### Keyword:

Ant system

Classifier ensemble construction

Combiner construction

Feature set partitioning

Multiple classifier system

---

## ABSTRACT

Combining multiple classifiers is considered as a general solution for classification tasks. However, there are two problems in combining multiple classifiers: constructing a diverse classifier ensemble; and, constructing an appropriate combiner. In this study, an improved multiple classifier combination scheme is proposed. A diverse classifier ensemble is constructed by training them with different feature set partitions. The ant system-based algorithm is used to form the optimal feature set partitions. Weighted voting is used to combine the classifiers' outputs by considering the strength of the classifiers prior to voting. Experiments were carried out using k-NN ensembles on benchmark datasets from the University of California, Irvine, to evaluate the credibility of the proposed method. Experimental results showed that the proposed method has successfully constructed better k-NN ensembles. Further more the proposed method can be used to develop other multiple classifier systems.

Copyright © 2018 Institute of Advanced Engineering and Science.  
All rights reserved.

---

## Corresponding Author:

Abdullah Husin,

Department of Information System, Universitas Islam Indragiri,

Jalan Provinsi Parit 1 Tembilahan Indragiri Hilir Riau, Indonesia.

Email: [abdialam@yahoo.com](mailto:abdialam@yahoo.com)

---

## 1. INTRODUCTION

Classification is an important function in data mining. One of the main issues in performing classification is to identify the classifier in order to obtain good classification accuracy. The use of a single classifier provides minimal exploitation of complementary information from other classifiers, while the combination of multiple classifiers may provide such additional information [1]. The goal of multiple classifier combination is to obtain a comprehensive result by combining the outputs of several individual classifiers [2]. This consists of a set of classifiers called classifier ensemble and a combination strategy for integrating classifier outputs called combiner.

Multiple classifier combination has been widely used in many application domains such as: speech recognition [3], human emotion recognition [4], video classification [5], face recognition [6], email classification [7], cancer classification [8], plant leaf identification [9], concept drift identification [10] and sukuk rating prediction [11]. Multiple classifier combination has been very useful in enhancing the performance of classification. However, there are two problems in developing multiple classifier combinations: constructing the classifier ensemble; and, constructing the combiner. There are no standard guidelines concerning how to construct a set of diverse and accurate classifiers and how to combine the classifier outputs [12]. Most previous studies focus on classifier ensemble construction and apply a simple fixed combiner to combine the outputs [13]. This study focused on both problems and reviews were performed on feature set partitioning and weighted voting combiner.

There are several approaches to construct a classifier ensemble. All such approaches attempt to generate diversity by creating classifiers that make errors on different patterns, thus they can be combined

effectively. The diversity among classifiers in ensemble is deemed to be a key success factor when to constructing classifier ensemble. Theoretically and empirically, it has been shown that a good ensemble has both accuracy and diversity [14]. One of the approaches used to construct a classifier ensemble is the feature decomposition method which manipulates input features in constructing a diverse classifier ensemble. This method decomposes the input features while training the classifier ensemble. Therefore this method is appropriate for high dimensionality data sets [15].

One of the cases of feature decomposition is feature set partitioning. Input features are randomly partitioned to several disjointed subsets. Consequently, each classifier is trained on different subsets. Feature set partitioning is appropriate for classification tasks containing large number of features [16], [17]. However, it is difficult to determine how to form optimal feature set partition to train classifiers to produce good performance.

Reviews of the set partitioning problem highlight that the ant system, which is a variant of ant colony optimization (ACO), is the most promising technique to be applied [18]. The ACO algorithm was introduced by Marco Dorigo in the early 1990s. This algorithm is inspired by the behavior of ants in finding the shortest path from the colony to the food; in order to find the shortest route they leave a pheromone on their tour paths. The ant-based algorithm has shown better performance than other popular heuristics such as simulated annealing and genetic algorithms [19]. The ant system (AS) algorithm is a variant of the ant based-algorithm. This is an original and most used ant-based algorithm in solving many optimization problems [20]. The ant system has also been used to solve the set partitioning problem. Set partitioning problems are difficult and very complicated combinatorial issues [21]. The use of ant system for set partitioning problem has been applied in constructing a classifier ensemble [22].

The most popular, fundamental and straightforward combiner is majority voting [23]. Every individual classifier votes for one class label. The class label that most frequently appears in the output of individual classifiers is the final output. To avoid the draw problem, the number of classifiers performed for voting is usually odd. Majority voting is often used to combine multiple classifiers in order to solve classification problems [24]. Previously popular ensemble methods such as bagging, boosting and random forest have used majority voting in combining classifier outputs. The advantages of majority voting include simplicity and lower computational cost. Majority voting enables combination of the output of classifiers regardless of what classifier is used. It is an optimal combiner in several ensemble methods [25]. However, the disadvantage of this combiner is that it does not consider the strength of the classifier [26].

Weighted voting is a trainable version of majority voting which, unlike majority voting, gives weight to each classifier before voting. To make an overall prediction, a weighted vote of the classifier predictions is performed to predict the class. There are several ways to determine the weight of classifiers [27]. The advantages of weighted voting include its flexibility and the potential to produce better performances than majority voting. This combiner has the potential to make multiple classifier combinations more robust to the choice of the number of individual classifiers [28]. In addition the accuracies of the classifiers can be reliably estimated, after which weighted voting may be considered [29]. Several studies have concentrated on weighted voting and have been proven to solve real-world problems such as face and voice recognition [30] and listed companies' financial distress prediction [31]. Therefore, in this study the weighted voting combiner is adapted as a combiner which considers the performance of each classifier.

## 2. RESEARCH METHOD

There are three steps to the research work: (1) classifier ensemble construction; (2) combiner construction; and (3) evaluation. In developing the multiple classifier system, effective combination must address the first two steps of ensemble construction and combiner construction. The ant system feature set partitioning algorithm is applied to construct classifier ensemble, while the weighted voting technique is applied as a combiner. Figure 1 shows the architecture of the proposed method which consists of two components namely the ant system feature set partitioning and the weighted voting combiner.

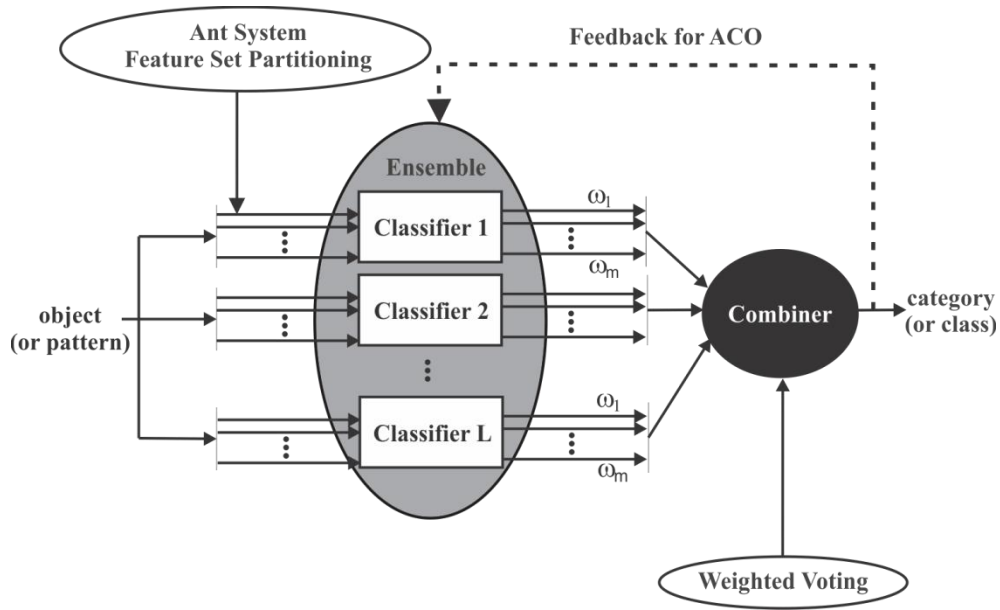


Figure 1. Architecture of the proposed method for multiple classifier system

**2.1. Classifier Ensemble Construction**

The classifier ensemble is built based on the feature set partitioning algorithm. A disjoint feature set partition is carried out based on the input feature set. An algorithm based on ant system is developed to perform feature set partitioning. The number of feature partitions is determined by the number of individual classifiers. The required inputs include feature set and category labels of the original data set. The input feature set is partitioned into different feature subsets and no feature in the training set is removed. Therefore, each individual classifier is trained on a different projection of the training set. The flowchart for feature decomposition is depicted in Figure 2.

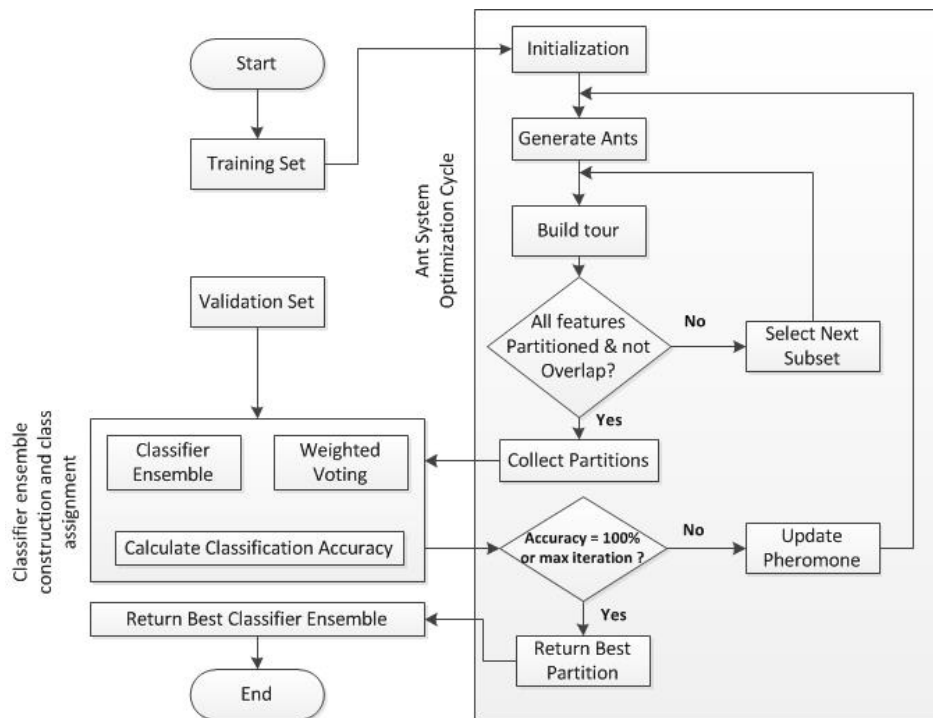


Figure 2. Flowchart of the ant system-based feature set partitioning algorithm

## 2.2. Combiner Construction

In this construction stage, the weighted voting method is used as the combiner. A learning process for each classifier on different partitions of features is performed by the ant system algorithm. Weights are given according to the performance of each classifier. The performance of each classifier depends on the feature set partition. Therefore, the voting weights of each classifier are updated dynamically based on the feature set partition. The idea behind this approach is that the classifier which is trained by different feature set partitions will provide different accuracies although one type of classifier is used in the ensemble. Classifiers that provide a high accuracy are more likely to classify patterns correctly. Let  $D = \{D_1, \dots, D_L\}$  be a set of individual classifiers (or an ensemble of classifiers) where  $L$  is the number of individual classifiers. Let  $\Omega = \{\omega_1, \omega_2, \omega_3, \dots, \omega_c\}$  be a set of class labels where  $c$  is the number of classes. Let  $T = \{x_i, y_i\}$  be a training set (a labelled dataset) where  $i = 1 \dots N$ ,  $N$  is the number of instances,  $x_i \in \mathcal{R}^n$  is the  $n$  dimensional feature vector of  $i$ -th instance and  $y_i \in \{\omega_1, \dots, \omega_c\}$  is the class label of the  $i$ -th instance. Each classifier  $D_j$  assigns an input feature vector to one of the predefined class labels, i.e.,  $D_j: \mathcal{R}^n \rightarrow \Omega$ . The output of a classifier ensemble is an  $L$  dimensional class label vector  $[D_1(x), \dots, D_L(x)]^T$ . The task is to combine  $L$  of individual classifier outputs to predict the class label from a set of possible class labels that make the best classification of the unknown pattern.

In formulating the weighted voting combiner, let us assume that only the class labels are available from the classifier outputs, and define the decision of the  $j$ -th classifier as  $d_{(j,k)} \in \{0,1\}$ ,  $j=1, \dots, L$  and  $k=1, \dots, C$ , where  $L$  is the number of classifiers and  $C$  is the number of classes. If  $j$ -th classifier  $D_j$  chooses class  $\omega_k$ , then  $d_{(j,k)}=1$  and 0 otherwise. The ensemble decision for the proposed weighted voting can be described as follows: choose class  $\omega_{(k^*)}$  if

$$\sum_{j=1}^L acc_j d_{j,k^*}(x) = \max_k \sum_{j=1}^L acc_j d_{j,k}(x) \quad (1)$$

where  $acc_j$  is the accuracy (or weight) of classifier  $D_j$ . The votes are multiplied by a weight before the actual voting. The weight is obtained by estimating the classification accuracy on a validation set.

## 2.3. Evaluation

In this step, the performance of multiple classifiers constructed by the proposed ant system and weighted voting (ASWV) method is measured and compared with several other ensemble methods. Experiments were conducted on 9 (nine) benchmark datasets taken from the University California, Irvine (UCI) repository. The  $k$ -Nearest Neighbour ( $k$ -NN) ensemble has also been used in the experiments. Table 1 shows a summary of the datasets used in the experiments.

Table 1. Summary of Datasets

No.	Datasets	Number of Instances	Number of Classes	Number of Features	Features Types
1	Haberman	306	2	3	Integer
2	Iris	150	3	4	Real
3	Lenses	24	3	4	Categorical
4	Liver	345	2	6	Categorical, Integer
5	Ecoli	336	8	7	Real
6	Prima Indians Diabetes	768	2	8	Integer, Real
7	Tic-Tac-Toe	958	2	9	Categorical
8	Glass	214	6	9	Real
9	Breast Cancer (Wisconsin)	699	2	9	Categorical

The  $k$ -fold cross-validation method was applied in the process of obtaining the classification accuracy [32]. A set of labeled samples are randomly partitioned into  $k$  disjoint folds of equal size. Then, one of the  $k$  folds is randomly selected as the testing set and the remaining  $(k-1)$  folds are selected as the training set with the assumption that there is at least one sample per class. The classification accuracy ( $acc$ ) is the ratio of numbers of all correctly classified instances and the total number of instances as shown in Equation 2.

$$acc = \frac{\text{no. of all correctly classified instances}}{\text{total number of instance}} * 100\% \quad (2)$$

Finally, the estimation of classification accuracy is obtained by dividing the total of all classification accuracies by the total number of folds or rounds as shown in Equation 3.

$$acc_{CV} = \frac{1}{k} \sum_{i=1}^k acc_i \quad (3)$$

$acc_i$  is the classification accuracy of round  $i$  and  $k$  is the number of folds. A common choice for  $k$ -fold cross validation is  $k=10$ . Extensive experiments have shown that 10 (ten) is the best choice to get an accurate estimate [33]–[35]. To obtain powerful performance estimation and comparisons, a large number of estimates are always preferred. Therefore, in this research, the experiments are conducted on ten times the 10-fold cross-validation method.

### 3. RESULTS AND ANALYSIS

The ant system algorithm was used to partition the feature set and weighted voting was used to combine classifier outputs. Experiments were carried out on nine (9) data sets from the UCI repository. Ten (10) experiments which consist of 10-fold cross validation method were carried out to validate the accuracy of single k-NN and constructed k-NN ensembles. Tables 2 shows the average and standard deviation of the classification accuracies of single k-NN, constructed k-NN ensembles based on random subspace and constructed k-NN ensembles with the used of ant system-based feature set partitioning respectively. It can be shown that a small standard deviation was obtained for all method which indicates the experiments were stable. The average accuracy of the constructed multiple k-NN by the proposed method was compared with the average accuracies of original single k-NN and constructed k-NN ensembles by the random subspace method. It can also be seen that the proposed method provides better accuracy than single approach and random space method in constructing k-NN ensembles. Improvements in accuracy are obtained on all datasets. The comparison of accuracies is as shown in Table 2.

Table 2. The Accuracy of Single k-NN, Random Subspace and Proposed Method

No	Dataset	Single k-NN		k-NN with Random Subspace		k-NN with Ant Syatem Proposed Method	
		Average	Standard Deviation	Average	Standard Deviation	Average	Standard Deviation
1	Haberman	68.83	1.37	67.91	1.96	68.53	0.79
2	Iris	95.67	0.47	93.40	0.47	96.34	0.35
3	Lenses	77.92	2.81	62.50	4.17	86.67	1.76
4	Liver	62.32	1.00	60.06	3.48	65.48	1.35
5	Ecoli	81.19	0.61	81.19	1.70	81.91	0.31
6	Pima	67.37	0.81	70.59	1.32	71.22	0.00
7	Tic-Tac-Toe	75.77	0.45	75.70	2.19	78.81	0.39
8	Glass	72.71	0.83	72.71	1.86	73.54	0.43
9	Breast Cancer	95.78	0.28	97.23	0.31	98.09	0.00

The proposed algorithm was successfully applied to form feature set partition. Table 3 shows the summary of the result of implementing this proposed algorithm. This table presents the feature set partition and the number of classifiers.

Table 3. Obtained Feature Set Partition and Number of Classifiers

No	Dataset	Partition	Number of Classifiers
1	Haberman	[1 3][2]	2
2	Iris	[1 2 3 4]	1
3	Lenses	[1 2 3 4]	1
4	Liver	[1 4 6][3 5][2]	3
5	Ecoli	[1 2 3 4 5 6 7]	1
6	Pima	[1 3 4 7][5 6 8][2]	3
7	Tic-Tac-Toe	[1 2 3 4 5 6 7 8 9]	1
8	Glass	[1 2 3 4 5 6 7 8 9]	1
9	Breast Cancer	[1 2 4 7 9][3 5][6][8]	4

The accuracy of the proposed method was also compared to the other common methods as shown in Table 4. The accuracy of the proposed method was evaluated by comparing the results to: (1) Single

classifier approach, (2) dynamic weighted voting [28], (3) improved  $k$ -NN classification using genetic algorithm (GA  $k$ -NN) [36], (4) simultaneous metaheuristic feature selection (SMFS) [37], (5) weighted  $k$ -NN ensemble method [27], (6) direct boosting algorithm [38], (7) cluster-oriented ensemble classifier (COEC) [39] and (8) evidential neural network [40]. The  $k$ -NN classifier was used as the base classifier. Based on the results, it can be seen that the proposed method gives the best classification accuracies as compared to the other methods on habermann and breast cancer dataset. In general, the proposed method gives good classification results and is comparable with other methods.

Table 4. Comparison of Accuracies with Common Ensemble Methods

Dataset	1	2	3	4	5	6	7	8	9
Haberman	66.83	-	-	-	71.89	-	-	-	<b>72.75</b>
Iris	95.67	<b>97.33</b>	-	-	95.20	96.70	96.00	94.93	96.34
Ecoli	81.19	-	-	-	<b>82.89</b>	-	-	-	81.91
Glass	72.71	-	-	-	<b>74.23</b>	72.50	-	-	73.54
Pima	67.37	72.68	-	71.90	-	<b>75.70</b>	-	71.79	71.22
Breast Cancer	95.78	96.35	97.92	97.50	-	-	97.72	-	<b>98.09</b>

- |                |                                     |                              |
|----------------|-------------------------------------|------------------------------|
| 1. Single k-NN | 2. Dynamic weighted voting          | 3. GA k-NN                   |
| 4. SMFS        | 5. Weighted $k$ -NN ensemble method | 6. Direct boosting algorithm |
| 7. COEC        | 8. Evidential neural network        | 9. Proposed ASWV method      |

#### 4. CONCLUSION

A new method based on the integration of the ant system and weighted voting for multiple classifier systems has been presented. The ant system was applied to optimize the feature set partition activity while weighted voting was used as a combiner. Experiment results show that the application of this method in combining several  $k$ -NNs as base classifier outperforms single  $k$ -NN, comparable with other ensemble methods. The results indicate that the proposed method can be applied in generating better  $k$ -NN ensembles. Furthermore, this method can determine the number of the combined classifiers based on the number of formed partitions.

Future research is to apply this method on other classifiers such as the Support Vector Machine, Neural Network and Decision Tree. The dynamic feature partition-selection approach can be considered to enhance the performance of this method. The method will, hopefully, be able to partition the feature set into several lower-dimensional feature sets, which would allow a set of classifiers to process low dimensional feature vectors simultaneously. Therefore, testing the ability of this method to overcome the high dimensional data and small training sample problems can be considered.

#### ACKNOWLEDGEMENTS

This work is supported by the Higher Education Ministry of Malaysia under the Long Term Research Grant Scheme (S/O code: 12490).

#### REFERENCES

- [1] K. Kim, H. Lin, J. Y. Choi, and K. Choi, "A design framework for hierarchical ensemble of multiple feature extractors and multiple classifiers," *Pattern Recognition*, 2015.
- [2] G. Baron, "Intelligent Decision Technologies," *Analysis of Multiple Classifiers Performance for Discretized Data in Authorship Attribution*, vol. 73, pp. 33–42, 2017.
- [3] S. Hegde, K. . Achary, and S. Shetty, "A multiple classifier system for automatic speech recognition," *International Journal of Computer Applications*, vol. 101, no. 9, pp. 38–43, 2014.
- [4] C. H. Wu and W. Bin Liang, "Emotion recognition of affective speech based on multiple classifiers using acoustic-prosodic information and semantic labels," *IEEE Transactions on Affective Computing*, vol. 2, no. 1, pp. 10–21, 2015.
- [5] M. H. Sigari, S. A. Sureshjani, and H. Soltanian-Zadeh, "Sport video classification using an ensemble classifier," in *Proceedings of 7th Iranian Conference on Machine Vision and Image Processing*, 2011, pp. 2–5.
- [6] B. Zhang, "Reliable face recognition by random subspace support vector machine ensemble," in *Proceedings of the 2012 International Conference on Machine Learning and Cybernetics*, 2012, vol. 1, pp. 415–420.
- [7] A. Chharia and R. K. Gupta, "Email classifier: An ensemble using probability and rules," in *Proceedings of 6th International Conference on Contemporary Computing*, 2013, pp. 130–136.

- [8] A. Margosian and J. Abouei, "Ensemble-based classifiers for cancer classification using human tumor microarray data," in *Proceedings of the 21st International Conference on Electrical Engineering (ICEE)*, 2013, pp. 1–6.
- [9] R. P. A. Pramesti, Y. Herdiyeni, and A. S. Nugroho, "Weighted Ensemble Classifier for Plant Leaf Identification," *TELKOMNIKA*, vol. 16, no. 3, pp. 1386–1393, 2018.
- [10] L. Deshpande and M. N. Rao, "Concept Drift Identification using Classifier Ensemble Approach," *International Journal of Electrical and Computer Engineering (IJECE)*, vol. 8, no. 1, pp. 19–25, 2018.
- [11] M. Kartiwi, T. S. Gunawan, T. Arundina, and M. A. Omar, "Sukuk Rating Prediction using Voting Ensemble Strategy," *International Journal of Electrical and Computer Engineering (IJECE)*, vol. 8, no. 1, pp. 299–303, 2018.
- [12] D. Hernández-Lobato, G. Martínez-Muñoz, and A. Suárez, "How large should ensembles of classifiers be?," *Pattern Recognition*, vol. 46, no. 5, pp. 1323–1336, 2013.
- [13] P. Du, J. Xia, W. Zhang, K. Tan, Y. Liu, and S. Liu, "Multiple classifier system for remote sensing image classification: A review," *Sensors*, vol. 12, no. 4, pp. 4764–4792, 2012.
- [14] S. Li, Z. Zheng, Y. Wang, C. Chang, and Y. Yu, "A new hyperspectral band selection and classification framework based on combining multiple classifier," *Pattern Recognition Letters*, pp. 1–8, 2016.
- [15] L. Rokach, "Ensemble-based classifiers," *Artificial Intelligence Review*, vol. 33, no. 1–2, pp. 1–39, 2010.
- [16] O. Maimon and L. Rokach, *Decomposition methodology for knowledge discovery and data mining*. Berlin Heidelberg: Springer-Verlag., 2005.
- [17] H. Ahn, H. Moon, M. J. Fazzari, N. Lim, J. J. Chen, and R. L. Kodell, "Classification by ensembles from random partitions of high-dimensional data," *Computational Statistics and Data Analysis*, vol. 51, no. 12, pp. 6166–6179, 2007.
- [18] B. Crawford, R. Soto, E. Monfroy, C. Castro, W. Palma, and F. Paredes, "A hybrid soft computing approach for subset problems," *Mathematical Problems in Engineering*, vol. 2013, 2013.
- [19] G. Chicco, "Ant colony system-based applications to electrical distribution system optimization," in *Ant Colony Optimization - Methods and Applications*, A. Otsfeld, Ed. Rijeka, Croatia: InTechOpen, 2011, pp. 237–262.
- [20] R. Ribeiro and F. Enembreck, "A sociologically inspired heuristic for optimization algorithms: A case study on ant systems," *Expert Systems with Applications*, vol. 40, no. 5, pp. 1814–1826, 2013.
- [21] E. Cetin, "The solution of crew scheduling problem with set partitioning model," *Aviation and Space Technology*, vol. 3, no. (4), pp. 47–54, 2008.
- [22] Abdullah and K. R. Ku-mahamud, "Ant system-based feature set partitioning algorithm for classifier ensemble construction," *International Journal of Soft Computing*, vol. 11, no. 3, pp. 176–184, 2016.
- [23] L. Hansen and P. Salamon, "Neural network ensembles," *IEEE Transaction on Pattern Analysis and Machine Intelligence*, vol. 12, no. 10, pp. 993–1001, 1990.
- [24] A. Hajdu, L. Hajdu, A. Jonas, L. Kovacs, and H. Toman, "Generalizing the majority voting scheme to spatially constrained voting," *IEEE Transactions on Image Processing*, vol. 22, no. 11, pp. 4182–4194, 2013.
- [25] M. P. Ponti, "Combining classifiers: From the creation of ensembles to the decision fusion," in *Proceedings of 24th SIBGRAPI Conference on Graphics, Patterns, and Images Tutorials, SIBGRAPI-T 2011*, 2011, no. Icmc, pp. 1–10.
- [26] W. Wang, Y. Zhu, X. Huang, D. Lopresti, Z. Xue, R. Long, S. Antani, and G. Thoma, "A Classifier Ensemble Based on performance level estimation," in *International Symposium on Biomedical Imaging: From Nano to Macro*, 2009, pp. 342–345.
- [27] S. Hamzeloo, H. Shahparast, and M. Zolghadri Jahromi, "A novel weighted nearest neighbor ensemble classifier," in *Proceedings of the 16th International Symposium on Artificial Intelligence and Signal Processing*, 2012, pp. 413–416.
- [28] R. M. Valdovinos and J. S. Sánchez, "Combining multiple classifiers with dynamic weighted voting," in *Proceedings of the 4th International Conference on Hybrid Artificial Intelligence Systems (HAIS '09)*, 2009, pp. 510–516.
- [29] R. Polikar, "Ensemble based systems in decision making," *Circuits and Systems Magazine, IEEE*, vol. 6, no. 3, pp. 21–45, 2006.
- [30] X. Mu, J. Lu, P. Watta, and M. H. Hassoun, "Weighted voting-based ensemble classifier with application to human face recognition and voice recognition," in *Proceedings of International Joint Conference on Neural Networks*, 2009, pp. 2168–2171.
- [31] J. Sun and H. Li, "Listed companies' financial distress prediction based on weighted majority voting combination of multiple classifiers," *Expert Systems with Applications*, vol. 35, no. 3, pp. 818–827, 2008.
- [32] P. M. Jena and S. R. Nayak, "Angular Symmetric Axis Constellation Model for Off-line Odia Handwritten Characters Recognition," *International Journal of Advances in Applied Sciences (IJAAS)*, vol. 7, no. 3, pp. 265–272, 2018.
- [33] R. Kohavi, "A study of cross-validation and bootstrap for accuracy estimation and model selection," in *Proceedings of the 14th International Joint Conference on Artificial Intelligence*, 1995, no. 2, pp. 1137–1145.
- [34] M. Wozniak, "Classifier fusion based on weighted voting - Analytical and experimental results," *2008 Eighth International Conference on Intelligent Systems Design and Applications*, pp. 687–692, 2008.
- [35] M. Wozniak, "Evolutionary approach to produce classifier ensemble based on weighted voting," in *Proceedings of World Congress on Nature and Biologically Inspired Computing, NaBIC.*, 2009, pp. 648–653.
- [36] N. Suguna and K. Thanushkodi, "An Improved k-Nearest Neighbor Classification Algorithm Using Shared Nearest Neighbor Similarity," *International Journal of Computer Science*, vol. 7, no. 4, pp. 18–21, 2010.
- [37] M. A. Tahir and J. Smith, "Creating diverse nearest-neighbour ensembles using simultaneous metaheuristic feature selection," *Pattern Recognition Letters*, vol. 31, no. 11, pp. 1470–1480, 2010.
- [38] T. Koon, C. Neo, and D. Ventura, "A direct boosting algorithm for the k -nearest neighbor classifier via local

- warping of the distance metric,” *Pattern Recognition Letters*, vol. 33, no. 1, pp. 92–102, 2012.
- [39] B. Verma and A. Rahman, “Cluster Oriented Ensemble Classifier: Impact of Multicluster Characterization on Ensemble Classifier Learning,” *IEEE Transactions on Knowledge and Data Engineering*, vol. 24, no. 4, pp. 605–618, 2012.
- [40] H. He, D. Han, and Y. Yang, “Design of multiple classifier systems based on evidential neural network,” in *Chinese Control Conference*, 2017, pp. 5496–5501.

## BIOGRAPHIES OF AUTHORS



**Abdullah Husin:** He received his Sarjana and Master degrees in Computer Science from Gadjah Mada University Yogyakarta Indonesia. Now, he is working on the Bachelor’s degree in Information System Program Study, Engineering and Computer Science Faculty, Universitas Islam Indragiri Indonesia. He received his Ph.D degree in Computer Science in 2015 from Universiti Utara Malaysia (UUM). His research interest includes Data Mining, Optimization Algorithm, Multimedia Database and Pattern Recognition and Classification.



**Ku Ruhana Ku-Mahamud:** She holds a Bachelor in Mathematical Sciences and a Masters degree in Computing, both from Bradford University, United Kingdom in 1983 and 1986 respectively. Her PhD in Computer Science was obtained from Universiti Pertanian Malaysia in 1994. As an academic, her research interests include ant colony optimization, pattern classification and vehicle routing problem.