

TecVoISA: The Development of an Intelligent Sentinel-1 Data Exploitation System

Homa Ansari, Francesco De Zan, Sina Montazeri, Alessandro Parizzi, Robert Shau,
Nan Ge, René Mania, Simone Cesca, Mahmud Haghshenas Haghighi,
Mahdi Motagh, Thomas Walter, Xiaoxiang Zhu, Michael Eineder

German Aerospace Center (DLR) SAR signal processing
German Aerospace Center (DLR) EO Data Science
German Research Center for Geoscience (GFZ)
Technical University of Munich (TUM)



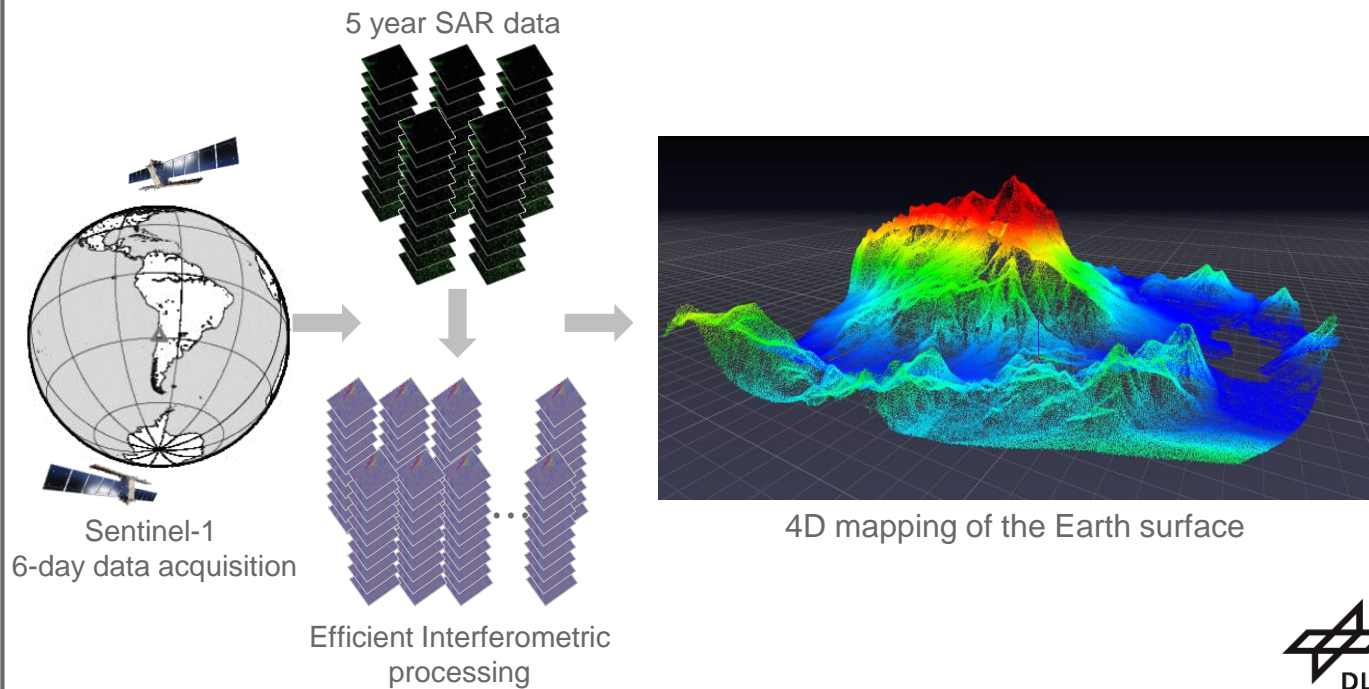
Knowledge for Tomorrow



TecVoISA: monitoring Tectonics and Volcanoes of South America

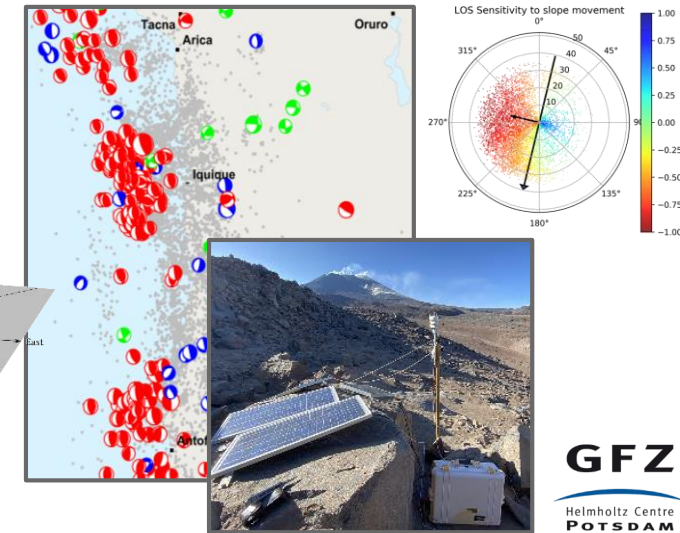
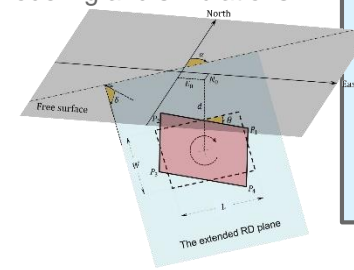
SAR Signal Processing

4D mapping of the Earth surface from Sentinel-1



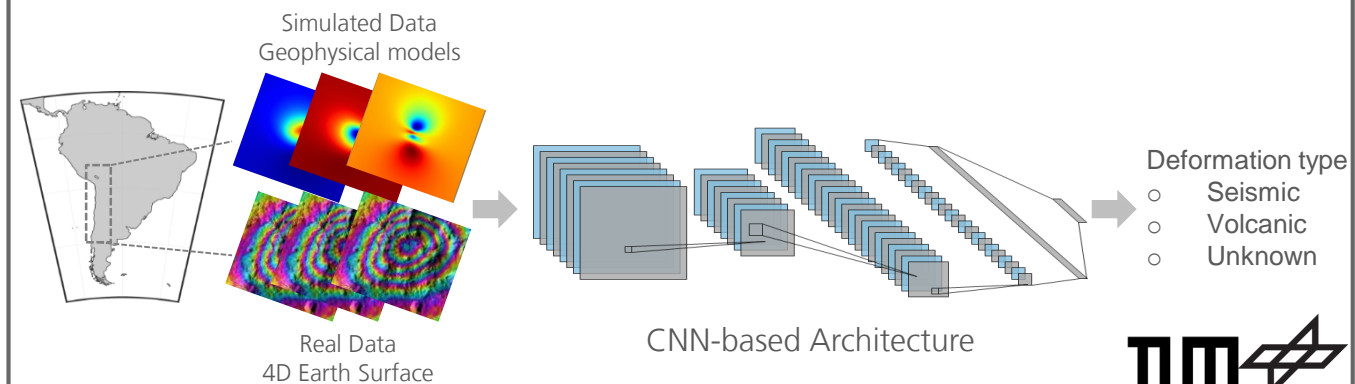
Research Center for Geosciences Geophysical expertise

- Physical signal interpretation
- Field campaign
- In situ measurements
- Geophysical modeling and simulations

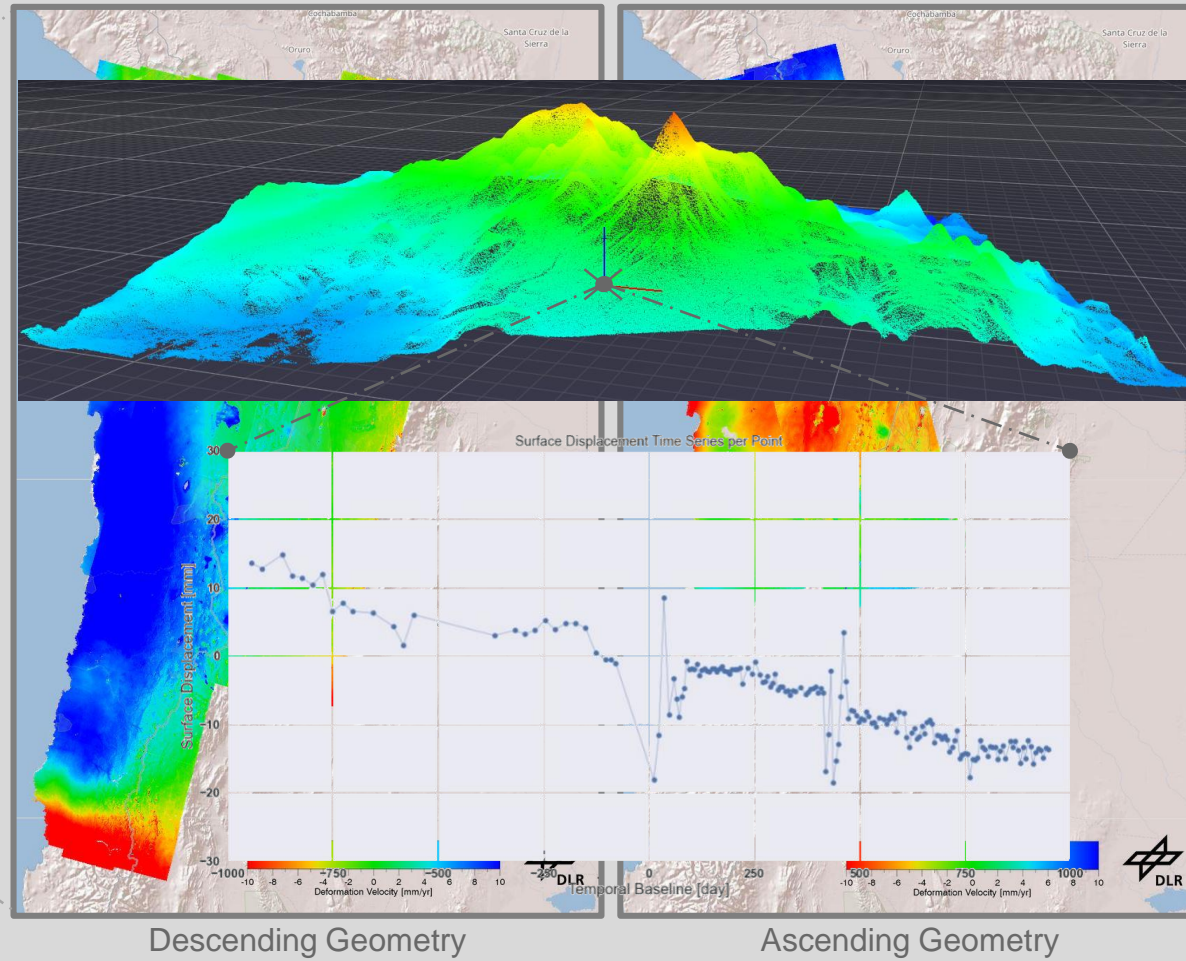


EO Data Science

Artificial Intelligence: Efficient information extraction from the 4D data



Earth Surface Displacement Retrieval



5 Year SAR Data
 Sentinel-1 A/B
 2014 – 2019
 Central Volcanic Zone of the Andes

Retrieved Data Products

Surface displacement velocity maps:
 precision*: 1 mm/yr at large scale

4D point clouds:
 temporal evolution of the Earth surface

*Algorithms to ensure **high-precision**:

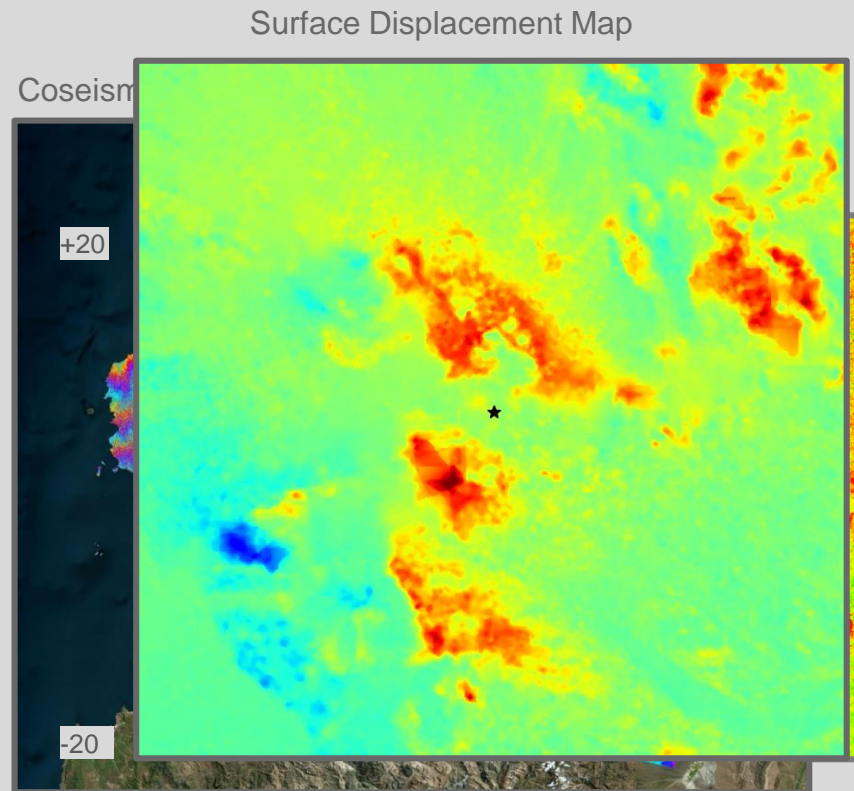
Ansari et. al. "Study of Systematic Bias in Measuring Deformation with SAR Interferometry", IEEE-TGRS 2020

Parizzi et. al. "Validation of InSAR Large Scale Deformation Measurements Performance: the Impact of Model-Based Tropospheric Delay Corrections", submitted to IEEE-TGRS

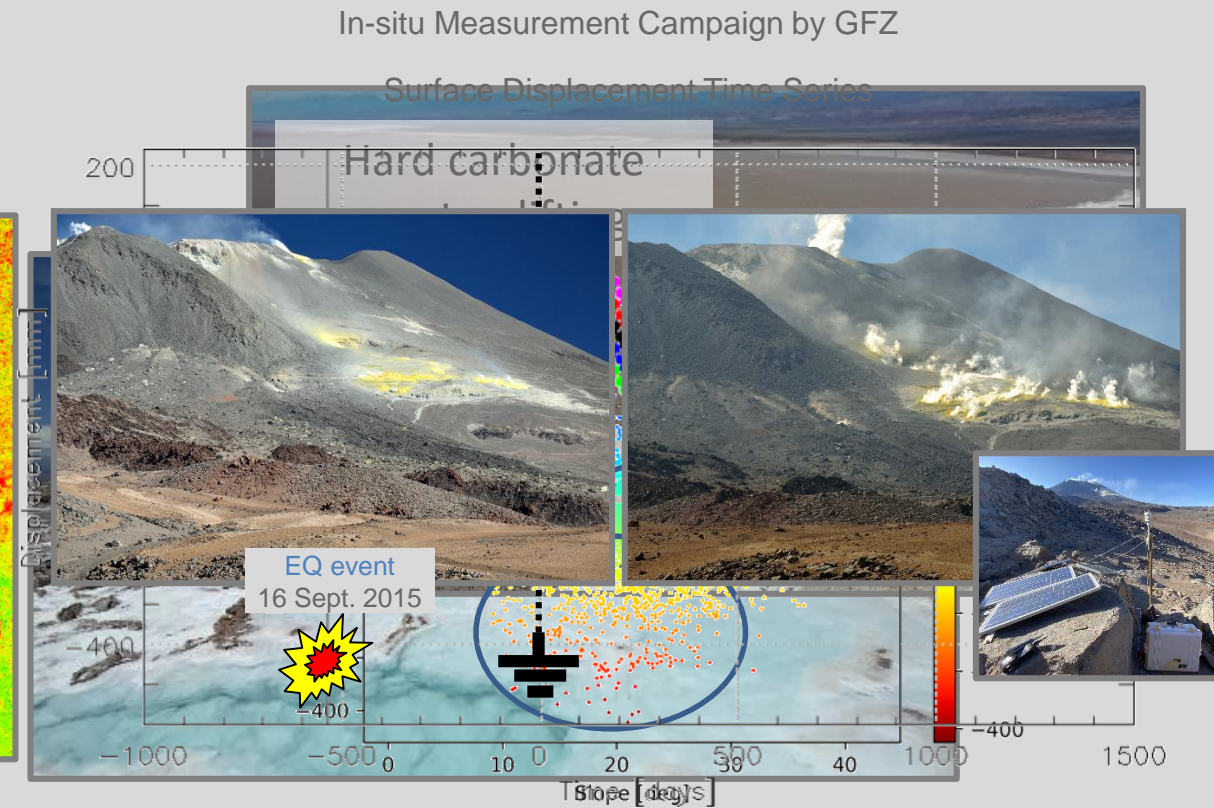
Investigation of Various Signal Sources



📍 Andes - Lastarria Volcano
Volcanic deformation



📍 Chile - Atacama Salt Pans
Lithium mining activities



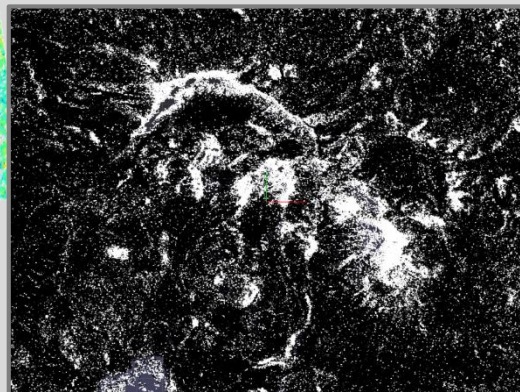
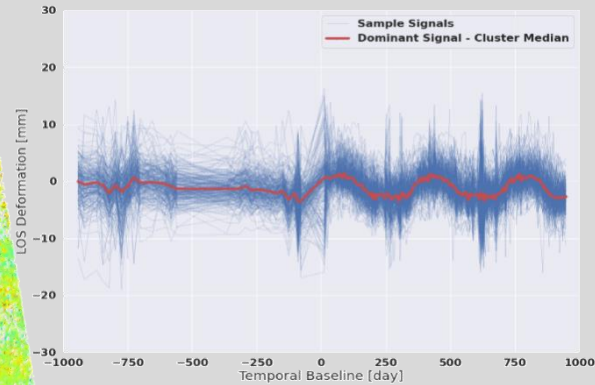
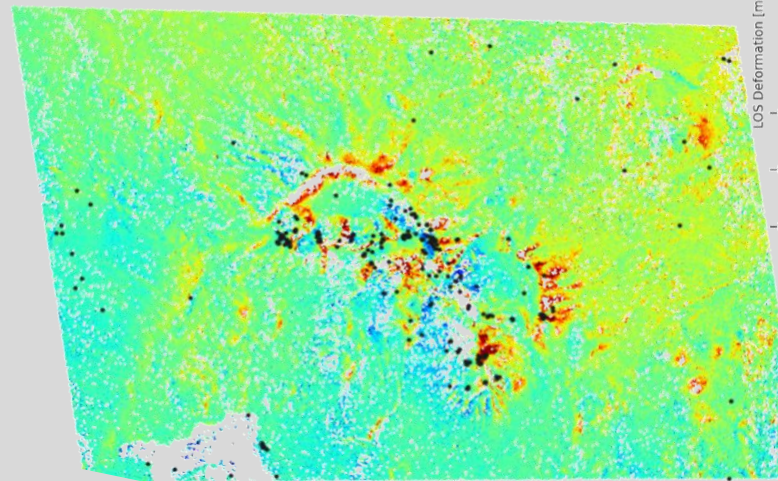
📍 Argentina - Tebenquicho
Solifluction signal

📍 Chile – Illapel
2015 8.3 Mw Earthquake
and aftershocks

AI for efficient information extraction from Terabytes of Data

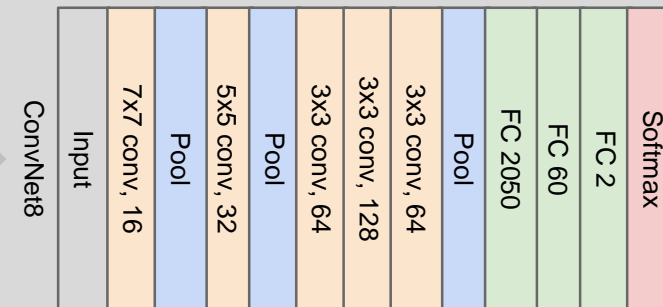
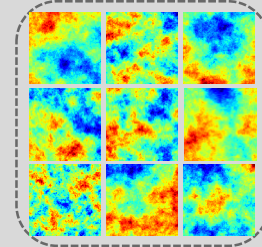
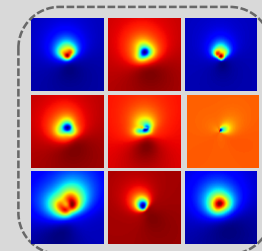
Unsupervised Machine Learning:

- Clustering similar signals
- Detection of non linear transient signals
- Detection of solifluction signal surrounding the volcanoes

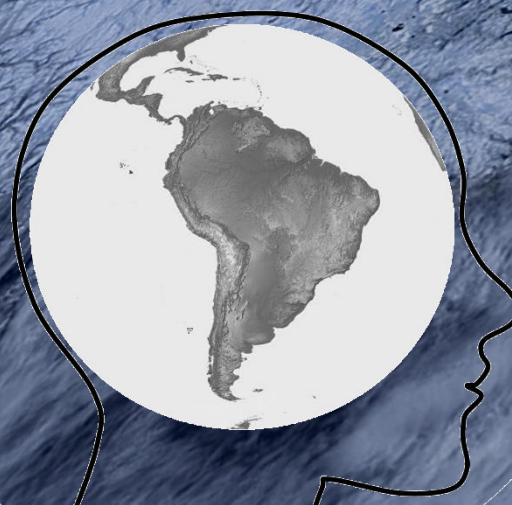
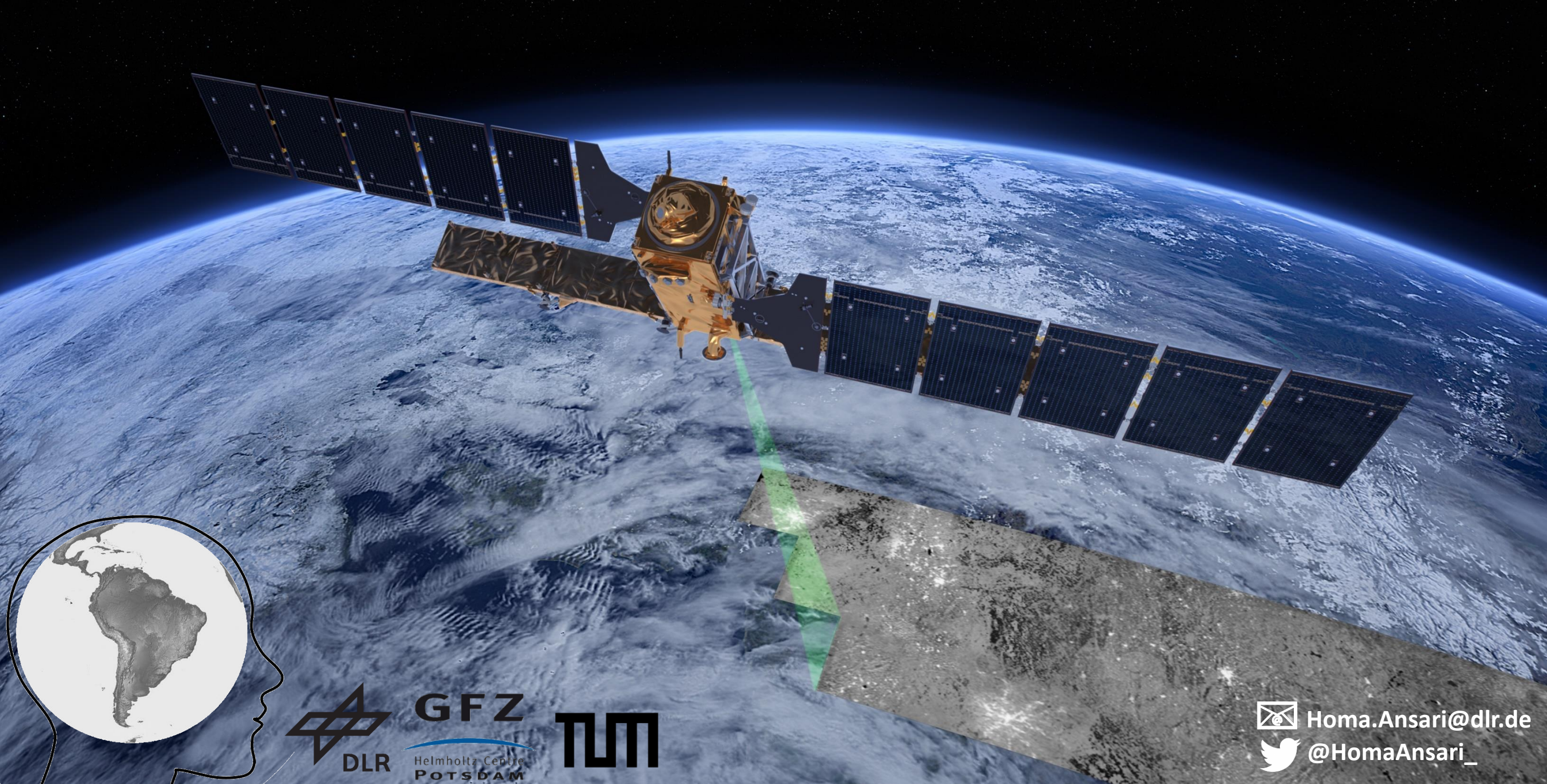


Supervised Deep Learning:

- Training CNNs using simulated data
- Classification of deformation maps
- Anomaly detection



- Deformation type
- Seismic
 - Volcanic
 - Unknown



 Homa.Ansari@dlr.de
 [@HomaAnsari_](https://twitter.com/HomaAnsari_)