



University of Pennsylvania
ScholarlyCommons

Research Briefs

Leonard Davis Institute of Health Economics


6-11-2019

Lower Health Care Use Among Elderly Patients Residing with Another Adult

Caroline Carlin

Guy David
University of Pennsylvania

Follow this and additional works at: https://repository.upenn.edu/ldi_researchbriefs

 Part of the [Geriatrics Commons](#), [Health Services Administration Commons](#), and the [Health Services Research Commons](#)

Recommended Citation (OVERRIDE)

This paper is posted at ScholarlyCommons. https://repository.upenn.edu/ldi_researchbriefs/61
For more information, please contact repository@pobox.upenn.edu.

Lower Health Care Use Among Elderly Patients Residing with Another Adult

Keywords

Medicare, health care, health care utilization, geriatrics, elderly, nursing home

Disciplines

Geriatrics | Health Services Administration | Health Services Research

Comments

License

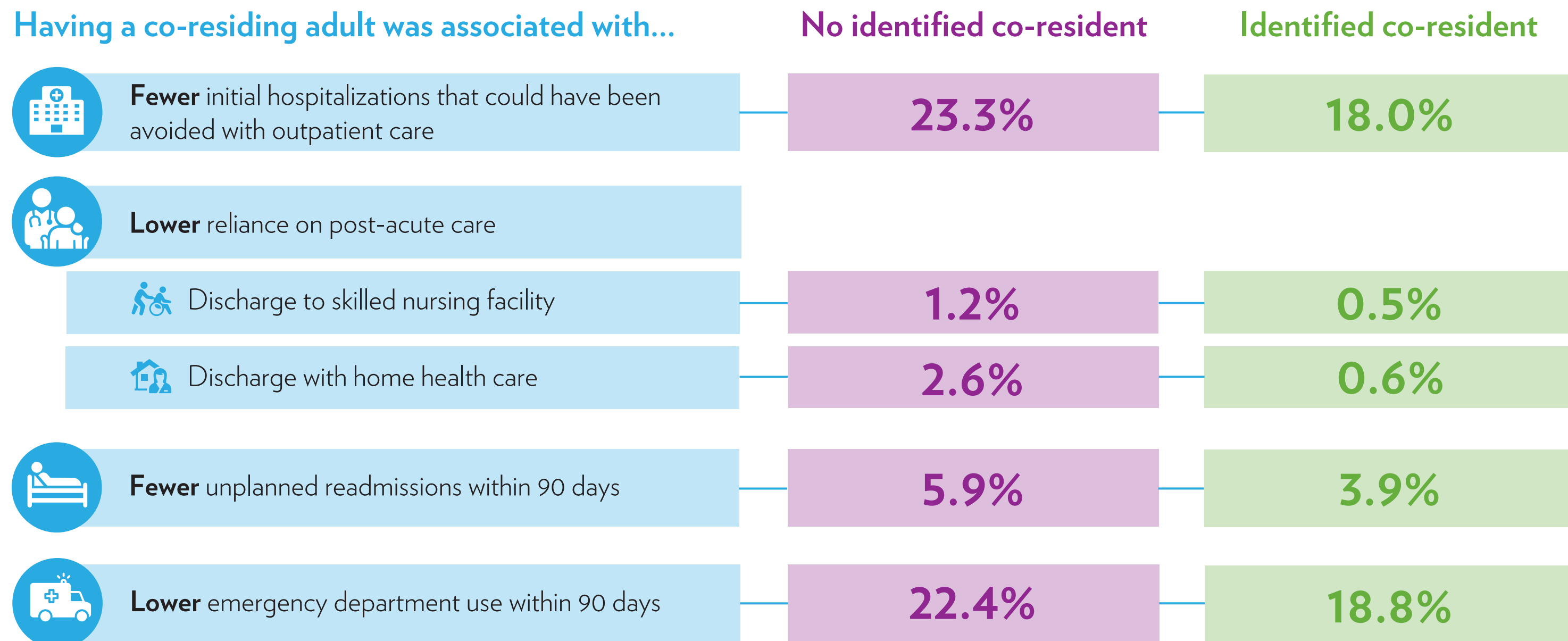


This work is licensed under a [Creative Commons Attribution-NonCommercial 4.0 International License](https://creativecommons.org/licenses/by-nc/4.0/).

LOWER HEALTH CARE USE AMONG ELDERLY PATIENTS RESIDING WITH ANOTHER ADULT

Study population: 10,141 Medicare patients with an initial hospitalization in 2014-2015, about half of whom have another adult in the home with the same insurance (usually a spouse).

Having a co-residing adult was associated with...



After adjusting for demographic differences, having another adult in the home was associated with minimal savings of \$124 for each discharge. When applied to all Medicare discharges in 2015, this amounts to an estimated **\$514 MILLION** in Medicare savings.

The demand for both formal and informal caregiving will continue to grow as the population ages. Integration of caregiver availability into discharge planning will be critical to the efficient delivery of care.