



THE UNIVERSITY *of* EDINBURGH

Edinburgh Research Explorer

Reporting incidental coronary, aortic valve and cardiac calcification on non-gated thoracic computed tomography, a consensus statement from the BSCI/BSCCT and BSTI

Citation for published version:

Williams, MC, Abbas, A, Tirr, E, Alam, S, Nicol, E, Shambrook, J, Schmitt, M, Morgan-Hughes, GJ, Stirrup, J, Holloway, B, Gopalan, D, Deshpande, A, Weir-McCall, J, Agrawal, B, Rodrigues, JCL, Brady, AJB, Roditi, G, Robinson, G & Bull, R 2020, 'Reporting incidental coronary, aortic valve and cardiac calcification on non-gated thoracic computed tomography, a consensus statement from the BSCI/BSCCT and BSTI', *British Journal of Radiology*. <https://doi.org/10.1259/bjr.20200894>

Digital Object Identifier (DOI):

[10.1259/bjr.20200894](https://doi.org/10.1259/bjr.20200894)

Link:

[Link to publication record in Edinburgh Research Explorer](#)

Document Version:

Publisher's PDF, also known as Version of record

Published In:

British Journal of Radiology

General rights

Copyright for the publications made accessible via the Edinburgh Research Explorer is retained by the author(s) and / or other copyright owners and it is a condition of accessing these publications that users recognise and abide by the legal requirements associated with these rights.

Take down policy

The University of Edinburgh has made every reasonable effort to ensure that Edinburgh Research Explorer content complies with UK legislation. If you believe that the public display of this file breaches copyright please contact openaccess@ed.ac.uk providing details, and we will remove access to the work immediately and investigate your claim.



Received:
21 July 2020

Revised:
05 October 2020

Accepted:
10 October 2020

© 2020 The Authors. Published by the British Institute of Radiology under the terms of the Creative Commons Attribution 4.0 Unported License <http://creativecommons.org/licenses/by/4.0/>, which permits unrestricted use, distribution and reproduction in any medium, provided the original author and source are credited.

Cite this article as:

Williams MC, Abbas A, Turr E, Alam S, Nicol E, Shambrook J, et al. Reporting incidental coronary, aortic valve and cardiac calcification on non-gated thoracic computed tomography, a consensus statement from the BSCI/BSCCT and BSTI. *Br J Radiol* 2020; **93**: 20200894.

GUIDELINES & RECOMMENDATIONS

Reporting incidental coronary, aortic valve and cardiac calcification on non-gated thoracic computed tomography, a consensus statement from the BSCI/BSCCT and BSTI

^{1,2}MICHELLE CLAIRE WILLIAMS, MBChB PhD BSc BA FRCR MRCP, ³AUSAMI ABBAS, ⁴ERICA TIRR, ⁴SHIRJEL ALAM, ^{5,6}EDWARD NICOL, ³JAMES SHAMBROOK, ⁴MATTHIAS SCHMITT, ⁷GARETH MORGAN HUGHES, ⁸JAMES STIRRUP, ⁹BEN HOLLOWAY, ¹⁰DEEPA GOPALAN, ¹¹APARNA DESHPANDE, ¹²JONATHAN WEIR-MCCALL, ¹³BOBBY AGRAWAL, ¹⁴JONATHAN C L RODRIGUES, ^{15,16}ADRIAN J B BRADY, ¹⁵GILES RODITI, ¹⁴GRAHAM ROBINSON and ¹⁷RUSSELL BULL

¹University of Edinburgh/British Heart Foundation Centre for Cardiovascular Science, Edinburgh, UK

²Edinburgh Imaging facility QMRI, University of Edinburgh, Edinburgh, UK

³University Hospital Southampton, Southampton, UK

⁴Manchester University NHS Foundation Trust, Manchester, UK

⁵Departments of Cardiology and Radiology, Royal Brompton and Harefield NHS Foundation Trust, London, UK

⁶Faculty of Medicine, National Heart and Lung Institute, Imperial College, London, UK

⁷Plymouth Hospitals NHS Trust, Derriford Road, Plymouth, UK

⁸Royal Berkshire Hospital NHS Foundation Trust, Craven Road, Reading, UK

⁹Queen Elizabeth Hospital, Birmingham, UK

¹⁰Imperial College London & Cambridge University Hospital, Cambridge, UK

¹¹Glenfield Hospital, University Hospitals of Leicester, Leicester, UK

¹²University of Cambridge School of Clinical Medicine, Cambridge, UK

¹³Royal Papworth Hospital NHS Foundation Trust, Cambridge, UK

¹⁴Royal United Hospitals Bath NHS Foundation Trust, Bath, UK

¹⁵Glasgow Royal Infirmary, 16 Alexandra Parade, Glasgow, UK

¹⁶University of Glasgow, University Avenue, Glasgow, UK

¹⁷Royal Bournemouth Hospital, Castle Lane East, Bournemouth, UK

Address correspondence to: Dr Michelle Claire Williams

E-mail: michelle.williams@ed.ac.uk

ABSTRACT

Incidental coronary and cardiac calcification are frequent findings on non-gated thoracic CT. We recommend that the heart is reviewed on all CT scans where it is visualised. Coronary artery calcification is a marker of coronary artery disease and it is associated with an adverse prognosis on dedicated cardiac imaging and on non-gated thoracic CT performed for non-cardiac indications, both with and without contrast. We recommend that coronary artery calcification is reported on all non-gated thoracic CT using a simple patient-based score (none, mild, moderate, severe). Furthermore, we recommend that reports include recommendations for subsequent management, namely the assessment of modifiable cardiovascular risk factors and, if the patient has chest pain, assessment as per standard guidelines. In most cases, this will not necessitate additional investigations. Incidental aortic valve calcification may also be identified on non-gated thoracic CT and should be reported, along with ancillary findings such as aortic root dilation. Calcification may occur in other parts of the heart including mitral valve/annulus, pericardium and myocardium, but in many cases these are an incidental finding without clinical significance.

INTRODUCTION

Cardiovascular disease is one of the leading causes of death in the western world, with coronary artery disease accounting for >10% of all deaths in the UK in 2017.¹ The burden of cardiovascular disease in patients investigated for

non-cardiovascular disease is high, with almost the same number of deaths attributable to cardiovascular disease as lung cancer in the National Lung Screening Trial.² Identification of coronary artery disease enables early intervention targeted against modifiable risk factors, which can

Figure 1. Recommendations for the assessment of cardiac calcification on routine thoracic CT

- 1 The heart should be reviewed on all CT scans where it is covered on the imaged field of view.
- 2 The presence of coronary artery calcification should be identified and quantified using a simple per patient visual quantification (none, mild, moderate, severe).
- 3 If coronary artery calcification is identified simple recommendations regarding further assessment/management should be provided in the report text
- 4 The presence of aortic valve calcification should be identified and simple visual quantification (none, mild, moderate, severe) should be performed.
- 5 If aortic valve calcification is identified the diameter of the aortic root and ascending thoracic aorta should also be reviewed and simple recommendations provided in the report text.
- 6 The presence of other calcifications in the heart should be identified and reported.

significantly reduce future coronary events.³ Diagnostic tools that provide further opportunities to detect coronary artery disease, therefore, have the potential to reduce the burden of associated morbidity and mortality.

Given the >5.5 million CT scans were performed in the UK in 2018–19, we estimate that ~950 000 thoracic CT scans are performed annually in the UK.⁴ A significant increase in the number of low-dose chest CT scans in the UK is expected with the expansion of the Targeted Lung Health Checks Program from 2020.⁵ In patients undergoing lung cancer screening, one-third of patients are at a high cardiovascular risk but are not taking statin therapy.⁶ The heart is an important component of all imaging involving the chest. Cardiac pathology may be asymptomatic or provide an explanation for the patient's presentation. Cardiac and respiratory diseases share risk factors, such as smoking, and pathogenic mechanisms, such as inflammation. Furthermore, review of the heart may identify cardiac sequelae of lung disease.

The aim of this joint guideline from the British Society of Cardiovascular Imaging/British Society of Cardiac Computed Tomography (BSCI/BSCCT) and British Society of Thoracic Imaging (BSTI) is to provide guidance for radiologists regarding the reporting of incidental coronary and cardiac calcification on routine thoracic CT performed for non-cardiac indications without electrocardiogram (ECG) gating (Figures 1 and 2). In particular, we recommend the reporting of coronary artery calcification (CAC) when visualised on all CT scans. We also provide guidance on how to classify the severity of CAC on a per patient basis and aim to increase the awareness of the prognostic implications of CAC.

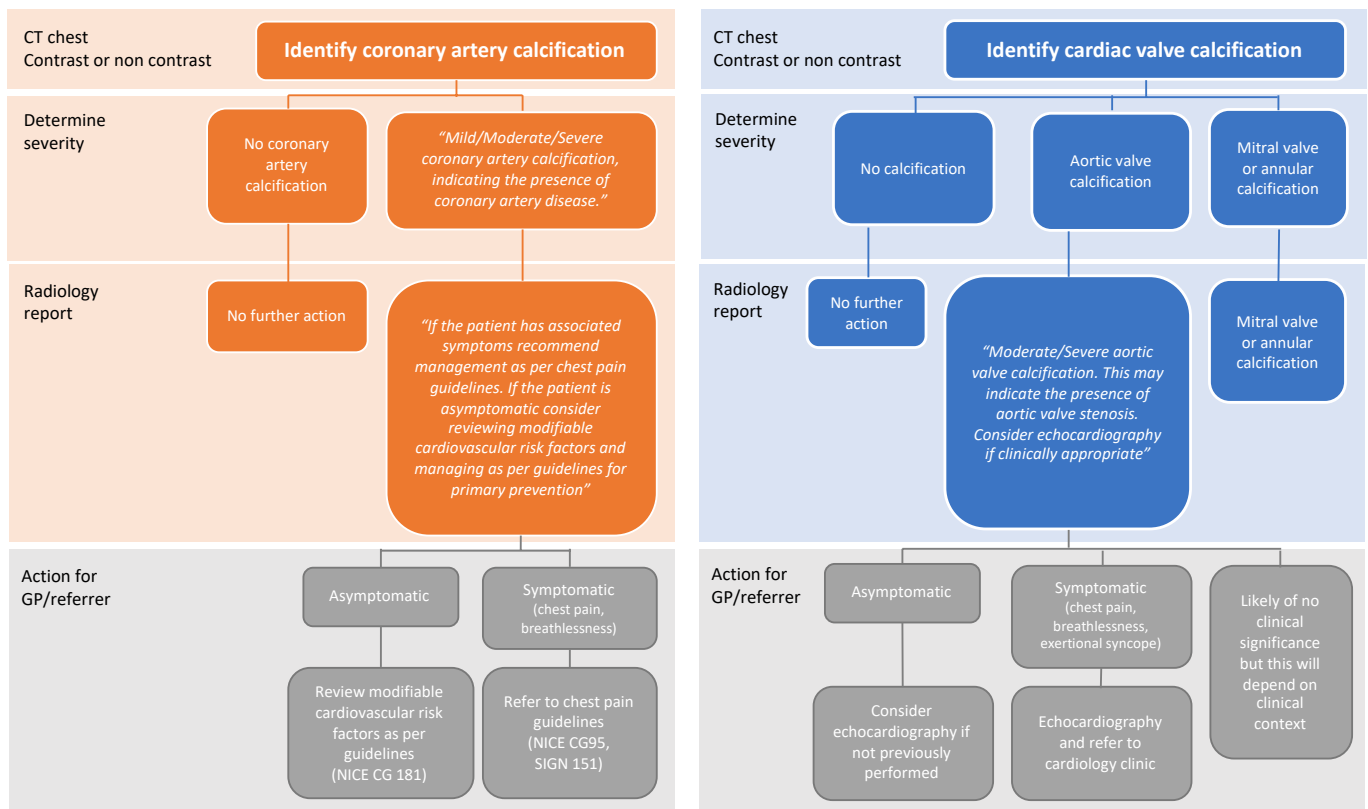
Recommendation 1: the heart should be reviewed on all CT scans where it is covered on the imaged field of view.

CORONARY ARTERY CALCIFICATION

CAC can be identified as high attenuation material in the path of a coronary artery. CAC is an established biomarker for the burden of atherosclerosis^{7,8} with an increase in CAC associated with increased risk of cardiovascular events in symptomatic and asymptomatic patients.^{9–16} It is not a method to identify the severity of coronary artery stenoses, and significant CAC may be present in the absence of flow-limiting coronary artery stenoses. Furthermore, coronary artery disease may be present in the absence of CAC. A high burden of CAC may be present in patients classified as “low risk” by traditional risk factor scoring systems and conversely absent in patients classified at “high risk”. Combining CAC with traditional risk factors can therefore improve coronary artery disease risk stratification^{10,17} and appropriately target statin therapy.¹⁸ In addition to the early detection of coronary artery disease, the visualisation of CT coronary artery plaque by patients has been shown to improve adherence with lifestyle modifications and medications.^{19–21}

CAC is formally evaluated using dedicated non-contrast ECG-gated cardiac CT, performed with 3 mm contiguous slices and a tube voltage of 120 kVp. The Agatston scoring system is the most widely used method to assess CAC, although alternatives such as the mass and volume scores are available.²² Agatston scoring is performed using semi-automated software to identify areas of calcification (above 130 Hounsfield units), which are then weighted based on the maximum attenuation density and summed.²³ Patients may then be classified into risk groups, with CAC score 0 Agatston units (AU) (very low risk), 1–99 AU (low risk), 100–299 AU (moderate risk), and ≥300 AU (high risk).²⁴ Asymptomatic patients with an Agatston score >300 AU have a sevenfold increase in the risk of myocardial infarction or coronary heart disease death compared to patients with no CAC.¹⁰

Figure 2. Flow diagram for the assessment of coronary artery calcification and cardiac valve calcification on routine thoracic CT.



Coronary artery calcification on non-gated thoracic CT

CAC can be identified on non-gated thoracic CT with an excellent diagnostic accuracy compared to gated CT.^{25,26} However, CAC is frequently not reported on non-gated thoracic CT,²⁷⁻³⁰ and a recent survey demonstrated only 17% of non-cardiothoracic radiologists in Canada were aware of the correlation between CAC scores on gated and non-gated thoracic CT.³¹ The incidence of CAC on non-gated thoracic CT performed for non-cardiac indications varies from 26 to 93% depending on the population assessed.^{28-30,32-34} It is associated with poorer prognosis in a variety of patient cohorts including patients with chronic obstructive pulmonary disease, pulmonary embolism, cancer and in unselected patients undergoing thoracic CT.^{32,35-39} In the National Lung Screening Trial, CAC was associated with an increased risk of coronary artery disease-related death, with a CAC score of 100–1000 AU associated with a fourfold increase, and CAC score of >1000 AU associated with a sevenfold increase compared to patients without CAC.³⁵

Reporting coronary calcification

While conventional Agatston scoring remains the gold-standard assessment, it requires dedicated software and training. A number of semi-quantitative ordinal scoring systems have been developed on a per segment, per vessel or per patient basis.^{35,40,41} These correlate well with Agatston scoring and their prognostic utility have been established.^{35,41,42} However, these semi-quantitative ordinal scoring systems also take time and training to perform.

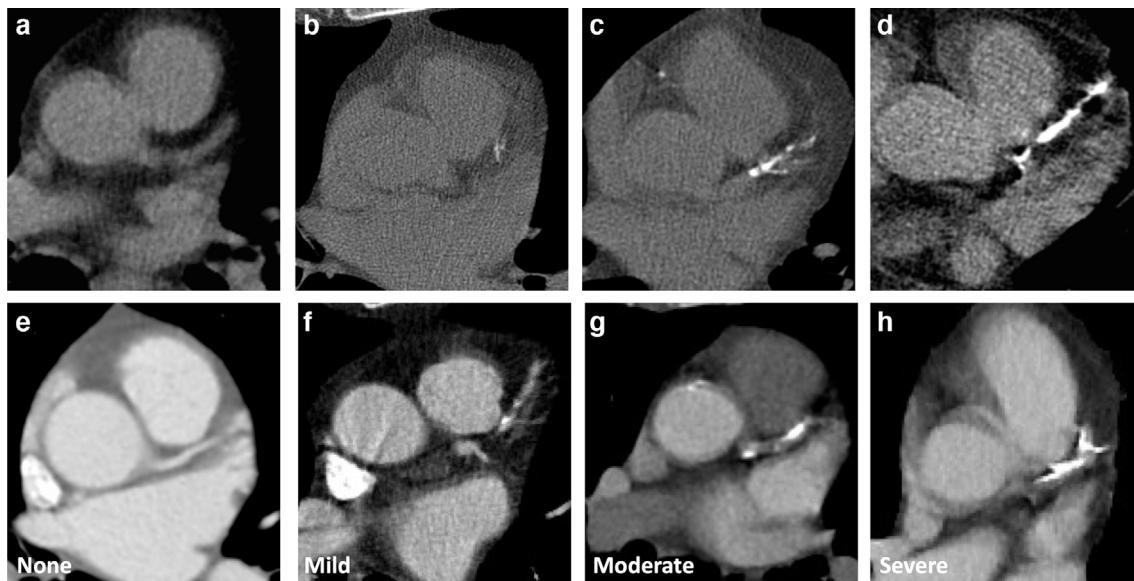
For non-gated thoracic CT in routine clinical practice, we therefore recommend a simple visual ordinal score performed on a whole patient basis. CAC is scored as None, Mild, Moderate or Severe on a whole patient basis, aiming to summarise the cumulative findings in all the coronary arteries (Figure 3, Supplementary Material 1). This can be applied to both non-contrast and contrast-enhanced images. It provides some stratification of patients into risk groups, while being rapid and easy to perform in clinical practice. In the National Lung Screening Trial the application of a per patient visual assessment identified patients at increased risk of subsequent coronary heart disease-related death, with good correlation with Agatston scoring, excellent interobserver agreement and acceptability to non-cardiac radiologists.³⁵

Recommendation 2: the presence of coronary artery calcification should be identified and quantified using a simple per patient visual quantification (none, mild, moderate, severe).

Recommendation 3: if coronary artery calcification is identified simple recommendations regarding further assessment/management should be provided in the report text.

CAC is a frequent finding on thoracic CT and is not necessarily an indication for further imaging or referral to a cardiologist. Instead, review of the clinical features and cardiovascular risk factors is recommended, usually by the general practitioner or referring physician. If patients are symptomatic with suspected

Figure 3. Coronary artery calcification severity. Images show different severity of coronary calcification from different patients on non-contrast (A-D) and contrast enhanced CT (E-H). Images show no coronary artery calcification (A, E) and mild (B, F), moderate (C, G) and severe (D, H) coronary artery calcification.



coronary artery disease. they should be managed as per standard guidelines (*e.g.* NICE CG95 2016 revision or SIGN 151). If they are asymptomatic, we recommend the referrer or general practitioner review and consider modifiable cardiovascular risk factors and manage these as per standard guidelines (*e.g.* NICE CG 181). For asymptomatic patients, there is no current evidence to support further imaging (ischaemia testing, CT coronary angiography or invasive coronary angiography).

It is important to remember that the request for imaging will often contain limited ancillary information regarding other pathologies or investigations. We, therefore, recommend that information regarding CAC is provided to the referring clinician so that they can take this into consideration with the overall management of the patient.

We do not recommend an upper age limit for the reporting of CAC, nor changing how CAC is reported based on age. The term “normal for age” should be avoided, as the risk of cardiovascular events increases in proportion to the amount of CAC in all age groups. In young patients (<40 years old), the presence of severe CAC is unusual, and the assessment of cardiovascular risk factors or symptoms is particularly important. Similarly, the presence of malignancy is not a reason to ignore CAC, as patients with malignancy are at a similar or increased risk of cardiac events

secondary to the disease process and cardiotoxic therapies. If previous coronary intervention is apparent on imaging, such as the presence of coronary artery stents or coronary artery bypass grafts, then assessment of incidental CAC is not required as the presence of coronary artery disease has already been established.

Suggested text that may be included in the summary of the report is as follows (Automatic insertion of dictation codes can be used to speed this process, [Table 1, Supplementary Material 1](#)).

“Mild/Moderate/Severe coronary artery calcification, indicating the presence of coronary artery disease. If the patient has associated symptoms recommend management as per chest pain guidelines (*e.g.* NICE CG95, SIGN 151). If the patient is asymptomatic consider reviewing modifiable cardiovascular risk factors and managing as per guidelines for primary prevention (*e.g.* NICE CG 181).”

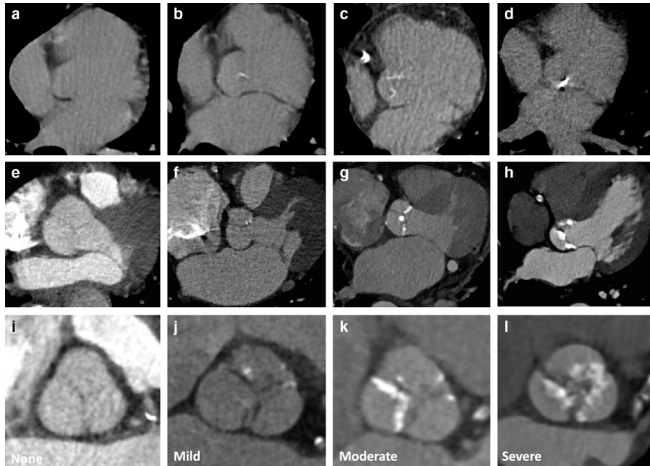
AORTIC VALVE CALCIFICATION

Aortic valve disease is the most common cardiac valve disease in the developed world, with moderate or severe aortic stenosis reported in ~5% of patients aged >75 years.^{43,44} The leading cause of aortic stenosis is calcific valvular degeneration, although

Table 1. Reporting recommendations for coronary artery and aortic valve calcification

	Suggested report text
Coronary artery calcification	Mild/Moderate/Severe coronary artery calcification, indicating the presence of coronary artery disease. If the patient has associated symptoms recommend management as per chest pain guidelines (<i>e.g.</i> NICE CG95, SIGN 151). If the patient is asymptomatic consider reviewing modifiable cardiovascular risk factors and managing as per guidelines for primary prevention (<i>e.g.</i> NICE CG 181).
Aortic valve calcification	Moderate/Severe aortic valve calcification. This may indicate the presence of aortic valve stenosis. Consider echocardiography if clinically appropriate.

Figure 4. Aortic valve calcification severity. Images show different severities of aortic valve calcification from different patients on non-contrast (A–D) and contrast enhanced CT (E–L). Multiplanar reformats can help to differentiate aortic valve calcification from annular or aortic calcification (I–L). Images show no calcification (A, E, I) and mild (B, F, J), moderate (C, G, K) and severe (D, H, L) aortic valve calcification.



underlying bicuspid aortic valve (BAV) disease is an important consideration in younger patients.^{43,44} Aortic valve calcification on CT is associated with the severity of aortic stenosis assessed using echocardiography^{45–47} and cut-off values for the aortic valve Agatston calcium score have been established to identify patients with severe stenosis (≥ 2065 AU for males and ≥ 1274 AU for females).^{48,49} Aortic valve calcification is also associated with the speed of disease progression and an increased risk of adverse events, including valve replacement and mortality.^{45,50,51} Aortic valve calcification is of particular utility in cases of low-flow low-gradient aortic stenosis where echocardiographic assessment can be challenging.⁵² Consequently, the assessment of aortic valve calcification on ECG-gated cardiac CT is now part of the 2017 ESC/EACTS valvular heart disease guidelines.⁵³ The clinical importance of mild aortic valve calcification is currently uncertain, and further evidence is required in this area. An exception to this however is patients with bicuspid aortic valves, where significant aortic stenosis can occur in the presence of mild aortic valve calcification.

Aortic valve calcification on non-gated thoracic CT
Calcification of the aortic valve can be identified as high attenuation material in the region of the aortic valve (Figure 4, Supplementary Material 1). Care should be taken to differentiate aortic valve calcification from calcification in the aortic root, mitral annulus or coronary arteries. The severity of aortic valve calcification on non-gated thoracic CT correlates with echocardiographic assessment of aortic stenosis.^{54–56} It is a common incidental finding, with its frequency depending on the age of the population and indication for imaging.^{55,57,58} However, the presence of aortic valve calcification is frequently not reported.⁵⁷

Reporting aortic valve calcification

Agatston scoring of aortic valve calcification can be performed on non-gated CT, with good correlation with echocardiographic parameters.^{46,59} However, this is time consuming, and requires dedicated software and training. We therefore recommend a simple visual ordinal assessment, where aortic valve calcification is described as None, Mild, Moderate or Severe (Figure 4). This is quick to perform and can be performed on contrast and non-contrast images. It also correlates well with formal Agatston calcium scoring and with echocardiographic findings.^{54,55}

The presence of moderate or severe aortic valve calcification may identify patients who require further assessment such as echocardiography. It may also be the cause of presenting symptoms such as dyspnoea. However, in many cases the presence of aortic valve disease will already be known, and echocardiography may have already been performed. For patients with aortic valve calcification, the diameter of the aortic root and ascending aorta should also be reviewed, on multiplanar reformats where possible, as post-stenotic dilation may be apparent even on non-contrast imaging. This is not an immediate indication for recall for contrast enhanced imaging, but should prompt further assessment of the severity of the aortic stenosis and further assessment of aortic anatomy may be required.

Suggested text that can be included in the summary of the report is as follows (Automatic insertion of dictation codes can be used to speed this process, Table 1):

“Moderate/Severe aortic valve calcification. This may indicate the presence of aortic valve stenosis. Consider echocardiography if clinically appropriate.”

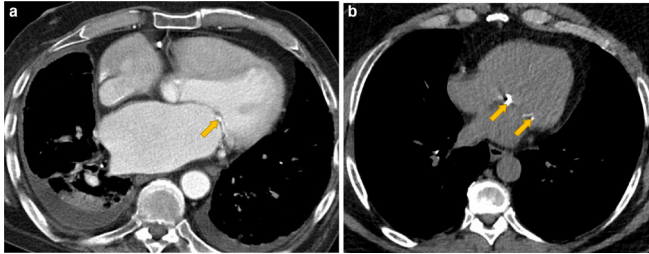
Recommendation 4: the presence of aortic valve calcification should be identified and visual quantification (none, mild, moderate, severe) should be performed.

Recommendation 5: if aortic valve calcification is identified the diameter of the aortic root and ascending thoracic aorta should also be reviewed and simple recommendations provided in the report text.

MITRAL, MYOCARDIAL AND PERICARDIAL CALCIFICATION

Calcification of the mitral leaflets or mitral annulus is a common incidental finding, occurring on approximately 8% of routine thoracic CT.⁶⁰ Mitral leaflet calcification is uncommon and may be associated with rheumatic heart disease or advanced renal impairment. It is usually subtle and limited to the leaflet tips, whereas mitral annular calcification can be extensive, usually demonstrating a curvilinear morphology in the posterior and outer ring of the valve (Figure 5). Patients with mitral leaflet calcification may require further assessment of mitral valve function whereas mitral annular calcification is rarely a therapeutic target. It is also important not to mistake mitral annular calcification for calcification in the left circumflex coronary artery. Mitral calcification can be graded on non-contrast and contrast-enhanced CT using a simple visual grading of None, Mild, Moderate or Severe (Figure 6).

Figure 5. Mitral leaflet and mitral annular calcification. Contrast enhanced CT (A) shows mitral leaflet calcification (A, yellow arrow) in a patient with mitral valve dysfunction and associated enlarged left atrium and pleural effusions. In comparison the non-contrast CT (B) shows mitral annular calcification (yellow arrows) without clinical sequelae.



Myocardial calcification (Figure 7) usually arises secondary to myocardial infarction, although other less common aetiologies include trauma, inflammation, neoplastic infiltration, hypertrophic cardiomyopathy or infection. Dystrophic myocardial calcification associated with infarction has a thin curvilinear appearance, with associated myocardial thinning or fatty infiltration. Calcification may also occur in the papillary muscles (Figure 7). Patients with chronic rheumatic mitral stenosis may also demonstrate left atrial wall calcification and patients with prior pulmonary vein ablation can develop calcification at the ablation sites. Furthermore, unusual calcification patterns may occur in patients with adult congenital heart disease, and a clinical history will be of required to interpret this. The significance of myocardial calcification will depend on the clinical context and indication for imaging.

Pericardial calcification (Figure 7) usually deposits at sites of previous pericardial inflammation or fibrosis. Conditions associated with pericardial calcification include infection (especially viral and tuberculosis), cardiac surgery, trauma, radiotherapy, rheumatic heart disease, collagen vascular disease, uraemic

Figure 6. Mitral calcification severity. Images show different severity of mitral calcification from different patients on non-contrast (A-D) and contrast CT (E-H). Images show no calcification (A, E) and mild (B, F), moderate (C, G) and severe (D, H) calcification.

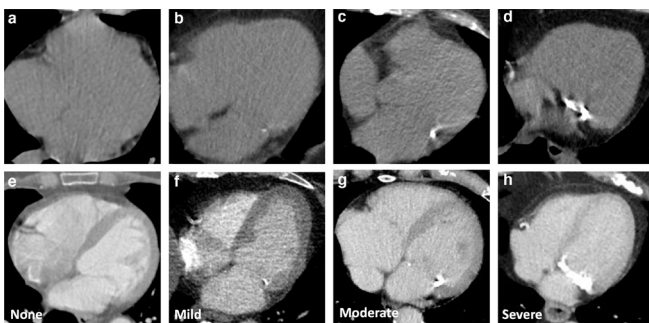
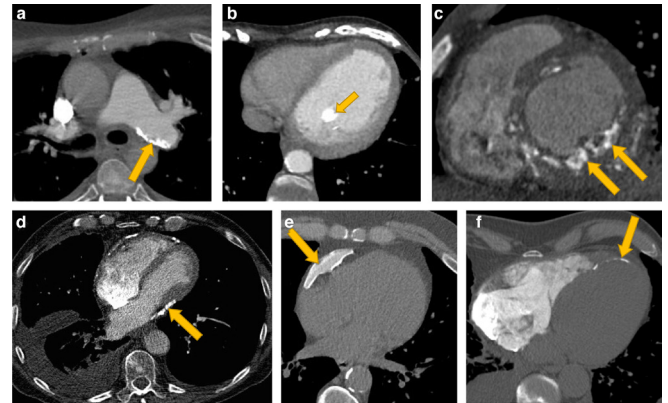


Figure 7. Examples of cardiac calcification in other sites including (A) pulmonary arteries, (B) papillary muscle, (C, F) myocardium and (D, E) pericardium. Image (C) shows myocardial calcification in renal failure and (F) shows myocardial calcification in an infarct. (E) shows an example of benign pericardial calcification, whereas (D) shows pericardial calcification associated with constrictive pericarditis with associated atrial enlargement, tubular ventricular morphology, pleural effusion and a distended inferior vena cava.



pericarditis and haemopericardium. Calcified pleural plaques on the mediastinal reflection should not be confused for pericardial calcification. The significance of pericardial calcification will depend on the clinical context. If ancillary features of constrictive pericarditis are identified (Figure 7), then this may warrant further investigation.

Recommendation 6: the presence of other calcifications in the heart should be identified and reported.

CONCLUSION

The identification of calcification in the coronary arteries can provide information on the presence of previously unknown coronary artery disease and trigger an assessment of cardiovascular risk factors or associated symptoms such as chest pain. The identification of aortic valve calcification may identify patients with previously unknown aortic valve disease. Calcification in other parts of the heart including the mitral valve, myocardium and pericardium may also be identified on thoracic CT. These are often asymptomatic and the significance will depend on the clinical context.

These guidelines provide recommendations for the reporting of coronary, aortic valve and other cardiac calcification identified on non-gated thoracic CT performed for non-cardiac indications. The guidelines are simple and designed for routine clinical use for all radiologists reporting thoracic CT. The use of simple visual ordinal scoring systems for coronary and aortic valve calcification are designed to minimise the time required to implement these guidelines and provide a standardised reporting framework that is easily understood by reporters and referrers.

REFERENCES

- ONS Registered deaths by age, sex, selected underlying causes of death and the leading causes of death for both males and females. Office for National Statistics 2019;.
- National lung screening trial research T, Aberle DR, ADAMs am, Berg CD, black wc, Clapp JD, et al. reduced lung-cancer mortality with low-dose computed tomographic screening. *N Engl J Med* 2011; **365**: 395–409.
- Greenland P, Alpert JS, Beller GA, Benjamin EJ, Budoff MJ, Fayad ZA, et al. 2010 ACCF/AHA guideline for assessment of cardiovascular risk in asymptomatic adults: Executive summary: a report of the American College of cardiology Foundation/ American heart association Task force on practice guidelines. *Circulation* 2010;. ; **122**: 2748–642010. doi: <https://doi.org/10.1161/CIR.0b013e3182051bab>
- NHS England and NHS Improvement Diagnostic Imaging Dataset Statistical Release. 2019. Available from: <https://www.england.nhs.uk/statistics/wp-content/uploads/sites/2/2019/07/Provisional-Monthly-Diagnostic-Imaging-Dataset-Statistics-2019-07-18.pdf> [cited 2020 12/1/20].
- NHS Longterm plan Targeted screening for lung cancer with low radiation dose computed tomography. *Standard Protocol prepared for the Targeted Lung Health Checks Programme* 2019;. cited 2020 12/1/2020.
- Balata H, Blandin Knight S, Barber P, Colligan D, Crosbie EJ, Duerden R, et al. Targeted lung cancer screening selects individuals at high risk of cardiovascular disease. *Lung Cancer* 2018; **124**: 148–53. doi: <https://doi.org/10.1016/j.lungcan.2018.08.006>
- Rumberger JA, Simons DB, Fitzpatrick LA, Sheedy PF, Schwartz RS. Coronary artery calcium area by electron-beam computed tomography and coronary atherosclerotic plaque area. A histopathologic correlative study. *Circulation* 1995; **92**: 2157–62. doi: <https://doi.org/10.1161/01.cir.92.8.2157>
- Sangiorgi G, Rumberger JA, Severson A, Edwards WD, Gregoire J, Fitzpatrick LA, et al. Arterial calcification and not lumen stenosis is highly correlated with atherosclerotic plaque burden in humans: a histologic study of 723 coronary artery segments using nondecalsifying methodology. *J Am Coll Cardiol* 1998; **31**: 126–33. doi: [https://doi.org/10.1016/S0735-1097\(97\)00443-9](https://doi.org/10.1016/S0735-1097(97)00443-9)
- Raggi P, Cooil B, Callister TQ. Use of electron beam tomography data to develop models for prediction of hard coronary events. *Am Heart J* 2001; **141**: 375–82. doi: <https://doi.org/10.1067/mhj.2001.113220>
- Detrano R, Guerci AD, Carr JJ, Bild DE, Burke G, Folsom AR, et al. Coronary calcium as a predictor of coronary events in four racial or ethnic groups. *N Engl J Med* 2008; **358**: 1336–45. doi: <https://doi.org/10.1056/NEJMoa072100>
- Shaw LJ, Raggi P, Schisterman E, Berman DS, Callister TQ. Prognostic value of cardiac risk factors and coronary artery calcium screening for all-cause mortality. *Radiology* 2003; **228**: 826–33. doi: <https://doi.org/10.1148/radiol.2283021006>
- McClelland RL, Jorgensen NW, Budoff M, Blaha MJ, Post WS, Kronmal RA, et al. 10-Year coronary heart disease risk prediction using coronary artery calcium and traditional risk factors: derivation in the MESA (multi-ethnic study of atherosclerosis) with validation in the HNR (Heinz Nixdorf recall) study and the DHS (Dallas heart study). *J Am Coll Cardiol* 2015; **66**: 1643–53. doi: <https://doi.org/10.1016/j.jacc.2015.08.035>
- Williams MC, Moss A, Dweck M, Hunter A, Pawade T, Adamson PD, et al. Standardized reporting systems for computed tomography coronary angiography and calcium scoring: a real-world validation of CAD-RADS and CAC-DRS in patients with stable chest pain. *J Cardiovasc Comput Tomogr* 2020; **14**: 3–11. doi: <https://doi.org/10.1016/j.jcct.2019.07.010>
- Budoff MJ, Mayrhofer T, Ferencik M, Bittner D, Lee KL, Lu MT, et al. Prognostic value of coronary artery calcium in the promise study (prospective multicenter imaging study for evaluation of chest pain). *Circulation* 2017; **136**: 1993–2005. doi: <https://doi.org/10.1161/CIRCULATIONAHA.117.030578>
- Lee JH, Rizvi A, Hartaigh Briain Ó, Han D, Park MW, Roudsari HM, et al. The Predictive Value of Coronary Artery Calcium Scoring for Major Adverse Cardiac Events According to Renal Function (from the Coronary Computed Tomography Angiography Evaluation for Clinical Outcomes: An International Multicenter [CONFIRM] Registry. *Am J Cardiol* 2019; **123**: 1435–42. doi: <https://doi.org/10.1016/j.amjcard.2019.01.055>
- Whelton SP, Al Rifai M, Dardari Z, Shaw LJ, Al-Mallah MH, Matsushita K, et al. Coronary artery calcium and the competing long-term risk of cardiovascular vs. cancer mortality: the CAC Consortium. *Eur Heart J Cardiovasc Imaging* 2019; **20**: 389–95. doi: <https://doi.org/10.1093/ehjci/jey176>
- Erbel R, Möhlenkamp S, Moebus S, Schmermund A, Lehmann N, Stang A, et al. Coronary risk stratification, discrimination, and reclassification improvement based on quantification of subclinical coronary atherosclerosis: the Heinz Nixdorf recall study. *J Am Coll Cardiol* 2010; **56**: 1397–406. doi: <https://doi.org/10.1016/j.jacc.2010.06.030>
- Mitchell JD, Fergestrom N, Gage BF, Paisley R, Moon P, Novak E, et al. Impact of statins on cardiovascular outcomes following coronary artery calcium scoring. *J Am Coll Cardiol* 2018; **72**: 3233–42. doi: <https://doi.org/10.1016/j.jacc.2018.09.051>
- Kalia NK, Cespedes L, Youssef G, Li D, Budoff MJ. Motivational effects of coronary artery calcium scores on statin adherence and weight loss. *Coron Artery Dis* 2015; **26**: 225–30. doi: <https://doi.org/10.1097/MCA.0000000000000207>
- Kalia NK, Miller LG, Nasir K, Blumenthal RS, Agrawal N, Budoff MJ. Visualizing coronary calcium is associated with improvements in adherence to statin therapy. *Atherosclerosis* 2006; **185**: 394–9. doi: <https://doi.org/10.1016/j.atherosclerosis.2005.06.018>
- Rozanski A, Gransar H, Shaw LJ, Kim J, Miranda-Peats L, Wong ND, et al. Impact of coronary artery calcium scanning on coronary risk factors and downstream testing the EISNER (early identification of subclinical atherosclerosis by noninvasive imaging research) prospective randomized trial. *J Am Coll Cardiol* 2011; **57**: 1622–32. doi: <https://doi.org/10.1016/j.jacc.2011.01.019>
- Rumberger JA, Kaufman L. A Rosetta stone for coronary calcium risk stratification: agatston, volume, and mass scores in 11,490 individuals. *AJR Am J Roentgenol* 2003; **181**: 743–8. doi: <https://doi.org/10.2214/ajr.181.3.1810743>
- Agatston AS, Janowitz WR, Hildner FJ, Zusmer NR, Viamonte M, Detrano R. Quantification of coronary artery calcium using ultrafast computed tomography. *J Am Coll Cardiol* 1990; **15**: 827–32. doi: [https://doi.org/10.1016/0735-1097\(90\)90282-T](https://doi.org/10.1016/0735-1097(90)90282-T)
- Cury RC, Abbara S, Achenbach S, Agatston A, Berman DS, Budoff MJ, et al. CAD-RADSTM coronary artery disease – reporting and data system. An expert consensus document of the Society of cardiovascular computed tomography (SCCT), the American College of radiology (ACR) and the North American Society for

- cardiovascular imaging (NASCI). endorsed by the American College of cardiology. *J Cardiovasc Comput Tomogr* 2016; **10**: 269–81. doi: <https://doi.org/10.1016/j.jcct.2016.04.005>
25. Hutt A, Duhamel A, Deken V, Faivre J-B, Molinari F, Remy J, et al. Coronary calcium screening with dual-source CT: reliability of ungated, high-pitch chest CT in comparison with dedicated calcium-scoring CT. *Eur Radiol* 2016; **26**: 1521–8. doi: <https://doi.org/10.1007/s00330-015-3978-7>
 26. Xie X, Zhao Y, de Bock GH, de Jong PA, Mali WP, Oudkerk M, et al. Validation and prognosis of coronary artery calcium scoring in nontriggered thoracic computed tomography: systematic review and meta-analysis. *Circ Cardiovasc Imaging* 2013; **6**: 514–21. doi: <https://doi.org/10.1161/CIRCIMAGING.113.000092>
 27. Sverzellati N, Arcadi T, Salvolini L, Dore R, Zompatori M, Mereu M, et al. Under-Reporting of cardiovascular findings on chest CT. *Radiol Med* 2016; **121**: 190–9. doi: <https://doi.org/10.1007/s11547-015-0595-0>
 28. Williams KA, Kim JT, Holohan KM. Frequency of unrecognized, unreported, or underreported coronary artery and cardiovascular calcification on noncardiac chest CT. *J Cardiovasc Comput Tomogr* 2013; **7**: 167–72. doi: <https://doi.org/10.1016/j.jcct.2013.05.003>
 29. Uretsky S, Chokshi N, Kobrinski T, Agarwal SK, Po JR, Awan H, et al. The interplay of physician awareness and reporting of incidentally found coronary artery calcium on the clinical management of patients who underwent noncontrast chest computed tomography. *Am J Cardiol* 2015; **115**: 1513–7. doi: <https://doi.org/10.1016/j.amjcard.2015.02.051>
 30. Balakrishnan R, Nguyen B, Raad R, Donnino R, Naidich DP, Jacobs JE, et al. Coronary artery calcification is common on nongated chest computed tomography imaging. *Clin Cardiol* 2017; **40**: 498–502. doi: <https://doi.org/10.1002/clc.22685>
 31. Kirsch J, Martinez F, Lopez D, Novaro GM, Asher CR. National trends among radiologists in reporting coronary artery calcium in non-gated chest computed tomography. *Int J Cardiovasc Imaging* 2017; **33**: 251–7. doi: <https://doi.org/10.1007/s10554-016-0986-x>
 32. Phillips WJ, Johnson C, Law A, Turek M, Small AR, Dent S, et al. Comparison of Framingham risk score and chest-CT identified coronary artery calcification in breast cancer patients to predict cardiovascular events. *Int J Cardiol* 2019; **289**: 138–43. doi: <https://doi.org/10.1016/j.ijcard.2019.01.056>
 33. Rodriguez-Granillo GA, Reynoso E, Capunay C, Garcia-Garcia HM, Carrascosa P. Impact on mortality of coronary and non-coronary cardiovascular findings in non-gated thoracic CT by malignancy status. *Eur J Radiol* 2017; **93**: 169–77. doi: <https://doi.org/10.1016/j.ejrad.2017.05.030>
 34. van de Wiel JCM, Wang Y, Xu DM, van der Zaag-Loonen HJ, van der Jagt EJ, van Klaveren RJ, et al. Neglectable benefit of searching for incidental findings in the Dutch-Belgian lung cancer screening trial (NELSON) using low-dose multidetector CT. *Eur Radiol* 2007; **17**: 1474–82. doi: <https://doi.org/10.1007/s00330-006-0532-7>
 35. Chiles C, Duan F, Gladish GW, Ravenel JG, Baginski SG, Snyder BS, et al. Association of coronary artery calcification and mortality in the National lung screening trial: a comparison of three scoring methods. *Radiology* 2015; **276**: 82–90. doi: <https://doi.org/10.1148/radiol.15142062>
 36. Shemesh J, Henschke CI, Farooqi A, Yip R, Yankelevitz DF, Shaham D, et al. Frequency of coronary artery calcification on low-dose computed tomography screening for lung cancer. *Clin Imaging* 2006; **30**: 181–5. doi: <https://doi.org/10.1016/j.clinimag.2005.11.002>
 37. Williams MC, Murchison JT, Edwards LD, Agustí A, Bakke P, Calverley PMA, et al. Coronary artery calcification is increased in patients with COPD and associated with increased morbidity and mortality. *Thorax* 2014; **69**: 718–23. doi: <https://doi.org/10.1136/thoraxjnl-2012-203151>
 38. Williams MC, Morley NCD, Muir KC, Reid JH, van Beek EJR, Murchison JT. Coronary artery calcification is associated with mortality independent of pulmonary embolism severity: a retrospective cohort study. *Clin Radiol* 2019; **74**: 973.e7–973.e14. doi: <https://doi.org/10.1016/j.crad.2019.08.023>
 39. Shao L, Yan AT, Lebovic G, Wong HH, Kirpalani A, Deva DP. Prognostic value of visually detected coronary artery calcification on unenhanced non-gated thoracic computed tomography for prediction of non-fatal myocardial infarction and all-cause mortality. *J Cardiovasc Comput Tomogr* 2017; **11**: 196–202. doi: <https://doi.org/10.1016/j.jcct.2017.03.004>
 40. Hecht HS, Cronin P, Blaha MJ, Budoff MJ, Kazerooni EA, Narula J, et al. 2016 SCCT/STR guidelines for coronary artery calcium scoring of noncontrast noncardiac chest CT scans: a report of the Society of cardiovascular computed tomography and society of thoracic radiology. *J Cardiovasc Comput Tomogr* 2017; **11**: 74–84. doi: <https://doi.org/10.1016/j.jcct.2016.11.003>
 41. Shemesh J, Henschke CI, Shaham D, Yip R, Farooqi AO, Cham MD, et al. Ordinal scoring of coronary artery calcifications on low-dose CT scans of the chest is predictive of death from cardiovascular disease. *Radiology* 2010; **257**: 541–8. doi: <https://doi.org/10.1148/radiol.10100383>
 42. Htwe Y, Cham MD, Henschke CI, Hecht H, Shemesh J, Liang M, et al. Coronary artery calcification on low-dose computed tomography: comparison of Agatston and ordinal scores. *Clin Imaging* 2015; **39**: 799–802. doi: <https://doi.org/10.1016/j.clinimag.2015.04.006>
 43. Carabello BA. Clinical practice. Aortic stenosis. *N Engl J Med* 2002; **346**: 677–82.
 44. Kanza RE, Allard C, Berube M. Cardiac findings on non-gated chest computed tomography: a clinical and pictorial review. *Eur J Radiol* 2016; **85**: 435–51. doi: <https://doi.org/10.1016/j.ejrad.2015.11.042>
 45. Messika-Zeitoun D, Aubry M-C, Detaint D, Bielak LF, Peyser PA, Sheedy PF, et al. Evaluation and clinical implications of aortic valve calcification measured by electron-beam computed tomography. *Circulation* 2004; **110**: 356–62. doi: <https://doi.org/10.1161/01.CIR.0000135469.82545.D0>
 46. Cowell SJ, Newby DE, Burton J, White A, Northridge DB, Boon NA, et al. Aortic valve calcification on computed tomography predicts the severity of aortic stenosis. *Clin Radiol* 2003; **58**: 712–6. doi: [https://doi.org/10.1016/S0009-9260\(03\)00184-3](https://doi.org/10.1016/S0009-9260(03)00184-3)
 47. Cueff C, Serfaty J-M, Cimadevilla C, Laissy J-P, Himbert D, Tubach F, et al. Measurement of aortic valve calcification using multislice computed tomography: correlation with haemodynamic severity of aortic stenosis and clinical implication for patients with low ejection fraction. *Heart* 2011; **97**: 721–6. doi: <https://doi.org/10.1136/hrt.2010.198853>
 48. Pawade T, Clavel M-A, Tribouilloy C, Dreyfus J, Mathieu T, Tastet L, et al. Computed tomography aortic valve calcium scoring in patients with aortic stenosis. *Circ Cardiovasc Imaging* 2018; **11**: e007146. doi: <https://doi.org/10.1161/CIRCIMAGING.117.007146>
 49. Aggarwal SR, Clavel M-A, Messika-Zeitoun D, Cueff C, Malouf J, Araoz PA, et al. Sex differences in aortic valve calcification measured by multidetector computed tomography in aortic stenosis. *Circ Cardiovasc Imaging* 2013; **6**: 40–7. doi: <https://doi.org/10.1161/CIRCIMAGING.112.980052>
 50. Rosenhek R, Binder T, Porenta G, Lang I, Christ G, Schemper M, et al. Predictors of outcome in severe, asymptomatic aortic stenosis. *N Engl J Med* 2000; **343**:

- 611–7. doi: <https://doi.org/10.1056/NEJM200008313430903>
51. Tastet L, Enriquez-Sarano M, Capoulade R, Malouf J, Araoz PA, Shen M, et al. Impact of Aortic Valve Calcification and Sex on Hemodynamic Progression and Clinical Outcomes in AS. *J Am Coll Cardiol* 2017; **69**: 2096–8. doi: <https://doi.org/10.1016/j.jacc.2017.02.037>
52. Clavel M-A, Messika-Zeitoun D, Pibarot P, Aggarwal SR, Malouf J, Araoz PA, et al. The complex nature of discordant severe calcified aortic valve disease grading: new insights from combined Doppler echocardiographic and computed tomographic study. *J Am Coll Cardiol* 2013; **62**: 2329–38. doi: <https://doi.org/10.1016/j.jacc.2013.08.1621>
53. Falk V, Baumgartner H, Bax JJ, De Bonis M, Hamm C, Holm PJ, et al. 2017 ESC/EACTS guidelines for the management of valvular heart disease. *Eur J Cardiothorac Surg* 2017;. ; **52**: 616–642017. doi: <https://doi.org/10.1093/ejcts/ezx324>
54. Liu F, Coursey CA, Grahame-Clarke C, Sciacca RR, Rozenshtein A, Homma S, et al. Aortic valve calcification as an incidental finding at CT of the elderly: severity and location as predictors of aortic stenosis. *AJR Am J Roentgenol* 2006; **186**: 342–9. doi: <https://doi.org/10.2214/AJR.04.1366>
55. Koos R, Kühl HP, Mühlenbruch G, Wildberger JE, Günther RW, Mahnken AH. Prevalence and clinical importance of aortic valve calcification detected incidentally on CT scans: comparison with echocardiography. *Radiology* 2006; **241**: 76–82. doi: <https://doi.org/10.1148/radiol.24111051163>
56. Zhu Y, Wang Y, Gioia WE, Yip R, Jirapatnakul AC, Chung MS, et al. Visual scoring of aortic valve calcifications on low-dose CT in lung cancer screening. *Eur Radiol* 2020; **30**: 2658–68. doi: <https://doi.org/10.1007/s00330-019-06614-w>
57. Raju P, Sallomi D, George B, Patel H, Patel N, Lloyd G. Aortic valve calcification - a commonly observed but frequently ignored finding during CT scanning of the chest. *Int J Clin Pract* 2012; **66**: 552–5. doi: <https://doi.org/10.1111/j.1742-1241.2012.02916.x>
58. Lippert JA, White CS, Mason AC, Plotnick GD. Calcification of aortic valve detected incidentally on CT scans: prevalence and clinical significance. *AJR Am J Roentgenol* 1995; **164**: 73–7. doi: <https://doi.org/10.2214/ajr.164.1.7998572>
59. Paulsen NH, Carlsen BB, Dahl JS, Carter-Storch R, Christensen NL, Khurrami L, et al. Association between aortic valve calcification measured on non-contrast computed tomography and aortic valve stenosis in the general population. *J Cardiovasc Comput Tomogr* 2016; **10**: 309–15. doi: <https://doi.org/10.1016/j.jcct.2016.05.001>
60. Mahnken AH, Mühlenbruch G, Das M, Wildberger JE, Kühl HP, Günther RW, et al. MdcT detection of mitral valve calcification: prevalence and clinical relevance compared with echocardiography. *AJR Am J Roentgenol* 2007; **188**: 1264–9. doi: <https://doi.org/10.2214/AJR.06.1002>