



International Institute for  
Applied Systems Analysis  
[www.iiasa.ac.at](http://www.iiasa.ac.at)

# Modeling Industrial Dynamics with Innovative Entrants

Winter, S.G., Kaniovski, Y.M. and Dosi, G.

IIASA Interim Report  
May 1998



Winter, S.G., Kaniovski, Y.M. and Dosi, G. (1998) Modeling Industrial Dynamics with Innovative Entrants. IIASA Interim Report. IR-98-022 Copyright © 1998 by the author(s). <http://pure.iiasa.ac.at/5626/>

**Interim Report** on work of the International Institute for Applied Systems Analysis receive only limited review. Views or opinions expressed herein do not necessarily represent those of the Institute, its National Member Organizations, or other organizations supporting the work. All rights reserved. Permission to make digital or hard copies of all or part of this work for personal or classroom use is granted without fee provided that copies are not made or distributed for profit or commercial advantage. All copies must bear this notice and the full citation on the first page. For other purposes, to republish, to post on servers or to redistribute to lists, permission must be sought by contacting [repository@iiasa.ac.at](mailto:repository@iiasa.ac.at)



---

International Institute for Applied Systems Analysis • A-2361 Laxenburg • Austria  
Tel: +43 2236 807 • Fax: +43 2236 71313 • E-mail: [info@iiasa.ac.at](mailto:info@iiasa.ac.at) • Web: [www.iiasa.ac.at](http://www.iiasa.ac.at)

***INTERIM REPORT***      IR-98-022 / May 1998

---

## **Modeling Industrial Dynamics with Innovative Entrants**

*S.G. Winter (winter@upenn.edu)*  
*Y.M. Kaniovski (kaniov@iiasa.ac.at)*  
*G. Dosi (dosi@iiasa.ac.at)*

---

**Approved by**  
**Gordon J. MacDonald (macdon@iiasa.ac.at)**  
**Director, IIASA**

---

***Interim Reports*** on work of the International Institute for Applied Systems Analysis receive only limited review. Views or opinions expressed herein do not necessarily represent those of the Institute, its National Member Organizations, or other organizations supporting the work.

## Abstract

The paper analyzes some generic features of industrial dynamics whereby innovative change is carried, stochastically, by new entrants. Relying on the formal representation suggested in Winter et al. (1997), it studies both the asymptotic properties of such processes and their finite time dynamics to account for a few empirical stylized facts, including persistent entry and exit, skewed size distributions and turbulence in market shares.

**Key words:** evolution, competition, learning, stochastic entry, entrepreneurial start-ups, expanding set of technological opportunities, industrial dynamics.

*JEL* Classification Numbers: L11, O30, C60.

## Acknowledgements

Support of this study by the International Institute for Applied Systems Analysis (IIASA), Austria; the Fujitsu Research Institute (FRI), Japan; the Italian National Research Council (CNR) and Italian Ministry of University and Research (MURST, “Progetti 40%” is gratefully acknowledged. Mariele Berté provided the computer simulations of the model and Francesca Chiaromonte preciously contributed to the endless discussions concerning both the fine details of the model and its computer simulations.

## Contents

<b>1</b>	<b>Introduction</b>	<b>1</b>
<b>2</b>	<b>The basic framework of the model: a first setting with increasing capital efficiencies</b>	<b>2</b>
2.1	A dynamical setting of the model . . . . .	4
2.2	Asymptotic properties of the industry . . . . .	7
2.3	Different time-scales of technological learning . . . . .	11
2.4	A computer simulation . . . . .	12
<b>3</b>	<b>An alternative dynamic setting: increasing productivity of labor</b>	<b>17</b>
3.1	Main assumptions . . . . .	17
3.2	A dynamic balance equation for industry evolution . . . . .	18
3.3	Long run behavior of the industry . . . . .	20
3.4	A numerical run of the model . . . . .	23
<b>4</b>	<b>Modeling learning on both capital and labour efficiencies</b>	<b>28</b>
<b>5</b>	<b>Conclusions</b>	<b>28</b>
	<b>Appendix</b>	<b>31</b>
	<b>References</b>	<b>37</b>

# Modeling Industrial Dynamics with Innovative Entrants

*S.G. Winter (winter@upenn.edu)*  
*Y.M. Kaniovski (kaniov@iiasa.ac.at)*  
*G. Dosi (dosi@iiasa.ac.at)*

## 1 Introduction

In this work we explore the dynamic features of industries characterized by the persistent arrival of innovative entrants. The models which follow build upon and modify the *baseline model* presented in Winter et al. (1997). In an extreme synthesis, in the latter we develop a framework of analysis of the competitive dynamics of industries composed of heterogeneous firms and continuing stochastic entry. There, we show that despite the simplicity of the assumptions, the model is able to account for a rather rich set of empirical ‘stylized facts’, such as: (i) continuing turbulence in market shares; (ii) persistent inflows and outflows of firms; (iii) ‘life cycle’ phenomena – including, in particular, nearer the birth of an industry, relatively sudden ‘shakeouts’, yielding distinctly different industrial structure thereafter; and (iv) skewed size distributions of firms<sup>1</sup>.

The ‘heroic’ simplicity of Winter et al. (1997) goes as far as assuming that the set of technological options among which entrants draw – as a formal metaphor of their diverse capabilities – is given from the start and is invariant throughout the unfolding evolution of the industry. While this assumption is certainly in tune with the spirit of most evolutionary game-theoretical set-ups, it is also at odds with an overwhelming empirical evidence highlighting the role of innovators as carriers of technological and organizational discoveries. Typically, these discoveries happen to be tapped at some point in the history of an industry on the grounds of the available knowledge base at that time, but would not have been possible earlier on, given the knowledge base at that earlier time.

More formally, this implies that what is commonly called the ‘production possibility

---

<sup>1</sup>This evidence is discussed at much greater length in the special issues of *Industrial and Corporate Change*, 5, 1997 and of *The International Journal of Industrial Organization*, 4, 1995. See also Baldwin (1995); Carroll and Hannan (1995); Davis et al. (1996); Dunne, Roberts and Samuelson (1988); Dosi et al. (1995); Geroski (1995); Hannan and Freeman (1989).

set’ endogenously shifts, due to the cumulative (but stochastic) effects of exploration by potential innovators<sup>2</sup>.

The model which follows studies the properties of industrial dynamics which correspond to that archetype of industrial evolution which some authors call *Schumpeter Mark I regime* (cf. Malerba and Orsenigo (1995) and Dosi et al. (1995)). In short, while of course both incumbents and new entrants empirically attempt to explore – to varying degrees – yet unexploited opportunities of innovation, here we focus upon the properties of that extreme archetype whereby only entrants have a positive probability of advancing the current state of technological knowledge. (Hence the name of such a ‘regime’, in analogy with the emphasis of Schumpeter (1934) upon novel entrepreneurial efforts as drivers of change.)

Compared with the cited ‘baseline model’ discussed in Winter et al. (1997), in the following we shall try to disentangle those properties which appear to be generic features of a wide class of processes of industrial dynamics simply resting upon persistently heterogeneous agents and market selection and, conversely, those properties which depend upon more specific forms of innovative learning, such as the *Schumpeter Mark I* regime considered here<sup>3</sup>. As we shall show below, some of the emerging ‘stylized facts’ of the modeled dynamics appear to robustly hold in both set-ups, with or without innovative entry. Other features, including some path-dependence properties, interestingly, appear only when ‘open-ended’ dynamics on technological opportunities is accounted for, as we do in this work.

Section 2 sets out the basic structure of the model, in a first specification with innovative learning by entrants directed at increasing capital productivity, and, conversely, in section 3, we study the properties of a symmetrical assumption of (stochastically) increasing labour efficiencies.

## 2 The basic framework of the model: a first setting with increasing capital efficiencies

Let us assume an industry evolving in discrete time  $t = 0, 1, \dots$ . At  $t = 0$  there are no firms ready to produce, but  $k$  firms arrive to the industry, ready to start manufacturing

---

<sup>2</sup>For more detailed empirical corroborations of these points, cf., among others, Dosi (1988) and Freeman and Soete (1997).

<sup>3</sup>See Winter et al. (1997) also for some comparative assessment of somewhat germane models of industrial dynamics based on much more stringent assumptions of individual forward-looking rationality and collective equilibrium, such as Jovanovic (1982), Hopenhayn (1992), Ericson and Pakes (1995).



at  $t = 1$ . At time  $t \geq 1$  the industry consists of  $n_t$  firms which are involved in production and a number of new firms that enter at  $t$  and will participate in manufacturing from  $t + 1$  onward. Uniformly for the whole industry we have:

- $v$  - price per unit of physical capital,  $v > 0$ ,
- $d$  - depreciation rate of the capital stock,  $0 < d \leq 1$ .

In the first version of the model which follows the output is produced by capital alone. The competitiveness of any firm represented in the industry is ultimately determined by its capital per unit of output. Let us designate the latter by  $a_i$  for the  $i$ -th firm. As time goes on, the “best” capital/output ratio (in real terms) attainable in the industry decreases.

Let us further assume the following endogenous stochastic mechanism of learning by entrants. Take a nonnegative random variable  $\xi$  with a finite variance  $D\xi$ . Set  $\zeta$  for a random variable distributed over  $[a, b]$ ,  $0 < a < b < \infty$ . For each time instant  $t \geq 0$  we allow for the industry to have  $k \geq 1$  new firms<sup>4</sup> whose levels of capital per unit of output are randomly determined as  $\exp\{-A_t\}\zeta^i$ ,  $tk + 1 \leq i \leq (t + 1)k$ . Here  $A_{t+1} = A_t + \xi^{t+1}$ ,  $t \geq 0$ ,  $A_0 = \xi^0$ . Also,  $\xi^t$ ,  $t \geq 0$ , and  $\zeta^i$ ,  $i \geq 1$ , are mutually independent collections of realizations of  $\xi$  and  $\zeta$ . Thus, all capital ratios feasible for newcomers at time  $t$  belong to  $[\exp\{-A_t\}a, \exp\{-A_t\}b]$ . Their distribution within this interval is governed by a realization of  $\exp\{-A_t\}\zeta$ . Consequently,  $A_t$  characterizes in a probabilistic way the highest productivity of capital attainable to newcomers in the industry at time  $t$ . Note that by construction *in this competitive environment only newcomers learn to improve the productivity of capital*.

The productive capacity of the  $i$ -th firm is  $Q_t^i = K_i(t)/a_i$ , where  $K_i(t)$  stands for the capital of the  $i$ -th firm at time  $t$ . The total productive capacity of the industry involved in manufacturing at time  $t$  is

$$Q_t = \sum_{i=1}^{n_t} Q_t^i.$$

We assume a decreasing continuous demand function  $p = H(q)$ , mapping  $[0, \infty)$  in  $[0, H(0)]$  such that  $H(0) < \infty$  and  $H(q) \rightarrow 0$  as  $q \rightarrow \infty$ , where as usual,  $p$  stands for the price and  $q$  for demanded quantities. (Thus, the price at time  $t$  equals  $H(Q_t)$ .) The gross profit per unit of output at  $t$  is also  $H(Q_t)$  since, without loss of generality we may also assume zero variable costs. The gross investment per unit of output at  $t$  is a share of the gross profit,

---

<sup>4</sup>Unlike the ‘baseline model’ in Winter et al. (1997), we assume here for simplicity a fixed number of entrants. However, the qualitative properties of the models which follow would not change were we to allow for stochastic entry. Moreover, they would hold also if the probability of entry were made dependent upon current profitabilities of incumbents (cf. variants, p.9 of Winter et al. (1997)).

i.e.  $\lambda H(Q_t)$ , where the constant  $\lambda$  captures the share of the gross profit which does not leak out as the interest payments and shareholders' dividends, and can be considered to be a measure for the propensity to invest. The total gross investment per unit of capital for the  $i$ -th firm at time  $t$  reads  $\lambda H(Q_t)/va_i$ .

For each capital ratio generated at  $t$  we shall allow a single entrant. Entrants' initial capitals are independent realizations  $\theta^i$ ,  $i \geq 1$ , of a random variable  $\theta$  distributed over  $[c, h]$ ,  $0 < c < h < \infty$ . (It is assumed that the realizations of  $\xi$ ,  $\zeta$  and  $\theta$  are mutually independent random variables.)

To complete the description of the competitive environment we need some death mechanism. A firm is dead at time  $t$  and does not participate in the production process from  $t + 1$  onward if its capital at  $t$  is less than  $\epsilon c$ ,  $\epsilon \in (0, 1]$ <sup>5</sup>.

We assume that all random elements are given on a probability space  $\{\Omega, \mathcal{F}, P\}$ .

In order to study the long run behavior of this industry, let us give a formal description of its evolution.

## 2.1 A dynamical setting of the model

Let firm  $i$  be manufacturing during time  $t$ . Our investment rule implies that at the end of this production period its capital is

$$Q_t^i a_i \left[ 1 - d + \frac{\lambda}{va_i} H(Q_t) \right].$$

If this value does not drop below the death threshold  $\epsilon c$ , the firm continues to manufacture during time instant  $t + 1$ . Otherwise it dies. To capture these possibilities, we introduce  $\chi_{Q_t^i [1-d+\frac{\lambda}{va_i}H(Q_t)] \geq \epsilon c/a_i}$  the indicator function of the event that the firm continues to manufacture. As usual, for a relation  $\mathcal{A}$  we set that

$$\chi_{\mathcal{A}} = \begin{cases} 1, & \text{if } \mathcal{A} \text{ is true,} \\ 0, & \text{otherwise.} \end{cases}$$

Now the evolution of the  $i$ -th firm (in terms of productive capacity) reads

$$Q_{t+1}^i = Q_t^i \left[ 1 - d + \frac{\lambda}{va_i} H(Q_t) \right] \chi_{Q_t^i [1-d+\frac{\lambda}{va_i}H(Q_t)] \geq \epsilon c/a_i}. \quad (2.1)$$

These equations are not handy for analysis. Mortality implies that  $n_t$ , the number of firms in business, changes over time. Thus, we have a system with a variable dimension. Moreover, these equations do not incorporate the entry process: hence (2.1) only captures a part of the evolution of the industry. In order to handle entry and variable numbers of incumbents one needs a dynamic representation of the model that leaves room for all feasible development paths. It is nested in an infinite dimensional space.

---

<sup>5</sup>The situation without mortality can be thought of as a limit case when  $\epsilon = 0$ .

Introduce a space  $R_\infty$  of vectors with denumerably many coordinates. Set

$$R_\infty = R \otimes \left[ \bigotimes_{i=1}^{\infty} R_i \right],$$

where  $\otimes$  stands for the direct sum of a real line  $R$  and  $2k$ -dimensional real vector spaces  $R_i$ ,  $i \geq 1$ . Thus, for every  $\mathbf{q} \in R_\infty$

$$\mathbf{q} = q \otimes \left[ \bigotimes_{i=1}^{\infty} \mathbf{q}^i \right] \quad (2.2)$$

with  $q \in R$  and  $\mathbf{q}^i \in R_i$ ,  $i \geq 1$ . Define an automorphism  $\mathbf{D}(\cdot)$  on  $R_\infty$  such that

$$\mathbf{D}(\mathbf{q}) = \mathbf{D}^1(\mathbf{q}) \otimes \left[ \bigotimes_{i=2}^{\infty} \mathbf{D}^i(\mathbf{q}) \right],$$

where  $\mathbf{D}^1(\cdot) : R_\infty \mapsto R \otimes R_1 \otimes R_2$  and  $\mathbf{D}^i(\cdot) : R_\infty \mapsto R_i$ ,  $i \geq 3$ . Let

$$D_1^1(\mathbf{q}) = q, \quad D_s^1(\mathbf{q}) = 0, \quad 2 \leq s \leq 2k+1, \quad D_{2k+j+1}^1(\mathbf{q}) = q_j^1 \exp\{-q\} \chi_{\mathcal{A}_j^1}(\mathbf{q}),$$

$$D_{3k+j+1}^1(\mathbf{q}) = q_{k+j}^1 \left[ 1 - d + \frac{\lambda}{v} H \left( \sum_{s=1}^k [q_{k+s}^1 \exp\{q\}/q_s^1 + \sum_{i=2}^{\infty} q_{k+s}^i/q_s^i] \right) \exp\{q\}/q_j^1 \right] \chi_{\mathcal{A}_j^1}(\mathbf{q}),$$

$$D_j^i(\mathbf{q}) = q_j^i \chi_{\mathcal{A}_j^i}(\mathbf{q}), \quad D_{k+j}^i(\mathbf{q}) = q_{k+j}^i \left[ 1 - d + \frac{\lambda}{v} H \left( \sum_{s=1}^k [q_{k+s}^1 \exp\{q\}/q_s^1 + \right.$$

$$\left. \sum_{p=2}^{\infty} q_{k+s}^p/q_s^p \right] / q_j^i \chi_{\mathcal{A}_j^i}(\mathbf{q}),$$

where  $1 \leq j \leq k$ ,  $i \geq 2$ ,  $\mathcal{A}_j^1(\mathbf{q})$  designates the relation

$$q_{k+j}^1 \left[ 1 - d + \frac{\lambda}{v} H \left( \sum_{s=1}^k [q_{k+s}^1 \exp\{q\}/q_s^1 + \sum_{i=2}^{\infty} q_{k+s}^i/q_s^i] \right) \exp\{q\}/q_j^1 \right] \geq \epsilon c$$

and  $\mathcal{A}_j^i(\mathbf{q})$  stands for the relation

$$q_{k+j}^i \left[ 1 - d + \frac{\lambda}{v} H \left( \sum_{s=1}^k [q_{k+s}^1 \exp\{q\}/q_s^1 + \sum_{p=2}^{\infty} q_{k+s}^p/q_s^p] \right) / q_j^i \right] \geq \epsilon c.$$

We restrict ourselves to vectors  $\mathbf{q}$  defined by (2.2) belonging to

$$R_\infty^+ = [0, \infty) \otimes \left[ \bigotimes_{i=1}^{\infty} R_i^+ \right]$$

and set  $H(\infty) = 0$  for the case when the iterated sum involved in the above expressions is infinite. Here

$$R_i^+ = \{\mathbf{q}^i \in R_i : q_j^i > 0, q_{k+j}^i \geq 0, j = 1, 2, \dots, k\}, \quad i \geq 1.$$

Also,  $D_s^i(\cdot)$  and  $q_s^i$  stand for the  $s$ -th coordinates of  $\mathbf{D}^i(\cdot)$  and  $\mathbf{q}^i$ .

Define infinite dimensional random vectors  $\mathbf{Y}^t$ ,  $t \geq 0$ , setting

$$Y_1^t = \xi^t, \quad Y_{i+1}^t = \zeta^{tk+i}, \quad Y_{k+i+1}^t = \theta^{tk+i}, \quad i = 1, 2, \dots, k. \quad Y_j^t = 0 \quad j \geq 2k + 2.$$

(Note that here we number coordinates linearly rather than in terms of cohorts as above.)

The evolution of the industry is as follows

$$\mathbf{q}(t+1) = \mathbf{D}(\mathbf{q}(t)) + \mathbf{Y}^{t+1}, \quad t \geq 0, \quad \mathbf{q}(0) = \mathbf{Y}^0, \quad (2.3)$$

Since  $\mathbf{Y}^t$  are independent in  $t$ , this expression defines a Markov process on  $R_\infty^+$ . Moreover, since the deterministic operator  $\mathbf{D}(\cdot)$  as well as the distribution of  $\mathbf{Y}^t$  do not depend on time, the process is homogeneous in time.

Conceptually, this phase space is formed by the value characterizing the highest productivity which is potentially attainable at any time in the industry (the first coordinate), capitals per unit of output (the first  $k$  coordinates in each cohort, that is, a  $2k \times 2k$  box in the above structure) and individual capital stocks (the last  $k$  coordinates in each cohort: that is, to a capital ratio placed at the  $j$ -th position corresponds the capital placed at the  $(k+j)$ -th position) of all firms that stay alive. Therefore, if  $q_{k+i}^n(t) > 0$  for some  $i = 1, 2, \dots, k$  and  $n \leq t$ , then it means that a firm with  $q_i^n(t)$  as capital per unit of output came to the industry at  $t-n$  has been alive until  $t$ , that is, has manufactured  $n-1$  times, and continues to produce during the  $t$ -th time period. The representation via a direct sum seems to be a handy way of explicitly capturing the dynamic of cohorts.

The formulas for  $\mathbf{D}^i(\cdot)$ ,  $i \geq 2$ , reflect our investment rule together with the assumption that the capital ratio remains constant through the lifetime of a firm. In analogy with (2.1), they are capturing the dynamic of capital stocks (more precisely (2.1) refers to productive capacities). The indicators are needed because of the death rule<sup>6</sup>. The relation  $\mathcal{A}_j^i(\mathbf{q})$  gives the criterion that a firm from the  $i$ -th box placed at the  $j$ -th position continues to manufacture given the state of the industry  $\mathbf{q}$ . As from above, the first coordinate carries the value determining the highest productivity attainable in the industry. The further  $2k \times 2k$  block is zero to host newcoming firms. The next  $k$  ones reflect the learning rule on improvement of productivity adopted by newcoming firms. Finally, the last  $k$  coordinates of  $\mathbf{D}^1(\cdot)$  are defined according to our investment rule.

Given this formal description of this process of industry evolution, let us proceed to the analysis of its long run behavior.

---

<sup>6</sup>In particular, applied to the first  $k$  coordinates in a cohort, they prevent from carrying over the capital ratios of firms that have died. However, the use of the death indicators to the first  $k$  coordinates is basically a matter of taste: without relevance for the conclusions, dropping them implies that the capital ratios of dead firms are in the structure of the model forever.

## 2.2 Asymptotic properties of the industry

Define  $\mathcal{B}^\infty$  the minimal  $\sigma$ -field in  $R_\infty$  generated by sets of the following form

$$\mathcal{A} = A \otimes \left[ \bigotimes_{j=1}^{\infty} A^j \right], \quad (2.4)$$

where  $A$  designates a set from the  $\sigma$ -field of Borel sets  $\mathcal{B}$  on the real line, and  $A^j$  being a set from the  $\sigma$ -field of Borel sets  $\mathcal{B}_j$  in  $R_j$ . For every such set  $\mathcal{A}$  one step transition probability of process (2.3) reads

$$p^1(\mathbf{q}, \mathcal{A}) = P\{\mathbf{D}(\mathbf{q}) + \mathbf{Y} \in \mathcal{A}\} = P\{\mathbf{Y}^* \in A \otimes A_1\} \chi_{\mathbf{D}(\mathbf{q}) \in \bigotimes_{i=2}^{\infty} A^i}. \quad (2.5)$$

Here  $\mathbf{Y}^*$  stands for the  $(2k+1)$ -dimensional vector whose coordinates coincide with first  $2k+1$  coordinates of a generic vector  $\mathbf{Y}$  having the same distribution as  $\mathbf{Y}^t$ ,  $t \geq 0$ .

To study the ergodic properties of process (2.3), we need the following condition which is due to Doeblin (see Doob (1953), p. 192).

*There is a finite positive measure  $\phi(\cdot)$  with  $\phi(R_\infty^+) > 0$  and a positive number  $\delta$  such that for all  $\mathbf{q} \in R_\infty^+$   $p^1(\mathbf{q}, \mathcal{A}) \leq 1 - \delta$  if  $\phi(\mathcal{A}) \leq \delta$ .*

For a set  $\mathcal{A}$  as in (2.4) let  $\phi(\mathcal{A}) = P\{\mathbf{Y}^* \in A \otimes A_1\}$ . From (2.4) it follows that  $p^1(\mathbf{q}, \mathcal{A}) \leq \phi(\mathcal{A})$ . Since  $\phi(R_\infty^+) = P\{\mathbf{Y}^* \in [0, \infty) \otimes R_1^+\} = 1$ , restricting ourselves to  $\delta \leq 1/2$ , we get that, if  $\phi(\mathcal{A}) \leq \delta$ , then  $p^1(\mathbf{q}, \mathcal{A}) \leq \delta \leq 1 - \delta$ . Thus, Doeblin's condition holds for this choice of  $\phi(\cdot)$  and all  $\delta \in (0, 1/2]$ .

Now, by Theorem 5.7 from Doob (1953) (p. 214), we see that

$$\pi(\mathbf{q}, \mathcal{A}) = \lim_{n \rightarrow \infty} \frac{1}{n} \sum_{t=1}^n p^t(\mathbf{q}, \mathcal{A})$$

defines for each  $\mathbf{q} \in R_\infty^+$  a stationary absolute distribution. Here  $p^t(\mathbf{x}, \cdot)$  stands for the transition probability in  $t$  steps, that is,

$$p^t(\mathbf{q}, \mathcal{A}) = \int_{R_\infty^+} p^{t-1}(\mathbf{y}, \mathcal{A}) dp^1(\mathbf{q}, \mathbf{y}), \quad t \geq 2.$$

The stationary distribution  $\pi(\mathbf{q}, \cdot)$  turns out to be the same, that is  $\pi_{\mathcal{L}}(\cdot)$ , for all  $\mathbf{q}$  belonging to the same ergodic set  $\mathcal{L}$  (see Doob (1953), p. 210). It has the following generic property

$$\int_{\mathcal{L}} p^1(\mathbf{x}, \mathcal{A}) d\pi_{\mathcal{L}}(\mathbf{x}) = \pi_{\mathcal{L}}(\mathcal{A}).$$

In general, it is not possible to find an explicit expression for  $\pi_{\mathcal{L}}(\cdot)$  from this relation.

Thus, we may only obtain the following result concerning ergodicity of process (2.3).

**Theorem 2.1.** *For every set  $\mathcal{A}$  given by (2.4) with probability one*

$$\frac{1}{n} \sum_{t=1}^n p^t(\mathbf{Y}^0, \mathcal{A}) \rightarrow \pi(\mathbf{Y}^0, \mathcal{A}) \quad (2.6)$$

as  $n \rightarrow \infty$ . Here  $\pi(\mathbf{Y}^0, \cdot)$  is a stochastic probability measure (since it depends on  $\mathbf{Y}^0$ ), with  $\pi_{\mathcal{L}}(\cdot)$  for any elementary outcome  $\omega \in \Omega$ , whereby  $\mathbf{Y}^0$  belongs for this elementary outcome to an ergodic set  $\mathcal{L}$ .

Consider the implications of this result in terms of *path dependency*. On the one hand, Doeblin's condition implies that events occurring at  $t$  and  $t + n$  are getting more and more statistically independent as  $n$  increases. Thus, the impact of the initial state vanishes as time goes on. Should one be able to prove that there is a single ergodic set, then the limit of time averages in (2.6) would not depend on the initial state: hence the lack of path-dependency. On the other hand, the limit in (2.6), in general, does depend on the initial state. But the dependency acts in a way that such limit turns out to be the same for all initial states belonging to the same ergodic set. Therefore, there might indeed be some path-dependency which is governed by a partition of  $\Omega$ . Note also that this partition, in general, turns out to be less fine than the one given by  $\mathbf{Y}^0$ .

Theorem 2.1 implies that, for every uniformly bounded characteristic of the industry, its time averages converge with probability one to a limit which is a deterministic function of the initial state in the sense given above. Unfortunately, – unlike for the model considered by Winter et al. (1997) –, some of the most important dynamic characteristics such as, for example, the total productive capacity, here are not uniformly bounded. Hence, Theorem 2.1 does not allow for immediate conceptual conclusions analogous to the ergodicity result presented in the foregoing work. On the other hand, one is still able to establish convergence of time averages of other aggregate variables such as the gross profit rate. Set

$$r_t = \frac{Q_t H(Q_t)}{\sum_{i=1}^{\infty} \sum_{j=1}^k q_{k+j}^i(t)}$$

for the gross profit rate at  $t \geq 1$ . Since there is no production at  $t = 0$ ,  $r_0 = 0$ . As a consequence of Theorem 2.1 we have the following statement.

**Corollary 2.1.** *If  $xH(x) \leq \text{const}$  for  $x \rightarrow \infty$ , then with probability one*

$$\frac{1}{n} \sum_{i=1}^n r_i \rightarrow \int_{R_{\infty}^+} \frac{Q(\mathbf{y})H(Q(\mathbf{y}))}{\sum_{i=1}^{\infty} \sum_{j=1}^k y_{k+j}^i} d\pi(\mathbf{Y}^0, d\mathbf{y}) \quad (2.7)$$

as  $n \rightarrow \infty$ . Here for a vector  $\mathbf{y}$  of the form (2.2)

$$Q(\mathbf{y}) = \sum_{s=1}^k \left[ y_{k+s}^1 \exp\{y\}/y_s^1 + \sum_{i=2}^{\infty} y_{k+s}^i / y_s^i \right].$$

Indeed,  $Q_t H(Q_t) \leq \text{const}$  by hypothesis. Also

$$\sum_{i=1}^{\infty} \sum_{j=1}^k q_{k+j}^i(t) \geq \sum_{i=1}^k \theta^{(t-1)k+i} \geq kc, \quad t \geq 1.$$

Hence  $r_t \leq \text{const}/kc < \infty$ . Which implies that (2.7) follows from (1.6).

Note that if  $\lim_{x \rightarrow \infty} xH(x) = H$ , then

$$\frac{1}{n} \sum_{i=1}^n r_i \rightarrow H \int_{R_\infty^+} \frac{d\pi(\mathbf{Y}^0, \mathbf{y})}{\sum_{i=1}^\infty \sum_{j=1}^k y_{k+j}^i}.$$

As mentioned, the total productive capacity of this industry unboundedly increases as time goes on. More precisely, we have the following statement.

**Lemma 2.1.** *The total productive capacity  $Q_t$  of the industry goes to infinity with probability one as  $t \rightarrow \infty$ .*

The lemma is proved in the Appendix.

Now let us study the mortality of firms in this competitive environment.

**Theorem 2.2.** *If  $\epsilon > 0$ , then every firm dies in a finite random time with probability one.*

The proof is given in the Appendix. The argument exploits the fact that the total productive capacity of the industry grows without bound, which implies that every firm with a fixed capital per unit of output starts shrinking from a finite random time with probability one.

Having shown the unbounded increase of productive capacity as time goes on, let us now characterize its rate of growth.

**Theorem 2.3.** *With probability one  $\exp\{-\alpha t\}Q_t \rightarrow \infty$  as  $t \rightarrow \infty$  for every  $\alpha < E\xi$ . Moreover, if*

$$\lim_{x \rightarrow \infty} H(x)x = 0, \tag{2.8}$$

*then with probability one  $\exp\{-\alpha t\}Q_t \rightarrow 0$  as  $t \rightarrow \infty$  for every  $\alpha > E\xi$ .*

The theorem is proved in the Appendix.

**Remark 2.1.** *The same result obtains if, instead of (2.8), we require that*

$$\limsup_{x \rightarrow \infty} H(x)x < d \frac{kvca}{\lambda b}. \tag{2.9}$$

*Now, if for a positive number  $H$  a demand function decreases as  $H/x$  for  $x \rightarrow \infty$ , then, keeping all other parameters of the model involved in the right hand side of (2.9) fixed, one can ensure (2.9) just increasing  $k$ . Thus, for such demand functions the second statement of Theorem 2.3 always holds true if the number of newcomers firms is large enough.*

Thus, we have showed that the productive capacity of the industry always grows faster than  $\exp\{t\alpha\}$  for every  $\alpha < E\xi$ . If, additionally, the demand function declines fast enough (see (2.8) or (2.9)), then the productive capacity always grows slower than  $\exp\{t\alpha\}$  for every  $\alpha > E\xi$ . Consequently, *the threshold value  $E\xi$  is the only candidate for the growth rate in the class of exponential functions of time.* This growth is entirely due to the increasing

efficiency of newcoming firms, and is not dependent upon the investment mechanism employed in the model. Interestingly, one is not able to prove that  $\exp\{-tE\xi\}Q_t$  converges to a limit as  $t$  increases. Indeed, here we are facing with a *variety of growth regimes*. Each of them is determined probabilistically by the development path (i.e. also a particular “technological trajectory”) and is deviating from the main trend,  $\exp\{tE\xi\}$ , by a value vanishing as  $t \rightarrow \infty$  faster than  $\exp\{-t\beta\}$  for every  $\beta > 0$ . Hence, *these deviations are not detectable if we restrict ourselves to the class of exponential functions of time*. To understand why this happens, let us consider the asymptotic behavior of the value  $V_t$  giving the lower bound for the total productive capacity since  $Q_{t+1} \geq V_t$ .

The random variable  $V_t$  is a product of the two other ones:  $\exp\{A_t\}$  and  $\Theta^t$ . The latter,  $\Theta^t$ , does not contribute to the growth rate since its distribution does not depend on  $t$ , being a convolution of  $k$  copies of  $\theta/\zeta$ . Hence, let us focus on  $A_t$ . We have that

$$A_t = \sum_{i=0}^t \xi^i = (t+1)E\xi + \sum_{i=0}^t \xi_*^i,$$

where  $\xi_*^i = \xi^i - E\xi^i$ ,  $i \geq 0$ . The law of iterated logarithm (see Loève (1955), p. 260) implies that

$$P\left\{\limsup_{t \rightarrow \infty} \frac{|\sum_{i=0}^t \xi_*^i|}{\sqrt{2D\xi(t+1) \ln \ln D\xi(t+1)}} = 1\right\} = 1,$$

taking into account that the random variables  $\xi$  and  $\xi - E\xi$  have the same variance. Consequently, there are subsequencies  $t_n^+$ ,  $n \geq 1$ , and  $t_n^-$ ,  $n \geq 1$ , such that with probability one

$$\lim_{n \rightarrow \infty} \frac{\sum_{i=0}^{t_n^+} \xi_*^i}{\sqrt{2D\xi(t_n^+ + 1) \ln \ln D\xi(t_n^+ + 1)}} = 1$$

and

$$\lim_{n \rightarrow \infty} \frac{\sum_{i=0}^{t_n^-} \xi_*^i}{\sqrt{2D\xi(t_n^- + 1) \ln \ln D\xi(t_n^- + 1)}} = -1.$$

Consequently, as  $n \rightarrow \infty$

$$\exp\{A_{t_n^+} - (t_n^+ + 1)E\xi\} \sim \exp\left\{\sqrt{2D\xi(t_n^+ + 1) \ln \ln D\xi(t_n^+ + 1)}\right\} \quad (2.10)$$

and

$$\exp\{A_{t_n^-} - (t_n^- + 1)E\xi\} \sim \exp\left\{-\sqrt{2D\xi(t_n^- + 1) \ln \ln D\xi(t_n^- + 1)}\right\}$$

with probability one. Thus, what remains in  $\exp\{A_t\}$  if we remove its main part,  $\exp\{(t+1)E\xi\}$ , can be converging (along certain sequencies) with probability one to both infinity and zero. Hence, the remaining value does not have any definite rate of growth as time



goes on. Also, (2.10) shows that there is no hope to find a finite limit for  $\exp\{-tE\xi\}Q_t$  as  $t \rightarrow \infty$ . Indeed, since  $Q_{t+1} \geq V_t$ , by (2.10) we get that with probability one

$$\exp\{-t_n^+ E\xi\}Q_{t_n^+} \geq \exp\{-t_n^+ E\xi\}V_{t_n^+-1} \rightarrow \infty \quad \text{as } n \rightarrow \infty.$$

Hence, we find here a path-dependency property of the model. While we have proved that the threshold value of the rate of growth is exponential, it is history which selects the exact value of such rate.

### 2.3 Different time-scales of technological learning

So far one has assumed that production, entry and learning (by entrants) all take place on the same time-scale (i.e. at each “period”). However, the model can be extended to account also for a timing of innovative “events” asynchronous vis-à-vis production and entry. Suppose, for example, that the enlargement of innovative opportunities occurs at a slower pace.

This phenomenon may be formalized in the following way.

Let  $T_n$ ,  $n \geq 0$ , be an increasing sequence of positive integers such that  $T_0 = 0$  and  $T_{n+1} - T_n \geq 1$ . Also, let

$$A_{n+1} = A_n + \xi^{n+1}, \quad n \geq 0,$$

and levels of capital per unit of output of all firms coming during the time interval  $(T_n, T_{n+1})$  from the distribution concentrated on  $[\exp\{-A_n\}a, \exp\{-A_n\}b]$ . So, capital ratios of the  $k$ -firms coming at time  $t$  are determined as  $\exp\{-A_n\}\zeta^i$ ,  $tk+1 \leq i \leq (t+1)k$  provided that  $T_n \leq t < T_{n+1}$ . Here  $\xi^n$ ,  $n \geq 0$ , and  $\zeta^i$ ,  $i \geq 1$ , are mutually independent collections of realizations of  $\xi$  and  $\zeta$ .

The sequence  $T_n$ ,  $n \geq 0$ , characterizes the slower pace of generation of potential innovations as compared to the timing of manufacturing “periods”. Hence the main component of the rate of growth of capital productivity for individual entrants and for the whole industry (under some additional assumptions cf. Theorem 2.3 and Remark 2.1) as  $t \rightarrow \infty$  is determined by the function  $\exp\{T^{-1}(t) \cdot E\xi\}$ . Here  $T^{-1}(\cdot)$  designates an inverse function to  $T(\cdot) : n \rightarrow T_n$ . For example, if  $T_n = s \cdot n$  for an integer  $s > 1$ , then

$$\lim_{t \rightarrow \infty} \frac{\exp\{T^{-1}(t) \cdot E\xi\}}{\exp\{\frac{E\xi}{s}t\}} = 1.$$

Similarly, if  $T_n$  equals to the integer part of  $\exp\{\alpha \cdot n\}$  for a real  $\alpha > 0$  (and for sufficiently large  $n$ ), then

$$\lim_{t \rightarrow \infty} t^{-\frac{E\xi}{\alpha}} \exp\{T^{-1}(t) \cdot E\xi\} = 1.$$

Clearly, asynchronous (and slower) paces of expansion of innovative opportunities will imply also slower rates of growth of output of the industry under consideration.

## 2.4 A computer simulation

To illustrate some quantitative properties of the model, let us consider a computer simulation<sup>7</sup>.

The run presented here has the following parametrization:  $k = 12$ ,  $v = 1$ ,  $d = 0.3$ ,  $\lambda = 0.6$ ,  $a = 2$ ,  $b = 6$ ,  $c = 0.02$ ,  $h = 0.04$ ,  $\epsilon = 0.5$ . The demand function is  $H(x) = 4.1667 \exp(-0.1x)$ . The random variable  $\zeta$  is uniformly distributed over  $[a, b]$ ,  $\xi$  was uniformly distributed over  $[0, 0.01]$ , and the capitals of newcomers firms are uniformly distributed over  $[c, h]$ .

Figures 2.1 and 2.2 present the dynamic of prices. While prices decline to 0 with persistent fluctuations, the total productive capacity grows over time with qualitatively similar fluctuating patterns, whereby the amplitude of fluctuations themselves does not dampen out over time (in fact, in absolute terms, they increase): see Figures 2.3 and 2.4.

Figure 2.5 illustrates the dynamic of the number of firms in the industry. After an initial period of growth it declines, and then fluctuates around a fixed level. As already noted in Winter et al. (1997), phenomena looking like ‘shakeouts’ at some point in the early history of an industry appear to be a rather generic property plausibly associated with a changing selection regime. At the start, the ‘carrying capacity’ of the market exceeds the effective supply. So, in a sense, there is ‘room for everyone’. At some point, as total supply increases, competitive conditions become more stringent and market selection rather quickly starts affecting growth and survival of lower-efficiency firms<sup>8</sup>. Figures 2.6 and 2.7 provide two snapshots, measured in terms of productive capacity for  $t = 50$  and  $t = 500$ , where firms are ranked according to their size. What is observed here is something rather close to the Pareto law (see, for example, Ijiri and Simon (1974))<sup>9</sup>.

---

<sup>7</sup>A lot of simulation of this kind has been undertaken based on a program from the Laboratory for Simulation Development (LSD), a package providing an environment for implementation of simulation models developed at the International Institute for Applied Systems Analysis (IIASA). It is publicly available via Internet (see also Valente (1997)). We have tried several runs with the same parametrization (since each ‘history’ is a particular sample path of the stochastic process defined by the above model) and we also experimented with different parametrizations. Even if we did not perform any more rigorous sensitivity analysis, the qualitative feature of the example which follows hold throughout all the performed experiments.

<sup>8</sup>In many respects, the phenomenon recalls the “density dependent selection” emphasized in “organizational ecology” models (cf. among others Hannan and Freeman (1989) and Carroll (1997)).

<sup>9</sup>Namely, in one of its versions, for a sample of firms ranked according to their size, the size  $s$  and the

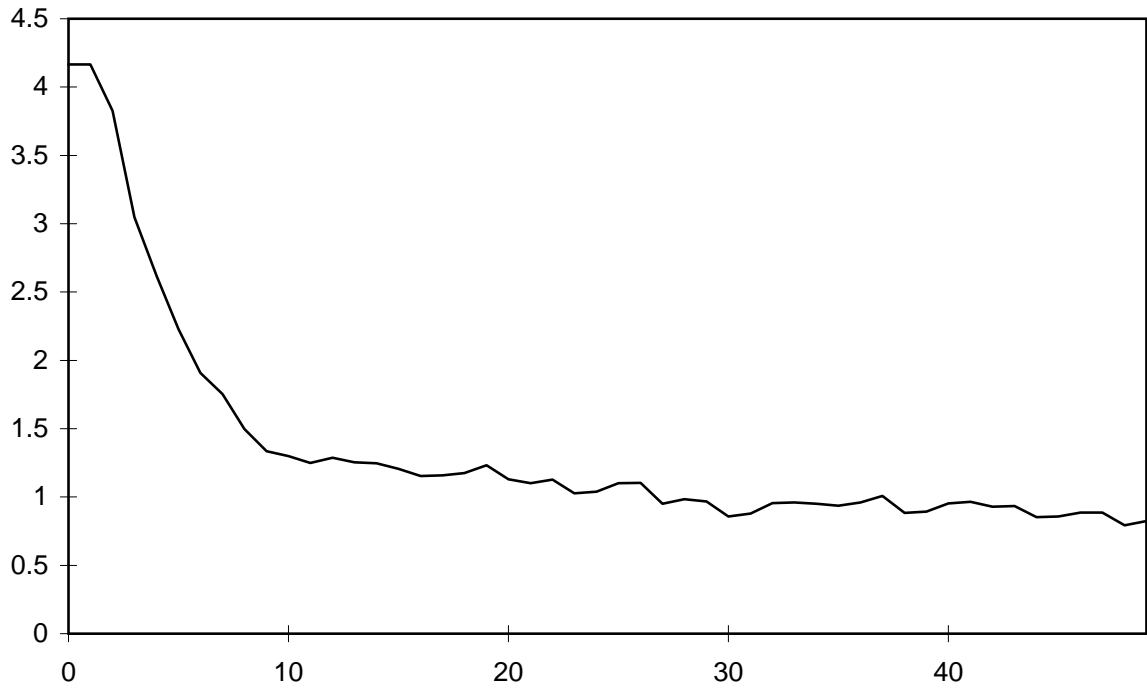


Figure 2.1: The price  $H(Q_t)$  for  $1 \leq t \leq 50$ .

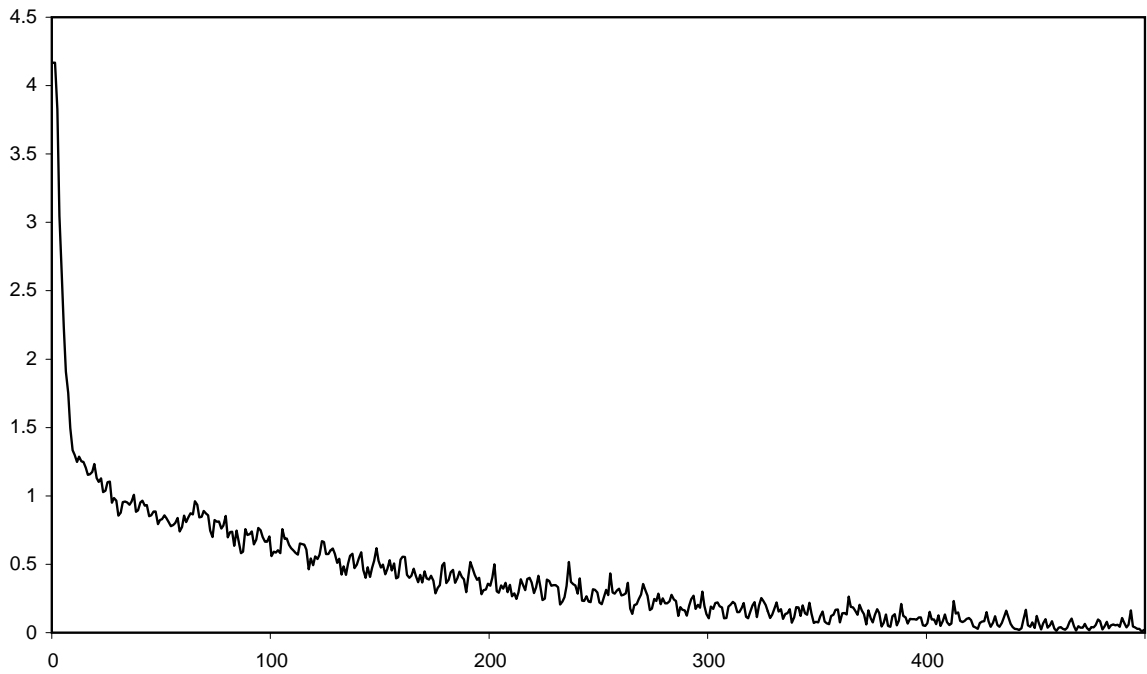


Figure 2.2: The price  $H(Q_t)$  for  $1 \leq t \leq 500$ .

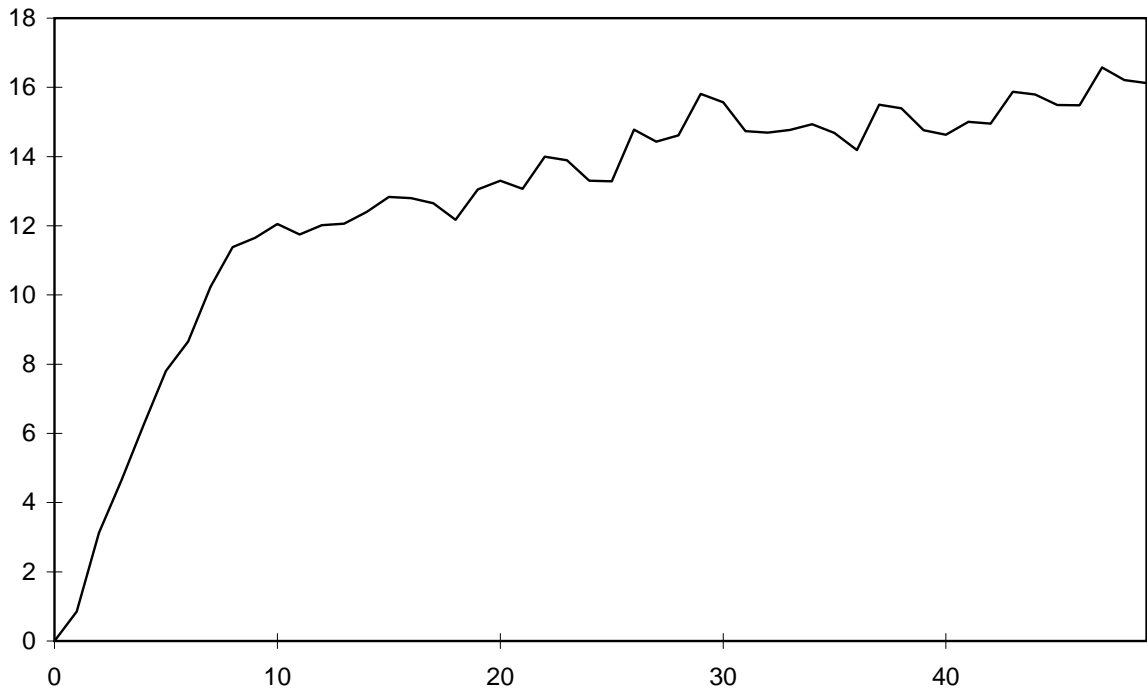


Figure 2.3: Productive capacity for  $1 \leq t \leq 50$ .

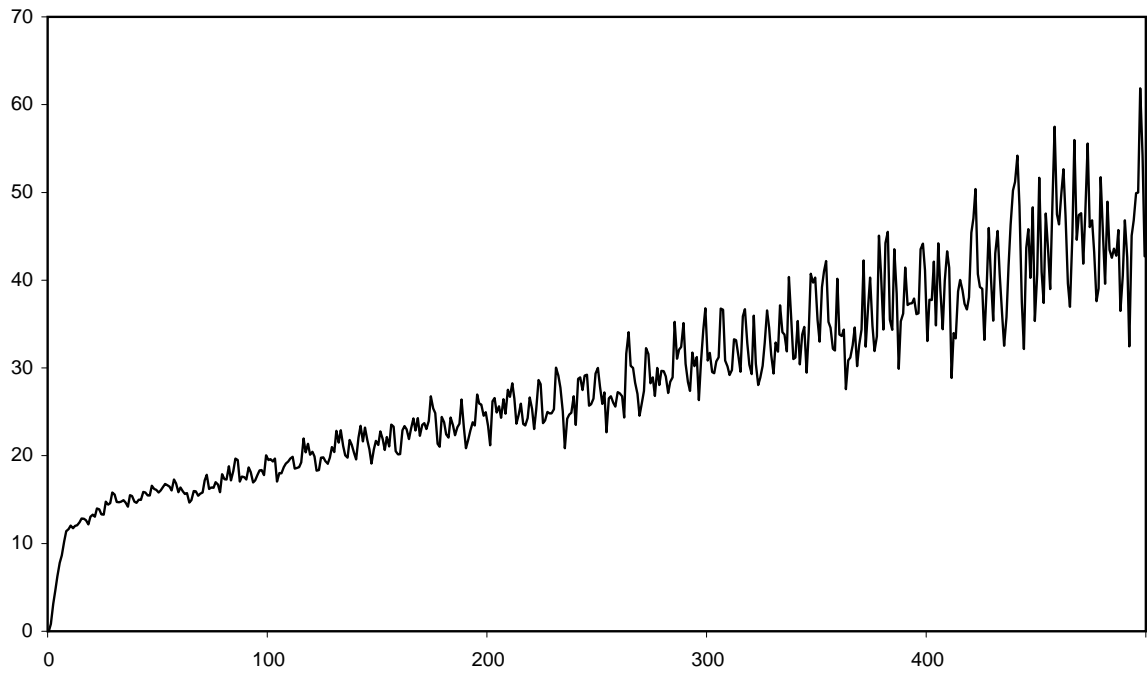


Figure 2.4: Productive capacity for  $1 \leq t \leq 500$ .

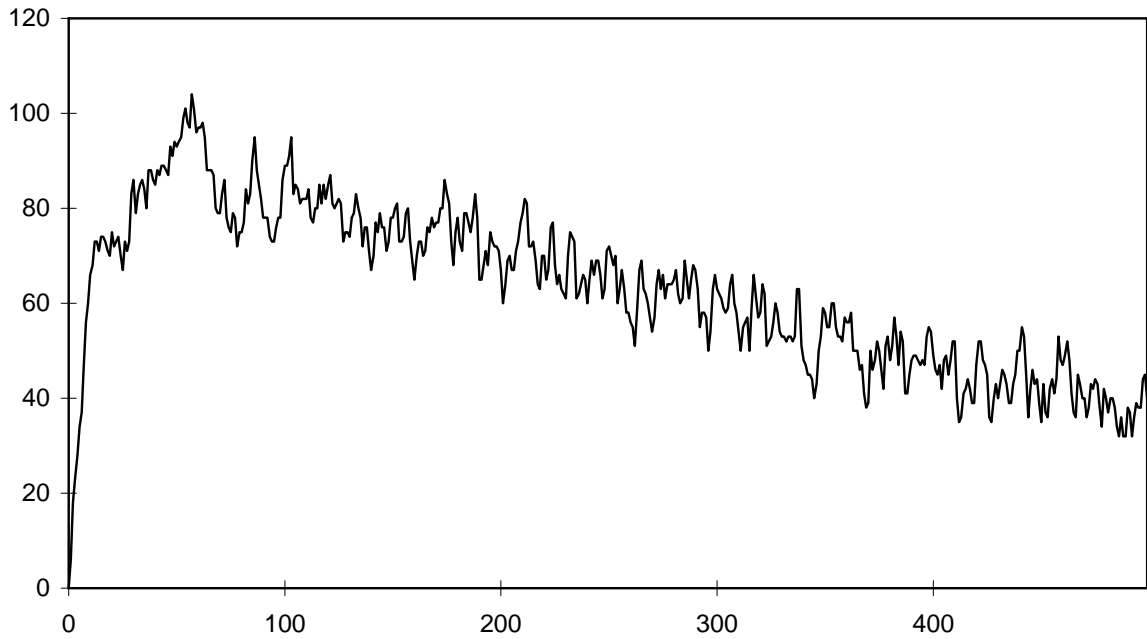


Figure 2.5: Total number of firms  $0 \leq t \leq 500$ .

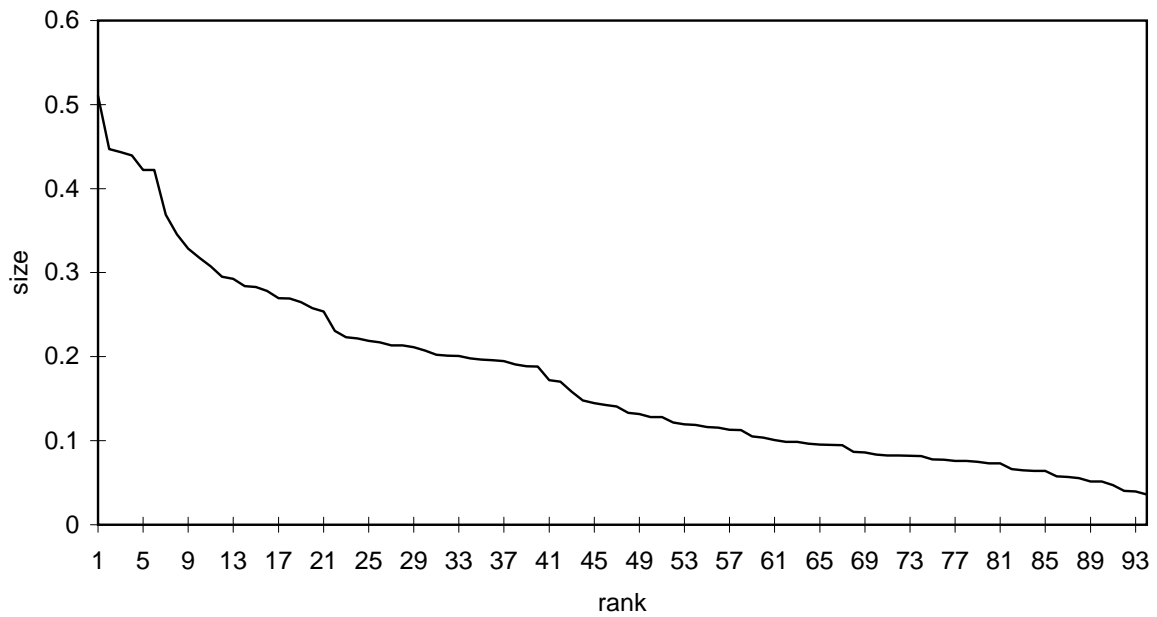


Figure 2.6: Size distribution for  $t = 50$ .

Figure 2.8 provides with the life time distribution of firms for  $1 \leq t \leq 500$  which died before  $t = 500$ . Life time here means the number of production cycles the firm performs before it dies. (So for example, in Figure 2.8, around 18% of all firms which were born and died before  $t = 500$ , did die when they were 6-periods old, etc.) Again, the mortality patterns appear to be quite in tune with the evidence, with high mortality rates shortly rank  $r$  of a firm are related in the following manner  $sr^\beta = A$ , where  $\beta$  and  $A$  are positive constants.

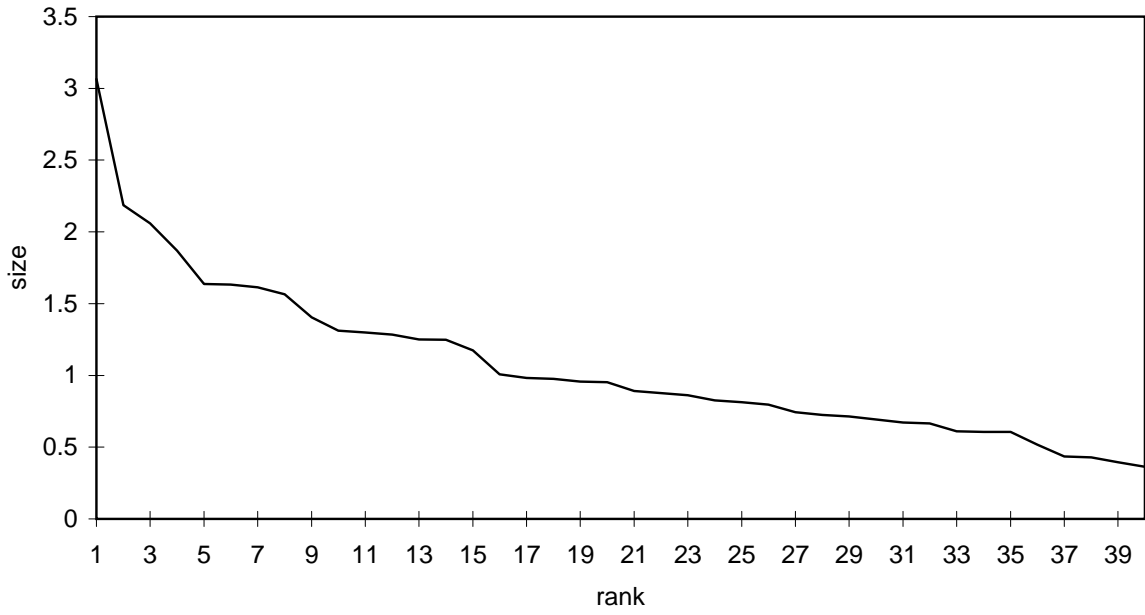


Figure 2.7: Size distribution for  $t = 500$ .

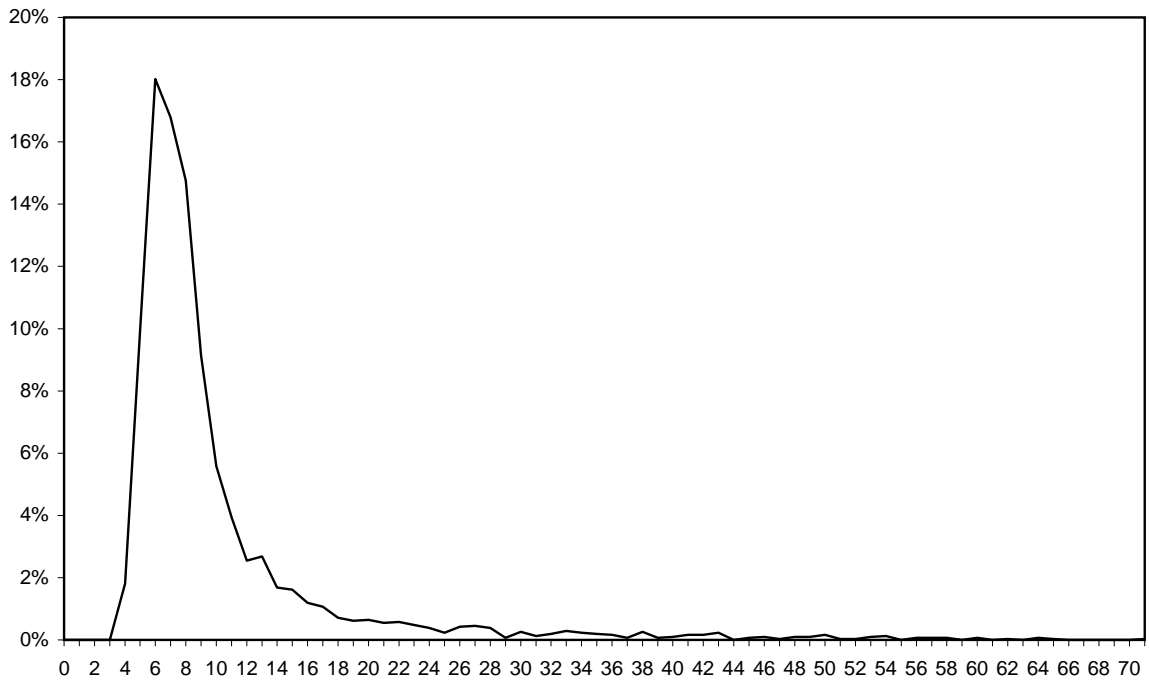


Figure 2.8: Life time distribution of firms for  $1 \leq t \leq 500$ .

after birth and a (relative thin) tail of firms with much higher longevity (more on this type of evidence in Geroski (1995), Baldwin (1995), Hannan and Freeman (1989), and Carroll (1997)). As known, this survival patterns are sometimes interpreted – especially in the “organizational ecology” perspective – as the outcome of the differential adaptation of subsets of firms in the population. Notwithstanding the likely importance of the latter phenomena, our results here seem to suggest that a distribution of mortality rates which peaks in the early infancy, with a long but thin tale of old survivors might be a rather generic property of a large class of evolutionary processes characterized by heterogenous entry and market selection (cf. also the simulation results in Winter et al. (1997))<sup>10</sup>.

### 3 An alternative dynamic setting: increasing productivity of labor

#### 3.1 Main assumptions

Now we turn to symmetric opposite assumptions compared to the model above and assume that learning concerns only labor productivity<sup>11</sup>. As above, we have an industry evolving in discrete time  $t = 0, 1, \dots$ . At  $t = 0$  there are no firms ready to manufacture, but  $k$  firms come to the industry. They will start producing at  $t = 1$ . At time  $t \geq 1$  the industry consists of  $n_t$  firms which are involved in manufacturing and new firms that enter at  $t$  and will participate in the production process from  $t + 1$  on. As in the earlier version of the model we have uniformly for the whole industry:

$v$  - price per unit of physical capital,  $v > 0$ ,

$d$  - depreciation rate,  $0 < d \leq 1$ ,

$C$  - capital per unit of output,  $C > 0$ .

Here, however, the competitiveness of any firm in the industry is determined by its variable costs per unit of output. Let us designate it by  $m_i$  for the  $i$ -th firm. *In this competitive environment only newcomers learn how to improve (in probability) the productivity of labor.* As time goes on the lowest variable costs present in the industry decreases. In particular, we have the following stochastic mechanism defined endogenously.

Consider a nonnegative random variable  $\xi$  with a finite variance  $D\xi$ . Set  $\zeta$  for a random variable distributed over  $[a, b]$ ,  $0 < a < b < \infty$ . For each time instant  $t \geq 0$  we allow for the industry to have  $k \geq 1$  new firms whose variable costs are randomly determined as

---

<sup>10</sup>A *fortiori*, one should expect this property to apply also to those circumstances wherein also incumbents are allowed to learn, as in a forthcoming model by the authors, currently in progress.

<sup>11</sup>An assumption, which together with the constancy of capital/output ratios, seems nearer the empirical evidence.

$\exp\{-A_t\}\zeta^i$ ,  $tk+1 \leq i \leq (t+1)k$ . Here  $A_{t+1} = A_t + \xi^{t+1}$ ,  $t \geq 0$ ,  $A_0 = \xi^0$ . Also,  $\xi^t$ ,  $t \geq 0$ , and  $\zeta^i$ ,  $i \geq 1$ , are mutually independent collections of realizations of  $\xi$  and  $\zeta$ . One sees that all variable costs feasible for newcomers at time  $t$  belong to  $[\exp\{-A_t\}a, \exp\{-A_t\}b]$ . Their distribution over this interval is governed by a realization of  $\exp\{-A_t\}\zeta$ . Thus  $A_t$  characterizes in a probabilistic manner the highest productivity of labor attainable by newcomers in the industry at time  $t$ .

Alike in the model above there is a decreasing continuous demand function  $p = H(q)$ , mapping  $[0, \infty)$  in  $[0, H(0)]$  such that  $H(0) < \infty$  and  $H(q) \rightarrow 0$  as  $q \rightarrow \infty$ .

Set  $Q_t^i$  for the productive capacity of the  $i$ -th firm and  $m_i$  for its variable costs. Then

$$Q_t = \sum_{i=1}^{n_t} Q_t^i, \quad t \geq 1, \quad Q_0 = 0,$$

is the total productive capacity involved in manufacturing at  $t$ . The gross profit per unit of output at  $t$  for the  $i$ -th firm is obviously  $H(Q_t) - m_i$ . Its total gross investment per unit of capital is  $\lambda \max[H(Q_t) - m_i, 0]/vC$ . As above, the constant  $\lambda$  captures the share of the gross profit which is re-invested.

For each value of variable costs generated at  $t$  we shall allow a single entrant. The initial capitals of entrants are independent realizations  $\theta^i$ ,  $i \geq 1$ , of a random variable  $\theta$  distributed over  $[c, h]$ ,  $0 < c < h < \infty$ . It is assumed that the realizations of  $\xi$ ,  $\zeta$  and  $\theta$  are mutually independent random variables.

Again, as above, the death mechanism implies that a firm is dead at time  $t$  and does not participate in manufacturing from  $t + 1$  on if its capital at  $t$  is less than  $\epsilon c$ ,  $\epsilon \in (0, 1]$ . The situation without mortality corresponds to the limit case when  $\epsilon = 0$ .

### 3.2 A dynamic balance equation for industry evolution

Consider a firm  $i$  that is manufacturing at time  $t$ . Our investment rule implies that at the end of this production period its capital reads

$$Q_t^i C \left\{ 1 - d + \frac{\lambda}{vC} \max[H(Q_t) - m_i, 0] \right\}.$$

If this value does not drop below the death threshold  $\epsilon c$ , the firm continues to manufacture at  $t + 1$ . Otherwise it dies.<sup>12</sup> Hence,

$$Q_{t+1}^i = Q_t^i \left\{ 1 - d + \frac{\lambda}{vC} \max[H(Q_t) - m_i, 0] \right\} \chi_{Q_t^i \left\{ 1 - d + \frac{\lambda}{vC} \max[H(Q_t) - m_i, 0] \right\} \geq \epsilon c / C}, \quad (3.1)$$

---

<sup>12</sup>In a possibly more realistic setting one could add a sort of bankruptcy rule stating that firms die, even when their size is greater than  $\epsilon c$ , if their gross profits are negative (i.e.  $[H(Q_t) - m_i] < 0$ ). However, this modification would not qualitatively change the results that follow: rather it would simply affect death rates of 'uncompetitive' firms.



where  $\chi_{Q_i^i\{1-d+\frac{\lambda}{vC}\max[H(Q_t)-m_i,0]\}\geq\epsilon c/C}$  is the indicator function of the event that the firm continues to manufacture given the above death rule and the total productive capacity of the industry involved in manufacturing.

This equation describes the evolution of a single firm in business. In analogy with the formalization of the foregoing section, let us proceed to a dynamic representation of the model that reserves room for all feasible development paths of the industry.

For the space  $R_\infty$  introduced in section 2, define an automorphism  $\mathbf{D}(\cdot)$  on  $R_\infty$  such that

$$\mathbf{D}(\mathbf{q}) = \mathbf{D}^1(\mathbf{q}) \otimes \left[ \bigotimes_{i=2}^{\infty} \mathbf{D}^i(\mathbf{q}) \right],$$

with  $\mathbf{D}^1(\cdot) : R_\infty \mapsto R \otimes R_1 \otimes R_2$  and  $\mathbf{D}^i(\cdot) : R_\infty \mapsto R_i, i \geq 3$ . Set

$$D_1^1(\mathbf{q}) = q, \quad D_s^1(\mathbf{q}) = 0, \quad 2 \leq s \leq 2k+1, \quad D_{2k+j+1}^1(\mathbf{q}) = q_j^1 \exp\{-q\} \chi_{\mathcal{A}_j^1(\mathbf{q})},$$

$$D_{3k+j+1}^1(\mathbf{q}) = \left\{ q_{k+j}^1 \left[ 1 - d + \frac{\lambda}{vC} \max \left[ H \left( \sum_{p=1}^{\infty} \sum_{s=1}^k q_{k+s}^p \right) - q_j^1 \exp\{-q\}, 0 \right] \right\} \chi_{\mathcal{A}_j^1(\mathbf{q})},$$

$$D_j^i(\mathbf{q}) = q_j^i \chi_{\mathcal{A}_j^i(\mathbf{q})}, \quad D_{k+j}^i(\mathbf{q}) = q_{k+j}^i \left\{ 1 - d + \frac{\lambda}{vC} \max \left[ H \left( \sum_{p=1}^{\infty} \sum_{s=1}^k q_{k+s}^p \right) - q_j^i, 0 \right] \right\} \chi_{\mathcal{A}_j^i(\mathbf{q})},$$

where  $1 \leq j \leq k, i \geq 2, \mathcal{A}_j^1(\mathbf{q})$  designates the relation

$$q_{k+j}^1 \left\{ 1 - d + \frac{\lambda}{vC} \max \left[ H \left( \sum_{p=1}^{\infty} \sum_{s=1}^k q_{k+s}^p \right) - q_j^1 \exp\{-q\}, 0 \right] \right\} \geq \epsilon c/C$$

and  $\mathcal{A}_j^i(\mathbf{q})$  stands for the relation

$$q_{k+j}^i \left\{ 1 - d + \frac{\lambda C}{v} \max \left[ H \left( \sum_{p=1}^{\infty} \sum_{s=1}^k q_{k+s}^p \right) - q_j^i, 0 \right] \right\} \geq \epsilon c/C.$$

We restrict ourselves to vectors  $\mathbf{q}$  defined by (2.2) belonging to

$$R_\infty^+ = [0, \infty) \otimes \left[ \bigotimes_{i=1}^{\infty} R_i^+ \right]$$

and set  $H(\infty) = 0$  for the case when the iterated sum is infinite.

The conceptual interpretation of the automorphism is very similar to the one given earlier on. The  $2k \times 2k$  boxes contain data concerning cohorts, that is groups of firms which were born simultaneously. The only exception is the first box containing two cohorts and additionally (its first coordinate) the value capturing the highest productivity of labor attainable in the industry. In each cohort the first  $k$  coordinates are the variable costs and the last  $k$  coordinates represent productive capacities of corresponding firms. The adjustment rule for productive capacities is the same as in (3.1). (Again, the indicators

prevent from carrying over the data related dead firms.) The relation  $\mathcal{A}_j^i(\mathbf{q})$  means that a firm which is placed at the  $j$ -th position of the  $i$ -th cohort continues to manufacture given the state of the industry  $\mathbf{q}$ .

Define infinite dimensional random vectors  $\mathbf{Y}^t$ ,  $t \geq 0$ , setting

$$Y_1^t = \xi^t, \quad Y_{i+1}^t = \zeta^{tk+i}, \quad Y_{k+i+1}^t = \theta^{tk+i}, \quad i = 1, 2, \dots, k. \quad Y_j^t = 0 \quad j \geq 2k + 2.$$

The evolution of the industry is as follows

$$\mathbf{q}(t+1) = \mathbf{D}(\mathbf{q}(t)) + \mathbf{Y}^{t+1}, \quad t \geq 0, \quad \mathbf{q}(0) = \mathbf{Y}^0, \quad (3.2)$$

Since  $\mathbf{Y}^t$  are independent in  $t$ , this expression defines a Markov process on  $R_\infty^+$ . Moreover, it is homogeneous in time since the deterministic operator  $\mathbf{D}(\cdot)$  as well as the distribution of  $\mathbf{Y}^t$  do not depend on time.

This phase space is formed by the value characterizing the highest productivity which is potentially attainable so far in the industry, variable costs and productive capacities of all firms that stay alive.

### 3.3 Long run behavior of the industry

As above, Doeblin's condition holds here if we set  $\phi(\mathcal{A}) = P\{\mathbf{Y}^* \in A \otimes A_1\}$  for a set  $\mathcal{A}$  given by (2.4). Here  $\mathbf{Y}^*$  designates a  $(2k+1)$ -dimensional vector whose coordinates coincide with first  $2k+1$  coordinates of a generic vector  $\mathbf{Y}$  having the same distribution as  $\mathbf{Y}^t$ ,  $t \geq 0$ . The following result establishes the ergodicity of process (3.1).

**Theorem 3.1.** *For every set  $\mathcal{A}$  given by (2.4) with probability one*

$$\frac{1}{n} \sum_{t=1}^n p^t(\mathbf{Y}^0, \mathcal{A}) \rightarrow \pi(\mathbf{Y}^0, \mathcal{A}) \quad (3.3)$$

as  $n \rightarrow \infty$ . Here  $\pi(\mathbf{Y}^0, \cdot)$  is a stochastic probability measure (since it depends on  $\mathbf{Y}^0$ ), being  $\pi_\mathcal{L}(\cdot)$  for an elementary outcome  $\omega \in \Omega$  as long as  $\mathbf{Y}^0$  belongs for this elementary outcome to an ergodic set  $\mathcal{L}$ . Moreover,  $p^t(\cdot, \cdot)$  designates the transition probability in  $t$  steps of process (3.2).

The implications of this theorem in terms of path-dependency (or lack of it) are identical to those discussed above with reference to Theorem 2.1.

Theorem 3.1 implies that for every uniformly bounded characteristic of the industry its time averages converge with probability one to a limit which is a deterministic function of the initial state in the sense given above.

Let us now show that the total productive capacity of the industry is uniformly bounded. Since the minimal size of a firm is bounded by the death threshold, this implies uniform boundedness of the total number of firms in business (if  $\epsilon > 0$ ). Hence, we shall

be able to derive relations similar to those given in Winter et al. (1997) on convergence of time averages regarding some important characteristics of the industry.

Set  $\bar{Q} = H^{-1}(dvC/2\lambda)$  and  $\hat{Q} = \max(\bar{Q}, 2kh/Cd)$ , where  $H^{-1}(\cdot)$  designates the inverse function.

**Lemma 3.1.** *With certainty  $Q_t \leq Q_*$  for  $t \geq 1$ , where  $Q_* = \hat{Q}[1 + \lambda H(0)/vC] + kh/C$ .*

*Proof.* Notice that  $Q_1 \leq kh/C \leq Q_*$ . Equations (3.1) and the assumption concerning the entry process imply that

$$Q_{t+1} \leq Q_t \left[ 1 - d + \frac{\lambda}{vC} H(Q_t) \right] + \frac{kh}{C}, \quad t \geq 1.$$

If  $Q_t \geq \hat{Q}$  for some  $t \geq 1$ , we get that  $Q_{t+1} \leq \hat{Q}$ . Otherwise, if  $Q_t < \hat{Q}$ ,

$$Q_{t+1} \leq Q_t \left[ 1 + \frac{\lambda}{vC} H(Q_t) \right] + \frac{kh}{C} < \hat{Q} \left[ 1 + \frac{\lambda}{vC} H(0) \right] + \frac{kh}{C}.$$

The lemma is proved.

As a simple consequence of Theorem 3.1 and Lemma 3.1 we have the following result.

**Corollary 3.1.** *With probability one*

$$\frac{1}{n} \sum_{t=1}^n Q_t \rightarrow \int_{\tilde{R}_+^\infty} \sum_{i=1}^{\infty} \sum_{p=1}^k y_{k+p}^i d\pi(\mathbf{Y}^0, \mathbf{y})$$

and, if  $\epsilon > 0$ ,

$$\frac{1}{n} \sum_{t=1}^n \nu_t \rightarrow \int_{\tilde{R}_+^\infty} \sum_{i=1}^{\infty} \sum_{p=1}^k \chi_{A_p^i(\mathbf{y})} d\pi(\mathbf{Y}^0, \mathbf{y})$$

as  $n \rightarrow \infty$ . Here  $\nu_t$  designates the number of firms in business at  $t$ . Also, for a vector  $\mathbf{q}$  given by (2.2)

$$\tilde{R}_+^\infty = \left\{ \mathbf{q} \in R_+^\infty : \sum_{i=1}^{\infty} \sum_{p=1}^k q_{k+p}^i \leq Q_* \right\}.$$

The relation  $A_p^i(\mathbf{y})$  is defined as above.

Indeed, the infinite sum involved in the first limit is bounded by  $Q_*$  by Lemma 3.1. The sum involved in the second limit does not exceed  $CQ_*/\epsilon c < \infty$  if  $\epsilon > 0$ .

Let us turn to the death process.

**Theorem 3.2.** *If  $\epsilon > 0$ , then each firm dies in a finite random time with probability one.*

The proof is given in the Appendix. The intuition is the following.

For simplicity let  $\epsilon < 1$ . (If  $\epsilon = 1$ , we need a more complicated argument.) Each firm comes with a capital that exceeds  $c$ . If it dies, at the moment when this happens its capital does not exceed  $\epsilon c$ . Since firms with lower variable costs per unit of output have higher investment rates, a notional firm that lives infinitely long would shrink at least  $\epsilon$  times

during the life time of a generic firm characterized by the lowest variable costs per unit of output at some particular time (which nonetheless dies in a finite time). Consequently, to prove that no firm can live infinitely long, it is enough to show that:

- a) the capital of every alive firm is bounded from above by a constant;
- b) for every level of variable costs per unit of output there is an infinite chain of firms with lower variable costs that are coming and dying one after another.

The capital of an alive firm is bounded from above by the total capital of the industry which, in turn, is bounded with certainty. Thus, a) holds. The capital of an alive firm is bounded from below by the death threshold and the total capital of the industry is bounded with certainty. Hence the total number of alive firms is bounded with certainty. Consequently, starting from a finite random time  $\tau$  every newcoming firm dies in a finite time. According to the postulated learning rule, for every given level of variable costs per unit of output, all newcoming firms have lower variable costs starting from a finite random time  $\tau'$ . Thus, from  $\max(\tau, \tau')$  onward we have the chain required by b).

Interestingly, in this model the total productive capacity can be indefinitely growing if we drop the assumption that  $\lim_{x \rightarrow \infty} H(x) = 0$ . Namely, let  $\lim_{x \rightarrow \infty} H(x) = H$  and  $\lambda H/vC > d$ . Then every firm whose variable costs are less than  $H - vCd/\lambda$  will unboundedly grow. Hence, starting from a finite random time with probability one every newcomer will never die, but rather unboundedly grow. The intuition behind this property is the following. As  $H(x)$  approaches its asymptotic value, demand elasticities grow and so does the “carring capacity” of the market. Correspondingly, selective pressures get weaker. Since output prices have a positive lower bound, if gross margin are high enough (that is if variable costs are low enough) as to sustain positive net investments, then firms which fulfill these conditions will indefinitely survive (and indeed grow), irrespectively of the fact that an infinite number of even more efficient firms will enter thereafter. One will still observe a dynamic on market shares (with all firms having eventually their shares tending to zero), but given an infinitely expanding market, the number of firms will also be allowed to infinitely grow, and mortality will cease to operate as a selection device. Moreover, the total productive capacity of the economy will also grow in the foregoing circumstances faster than  $\gamma^t$  as  $t \rightarrow \infty$  for every  $0 < \gamma < 1 - d + \lambda H/vC$  but slower than  $(1 - d + \lambda H/vC)^t$ . In these circumstances,  $(1 - d + \lambda H/vC)^t$  establishes the upper bound of all feasible rates of growth, with history selecting among them. Hence, some (bounded) path-dependency property of industrial dynamics reappears, as soon as the size of the market is allowed to endlessly grow.

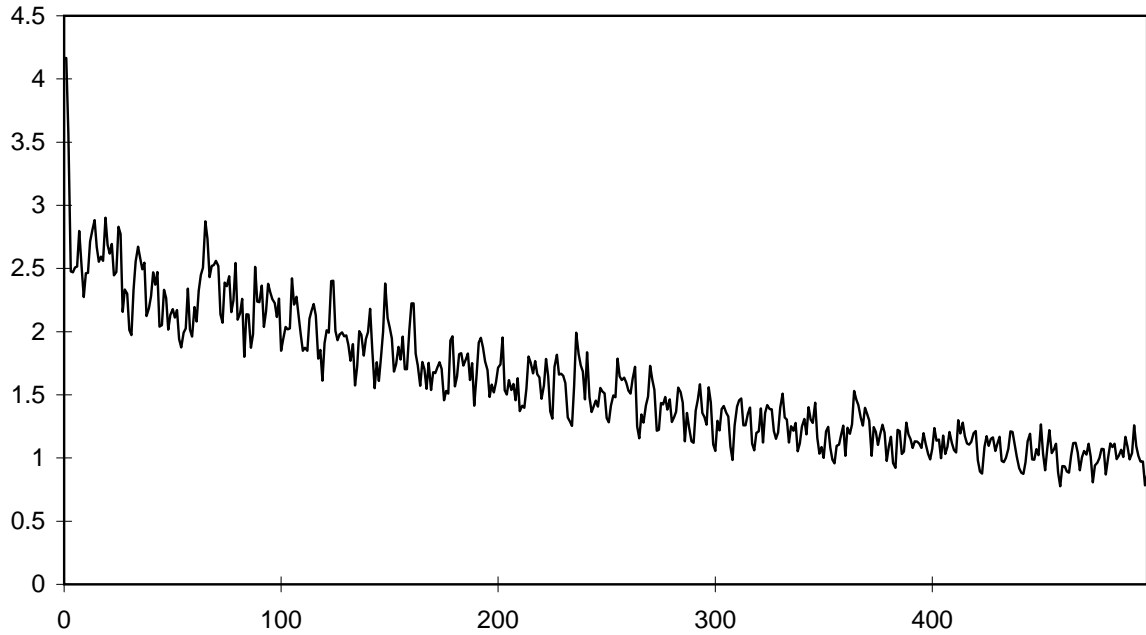


Figure 3.1: The price  $H(Q_t)$  for  $1 \leq t \leq 500$ .

### 3.4 A numerical run of the model

Let us turn again to an illustration with a computer simulation (for details cf. footnote 6, above).

The run presented here has the following parametrization:  $k = 12$ ,  $v = 1$ ,  $C = 2$ ,  $d = 0.3$ ,  $\lambda = 0.6$ ,  $\epsilon = 0.5$ . The demand function is  $H(x) = 4.1667 \exp(-0.1x)$ . The random variable  $\zeta$  is uniformly distributed over  $[2, 6]$ ;  $\xi$  is uniformly distributed over  $[0, 0.01]$ , and the capitals of newcomers firms are uniformly distributed over  $[0.02, 0.04]$ . Figures 3.1 and 3.2 present the price dynamics, while Figures 3.3 and 3.4 show for the same time interval the dynamics of the total productive capacity. The evolution of the total number of firms is shown in Figures 3.5 and 3.6, with Figures 3.7 and 3.8 depicting size distributions at  $t = 50$  and  $t = 500$ . (For prices, productive capacity and number of firms we report also longer simulation runs, with  $t = 1000$ , for a clearer illustration of the long term properties toward which the system tends to converge.) Finally, Figure 3.9 provides the life time distribution for firms that die before  $t = 500$ .

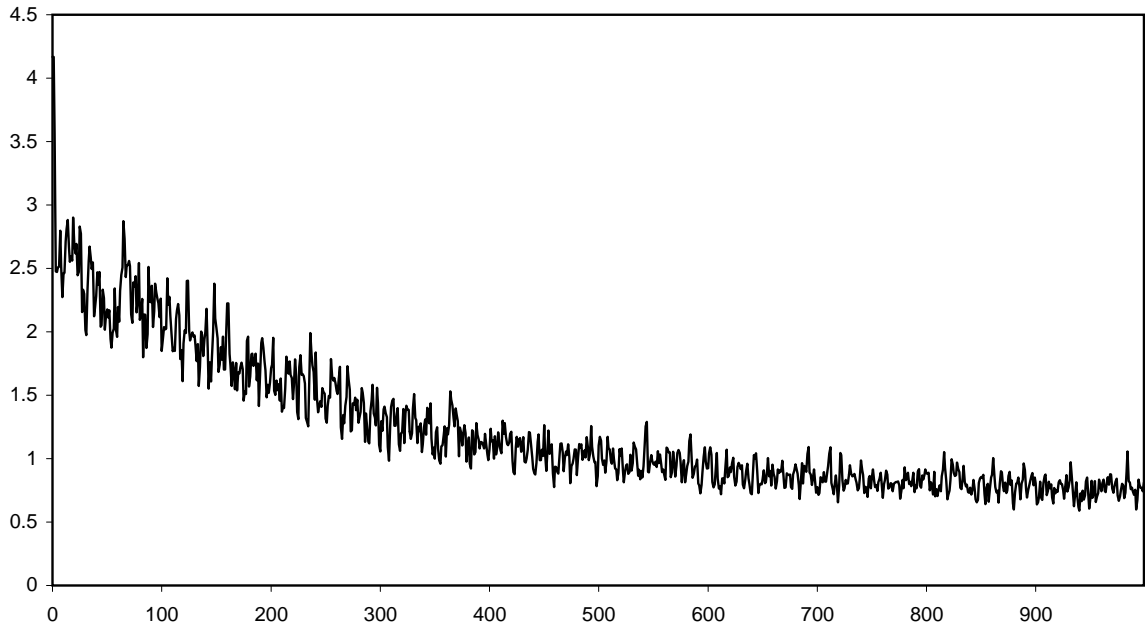


Figure 3.2: The price  $H(Q_t)$  for  $1 \leq t \leq 1000$ .

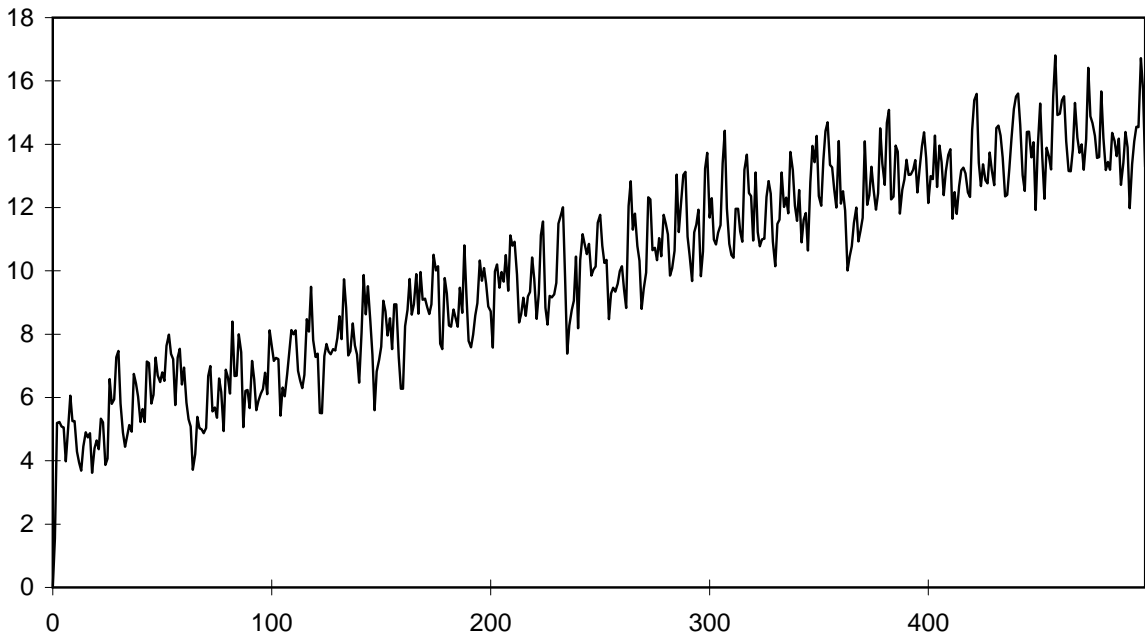


Figure 3.3: The total productive capacity  $Q_t$  for  $1 \leq t \leq 500$ .

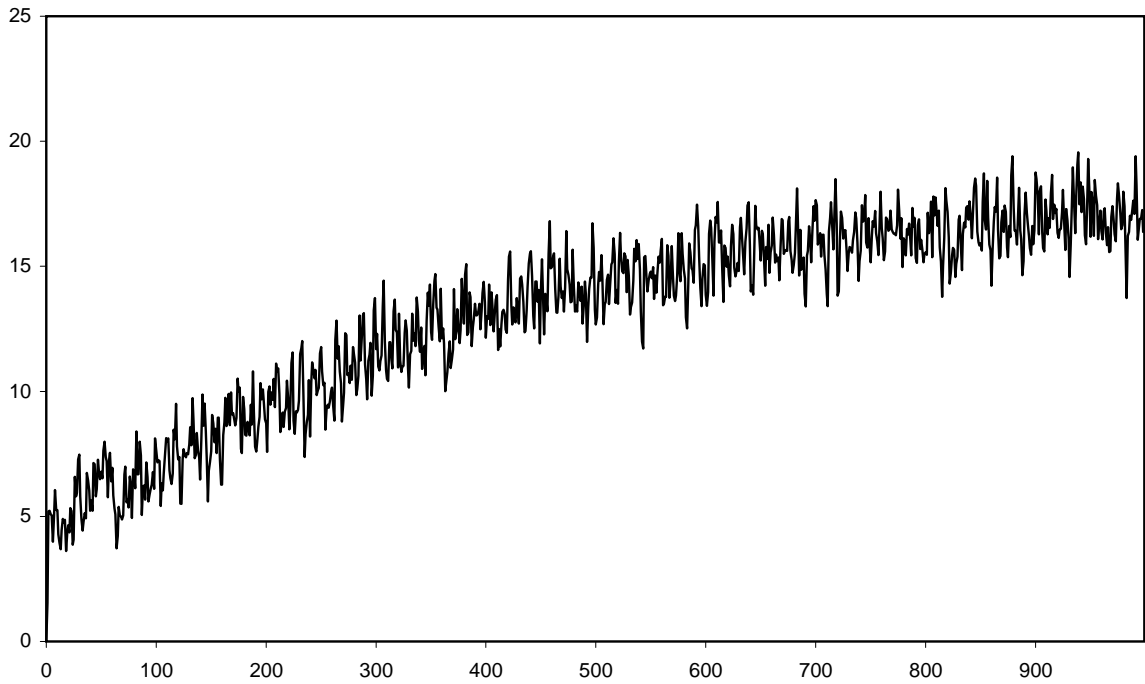


Figure 3.4: The total productive capacity  $Q_t$  for  $1 \leq t \leq 1000$ .

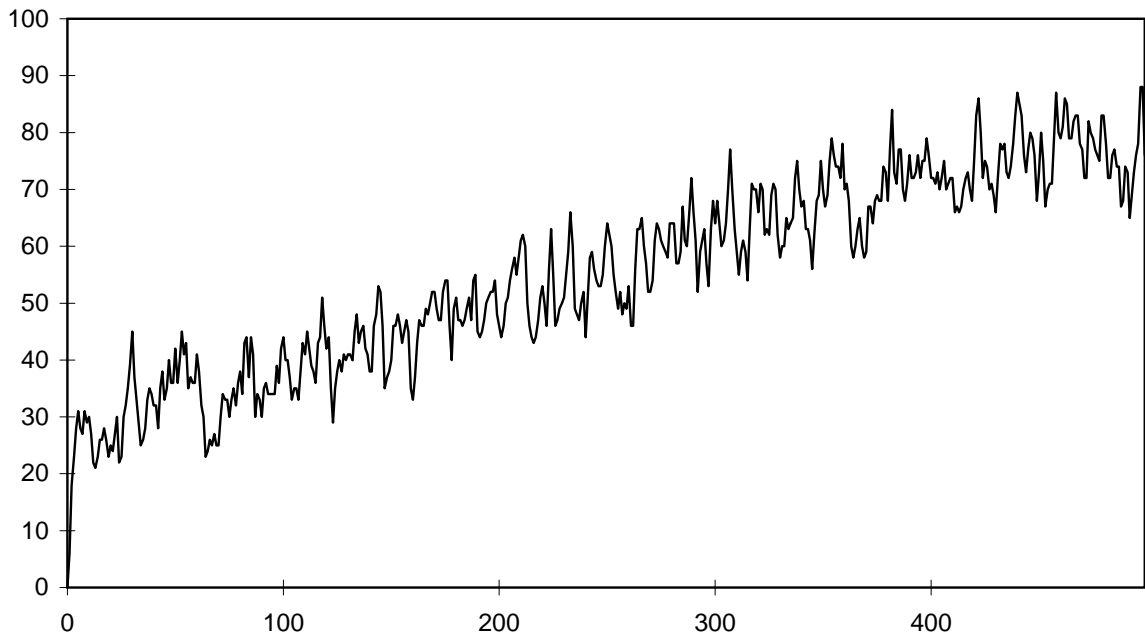


Figure 3.5: The total number of firms  $0 \leq t \leq 500$ .

Many qualitative properties of the dynamics are similar to those obtained earlier. For example, persistent fluctuations of prices and production capacities are a robust feature of both set-ups. And so are Pareto-type size distributions and skewed age profiles. Interestingly, however, no “shake-out” seems to occur in the number of firms at some point in its infancy. In this set-up, notwithstanding the property – given appropriate demand

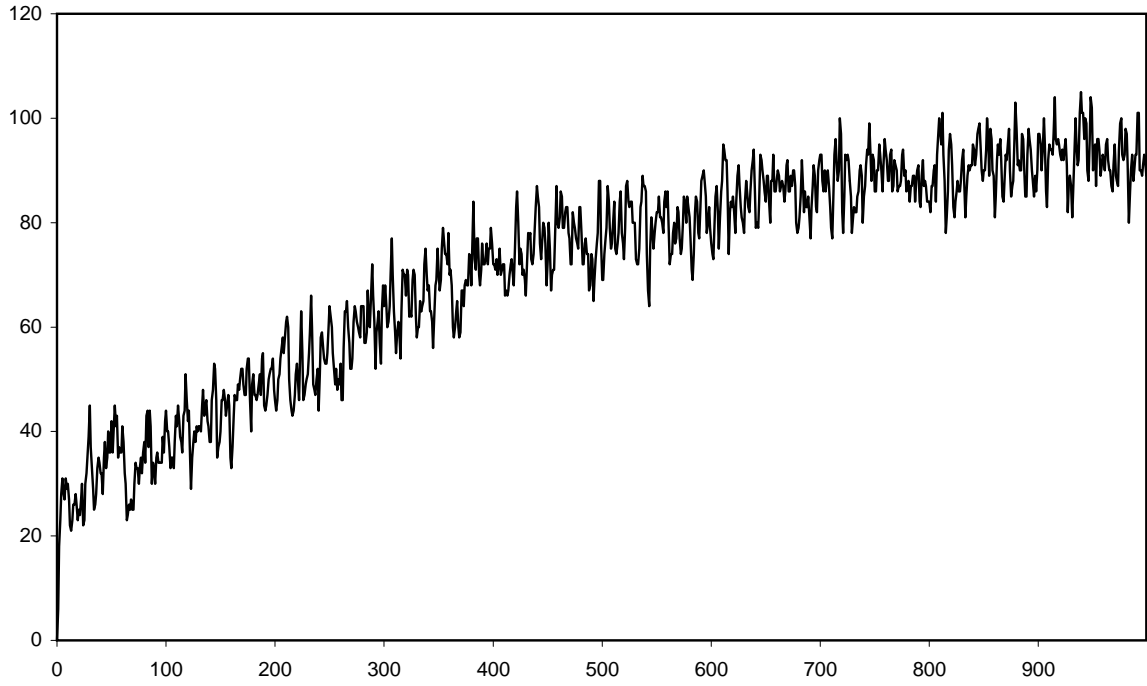


Figure 3.6: The total number of firms  $0 \leq t \leq 1000$ .

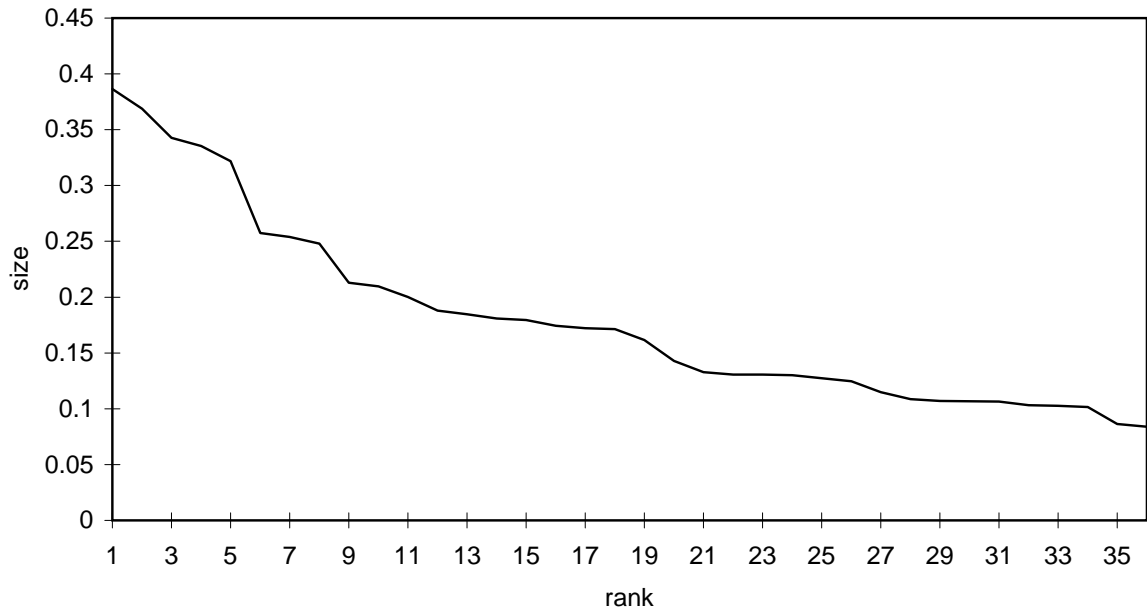


Figure 3.7: The size distribution at  $t = 50$ .



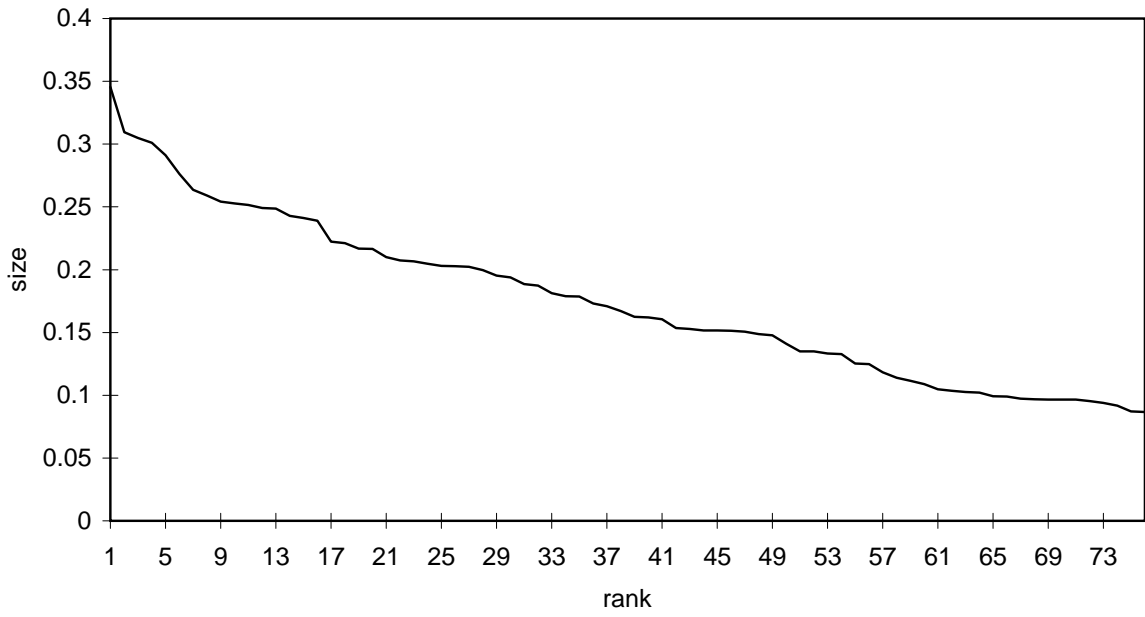


Figure 3.8: The size distribution at  $t = 500$ .

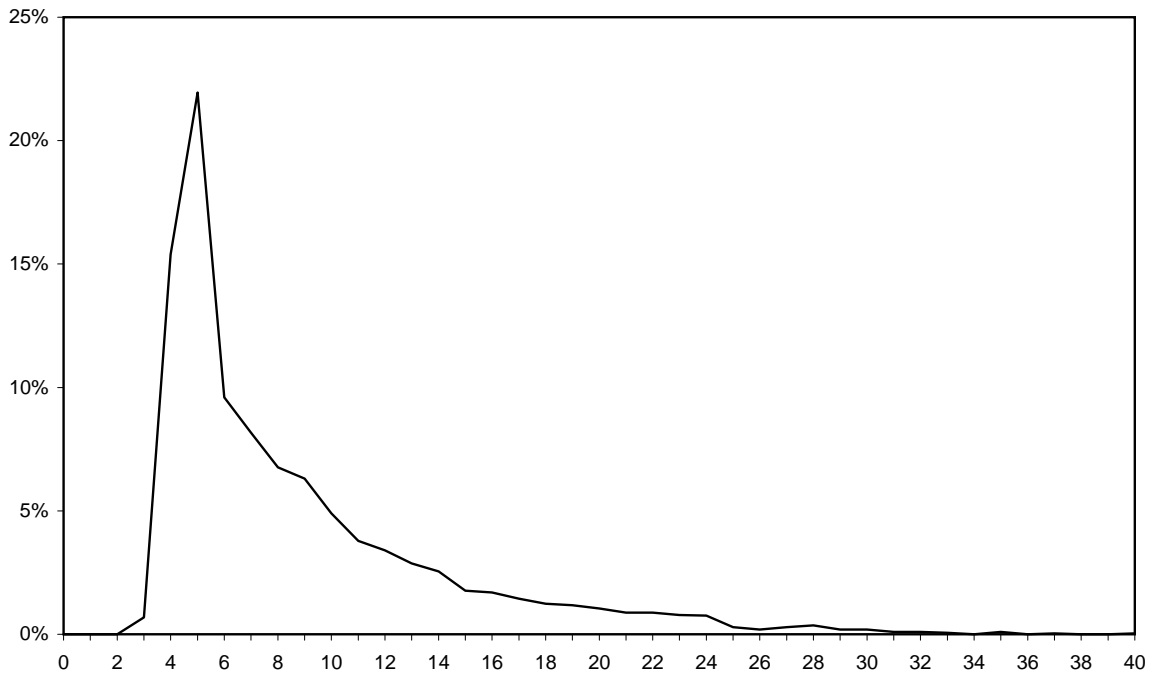


Figure 3.9: The life time distribution for  $1 \leq t \leq 500$ .

conditions –, in this set-up, that both productive capacity of the industry and the number of firms have upper bounds, the industry seems to approach them without any major structural discontinuities<sup>13</sup>.

## 4 Modeling learning on both capital and labour efficiencies

The two foregoing models may also be combined to account for those (empirically more plausible) circumstances whereby entrants are allowed to innovate, in probability, will respect to both capital and labour efficiencies. In order to define this set-up one needs four random nonnegative variables:  $\xi_C, \xi_L, \zeta_C$ , distributed over  $[a_C, b_C]$ , and  $\zeta_L$ , distributed over  $[a_L, b_L]$ . Here  $E\xi_i > 0$ ,  $D\xi_i < \infty$ , and  $0 < a_i < b_i < \infty$ ,  $i = C, L$ .

Set for  $t \geq 0$

$$A_{t+1}^{(C)} = A_t^{(C)} + \xi_C^{t+1}, \quad A_0^{(C)} = 0, \quad \text{and} \quad A_{t+1}^{(L)} = A_t^{(L)} + \xi_L^{t+1}, \quad A_0^{(L)} = 0.$$

Allowing for  $k \geq 1$  newcomers at each time  $t \geq 0$ , define their capital ratios and variable costs as  $\exp\{-A_t^{(C)}\}\zeta_C^i$  and  $\exp\{-A_t^{(L)}\}\zeta_L^i$ ,  $tk+1 \leq i \leq (t+1)k$ . Here  $\zeta_i^t$ ,  $t \geq 0$ ,  $i = C, L$ , and  $\zeta_i^j$ ,  $j \geq 1$ ,  $i = C, L$ , are independent (in all indexes) realizations of the corresponding random variables.

For a firm  $i$  (whose capital ratio is  $a_i$  and variable costs  $m_i$ ) manufacturing at time  $t$  we have as above

$$Q_{t+1}^i = Q_t^i \left\{ 1 - d + \frac{\lambda}{va_i} \max[H(Q_t) - m_i, 0] \right\} X_{Q_t^i \left\{ 1 - d + \frac{\lambda}{va_i} \max[H(Q_t) - m_i, 0] \right\} \geq \tau c/a_i}.$$

Interestingly, in this set-up productive capacities of newcomers grow to infinity in the same way as in the model with increasing productivity alone. So unboundedly grows the total productive capacity of the industry. Hence, the limit behaviour of this industry turns out to be similar to the growth pattern of an industry where newcomers learn how to improve the productivity of capital alone, as in the first of the foregoing models.

## 5 Conclusions

In this work we have explored some dynamic properties of industrial dynamics driven by an ever-lasting flow of entrants which might, in probability, be carriers of technological innovations (that is, in our simple model, more efficient techniques of production).

---

<sup>13</sup>A similar profile in the evolution of the number of firms is also obtained, under somewhat similar *Schumpeter Mark I* regimes of learning, in Dosi et al. (1995).

Some properties of the ensuing industrial dynamics appear to be *generic* features of a wide class of evolutionary processes nested into microeconomic heterogeneity and market selection. In particular, a) persistent fluctuations of aggregate variables – such as price, production capacity, total output –; b) turbulence in market shares; and, c) skewed size distributions of firms all appear to be robust features of the competitive process, irrespectively of any more detailed characterization of the origins and the bounds upon microeconomic heterogeneity. (In this respect compare the results presented here with Winter et al. (1997).) Other properties – corresponding to other empirically observable regularities – depend, on the contrary, upon more specific characterizations of the ways micro heterogeneity is generated. That includes whether and how innovations are generated along the history of the industry.

First, and most intuitively, necessary (but not sufficient) condition for the industry to exponentially grow is the persistent enlargement of notional opportunities of innovation. In the foregoing model the process is represented as an endogenous drift in the set of input coefficients stochastically attainable at each time, conditional on the best-practise knowledge already achieved at such a time. It is an ‘open-ended’ dynamic insofar as, in the limit, there is no bound upon the possibilities of discovery, even if at each time what is attainable is ultimately constrained by what has been learned up to that time.

Second, as just mentioned, such open-endedness in innovative opportunities is not sufficient to guarantee self-sustained growth. Rather, the latter stems from the interplay between learning opportunities and demand patterns. A significant implication of the foregoing modeling experiments – where, on purpose, we did not allow any exogenous demand drift – is that notionally unbounded dynamic increasing returns may fully exert their impact upon output growth only insofar as they are not limited by the extent of the market, to paraphrase the old *adagio* by Adam Smith. In the set-up with learning about capital efficiency, the market indefinitely grows in real terms because technical progress provides, for its nature, also a corresponding possibility of expansionary investment in productive capacity. Given the hypotheses of that specification of the model, even if the demand curve does not shift (in nominal terms) over time, capital costs of production per unit of output progressively wither away as time goes on, and, as a consequence, the benefits of increasing returns to knowledge accumulation can be fully reaped throughout.

Conversely, this might not be the case with learning occurring only with respect to labour efficiencies. Here, the long-term evolutionary outcomes depend upon the interplay between the shape of the demand curve and the level of fixed capital costs per unit of output. The latter obviously set a ceiling to the maximum expansion of production capacity

from any  $t$  to  $t + 1$  for whatever gross margin each firm is able to obtain. Whether such a ceiling to micro growth in any finite time carries over to the long-run *system* properties is, however, a quite different matter. As discussed above, under these circumstances, self-sustained growth of the industry can be attained only if the shape of the demand curve is such as to allow in the long-run an indefinite expansion of total gross surplus and of net investments in production capacity<sup>14</sup>.

In the foregoing paper we focused upon a specific archetype of learning dynamics, which – in tune with earlier literature – we called *Schumpeter Mark I*. In such a stylized learning regime, one restricted a positive probability of learning to entrants, with inputs coefficients fixed thereafter for all incumbents. While an obvious violence to a much more messy empirical evidence, this modeling framework allows an easier identification of the properties of that subset of learning processes whereby incumbent knowledge is highly inertial and the dominant source of change is the arrival of new entrepreneurial trials.

Given the formal *Schumpeter Mark I* set-up, we show as our third major conclusion that generally the process of competition and collective growth must be fueled by an unending process of entry and exit, with each individual firm dying with probability one in finite time. (The only exception we find is under some rather special demand patterns whereby an infinitely growing number of firms can survive, with non-decreasing absolute size, notwithstanding vanishingly small market shares, given exponentially growing markets).

Fourth, with the open-ended innovative dynamics considered here, the role of history – i.e., more formally, *path-dependence* – more forcefully appears in the account of long-term dynamics. As already noted in Winter et al. (1997), even in a ‘closed’ world of technological options, the expressions for long-term average statistics for the industry contains a possible dependence upon initial conditions (insofar as more than one ergodic set exists, determining the Markovian structure of industry evolution(s)). Here, however, path-dependency acquires much more straightforward implications. In essence, under all conditions whereby the industry unboundedly grows, what one is able to prove, *in a history-independent fashion*, is that a whole class of exponential functions may fit any pattern generated under these conditions. However, as we show above, path-dependence essentially affects *which growth rate* turns out to be selected also in the long-term.

---

<sup>14</sup>Clearly, the condition would be more easily met if one allowed some positive drift over time in demand curves themselves (and plausibly also negative drifts for ‘shrinking’ industries).

## Appendix

In the following, we provide the proofs omitted in the text.

**Lemma 2.1.** *The total productive capacity  $Q_t$  of the industry goes to infinity with probability one as  $t \rightarrow \infty$ .*

*Proof.* We have to show that for every  $\delta \in (0, 1)$  and every positive  $Q$  there is a finite time instant  $t(\delta, Q)$  such that

$$P\{Q_t \geq Q, \quad t \geq t(\delta, Q)\} \geq 1 - \delta. \quad (\text{a1})$$

By the strong law of large numbers (see, for example, Loève (1955), p. 239)

$$A_t = (t + 1)[E\xi + o_t^1(1)]. \quad (\text{a2})$$

Here  $E\xi$  designates the expected value of  $\xi$ . Also,  $o_t^1(1) \rightarrow 0$  with probability one as  $t \rightarrow \infty$ . Fix a  $\delta \in (0, 1)$  and a  $Q \in (0, \infty)$ . Since  $o_t^1(1) \rightarrow 0$  with probability one, there is a finite time instant  $t(\delta)$  such that

$$P\left\{|o_t^1(1)| < \frac{1}{2}E\xi, \quad t \geq t(\delta)\right\} \geq 1 - \delta.$$

This implies

$$P\left\{A_t \geq \frac{t+1}{2}E\xi, \quad t \geq t(\delta)\right\} \geq 1 - \delta.$$

Hence, capital ratios of firms coming from  $t(\delta)$  onward do not exceed  $\exp\{-\frac{t+1}{2}E\xi\}b$  with probability  $1 - \delta$ . Since initial capitals are always larger than  $c$ , the total productive capacity  $V_t = \exp\{A_t\}\Theta^t$  of all firms coming at  $t \geq t(\delta)$ , exceeds  $\exp\{\frac{t+1}{2}E\xi\}kc/b$  with probability  $1 - \delta$ . Here

$$\Theta^t = \sum_{i=1}^k \theta^{tk+i} / \zeta^{tk+i}.$$

Notice that

$$Q_{t+1} \geq V_t, \quad t \geq 0. \quad (\text{a3})$$

Hence,

$$P\left\{Q_t \geq \exp\left\{\frac{t}{2}E\xi\right\}kc/b, \quad t \geq t(\delta)\right\} \geq 1 - \delta.$$

Set  $t_Q = \min t : \exp\{\frac{t}{2}E\xi\}kc/b \geq Q$ . For  $t(\delta, Q) = \max[t(\delta), t_Q]$  inequality (a1) holds true.

The lemma is proved.

**Theorem 2.2.** *If  $\epsilon > 0$ , then every firm dies in a finite random time with probability one.*

*Proof.* Assume on the contrary that there is a firm surviving infinitely long with positive probability. Designating by  $q_t$  its capital at time  $t$ , we have

$$P\{q_t \geq \epsilon c, t \geq t_0\} > \delta > 0. \quad (\text{a4})$$

Here  $t_0 \geq 0$  stands for the time instant when the firm came to the industry. Also, take into account here that a firm stays alive as long as its capital does not drop below the death threshold  $\epsilon c$ .

Let  $Q = \min x > 0 : 1 - d + \lambda H(x)/va_* \leq 1 - d/2$ , where  $a_*$  designates the capital per unit of output of the firm surviving infinite time. By Lemma 2.1 there is a finite time instant  $t(\delta/2, Q)$  such that

$$P\{Q_t \geq Q, t \geq t(\delta/2, Q)\} \geq 1 - \delta/2. \quad (\text{a5})$$

For every pair of events  $A, B \in \mathcal{F}$

$$P\{A \cap B\} = P\{A\} - P\{A \cap (\Omega \setminus B)\} \geq P\{A\} - P\{\Omega \setminus B\}. \quad (\text{a6})$$

Taking this into account, we have by (a4) and (a5) that

$$P\{Q_t \geq Q, q_t \geq \epsilon c, t \geq t_1\} \geq P\{Q_t \geq Q, t \geq t_1\} - 1 + P\{q_t \geq \epsilon c, t \geq t_1\} > \delta/2,$$

where  $t_1 = \max[t_0, t(\delta/2, Q)]$ . Thus, the event  $\{Q_t \geq Q, q_t \geq \epsilon c, t \geq t_1\}$  occurs with positive probability. But, if it happens, then simultaneously

$$q_{t+1} \leq q_t(1 - d/2) \quad \text{and} \quad q_t \geq \epsilon c$$

for  $t \geq t_1$ . These inequalities cannot hold simultaneously. Indeed,  $q_{t_1}$  is a finite value, namely,

$$q_{t_1} = q_{t_0} \prod_{i=t_0+1}^{t_1-1} \left[ 1 - d + \frac{\lambda}{v} H(Q_i)/a_* \right].$$

Since  $1 - d/2 \in (0, 1)$ , the first inequality implies that from  $t_1$  onward the sequence  $\{q_t\}$  is exponentially declining. The second inequality assumes that this sequence is uniformly bounded from below by  $\epsilon c > 0$ . This contradiction shows that there cannot be a firm surviving infinitely long with positive probability.

The theorem is proved.

**Theorem 2.3.** *With probability one  $\exp\{-\alpha t\}Q_t \rightarrow \infty$  as  $t \rightarrow \infty$  for every  $\alpha < E\xi$ . Moreover, if*

$$\lim_{x \rightarrow \infty} H(x)x = 0,$$

*then with probability one  $\exp\{-\alpha t\}Q_t \rightarrow 0$  as  $t \rightarrow \infty$  for every  $\alpha > E\xi$ .*

*Proof.* The first statement holds by (a3). Let us prove the second one. Notice that

$$Q_{t+1} = Q_t \left[ 1 - d + \frac{\lambda}{v} H(Q_t) \sum_{i=1}^{n_t} Q_t^i / Q_t a_i \right] + V_t - \mathcal{E}_t, \quad t \geq 1. \quad (\text{a7})$$

Recall that  $a_i$  stands for the capital per unit of output of the  $i$ -th firm. Also,  $\mathcal{E}_t \geq 0$  designates the total outflow of productive capacity at  $t$  due to mortality of inefficient firms. Dropping  $\mathcal{E}_t$  in (a7), we get

$$Q_{t+1} \leq Q_t \left[ 1 - d + \frac{\lambda}{v} H(Q_t) \sum_{i=1}^{n_t} Q_t^i / Q_t a_i \right] + V_t, \quad t \geq 1.$$

Since  $H(\cdot)$  decreases, by (a3) this inequality can be further relaxed

$$Q_{t+1} \leq Q_t \left[ 1 - d + \frac{\lambda}{v} H(V_{t-1}) \sum_{i=1}^{n_t} Q_t^i / Q_t a_i \right] + V_t, \quad t \geq 1. \quad (\text{a8})$$

We have that

$$\sum_{i=1}^{n_t} Q_t^i / Q_t a_i \leq \frac{1}{\min_{i=1,2,\dots,n_t} a_i}, \quad \min_{i=1,2,\dots,n_t} a_i \geq \exp\{-A_{t-1}\}a, \quad V_t \geq \exp\{A_t\}kc/b.$$

Consequently,

$$\sum_{i=1}^{n_t} Q_t^i / Q_t a_i \leq \frac{b}{kca} V_{t-1}.$$

Thus, by (a8), we get

$$Q_{t+1} \leq Q_t \left[ 1 - d + \frac{\lambda b}{kvca} H(V_{t-1}) V_{t-1} \right] + V_t, \quad t \geq 1.$$

By (a2),  $V_t \rightarrow \infty$  with probability one as  $t \rightarrow \infty$ . Hence, taking into account that  $xH(x) \rightarrow 0$  as  $x \rightarrow \infty$ , the latter inequality can be rewritten as

$$Q_{t+1} \leq Q_t [1 - d + o_t^2(1)] + V_t, \quad t \geq 1, \quad (\text{a9})$$

where  $o_t^2(1) \rightarrow 0$  with probability one as  $t \rightarrow \infty$ .

Fix an  $\alpha > E\xi$ . Setting  $X_t = \exp\{-\alpha t\}Q_t$  and  $W_t = \exp\{-\alpha(t+1)\}V_t$ , we get by (a9) that

$$X_{t+1} \leq \exp\{-\alpha\}X_t [1 - d + o_t^2(1)] + W_t \leq X_t [1 - d + o_t^2(1)] + W_t, \quad t \geq 1. \quad (\text{a10})$$

We have to show that for every  $\delta > 0$  and  $\sigma \in (0, 1)$  there is a finite time instant  $t(\delta, \sigma)$  such that

$$P\{X_t \leq \delta, \quad t \geq t(\delta, \sigma)\} \geq 1 - \sigma. \quad (\text{a11})$$

Fix some  $\delta > 0$  and  $\sigma \in (0, 1)$ . Since  $o_t^1(1)$  in (a2) converges to zero with probability one, there is a finite time instant  $t_1(\sigma)$  such that

$$P\left\{ |o_t^1(1)| \leq \frac{1}{2}(\alpha - E\xi), \quad t \geq t_1(\sigma) \right\} \geq 1 - \sigma/2. \quad (\text{a12})$$

Similarly, there is a finite time instant  $t_2(\sigma)$  such that

$$P\left\{|o_t^2(1)| \leq \frac{d}{2}, \quad t \geq t_2(\sigma)\right\} \geq 1 - \sigma/2. \quad (\text{a13})$$

By (a2) and (a12) we conclude that

$$P\left\{W_t \leq \frac{kh}{a} \exp\left\{-\frac{(\alpha - E\xi)(t+1)}{2}\right\}, \quad t \geq t_1(\sigma)\right\} \geq 1 - \sigma/2. \quad (\text{a14})$$

Thus, setting  $t(\sigma) = \max[t_1(\sigma), t_2(\sigma)]$  and taking into account (a10), (a13) and (a14), we get by (a6) that

$$P\left\{X_{t+1} \leq X_t(1 - d/2) + \frac{kh}{a} \exp\left\{-\frac{(\alpha - E\xi)(t+1)}{2}\right\}, \quad t \geq t(\sigma)\right\} \geq 1 - \sigma,$$

or, equivalently, for every finite  $n \geq 1$

$$P\left\{X_{t+n} \leq X_t(1 - d/2)^n + \frac{kh}{a} \exp\left\{-\frac{(\alpha - E\xi)(t+1)}{2}\right\} \sum_{i=0}^{n-1} (1 - d/2)^{n-i-1} \exp\left\{-\frac{(\alpha - E\xi)i}{2}\right\}, \quad t \geq t(\sigma)\right\} \geq 1 - \sigma.$$

Since

$$\sum_{i=0}^{n-1} (1 - d/2)^{n-i-1} \exp\left\{-\frac{(\alpha - E\xi)i}{2}\right\} \leq \sum_{i=0}^{n-1} (1 - d/2)^{n-i-1} = \frac{2}{d}[1 - (1 - d/2)^n] < \frac{2}{d},$$

the latter inequality implies that for every finite  $n \geq 1$

$$P\left\{X_{t+n} \leq X_t(1 - d/2)^n + \frac{2kh}{ad} \exp\left\{-\frac{(\alpha - E\xi)(t+1)}{2}\right\}, \quad t \geq t(\sigma)\right\} \geq 1 - \sigma.$$

There is a finite  $t_\delta$  such that for  $t \geq t_\delta$

$$\frac{2kh}{ad} \exp\left\{-\frac{(\alpha - E\xi)(t+1)}{2}\right\} \leq \delta/2.$$

Hence, by the previous inequality we get that for every finite  $n \geq 1$

$$P\{X_{t+n} \leq X_t(1 - d/2)^n + \delta/2, \quad t \geq t_{\delta,\sigma}\} \geq 1 - \sigma, \quad (\text{a15})$$

where  $t_{\delta,\sigma} = \max[t(\sigma), t_\delta]$ . By (a7), the random variable  $Q_{t_{\delta,\sigma}}$  is finite with certainty. Hence,  $X_{t_{\delta,\sigma}}$  is also a finite random variable with certainty. There is a finite number  $n_{\delta,\sigma}$  such that

$$P\{X_{t_{\delta,\sigma}}(1 - d/2)^n \leq \delta/2, \quad n \geq n_{\delta,\sigma}\} = 1. \quad (\text{a16})$$

Setting  $t(\delta, \sigma) = t_{\delta,\sigma} + n_{\delta,\sigma}$ , by (a15) and (a16) we get (a11).

The theorem is proved.

Next, let us show that in the version of the model with growing labor productivity each firm dies in a finite random time with probability one.



**Theorem 3.2.** *If  $\epsilon > 0$ , then each firm dies in a finite random time with probability one.*

*Proof.* The death threshold implies that if a firm lives infinitely long, then its capital does not drop below  $\epsilon c$ . Since the total productive capacity of the industry is bounded with certainty, we conclude that starting from a finite random time  $\tau$  with probability one every newcoming firm dies in a finite time. Indeed, otherwise we would have infinitely many firms living infinitely long. This, by boundness from below of their capitals, would imply that the total productive capacity goes to infinity.

At time  $t \geq \tau$  consider two firms: one with capital  $c_t$  and variable costs per unit of output  $m$ , the other with capital  $c'_t$  and variable costs per unit of output  $m'$ ,  $m > m'$ . Then

$$\frac{c_{t+1}}{c'_{t+1}} = \frac{c_t \left\{ 1 - d + \frac{\lambda}{vC} \max[H(Q_t) - m, 0] \right\} \chi_{c_t \{1 - d + \frac{\lambda}{vC} \max[H(Q_t) - m, 0]\} \geq \epsilon c}}{c'_t \left\{ 1 - d + \frac{\lambda}{vC} \max[H(Q_t) - m', 0] \right\} \chi_{c'_t \{1 - d + \frac{\lambda}{vC} \max[H(Q_t) - m', 0]\} \geq \epsilon c}}. \quad (\text{a17})$$

Assume that there is a firm living infinitely long with positive probability. Set  $c_t$  for its capital at  $t$  and  $m$  for its variable costs per unit of output. Then

$$P\{c_t \geq \epsilon c, t \geq \tau'\} = \delta > 0, \quad (\text{a18})$$

where  $\tau' < \tau$  stands for the time instant when it comes to the industry. By (a2) there is a time instant  $t_1$  such that

$$P\{A_t > \frac{t+1}{2} E\xi, t \geq t_1\} \geq 1 - \delta/2.$$

Choose  $t_2$  such that  $\exp\{-\frac{t+1}{2} E\xi\} h < m$  for  $t \geq t_2$ . Then with probability exceeding  $1 - \delta/2$  every firm coming after  $t^* = \max(t_1, t_2)$  has variable costs less than  $m$ . Consider a time instant  $t \geq \max(t^*, \tau)$ . There is a firm coming at  $t$ . Set  $c'_t$  for its capital and  $m'$  for its variable costs. Since we are in the time domain where every entrant dies in a finite time, this new firm dies at a finite time instant  $t' > t$  with probability one. Since  $m' < m$ , by (a17) we get that

$$c_{t'} \leq c_t \frac{c'_{t'}}{c_t} \leq c_t \frac{\epsilon c}{c} \leq \epsilon c_t. \quad (\text{a19})$$

At  $t'$  another firm comes to the industry and, again, its variable costs are less than  $m$ . Similarly, it dies at  $t''$  and we obtain that  $c_{t''} \leq \epsilon c_{t'}$  or  $c_{t''} \leq \epsilon^2 c_t$ .

Let  $\epsilon < 1$ . Since  $c_t \leq CQ_*$  for  $t \geq \tau'$ , we conclude that  $c_{t_k} \rightarrow 0$  as  $k \rightarrow \infty$  for some sequence of finite time instants  $t_k$ ,  $k \geq 1$ , and this occurs with probability at least  $1 - \delta/2$ . By (a6) and (a18) we see that with probability at least  $\delta/2$  both the sequence  $c_t$ ,  $t \geq \tau$ , is bounded from below by  $\epsilon c > 0$  and has a subsequence  $c_{t_k}$ ,  $k \geq 1$ , converging to zero. This is impossible.

Let  $\epsilon = 1$ . There are two possibilities, namely first, there is a sequence of finite time instants  $t_k$ ,  $k \geq 1$ , such that  $\lambda H(Q_{t_k})/vC - m \geq d$ , or second,  $\lambda H(Q_t)/vC - m < d$  starting from a finite time instant  $\tau''$  with probability one.

In the first case by (a17) we see that for every firm coming at some  $t_k \geq \max(t^*, \tau)$

$$\frac{c_{t_k+1}}{c'_{t_k+1}} = \frac{c_{t_k}}{c'_{t_k}} \left\{ 1 - \frac{\lambda}{vC} \frac{m - m'}{1 - d + \frac{\lambda}{vC} [H(Q_{t_k}) - m']} \right\} \leq$$

$$\frac{c_{t_k}}{c'_{t_k}} \left\{ 1 - \frac{\lambda}{vC} \frac{m - m'}{1 - d + \frac{\lambda}{vC} [H(0) - m']} \right\} = \frac{c_{t_k}}{c'_{t_k}} r, \quad (\text{a20})$$

where  $c'_{t_k}$  stands for the capital and  $m'$  for the variable costs of the newcomer. Since we are in the time domain where every entrant dies in a finite time, this firm dies at  $t'_1 > t_k$ . By (a17) and (a20) we see that

$$\frac{c'_{t'_1}}{c'_{t'_1-1}} \leq \frac{c_{t'_1-1}}{c'_{t'_1-1}} \leq \dots \leq \frac{c_{t_k+1}}{c'_{t_k+1}} \leq r \frac{c_{t_k}}{c'_{t_k}}.$$

Thus

$$c'_{t'_1} \leq r c_{t_k} \frac{c'_{t'_1}}{c'_{t_k}} \leq r c_{t_k} \frac{\epsilon c}{c} \leq r c_{t_k}.$$

By (a19) we conclude that during the life time of any firm coming from  $\max(t^*, \tau)$  onward, the firm living infinitely long at the very least does not gain anything in terms of capital stock. But it shrinks  $r$  times during the life times of firms coming at  $t_k \geq \max(t^*, \tau)$ . This occurs with probability not less than  $1 - \delta/2$ . Thus, with the same probability there is a sequence  $t'_k$ ,  $k \geq 1$ , such that  $c_{t'_k} \rightarrow 0$  as  $k \rightarrow \infty$ . By (a6) and (a18) we conclude that with probability at least  $\delta/2$  both the sequence  $c_t$ ,  $t \geq \tau$ , is bounded from below by  $\epsilon c > 0$  and has a subsequence  $c_{t'_k}$ ,  $k \geq 1$ , converging to zero. This is impossible.

Now let  $\lambda H(Q_t)/vC - m < d$  starting from a finite time instant  $\tau''$  with probability one. Hence, from  $\tau''$  onward, the total productive capacity evolves in the domain where the notional firm surviving for infinite time shrinks. Consequently, we must have that  $\lambda H(Q_t)/vC = d + m + o_t(1)$  where  $o_t(1) \rightarrow 0$  with probability one as  $t \rightarrow \infty$ . This implies that with probability at least  $1 - \delta/2$  every firm coming after  $\max(t^*, \tau'')$  will be unboundedly growing (almost as  $(1 + m - m')^t$  for  $t \rightarrow \infty$ ) in contradiction with the uniform boundness of the total productive capacity.

Thus we have showed that assuming that there is a firm surviving infinitely long with positive probability yields a contradiction.

The theorem is proved.

## References

- Baldwin, J. R.** (1995). *The Dynamics of Industrial Competition*. Cambridge: Cambridge University Press.
- Carroll, J. R.** (1997). “Long-term Evolutionary Changes in Organizational Populations: Theory, Models and Empirical Findings”, *Industrial and Corporate Change*, **6**, pp. 119–143.
- Carroll, J. R., and M. T. Hannan (eds.)** (1995). *Organizations in Industry*. New York and Oxford: Oxford University Press.
- Davis, S. T., J. C. Haltiwanger, and S. Schuh** (1996). *Job creation and Destruction*. Cambridge, Mass.: MIT Press.
- Doob, J. L.** (1953). *Stochastic Processes*. New York: John Wiley.
- Dosi, G.** (1988). “Sources, Procedures and Microeconomic Effects of Innovation”, *Journal of Economic Literature*, **26**, No. 3, pp. 1120–1171.
- Dosi, G., O. Marsili, L. Orsenigo, and R. Salvatore** (1995). “Learning, Market Selection and the Evolution of Industrial Structures”, *Small Business Economics*, **7**, pp. 411-436.
- Dunne, T., M. J. Roberts, and L. Samuelson** (1988). “Patterns of Firm Entry and Exit in U.S. Manufacturing Industries”, *Rand Journal of Economics*, **19**, pp. 495-515.
- Ericson, R., and A. Pakes** (1995). “Markov-Perfect Industry Dynamics: A Framework for Empirical Work”, *Review of Economic Studies*, **62**, pp. 53-82.
- Freeman, C., and L. Soete** (1997). *The Economics of Industrial Innovation*. Cambridge, Mass.: MIT Press, third edition.
- Geroski, P.A.** (1995). “What Do We Know About Entry?”, *International Journal of Industrial Organisation*, **13**, pp. 421–440.
- Hannan, M. T., and J. Freeman** (1989). *Organizational Ecology*. Cambridge, Mass.: Harvard University Press.
- Hopenhayn, H. A.** (1992). “Entry, Exit and Firm Dynamics in Long Run Equilibrium”, *Econometrica*, **60**, pp. 1127-1150.

- Ijiri, Y. and H. A. Simon** (1974). “Interpretations of Departures from the Pareto Curve Firm – Size Distributions”, *Journal of Political Economy*, **82**, pp. 315-331.
- Jovanovic, B.** (1982). “Selection and Evolution of Industry”, *Econometrica*, **50**, pp. 649-670.
- Loève, M.** (1955). *Probability Theory*. New York: D. van Nostrand Company.
- Malerba, F., and L. Orsenigo** (1995). “Schumpeterian Patterns of Innovation”, *Cambridge Journal of Economics*, **19**, No.1, pp. 47–65.
- Schumpeter, J. A.** (1934). *Theory of Economic Development: an Inquiry into Profits, Capital, Interest and the Business Cycle*. Cambridge, Mass.: Harvard University Press.
- Valente, M.** (1997). *Laboratory for Simulation Development. User Manual*, Interim Report IR-97-020/May 1997, International Institute for Applied Systems Analysis, Laxenburg, Austria.
- Winter, S. G., Y. M. Kaniovski, and G. Dosi** (1997). *A Baseline Model of Industry Evolution*. Interim Report IR-97-013/March, International Institute for Applied Systems Analysis, Laxenburg, Austria.