



LJMU Research Online

Aouad, CJ, James, PA and Chilingarian, I

Coupling local to global star formation in spiral galaxies: the effect of differential rotation

<http://researchonline.ljmu.ac.uk/id/eprint/13898/>

Article

Citation (please note it is advisable to refer to the publisher's version if you intend to cite from this work)

Aouad, CJ, James, PA and Chilingarian, I (2020) Coupling local to global star formation in spiral galaxies: the effect of differential rotation. Monthly Notices of the Royal Astronomical Society, 496 (4). pp. 5211-5226. ISSN 0035-8711

LJMU has developed **LJMU Research Online** for users to access the research output of the University more effectively. Copyright © and Moral Rights for the papers on this site are retained by the individual authors and/or other copyright owners. Users may download and/or print one copy of any article(s) in LJMU Research Online to facilitate their private study or for non-commercial research. You may not engage in further distribution of the material or use it for any profit-making activities or any commercial gain.

The version presented here may differ from the published version or from the version of the record. Please see the repository URL above for details on accessing the published version and note that access may require a subscription.

For more information please contact researchonline@ljmu.ac.uk

<http://researchonline.ljmu.ac.uk/>

Coupling local to global star formation in spiral galaxies: the effect of differential rotation

Charles J. Aouad,¹ Philip A. James¹ and Igor V. Chilingarian^{2,3}

¹*Astrophysics Research Institute, Liverpool John Moores University, IC2, Liverpool Science Park, 146 Brownlow Hill, Liverpool L3 5RF, UK*

²*Center for Astrophysics – Harvard and Smithsonian, 60 Garden St. MS09, Cambridge, MA 02138, USA*

³*Sternberg Astronomical Institute, M. V. Lomonosov Moscow State University, 13 Universitetsky prospect, 119234 Moscow, Russia*

Accepted 2020 June 29. Received 2020 June 22; in original form 2020 March 5

ABSTRACT

Star formation is one of the key factors that shapes galaxies. This process is relatively well understood from both simulations and observations on a small ‘local’ scale of individual giant molecular clouds (GMCs) and also on a ‘global’ galaxy-wide scale (e.g. the Kennicutt–Schmidt law). However, there is still no understanding on how to connect global to local star formation scales and whether this connection is at all possible. Here, we analyse spatially resolved kinematics and the star formation rate (SFR) density Σ_{SFR} for a combined sample of 17 nearby spiral galaxies obtained using our own optical observations in H α for nine galaxies and neutral hydrogen radio observations combined with a multiwavelength spectral energy distribution analysis for eight galaxies from the THINGS project. We show that the azimuthally averaged normalized SFR density in spiral galaxies on a scale of a few hundred parsecs is proportional to the kinetic energy of GMC collisions due to differential rotation of the galactic disc. This energy is calculated from the rotation curve using the two Oort parameters A and B as $\log(\Sigma_{\text{SFR}}/\text{SFR}_{\text{tot}}) \propto \log[2A^2 + 5B^2]$. The total kinetic energy of collision is defined by the shear velocity that is proportional to A and the spin energy of a cloud proportional to the vorticity B . Hence, shear does not act as a stabilizing factor for the cloud collapse thus reducing star formation but rather increases it by boosting the kinetic energy of collisions.

Key words: H II regions – ISM: kinematics and dynamics – galaxies: evolution – galaxies: kinematics and dynamics – galaxies: star formation.

1 INTRODUCTION

It is well established that stars form in the heart of dense cold molecular clouds which are themselves embedded within the diffuse atomic gas. However, although the presence of gas is a necessary condition for the process (Kennicutt 1998a; Wong & Blitz 2002; Kennicutt et al. 2007; Leroy et al. 2008; Bigiel et al. 2008; Schruba et al. 2011), it is not a sufficient one. In fact, star formation is very slow and inefficient (Forbrich et al. 2009; Lada, Lombardi & Alves 2010; Longmore et al. 2013; Kruijssen et al. 2014; Johnston et al. 2014; Barnes et al. 2017) even in cold dense regions of the interstellar medium (ISM, Querejeta et al. 2019), and despite all investigations, whether from observations, numerical simulations and theoretical studies, there is still no consensus on how star formation proceeds, what factors regulate it, and how to connect local star formation regions on small scales to the global star formation properties on galactic scales.

On the small scale (subparsec and few parsec scales), the process is a complex interplay between self-gravity and different opposing forces such as magnetic fields (Dib et al. 2008, 2010; Boss & Keiser 2013), thermal instabilities and radiative pressure (Wada, Spaans & Kim 2000; Shadmehri, Nejad-Asghar & Khesali 2010; Kim, Kim & Ostriker 2011). The process is also controlled by other

factors such as stellar feedback (Dib et al. 2009; Murray, Quataert & Thompson 2010), turbulence (Federrath 2013), chemical processes and kinematics (Seigar 2005; Escala & Larson 2008; Weidner, Bonnell & Zinnecker 2010; Hocuk & Spaans 2011; Dib et al. 2012; Meidt et al. 2013; Colombo et al. 2018).

On large scales, the relation is apparently simpler, as an empirical power law links the star formation rate (SFR) surface density to the gas surface density (averaged on kpc scales) through $\Sigma_{\text{SFR}} \propto (\Sigma_{\text{gas}})^N$ (Schmidt 1959; Kennicutt 1998a). This relation is well known as the ‘Kennicutt–Schmidt law’ (referred to throughout this paper as the KS law). Although this empirical relation holds well when measured on kpc scales or on disc-averaged data (Bigiel et al. 2008; Leroy et al. 2008; Schruba et al. 2011), it is not certain that it holds on smaller scales. Onodera et al. (2010) found that the scatter of the KS relation increases on smaller scales until it breaks completely on the scale of molecular clouds (80 pc scales). The breakdown of the KS relation on small scales has also been demonstrated in dwarf galaxies (Krumholz 2013), in spiral galaxies (Khoperskov & Vasiliev 2017), and recently in some observational studies (Salim et al. 2020; Kumari, Irwin & James 2020). Additionally an increasing number of studies suggest that this relation varies between different galaxies, and even within different regions of the same galaxy (Roman-Duval et al. 2016; Morokuma-Matsui & Muraoka 2017). Pan, Kuno & Hirota (2014) find that the slope of the KS law increases from ~ 1.4 in areas of low Σ_{H_2} to ~ 2 – 3 in regions of high Σ_{H_2} in the same galaxy. They interpret this change as a shift in regime in the sense

* E-mail: charlesaouad@aascid.ac (CJA); P.A.James@ljmu.ac.uk (PAJ)

that for regions of $N \sim 1.4$, the star formation is mainly triggered by gravitational instabilities while for the larger slope $N \sim 2-3$, it is triggered by a combination of gravitational instabilities and cloud collisions.

The physical origin of the KS law is still debated, and there is some doubt that the overall large-scale relation is the sum of similar ones over smaller scales. This has led many researchers to attempt to include parameters describing the kinematics of the galaxy, on small or large scales, as an additional ingredient to connect local SFRs to global properties for a complete star formation theory (Kennicutt 1998b; Tan 2000; Krumholz & McKee 2005; Krumholz, McKee & Tumlinson 2009). Kennicutt (1998b) finds that Σ_{SFR} can be linked to the global galactic orbital angular frequency Ω (taken at the outer radius used to perform the average) through $\Sigma_{\text{SFR}} \propto \Sigma_{\text{gas}} \Omega$, where Σ_{gas} includes both the atomic and the molecular components (HI and H₂). Silk (1997) defines the relation between the Σ_{SFR} and the Σ_{gas} as $\Sigma_{\text{SFR}} = \epsilon \frac{\Sigma_{\text{gas}}}{\tau_{\text{orb}}}$ where τ_{orb} is the local orbital time and ϵ is the efficiency of star formation. Another recipe is $\Sigma_{\text{SFR}} \propto \Sigma_{\text{gas}}^N (\Omega - \Omega_p)$ (Wyse 1986) where Ω_p is the pattern rotation frequency of the spiral arms. Tan (2000) proposes a model in which the SFR increases in areas of strong shear mainly driven by cloud–cloud collisions due to the differential rotation of the disc.

It is also worth to mention that the classification of galaxies and therefore their kinematics on the global scale, seem to correlate with their global SFRs (Seigar 2005; James et al. 2004; Lee et al. 2007, i.e. the star formation activity increases when progressing along the Hubble sequence from early- to late-type galaxies).

These findings suggest that the galaxy kinematics, in particular the way it rotates, play a role in regulating the star formation process on smaller scales. Even though the capacity of a galaxy to form stars is related to its total gas content, what sets the radial distribution of the star-forming regions throughout the disc is still a subject of debate. The role of rotation has been investigated in several studies, both observational and through simulations, leading to conflicting conclusions (Seigar 2005; Luna et al. 2005; Escala & Larson 2008; Weidner et al. 2010; Dib et al. 2012; Thilliez et al. 2014; Suwannajak, Tan & Leroy 2014; Colling et al. 2018; Colombo et al. 2018). A main challenge for researchers remains to find a star formation theory that is consistent on all scales, and it becomes evident that the kinematics of the galaxy may be an important ingredient in such a theory.

This paper investigates the effect of the differential rotation on the star formation distribution throughout the disc, on scales of a few hundred parsecs. In Section 2, we describe the physics of differential rotation, in Sections 3 and 4 we present our data and the data analysis methods, in Section 5 we show our results, leaving the discussion of these results to Section 6. In Section 7, we draw our conclusions and suggest some possible lines of future work.

2 BACKGROUND

Disc galaxies do not rotate as solid bodies, rather they rotate differentially. The consequence of this rotation is characterized by two main physical effects: shear and vorticity, both of which are expressed as functions of the angular frequency $\Omega(R)$ of the galactic rotation and the gradient of the angular frequency with respect to the radius $\frac{d\Omega}{dR}$ (Binney & Tremaine 2008).

Galactic shear is quantified by the first Oort parameter A , where

$$A = -0.5R \frac{d\Omega}{dR}. \quad (1)$$

Thus A is the amount of stress between the differentially rotating annuli. It is a measure of how much a rotation curve deviates from a solid body trend in a specific position along the galactic radius, that is the angle between a straight line passing through the origin and the slope of the rotation curve at that particular point. It is a measure of the local shear values. The shearing motions will create a relative velocity between two points at different galactic radii and this relative velocity can be expressed as

$$\dot{y} = b(\Omega - \frac{dV}{dR}) = 2 \times b \times A \quad (2)$$

where \dot{y} is the shear velocity (considering a frame of reference that is rotating at the same angular frequency Ω of the galaxy and y is in the direction of rotation) and b is the radial separation between two orbits. The increase of shear A will increase the relative velocities between two points set at two different radii separated by a distance b .

Vorticity ω is the curl of the velocity vector field and is quantified by the second Oort parameter B such that $\omega = |2B|$ (Binney & Merrifield 1998) and

$$B = -(\Omega + 0.5R \frac{d\Omega}{dR}). \quad (3)$$

Hence, B describes the tendency of the fluid to spin about any given point. On the rotation curve, B is proportional to the sum of two angles: the solid body rotation straight line passing through the origin and the derivative of the rotation curve at that particular point. In that sense it is the sum of both the galactic rotation and the additional differential rotation. In regions of solid body rotation, it is exactly equal to the angular orbital galactic frequency. The differential rotation causes gravitationally bound parcels of fluid to spin around their centre creating centrifugal forces that will counterbalance the collapsing effect of gravity. These forces will increase as the gas parcel shrinks while rotating faster due to conservation of angular momentum (Toomre 1964).

Furthermore, small radial perturbations caused by the non-uniform gravitational potential of the disc will cause periodic oscillations in the radial dimension, superimposed on the circular motion. From an inertial frame of reference e.g. that centred on the galaxy nucleus and rotating with the galaxy at any point R along the galactic radius, these periodic perturbations will create additional elliptical motions, with an associated frequency κ called the epicyclic frequency that can be measured from the rotation curve. κ can be expressed as

$$\kappa = \sqrt{-4B\Omega} \quad (4)$$

(Binney & Merrifield 1998). Toomre (1964) used κ to quantify the stability of a differentially rotating disc in a theoretical frame. He argued that the disc can be stable against collapse on small scales because of thermal pressure (or velocity dispersion) and on larger scales because of differential rotation quantified by κ . The Toomre stability criterion Q is expressed as

$$Q = \frac{\kappa \sigma}{\pi G \Sigma} \quad (5)$$

where σ is the velocity dispersion, G is the gravitational constant, κ is the epicyclic frequency and Σ is the gas surface density. If $Q > 1$, this criterion is met, and the disc will be stable on all scales. The Toomre stability criterion can also be expressed with B instead of κ as both B and κ are proportional to the local spin energy.

The Toomre stability criterion accurately predicts the star formation threshold in disc systems (Martin & Kennicutt 2001), however, it fails to do so for dwarf irregular galaxies (Elson, de Blok & Kraan-Korteweg 2012). Furthermore, the presence of magnetic fields can

Table 1. Galaxy properties and observing details. See Section 2 for descriptions of column entries.

Name	Classn	Dist ^a (Mpc)	<i>i</i> (deg)	PA (deg)	Slit PA (deg)	SFR (M _⊙ yr ⁻¹)	SFRind ^b	Rotation curve ^c
UGC 5717	SABbc	29.043	61.1	16.5	189.99	0.9099(± 0.1677)	H α (J)	H α long-slit spect
UGC 7315	SABbc	20.2	49.8	105	100	0.8649(± 0.2998)	H α (J)	H α long-slit spect
UGC 2002	Sdm	11.684	23	70	89.98	0.1467(± 0.0834)	H α (J)	H α long-slit spect
UGC 5102	SABb	1797	69	131	0	1.7413(± 0.3253)	H α (J)	H α long-slit spect
UGC 4097	SAa	30.72	42	325.47	360.47	0.546(± 0.1701)	H α (J)	H α long-slit spect
UGC 3580	SAa	21.902	62.2	2.8	29.99	0.5300 (± 0.1301)	H α (J)	H α long-slit spect
UGC 2245	SABc	14.265	53	10.2	44.98	3.2074(± 0.8475)	H α (J)	H α long-slit spect
UGC 4779	SAc	22.477	61	87.3	219.9	1.5585(± 0.3438)	H α (J)	H α long-slit spect
UGC 3804	Scd	42.591	49.8	13.8	189.8	2.2694(± 0.4158)	H α (J)	H α long-slit spect
NGC 2403	SBc	3.2	63	124	–	0.382	UV+NIR(L)	VF 1st moment (THINGS)dB
NGC 2841	Sb	14.1	74	153	–	0.741	UV+NIR(L)	VF 1st moment (THINGS)dB
NGC 3521	SBbc	10.7	73	340	–	2.104	UV+NIR(L)	Tilted rings H I(THINGS)dB
NGC 3198	SBc	13.8	72	215	–	0.931	UV+NIR(L)	Tilted rings H I(THINGS)dB
NGC 6946	SBc	5.9	33	243	–	3.239	UV+NIR(L)	VF 1st moment (THINGS)dB
NGC 7793	Scd	3.9	50	290	–	0.235	UV+NIR(L)	Tilted rings H I(THINGS)dB
NGC 7331	SAb	14.7	76	168	–	2.987	UV+NIR(L)	VF 1st moment (THINGS)dB
NGC 5055	Sbc	10.1	59	102	–	2.123	UV+NIR(L)	Tilted rings H I(THINGS)dB

Notes:^a Distances are taken from NED for the optical galaxies and from Leroy et al. (2008) for the radio galaxies.

^b J: From James et al. (2004) for the optical galaxies. L: from Leroy et al. (2008) for the radio galaxies.

^c Rotation curve data: dB = de Blok et al. (2008), using a tilted rings model.

VF=cut through the velocity field of the first moment map from THINGS.

transfer angular momentum away from the cloud (Salmeron 2009; Elmegreen 1987). Based on this reasoning, Elmegreen (1993) and Hunter, Elmegreen & Baker (1998a) derive a stability parameter based on shear A , rather than epicyclic frequency κ . They argue that the competition between self-gravity and shear is more relevant than the competition between self-gravity and vorticity. This formalism has been adopted by many authors (Dib et al. 2012; Luna et al. 2005; Takahira et al. 2018) and thus if gravitational perturbations are the main driver of star formation, then the limiting factor will be how quickly these perturbations grow before shear disrupts them and we should expect low SFRs in areas of strong shear. However, if the star-forming areas do not follow regions of strong shear then either shear is not enough to provide stability against collapse or another mechanism is driving the star formation.

In a differentially rotating fluid it is possible that both shear and local spin participate in setting the relative kinematics of the fluid parcels along the orbit, in the sense that gravitationally bound clouds can be rotating (due to vorticity as measured by B), while moving relative to each other at shear velocity (due to shear as measured by A).

In this paper, we use two sets of data to investigate the relation between these two parameters (namely the Oort parameters A and B), and the normalized SFR surface density distribution throughout the disc (in azimuthally averaged radial rings) $\frac{\Sigma_{\text{SFR}}}{\text{SFR}_{\text{total}}}$ on scales of a few hundred parsecs.

3 THE DATA

The properties of the 17 spiral galaxies in this study are listed in Table 1, including classification and distance properties which were taken from the NASA/IPAC Extragalactic Database (NED). Column 1 of Table 1 contains the galaxy name; column 2 the galaxy classification; column 3 the adopted distance; column 4 the inclination angle; column 5 the position angle; column 6 the slit position angle (where applicable); column 7 the total SFR; column 8 the star formation indicator, and column 9 the method used to extract the rotation curve.

Our data consist of two sets referred here as: the optical galaxies (nine galaxies) from our own optical observations, and the radio

galaxies (total eight) which are galaxies with published kinematics and SFRs from the THINGS ‘The H I Nearby Galaxy Survey’ (Walter et al. 2008). Our choice of using two sets of data at different wavelengths and using different methods to extract our variables makes our findings more solid. For the optical data, we use H α as tracer of star formation while for the radio data (taken from the literature) a combination of ultraviolet (UV) and mid-infrared (IR) is used. In fact it is well known that recombination emission lines such as H α are not only due to star formation activity and they may be caused by other activities such as shocks or active galactic nuclei (AGNs), and additionally they can be significantly affected by extinction. The choice of using another set of data is motivated by this. Furthermore, the rotation curves of the optical data set are derived using narrow-band long-slit spectroscopy, while for the radio data set H I integral field spectroscopy velocity maps are used, this also avoids the uncertainties of contamination due to gas local kinematics, velocity dispersion, and turbulence of the H₂ regions.

3.1 The optical galaxy sample

The optical data consist of R band and H α narrow-band images. The images were taken in the 1-m Jacobus Kapteyn Telescope (JKT) at the Observatorio del Roque de Los Muchachos on La Palma in the Canary Islands using the JKT CCD camera. The detector is SITE2, a device with 2048 × 2048 24 μm pixels. The image scale is 0.33 arcsec pixel⁻¹. Long-slit spectroscopic data were taken on the Isaac Newton Telescope (INT) using the intermediate dispersion spectrograph (IDS) with a 235 mm focal length camera. The CCD used is a RED+2 with grating R1200Y. The CCD detector was used to maximize sensitivity in the region of H α emission, the most important feature for the present investigation. The slit width for all galaxy observations was 1.5 arcsec. The spatial pixel scale is 0.4 arcsec pixel⁻¹. The unvignetted wavelength coverage was 1518 Å about a central wavelength of 4900 Å. The slit was not always aligned with the major axis of the galaxy being observed, requiring multiplicative geometric corrections to be made to the observed rotation curves, in addition to the usual inclination corrections.

3.2 The radio galaxy sample (NGC)

The THINGS (Walter et al. 2008) is a high spectral $>5.2 \text{ km s}^{-1}$ and spatial (6 arcsec) resolution survey of H I emission in 34 nearby galaxies obtained using the NRAO Very Large Array (VLA) at the National Radio Astronomy Observatory. The observed objects are at distances between 2 and 15 Mpc with linear resolutions of $\sim 100\text{--}500 \text{ pc}$. The velocity field resolutions cover a range of $1.3\text{--}5.2 \text{ km s}^{-1}$.

4 DATA ANALYSIS

4.1 Building rotation curves and estimating shear A and vorticity B

For the optical data sample, we constructed rotation curves using long-slit spectroscopy. The rotation velocity is calculated from the spectra binned to 3 pixels in the spatial direction, which corresponds a spatial sampling of 1.2 arcsec , similar to de Blok & Bosma (2002). This corresponds to a physical sampling size in a range of 46 pc bin^{-1} for UGC 2002 to 184 pc bin^{-1} for UGC 4705 with a mean value of 59 pc bin^{-1} .

We use the H α emission line as a velocity tracer. For every spatial bin along the slit, we extract ‘slices’ using the FIGARO command from the STARLINK software package (Currie et al. 2014). An underlying local stellar continuum is fitted by a polynomial and subtracted from a spectrum, then a Gaussian function is fitted to the emission line. We build the rotation curve for both the receding and the approaching sides of a galaxy. The centre of a galaxy was assumed to coincide with the maximum of the light on the slit. However, for some galaxies where this approach did not yield a reliable measure, we considered the systemic velocity to be that, which provides the smallest deviation between the two-folded sides of the rotation curve. Rotation velocities were corrected for inclination using the inclination angle computed from the axial ratio of a galaxy reported in the NED database. We also added an additional geometric correction in some galaxies, where the slits were not parallel to the major axis. For the subsequent analysis, we took a mean value between approaching and receding parts of each galaxy. The diversity of our rotation curves is similar to previous published rotation curves extracted using ionized gas emission lines (Swaters, Madore & Trewheella 2000; de Blok & Bosma 2002; Vogt et al. 2004).

For the radio data set, we used the published rotation curves from de Blok et al. (2008), who used a tilted rings method to extract their rotation curves from atomic gas integral field spectroscopy data. The rotation curves of galaxies in the radio data set extend to much further galactocentric radii than the optical sample. For some galaxies (NGC 2403, NGC 2841, NGC 6946, and NGC 7331), the rotation curves for the inner part of the galaxy were not available, so we extracted them by cutting through the corresponding velocity fields (first moment maps). The spatial sampling for radio rotation curves ranges from 97 pc bin^{-1} for NGC 6946 to 401 pc bin^{-1} for NGC 3198 with a mean value of 203 pc bin^{-1} .

We fit a polynomial to the mean values measured (our polynomial range in degrees from 6 to 25 depending on each rotation curve) using a least-square fitting technique. Our rotation curves are presented in the upper panels of Fig. 1 and in Appendix A. A polynomial fitting smooths a rotation curve by removing peaks connected to, for example star-forming regions falling on the edge of the slit. It also makes it possible to use analytic derivatives instead of numerical ones for the subsequent analysis of shear and vorticity where dV/dR are needed.

Several approaches exist to tackle the noise while computing derivatives numerically. All of them deal with different forms of

smoothing or a functional representation of an observational data set. Some examples of smoothing techniques commonly used in astrophysics are: (i) polynomial fitting of an entire data set with a function of a sufficiently high order to model it properly (Sil’chenko et al. 2011); this also includes Legendre or Chebyshev polynomial expansion often used to represent a continuum in an observed spectrum of a galaxy or a star while fitting it against a model (see e.g. Cappellari & Emsellem 2004; Chilingarian et al. 2007); (ii) piecewise low-order polynomial fitting using smoothing splines, for example ‘basic’ b -splines widely used in astronomical data processing to describe heavily oversampled data sets, for example, to perform Poisson-limited subtraction of sky background from 2D and 3D spectra (Kelson 2003; Chilingarian et al. 2015); and (iii) digital filtering of an observed signal using a convolution with a kernel specifically designed to eliminate noise but preserve realistic trends and features in the data. Perhaps, the most widely used example of the latter technique is the Savitzky & Golay (1964) filter, a least-square-based polynomial smoothing technique that provides a convolution kernel that can be directly used to compute a regularized n th order derivative from a data set. While b -splines or digital filtering work very well for densely oversampled data sets, in our case, where galaxies sometimes lack gas emission in certain regions along the radius causing gaps, and the overall sampling of rotation curves is not that great, they may lead to numerical artefacts hampering the computation of derivatives. Therefore, we decided to use the polynomial fitting. However, for consistency checks we chose one galaxy, NGC 5055, where the sampling of the rotation curve is sufficiently dense to apply the Savitzky–Golay filter. We applied the third Savitzky–Golay smoothing kernels with lengths of 9 and 17 pixels and compared both smoothed rotation curve and Oort parameters computed from its derivative to those calculated from the fitting of the 21st order polynomial against the entire data set. Our results from the two approaches turn to be entirely consistent within uncertainties.

We calculate the absolute values of shear from the first Oort parameter A using equation (2) and replacing Ω by $\frac{V}{R}$, we get

$$A = \left| -0.5 \left(\frac{V}{R} - \frac{dV}{dR} \right) \right|. \quad (6)$$

We calculate the absolute values of vorticity B using equation (1). By replacing Ω by $\frac{V}{R}$, we get

$$B = \left| -0.5 \left(\frac{V}{R} + \frac{dV}{dR} \right) \right| \quad (7)$$

where both A and B are expressed in $\text{km s}^{-1} \text{ kpc}^{-1}$.

4.2 Extracting star formation rate surface density

For the optical data, we use the narrow-band H α images, to extract differential photometric measurements using elliptical apertures, since H α is a measure of the SFR (Kennicutt 1998b; Osterbrock & Ferland 2006; Davies et al. 2016). The measurements are taken differentially in elliptical annuli by subtracting the signal of each ellipse from the smaller ellipse starting from the centre and going towards the visible edge of a galaxy. The elliptical apertures are offset by 3 pixels, corresponding to a value of 0.993 arcsec , consistent with the rotation curve sampling.

The eccentricity of the elliptical apertures is determined taking the a/b ratio from NED, where a and b are the semimajor and semiminor sizes of the galaxy respectively. The centre of each galaxy is defined from R broad-band images. We calibrate our photometric counts to SFR in $M_{\odot} \text{ yr}^{-1} \text{ kpc}^{-2}$ using total galaxy

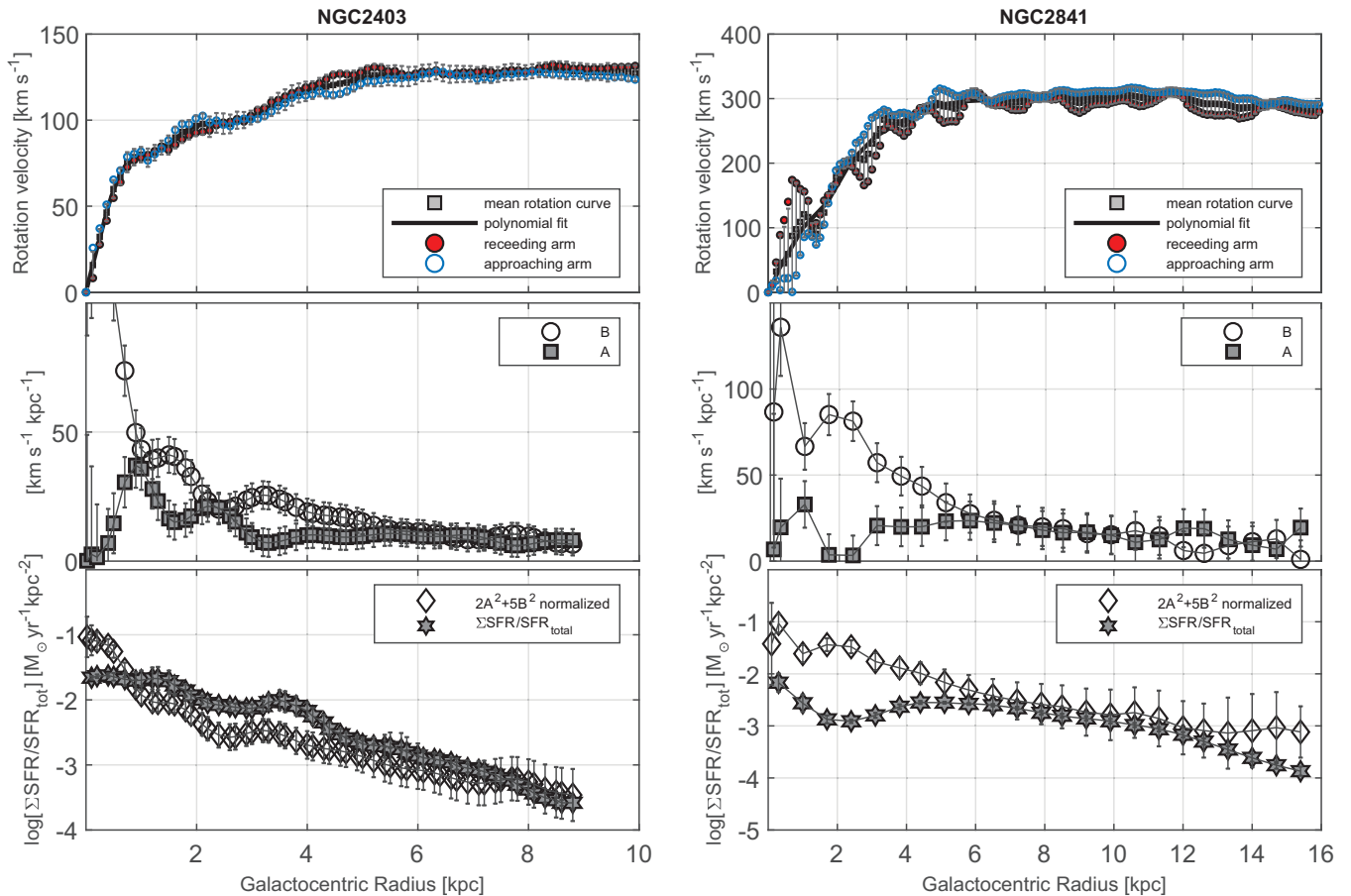


Figure 1. The upper panel of each figure shows the rotation curve in km s^{-1} , the middle panel shows the two values of A and B in $\text{km s}^{-1} \text{kpc}^{-1}$, and the bottom panel $\log[\Sigma\text{SFR}/\text{SFR}_{\text{total}}]$ with the value of $\log[2A^2 + 5B^2]$ normalized to arbitrary units all as a function of galactocentric radius in kpc on the X -axis.

SFRs from James et al. (2004). To calculate the surfaces, we take the distances from NED and using the scale plate of the photometric data we convert to kpc^{-2} correcting for inclination. Our procedure results in azimuthally averaged SFRs over the disc annuli. Similar techniques have frequently been used in the past (see e.g. Martin & Kennicutt 2001; Wong & Blitz 2002; Boissier et al. 2003).

For the radio data set we use the published spatially resolved SFRs from Leroy et al. (2008). Their SFR surface densities are extracted using combined data in FUV from the *GALEX* nearby Galaxies survey (Gil de Paz et al. 2007) and $24\mu\text{m}$ from the SINGS Spitzer Infrared Nearby Galaxy Survey. They argue that this combined tracer method has the advantage of being sensitive to both exposed and dust-embedded star formation. The SFRs are extracted in rings extending a few hundreds of parsecs (200 pc for NGC 2403, NGC 2841, NGC 6946, and NGC 7793; 700 pc for NGC 7331; while NGC 3184, NGC 5055, and NGC 3521 are sampled on scales of 400–600 pc.)

4.3 Error analysis

For the optical sample, the errors on the rotation curve can be due to three main factors:

(i) The error in determining the centre of the Gaussian fit: while for most of the points this error is a very small fraction of a pixel (we are dealing with very strong $\text{H}\alpha$ emissions), for some of them it is

0.1 pixel and in rare cases it reaches 0.2 pixel. We consider a mean error of 0.1 pix which corresponds to a value of 2.4 km s^{-1} . This will yield different values for each galaxy after adding geometrical corrections for inclination and the slit misalignment with respect to the major axis.

(ii) The error due to the random velocity of the ionized gas: we considered the random velocity to have a fixed value of 7 km s^{-1} across any galactic radius (see e.g. Gammie, Ostriker & Jog 1991; Tan 2000).

(iii) The error due to the folding of the two sides of a galaxy: since we are averaging our rotation curves to mean values calculated for the two sides, receding and approaching and the asymmetries in the folding are sometimes large. We take the error of the averaged velocity values to cover at least both values of the arms.

We added all these errors in quadrature; the error on the rotation curve is propagated through the values of A and B by considering the error on V and the error on the term dV in radial spans consistent with our sampling. The error on the SFR density are computed following James et al. (2004) for the optical sample. We use the SFR density uncertainties reported by Leroy et al. (2008) for the radio sample.

5 RESULTS

Our main results are presented in Fig. 1 and in Appendix A. On the top panel, we plot the rotation curve, and present separately the receding arm, the approaching arm, the mean values, and the

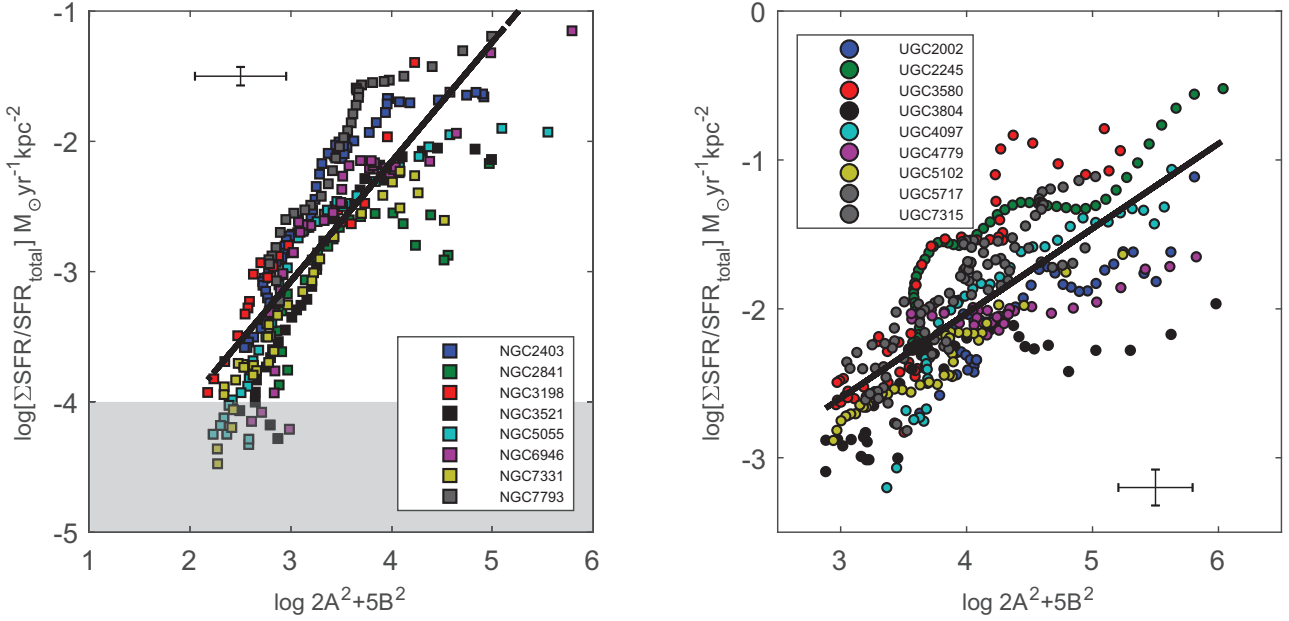


Figure 2. $\log \frac{\Sigma_{\text{SFR}}}{\text{SFR}_{\text{tot}}}$ for each galaxy on the y-axis and the value $\log 2A^2 + 5B^2$ on the x-axis. The left-hand panel is for the radio data and the right-hand panel for the optical data. The black line is the best fit. The shaded area represents the low star formation regime.

polynomial fit. The rotation curves do not follow a systematic trend of a ‘rising’ and a ‘flat’ part, rather their gradients keep changing, and our smoothed rotation curve polynomial fits trace and describe these variations well. This has a remarkable consequence on the measurements of shear and vorticity. In a constant rising part of the rotation curve (a straight line passing through the origin) the shear value will always be zero and vorticity will always be equal to double the angular frequency (solid body rotation), while for the flat part, A will decrease as $\propto 1/R$.

However, this is not true for a rotation curve that is not simply a rising and a flat part. The slope of our polynomial fit keeps changing in both the ‘rising’ and the ‘flat’ parts. This is a key difference of our study with respect to most previous works, because most of them were done on kpc scales and ignored those small and real fluctuations of the rotation curve shape.

The consequence of this can be seen in the values of A and B that we plot in the middle panel of Fig. 1. It is clear that the values of these two parameters do not follow a predicted pattern even in the innermost parts of the galaxy, because sudden changes in the slope of the curve cause large variations in the values of A and B . It is also worth noting that A increases in the parts of the rotation curve with negative gradients.

In the bottom panel of Fig. 1 we plot the value of the SFR fraction distribution $\Sigma_{\text{SFR}}/\text{SFR}_{\text{tot}}$ that is the SFR surface density sampled on azimuthally averaged annuli normalized by the total SFR of the galaxy as a function of galactocentric radius. This represents a fraction of the total SFR of the galaxy in one particular ring. The normalization by the total SFR makes it possible to compare different galaxies with different gas contents, additionally this allows us to exclude central starbursts or nuclear star-forming regions induced by an inner bar. We further plot the value $2A^2 + 5B^2$ as a function of the galactocentric radius on the same figure. (We refer the reader to Section 6.1 where we demonstrate that the combination $2A^2 + 5B^2$ measures a total kinetic energy of a rotating cloud moving with a shear velocity and rotating because of the vorticity originating from

the differential rotation of the galaxy). A visible trend can be seen, in which $\Sigma_{\text{SFR}}/\text{SFR}_{\text{tot}}$ follows the slope of $2A^2 + 5B^2$.

This trend shows individually for all the galaxies and globally for 679 points when all values are combined together in the form of $\log(\Sigma_{\text{SFR}}/\text{SFR}_{\text{tot}}) \propto \log[2A^2 + 5B^2]$. Fig. 2 shows the radio data on the left-hand panel and the optical data on the lower panel. Fig. 3 shows all galaxies combined together with the black line representing the best fit.

We find a linear trend with a strong correlation coefficient of 0.836 for the subset shown in the white surface of our plot on Fig. 3. We exclude the data points in light grey representing the low SFR at $\log(\Sigma_{\text{SFR}}/\text{SFR}_{\text{tot}}) < -4$ and the data points for $\log[2A^2 + 5B^2] > 4.2$ which correspond to very rapidly changing rotation curves, which might not be adequately described by our polynomial fitting procedure.

It is important to note that the SFRs are calculated in azimuthally averaged rings and are not resolved within regions of the disc. Therefore, the rotation curves extracted using the tilted rings method from the radio data (namely NGC 3521, NGC 3198, NGC 7793, and NGC 5055) are more consistent with the SFR data, as this method calculates azimuthally averaged line-of-sight velocities and smooths out any non-circular motions. However, our study finds that the effect of the Oort parameters on the SFRs distribution does not change even if the rotation curves are taken as an average between the approaching and the receding sides.

The best-fitting relation to the data is linear. It has the form:

$$\log(\Sigma_{\text{SFR}}/\text{SFR}_{\text{tot}}) = -5.94_{[\pm 0.11]} + 1.01_{[\pm 0.03]} \log(2A^2 + 5B^2). \quad (8)$$

6 DISCUSSION

6.1 The relation of Σ_{SFR} to A and B

The trends we find in Figs 1–3 are not expected if the star formation process was only due to the growth rate of density fluctuations in the

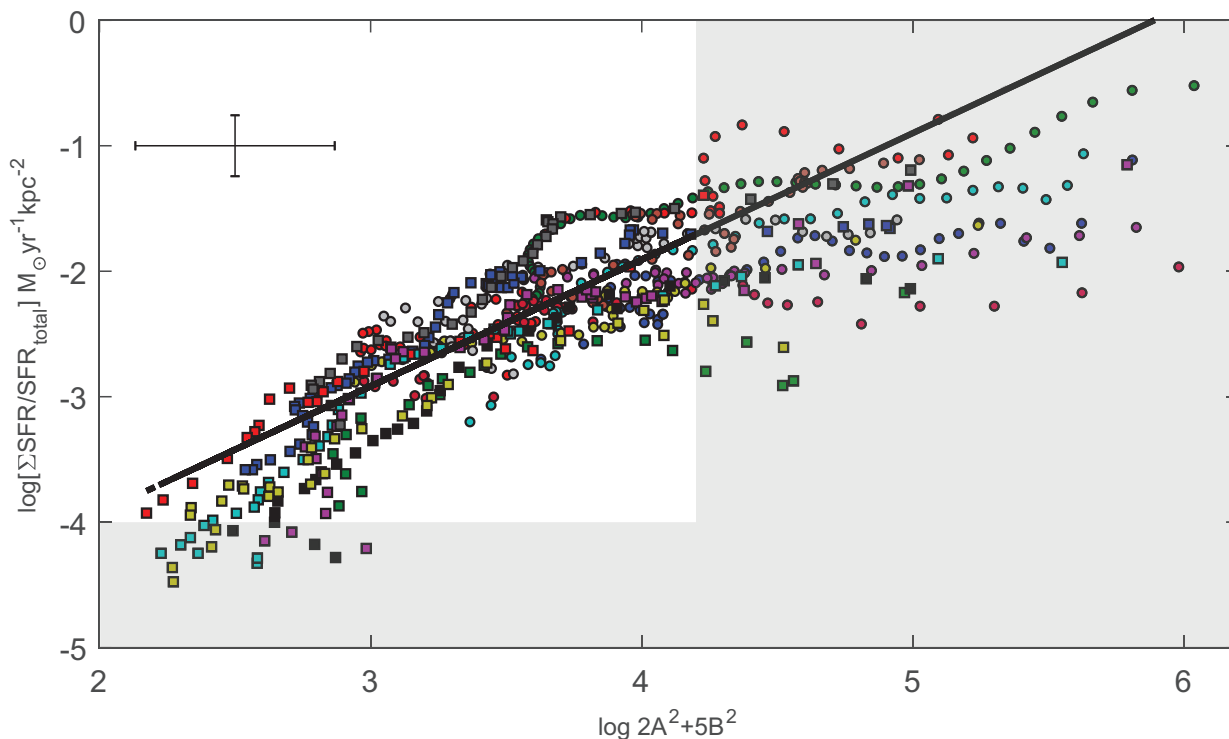


Figure 3. $\log \frac{\Sigma \text{SFR}}{\text{SFR}_{\text{total}}}$ for all data points of all galaxies on the y-axis and the value $\log 2A^2 + 5B^2$ on the x-axis. The black line is the best fit to the data. The shaded area represents the data set excluded from the best fit. Colours and symbols are similar to Fig. 2.

disc. If this was the case, we should expect the differential rotation to act to regulate the process and suppress the star formation. Areas of strong shear should create stability against collapse; however, this does not show in our data. Additionally, areas of strong vorticity quantified by B are not expected to follow the trend of the SFRs. However, the SFR increases with vorticity. The trend found in this study seems to indicate that another process controls the star formation mechanism, which is enhanced with differential rotation rather than suppressed. This is possible if the clouds instead of being destroyed by shear, or supported by local vorticity, are on the contrary colliding in regions of strong shear.

We consider a frame of reference that is rotating at the same angular frequency Ω of the galaxy at any galactic radius R_0 , with the x -axis pointing radially outward, the y -axis in the direction of rotation, and the z -axis perpendicular to the disc. In nearly circular orbits, relative motions of fluid parcels in the y coordinate are caused by the differential rotation, while motions in the x and z coordinates are caused by radial and vertical perturbations. These perturbations can be due either to collisionless encounters (scattering by other giant molecular clouds, GMCs) or by the azimuthally varying gravitational potential and they will result in epicyclic motions with associated velocity components and amplitudes. Spitzer & Schwarzschild (1951) argued that the stellar velocity dispersion is caused by such collisionless encounters of stars with massive molecular clouds. However, the cloud–cloud scattering is different from the star–cloud scattering in the sense that the epicyclic amplitude for the former is of the same range as the cloud tidal radius while for the latter it is much larger. Therefore, the interaction velocities between two different clouds will be dominated by the contribution from differential rotation (shear-dominated encounters), rather than by dispersion (dispersion-dominated encounters) (Binney & Tremaine 2008).

The same approximation was used in a number of studies (e.g. Gammie et al. 1991; Tan 2000). They consider that the resulting

velocity of collision between clouds is several times larger than the bulk random velocities due to scattering. These authors consider that the encounters between clouds happen at impact parameters of ~ 1 – 2 tidal radii and the velocity of these encounters is the shear velocity due to differential rotation. The role of the velocity dispersion is to set the clouds on epicycles, but it is not the velocity influencing the collision rates. The effect of velocity dispersion is to increase the impact parameter at which the clouds collide and therefore increases the frequency of collisions and not the velocity of encounters.

The tidal radius is defined as the radius at which the escape velocity from the cloud is equal to the shear velocity, and represents the volume where the gas is confined gravitationally to the mass contained within its radius rather than escaping due to differential rotation. GMCs have been observed to have a radius that is on the order of their tidal radius (Stark & Blitz 1978). Gammie et al. (1991) and Tan (2000) use fiducial values in the range of ~ 100 pc, and thus, ~ 1 – 2 tidal radii is consistent with the scales discussed here.

If we think of the sheared disc as different annuli sliding on each other, then the relative velocity between these annuli is the shear velocity \dot{y} (in the y coordinate). We neglect motions in the z -axis because the size of the clouds is similar to the scale height of a disc (Stark & Blitz 1978; Solomon et al. 1987; Tan 2000; Guo et al. 2015) and the GMC occupy a thin vertical spread giving them a two rather than a three dimensional distribution.

Moreover, the vorticity ω measures the tendency of parcels of the fluid to spin around a central point, hence, the differential rotation will cause gravitationally bound clouds to spin around their centres of mass. The angular frequency of this local spin will be proportional to the second Oort parameter B at that point with $\omega = |2B|$. If gravitationally bound clouds inherit their angular momentum from the galaxy rotation, the radius below which they will spin should in principle be similar to or smaller than their tidal radius.

The positive gradients of the rotation curve will result in prograde spin of the clouds while negative gradients will result in retrograde spin of the clouds. In fact both of these trends have been reported in observations (Rosolowsky et al. 2003; Braine et al. 2019). One critical point to note here is that the value of B measures the tendency of the clouds to spin, however it is not a direct measurement of their rotation. Numerous observational studies provide evidence that clouds spin and there is some evidence that their spin is due to the differential rotation of the galaxy. Kutner et al. (1977) observe two GMC complexes in the Orion region and they measure a large-scale velocity gradient of $135 \text{ km s}^{-1} \text{ kpc}^{-1}$, hence they argue that the source of this angular momentum is the galactic rotation. Rosolowsky et al. (2003) observe 45 GMC in Messier 33 with a resolution of 10 pc, and report velocity gradients in the range of $100 \text{ km s}^{-1} \text{ kpc}^{-1}$ which they interpret as an indication of spin. Furthermore, they report that 40 per cent of the clouds are counter-rotating with respect to the galaxy. Braine et al. (2018) observe 566 clouds in Messier 33 and find that the majority of the clouds have rotational frequencies around $50 \text{ km s}^{-1} \text{ kpc}^{-1}$. Braine et al. (2019) observe 1058 clouds in Messier 51 on resolution scales of ~ 40 pc and argue that the velocity gradients indeed reflect clouds rotation and their gradients follow galactic shear. Additionally, the rotation of the clouds is prograde in rising parts of the rotation curve, which indicates that the spin of the clouds is largely inherited from the rotation of the galaxy.

If clouds collide in areas of strong shear, then from a non-inertial frame of reference, that is centred on one of the clouds, the energy of collision will be the sum of the energy of motion in the y coordinate (with velocity proportional to A) and the energy of spin (with angular frequency proportional to B). The total kinetic energy of a moving, rotating cloud in a differentially rotating disc will thus be

$$\text{KE} = \frac{1}{2} M_c \dot{y}^2 + \frac{1}{2} I \omega^2 \quad (9)$$

where $\omega = |2B|$ is the angular frequency of the local spin, $\dot{y} = b(\Omega - \frac{dV}{dR}) = 2 \times r_t \times A$ is the shear velocity at one tidal radius and $I = \frac{5}{2} M_c r_t^2$ is the moment of inertia of a rotating sphere, M_c being the mass of the cloud, and r_t its tidal radius. The assumptions that the GMCs have a spherical geometry and a constant density distribution are a major simplification, but the change of the moment of inertia of the cloud geometry will not have a large impact on the result. Replacing in equation (9) for the values \dot{y} , I and Ω and dividing by M_c we get the total kinetic energy per unit mass KE:

$$\text{KE} = r_t^2 (2A^2 + 5B^2) \quad (10)$$

If stars form through inelastic cloud collisions (Kogure 1965; Ricotti, Ferrara & Miniati 1997; Li 2017) driven by shear velocities, then the rate at which they form should be proportional to the energy of such encounters, and we have demonstrated that this energy is proportional to the value of $2A^2 + 5B^2$. As clouds collide at supersonic velocities, a shock is created at the collision interface compressing the gas further, creating dense clumps prone to further collapse and eventually star formation (Anathpindika 2009a, b, 2010). It is important to note the range over which this relation is linear. From Fig. 3, it can be seen that it breaks down in the low star formation regime (< -4), shown in light grey shaded area. In fact as first shown by Bigiel et al. (2008), a low-density subthreshold regime exists, below which the dependence of the SFR density on gas density becomes uncorrelated. It is also seen that this relation saturates at high kinetic energy and becomes non-linear, that is increasing the kinetic energy no longer increases the star formation linearly, which may be due to the fact that SFR cannot grow infinitely while in principle nothing limits the collision energy. Additionally, the empirical relation we find in equation (8) can be a

powerful tool; given a total SFR of a galaxy and a rotation curve, or a modelled gravitational potential, one can predict the star formation surface density distributions at different locations throughout the disc in rings of few hundreds of parsecs, without the need of gas data.

6.2 Comparison with the literature

6.2.1 Theory and simulations

The concept of cloud collisions has been previously proposed before (Loren 1976; Gilden 1984; Scoville, Sanders & Clemens 1986). Tan (2000), motivated by the results of Gammie et al. (1991), develops a theoretical framework for the cloud collision model. In this model, the GMC collisions cause the majority of star formation in the disc. He argues that these events are frequent in a differentially rotating disc (~ 5 per orbital time) and they drive the SFRs observed in disc galaxies. He predicts the star formation activity to be increased through cloud collisions in regions of strong shear and reduced in regions of low shear. This is in agreement with recent simulations (Tasker & Tan 2009; Dobbs, Pringle & Duarte-Cabral 2015). The exact model of Tan has the form of $\Sigma_{\text{SFR}} \propto \Sigma_{\text{gas}} \Omega (1 - 0.7\beta)$ where $\beta = \frac{d \log V}{d \log R} = \frac{dV/V}{dR/R} = \frac{R}{V} \frac{dV}{dR}$ and $\Omega = \frac{V}{R}$. Substituting we get:

$$\Sigma_{\text{SFR}} \propto \Sigma_{\text{gas}} \left(\frac{V}{R} - 0.7 \frac{dV}{dR} \right) \quad (11)$$

where the term $\frac{V}{R} - 0.7 \frac{dV}{dR}$ is a modified Oort parameter. We plot the $\frac{\Sigma_{\text{SFR}}}{\Sigma_{\text{SFR}_{\text{total}}}}$ against the value $\frac{V}{R} - 0.7 \frac{dV}{dR}$ (Fig. 4, lower right panel) and find an increasing trend, in accordance with the model of Tan. The model of cloud collisions has been also proposed as an effective mechanism in which massive stars form (Habe & Ohta 1992; Fukui et al. 2014; Takahira et al. 2018)

Thus, if cloud collision is indeed an effective process to form stars, we should expect the efficiency of this process to depend on the energy of such collisions and therefore their impact velocity.

Recent simulations have investigated the effect of varying the impact velocity of two colliding clouds with different masses. Fujimoto, Tasker & Habe (2014) find that colliding clouds at velocities between 10 and 40 km s^{-1} are successful 50 per cent of the times in producing stars, while velocities below and above these values are only successful at 5 per cent. These limits correspond to values of A between 33 and 132 $\text{km s}^{-1} \text{ kpc}^{-1}$ if taken at ranges of 150 pc. Takahira et al. (2018) perform simulations of cloud collisions, and vary the impact velocity of clouds between 5 and 30 km s^{-1} . They find that faster collisions produce a larger number of cores and in shorter amount of time. Similar to Fujimoto et al. (2014), they find that low speed values of 5 km s^{-1} have less role in the star formation than speeds of 10–30 km s^{-1} , these values correspond to a value of A of 33 $\text{km s}^{-1} \text{ kpc}^{-1}$ if considered at radial separation of 150 pc. Anathpindika (2010) find that relative collision velocities less than 5 km s^{-1} between two clouds with masses 5000 and 2000 M_{\odot} did not produce any cores. This corresponds to values of A of 16 $\text{km s}^{-1} \text{ kpc}^{-1}$. On the observational side, an increasing number of studies report star formation regions at the interface of colliding clouds (Dewangan et al. 2018; Enokiya, Torii & Fukui 2019; Fukui et al. 2019; Tsuge et al. 2019). Fujita et al. (2019) observe two colliding clouds with respective velocities of 16 and 25 km s^{-1} which makes their colliding velocity 8 km s^{-1} . They claim that massive star formation at the collision interface is probably due to the collision between the clouds.

Fukui et al. (2015) observe high-mass star-forming region in the Large Magellanic Cloud (LMC), and identify a shocked interface

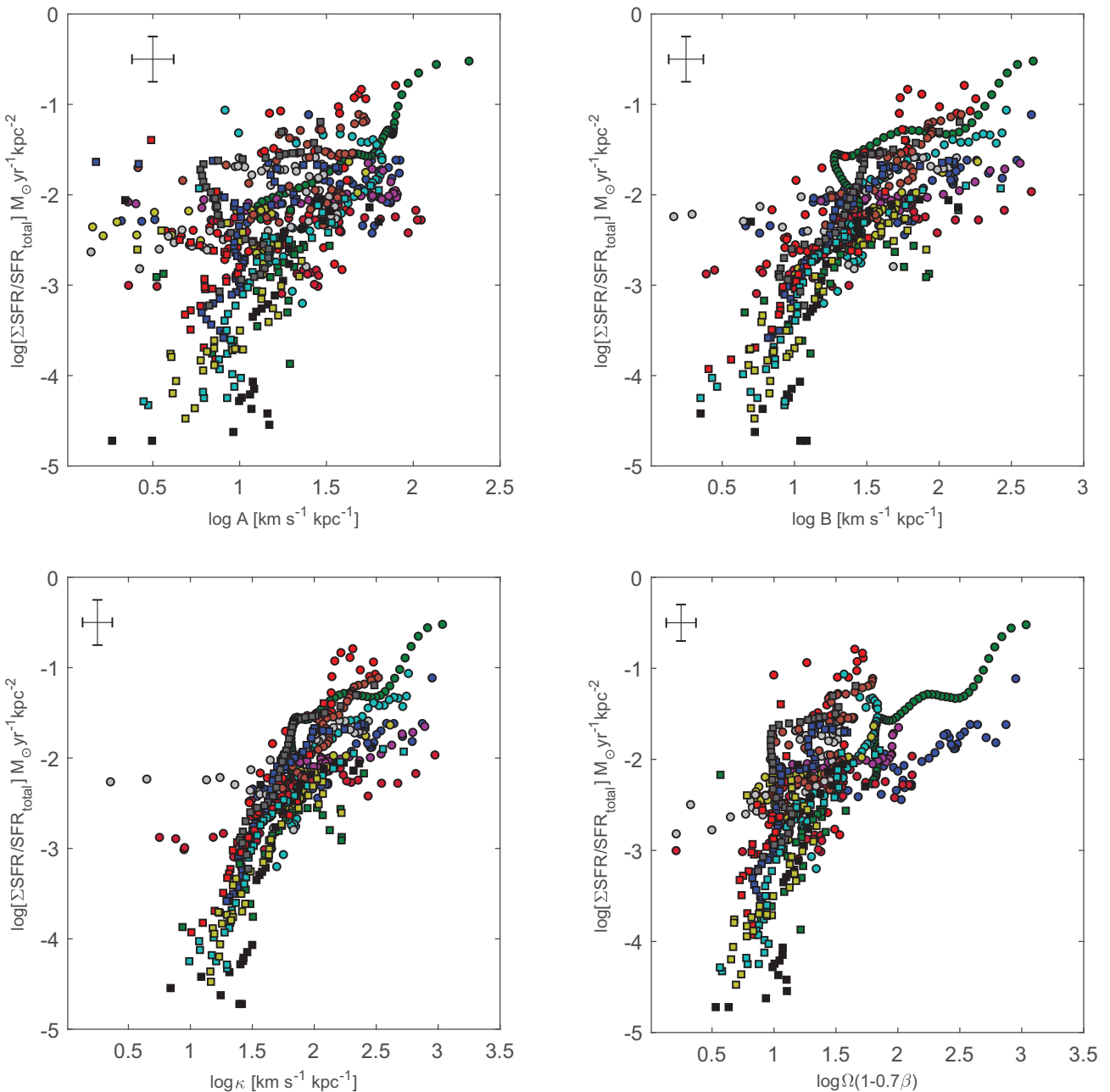


Figure 4. $\log \frac{\Sigma_{\text{SFR}}}{\text{SFR}_{\text{total}}}$ for each galaxy on the Y-axis and the values of $\log A$ (top left), $\log B$ (top right), $\log \kappa$ (bottom left), and $\log \Omega(1 - 0.7\beta)$ (bottom right). An increasing trend can be seen in which the SFR fraction distribution increases with the first Oort parameter A and the value $\Omega(1 - 0.7\beta)$ both a measure of the local shear value. This trend is also visible with the second Oort parameter B and the epicyclic frequency κ , both a measure of local vorticity.

layer between two colliding clouds. The collision velocity is again 8 km s^{-1} and they argue that it is triggering the massive star formation. Furukawa et al. (2009) and Ohama et al. (2018) observe the super star cluster Westerlund 2 and they identify surrounding H II regions belonging to two distinct clouds. They argue that the triggering of this super cluster is the clouds' collision at a velocity in the range of 10 km s^{-1} . This presents some evidence that while high collision velocities are effective at triggering star formation, the process may not be as effective for lower impact velocities. In fact, if the main trigger of star formation is due to collision velocities due shearing motions, we should expect a decrease of their efficiency with lower values of shear and therefore A .

Observations and simulations hint at a value of a minimum collision velocity affecting star formation of 10 km s^{-1} , that corresponds to $A \approx 30 \text{ km s}^{-1} \text{ kpc}^{-1}$ at radial distances of 150 pc . These scales are consistent with our sampling and the resolution of our rotation curves. In Fig. 4, we plot the relation between the normalized SFR densities $\Sigma_{\text{SFR}}/\text{SFR}_{\text{total}}$ and A (upper left panel), B (upper right panel) and κ (lower left panel) for 679 points from 17 galaxies. While the relation with A shows an increasing trend, it is obvious that for lower values of A the scatter increases, while for values larger than about $\log 1.5$ the correlation is tighter. This is in accordance with simulations and may indicate a gradual shift of star formation regime, in the sense that the cloud–cloud collision model becomes more effective with

increasing values of A and it gradually decreases with decreasing values of A . At lower collision velocities some other factors will regulate star formation, thus increasing the scatter of the correlation. The relations with vorticity B and epicyclic frequency κ show also an increasing trend with less scatter, indicating the importance of local rotational kinetic energy in the cloud collision process at these scales.

Simulations performed on the galactic scales reach varying conclusions. Weidner et al. (2010) use simulations to argue that the presence of shear inhibits the formation of dense super clusters and predict the presence of these dense clusters only in dwarf galaxies and in interacting galaxies where the lack of rotation and therefore lack of shear provides stability against collapse. Hocuk & Spaans (2011) also present models of SFR in the vicinity of an AGN, finding that the SFR and efficiency are reduced when the shear level caused by the black hole increases in their models, although these simulations do not account for either magnetic fields or stellar feedback, both of which act to reduce the star formation activity.

Colling et al. (2018) perform a 3D simulation of a 1 kpc cube in a differentially rotating disc including feedback from supernovae and H II regions. They deduce that galactic shear has an important influence on the SFR, in the sense that the higher the shear, the lower the SFR. It is worth to mention that this study considers a constant gradient to the rotation curve, and additionally they use in their simulations a 1 kpc cube, different from the flat disc approximation where the size of the GMCs is comparable to the disc scale height and where the clouds are considered to occupy a 2D rather than a 3D distribution.

Simulations performed by Fujimoto et al. (2014) show that the most massive clouds form in a high-interaction environment, namely in the dense bar region, to conclude that cloud collisions are an efficient way to build more massive clouds from smaller ones. They further test the star formation model of Tan (2000) and find a slope of the KS law of $N \sim 2$ instead of 1.4 in accordance with the observations of Pan et al. (2014). Simulations performed of Tasker & Tan (2009) and Dobbs et al. (2015) find that the collision time-scale is a small fraction (1/5) of the orbital time, in accordance with Tan (2000).

6.2.2 Observations

On the observational side, Seigar (2005) finds a strong and significant anticorrelation between the mean shear rate as calculated on the scale of the whole galaxy and the mean specific SFR (SSFR) in 33 galaxies, however he finds a weak relation between the shear rate and the SFR surface density. Similarly, Colombo et al. (2018) find a similar trend in which the Σ_{sfr} decreases with increasing shear. It is important to note that both of these studies are performed on disc-averaged quantities (the scale of the whole galaxy or kpc scales) and are not resolved to regions within the disc for both the SFRs and for the rotation curves. The shear rate definition $1 - \beta \equiv \frac{A}{\Omega}$ that these authors use is only valid when assuming a constant gradient to the rotation curve (this definition of shear is a dimensionless parameter where the Oort parameter is normalized to the angular frequency Ω) and it does not measure shear changes as a function of the galactic radius. While this reasoning may work on large scales, it fails when concerned with smaller scales; in fact the gradient of a rotation curve changes throughout the galactic disc and these changes affect significantly the shear velocities and vorticity.

Meidt et al. (2013) investigate the dynamics of gas in the inner 9 kpc of M51 and find that areas with low shear (as traced by the first Oort parameter A) are associated with low star formation efficiency (SFE), while other areas with high shear are associated with high SFE. They hence argue that shear cannot be the agent preventing

star formation in these locations and another source of stabilization is required. Suwannajak et al. (2014) use data from Leroy et al. (2013) to test several star formation laws in the discs of 16 nearby galaxies on scales of few hundreds of parsecs. They find an increase of SFE per orbit in regions of strong galactic shear, consistent with the cloud–cloud collision model of Tan (2000). Our results echo the results of these two authors.

In the context of the Milky Way, by analysing the southern spiral arm on scales of 0.5 kpc, Luna et al. (2005) find that massive star formation is enhanced in areas of solid body rotation and reduced in regions of strong shear to conclude that shear is a limiting factor for star formation activity. On smaller scales, Dib et al. (2012) investigate the effect of shear in the Milky Way on the scale of few parsecs (730 clouds with sizes from 0.2 to 35 pc), using the stability parameter derived by Hunter, Whitaker & Lovelace (1998b) and deriving the first Oort parameter from azimuthally averaged published rotation curve. They find no effect of shear on the SFE, that is the SFR surface density per gas surface density $\frac{\Sigma_{\text{sfr}}}{\Sigma_{\text{gas}}}$, and hence it is unlikely to be a dominant mechanism in determining the SFE of clouds. They argue that stellar feedback and magnetic fields may be more important stabilizing parameters than shear. Thilliez et al. (2014) use the same approach as Dib et al. (2012) to analyse GMCs in the LMC, and find no effect of galactic shear on the SFE. They conclude that once the GMC are formed, their SFE does not depend on the shear parameter or the galactic tidal effects.

It is important to note that the maximum value for A that is considered by Dib et al. (2012) is $\sim 35 \text{ km s}^{-1} \text{ kpc}^{-1}$ (that is the maximum value given by the rotation curve used at galactic radius of $\sim 3 \text{ kpc}$). Our rotation curves show values much larger than this. Our results echo theirs as long as the values of A are small, however this is not true for large values of A where shear velocities are extreme. Furthermore, shear velocity depends on the radial ranges over which they are measured (the variable b in equation 2). Dib et al. (2012) sample scales of a few tens of parsecs and at these distances shear velocity is insignificant and cannot account for encounter velocities that are sufficient to trigger star formation (on radial separations of 10 pc the shear velocity will be in the range of few km s^{-1} which is much less than the velocity dispersion). In this paper, the scales range a few hundred parsecs which causes the values of shear velocities to increase significantly. Therefore the scale at which the process is investigated is of major importance and studies done at different scales may lead to different results. In fact, quantities such as the gas density, the velocity dispersion and the SFR surface densities measured in the galaxy disc are not constant at any scale in the ISM and strongly depend on the distances over which they are measured (Elmegreen & Scalo 2004; McKee & Ostriker 2007; Calzetti, Liu & Koda 2012). The ISM is clumpy and turbulent, and regions of star formation on small scales have much larger densities and different kinematics than the averaged densities and kinematics on large scales. Calzetti et al. (2012) argue that both the slope and the scatter of the KS relation depend on the size of the subgalactic region sampled. The well-known Toomre criterion is built on the assumption that the variables defining it are consistent and well defined on all scales, however this is not the case, and this led researchers to build a modified stability criterion taking into account the different scales (Romeo, Burkert & Agertz 2010).

7 CONCLUSIONS

We have investigated the effect of differential rotation on SFR surface density in the discs of 17 low-redshift spiral galaxies, using 679 measurements on scales of few hundred parsecs. We built rotation curves and extracted the first and the second Oort parameters A and

B , respectively a measure of shear and vorticity in a differentially rotating disc. We measured the SFR surface densities at matching scales, in azimuthally averaged rings again sampling scales of a few hundred parsecs. We used two sets of data with different methods to derive our variables: For the first set of data, the optical galaxies, the rotation curves were extracted using long-slit spectroscopy and the star formation from narrow-band $H\alpha$ photometry (James et al. 2004). The second set was taken from the literature with rotation curves extracted using a tilted rings model from H I integral field spectroscopy from the THINGS galaxy survey (Walter et al. 2008) and star formation extracted using a combined data of FUV and NIR from Leroy et al. (2008).

Our main results can be summarized as follows:

(i) We find an empirical relation linking the total SFR surface density distribution in annular rings sampled on scales of few hundreds parsecs, and the Oort parameters A and B such that $\log \frac{\Sigma_{\text{SFR}}}{\Sigma_{\text{SFR}_{\text{total}}}} \propto \log[2A^2 + 5B^2]$.

(ii) We argue that the SFRs at these scales are driven by cloud–cloud collisions. The term $[2A^2 + 5B^2]$ is proportional to the total kinetic energy of collisions, where clouds collide at shear velocities proportional to A . Spinning takes place at angular frequencies proportional to B , that is driven by the differential rotation.

(iii) We find that for low values of A the cloud–cloud collisions are not an effective trigger for star formation since the shear velocities are too low on scales <100 pc.

(iv) This empirical relation can predict how the total SFR of the galaxy is distributed through the disc knowing only a rotation curve without the need of gas data. It may be also used the other way around: knowing the SFR density distribution throughout the disc, one can predict a rotation curve. This relation can be taken in account in numerical simulations investigating the evolution of galaxies, or it can be used for distant galaxies for which the rotation curves are measured but the resolved SFRs are not resolved.

Future work should include a much larger sample to investigate trends related to galaxy classification. Azimuthally averaged SFRs smooth out the effect of density waves patterns and a rotation curve is only a mean value of the rotation velocity across the disc and does not describe spatially resolved velocities. One approach would be to investigate the effect of rotation in spatially resolved regions rather than azimuthally averaged quantities both for the star formation and for the rotation curves. Our simplified interpretation can be tested through dynamical models, and since the shape of the rotation curves is of crucial importance, simulations with varying shapes, and different gradients should be tested. Furthermore, these models can show whether and on what scales dense clouds rotate within differentially rotating discs.

ACKNOWLEDGEMENTS

We are very grateful to the anonymous referee for his report which helped us improve the content of this study. We thank Fabien Walter and Erwin de Blok for providing the THINGS rotation curves in a computer readable form. We also thank Charles Lada and Jonathan Tan for useful discussions. We thank Sue Percival for obtaining and reducing the optical spectroscopy, Christina Schoettler for proof reading and useful comments, Adrian Jannetta for double checking some of our mathematical statistical analysis, Cyrine Nehme, Ziad Sakr and Bassem Sabra for general discussions. Charles Aouad would like to thank Gaby Issa El khoory for insightful explanation about the concept of shear when he was still an undergrad student 25 yr ago. IC's research is supported by the Smithsonian Astro-

physical Observatory Telescope Data Center, the Russian Science Foundation grant 19-12-00281 and the Program of development at M.V. Lomonosov Moscow State University through the Leading Scientific School 'Physics of stars, relativistic objects and galaxies'.

The INT is operated on the island of La Palma by the Isaac Newton Group in the Spanish Observatorio del Roque de los Muchachos of the Instituto de Astrofísica de Canarias. This research has made use of the NASA/IPAC Extragalactic Database (NED) which is operated by the Jet Propulsion Laboratory, California Institute of Technology, under contract with the National Aeronautics and Space Administration. This work made use of 'THINGS' (Walter et al. 2008).

DATA AVAILABILITY

The data underlying this article are available in the H_I Nearby Galaxy Survey at <http://www2.mpia-hd.mpg.de/THINGS/Data.html> and in the Cambridge Astronomy Survey Unit in the archives of the Isaac Newton Group of telescopes at <http://casu.ast.cam.ac.uk/surveys-projects/adc>.

REFERENCES

- Anathpindika S., 2009a, *A&A*, 504, 437
 Anathpindika S., 2009b, *A&A*, 504, 451
 Anathpindika S. V., 2010, *MNRAS*, 405, 1431
 Barnes A. T., Longmore S. N., Battersby C., Bally J., Kruijssen J. M. D., Henshaw J. D., Walker D. L., 2017, *MNRAS*, 469, 2263
 Bigiel F., Leroy A., Walter F., Brinks E., de Blok W. J. G., Madore B., Thornley M. D., 2008, *AJ*, 136, 2846
 Binney J., Merrifield M., 1998, *Galactic Astronomy*, Princeton Univ. Press, Princeton, NJ
 Binney J., Tremaine S., 2008, *Galactic Dynamics: Second Edition*, Princeton Univ. Press, Princeton, NJ
 Boissier S., Prantzos N., Boselli A., Gavazzi G., 2003, *MNRAS*, 346, 1215
 Boss A. P., Keiser S. A., 2013, *ApJ*, 764, 136
 Braine J., Rosolowsky E., Gratier P., Corbelli E., Schuster K. F., 2018, *A&A*, 612, A51
 Braine J., Hughes A., Rosolowsky E., Gratier P., Colombo D., Meidt S., Schinnerer E., 2019, *A&A*, 633, A17
 Calzetti D., Liu G., Koda J., 2012, *ApJ*, 752, 98
 Cappellari M., Emsellem E., 2004, *PASP*, 116, 138
 Chilingarian I. V., Prugniel P., Sil'chenko O. K., Afanasiev V. L., 2007, *MNRAS*, 376, 1033
 Chilingarian I., Beletsky Y., Moran S., Brown W., McLeod B., Fabricant D., 2015, *PASP*, 127, 406
 Colling C., Hennebelle P., Geen S., Iffrig O., Bournaud F., 2018, *A&A*, 620, A21
 Colombo D. et al., 2018, *MNRAS*, 475, 1791
 Currie M. J., Berry D. S., Jenness T., Gibb A. G., Bell G. S., Draper P. W., 2014, in Maset N., Forshay P., eds, *ASP Conf. Ser.*, Vol. 485, *Astronomical Data Analysis Software and Systems XXIII*. Astron. Soc. Pac., San Francisco, p. 391
 Davies L. J. M. et al., 2016, *MNRAS*, 461, 458
 de Blok W. J. G., Bosma A., 2002, *A&A*, 385, 816
 de Blok W. J. G., Walter F., Brinks E., Trachternach C., Oh S. H., Kennicutt R. C. J., 2008, *AJ*, 136, 2648
 Dewangan L. K., Ojha D. K., Zinchenko I., Baug T., 2018, *ApJ*, 861, 19
 Dib S., Galván-Madrid R., Kim J., Vázquez-Semadeni E., 2008, in Charbonnel C., Combes F., Samadi R., eds, *SF2A-2008*. p. 309, preprint ([arXiv:0808.3305](https://arxiv.org/abs/0808.3305))
 Dib S., Walcher C. J., Heyer M., Audit E., Loinard L., 2009, *MNRAS*, 398, 1201
 Dib S., Hennebelle P., Pineda J. E., Csengeri T., Bontemps S., Audit E., Goodman A. A., 2010, *ApJ*, 723, 425
 Dib S., Helou G., Moore T. J. T., Urquhart J. S., Dariush A., 2012, *ApJ*, 758, 125

- Dobbs C. L., Pringle J. E., Duarte-Cabral A., 2015, *MNRAS*, 446, 3608
- Elmegreen B. G., 1987, in Morfill G. E., Scholer M., eds, NATO ASIC Proc. 210: Physical Processes in Interstellar Clouds. p. 105
- Elmegreen B. G., 1993, *ApJ*, 419, L29
- Elmegreen B. G., Scalo J., 2004, *ARA&A*, 42, 211
- Elson E. C., de Blok W. J. G., Kraan-Korteweg R. C., 2012, *AJ*, 143, 1
- Enokiya R., Torii K., Fukui Y., 2019, Astron. Soc. of Japan, preprint (arXiv:1910.03308)
- Escala A., Larson R. B., 2008, *ApJ*, 685, L31
- Federrath C., 2013, *MNRAS*, 436, 1245
- Forbrich J., Lada C. J., Muench A. A., Alves J., Lombardi M., 2009, *ApJ*, 704, 292
- Fujimoto Y., Tasker E. J., Habe A., 2014, *MNRAS*, 445, L65
- Fujita S. et al., 2019, *ApJ*, 872, 49
- Fukui Y. et al., 2014, *ApJ*, 780, 36
- Fukui Y. et al., 2015, *ApJ*, 807, L4
- Fukui Y., Inoue T., Hayakawa T., Torii K., 2019, preprint (arXiv:1909.08202)
- Furukawa N., Dawson J. R., Ohama A., Kawamura A., Mizuno N., Onishi T., Fukui Y., 2009, *ApJ*, 696, L115
- Gammie C. F., Ostriker J. P., Jog C. J., 1991, *ApJ*, 378, 565
- Gil de Paz A. et al., 2007, *ApJS*, 173, 185
- Gilden D. L., 1984, *ApJ*, 279, 335
- Guo Y. et al., 2015, *ApJ*, 800, 39
- Habe A., Ohta K., 1992, *PASJ*, 44, 203
- Hocuk S., Spaans M., 2011, *A&A*, 536, A41
- Hunter D. A., Elmegreen B. G., Baker A. L., 1998a, *ApJ*, 493, 595
- Hunter, James H. J., Whitaker R. W., Lovelace R. V. E., 1998b, *ApJ*, 508, 680
- James P. A. et al., 2004, *A&A*, 414, 23
- Johnston K. G., Beuther H., Linz H., Schmiedeke A., Ragan S. E., Henning T., 2014, *A&A*, 568, A56
- Kelson D. D., 2003, *PASP*, 115, 688
- Kennicutt R. C. Jr., 1998a, *ApJ*, 498, 541
- Kennicutt R. C. Jr., 1998b, *ApJ*, 498, 541
- Kennicutt R. C. J. et al., 2007, *ApJ*, 671, 333
- Khoperskov S. A., Vasiliev E. O., 2017, *MNRAS*, 468, 920
- Kim C.-G., Kim W.-T., Ostriker E. C., 2011, *ApJ*, 743, 25
- Kogure T., 1965, *PASJ*, 17, 385
- Kruijssen J. M. D., Longmore S. N., Elmegreen B. G., Murray N., Bally J., Testi L., Kennicutt R. C., 2014, *MNRAS*, 440, 3370
- Krumholz M. R., 2013, *MNRAS*, 436, 2747
- Krumholz M. R., McKee C. F., 2005, *ApJ*, 630, 250
- Krumholz M. R., McKee C. F., Tumlinson J., 2009, *ApJ*, 699, 850
- Kumari N., Irwin M. J., James B. L., 2020, *A&A*, 634, A24
- Kutner M. L., Tucker K. D., Chin G., Thaddeus P., 1977, *ApJ*, 215, 521
- Lada C. J., Lombardi M., Alves J. F., 2010, *ApJ*, 724, 687
- Lee J. C., Kennicutt R. C., Funes S. J. J. G., Sakai S., Akiyama S., 2007, *ApJ*, 671, L113
- Leroy A. K., Walter F., Brinks E., Bigiel F., de Blok W. J. G., Madore B., Thornley M. D., 2008, *AJ*, 136, 2782
- Leroy A. K. et al., 2013, *AJ*, 146, 19
- Li G.-X., 2017, *MNRAS*, 471, 2002
- Longmore S. N. et al., 2013, *MNRAS*, 429, 987
- Loren R. B., 1976, *ApJ*, 209, 466
- Luna A., Wall W., Carrasco L., Bronfman L., Hasegawa T., 2005, in Hidalgo-Gómez A. M., González J. J., Rodríguez Espinosa J. M., Torres-Peimbert S., eds, Revista Mexicana de Astronomía y Astrofísica Conference Series, Vol. 24. p. 254
- Martin C. L., Kennicutt R. C. J., 2001, *ApJ*, 555, 301
- McKee C. F., Ostriker E. C., 2007, *ARA&A*, 45, 565
- Meidt S. E. et al., 2013, *ApJ*, 779, 45
- Morokuma-Matsui K., Muraoka K., 2017, *ApJ*, 837, 137
- Murray N., Quataert E., Thompson T. A., 2010, *ApJ*, 709, 191
- Ohama A. et al., 2018, *PASJ*, 70, S45
- Onodera S. et al., 2010, *ApJ*, 722, L127
- Osterbrock D. E., Ferland G. J., 2006, Astrophysics of Gaseous Nebulae and Active Galactic Nuclei, Univ. Science Books, U.S. 2nd ed. 2005 edition.
- Pan H.-A., Kuno N., Hirota A., 2014, *PASJ*, 66, 27
- Querejeta M. et al., 2019, *A&A*, 625, A19
- Ricotti M., Ferrara A., Miniati F., 1997, *ApJ*, 485, 254
- Roman-Duval J., Heyer M., Brunt C. M., Clark P., Klessen R., Shetty R., 2016, *ApJ*, 818, 144
- Romeo A. B., Burkert A., Agertz O., 2010, *MNRAS*, 407, 1223
- Rosolowsky E., Engargiola G., Plambeck R., Blitz L., 2003, *ApJ*, 599, 258
- Salim D. M., Alatalo K., Federrath C., Groves B., Kewley L. J., 2020, *ApJ*, 893, 26
- Salmeron R., 2009, preprint (arXiv:0903.1673)
- Savitzky A., Golay M. J. E., 1964, Anal. Chem., 36, 1627
- Schmidt M., 1959, *ApJ*, 129, 243
- Schruba A. et al., 2011, *AJ*, 142, 37
- Scoville N. Z., Sanders D. B., Clemens D. P., 1986, *ApJ*, 310, L77
- Seigar M. S., 2005, *MNRAS*, 361, L20
- Shadmehri M., Nejad-Asghar M., Khesali A., 2010, *Ap&SS*, 326, 83
- Sil'chenko O. K., Chilingarian I. V., Sotnikova N. Y., Afanasiev V. L., 2011, *MNRAS*, 414, 3645
- Silk J., 1997, *ApJ*, 481, 703
- Solomon P. M., Rivolo A. R., Barrett J., Yahil A., 1987, *ApJ*, 319, 730
- Spitzer, Lyman J., Schwarzschild M., 1951, *ApJ*, 114, 385
- Stark A. A., Blitz L., 1978, *ApJ*, 225, L15
- Suwannajak C., Tan J. C., Leroy A. K., 2014, *ApJ*, 787, 68
- Swaters R. A., Madore B. F., Trehella M., 2000, *ApJ*, 531, L107
- Takahira K., Shima K., Habe A., Tasker E. J., 2018, *PASJ*, 70, S58
- Tan J. C., 2000, *ApJ*, 536, 173
- Tasker E. J., Tan J. C., 2009, *ApJ*, 700, 358
- Thilliez E., Maddison S. T., Hughes A., Wong T., 2014, *PASA*, 31, e003
- Toomre A., 1964, *ApJ*, 139, 1217
- Tsuge K. et al., 2019, *ApJ*, 871, 44
- Vogt N. P., Haynes M. P., Giovanelli R., Herter T., 2004, *AJ*, 127, 3325
- Wada K., Spaans M., Kim S., 2000, *ApJ*, 540, 797
- Walter F., Brinks E., de Blok W. J. G., Bigiel F., Kennicutt R. C. J., Thornley M. D., Leroy A., 2008, *AJ*, 136, 2563
- Weidner C., Bonnell I. A., Zinnecker H., 2010, *ApJ*, 724, 1503
- Wong T., Blitz L., 2002, *ApJ*, 569, 157
- Wyse R. F. G., 1986, *ApJ*, 311, L41

APPENDIX A: DATA FOR ALL GALAXIES IN THE SAMPLE

The upper panel of each figure represents the rotation curve in km s^{-1} , the blue and the red dots represent the receding and the approaching arms, respectively, the squares are the mean values and the black line is a polynomial fit of varying degrees using a least-square fit method. The second panel represents the two Oort parameters A and B in $\text{km s}^{-1} \text{kpc}^{-1}$. On the third panel, we plot the fraction of the SFR surface density (the SFR in annular rings of few hundred of parsecs normalized to the total SFR of the galaxy) in grey filled stars $\log \frac{\Sigma_{\text{SFR}}}{\text{SFR}_{\text{total}}}$ with the value $\log[2A^2 + 5B^2]$ in empty diamonds. The x -axis represents the galactic radius in kpc.

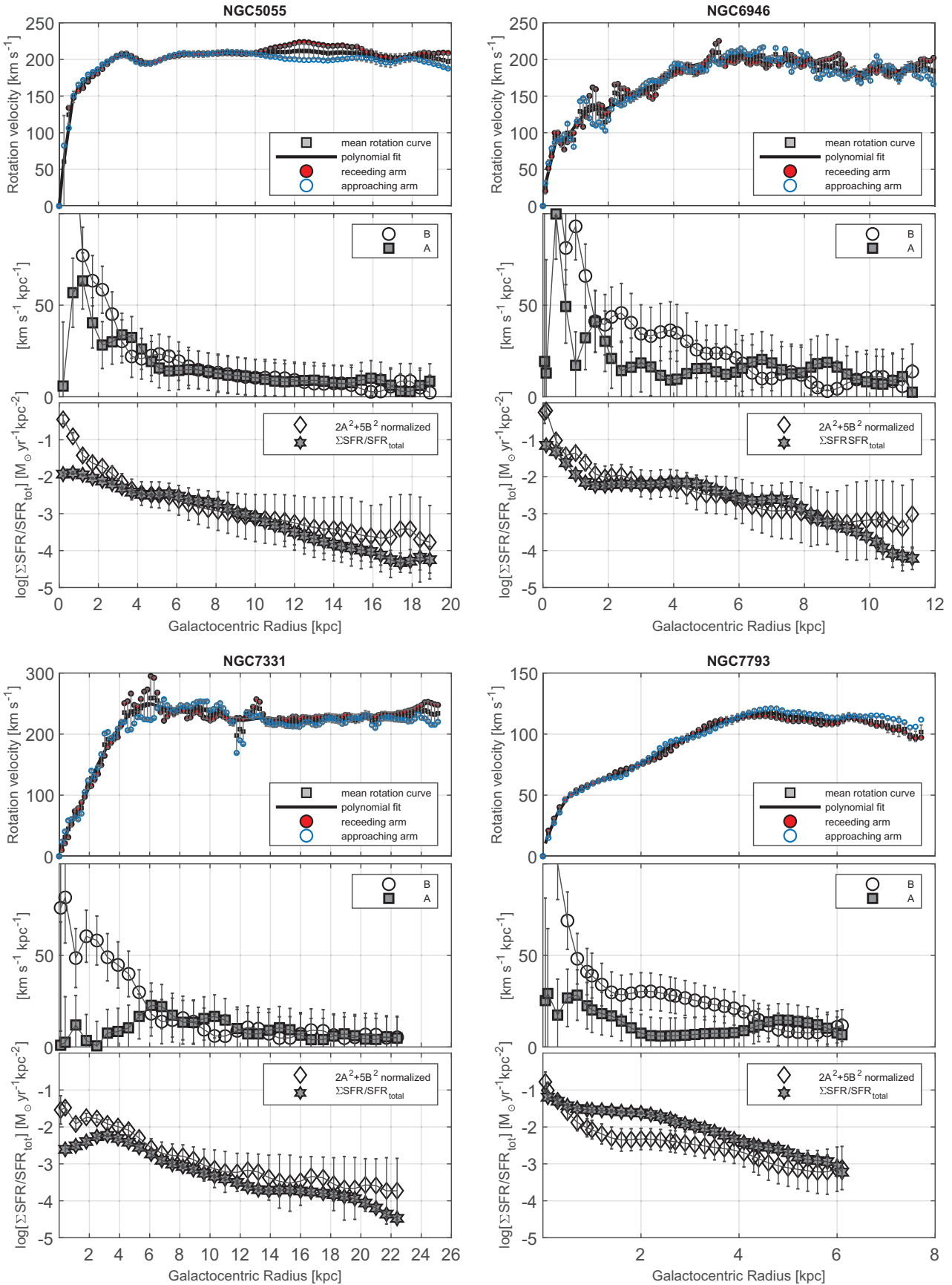


Figure A1.

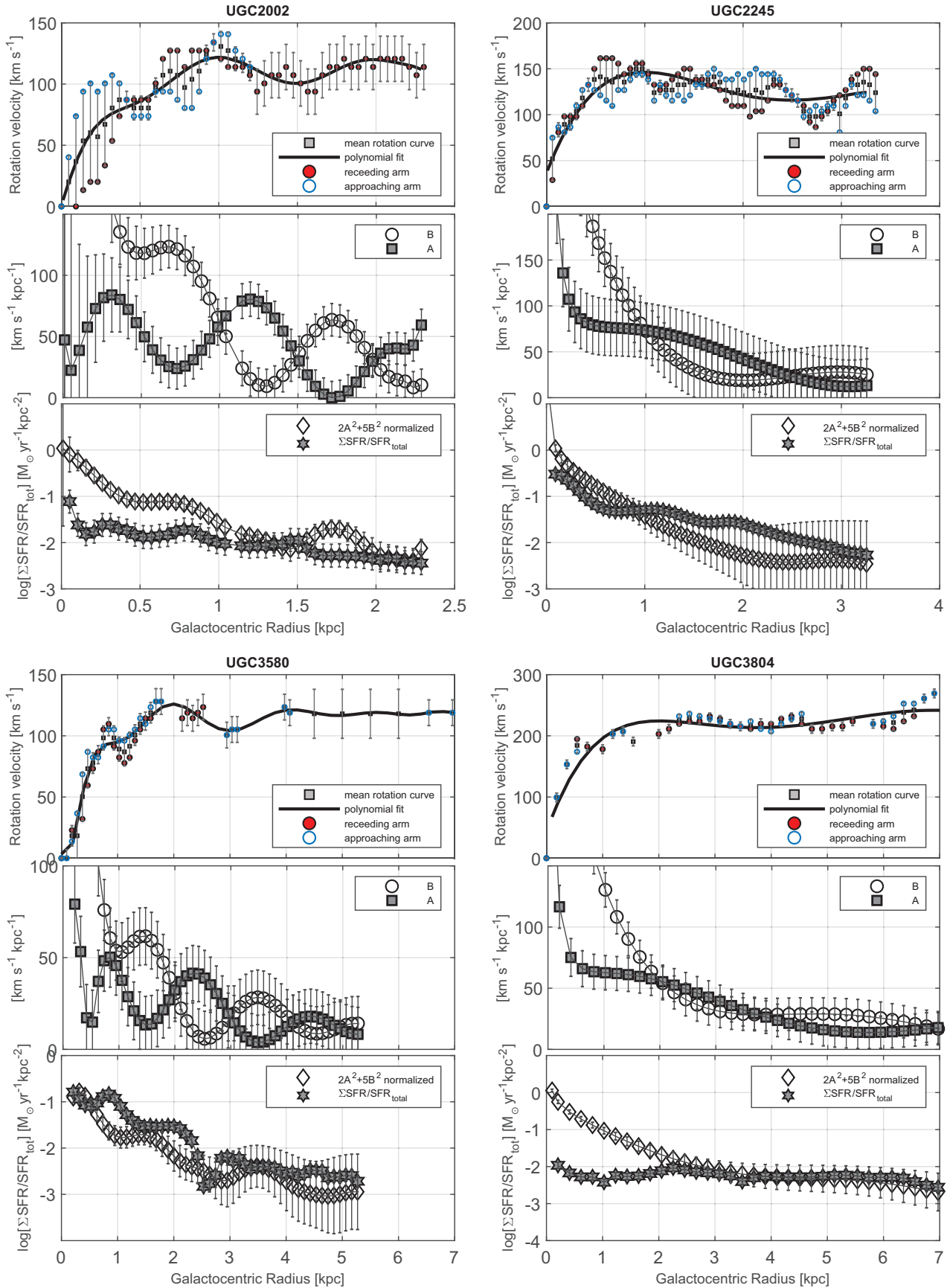


Figure A1. *continued.*

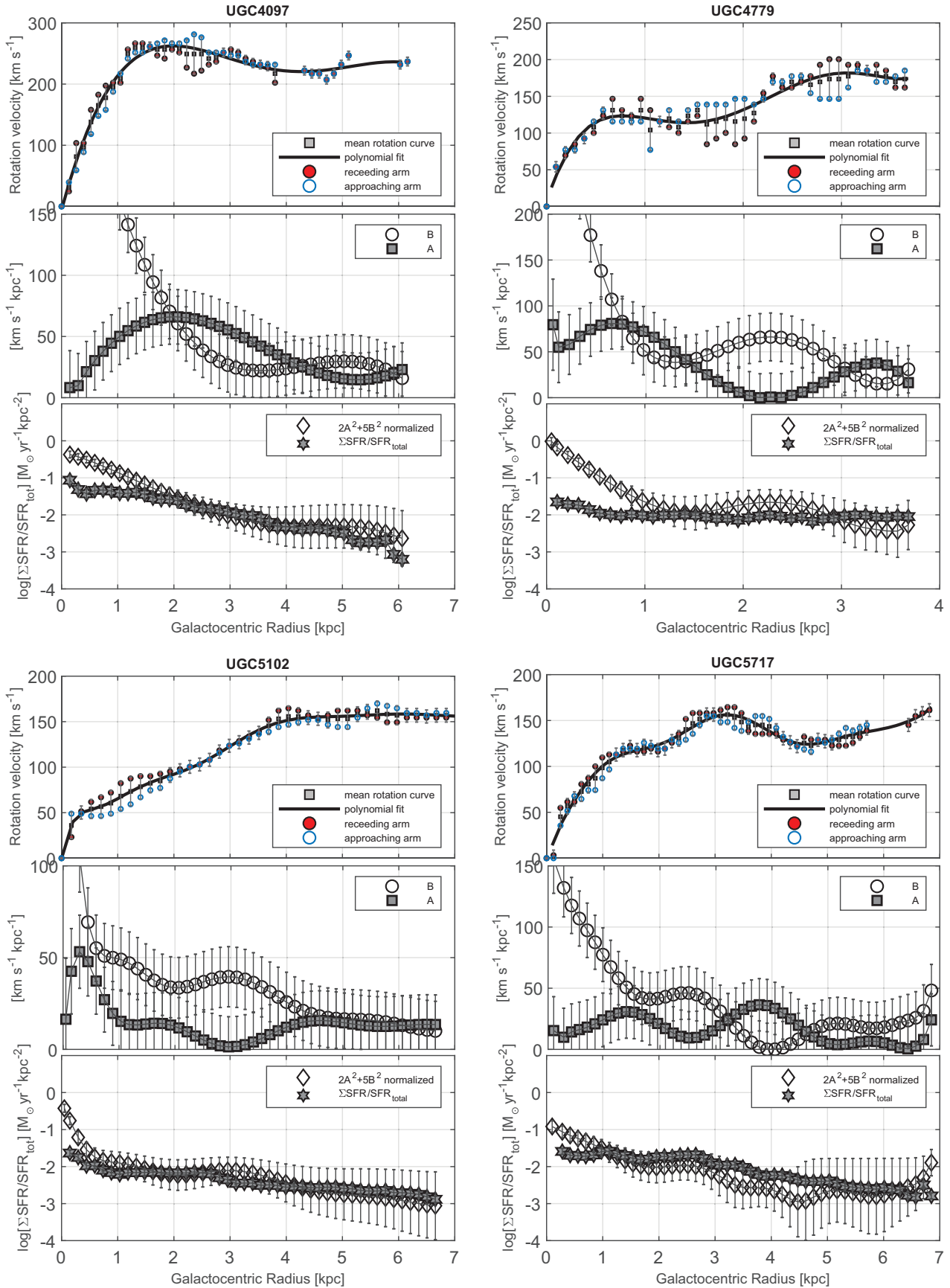


Figure A1. continued.

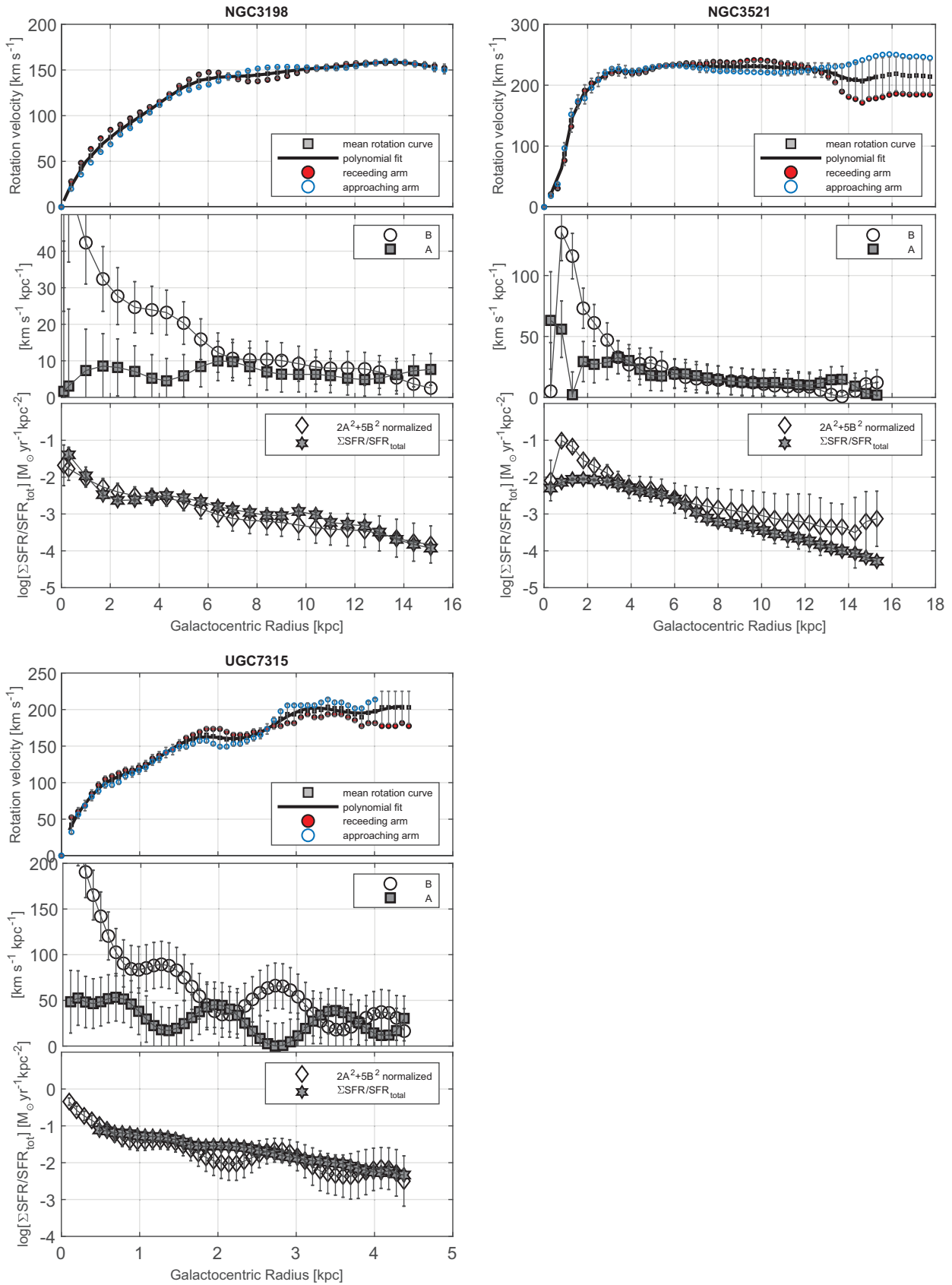


Figure A1. *continued.*