



## **Phase III Le Modulor /Phase IV Intersections Art/Architecture**

**April Virgoe**

The output consists of two sets of paintings that were included in the following two related exhibitions: 'Phase III Le Modulor', Galerie HLM, Marseilles, and 'Phase IV Intersections: Art/Architecture', Stephen Lawrence Gallery, University of Greenwich, London.

### **Research process**

Virgoe was invited to exhibit in 'Phase III Le Modulor' in Marseilles, 2019. For this a new body of work was produced, which responded to the 1948 text by LeCorbusier, and to be exhibited in the town where the Unite D'Habitation was realised. 'Phase IV' brought together artists from the UK and France along with 'Outside Architecture' research group from the University of Greenwich.

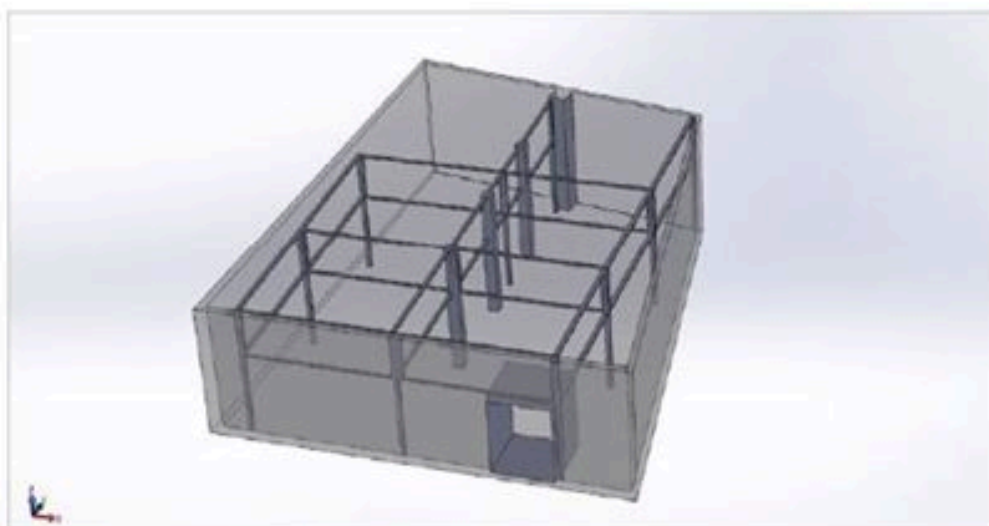
### **Research insights**

For the first exhibition Virgoe produced a series of paintings using a loosely modular system of repeated units within the paintings, which to some extent reflect the adaptations that LeCorbusier himself made to his system. These were conceived as a series in a grid format, and as such bear a relationship to the numerous layout iterations in the text. For 'Phase IV', Virgoe exhibited four paintings that consider the space between architecture and abstraction.

### **Dissemination**

Phase III was a group exhibition at Galerie HLM, Marseilles, and Phase IV was a group exhibition at the Stephen Lawrence Gallery, Greenwich.

## Phase III — Le Modulor



Maquette structure Modulor. Drawing: Christophe Perreaud

*Phase III — Le Modulor*, is the third exhibition in a series of four (Cambridge, Toulouse, Marseille, London) organized by Benet Spencer and David Ryan from Anglia Ruskin University, Cambridge, exploring the relationship between painting, drawing and architecture. *Phase III* is developed in partnership with Les Beaux-Arts de Marseille, the public art school of this city, and with the participants of its research seminar *ARC Modulor*. Collaborative partners also include the University of Greenwich, London and Réseau Peinture which is a research network between art schools and universities in Europe.

The presence in Marseille of Le Corbusier's famous building *La Cité Radieuse* is the main background of this exhibition. More specifically, a key starting point is an interest in the *Modulor*, an anthropometric scale of proportions created by Le Corbusier in 1948 and used within his *Unité d'habitation* buildings. *The Modulor* embodies a "range of harmonious measurements on a human scale, universally applicable to architecture". Located within a Western humanist tradition which goes back to Protagoras "Man, a measure of all things", and subsequently revived in Leonardo da Vinci's *Vitruvian Man*, Le Corbusier's *Modulor* can be read as an updated version of a masculine universalism. It represents as a normative the body of a man of 1.83 m, around whom Le Corbusier conceived the structure and the size of the "housing units".

After one year of work, the participants of the *ARC Modulor* decided to build a wooden structure which is deliberately cumbersome. This structure, constructed with the help of the staff of Les Beaux-Arts de Marseille is physically and conceptually an introduction to the theme. It refers to the measurements of an apartment in Le Corbusier's "Unité d'habitation".

The space of the gallery "HLM" is thus restructured and allows to cohabit pieces by:

- David Ryan, Benet Spencer and their guests, Bernice Donszelmann, Jaime Gili, Olivier Gourvil, Tim Renshaw, Anna Salamon, April Virgoe, Daniela Yaneva.
- MA or PhD students from Anglia Ruskin University and University of Greenwich, School of Design Architecture programme.
- Participants and guests of the *ARC Modulor* in Les Beaux-Arts de Marseille: Luisa Ardila, Hyungsub Choi, Jagna Ciuchta, Silva Dagson, Philippe Delahautemaison, Jaime Gili, Lise Guehenneux, Chourouk Hriedh, Erica Monzali, Issa-Salman Muslum, Hannibal Nseir, Christophe Perreaud, Jean-Baptiste Sauvage, Katharina Schmidt, Sarah le Treut, Jun Wei, Jin Xu.

---

Gallery HLM, 20 rue Saint Antoine — 2nd arr  
Exhibition open: 7th to 21st november 2019  
Private view: november 7th at 18h / Closes: november 21st at 18h  
Opening hours: tuesday to saturday from 14h to 19h

<https://www.marseilleexpos.com> — Réseau Peinture: <https://delapeinture.org/fr/>











# expo

## Phase III — Le Modulor

L'exposition Modulor est la troisième exposition d'une série de quatre (Cambridge, Toulouse, Marseille, Londres), organisée par Benet Spencer et David Ryan de la Cambridge School of Art, en coopération avec Les Beaux-Arts de Marseille (ARC Modulor) et le Réseau Peinture en écoles d'art.

Ces différentes présentations cherchent à explorer la relation entre dessin, peinture et architecture.

Dans cette partition de l'espace cohabitent avec leur travail :

David Ryan, Benet Spencer  
et leurs invités  
Bernice Donszelmann,  
Jaime Gill, Olivier Gourvil,  
Tim Renshaw, Anna Salamon,  
April Virgoe.

Des étudiant·e·s et enseignant·e·s  
de University of Greenwich,  
Faculty of Architecture.

Des participant·e·s et invité·e·s  
de l'ARC Modulor :

Luisa Ardila, Hyungsub Choi,  
Jagna Cluchta, Silva Dagson,  
Jaime Gill, Lise Guehenneux,  
Chourouk Hriech,  
Erica Monzali,  
Issa-Salman Muslum,  
Hannibal Nseir,  
Christophe Perreau,  
Jean-Baptiste Sauvage,  
Katharina Schmidt,  
Sarah le Treut,  
Jun Wei, Jin Xu.

\* Galerie HLM/  
Hors-les-Murs

20 rue Saint Antoine Marseille 2<sup>e</sup>  
Du mardi au samedi de 14h à 19h

**Vernissage**  
Jeudi 07 nov. à 18h

**Finissage**  
Jeudi 21 nov. à 18h

Les Beaux-Arts  
de Marseille

Réseau Peinture



UNIVERSITY  
GREENWICH

MARSEILLE  
EXPOS

07 — 21  
nov. 2019





## Phase IV : Intersections - Art / Architecture

15th January - 21st February 2020

**Stephen Lawrence Gallery  
and Project Space**

**University of Greenwich  
11 Stockwell Street, London SE10 9BD**

**Tuesday - Friday, 11am - 5pm  
Saturday, 11am - 4pm**

**Opening Event  
Weds, 15th January 18.00**

**Catalogue Launch and Symposium  
Friday, 14th and Saturday, 15th  
February**

Phase IV: Intersections - Art / Architecture is an exhibition and accompanying symposium that brings together projects stemming from higher education institutions in England and France, that are exploring interfaces between art and architecture. Phase IV is the fourth and last of a series of exhibitions led by Benet Spencer and Dr David Ryan from Cambridge School of Art, Anglia Ruskin University. The earlier phases saw collaborations, in February 2018, with Institut Supérieur des Arts Toulouse (Phase II - Imagining Architecture); and, in November 2019, with École Supérieure d'Art et de Design Marseille-Méditerranée (Phase III - le Modulor). Phase I in February 2016 at the Ruskin Gallery, Anglia Ruskin University, Cambridge was the first exhibition, in a series developed in conjunction with Réseau Peinture, a project that fosters collaboration between European schools of art and design, initiated by the artist, Olivier Gourvil, from École Supérieure d'Art et Design Grenoble - Valence.

Throughout these four phases the project has grown, in the spirit of Réseau Peinture, to include parallel areas of research activity: part of the development of the Phase III exhibition included ARC Modulor, a research project between staff and students which ran at the École Supérieure d'Art in Marseille from November 2018. The Phase IV exhibition combines a wide range of artists who have been involved in different stages of the project, with architects and artists from the Stephen Lawrence Gallery series of Art-Architecture exhibitions held at University of Greenwich School of Design between 2014-19. Also featured will be contributors to Outside Architecture, an artist-led collaborative group founded in 2009 by Tim Renshaw, Bernice Donszelmann and Mary Maclean. Phase IV: Intersections - Art / Architecture marks an opportunity to gather these strands of activity, to take stock and evaluate what has become a growing discourse.

