

UNIVERSITY OF TROMSØ cruise report

Tromsø – Longyearbyen 08-07-13 to 21-07-13

R/V Helmer Hanssen

Cruise No. 2013007



PART I



**Sub-seabed CO₂ Storage: Impact on Marine Ecosystems (ECO2)
(A 7th Framework Programme EU project)**

*Institutt for Geologi, Dramsveien 201
Universitetet i Tromsø*

Stefan Bünz (chief scientist)

Table of Contents

PARTICIPANT LIST	3
INTRODUCTION AND OBJECTIVES	4
METHODS.....	6
Seismic methods.....	6
The P-Cable 3D seismic system.....	6
CTD and water sampling.....	8
Sediment sampling	9
PRELIMINARY RESULTS	10
Swath bathymetry onboard processing	10
CTD casts and water sampling.....	11
P-Cable 3D seismic onboard QC and processing.....	13
NARRATIVE OF THE CRUISE.....	18
ACKNOWLEDGEMENT	20
APPENDIX	21
CTD stations.....	21
Multicorer Stations.....	22
3D seismic line log (Lyngen)	23
3D seismic line log (Snøhvit).....	27

PARTICIPANT LIST

Stefan Bünz (chief scientist)	University of Tromsø, Norway
Alexandros Tasianas	University of Tromsø, Norway
Sunil Vadakkepuliambatta	University of Tromsø, Norway
Anoop Nair	University of Tromsø, Norway
Steinar Iversen	University of Tromsø, Norway
Andreia Plaza-Faverola	University of Tromsø, Norway
Sandra Hurter	University of Tromsø, Norway
Leif Tokle	University of Tromsø, Norway
Espen Valberg	University of Tromsø, Norway
Ola Eriksen	P-Cable AS, Oslo, Norway
Jens Greinert	Geomar, Germany
Manuel Bensi	OGS, Italy
Martina Kralj	OGS, Italy
Evgenia Martuganova	MSU, Moscow
Maria Ambrosimova	MSU, Moscow

INTRODUCTION AND OBJECTIVES

The ECO2 project sets out to assess the risks associated with the storage of CO₂ below the seabed. Carbon Capture and Storage (CCS) is regarded as a key technology for the reduction of CO₂ emissions from power plants and other sources at the European and international level. The EU will hence support a selected portfolio of demonstration projects to promote, at industrial scale, the implementation of CCS in Europe. Several of these projects aim to store CO₂ below the seabed. However, little is known about the short-term and long-term impacts of CO₂ storage on marine ecosystems even though CO₂ has been stored sub-seabed in the North Sea (Sleipner) for over 13 years and for 5 year in the Barents Sea (Snøhvit). Against this background, the proposed ECO2 project will assess the likelihood of leakage and impact of leakage on marine ecosystems. In order to do so ECO2 will study a sub-seabed storage site in operation since 1996 (Sleipner, 90 m water depth), a recently opened site (Snøhvit, 2008, 330 m water depth), and a potential storage site located in the Polish sector of the Baltic Sea (B3 field site, 80 m water depth) covering the major geological settings to be used for the storage of CO₂. Novel monitoring techniques will be applied to detect and quantify the fluxes of formation fluids, natural gas, and CO₂ from storage sites and to develop appropriate and effective monitoring strategies. Field work at storage sites will be supported by modelling and laboratory experiments and complemented by process and monitoring studies at natural CO₂ seeps that serve as analogues for potential CO₂ leaks at storage sites.

As part of the ECO2 project, the University of Tromsø conducted a cruise in 2011 to the Snøhvit area in the SW Barents Sea (Figure 1). A high-resolution P-Cable 3D seismic volume was acquired. This volume constitutes baseline data for monitoring studies. This year we intend to acquire a second 3D volume (monitor data) from the Snøhvit area. Additional, we will repeat some of the lines twice and in reversed direction in order to study the repeatability of the P-Cable acquisition for monitoring purposes. The primary objective of the hydrological and biogeochemical sampling in the Snohvit area is to study any possible effects of a Carbon Capture and Storage (CCS) site on the water column and on the bottom sediment.

The Snøhvit reservoir and storage site study area is located in the Hammerfest basin in the SW Barents Sea approximately 100 nm north off the coast of Norway (Figure 1). The working areas are in approx. 300 – 400 m water depths. The Snøhvit hydrocarbon field has been operated by Statoil since 2008. The reservoir lies in Jurassic sandstones at about 2 km depth. Beneath the reservoir formation, CO₂ is stored in Triassic sediments of the Tubaen formation and later in the bottom part of the Jurassic Stø formation. At Snøhvit, the analysis of conventional 3D seismic data resulted in the definition of stratigraphic boundaries of the overburden structure and the identification of faults, gas chimneys and shallow gas accumulations including the potential occurrence of a gas-hydrate related bottom-simulating reflection (Figure 1). Faults both at the Jurassic and Tertiary levels have been interpreted.

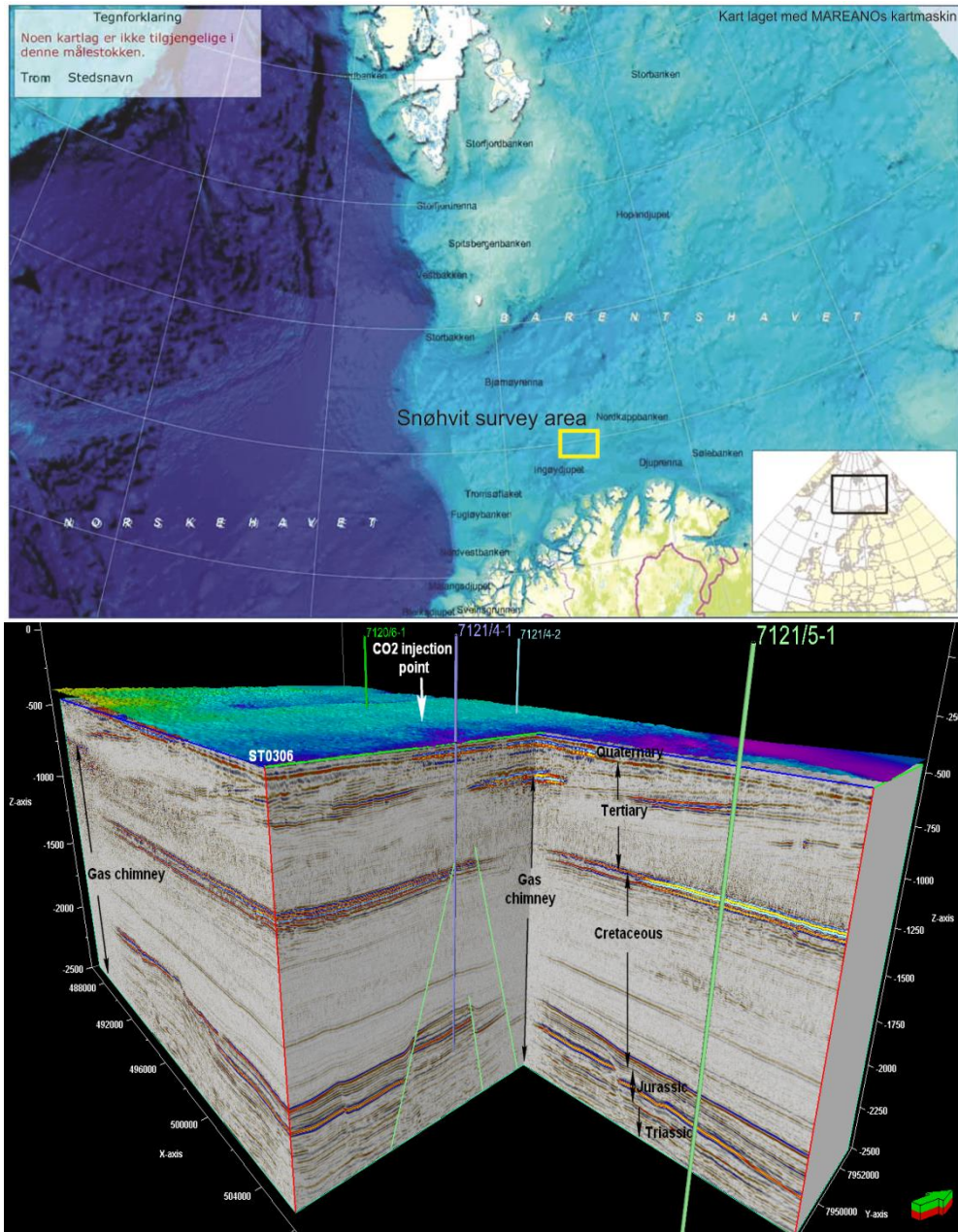


Figure 1: (top) Overview and location of the study area in the SW Barents Sea. (bottom) Perspective view of the Snøhvit study area based on conventional 3D seismic data. The Main reservoir is in the Jurassic Stø formation, whereas the CO₂ is stored beneath in the Triassic Tubæen formation. The shallow subsurface shows many amplitude anomalies that can be related to the presence of shallow gas and gas hydrates.

METHODS

Seismic methods

The ECO2 part of the R/V Helmer Hanssen cruise is aimed to acquire P-Cable high-resolution 3D seismic data over pockmark fields, gas chimneys, shallow gas accumulations, and potential gas hydrate locations at the Snøhvit CO₂ storage site. We plan to repeat the whole or parts of the first baseline P-Cable 3d seismic cube shot over the pockmark field in 2011.

The high-resolution P-Cable 3D seismic system was used together with a Granzow high-pressure (210bar) compressor and one mini-GI gun (15/15 in³). Onboard seismic processing and QC of P-Cable seismic data provided preliminary 3D cubes for quality assessment and geofluid interpretations.

During this cruise we used SIMRAD EM300 high-resolution multibeam seabed mapping (see report C), P-Cable high-resolution seismic, SIMRAD EK 60 38 and 18 kHz echolot, and the Edgetech Discover penetration echolot. CTD stations are carried out to extract information about different (T, S) properties of water masses to calculate the speed of sound for calibrating the EM300.

The P-Cable 3D seismic system

The P-Cable 3D high-resolution seismic system consists of a seismic cable towed perpendicular (cross cable) to the vessel's steaming direction (Figure 2). An array of multi-channel streamers is used to acquire many seismic lines simultaneously, thus covering a large area with close in-line spacing in a cost efficient way. The cross cable consists of two 50-m long and one 75-m long section with a total of 14 streamers attached to it. Including lead-in cables, the cross cable has a total length of 233 m between paravanes (doors) (Figure 2). The cross-cable is spread by two paravanes that due to their deflectors attempt to move away from the ship. The paravanes itself are towed using R/V Helmer Hanssen's large trawl winches. The spacing between the streamers is 12.5 m but due to curvature of the cross-cable, the effective spacing between the streamers may be shortened in cross line direction to about 6-12 m. Each digital streamer is 25 meters long and consists of an A/D-module and 8 channels. New Geometrics solid state streamers are used that are much less affected by sea swell and hence provide data with significantly less noise. The A/D-module converts the analogical signal from the channels to digital signals. The group spacing of channels along the streamer is of 3.125 m.

A 300-m long signal cable is run off the P-Cable winch and connects to the starboard termination of the cross cable. It contains wiring for power and data transmission. The data is transferred via Ethernet protocol. Ethernet-to-Coax switches at the ends of the signal cable allow data transmission over long distances. The digital data is recorded using Geometrics GeoEel software.

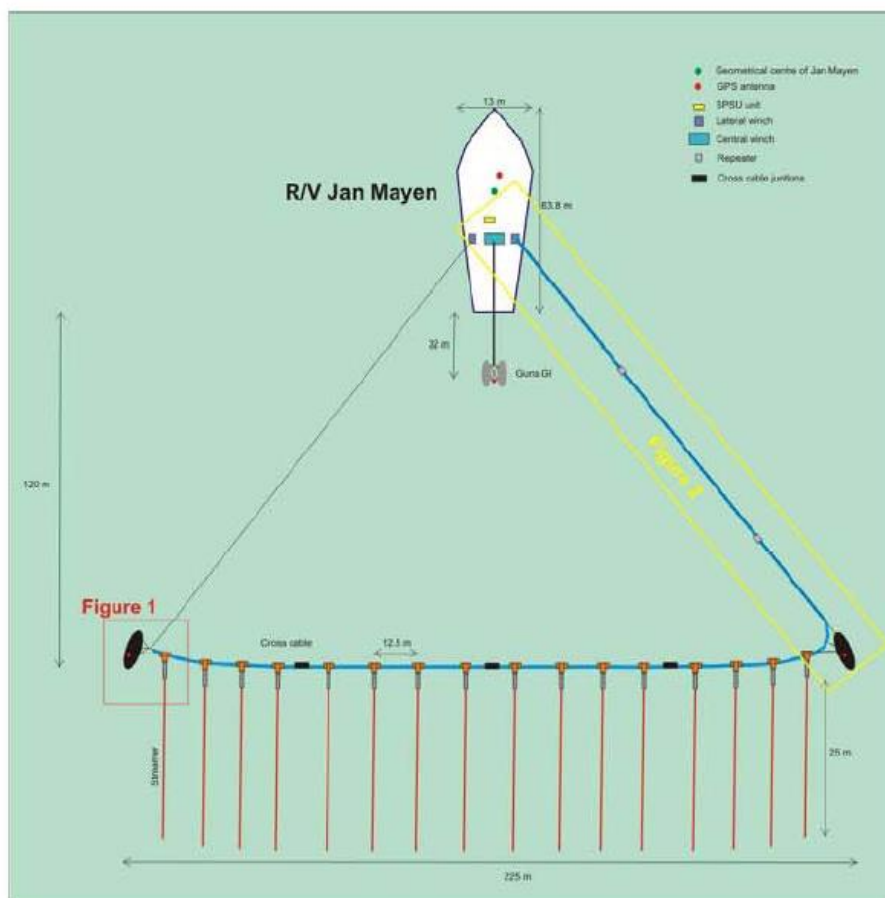
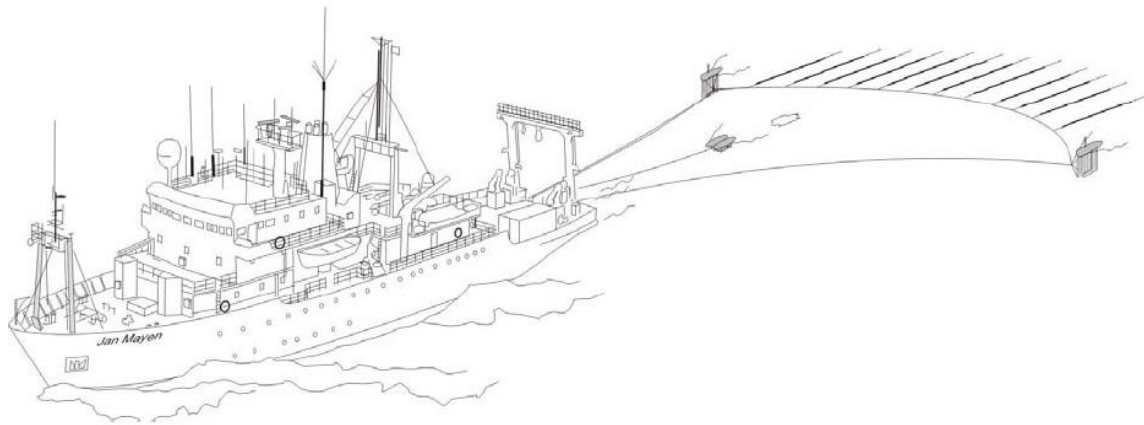


Figure 2: Schematic sketch (top) and technical drawing (bottom) of the P-Cable high-resolution 3D seismic system.

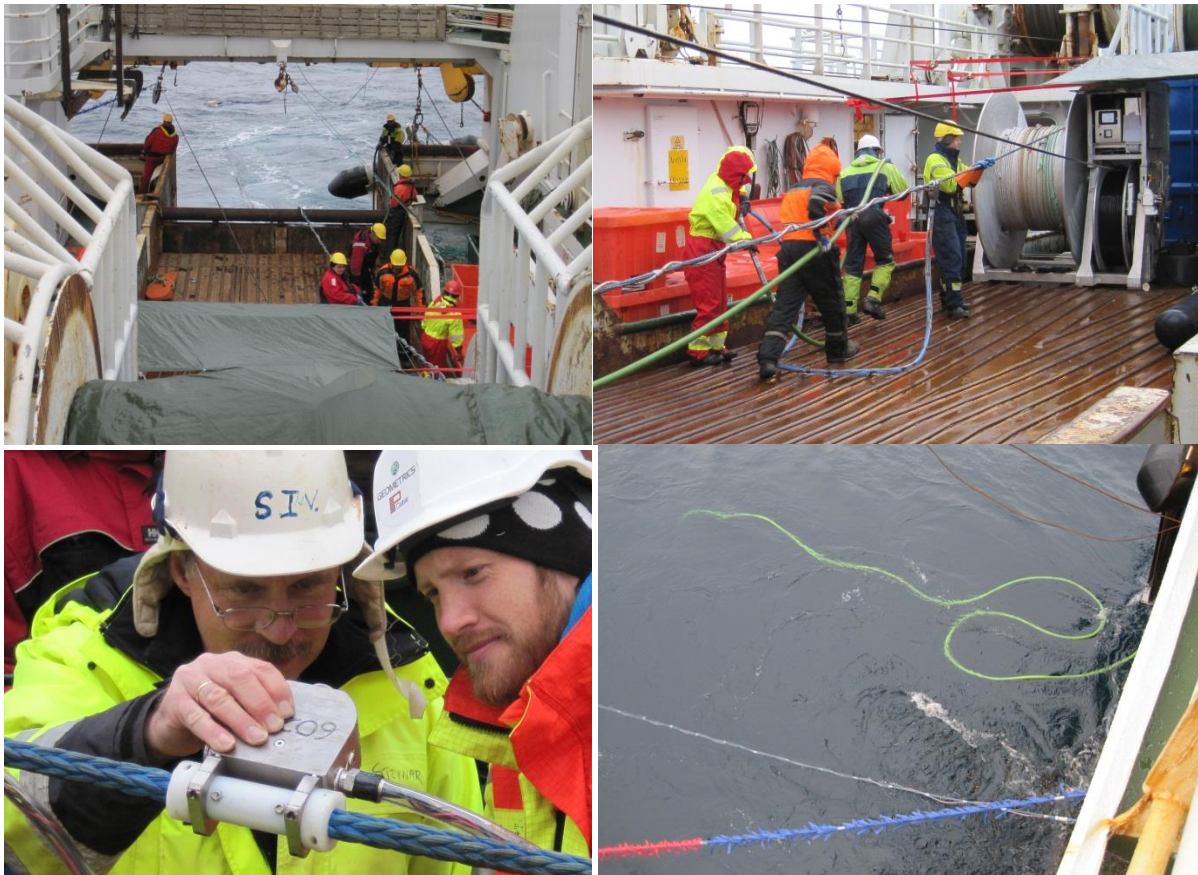


Figure 3: Images of the P-Cable system during deployment and recovery. Top left: the cross cable is being deployed, streamer sections are connected during deployment; top right: The cross cable is recovered and spooled back on the winch while streamers are disconnected from the cross cable. The small winch next to the cross cable holds the signal cable; bottom left: inspection of cross cable junction boxes during deployment and recovery; bottom right: signal cable (red-blue feathered), cross cable (helical cable in center) and solid state streamer (green) are deployed simultaneously.

CTD and water sampling

Conductivity-Temperature-Depth (CTD) is the oceanographer's standard tool for determining oceanic water masses. SeaBird's (SBE) 911plus CTD was used for oceanographic measurements. The following parameters were measured: temperature, conductivity and pressure (converted to depth), speed of sound, fluorescence and turbidity. The temperature sensor is located at the base of the Rosette, thereby being the first sensor to measure the undisturbed water mass on the downcast. Furthermore, water is pumped through a conductivity tube, in which seawater conductivity is measured. Continuous pump operation is essential to prevent boundary layers forming on the tube's edges, and should data sets indicate fault malfunctions the data sets are flagged or deleted. CTD data was acquired and processed using SBE's in-house "SBE Data Processing".

A rosette with 12 Niskin bottles (10L) was used for water samples collection. Dissolved oxygen concentration (Titrator, Winkler method) and pH (pHmeter) measurements were done directly onboard after each CTD cast (Fig. 1). Furthermore, the following analyses will be performed on the water samples (approximately 60) at the OGS laboratory: pH (spectrophotometric), CO₂, CH₄, Dissolved Inorganic Carbon (DIC), Dissolved Organic Carbon (DOC), Nutrients, Dissolved Organic Nitrogen and Phosphate. Additionally, 12 bottles of salinity samples were collected in order to check the stability of the conductivity sensor during the whole cruise.

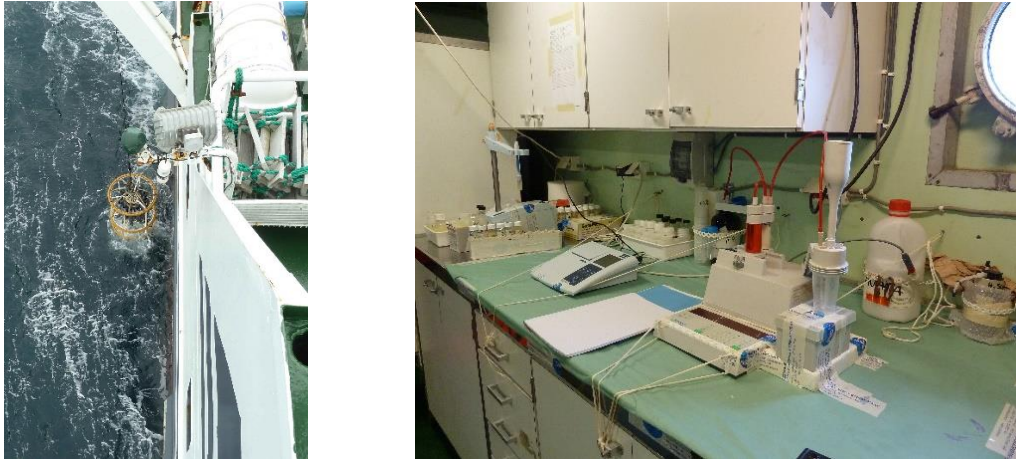


Figure 4: CTD SBE911plus (on the left) used for hydrological and biogeochemical water samples and instruments for dissolved oxygen concentration and pH analyses on board (on the right).

Sediment sampling

Sediment sampling was done using a multicorer system with 6 liners (Figure 4). A total of five multicorer stations were successfully completed. Two of these five stations are within larger pockmarks in the Snøhvit area, and one other station lies approximately 20 nm to the northwest and constitutes a reference station. At least 4 of the 6 liners were filled with sediments at all stations and retrieval was up to about 40 cm. Sediments were extruded from the liner and sub-sampled (Figure 5).



Figure 5: Multicorer after sediment collection.



Figure 6: Slicing of the sub-bottom sediment layers.

PRELIMINARY RESULTS

Acoustic data acquisition at Snøhvit included high-resolution 3D seismic, sediment profiling and bathymetric surveying. In addition, 3D seismic work was done in the Lyngen fjord area where UiT has a test site for 4D seismic time-lapse development. Also, the single-beam echosounder ran at all times but did not record any signs of gas flares in the water column. Furthermore, we conducted 39 CTD cast, some of which included water sampling, and 5 multicorer stations in order to retrieve surface sediments. All stations are listed in the appendix and overview maps are given in Figure XXX. Below is a short summary and report on the preliminary results of the cruise.

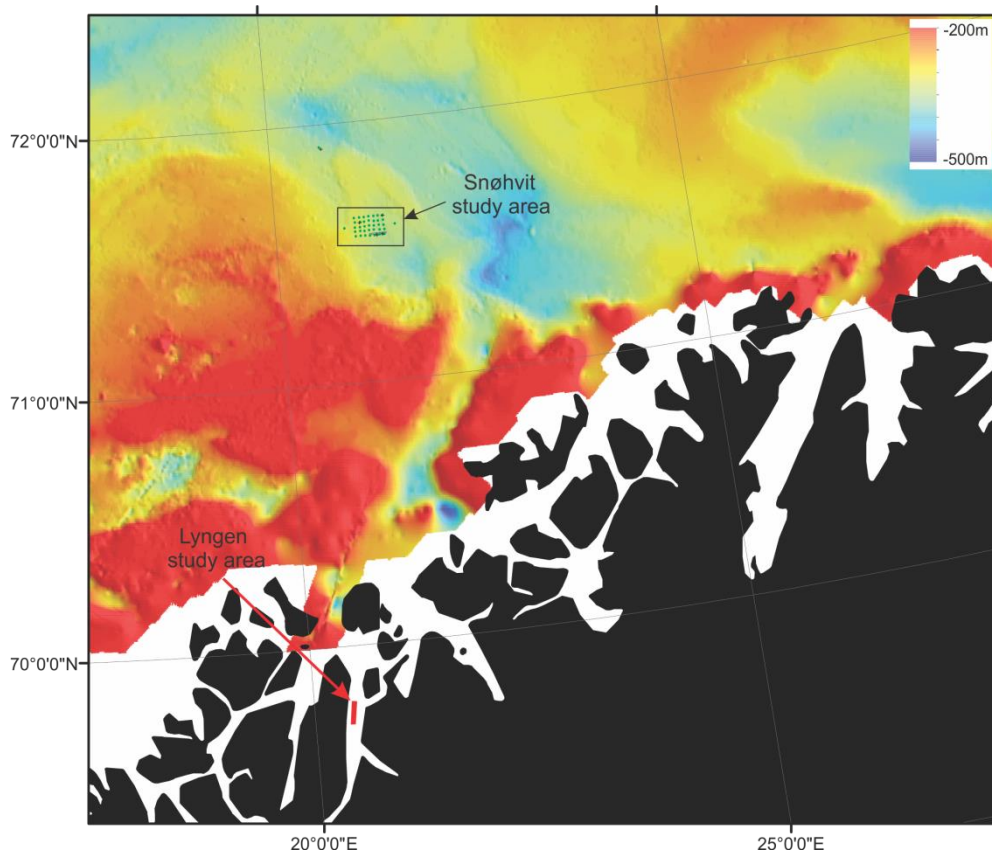


Figure 7: Map of the study areas during the ECO2 part of the Helmer Hanssen cruise from July 8-21, 2013.

Swath bathymetry onboard processing

Introduction

Swath bathymetry data were collected in the Snøhvit survey area during the acquisition of the P-Cable 3D seismic data (Figures 8). Mapping of the seafloor in the study areas were carried out with a hull-mounted, motion-compensated Kongsberg Simrad EM300 system. The mapped area cover approximately 3 x 10 km. The water depth in study areas ranges from 310 to 355 m.

Processing of bathymetric data

Line statistics showed that the raw depth data had a good quality, only the outer beams had somewhat higher noise level. IVS Fledermaus and Kongsberg-Simrad Neptune software was used for processing of bathymetric data. The processing of bathymetric data consisted of statistical data cleaning, what

was done block by block in BinStat. This function ensures an adaptive way of filtering and taking changes in the seabed terrain into account. In addition, raw data were also cleaned manually and visually with interactive graphical editors to improve the accuracy on the depth data. After processing, the bathymetry data set was gridded in the interactive visualization system Fledermaus. The good density of measurement point allowed a grid cell size of 4 m x 4 m.

Morphological features interpretation

More or less linear and sinuous features are observed almost everywhere on the seafloor in both areas (Figures 8). They are furrows with a small rise on both sides. The furrows are several km long and up to 400 m wide, but most of furrows are 1-2 km long and up to 100 m wide. They have a U-shape in a vertical profile and their shape is slightly smooth. Their depths range between 3 and 5 m. The dominant furrow orientation is ENE - WSW but the direction varies greatly. In some cases, the furrows cross-cut each other and at the end point, the furrows create a headwall. Those features were interpreted to be iceberg ploughmarks. Iceberg ploughmarks are formed when the keel of an iceberg is exceeding the water depth and erodes soft sediments. Ploughmarks indicate that the region has been influenced by glacial processes and are evidence of iceberg activity.

The seafloor in area 1 shows hundreds of small and a few large depressions (Figure 8). These depressions are typical expressions of fluid escape through the seafloor and are called pockmarks. The mapping confirms observations from 2011. Two different pockmarks classes occur in the area: hundreds of small pockmarks with diameters of up to 20 m and depth of up to 1 m, and very few large pockmarks with diameters of up to 700 m and depth of up to 10 m. Hydro-acoustic surveying did not detect any indications for gas leakage from the seafloor.

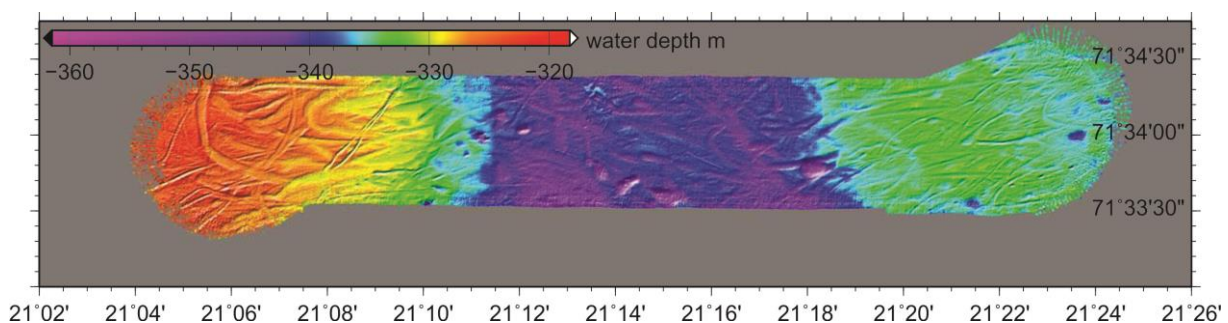


Figure 8: Bathymetric map of the study area at Snøhvit acquired simultaneously with the P-Cable 3D seismic data. A dense line spacing and slow ship's speed allows a high-resolution mapping (4m bins) of the seafloor.

CTD casts and water sampling

A synoptic collection of CTD profiles, water and sediment samples were performed in a restricted area of approximately 12x8km, which coincides with the seismic working area planned by the UiT (Figure 9). In particular, 37 CTD profiles (2 km distance from each other) were collected in the study area, 2 additional CTD profiles were acquired 5km east and west of the main area and 1 CTD station was located at about 40-50 km north of the Snøhvit area and used as a reference station. At 14 stations water samples were collected only in the bottom layer (at 2 depths: bottom and ~280m, plus two additional quotes for dissolved oxygen samples), while at 5 stations water samples were collected throughout the whole water column (6 depths were chosen, based on the vertical variability: bottom, ~280m, ~200m, ~110m, ~70m, ~30m). The selection of the 5 stations cited above was located at the following

sites: the pockmark areas (2 stations), the CO₂ injection point (1 station), 1 station far from both pockmark and injection points, and 1 station far from the Snøhvit area. Additionally, in each of these 5 stations, a multicorer sampling (Fig. 4) was also performed and two cores for each station were collected and stored in the fridge at 4°C. Supernatant water was sampled immediately for the following analyses: pH, DIC, and nutrients. Sediment cores were extruded (Fig. 3) on board after few hours and the following sliced layers were sub-sampled: 0-1cm, 3-5cm, 11-13cm, and 20-22cm. On them, the following analyses will be performed: grain size, total organic carbon, and labile organic matter. All sub-samples were stored in falcon 50mL and frozen.

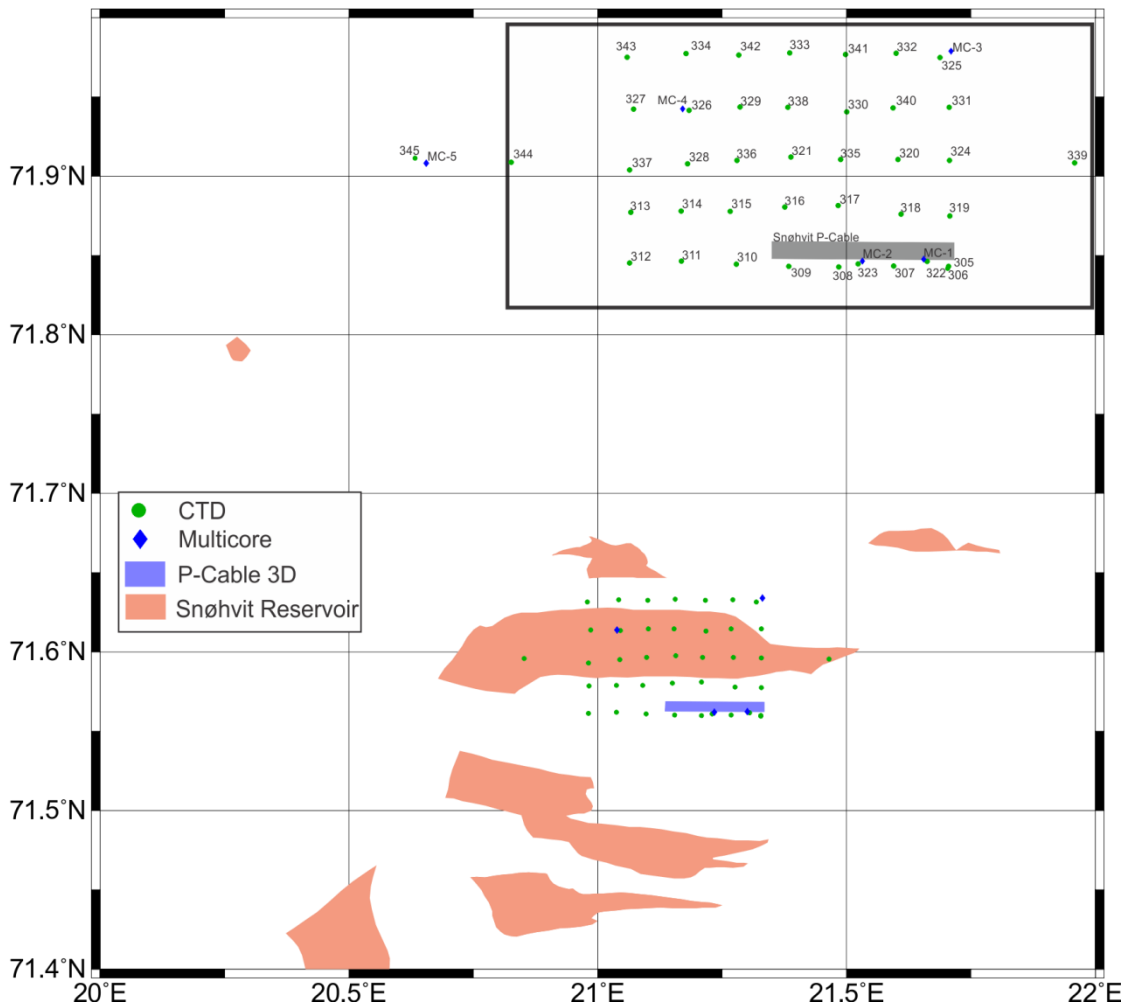


Figure 9: Detailed map of the experiments conducted at the Snøhvit hydrocarbon reservoir and CO₂ storage site.

Figure 10 shows a west-east transect in the central part of the study area of the sea-water properties at the time of the ECO₂ cruise (12 July, 2013) (see Figure 9 for location). The vertical distribution of the potential temperature (°C), salinity (p.s.u.), dissolved oxygen (ml/l), and potential density (kg/m³) revealed the presence of a thermocline and halocline (hence of a pycnocline) situated at approximately 30-50 m depth. The average depth of the oxygen maximum was located at 43 m, with values greater than 6 ml/l (obtained from the SBE43 sensor). Most of the stations revealed a decrease of the oxygen concentration in the

bottom layer (below ~300m depth). Note that preliminary analyses on the water samples, with the Winkler method, revealed that the oxygen sensor data have an offset of ~-1ml/l. At the same stations, the bottom layer was also characterized by a general decrease in temperature. Bottom distribution of the above-mentioned parameters revealed a slight gradient between the eastern and western part of the Snøhvit area. Lower values of temperature, salinity and oxygen were observed in the eastern part.

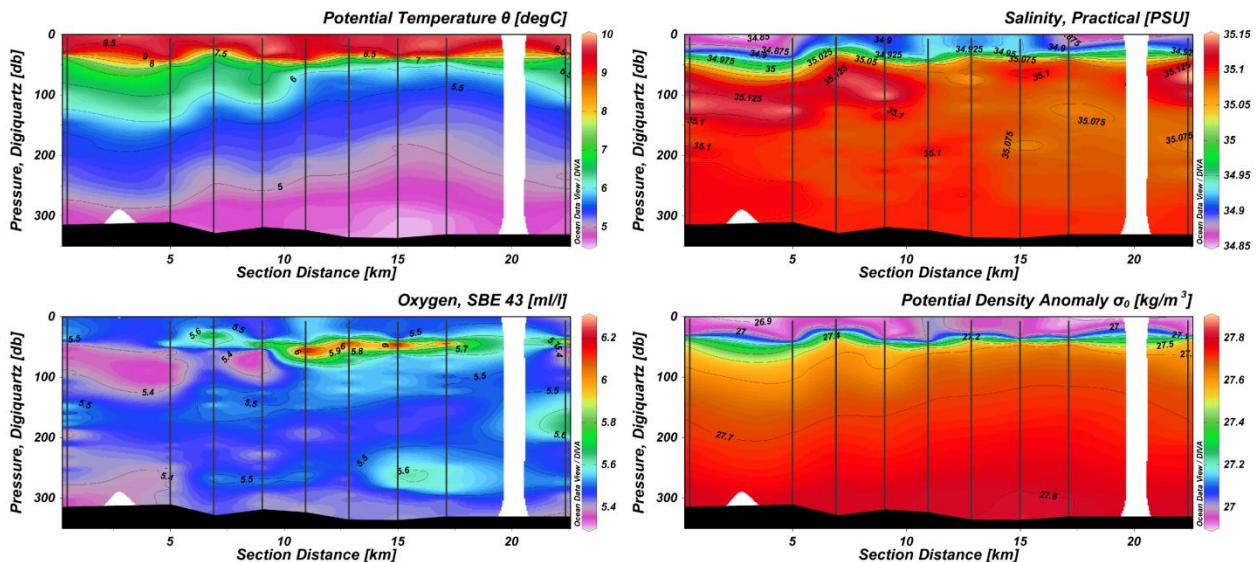


Figure 10: West-east transect in the central part of the study area of the sea-water properties at the time of the ECO2 cruise (12 July, 2013).

P-Cable 3D seismic onboard QC and processing

This report describes the onboard QC and processing of the 3D seismic data acquired with the P-Cable system on board the R/V Helmer Hanssen. A geographical map of the working area is shown in Figures 1. The main objective was to repeat the first P-Cable survey from 2011 covering the pockmark area at Snøhvit for time-lapse studies (Figure 11). During this cruise three different 3D cubes were acquired and processed.

- 1.) 12 acquisition lines of the P-Cable 2011 survey were repeated to obtain a 3D seismic volume of approximately 8 x 0.7 km.
- 2.) The innermost 4 acquisition lines were repeated once more.
- 3.) The innermost 2 acquisition lines were repeated in reverse direction

The navigation file processing and checking as well as data input, geometry assignment and further data QC and processing are reported. The QC procedures and seismic data processing were performed in the RadExPro Plus software. A migrated brute stack cube was generated and imported into Schlumberger's Visualization software Petrel to assess the quality of the seismic data.

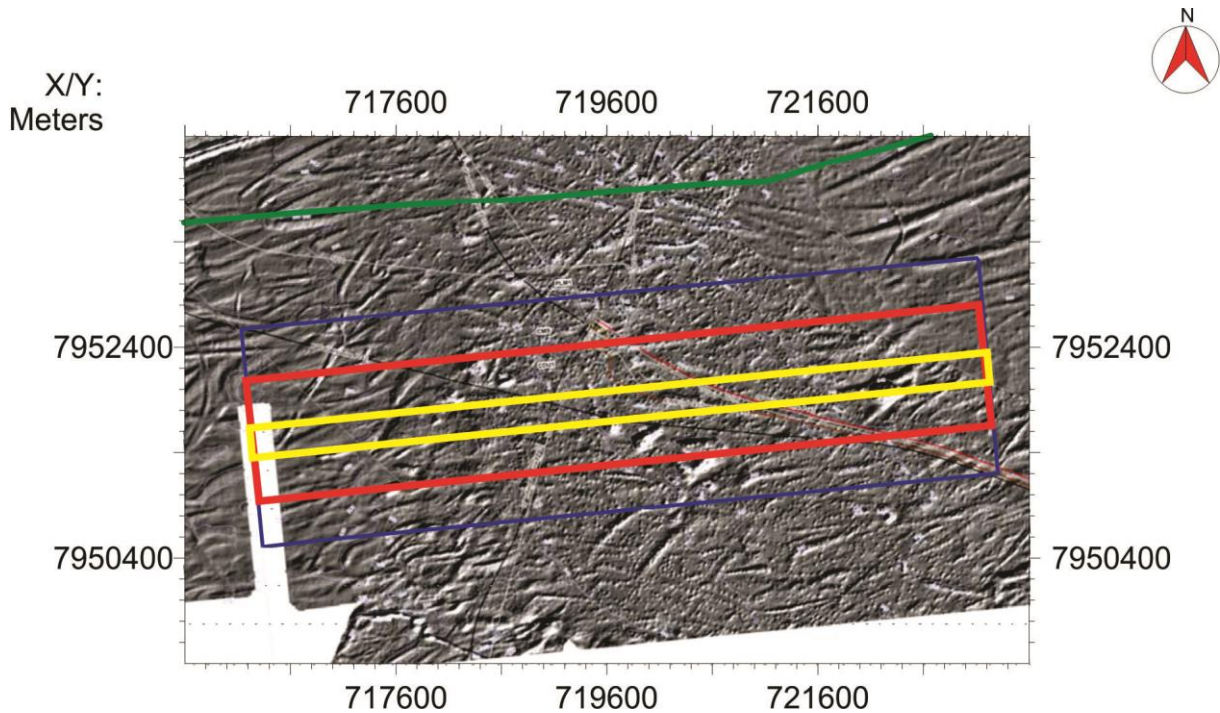


Figure 11: Seafloor map (Courtesy of Statoil) of parts of the Snøhvit area showing several hundreds of small pockmarks. The blue box indicates the location of the P-Cable 3D seismic survey acquired in 2011. The red box indicates the extent of the partial repetition of the 2011 survey. The yellow box indicates the area of a second repetition of the innermost 4 acquisition lines. In addition, the two innermost lines have been repeated in reversed direction.

Data Input

Seismic data were loaded from seg-d files and saved as RadExPro datasets within the RadExPro project database. In both areas, the lines were loaded separately directly after acquisition to be sure to correct for geometry input. Afterwards, the lines were loaded by blocks to one dataset.

Geometry Input

The geometry characteristics of the P-Cable system in this survey are described below. The P-Cable system was configured with 14 streamers that have 12.5 meters distance between streamers. Distance from Paravanes to the first and last streamers was 24.25 m and 24 m. Geometry was loaded with the P-cable geometry module from RadExPro using the parameters listed before. Navigation files were prepared with Matlab. Alpha trimmed averaging of raw navigation was involved in geometry input routine prior to geometry assignment. The geometry for every part was assigned in a similar way. There were no problems with navigation assignments and the geometry was used for all shots.

Geometry Check

After geometry input the assigned geometry was checked for consistence. Observed direct wave arrival time was compared with one calculated from the assigned geometry. To calculate this time, velocity in the water column was derived from CTD stations to be 1.477 km/s in the Snøehvit area and 1.464 km/s in the Vestnesa area. Quality control was performed by visualizing every 10 common shot point gather. Figure 12 shows an example of such a QC plot. On some shots the difference between calculated direct wave arrival time and observed one was about 3 ms, but on most shots the calculated time fitted the observed one well. Such difference can be caused by strong currents in the area and bad ship positioning.

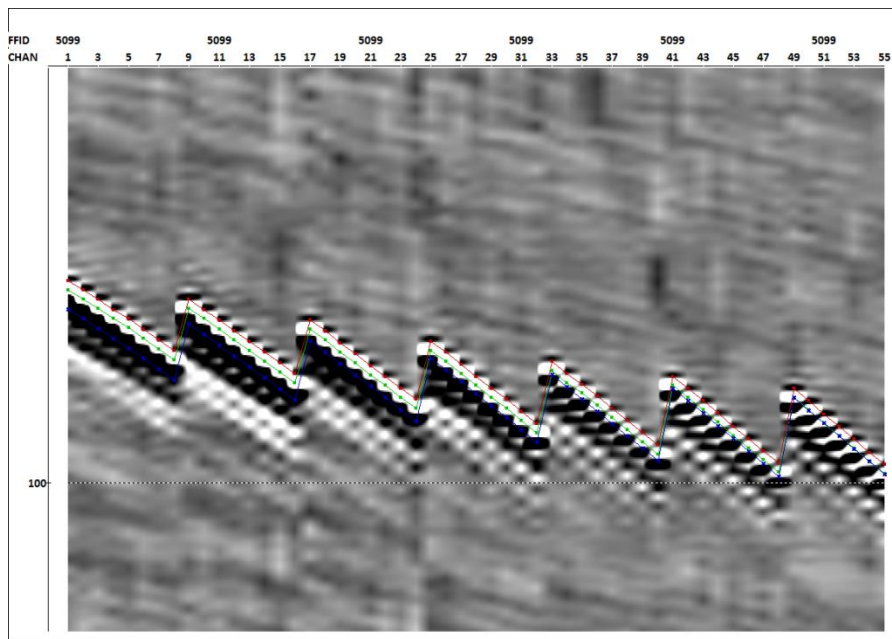


Figure 12: shot gathers for line 5 in Snøhvit survey. Blue is predicted picks of first arrivals $pick1=offset/V_{water}$; green is automatic shift to closest trough in a 15 ms window; red is bulk shift of $pick2$ by 1.5 ms to fit the zero crossing pick-trough corresponding to the first arrival times..

Binning and coverage

The CDP coverage is shown on Figures 13. As one can see there are some small gaps in final coverage of both areas, but particularly in area 2. A good coverage depends on ship navigation and line tracking. In few instances the ship was off the planned line by up to 20 m, which results in the gaps. However, these gaps mostly are only one bin size wide and thus, can be easily infilled during processing.

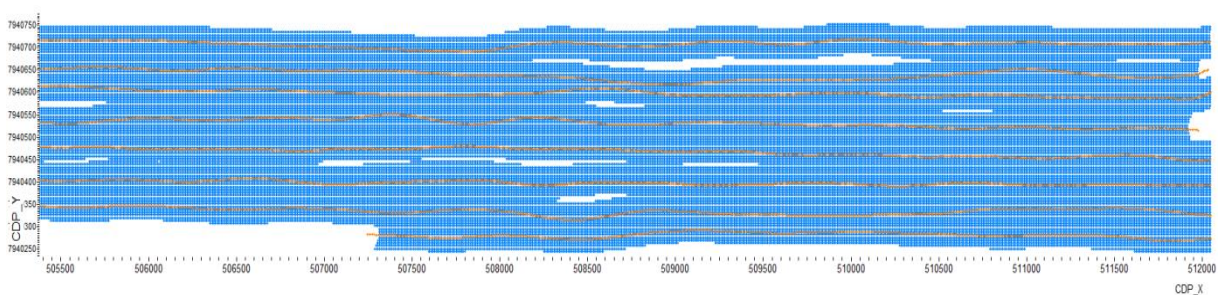


Figure 13: CDP coverage with 8 of 12 lines from the SnøHvit survey.

Partial cubes, brute stacks and QC coverage

As data acquisition continued, partial brute stacks were calculated over the available subset of seismic lines to assess gaps in the coverage and seismic data quality. Coverage control is very important during data acquisition. Coverage of the data was controlled using QC plots generated in the RadExPro. Locations of CDP points were displayed in the 3D CDP Binning tool. At the end of each area coverage plots were made for all lines, and a brute stack cube for each area was generated. The

seismic data quality is generally very good with only very few channels affected by noise and spikes (Figure 14). However, several additional processing steps need to be run in the post-processing before the final version of the data is ready. These include, tide and residual statics corrections, amplitude corrections, filtering and migration.

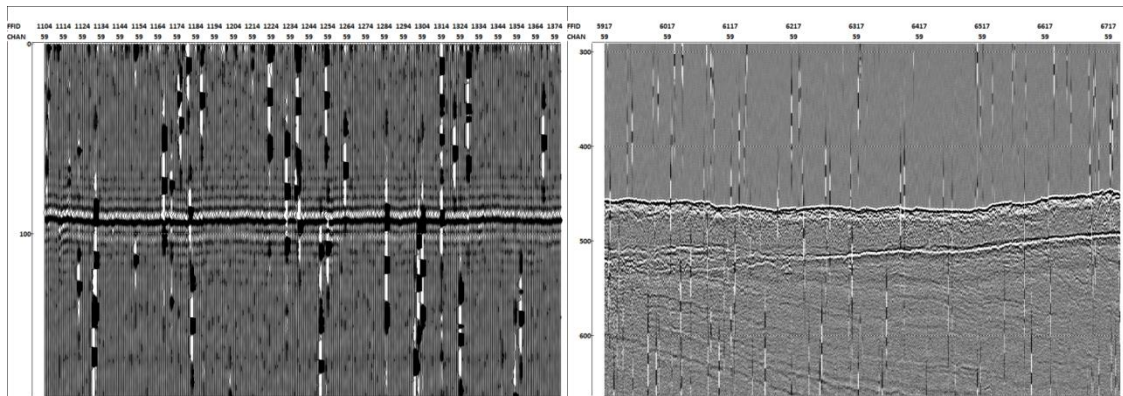


Figure 14: Examples of noise at the first arrival (left) and reflected arrivals (right) in channel 59 for several shots.

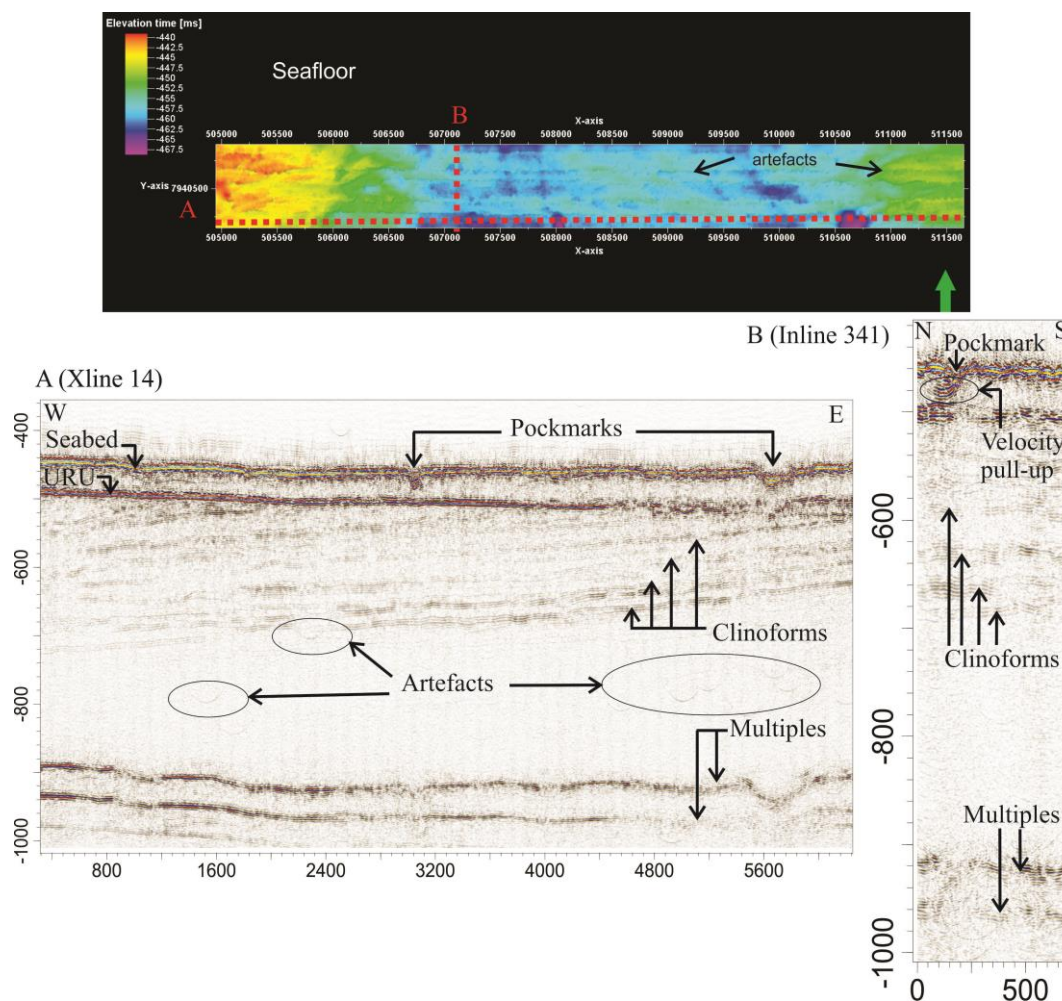


Figure 15: Data examples from the migrated brute stack of the Snøhvit survey. Seafloor time map (above); inline and crossline (below). The seafloor map shows acquisition artefacts to be addressed during processing completion.

The migrated brute stack data was imported into Schlumberger's Visualization software Petrel for data quality assessment. The seismic data is of very good quality and shows a strong reflection about 50 ms below the seafloor associated with the Upper Regional Unconformity (URU) (Figure 15). Several inclined reflection are related to the previously identified clinoform system below URU. The seafloor and the URU reflection were interpreted (Figure 15 & 16). Both surfaces show similar features compared to the 2011 baseline data. However, there are also several artefacts in statics and amplitudes that are related to the acquisition. These will be addressed during further processing subsequent to the cruise.

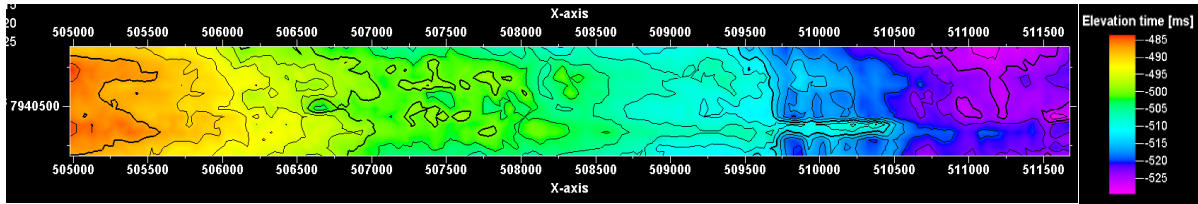


Figure 16: Map showing the Upper Regional Unconformity (URU) (Figure 15) interpreted from the brute stack data.

NARRATIVE OF THE CRUISE

Times in this report are given in local time (local time -2 hrs = UTC), 3D seismic data are logged in UTC time and ship logs are given in UTC time. Weather conditions at the start of the cruise were bad and did not allow us to leave the shelter of the fjords for two days. Afterwards, weather and sea state improved and were calm to slightly rough (Bft 3-5) with mostly grey skies. Air temperatures were between 5 °C and 12 °C. We started to prepare the cruise in Tromsø on July 8 with loading and assembling all seismic equipment.

Monday, 08.07.

The scientific crew arrived during the afternoon hours. We started to load all equipment onboard the ship and began assembling the seismic equipment. Cables were spooled onto the winches. Electronics and computers for seismic data acquisition is set up in the laboratory. Loading and assembling lasted until into the evening hours. The last participants from Moscow State University arrived late at midnight. Missed baggage on the flight forced us to delay our departure. However, gale winds and high waves (4-5 m) in the SW Barents Sea wouldn't have us allowed to leave the shelter of the coastline anyhow.

Tuesday, 09.07.

14:00 The missed baggage arrived and we depart from Tromsø heading north to the Lyngen Fjord area. Weather hasn't calmed down and we can't leave to the open sea. We will test and deploy the P-Cable system in the Fjord in the University of Tromsø 4D seismic test area. Here, we will acquire a few more lines for 4D seismic analysis to further develop the P-Cable system into a monitoring tool.

20:00: We acquire a CTD cast in 314 m water depth and hydroacoustic systems onboard are calibrated with sound velocity in water.

20:30: Start of the deployment of the P-Cable system.

22:30: Intermediate test showed no sign of problems. However, after the whole system is in the water, we discover high leakage causing communication problems.

23:00: The recovery of the end of the cross cable showed water leakage into a terminating connector causing an electrical shortcut and damaging of the last Ethernet junction of the cross cable. We replace the last cross cable section.

23:30: However, problems persist without clear indication of its cause.

Wednesday, 10.07.

01:30 Several test do not provide any further indication of the problem and we recover the whole system to systematically test individual parts.

03:00: There are indications that there are unwanted signals on the trigger line that cause A/D digitizers to reset. These problems could be related to the signal cable. However, as it is late at night and everybody has worked hard, we need to call of work for the night.

08:30: After breakfast, troubleshooting on the P-Cable system continues. Errors seem to be random and related to problems with detecting the A/D cans.

13:30 We have almost changed all parts of the system but still experience problems. When all sections have been detected it appears running fine. But then problems re-appear on the next setup.

17:00 A/D digitizers are now being programmed individually by hardcoding the IP address.

21:00 Several more test showed a unusual behaviour of the digitizers. These would be off on SPSU power up, but would come alive on a simple Ethernet ping. Once alive, the system seem to work fine and we decide to deploy.

23:00 Start of deployment

Thursday, 11.07.

01:15 Deployment of P-Cable system successfully completed. We are now running pre-survey warm-up.

02:07 Start of Line 1 in the Lyngen 4D seismic test and calibration area. We are partially repeating surveys from 2011 and 2012 to study repeatability of P-Cable high-resolution 3D seismic for the purpose of developing this system into a monitoring tool for the shallow sub-surface.

03:34 End of Line 1.

04:01 Start of Line 2.

05:42 End of Line 2.

06:23 Start of Line 3

07:38 End of Line 3. Due to oncoming fishing activities (several trawlers) this line had to be aborted shortly before the end of the line. We decide to recover the P-Cable system as further surveying will not be possible before late in the evening.

10:15 The P-Cable system is successfully recovered.

10:30 The weather conditions in the SW Barents Sea have slightly improved but wave heights are still around 2-3 m. With a forecast of calmer conditions we steam towards the Snøhvit working area.

14:00 Many scientists are uneasy due to the waves and get seasick.

22:00 We arrived in the Snøhvit area. With 2 m high waves we cannot deploy the P-Cable. Therefore, we start a CTD and water sampling program led by participants from OGS.

22:22 Start of the first CTD station No. 305.

23:01 Start of CTD station 306 including water sampling.

Friday, 12.07

00:03 Start of CTD station No. 307

00:32 Start of CTD station No. 308.

11:11 By early morning, an additional 13 CTD and water sampling stations have been completed. At this point we interrupt the CTD program and deploy the P-Cable system as weather and sea state have improved.

13:30 The P-Cable system has been successfully deployed and we start the partial repetition of the 2011 P-Cable survey over the pockmark field at Snøhvit. The acquisition also includes repeating the inner four survey lines at least twice and once more in reversed direction to study acquisition effects on repeatability.

13:45 pre-survey warm-up, check and acquisition parameter test.

14:25 Start of Line 1.

15:25 End of Line 1. Details on the acquisition can be found in the survey log in the appendix.

23:47 End of Line 7 just before midnight.

Saturday, 13.07.

00:11 Start of Line 8.

01:07 End of Line 8.

06:20 Four more lines are completed. End of Line 12.

06:41 Start of Line 13 – 16, which repeat the inner Lines 1-4. The aim of this repetition is to study acquisition effects on time-lapse surveys and their repeatability.

11:58 End of Line 16

12:16 Start of Line 17-20, which repeat the inner Lines 1-4 in reversed direction. The aim of this repetition is to study acquisition effects on time-lapse surveys and their repeatability.

12:30 Problems with the acquisition occur. The leakage indicator on the main power supply varies significantly and indicates a bad contact somewhere on the P-Cable array. That partly and intermittently leads to loss of communication and contact with the digitizers.

13:15 Rebooting of power supply and troubleshooting the failure. After decreasing the ship's speed, the problem seems to disappear.

13:45 There are no further problems on the last third of line 17. However, we need to repeat this line as most of it has been lost due to the problems.

14:00 Start of line 18.

15:09 End of Line 18.

15:45 Start of Line 19. This line repeats Line 17.

16:52 End of Line 19 and completion of the Snøhvit P-Cable survey.

17:30 The P-Cable system has been recovered and is back on deck.

17:44 Multicorer station No. 1. The multicorer successfully samples sediments in 4 of its 6 liners from within one of the larger pockmarks at Snøhvit. Retrieval is up to approximately 40 cm. Bottom water is sampled immediately from the top of the sediment. Then the cores are stored in the refrigerator and sub-sampling will be done during the upcoming days.

18:09 CTD Station No. 322 and 323

19:18 Multicorer station No. 2 is also located in another of the large pockmarks and samples sediments in 5 of its 6 liners. Retrieval is again up to 40 cm.

20:07 CTD Stations No. 324 and 325 including water sampling.

22:11 Start of Multicorer Station No. 3 located to the NE in the Snøhvit area successfully retrieves sediments.

23:00 CTD Station No. 326 is being conducted at the site of the multicorer 3.

Sunday, 14.07.

00:21 Multicorer Station No. 4 retrieves sediments close to the injection site.

01:13 CTD Station 327 is being conducted at the site of the multicorer 4.

06:04 End of CTD station No. 334. 7 additional CTD stations have been completed during the night.

14:35 CTD and water sampling have been completed in the Snøhvit area after 9 further stations. The last station No. is 344. We leave the Snøhvit area steaming towards Svalbard for the second leg of the cruise.

16:50 CTD station No. 345 including water sampling is being conducted approximately 20 nm to the NW of Snøhvit as a base reference station.

17:27 The CTD station at the reference site is followed by Multicorer Station No. 5.

17:45 We continue to steam towards Svalbard. The ECO2 part of this Helmer Hanssen cruise has finished.

ACKNOWLEDGEMENT

We thank the captain and his crew of R/V Helmer Hanssen of the University of Tromsø for their excellent support during the 3D seismic survey and the oceanographic and sediment sampling. We are grateful to the ECO2 project, a Collaborative Project funded under the European Commission's Framework Seven Programme Topic OCEAN.2010.3 Sub-seabed carbon storage and the marine environment, project number 265847 for providing financial support to carry out this cruise to the SW Barents Sea.

APPENDIX

CTD stations

Date	Time(UTC)	St. No.	Lat.	Long.	Depth
11.07.2013	20:22:57	305	7133.581860 N	02119.556544 E	327.21
11.07.2013	21:01:58	306	7133.621426 N	02119.610368 E	332.03
11.07.2013	22:03:59	307	7133.631577 N	02116.033720 E	337.42
11.07.2013	22:32:48	308	7133.611086 N	02112.459607 E	340.08
12.07.2013	00:05:23	309	7133.626235 N	02109.186139 E	327.15
12.07.2013	00:41:03	310	7133.667651 N	02105.768816 E	322.71
12.07.2013	01:41:04	311	7133.734598 N	02102.187961 E	318.92
12.07.2013	02:18:43	312	7133.694080 N	02058.818706 E	310.03
12.07.2013	03:17:29	313	7134.735360 N	02058.887822 E	314.04
12.07.2013	03:50:23	314	7134.763516 N	02102.169218 E	315.45
12.07.2013	04:37:34	315	7134.756960 N	02105.375471 E	322.58
12.07.2013	05:14:14	316	7134.844622 N	02108.939294 E	329.18
12.07.2013	06:01:43	317	7134.875524 N	02112.411215 E	339.06
12.07.2013	06:32:42	318	7134.699893 N	02116.506727 E	338.34
12.07.2013	07:58:27	319	7134.662066 N	02119.683416 E	330.61
12.07.2013	08:33:43	320	7135.823275 N	02116.308724 E	335.67
12.07.2013	09:11:38	321	7135.870216 N	02109.330357 E	327.27
13.07.2013	18:09:47	322	7133.725614 N	02118.221940 E	337.82
13.07.2013	18:45:07	323	7133.676468 N	02113.706905 E	338.68
13.07.2013	20:07:45	324	7135.799741 N	02119.679335 E	331.92
13.07.2013	21:00:24	325	7137.914415 N	02119.053535 E	332.62
13.07.2013	23:00:01	326	7136.831686 N	02102.683420 E	316.44
14.07.2013	01:13:57	327	7136.857247 N	02059.080926 E	316.5
14.07.2013	02:10:19	328	7135.732950 N	02102.584043 E	319.24
14.07.2013	02:43:23	329	7136.902534 N	02106.022091 E	322.61
14.07.2013	03:30:59	330	7136.803115 N	02112.966235 E	336.19
14.07.2013	03:53:59	331	7136.897686 N	02119.645935 E	336.26
14.07.2013	04:29:43	332	7138.004160 N	02116.191956 E	334.23
14.07.2013	05:09:45	333	7138.013123 N	02109.259874 E	329.44
14.07.2013	05:46:37	334	7137.998301 N	02102.484715 E	316.56
14.07.2013	06:39:32	335	7135.818581 N	02112.568130 E	338.9
14.07.2013	07:43:35	336	7135.804939 N	02105.804883 E	320.27
14.07.2013	08:40:23	337	7135.604564 N	02058.812564 E	315.19
14.07.2013	09:45:32	338	7136.891853 N	02109.124517 E	328.51
14.07.2013	10:59:02	339	7135.752574 N	02127.827962 E	331.18
14.07.2013	11:41:00	340	7136.884446 N	02115.999658 E	331.02
14.07.2013	12:19:39	341	7137.982958 N	02112.888079 E	328.69
14.07.2013	12:56:33	342	7137.964858 N	02105.936156 E	321.92
14.07.2013	13:44:39	343	7137.921414 N	02058.661841 E	317.39

14.07.2013	14:35:09	344	7135.765161 N	02051.082493 E	320.73
14.07.2013	16:50:37	345	7154.708503 N	02037.879327 E	367.47

Multicorer Stations

MC Station	Deployment Sites				
	Date	Time	Lat.	Long.	Depth(m)
1	13.07.2013	17:44:24	7133.770534 N	02117.990795 E	345.67
2	13.07.2013	19:18:44	7133.729217 N	02113.987678 E	339.24
3	13.07.2013	22:11:18	7138.050388 N	02119.777526 E	328.39
4	14.07.2013	00:21:58	7136.861583 N	02102.272919 E	315.09
5	14.07.2013	17:27:54	7154.507488 N	02039.237161 E	367.93

3D seismic line log (Lyngen)

Expedition: P-Cable July 2013

Survey: Lyngen 11.07.

Sheet #: 1 -

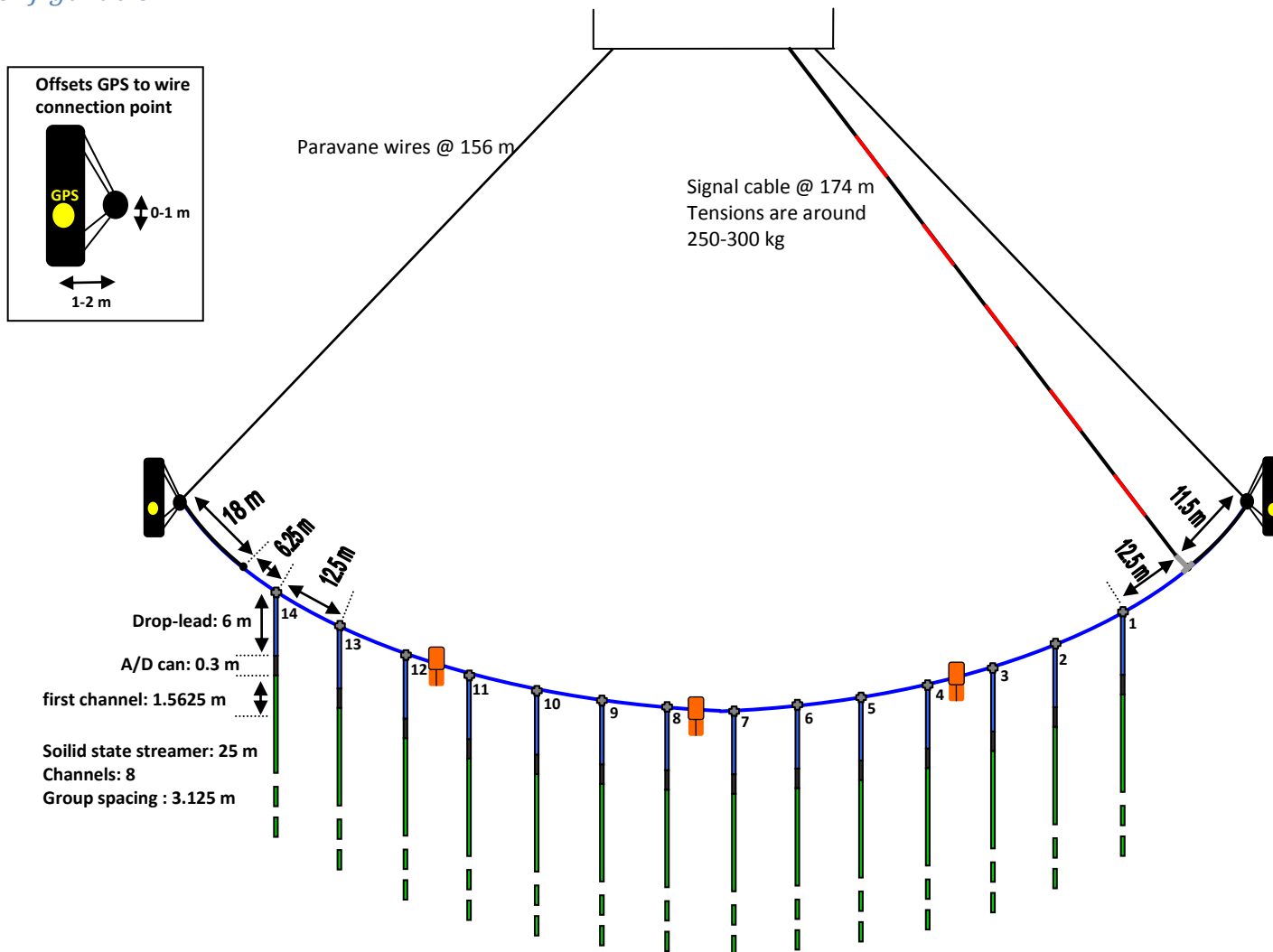
Survey configuration: see end of document

Times are UTC

3D line number:	Date: Start - end	Time (UTC): Start - end	Shot point number First - last	Shot point number when crossing planned start and end of line	Comments (sailing direction, ship speed, depth sensor, wind speed, air temperature downtime, etc.)
1	11.07.13	00:07 – 01:34	10028 -	10074 - 11318	<p>Running line one northward @ 4,2 kn, wind 1 m/s, 10 degC Shooting rate: 4 sec GPS time in header</p> <p>This is actually line 2 of the previous surveys. GGL string on some shots instead of GGA. Line 2 from 2012. Incomplete data on file 11015</p>
2	11.07.13	02:01 – 03:42	1 - 1902	306 - 1510	<p>Running line two southward @ 4,4 kn, wind 3 m/s, 10 degC Shooting rate: 4 sec GPS time in header</p> <p>This is actually line 1 of the previous surveys</p>

					(2012).
3	11.07.13	04:23 – 05:38	1 -	238 - 1352	Running line three northward @ 4,4 kn, wind 3 m/s, 10 degC Shooting rate: 4 sec GPS time in header This is the second run of line 2 of the previous surveys (2012). Aborting line due to fishing activity. Lgsp 1352

Survey configuration:



Observed spread of paravanes: 158-163 m

Observed distance between gun and paravanes: 93 – 103 m, deviations between distances to both paravanes up to 5 m

Gun system: mini-GI (15/15 in³)

Shooting pressure: ~160 bar

Shooting interval: 4 sec

Recording length: 1.5 sec

3D seismic line log (Snøhvit)

Expedition: P-Cable Juli 2013

Survey: Snøhvit 12.07.13 – 13.07.13

Sheet #: 1 -

Times are UTC

Survey configuration: see end of document

3D line number:	Date: Start - end	Time (UTC): Start - end	Shot point number First - last	Shot point number when crossing planned start and end of line	Comments (sailing direction, ship speed, depth sensor, wind speed, air temperature downtime, etc.)
0					Pre-survey warm-up: A/D digitizers IP fixed. Low noise. GPS string captured and time stamp written to header.
1	12.07.13-12.07.13	12:25-13:25	1104-2012	1221-1989	Running line one eastward @ 4,5 kn, wind 5.1 m/s, 9.9degC Shooting rate: 4 sec GPS time in header
2	12.07.13-12.07.13	13:56-14:59	2013-2955	2082-2921	Running line two westward @ 4.0kn, wind 5.74 m/s, 8.3 degC Shooting rate: 4 sec GPS time in header
3	12.07.13-	15:28- 16:23	2956- 4090	3000- 3777	Running line three eastward @ 4.5 kn, wind 3.13m/s, 8.5degC Shooting rate: 4 sec GPS time in header 15:38:15 to 15:38:22 port paravane C position missing 15:41:26 to 15:41:33 port paravane C position missing 15:44:41 to 15:41:45 port paravane C position

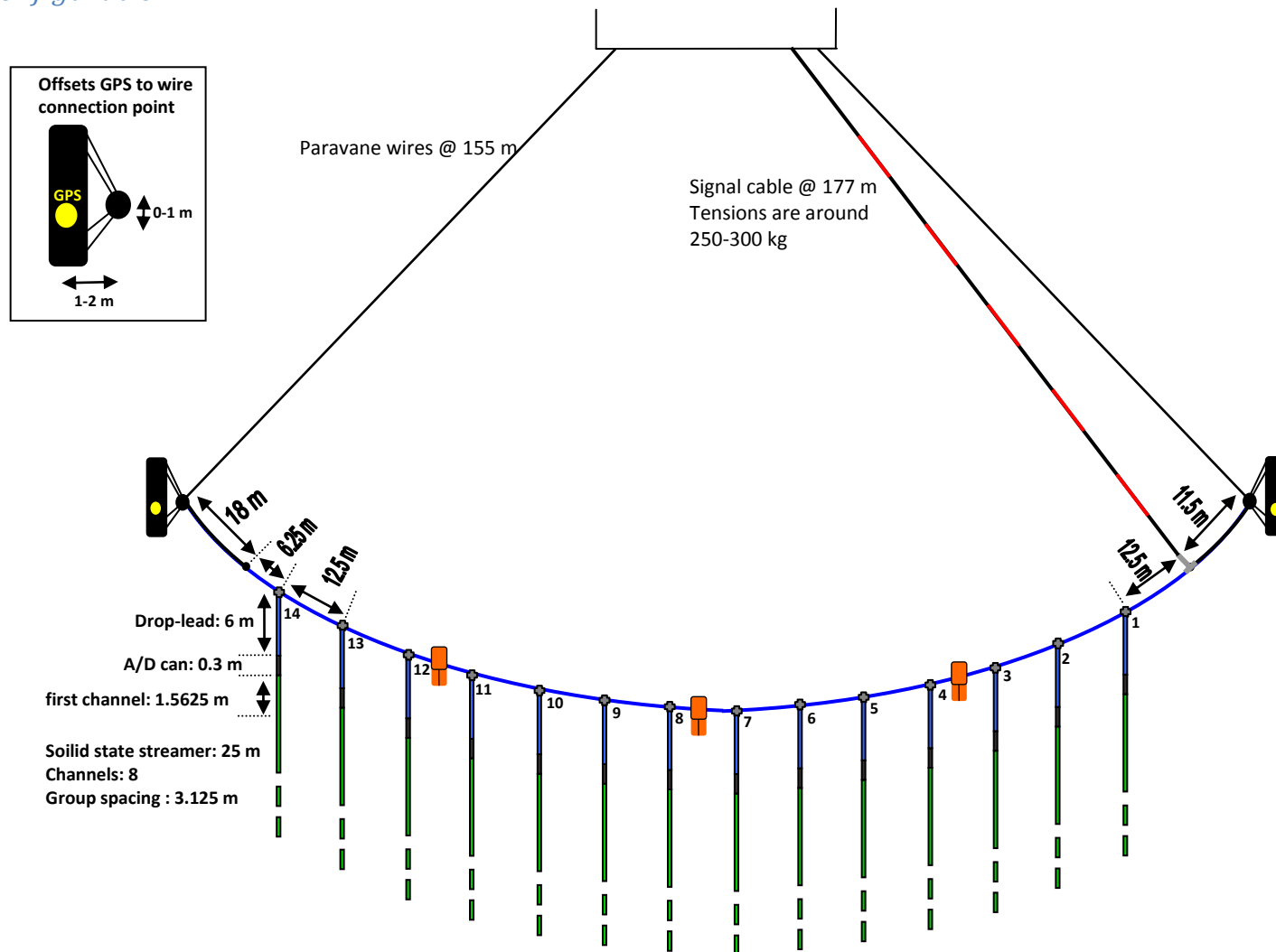
					missing 15:47:50 to 15:47:57 port paravane C position missing 15:51:03 to 15:51:09 port paravane C position missing 15:52:38 to 15:52:41 port paravane C position missing
4	12.07.13	16:55 – 17:53	4091 - 5098	4224 - 5086	Running line four westward @ 4.5 kn, wind 3.13m/s, 8.5degC Shooting rate: 4 sec GPS time in header 17:22,17:40paravane lost signal
5	12.07.13	18:16-19:10	5099-5916	5143-5885	Running line five eastward @ 4.5 kn, wind 3 m/s, 8.3 degC Shooting rate: 4 sec GPS time in header Port paravane (C) losing position for few seconds often
6	12.07.13	19:35-20:30	5917-6750	5975-6708	Running line six westward @ 4.5 kn, wind 1.75m/s, 8.1degC Shooting rate: 4 sec GPS time in header Port paravane (C) losing position for few seconds often
7	12.07.13	20:51-21:47	6751-7592	6796-7550	Running line seven eastward @ 4.5 kn, wind 3.6m/s, 8.4degC Shooting rate: 4 sec GPS time in header Port paravane (C) losing position for few seconds often

8	12.07.13-	22:11-23:07	7593-8425	7632-8375	Running line eight westward @ 4.5 kn, wind 2 m/s, 8.4 degC Shooting rate: 4 sec GPS time in header Port paravane (C) losing position for few seconds often
9	12.07.13- 13.07.13	23:27 - 00:21	8426 - 9495	8461 - 9226	Running line nine eastward @ 4.5 kn, wind 3.6 m/s, 8.4 degC Shooting rate: 4 sec GPS time in header Port paravane (C) losing position for few seconds often
10	13.07.13	00:48 – 01:43	9496 - 10695	9625 - 10452	Running line ten westward @ 4.5 kn, wind 3.6 m/s, 8.4 degC Shooting rate: 4 sec GPS time in header
11	13.07.13	02:05 – 02:57	10696 - 11753	10757 - 11539	Running line eleven eastward @ 4.5 kn, wind 4.6 m/s, 8.4 degC Shooting rate: 4 sec GPS time in header
12	13.07.13	03:20 – 04:20	11754 - 13008	11871 - 12769	Running line twelve westward @ 4.0 kn, wind 4.7 m/s, 8.9 degC Shooting rate: 4 sec GPS time in header
13	13.07.13	04:41 – 05:36	13009 -14000	13070 - 13893	Running line thirteen eastward @ 4.4 kn, wind 7.2 m/s, 8.8 degC Shooting rate: 4 sec GPS time in header This is a reshoot of line 1, same direction
14	13.07.13	06:03-06:56	14296-15092	14326-15072	Running line fourteen westward @ 4.5 kn, wind 7 m/s, 9.1 degC Shooting rate: 4 sec

					<p>GPS time in header This is a reshoot of line 2, same direction Port paravane (C) losing position for few seconds often</p>
15	13.07.13	07:18-08:46	15093-16086	15283-16054	<p>Running line fifteen eastward @ 4.4 kn, wind 7 m/s, 8.9 degC Shooting rate: 4 sec GPS time in header 15093-15155 wrong line...we started on line 5 instead of line 3. Captain is correcting. Turning to wards beginning of line 3. We decided to “arm” from SP 15156 to 15243 across the inlines. Purpose of checking crossline interpolation for 3D binning. REMARK: reshot of line 3 on the same direction starts from shot number 15245</p>
16	13.07.13	09:07-9:58	16087-16867	16117-16839	<p>Running line sixteen westward @ 4.8 kn, wind 9.4 m/s, 9.1 degC Shooting rate: 4 sec GPS time in header Getting message: “Overriden channels, see red traces” time 09:31 16526-16529 fired in 2s shot interval Reshooting line 4</p>
17	13.07.13	-11:27	16970-	16970-17341	<p>Running line seventeen eastward @ 3.0 kn, wind 12m/s, 8.8 degC Shooting rate: 4 sec GPS time in header This is a reshoot of line 2 in reverse direction Leakage problems at the start of the line. Leakage</p>

					unstable and varying. SPSU rebooted multiple times. PC rebooted. Ship speed reduced to 3 kn. Acquisition ok at about 2/3 into the line continuing to see if failure re-appears. No further problems until the end of line. Will try turning and acquire the next line.
18	13.07.13	12:00-13:09	17842-19303	17891-18886	Running line eighteen westward @ 3.5 kn, wind 9.65m/s, 9 degC Shooting rate: 4 sec GPS time in header Line 1 in reverse direction
19	13.07.13	13:45-14:52	19304-20443	19410-20414	Running line nineteen eastward @ 3.4kn, wind 11.5 m/s, 9 degC Shooting rate: 4 sec GPS time in header This is line 2 reversed shot once again

Survey configuration:



Observed spread of paravanes: 158-163 m

Observed distance between gun and paravanes: 93 – 103 m, deviations between distances to both paravanes up to 5 m

Gun system: mini-GI (15/15 in³)

Shooting pressure: ~160 bar

Shooting interval: 4 sec

Recording Length: 1.5 sec