



Martínez, Jose I. and Smith, Joshua S. and Hepburn, Hamish B. and Lam, Hon Wai (2015) Chain walking of allylrhodium species towards esters during rhodium-catalyzed nucleophilic allylations of imines. *Angewandte Chemie International Edition* . ISSN 1433-7851

Access from the University of Nottingham repository:

<http://eprints.nottingham.ac.uk/30669/1/HWL%20JoseJoshHamish%20Allylrhodium%20Migration%20ACIE%20Submission%20%28Final%20Accepted%29.pdf>

Copyright and reuse:

The Nottingham ePrints service makes this work by researchers of the University of Nottingham available open access under the following conditions.

- Copyright and all moral rights to the version of the paper presented here belong to the individual author(s) and/or other copyright owners.
- To the extent reasonable and practicable the material made available in Nottingham ePrints has been checked for eligibility before being made available.
- Copies of full items can be used for personal research or study, educational, or not-for-profit purposes without prior permission or charge provided that the authors, title and full bibliographic details are credited, a hyperlink and/or URL is given for the original metadata page and the content is not changed in any way.
- Quotations or similar reproductions must be sufficiently acknowledged.

Please see our full end user licence at:

http://eprints.nottingham.ac.uk/end_user_agreement.pdf

A note on versions:

The version presented here may differ from the published version or from the version of record. If you wish to cite this item you are advised to consult the publisher's version. Please see the repository url above for details on accessing the published version and note that access may require a subscription.

For more information, please contact eprints@nottingham.ac.uk

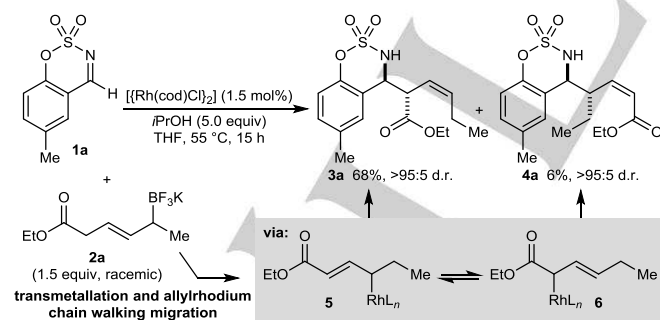
Chain Walking of Allylrhodium Species towards Esters during Rhodium-Catalyzed Nucleophilic Allylations of Imines

Jose I. Martínez, Joshua J. Smith, Hamish B. Hepburn, and Hon Wai Lam*

Abstract: Allylrhodium species derived from δ -trifluoroboryl β,γ -unsaturated esters undergo chain walking towards the ester moiety. The resulting allylrhodium species react with imines to give products containing two new stereocenters and a *Z*-alkene. By using a chiral diene ligand, products can be obtained with high enantioselectivities, where a pronounced matched/mismatched effect with the chirality of the allyltrifluoroborate is evident.

The migration of metal centers along carbon chains occurs in several important reactions.^[1,2,3,4,5,6,7] Many of these migrations take place by β -hydride elimination and hydrometallation sequences, in which the direction of travel is controlled by thermodynamics, a ligand, or a nearby functional group. With few exceptions,^[4b-f] these migrations involve simple alkylmetal species. The ability to chain walk a metal *together* with a second functional group has significant synthetic opportunities, but this mode of reactivity remains largely underdeveloped. Herein, we describe, to our knowledge, the first examples of allylrhodium chain walking, and its application in the preparation of enantioenriched products.

During our studies of enantioselective Rh-catalyzed nucleophilic allylations of imines,^[8] the reaction of imine **1a** with racemic allyltrifluoroborate **2a**^[9] in the presence of $[\{\text{Rh}(\text{cod})\text{Cl}\}_2]$ (1.5 mol%) and *i*PrOH (5.0 equiv) was conducted (Scheme 1). Surprisingly, allylation at the α - or γ -carbons relative to the boron atom of **2a** was not observed. Instead, this reaction gave homoallylic sulfamates **3a** (68% yield) and **4a** (6% yield), each in >95:5 d.r. (Scheme 1).^[10,11,12] This result suggests the reactive intermediates are allylrhodium species **5** and **6**, formed from migration of the allylrhodium species generated initially from transmetalation of **2a** with rhodium.



Scheme 1. Discovery of allylrhodium chain walking.

Table 1: Investigation of imine scope.^[a]

Entry	Product	Yield [%] ^[b]
1	3a R = Me	68 ^[c]
2	3b R = H	72
3	3c R = OMe	65 ^[d]
4	3d R = Br	65 ^[e]
5	3e	65
6	3f R = Me	65
7	3g R = Et	53
8	3h R = <i>n</i> Bu	54
9	3i R = (CH ₂) ₃ Ph	55
10	3j R = <i>i</i> Pr	<5

[a] Reactions were conducted using 0.30 mmol of **1**. The diastereomeric ratios were confirmed by ¹H NMR analysis of the unpurified reactions. [b] Yield of isolated products. [c] The regioisomer **4a** was isolated in 6% yield (Scheme 1). [d] In the unpurified reaction, traces of a product derived from allylation without chain walking were detected. [e] Isolated as an 87:13 mixture of **3d** with the regioisomeric product **4d**. See Ref. [13].

The scope of this unexpected reaction was extended to include aldimines bearing methyl, methoxy, bromo, or dioxazole groups, which gave products with high diastereoselectivities in 65–72% yield (Table 1, entries 1–5). Ketimines containing linear alkyl groups at the imine carbon were also effective (entries 6–9). However, an isopropyl-substituted imine was recovered unchanged (entry 10). With one exception (entry 3), no products of allylation at the α - or γ -carbons relative to the boron atom of **2a** were obtained. In addition, except for the reactions producing **3a** and **3d** (entries 1 and 4), the alternative regioisomers were difficult to detect by ¹H NMR spectroscopy.

Next, the potassium allyltrifluoroborate was varied (Table 2). As well as ethyl esters (Table 1) and benzyl esters (Table 2, entries 1–5, 7, and 8), a 2-naphthyl ester was accommodated (Table 2, entry 6). Regarding the substituent α to the boron atom, alkyl (entries 1, 2, 7, and 8) and chloroalkyl groups (entry 3) were tolerated. Product **3l** was isolated along with a product of allylation without chain walking, in a 95:5 ratio (entry 2).^[13] Alkyl substituents containing phenyl or benzyloxy groups resulted in lower conversions and yields (entries 4 and 5).

*] Dr. J. I. Martínez, J. J. Smith, Dr. H. B. Hepburn, Prof. H. W. Lam, School of Chemistry, University of Nottingham University Park, Nottingham, NG7 2RD (UK) E-mail: hon.lam@nottingham.ac.uk Homepage: <http://www.nottingham.ac.uk/~pczh/>

Table 2: Investigation of allyltrifluoroborate scope.^[a]

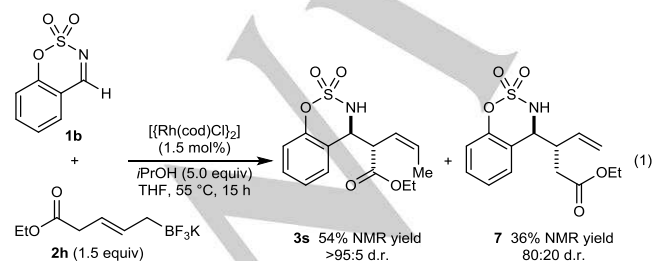
$1 + 2$ (1.5 equiv, racemic) $\xrightarrow{[(\text{Rh}(\text{cod})\text{Cl})_2] (1.5 \text{ mol}\%), \text{iPrOH} (5.0 \text{ equiv}), \text{THF}, 55^\circ\text{C}, 15 \text{ h}}$ 3k-3r (>95:5 d.r.)

2b R = Me 2e R = (CH₂)₂Ph
 2c R = nPr 2f R = CH₂OBn
 2d R = (CH₂)₄Cl

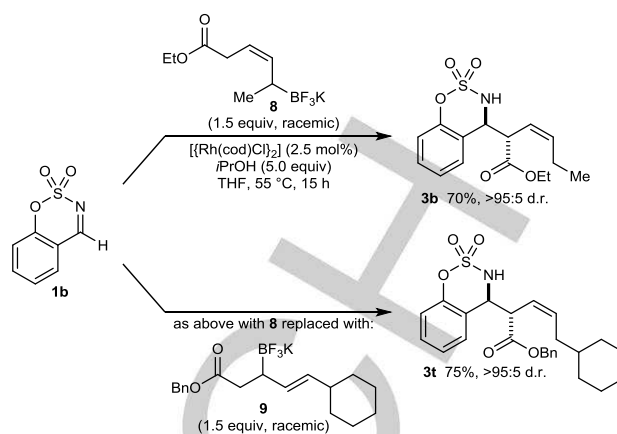
Entry	Product	Yield [%] ^[b]
1		3k R = Me 69
2		3l R = nPr 70 ^[c]
3		3m R = (CH ₂) ₄ Cl 63
4 ^[d]		3n R = (CH ₂) ₂ Ph 36 (59) ^[e]
5 ^[d]		3o R = CH ₂ OBn (53) ^[e,f]
6 ^[d]		3p 62
7		3q R = Me 67
8		3r R = nPr 58

[a] Reactions were conducted using 0.30 mmol of **1**. The diastereomeric ratios were confirmed by ¹H NMR analysis of the unpurified reactions. [b] Yield of isolated products. [c] Isolated as a 95:5 mixture of **3l** and the product of allylation without allylrhodium chain walking. See Ref. [13]. [d] Using 2.5 mol% of [(Rh(cod)Cl)₂]. [e] Yields in parentheses were determined by ¹H NMR spectroscopy using 1,3,5-trimethoxybenzene as an internal standard. [f] Attempts to purify **3o** by column chromatography were unsuccessful. A pure sample was obtained by preparative TLC.

The reaction of **1b** with allyltrifluoroborate **2h**, in which boron is bonded to a primary rather than a secondary carbon, gave not only **3s**, but also a significant quantity of product **7** in 80:20 d.r., derived from allylation without chain walking [Eq. (1)].^[14] Products **3s** and **7** could not completely separated by chromatography, and their yields were determined by ¹H NMR analysis using an internal standard.

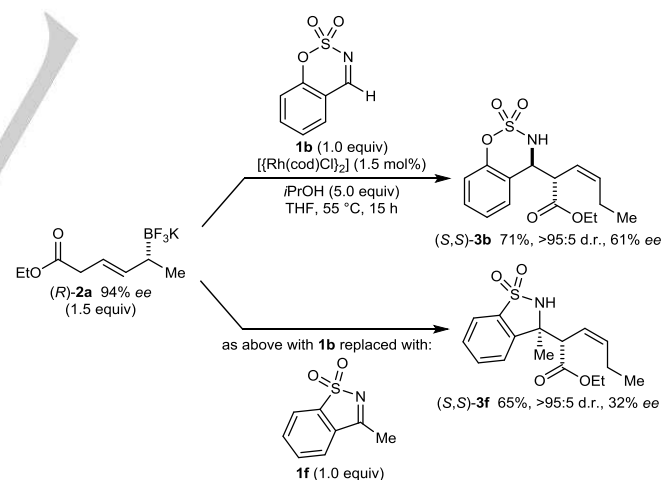


Interestingly, the reaction of *Z*-allyltrifluoroborate **8**^[9] with aldimine **1b** gave **3b** in 70% yield (Scheme 2, top), which is the same product obtained from the corresponding *E*-isomer **2a** (Table 1, entry 2). Furthermore, despite possessing a substitution pattern different to all allyltrifluoroborates employed

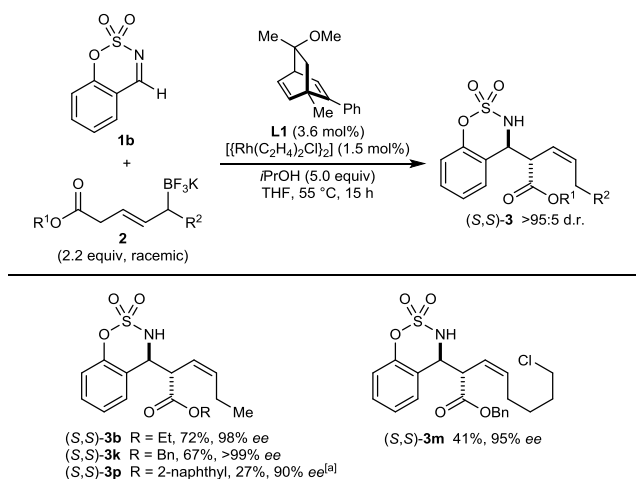
**Scheme 2.** Effect of geometrical and positional isomerism of the allyltrifluoroborate.

until this point, allyltrifluoroborate **9** reacted in the same manner to give **3t** (Scheme 2, bottom).^[10] These results suggest that regardless of the geometrical or positional isomerism of the allylrhodium intermediates. However, homoallylic boron reagents were unreactive.^[15]

Because these reactions provide chiral products from chiral substrates, we investigated whether enantioenriched allyltrifluoroborates would give enantioenriched products. However, the reactions of (*R*)-**2a** (94% ee)^[9] with aldimine **1b** and ketimine **1f** gave (*S,S*)-**3b** and (*S,S*)-**3f**, respectively, with low-to-moderate enantiomeric excesses (Scheme 3). Although chain walking of alkylmetal species can proceed with high stereospecificity,^[7c] poor absolute stereochemical transfer is observed in the reactions described herein.

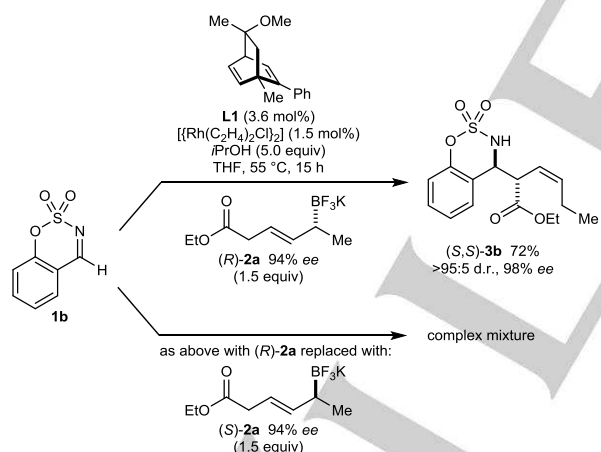
**Scheme 3.** Investigation of absolute stereochemical transfer with (*R*)-**2a**.

Next, chiral rhodium complexes were investigated for their ability to provide enantioenriched products from racemic allyltrifluoroborates (Scheme 4).^[8b] Although several chiral dienes^[16] gave poor conversions^[13] in the reaction of aldimine **1b** with **2a**, diene **L1**^[17] gave (*S,S*)-**3b** in 72% yield and 98% ee. Several other products (*S,S*)-**3k**, (*S,S*)-**3m**, and (*S,S*)-**3p** were also prepared in the same manner. However, the yields of some of these reactions were low, and the scope is more limited than when using [(Rh(cod)Cl)₂]. For example, enantioselective additions to ketimines were unsuccessful.



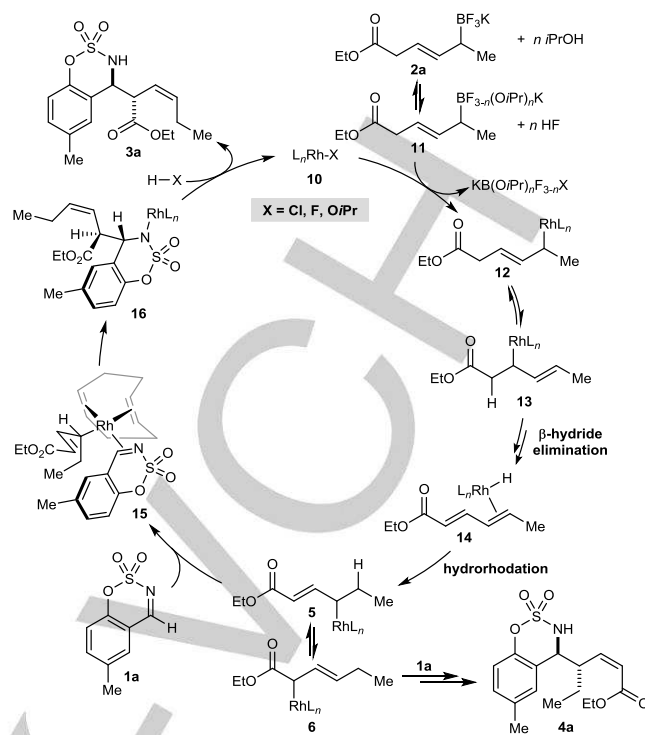
Interestingly, a pronounced matched/mismatched effect was observed with enantioenriched allyltrifluoroborates. The reaction of **1b** with (*R*)-**2a** (94% ee) using chiral diene **L1** gave (*S,S*)-**3b** with results identical to the reaction using racemic **2a** (Scheme 5, top; compare with Scheme 4). However, the corresponding reaction with (*S*)-**2a** (94% ee) gave a complex mixture; although **3b** was detected in small but unquantifiable amounts by ^1H NMR analysis, it could not be isolated. Currently, it is unclear which steps of the proposed mechanism (*vide infra*) are rendered inefficient by the stereochemical mismatch of the ligand and the allyltrifluoroborate.

Support for this mechanism was provided by the reaction of aldimine **1b**, allyltrifluoroborate **2c** (1.5 equiv), and ethyl sorbate (**17**, 1.5 equiv), using $[\{\text{Rh}(\text{C}_2\text{H}_4)_2\text{Cl}\}_2]$ as a precatalyst [Eq. (2)]. This reaction gave mostly unreacted **1b** and **17**, along with unidentified products resulting from decomposition of **2c**. However, by HPLC-MS, small quantities of the expected product **3i** derived from allyltrifluoroborate **2c** (0.4% yield), the crossover product **3a** derived from ethyl sorbate (**17**, 3.4% yield), and α,β,δ -unsaturated benzyl ester **18** (2.7% yield) were also detected.^[13]



Scheme 5. Investigation of matched/mismatched effects.

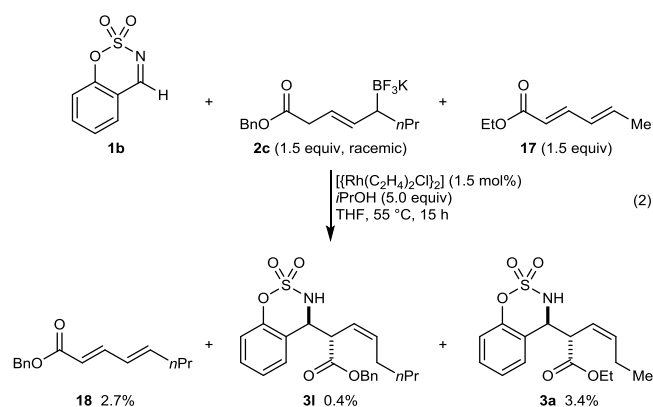
A proposed mechanism, using imine **1a** and allyltrifluoroborate **2a** as representative substrates, is shown in Scheme 6. The reaction of **2a** with *i*PrOH can reversibly generate a mixed alkoxide/fluoride boron ate complex **11**, which transmetalates with rhodium complex **10**^[18, 19] to give interconverting allylrhodium species **12** and **13**. β -Hydride elimination of **13** then gives a rhodium hydride species bound to ethyl sorbate (as in **14**).^[20,21] Hydrorhodation of the alkene distal to the ester then provides interconverting allylrhodium species **5** and **6**. A possible driving force for this chain walking migration is the formation of a more stable, more conjugated allylrhodium



Scheme 6. Proposed catalytic cycle.

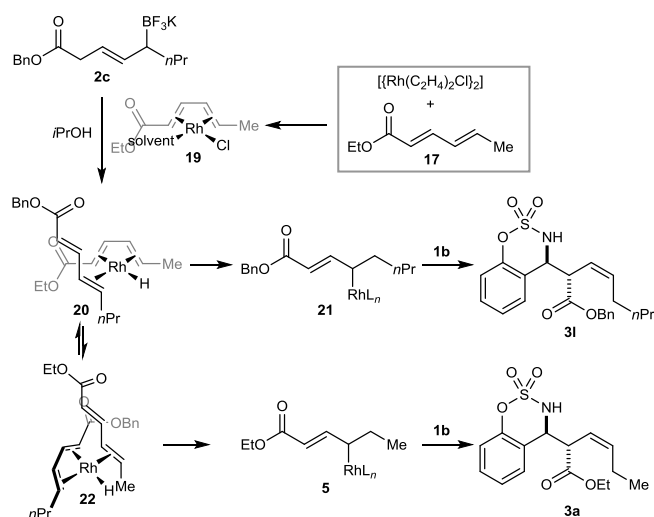
species **5**. Nucleophilic allylation of **1a** by **5** through a chairlike conformation **15**, in which the ethyl group is pseudoaxial to avoid unfavorable interactions with the cyclooctadiene ligand,^[8c, 22] gives **16**.^[23] Finally, protonolysis of **16** with HX (X = Cl, F, or *O**i*Pr) releases the product **3a** and regenerates **10**. The minor regioisomer **4a** is the result of allylation of **1a** with allylrhodium species **6**.

Presumably, the initial catalytic species in this reaction is a complex of rhodium and ethyl sorbate (**17**), possibly the *s-cis*- η^4 complex **19**, which reacts with **2c** according to the mechanism



Presumably, the initial catalytic species in this reaction is a complex of rhodium and ethyl sorbate (**17**), possibly the *s-cis*- η^4 complex **19**, which reacts with **2c** according to the mechanism

shown in Scheme 5 to give the rhodium hydride **20** (Scheme 7). Hydrorhodation of the $\alpha,\beta,\gamma,\delta$ -unsaturated benzyl ester would give allylrhodium species **21**, which reacts with **1b** to give the expected product **31**. Alternatively, a structural reorganization of **20** could give **22**, which can then undergo hydrorhodation of ethyl sorbate to give allylrhodium species **5** and the crossover product **3a**.



Scheme 7. Rationale for the formation of crossover product **3a**.

In summary, we have reported the chain walking of allylrhodium species derived from δ -trifluoroboryl β,γ -unsaturated esters during the rhodium-catalyzed nucleophilic allylation of imines, which gives products with two new stereocenters and a *Z*-alkene. Enantioselective catalysis is possible using a chiral diene ligand, where a strong matched/mismatched effect was observed. Further exploration of this new mode of reactivity is underway in our laboratories.

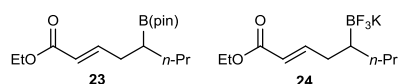
Acknowledgements

We thank the ERC (Starting Grant No. 258580), the EPSRC (Industrial CASE studentship to J. J. S. and Leadership Fellowship to H. W. L.), the Basque Country government (postdoctoral fellowship to J. I. M.), GlaxoSmithKline, and the University of Nottingham for financial support. Benjamin Pointer-Gleadhill (University of Nottingham) is gratefully acknowledged for assistance with the crossover experiment. We thank Dr. William Lewis (University of Nottingham) for X-ray crystallography, and Dr. Alan Nadin (GlaxoSmithKline) for helpful discussions.

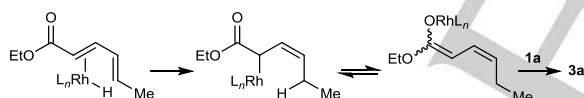
Keywords: allyltrifluoroborates · asymmetric catalysis · imines · isomerization · rhodium

- [1] For chain walking polymerization, see: a) Z. Guan, P. M. Cotts, E. F. McCord, S. J. McLain, *Science* **1999**, *283*, 2059-2062. b) S. D. Ittel, L. K. Johnson, M. Brookhart, *Chem. Rev.* **2000**, *100*, 1169-1204. c) Z. Dong, Z. Ye, *Polym. Chem.* **2012**, *3*, 286-301.
- [2] For a review of catalytic alkene isomerization–hydroformylation reactions, see: M. Vilches-Herrera, L. Domke, A. Börner, *ACS Catal.* **2014**, *4*, 1706-1724.

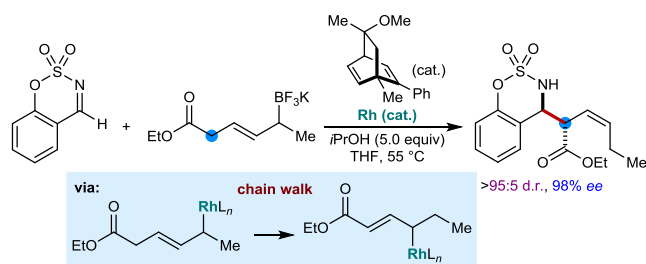
- [3] For boron chain walking, see: a) H. C. Brown, G. Zweifel, *J. Am. Chem. Soc.* **1966**, *88*, 1433-1439. a) H. C. Brown, U. S. Racherla, *J. Organomet. Chem.* **1983**, *241*, C37-C40. c) L. O. Bromm, H. Laaziri, F. Lhermitte, K. Harms, P. Knochel, *J. Am. Chem. Soc.* **2000**, *122*, 10218-10219.
- [4] For zirconium chain walking, see: a) D. W. Hart, J. Schwartz, *J. Am. Chem. Soc.* **1974**, *96*, 8115-8116. b) N. Chinkov, S. Majumdar, I. Marek, *J. Am. Chem. Soc.* **2002**, *124*, 10282-10283. c) N. Chinkov, S. Majumdar, I. Marek, *J. Am. Chem. Soc.* **2003**, *125*, 13258-13264. d) N. Chinkov, A. Levin, I. Marek, *Angew. Chem., Int. Ed.* **2006**, *45*, 465-468. e) A. Masarwa, D. Didier, T. Zabrodski, M. Schinkel, L. Ackermann, I. Marek, *Nature* **2014**, *505*, 199-203. f) A. Vasseur, L. Perrin, O. Eisenstein, I. Marek, *Chem. Sci.* **2015**, *6*, 2770-2776. g) L. Mola, M. Sidera, S. P. Fletcher, *Aust. J. Chem.* **2015**, *68*, 401-403.
- [5] For rhodium chain walking, see: a) K. Yoshida, T. Hayashi, *J. Am. Chem. Soc.* **2003**, *125*, 2872-2873. b) G. C. Tsui, M. Lautens, *Angew. Chem., Int. Ed.* **2010**, *49*, 8938-8941. c) J. Ryu, S. H. Cho, S. Chang, *Angew. Chem., Int. Ed.* **2012**, *51*, 3677-3681. d) C. M. Filloux, T. Rovis, *J. Am. Chem. Soc.* **2015**, *137*, 508-517.
- [6] For palladium chain walking in enolate arylations, see: a) A. Renaudat, L. Jean-Gérard, R. Jazzar, C. E. Kefalidis, E. Clot, O. Baudoin, *Angew. Chem., Int. Ed.* **2010**, *49*, 7261-7265. b) S. Aspin, A.-S. Goutierre, P. Larini, R. Jazzar, O. Baudoin, *Angew. Chem., Int. Ed.* **2012**, *51*, 10808-10811. c) P. Larini, C. E. Kefalidis, R. Jazzar, A. Renaudat, E. Clot, O. Baudoin, *Chem. Eur. J.* **2012**, *18*, 1932-1944. d) A. Millet, P. Larini, E. Clot, O. Baudoin, *Chem. Sci.* **2013**, *4*, 2241-2247. e) A. Millet, D. Dailier, P. Larini, O. Baudoin, *Angew. Chem., Int. Ed.* **2014**, *53*, 2678-2682.
- [7] For palladium chain walking in the arylation of alkenes remote to alcohols or carbonyl groups, see: a) E. W. Werner, T.-S. Mei, A. J. Burckle, M. S. Sigman, *Science* **2012**, *338*, 1455-1458. b) T.-S. Mei, E. W. Werner, A. J. Burckle, M. S. Sigman, *J. Am. Chem. Soc.* **2013**, *135*, 6830-6833. c) T.-S. Mei, H. H. Patel, M. S. Sigman, *Nature* **2014**, *508*, 340-344. d) L. Xu, M. J. Hilton, X. Zhang, P.-O. Norrby, Y.-D. Wu, M. S. Sigman, O. Wiest, *J. Am. Chem. Soc.* **2014**, *136*, 1960-1967. e) M. J. Hilton, L.-P. Xu, P.-O. Norrby, Y.-D. Wu, O. Wiest, M. S. Sigman, *J. Org. Chem.* **2014**, *79*, 11841-11850. f) H. H. Patel, M. S. Sigman, *J. Am. Chem. Soc.* **2015**, *137*, 3462-3465. g) C. Zhang, C. B. Santiago, L. Kou, M. S. Sigman, *J. Am. Chem. Soc.* **2015**, *137*, 7290-7293.
- [8] a) Y. Luo, H. B. Hepburn, N. Chotsaeng, H. W. Lam, *Angew. Chem., Int. Ed.* **2012**, *51*, 8309-8313. b) H. B. Hepburn, N. Chotsaeng, Y. Luo, H. W. Lam, *Synthesis* **2013**, *45*, 2649-2661. c) H. B. Hepburn, H. W. Lam, *Angew. Chem., Int. Ed.* **2014**, *53*, 11605-11610.
- [9] The potassium allyltrifluoroborates used in this study were prepared by the copper-catalyzed 1,6-boration of $\alpha,\beta,\gamma,\delta$ -unsaturated esters. See the Supporting Information and: Y. Luo, I. D. Roy, A. G. E. Madec, H. W. Lam, *Angew. Chem., Int. Ed.* **2014**, *53*, 4186-4190.
- [10] The relative and/or absolute configurations of the products were assigned by comparison to those of **3a** (racemic), **4a** (racemic), **3f** (racemic), (*S,S*)-**3t** (resolved during crystallization), and (*S,S*)-**3b**, which were determined by X-ray crystallography. CCDC 1418585–1418589 contain the supplementary crystallographic data for this paper. These data can be obtained free of charge from The Cambridge Crystallographic Data Centre via www.ccdc.cam.ac.uk/data_request/cif.
- [11] Under the same conditions, the reaction of **2a** with benzaldehyde gave a complex mixture. The reaction of **2a** with the *N*-tosyl imine derived from benzaldehyde returned mostly unchanged starting materials.
- [12] For synthetic applications of allylic/homoallylic sulfamates similar to **3a** and **4a**, see Ref. [8b] and: Y. Luo, A. J. Carnell, H. W. Lam, *Angew. Chem., Int. Ed.* **2012**, *51*, 6762-6766.
- [13] See the Supporting Information.
- [14] The relative configuration of **7** was assigned tentatively.
- [15] Attempted reactions of the following homoallylic boron reagents and imine **1b** under various reaction conditions led only to unchanged starting materials, suggesting that transmetalation to rhodium is difficult for these reagents.



- [16] For reviews of chiral dienes, see: a) C.-G. Feng, M.-H. Xu, G.-Q. Lin, *Synlett* **2011**, 1345-1356. b) R. Shintani, T. Hayashi, *Aldrichim. Acta* **2009**, *42*, 31-38. c) J. B. Johnson, T. Rovis, *Angew. Chem., Int. Ed.* **2008**, *47*, 840-871. d) C. Defieber, H. Grutzmacher, E. M. Carreira, *Angew. Chem., Int. Ed.* **2008**, *47*, 4482-4502.
- [17] C. Fischer, C. Defieber, T. Suzuki, E. M. Carreira, *J. Am. Chem. Soc.* **2004**, *126*, 1628-1629.
- [18] T. Gendrineau, J.-P. Genet, S. Darses, *Org. Lett.* **2009**, *11*, 3486-3489.
- [19] a) M. Butters, J. N. Harvey, J. Jover, A. J. J. Lennox, G. C. Lloyd-Jones, P. M. Murray, *Angew. Chem., Int. Ed.* **2010**, *49*, 5156-5160. b) A. J. J. Lennox, G. C. Lloyd-Jones, *J. Am. Chem. Soc.* **2012**, *134*, 7431-7441.
- [20] Replacing *i*PrOH with *t*BuOH gave comparable results, thus excluding the possibility that rhodium hydride species are generated by β -hydride elimination from a rhodium isopropoxide derived from *i*PrOH.
- [21] The Rh-catalyzed reductive coupling of aldehydes with 1,3-dienes (including methyl sorbate) provides precedent for the involvement of species such as **14**; see: M. Kimura, D. Nojiri, M. Fukushima, S. Oi, Y. Sonoda, Y. Inoue, *Org. Lett.* **2009**, *11*, 3794-3797.
- [22] The same reasoning was used to rationalize the stereochemical outcome of nucleophilic allylations of imines we conducted previously; see Ref. [8c]. Similarly, the formation of *Z-anti*-homoallylic alcohols from the reaction of aldehydes with α -stereogenic allylboronic esters derived from sterically hindered diols is known: a) R. W. Hoffman, U. Weidmann, *J. Organomet. Chem.* **1980**, *195*, 137-146. b) E. M. Flamme, W. R. Roush, *J. Am. Chem. Soc.* **2002**, *124*, 13644-13645. c) M. Althaus, A. Mahmood, J. R. Suárez, S. P. Thomas, V. K. Aggarwal, *J. Am. Chem. Soc.* **2010**, *132*, 4025-4028.
- [23] An alternative mechanism for the formation of **3a** involves a 1,4-hydorhodation of ethyl sorbate to give a rhodium enolate, which then reacts with the imine in a Mannich reaction (as shown below). However, we favor the mechanism shown in Scheme 6 on the basis that an interconverting mixture of allylrhodium isomers **5** and **6** explains the formation of regioisomeric products **3a** and **4a** in a simpler fashion.



COMMUNICATION



Migrate to create: Allylrhodium species derived from δ -trifluoroboryl β,γ -unsaturated esters undergo chain walking towards the ester moiety. The resulting allylrhodium species react with imines to give products containing two new stereocenters and a *Z*-alkene. By using a chiral diene ligand, products can be obtained with high enantioselectivities, where a pronounced matched/mismatched effect with the chirality of the allyltrifluoroborate is evident.

J. I. Martínez, J. J. Smith, H. B. Hepburn, H. W. Lam*

Page No. – Page No.

Chain Walking of Allylrhodium Species towards Esters during Rhodium-Catalyzed Nucleophilic Allylations of Imines